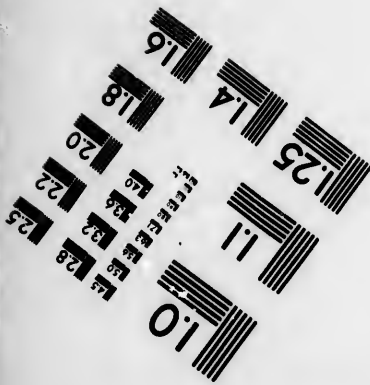
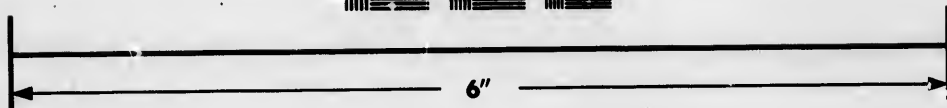
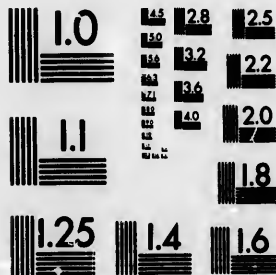


**IMAGE EVALUATION
TEST TARGET (MT-3)**



**Photographic
Sciences
Corporation**

23 WEST MAIN STREET
WEBSTER, N.Y. 14580
(716) 872-4503

1.5
1.6
1.7
1.8
1.9
2.0
2.1
2.2
2.3
2.4
2.5

**CIHM/ICMH
Microfiche
Series.**

**CIHM/ICMH
Collection de
microfiches.**



Canadian Institute for Historical Microreproductions / Institut canadien de microreproductions historiques

1.0
1.1
1.2
1.3
1.4
1.5
1.6
1.7
1.8
1.9
2.0

© 1985

Technical and Bibliographic Notes/Notes techniques et bibliographiques

The Institute has attempted to obtain the best original copy available for filming. Features of this copy which may be bibliographically unique, which may alter any of the images in the reproduction, or which may significantly change the usual method of filming, are checked below.

L'Institut a microfilmé le meilleur exemplaire qu'il lui a été possible de se procurer. Les détails de cet exemplaire qui sont peut-être uniques du point de vue bibliographique, qui peuvent modifier une image reproduite, ou qui peuvent exiger une modification dans la méthode normale de filmage sont indiqués ci-dessous.

- Coloured covers/
Couverture de couleur
- Covers damaged/
Couverture endommagée
- Covers restored and/or laminated/
Couverture restaurée et/ou pelliculée
- Cover title missing/
Le titre de couverture manque
- Coloured maps/
Cartes géographiques en couleur
- Coloured ink (i.e. other than blue or black)/
Encre de couleur (i.e. autre que bleue ou noire)
- Coloured plates and/or illustrations/
Planches et/ou illustrations en couleur
- Bound with other material/
Relié avec d'autres documents
- Tight binding may cause shadows or distortion along interior margin/
La reliure serrée peut causer de l'ombre ou de la distorsion le long de la marge intérieure
- Blank leaves added during restoration may appear within the text. Whenever possible, these have been omitted from filming/
Il se peut que certaines pages blanches ajoutées lors d'une restauration apparaissent dans le texte, mais, lorsque cela était possible, ces pages n'ont pas été filmées.
- Additional comments:/
Commentaires supplémentaires:

- Coloured pages/
Pages de couleur
- Pages damaged/
Pages endommagées
- Pages restored and/or laminated/
Pages restaurées et/ou pelliculées
- Pages discoloured, stained or foxed/
Pages décolorées, tachetées ou piquées
- Pages detached/
Pages détachées
- Showthrough/
Transparence
- Quality of print varies/
Qualité inégale de l'impression
- Includes supplementary material/
Comprend du matériel supplémentaire
- Only edition available/
Seule édition disponible
- Pages wholly or partially obscured by errata slips, tissues, etc., have been refilmed to ensure the best possible image/
Les pages totalement ou partiellement obscurcies par un feuillet d'errata, une pelure, etc., ont été filmées à nouveau de façon à obtenir la meilleure image possible.

This item is filmed at the reduction ratio checked below/
Ce document est filmé au taux de réduction indiqué ci-dessous.

10X	14X	18X	22X	26X	30X
<input type="checkbox"/>	<input type="checkbox"/>	<input type="checkbox"/>	<input type="checkbox"/>	<input checked="" type="checkbox"/>	<input type="checkbox"/>
12X	16X	20X	24X	28X	32X

The copy filmed here has been reproduced thanks to the generosity of:

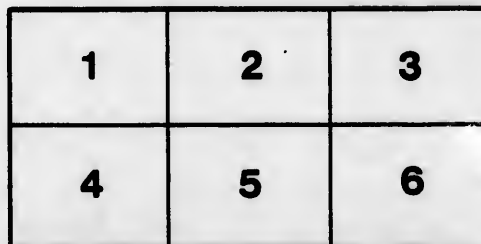
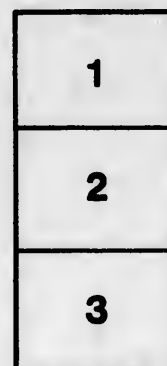
Seminary of Quebec
Library

The images appearing here are the best quality possible considering the condition and legibility of the original copy and in keeping with the filming contract specifications.

Original copies in printed paper covers are filmed beginning with the front cover and ending on the last page with a printed or illustrated impression, or the back cover when appropriate. All other original copies are filmed beginning on the first page with a printed or illustrated impression, and ending on the last page with a printed or illustrated impression.

The last recorded frame on each microfiche shall contain the symbol \rightarrow (meaning "CONTINUED"), or the symbol ∇ (meaning "END"), whichever applies.

Maps, plates, charts, etc., may be filmed at different reduction ratios. Those too large to be entirely included in one exposure are filmed beginning in the upper left hand corner, left to right and top to bottom, as many frames as required. The following diagrams illustrate the method:



L'exemplaire filmé fut reproduit grâce à la générosité de:

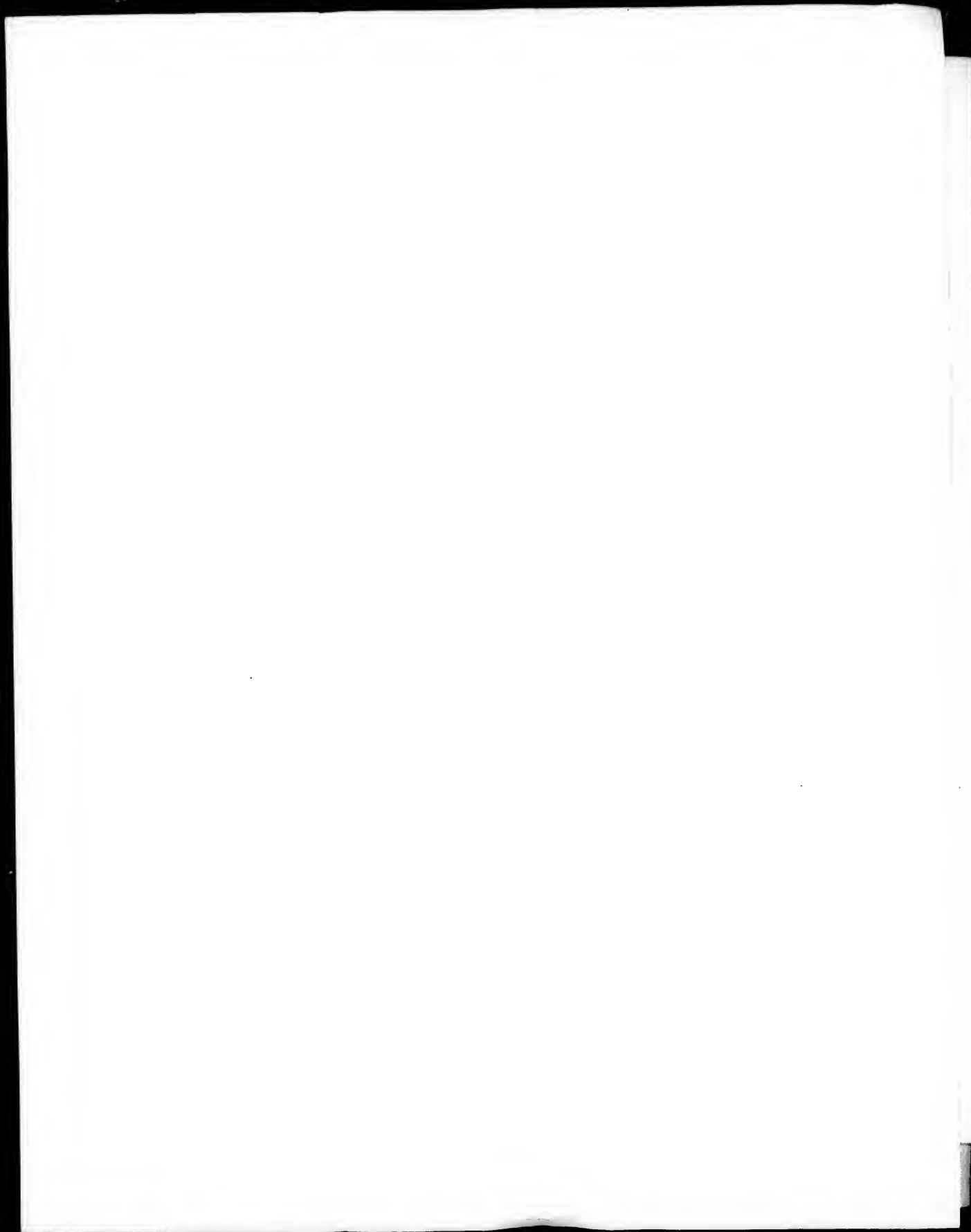
Séminaire de Québec
Bibliothèque

Les images suivantes ont été reproduites avec le plus grand soin, compte tenu de la condition et de la netteté de l'exemplaire filmé, et en conformité avec les conditions du contrat de filmage.

Les exemplaires originaux dont la couverture en papier est imprimée sont filmés en commençant par le premier plat et en terminant soit par la dernière page qui comporte une empreinte d'impression ou d'illustration, soit par le second plat, selon le cas. Tous les autres exemplaires originaux sont filmés en commençant par la première page qui comporte une empreinte d'impression ou d'illustration et en terminant par la dernière page qui comporte une telle empreinte.

Un des symboles suivants apparaîtra sur la dernière image de chaque microfiche, selon le cas: le symbole \rightarrow signifie "A SUIVRE", le symbole ∇ signifie "FIN".

Les cartes, planches, tableaux, etc., peuvent être filmés à des taux de réduction différents. Lorsque le document est trop grand pour être reproduit en un seul cliché, il est filmé à partir de l'angle supérieur gauche, de gauche à droite, et de haut en bas, en prenant le nombre d'images nécessaire. Les diagrammes suivants illustrent la méthode.



Enquiry being often made as to the Requirements of the Ordinances of 1840 and 1841, relative to the Seminary of Montreal, it has been thought not amiss to publish the following Summary.

ORDINANCE OF THE SPECIAL COUNCIL, 3 VICT., C. XXX.

Sanctioned the 9th June, 1840.

RATE OF LODS ET VENTES.

IN THE CITY AND SUBURBS OF MONTREAL.	}	On purchases of £500 and above, <i>one twentieth</i> , or, 5 ¢ cent.
		Under £500, <i>one sixteenth</i> , or, 6¼ ¢ cent.
OUT OF THE CITY, AND IN THE SEIGNORIES OF ST. SULPICE AND LAKE OF THE TWO MOUNTAINS.	}	On all purchases, <i>one sixteenth</i> , or, 6¼ ¢ cent.

TERMS OF PAYMENT.

All *Cens et Rentes* to be paid in ready money.

The *Lods et Ventes* due before the passing of the Ordinance, (9th June, 1840,) and not exceeding £41, also to be paid in ready money.

The *Lods et Ventes* due before the said 9th June, 1840, and exceeding the sum of £41, are to be paid in seven annual and equal instalments from the said 9th June, 1840.

The *Lods et Ventes* due since the 9th June, 1840, are also to be paid in ready money.

RATE OF COMMUTATION.

IN THE SEIGNORIES OF MONTREAL, ST. SULPICE, AND THE LAKE OF THE TWO MOUNTAINS,
PROPERTY MAY BE FREED OF ALL SEIGNORIAL BURDENS BY

1. Paying all arrears on said Property.
2. Paying the capital of *Cens et Rentes* at 6 $\frac{1}{2}$ cent.
3. Paying the commutation of the *Lods et Ventes*, viz :

IN THE TOWN SUBURBS AND ISLAND OF MONTREAL.	}	On all Lots of Ground having buildings thereon, and worth, with said buildings, £500 and above, <i>one twentieth</i> on the actual value of both together, or,.....5 $\frac{1}{2}$ cent.
TOWN AND SUBURBS OF MONTREAL.	}	On all Lots of Ground under the value of £500, with buildings of £100 and above, <i>one sixteenth</i> , or,6 $\frac{1}{2}$ $\frac{1}{2}$ cent.
	}	On any Lots, or on lots with buildings of less value than £100, <i>one twelfth</i> , or,8 $\frac{1}{2}$ $\frac{1}{2}$ cent.
ISLAND OF MONTREAL.	}	On all vacant Lots or on lots with buildings thereon, under £500, <i>one twelfth</i> , or,.....8 $\frac{1}{2}$ $\frac{1}{2}$ cent.
ST. SULPICE AND LAKE OF THE TWO MOUNTAINS.	}	On all Lands in these two Seignories,8 $\frac{1}{2}$ $\frac{1}{2}$ cent.

N.B.—By the provisions of the Ordinance, from and after the 9th June, 1847,
the above rates are to be raised.

REGISTRY ORDINANCE, 9TH FEB. 1841.

By this Ordinance, the Seignors are bound to enregister their claim to arrears of *Cens et Rentes, Lods et Ventes, Droits de Quint* and all other Seignorial Rights.

ALL CENSITAIRES are therefore obligated, so soon as required, to call and settle their accounts with the Seignors, or to take measures for the registration thereof, should they request delay.

MONTREAL, 1st JUNE, 1842.

TAINS,

cent.

cent.

cent.

cent.

$\frac{1}{2}$ cent.

of Cens et

ttle their

y request

