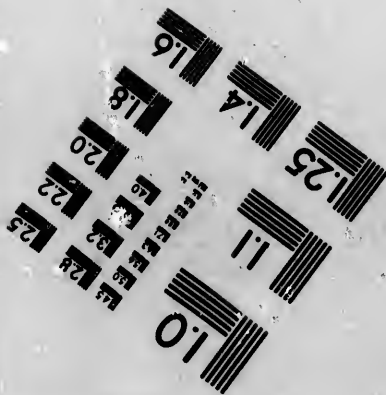
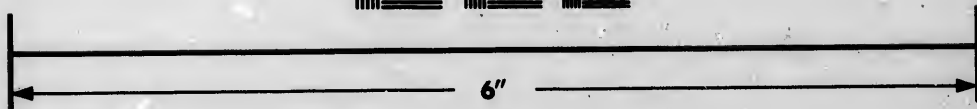
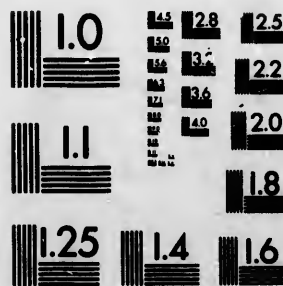


**IMAGE EVALUATION  
TEST TARGET (MT-3)**



**Photographic  
Sciences  
Corporation**

23 WEST MAIN STREET  
WEBSTER, N.Y. 14580  
(716) 872-4503

**CIHM/ICMH  
Microfiche  
Series.**

**CIHM/ICMH  
Collection de  
microfiches.**



**Canadian Institute for Historical Microreproductions / Institut canadien de microreproductions historiques**

**© 1983**

Technical and Bibliographic Notes/Notes techniques et bibliographiques

The Institute has attempted to obtain the best original copy available for filming. Features of this copy which may be bibliographically unique, which may alter any of the images in the reproduction, or which may significantly change the usual method of filming, are checked below.

L'Institut a microfilmé le meilleur exemplaire qu'il lui a été possible de se procurer. Les détails de cet exemplaire qui sont peut-être uniques du point de vue bibliographique, qui peuvent modifier une image reproduite, ou qui peuvent exiger une modification dans la méthode normale de filmage sont indiqués ci-dessous.

- |  |  |
|--|--|
| <input type="checkbox"/> Coloured covers/<br>Couverture de couleur   | <input type="checkbox"/> Coloured pages/<br>Pages de couleur   |
| <input type="checkbox"/> Covers damaged/<br>Couverture endommagée  | <input type="checkbox"/> Pages damaged/<br>Pages endommagées   |
| <input type="checkbox"/> Covers restored and/or laminated/<br>Couverture restaurée et/ou pelliculée  | <input type="checkbox"/> Pages restored and/or laminated/<br>Pages restaurées et/ou pelliculées  |
| <input checked="" type="checkbox"/> Cover title missing/<br>Le titre de couverture manque  | <input type="checkbox"/> Pages discoloured, stained or foxed/<br>Pages décolorées, tachetées ou piquées  |
| <input type="checkbox"/> Coloured maps/<br>Cartes géographiques en couleur   | <input type="checkbox"/> Pages detached/<br>Pages détachées  |
| <input type="checkbox"/> Coloured ink (i.e. other than blue or black)/<br>Encre de couleur (i.e. autre que bleue ou noire)   | <input type="checkbox"/> Showthrough/<br>Transparence  |
| <input type="checkbox"/> Coloured plates and/or illustrations/<br>Planches et/ou illustrations en couleur  | <input type="checkbox"/> Quality of print varies/<br>Qualité inégale de l'impression   |
| <input type="checkbox"/> Bound with other material/<br>Relié avec d'autres documents   | <input type="checkbox"/> Includes supplementary material/<br>Comprend du matériel supplémentaire   |
| <input type="checkbox"/> Tight binding may cause shadows or distortion<br>along interior margin/<br>La reliure serrée peut causer de l'ombre ou de la<br>distortion le long de la marge intérieure   | <input type="checkbox"/> Only edition available/<br>Seule édition disponible   |
| <input type="checkbox"/> Blank leaves added during restoration may<br>appear within the text. Whenever possible, these<br>have been omitted from filming/<br>Il se peut que certaines pages blanches ajoutées<br>lors d'une restauration apparaissent dans le texte,<br>mais, lorsque cela était possible, ces pages n'ont<br>pas été filmées. | <input type="checkbox"/> Pages wholly or partially obscured by errata<br>slips, tissues, etc., have been refilmed to<br>ensure the best possible image/<br>Les pages totalement ou partiellement<br>obscurcies par un feuillet d'errata, une pelure,<br>etc., ont été filmées à nouveau de façon à<br>obtenir la meilleure image possible. |
| <input type="checkbox"/> Additional comments:/<br>Commentaires supplémentaires:  |  |

This item is filmed at the reduction ratio checked below/  
Ce document est filmé au taux de réduction indiqué ci-dessous.

10X	14X	18X	22X	26X	30X
<input type="checkbox"/>	<input type="checkbox"/>	<input type="checkbox"/>	<input type="checkbox"/>	<input checked="" type="checkbox"/>	<input type="checkbox"/>
12X	16X	20X	24X	28X	32X

The copy filmed here has been reproduced thanks to the generosity of:

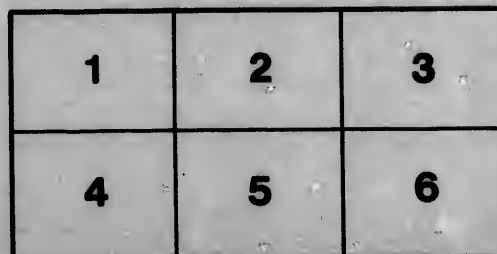
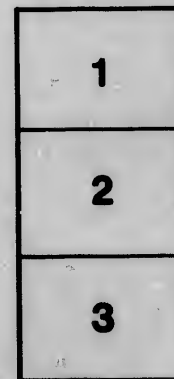
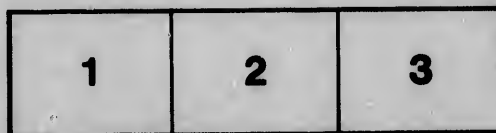
Library of Congress  
Photoduplication Service

The images appearing here are the best quality possible considering the condition and legibility of the original copy and in keeping with the filming contract specifications.

Original copies in printed paper covers are filmed beginning with the front cover and ending on the last page with a printed or illustrated impression, or the back cover when appropriate. All other original copies are filmed beginning on the first page with a printed or illustrated impression, and ending on the last page with a printed or illustrated impression.

The last recorded frame on each microfiche shall contain the symbol  $\rightarrow$  (meaning "CONTINUED"), or the symbol  $\nabla$  (meaning "END"), whichever applies.

Maps, plates, charts, etc., may be filmed at different reduction ratios. Those too large to be entirely included in one exposure are filmed beginning in the upper left hand corner, left to right and top to bottom, as many frames as required. The following diagrams illustrate the method:



L'exemplaire filmé fut reproduit grâce à la générosité de:

Library of Congress  
Photoduplication Service

Les images suivantes ont été reproduites avec le plus grand soin, compte tenu de la condition et de la netteté de l'exemplaire filmé, et en conformité avec les conditions du contrat de filmage.

Les exemplaires originaux dont la couverture en papier est imprimée sont filmés en commençant par le premier plat et en terminant soit par la dernière page qui comporte une empreinte d'impression ou d'illustration, soit par le second plat, selon le cas. Tous les autres exemplaires originaux sont filmés en commençant par la première page qui comporte une empreinte d'impression ou d'illustration et en terminant par la dernière page qui comporte une telle empreinte.

Un des symboles suivants apparaîtra sur la dernière image de chaque microfiche, selon le cas: le symbole  $\rightarrow$  signifie "A SUIVRE", le symbole  $\nabla$  signifie "FIN".

Les cartes, planches, tableaux, etc., peuvent être filmés à des taux de réduction différents. Lorsque le document est trop grand pour être reproduit en un seul cliché, il est filmé à partir de l'angle supérieur gauche, de gauche à droite, et de haut en bas, en prenant le nombre d'images nécessaire. Les diagrammes suivants illustrent la méthode.

alls  
du  
odifier  
une  
mage



rrate  
to

pelure,  
n à



32X



 **AYSIDE**  **REES**

**SERIES II. BEING A DESCRIPTION OF THE HORN-  
BEAM, CHESTNUT, WILLOWS, OAKS,  
BUTTONWOOD, ETC. \* \* \* \* \***

**BY F. SCHUYLER MATHEWS \* \* \*  
ILLUSTRATED WITH PEN AND INK  
DRAWINGS FROM NATURE BY THE  
AUTHOR \* \* \* \* \***

**TABER-PRANG ART CO  
SPRINGFIELD, MASS.**



TWO COPIES RECEIVED,  
Library of Congress,  
Office of the  
JAN 2 - 1900  
Register of Copyrights

QK482  
M52  
Vol. 2

53801

COPYRIGHT 1899 BY TABER PRANGART CO SPRINGFIELD MASS.

141  
Jan. 2. 1900.

QK482  
M52

REIVED,  
1900  
ghts

# INTRODUCTION

## WAYSIDE TREES, SERIES II.

**A**S we advance in the selection of simple leaves we reach a number of trees most of which conform to a very common type; i.e. more or less pointed-elliptical, or attenuated, and evenly toothed. This division comprises the horn-beams, chestnut, beech, willows, and poplars. Then comes a break in the rule, and the undivided-edged leaf is displaced by the ornamentally and regularly, though not deeply, divided leaf of the Thorn family. So our system progresses as follows:—

Leaves, Simple :	pages
Class 3 { Alternate growing	
{ With teeth	
{ Undivided edge . . . . .	3-13
" 4 { Alternate growing	
{ With teeth	
{ Divided edge . . . . .	15

Then come the oaks which establish an independent system of their own, thus:—

Class 5 { Alternate growing	pages
{ Without teeth	
{ Undulating edge . . . . .	17, 19
" 6 { Alternate growing	
{ Bristle pointed	
{ Divided edge . . . . .	21
" 7 { Alternate growing	
{ Without teeth	
{ Irregular, undivided edge . . . . .	23

Following the oaks are two handsome trees with remarkably ornamental, large leaves, which again conform to the system broken by the eccentric oaks. The buttonwood and the liquidambar may be classified as follows:—

Class 8 { Alternate growing	
{ With teeth	
{ Divided edge . . . . .	25

With Series II we come to the end of the trees whose leaves grow alternately on the twigs.

F. SCHUYLER MATHEWS.

1900.

Handwritten notes and a large '+' symbol.

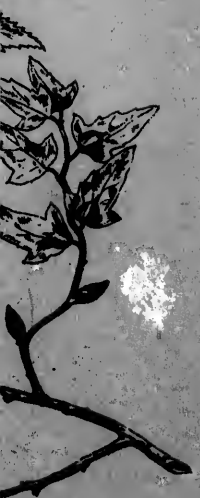
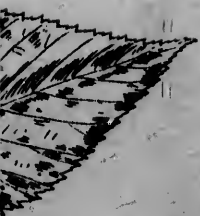


Series 2.

Hop Hornbeam.  
*Ostrya Virginica*. *Ostrya Virginiana*.



Hornbeam, Water Beech.  
*Carpinus Caroliniana*.



Water Beech.  
*Carpinus Caroliniana*.

**Hop Hornbeam.**

*Ostrya Virginica. Ostrya Virginiana.*

- Family . . . CUPULIFERÆ, Oak.
- Leaf . . . Dull, dark yellow-green, tufts of down at angles of veins beneath.
- Seed . . . Like hop cluster, about 2 ins. long.
- Bark . . . Light brown, rough, platelike scales; smooth upper branches marked like the birches.
- Height . . . 20 ft. to 30 ft., sometimes 60 ft.
- Habitat . . . Me., to the Dakotas, south to northern Fla. and eastern Texas.

**Hornbeam, Water Beech.**

*Carpinus Caroliniana.*

- Family . . . CUPULIFERÆ, Oak.
- Leaf . . . Pale olive-green, yellowish beneath, yellow ribs.
- Seed . . . Clusters, 3-lobed wing, seed at base, usually in pairs base to base.
- Bark . . . Light gray-brown, dark brown horizontal bands, not furrowed, moderately rough.
- Height . . . 25 ft. to 40 ft.
- Habitat . . . N. Y., to Tampa Bay, Fla., west to Minn., Neb., Kan., Indian Ter., and eastern Texas.

Series 2.

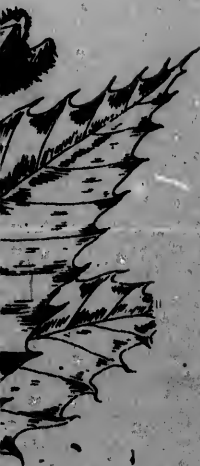
Beech.

*Fagus Americana.* *Fagus ferruginea.*



Chestnut.

*Castanea sativa.* *Castanea dentata.*



**Chestnut.**

*Castanea sativa. Castanea dentata.*

- Family . . . CUPULIFERÆ, Oak.  
Leaf . . . Dark yellow-green, yellow ribs, and pale green beneath.  
Fruit . . . Usually 2, sometimes 3 nuts in the burr.  
Bark . . . Dull, gray-brown, broad, flat ridges.  
Height . . . 60 ft. to 100 ft.  
Habitat . . . Southern Me., Valley of Winocski Riv., Vt., southern shore Lake Ontario, to southeastern Mich., south to Del., and Ind., Alleghany Mts., to Ala., and Miss., central Ky., and Tenn.

**Beech.**

*Fagus Americana. Fagus ferruginea.*

- Family . . . CUPULIFERÆ, Oak.  
Leaf . . . Silky and thin, straight ribbed, modified green, spreads out horizontally.  
Fruit . . . Small burr, not sharp prickles, nut three-cornered.  
Bark . . . Whitish gray, round-spotted, very smooth.  
Height . . . 50 ft. to 70 ft., sometimes 100 ft.  
Habitat . . . Widely distributed throughout the northern States, south to western Fla., southern Ill., and southeastern Mo., to valley of Trinity Riv., Texas.



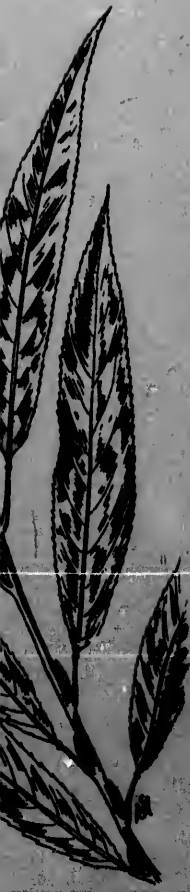
Series 2.



Heart-leaved Willow.  
*Salix cordata.*

Long-leaved Willow.  
*Salix longifolia.*

Crack Willow.  
*Salix fragilis.*



**Heart-leaved Willow.**

*Salix cordata.*

- Family . . . SALICACEÆ, Willow.  
Leaf . . . Heart-shaped at base, stipules (leafy-terminals) at base of leaf stem, bright green, both sides.  
Twig . . . Light brown, brittle.  
Bark . . . Gray-brown.  
Height . . . 10 ft. to 20 ft., often a shrub.  
Habitat . . . Common. A widely distributed and variable species.

**Long-leaved Willow.**

*Salix longifolia.*

- Family . . . SALICACEÆ, Willow.  
Leaf . . . Attenuated, green both sides, remotely toothed.  
Twig . . . Light or dark old gold, often dull purplish red.  
Bark . . . Smooth, dark brown, ruddy tinged, close scales.  
Height . . . Usually 20 ft., often a shrub. 70 ft.,  
Habitat . . . Western New England, to valley of Potomac Riv., west to Cal., south beside Mississippi Riv., to Tex., rare on Atlantic seaboard.

**Crack Willow.**

*Salix fragilis.*

- Family . . . SALICACEÆ, Willow.  
Leaf . . . Slender, light green, pale beneath, tiny wart one on each side of stem at base of leaf.  
Twig . . . Somewhat green-yellow, very brittle at base.  
Bark . . . Dark brown, rough.  
Height . . . 50 ft. to 80 ft.  
Habitat . . . Not indigenous, from Europe, extensively naturalized in northeastern States, common in Mass., N. H., and Vermont.



Series 2.



White Willow.  
*Salix alba* var. *carolina*.

Weeping Willow.  
*Salix Babylonica*.

Black Willow.  
*Salix nigra*.



Black Willow.  
*Salix nigra*.

**White Willow.**

*Salix alba* var. *caerulea*.

- Family . . . SALICACEÆ, Willow.  
 Leaf . . . Smooth, firm, dull bluish green,  
                   whitish beneath.  
 Twig . . . Olive-green.  
 Bark . . . Dark brown, rough.  
 Height . . . 50 ft. to 70 ft.  
 Habitat . . . Not indigenous, but extensively  
                   naturalized in N. H., and Mass.

**Weeping Willow.**

*Salix Babylonica*.

- Family . . . SALICACEÆ, Willow.  
 Leaf . . . Slender, light green, hanging from  
                   slender branchlets.  
 Twig . . . Very slender, yellow-green or light  
                   brown, suspended.  
 Bark . . . Rough, dark brown.  
 Height . . . 40 ft. to 60 ft.  
 Habitat . . . Not indigenous; from Syria, spread-  
                   ing along river banks, parks, gar-  
                   dens, and city streets.

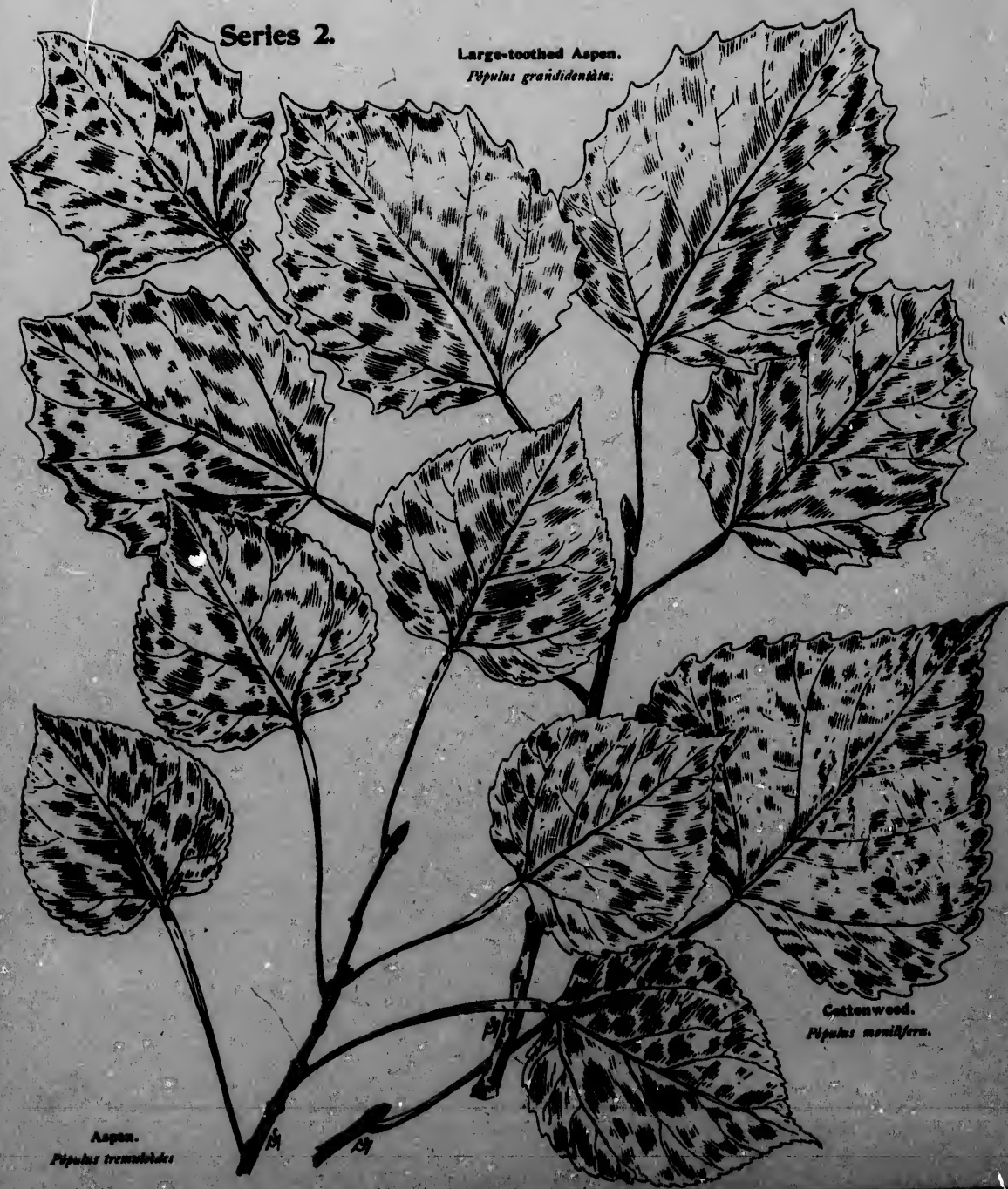
**Black Willow.**

*Salix nigra*.

- Family . . . SALICACEÆ, Willow.  
 Leaf . . . Tapering tips somewhat curved,  
                   roundish or wedge-shaped base,  
                   light green.  
 Twig . . . Slender, stipule (leaflet) at base of  
                   leaf-stem, deciduous, often absent.  
 Bark . . . Dark brown, sometimes lighter  
                   brown, rough.  
 Height . . . 30 ft. to 40. ft., occasionally 120 ft.  
 Habitat . . . Shores Lakes Huron and Superior,  
                   northern Vt. and N. Y., south to  
                   Fla., west to Dak., Neb., Kan.,  
                   Oklahoma and western Texas.

Series 2.

Large-toothed Aspen.  
*Populus grandidentata.*



Cottonwood.  
*Populus monilifera.*

Aspen.  
*Populus tremuloides.*



Cottonwood.  
*Populus monilifera.*

**Large-toothed Aspen.**

*Populus grandidentata.*

- Family . . . SALICACEÆ, Willow.  
Leaf . . . Dark, whitish green, coarsely toothed,  
flat stem.  
Bark . . . Grayish-green, fissured, base of trunk  
brownish.  
Height . . . 40 ft. to 70 ft., rarely 80 ft.  
Habitat . . . Me., to Minn., south to northern  
Del., southern Ind., and Ill.,  
Alleghany Mts., to N. Car. west-  
ward to central Ky., and Tenn.

**Aspen.**

*Populus tremuloides.*

- Family . . . SALICACEÆ, Willow.  
Leaf . . . Dark whitish green, flat stem.  
Bark . . . Whitish-green, dull, horizontal scars,  
trunk-base blackish.  
Height . . . 25 ft. to 50 ft., occasionally 100 ft.  
Habitat . . . Northern States to mts. of Penn.,  
northeastern Mo., southern Neb.,  
the mts. of the West. The most  
widely distributed tree of North  
America.

**Cottonwood.**

*Populus monilifera.*

- Family . . . SALICACEÆ, Willow.  
Leaf . . . Firm, light green, pale beneath,  
yellow midrib, flat stemmed.  
Bark . . . Ash-gray, yellowish, sometimes  
tinged green.  
Height . . . 70 ft. to 80 ft., sometimes 100 ft.  
Habitat . . . Shore Lake Champlain, Vt., western  
New England, N.Y., Pa., west of  
Alleghany Mts., Atlantic States  
south of the Potomac Riv., to  
western Fla., west to Rocky Mts.



Series 2.

Balsam Poplar, Tacamahac.

*P. balsamifera* var. *intermedia*.



*P. balsamifera*

var. *Viminalis*.

*P. balsamifera* var. *latifolia*.

Balm of Gilead.

*Populus balsamifera* var. *canadensis*.



**Balm of Gilead.**

*Populus balsamifera* var. *canadensis*.

- Family . . . SALICACEÆ, Willow.  
Leaf . . . Broad, ribs and veins downy, deep green, whitish beneath; buds odorous.  
Bark . . . Light gray-brown, small scales.  
Height . . . 40 ft. to 70 ft.  
Habitat . . . Northeastern States, rare wild, common in cultivation.

**Other common varieties of the Balsam Poplar.**

- P. balsamifera* var. *intermedia*.  
*P. balsamifera* var. *viminifera*.  
*P. balsamifera* var. *latifolia*.

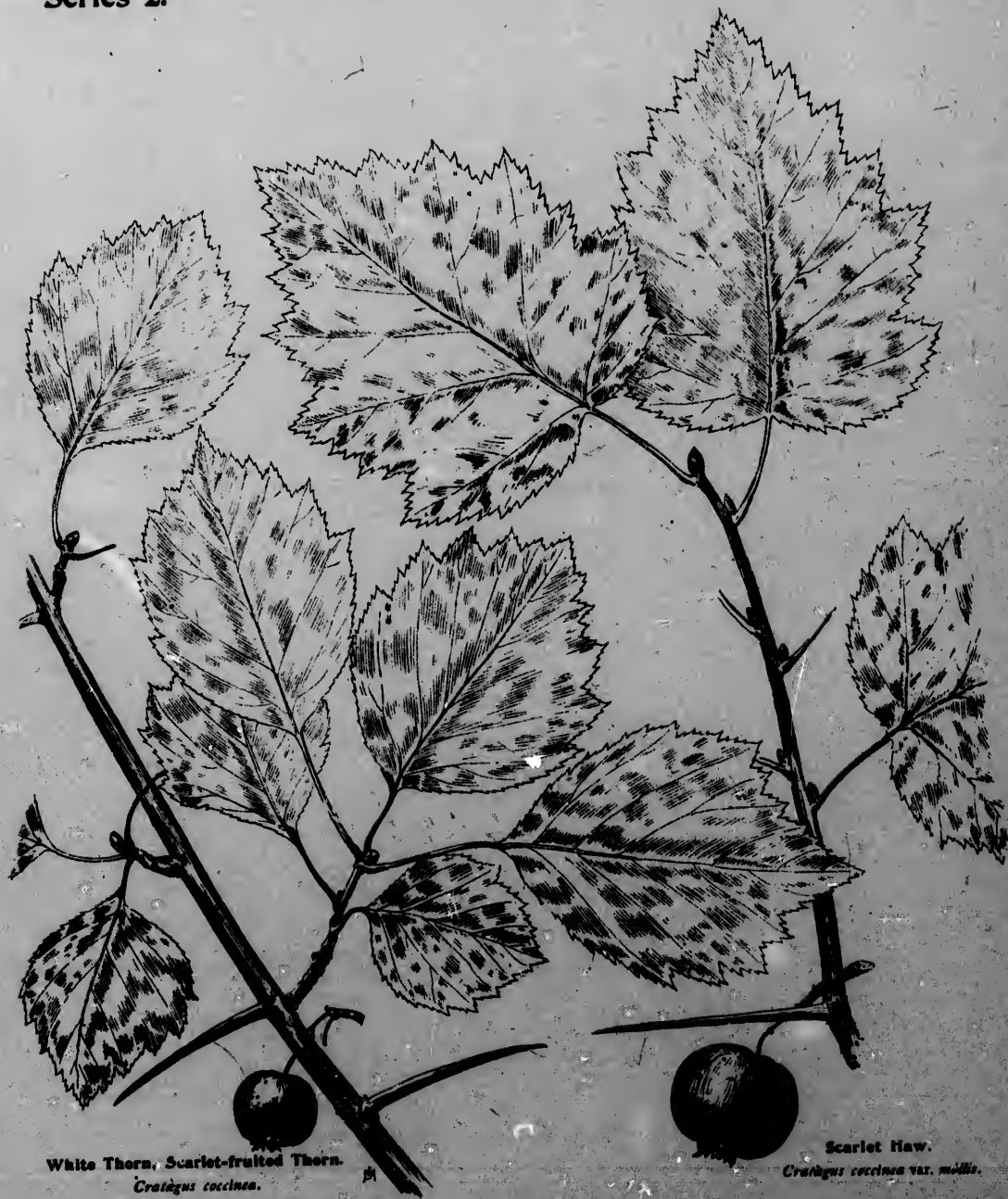
**Balsam Poplar, Tacamahac.**

*Populus balsamifera*.

- Family . . . SALICACEÆ, Willow.  
Leaf . . . Thin, deep dark-green, shiny, paler beneath.  
Bark . . . Gray tinged with red, close scales, branches tinged green.  
Height . . . 60 ft. to 70 ft., sometimes 100 ft.  
Habitat . . . Northern New England, N. Y., central Mich., and Minn., Dak., northwestern Neb., Idaho, Oregon, and Nev.



Series 2.



White Thorn, Scarlet-fruited Thorn.  
*Crotagus coccinea.*

Scarlet Haw.  
*Crotagus coccinea* var. *mollis.*



**White Thorn, Scarlet-fruited Thorn.**

*Crataegus coccinea.*

- Family . . . ROSACEÆ, Rose.  
Leaf . . . Slender stems, thin, light dull-green.  
Fruit . . . Small, dull red.  
Bark . . . Rough, gray-brown, small scales.  
Height . . . 12 ft. to 18 ft., rarely 20 ft.  
Habitat . . . Me., to northern Fla., and eastern Tex., westward to Neb. and Kan.; common in northern States.

**Scarlet Haw.**

*Crataegus coccinea* var. *mollis*.

- Family . . . ROSACEÆ, Rose.  
Leaf . . . Large, firm, more or less woolly beneath, light green.  
Fruit . . . Dull scarlet, large, 1 in. broad.  
Bark . . . Gray-brown, and ruddy brown, small scales.  
Height . . . 15 ft. to 30 ft.  
Habitat . . . Eastern Mass., through central Mich. to Mo., central Tenn., Ark., to Tex.

Scarlet haw.  
*Crataegus coccinea* var. *mollis*.

**Series 2.**

**Post Oak, Iron Oak.**

*Quercus stellata.*



**Bur Oak, Overcup Oak.**

*Quercus macrocarpa.*

**White Oak.**

*Quercus alba.*



White Oak.  
*Quercus alba.*

**Post Oak, Iron Oak**  
*Quercus stellata.*

- Family . . . CUPULIFERÆ, Oak. Class, White Oaks.  
Leaf . . . 5 to 7 round flaring lobes, rough, deep green.  
Acorn . . . Moderate size, short stem, deep cup, small scales.  
Bark . . . Dark, brownish gray, resembling White Oak.  
Height . . . 50 ft. to 60 ft., rarely 100 ft.  
Habitat . . . Cape Cod, Mass., to R. I., Long Island, and to northern Fla., southwestward to Texas.

**Bur Oak, Overcup Oak.**  
*Quercus macrocarpa.*

- Family . . . CUPULIFERÆ, Oak. Class, White Oaks.  
Leaf . . . Deeply round-lobed, large, 6 ins. to 10 ins. long, deep shiny green.  
Acorn . . . Stout, round, variable in size, fringed deep cup, nut half or more in cup.  
Bark . . . Light brown, deeply furrowed.  
Height . . . 70 ft. to 100 ft., rarely 170 ft.  
Habitat . . . Penobscot Riv. Val., Me., shore Lake Champlain, Vt., Ware Riv., Mass., Buck and Lancaster Cos., Pa., west to Montana and Oklahoma.

**White Oak.**  
*Quercus alba.*

- Family . . . CUPULIFERÆ, Oak. Class, White Oaks.  
Leaf . . . 3 to 9 round lobes, bright green.  
Acorn . . . Rough cup, usually long stem, sweet nut.  
Bark . . . Very light buff-gray, moderately rough, thin scales.  
Height . . . 70 ft. to 100 ft., sometimes 150 ft.  
Habitat . . . Me., to Minn., and south, rare in northern New England.



Series 2.



Basket Oak, Cow Oak.  
*Quercus Michauxii.*



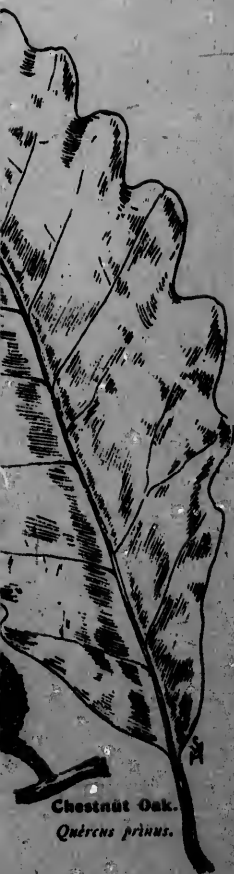
Swamp White Oak.  
*Quercus bicolor.*



Yellow Chestnut Oak.  
*Quercus acuminata.*



Chestnut Oak.  
*Quercus prinus.*



### Basket Oak, Cow Oak.

*Quercus Michauxii.*

- Family . . . CUPULIFERÆ, Oak. Class, Chestnut Oaks.
- Leaf . . . Obtuse at base, large-toothed (about 24), medium green, woolly beneath.
- Acorn . . . Rough, shallow, small-scaled cup, long nut, sweet and large.
- Bark . . . Silvery gray, flaky.
- Height . . . 60 ft. to 100 ft.
- Habitat . . . Swamps, and beside streams, Wilmington, Del., south to northern Fla., and from Ind., and Mo., south to Texas and the Gulf.

### Swamp White Oak.

*Quercus bicolor.*

- Family . . . CUPULIFERÆ, Oak. Class, Chestnut Oaks.
- Leaf . . . Wavy edge, shining, moderate green, whitish downy beneath.
- Acorn . . . Rough cup, bristly edged, usually long stem, sweet nut.
- Bark . . . Light buffish gray, moderately rough, short fissures.
- Height . . . 50 ft. to 70 ft.
- Habitat . . . Southern Me., to Iowa, Mo., and Alleghany Mts., to Ga.

### Yellow Chestnut Oak.

*Quercus acuminata.*

- Family . . . CUPULIFERÆ, Oak. Class, Chestnut Oaks.
- Leaf . . . Narrow (2 inches wide), sharply toothed, yellow-green, grayish beneath.
- Acorn . . . Rounded thin cup, covering one-third of nut, close scales.
- Bark . . . Dull silvery gray, scaly.
- Height . . . 50 ft. to 80 ft., rarely 160 ft.
- Habitat . . . Mass., to Neb., and eastern Kan., south to Texas.

### Chestnut Oak.

*Quercus prinus.*

- Family . . . CUPULIFERÆ, Oak. Class, Chestnut Oaks.
- Leaf . . . Thick, yellow-green, 10 to 15 pairs straight ribs, trifle downy beneath.
- Acorn . . . Large, cup thick with stout scales.
- Bark . . . Brownish gray, deeply furrowed.
- Height . . . 60 ft. to 70 ft., occasionally 100 ft.
- Habitat . . . Southern coast of Me., to Del. and District of Columbia, Alleghany Mts., to Ala., west shore of Lake Champlain, Valley of Genesee River, N. Y., shores of Lake Erie, south to Tenn.

Chestnut Oak.  
*Quercus prinus.*



Series 2.

Spanish Oak.  
*Quercus falcata.*  
*Quercus digitata.*

Black Oak.  
*Quercus coccinea* var. *hincobria.*  
*Quercus velutina.*

Scarlet Oak.  
*Quercus coccinea.*

Red Oak.  
*Quercus rubra.*

Pin Oak.  
*Quercus palustris.*



**Black Oak.**

*Quercus coccinea* var. *hincubria*.  
*Quercus velutina*.



**Spanish Oak.**

*Quercus falcata*. *Quercus digitata*.

- Family . . . CUPULIFERÆ, Oak. Class, Red Oaks.
- Leaf . . . Variable shape, thin, dark green, rusty downy beneath.
- Acorn . . . Two years to mature, cup thin, saucer-shaped, nut 1/2 in. long.
- Bark . . . Dark brown, with shallow seams.
- Height . . . 45 ft. to 70 ft., occasionally 100 ft.
- Habitat . . . Bucks Co., Pa., southern N. J., south to central Fla., Gulf States to Tex., Ark., southwestern Mo., to central Tenn., and Ky., and southern Ill., and Ind.

**Black Oak.**

*Quercus coccinea* var. *hincubria*. *Quercus velutina*.

- Family . . . CUPULIFERÆ, Oak. Class, Red Oaks.
- Leaf . . . Deep shiny green, smooth, sometimes downy beneath.
- Acorn . . . Rough cup, often striped, two years to mature.
- Bark . . . Very dark brown, nearly black on smaller branches.
- Height . . . 70 ft. to 80 ft., sometimes 150 ft.
- Habitat . . . Southern N. E. to Gulf States, westward to Kan. and Texas.

**Red Oak.**

*Quercus rubra*.

- Family . . . CUPULIFERÆ, Oak. Class, Red Oaks.
- Leaf . . . Pointed-lobed, bristle-tipped, deep bright green.
- Acorn . . . Two years to mature, saucer-shaped cup, large nut.
- Bark . . . Dark, gray-brown, scaly plates.
- Height . . . 70 ft. to 80 ft.
- Habitat . . . Me., to Tenn., in Alleghany Mts., to northern Ga., westward to Minn., and cen. Kan.

**Scarlet Oak.**

*Quercus coccinea*.

- Family . . . CUPULIFERÆ, Oak. Class, Red Oaks.
- Leaf . . . Deeply and broadly cut, bright green; in autumn bright red.
- Acorn . . . Two years to mature, deep cup-shaped cup, close scales.
- Bark . . . Red inside, light brown outside, small scales.
- Height . . . 60 ft. to 80 ft.
- Habitat . . . Androscoggin River, Me., southern N. H., Vt., and central N. Y.; west to Mich., Minn., and southeastern Neb., south to Dist. of Columbia, northern Ill., and Alleghany Mts. to N. C.

**Pin Oak.**

*Quercus palustris*.

- Family . . . CUPULIFERÆ, Oak. Class, Red Oaks.
- Leaf . . . Rather small, dark lustrous green, pale below with tufts of light hairs on veins.
- Acorn . . . Two years to mature, cup shallow, saucer-shaped, nut round.
- Bark . . . Gray-brown, small, close scales.
- Height . . . 60 ft. to 80 ft., sometimes 120 ft.
- Habitat . . . Connecticut River Val., near Amherst, Mass., to southern Mo., south to lower Potomac Riv. Val., Va., and to central Ky., northern Ark., and eastern Indian Ter.

Character: Branches are set with short spurs or pinlike branchlets.

Series 2.

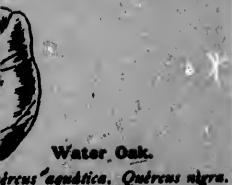
Black Jack Oak.  
*Quercus nigra*. *Quercus Marilandica*.

Water Oak.  
*Quercus aquatica*. *Quercus nigra*.



Laurel Oak.  
*Quercus imbricaria*.

Willow Oak.  
*Quercus Phellos*.



Water Oak.  
*Quercus aquatica. Quercus nigra.*



Willow Oak.  
*Quercus Phellos.*

L. W. D.

**Black Jack Oak.**

*Quercus nigra. Quercus Marilandica.*

- Family . . . CUPULIFERÆ, Oak. Class, Leather-leaved Oaks.  
 Leaf . . . Thick, firm, dark olive-green, brownish yellow beneath.  
 Acorn . . . Two years to mature, shallow cup small scales on edge, round nut.  
 Bark . . . Very dark brown.  
 Height . . . 20 ft. to 30 ft., occasionally 50 ft.  
 Habitat . . . Long Island, N. Y., northern Ohio and Ind., to southeastern Neb., central Kan., and Ind. Ter., south to Fla. and Texas.

**Laurel Oak.**

*Quercus imbricaria.*

- Family . . . CUPULIFERÆ, Oak, or Shingle Oak. Class, Leather-leaved Oaks.  
 Leaf . . . Plain edge, thick, stiff, shiny dark green, pale and downy beneath.  
 Acorn . . . Squatty-shaped, scaled, thin cup, round nut, bitter.  
 Bark . . . Light brown, ruddy scales.  
 Height . . . 30 ft. to 60 ft., rarely 100 ft.  
 Habitat . . . Lehigh Co., Pa., to Wis., Mo., and northeastern Kan., south in Alleghany Mts., to Ga. and Ala., and from Tenn. to northern Ark.

**Water Oak.**

*Quercus aquatica. Quercus nigra.*

- Family . . . CUPULIFERÆ, Oak. Class, Leather-leaved Oaks.  
 Leaf . . . Dull dark green, pale beneath, hairs at junction of veins.  
 Acorn . . . Two years to mature, shallow cup, close scales.  
 Bark . . . Brown, smooth, small scales, slender branchlets.  
 Height . . . 35 ft. to 50 ft., occasionally 80 ft.  
 Habitat . . . Southern Del., south to Tampa Bay, Fla., Gulf States, to Val. of Colorado River, Tex., Ind. Ter., Ark., Mo., and to central Tenn., and Ky.

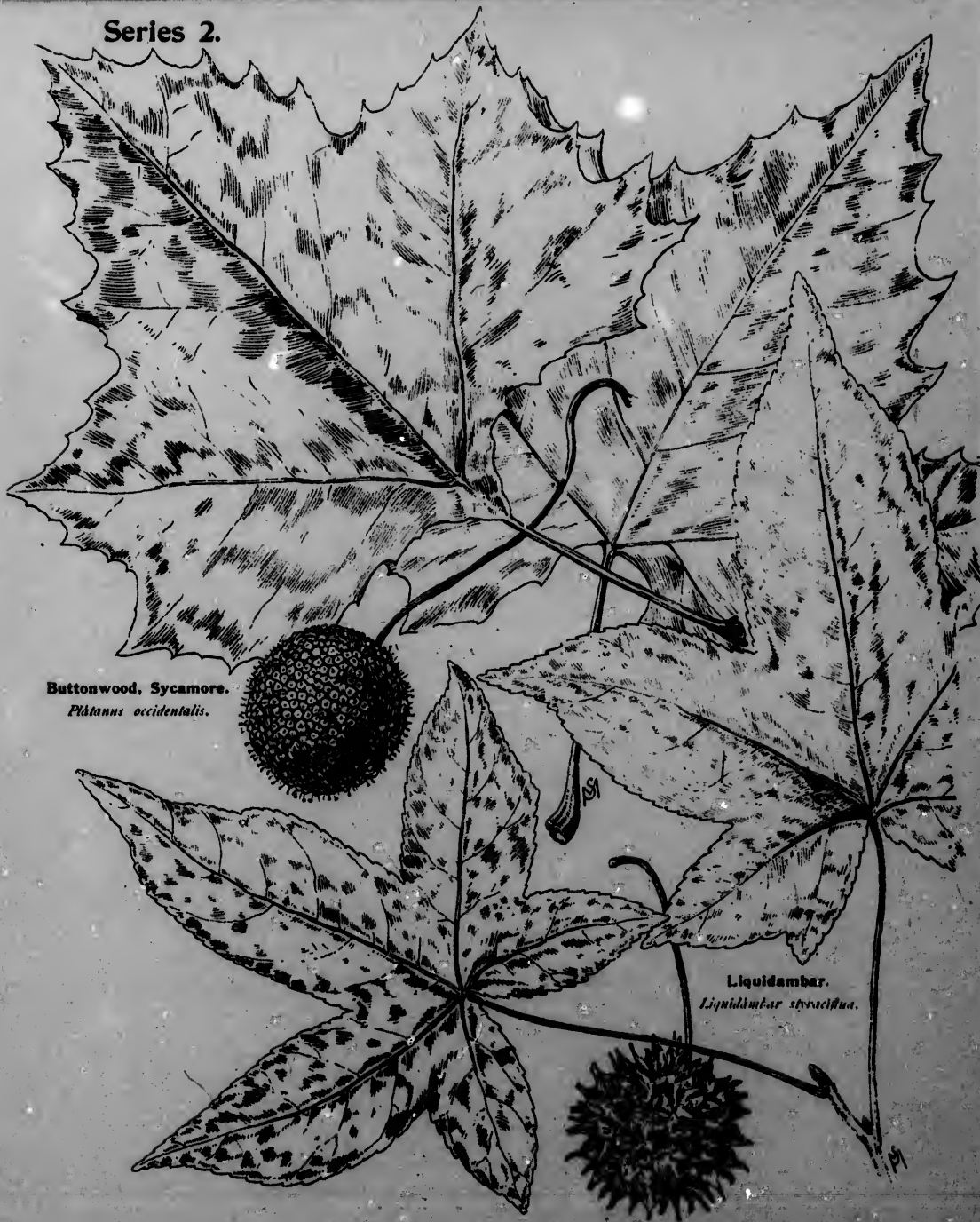
**Willow Oak.**

*Quercus Phellos.*

- Family . . . CUPULIFERÆ, Oak. Class, Leather-leaved Oaks.  
 Leaf . . . Bright moderate green, dull, pale below, tenacious color.  
 Acorn . . . Tiny, saucer-shaped cup, round nut, orange-yellow, and bitter.  
 Bark . . . Reddish brown, close scales.  
 Height . . . 30 ft. to 60 ft., sometimes 80 ft.  
 Habitat . . . Tottenville, S. I., N. Y., to northeastern Fla., Gulf States to Tex., southern Kan., to southeastern Mo.



Series 2.



Buttonwood, Sycamore.  
*Platanus occidentalis.*

Liquidambar.  
*Liquidambar styraciflua.*



Liquidambar.  
*Liquidambar styraciflua.*

**Buttonwood, Sycamore.**

*Platanus occidentalis.*

- Family . . . PLATANACEÆ, Plane-Tree.  
 Leaf . . . Shining green, smooth, firm.  
 Seed . . . Ball, suspended with wirelike stem,  
 pin-head markings.  
 Bark . . . Smooth, thin, brown, scaling, leaving  
 smooth gray trunk beneath.  
 Height . . . 80 ft. to 100 ft., occasionally 170 ft.  
 Habitat . . . Southeastern N. H., southern Me. to  
 northern Vt., westward to eastern  
 Neb. and Kan., south to northern  
 Fla., central Ala., Miss., and  
 Valley of Brazos River, Texas.

**Liquidambar.**

*Liquidambar styraciflua.*

- Family . . . HAMAMELIDEÆ, Witch-Hazel.  
 Leaf . . . One-sided star shape, 5 to 7 lobes,  
 thin, bright green, smooth.  
 Seed . . . In a spherical pod-cluster, mostly  
 abortive seed.  
 Bark . . . Gray, rough, corky ridges on the  
 branchlets.  
 Height . . . 60 ft. to 80 ft., sometimes 140 ft.  
 Habitat . . . Fairfield Co., Conn., to southeastern  
 Mo., south to Tampa Bay, Fla.,  
 through Ark. and Ind. Ter., to  
 Valley of Trinity Riv., Texas.

Character: Leaves and bruised branches exhale  
 a resinous odor.



## A REVISED LIST OF BOTANICAL NAMES OF THE TREES.

THE botanical names of trees have been revised according to certain laws now adopted by many botanists, and a most important revision, according to the Check-List made by George B. Sudworth, prepared under the direction of Prof. B. E. Fernow, for the United States Department of Agriculture, is given below, accompanied by a revision by Prof. C. S. Sargent (see *Silva* of North America), and the older

names according to Dr. Asa Gray (see *Manual*). The preference given in this book to the nomenclature of Dr. Gray, is naturally conservative, but consistent with the fact that Dr. Gray's *Manual* is its standard of authority; at the same time the reform in the use of names is sure to be established in time, and the accompanying list is essentially valuable to a popular work of this kind.

	DR. ASA GRAY.	C. S. SARGENT.	GEO. B. SUDWORTH.
Allanthus or Allantus. Alder, Black. Arbor Vitæ, or White Cedar. Ash, Black. Ash, Blue. Ash, Green.	Allanthus glandulosus. Ilex verticillata. Thuja occidentalis. Fraxinus sarcocolla. Fraxinus quadrangulata. Fraxinus viridis.	Fraxinus nigra.  Fraxinus Pennsylvanica var. lanceolata.  Fraxinus Pennsylvanica. Fraxinus Caroliniana.	Fraxinus nigra.  Fraxinus lanceolata.  Pyrus americana. Fraxinus pennsylvanica. Fraxinus caroliniana. Fraxinus americana.
Ash, Mountain. Ash, Red. Ash, Water or Swamp. Ash, White. Aspen. Aspen, Large-toothed. Balm of Gilead.	Pyrus Americana. Fraxinus pubescens. Fraxinus platycarpa. Fraxinus Americana. Populus tremuloides. Populus grandidentata. Populus balsamifera var. canadensis.	  Fraxinus Pennsylvanica.  Fagus Americana.  Fagus octandra.	  Pyrus americana. Fraxinus pennsylvanica. Fraxinus caroliniana. Fraxinus americana.  Fagus atropurpurea.  Fagus octandra. Euonymus europæus.
Basswood, Small-leaved. Beech. Buckeye, Ohio or Fetid. Buckeye, Sweet. Burning Bush. Butternut. Buttonwood or Sycamore. Birch, Black, or Sweet. Birch, European. Birch, Gray. Birch, Paper, Casco, or White. Birch, Red, or River. Birch, Yellow. Catalpa. Cedar, Red. Cedar, White. Cherry, Black. Cherry, Cnoke. Cherry, Red, or Bird Cherry. Chestnut.	Tilia pubescens. Fagus ferruginea. Aesculus glabra. Aesculus flava. Euonymus Europæus. Juglans cinerea. Platanus occidentalis. Betula lenta. Betula alba. Betula populifolia. Betula papyrifera.	  Fagus Americana.  Aesculus octandra.    Catalpa catalpa. Cupressus thyoides.  Castanea dentata. Populus deltoides.	  Fagus atropurpurea.  Aesculus octandra. Euonymus europæus.  Catalpa catalpa. Juniperus virginiana. Chamaecyparis thyoides.  Prunus virginiana. Fraxinus pennsylvanica. Castanea dentata. Populus deltoides.
Cottonwood. Cucumber Tree. Dogwood, Alternate-leaved. Dogwood, Flowering. Elm, American, or White. Elm, Corky White. Elm, Red, or Striped. Fir, Balsam. Fringe Tree. Hackberry, or Sugarberry. Haw, Black. Haw, Scarlet. Hemlock. Hickory, Brown, or Pignut. Hickory, or Slough. Hickory, Swamp, or Bitternut. Hickory, White-heart, or Mockernut. Holly, American. Herbaceous, or Water Beech, or Blue Beech. Herbaceous, Hop, or Ironwood. Horse Chestnut. Ilex, Mountain. Kentucky Coffee Tree.	Populus monilifera. Magnolia acuminata. Cornus alternifolia. Cornus florida. Ulmus Americana. Ulmus racemosa. Ulmus fulva. Abies balsamea. Chionanthus Virginica. Celtis occidentalis. Viburnum prunifolium. Crataegus coccinea var. mollis. Taxa Canadensis. Carya porcinæ. Carya alba. Carya amara. Carya tomentosa.	        Catalpa catalpa. Cupressus thyoides.  Castanea dentata. Populus deltoides.      Hicoria glabra. Hicoria ovata. Hicoria minima. Hicoria alba.	        Catalpa catalpa. Juniperus virginiana. Chamaecyparis thyoides.  Prunus virginiana. Fraxinus pennsylvanica. Castanea dentata. Populus deltoides.      Ulmus americana. Ulmus pubescens. Chionanthus virginica.  Taxa canadensis. Hicoria glabra. Hicoria ovata. Hicoria minima. Hicoria alba.
	Ilex opaca. Carpinus Caroliniana.  Ostrya Virginica.  Aesculus Hippocastanum. Ilex monticola. Gymnocladus Canadensis.	  Carpinus Caroliniana.  Ostrya Virginiana.  Gymnocladus dioica.	  Carpinus caroliniana. Ostrya virginiana.  Aesculus hippocastanum. Gymnocladus dioica.

AMES

Manual). The nomenclature of but consistent in its standard form in the use a time, and the to a popular

SUBWORTH.

gra.

coolata.

icana.  
sylvanica.  
rolliniana.  
aricana.

unica.

andra.

propus.

ipa.

rginiana.  
is thyrifera.

iana.  
sylvanica.  
stata.

oides.

cana.

cone.

virginia.

ensis.

na.

na.

balnea.

na.

montanum.

delica.

	Dr. ASA GRAY.	C. S. BARRETT.	Geo. B. SUBWORTH.
	Larch, American, or Hackmatack.	Larix Americana.	Larix laricina.
	Linden, American, or Basswood.	Tilia Americana.	Tilia americana.
	Liquidambar, or Sweet Gum.	Liquidambar styraciflua.	Robinia pseudacacia.
	Locust.	Robinia Pseudacacia.	Gleditsia triacanthos.
	Locust, Hoey.	Gleditsia triacanthos.	
	Magnolia, Small, or Sweet Bay.	Magnolia glauca.	
	Maple, Ash-leaved, or Box Elder.	Negundo aceroides.	Acer negundo.
	Maple, Black Sugar.	Acer saccharinum var. nigrum.	Acer saccharum nigrum.
	Maple, Mountain.	Acer spicatum.	
	Maple, Norway.	Acer platanoides.	
	Maple, Red, or Swamp.	Acer rubrum.	
	Maple, Striped, or Goosefoot.	Acer Pennsylvanicum.	Acer pennsylvanicum.
	Maple, Sugar, or Rock.	Acer saccharinum.	Acer saccharum.
	Maple, White, or Silver.	Acer dasycarpum.	Acer saccharinum.
	Mulberry, Red.	Morus rubra.	
	Oak, Basket, or Cow.	Quercus Michauxii.	Quercus michauxii.
	Oak, Black.	Quercus coccoea var. tinctoria.	Quercus velutina (Yellow Oak).
	Oak, Black Jack.	Quercus nigra.	Quercus marilandica.
	Oak, Bur, or Overcup.	Quercus macrocarpa.	
	Oak, Chestnut.	Quercus prinus.	
	Oak, Laurel.	Quercus imbricaria.	
	Oak, Pin.	Quercus palustris.	Quercus minor.
	Oak, Post, or Iron.	Quercus stellata.	
	Oak, Red.	Quercus rubra.	
	Oak, Scarlet.	Quercus coccinea.	
	Oak, Spanish.	Quercus falcata.	Quercus digitata.
	Oak, Swamp White.	Quercus bicolor.	Quercus platanoides.
	Oak, Water.	Quercus aquatica.	Quercus nigra.
	Oak, White.	Quercus alba.	
	Oak, Willow.	Quercus Phellos.	Quercus phellos.
	Oak, Yellow Chestnut.	Quercus Muhlbergii.	Quercus acuminata (Chinquapin Oak).
	Papaw, or Custard Apple.	Asimina triloba.	
	Persea mos.	Diospyros Virginiana.	Diospyros virginiana.
	Pine, Gray, or Jack.	Pinus Banksiana.	Pinus divaricata.
	Pine, Jersey Scrub.	Pinus inops.	Pinus Virginiana.
	Pine, Loblolly, or Old Field.	Pinus taeda.	Pinus taeda.
	Pine, Northern Pitch.	Pinus rigida.	
	Pine, Red, or Norway.	Pinus resinosa.	
	Pine, Southern Yellow, or Georgia, or Long-leaf.	Pinus palustris.	
	Pine, Table Mountain.	Pinus pungens.	Pinus strobus.
	Pine, White.	Pinus strobus.	Pinus echinata.
	Pine, Yellow, Short-leaf Pine.	Pinus mitis.	Pinus nigra.
	Plant, Canada.	Prunus Americana.	
	Poplar, Balsam.	Populus balsamifera.	
	Poplar, Balsam — Varieties.	Populus balsamifera var. intermedia.	
		Populus balsamifera var. latifolia.	
		Populus balsamifera var. virginiana.	
	Poplar, White.	Populus alba.	Populus alba.
	Red Bud, or Judas Tree.	Cercis Canadensis.	Cercis canadensis.
	Sassafras.	Sassafras officinale.	Sassafras sassafras.
	Spruce, Black.	Pinus nigra.	Pinus meriana.
	Spruce, Red.	Pinus nigra var. rubra.	Pinus rubens.
	Spruce, White, or Cat.	Pinus alba.	Pinus canadensis.
	Thorn, White, or Scirpifruited.	Crataegus coccinea.	
	Tulip Tree.	Liriodendron tulipifera.	
	Tupelo, or Sour Gum.	Nyssa sylvatica.	
	Umbrella Tree.	Magnolia Umbrella.	Magnolia tripetala.
	Viburnum, Sweet, or Sheepberry.	Viburnum Lentago.	Viburnum lentago.
	Walnut, Black.	Juglans nigra.	
	Willow, Black.	Salix nigra.	
	Willow, Crack.	Salix fragilis.	
	Willow, Heart-leaved.	Salix cordata.	
	Willow, Long-leaved.	Salix longifolia.	Salix fluviatilis.
	Willow, Weeping.	Salix Babylonica.	Salix babylonica.
	Willow, White.	Salix alba var. carulea.	
	Yellowwood, or Virgilia.	Cladrastis tinctoria.	Cladrastis lutea.
		Larix laricina.	
		Acer negundo.	
		Acer barbatum var. nigrum.	
		Acer barbatum.	
		Acer saccharinum.	
		Quercus velutina.	
		Quercus Marilandica.	
		Quercus minor.	
		Quercus digitata.	
		Quercus platanoides.	
		Quercus nigra.	
		Quercus acuminata.	
		Pinus divaricata.	
		Pinus Virginiana.	
		Pinus echinata.	
		Prunus nigra.	
		Populus alba.	
		Sassafras Sassafras.	
		Pinus Meriana.	
		Pinus rubens.	
		Pinus Canadensis.	
		Magnolia tripetala.	
		Salix fluviatilis.	
		Cladrastis lutea.	

## ALPHABETICAL INDEX

OF THE FOUR SERIES OF WAWSIDE TREES.

	Series Pp.		Series Pp.		Series Pp.		Series Pp.
Able Tree	11-11	<i>Chemycarpis sphaeroides</i>	IV-25	Maple, Rock	111-11	<i>Populus monilifera</i>	11-21
<i>Abies balsamea</i>	IV-21	Cherry, Bird	1-13	Maple, Silver	111-17	<i>Populus tremuloides</i>	11-21
<i>Acer dasycarpum</i>	111-17	Cherry, Black	1-15	Maple, Striped	111-9	<i>Prunus americana</i>	1-23
<i>Acer glabrum</i>	IV-7	Cherry, Choke	1-15	Maple, Sugar	111-11	<i>Prunus nigra</i>	1-13
<i>Acer pensylvanicum</i>	111-9	Cherry, Red	1-13	Maple, Swamp	111-19	<i>Prunus pennsylvanica</i>	1-13
<i>Acer platanoides</i>	111-19	Chestnut	11-5	Maple, White	111-17	<i>Prunus serotina</i>	1-15
<i>Acer rubrum</i>	111-19	<i>Chionanthus virginica</i>	111-5	Mockernut	IV-3	<i>Prunus virginiana</i>	1-16
<i>Acer saccharinum</i>	111-11	<i>Cladrastis florida</i>	111-14	<i>Morus rubra</i>	1-21	<i>Prunus americana</i>	111-23
<i>Acer saccharinum</i> var. <i>ni-</i> <i>grum</i>	111-11	<i>Cornus alternifolia</i>	111-3	Mulberry, Red	1-21	<i>Quercus alba</i>	11-17
<i>Acer spicatum</i>	111-9	<i>Cornus florida</i>	111-3	<i>Nyssa ocreoides</i>	IV-7	<i>Quercus agrifolia</i>	11-23
<i>Aschus glabra</i>	IV-13	Cottonwood	11-11	<i>Nyssa sylvatica</i>	1-5	<i>Quercus bicolor</i>	11-19
<i>Aschus hippocastanum</i>	IV-13	<i>Crataegus coccinea</i>	11-15	Oak, Basket	11-19	<i>Quercus cocinea</i>	11-21
<i>Aschus Otobora</i>	IV-13	<i>Crataegus coccinea</i> , var. <i>mollis</i>	11-15	Oak, Black	11-21	<i>Quercus var. bicolor</i>	11-21
Ash, Green	111-15	Cucumber Tree	1-3	Oak, Black Jack	11-23	<i>Quercus dilatata</i>	11-21
<i>Alnus glaberrima</i>	1-11	Custard Apple	1-5	Oak, Bar	11-17	<i>Quercus falcata</i>	11-21
Ash, Black	IV-25	<i>Diopatra virginiana</i>	1-5	Oak, Chestnut	11-19	<i>Quercus tinctoria</i>	11-23
Ash, Blue	IV-9	Dogwood, Alternate-leaved	111-3	Oak, Cow	11-19	<i>Quercus macrocarpa</i>	11-17
Ash, Green	IV-9	Dogwood, Flowering	111-3	Oak, Iron	11-17	<i>Quercus marilandica</i>	11-23
Ash, Mountain	111-23	Elm, American	1-17	Oak, Laurel	11-23	<i>Quercus Michauxii</i>	11-19
Ash, Red	IV-9	Elm, Corky White	1-19	Oak, Overcup	11-17	<i>Quercus Muhlenbergii</i> var. <i>minuta</i>	11-19
Ash, Swamp	IV-11	Elm, Red	2-17	Oak, Pin	11-17	<i>Quercus nigra</i>	11-23
Ash, Water	IV-11	Elm, Slippery	2-17	Oak, Post	11-17	<i>Quercus palustris</i>	11-21
Ash, White	IV-7	Elm, White	2-17	Oak, Red	11-17	<i>Quercus phellos</i>	11-23
<i>Adiantum trichum</i>	1-5	<i>Eriogonum europaeum</i>	111-7	Oak, Scarlet	11-21	<i>Quercus prinus</i>	11-29
Aspen	11-11	<i>Fagus americana</i>	11-5	Oak, Spanish	11-19	<i>Quercus rubra</i>	11-21
Aspen, Large-toothed	11-11	<i>Fagus ferruginea</i>	11-5	Oak, Swamp White	11-19	<i>Quercus rubra</i>	11-17
Aspen, Small-toothed	1-9	Fl. Balsam	IV-21	Oak, Water	11-23	<i>Quercus tinctoria</i>	11-21
Balm of Gilead	11-11	<i>Fraxinus americana</i>	IV-7	Oak, White	11-17	Red Bud	1-5
Basswood	1-9	<i>Fraxinus platycarpa</i>	IV-11	Oak, Willow	11-29	<i>Rubia prostrata</i>	111-23
Basswood, Small-leaved	1-9	<i>Fraxinus pubescens</i>	IV-9	Oak, Yellow Chestnut	11-19	<i>Salis alba</i> var. <i>carolina</i>	11-9
Beech	11-5	<i>Fraxinus quadrangularis</i>	IV-9	Ostrya virginiana	11-3	<i>Salis balsamifera</i>	11-9
Beech, Water	11-3	<i>Fraxinus umbellifolia</i>	IV-11	Ostrya virginiana	11-3	<i>Salis cordata</i>	11-7
<i>Betula alba</i>	1-23	Frigo Tree	111-5	Paper	1-5	<i>Salis fragilis</i>	11-7
<i>Betula pendula</i>	1-23	<i>Gleditsia triacanthos</i>	111-23	<i>Picea alba</i>	IV-21	<i>Salis longifolia</i>	11-7
<i>Betula pubescens</i>	1-23	<i>Gymnocladia canadensis</i>	111-21	<i>Picea nigra</i>	IV-23	<i>Salis nigra</i>	11-7
<i>Betula papyrifera</i>	1-25	Hackberry	1-19	<i>Picea rubra</i>	IV-21	<i>Sassafras officinale</i>	1-7
<i>Betula populifolia</i>	1-23	Hackmatack	IV-21	<i>Picea canadensis</i>	IV-5	<i>Sassafras sassafras</i>	1-7
Bush, Black	1-21	Heubach	IV-21	Pine, Georgia	IV-13	Scarlet Haw	11-15
Bush, Green	1-25	Hickory	IV-3	Pine, Gray	IV-19	Shagbark	IV-3
Bush, Cat-leaved White	1-25	Hickory, Brown	IV-3	Pine, Jersey Scrub	IV-17	Shoeberry	11-17
Bush, Gray	1-23	Hickory, Swamp	IV-3	Pine, Labilly	IV-15	Stone Gum	1-5
Bush, Paper	1-25	Hickory, White-heart	IV-3	Pine, Northern Pitch	IV-17	Spruce, Black	IV-23
Bush, Red	1-25	Holly, American	1-11	Pine, Norway	IV-19	Spruce, Cat	IV-23
Bush, River	1-25	Horsetail	11-3	Pine, Old-field	IV-15	Spruce, Red	IV-23
Bush, Sweet	1-21	Horsetail, Hop	11-3	Pine, Red	IV-19	Spruce, White	IV-23
Bush, White	1-25	<i>Ilex americana</i>	IV-23	Pine, Southern Yellow	IV-15	Sugarbush	1-19
Bush, Yellow	1-23	<i>Ilex verticillata</i>	1-11	Pine, Table Mountain	IV-17	Sweet Bay	1-3
Butternut	IV-5	<i>Ilex opaca</i>	1-11	Pine, White	IV-15	Sycamore	11-23
Bush, Honey	111-7	<i>Juglans cinerea</i>	1-11	Pine, Yellow	IV-19	Tamarack	11-23
Bush, Walnut	111-25	<i>Juglans nigra</i>	111-25	<i>Pinus banksiana</i>	IV-19	Thorn, Scarlet-braked	11-15
Bush, White	IV-7	<i>Juniperus virginiana</i>	111-25	<i>Pinus inops</i>	IV-17	Thorn, White	11-15
Bush, Yellow	IV-13	<i>Lamb-ear</i>	IV-25	<i>Pinus mitis</i>	IV-19	<i>Tilia americana</i>	1-9
Burning Bush	111-7	<i>Lamb-ear</i> Cudweed Tree	111-25	<i>Pinus palustris</i>	IV-15	<i>Tilia pubescens</i>	1-9
Butterbean	111-25	<i>Larix laricina</i>	IV-21	<i>Pinus pungens</i>	IV-17	<i>Tilia occidentalis</i>	IV-25
Butterbean	111-25	<i>Larix laricina</i>	IV-21	<i>Pinus resinosa</i>	IV-19	<i>Tilia canadensis</i>	IV-21
Butterbean	111-25	<i>Liriodendron tulipifera</i>	1-7	<i>Pinus rigida</i>	IV-17	Tulip Tree	1-7
<i>Carya alleghaniensis</i>	11-3	Linn. American	1-9	<i>Pinus strobus</i>	IV-15	Tupelo	1-3
<i>Carya amara</i>	IV-3	<i>Liriodendron tulipifera</i>	1-7	<i>Pinus taeda</i>	IV-15	<i>Ulmus americana</i>	1-17
<i>Carya floridana</i>	IV-3	Lemon, Honey	111-23	<i>Platanus occidentalis</i>	11-25	<i>Ulmus fulva</i>	1-17
<i>Carya tomentosa</i>	IV-3	Magpie, Honey	1-3	Pine, Canada	1-3	<i>Ulmus racemosa</i>	1-19
<i>Cassia disticha</i>	11-5	<i>Magnolia glauca</i>	1-3	Poplar, Balsam	11-13	Umbrella Tree	1-3
<i>Cassia fulva</i>	11-5	<i>Magnolia speciosa</i>	1-3	Poplar, White	11-13	<i>Viburnum lentago</i>	111-7
<i>Cassia triflora</i>	111-5	<i>Magnolia virginiana</i>	1-3	<i>Populus alba</i>	11-11	<i>Viburnum prunifolium</i>	111-7
<i>Celastrus scandens</i>	11-11	Maple, Ash-leaved	111-11	<i>Populus balsamifera</i>	11-13	<i>Viburnum, Sweet</i>	111-7
<i>Celastrus scandens</i>	11-11	Maple, Black Sugar	111-11	<i>Populus balsamifera</i> , var. <i>can-</i> <i>adensis</i>	11-13	Virginia	111-14
<i>Celastrus scandens</i>	11-11	Maple, Green-leaved	111-11	<i>Populus balsamifera</i> , var. <i>in-</i> <i>ternata</i>	11-13	Willow, Black	11-9
<i>Celastrus scandens</i>	11-11	Maple, Mountain	111-9	<i>Populus balsamifera</i> , var. <i>lati-</i> <i>folia</i>	11-13	Willow, Crack	11-7
<i>Celastrus scandens</i>	11-11	Maple, Norway	111-19	<i>Populus balsamifera</i> , var. <i>vi-</i> <i>cinifolia</i>	11-13	Willow, Heart-leaved	11-7
<i>Celastrus scandens</i>	11-11	Maple, Red	111-19	<i>Populus grandidentata</i>	11-11	Willow, Long-leaved	11-7
						Willow, Weeping	11-9
						Willow, White	11-9
						Yellowwood	111-14







