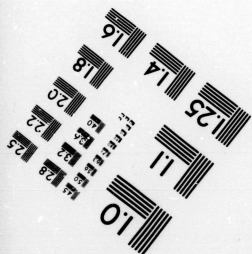
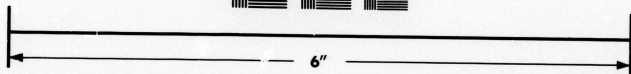
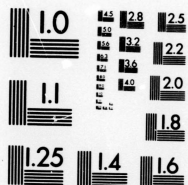
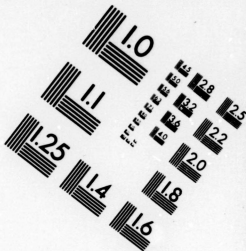
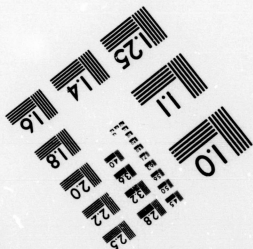


IMAGE EVALUATION
TEST TARGET (MT-3)



Photographic
Sciences
Corporation

23 WEST MAIN STREET
WEBSTER, N.Y. 14580
(716) 872-4503



CIHM/ICMH
Microfiche
Series.

CIHM/ICMH
Collection de
microfiches.



Canadian Institute for Historical Microreproductions / Institut canadien de microreproductions historiques

© 1983

Technical and Bibliographic Notes/Notes techniques et bibliographiques

The Institute has attempted to obtain the best original copy available for filming. Features of this copy which may be bibliographically unique, which may alter any of the images in the reproduction, or which may significantly change the usual method of filming, are checked below.

L'Institut a microfilmé le meilleur exemplaire qu'il lui a été possible de se procurer. Les détails de cet exemplaire qui sont peut-être uniques du point de vue bibliographique, qui peuvent modifier une image reproduite, ou qui peuvent exiger une modification dans la méthode normale de filmage sont indiqués ci-dessous.

- | | |
|--|--|
| <input type="checkbox"/> Coloured covers/
Couverture de couleur | <input type="checkbox"/> Coloured pages/
Pages de couleur |
| <input type="checkbox"/> Covers damaged/
Couverture endommagée | <input type="checkbox"/> Pages damaged/
Pages endommagées |
| <input type="checkbox"/> Covers restored and/or laminated/
Couverture restaurée et/ou pelliculée | <input type="checkbox"/> Pages restored and/or laminated/
Pages restaurées et/ou pelliculées |
| <input type="checkbox"/> Cover title missing/
Le titre de couverture manque | <input checked="" type="checkbox"/> Pages discoloured, stained or foxed/
Pages décolorées, tachetées ou piquées |
| <input type="checkbox"/> Coloured maps/
Cartes géographiques en couleur | <input checked="" type="checkbox"/> Pages detached/
Pages détachées |
| <input type="checkbox"/> Coloured ink (i.e. other than blue or black)/
Encre de couleur (i.e. autre que bleue ou noire) | <input checked="" type="checkbox"/> Showthrough/
Transparence |
| <input type="checkbox"/> Coloured plates and/or illustrations/
Planches et/ou illustrations en couleur | <input type="checkbox"/> Quality of print varies/
Qualité inégale de l'impression |
| <input type="checkbox"/> Bound with other material/
Relié avec d'autres documents | <input type="checkbox"/> Includes supplementary material/
Comprend du matériel supplémentaire |
| <input type="checkbox"/> Tight binding may cause shadows or distortion
along interior margin/
La reliure serrée peut causer de l'ombre ou de la
distortion le long de la marge intérieure | <input type="checkbox"/> Only edition available/
Seule édition disponible |
| <input type="checkbox"/> Blank leaves added during restoration may
appear within the text. Whenever possible, these
have been omitted from filming/
Il se peut que certaines pages blanches ajoutées
lors d'une restauration apparaissent dans le texte,
mais, lorsque cela était possible, ces pages n'ont
pas été filmées. | <input type="checkbox"/> Pages wholly or partially obscured by errata
slips, tissues, etc., have been refilmed to
ensure the best possible image/
Les pages totalement ou partiellement
obscurcies par un feuillet d'errata, une pelure,
etc., ont été filmées à nouveau de façon à
obtenir la meilleure image possible. |
| <input type="checkbox"/> Additional comments:
Commentaires supplémentaires: | |

This item is filmed at the reduction ratio checked below/
Ce document est filmé au taux de réduction indiqué ci-dessous.

10X	14X	18X	22X	26X	30X
<input type="checkbox"/>	<input type="checkbox"/>	<input type="checkbox"/>	<input type="checkbox"/>	<input checked="" type="checkbox"/>	<input type="checkbox"/>
12X	16X	20X	24X	28X	32X

The copy filmed here has been reproduced thanks to the generosity of:

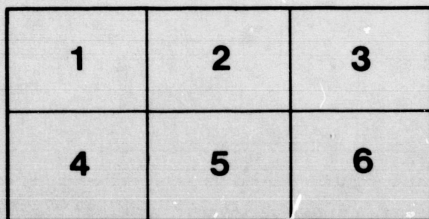
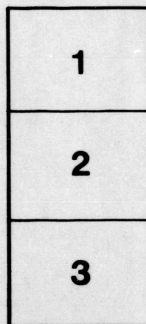
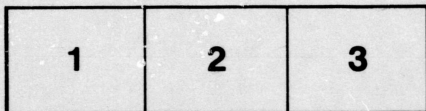
National Library of Canada

The images appearing here are the best quality possible considering the condition and legibility of the original copy and in keeping with the filming contract specifications.

Original copies in printed paper covers are filmed beginning with the front cover and ending on the last page with a printed or illustrated impression, or the back cover when appropriate. All other original copies are filmed beginning on the first page with a printed or illustrated impression, and ending on the last page with a printed or illustrated impression.

The last recorded frame on each microfiche shall contain the symbol \rightarrow (meaning "CONTINUED"), or the symbol ∇ (meaning "END"), whichever applies.

Maps, plates, charts, etc., may be filmed at different reduction ratios. Those too large to be entirely included in one exposure are filmed beginning in the upper left hand corner, left to right and top to bottom, as many frames as required. The following diagrams illustrate the method:



L'exemplaire filmé fut reproduit grâce à la générosité de:

Bibliothèque nationale du Canada

Les images suivantes ont été reproduites avec le plus grand soin, compte tenu de la condition et de la netteté de l'exemplaire filmé, et en conformité avec les conditions du contrat de filmage.

Les exemplaires originaux dont la couverture en papier est imprimée sont filmés en commençant par le premier plat et en terminant soit par la dernière page qui comporte une empreinte d'impression ou d'illustration, soit par le second plat, selon le cas. Tous les autres exemplaires originaux sont filmés en commençant par la première page qui comporte une empreinte d'impression ou d'illustration et en terminant par la dernière page qui comporte une telle empreinte.

Un des symboles suivants apparaîtra sur la dernière image de chaque microfiche, selon le cas: le symbole \rightarrow signifie "A SUIVRE", le symbole ∇ signifie "FIN".

Les cartes, planches, tableaux, etc., peuvent être filmés à des taux de réduction différents. Lorsque le document est trop grand pour être reproduit en un seul cliché, il est filmé à partir de l'angle supérieur gauche, de gauche à droite, et de haut en bas, en prenant le nombre d'images nécessaire. Les diagrammes suivants illustrent la méthode.

VII.—*On Some Deposits of Titaniferous Iron Ore in the Counties of Haliburton and Hastings, Ontario.*—By E. J. CHAPMAN, PH.D., LL. D.

(Read May 23, 1884.)

Numerous deposits of iron ore, chiefly the magnetic oxide, occur throughout the Counties of Victoria, Haliburton, Peterborough and Hastings, in Ontario. These deposits are, for the greater part, if not wholly, in the form of irregular masses, or "stocks," mostly of large dimensions, associated with dark-green pyroxenic or hornblendic rock-matter, in gneissoid strata of Laurentian age. The iron ore, therefore, of this district occurs under conditions closely similar to those of the great iron region of Arendal, in Norway, both as regards its chemical nature and conditions of occurrence, and its association with hornblende or pyroxenic matter,—the latter appearing in many cases partly to surround or enclose the iron ore, as in the so-called "Skölars" or "Stockscheiders" (*i. e.*, sheathed stocks) of Swedish and German miners. In Haliburton and adjacent counties, these stocks appear to lie, as a rule, in belts or zones of country extending in a general westerly and easterly direction.¹ A belt of this kind, forming a comparatively high and broken range of considerable breadth, lies on each side of the stream known as Burnt River, in the townships of Snowdon, Glamorgan, Monmouth and Cardiff, and extends into Hastings County in the townships of Faraday and Dungannon.

In the range immediately south of Burnt River, the ore is chiefly of coarse-granular texture, while in the more northern range the ore presents a remarkably crystalline and cleavable structure. So striking are these structural peculiarities that one might almost infer the existence of some deeply-seated connection between the separate deposits of each respective range, were it not for the presence of a large amount of titanium in one of the deposits, while in other places the ore is absolutely free from the slightest trace of that metal. In this immediate district the titaniferous ore occurs in the more southern of these two ranges; but, as far as my observations go, at one spot only, known as the "Pine Lake location." This is on lot 35 of the fourth concession of Glamorgan, about half a mile south of Burnt River, and a couple of miles, or rather less, south of the Monk road. The mineral at this spot forms an enormous deposit of black magnetic ore, of granular texture, rising abruptly in an immense ledge, or succession of ledges, to a height of from eighty to one hundred feet above the general level of the ground. It is exposed in an easterly and westerly direction, over a length of at least 1,800 feet, with an average width of about 140 feet. Actual measurements vary from seventy feet in some places to 198 in others. Variations of this kind are found to occur more or less in all stock-formed deposits, owing to the ir-

¹ Those known to the writer, from personal inspection, occur chiefly as follows:—In Snowdon: lot 33, concession 3; lots 26, 27, con. 4. In Glamorgan: lot 34, con. 2; lot 35, con. 4; lots 30, 31, con. 13; lot 27, con. 15. In Monmouth: lots 6, 7, con. 1; lot 6, con. 4; lot 5, con. 5; lots 7, 8, con. 6; lot 30, con. 13. In Herschel: lot 32, con. 1. In Faraday, near Bancroft village. In Dungannon: Lot 29, con. 13.

regular form of the ore-mass. The average specific gravity of the ore equals 4.437. The amount of ore practically above ground cannot be less, therefore, than from 200,000 to 300,000 Canadian tons. An analysis made from samples of ore taken from different parts of the deposit gave me the following results :—

ORE DRIED at 212° F. Sp. GR.=4.437.

Fe ² O ³	71.87=Fe 52.04%
Ti O ² —13.30=Ti ² O ³	12.01=Ti 8.11%
S.....	0.06
P.....	Trace
Ca CO ₃	0.86
Pyroxenic rock-matter.....	15.28
	—
	100.08

The ore-deposits of other portions of this iron range south of Burnt River, and all the deposits in the range immediately north of the river, are quite free from titanium; but some small deposits of magnetic ore, in which a certain amount of titanium is present, occur to the north of this northern range, in the township of Minden.

Turning now to the south-east of this section of country, we find in the township of Tudor, in North Hastings (lots 55–57 of the Free Grant district) a large deposit of titaniferous magnetite, very similar in character to the Pine Lake ore. This deposit, known as the Louise Mine, is also in the form of an immense stock, or irregular mass, the principal axis of which extends in a direction a little north of east. It forms a steep slope or ridge, rising above the general surface of the ground to an average level of nearly one hundred feet. Trenches opened across the face of the slope, at different levels, show the ore-mass to extend in width from sixty feet in some places to over 160 feet in others, but outlying exposures indicate a still greater extension; while the length of the deposit in an easterly and westerly direction exceeds 1,400 feet. The ore itself is of a granular texture, black, and strongly magnetic, with specific gravity varying from 4.45 to 4.48.

An analysis, from a sieved amount of ore weighing several pounds, gave results as follows :—

ORE DRIED at 212° F. Sp. GR.=4.48.

Fe ² O ³	83.36=Fe 60.36%
Ti O ² —8.08=Ti ² O ³	7.30=Ti 5.03%
P.....	Trace
S.....	0.08
Pyroxenic rock-matter.....	9.31
	—
	100.05

This titaniferous deposit, like that in Glamorgan, lies in the more or less immediate vicinity of iron ore deposits, in which no trace of titanium can be detected. Some of the more important of these comprise the so-called Emily Mine, on lots 6–8 of the nineteenth concession of Tudor; the Baker Mine, on lot 18, concession 18, of the same township; and the Batchelor Mine, on lots 15, 16, of the eighth concession of Wollaston. Analyses of these and other iron ores from this district of Ontario will be found in a paper, by the writer, communicated to the chemical section of our Society.

