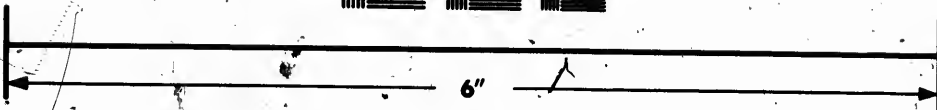
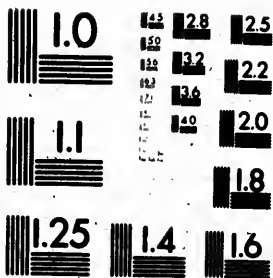
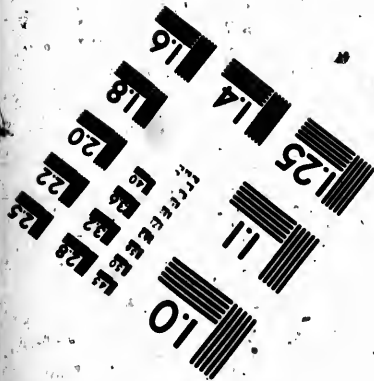


**IMAGE EVALUATION  
TEST TARGET (MT-3)**



Canada



**Photographic  
Sciences  
Corporation**

23 WEST MAIN STREET  
WEBSTER, N.Y. 14590  
(716) 872-4503

**CIHM  
Microfiche  
Series  
(Monographs)**

**ICMH  
Collection de  
microfiches  
(monographies)**



**Canadian Institute for Historical Microreproductions / Institut canadien de microreproductions historiques**

**© 1991**

Technical and Bibliographic Notes / Notes techniques et bibliographiques

The Institute has attempted to obtain the best original copy available for filming. Features of this copy which may be bibliographically unique, which may alter any of the images in the reproduction, or which may significantly change the usual method of filming, are checked below.

L'Institut a microfilmé le meilleur exemplaire qu'il lui a été possible de se procurer. Les détails de cet exemplaire qui sont peut-être uniques du point de vue bibliographique, qui peuvent modifier une image reproduite, ou qui peuvent exiger une modification dans la méthode normale de filmage sont indiqués ci-dessous.

- Coloured covers/  
Couverture de couleur
- Covers damaged/  
Couverture endommagée
- Covers restored and/or laminated/  
Couverture restaurée et/ou pelliculée
- Cover title missing/  
Le titre de couverture manque
- Coloured maps/  
Cartes géographiques en couleur
- Coloured ink (i.e. other than blue or black)/  
Encre de couleur (i.e. autre que bleue ou noire)
- Coloured plates and/or illustrations/  
Planches et/ou illustrations en couleur
- Bound with other material/  
Relié avec d'autres documents
- Tight binding may cause shadows or distortion along interior margin/  
La reliure serrée peut causer de l'ombre ou de la distorsion le long de la marge intérieure
- Blank leaves added during restoration may appear within the text. Whenever possible, these have been omitted from filming/  
Il se peut que certaines pages blanches ajoutées lors d'une restauration apparaissent dans le texte, mais, lorsque cela était possible, ces pages n'ont pas été filmées.

- Coloured pages/  
Pages de couleur
  - Pages damaged/  
Pages endommagées
  - Pages restored and/or laminated/  
Pages restaurées et/ou pelliculées
  - Pages discoloured, stained or foxed/  
Pages décolorées, tachetées ou piquées
  - Pages detached/  
Pages détachées
  - Showthrough/  
Transparence
  - Quality of print varies/  
Qualité inégale de l'impression
  - Continuous pagination/  
Pagination continue
  - Includes index(es)/  
Comprend un (des) index
- Title on header taken from:/  
Le titre de l'en-tête provient:
- Title page of issue/  
Page de titre de la livraison
  - Caption of issue/  
Titre de départ de la livraison
  - Masthead/  
Générique (périodiques) de la livraison

Additional comments:/  
Commentaires supplémentaires:

This item is filmed at the reduction ratio checked below/  
Ce document est filmé au taux de réduction indiqué ci-dessous.

10X	12X	14X	16X	18X	20X	22X	24X	26X	28X	30X	32X
							✓				

The copy filmed here is to the generosity of

Library of Archives

The images appear possible considering of the original copy filming contract sp

Original copies in p beginning with the the last page with a sion, or the back of other original copie first page with a pr sion, and ending on or illustrated impre

The last recorded f shall contain the sy TINUED"), or the s whichever applies.

Maps, plates, chart different reduction entirely included in beginning in the up right and top to bot required. The follow method:



med here has been reproduced thanks  
osity of:

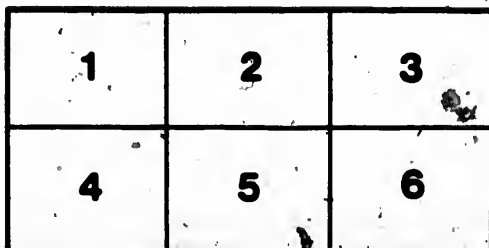
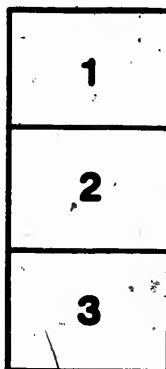
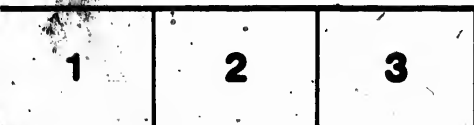
Library of the National  
Archives of Canada

appearing here are the best quality  
considering the condition and legibility  
of copy and in keeping with the  
exact specifications.

les in printed paper covers are filmed  
with the front cover and ending on  
a with a printed or illustrated impres-  
sion on the back cover when appropriate. All  
other copies are filmed beginning on the  
back with a printed or illustrated impres-  
sion on the first page with a printed  
impression.

Recorded frame on each microfiche  
the symbol  $\blacktriangleright$  (meaning "CON-  
TINUE") or the symbol  $\blacktriangledown$  (meaning "END").  
The following applies.

Maps, charts, etc., may be filmed at  
different reduction ratios. Those too large to be  
filmed in one exposure are filmed  
starting from the upper left hand corner, left to  
right and top to bottom, as many frames as  
necessary. The following diagrams illustrate the



L'exemplaire filmé fut reproduit grâce à la  
générosité de:

La bibliothèque des Archives  
nationales du Canada

Les images suivantes ont été reproduites avec le  
plus grand soin, compte tenu de la condition et  
de la netteté de l'exemplaire filmé, et en  
conformité avec les conditions du contrat de  
filmage.

Les exemplaires originaux dont la couverture en  
papier est imprimée sont filmés en commençant  
par le premier plat et en terminant soit par la  
dernière page qui comporte une empreinte  
d'impression ou d'illustration, soit par le second  
plat, selon le cas. Tous les autres exemplaires  
originaux sont filmés en commençant par la  
première page qui comporte une empreinte  
d'impression ou d'illustration et en terminant par  
la dernière page qui comporte une telle  
empreinte.

Un des symboles suivants apparaîtra sur la  
dernière image de chaque microfiche, selon le  
cas: le symbole  $\blacktriangleright$  signifie "A SUIVRE"; le  
symbole  $\blacktriangledown$  signifie "FIN".

Les cartes, planches, tableaux, etc., peuvent être  
filmés à des taux de réduction différents.  
Lorsque le document est trop grand pour être  
reproduit en un seul cliché, il est filmé à partir  
de l'angle supérieur gauche, de gauche à droite,  
et de haut en bas, en prenant le nombre  
d'images nécessaire. Les diagrammes suivants  
illustrent la méthode.

(All rights reserved.)

**ADVANCE PROOF**—(Subject to revision).

This proof is sent to you for discussion only, and on the express understanding that it is not to be used for any other purpose whatever.—(See Sec. 47 of the Constitution).

Canadian Society of Civil Engineers.

INCORPORATED 1887.

**TRANSACTIONS.**

N.B.—This Society, as a body, does not hold itself responsible for the facts and opinions stated in any of its publications.

**CEMENT MORTARS IN FREEZING WEATHER.**

By M. J. BUTLER.

(To be read Thursday, 12th April, 1894.)

In considering what is best to be done when it is found necessary to carry on masonry work in freezing weather, if one searches the records of cement mortars found in the Proceedings of the various Engineering Societies, in the standard text-books used as a guide in the practice of the Profession, it will be found that the verdict is "don't do it." Failures in the past can be, no doubt, traceable to the effects of frost; nevertheless, success may be had by taking the necessary precautions.

In the late fall of 1892 the writer was compelled to construct about 600 cubic yards of masonry. After consulting all available sources for information and precedents, added the following clause to the specifications governing the works under his direction:—

"No masonry will be allowed to be laid in freezing weather unless so ordered by the engineer, in which case the following precautions shall be taken:—The stones shall be warmed to remove any ice from the surface, and the mortar mixed with brine made as follows:—Dissolve one pound of salt in 18 gallons of water when the temperature is 32° F, and add one ounce of salt for every degree the temperature is below 30° F, or enough salt, whatever the temperature to prevent freezing."

"The sand shall be heated sufficiently to thaw any frozen particles." Cement and salt were furnished by the Railway Co.

In the actual carrying on of the work the steps taken were as follows:—

**CEMENT.**

A careful chemical analysis of the cement supplied showed the following composition:—

Lime	60.16
Silica	24.30
Aluminum and Iron Oxid	10.78
Magnesia	1.18
Alkalies	1.60

**FINENESS.**

Seven per cent. residue was left on a standard sieve of 10,000 meshes to the square inch, 6 per cent. of which passed through a sieve of 22,000 meshes to the square inch.

Quoted by J. J. R. Cross, Transactions American Society of Civil Engineers, Vol. XVI, p. 84, and there credited to the Royal Engineers; see also Baker's Treatise on Masonry Construction, page 543.

#### TENSILE STRENGTH.

Samples prepared with 25 percent. of water, and pressed with the fingers into the moulds, when allowed one day in air and six days in water, broke with an average tensile strain of 350 lbs. to the square inch.

#### HOT TEST.

All the cement used was carefully submitted to the boiling test in thin pots on glass. None of the samples showed any cracks, and but one or two left the glass.

#### SAND.

The sand used was clean, rather coarse, sharp river sand, very nearly all silica.

Knowing from the success of the hot test that there was no danger to be feared from "blowing," all the brine was made with very hot water. The sand was kept as hot as possible. The stones were not heated, but care was taken to see that no ice was on them.

During the construction of the work the temperature varied, between 39° above to 10° below zero F.

The whole work was carried forward to successful completion, and was and is satisfactory in every respect, no small credit being due to the contractor for the care and skill he showed in pushing on the work under very unfavourable conditions.

Another case where the masonry work was being built under the same specification, and where the contractor was obliged to furnish the salt, it was found that insufficient salt was used, and that as a consequence the outer portion of the mortar bed, about three inches back from the face, in the following spring was of about the consistency of leached ashes, which had to be raked out and replaced with fresh Portland cement mortar; the inner part of the mortar bed was set hard and solid—doubtless the outer portion froze solid, the inner being protected from the severe frost by the overlying stone and at the edge by the parts destroyed.

Another case where natural cement was used in stuccoing a building, having been put on in a coat about one inch thick, failed entirely. In fact, natural cements will not stand frost in the sense herein implied.

During the construction of the Kansas City Bridge,\* the beton, consisting of eight parts limestone, was broken to pass through a three-inch ring, two of sand and three of cement. It is an interesting fact that both masonry and beton were laid in the above works in the severe winter months by the use of hot sand and hot water. At the Quincy Bridge, during the coldest weather, each stone was held over a brazier of charcoal to draw out the frost. The mortar thus used was found the following spring to be as hard and perfect as any on the work.

During the construction of the Chignecto Ship Railway in Nova Scotia, some experiments were tried, which seemed to show a reduction in strength in the samples submitted to the testing machine.† Doubtless the effect of frost on small samples, from the fact that it will penetrate the whole mass, is more serious than in actual works where the effects will be confined to the outer edges of the mortar beds.

In the construction of the works of a lock at the St. Mary's Falls Canal ‡ in 1877, it was found that Portland cement mortars satisfactorily withstood the effects of frost, but that natural cement mortars were disintegrated to the depth of 3 or 4 inches; in the same locality a Portland cement concrete, which froze solid proved satisfactory.

\* Manual for Railroad Engineers, by Geo. L. Vose.

† Proceedings Inst. C. E., Vol. CVII.

‡ Transac. Amer. Soc. C. E., Vol. XVI, pp. 79 et seq.

The sample tests with various quantities of salt used in the above mentioned work go to show that the strength of the mortar increased with the quantity of salt used.

The Austrian Society of Civil Engineers & Architects have recently investigated the question of masonry construction in freezing weather. During a temperature below 26° F, 14 brick walls were built, each 3 ft. 4 ins. long, 6 ft. 8 in. high, and 10 in. thick. The following mortars were used:

(1) Common fat lime mortar, (2) Roman cement mortar, (3) Portland cement mortar, (4) 1 of Portland cement to 2 of lime, (5) cement and slag mortar. All these mortars were tried over with cold water and once with warm water (77° F), and some of them were tried with a 7 per cent. cold salt solution. Two walls were also built with a frost-proof mortar.—Patent Hausleitner.

The first three mortars were also tested on nine rubble masonry walls, the same length and height as the brick walls, and 15 ins. thick. The water was used with the same variations as above. Half of each wall was covered with boards, and the covered half showed in each case somewhat better results.

After three months the walls were examined; wherever lime had been used, either alone or with cement, the result was a failure.

The use of Roman cement gave different results according as it was used on brick or stone.

Portland cement with cold salt solution and frost-proof cement Patent Hausleitner were the only mortars which gave perfect satisfaction, and these were in good order when used as exterior finish.

Inasmuch as we in Canada are debarred from construction about four months in each year, if it be unsafe to build masonry work, it is considered important to show that with proper materials properly handled there need be no fear to use Portland cement mortar on account of cold weather; and in the hope that the resulting discussion will bring out many precedents the foregoing notes have been prepared.

(\*) Engineering News, 1894, p. 253, Vol. XXXI.

