

**CIHM
Microfiche
Series
(Monographs)**

**ICMH
Collection de
microfiches
(monographies)**



Canadian Institute for Historical Microreproductions/Institut canadien de microreproductions historiques

© 2000

Technical and Bibliographic Notes / Notes techniques et bibliographiques

The Institute has attempted to obtain the best original copy available for filming. Features of this copy which may be bibliographically unique, which may alter any of the images in the reproduction, or which may significantly change the usual method of filming are checked below.

- Coloured covers / Couverture de couleur
- Covers damaged / Couverture endommagée
- Covers restored and/or laminated / Couverture restaurée et/ou pelliculée
- Cover title missing / Le titre de couverture manque
- Coloured maps / Cartes géographiques en couleur
- Coloured ink (i.e. other than blue or black) / Encre de couleur (i.e. autre que bleue ou noire)
- Coloured plates and/or illustrations / Planches et/ou illustrations en couleur
- Bound with other material / Relié avec d'autres documents
- Only edition available / Seule édition disponible
- Tight binding may cause shadows or distortion along interior margin / La reliure serrée peut causer de l'ombre ou de la distorsion le long de la marge intérieure.
- Blank leaves added during restorations may appear within the text. Whenever possible, these have been omitted from filming / Il se peut que certaines pages blanches ajoutées lors d'une restauration apparaissent dans le texte, mais, lorsque cela était possible, ces pages n'ont pas été filmées.

Additional comments / Commentaires supplémentaires: Pagination is as follows: p. 155-163.
La pagination est comme suit: p. 155-163.

L'Institut a microfilmé le meilleur exemplaire qu'il lui a été possible de se procurer. Les détails de cet exemplaire qui sont peut-être uniques du point de vue bibliographique, qui peuvent modifier une image reproduite, ou qui peuvent exiger une modification dans la méthode normale de filmage sont indiqués ci-dessous.

- Coloured pages / Pages de couleur
- Pages damaged / Pages endommagées
- Pages restored and/or laminated / Pages restaurées et/ou pelliculées
- Pages discoloured, stained or foxed / Pages décolorées, tachetées ou piquées
- Pages detached / Pages détachées
- Showthrough / Transparence
- Quality of print varies / Qualité inégale de l'impression
- Includes supplementary material / Comprend du matériel supplémentaire
- Pages wholly or partially obscured by errata slips, tissues, etc., have been refilmed to ensure the best possible image / Les pages totalement ou partiellement obscurcies par un feuillet d'errata, une pelure, etc., ont été filmées à nouveau de façon à obtenir la meilleure image possible.
- Opposing pages with varying colouration or discolourations are filmed twice to ensure the best possible image / Les pages s'opposant ayant des colorations variables ou des décolorations sont filmées deux fois afin d'obtenir la meilleure image possible.

This item is filmed at the reduction ratio checked below /
Ce document est filmé au taux de réduction indiqué ci-dessous.

10x		14x		18x		22x		26x		30x	
							<input checked="" type="checkbox"/>				
12x		16x		20x		24x		28x		32x	

The copy filmed here has been reproduced thanks to the generosity of:

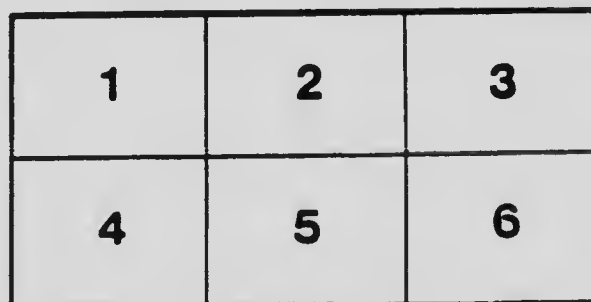
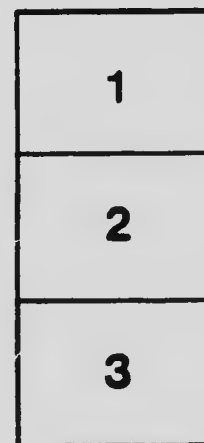
Royal Ontario Museum
Toronto

The images appearing here are the best quality possible considering the condition and legibility of the original copy and in keeping with the filming contract specifications.

Original copies in printed paper covers are filmed beginning with the front cover and ending on the last page with a printed or illustrated impression, or the back cover when appropriate. All other original copies are filmed beginning on the first page with a printed or illustrated impression, and ending on the last page with a printed or illustrated impression.

The last recorded frame on each microfiche shell contain the symbol \rightarrow (meaning "CONTINUED"), or the symbol ∇ (meaning "END"), whichever applies.

Maps, plates, charts, etc., may be filmed at different reduction ratios. Those too large to be entirely included in one exposure are filmed beginning in the upper left hand corner, left to right and top to bottom, as many frames as required. The following diagrams illustrate the method:



L'exemplaire filmé fut reproduit grâce à la générosité de:

Royal Ontario Museum
Toronto

Les images suivantes ont été reproduites avec le plus grand soin, compte tenu de la condition et de la netteté de l'exemplaire filmé, et en conformité avec les conditions du contrat de filmage.

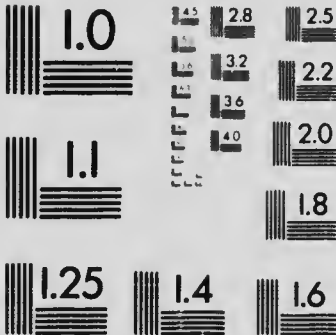
Les exemplaires originaux dont la couverture en papier est imprimée sont filmés en commençant par le premier plat et en terminant soit par la dernière page qui comporte une empreinte d'impression ou d'illustration, soit par le second plat, selon le cas. Tous les autres exemplaires originaux sont filmés en commençant par la première page qui comporte une empreinte d'impression ou d'illustration et en terminant par la dernière page qui comporte une telle empreinte.

Un des symboles suivants apparaître sur la dernière image de chaque microfiche, selon le cas: le symbole \rightarrow signifie "A SUIVRE", le symbole ∇ signifie "FIN".

Les cartes, planches, tableaux, etc., peuvent être filmés à des taux de réduction différents. Lorsque le document est trop grand pour être reproduit en un seul cliché, il est filmé à partir de l'angle supérieur gauche, de gauche à droite, et de haut en bas, en prenant le nombre d'images nécessaire. Les diagrammes suivants illustrent la méthode.

MICROCOPY RESOLUTION TEST CHART

(ANSI and ISO TEST CHART No. 2)



APPLIED IMAGE Inc

1653 East Main Street
Rochester, New York 14609 USA
(716) 482 - 0300 - Phone
(716) 288 - 5989 - Fax

*Bibliography of Canadian Zoology for 1910.**(Exclusive of Entomology)**

BY LAWRENCE M. LAMBE, F.C.S.

(Read by title, May 17, 1911.)

INVERTEBRATA.

PROTOZOA.

CUSIMAN, JOSEPH AUGUSTINE.

A monograph of the Foraminifera of the north Pacific ocean. Part I. Astrorhizidae and Lituolidae.

Smithsonian Institution, United States National Museum, Bulletin 71, 1910, pp. 1-134, text figures 1-203

Cyclammina pusilla, H. B. Brady, is recorded from off the coast of British Columbia. Dr. J. F. Whiteaves in the Transactions of the Royal Society of Canada for 1886, gives a list of twenty species of foraminifera from British Columbian waters. In the above bulletin *Rhabdammina abyssorum*, W. B. Carpenter, *Haplophragmoides canariensis* (d'Orlagny) and *Trochammina squamata*, Jones, are species from the North Pacific which are also included in Dr. Whiteaves's list of 1886.

CELENERATA (ZOOPLYL. S).

BIGELOW, HENRY B.

Celerenterates from Labrador and Newfoundland, collected by Mr. Owen Bryant from July to October, 1908.

Proceedings of the United States National Museum, 1910, vol. 37, pp. 301-302, pls. 30-32.

McMURRICH, J. PLAYFAIR.

The Actinaria of the Siboga Expedition. Part I Ceriantaria.

Uitkomsten op Zool., Bot., Oceanogr. en tieol. Gebied verzameld in Nederland. Oost-Indië, 1899-1900 on board H. M. Siboga. Monogr. xva, pp. 1-48, with one plate and 14 text-figures; 4 to.

VERMES (WORMS).

ASHWORTH, JAMES HARTLEY.

The Annelids of the family Arenicolidae of North and South America, including an account of *Arenicola glacialis*, Murdoch.

Proceedings of the United States National Museum, 1910, vol. 39, pp. 1-32, text-figures 1-14.

Two species from Canada are recorded, viz., *Arenicola murina* (Linnaeus) from Rigolet, Labrador, Cape Breton, Nova Scotia and Halifax, Nova Scotia; and *A. elapari-dia*, Levinson from Vancouver island, B.C.

* Communicated by permission of the Director of the Geological Survey.

MOORE, J. PERCY.

- The Polychaetous Annelids dredged in 1908 by Mr. Owen Bryant off the coasts of Labrador, Newfoundland and Nova Scotia.
 Proceedings of the United States National Museum, 1910, vol. 37, pp. 133-146.

MOLLUSCA.

BAKER, F. C.

- Description of a new *Lymnaea*.
 The Nautilus, September, 1910, vol. xxiv, No. 5, pp. 58-60.
 The author describes a new variety, under the name *L. emarginata wisconsinensis*, and with it includes the *L. ampla* from Brome lake, Que., described by J. E. Whiteaves, in the eighth volume of the Canadian Naturalist and Geologist in 1863.

STAFFORD, J.

- The larva and spat of the Canadian oyster. II. The spat.
 The American Naturalist, June, 1910, vol. xlix, No. 522, pp. 313-366, with one plate of figures.

ARTHROPODA (ARTICULATES).

RICHARDSON, HARRULT.

- Isopods collected in the northwest Pacific by the U. S. Bureau of Fisheries Steamer "Albatross," in 1906.
 Proceedings of the United States National Museum, 1910, vol. 37, pp. 75-129.
 Among the species described or recorded is *Pentidotea wosnesenskii* (Brandt) from Union bay, Bayne sound, British Columbia.

SHARPE, RICHARD W.

- Notes on the marine Copepoda and Cladocera of Woods Hole and adjacent regions, including a synopsis of the genera of the Harpacticoida.
 Proceedings of the United States National Museum, 1910, vol. 38, pp. 405-436, text-figures 1-20.
 Some of the included species occur in Canadian Atlantic waters.

TUNICATA.

VAN NAME, WILLARD G.

- Compound Ascidians of the coast of New England and neighboring British Provinces.
 Proceedings of the Boston Society of Natural History, September, 1910, vol. 31, No. 11, pp. 339-424, pls. 31-39, and 25 text-figures.

VERTEBRATA

PISCES (FISHES)

BAIRD, FRANCIS N.

- On a new Labradorian species of Onchidiopsis, a genus of Mollusks new to eastern North America, with remarks on its relationships.
 Proceedings of the United States National Museum, 1910, vol. 38, pp. 169-181, pls. 21-22.
 The species *Onchidiopsis coris*, based on a single specimen from off Fish Island, outside Hebron harbour, is described.

EVERMAN, BARTON WARREN, and LATIMER, HOWAR BARKER

- The Fishes of the Lake of the Woods and connecting waters.
 Proceedings of the United States National Museum, 1910, vol. 39, pp. 121-136.

JORDAN, DAVID STARR, and THOMPSON, WILLIAM FRANCIS

- Description of a new species of deep-water Sculpin, *Teaglopius ontarioensis*, from Lake Ontario, with notes on related species.
 Proceedings of the United States National Museum, 1910, vol. 38, pp. 75-78, text-figures 1-3.
 The new species is founded on one specimen from off Toronto, Ontario.
 Note on the Gold-eye, *Amphiodon alosoides*, Ramesque, or *Ulatomastus chrysops* (Richardson).
Ibid., 1910, vol. 38, pp. 353-357, text-figures 1 and 2.
 Description based on specimens from Red river at Winnipeg, and from Indiana and Nebraska localities.

KENDALL, WILLIAM A. EVERSE

- Report on the fishes collected by Mr. Owen Bryant on a trip to Labrador in the summer of 1908.
 Proceedings of the United States National Museum, 1910, vol. 38, pp. 503-510, with plate 30.

LATIMER, HOWAR BARKER. See EVERMAN

McMURICH, J. PLAYFAIR

- The Life History of the Pacific Salmon.
 Transactions of the Canadian Institute, 1910, vol. ix, pp. 23-44, with three text-figures.

THOMPSON, WILLIAM FRANCIS. See JORDAN.

AMPHIBIA

PIERSOL, W. H.

- The Habits and Larval State of *Plethodon cinereus erythronotus*.
 Transactions of the Canadian Institute, 1910, vol. viii, pp. 169-192, with one plate of figures.

AVIS (Birds).

ALLAN, FRANCIS H.

Warbling song of the Hudsonian Chickadee.

The Auk, January, 1910, vol. xxvii, No. 1, p. 86.

AMERICAN MUSEUM JOURNAL, THE (EDITORIAL).

Stefansson-Anderson Arctic expedition

May, 1910, vol. x, No. 5, pp. 133-138.

Brief references are made to the birds of the district explored which included territory to the east and west of the Canadian-Alaskan boundary between Pt. Barrow and Cape Bathurst and south to the Arctic circle. The expense of this expedition was borne, in part, by the Geological Survey of Canada.

BENT, A. C. See TOWNSEND.

BISHOP, LOUIS B.

Two new sub-species of North American birds.

The Auk, January, 1910, vol. xxvii, No. 1, pp. 59-63.

The sub-species described as new are *Numenius americanus parvus* (Canadian curlew) and *Molothrus ater dwighti* (Northern cow-bird) both from Crane lake, Saskatchewan.

BROWN, W. J.

Nesting of the American Osprey.

The Ottawa Naturalist, November, 1910, vol. xxiv, No. 8, p. 115.

CHAPMAN, FRANK M.

Protective coloration in the habitat groups of birds.

The American Museum Journal, November, 1910, vol. x, No. 7, pp. 195-198.

Includes a note on the White-tailed Ptarmigan from the Canadian Rockies with a reproduction of a photograph of a portion of the "Arctic-Alpine group" showing the bird in summer plumage and natural surroundings.

CLARK, AUSTIN HOBART.

The birds collected and observed during the cruise of the United States Fisheries Steamer "Albatross" in the north Pacific ocean, and in the Bering, Okhotsk, Japan, and Eastern seas, from April to December, 1906.

Proceedings of the United States National Museum, 1910, vol. 38, pp. 25-71.

Many of the species listed occur on the Pacific coast of Canada.

COOKE, WELLS W.

Distribution of a Migration of North American Shore Birds.

U. S. Department of Agriculture, Bureau of Biological Survey, Bulletin No. 35, pp. 1-100, with four plates.

CUDDLE, NORMAN

Everyday Ornithology

The Ottawa Naturalist, February, 1910, vol. xxiii, No. 11, pp. 197-204

Interesting field notes on the birds of Aweme, Man., extending over a period of four years beginning with 1906

A colony of Cliff Swallow and others

Idem, November, 1910, vol. xxiv, No. 8, pp. 113-115

DROSSE, C. E.

Purple Gallinule, Sabine's Gull, and other rare birds in Quebec

The Auk, January, 1910, vol. xxvii, No. 1, p. 89

ERRICO, G.

A winter of rare birds at Ottawa, Ontario

The Auk, January, 1910, vol. xxvii, No. 1, pp. 53-55

A Parasitic Jaeger near Ottawa, Ontario

Idem, April, 1910, vol. xxvii, No. 2, p. 201

Stomach contents of some Canadian birds

The Ottawa Naturalist, April, 1910, vol. xxiv, No. 4, pp. 18-20

The Parasitic Jaeger near Ottawa

Idem, April, 1910, vol. xxvii, No. 4, p. 22

The birds of Ottawa.

Idem, December, 1910, vol. xxiv, No. 9, pp. 152-163.

This list, to be continued in a later number of the Naturalist, gives 56 species belonging to the orders Pygopodes (8), Longipennes (9), Steganopodes (3), Anseres (31) and Herodiones (5). Notes accompany the species named.

FERRY, JOHN F.

Birds observed in Saskatchewan during the summer of 1909.

The Auk, April, 1910, vol. xxvii, No. 2, pp. 185-204 (pls. x, xi and xii)

GRUSSELL, JOSEPH.

The Savannah Sparrow of the Great Basin

University of California publications in Zoology, February, 1910, vol. 5, No. 9, pp. 311-316

Contains critical notes on a selected specimen of the subspecies *Pas-serculus sandrichensis alaudinus*, Bonaparte from Forty-mile, Yukon, Canada.

GROU, HERBERT.

The Clarke Nutteracker in Manitoba.

The Ottawa Naturalist, December, 1910, vol. xxiv, No. 9, p. 168.

HENSINGER, W. F.

On some eggs supposed to be new to science.

The Wilson Bulletin, June, 1910, vol. xvii, No. 2, p. 119.

The author gives measurements of the eggs of Allen's Ptarmigan (*Lagopus lagopus alleni*) and of Welch's Ptarmigan (*Lagopus welchi*) from Newfoundland.

KAY, ALFRED.

Brünnich Murre, *Uria lomvia*.

The Ottawa Naturalist, May, 1910, vol. xxiv, No. 2, p. 43.

Note on the occurrence of this species in Ontario.

KLEN, REV. J. H.

Bird migration in northern British Columbia.

The Ottawa Naturalist, October, 1910, vol. xxiv, No. 7, pp. 116-117.

KLEGG, A. B.

Present status of the Prairie Warbler in Canada.

The Ontario Natural Science Bulletin, No. 6, 1910, p. 31.

LOCHHEAD, W.

The Passenger Pigeon.

The Ottawa Naturalist, March, 1910, vol. xxiii, No. 12, pp. 224-225.

MAGGON, JAMES, M.

A Gannet near Ottawa.

The Ottawa Naturalist, January, 1910, vol. xxiii, No. 10, p. 192.

First record of the occurrence of the Gannet or Solan Goose (*Sula bassana*, Boie) near Ottawa.

MUNRO, J. A.

Birds observed at Cobocook, Ont.

The Ottawa Naturalist, January, 1910, vol. xxiii, No. 10, pp. 194-196.

Short-eared Owl.

Idem, May, 1910, vol. xxiv, No. 2, p. 42.

This note gives dates during September and October, 1909, when this owl was seen at the eastern Sandbar, Toronto.

NASH, C. W.

The Black Rail in Ontario.

The Ottawa Naturalist, April, 1910, vol. xxiv, No. 1, p. 20.

PATER, R. G.

Birds observed at Sherbrooke, Que.—Spring migration, 1909.

The Ottawa Naturalist, June, 1910, vol. xxiv, No. 3, pp. 55-57.

Gives a list of 75 species.

SANDERS, W. E.

Pinnated Grouse in southern Ontario.

The Auk, January, 1910, vol. xxvii, No. 1, p. 79.

The Grasshopper Sparrow in Ontario.

Idem, January, 1910, vol. xxvii, No. 1, p. 84.

Birds of central Alberta.

Idem, January, 1910, vol. xxvii, No. 1, p. 89.

Acadian Flycatcher in Ontario.

Idem, April, 1910, vol. xxvii, No. 2, p. 209.

- Another tagged bird heard from.
Idem, April, 1910, vol. xxvii, No. 2, p. 224.
A Black Duck tagged at Kingsville, Ontario, was killed a month later at Anderson, South Carolina, U. S. A.
- Bonaparte's Gull.
The Ottawa Naturalist, February, 1910, vol. xxiii, No. 44, p. 214
- Birds of Alberta.
Idem, April, 1910, vol. xxiv, No. 4, p. 21
- Winter bird! at Point Pelee, Ont.
Idem, May, 1910, vol. xxiv, No. 2, pp. 35-36
- Phalaropes in western Ontario.
Idem, May, 1910, vol. xxiv, No. 2, p. 43.
- The Black Rail in Ontario.
Idem, May, 1910, vol. xxiv, No. 2, p. 44
- SHANKLAND, FRANK N.
Birds seen on the Otomabee river, Canada, in August
The Wilson Bulletin, March, 1910, vol. xxii, No. 1, pp. 5-24.
- STANSBELL, SIDNEY S. S.
Birds of central Alberta.
The Auk, April 1910, vol. xxvii, No. 2, pp. 214-215
- FERRILL, L. McL.
Notes on winter birds in Hocaelaga and Compton counties
The Ottawa Naturalist, May, 1910, vol. xxiv, No. 2, pp. 38-40
Notes on the White-throated sparrow.
Idem, November, 1910, vol. xxiv, No. 8, pp. 435-438.
- TOWNSEND, CHARLES W., and BENT, A. C.
Additional notes on the birds of Labrador.
The Auk, January, 1910, vol. xxxii, No. 1, pp. 1-48, with three plates.
Three species, *Agelaius meloda* (Piping plover), *Cyanocitta cristata* (Blue jay) and *Mniotilta varia* (Black and white warbler) are included, as new to Labrador, in an annotated list of 93 species.
- TROFFER, SPENCER.
An inquiry into the history of the current English names of North American land birds.
Annual Report of the Smithsonian Institution, 1909 (1910), pp. 505-549.
- VINCABLES, E. P.
A few Winter Bird Notes.
The Ottawa Naturalist, April, 1910, vol. xxiv, No. 4, p. 20
Notes on birds seen at Vernon, B.C.
- WOOD, N. A.
Bird migration at Point Pelee, Ontario, in the fall of 1909.
The Wilson Bulletin, June, 1910, vol. xxii, No. 2, pp. 63-78.

MAMMALS.

ALLEN, J. A.

The Black Bear of Labrador.

Bulletin of the American Museum of Natural History, vol. xxviii, 1910, pp. 1-6.

Mammals from the Athabasca-Mackenzie region of Canada.

Idem vol. xxviii, 1910, pp. 7-17.

BENSLEY, B. A.

Practical Anatomy of the Rabbit. An elementary laboratory text-book in mammalian anatomy, pp. 1-203, with eight plates and 56 text-figures, 1910.

Part I. A general consideration of the structure of the rabbit.

Part II. Osteology of the rabbit.

Part III. Dissection of the rabbit.

The University Press, Toronto, and P. Blackiston's Son and Co., Philadelphia.

BROOKS, ALLAN.

The "Wapiti" of the Cree.

Forest and Stream, January, 1910, vol. lxxiv, No. 3, p. 92.

In "The Mammalia of Canada" published by the Canadian Institute in 1888, Mr. J. B. Tyrrell pointed out that "Wapatik" the Cree name for the Mountain Goat, is misapplied when used to denote the American Elk (*Cervus canadensis*, Erxl.).

GOLDMAN, EDWARD A.

Revision of the Wood Rats of the genus *Neotoma*.

U. S. Department of Agriculture, Bureau of Biological Survey, North American Fauna, No. 31, pp. 1-107, pls. i-viii, with text-figures (ouaps shewing distribution) 1-14.

The genus is well represented in western Canada.

GRANT, MADISON.

Condition of wild life in Alaska.

Annual Report of the Smithsonian Institution, 1909 (1910), pp. 521-529.

This article has reference to the mammals of western Canada as well as to those of Alaska.

MACKENZIE, J. J.

Human Evolution and Human Disease.

Transactions of the Canadian Institute, 1910, vol. viii, pp. 535-547.

MOORE, WM. H.

A Shrew new to New Brunswick.

The Ottawa Naturalist, March, 1910, vol. xxiii, No. 12, pp. 217-218.

The species has been identified as *Neosorex albibarbis* (Cope).

Comments are made on the common mole, and other shrews, taken at the same locality, viz., Scotch lake.

PERCIVAL, S. E.

A weasel's home.

The Ottawa Naturalist, June, 1910, vol. xxiv, No. 3, p. 59.

SAUNDERS, W. E.

A rare Weasel at Ottawa.

The Ottawa Naturalist, February, 1910, vol. xxiii, No. 11, p. 212.

Refers to the capture of Bonaparte's Weasel (*Putorius cupanini*).

The Smoky Shrew, *Sorex fumens*.

Idem, March, 1910, vol. xxiii, No. 12, p. 228.

Notes the occurrence of this species in Ontario.

MISCELLANEOUS.

HALKETT, ANDREW.

Natural History Report.

33rd Annual Report of the Department of Marine and Fisheries, 1909-10 (1910), Appendix No. 18, pp. 368-397.

HALPENNY, J.

The Relationship between the Thyroid and Parathyroids.

Surgery, Gynecology and Obstetrics, May, 1910, pp. 176-181.

MCMURRICH, J. PLAYFAIR.

The Legend of the Resurrection Bone.

Transactions of the Canadian Institute, 1910, vol. ix, pp. 45-51.

The genus *Arachnaetis*.

Journ. Experimental Zool., vol. ix, pp. 159-168, with 5 text-figures.

THOMPSON, FLORENCE D.

The Thyroid and Parathyroid Glands throughout Vertebrates, with observations on some other closely related structures.

Philosophical Transactions of the Royal Society, London, 1910. Series B, vol. 201, pp. 91-132, pls. 10-11.

TREDERNE, R. C.

Animal instinct.

The Ottawa Naturalist, October, 1910, vol. xxiv, No. 7, pp. 121-126.

VINCENT, SWALE.

The Chromophil Tissues and the Adrenal Medulla.

Proceedings of the Royal Society, London, 1910. Series B, vol. 82, pp. 502-515, plate 13.

Innere Sekretion und Drüsen ohne Ausführungsgang. Teil I.

Ergeb. der Physiol., 1910, ix, Jahrgang, s. 451-586.

