

Mr. Lee,

ANNUAL REPORT

OF THE

INSPECTOR

OF THE

Public Schools

OF THE

CITY OF TORONTO,

FOR THE

YEAR ENDING DECEMBER 31, 1877

Toronto:

T. HILL & SON, CAXTON PRESS, COR. KING AND JARVIS STS.

1878.

A M



CI

YEAR

T. HILL &



ANNUAL REPORT

OF THE

INSPECTOR

OF THE



OF THE

CITY OF TORONTO,

FOR THE

YEAR ENDING DECEMBER 31, 1877.

---

Toronto:

T. HILL & SON, CAXTON PRESS, COR. KING AND JARVIS STS.

1878.

List of  
Organ  
Inspe  
Atter  
Abse  
Later  
Certi  
Teach  
Schoo  
Schoo  
The l  
Teach  
Profe  
Writi  
Indus  
Drill,  
Exam  
High  
Schol  
Jesse  
Gover  
Progr  
Table  
"  
"  
"  
"  
"  
"  
"  
"  
"  
"  
Repor  
Exam  
Time

Secret

# INDEX.

—:§:—

|   | Page. |
|---|-------|
| List of Trustees, .....                               | 5     |
| Organization of the Board, .....                      | 6     |
| Inspector's Annual Report, .....                      | 9     |
| Attendance, .....                                     | 9     |
| Absenteeism, .....                                    | 10    |
| Lateness, .....                                       | 11    |
| Certificates of Honor, .....                          | 11    |
| Teachers, .....                                       | 12    |
| School Accommodation, .....                           | 12    |
| School Furniture and Apparatus, .....                 | 12    |
| The New System of Grading, .....                      | 13    |
| Teachers' Association, .....                          | 14    |
| Professional and Reference Library, .....             | 17    |
| Writing, .....  | 18    |
| Industrial Training for Girls, .....                  | 19    |
| Drill, .....  | 21    |
| Examinations, .....                                   | 22    |
| High and Public School Examinations, .....            | 24    |
| Scholarship Pupils at the Collegiate Institute, ..... | 25    |
| Jesse Ketchum Prizes, .....                           | 27    |
| Government Grant, .....                               | 27    |
| Progress of the Public Schools, .....                 | 28    |
| Table A, Registered Numbers, .....                    | 31    |
| " B, Average Attendance, .....                        | 32    |
| " C, Absenteeism, .....                               | 33    |
| " D, Lateness, .....                                  | 34    |
| " E, No. of Pupils to each Teacher, .....             | 35    |
| " F, Length of Pupils' Attendance, .....              | 35    |
| " G, Numbers studying different branches, .....       | 36    |
| " H, Detailed Comparative Statement, .....            | 37    |
| " I, Statistics relating to Teachers, .....           | 38    |
| Report of Combined Examination, .....                 | 47    |
| Examination Papers, .....                             | 65    |
| Time Table, .....                                     | 75    |
| <b>APPENDIX.</b>                                      |       |
| Secretary's Financial Statement, .....                | 3     |

(4)

(5)

(6)

(7)

(8)

(9)

# Public School Board.

1877.

## Ward of St. Lawrence.

|                           | Term expires. |
|---------------------------|---------------|
| THOMAS DAVISON, Esq. .... | Dec. 1877.    |
| JAMES BURNS, Esq. ....    | Dec. 1878.    |

## Ward of St. David.

|                          |            |
|--------------------------|------------|
| E. P. RODEN, Esq. ....   | Dec. 1877. |
| EDWARD GALLEY, Esq. .... | Dec. 1878. |

## Ward of St. Thomas.

|                                 |            |
|---------------------------------|------------|
| P. G. DeGRASSI, Esq., M.D. .... | Dec. 1877. |
| J. A. MILLS, Esq. ....          | Dec. 1878. |

## Ward of St. James.

|                          |            |
|--------------------------|------------|
| WALTER S. LEE, Esq. .... | Dec. 1877. |
| JAMES BAIN, Esq. ....    | Dec. 1878. |

## Ward of St. John.

|                          |            |
|--------------------------|------------|
| JOHN KENT, Esq. ....     | Dec. 1877. |
| E. P. PEARSON, Esq. .... | Dec. 1878. |

## Ward of St. Andrew.

|                                      |            |
|--------------------------------------|------------|
| JAMES SLOAN, Esq. ....               | Dec. 1877. |
| GEORGE WRIGHT, Esq., M.A., M.B. .... | Dec. 1878. |

## Ward of St. George.

|                             |            |
|-----------------------------|------------|
| W. CAMPBELL, Esq. ....      | Dec. 1877. |
| GEORGE McMURRICH, Esq. .... | Dec. 1878. |

## Ward of St. Patrick.

|                              |            |
|------------------------------|------------|
| W. W. OGDEN, Esq., M.D. .... | Dec. 1877. |
| W. MARA, Esq. ....           | Dec. 1878. |

## Ward of St. Stephen.

|                            |            |
|----------------------------|------------|
| JOHN WINCHESTER, Esq. .... | Dec. 1877. |
| FOLLIS JOHNSTON, Esq. .... | Dec. 1878. |

# Organization of the Board.

---

## Chairman.

W. W. OGDEN, Esq., M.D.

---

## Standing Committees.

### I.—On Finance, Assessment and Salaries.

MESSEES. DAVISON, LEE AND McMURRICH.

### II.—On School Management.

DR. WRIGHT, DR. DEGRASSI, AND MESSEES. CAMPBELL,  
GALLEY AND WINCHESTER.

### III.—On Sites and Buildings.

MESSEES. BURNS, KENT, RODEN AND SLOAN.

### IV.—On Supplies.

MESSEES. JOHNSTON, LEE AND BAIN.

### V.—On Industrial Schools.

MESSEES. PEARSON, MARA AND MILLS.

---

## Officers of the Board.

SCHOOL INSPECTOR, - JAMES HUGHES, Esq.  
SECRETARY, - - - W. C. WILKINSON, Esq.  
SOLICITOR, - - - W. B. McMURRICH, Esq., M.A.  
TRUANT OFFICER, - JOHN T. THOMPSON, Esq.  
AUDITOR, - - - WILLIAM ANDERSON, Esq.



Inspector's Annual Report.

T

G

E

S

g

a

t

I

# Inspector's Annual Report.

To the Board of Public School Trustees of the City of  
Toronto:

GENTLEMEN,

In accordance with a resolution of your honourable Board, I respectfully submit the Nineteenth Annual Report of the Schools under your charge.

Appended to the Report will be found Statistical Tables which give in detail all important particulars relating to teachers, pupils, attendance, absenteeism, tardiness, studies pursued, cost of maintenance, &c.

## ATTENDANCE.

The total number of pupils registered during the year was 11,010.

The average daily attendance was 6,860. Last year it was 5,976.

|      |        |          |        |         |      |     |       |       |
|------|--------|----------|--------|---------|------|-----|-------|-------|
| 596  | pupils | attended | school | less    | than | 20  | days. |       |
| 1171 | "      | "        |        | between | 20   | and | 50    | days. |
| 2487 | "      | "        |        | "       | 50   | "   | 100   | "     |
| 1979 | "      | "        |        | "       | 100  | "   | 150   | "     |
| 3787 | "      | "        |        | "       | 150  | "   | 200   | "     |
| 990  | "      | "        |        | "       | 200  | "   | 203   | "     |

The number who attended school for over 100 days is 6756. This number would have been larger but for the fact that three schools; Markham Street, the Boys' Home and the Girls' Home, were only opened four months before the close of the year.

To show that the Attendance has been much improved during the year, it is only necessary to state that the Average Daily Attendance increased from 5,976 in 1876, to 6,860 in 1877.

The most correct idea of the relation of the Average to the Registered Attendance is obtained by comparing the average of Monthly Averages with the average of Monthly Registered Numbers.

The average of Monthly Registered Numbers was 7606. This shows an increase compared with last year of 694. (See Table A.)

The average of Monthly Average Numbers was 6,822. This shows an increase of 903 when compared with the corresponding number of last year. (See Table B.)

The average of Monthly Averages was 89.7 per cent. of the average of Monthly Registered Numbers. It was 86.3 last year, 83.4 in 1875, and 80.8 in 1874.

The best average for any month of the year was 93.8, the average for December.

The worst average was 86.3, the average for January.

#### ABSENTEEISM.

Steady and decided progress continues to be made in checking this greatest of evils in our schools. The number of days lost by absence in 1877 was 52,889 less than in 1876, and 85,879 less than in 1875. These numbers do not, however, show the actual improvement made, as the number of pupils in attendance in 1877 was much larger than in 1876 or 1875, and consequently the number of absentees should be proportionately greater. The most correct idea of the improvement made can be obtained by comparing

the number of days lost each year by each pupil, taking the average attendance as the basis of calculation. The numbers of days thus lost were as follows:—

|           |          |
|-----------|----------|
| 1874..... | 57 days. |
| 1875..... | 40 days. |
| 1876..... | 31 days. |
| 1877..... | 17 days. |

It will thus be seen that in one year the number of days lost by each pupil in actual attendance has been reduced nearly one-half. Notwithstanding this encouraging change, however, irregularity of attendance is still one of the greatest obstacles in the way of the general advancement of the pupils of our schools, and it will require persistent and united effort on the part of all parties concerned to reduce it to reasonable limits. (See Table C.)

#### LATENESS.

The improvement in the *punctuality* was even greater than in the *regularity* of attendance. Although the daily attendance was largely in excess of the previous year, the lateness was reduced more than 50 per cent. There were 31,476 cases of lateness in 1876, and only 15,272 in 1877. This is less than one-fifth of what it was in 1874. (See Table D.)

#### CERTIFICATES OF HONOR.

The improvement made in Regularity, Punctuality, and Good Conduct, was shown clearly by the largely increased number of Certificates of Honor received by the pupils. The number granted in 1876 was 2,265; this was increased in 1877 to 4,186.

The Board has decided that these Certificates shall be given only once a year instead of at the close of each Session. This will render them much more valuable than they have been heretofore.



## TEACHERS.

There were 128 teachers in the employ of the Board at the close of the year, exclusive of special teachers in Music and Drawing. There are 22 male and 106 female teachers employed. They hold certificates as follows :

|                               |    |
|-------------------------------|----|
| First Class Provincial.....   | 47 |
| First Class County Board..... | 18 |
| Second Class Provincial.....  | 63 |

## SCHOOL ACCOMMODATION.

Thirty-four teachers were added to the Staff during the year. This reduces the number in charge of each teacher nearly to the legal limit, except in the lowest four grades. In most of these, and especially in the 10th Divisions, the numbers are still far greater than they should be. Temporary accommodation for the pupils of the lowest grades has been provided in certain parts of the City by the renting of halls. This is not a satisfactory method of settling the difficulty however. The halls are not well seated, or lighted or ventilated on proper principles; and the rent paid, would pay the interest on a capital account which would provide more and better accommodation. It is not necessary to erect large schools to meet the present requirements. Several Primary Schools are urgently needed, however. Owing to the rapidly increasing number of advanced pupils in our schools, Wellesley School should as soon as possible be set apart exclusively for the higher grades, as the Dufferin and Ryerson Schools have been. If the Winchester and Niagara Street Schools were doubled in size, they would provide accommodation for the 4th, 5th and 6th Divisions, as well as the large number of junior pupils applying for admission to them.

## FURNITURE AND APPARATUS.

The furniture for all classes except the lowest is quite satisfactory. For the 10th Divisions I would strongly recommend



Cornell Settees (St. Louis Primary), manufactured by R. Hay & Co. They are quite as good for pupils who do not write in copy books as desks, and cost only about one-half as much.

Every school in the city requires some apparatus. The articles most urgently needed are globes, calculators, and map-stands.

#### THE NEW SYSTEM OF GRADING.

The system of classifying the pupils, introduced at the commencement of the year, on the opening of the three new Advanced Schools, has been productive of most excellent results in every way. The attendance is more regular; the difficulties connected with discipline have decreased; the progress made by the pupils has been greater, and the labour of the teachers much less than under the old system. Perhaps the most encouraging results which have followed the adoption of the new system, are the increased average age of the pupils in the senior grades, and the very large increase in the number attending the advanced classes. There were 1921 pupils in the 4th and 5th Book Classes in 1877, and only 1397 in 1876. The older pupils find it to their advantage to remain longer in our schools than formerly, because the teachers of the higher divisions are allowed to devote their whole time to the subjects which should be taught to pupils of the higher grades. This is a very desirable change. The citizens of Toronto have a right to expect our Public Schools to afford opportunities to their children for acquiring a first-class English education. It should not be necessary for a parent to be compelled to pay taxes for the support of Public Schools, and, at the same time, pay fees for the education of his children in the very branches of instruction which the Public Schools are expected to teach. I regard the position taken by the Toronto Public School Board as the right one, viz.: To keep the Public and High Schools separate and distinct from each other, and to provide for the thorough teaching of the higher classes in the Public Schools. Mistakes are frequently made in

comparing the High School system of Toronto with that of other cities, where there are no Public School classes above those reading in the Fourth Book; and some conclude that, because there are not so many candidates for admission to the Collegiate Institute in Toronto as in some other places, the general standard of public education is not so high in Toronto as in those cities where more are crowded into the High Schools. This is an error. The fact is that if all the pupils in Toronto Public Schools who could pass the Entrance Examination to the High School were to be regarded as High School Pupils, Toronto would have nearly as many High School Pupils as all the other cities of Ontario taken together.

I confidently expect, that with the present system of grading, our Public School Scholarship Pupils will soon be able to pass the Intermediate Examination on entering the Collegiate Institute.

#### TEACHERS' ASSOCIATION.

The Minister of Education, in accordance with powers given him by the School Act of 1877, issued the following Regulations for the organization of a Teachers' Association in each Inspectoral District in the Province :

##### REGULATIONS RESPECTING TEACHERS' ASSOCIATIONS.

*Approved by His Honour the Lieutenant Governor in Council, 22nd June, 1877.*

The following Regulations shall apply to, and govern Teachers' Associations :

1. In each County or Inspectoral Division a Teachers' Association shall be formed, the object of which shall be to read papers and discuss matters having a practical bearing on the daily work of the school room.

2. *Officers.*—The officers of the Association shall be a President, Vice-President, and Secretary-Treasurer. There shall also be a

Management Committee of five. The officers of the Association and the Management Committee shall be elected annually.

3. *Meetings.*—The Association shall meet once during each half year, and shall continue in session two days, which shall be deemed as visiting days. The time and place of the first meeting shall be fixed by the Inspector. Subsequent meetings shall be held on such days and at such places as the Association may determine.

4. *Sessions.*—The Sessions on the first day shall be from 9 a.m. to 12 m., and from 2 p.m. to 5 p.m. On the second day from 9 a.m. to 12 m., and from 2 p.m. to 4 p.m.

5. *Programme.*—The subjects for discussion and order of business shall be determined by the Management Committee and officers of the Association; and all Teachers in the County or Inspectoral Division shall be notified of the subjects at least one month before each meeting. The work of the Association shall be as practical as possible; and at every meeting, illustrative teaching of classes should form a prominent part of the proceedings. All questions and discussions foreign to the Teachers' work should be avoided. The programme for the first meeting of the Association shall be drawn up by the Inspector, and by such Teachers as he may call to his assistance, of which notice shall be given as above.

6. It is recommended that a public lecture be delivered, either by the Inspector or some other suitable person, on the evening of first day's meeting.

7. In case one or more persons should be appointed by the Department, for the purposes of more fully enabling the Associations to accomplish the purposes for which they are established, such persons shall report upon the efficiency of each Association, with the view of its being entitled to receive from the Department and County Corporations, the appropriations authorized by the Legislature, and, in the meantime, such report shall be made by the Inspector.

8. In case the Inspector, from time to time, reports to the Department the continued efficiency of the Association, the Association will then, and not otherwise, be entitled to receive the said Legislative and County appropriations.

(Signed)

ADAM CROOKS,

*Minister of Education.*

EDUCATION DEPARTMENT, ONTARIO,

Toronto, 11th June, 1877.

In accordance with these Regulations, an Association composed of the Teachers of Toronto and vicinity was organized, and its first meeting was held by the kind permission of the Minister of Education in the Public Hall of the Normal School, on Friday and Saturday, the 14th and 15th of December.

The following is the programme of work done at this meeting :

FRIDAY, DECEMBER 14.

- 9-10. Business Meeting—Adoption of a Constitution, &c.  
 10-12. How to teach Arithmetic till the end of Division—  
 MR. LEVI CLARK.  
 2-3.30. How to teach Geography to Senior Classes—MISS M.  
 J. KEOWN.  
 How to teach Geography to Junior Classes—MISS B.  
 SIMS.  
 3.30-5. How to teach Writing—MR. A. F. McDONALD.

SATURDAY, DECEMBER 15.

- 9-10.30. How to teach Reading to classes below the 4th Book  
 —MR. RICHARD LEWIS.  
 10.30-12. Difficulties in connection with School Discipline—MR.  
 S. McALLISTER.  
 2-4. Best method of Parsing and Analyzing—I. J. BIRCH-  
 ARD.

THE PRESIDENT'S INAUGURAL ADDRESS was delivered on Friday evening, at 8 o'clock. Subject: "The Educational Outlook."

George Wright, Esq., M.A., M.D., Chairman of the Committee on School Management, delivered an address before the Association on Saturday evening, at 8 o'clock.

The exercises throughout were of the most practical character; the teachers, both male and female, took an active part in the discussions, and many very valuable suggestions were given. These meetings cannot fail to be of great benefit to the teachers. Several other meetings of the teachers, called by myself to consider various matters relating to the general management of the schools, were held during the year.

The Officers of the Association for the year 1878, are:

PRESIDENT, Mr. James Hughes; VICE-PRESIDENT, Mr. R. W. Doan; SECRETARY-TREASURER, Mr. R. McCausland; COMMITTEE OF MANAGEMENT, Miss Buik, Miss Fraser, Mr. McAllister, Mr. McDonald, and Mr. A. Hendry.

#### PROFESSIONAL AND REFERENCE LIBRARY.

The School Board and the Teachers of the Public Schools of the City are to be congratulated on the fact, that a Professional and Reference Library has been established by the Board. Although it is small, it is select, and, it is to be hoped, that it is but the beginning of what may yet grow to much larger proportions. It is impossible to calculate the benefit to be derived from the reading of good works on Education by teachers. The teacher who is too young, or too old, or too indifferent, to be interested in studying standard educational literature, and keeping himself thoroughly acquainted with the most advanced ideas in connection with his profession, is not worthy of the honourable and responsible position he occupies.



## WRITING.

This subject is one of the greatest importance to the majority of the pupils attending our schools. I found, on my appointment, no less than thirteen varieties of writing books, some with head lines and some without, in use in our schools. Nine distinct kinds were found in one room. There was no attempt to teach writing to the whole class, in most cases; each pupil was a class by himself. I immediately called a meeting of the Head Masters, and submitted to them all the systems of writing available in Toronto. The result was that nine books of the Paysón, Dunton and Scribner Series were selected, and approved by the Committee on School Management. The wholesale publishers in Toronto imported their Copy-books from Glasgow, and for a time they were satisfactory, so far as quality of paper and engraving were concerned. They soon began to deteriorate, however, and for the last year have not been at all creditable to their publishers, or satisfactory to our teachers. I hope, therefore, that the Board will consider the adoption of a series of Copy-books of a better character than those now in use in our schools.

I am glad to be able to report that much progress has been made in the method of teaching writing during the past year. The subject has been twice discussed by experts before the teachers, and a uniform method adopted, so that when a pupil is promoted from one school to another, he is not compelled to alter his method of sitting, holding the pen, &c. Every pupil in a class is also required to write the same copy on four, or at least three days of each week.

The teacher is therefore able, in a very short time, to explain to *the whole class* the chief points to be attended to in the lesson for the day. The explanation is thus given to all in the same time that would be required for each one, if all wrote separate copies; thus a great saving is effected in time, and a great deal more teaching given to each individual, than could possibly be done otherwise.

There is one apparent objection to the method, which at first



sight, and to those who have not thought carefully on the subject, seems to have some force. As every pupil is *not present every day*, it follows, that, when the absent pupils return, they will have to leave unwritten, the copies written by the class, while they were absent. It would not do for them to write these at home, because they would almost invariably write in a hasty and careless manner, which would produce bad effects. Here, therefore, comes the difficulty.

When the *class* has reached the last copy in the book, and is ready for new books, there may be a dozen or more pupils who have some pages unfinished, and their parents raise an outcry against getting new books. They do this under the impression that the old books are no longer of any use. I fear that, in some cases, even the teachers have helped to convey this impression. This is entirely wrong, however. Every pupil should have two writing books at the same time, the *regular class book*, and a book for writing in every fourth or fifth day, while those who have back copies unwritten in the *regular class book* are completing them. This *extra* book may be either the unfinished *old* book or a blank book in which the pupil may write something written on the blackboard by the teacher. In this way every pupil will be able to utilize the unfinished pages of his old book, except those who are absent about one-half or more of the school time; and it would be a serious mistake to injure those who are regular, for the sake of those who are irregular. I am quite convinced that it is only necessary for parents to understand the method, in order to secure their full approval and co-operation in teaching writing as we do other subjects, by the *class*, instead of the *individual* method.

#### INDUSTRIAL TRAINING FOR GIRLS.

In my report for 1874, I called attention to the fact, that the time set apart for "needle work" in our female departments was, in my opinion, spent very unprofitably; no system seemed to be adopted

at all. There was no class teaching; Tatting, Crochet-work, Bead-work, Wool-work, Knitting, Sewing, Straw-work, &c., &c., by the pupils of the same division, at the same time, and the teacher, in many cases, took no part in explaining how to do any of the work whatever. I regret to say that, in the multitude of other matters with which the Board has had to deal, this has been overlooked. I therefore again call attention to it, hoping that the work may be made more systematic and practical than heretofore. There is no reason why every pupil in a class should not be engaged in doing exactly similar work, at the same time.

Neither is there any reason why a teacher should not *explain to every girl in her class* how to sew, or hem, or tuck, or knit, or darn, or do any similar work, at the same time; just as she shows how to work a problem or to parse a word at the same time. The work to be done can be arranged to suit the capabilities of the children in the different divisions, just as is done with other subjects. There is an official programme, laid down by the Education Department for the Schools of Ontario, in needlework. It is exactly similar to the programme of the Public Schools in London, England. It is as follows:

*First Class.* Threading Needles. Hemming; for instance, Strips of Calico, or a Plain Pocket Handkerchief. Knitting—a Plain Strip.

*Second Class.* Hemming, Seaming or Sewing, Felling, Fixing a Hem—*e. g.* Child's Pinafore. Knitting—a Ribbed Muffatte.

*Third Class.* Hemming, Seaming, Felling, Stitching, Sewing on Strings—*e. g.* a Pillow Case. Knitting—a Child's Plain Sock.

*Fourth Class.* Button-holing, Sewing on Buttons, Stroking, Setting in Gathers, Marking—*e. g.* a Plain Day or Night Shirt. Plain Darning. Knitting—a Ribbed Stocking.

*Fifth Class.* Subject continued.

*Sixth Class.* Subject continued. Cutting and Fitting Plain Garments.

It will be seen at a glance, that this is a practical programme, and one which the regular teachers could carry out properly in all the lower classes. In the higher divisions it would be better to have cutting out and fitting taught by a qualified dressmaker. The expense would be small, and the benefit to all classes of the community incalculable. I do not believe that any other subject taught to girls can be productive of so much good to so great a number as needle-work and fitting garments, if it is thoroughly taught.

In England, before any grant is made to an Elementary School, "the Educational Department must be satisfied that the girls are taught plain needle-work and cutting out, as a part of the ordinary course of instruction." No fancy work is allowed in these schools, simply knitting, sewing, mending, darning, cutting out and fitting. This remark applies to Ontario also.

In some parts of England, the School Board purchase cloth at wholesale prices, and supply it to parents at the same rate. If a girl in the lower classes needs an apron, her parents send an order accompanied by the necessary money to her teacher. The teacher purchases the cloth from the head mistress who has charge of it; the little girl is measured and fitted by some of the pupils in the higher divisions under the supervision of the needle-work teacher, and then she hems and sews her own apron under the guidance of her own teacher. In other places, wholesale clothing houses make arrangements with the schools to have certain kinds of garments made by the school girls.

#### DRILL.

During the past year this subject has been introduced more systematically in the higher classes of boys. Captain Thompson, Truant Officer, gives valuable assistance in drilling those classes of senior boys, which are taught by female teachers. The programme followed is that prescribed for the Province by the Education De-

partment. I hope the pupils may soon be sufficiently drilled to justify the Board in holding an Annual Review, as is done in London, by Sir Charles Read.

### EXAMINATIONS.

Three *written* Examinations were held during the year; the Combined Examination and two Promotion Examinations. The Examiners for the Combined Examination were Rev. J. M. King, M.A., Rev. I. Tovell, A. McMurchy, Esq., M.A., and John Paterson, Esq., M.A. The lists of Scholarships and Prizes awarded will be found in the Report of the Examiners. The comparative standing of the different schools in the various departments of study, will be found below by comparing the marks obtained at the Combined Examinations.

The following tables give the standing of the various divisions at the Combined Examination.

#### FIRST DIVISIONS.

*Twelve Pupils from each Division.*

| SCHOOLS AND DIVISIONS. | Mathe-<br>mation. | Classics &<br>Composition. | History and<br>Geography. | Reading &<br>Spelling. | Writing &<br>Book-keeping. | TOTAL. |
|------------------------|-------------------|----------------------------|---------------------------|------------------------|----------------------------|--------|
| Marks possible.....    | 3300              | 1800                       | 2400                      | 1920                   | 1320                       | 10,740 |
| Dufferin, Boys.....    | 2307              | 1506                       | 1878                      | 1403                   | 965                        | 8,016  |
| Wellesley, Girls.....  | 2276              | 1487                       | 1689                      | 1448                   | 810                        | 7,695  |
| Ryerson, ".....        | 2008              | 1279                       | 1967                      | 1532                   | 761                        | 7,453  |
| Dufferin, ".....       | 1936              | 1418                       | 1730                      | 1421                   | 904                        | 7,403  |
| Ryerson, Boys.....     | 2025              | 1294                       | 1786                      | 1328                   | 789                        | 7,222  |
| Wellesley, ".....      | 1986              | 1303                       | 1466                      | 1243                   | 696                        | 6,694  |

## SECOND DIVISIONS.

*Ten Pupils from each Division.*

| SCHOOLS AND DIVISIONS.     | Mathematics. | Grammar & Composition. | History and Geography. | Reading & Spelling & Derivation. | Writing. | TOTAL. |
|----------------------------|--------------|------------------------|------------------------|----------------------------------|----------|--------|
| Marks possible . . . . .   | 2250         | 1500                   | 2000                   | 1600                             | 600      | 7,950  |
| Wellesley, Girls . . . . . | 1278         | 1020                   | 1466                   | 945                              | 479      | 5,188  |
| Dufferin, " . . . . .      | 1196         | 956                    | 1135                   | 991                              | 435      | 4,710  |
| Ryerson, " . . . . .       | 1194         | 684                    | 1016                   | 931                              | 468      | 4,294  |
| " Boys . . . . .           | 917          | 572                    | 1176                   | 745                              | 444      | 3,844  |
| Dufferin " . . . . .       | 641          | 438                    | 878                    | 809                              | 471      | 3,237  |
| Wellesley, " . . . . .     | 621          | 294                    | 1086                   | 687                              | 429      | 3,057  |

## THIRD DIVISIONS.

*Ten Pupils from each Division.*

| SCHOOLS AND DIVISIONS.    | Arithmetic and Mensurati <sup>n</sup> . | Grammar & Composition. | History and Geography. | Reading & Spelling. | Writing. | TOTAL. |
|---------------------------|---|------------------------|------------------------|---------------------|----------|--------|
| Marks possible . . . . .  | 1500                                    | 1250                   | 1500                   | 1350                | 600      | 6,200  |
| Ryerson, Girls . . . . .  | 1006                                    | 1080                   | 1185                   | 1196                | 438      | 4,885  |
| Dufferin, Boys . . . . .  | 1005                                    | 968                    | 862                    | 1021                | 264      | 4,110  |
| Ryerson, " . . . . .      | 619                                     | 750                    | 1067                   | 1064                | 319      | 3,829  |
| Dufferin, Girls . . . . . | 745                                     | 752                    | 688                    | 974                 | 120      | 3,279  |

## FOURTH DIVISIONS.

*Five Pupils from each Division.*

| SCHOOLS AND DIVISIONS.          | Arithmetic | Grammar. | History and Geography. | Reading & Spelling. | Writing | TOTAL. |
|---------------------------------|------------|----------|------------------------|---------------------|---------|--------|
| Marks possible . . . . .        | 750        | 625      | 750                    | 675                 | 300     | 3,100  |
| Wellesley, Girls . . . . .      | 588        | 490      | 652                    | 441                 | 213     | 2,384  |
| John Street, " . . . . .        | 519        | 468      | 560                    | 523                 | 191     | 2,261  |
| Ryerson, " . . . . .            | 552        | 401      | 537                    | 468                 | 189     | 2,147  |
| " Boys . . . . .                | 491        | 392      | 502                    | 458                 | 196     | 2,039  |
| Dufferin, " . . . . .           | 475        | 475      | 510                    | 368                 | 165     | 2,013  |
| Wellesley " . . . . .           | 537        | 378      | 370                    | 455                 | 191     | 1,831  |
| Dufferin, Girls . . . . .       | 434        | 372      | 321                    | 512                 | 167     | 1,806  |
| Victoria Street, Boys . . . . . | 443        | 272      | 369                    | 437                 | 222     | 1,743  |
| John " " . . . . .              | 449        | 266      | 322                    | 414                 | 168     | 1,619  |
| Victoria " Girls . . . . .      | 469        | 224      | 285                    | 381                 | 185     | 1,545  |



There were, as usual, two Public Examinations during the year.

### HIGH AND PUBLIC SCHOOL EXAMINATIONS.

As I find some confusion of ideas existing in reference to the various High and Public School Examinations, I take the liberty of explaining the functions of those with which we in Toronto are concerned.

1. *The Combined Examination* is simply a *local* Examination. It has been conducted for many years by the Toronto School Board in order to test the comparative progress made by pupils of the same grades in the different schools of the City. It is now confined to the highest four divisions. The Examiners are appointed annually by the Board, and are selected from gentlemen not connected with Toronto Public Schools.

2. *The High School Entrance Examination* is a Provincial Examination for the admission of pupils to the High Schools and Collegiate Institutes. The Papers are prepared by the Central Committee, and examined by a Local Board at each school, consisting of the Chairman of the High School Board, the Chairman of the Public School Board, the High School Master, and the Public School Inspector. The expenses are paid in Cities by the Public School Board. I am of opinion that in justice to the Public School Board they should be paid by the High School Board. They are held twice a year.

3. *The Intermediate Examination* is also a Provincial Examination. It is intended as the basis for dividing the High Schools into Upper and Lower Schools. The Papers are prepared by the Central Committee, and read by them and Sub-Examiners, who act under their supervision. The Inspectors are the presiding Examiners at the Intermediate Examinations. They are held twice a year. Passing the Intermediate Examination is regarded by the Education Department as equivalent to taking a Second-class Non-Professional Certificate, Grade B.



### SCHOLARSHIP PUPILS AT THE COLLEGIATE INSTITUTE.

Twelve pupils from the Public Schools receive Scholarships Annually, entitling them to free tuition at the Collegiate Institute for two years. I regret that all these pupils do not remain two years at the Institute. It is pleasing, however, to find that those who are in attendance from year to year, continue to take a high position in the prize lists. The following "Scholarship" pupils passed the Intermediate Examination during the year 1877 :

|                  |                   |
|------------------|-------------------|
| REBECCA CHURCH.  | JAMES DOUGLAS.    |
| JENNIE MILNE.    | WILLIAM MILLIGAN. |
| MAGGIE SHEPPARD. | FRED. PASSMORE.   |

J. J. THOMPSON.

### STANDING AT MIDSUMMER EXAMINATION.

J. J. THOMPSON.—III Form—1st in Mathematics, 1st in French, 3rd in English, and Hon. Mention in Classics and Book-keeping.

WM. MILLIGAN.—III Form—1st in English, and Hon. Mention in Classics and French.

EDWARD HAGARTY.—IV Form—Hon. Mention in Mathematics and Classics.

A. WEBB.—IV Form—Hon. Mention in English and French.

FRED. PASSMORE.—III Form—Hon. Mention in French and German.

H. WILLIAMS.—III Form—Hon. Mention in English.

ROBERT DONALD.—IV Form—Hon. Mention in Mathematics.

JAMES DOUGLAS.—III Form—Hon. Mention in English.

ELIZA C. STURROCK.—Senior Form—Form Prize in English, 1st in English, 1st in Mathematics, 1st in (French, German and Latin), 1st in (Latin and French), 1st in Book-keeping, and Hon. Mention in Drawing and Chemistry.

AMY FELL.—Senior Form—Form Prize in Mathematics, 2nd

in Mathematics, and Hon. Mention in English, French, Drawing, Book-keeping and Chemistry.

JENNIE MILNE.—Senior Form—Hon. Mention in English, Mathematics, French, Drawing, Book-keeping and Chemistry.

REBECCA CHURCH.—Senior Form—2nd in English, 2nd in (Latin and French), and Hon. Mention in Mathematics.

JENNIE NASMITH.—Senior Form—Hon. Mention in English and French.

SARAH LOUDON.—Senior Form—Hon. Mention in English and Chemistry.

ELIZA BALMER.—Hon. Mention in Drawing.

JESSIE SEMPLE.—Hon. Mention in Drawing.

#### STANDING AT CHRISTMAS EXAMINATIONS.

FRED. PASSMORE.—IV Form—1st English, 1st Classics, 2nd Mathematics, 3rd in French, 3rd in German, and 6th in Chemistry.

EDWARD HAGARTY.—IV Form—1st Mathematics, 1st French, 3rd English, and 3rd Classics.

JAMES DOUGLAS.—IV Form—1st Book-keeping, 3rd Classics, and 7th in Chemistry.

WM. MILLIGAN.—IV Form—2nd English.

ROBERT DONALD.—IV Form—3rd Mathematics.

W. SMITH.—III Form, Div. B.—1st Classics, 1st German, and 7th in English.

JAMES ACTON.—III Form, Div. B.—8th English, and 5th Classics.

A. DEWDNEY.—III Form, Div. B.—3rd Classics.

JOHN L. POTTS.—III Form, Div. B.—4th Classics.

REBECCA CHURCH.—Senior Form—1st French, 1st Latin, 3rd English, 4th Chemistry, and 4th Book-keeping.

AMY FELL.—Senior Form—2nd French, 3rd Chemistry, 4th English, 5th Mathematics, 5th Book-keeping, and 7th Drawing.

- JENNIE NASMITH.—Senior Form—8th English and 6th Drawing.  
SARAH LOUDON.—Senior Form—5th English, and 5th Chemistry.  
MAGGIE SHEPPARD.—Senior Form—4th Mathematics, and 5th French  
ELIZA BALMER.—Form B—2nd French, and 2nd Latin.

#### JESSE KETCHUM PRIZES.

The bequest of the late Jesse Ketchum, Esq., was distributed in prizes to the pupils of the various schools on the 25th and 26th of June, by J. G. Hodgins, Esq., LL.D., and John Gillespie, Esq., assisted by Rev. Septimus Jones and Rev. A. H. Baldwin.

These prizes were given to the pupils in each class, who had the best record during the whole session for Regularity, Punctuality, Good Conduct, and Diligence in the preparation of Lessons. One-half the amount distributed was expended in Bibles, and the other in works carefully selected from the books published by the Religious Tract Society.

#### GOVERNMENT GRANT.

The amount received during the year from the Government Grant was \$6,631. The whole amount set apart for Toronto was \$8,274. The Separate Schools received \$1,643. The sum of \$8,274 is apportioned to Toronto, on the basis of its population, when compared with the other municipalities of the province at the time of the last census. This sum is then divided between the Public and Separate Schools, according to their average attendance. The amount received per pupil, was a little over \$1.13. This sum changes every year, and becomes less (per pupil) as the average attendance increases. The sum, \$8,274 remains fixed for five years, until the next census, unless the Provincial Grant is increased.

## PROGRESS OF THE PUBLIC SCHOOLS.

Table H gives a comparative statement of various items relating to the Schools since 1844. It will be seen by reference to it, that the increase in the attendance at our Schools has been very rapid.

|   |   |   |   |       |          |
|---|---|---|---|-------|----------|
| In 1857 the Average Registered No. was 2480, the Daily Attendance, 1863 |   |   |   |       |          |
| " 1867  | " | " | " | 3364, | " " 2609 |
| " 1877  | " | " | " | 7606, | " " 6860 |

The Registered and Average Attendance have thus been more than doubled during the past ten years.

Respectfully submitted,

JAMES HUGHES,

*Public School Inspector.*

Toronto, February 6, 1878.

Statistical & Reference Tables.



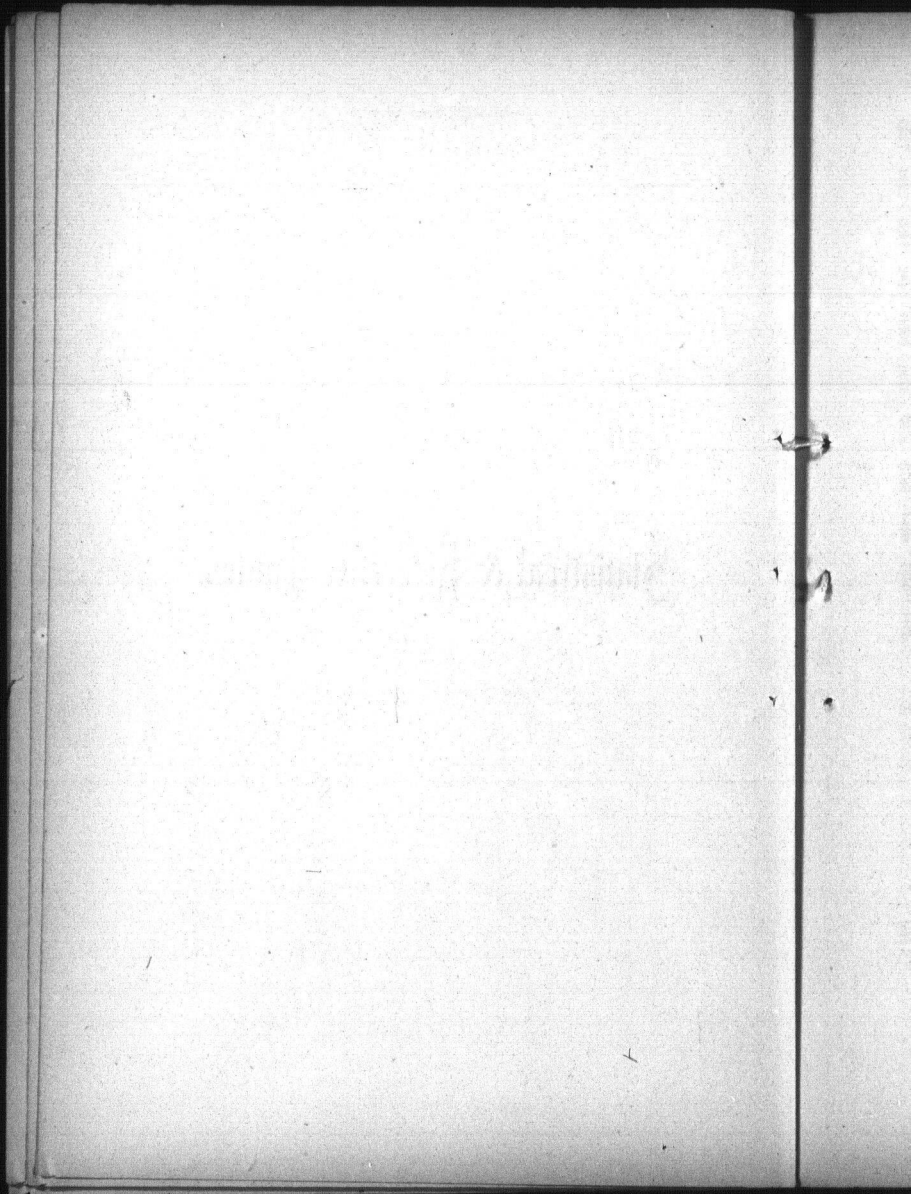


TABLE A.  
Showing the Registered Number of Pupils in each School for each Month.

| SCHOOLS.                | JAN. | FEB. | MAR. | APRIL | MAY. | JUNE. | JULY. | SEPT. | OCT. | NOV. | DEC. | Average of Registered Numbers. |
|-------------------------|------|------|------|-------|------|-------|-------|-------|------|------|------|--------------------------------|
| Dufferin .....          | 687  | 706  | 688  | 696   | 663  | 613   | 558   | 677   | 661  | 639  | 608  | 654                            |
| Wellesley .....         | 765  | 764  | 744  | 756   | 734  | 707   | 648   | 744   | 729  | 716  | 686  | 727                            |
| Ryerson .....           | 679  | 665  | 651  | 635   | 605  | 563   | 523   | 636   | 622  | 604  | 574  | 614                            |
| Park .....              | 333  | 351  | 350  | 376   | 394  | 385   | 353   | 388   | 405  | 397  | 383  | 374                            |
| George Street .....     | 344  | 347  | 339  | 356   | 367  | 362   | 312   | 362   | 373  | 372  | 342  | 352                            |
| Victoria .....          | 431  | 447  | 437  | 471   | 448  | 424   | 395   | 487   | 484  | 470  | 450  | 449                            |
| John .....              | 454  | 450  | 444  | 475   | 479  | 465   | 402   | 484   | 494  | 484  | 446  | 462                            |
| Louisa .....            | 440  | 434  | 435  | 460   | 459  | 460   | 442   | 487   | 518  | 497  | 467  | 464                            |
| John .....              | 588  | 597  | 594  | 694   | 694  | 675   | 638   | 716   | 727  | 706  | 682  | 665                            |
| Floeba .....            | 211  | 212  | 204  | 207   | 202  | 213   | 194   | 224   | 240  | 226  | 216  | 214                            |
| Palace .....            | 257  | 267  | 260  | 273   | 303  | 303   | 281   | 337   | 322  | 321  | 308  | 294                            |
| Parliament .....        | 311  | 317  | 311  | 354   | 366  | 360   | 329   | 374   | 365  | 346  | 334  | 342                            |
| Winchester Church ..... | 177  | 172  | 168  | 200   | 212  | 200   | 190   | 232   | 264  | 258  | 250  | 212                            |
| Church .....            | 240  | 231  | 227  | 253   | 273  | 261   | 242   | 284   | 299  | 306  | 306  | 285                            |
| Elizabeth .....         | 210  | 226  | 221  | 243   | 258  | 225   | 191   | 256   | 267  | 246  | 230  | 233                            |
| York .....              | 333  | 336  | 337  | 357   | 367  | 362   | 339   | 331   | 323  | 319  | 307  | 336                            |
| Bathurst .....          | 314  | 320  | 315  | 339   | 345  | 345   | 339   | 376   | 412  | 400  | 389  | 358                            |
| Niagara .....           | 216  | 236  | 239  | 271   | 279  | 279   | 254   | 300   | 322  | 305  | 254  | 269                            |
| Givins .....            | 138  | 138  | 136  | 143   | 162  | 168   | 168   | 157   | 162  | 162  | 153  | 152                            |
| Borden .....            | 80   | 64   | 59   | 78    | 84   | 69    | 58    | 83    | 77   | 70   | 67   | 72                             |
| Leasideville .....      |      |      |      |       |      |       |       | 103   | 100  | 100  | 94   | 102                            |
| Markham .....           |      |      |      |       |      |       |       | 99    | 99   | 89   | 86   | 92                             |
| Boys' Home .....        |      |      |      |       |      |       |       | 80    | 80   | 80   | 81   | 81                             |
| Girls' Home .....       |      |      |      |       |      |       |       |       |      |      |      |                                |
| Total .....             | 7211 | 7280 | 7169 | 7687  | 7705 | 7444  | 6852  | 8209  | 8329 | 8113 | 7713 | 7606                           |

TABLE B.  
Showing the Average Attendance at each School for each Month.

| SCHOOLS.            | SCHOOLS. |      |      |        |      |       |       |       |      |      |      |  |
|---------------------|----------|------|------|--------|------|-------|-------|-------|------|------|------|--|
|                     | JAN.     | FEB. | MAR. | APRIL. | MAY. | JUNE. | JULY. | SEPT. | OCT. | NOV. | DEC. |  |
| Dufferin .....      | 628      | 646  | 621  | 616    | 594  | 563   | 512   | 622   | 600  | 573  | 576  |  |
| Wellisley .....     | 692      | 688  | 677  | 687    | 673  | 656   | 620   | 692   | 676  | 657  | 651  |  |
| Eyerson .....       | 629      | 618  | 593  | 576    | 547  | 513   | 485   | 580   | 578  | 557  | 539  |  |
| Park .....          | 239      | 206  | 206  | 206    | 204  | 205   | 201   | 233   | 233  | 233  | 232  |  |
| George Street ..... | 369      | 380  | 375  | 406    | 404  | 397   | 358   | 426   | 431  | 418  | 419  |  |
| Victoria .....      | 388      | 396  | 379  | 402    | 414  | 410   | 379   | 434   | 433  | 410  | 411  |  |
| Louis .....         | 376      | 390  | 379  | 402    | 411  | 413   | 402   | 440   | 438  | 450  | 440  |  |
| Palmer .....        | 508      | 535  | 522  | 604    | 617  | 613   | 601   | 643   | 646  | 641  | 648  |  |
| Palace .....        | 176      | 184  | 169  | 169    | 177  | 189   | 181   | 197   | 206  | 201  | 195  |  |
| Parliament .....    | 212      | 223  | 211  | 235    | 251  | 270   | 260   | 309   | 303  | 295  | 288  |  |
| Winchester .....    | 266      | 274  | 251  | 305    | 320  | 317   | 263   | 336   | 317  | 312  | 312  |  |
| Church .....        | 155      | 132  | 149  | 181    | 194  | 190   | 185   | 215   | 234  | 236  | 237  |  |
| Elizabeth .....     | 197      | 201  | 214  | 231    | 246  | 245   | 238   | 254   | 258  | 255  | 251  |  |
| York .....          | 186      | 201  | 190  | 208    | 207  | 208   | 181   | 217   | 230  | 230  | 216  |  |
| Rathurst .....      | 278      | 291  | 282  | 306    | 325  | 325   | 325   | 346   | 377  | 365  | 362  |  |
| Niagara .....       | 274      | 298  | 297  | 309    | 325  | 325   | 325   | 340   | 344  | 350  | 325  |  |
| Givins .....        | 162      | 198  | 117  | 128    | 138  | 139   | 137   | 148   | 141  | 145  | 147  |  |
| Borden .....        | 54       | 44   | 36   | 60     | 64   | 56    | 52    | 79    | 79   | 61   | 62   |  |
| Leathville .....    |          |      |      |        |      |       |       | 06    | 06   | 82   | 83   |  |
| Barstman .....      |          |      |      |        |      |       |       | 58    | 80   | 86   | 68   |  |
| Boyle Home .....    |          |      |      |        |      |       |       | 78    | 78   | 78   | 80   |  |
| Girls' Home .....   |          |      |      |        |      |       |       |       |      |      |      |  |
| Total .....         | 6311     | 6427 | 6264 | 6672   | 6793 | 6726  | 6366  | 7442  | 7489 | 7322 | 7230 |  |

6311 6427 6264 6672 6798 6726 6366 7442 7489 7322 7230

**TABLE C.**  
*Showing the number of days lost through absence during the year.*

| SCHOOLS.           | Average of Monthly Registered Numbers. | Average of Monthly Registered Numbers. |                  |                  |                    |                  |                   |                  |                   |                  |                  |                  |       | TOTAL.<br>203 Days. | Average per Pupil. |
|--------------------|--|--|------------------|------------------|--------------------|------------------|-------------------|------------------|-------------------|------------------|------------------|------------------|-------|---------------------|--------------------|
|                    |  | JAN.<br>18 Days.                       | FEB.<br>20 Days. | MAR.<br>21 Days. | APRIL.<br>20 Days. | MAY.<br>21 Days. | JUNE.<br>21 Days. | JULY.<br>4 Days. | SEPT.<br>20 Days. | OCT.<br>23 Days. | NOV.<br>21 Days. | DEC.<br>14 Days. |       |                     |                    |
| Dufferin.....      | 654                                    | 601                                    | 920              | 1076             | 1195               | 1142             | 921               | 196              | 831               | 1193             | 492              | 1124             | 492   | 9691                | 15 Days            |
| Wellesley.....     | 727                                    | 854                                    | 1339             | 1205             | 924                | 1073             | 1003              | 124              | 721               | 1166             | 554              | 1184             | 554   | 10157               | 13 "               |
| Byerson.....       | 614                                    | 690                                    | 916              | 1303             | 1065               | 1069             | 1080              | 187              | 764               | 940              | 509              | 894              | 509   | 9407                | 15 "               |
| Park.....          | 374                                    | 507                                    | 758              | 1052             | 919                | 942              | 855               | 88               | 608               | 910              | 451              | 865              | 451   | 7955                | 21 "               |
| George Street..... | 352                                    | 450                                    | 461              | 954              | 688                | 783              | 947               | 68               | 492               | 718              | 265              | 716              | 265   | 6542                | 19 "               |
| Victoria.....      | 449                                    | 731                                    | 1025             | 1044             | 884                | 911              | 756               | 148              | 735               | 1155             | 479              | 863              | 479   | 8633                | 19 "               |
| Louisa.....        | 462                                    | 775                                    | 1071             | 1311             | 1131               | 1282             | 1249              | 146              | 683               | 1059             | 537              | 1537             | 546   | 10790               | 23 "               |
| John.....          | 464                                    | 690                                    | 714              | 1071             | 1024               | 802              | 756               | 128              | 536               | 1008             | 869              | 391              | 7929  | 17 "                |                    |
| Palace.....        | 665                                    | 903                                    | 1044             | 1284             | 1432               | 1526             | 1450              | 185              | 1118              | 1646             | 1401             | 578              | 322   | 2563                | 19 "               |
| .....              | 214                                    | 296                                    | 375              | 428              | 436                | 442              | 418               | 63               | 281               | 553              | 561              | 322              | 4205  | 20 "                |                    |
| Parliament.....    | 294                                    | 538                                    | 646              | 848              | 448                | 540              | 699               | 91               | 561               | 573              | 555              | 320              | 3739  | 20 "                |                    |
| .....              | 342                                    | 605                                    | 775              | 819              | 705                | 833              | 855               | 162              | 566               | 684              | 360              | 398              | 6913  | 20 "                |                    |
| Winchester.....    | 212                                    | 384                                    | 770              | 371              | 335                | 348              | 428               | 29               | 137               | 297              | 414              | 206              | 3681  | 19 "                |                    |
| Church.....        | 265                                    | 389                                    | 584              | 504              | 391                | 479              | 405               | 26               | 137               | 297              | 311              | 192              | 3725  | 14 "                |                    |
| Elizabeth.....     | 233                                    | 280                                    | 480              | 523              | 558                | 537              | 459               | 56               | 452               | 654              | 508              | 283              | 4790  | 21 "                |                    |
| York.....          | 336                                    | 511                                    | 614              | 758              | 505                | 651              | 600               | 57               | 253               | 492              | 447              | 257              | 5145  | 15 "                |                    |
| Bathurst.....      | 373                                    | 468                                    | 489              | 399              | 546                | 415              | 84                | 310              | 442               | 625              | 336              | 448              | 13    | 488                 | 13 "               |
| Niagara.....       | 269                                    | 288                                    | 294              | 513              | 457                | 554              | 464               | 78               | 381               | 810              | 730              | 262              | 4621  | 18 "                |                    |
| Givins.....        | 152                                    | 193                                    | 299              | 409              | 307                | 344              | 348               | 64               | 265               | 384              | 447              | 74               | 3134  | 21 "                |                    |
| Borden.....        | 72                                     | 549                                    | 296              | 319              | 138                | 307              | 249               | 28               | 96                | 115              | 101              | 101              | 2272  | 31 "                |                    |
| Lealville.....     | 102                                    | .....                                  | .....            | .....            | .....              | .....            | .....             | .....            | 156               | 251              | 253              | 103              | 763   | 7 "                 |                    |
| Markham.....       | 92                                     | .....                                  | .....            | .....            | .....              | .....            | .....             | .....            | 28                | 14               | 52               | 102              | 196   | 2 "                 |                    |
| Boys' Home.....    | 81                                     | .....                                  | .....            | .....            | .....              | .....            | .....             | .....            | 19                | 27               | 35               | 14               | 95    | 1 "                 |                    |
| Girls'.....        | .....                                  | .....                                  | .....            | .....            | .....              | .....            | .....             | .....            | .....             | .....            | .....            | .....            | ..... | .....               | .....              |
| Total.....         | 7606                                   | 10567                                  | 13839            | 16277            | 13991              | 15131            | 14257             | 2008             | 10183             | 15525            | 14995            | 7111             | 13384 |                     |                    |

TABLE D.

Showing the number of cases of Lateness during the year.

| SCHOOLS.            | Average of Monthly Registered Numbers. | JAN.     | FEB.     | MAR.     | APRIL.   | MAY.     | JUNE.    | JULY.   | SEPT.    | OCT.     | NOV.     | DEC.     | TOTAL.    | Average |
|---------------------|--|----------|----------|----------|----------|----------|----------|---------|----------|----------|----------|----------|-----------|---------|
|                     |  | 18 Days. | 20 Days. | 21 Days. | 20 Days. | 21 Days. | 21 Days. | 4 Days. | 23 Days. | 23 Days. | 21 Days. | 14 Days. | 203 Days. | Day.    |
| Dufferin .....      | 654                                    | 133      | 111      | 97       | 49       | 68       | 65       | 7       | 32       | 64       | 56       | 30       | 712       | 3.5     |
| Wellesley .....     | 727                                    | 228      | 108      | 82       | 53       | 35       | 30       | 12      | 9        | 4        | 42       | 10       | 653       | 3.2     |
| Ryerson .....       | 614                                    | 141      | 134      | 141      | 101      | 137      | 110      | 32      | 50       | 80       | 112      | 56       | 1103      | 5.4     |
| Park .....          | 374                                    | 126      | 103      | 151      | 47       | 101      | 105      | 11      | 46       | 55       | 77       | 49       | 682       | 5.3     |
| George Street ..... | 352                                    | 180      | 106      | 87       | 123      | 112      | 134      | 14      | 101      | 109      | 67       | 49       | 1682      | 5.3     |
| Victoria .....      | 449                                    | 197      | 156      | 201      | 130      | 89       | 69       | 6       | 33       | 44       | 34       | 37       | 996       | 4.9     |
| Louisa .....        | 462                                    | 162      | 98       | 87       | 56       | 78       | 44       | 2       | 53       | 51       | 66       | 31       | 728       | 3.5     |
| John .....          | 464                                    | 150      | 138      | 109      | 56       | 14       | 9        | 3       | 6        | 10       | 6        | 3        | 504       | 2.9     |
| Phoebe .....        | 665                                    | 313      | 246      | 298      | 165      | 157      | 110      | 32      | 87       | 95       | 79       | 42       | 1624      | 8       |
| Palace .....        | 53                                     | 49       | 56       | 42       | 39       | 38       | 3        | 15      | 27       | 28       | 26       | 24       | 374       | 1.8     |
| Parliament .....    | 214                                    | 131      | 161      | 116      | 35       | 49       | 49       | 10      | 35       | 39       | 35       | 14       | 674       | 3.3     |
| Westminster .....   | 349                                    | 187      | 107      | 124      | 57       | 31       | 129      | 11      | 60       | 46       | 30       | 11       | 859       | 4.2     |
| Church .....        | 512                                    | 187      | 132      | 107      | 37       | 47       | 4        | 53      | 43       | 33       | 33       | 25       | 435       | 2.1     |
| Elizabeth .....     | 565                                    | 108      | 109      | 126      | 107      | 143      | 18       | 0       | 12       | 38       | 39       | 14       | 900       | 2.9     |
| York .....          | 203                                    | 164      | 190      | 107      | 112      | 63       | 63       | 0       | 68       | 150      | 73       | 56       | 1141      | 5.5     |
| Bathurst .....      | 536                                    | 94       | 109      | 121      | 63       | 86       | 61       | 13      | 55       | 65       | 72       | 41       | 779       | 3.8     |
| Niagara .....       | 358                                    | 63       | 69       | 23       | 26       | 49       | 54       | 3       | 32       | 58       | 77       | 37       | 484       | 2.4     |
| Givins .....        | 269                                    | 85       | 62       | 106      | 46       | 71       | 54       | 3       | 41       | 10       | 76       | 35       | 238       | 2.9     |
| Borden .....        | 152                                    | 45       | 115      | 105      | 67       | 71       | 66       | 3       | 41       | 10       | 76       | 35       | 238       | 2.9     |
| Leslieville .....   | 72                                     | 34       | 19       | 24       | 16       | 41       | 6        | 1       | 16       | 3        | 2        | 8        | 170       | 2.5     |
| Markham .....       | 102                                    |          |          |          |          |          |          |         |          |          |          |          |           |         |
| Boys' Home .....    | 92                                     |          |          |          |          |          |          |         |          |          |          |          |           |         |
| Girls' .....        | 81                                     |          |          |          |          |          |          |         |          |          |          |          |           |         |
| Total .....         | 7606                                   | 2672     | 2213     | 2162     | 1321     | 1514     | 1225     | 190     | 902      | 1281     | 1140     | 652      | 15272     | 7.5     |



**TABLE E.**  
Showing the Average Number of Pupils to each Teacher during the year.

| SCHOOLS.            | Average Registered Attendance. | Number of Teachers. | Average per Teacher. |
|---------------------|--------------------------------|---------------------|----------------------|
| Dufferin .....      | 654                            | 12                  | 55                   |
| Wellisley .....     | 727                            | 12                  | 61                   |
| Ryerson .....       | 614                            | 12                  | 51                   |
| Park .....          | 374                            | 7                   | 53                   |
| George Street ..... | 352                            | 6                   | 59                   |
| Victoria .....      | 449                            | 8                   | 56                   |
| Louisa .....        | 462                            | 7                   | 66                   |
| John .....          | 464                            | 8                   | 58                   |
| Faehle .....        | 665                            | 11                  | 60                   |
| Falcoo .....        | 214                            | 4                   | 53                   |
| Parliament .....    | 294                            | 5                   | 73                   |
| Winchester .....    | 242                            | 5                   | 68                   |
| Church .....        | 212                            | 4                   | 53                   |
| Elizabeth .....     | 233                            | 4                   | 58                   |
| York .....          | 320                            | 4                   | 84                   |
| Bathurst .....      | 358                            | 4                   | 89                   |
| Niagara .....       | 268                            | 5                   | 79                   |
| Givins .....        | 152                            | 2                   | 76                   |
| Borden .....        | 72                             | 2                   | 36                   |
| Leasville .....     | 102                            | 2                   | 51                   |
| Markham .....       | 92                             | 1                   | 92                   |
| Boys Home.....      | 81                             | 1                   | 81                   |
| GIRLS .....         |                                |                     |                      |
| Total.....          | 7606                           | 128                 | 59                   |

**TABLE F.**  
Showing the length of time the Pupils attended during the year.

| Less than 20 Days. | Between 20 and 50 Days. | Between 50 and 100 Days. | Between 100 and 150 Days. | Between 150 and 200 Days. | More than 200 Days. |
|--------------------|-------------------------|--------------------------|---------------------------|---------------------------|---------------------|
| 42                 | 97                      | 167                      | 165                       | 344                       | 120                 |
| 38                 | 74                      | 225                      | 195                       | 353                       | 132                 |
| 22                 | 51                      | 148                      | 137                       | 331                       | 169                 |
| 34                 | 72                      | 110                      | 33                        | 200                       | 26                  |
| 29                 | 62                      | 113                      | 195                       | 274                       | 21                  |
| 33                 | 76                      | 164                      | 111                       | 217                       | 56                  |
| 34                 | 74                      | 143                      | 120                       | 218                       | 57                  |
| 36                 | 76                      | 145                      | 177                       | 369                       | 57                  |
| 46                 | 107                     | 161                      | 177                       | 369                       | 57                  |
| 33                 | 39                      | 85                       | 58                        | 113                       | 14                  |
| 35                 | 30                      | 85                       | 79                        | 154                       | 25                  |
| 22                 | 39                      | 60                       | 108                       | 148                       | 35                  |
| 12                 | 41                      | 74                       | 62                        | 97                        | 24                  |
| 52                 | 37                      | 67                       | 65                        | 136                       | 22                  |
| 36                 | 46                      | 62                       | 56                        | 100                       | 30                  |
| 13                 | 43                      | 74                       | 72                        | 178                       | 49                  |
| 59                 | 58                      | 145                      | 133                       | 192                       | 46                  |
| 27                 | 58                      | 86                       | 53                        | 137                       | 35                  |
| 6                  | 24                      | 39                       | 39                        | 69                        | 3                   |
| 13                 | 23                      | 18                       | 31                        | 27                        | 3                   |
| 36                 | 28                      | 59                       | 15                        | 12                        | 2                   |
| 11                 | 12                      | 82                       | ...                       | ...                       | ...                 |
| 2                  | 4                       | 78                       | ...                       | ...                       | ...                 |
| 596                | 1171                    | 2487                     | 1079                      | 3787                      | 990                 |



TABLE H.

Comparative Statement of the City Schools, under specific headings,  
from 1844 to 1877, both inclusive.

| Year. | City Population. | Average Registered Attendance. | Average Daily Attendance. | No. of Teachers. | Average No. of Pupils to each Teacher. | Total Cost of Maintaining the Schools. | Cost per Child per ann. on basis of Registered Attendance. | Cost per Child per ann. on basis of Daily Attendance. |
|-------|------------------|--------------------------------|---------------------------|------------------|--|--|--|---|
| 1844  | 18500            | .....                          | 1194                      | 12               | 100                                    | 4½ months \$5508                       | .....  | \$5 00  |
| 1845  | 19706            | .....                          | 1108                      | 12               | 92                                     | 12 " " 7684                            | .....  | 7 00  |
| 1846  | 20565            | .....                          | 1212                      | 15               | 81                                     | 12 " " 8044                            | .....  | 6 60  |
| 1847  | 21734            | .....                          | 1265                      | 13               | 97                                     | 12 " " 7484                            | .....  | 6 00  |
| 1848  | 23503            | .....                          | 1431                      | 13               | 110                                    | 6 " " 3668                             | .....  | 5 20  |
| 1849  | 24226            | .....                          | 1325                      | 13               | 102                                    | 6 " " 3668                             | .....  | 5 08  |
| 1850  | 25766            | .....                          | 1259                      | 15               | 91                                     | 12 " " 7992                            | .....  | 6 30  |
| 1851  | 30762            | 1843                           | 1366                      | 16               | 85                                     | 12 " " 9624                            | .....  | 7 20  |
| 1852  | 35000            | 1872                           | 1346                      | 16               | 84                                     | 12 " " 10232                           | \$5 80   | 7 40  |
| 1853  | 40000            | 1886                           | 1402                      | 20               | 70                                     | 12 " " 12860                           | 5 40   | 9 00  |
| 1854  | 41500            | 1971                           | 1459                      | 21               | 69                                     | 12 " " 16704                           | 7 00   | 11 40   |
| 1855  | 42500            | 3066                           | 1570                      | 31               | 50                                     | 12 " " 20872                           | 8 50   | 13 00   |
| 1856  | 43250            | 2318                           | 1747                      | 32               | 35                                     | 12 " " 22568                           | 10 00  | 12 80   |
| 1857  | 45000            | 2480                           | 1863                      | 36               | 32                                     | 12 " " 24216                           | 10 00  | 13 00   |
| 1858  | 47500            | 2522                           | 1987                      | 36               | 55                                     | 12 " " 26396                           | 9 69   | 12 80   |
| 1859  | 45000            | 2742                           | 2150                      | 38               | 56                                     | 12 " " 25212                           | 9 20   | 11 73   |
| 1860  | 45000            | 2846                           | 2260                      | 38               | 59                                     | 12 " " 26044                           | 9 15   | 11 52   |
| 1861  | 44743            | 2800                           | 2180                      | 38               | 57                                     | 12 " " 25640                           | 9 16   | 11 75   |
| 1862  | 45000            | 2825                           | 2183                      | 38               | 57                                     | 12 " " 25054                           | 8 94   | 11 48   |
| 1863  | 47500            | 3000                           | 2287                      | 38               | 60                                     | 12 " " 25636                           | 8 54   | 11 21   |
| 1864  | 47500            | 3121                           | 2400                      | 39               | 61                                     | 12 " " 26184                           | 8 39   | 10 91   |
| 1865  | 47500            | 3248                           | 2251                      | 40               | 56                                     | 12 " " 26448                           | 8 11   | 11 75   |
| 1866  | 47500            | 3139                           | 2399                      | 41               | 58                                     | 12 " " 27548                           | 8 52   | 11 17   |
| 1867  | 47000            | 3364                           | 2609                      | 41               | 64                                     | 12 " " 26900                           | 7 99   | 10 31   |
| 1868  | 50000            | 3657                           | 2810                      | 45               | 62                                     | 12 " " 29044                           | 7 94   | 10 33   |
| 1869  | 55000            | 3906                           | 3132                      | 46               | 68                                     | 12 " " 30460                           | 7 80   | 9 73  |
| 1870  | 56000            | 4106                           | 3288                      | 50               | 63                                     | 12 " " 33348                           | 8 02   | 10 02   |
| 1871  | 57500            | 4646                           | 3638                      | 52               | 70                                     | 12 " " 35000                           | 7 53   | 9 62  |
| 1872  | 58000            | 5100                           | 4070                      | 61               | 67                                     | 12 " " 42500                           | 8 33   | 10 44   |
| 1873  | 60000            | 5536                           | 4453                      | 65               | 69                                     | 12 " " 55500                           | 10 02  | 12 46   |
| 1874  | 62000            | 5924                           | 4814                      | 75               | 84                                     | 12 " " 52000                           | 6 31   | 10 80   |
| 1875  | 64000            | 6447                           | 5386                      | 90               | 72                                     | 12 " " 58772                           | 6 08   | 10 91   |
| 1876  | 65000            | 6912                           | 5976                      | 94               | 73                                     | 12 " " 60456                           | 6 17   | 10 13   |
| 1877  | 67000            | 7606                           | 6860                      | 128              | 59                                     | 12 " " 76006                           | 6 90   | 11 07   |

TABLE I.

List of Teachers, arranged with a view to secure Equitable Promotion, and showing the Division taught by each Teacher; their Certificates; Places of Training; and the dates at which they entered the service of the Board.

| NAMES.                     | CERTIFICATES.     | WHERE TRAINED.           | ENTERED SERVICE OF BOARD. |
|----------------------------|-------------------|--------------------------|---------------------------|
| <b>PRINCIPALS.</b>         |                   |                          |                           |
| Anderson, James .....      | Provincial 2nd B. | Edinburgh, Scotland      | January, 1858             |
| Birchard, Isaac J .....    | Provincial 1st A. | Prov. Normal School      | September, 1874           |
| Chapbell, John .....       | County Bd. 1st A. | Prov. Normal School      | September, 1868           |
| Churchill, Miss C. M ..... | Provincial 1st B. | Prov. Normal School      | September, 1858           |
| Clark, Levi .....          | Provincial 1st C. | .....                    | November, 1874            |
| Coyne, Samuel .....        | County Bd. 1st A. | Dublin.                  | April, 1872               |
| Craus, George .....        | Provincial 2nd B. | Prov. Normal School.     | January, 1877             |
| Donn, Robert W .....       | Provincial 1st B. | Prov. Normal School.     | April, 1872               |
| Gill, Martin .....         | County Ed. 1st A. | Dublin, Ch. Ed. Society. | November, 1859            |
| Lewis, Richard .....       | County Ed. 1st B. | Liverpool, England.      | November, 1869            |
| Martin, R. T. ....         | Provincial 2nd B. | Prov. Normal School.     | January, 1877             |
| Millster, Samuel .....     | Provincial 1st A. | .....                    | November, 1869            |
| McDonald, Robert .....     | County Bd. 1st A. | Prov. Normal School.     | January, 1864             |
| McDonald, Adam F. ....     | County Bd. 1st A. | .....                    | May, 1861                 |
| Morrison, Adam .....       | Provincial 2nd B. | Prov. Normal School.     | January, 1876             |
| Phillips, John .....       | County Bd. 1st C. | .....                    | June, 1868                |
| Powell, George K. ....     | Provincial 1st A. | Prov. Normal School.     | January, 1877             |
| Pyne, Albert R. ....       | Provincial 1st C. | .....                    | August, 1875              |
| Spence, Francis S. ....    | Provincial 1st B. | Prov. Normal School.     | September, 1874           |
| Spotton, Wm. ....          | County Bd. 1st C. | .....                    | January, 1877             |
| <b>ASSISTANT MASTERS.</b>  |                   |                          |                           |
| Browne, Henry .....        | County Bd. 1st A. | .....                    | March, 1874               |
| Hendry, Andrew .....       | Provincial 1st C. | Prov. Normal School.     | September, 1874           |
| Meldrum, Peter G. ....     | Provincial 1st B. | Prov. Normal School.     | September, 1874           |

TABLE I. (Continued.)  
FEMALE ASSISTANT TEACHERS.

| NAMES.                      | DIVISION. | CERTIFICATES.     | WHERE TRAINED.      | ENTERED SERVICE<br>OF BOARD.<br>(Last time.) |
|-----------------------------|-----------|-------------------|---------------------|--|
| Miss Margaret Baik .....    | First.    | Provincial 1st A. | Prov. Normal School | 1865   |
| " Olivia Dunn .....         | "         | Provincial 1st A. | "                   | January, 1864                                |
| " M. J. Keown .....         | "         | County Ed. 1st A. | "                   | April, 1852                                  |
| " Susan Hamilton .....      | Second.   | County Ed. 1st C. | "                   | April, 1858                                  |
| " Charlotte Spotton .....   | "         | Provincial 1st E. | "                   | April, 1866                                  |
| " Mary A. Worth .....       | "         | Provincial 1st A. | "                   | September, 1870                              |
| " Charlotte Fraser .....    | Third.    | Provincial 1st C. | "                   | October, 1871                                |
| " Elizabeth Kennedy .....   | "         | Provincial 2nd.   | "                   | November, 1855                               |
| " Sarah McCraith .....      | "         | Provincial 1st A. | "                   | April, 1872                                  |
| " Margaret Sutherland ..... | "         | Provincial 1st A. | "                   | October, 1872                                |
| " Rebecca Thompson .....    | "         | Provincial 2nd A. | "                   | October, 1839                                |
| " E. A. Williams .....      | "         | Provincial 1st E. | "                   | October, 1870                                |



TABLE I. (Continued.)  
FEMALE ASSISTANT TEACHERS.

| NAMES.                       | DIVISION. | CERTIFICATES.     | WHERE TRAINED.          | ENTERED SERVICE OF BOARD. (Last time.) |
|------------------------------|-----------|-------------------|-------------------------|--|
| Miss Margaret Coyne .....    |           |                   |                         |  |
| " S. M. Hamilton .....       | Fourth.   | Provincial 1st C. | Prov. Normal School.    | February, 1871                         |
| " S. J. Hamilton .....       | "         | Provincial 1st C. | "                       | January, 1878                          |
| " Agnes Kelloch .....        | "         | Provincial 1st C. | "                       | August, 1875                           |
| " Jessie Rogers .....        | "         | Provincial 1st B. | "                       | April, 1872                            |
| " Georgina Round .....       | "         | County Bd. 1st A. | London Training School. | January, 1865                          |
|                              |           |                   |                         | 1866                                   |
| " Annie Armstrong .....      | Fifth.    | Provincial 2nd A. | Prov. Normal School.    | July, 1861                             |
| " Annie I. Cameron .....     | "         | County Bd. 1st C. | "                       | August, 1875                           |
| " Jessie Campbell .....      | "         | Provincial 2nd A. | "                       | October, 1870                          |
| Mrs. Annie Carey .....       | "         | Provincial 1st C. | "                       | September, 1870                        |
| Miss Jane A. Cruise .....    | "         | County Bd. 1st B. | "                       | September, 1870                        |
| " Helen Fraser .....         | "         | Provincial 1st C. | "                       | January, 1872                          |
| Mrs. Emma Gray .....         | "         | Provincial 1st C. | "                       | March, 1874                            |
| Mrs. E. A. Keen .....        | "         | Provincial 1st C. | "                       | April, 1874                            |
| Miss Elizabeth Kennedy ..... | "         | Provincial 1st B. | "                       | April, 1872                            |
| " Kate Lennon .....          | "         | Provincial 2nd B. | "                       | March, 1863                            |
| " Kate A. Scarlett .....     | "         | County Bd. 1st A. | "                       | June, 1874                             |
| " Miss Jane Smyth .....      | "         | Provincial 1st C. | "                       | March, 1874                            |
| Mrs. Kate Stevenson .....    | "         | Provincial 1st C. | "                       | September, 1869                        |
| Miss Maria Woods .....       | "         | Provincial 1st C. | "                       | January, 1873                          |

|                           |          |                   |                      |                 |
|---------------------------|----------|-------------------|----------------------|-----------------|
| Mrs. J. S. Arthurs.....   | Sixth.   | Provincial 1st A. | Prov. Normal School. | February, 1876  |
| " M. A. Fitzgerald.....   | "        | Provincial 2nd A. | "                    | August, 1872    |
| Miss Margaret Fraser..... | "        | Provincial 1st C. | "                    | September, 1874 |
| " Carrie Gray.....        | "        | Provincial 1st A. | "                    | January, 1873   |
| " Mary Gunn.....          | "        | Provincial 1st B. | "                    | September, 1874 |
| " Phebe Johnston.....     | "        | Provincial 1st B. | "                    | December, 1872  |
| Mrs. Lillie Leadlay.....  | "        | Provincial 1st B. | "                    | March, 1872     |
| Miss Susan McKenzie.....  | "        | Provincial 2nd A. | "                    | April, 1870     |
| Mrs. Kate Rowland.....    | "        | Provincial 2nd A. | "                    | September, 1870 |
| Miss Amelia Sims.....     | "        | Provincial 2nd A. | "                    | February, 1871  |
| " Georgina Stokes.....    | "        | Provincial 1st C. | "                    | January, 1871   |
| " Lizzie Wills.....       | "        | Provincial 2nd B. | "                    | April, 1873     |
|                           |          |                   |                      |                 |
| " Annie Chambers.....     | Seventh. | Provincial 2nd B. | "                    | May, 1872       |
| " Ada Frisby.....         | "        | Provincial 2nd A. | "                    | March, 1874     |
| " Margaret Hunter.....    | "        | Provincial 2nd B. | "                    | April, 1873     |
| " Hennie How.....         | "        | Provincial 2nd B. | "                    | February, 1875  |
| Mrs. Emma Lilly.....      | "        | Provincial 2nd.   | "                    | September, 1875 |
| Miss Margaret Newton..... | "        | Provincial 1st C. | "                    | January, 1875   |
| Mrs Georgina Riches.....  | "        | Provincial 2nd B. | "                    | September, 1875 |
| " Harriet Somerville..... | "        | Provincial 2nd B. | "                    | September, 1874 |

TABLE I. (Continued.)  
FEMALE ASSISTANT TEACHERS.

| NAME.                        | DIVISION. | CERTIFICATES.     | WHERE TRAINED.       | ENTERED SERVICE OF BOARD.<br>(Last time.) |
|------------------------------|-----------|-------------------|----------------------|---|
| Mrs. J. N. Agnew .....       | Eighth.   | Provincial 1st.   | Prov. Normal School. | October, 1875                             |
| " J. S. Balmer .....         | "         | Provincial 1st.   | "                    | April, 1876                               |
| Miss Thomascina Carlyle..... | "         | Provincial 2nd B. | "                    | August, 1875                              |
| " E. J. Church .....         | "         | Provincial 2nd B. | "                    | August, 1875                              |
| " Alice Freeman .....        | "         | Provincial 2nd B. | "                    | October, 1875                             |
| " Louisa Lumsden .....       | "         | Provincial 2nd B. | "                    | August, 1875                              |
| Mrs. J. A. McBrien .....     | "         | Provincial 2nd B. | "                    | September, 1874                           |
| " M. A. McDonald .....       | "         | County B1, 1st C. | "                    | August, 1875                              |
| Miss Isabella Mearns .....   | "         | Provincial 1st B. | "                    | September, 1875                           |
| " Margaret E. Riddel .....   | "         | Provincial 2nd B. | "                    | August, 1875                              |
| " Ada Rowell .....           | "         | Provincial 2nd B. | "                    | January, 1875                             |
| " V. St. G. Scarlett .....   | "         | Provincial 2nd B. | "                    | January, 1875                             |
| " V. Maria Sefton .....      | "         | Provincial 2nd B. | "                    | May, 1875                                 |
| " M. S. S. .....             | "         | Provincial 2nd B. | "                    | January, 1876                             |
| " Carrie J. Watson .....     | "         | Provincial 2nd B. | "                    | September, 1875                           |
| " Mary A. Westman .....      | "         | Provincial 2nd A. | "                    | October, 1875                             |
| " .....                      | "         | Provincial 2nd A. | "                    | August, 1875                              |

|                        |        |                   |                      |                |
|------------------------|--------|-------------------|----------------------|----------------|
| Miss Kate M. Allan     | Ninth. | Provincial 2nd A. | Prov. Normal School. | October, 1876  |
| Mrs. A. F. Armour      | "      | Provincial 2nd B. | "                    | January, 1877  |
| Catharine Beckon       | "      | Provincial 1st B. | "                    | January, 1877  |
| Mrs. M. J. Chilton     | "      | Provincial 2nd B. | "                    | November, 1876 |
| Miss G. Virginia Grant | "      | Provincial 2nd B. | "                    | January, 1877  |
| " Annie C. Gray        | "      | Provincial 2nd A. | "                    | January, 1877  |
| " Jennie Guim          | "      | Provincial 1st    | "                    | August, 1876   |
| Charlotte Jackson      | "      | Provincial 2nd B. | "                    | October, 1877  |
| Mrs. McCullig          | "      | Provincial 2nd B. | "                    | January, 1877  |
| Miss Louisa Payne      | "      | Provincial 2nd B. | "                    | January, 1877  |
| Miss E. Y. Sams        | "      | Provincial 2nd B. | "                    | January, 1887  |
| " Lois Slater          | "      | Provincial 2nd B. | "                    | January, 1887  |
| Mrs. Steward           | "      | County Ed. 1st B. | "                    | February, 1877 |
| Miss Emily C. Thompson | "      | Provincial 1st A. | "                    | February, 1877 |
| Mrs. S. E. Wallace     | "      | Provincial 2nd B. | "                    | January, 1877  |
| Miss-M. L. Williams    | "      | Provincial 1st.   | "                    | May, 1877      |
|                        |        |                   | "                    | January, 1877  |

TABLE I. (Continued.)  
FEMALE ASSISTANT TEACHERS.

| NAMES.                       | DIVISION. | CERTIFICATES.     | WHERE TRAINED.       | ENTERED SERVICE<br>of BOARD.<br>(Last time.) |
|------------------------------|-----------|-------------------|----------------------|--|
| Miss Eliza M. Chadwick ..... | Tenth.    | Provincial 2nd B. | Prov. Normal School. | January, 1877                                |
| " Louisa Cormor .....        | "         | Provincial 1st B. | "                    | January, 1878                                |
| " Elizabeth Condit .....     | "         | Provincial 2nd B. | "                    | January, 1877                                |
| " Lizette Cuthley .....      | "         | Provincial 2nd B. | "                    | January, 1877                                |
| " E. R. Gray .....           | "         | Provincial 2nd B. | "                    | January, 1877                                |
| " Annie S. Gray .....        | "         | Provincial 2nd A. | "                    | February, 1878                               |
| " Sarah Hagarly .....        | "         | Provincial 2nd B. | "                    | January, 1877                                |
| " L. Kesick .....            | "         | Provincial 2nd B. | "                    | January, 1877                                |
| " Fannie Martin .....        | "         | Provincial 2nd B. | "                    | September, 1877                              |
| " Agnes McIntyre .....       | "         | Provincial 2nd B. | "                    | September, 1877                              |
| " Maggie Milne .....         | "         | Provincial 2nd B. | "                    | October, 1877                                |
| " Annie M. Sefton .....      | "         | Provincial 2nd B. | "                    | January, 1877                                |
| " Florence Sims .....        | "         | Provincial 2nd B. | "                    | October, 1871                                |
| " Maggie Shore .....         | "         | Provincial 2nd B. | "                    | January, 1877                                |
| " Margaret E. Spence .....   | "         | Provincial 2nd A. | "                    | September, 1877                              |
| " Mary F. Spence .....       | "         | Provincial 2nd A. | "                    | October, 1877                                |
| " L. S. Sturrock .....       | "         | Provincial 2nd B. | "                    | October, 1877                                |
| " L. S. Thomson .....        | "         | Provincial 2nd B. | "                    | January, 1877                                |
| " Florence Thomson .....     | "         | Provincial 2nd B. | "                    | January, 1877                                |
| " Fannie Woodhouse .....     | "         | Provincial 2nd B. | "                    | April, 1877                                  |



Examiners' Report.

Journal of the  
American Society of  
Climatologists

REPORT  
OF THE  
Examiners in regard to the Combined Examinations.

---

The Examiners have the honour to report that, in the discharge of the duty entrusted to them, they examined on the 28th and 29th of June, the selected pupils sent up to them from the several Public Schools in the City in which the advanced pupils are taught. The Examination was conducted in the Dufferin and Ryerson Schools, and, as in former years, was throughout a written one. The number of pupils appearing was 222; they came in proportions, to be afterwards stated, from the four highest divisions. The Examiners submit the following results, as brought out by a careful comparison of the papers handed in to them.

I. FOURTH DIVISION.

The pupils of this Division numbered 50. They were taken from the Fourth Divisions of the following Schools: the Dufferin, the Ryerson, the Wellesley, Victoria Street and John Street, ten from each, five boys and five girls. They were examined in Reading, Spelling, Writing, Arithmetic, History, Geography and Grammar. Taking a *general* view of the Schools in this division, the Girls' department in the Wellesley stands first; the same department in John Street follows at no great distance. Of Boys' departments, the Dufferin and Ryerson Schools stand highest, and are nearly equal. The highest prizes in this, as in the other divisions, are given for General Proficiency; the holders of these are

7

very properly not permitted to take prizes also for excellence in the separate branches of study included in the Examination. The Examiners recommend the General Proficiency Prizes to be awarded to the following :

1. Jane Caswell, John Street.
2. Ida Walker, Wellesley.
3. Amelia Butler, "
4. Emily Maybee, Ryerson.

Taking the subjects separately, or in natural groups, the Examiners find that, in this division, the greatest excellence in Arithmetic was exhibited by the Girls' department in the Wellesley and Ryerson Schools, and by the Boys' department in Wellesley School in the order named. They find that the highest marks in Grammar were gained by the Girls' department in Wellesley School, by the Boys' department in the Dufferin, and by the Girls' department in John Street. In History and Geography the Girls' department in Wellesley School stands first, and the same department in John Street stands second. In these branches, the standard of attainment varies much, the highest school being fifty per cent. in advance of the lowest. In Reading and Spelling the first place is taken by the Girls' department in the Dufferin School, and the second by the same department in John Street. In Writing the greatest excellence was shewn by the Boys' department in Victoria Street, and by the Girls department in Wellesley School.

As a whole, the pupils in this division have displayed very creditable attainments in Arithmetic, Grammar and Spelling. The Reading was not as satisfactory as the Spelling, and several schools shewed imperfect acquaintance with the History prescribed.

In addition to the Prizes for proficiency in all the branches, the Examiners recommend the following to be given in the branches named :—

## I. ARITHMETIC.

1. L. A. C. McConnel, John Street. 2. Frank Consaul, Wellesley. 3. Wilson Howard, Wellesley. 4. Fanny Dennis, Wellesley, and Robert Irwin, Dufferin.

## II. GRAMMAR.

1. Bruce Bailey, Dufferin. 2. Mary Bailey, John Street. 3. Ada Ramsay, John Street. 4. John M. Mitchell, Victoria Street.

## III. HISTORY AND GEOGRAPHY.

1. Fanny Dennis, Wellesley. 2. Clara Hatchborn, Wellesley. 3. Robert Irwin, Dufferin. 4. Maggie McCallum, Wellesley.

## IV. READING AND SPELLING.

1. Annie Wilde, Dufferin. 2. Ada Ramsay, John Street. 3. Fanny Duffy, John Street. 4. Howard Wilson, Wellesley, and Mary Bailey, John Street.

## V. WRITING.

1. George Young, Ryerson. 2. John M. Mitchell, Victoria Street.

## II. THIRD DIVISION.

Twenty pupils appeared for Examination in this division, from the Girls' department in the corresponding division of the Dufferin and Ryerson Schools, and from the Boys' department in the same Schools, being forty in all. They were examined in the same subjects as the Fourth Division. On the whole subjects, the best examination was passed by the Girls' department of the Ryerson School, and the next best by the Boys' department of the Dufferin School.

Coming to the separate branches: in Arithmetic the highest place is taken by the Girls' department in the Ryerson School, and by the Boys' department in the Dufferin; the two being nearly as possible equal. In Grammar, the highest place is taken by the



same departments, with the Ryerson School considerably in advance. In History and Geography the Ryerson School, in both departments, stands first. In Reading, Spelling and Writing the same school still takes the first place.

The Examiners recommend Prizes to be given in this division to the following :

I. GENERAL PROFICIENCY.

1. John Warwick, Dufferin. 2. Lilly Brown, Ryerson. 3. Esther Robinson, Ryerson. 4. Fredericca McQueen, Ryerson.

II. ARITHMETIC.

1. James Watt, Dufferin. 2. Arthur Green, Dufferin. 3. Jessie Ashbridge, Dufferin. 4. Edith Dunn, Ryerson, and Albert Hibbit, Dufferin.

III. GRAMMAR.

1. Albert Hibbet, Dufferin. 2. Laura Sanderson, Ryerson. 3. Rachel Lowry, Ryerson. 4. Edith Dunn, Ryerson.

IV. HISTORY AND GEOGRAPHY.

1. Sarah Briggs, Ryerson. 2. William A. Hunter, Ryerson. 3. William McFarlane, Ryerson. 4. Rachel Lowry, Ryerson.

V. READING AND SPELLING.

1. Sarah Briggs, Ryerson. 2. Edith Dunn, Ryerson. 3. William McFarlane, Ryerson. 4. Jessie Hutchison, Ryerson.

VI. WRITING.

1. Maggie Tripp, Ryerson. 2. Sarah Briggs, Ryerson. 3. Frederick Ross, Ryerson.

III. SECOND DIVISION.

In this division sixty pupils appeared for Examination, being ten from each department in the corresponding divisions in the Dufferin, Ryerson and Wellealey Schools. In addition to the

branches in which the pupils of the Third and Fourth Divisions have been said to be examined, those in this division were examined in Algebra and Derivations. Very satisfactory acquaintance with the subjects as a whole, was shewn by the pupils of this division, but more especially by those in the Girls' departments. The explanation is, probably, the greater age of the Girls, and the consequently longer period which they have been under training; the fact of superior attainments on the part of the Girls, comes out unmistakably in this division.

In the Examination, as a whole, the Girls' department of the Wellesley School stands first; the same department in the Dufferin School, second. Prizes for General Proficiency are awarded as follows:

1. Lizzie Robins, Wellesley.
2. Minnie Sale, Dufferin.
3. Maggie Johnston, Wellesley.
4. Jane Acton, " "

Turning to the separate branches, the best Examination was passed in Arithmetic and Algebra, by the Girls' department in Wellesley; in Grammar, History, Geography and Writing by the same department, in the same school; and in Reading, Spelling and Derivation by the Girls' department in the Dufferin School.

In addition to those for General Proficiency, the Examiners recommend the following Prizes to be given in the separate subjects:

MATHEMATICS.

1. Dollie Faircloth, Dufferin.
2. Haldane McLean, Wellesley.
3. Nellie Phillips, Dufferin.
4. Louisa Thomas, Wellesley.

GRAMMAR.

1. Alice McIntyre, Dufferin.
2. Nellie Phillips, Dufferin.
3. Lillie Slaen, Wellesley.
4. Lizzie Phillips, Dufferin.

## HISTORY AND GEOGRAPHY.

1. Sydney Brown, Ryerson. 2. Marvin Briggs, Wellesley. 3. Hattie Elliot, Ryerson. 4. Isabella Brydon and Hattie Holmes, Wellesley.

## READING, SPELLING AND DERIVATION.

1. Louisa Thomas, Wellesley. 2. Nellie Wooley, Ryerson. 3. Annie Burfoot, Dufferin. 4. Haldane McLean, Wellesley.

## WRITING.

1. George Culp, Dufferin. 2. William Orr, Dufferin. 3. Lizzie Pitman, Wellesley.

## IV. FIRST DIVISION.

In the first or highest division, seventy-two pupils appeared for Examination. Twelve from each department of the corresponding divisions in Dufferin, Wellesley and Ryerson Schools. The branches in which the pupils were examined, were the same as in the former division, with the addition of Geometry, Composition and Book-keeping. The different schools approached uniformity of excellence more nearly than in the lower divisions. Taking the aggregate Marks in all the branches, the highest place is taken by the Boys' department in the Dufferin School; the other schools came in the following order, the Girls' department in Wellesley, the Girls' department in the Ryerson, the same department in the Dufferin, the Boys' department in the Ryerson, and the same department in Wellesley. Of the subjects in connection with which the most creditable attainments were exhibited, Arithmetic, Grammar and History may be mentioned. The Papers returned in Geometry and Algebra were of very unequal merit. Several perfect Papers were given in, in each of these subjects, while a few were markedly defective.

In determining the Prizes, Algebra, Geometry and Arithmetic

were grouped together. In these subjects, the first place was taken by the Boys' department in the Dufferin School, and the second, by the Girls' department in Wellesley. In Grammar, the first and second places were taken by the same. In History and Geography, the first place was taken by the Girls' department in the Ryerson School, and the second, by the Boys' department in the Dufferin. In Reading, Spelling and Definitions, the Girls' department of the Ryerson School comes first, the same department of the Dufferin School second. In Writing and Book-keeping, the Boys' department in the Dufferin School, and the Girls' department in the Ryerson are first, and are nearly equal.

The Medals to be given to the first boy and the first girl in the Public Schools have been honourably won by Jessie Agnew of the Dufferin School, and by James Acton of the same school. These, the two successful competitors for this honourable distinction, were very nearly equal, the girl being only five marks ahead of the boy in an aggregate of over 700. It is only proper to say that another girl from the same school gave in Papers of nearly equal value to the two who carry off the Medals for the year.

The Examiners recommend Scholarships for General Proficiency to be given as follows :

1. Jessie Agnew, Dufferin. 2. James Acton, Dufferin. 3. Sarah Tomlinson, Dufferin, 4. John Lye, Wellesley. 5. Anne Scott, Wellesley. 6. Ellen Daw, Wellesley. 7. John F. Potts, Ryerson. 8. Mamie Sturrock, Wellesley. 9. A. Dewdney, Dufferin. 10. William H. Smith, Dufferin. 11. George Sheppard, Ryerson. 12. Jessie Niven, Dufferin.

They recommend that Prizes be given for excellence in special subjects as follows :

MATHEMATICS.

1. George Parks, Wellesley. 2. Marion Anderson, Wellesley.  
3. Christina Niven, Dufferin. 4. Katie Peacock, Ryerson.



## GRAMMAR AND COMPOSITION.

1. Hannah Warner, Wellesley.
2. Annie Pursey, Wellesley.
3. Arthur Lawson, Dufferin.
4. Eliza Wallace, Dufferin.

## HISTORY AND GEOGRAPHY.

1. Mary J. Duffy, Ryerson.
2. May Jones, Ryerson.
3. Katie Keeler, Ryerson.
4. Thomas Elwood, Dufferin.

## READING AND SPELLING.

1. Mary J. Duffy, Ryerson.
2. Annie Watson, Ryerson.
3. Harry Holgate, Ryerson.
4. Marion Anderson, Wellesley.

## WRITING AND BOOK-KEEPING.

1. Maggie Young, Ryerson.
2. James Templeman, Dufferin.
3. Thomas Elwood, Dufferin.

In last year's Report, the Examiners felt it a pleasure to bear testimony to the excellent results of changes introduced some time previous by the School Board of the City, especially in the matter of *grading* the pupils more carefully than it had been found possible to do under the former system. The Examinations now completed, and the results of which they have had the honour to report, only confirm the opinion expressed a year ago. Both teachers and pupils have advantages now, of a very important kind, over those previously enjoyed. The results are, higher excellence and greater uniformity of attainment. So far as the Examiners are able to judge, the Public Schools of Toronto are in a high state of efficiency. The Papers which they have read, testify both to much earnest drill on the part of the teachers, and to a great diligence and industry on the part of the scholars. Every one at all acquainted with the history of these schools, will be ready to acknowledge that not a little of their progress in numbers and in efficiency is due to the



zeal and tact of the Inspector. The Examiners have received valuable assistance from him, as in former years.

JOHN M. KING, M.A.

A. McMURCHY, M.A.

I. TOVELL.

JOHN PATTERSON, M.A.

Toronto, July 9. 1877.

The following prizes were presented to the Junior Divisions of the various schools:—

RYERSON SCHOOL.

*Fifth Division.* Boys—1. Thomas Lewell. 2. John Gettum.  
3. Wm. McClughan.

*Fifth Division,* Girls—1. Mary A. Gardner. 2. Mary Hodgins. 3. Maggie McGrath.

*Sixth Division.* Boys—1. John Jessiman. 2. Frederick Burton. 3. Percy Ince.

*Sixth Division.* Girls—1. Annie McCaffry. 2. Mary A. Hayes.  
3. Susan McMullen.

WELLESLEY SCHOOL.

*Fifth Division.* Boys—1. G. A. Peacy. 2. James Rankin.  
3. Arthur Dinnis.

*Fifth Division.* Girls—1. Isabella Fraser. 2. Mary Spurling.  
3. Jennie Grenton.

*Sixth Division.* 1. Ashbury Smith. 2. Alexander Douglass.  
3. James Johnson.

*Seventh Division.* 1. Robert Ramsay. 2. Alfred Tucker. 3. Ada Dawkins.

*Eighth Division.* 1. Victor Blackhall. 2. Martha Ellis. 3. George Scott Adamson.

*Tenth Division.* 1. John Stalker. 2. Albert Arnott. 3. Fanny Heron.

## DUFFERIN SCHOOL.

*Fifth Division.* Boys—1. William Taylor. 2. George Wood. 3. Frank Hughes.

*Fifth Division.* Girls—1. Marion Best. 2. Annie Hastings. 3. Hannah Ryder.

*Sixth Division.* Boys—1. Alexander Hunter. 2. Albert Ebbles. 3. James Ardagh.

*Sixth Division.* Girls—1. Lottie C. Wiggins. 2. Jennie Woodland. 3. Elizabeth Hall.

## PARK SCHOOL.

*Fifth Division.* 1. Alice Grady. 2. Margaret Greer. 3. Louisa Moulder.

*Sixth Division.* 1. Maggie Barstow. 2. Clara Callow. 3. Alice Russell.

*Seventh Division.* 1. Susie Dee. 2. Ella Taylor. 3. Joseph Dobson.

*Eighth Division.* 1. Daniel Ferrier. 2. James Wilson. 3. Hattie Hawthorn.

*Ninth Division.* 1. Minnie Allen. 2. Jas. Priestly. 3. Annie Parsons.

*Tenth Division.* 1. Fred Matthews. 2. Alfred Fleming. 3. David Winslow.

*Tenth Division, Junior.* 1. James Armstrong. 2. Charles Pringle. 3. George Smart.

## GEORGE STREET SCHOOL.

*Fifth Division.* 1. Mary Whyte. 2. Charlotte Rogers. 3. Charles Lauder.

*Sixth Division.* 1. Kate Riddell. 2. Ella Rogers. 3. Ziporah Walters.

*Seventh Division.* 1. Donald Firstbrook. 2. George Grundle. 3. Lizzie Ashfield.

*Eighth Division.* 1. Mary I. Hart. 2. William Doughty. 3. Walter Greenfield.

Nin  
McCl  
Ten  
Maggi

Fifi  
3. Wi

Fifi  
A. Co

Sev  
Gibso

Eig  
Mabel

Nin  
3. Ep

Ten  
nah A

Fifi  
3. Ma

Fift  
3. Mi

Six  
Maggi

Sev  
Clayto

Eig  
Samue

Nin  
Charle

Ten  
3. Ha

3. Ha

Fift  
John 1

*Ninth Division.* 1. Maggie Hull. 2. Eliza Leef. 3. Sarah McCloskey.

*Tenth Division.* 1. Rebecca Peacock. 2. Elinor Jackson. 3. Maggie Morris.

## VICTORIA STREET SCHOOL.

*Fifth Division.* Boys—1. George Schube. 2. Harry Dower. 3. Wm. Payne.

*Fifth Division.* Girls—1. S. Brownlow. 2. A. Doughty. 3. A. Coleman.

*Seventh Division.* 1. Amy Purvis. 2. Addie Reed. 3. Donald Gibson.

*Eighth Division.* 1. Nina Hayden. 2. Effie McPherson. 3. Mabel Copping.

*Ninth Division.* 1. Charlotte Martin. 2. George Hammond. 3. Eppie Roden.

*Tenth Division.* 1. Lizzie Gibson. 2. John Brown. 3. Hannah Acton.

## LOUISA STREET SCHOOL.

*Fifth Division.* Boys—1. W. H. Argles. 2. Moses Haskins. 3. Malcolm McVeain.

*Fifth Division.* Girls—1. Eleanor Grant. 2. Lizzie Lennox. 3. Minnie Fair.

*Sixth Division.* 1. Joseph Gilmour. 2. Maggie Adams. 3. Maggie Irwin.

*Seventh Division.* 1. Mary Clow. 2. Louisa Derlin. 3. Betsey Clayton.

*Eighth Division.* 1. William West. 2. Louisa Budge. 3. Samuel Beckett.

*Ninth Division.* 1. Violet Spence. 2. Mary McEachren. 3. Charles Hall.

*Tenth Division.* 1. Willie Kennedy. 2. Josephine Holland. 3. Harold Andrews.

## JOHN STREET SCHOOL.

*Fifth Division.* Boys—1. Charles Duncan. 2. Colin Ross. 3. John McBeath.

*Fifth Division.* Girls—1. Lelia Nichol. 2. Jewell Pearson.  
3. Hattie Morell.

*Seventh Division.* 1. Martha Rankin. 2. William Banks. 3.  
Emily Brasier.

*Eighth Division.* 1. Jessie McConnell. 2. William Brown. 3.  
Annie Smith.

*Ninth Division.* 1. Fannie Morell. 2. Harry Lillie. 3. Em-  
ma Adams.

*Tenth Division.* 1. Kate Seymour. 2. Lelia Doudiet. 3.  
Harry Hassard.

PHOEBE STREET SCHOOL.

*Fifth Division.* 1. E. McDowell. 2. J. Pearmon. 3. J.  
Hozack.

*Sixth Division, Senior.* 1. John McFarlane. 2. Robert Hills.  
3. Agnes Spearman.

*Sixth Division, Junior.* 1. David Hilson. 2. Walter Crothers.  
3. William Gibson.

*Seventh Division.* 1. Grace Varcoe. 2. Charles Hurling. 3.  
Annie Thompson.

*Eighth Division, Senior.* 1. Minnie Manning. 2. Fred. Far-  
well. 3. Annie Rosenbloom.

*Eighth Division, Junior.* 1. Albert Charlesworth. 2. John  
Manderson. 3. Daisy Dean.

*Ninth Division, Senior.* 1. Kate Lewis. 2. Charles Low. 3.  
Rachel Rosenbloom.

*Ninth Division, Junior.* 1. Adam Smith. 2. George Mills.  
3. Nellie Miller.

*Tenth Division, Senior.* 1. Annie Parker. 2. Isaac Rooke. 3.  
Florence White. 4. Wm. Williams.

*Tenth Division, Junior.* 1. John White. 2. Minnie Harrison.  
3. James Sammons.

PALACE STREET SCHOOL.

*Fifth Division.* 1. Thomas Robertson. 2. Luke Patterson. 3.  
Albert Woods.

*Sixth Division.* 1. William Armstrong. 2. Henry Solomon.  
3. Maud Kiely.

*Eighth Division.* 1. Emma Martin. 2. Minnie Sharp. 3.  
Edward Kingston.

*Tenth Division.* 1. Nettie Feather. 2. Joseph Wasdale. 3.  
Frank Smith.

## PARLIAMENT STREET SCHOOL.

*Seventh Division.* 1. Emma Bell. 2. Maggie Harwood. 3.  
Frank Wells.

*Eighth Division.* 1. Minnie Medcalf. 2. Susie Reid. 3. Henry  
Coppin.

*Ninth Division.* 1. Edward Davis. 2. Eliza R. Senior. 3.  
Charlotte Williams.

*Tenth Division.* 1. Letitia Alexander. 2. William Ogilvy.  
3. Sarah Stevenson.

## WINCHESTER STREET SCHOOL.

*Seventh Division.* 1. Lizzie Scoley. 2. Walter E. Lugsdin. 3.  
William C. Hill.

*Eighth Division.* 1. Mary Way. 2. Ellie Sheppard. 3. Flor-  
ence Ginn.

*Ninth Division.* 1. David Benson. 2. Frank Pearson. 3. Lilian  
Bray.

*Tenth Division.* 1. Wm. H. Lugsdin. 2. Samuel F. Gilbert.  
3. Wm. Young.

## CHURCH STREET SCHOOL.

*Seventh Division.* 1. Arthur Virtue. 2. Albert Nord. 3.  
Harry Morse.

*Eighth Division.* 1. Arthur W. Bryan. 2. Arthur Anderson.  
3. Charles Morrison.

*Ninth Division.* 1. George Gilbert. 2. Randolph Jacobs. 3.  
Edward Hachborn.

*Tenth Division.* 1. Wallace W. Millichamp. 2. May E. Love.  
3. Jennie Gibson.



## ELIZABETH STREET SCHOOL.

*Seventh Division.* 1. Annie Sinkie. 2. Eliza Stanley. 3. Minnie E. Miller.

*Eighth Division.* 1. Maggie Beaumont. 2. Janet Coburn. 3. Emily Burner.

*Ninth Division.* 1. John Lamb. 2. Lizzie Little. 3. William Saunders.

*Tenth Division.* 1. Minnie Harradan. 2. Agnes Wills. 3. Thomas Shields.

## YORK STREET SCHOOL.

*Seventh Division.* 1. Jennie Lindsay. 2. Robert McGinnis. 3. Frank Martin.

*Ninth Division.* 1. Georgina Robson. 2. Sarah Starr. 3. James Bell.

*Tenth Division.* 1. Simon Starr. 2. Walter Halliday. 3. Charles Rogers. 4. Lydia Crewdin.

## BATHURST STREET SCHOOL.

*Seventh Division.* 1. Andrew Kitchener. 2. John Alexander. 3. Thomas Boyd.

*Eighth Division.* 1. George Meagher. 2. Annie Churchill. 3. John Heath.

*Ninth Division.* 1. Geo. McGill. 2. Annie Fulton. 3. Alex. Montgomery.

*Tenth Division.* 1. Walter E. Buddington. 2. Agnes Benson. 3. Nathaniel Taylor.

## NIAGARA STREET SCHOOL.

*Seventh Division.* 1. Daniel McPhee. 2. Maggie Galvin. 3. Mary A. Willett.

*Eighth Division.* 1. Stella Marples. 2. Fred. Prince. 3. John Morrison.

*Ninth Division.* 1. Mary Broom. 2. Florence Clark. 3. Ellen Bedson.

*Tenth Division.* 1. Ida McDonald. 2. James Thompson. 3. Elizabeth Willett.

## GIVINS STREET SCHOOL.

*Fifth Division.* 1. Alfred Dickenson. 2. Henrietta Mackenzie.  
3. Lizzie Rose.

*Sixth Division.* 1. Lizzie Barnett. 2. Wm. Hingston. 3. Eva Hingston.

*Eighth Division.* 1. Charles Dollery. 2. James Donovan. 3. Maude Dunford.

*Tenth Division.* 1. Aun J. Robson. 2. Lilly Barton. 3. John Browning.

## BORDEN STREET SCHOOL.

*Eighth Division.* 1. Wm. Bailey. 2. W. Raeside. 3. John Flux.

*Ninth Division.* 1. Eliza Aubin. 2. Walter Sanford. 3. Annie Gilkinson.

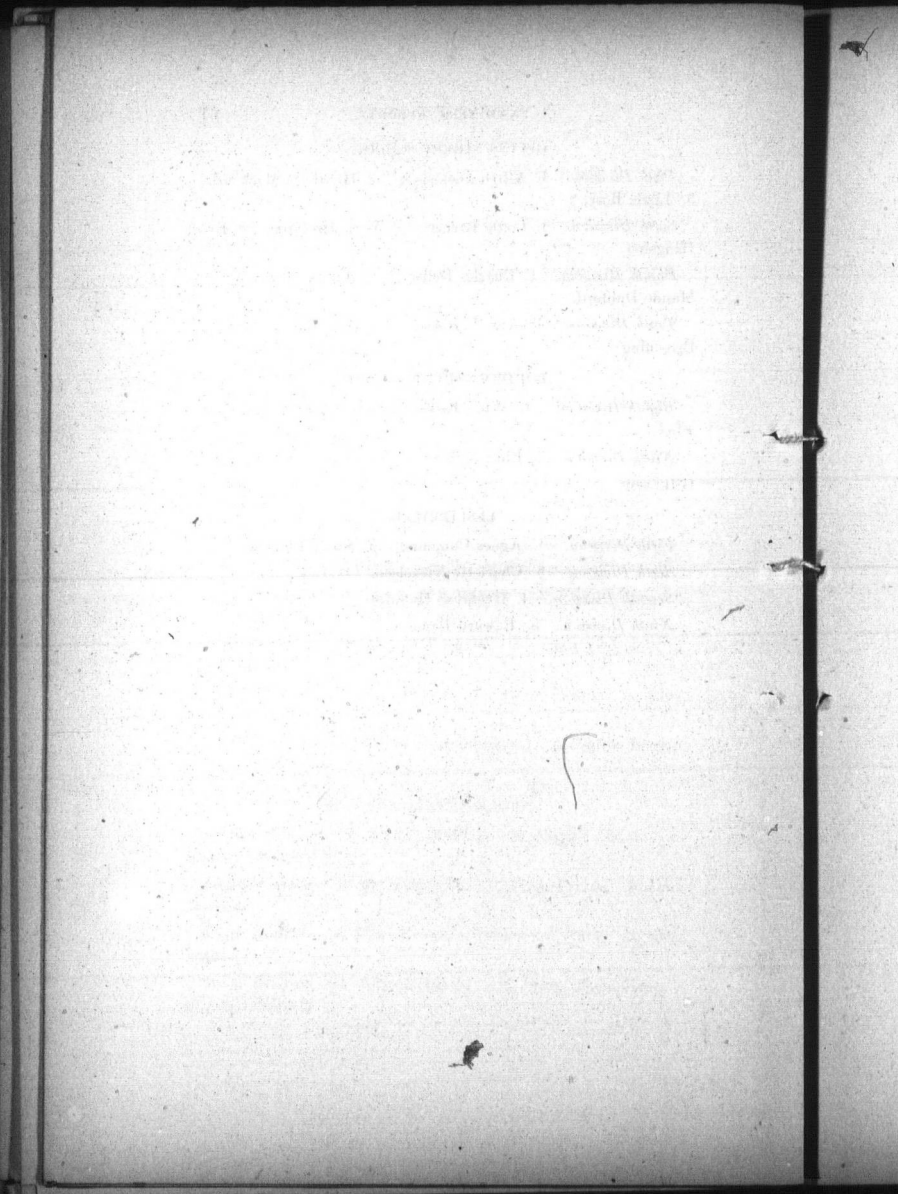
## LESLIEVILLE.

*Fifth Division.* 1. Agnes Cumming. 2. Stella Phillips.

*Sixth Division.* 3. Charlotte Nicholson.

*Seventh Division.* 4. Gustavus Hamilton.

*Ninth Division.* 5. Edward Blong.



Examination Papers.

*Th*

1.

2.

3.

4.

5.

6.

7.



# Examination Papers.

## COMBINED EXAMINATION.

### FIRST AND SECOND DIVISIONS.

#### ARITHMETIC AND MENSURATION.

*The First Division will take the last eleven questions of this paper, and the Second Division the first eleven questions.*

1. Divide 540 tons, 10 cwt., 3 qrs., 15 lbs., by 375.
2. How many seconds are there from 9 o'clock, A.M., on 13th January, 1876, to 16 minutes past 10 o'clock, P.M., on 27th June, 1877?
3. Reduce 3s. 6d. to the decimal of £7 10s.

4. Simplify 
$$3 + \frac{1}{4 + \frac{1}{5 + \frac{1}{8}}}$$

5. Reduce 1 ton, to lbs., oz., &c., Apothecaries' weight.

6. Simplify 
$$\frac{1}{3} + \frac{1}{4} + \frac{1}{5}$$
$$\frac{1}{3 \cdot 3} + \frac{1}{4 \cdot 4} + \frac{1}{5 \cdot 5}$$

7. If 6 men will dig a trench 30 yds. long and 8 yds. broad in six days of 16 hours each, in how many days of 12 hours each will 8 men dig a trench 40 yds. long and 16 yds. broad?

8. Divide the difference of 100 and  $\frac{1}{100}$  by the sum; and also the sum by the difference, and find the sum of the quotients.
9. What is the interest on \$757 60 for four years and four months, at  $6\frac{1}{2}$  per cent. ?
10. Find the difference in the expense of carpeting a room 24 ft. 9 in. long and 15 ft. 6 in. broad, with carpet  $\frac{3}{4}$  of a yard wide, at \$1.50 per yard, and with carpet  $\frac{7}{8}$  of a yard wide, at .70 per yard.
11. What will it cost to fence a circular field, whose radius is 58 ft. 4 in., with boards, at .90 per foot ?
12. A man sells a house for \$437.50, and loses  $12\frac{1}{2}$  per cent. on the original cost. What was the original cost ?
13. How many flag stones, each 2.88 ft. wide and 8.30 ft. long, are required to pave a walk round a grass plot 137.31 ft. long and 125.79 ft. wide, the walk being 4.15 yds. wide ?
14. A circle whose radius is 10 in., has a square inscribed and a square circumscribed. Find the area of the spaces enclosed between the circumscribed square and the circumference of the circle; and, also the area of the spaces enclosed between the circumference of the circle and the inscribed square.

---

### FIRST DIVISION.

#### ALGEBRA.

1. Simplify the following expression :

$$2x - [3y - \{4x - (5y - 6x - 7y)\}]$$

2. Multiply  $1 + 4x - 10x^2$  by  $1 - 6x + 3x^2$ .

3. Find the value of  $\frac{1}{x+a} - \frac{1}{x-a} + \frac{4a}{x^2-a^2} - \frac{2a}{x^2+a^2}$

4. Simplify the following expression :  $1 - \frac{1}{1 + \frac{1}{x}}$

5. Find the value of  $x$  when  $\frac{x}{2} + \frac{x}{3} - \frac{x}{4} + \frac{x}{5} = \frac{75}{6}$ .

6. Find the value of  $x$  when

$$x(x-a) + x(x-b) = 2(x-a)(x-b).$$

7. A cistern has two supply pipes, which will singly fill it in  $4\frac{1}{2}$  hours and six hours respectively; and it has also a leak by which it would be emptied in 5 hours: in how many hours will it be filled when all are working together?

---

## FIRST DIVISION.

### GEOMETRY.

1. What is an axiom? A postulate?
2. State the difference between a problem and a theorem.
3. Define the terms, an equilateral triangle, an isosceles triangle, a scalene triangle.
4. Prove that any two angles of a triangle are, together, less than two right angles.
5. From a given point draw a straight line equal to a given straight line.


---

## FIRST AND SECOND DIVISION.

### GEOGRAPHY.

1. Give the boundaries of the Dominion of Canada.
2. Name the different provinces of the Dominion, and the Capital of each.
3. Name the principal islands, bays, rivers and lakes of Ontario.
4. What are the chief exports of Ontario, and what cities are of the greatest commercial importance?
5. For what is British Columbia chiefly noted?

6. What are the exports of Labrador, and of the Hudson Bay Territory?
7. Have we any coal mines in British North America? If so, where?
8. Where does the sugar-cane of America chiefly grow?
9. What are the chief mineral centres of the United States?
10. What are the principal exports of Alaska?
11. Name the great mountain ranges of Europe, and the two largest rivers.
12. Sailing from London to Constantinople what straits, channels, seas, and principal islands on the way?
13. Give the four provinces of Ireland, with the chief seaport of each province.
14. Give the chief mountain ranges of Scotland, England and Wales. On what river is Glasgow situated? What groups of islands lie to the North and North-west of Scotland?
15. Give the boundaries of England, its principal seats of commerce, its chief exports, and state what Greenwich is noted for.

 The first ten questions for the Second Division, and the last ten for the First Division.

---

## FIRST DIVISION.

### HISTORY.

1. Name the Sovereigns of the Stuart period, and give the year in which each began to reign.
2. State the title of James VI of Scotland to the English throne, and give his character.
3. State the purport of the Petition of Rights, and the conduct of Charles in connection with it.

4. What was the nature of the struggle between Charles I and his Parliament? Give the names and dates of the battles fought during it. Indicate the character of Charles.
5. Give the principal events of English History during the Commonwealth.
6. What was the Act of Uniformity, and what was the result of its coming into operation?
7. To what conduct was the loss of the crown by James II due?
8. State what you know of Wentworth, Sir Walter Raleigh, Pym, Titus Oates, Ben Johnson, Marlborough.

## FIRST AND SECOND DIVISIONS.

### GRAMMAR.

1. (a) What is an inflexion? To what inflexions are verbs subject? What do these inflexions respectively indicate?  
 (b) Give the past tense and past participle of to tell, to flay, to slay, to lead, to tread, to do, to make, and state whether each verb is weak or strong.
2. What is a relative pronoun? How does it differ from a personal pronoun? Parse the words in italics in :  
 "The *beasts that roam* over the plain,  
 My *form* with indifference see."
3. What class of verbs may be put into the passive voice? Change all the verbs in the following sentence into the passive voice :  
 "The French attacked the squares again, but they did not make any impression on them."  
 How have the subjects and objects been affected by this change?
4. Point out the subject, predicate, and object, with their extensions, in the following :  
 "Through the trees I view the embattled tower,  
 hence all the music."



5. \* \* \* \* "I again perceive  
 The soothing influence of the wafted strains,  
 And settle in soft musings as I tread  
 The walk still verdant under oaks and elms,  
 Whose outspread branches overarch the glade."
- (a) Analyze the above extract.  
 (b) Parse each word in it once.  
 (c) Re-write it in prose form.

---

### FIRST AND SECOND DIVISIONS.

#### DERIVATION.

Define the following words, giving their derivation and the meaning of the roots :

Geography.  
 Commerce.  
 Daisy.  
 School.  
 Longitude.  
 Dandelion.  
 Archipelago.  
 Antipodes.  
 Peninsula.  
 Chivalry.

---

### FIRST DIVISION.

#### BOOK-KEEPING.

1. What is the object of Book-keeping ?
2. When is a Merchant insolvent ?
3. What is a Promissory Note ? Write out one for R. Jones, who promises to pay J. Brown One Hundred Dollars in three months.
4. In Double Entry what accounts show the assets and liabilities, losses and gains ?

5. What does the difference between the two sides of the Balance Account show?
6. Before closing Merchandise Account, what preparatory entry must be made, if the property is not all sold, before the closing entry can be made?
7. Give the order of closing the accounts in Double Entry.

### THIRD AND FOURTH DIVISIONS.

#### ARITHMETIC AND MENSURATION.

*The Third Division will take the last ten questions of this paper, and the Fourth Division the first ten questions.*

1. Write out Avoirdupois Weight and Square Measure.
2. Multiply £76 12s. 6½d. by 28.
3. Divide 325 lbs., 6 oz., 4 drs., 2 scr., by 37.
4. How long will it take a body moving at the rate of 20 miles an hour to reach a fixed star one billion of miles distant?
5. Reduce 18 mls., 3 fur., 10 per., to inches.
6. Define G. C. M. and L. C. M. of any two numbers.
7. Find the L. C. M. of 4, 6, 10, 12, 15, 16, 24, 25, 30, 36, 100.
8. Simplify  $15\frac{7}{8} + 7\frac{7}{10} + 2\frac{1}{2}$  of  $\frac{3}{10}$  of  $\frac{11}{12}$ .
9. "  $\left[ \frac{3}{7}$  of  $1\frac{1}{8}$  of  $\frac{14}{15} + 3\frac{1}{2}$  of  $2\frac{10}{21} - 2\frac{2}{3} \right] \times 3\frac{6}{7}$
10. If I pay  $\frac{1}{2}$  of my money, then  $\frac{1}{3}$  of what remains, and then  $\frac{1}{4}$  of what still remains, what fraction of the whole will be left?
11. Simplify  $\frac{3 - .15}{15 + 1.5} \times \frac{3 - 8}{1.9} \div \frac{1}{20}$

12. Express  $30769\frac{2}{3} \times 2.785714\frac{2}{7}$  as a vulgar fraction.
13. A gentleman has a bowling green 300 ft. long and 200 ft. broad, which he would raise one foot higher by means of the earth to be dug out of a ditch around it. It is required to find to what depth the ditch must be dug, its breadth being everywhere 8 feet.

---

### THIRD AND FOURTH DIVISIONS.

#### GRAMMAR.

1. With respect to kind, all words are divided into different classes: name these classes. How can you determine to which class any given word belongs?
2. Define word, inflexion, case.
3. What is analysis? Analyze the following sentence: "On the reception of his edict in Italy, they trembled for their domestic deities."
4. Parse every word of the sentence quoted in the last question.
5. Write down the past tense and past participle of the verbs, grind, hang, load, mow, shake, shut, spread, ring.
6. Decline the third personal pronouns, and also the relative who.

---

### THIRD AND FOURTH DIVISIONS.

#### GEOGRAPHY.

1. Name the three branches into which Geography is divided.
2. Define the following geographical terms:—Zenith, Nadir, Antipodes, Isothermal Lines, Equator, Circumference.
3. Tell what is the width of the Torrid Zone.

4. Give the definition of a Continent, an Island, an Archipelago, an Isthmus.
5. Give the boundaries and political divisions of North America.
6. Into what bodies of water do the St. Lawrence, Mississippi and Mackenzie rivers empty?
7. Name the different Provinces of the Dominion of Canada. Give the Capital of each.
8. What isthmus connects North and South America?
9. Where is Brazil to be found? What is its Capital? What river drains it?
10. Give the Capes on the East coast of North America.
11. What counties border on Lake Ontario? Give their county towns.
12. Name the cities of Ontario.
13. Describe a voyage from Toronto to the Manitoulin Island.
14. Name the principal islands of Ontario.
15. Give the principal bays, rivers, and lakes of Ontario.

The first ten questions for the Fourth Division, and the last ten for the Third Division.

---

### THIRD AND FOURTH DIVISIONS.

#### HISTORY.

1. When was Britain made a Roman Province, and by whom? Mention any circumstances connected with the Conquest.
2. Give the date of Alfred's reign, and state the principal benefits resulting from it to England.
3. State the particulars of the compilation called Doomsday Book, and of the institution of the Curfew-bell. In whose reign were they originated?

4. Give the names of the early Norman Kings, with the dates at which each began to reign.
5. In whose reign was Ireland first annexed to the crown of England, and who was the first King of Scotland who acknowledged himself a vassal of the English Crown?
6. Give the character of Edward I and the principal events of his reign.
7. Give the particulars of the battles of Crecy and Poitiers.



Time Table.

# TIME TABLE.

| DIVISIONS.  | TIME.                 | MONDAY.                 | TUESDAY.                | WEDNESDAY.              | THURSDAY.               | FRIDAY.                  |
|-------------|-----------------------|-------------------------|-------------------------|-------------------------|-------------------------|--------------------------|
| I.          | 9 - 10.15             | Arithmetic and Mens'n.  | Arithmetic and Mens'n.  | Arithmetic and Mens'n.  | Arithmetic and Mens'n.  | Arithmetic and Mens'n.   |
|             | 10.15 - 10.45         | Writing.                | Book-keeping.           | Writing.                | Book-keeping.           | Hygiene.                 |
|             | 11 - 11.30            | Algebra.                | Natural Philosophy.     | Algebra.                | Natural Philosophy.     | Hygiene.                 |
|             | 1.30 - 2.15           | Euclid.                 | Spelling and Dictation. | Euclid.                 | Dictation.              | Spelling and Dictation.  |
| 2.15 - 2.45 | Grammar and Compos'n. | Grammar and Compos'n.   | Grammar and Compos'n.   | Grammar and Compos'n.   | Grammar and Compos'n.   | History.                 |
| 3 - 3.30    | Reading (Scripture).  | Reading.                | Reading.                | Reading.                | Reading.                | Reading and Recitations. |
| 3.30 - 3.45 | Drawing.              | History.                | History.                | Drawing.                | Drawing.                | Geography.               |
| 3.45 - 4    | Music and Closing Ex. | Music and Closing Ex.   | Music and Closing Ex.   | Music and Closing Ex.   | Music and Closing Ex.   | Music and Closing Ex.    |
| II.         | 9 - 10.15             | Arithmetic and Mens'n.  | Arithmetic and Mens'n.  | Arithmetic and Mens'n.  | Arithmetic and Mens'n.  | Arithmetic and Mens'n.   |
|             | 10.15 - 10.45         | Writing.                | Book-keeping.           | Writing.                | Book-keeping.           | Writing.                 |
|             | 11 - 11.30            | Algebra.                | Natural Philosophy.     | Algebra.                | Natural Philosophy.     | Writing.                 |
|             | 1.30 - 2.15           | Grammar and Compos'n.   | Grammar and Compos'n.   | Grammar and Compos'n.   | Grammar and Compos'n.   | Dictation.               |
| 2.15 - 2.45 | Reading (Scripture).  | Reading.                | Reading.                | Reading.                | Reading.                | History.                 |
| 3 - 3.30    | Drawing.              | History.                | History.                | Drawing.                | Drawing.                | Reading and Recitations. |
| 3.30 - 3.45 | Music and Closing Ex. | Music and Closing Ex.   | Music and Closing Ex.   | Music and Closing Ex.   | Music and Closing Ex.   | Drawing.                 |
| 3.45 - 4    |                       |                         |                         |                         |                         | Music and Closing Ex.    |
| III.        | 9 - 10                | Arithmetic.             | Arithmetic.             | Arithmetic.             | Arithmetic.             | Arithmetic.              |
|             | 10 - 10.45            | Grammar.                | Grammar.                | Grammar.                | Grammar.                | Grammar.                 |
|             | 11 - 11.30            | Writing.                | Algebra.                | Writing.                | Mensuration.            | Hygiene.                 |
|             | 1.30 - 2.15           | History.                | Book-keeping.           | History.                | Writing.                | Writing.                 |
| 2.15 - 2.45 | Reading (Scripture).  | Reading.                | Reading.                | Reading.                | Reading.                | Reading and Recitations. |
| 3 - 3.30    | Drawing.              | Spelling.               | Spelling.               | Spelling.               | Spelling.               | Dictation.               |
| 3.30 - 3.45 | Drawing.              | Spelling.               | Drawing.                | Drawing.                | Drawing.                | Geography.               |
| 3.45 - 4    | Music and Closing Ex. | Music and Closing Ex.   | Music and Closing Ex.   | Music and Closing Ex.   | Music and Closing Ex.   | Music and Closing Ex.    |
| IV.         | 9 - 10.15             | Arithmetic.             | Arithmetic.             | Arithmetic.             | Arithmetic.             | Arithmetic.              |
|             | 10.15 - 10.45         | Writing.                | Writing.                | Writing.                | Writing.                | Writing.                 |
|             | 11 - 11.30            | Geography.              | Geography.              | Geography.              | Geography.              | Geography.               |
|             | 1.30 - 2              | Spelling.               | Dictation.              | Spelling.               | Dictation.              | Spelling.                |
| 2.15 - 2.45 | Grammar and Compos'n. | Grammar and Compos'n.   | Grammar and Compos'n.   | Grammar and Compos'n.   | Grammar and Compos'n.   |                          |
| 2.45 - 3    | History.              | History.                | History.                | History.                | History.                |                          |
| 3 - 3.30    | Reading (Scripture).  | Reading.                | Reading.                | Reading.                | Reading.                |                          |
| 3.30 - 3.45 | Drawing.              | Drawing.                | Drawing.                | Drawing.                | Drawing.                |                          |
| 3.45 - 4    | Music and Closing Ex. | Music and Closing Ex.   | Music and Closing Ex.   | Music and Closing Ex.   | Music and Closing Ex.   |                          |
| V.          | 9 - 10.15             | Arithmetic.             | Arithmetic.             | Arithmetic.             | Arithmetic.             | Arithmetic.              |
|             | 10.15 - 10.45         | Writing.                | Writing.                | Writing.                | Writing.                | Writing.                 |
|             | 11 - 11.30            | Geography.              | Geography.              | Geography.              | Geography.              | Geography.               |
|             | 1.30 - 2              | Spelling.               | Spelling.               | Spelling.               | Spelling.               | Spelling.                |
| 2.15 - 2.45 | Grammar.              | Reading.                | Reading.                | Reading.                | Reading.                |                          |
| 3 - 3.30    | History.              | Grammar.                | Grammar.                | Grammar.                | Grammar.                |                          |
| 3.30 - 3.45 | Drawing.              | History.                | History.                | History.                | History.                |                          |
| 3.45 - 4    | Music and Closing Ex. | Music and Closing Ex.   | Music and Closing Ex.   | Music and Closing Ex.   | Music and Closing Ex.   |                          |
| VI.         | 11 - 11.30            | Spelling.               | Dictation.              | Spelling.               | Dictation.              | Spelling.                |
|             | 11.30 - 12            | Geography.              | Geography.              | Geography.              | Geography.              | Geography.               |
|             |                       | For same as V Division. |                         |                         |                         |                          |
| VII & VIII. | 9 - 10                | Arithmetic.             | Arithmetic.             | Arithmetic.             | Arithmetic.             | Arithmetic.              |
|             | 10 - 10.45            | Spelling and Dictation. | Spelling and Dictation. | Spelling and Dictation. | Spelling and Dictation. | Spelling and Dictation.  |
|             | 11 - 11.30            | Writing.                | Writing.                | Writing.                | Writing.                | Writing.                 |
|             | 1.30 - 2              | Arithmetic.             | Arithmetic.             | Arithmetic.             | Arithmetic.             | Arithmetic.              |
| 2 - 2.45    | Geography.            | Geography.              | Geography.              | Geography.              | Geography.              |                          |
| 2.45 - 3    | Grammar.              | Grammar.                | Grammar.                | Grammar.                | Grammar.                |                          |
| 3 - 3.30    | Reading.              | Reading.                | Reading.                | Reading.                | Reading.                |                          |
| 3.30 - 3.45 | Drawing.              | Drawing.                | Drawing.                | Drawing.                | Drawing.                |                          |
| 3.45 - 4    | Music and Closing Ex. | Music and Closing Ex.   | Music and Closing Ex.   | Music and Closing Ex.   | Music and Closing Ex.   |                          |

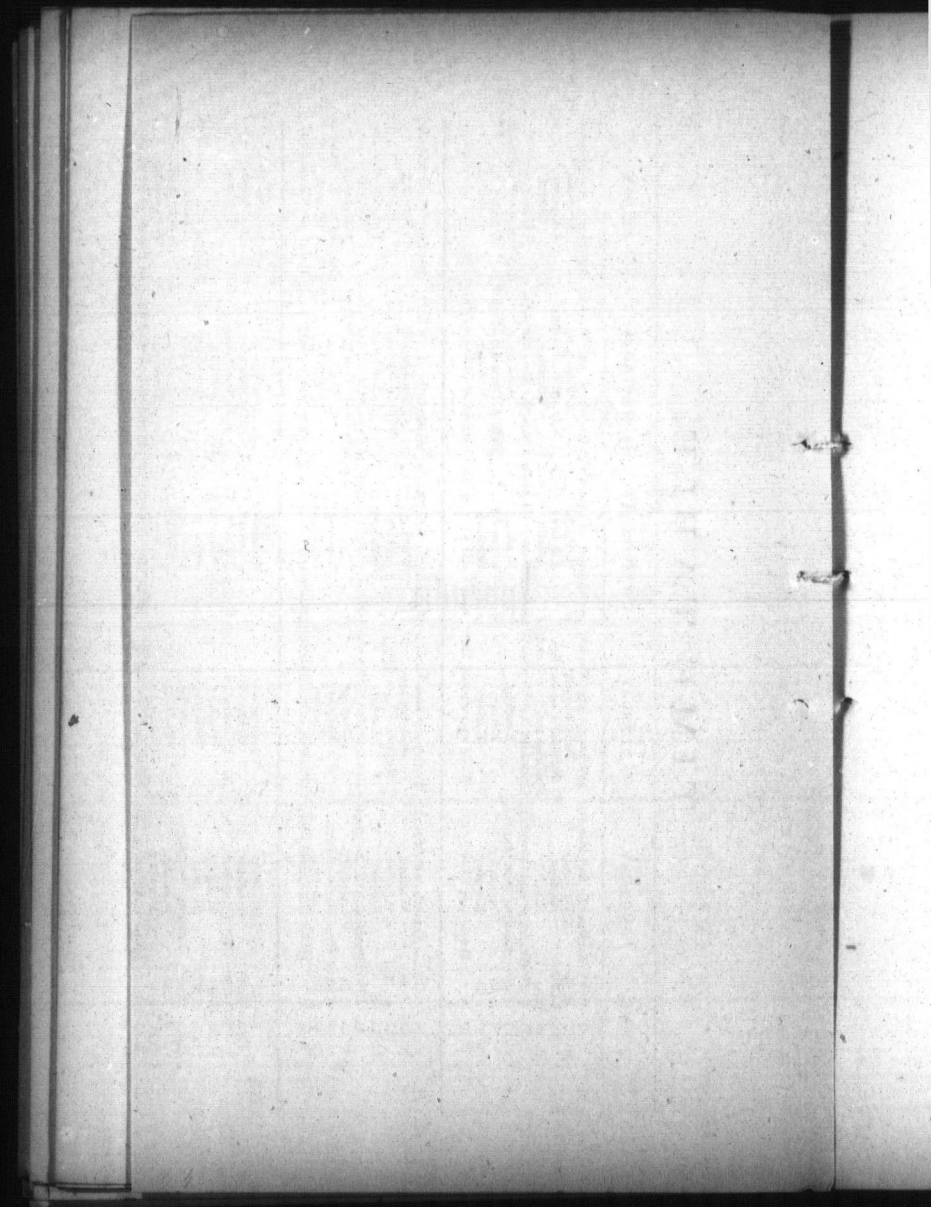
### IX.

|       |               |          |                       |
|-------|---------------|----------|-----------------------|
| TIME. | 9 - 10        | Each Day | Reading.              |
|       | 10 - 10.15    | "        | Spelling.             |
|       | 10.15 - 10.45 | "        | Object Lesson.        |
|       | 11 - 11.30    | "        | Geography.            |
|       | 11.30 - 12    | "        | Writing.              |
|       | 1.30 - 2.45   | "        | Reading.              |
|       | 2.45 - 3      | "        | Spelling.             |
|       | 3 - 3.30      | "        | Arithmetic.           |
|       | 3.30 - 3.45   | "        | Drawing.              |
|       | 3.45 - 4      | "        | Music and Closing Ex. |

### X.

|       |               |          |                       |
|-------|---------------|----------|-----------------------|
| TIME. | 9 - 10        | Each Day | Reading.              |
|       | 10 - 10.10    | "        | Singing.              |
|       | 10.10 - 10.30 | "        | Reading.              |
|       | 10.30 - 10.45 | "        | Mental Arithmetic.    |
|       | 11 - 11.30    | "        | Reading.              |
|       | 11.30 - 12    | "        | Arithmetic.           |
|       | 1.30 - 2.15   | "        | Reading.              |
|       | 2.15 - 2.25   | "        | Singing.              |
|       | 2.25 - 2.45   | "        | Object Lesson.        |
|       | 3 - 3.30      | "        | Geography.            |
|       | 3.30 - 3.45   | "        | Drawing.              |
|       | 3.45 - 4      | "        | Music and Closing Ex. |

NOTE.—Although *Mental Arithmetic* is only mentioned in the 10th Division, it is understood that the Teachers of all classes will devote a good deal of attention to this subject during the time allotted to *Arithmetic*.



Appendix.

Handwritten text, possibly a signature or name, centered on the page.





## APPENDIX.

|    |  |                     |
|----|--|---------------------|
|    | <i>Brought forward</i> .....   | \$95,710 44         |
| 5. | Premiums of Insurance :  |                     |
|    | British America Co.....  | \$124 80            |
|    | Western Co.....  | 88 00               |
|    | Isolated Risk Co.....  | 112 00              |
|    | Imperial Co.....   | 103 50              |
|    | Lancashire Co.....   | 98 60               |
|    | Queen City Co.....   | 145 00              |
|    | ✓ Liverpool and London and Globe Co  | 32 00               |
|    |  | 703 90              |
| 6. | Printing and Advertising, as per statement in detail. (See Appendix D.).....                                 | 658 45              |
| 7. | School Furniture, Stoves, Stationery and School Supplies, as per statement in detail. (See Appendix E.)..... | 1,496 86            |
| 8. | Miscellaneous Expenditure, as per statement in detail. (See Appendix F.).....                                | 899 22              |
| 9. | Cash on hand.....  | 225 73              |
|    | Total Expenditure.....   | \$99,694 60         |
|    | Balance to 1878.....   | 5,477 83            |
|    |  | <u>\$105,172 43</u> |

Certified,

W. C. WILKINSON,

Audited and Approved,

*Secretary.*

WM. ANDERSON,

January, 1878.

*Auditor.*

## APPENDIX A.

*Statement in detail of Expenditure on Account of New School Sites and School Buildings, from 31st December, 1876, to 31st December, 1877, given as one sum in Item No. 1, Annual General Statement.*

## DUFFERIN SCHOOL.

|   |            |
|---|------------|
| Daly Bros., balance of Contract for Carpenter Work                    | \$800 00   |
| " Extras .....  | 263 00     |
| J. Bilton, balance of Contract for Painters' and Glaziers' Work ..... | 375 00     |
| J. Bilton, Extras .....   | 146 55     |
| G. Watson, Balance of Contract for Galvanized Iron Work .....         | 67 00      |
| <i>Carried forward</i> .....  | \$1,671 55 |

## APPENDIX.

5

|  |            |            |
|--|------------|------------|
| <i>Brought forward</i> .....   | \$1,671 55 |            |
| G. Watson, Extras .....  | 7 20       |            |
| R. Rennie, balance of Contract for Slaters' Work ...                 | 144 00     |            |
| J. Ritchie & Son, balance of Contract for Plumbers' Work .....       | 33 00      |            |
| J. Ritchie & Son, Extras .....                                       | 4 10       |            |
| Langley, Langley & Burke, on account of Architects' Commission ..... | 500 00     |            |
|  | <hr/>      | \$2,359 85 |

## RYERSON SCHOOL.

|  |            |          |
|--|------------|----------|
| T. W. Greaves, balance of Contract for Masoury Work .....              | \$1,945 00 |          |
| T. W. Greaves, Extras.....   | 49 01      |          |
| T. & W. Clements, balance of Contract for Carpenters' Work .....       | 1,494 00   |          |
| T. & W. Clements, Extras .....   | 454 70     |          |
| J. Dill, balance of Contract for Painters' and Glaziers' Work.....     | 786 00     |          |
| J. Dill, Extras .....  | 123 16     |          |
| Balmer Bros., balance of Contract for Plasterers' Work .....           | 243 00     |          |
| Balmer Bros., Extras.....  | 15 00      |          |
| Douglas Bros, balance of Contract for Galvanized Iron Work .....       | 240 00     |          |
| Douglas Bros., Extras .....  | 49 24      |          |
| G. Duthie, balance of Contract for Slaters' Work ...                   | 55 00      |          |
| G. Harding, balance of Contract for Plumbers' Work                     | 76 00      |          |
| E. Beckett, balance of Contract for Iron Work.....                     | 147 00     |          |
| Champ & Cowan, on account of Contract for Felt Roofing.....            | 57 50      |          |
| Thomas Goodman, Contract for Wire Guards .....                         | 57 00      |          |
| R. Sewell, Stoves for ventilating purposes .....                       | 30 00      |          |
| Stewart & Strickland, balance in full for Architects' Commission ..... | 718 20     |          |
|  | <hr/>      | 6,539 81 |

## WELLESLEY SCHOOL.

|  |          |            |
|--|----------|------------|
| Smith & Mahaffey, balance of Contract for Painters' and Glaziers' Work ..... | 283 00   |            |
| Smith & Mahaffey, Extras .....   | 3 00     |            |
| J. Poucher, balance of Contract for Plasterers' Work                         | 57 00    |            |
| H. Cooley, balance of Contract for Galvanized Iron Work .....                | 50 00    |            |
| H. Cooley, Extras.. .....  | 55 00    |            |
|  | <hr/>    |            |
| <i>Carried forward</i> .....   | \$448 00 | \$8,899 66 |

|   |          |            |
|---|----------|------------|
| <i>Brought forward</i> .....                              | \$448 00 | \$8,899 66 |
| J. Duthie, balance of Contract for Slaters' Work ...      | 69 00    |            |
| R. Dinnis, extra Carpenters' Work .....                   | 64 39    |            |
| W. J. Gibson, for Water Pipe.....                         | 90 00    |            |
| McCaw & Lennox, on account of Architects' Commission..... | 210 00   |            |
|   | <hr/>    | 881 39     |

## GIVINS STREET SCHOOL.

|  |        |          |
|--|--------|----------|
| G. Burry, balance of Contract for Carpenters' Work                           | 525 00 |          |
| G. Burry, Extras .....   | 114 47 |          |
| Smith & Mahaffey, balance of Contract for Painters' and Glaziers' Work ..... | 233 00 |          |
| Smith & Mahaffey, Extras .....   | 3 50   |          |
| Hynes & Bros., Junior, balance of Contract for Pasterers' Work.....          | 83 20  |          |
| Douglas Bros., balance of Contract for Galvanized Iron Work .....            | 45 00  |          |
| Douglas Bros., Extras .....  | 6 00   |          |
| E. Beckett, balance of Contract for Iron Work .....                          | 100 00 |          |
| Champ & Cowan, balance of Contract for Felt Roofing .....                    | 34 00  |          |
| N. L. Piper & Sons, Registers .....  | 45 00  |          |
| C. Bovaird, Wood Sheds.....  | 121 00 |          |
| Stewart & Strickland, balance of Architects' Commission.....                 | 139 80 |          |
|  | <hr/>  | 1,449 97 |

## LEGAL EXPENSES, SCHOOL FURNITURE, LIGHTNING RODS, &amp;c.

|  |          |                         |
|--|----------|-------------------------|
| W. B. McMurrich, Solicitor's Fees .....  | 75 75    |                         |
| J. B. Pilkey, Lightning Rods for all the New Schools                           | 867 00   |                         |
| R. Hay & Co., 700 School Desks and Seats, as per Contract .....                | 2,940 00 |                         |
| R. Hay & Co., Teachers' Desks, as per Contract ...                             | 144 00   |                         |
| R. Hay & Co., Furniture, Chairs, Tables, &c.....                               | 103 33   |                         |
| C. Potter, School Desks and Seats, as per Contract                             | 2,205 76 |                         |
| J. Carlyle, Teachers' Desks, as per Contract .....                             | 144 00   |                         |
| W. G. Storm, balance of Architect's Commission for Schools Erected, 1875 ..... | 71 47    |                         |
|  | <hr/>    | 6,551 31                |
| Total of Item, No. 1.....  |          | <hr/> <hr/> \$17,782 33 |

## APPENDIX B.

*Statement in detail for Repairs, Alterations and Improvements, at the several Schools during 1877, given as one sum in Item No. 2, in Annual General Statement.*

## GIVINS STREET SCHOOL.

|                                       |        |       |
|---------------------------------------|--------|-------|
| F. W. Unitt, Tinsmith Work.....       | \$3 25 |       |
| G. Leslie & Son, Trees.....           | 6 00   |       |
| G. McKirdy, Tree Boxes.....           | 6 60   |       |
| Smith & Mahaffey, Re-Glazing .....    | 90     |       |
| Plews & Kennedy, Repairs to Pump..... | 5 25   |       |
|                                       | <hr/>  | 22 00 |

## NIAGARA STREET SCHOOL.

|                                      |         |       |
|--------------------------------------|---------|-------|
| J. Smith, Plastering .....           | \$59 35 |       |
| M. Hozak, Repairs to Bell Tower..... | 7 35    |       |
| G. Leslie & Sons, Trees .....        | 11 00   |       |
| G. McKirdy, Tree Boxes.....          | 12 10   |       |
| F. W. Unitt, Tinsmith Work.....      | 4 95    |       |
| E. Merrett, Re-glazing .....         | 1 50    |       |
| G. Faircloth & Son, Re-glazing ..... | 1 20    |       |
|                                      | <hr/>   | 97 45 |

## ST. MARK'S SCHOOL.

|                                  |         |       |
|----------------------------------|---------|-------|
| C. Bovaird, Carpenter Work ..... | \$19 00 |       |
| E. Merrett, Re-glazing.....      | 8 50    |       |
|                                  | <hr/>   | 27 50 |

## MARKHAM STREET SCHOOL.

|                                  |         |       |
|----------------------------------|---------|-------|
| C. Bovaird, Carpenter Work ..... | \$26 00 |       |
| T. M. Buley, Re-glazing .....    | 26 50   |       |
|                                  | <hr/>   | 52 50 |

## BATHURST STREET SCHOOL.

|                                       |         |       |
|---------------------------------------|---------|-------|
| Plews & Kennedy, Repairs to Pump..... | \$ 2 50 |       |
| D. Buckingham, Whitewashing .....     | 15 50   |       |
| F. W. Unitt, Tinsmith Work.....       | 9 60    |       |
| E. Merrett, Re-glazing.....           | 1 80    |       |
|                                       | <hr/>   | 29 40 |

## BORDEN STREET SCHOOL.

|                                   |        |      |
|-----------------------------------|--------|------|
| W. Robins, Carpenters' Work ..... | \$1 50 |      |
|                                   | <hr/>  | 1 50 |

Carried forward..... \$230 35



Brought forward..... \$230 35

**PHIBEE STREET SCHOOL.**

|   |            |          |
|---|------------|----------|
| W. Forbes, Alterations, &c.....             | \$1,427 62 |          |
| McCaw & Lennox, Architects' Commission..... | 64 30      |          |
| E. Merrett, Re-glazing.....                 | 5 40       |          |
| W. Robins, Carpenter Work.....              | 25 75      |          |
|   |            | 1,523 07 |

**RYERSON SCHOOL.**

|                                     |         |       |
|-------------------------------------|---------|-------|
| W. Robins, Carpenter Work.....      | \$ 1 50 |       |
| F. W. Unitt, Tinsmith Work.....     | 14 60   |       |
| E. Merrett, Re-glazing.....         | 1 30    |       |
| Withrow & Hillock, Horse Posts..... | 2 00    |       |
|                                     |         | 19 40 |

**JOHN STREET SCHOOL.**

|   |         |        |
|---|---------|--------|
| Winsor & Woodley, Carpenters' Work.....   | \$66 69 |        |
| W. Robins, Carpenters' Work.....          | 3 85    |        |
| F. W. Unitt, Tinsmith Work.....           | 25 98   |        |
| G. Boxall, Tinsmith Work.....             | 6 10    |        |
| E. Merrett, Re-glazing.....               | 3 40    |        |
| James McLelland, Removing Night Soil..... | 44 08   |        |
|   |         | 150 10 |

**YORK STREET SCHOOL.**

|   |          |          |
|---|----------|----------|
| J. Stephens, removing Offices, Board Room, &c ... | \$387 56 |          |
| F. A. Bowden, Plastering ..                       | 76 00    |          |
| T. M. Woods, Blinds ..                            | 39 71    |          |
| Smith & Mahaffey, Painting &c.....                | 85 80    |          |
| John Kay, Carpets.....                            | 148 76   |          |
| R. Hay & Co., Offices and Board Room Furniture .. | 193 83   |          |
| M. Stunton, Papering Board Room.....              | 70 00    |          |
| D. S. Keith, Plumbing and Gas Fitting.....        | 170 72   |          |
| M. Hozais, Repairs to Gas Pipes.....              | 2 25     |          |
| W. Robins, Carpenters' Work.....                  | 1 35     |          |
| F. W. Unitt, Tinsmith Work.....                   | 2 05     |          |
| E. Merrett, Re-glazing.....                       | 1 85     |          |
| Beatty & Son, Whitewashing.....                   | 55 60    |          |
| Withrow & Hillock, Horse Posts.....               | 2 00     |          |
| E. Leadley, Wool Mat.....                         | 3 00     |          |
| W. H. Rice, Counter Railing.....                  | 8 33     |          |
| S. Merrett, Sodding, &c.....                      | 6 50     |          |
|   |          | 1,255 31 |

**LOUISA STREET SCHOOL.**

|                                      |         |       |
|--------------------------------------|---------|-------|
| J. Stephens, Carpenter Work.....     | \$40 67 |       |
| W. Robins, Carpenter Work ..         | 1 68    |       |
| J. McLelland, Removing Night Soil .. | 15 00   |       |
|                                      |         | 57 35 |

Carried forward..... \$3,235 58

## APPENDIX.

9

Brought forward..... \$3,235 58

## ELIZABETH STREET SCHOOL.

|                                  |         |       |
|----------------------------------|---------|-------|
| J. Stephens, Carpenter Work..... | \$32 18 |       |
| W. Robins, Carpenter Work.....   | 1 40    |       |
| W. Howes, Carpenter Work.....    | 12 00   |       |
|                                  | —       | 45 58 |

## WELLESLEY SCHOOL.

|                                     |          |        |
|-------------------------------------|----------|--------|
| G. Leslie & Son, Trees.....         | \$ 14 60 |        |
| J. Stephens, Flowers, &c.....       | 33 45    |        |
| Smith & Mahaffey, Re-glazing.....   | 9 00     |        |
| W. Robins, Carpenter Work.....      | 20 01    |        |
| Richards & Bros., Hose, &c.....     | 18 50    |        |
| R. Phillips, Whitewashing.....      | 16 00    |        |
| F. W. Unitt, Tinsmith Work.....     | 28 10    |        |
| J. Stephens, Carpenter Work.....    | 128 59   |        |
| C. Jacobs, Black-Boards.....        | 18 00    |        |
| Withrow & Hillock, Horse Posts..... | 2 00     |        |
|                                     | —        | 288 25 |

## CHURCH STREET SCHOOL.

|                                  |          |        |
|----------------------------------|----------|--------|
| J. Stephens, Carpenter Work..... | \$129 81 |        |
| F. A. Bowden, Plastering.....    | 43 53    |        |
| E. Merrett, Re-glazing.....      | 4 35     |        |
| R. Phillips, Whitewashing.....   | 16 00    |        |
|                                  | —        | 193 69 |

## VICTORIA STREET SCHOOL.

|   |            |          |
|---|------------|----------|
| H. Geraghty, Alterations, &c.....           | \$1,292 85 |          |
| J. Stephens, Carpenters' Work.....          | 217 03     |          |
| McCaw & Lennox, Architects' Commission..... | 64 30      |          |
| F. W. Unitt, Tinsmith Work.....             | 12 50      |          |
| W. Robins, Carpenters' Work.....            | 7 91       |          |
| E. Merrett, Re-glazing.....                 | 6 30       |          |
| I. Mundy, Carpenters' Work, &c.....         | 10 00      |          |
| E. H. Cook, Removing Night Soil.....        | 48 25      |          |
|   | —          | 1,659 14 |

## GEORGE STREET SCHOOL.

|                                      |          |        |
|--------------------------------------|----------|--------|
| R. Hull, Whitewashing, &c.....       | \$ 62 50 |        |
| S. Pettigrew, Carpenters' Work.....  | 160 82   |        |
| F. A. Bowden, Plastering.....        | 14 97    |        |
| E. H. Cook, Removing Night Soil..... | 103 66   |        |
| W. Robins, Carpenter Work.....       | 8 80     |        |
| E. Merrett, Re-glazing.....          | 69       |        |
|                                      | —        | 351 35 |

Carried forward..... \$5,773 59

Brought forward..... \$5,773 59

WINCHESTER STREET SCHOOL.

|                                      |         |        |
|--------------------------------------|---------|--------|
| G. Leslie & Son, Trees.....          | \$20 00 |        |
| G. McKirdy, Tree Boxes.....          | 22 00   |        |
| S. Pettigrew, Carpenter Work .....   | 17 77   |        |
| G. Faircloth & Son, Re-glazing ..... | 37 00   |        |
| W. Robins, Carpenter Work .....      | 5 23    |        |
|                                      |         | 102 00 |

PARLIAMENT STREET SCHOOL.

|                                 |         |       |
|---------------------------------|---------|-------|
| G. Leslie & Son, Trees.....     | \$ 7 00 |       |
| G. McKirdy, Tree Boxes.....     | 7 70    |       |
| W. Robins, Capenter Work.....   | 7 57    |       |
| A. Hamilton, Whitewashing ..... | 28 70   |       |
| E. Merrett, Re-glazing.....     | 60      |       |
|                                 |         | 51 57 |

DUFFERIN SCHOOL.

|                                       |         |        |
|---------------------------------------|---------|--------|
| G. Leslie & Son, Trees, &c.....       | \$41 20 |        |
| G. McKirdy, Tree Boxes.....           | 27 50   |        |
| J. Ritchie & Son, Hose, &c.....       | 18 50   |        |
| F. A. Bowden, Plastering .....        | 54 40   |        |
| G. Boxall, Tinsmith Work .....        | 2 20    |        |
| J. Coatsworth, Carpenters' Work ..... | 27 46   |        |
| G. Faircloth & Son, Re-glazing .....  | 9 50    |        |
| Withrow & Hillock, Horse Posts .....  | 2 00    |        |
| H. Faircloth, Re-glazing .....        | 5 00    |        |
|                                       |         | 187 76 |

PARK SCHOOL.

|                                      |         |        |
|--------------------------------------|---------|--------|
| J. Coatsworth, Carpenter Work.....   | \$95 65 |        |
| F. A. Bowden, Plastering .....       | 21 68   |        |
| G. Faircloth & Son, Re-glazing ..... | 29 75   |        |
| E. Meerett, Re-glazing.....          | 1 30    |        |
| W. Robins, Carpenter Work .....      | 3 81    |        |
| E. H. Cook, Removing Night Soil..... | 27 40   |        |
|                                      |         | 179 60 |

PALACE STREET SCHOOL.

|  |         |        |
|--|---------|--------|
| Plews & Kennedy, Repairs to Pump.....  | \$ 2 50 |        |
| A. Hamilton, Whitewashing .....        | 21 70   |        |
| E. H. Cook, Removing Night Soil.....   | 40 20   |        |
| J. T. Coatsworth, Carpenter Work ..... | 39 83   |        |
| J. Stephens, Carpenter Work .....      | 1 00    |        |
| W. Robins, Carpenter Work .....        | 5 64    |        |
|  |         | 110 87 |

Carried forward..... \$6,405 39

## APPENDIX.

11

|                             |         |                   |
|-----------------------------|---------|-------------------|
| Brought forward .....       |         | \$6,405 39        |
| LESLEVILLE SCHOOL.          |         |                   |
| T. Leonard, Re-glazing..... | \$1 00  |                   |
|                             |         | 1 00              |
| MISCELLANEOUS.              |         |                   |
| Sundry Small Repairs .....  | \$24 02 |                   |
| Sweeping Chimneys .....     | 13 60   |                   |
|                             |         | 37 62             |
| Total of Item, No. 2.....   |         | <u>\$6,444 01</u> |

## APPENDIX C.

*Statement in detail of Salaries of Officers, Teachers and Caretakers, paid during 1877, as given in one sum in Item No. 3, in Annual General Statement.*

## OFFICERS, &amp;c.

|   |            |            |
|---|------------|------------|
| James Hughes, Inspector.....                | \$1,700 00 |            |
| W. C. Wilkinson, Secretary .....            | 1,200 00   |            |
| John T. Thompson, Truant Officer.....       | 700 00     |            |
| William Anderson, Auditor .....             | 25 00      |            |
| W. N. Bigger, Messenger and Caretaker.....  | 500 00     |            |
| C. R. Woodland, " " .....                   | 322 50     |            |
| Four Examiners (Combined Examination) ..... | 160 00     |            |
| Twenty-one Caretakers .....                 | 3,060 18   |            |
|   |            | \$7,667 68 |

## MALE TEACHERS.

|                      |                |             |            |
|----------------------|----------------|-------------|------------|
| Richard Lewis        | First Division | \$1,000 00  |            |
| Samuel McAllister,   | " "            | 1,000 00    |            |
| Adam McDonald,       | " "            | 1,000 00    |            |
| Isaac J. Birchard,   | Second         | 867 00      |            |
| John Campbell,       | " "            | 898 50      |            |
| Levi Clark,          | " "            | 900 00      |            |
| Robert W. Doan,      | " "            | 900 00      |            |
| Martin Gill,         | " "            | 900 00      |            |
| Francis S. Spence,   | " "            | 900 00      |            |
| James Anderson,      | Third          | 850 00      |            |
| Samuel Coyne,        | " "            | 850 00      |            |
| Robert McCausland,   | " "            | 865 00      |            |
| Adam Morrison,       | " "            | 850 00      |            |
| Albert R. Pyne,      | " "            | 802 00      |            |
| Carried forward..... |                | \$12,582 50 | \$7,667 68 |

N

|                                     |                              |             |            |
|-------------------------------------|------------------------------|-------------|------------|
|                                     | <i>Brought forward</i> ..... | \$12,582 50 | \$7,667 68 |
| George Crane,                       | Fourth " .....               | 750 00      |            |
| R. T. Martin,                       | " " .....                    | 750 00      |            |
| G. K. Powell,                       | " " .....                    | 744 00      |            |
| W. Spotten,                         | " " .....                    | 750 00      |            |
| John Phillips,                      | " " .....                    | 750 00      |            |
| Henry Brown, Assistant Master ..... |                              | 850 00      |            |
| Andrew Hendry,                      | " .....                      | 850 00      |            |
| Peter G. Meldrum,                   | " .....                      | 832 00      |            |
| A. P. Perrin, Music Teacher .....   |                              | 325 00      |            |
| H. F. Sefton,                       | " .....                      | 325 00      |            |
|                                     |                              |             | 19,508 50  |

## FEMALE TEACHERS.

|   |          |
|---|----------|
| Miss C. M. Churchill, Head Mistress .....     | \$600 00 |
| " M. Buik, Senior Fifth Book Class.....       | 524 00   |
| " O. Dunn, " " .....                          | 525 00   |
| " M. J. Keown, " " .....                      | 524 00   |
| " S. Hamilton, Junior " .....                 | 500 00   |
| " C. Spotton, " " .....                       | 461 00   |
| " M. A. Worth, " " .....                      | 500 00   |
| " C. Fraser, Senior Fourth Book Class .....   | 499 00   |
| " E. Kennedy, " " .....                       | 475 00   |
| " S. McCreight, " " .....                     | 500 00   |
| " M. Sutherland, " " .....                    | 475 00   |
| " R. Thompson, " " .....                      | 500 00   |
| " E. A. Williams, " " .....                   | 500 00   |
| " M. Coyne, Junior " .....                    | 446 50   |
| " S. M. Hamilton, " " .....                   | 450 00   |
| " S. J. Hamilton, " " .....                   | 448 50   |
| " A. Kelloch, " " .....                       | 433 00   |
| " J. Rogers, " " .....                        | 500 00   |
| " G. Round, " " .....                         | 500 00   |
| " Annie Armstrong, Senior Third Book Class... | 425 00   |
| " Annie J. Cameron, " " .....                 | 425 00   |
| " Jessie Campbell, " " .....                  | 425 00   |
| Mrs. Annie Carey, " " .....                   | 424 50   |
| Miss J. A. Cruise, " " .....                  | 425 00   |
| " Helen Fraser, " " .....                     | 420 50   |
| " Emma Gray, " " .....                        | 424 00   |
| Mrs. E. A. Green, " " .....                   | 425 00   |
| Miss Emma Kennedy, " " .....                  | 425 00   |
| " Kate Lemon, " " .....                       | 423 00   |
| " Kate Scarlet " " .....                      | 423 00   |
| " Jane Smyth, " " .....                       | 500 00   |

*Carried forward*..... \$14,526 00 \$27,176 18



## APPENDIX.

13

|   |  |             |             |
|---|--|-------------|-------------|
| <i>Brought forward</i> .....                    |  | \$14,526 00 | \$27,176 18 |
| Mrs. Kate Stevenson, Senior Third Book Class .. |  | 417 50      |             |
| Miss Maria Woods, " " " " ..                    |  | 425 00      |             |
| Mrs. S. J. Arthurs, Junior " " " " ..           |  | 385 75      |             |
| " M. A. Fitzgerald, " " " " ..                  |  | 400 00      |             |
| Miss M. Fraser, " " " " ..                      |  | 398 00      |             |
| " C. Gray, " " " " ..                           |  | 425 00      |             |
| " Mary Gunn, " " " " ..                         |  | 400 00      |             |
| " P. Johnston, " " " " ..                       |  | 400 00      |             |
| Mrs. L. Leadley, " " " " ..                     |  | 398 00      |             |
| Miss S. McKenzie, " " " " ..                    |  | 398 50      |             |
| Mrs. K. Rowland, " " " " ..                     |  | 425 00      |             |
| Miss Amelia Sims " " " " ..                     |  | 399 00      |             |
| " Georgina Stokes, " " " " ..                   |  | 422 00      |             |
| " L. Wills, " " " " ..                          |  | 383 25      |             |
| " A. Chambers, Senior Second Book Class.....    |  | 375 00      |             |
| " A. Frisby, " " " " ..                         |  | 375 00      |             |
| " H. How, " " " " ..                            |  | 358 25      |             |
| " M. Hunter, " " " " ..                         |  | 375 00      |             |
| Mrs. E. Lilly, " " " " ..                       |  | 357 75      |             |
| Miss M. Newton, " " " " ..                      |  | 375 00      |             |
| Mrs. G. Riches, " " " " ..                      |  | 358 25      |             |
| Miss H. Somerville, " " " " ..                  |  | 375 00      |             |
| Mrs. J. N. Agnew, Junior " " " " ..             |  | 342 00      |             |
| " J. S. Balmer, " " " " ..                      |  | 331 75      |             |
| Miss E. J. Church, " " " " ..                   |  | 350 00      |             |
| " A. Freeman " " " " ..                         |  | 332 25      |             |
| " L. Lumsden, " " " " ..                        |  | 349 50      |             |
| Mrs. H. M. McDonald, " " " " ..                 |  | 350 00      |             |
| Miss I. Mearns, " " " " ..                      |  | 346 50      |             |
| " M. Riddell, " " " " ..                        |  | 350 00      |             |
| " A. Rowell, " " " " ..                         |  | 350 00      |             |
| " E. S. G. Scarlett, " " " " ..                 |  | 348 00      |             |
| " B. Sims, " " " " ..                           |  | 333 25      |             |
| " M. Smith, " " " " ..                          |  | 349 00      |             |
| " C. Watson, " " " " ..                         |  | 349 00      |             |
| " M. A. Westman, " " " " ..                     |  | 350 00      |             |
| " K. M. Allen, Senior First Book Class.....     |  | 324 00      |             |
| Mrs. A. F. Armour, " " " " ..                   |  | 321 75      |             |
| " C. Brechon, " " " " ..                        |  | 320 00      |             |
| Miss T. Carlyle, " " " " ..                     |  | 345 00      |             |
| Mrs. M. J. Charlton, " " " " ..                 |  | 325 00      |             |
| Miss A. A. Gray, " " " " ..                     |  | 307 75      |             |
| " J. Gunn, " " " " ..                           |  | 325 00      |             |
| <i>Carried forward</i> .....                    |  | \$30,252 00 | \$27,176 18 |

|                            |                              |             |             |
|----------------------------|------------------------------|-------------|-------------|
|                            | <i>Brought forward</i> ..... | \$30,252 00 | \$27,176 18 |
| Miss C. Jackson,           | Senior First Book Class..... | 324 50      |             |
| " L. Kahler,               | " " " ".....                 | 212 50      |             |
| Mrs. McBrien,              | " " " ".....                 | 350 00      |             |
| " McCuaig,                 | " " " ".....                 | 306 25      |             |
| Miss L. Payne,             | " " " ".....                 | 321 75      |             |
| " M. Sefton,               | " " " ".....                 | 325 00      |             |
| " L. Slater,               | " " " ".....                 | 306 25      |             |
| " H. Stamm,                | " " " ".....                 | 323 00      |             |
| Mrs. M. Steward,           | " " " ".....                 | 258 75      |             |
| Miss E. C. Thompson,       | " " " ".....                 | 325 00      |             |
| " R. L. Williams,          | " " " ".....                 | 322 00      |             |
| " M. Chadwick, Junior      | " " " ".....                 | 300 00      |             |
| " L. Foulds,               | " " " ".....                 | 300 00      |             |
| " L. Gellatly,             | " " " ".....                 | 295 00      |             |
| " G. Grant,                | " " " ".....                 | 325 00      |             |
| " E. R. Gray,              | " " " ".....                 | 296 50      |             |
| " S. Hagerty,              | " " " ".....                 | 298 00      |             |
| " L. Kessick,              | " " " ".....                 | 300 00      |             |
| " A. McIntyre,             | " " " ".....                 | 94 25       |             |
| " F. Martin,               | " " " ".....                 | 91 25       |             |
| " E. Sams,                 | " " " ".....                 | 300 00      |             |
| " A. Sefton,               | " " " ".....                 | 300 00      |             |
| " M. J. Shore,             | " " " ".....                 | 300 00      |             |
| " F. Sims,                 | " " " ".....                 | 43 00       |             |
| " M. F. Spence,            | " " " ".....                 | 70 00       |             |
| " M. Spence,               | " " " ".....                 | 81 25       |             |
| " L. S. Taylor,            | " " " ".....                 | 299 00      |             |
| " F. Thompson,             | " " " ".....                 | 299 50      |             |
| Mrs. S. E. Wallace,        | " " " ".....                 | 199 00      |             |
| Miss F. Woodhouse,         | " " " ".....                 | 223 50      |             |
| " Ida Phillips,            | " " " ".....                 | 204 00      |             |
| " E. Sturrock,             | " " " ".....                 | 62 50       |             |
| " M. Milne,                | " " " ".....                 | 62 50       |             |
| " B. Gunn, Drawing Teacher | .....                        | 500 00      |             |
| Occasional Teachers        | .....                        | 936 50      |             |
|                            |                              |             | \$39,807 75 |
|                            | Total of Item No. 3.....     |             | \$66,983 93 |

## APPENDIX.

15

## APPENDIX D.

*Statement in detail of Printing and Advertising, as given in one sum in Item No. 6, in Annual General Statement.*

|  |                 |
|--|-----------------|
| Globe, Advertising .....   | \$ 11 00        |
| Leader, " .....  | 10 50           |
| Mail, " .....  | 6 55            |
| Telegram, " .....  | 5 00            |
| Hill & Son, Printing fortnightly Minutes .....                             | 172 30          |
| "    Inspector's Annual Report .....                                       | 102 40          |
| "    Examination Papers, Notices, Circulars, and General<br>Printing ..... | 270 70          |
| Rolph, Smith & Co., Certificates of Honour .....                           | 80 00           |
| Total of Item, No. 6 .....   | <u>\$658 45</u> |

## APPENDIX E.

*Statement in detail of Item No. 7, in Annual General Statement, for School Furniture, Stoves, Stationery and School Supplies.*

|   |                   |
|---|-------------------|
| Hart & Rawlinson, Prize Books .....   | \$289 40          |
| R. A. Dredge, Stationery, &c .....  | 201 19            |
| R. Hay & Co., Chairs, Desks, Pointers, Map Poles, &c.....   | 138 43            |
| Rowsell & Hutchison, Stationery, &c.....  | 101 15            |
| F. W. Unitt, Blackleading Stoves, Varnishing Stove Pipes, Re-<br>placing Old Pipes, Zinc, &c., in all the Schools ..... | 212 98            |
| G. Boxall, Stoves, Pipes, &c., for Board Room and Offices .....   | 60 80             |
| "    Repairs to Stoves, &c., at Sundry Schools .....  | 30 40             |
| W. Sturrock, Stationery, &c .....   | 90 25             |
| People's Depository, Maps, Thermometers, &c.....  | 88 45             |
| P. Patterson, Hardware, &c.....   | 68 15             |
| W. L. MacGillivray, Stationery, &c .....  | 52 50             |
| Brown Bros., Registers .....  | 32 50             |
| London and Paris House, Clocks, &c.....   | 49 00             |
| C. Potter, Thermometers and Ink Wells .....   | 23 10             |
| R. McClain, Books for Boys and Girls' Home .....  | 18 86             |
| Adam Miller & Co., Penholders .....   | 11 04             |
| John Kay, Black-board Brush Covers .....  | 10 50             |
| J. Stephens, Repairs to Desks, &c .....   | 6 16              |
| Elliot & Co., Oxalic Acid .....   | 5 00              |
| S. Bancroft, Penholders .....   | 3 50              |
| Sundry Small Payments.....  | 3 50              |
| Total of Item, No. 7.....   | <u>\$1,496 86</u> |

## APPENDIX F.

*Details of Item No. 8, given as one sum in Annual General Statement of Receipts and Expenditure, viz.: Miscellaneous Expenditure.*

|   |                 |
|---|-----------------|
| Trustee Elections, Returning Officers' Fees, Rent of Polling Booths, &c ..... | \$316 70        |
| Entrance Examinations, Collegiate Institute .....                             | 156 10          |
| Expenses, Governor General's Visit, Illuminating Address, &c ...              | 25 00           |
| J. Bailey, Rent for School Room, Huron Street .....                           | 166 66          |
| People's Depository, for Library of Reference .....                           | 50 00           |
| Cartage of School Furniture, at sundry times .....                            | 18 65           |
| Cab Hire, Committees, &c .....  | 45 25           |
| Postage, Telegrams and Post Office Boxes.....                                 | 17 76           |
| Gas Account for year.....   | 23 60           |
| Sites and Buildings Committee, Expenses of Annual Visit to the Schools .....  | 30 90           |
| School Management Committee, do. ....   | 23 25           |
| Inspecting and Measuring Wood.....  | 8 50            |
| Janitor, Shaftesbury Hall.....  | 5 00            |
| Directory .....   | 2 50            |
| Cleaning Snow, at Lake View Avenue Lot .....                                  | 4 25            |
| Sundry Small Payments .....   | 5 10            |
| <b>Total of Item, No. 8 .....</b>   | <b>\$899 22</b> |

SECRETARY'S VALUATION OF SCHOOL  
PROPERTY.

*Secretary's Statement of the Estimated Value of the School Premises,  
Sites, Buildings, Furniture, &c., belonging to the Public School  
Board of the City of Toronto, at the 31st December, 1877.*

|                          |   |              |  |
|--------------------------|---|--------------|--|
| 1. WARD OF ST. DAVID—    |   |              |  |
|                          | The Park School .....                               | \$11,500 00  |  |
|                          | Parliament Street School .....                      | 13,000 00    |  |
|                          | Winchester Street School .....                      | 12,000 00    |  |
|                          | Dufferin School .....                               | 29,000 00    |  |
|                          |   | \$65,500 00  |  |
| 2. WARD OF ST. THOMAS—   |   |              |  |
|                          | George Street School .....                          | 11,000 00    |  |
| 3. WARD OF ST. LAWRENCE— |   |              |  |
|                          | Palace Street School .....                          | \$9,000 00   |  |
|                          | Lealievile School .....                             | 4,000 00     |  |
|                          |   | 13,000 00    |  |
| 4. WARD OF ST. JAMES—    |   |              |  |
|                          | Victoria Street School .....                        | \$15,000 00  |  |
|                          | Church Street School .....                          | 13,000 00    |  |
|                          |   | 28,000 00    |  |
| 5. WARD OF ST. GEORGE—   |   |              |  |
|                          | John Street School .....                            | 15,000 00    |  |
| 6. WARD OF ST. ANDREW—   |   |              |  |
|                          | York Street School, Offices and Board<br>Room ..... | \$20,000 00  |  |
|                          | Niagara Street School .....                         | 12,000 00    |  |
|                          |   | 32,000 00    |  |
| 7. WARD OF ST. JOHN—     |   |              |  |
|                          | Louisa Street School .....                          | \$12,000 00  |  |
|                          | Elizabeth Street School .....                       | 9,000 00     |  |
|                          | Wellesley School .....                              | 32,000 00    |  |
|                          |   | 53,000 00    |  |
|                          | Carried forward.....                                | \$217,500 00 |  |



|   |             |              |
|---|-------------|--------------|
| <i>Brought forward</i> .....                              |             | \$217,500 00 |
| 8. WARD OF ST. PATRICK—                                   |             |              |
| Phoebe Street School.....                                 | \$15,000 00 |              |
| Borden Street School .....                                | 6,500 00    |              |
| Ryerson School .....                                      | 30,000 00   |              |
|   | <hr/>       | 51,500 00    |
| 9. WARD OF ST. STEPHEN—                                   |             |              |
| Bathurst Street School.....                               | \$10,000 00 |              |
| Givins Street School.....                                 | 11,500 00   |              |
| School Site, Lake View Avenue.....                        | 3,000 00    |              |
|   | <hr/>       | 24,500 00    |
| Furniture, School Apparatus, &c., estimated at, say ..... |             | 22,500 00    |
|   | <hr/>       |              |
| Total.....  |             | \$316,000 00 |

TORONTO, Jan. 1878.

(Certified,)

W. C. WILKINSON,

*Secretary.*