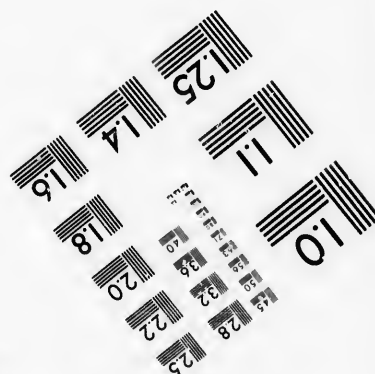
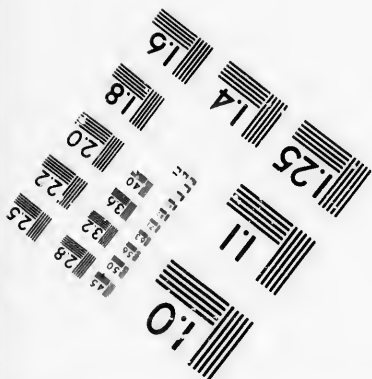
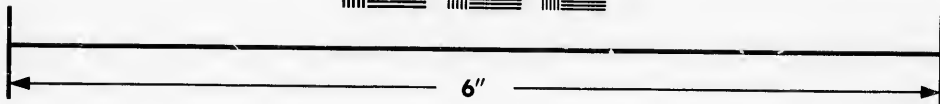
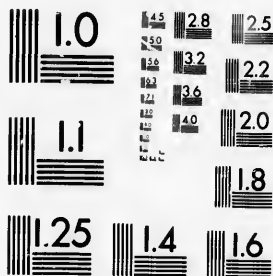


**IMAGE EVALUATION
TEST TARGET (MT-3)**



**Photographic
Sciences
Corporation**

23 WEST MAIN STREET
WEBSTER, N.Y. 14580
(716) 872-4503

**CIHM/ICMH
Microfiche
Series.**

**CIHM/ICMH
Collection de
microfiches.**



Canadian Institute for Historical Microreproductions / Institut canadien de microreproductions historiques

© 1986

Technical and Bibliographic Notes/Notes techniques et bibliographiques

The Institute has attempted to obtain the best original copy available for filming. Features of this copy which may be bibliographically unique, which may alter any of the images in the reproduction, or which may significantly change the usual method of filming, are checked below.

L'Institut a microfilmé le meilleur exemplaire qu'il lui a été possible de se procurer. Les détails de cet exemplaire qui sont peut-être uniques du point de vue bibliographique, qui peuvent modifier une image reproduite, ou qui peuvent exiger une modification dans la méthode normale de filmage sont indiqués ci-dessous.

- | | |
|--|--|
| <input type="checkbox"/> Coloured covers/
Couverture de couleur | <input type="checkbox"/> Coloured pages/
Pages de couleur |
| <input type="checkbox"/> Covers damaged/
Couverture endommagée | <input checked="" type="checkbox"/> Pages damaged/
Pages endommagées |
| <input type="checkbox"/> Covers restored and/or laminated/
Couverture restaurée et/ou pelliculée | <input type="checkbox"/> Pages restored and/or laminated/
Pages restaurées et/ou pelliculées |
| <input type="checkbox"/> Cover title missing/
Le titre de couverture manque | <input checked="" type="checkbox"/> Pages discoloured, stained or foxed/
Pages décolorées, tachetées ou piquées |
| <input type="checkbox"/> Coloured maps/
Cartes géographiques en couleur | <input type="checkbox"/> Pages detached/
Pages détachées |
| <input type="checkbox"/> Coloured ink (i.e. other than blue or black)/
Encre de couleur (i.e. autre que bleue ou noire) | <input checked="" type="checkbox"/> Showthrough/
Transparence |
| <input type="checkbox"/> Coloured plates and/or illustrations/
Planches et/ou illustrations en couleur | <input type="checkbox"/> Quality of print varies/
Qualité inégale de l'impression |
| <input type="checkbox"/> Bound with other material/
Relié avec d'autres documents | <input type="checkbox"/> Includes supplementary material/
Comprend du matériel supplémentaire |
| <input type="checkbox"/> Tight binding may cause shadows or distortion
along interior margin/
La reliure serrée peut causer de l'ombre ou de la
distorsion le long de la marge intérieure | <input type="checkbox"/> Only edition available/
Seule édition disponible |
| <input type="checkbox"/> Blank leaves added during restoration may
appear within the text. Whenever possible, these
have been omitted from filming/
Il se peut que certaines pages blanches ajoutées
lors d'une restauration apparaissent dans le texte,
mais, lorsque cela était possible, ces pages n'ont
pas été filmées. | <input type="checkbox"/> Pages wholly or partially obscured by errata
slips, tissues, etc., have been refilmed to
ensure the best possible image/
Les pages totalement ou partiellement
obscurcies par un feuillet d'errata, une pelure,
etc., ont été filmées à nouveau de façon à
obtenir la meilleure image possible. |
| <input checked="" type="checkbox"/> Additional comments: /
Commentaires supplémentaires: | [Printed ephemera] 1 sheet (verso blank) |

This item is filmed at the reduction ratio checked below/
Ce document est filmé au taux de réduction indiqué ci-dessous.

10X	12X	14X	16X	18X	20X	22X	24X	26X	28X	30X	32X
			✓								

The copy filmed here has been reproduced thanks to the generosity of:

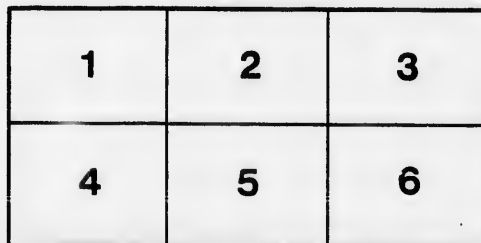
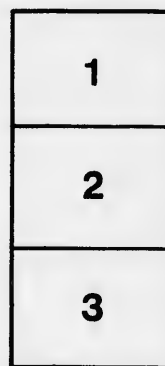
D. B. Weldon Library
University of Western Ontario
(Regional History Room)

The images appearing here are the best quality possible considering the condition and legibility of the original copy and in keeping with the filming contract specifications.

Original copies in printed paper covers are filmed beginning with the front cover and ending on the last page with a printed or illustrated impression, or the back cover when appropriate. All other original copies are filmed beginning on the first page with a printed or illustrated impression, and ending on the last page with a printed or illustrated impression.

The last recorded frame on each microfiche shall contain the symbol \rightarrow (meaning "CONTINUED"), or the symbol ∇ (meaning "END"), whichever applies.

Maps, plates, charts, etc., may be filmed at different reduction ratios. Those too large to be entirely included in one exposure are filmed beginning in the upper left hand corner, left to right and top to bottom, as many frames as required. The following diagrams illustrate the method:



L'exemplaire filmé fut reproduit grâce à la générosité de:

D. B. Weldon Library
University of Western Ontario
(Regional History Room)

Les images suivantes ont été reproduites avec le plus grand soin, compte tenu de la condition et de la netteté de l'exemplaire filmé, et en conformité avec les conditions du contrat de filmage.

Les exemplaires originaux dont la couverture en papier est imprimée sont filmés en commençant par le premier plat et en terminant soit par la dernière page qui comporte une empreinte d'impression ou d'illustration, soit par le second plat, selon le cas. Tous les autres exemplaires originaux sont filmés en commençant par la première page qui comporte une empreinte d'impression ou d'illustration et en terminant par la dernière page qui comporte une telle empreinte.

Un des symboles suivants apparaîtra sur la dernière image de chaque microfiche, selon le cas: le symbole \rightarrow signifie "A SUIVRE", le symbole ∇ signifie "FIN".

Les cartes, planches, tableaux, etc., peuvent être filmés à des taux de réduction différents. Lorsque le document est trop grand pour être reproduit en un seul cliché, il est filmé à partir de l'angle supérieur gauche, de gauche à droite, et de haut en bas, en prenant le nombre d'images nécessaire. Les diagrammes suivants illustrent la méthode.

GRAND + OPERA + HOUSE

LONDON, ONTARIO.

C. J. WHITNEY, Lessee.

A. E. ROOTE, Manager.

Programme, Thursday, Aug. 25th.

[1898]

E. D. STAIR submits

WARD & VOKES

IN THEIR LATEST ONE,

"THE GOVERNORS"

A VARIETY FARCE IN THREE ACTS.

PERSONS LIBELED.

The Governor of Idaho, by Percy	Happy Ward
The Governor of Oregon, by Harold	Harry Vokes
The Bell-Boy, by Rubber Neck	Johnny Page
The Bunco Man, by Keen S. Harper	Charles W. Young
Our Country Cousin, by J. Ott	John Keefe
Our Landlord, by Col. Peach	Hal. S. Stephens
Scorcher, by Rider Bike	James Cherry
Guests	Willie Stringer
Drummers	Bill Board
and	Mill Wauke
Bummers	Willie Wright
A Club Man, by a Policeman	John Loughlin
Lumber Merchant, by Willie Stick	Cyrus Riddell
Post Man, by Kerry Mail	Wm. B. Rock
An Old Settler, by Brig. Ham. Young	A. H. Scott
Ice Man, by Diamond Joe	H. W. Kelley
Cow Boy, by Wm. H. Bull	James Lewis
The Plot of the Play, Our	Dog "Boe"
The Giddy Girl, by Em. Peach	Louise Montrose
The Foolish Girl, by Edie Ott	Margaret Daly Vokes
The New Woman, by Winna Man	Emma Lewis
The Female Suffragist, by Mrs. Cap'Vour	Louise Kerline
The Society Girl, by Fay Tague	Nellie Daly
The Summer Girl, by May Knott	Sadie Whitcomb
The Female Barber, by Miss Muggs	Belle Lorraine
The Choir Singer, by Annie Price	Anna Hill
The Bicycle Girl, by Minn U. Vour	Lottie O'Neill
The Gum-Chewer, by Or A. Vour	Violet Wein
Miss Tandem, by A. Wheeler	Bessie Campbell
Job Lots, by Miss Fitts	Nina Walsh
Miss Star, by Tillie Twinkle	Leslie Lyle
Whirlwind, by Kittie Hurricane	Grace Mordaunt

During the action of "The Discord" the following specialties will be introduced.

ACT 1.—"Zizzy Ze Zum Zum," Nellie Daly, Sadie Whitcomb, Belle Lorraine, Anna Hill, Nina Walsh, Leslie Lyle. "Just One Girl," Louise Montrose and Company. "Conversation Waltz," Ward, Vokes, Margaret Daly Vokes and Nellie Daly. John Keefe, "Hey Rube," assisted by James Cherry. "Cinderella," Johnny Page and Louise Montrose, assisted by Nellie Daly, Louise Kerline, Sadie Whitcomb, Belle Lorraine, Leslie Lyle, Anna Hill, Nina Walsh. The Boston Quartette. "The Way Duffy Used to Call," Ward, Vokes and Company.

Job Lots, by Miss Fitts..... Nina Walsh
 Miss Star, by Tillie Twinkle... Leslie Lyle
 Whirlwind, by Kittie Hurricane..... Grace Mordaunt

During the action of "The Discord" the following specialties will be introduced.

ACT 1.—"Zizzy Ze Zum Zum," Nellie Daly, Sadie Whitcomb, Belle Lorraine, Anna Hill, Nina Walsh, Leslie Lyle. "Just One Girl," Louise Montrose and Company. "Conversation Waltz," Ward, Vokes, Margaret Daly Vokes and Nellie Daly. John Keefe, "Hey Rube," assisted by James Cherry. "Cinderella," Johnny Page and Louise Montrose, assisted by Nellie Daly, Louise Kerline, Sadie Whitcomb, Belle Lorraine, Leslie Lyle, Anna Hill, Nina Walsh. The Boston Quartette. "The Way Duffy Used to Call," Ward, Vokes and Company.

ACT 2.—"Mayme Green" and "I Want to Be a Soldier," by Johnny Page and Louise Montrose.

ACT 3.—Margaret Daly Vokes and John Keefe in a comic hymn, "The Baby on the Shore." Ward and Vokes' famous specialty, "Percy and Harold." La Petite Danseuse, Nellie Daly, in "La Vogue." "I'll Be Satisfied," and "He Wouldn't," by Charles W. Young. Louise Montrose will sing some songs.

The Bicycle used in this performance is furnished by the Viking Mnf. Co., Toledo, Ohio.

SYNOPSIS:

ACT 1.—Scene—Exterior summer hotel. Time, twilight. Temperature, normal.

ACT 2.—Scene—Hotel office. Any old time. Temperature, blood heat.

ACT 3.—Scene—Parlor in Winna Man's mansion. Just in time. Temperature, Klondike fever.

EXECUTIVE STAFF.

GEO. E. RAYMOND,..... Manager
 CHAS. R. STURGES Business Manager
 CHAS. A. PRINCE Musical Director
 JAMES LEWIS..... Carpenter
 CYRUS RIDDELL..... Property Master

NEXT ATTRACTION! TWO SOLID WEEKS,
 COMMENCING AUG. 29th.

... GERTRUDE KIMBERLY...

AND

The Metropolitan Opera Company

40--PEOPLE--40

**MATINEES--10 CENTS-- TUESDAYS, THURSDAYS
 AND SATURDAYS.**

NIGHTS--10, 20 & 30--NO HIGHER.

"The Ravishing Bliss of a Lover's First Kiss"

is the only adequate illustration of the delicious satisfaction
 that is afforded the user of

P. J. WATT'S PURE WINE

There are other wines sold in London, but the old NATIVE PORT manufactured by P. J. Watt has the same invigorating effect to the stomach as a shower bath has on a tramp.

1886, 90c. VINTAGE 1895, \$1.00 PER GALLON.

42 Richmond Street. Next News Office.

Advertiser Job Dept.

