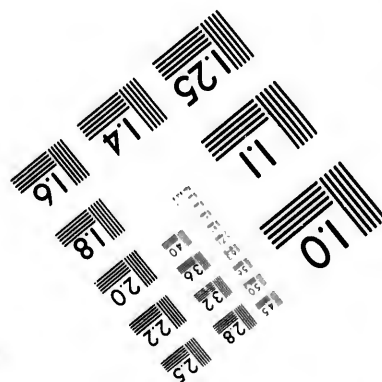
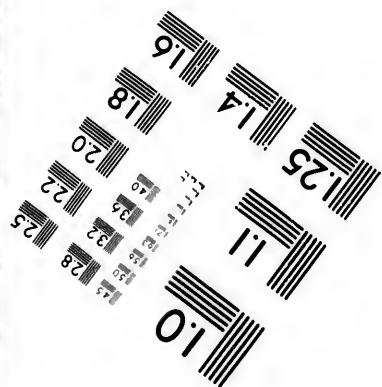
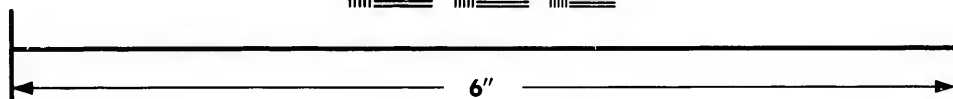
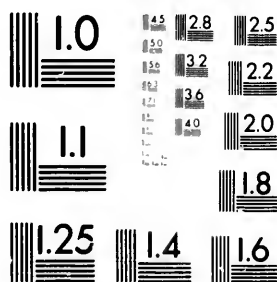


IMAGE EVALUATION TEST TARGET (MT-3)



Photographic
Sciences
Corporation

23 WEST MAIN STREET
WEBSTER, N.Y. 14580
(716) 872-4503

**CIHM/ICMH
Microfiche
Series.**

**CIHM/ICMH
Collection de
microfiches.**



Canadian Institute for Historical Microreproductions / Institut canadien de microreproductions historiques

© 1981

Technical and Bibliographic Notes/Notes techniques et bibliographiques

The Institute has attempted to obtain the best original copy available for filming. Features of this copy which may be bibliographically unique, which may alter any of the images in the reproduction, or which may significantly change the usual method of filming, are checked below.

L'Institut a microfilmé le meilleur exemplaire qu'il lui a été possible de se procurer. Les détails de cet exemplaire qui sont peut-être uniques du point de vue bibliographique, qui peuvent modifier une image reproduite, ou qui peuvent exiger une modification dans la méthode normale de filmage sont indiqués ci-dessous.

- ☒ Coloured covers/
Couverture de couleur
- ☐ Covers damaged/
Couverture endommagée
- ☐ Covers restored and/or laminated/
Couverture restaurée et/ou pelliculée
- ☐ Cover title missing/
Le titre de couverture manque
- ☐ Coloured maps/
Cartes géographiques en couleur
- ☐ Coloured ink (i.e. other than blue or black)/
Encre de couleur (i.e. autre que bleue ou noire)
- ☐ Coloured plates and/or illustrations/
Planches et/ou illustrations en couleur
- ☐ Bound with other material/
Relié avec d'autres documents
- ☐ Tight binding may cause shadows or distortion
along interior margin/
La reliure serrée peut causer de l'ombre ou de la
distortion le long de la marge intérieure
- ☐ Blank leaves added during restoration may
appear within the text. Whenever possible, these
have been omitted from filming/
Il se peut que certaines pages blanches ajoutées
lors d'une restauration apparaissent dans le texte,
mais, lorsque cela était possible, ces pages n'ont
pas été filmées.
- ☐ Additional comments:/
Commentaires supplémentaires:

- ☐ Coloured pages/
Pages de couleur
- ☐ Pages damaged/
Pages endommagées
- ☐ Pages restored and/or laminated/
Pages restaurées et/ou pelliculées
- ☒ Pages discoloured, stained or foxed/
Pages décolorées, tachetées ou piquées
- ☐ Pages detached/
Pages détachées
- ☐ Showthrough/
Transparence
- ☐ Quality of print varies/
Qualité inégale de l'impression
- ☐ Includes supplementary material/
Comprend du matériel supplémentaire
- ☐ Only edition available/
Seule édition disponible
- ☐ Pages wholly or partially obscured by errata
slips, tissues, etc., have been refilmed to
ensure the best possible image/
Les pages totalement ou partiellement
obscurcies par un feuillet d'errata, une pelure,
etc., ont été filmées à nouveau de façon à
obtenir la meilleure image possible.

This item is filmed at the reduction ratio checked below/
Ce document est filmé au taux de réduction indiqué ci-dessous.

10X	12X	14X	16X	18X	20X	22X	24X	26X	28X	30X	32X
						<input checked="" type="checkbox"/>					

The copy filmed here has been reproduced thanks to the generosity of:

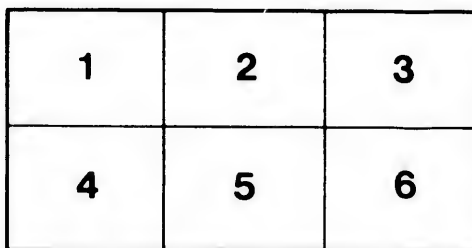
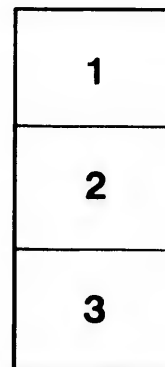
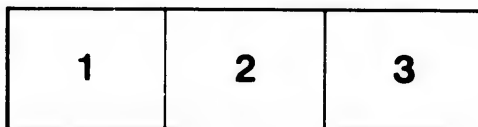
Library Division
Provincial Archives of British Columbia

The images appearing here are the best quality possible considering the condition and legibility of the original copy and in keeping with the filming contract specifications.

Original copies in printed paper covers are filmed beginning with the front cover and ending on the last page with a printed or illustrated impression, or the back cover when appropriate. All other original copies are filmed beginning on the first page with a printed or illustrated impression, and ending on the last page with a printed or illustrated impression.

The last recorded frame on each microfiche shall contain the symbol → (meaning "CONTINUED"), or the symbol ▼ (meaning "END"), whichever applies.

Maps, plates, charts, etc., may be filmed at different reduction ratios. Those too large to be entirely included in one exposure are filmed beginning in the upper left hand corner, left to right and top to bottom, as many frames as required. The following diagrams illustrate the method:



L'exemplaire filmé fut reproduit grâce à la générosité de:

Library Division
Provincial Archives of British Columbia

Les images suivantes ont été reproduites avec le plus grand soin, compte tenu de la condition et de la netteté de l'exemplaire filmé, et en conformité avec les conditions du contrat de filmage.

Les exemplaires originaux dont la couverture en papier est imprimée sont filmés en commençant par le premier plat et en terminant soit par la dernière page qui comporte une empreinte d'impression ou d'illustration, soit par le second plat, selon le cas. Tous les autres exemplaires originaux sont filmés en commençant par la première page qui comporte une empreinte d'impression ou d'illustration et en terminant par la dernière page qui comporte une telle empreinte.

Un des symboles suivants apparaîtra sur la dernière image de chaque microfiche, selon le cas: le symbole → signifie "A SUIVRE", le symbole ▼ signifie "FIN".

Les cartes, planches, tableaux, etc., peuvent être filmés à des taux de réduction différents. Lorsque le document est trop grand pour être reproduit en un seul cliché, il est filmé à partir de l'angle supérieur gauche, de gauche à droite, et de haut en bas, en prenant le nombre d'images nécessaire. Les diagrammes suivants illustrent la méthode.

rata
o
elure,
à

JOHN

FRANK

Company of Boston

MADE IN





INTRODUCTION.



In presenting my new Catalogue to the Trade I would state that I am constantly adding new and desirable styles of goods to my already very large assortment, and that I will spare no exertion to merit, by prompt attention, low prices, and the best goods, your entire confidence.

By a careful perusal you may find some goods that you may require, and as costs are constantly fluctuating and goods so varied I have sent no price list, but prices and full descriptions will be furnished on application.

As I import my goods direct from manufacturers in large quantities, I am therefore enabled to defy competition in the various lines of my business.

Please examine this Catalogue and favor me with a trial order.

Lamps and Lamp Chimnies and all fixtures is a special line of which I carry an immense stock.



A.

Ale Glasses.

B.

Bakers' White Granite, C.C., Yellow, Sponged, Blue and Gilt Edged, all sizes.

Basins Hand, in White Granite, C. C., Dipt, common painted, printed and gilt edge line, all sizes.

Blinds for Windows. Linen, Green, Buff or White, from 26 to 72 wide, and any length, either spring or ordinary rollers. Wide Shades for show windows made to order.

Blinds Cotton, Green or Buff, 3 by 6.

Burners, Nos. 0 or E, 1 or A, 2 or B, 3 or D, either Banner Fireside, and all the most improved styles. Also Silber Burners. See special list.

Brackets for Lamps, Walls, Clocks, Cages, Shades, etc.

Blanc Mange Moulds, C.C.

Binding for Carpet.

Bowls, White Granite, C.C., Dipt, Punch, printed, Pudding, C.C., Milk, Salad, Pressed Lip, Buff, etc.

Bowls, Glass, covered or uncovered, on foot, from 6 to 10 inches.

Bedsteads, Rosewood, Walnut, Maple, Pine, Cedar, etc. All sizes and heights.

Bed Fastenings, Jones' Patent.

Butter Dishes, Glass, frosted and engraved, and a variety of others.

Butter Dishes, White Granite and C.C.

Butter Coolers, fine engraved.

Butter Coolers, medium quality.

Butter Plates, White Granite and Glass; individual size.

Bitter Bottles, Plain, Cut and Pressed, with Britannia or Plated Tubes.

Bitter Tubes, only Britannia or Plated.

Bar Bottles, and all fixtures for Bars.

Bar Spoons, Electro Silver Plated.

Brushes, Shoe, Bannister, Varnish, Whitewash, Glue, Scrub, Hair, etc.

Bath Tubs for Birds, C.C. Glass and Opal.

Bed Pans, round and wedge shape.

Bottles, English Stone from 1 quart to 3 gallons.

Bottles, English Stone, cased, from 1 to 4 gallons.

Bolsters, best White Geese Feathers, Grey Geese do., Hair, Moss and Wool.

Bags, Manilla Hemp, with handles, 12, 14, 16 and 18 inches wide.

Buttons, Upholsterers', Terry, Haircloth, etc.

Burlaps, 40, 60 and 76 inch.

Bean Pots.

Burnt Umber, dry.

Brass for Cornices.

Bed Lace.

Bedroom Snites, Walnut, Pine, Maple, etc.

Bureaus.

Butter Jars, from 1 to 8 gallons, English and American.

Butts, small.

Brocatelle, Furniture covering.

Bread Plates, Glass, oval, round and oblong.

Bread Trays, Majolica and C.C. Ware.

Butter Boats and Stands.

Beefsteak Dishes.

Baskets, Market, Clothes, etc.

Bread and Butter Plates, China and C.C.

Brush Trays.

Bread Pans, Stoneware.

Beer Jugs, Stoneware.

Breakfast Services, China, Printed, etc.

Biscuit Boxes with Covers, Glass.

Beer Mugs.
 Bedroom Candlesticks.
 Brass Hand-Lamps.
 Bronze Stand Lamps.
 Baskets for Lamps and Chandeliers.
 Britannia Metal Covered Jugs.
 Britannia Ware.
 Butter Knives.
 Butcher Knives.
 Bread Knives.
 Bird Cages and Fixtures.
 Barber's Whisks.
 Beading for Cornices and Picture Framing.
 Bolster Tassels.
 Bordering.
 Blankets.
 Blinds for Windows.

C.

Chimnies for Lamps, Flint, Annealed, Lead Glass, La Bastie,
 Sand Blast, etc. This is one of my special lines for
 the Trade.
 Cups and Saucers. White Granite, C.C., Printed, China,
 Fancy, Motto, etc.
 Chambers. White Granite, C.C., Dipt and Yellow, covered
 and uncovered.
 Cruet Stands, complete in Britannia Metal, Sherwood's Wire
 and Rogers' Silver-Plated, etc.
 Cruet Bottles, extra.
 Chairs. All kinds. Cane or Wood seat ; also Gardner's
 Patent Perforated.
 Chair Seats, Perforated.
 Candy Jars, with Tin or Glass Lids and Rubber Bands, from
 1 quart to 1 gallon.

Confectioner's Urn Jars, on foot.

Chandeliers, 2, 3 and 4 lights, Extension or Stationary, in
French Bronze and assorted colors and patterns.

Carvers and Forks.

Castors for Chairs, Lounges, etc.

Castors for Bedsteads.

Candlesticks, Tin, Brass, Glass, China, etc.

Carpeting, Brussels, Tapestry, Kidderminster, Hemp, etc.

Carpet Binding.

Carpet Lining.

Cheese Plates and Stands.

Comports, White Granite and Glass.

Combs, Dressing, Rubber, Horn, etc.

" Folding, " "

Cages, Round, Square, etc.

Coverdishes.

Caspadores, Tin, Granite, Rockingham, White Stone, etc.

Cretone, for covering Furniture.

Cradles.

Card Trays, Papier Mache.

Caraffes and Ups.

Crumb Trays and Brushes.

Commodos.

Commode Buttons.

Cumbric.

Corkscrews, a full line.

Cream Jugs.

Comforters.

Celery Glasses.

Cigar Lighters.

Cornices.

Cornice Moulding.

Can Openers.

Custard Cups.

Cutlery, of every description.

Cups, for Lamps, Chandeliers, etc.

Casserles.

Comb Trays, White and Granite.
 Chair Pans.
 Colored Figures.
 Claret Glasses.
 Claret Jugs and Decanters.
 Cordial Glasses.
 Cocktail Glasses.
 Castor Bottles.
 Child's Wicker Chairs.
 Cocoa Matting, 3-4, 4-4, 5-4, 6-4, 8-4.
 Chromos.
 Cornice Brass.
 Curtain Holders.
 " Rings.
 " Bands.
 " Gimp.
 Curtains, made to order.
 Counterpanes.
 Cabinet Chairs.
 Counter Stools.
 Cateline, for Furniture covering.
 Cribs.
 Clothes Racks.
 Coat and Hat Hooks, Bronzed and Brass.
 Curled Hair, for Mattresses.
 Cat-tail, " "
 China, plain White and White with Gilt.

D.

Dishes, oval flat White Granite, from 4 to 20 inch.
 Dishes, China, 10 and 12 inch.
 Dishes, Glass, a great variety, oval and round.
 Dusters, Feather and Wool.
 Door Mats, Rattan, Cocoa, Wool Bordered, etc.

Decanters, Cut, Pressed, and Cut and Engraved.
 Decanters for Bars.
 Damasks, for Curtains or Furniture covering.
 Dinner Sets, Printed, for 12 persons.
 Drop Handles, Ebony and Gilt and Nickel.
 Dust Pans and Brushes.
 Down.
 Double Egg Cups.
 Dining Tables.
 Dish Covers.

E.

Ewers and Basins, White Granite, C.C., etc.
 Ewers only, " " "
 Epergnes, or Flower Stands.
 Enamel Cloth.
 Egg Cups, White China, etc.
 Egg Beaters, Patent Revolving.
 Eggs for nests, C.C. and Opal.
 Escutcheons, Walnut.
 Extenders for Lamp.
 Excelsior, for Upholstering.
 Eureka Hair, for Upholstering and Bedding.
 Egg Stands with Cups, 2, 3 and 4 hole.
 Egg Tumblers.

F.

Founts for Lamps, deep or flat.
 Forks, Table, Medium and Dessert.
 Filters.
 Filter Stands.

Frames for Pictures, Rustic and others.
 Flower Stands or Epernes.
 Foot Rests.
 Flower Pots, Majolica, Terra Cotta, etc.
 Flower Tubes, Fancy Engraved, etc.
 Feathers, best White from live Geese.
 Figures, common colored.
 Fringes, for Trimmings.
 Finger Bowls.
 Fish Globes.
 Furniture Fenders.
 Folding Chairs and Rockers.
 Fire Irons, sets of 3.
 Fruit Baskets, on foot, White Granite.
 Fruit Stands, Glass.
 Fruit Jars, (Mason's), for Preserving.
 Foot Baths, Stone.
 Fern Cases, Terra Cotta.
 Finishing Nails.
 Furniture, all descriptions.
 Fish Drainers.
 Feather Dusters.

G.

Globes for Lamps, a fine assortment.
 Globes for Lanterns.
 Glass for Picture Framing.
 Goblets, Pressed, Cut and Engraved.
 Gimps, Furniture and Curtain.
 Gimp Bands.
 Glue, No. 1, Santa Cruz.
 Gravy Dishes and Boats.
 Gilt Mouldings.
 Garden Edging.

H.

Holland for Shades, from 26 to 72 inches wide, Green, Buff
 and White.
 Hangers for Lamps.
 Holders for Lamp Shades.
 Horse-Hair, in Rope or Picked.
 Hock Glasses, colored.
 Horse-Radish Stands.
 Hat Racks.
 Hair Cloth.
 Hooks and Eyes, Brass.
 Hooks, Screw, bright Iron.
 Hooks, for Picture Moulding.
 Hand Basins.
 Honey Pots, C. C.
 Hot Water Plates.
 Hampers.
 Hearth Rugs.

I.

Illuminators, A and B Sun, B Sun Hinge, and B Drummond.
 Ink Tumblers, non-spilling.
 Ivory-Handled Cutlery.

J.

Jugs. White Granite, Stone White and Colored Printed,
 C.C., Majolica, Rockingham Glass, China, etc.
 Jugs, Metal covered, assorted.
 Jellies, for Preserves.
 Jellies, for Table.

Jars, Butter.

Jam Jars.

Jars, Mason's quarts and half gallons, self sealing.

Jute, Furniture covering.

Jelly Saucers, on foot.

Japanned Candlesticks.

" Tea Trays.

" Dust Pans.

" Pepper Boxes.

" Nutmeg Graters.

" Bird Cages.

Jaspar Flower Pots.

K.

Knives, Table and Dessert, with Bone and Ivory Handles.

" Table and Dessert, 1 piece, best solid Cast Steel,
Silver Plated.

" Butter, Pearl, Bone and Ivory Handled and Plated.

" Pocket, English and American.

" Butchers'.

" Bread.

Knives and Forks.

Knobs for Furniture.

Knapsacks.

Knife Rests, Glass and Wire.

L.

Lamps, all Glass, Hand and Stand.

" French Bronze, Verde Bronze, Electro and Verde,
Extra Gilt, Ebony and Gilt, and new styles.

- " Porcelain and Nickel finish.
- " Porcelain and Polished Brass finish.
- " Nickel Leader Student.
- " Hanging.
- " Bracket.
- " The celebrated Silber.

In Lamps I carry a very large stock, but it is impossible to describe the many new styles that I am constantly receiving. Order a sample lot.

Lamp Fixtures of all kinds.

Lamp Shades, Chimnies, Globes, etc.

Lanterns, Hurricane, Tubular, etc.

Lantern Globes.

Lusters with Drops.

Looking-Glasses, French, German, English and American.

Lounges, and made to order.

Lounge Feet, turned and carved.

Lamp Hooks.

Linoleum.

Ladles.

Linseed Oil, boiled.

Lemon Squeezers.

Lining for Walls.

Lipped Bowls.

Liquor Glasses.

Library Lamps.

Lamp Trimmers.

Lithographs.

Lounge Frames, Walnut.

M.

Mouldings, Picture, Room, Cornice, etc.

Samples furnished on application.

Mattresses, Hair, Moss, Wool, etc.

Mirrors.

Mugs.

Motto Mugs.

Motto Cups and Saucers.

Matting Cocoa, 3-4, 4-4, 5-4, 6-4 and 8-4 wide.

“ China.

Molasses Cans.

Mats, Table in Sets.

Mats, in-door and out.

Match Safes.

Moss.

Mustard Pots.

Metal Covered Jugs.

Majolica Ware.

Marble Top Furniture.

Milk Pans.

N.

Nails, Finishing.

“ Wire Upholsterers’.

“ Picture.

Nappies, Glass.

“ C.C., Round.

“ Oblong, Yellow.

Nut-Crackers, Steel and Electro Plated.

Needles, Upholsterers’ and Carpet.

Night Lamps.

Nest Eggs.

Nickel Plated Spoons, Forks, etc.

O.

Oilcloth.
 Oilcloth Squares.
 Ornaments for Mantelpieces.
 Oleographs.

P.

Plates, in White Granite, C.C., Printed, Painted, Gilt Edge
 China, etc.
 Pie Plates, Yellow.
 Pitchers, Glass, etc.
 " Stone and Stone China.
 Pictures and Frames.
 Picture Cord, Nails, Knobs, etc.
 Pillows, Feather, Wool, etc.
 Perambulators, Reversible and others.
 Pickle Dishes, Glass and Stone China.
 Pickle Jars, Glass.
 Pullies, for Shades.
 Pullies, for Awnings.
 Pendants, for Lamps.
 Pepper Bottles.
 Piano Stools.
 Pumice, Ground.
 Pegs, for Lamps.
 Papier Mache.
 Paperhangings.
 Plug Basins, for Washstands.
 Punch Bowls.
 Pipkins.
 Port Glasses.
 Pen Trays.

Picture Glass.
 Poles, for Windows.
 Pudding Bowls.
 Plant Markers.

R.

Rings for Curtains.
 Rings for Lamp Shades and Globes.
 Rockers, Cane and Wood Seat.
 Rollers and Slats for Shades.
 Reducers and Extenders for Lamps.
 Reflectors, Silvered Glass.
 Reps, for Curtains and Furniture.
 Raw Silks, for Furniture.
 Roller Ends.
 Roller Pins.
 Rice Dishes.
 Rustic Frames, all sizes.
 Rack Pullies.
 Roll Trays.
 Rockingham Ware.
 Ring Stands, Jasper Ware.

S.

Spoons, Iron, Steel, Nickel and Silver Plated, A 1, either
 Table, Medium, Dessert or Tea, etc.
 Spoons for Bars, Elcho Plated.
 Spoons, Mustard and Salt.
 Salt Cellars.

Shades for Lamps, Paper, Porcelain or Frosted and Sand
Blast Glass.

Shades for Windows, all sizes.

Shade Cord, White, Green, Red, Buff and Blue.

Salvers.

Stools, Cane and Wood Seat.

Screws.

Screw Eyes and Rings;

Screw Hooks.

Smoke Bells.

Sideboards.

Stair Rods.

Spittoons, White, Rockingham, Tin, etc.

Soaps and Trays.

Springs for Furniture.

Spring Twine.

Saucers.

Steels.

Sauce Boats.

Sugar Boxes, Glass and Earthenware.

Sugars and Creams.

Sets, Glass, 4 pieces.

Sets, Tea, Breakfast, Dinner, etc.

Screens, for back of Washstand.

Sauce Tonnereens.

Soup “

Spoon Holders.

Sleighs and Sleds for Children.

Stoneware, English and American.

Steak Beaters.

Sherry Glasses.

Salad Sets, Spoon and Fork.

Slop Jars.

Sponge Trays.

Spitting Pots and Mugs.

Sick Feeders.

Sunderland Ware.

Silver Luster Ware.
Slop Bowls, China.
Syrup Jugs.

T.

Tacks, Upholsterer', from 1 to 20 oz.
" Common Cut, from 4 to 16 oz.
" Brass Head, fancy.
Tumblers, Table and Bar, all kinds, Pressed and Cut.
Teapots.
Tea Sets.
Tables.
Ticking.
Tea Trays, Japanned Iron and Papier Mache.
Toilet Sets.
Tassels.
Tassel Hooks.
Towel Racks and Stands.
Towel Holders, 3 arms.
Tufts.
Twine, for Upholsterers.
Table Mats.
Thread, Carpet.
Tow.
Trimmers, for Lamp Wicks.
Tea Strainers.
Teapot Stands.
Tobacco Jars, Majolica.
Terra Cotta Ware.
Toy Cans, with mottoes, etc.
Toy Cups and Saucers.
Toy Tea and Dinner Sets.
Toast Racks.
Twin Coverdishes, Blue Edge, Line.
Taps for Filters, Stone and Brass.

U.

Upholstering done.
Urn Candy Jars.

V.

Vases.
Varnish.
Vinegar Cruets, Cut, Pressed, etc.

W.

Wicking, all sizes.
Wine Glasses, Cut and Pressed.
Wall Paper, English and American.
Wash Screens.
Wash Stands.
Whisk Brooms.
Wardrobes.
Wardrobe Hooks.
Webbing, for Upholsterers.
Whatnots.
Wool.
Wire Dish Covers.
Water Bottles, Red.
Wine Bottles and Labels.
Wool Mats, assorted colors.
Window Glass.

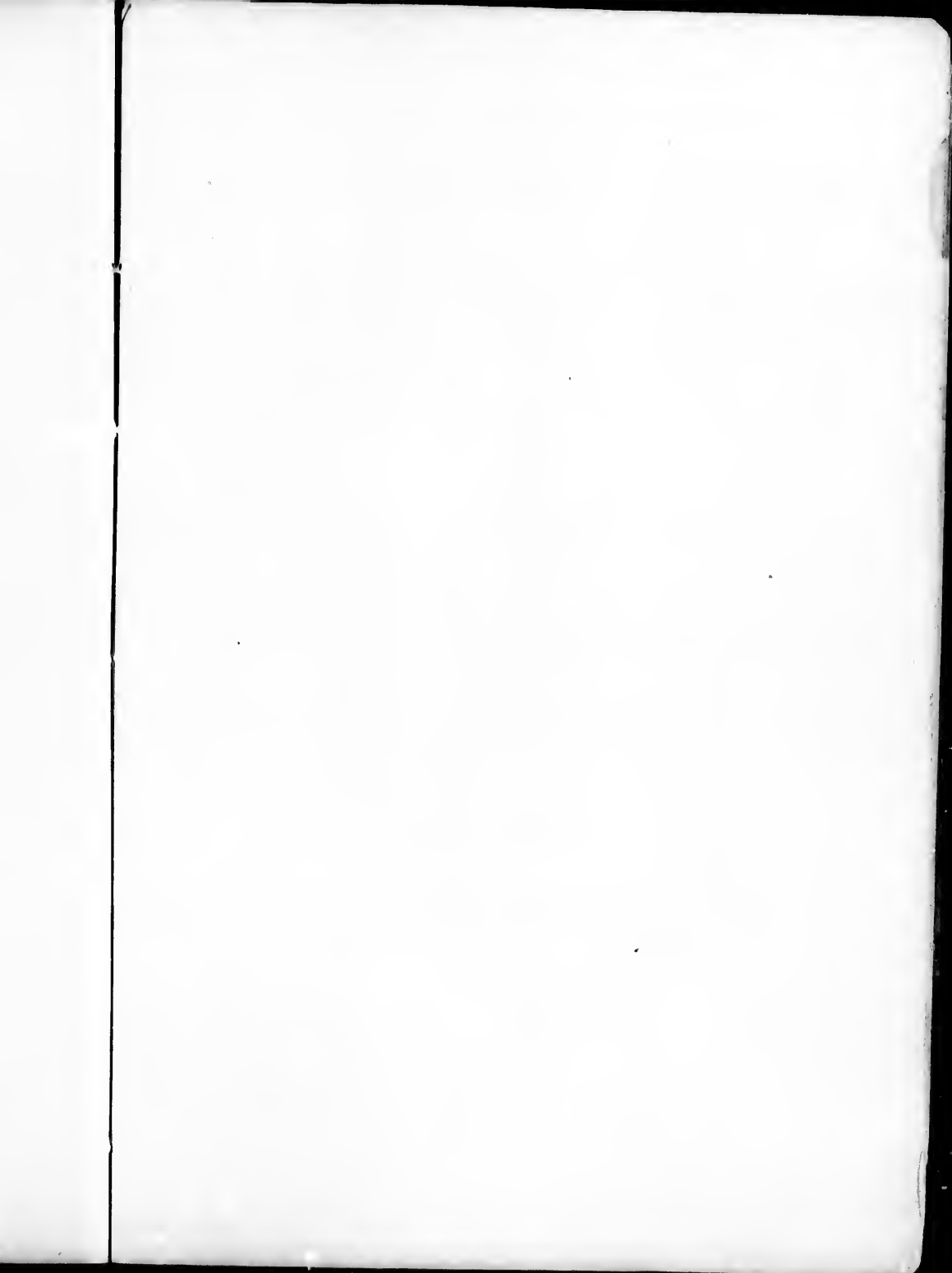
SPECIAL REMARKS.

Maple and Pine Furniture of all kinds manufactured on the premises ; also Upholstery work done and Furniture recovered by most skilful workmen, and at lowest possible rates.

The lower floor of my Warerooms extends 30 x 80 feet, which is exclusively for Crockery, Glassware, Platedware, Wall Paper and Shelf Goods in general, while the upper floor, which covers the entire building, is 86 x 94 feet, and is used for Furniture, Carpets, and Stock-Rooms and Workshop. Besides this I have Mattress and Furniture manufacturing rooms on Broughton Street, in the rear of the premises.

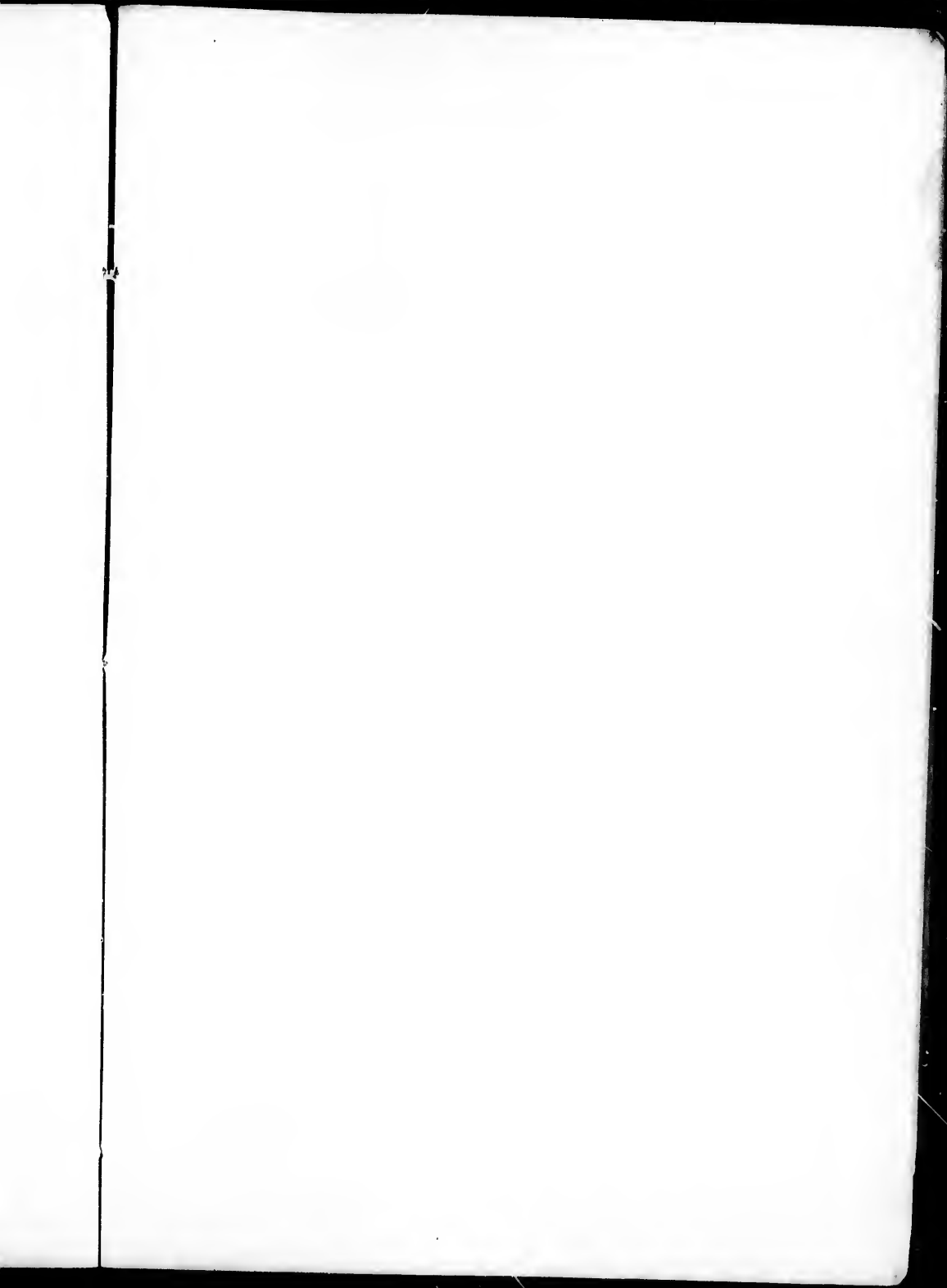
When visiting our city you will find it to your advantage to call and examine my immense stock, before purchasing elsewhere.

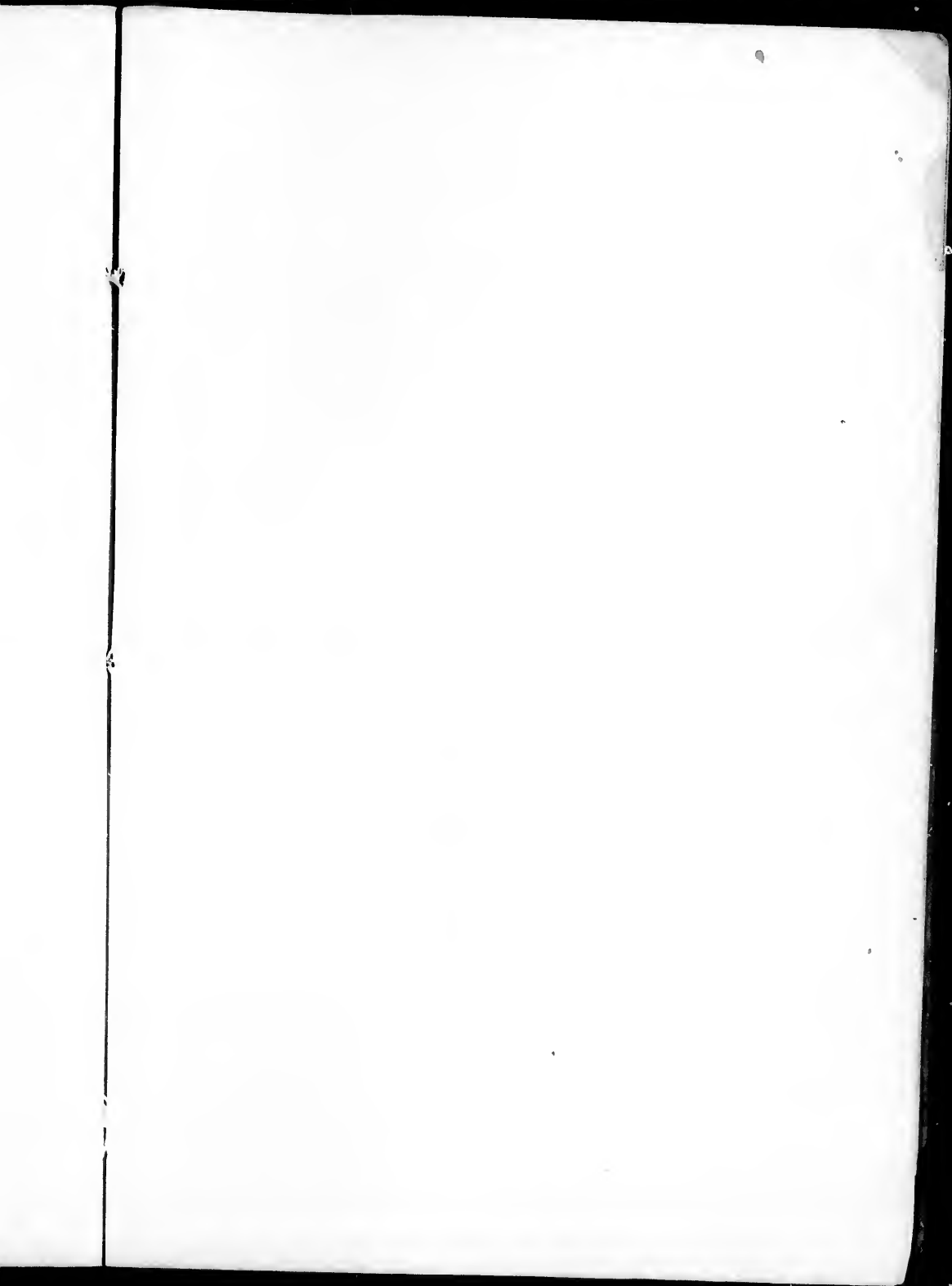
Samples of Wall Paper, Furniture Covering, Ticking, or anything in my line, furnished on application.

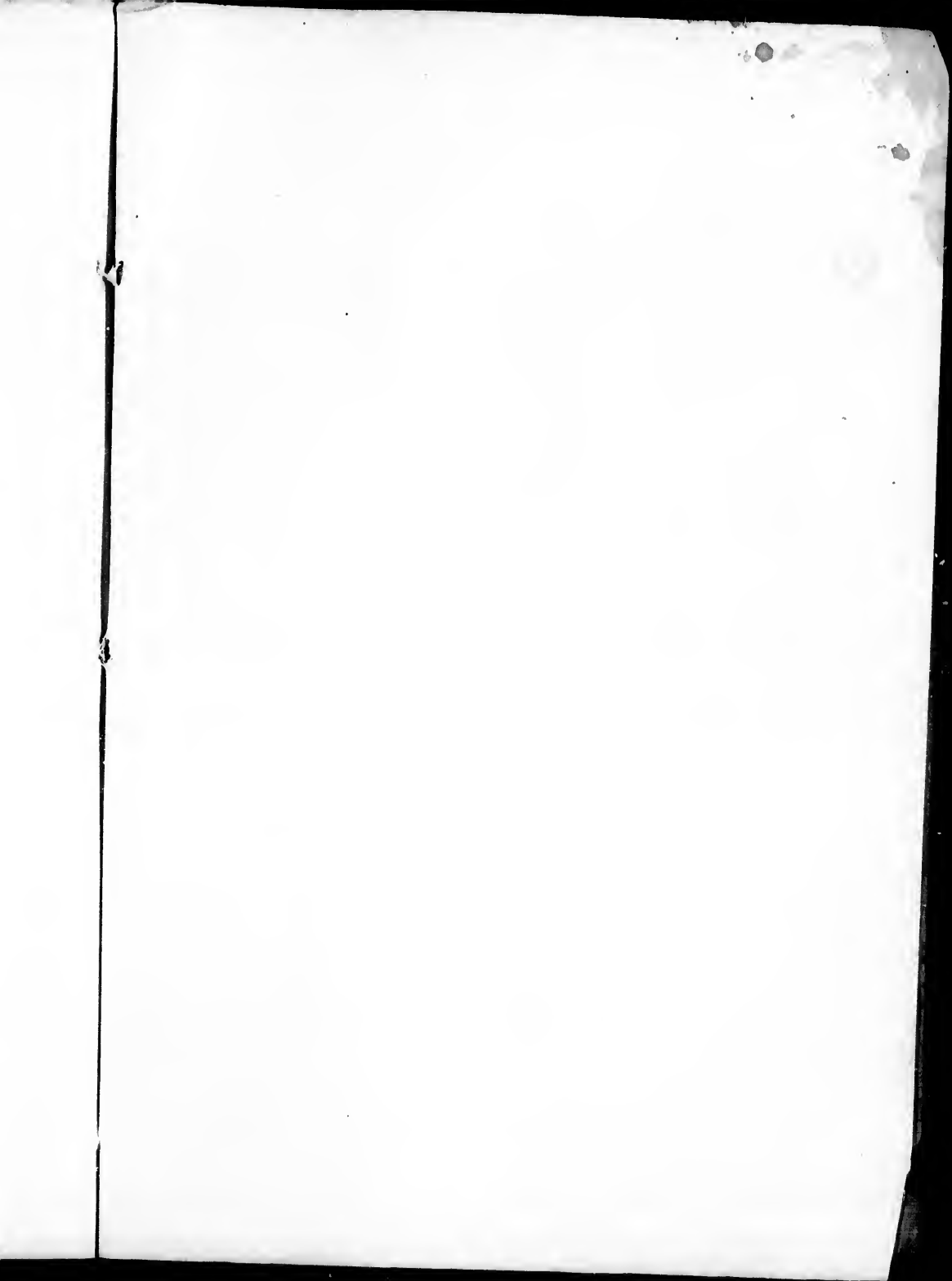


$$\begin{array}{r}
 40 \div \\
 320 \\
 \hline
 640 \\
 \hline
 200 \\
 \hline
 140
 \end{array}$$

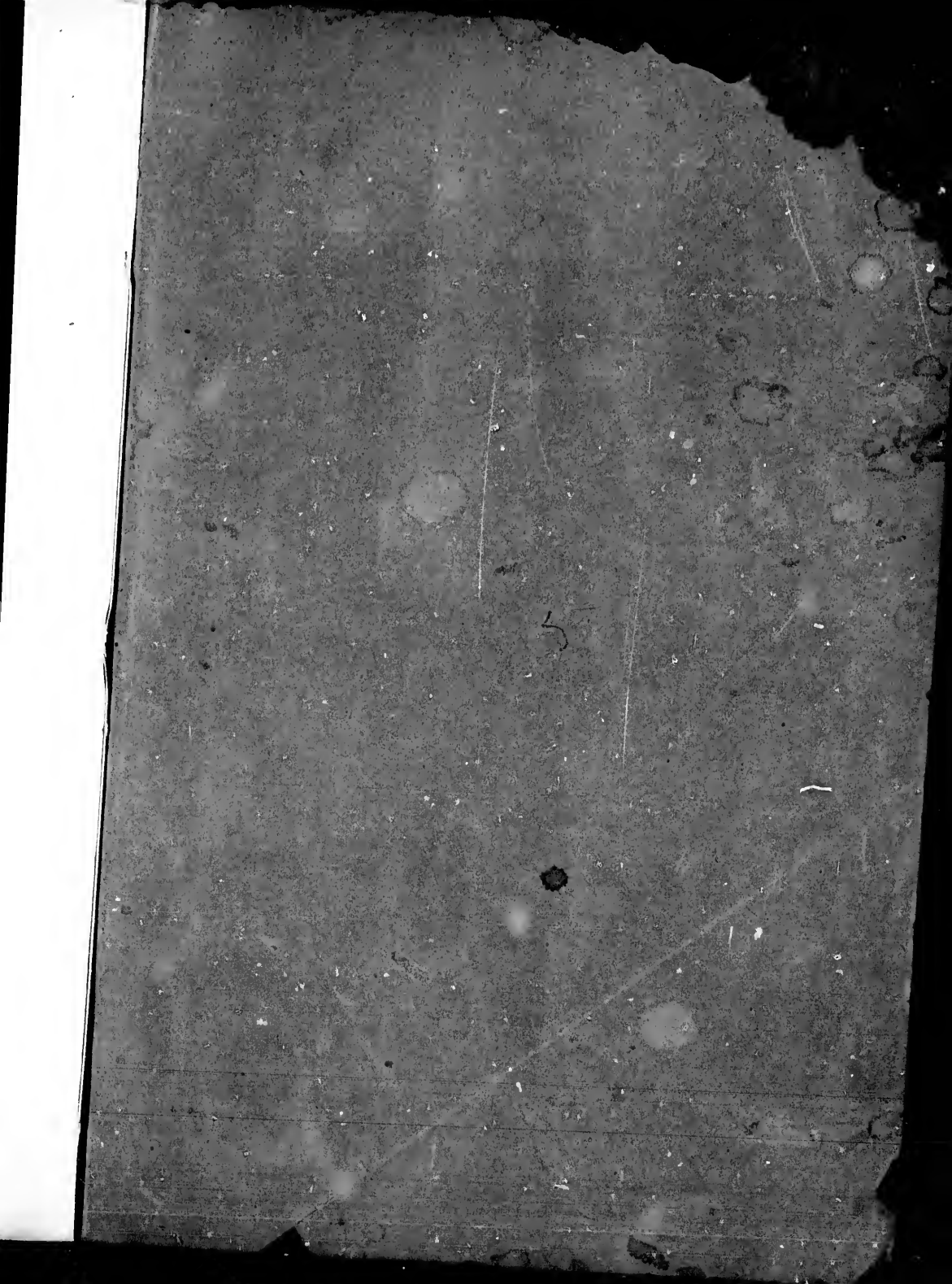
$$\begin{array}{r}
 250 \\
 510 \\
 \hline
 560
 \end{array}$$











I wish the Trade to be
to the immediate and various
I possess, I invite a comparison of
poundage pertaining to my goods.

The large and rapid increase of
of the Trade in favoring me with this
and I shall use my best endeavors
your esteemed orders.

P. O. Box 218.

kindly understand, that owing
to my stock, and the FACILITIES
I offer of PRICES, and solicit corres-
ponding goods to my line.

increase of my sales, and the liberality
with their patronage I appreciate,
and to meet a continuance of

JOHN WEILER

VICTORIA, B. C.

