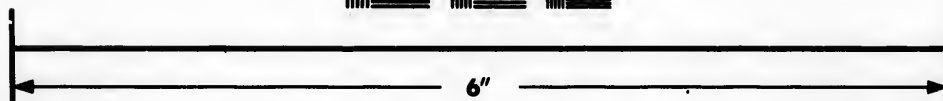
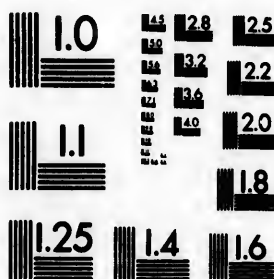
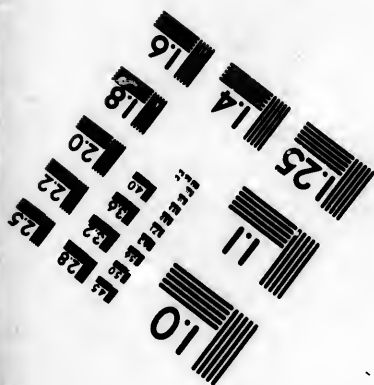


IMAGE EVALUATION TEST TARGET (MT-3)



Canada



Photographic
Sciences
Corporation

23 WEST MAIN STREET
WEBSTER, N.Y. 14580
(716) 872-4503

**CIHM/ICMH
Microfiche
Series.**

**CIHM/ICMH
Collection de
microfiches.**



Canadian Institute for Historical Microreproductions / Institut canadien de microreproductions historiques

© 1984

Technical and Bibliographic Notes/Notes techniques et bibliographiques

The Institute has attempted to obtain the best original copy available for filming. Features of this copy which may be bibliographically unique, which may alter any of the images in the reproduction, or which may significantly change the usual method of filming, are checked below.

L'Institut a microfilmé le meilleur exemplaire qu'il lui a été possible de se procurer. Les détails de cet exemplaire qui sont peut-être uniques du point de vue bibliographique, qui peuvent modifier une image reproduite, ou qui peuvent exiger une modification dans la méthode normale de filmage sont indiqués ci-dessous.

- ☐ Coloured covers/
Couverture de couleur
- ☐ Covers damaged/
Couverture endommagée
- ☐ Covers restored and/or laminated/
Couverture restaurée et/ou pelliculée
- ☐ Cover title missing/
Le titre de couverture manque
- ☒ Coloured maps/
Cartes géographiques en couleur
- ☐ Coloured ink (i.e. other than blue or black)/
Encre de couleur (i.e. autre que bleue ou noire)
- ☐ Coloured plates and/or illustrations/
Planches et/ou illustrations en couleur
- ☐ Bound with other material/
Relié avec d'autres documents
- ☐ Tight binding may cause shadows or distortion
along interior margin/
La reliure serrée peut causer de l'ombre ou de la
distortion le long de la marge intérieure
- ☐ Blank leaves added during restoration may
appear within the text. Whenever possible, these
have been omitted from filming/
Il se peut que certaines pages blanches ajoutées
lors d'une restauration apparaissent dans le texte,
mais, lorsque cela était possible, ces pages n'ont
pas été filmées.
- ☐ Additional comments:/
Commentaires supplémentaires:

- ☐ Coloured pages/
Pages de couleur
- ☒ Pages damaged/
Pages endommagées
- ☐ Pages restored and/or laminated/
Pages restaurées et/ou pelliculées
- ☒ Pages discoloured, stained or foxed/
Pages décolorées, tachetées ou piquées
- ☐ Pages detached/
Pages détachées
- ☒ Showthrough/
Transparence
- ☐ Quality of print varies/
Qualité inégale de l'impression
- ☐ Includes supplementary material/
Comprend du matériel supplémentaire
- ☐ Only edition available/
Seule édition disponible
- ☐ Pages wholly or partially obscured by errata
slips, tissues, etc., have been refilmed to
ensure the best possible image/
Les pages totalement ou partiellement
obscurcies par un feuillet d'errata, une pelure,
etc., ont été filmées à nouveau de façon à
obtenir la meilleure image possible.

This item is filmed at the reduction ratio checked below/
Ce document est filmé au taux de réduction indiqué ci-dessous.

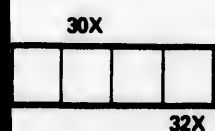
10X	14X	18X	22X	26X	30X
<input type="checkbox"/>	<input type="checkbox"/>	<input type="checkbox"/>	<input type="checkbox"/>	<input checked="" type="checkbox"/>	<input type="checkbox"/>
12X	16X	20X	24X	28X	32X

Plus d'un exemplaire
procureur. Les détails
aut-être uniques du
qui peuvent modifier
peuvent exiger une
normale de filmage

aminated/
pelliculées
ed or foxed/
tées ou piquées

pression
material/
upplémentaire

y obscured by errata
been refilmed to
image/
partiellement
t d'errata, une pelure,
ouveau de façon à
le possible.



The copy filmed here has been reproduced thanks to the generosity of:

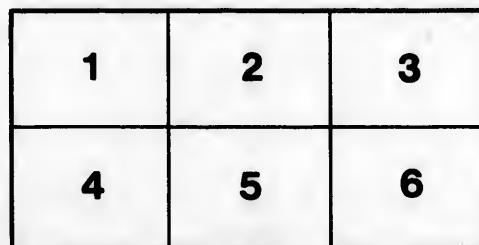
Library of the Public
Archives of Canada

The images appearing here are the best quality possible considering the condition and legibility of the original copy and in keeping with the filming contract specifications.

Original copies in printed paper covers are filmed beginning with the front cover and ending on the last page with a printed or illustrated impression, or the back cover when appropriate. All other original copies are filmed beginning on the first page with a printed or illustrated impression, and ending on the last page with a printed or illustrated impression.

The last recorded frame on each microfiche shall contain the symbol → (meaning "CONTINUED"), or the symbol ▼ (meaning "END"), whichever applies.

Maps, plates, charts, etc., may be filmed at different reduction ratios. Those too large to be entirely included in one exposure are filmed beginning in the upper left hand corner, left to right and top to bottom, as many frames as required. The following diagrams illustrate the method:



L'exemplaire filmé fut reproduit grâce à la générosité de:

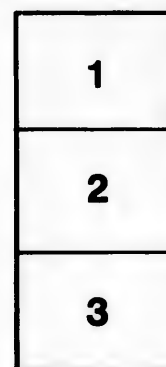
La bibliothèque des Archives
publiques du Canada

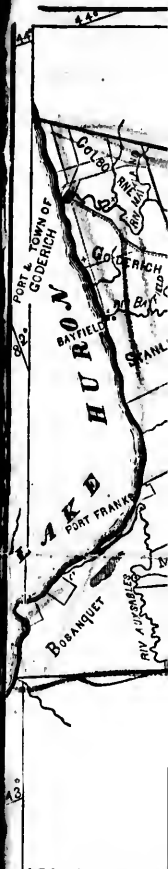
Les images suivantes ont été reproduites avec le plus grand soin, compte tenu de la condition et de la netteté de l'exemplaire filmé, et en conformité avec les conditions du contrat de filmage.

Les exemplaires originaux dont la couverture en papier est imprimée sont filmés en commençant par le premier plat et en terminant soit par la dernière page qui comporte une empreinte d'impression ou d'illustration, soit par le second plat, selon le cas. Tous les autres exemplaires originaux sont filmés en commençant par la première page qui comporte une empreinte d'impression ou d'illustration et en terminant par la dernière page qui comporte une telle empreinte.

Un des symboles suivants apparaîtra sur la dernière image de chaque microfiche, selon le cas: le symbole → signifie "A SUIVRE", le symbole ▼ signifie "FIN".

Les cartes, planches, tableaux, etc., peuvent être filmés à des taux de réduction différents. Lorsque le document est trop grand pour être reproduit en un seul cliché, il est filmé à partir de l'angle supérieur gauche, de gauche à droite, et de haut en bas, en prenant le nombre d'images nécessaire. Les diagrammes suivants illustrent la méthode.



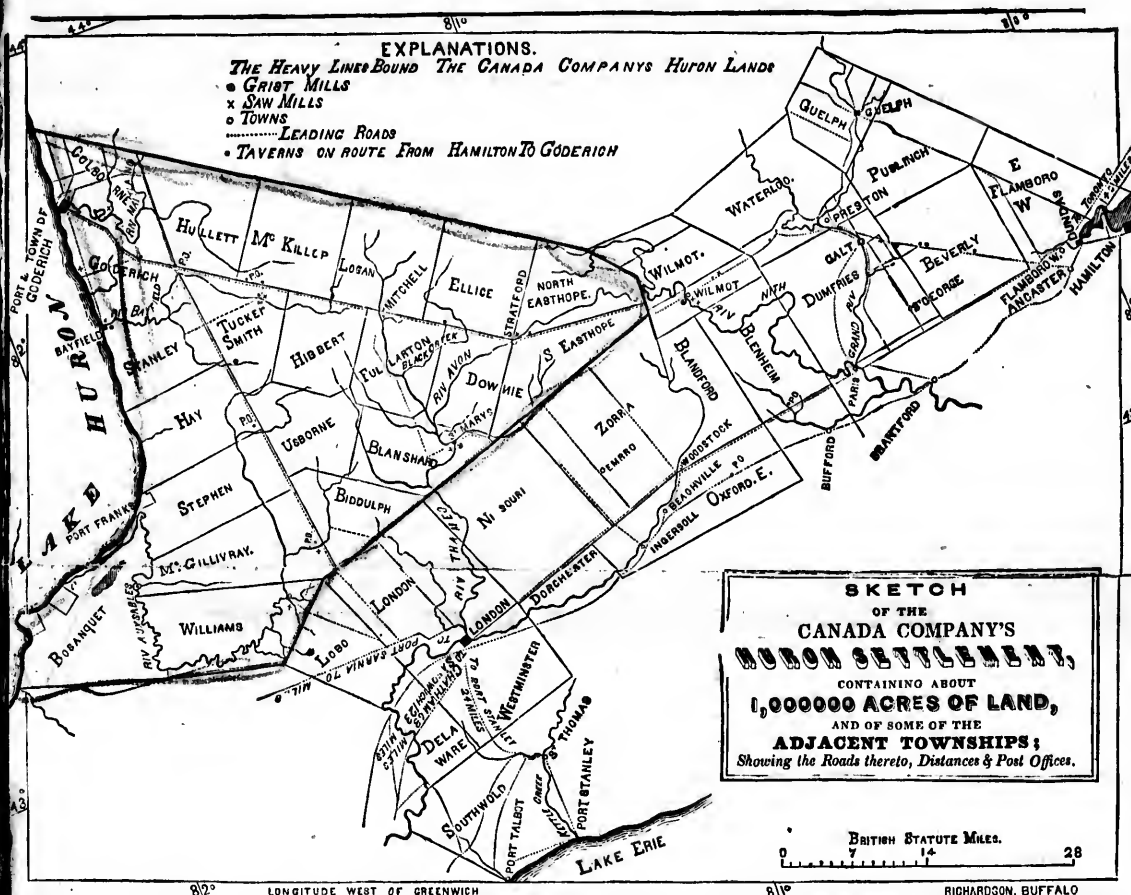


REMARKS

Amounting

0

The Land in the cultivation of which a bad Farm is to be the District Town Mill, an Iron Foundry are taught, &c. &c.



THE ATTENTION OF
REMOVERS, OLD SETTLERS, AND OWNERS,
 IS INVITED BY THE CANADA COMPANY TO THEIR

Amounting to about 240,000 Acres, being the undisposed of part of the original BLOCK,
CONSISTING OF

Bounded by the Shores of Lake Huron for sixty miles.

The Land in the Canada Company's Huron Settlement is of the finest character, and of the description best adapted to the cultivation of Wheat. This Settlement possesses advantages which render it peculiarly eligible to every class of Settler: scarcely a bad Farm is to be found in it: it is well watered by living Streams, and the climate is most healthy. The principal Port is Goderich, the District Town, which has a population of about 1329—good Stores or Shops, Mechanics, a large Grist Mill, a Fulling and Carding Mill, an Iron Foundry, places of Religious Worship, resident Clergymen, and good Schools, where the higher branches of the Classics are taught, &c. &c. &c.

The Harbour of Goderich is situated at the confluence of the River Maitland with Lake Huron, and is a safe and commodious one. The Huron Settlement is intersected by good Roads in various directions. There are two great leading Roads; one extending Eastward towards Hamilton, at the head of Lake Ontario, about sixty miles; the other Southerly, towards London, about forty-seven miles, where it is met by the Plank Road between Hamilton, London and Port Stanley; and there are about 240,000 acres still undisposed of.

This Settlement is admirably situated for securing the future prosperity of the Settler, from the advantages it possesses over more inland situations, through its water communication with the ocean, as Produce can be conveyed from Goderich to Montreal and Quebec for nearly the same charge as from places within thirty or forty miles land carriage of the Shipping Ports at the foot of Lake Ontario.

To the British and German Emigrant the Canada Company's Huron Settlement possesses peculiar attractions, since the population is almost exclusively British and German; and an Emigrant from Europe can hardly fall of meeting old neighbours already established in some part of the Settlement; and the result of a natural feeling on the part of persons emigrating, is, that certain localities in this manner have here assumed a National character, one old neighbour or countryman inducing another to follow him; and thus are also German Settlements in the Townships of Ellice, Fullarton, Downie, North and South Easthope, Hay, and Stephen.

One great inducement which the Huron Settlement holds out to Old Settlers, is the manufacture of POTASH, and for which no land in the Province is better adapted, as it is entirely timbered with the best kinds of HARD WOOD; and Potash now forms a considerable and profitable article of export from it.

A reference to the map heading this prospectus will shew the situation of the different Townships, and the following is a schedule of the lands open for sale or lease in each of them respectively, and of the Population, as shewn by the recent census:—

POPULATION OF TOWNSHIPS.		ACRES.
Bosanquet.....	1093	21,977
Blanshard.....	2789	1,761
Biddulph.....	2081	600
Colborne.....	921	2,898
Downie and Gore.....	2727	3,561
North and South Easthope.....	4138	7,399
Fullarton.....	1750	3,879
Hullett.....	955	12,390
Hibbert.....	1191	4,473
Hay.....	985	22,794

POPULATION OF TOWNSHIPS.		ACRES.
Logan.....	698	36,785
McGillivray.....	1718	11,755
McKillop.....	848	33,406
Stanley.....	2064	2,762
Stephen.....	742	32,734
Tuckersmith.....	1727	2,421
Usborne.....	1484	2,773
Williams.....	2300	6,365
Goderich.....	4040	864
Ellice.....	1328	29,141

These Lands are offered for disposal on the most advantageous terms, either by way of Lease for ten years, or of Sale for cash. Under the Lease, the rents are payable on the 1st of February each year, and they are about the interest on the cash upset price at 6 per cent. The cash price is, generally speaking, 15s. an Acre, with the exception of a few lots valued at 20s., and when leased from one to three Rents will be required in advance.

The peculiarity of the Company's Leases is, that under them the Company's Settler has secured to him the entire benefit of his improvements, and increased value of the Land,—as he is guaranteed the right of purchase of the Land, at a fixed price named in the Lease, at which he may at any time during the Ten Years demand the Deed for the Freehold:—thus, for example, by paying the moderate Annual Rent and no more, he secures the use of the Land for Ten Years, and then, if he chooses, he may purchase at the price stated in the Lease, or reject it altogether, as he may find it to his advantage—the option being entirely with the Lessee. The Company will, however, make a liberal deduction upon the price, if the Settler requires to purchase the Land before the expiration of the term year of his Lease, and by so doing, he will of course save all future payment of Rent.

SETTLER'S SAVINGS BANK ACCOUNT.

In order to afford every assistance to industrious and provident Settlers, the CANADA COMPANY will receive any sum, no matter how small the amount may be, for which their Lessee Settlers may not have immediate want, ON DEPOSIT—and allow interest at the rate of SIX PER CENT. per annum for the same; but it is clearly understood, that the full amount with interest accrued, shall at all times be at the disposal of the Settler, without notice. For this purpose the Company have opened an Account, which is termed "SETTLERS' PROVIDENT OR SAVINGS BANK ACCOUNT,"—thus affording to the prudent Settler every facility for accumulating sufficient money to purchase the Freehold of the Land which he Leases, whenever he chooses to do so, within the term of TEN YEARS; but should bad harvests, or any other unforeseen misfortunes visit him, he has always the amount deposited, with interest accrued, at his disposal to meet them. The advantages of this account are confined to the Company's actual Lessee Settlers, during the continuance of their Leases.

In case of there being any Occupants or Improvements on the land, it is necessary that the full particulars, including the value of the improvements, should accompany the Application for the Lots.

The Canada Company's Huron Settlement is known to be one of the most healthy and fertile Tracts of Land in Canada, and exhibits very extraordinary progress. This Settlement, in the year 1842, contained 7101 souls: and, according to the Official Returns recently completed for the Board of Statistics, the population of the Company's Huron Settlement exceeds 36,000 souls—showing an increase of about 29,000 in ten years, and that the population has nearly quintupled itself in ten years; a progress in settlement of a tract of land scarcely exceeded in any part of America.

The COMPANY'S Lands are in Blocks, therefore affording facility for the undivided settlement of Families and Friends.

TABLE OF DISTANCES FROM HAMILTON TO GODERICH.

Via WILMOT.		MILES.	Via LONDON.		MILES.
Hamilton to Dundas.....		5	Hamilton to Brantford.....		26
" to Preston.....		17	" to Oxford.....		30
" to Wilmot Village.....		17	" to London.....		30
" to Stratford, in Easthope.....		17½	" to Goderich.....		59
" to Mitchell, in Logan.....		12			
" to Goderich.....		33			
		101½			145

Waggon-hire, with pair of Horses, carrying 18 cwt., per day, £0 15 0

Do. Oxen, do. do. 0 7 6

Stage-hire, for Passengers, about, per mile, each 0 0 3

☞ The centre of the Canada Company's Huron Settlement is ninety miles South from the new Government Settlement in Owen's Sound.

The Canada Company's Huron Settlement is fifty-five miles from Hamilton, at the head of Lake Ontario, and is twelve miles from London. Steamers ply daily from Lewiston and Niagara to Hamilton and Toronto, forty miles; and the distance by Railway from Buffalo to Lewiston, is 20 miles. There are also Steamers constantly passing from Rochester and Oswego to Toronto and Hamilton. A steamboat leaves Buffalo twice a-week for Port Stanley, on Lake Erie, distant 120 miles: London, by the plank road, is thence 24 miles.

commodious one.
; one extending
out forty-seven
0,000 acres still

cesses over more
trent and Quebec
f Lake Ontario.
ce the population
ready established
localities in this
n; and thus are
prevail. There
d Stephen.

and for which no
forms a considor.

ing is a schedule
—

ACRES.
..... 36,785
..... 11,755
..... 33,406
..... 2,762
..... 32,734
..... 2,421
..... 2,773
..... 6,365
..... 864
..... 29,141

for cash. Under
co at 6 per cent.
ased from one to

ro benefit of his
ice named in the
le, by paying the
y purchase at the
he Lessee. The
then returning the

ceive any sum, no
—and allow interest
t accrued, shall at
le, which is termed
mutating sufficient
TEN YEARS; but
est accrued, at his
ing the continuance

adding the value of

nd in Canada, and
ng to the Official
is 36,000 souls—
ars; a progress in
nd Friends.

MILES.
..... 26
..... 30
..... 30
..... 59

145

ment Settlement in

twelve miles from
by Railway from
onto and Hamilton.
ank road, is thence

✂ The Canada Company have also for disposal Land in Blocks containing from Three Thousand and Nine Thousand acres each, in the Western District; and in One and Two Hundred acre Lots, scattered throughout almost every township in Canada West.

✂ Every requisite information upon the HURON and CANADA COMPANY's other Lands in the Province, will be furnished, *Free of Charge*, by application (if by letter, Post-paid) to the CANADA COMPANY'S OFFICE, at TORONTO, and GODERICH, and at Stratford, C. W.

A paper, containing full and complete information upon Canada for Intending Emigrants of all classes, printed in the English and German languages, for transmission to Europe, may be had *gratis* at either of the Canada Company's Offices in England or in the Province, or at H. M. Emigrant Office at Quebec, at which port the Canadian Government have recently appointed Mr. J. SINN, a German, as their Agent, to assist and protect the German Emigrants.

CANADA COMPANY'S OFFICE,
Frederick-Street, Toronto, and Goderich, }
30th April, 1852.

REPORT,

By the Clerk of the Peace of the United Counties of Huron, Perth and Bruce, upon the state of Crime within the said United Counties, during the year 1850.

TO THE HONOURABLE BOARD OF REGISTRATION AND STATISTICS, TORONTO:

There are few circumstances in the history of an infantile settlement, more delightful to the statist or philanthropist, than the contemplation of the diminution of crime, and advancement of the prosperity of a people, or that tell more forcibly in favour of the good government of mankind, than when they are accompanied by active industry, full employment, and the real prosperity of a large, miscellaneous and contented community.

Moreover, the facts which I am about to adduce in support of the above sentiments, are big with enquiry and contemplation, both to the philosopher and the politician. Indeed it cannot be disputed in the present day, that the melioration of the condition of the people in all civilized countries under free and liberal governments, can only prosper and go hand in hand with just, equitable and humane legislation.

To the individual integrity of the Magistracy—now ramified over the length and breadth of the two senior counties—and by their benevolent and upright discharge of the administration of justice in accordance with the law of the land—to the absence also of political and sectarian animosity, but principally to the industry and morality of the people, are we mainly indebted for the remarkable diminution of crime which adorns the period in these united counties since the census in 1848.

But as facts are better than arguments, I shall at once go to the proof, in as far as the documents in my possession, and the returns of convictions by the Magistracy, and the records of the Courts of Quarter Sessions are concerned; leaving the trifling matters connected with the Courts of Assize—over whose statistics I have no control—to speak for themselves in another place.

The population of the Huron District in 1841, was..... 5,600
In 1847, six years thereafter 16,641.. Increase, 11,043
In 1844, one year thereafter 20,450.. Increase, 3,807
In 1850, two years thereafter 26,333.. Increase, 6,483

The last quotation is nearly independent of the new and fast settling county of Bruce, which, owing to the infancy of its municipal institutions, only returned 360 persons for the townships of Huron and Kincardine, but which may now confidently be assumed to contain from 3000 to 4000 inhabitants—say 3,067—or a total population of the three united counties of 30,000

Being an increase for 1849 and 1850 of 9,550
Or a total increase, since 1841, of 24,400
An increase almost incredible, as upon reference to Smith's work on Canada, it will be found that the Huron District has made more rapid progress since its first settlement in 1827, than Lower Canada did in one hundred and four years, its population then being (in 1721) 24,511.

It should be borne in mind that the population of the United Counties, by the census returns, is composed of natives of England, Scotland and Ireland, French-Canadians, British Canadians, Germans, Dutch, United States, and other countries, living in peaceful neighbourhood, all rejoicing under twenty different subdivisions of the Christian faith, but by hypothesis not likely to remain in good fellowship. Daily experience, however, proves the contrary.

As regards the statistics of crime—and really the picadillos committed in 1850 do not deserve so high a title—I shall first state those returned in 1848.

Convictions made by Justices in 1848..... 174
Tried at Quarter Sessions..... 13
Deduct acquitted 7

Total convicted in 1848..... 180

Convictions by Justices in 1850..... 120
Tried at Quarter Sessions..... 1
Deduct acquitted 1

Decrease of convictions for 1850 60

Amount of fines, penalties or damages, imposed by Justices in 1848, ..£112 19
Amount imposed in 1850£85 19 1
Deduct amount remitted 27 18 2
58 0 11

Decrease of fines for 1850.....£ 64 18 9

It is with no invidious feeling that I would here contrast the above with the statistics of crime for the city of Toronto for 1850, the number of parties apprehended there being 1,608, the city having a similar amount of population with the Huron. Such, however, is the melancholy difference between a city and an agricultural population.

In this favoured portion of the province of Upper Canada—blest with a salubrious climate and a fertile soil, watered with crystal springs and brooks in every direction, reposing upon a table land whose natural drainage flows uninterruptedly onwards to the streams and great rivers which intersect it in every quarter towards the noble Huron or Lake St. Clair—the energies of the people have been steadily devoted to practical progress and improvement, having in the short period above alluded to brought upwards of eighty thousand acres of the wilderness under cultivation, erected five thousand dwelling houses, fifty-six schools, fourteen churches, twelve grist mills with nineteen run of stones, five oat and barley mills, five distilleries, two breweries, eight tanneries, and twenty-four pot and pearl ash factories.

Among other matters which crowned their industry in 1850, I may shortly state the following productions:—

Wheat..... 232,949 bushels.
Barley..... 13,012 "
Rye..... 2,181 "
Oats..... 215,415 "
Peas..... 34,637 "
Indian corn..... 5,352 "
Potatoes..... 210,913 "
Buckwheat..... 673 "
Mangel wurtzel..... 297 "
Turnips..... 143,725 "
Hay..... 12,833 tons.
Flax or hemp..... 7,359 pounds.
Maple sugar..... 331,721 "
Wool..... 54,347 "
Fulled cloth..... 10,303 yards.
Linen or cotton cloth..... 1,197 "
Flannel or other unfilled cloth..... 41,397 "
Cheese for market..... 7,761 pounds.
Butter for market..... 58,783 "
Beef or pork for market..... 1,308 barrels.

And they further rejoice in the possession of the following stock:—

Neat cattle..... 28,260
Horses..... 2,646
Sheep..... 20,022
Hogs..... 14,655

The above gratifying examples speak loudly for the industry of the settlers; and whose hired labour can with difficulty be obtained at a high remuneration, notwithstanding the yearly increasing ratio of new comers, and moreover where all are diligently employed in the onward march to happiness and independence, we may truly be thankful to a superintending Providence that prosperity is in the ascendant, and that crime is on the decline.

All which is respectfully submitted by

DANIEL LIZARS,
Clerk of the Peace.

Office of the Clerk of the Peace, }
Goderich, May 1851. }

• By the Census of 1852, just taken, the population is 37,480; which shows that in the short space of two years the increase has been 10,547.

