

Technical and Bibliographic Notes / Notes techniques et bibliographiques

The Institute has attempted to obtain the best original copy available for filming. Features of this copy which may be bibliographically unique, which may alter any of the images in the reproduction, or which may significantly change the usual method of filming, are checked below.

L'Institut a microfilmé le meilleur exemplaire qu'il lui a été possible de se procurer. Les détails de cet exemplaire qui sont peut-être uniques du point de vue bibliographique, qui peuvent modifier une image reproduite, ou qui peuvent exiger une modification dans la méthode normale de filmage sont indiqués ci-dessous.

Coloured covers/  
Couverture de couleur

Coloured pages/  
Pages de couleur

Covers damaged/  
Couverture endommagée

Pages damaged/  
Pages endommagées

Covers restored and/or laminated/  
Couverture restaurée et/ou pelliculée

Pages restored and/or laminated/  
Pages restaurées et/ou pelliculées

Cover title missing/  
Le titre de couverture manque

Pages discoloured, stained or foxed/  
Pages décolorées, tachetées ou piquées

Coloured maps/  
Cartes géographiques en couleur

Pages detached/  
Pages détachées

Coloured ink (i.e. other than blue or black)/  
Encre de couleur (i.e. autre que bleue ou noire)

Showthrough/  
Transparence

Coloured plates and/or illustrations/  
Planches et/ou illustrations en couleur

Quality of print varies/  
Qualité inégale de l'impression

Bound with other material/  
Relié avec d'autres documents

Continuous pagination/  
Pagination continue

Tight binding may cause shadows or distortion along interior margin/  
La reliure serrée peut causer de l'ombre ou de la distorsion le long de la marge intérieure

Includes index(es)/  
Comprend un (des) index

Title on header taken from:/  
Le titre de l'en-tête provient:

Blank leaves added during restoration may appear within the text. Whenever possible, these have been omitted from filming/  
Il se peut que certaines pages blanches ajoutées lors d'une restauration apparaissent dans le texte, mais, lorsque cela était possible, ces pages n'ont pas été filmées.

Title page of issue/  
Page de titre de la livraison

Caption of issue/  
Titre de départ de la livraison

Masthead/  
Générique (périodiques) de la livraison

Additional comments:/  
Commentaires supplémentaires:

This item is filmed at the reduction ratio checked below/  
Ce document est filmé au taux de réduction indiqué ci-dessous.

10X	12X	14X	16X	18X	20X	22X	24X	26X	28X	30X	32X
									✓		

# BANK OF MONTREAL

ESTABLISHED 1817.

Capital all Paid-up - \$12,000,000  
Reserve Fund, - 6,000,000  
Undivided Profits - 886,910

HEAD OFFICE, MONTREAL

BOARD OF DIRECTORS.

Hon. Lord Strathcona and Mount Royal, O.C.M.G., President.  
Hon. G. A. Drummond, Vice-President.  
A. T. Paterson, Esq., Hugh McLennan, Esq.  
W. C. McDonald, Esq., R. B. Angus, Esq.  
Edw. D. Greenhalgh, Esq., A. F. Gaul, Esq.  
W. W. Ogilvie, Esq.  
E. S. CLOUSTON, General Manager.

BRANCHES in all the principal cities and towns throughout the Dominion of Canada, and in the following cities:  
St. John's, Newfoundland London, Eng., 22 Abchurch Lane, E.C.  
New York, 19 Wall St. Chicago, 183 La Salle Street.

BANKERS AND CORRESPONDENTS.

Liverpool—Bank of Liverpool  
Scotland—British Linen Co. Bank and Branches.

WINNIPEG BRANCH

Travellers' Circular Letters of Credit and Commercial Credits issued for use in all parts of the world.  
Collections made on favorable terms.  
Interest allowed on deposits at current rates.

A. F. D. MACGACHEN, Manager

# DOMINION BANK

CAPITAL (PAID UP) - \$1,500,000  
RESERVE FUND - 1,500,000

Hon. Sir Frank Smith, Pres., E. B. Osler, Vice-Pres.

HEAD OFFICE, TORONTO

R. D. GAMBLE, GENERAL MANAGER

FOREIGN AGENTS

LONDON, ENG.—National Bank of Scotland, Limited  
NEW YORK—Agents Bank of British North America and National City Bank.

MINNEAPOLIS—Northwestern National Bank.

CHICAGO—Commercial National Bank

BUFFALO—Bank of Buffalo.

BOSTON—Howard National Bank.

A General Banking Business Transacted

Special attention given to Collections

Winnipeg Branch - F. L. Patton, Manager

# UNION BANK OF CANADA

CAPITAL PAID-UP, - \$1,500,000  
RESERVE FUND, - 359,000

HEAD OFFICE, QUEBEC.

BOARD OF DIRECTORS

Andrew Thomson, Esq., Pres. Hon. E. J. Price, Vice-Pres.  
D. C. Thomson, Esq., E. J. Hale, Esq.  
E. Giroux, Esq., Jas. King, Esq., M.F.P.

Hon. John Sharples, J. G. Billett, Inspector

E. E. Webb, General Manager.

BRANCHES IN MANITOBA AND NORTH WEST TERRITORIES

WINNIPEG—THOS. McCAFFRY, Manager.

GEORGE HOWLES, Assistant Manager.

Boisevain, Man.	Deloraine, Man.	Moosemin, N.W.T.
Melita, Man.	Holland, Man.	Moose Jaw, N.W.T.
Carberry, Man.	Leithridge, N.W.T.	Neepawa, Man.
Carman, Man.	Warden, Man.	Weldon, Man.
Minnedosa, Man.	Souris, Man.	St. Charles, Man.
Hamiota, Man.	Manitow, Man.	Wawanesa, Man.
Indian Head, Assa.	Meleod, Alberta	Greta, Man.
Hartney, Man.	Carry, N.W.T.	

BRANCHES IN ONTARIO AND QUEBEC

Alexandria, Ont.	Norwood, Ont.	Smith Falls, Ont.
Hastings, Ont.	Ottawa, Ont.	Toronto, Ont.
Merrickville, Ont.	Quebec, Que.	Warrton, Ont.
Montreal, Que.	Shelburne, Ont.	Winchester, Ont.

A General Banking Business Transacted.

Safe Deposit Boxes to Rent.

# S. A. D. BERTRAND

OFFICIAL ASSIGNEE

For the Province of Manitoba, under the recommendation of the Board of Trade of the city of Winnipeg.

Insolvent and Trust Estates Managed with Promptness and Economy.

Special attention to Confidential business Enquiries.

CORNER 2ND AVE. AND 2ND ST. NORTH.

WINNIPEG, MAN.

# Imperial Bank of Canada

HEAD OFFICE, TORONTO.

Capital Paid Up - \$2,000,000  
Reserve - \$1,200,000

DIRECTORS:

H. S. Howland, President. T. R. Merritt, Vice-President.  
Wm. Ramsay, Robt. Jeffrey, (St. Catharines).  
Hugh Ryan, T. Sutherland Slayter, Elias Rogers  
D. R. WILKIE, General Manager.

BRANCHES IN THE NORTHWEST AND DISTRICT OF COLUMBIA.

Winnipeg, Man.	C. S. Hoare, Manager.
Brandon, Man.	N. G. Leslie, "
Portage la Prairie, Man.	W. Bell, "
Calgary, Alta.	M. Morris, "
Prince Albert, Sask.	R. Davidson, "
Edmonton, Alta.	O. R. F. Kirkpatrick, Manager
Edmonton South, Alta.	Sank Ste. Marie, Ont.
Vancouver, B. C.	A. Jukes, Manager.
Registok, "	A. R. B. Heard, Manager

BRANCHES IN ONTARIO AND QUEBEC.

Essex, Ont.	Ingersoll, Ont.
Galt, Ont.	Niagara Falls, Ont.
Hat Portage, Ont.	Port Colborne, Ont.
St. Catharines, Ont.	St. Thomas, Ont.
Welland, Ont.	Woodstock, Ont.
Forgus, Ont.	

Toronto Branches—Corner Wellington Street and Leader L. E.  
Corner Yonge and Queen Street.  
Corner Yonge and Bloor Streets.

SAVINGS BANK DEPARTMENT—Deposits of \$1 and upwards received and interest allowed.

DEBENTURES—Municipal and other Debentures purchased.

AGENTS IN GREAT BRITAIN—Lloyd's Bank Ltd., 72 Lombard St., London, with whom money may be deposited for transfer by letter or cable to any of the above branches.

## AGENTS IN KLONDIKE

Letters of credit issued payable at St. Michael, Alaska and Dawson City, also Special Deposit Receipts issued negotiable without charge at any of the Hudson's Bay Co's posts in goods or in cash if available.

WINNIPEG BRANCH.

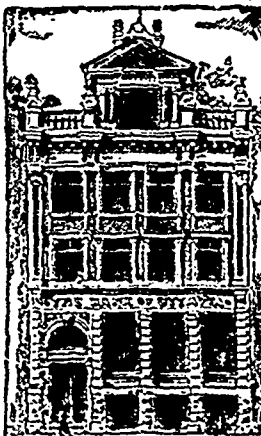
DRAFTS SOLD, available at all points in Canada, United States and Europe.

LETTERS OF CREDIT issued, available in any part of the world.

C. S. HOARE, Manager.

# BANK OF OTTAWA.

Head Office, Ottawa.

Capital paid up, \$1,500,000		Capital authorized, \$1,500,000
------------------------------	---	---------------------------------

This Bank offers to clients every facility which their Balance, Business and responsibility warrant.

WINNIPEG BRANCH, J. B. MONK, Manager

# Dick, Banning & Company

RED OAK WHITE OAK  
BASSWOOD CEILING  
MAPLE FLOORING CEDAR POSTS

Drawer 1230. WINNIPEG, MAN.

# THE CANADIAN BANK OF COMMERCE

HEAD OFFICE, TORONTO.

Capital Paid-up - \$0,000,000

Hon. George A. Cox, President.  
B. E. Walker, General Manager

WINNIPEG BRANCH

Accounts of Corporations, Merchants and Individuals received on favorable terms.  
Interest allowed on deposits in Savings Dept. Commercial Credits, Travellers' Credits and Circular Notes issued for use in all parts of the world.

Debentures purchased.

F. H. MATHEWSON, Manager.

# BANK OF BRITISH NORTH AMERICA

ESTABLISHED 1838.

INCORPORATED BY ROYAL CHARTER IN 1810.

Paid-up Capital - £1,000,000 Stg.  
Reserve Fund - £285,000 "

HEAD OFFICE—3 Clements Lane, Lombard St., London.

COMPTROLLER—J. H. Brodie, John James Cater, Henry R. Farrer, Caspard Farrer, Richard H. Olyn, E. A. Hoare, H. J. H. Kendall, J. J. Kingsford, Frederic Lubbock, Geo. D. Whatman  
A. O. Wallis, Secretary.

Head Office in Canada—St. James St., Montreal.

H. Silkehan, General Manager.

J. Elmsly, Inspector.

BRANCHES IN CANADA.

PROVINCE OF ONTARIO: London Bramford Hamilton Toronto Kingston Ottawa	PROVINCE OF NOVA SCOTIA: Halifax	PROVINCE OF MANITOBA: Winnipeg Brandon
PROVINCE OF NEW BRUNSWICK: St. John Fredericton	PROVINCE OF ALBERTA: Victoria Vancouver Edmonton Kaslo	PROVINCE OF BRITISH COLUMBIA: St. James Nanaimo Vancouver Trail (sub-agency)
PROVINCE OF QUEBEC: Montreal Quebec	YUKON DISTRICT: Dawson City	

AGENCIES IN THE UNITED STATES.

New York—52 Wall Street, W. Lawson and J. C. Welsh, Agts.  
San Francisco—120 Sansome St., H. M. J. McMichael and J. R. Ambrose, Agents.

Drafts on Dawson City can now be obtained at any of the Bank's Branches.

# The Western Loan & Trust Co.

LIMITED

Incorporated by Special Act of the Legislature.

Authorized Capital, - \$2,250,000.00  
Subscribed Capital, - \$2,201,200.00

Office, 13 St. Sacramento St., Montreal, Que.

DIRECTORS

Hon. A. W. Ogilvie	Wm. Strachan, Esq.
W. Barclay Stephens, Esq.	R. Prefontaine, Esq., M. P.
E. W. Knight, Esq.	John Hoodless, Esq.
J. N. Greenhalgh, Esq., Q. C.	W. L. Hogg, Esq.

OFFICERS

Hon. A. W. Ogilvie, Pres. Wm. Strachan, Esq. Vice-Pres.  
J. W. Michael, Esq., Accountant W. Barclay Stephens, Esq., Mgr  
Solicitors—Messrs. Greenhalgh & Greenhalgh.  
Bankers—The Merchants Bank of Canada.

This Company acts as assignee, administrator, executor, trustee, receiver, committee of Insults, guardian liquidator, etc. etc. also as agent for the above offices.  
Debentures issued for three or five years, both debentures and interest on the same can be collected in any part of Canada without charge.

For further particulars address the manager

CROTTY & CROSS, AGENTS, WINNIPEG

# D. M. McMILLAN

OFFICIAL ASSIGNEE

For the Province of Manitoba

Insolvent and Trust Estates managed economically and with dispatch.

Insurance, Real Estate, Collection and Commission Agency.

LAPLONT BLOCK

ROSSER AVENUE BRANDON, MAN.

**J. H. ASHDOWN**  
WINNIPEG

**Myers Pumps**  
**Geneva Harvest Tools**  
**Savage Rifles**  
**Loaded Shells**  
**Ball-bearing Wringers**  
**English Iron**  
**Bed-Steads**

**BRIGHT & JOHNSTON**  
DEALERS IN  
**GREEN FRUITS**  
**DRIED FRUITS**  
Nuts, Honey, Cider, Maple  
Sugar and Syrup, Green Vegetables, etc.  
**Winnipeg, Man.**

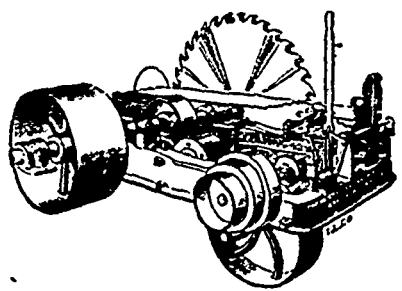


Cars arriving daily of California, Washington and Ontario Fruits. Received today each Ontario Grapes, American Crab Apples, California and Oregon Firestone Peaches. All in line condition. Italian, Yellow Egg, Golden, and Columbia Plums, Freestone Peaches, Ontario Grapes next week.

FOR THE NEWEST IDEAS IN  
**CLOTHING**

SEE OUR SAMPLES

**DONALD FRASER & CO., MANUFACTURERS**  
WINNIPEG MONTREAL

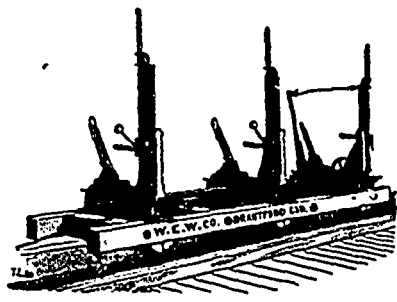


ENGINES AND BOILERS

**Waterous Engine Works Co**  
WINNIPEG, MAN.

**SAW MILL MACHINERY**

Shingle Mills and Planers  
Edgers and Trimmers



MANITOBA'S NEW INDUSTRY

**Ed. Guilbault**

Tin Box Manufacturer

I manufacture, stamp and lithograph all descriptions of Tin Boxes, Butter Cans, Lard Pails, Baking Powder, Tea, Coffee and Spice Cans, etc. Special quotations to large Fish Canneries, Tea Packers, etc.

WRITE OR CALL FOR QUOTATIONS TO

**ED. GUILBAULT**  
ST. BONIFACE MANITOBA

**School Supplies**

We carry a complete line of these, including Text Books. Our range of SCRIBBLERS, EXERCISE BOOKS, NOTE BOOKS and PADS will far exceed anything hitherto shewn by us.

Travellers are now on the road with full range of Fall and Xmas Goods.

Your orders will receive prompt and careful attention.

**Love, McAllister & Co.**  
WINNIPEG  
Wholesale Stationers and Paper Dealers.

If you want BEST GOODS  
at lowest prices  
.. USE ..

**Stephens'**

PURE  
READY  
MIXED **PAINT**

Manufactured by

**G. F. STEPHENS & CO**  
Market Street, WINNIPEG.

**BUGGIES . . .**  
A Line of first-class TOP  
BUGGIES to be cleared  
out at **\$67.50 cash**  
This is a big cut in prices  
Grain Carts for Flat Warehouses  
in stock or to order at close prices.  
**BOYCE'S CARRIAGE WORKS**  
316 TO 324 ROSS STREET, WINNIPEG

# THE COMMERCIAL

The recognized authority on all matters pertaining to trade and progress in Western Canada, including that portion of Ontario west of Lake Superior, the Provinces of Manitoba and British Columbia and the Territories.

Seventeenth Year of Publication

ISSUED EVERY SATURDAY

SUBSCRIPTIONS, CANADA AND UNITED STATES;  
\$2.00 PER ANNUM IN ADVANCE OR \$2.25 WHEN NOT SO PAID; OTHER COUNTRIES, \$2.50 PER ANNUM IN ADVANCE.

Changes for advertisements should be in not later than Thursday Morning.

Advertisements purporting to be news matter, or which profess to express the opinions of this journal, will not be inserted.

Office: 151 McDermot Street.

D. W. BUCHANAN,  
Publisher.

The Commercial certainly enjoys a very much larger circulation among the business community of the vast region lying between Lake Superior and the Pacific Coast, than any other paper in Canada, daily or weekly. The Commercial also reaches the leading wholesale, commission, manufacturing and financial houses of Eastern Canada.

WINNIPEG, SEPTEMBER 10, 1898.

## Buying for Cash.

The cash man is the coming man in the dry goods trade. Such was the view of an old country agent expressed in our hearing the other day. But, as another agent pointed out, "He has already come, the cash man is here—and he is king of the castle." An old-fashioned man who heard this colloquy desired to be enlightened as to what it meant. So he was informed by the second of the persons above mentioned, as follows: "I speak advisedly when I say the importer or wholesale dealer who to-day cannot pay cash for his goods is not in the swim. The best wholesale concerns are now paying cash, and thereby making nine per cent. per annum." That is, we presume, they get three per cent. off every four months' bill. "But do you mean to say," enquired the retired merchant, "that a solvent merchant may not buy at three, or four, or six months if he wishes to?" The reply of the unsmiling agent for a solemn British house was: "I tell you, sir, the importer who cannot pay cash and get his discount is a back number. He is badly handicapped in the competition."

It would not be true to say that all Canadian importing houses are now paying cash for their goods and taking the discount. Some of them which are perfectly able to do so prefer not to pay cash, we are told, because the English discounts on general dry goods are by no means so great as nine per cent. per annum and are not sufficient inducement to pay cash. In buying domestic goods from Canadian manufacturers the wholesale buyer gets long time, often by means of cutting ahead. The discount-for-cash arrangement is thus an advantage to the merchant and often a convenience to the manufacturer.

In the retail trade progress has been made in the same direction. The shrewd and forehanded dry goods retailers in the Dominion have perceived the advantages of cash trade and are now for the most part taking the discount. While it would be going too far to say that those who do not do so are invariably among those whose failures appear from time to time in the record, it is still true that we rarely hear of the failure of a dry goods retailer who pays cash. The process of development has been going on for years, and it has brought out a very considerable number of competent retail dry goods men who aim at selling for cash (more power to them for it); and who have been taught by the logic of events that it pays to buy for cash. It is much to be hoped that their example may be followed by hundreds more.—Toronto Monetary Times.

## Danger of Many Creditors.

The following pertinent advice to retail merchants is from the able address by W. H. Preston, ex-president of the National Association of Credit Men, delivered at the annual convention of the Iowa and Nebraska Retail Implement Dealers' Association, held at Council Bluffs, Ia.:

I have found it the custom of many retail dealers to buy of several houses in the same line of trade. When a dealer is compelled to consult with a wholesale merchant because of his inability to meet his obligations, and the absolute necessity of extension of time, I have often found him indebted to so many houses that it was almost impossible to obtain an extension for him. Many of the smaller creditors, knowing that they have little at stake, would insist upon being paid, and would refuse to grant an extension. The aggregate of the indebtedness represented by these smaller creditors would be sufficient to preclude the possibility of securing the desired extension. I am sure therefore, that the retail dealers will buy to better advantage and have his account in much better shape if he confines his purchases to a few houses as possible consistent with the need of sufficient variety in his stock to meet the requirements of his trade.

One of the most unwise and unjust acts which a dealer can perform is to attempt to transfer his trade to another house while behind in his payments. The fact becomes known very speedily and causes collections to be vigorously crowded. \* \* \* Be loyal to those who have granted you credit. Do not transfer trade when behind in payments. Wait until you have nothing past due, then place your orders with the firm offering the best opportunities.

## Character the Basis of Credit.

The following extract from an address before the students of Packard's Business College, delivered a short time since by James G. Cannon, vice-president of the Fourth National Bank, New York, and president of the National Credit Men's Association, presents in a forceful manner the relationship of credit to character.

The three component parts of credit are character, capacity and capital, and the greatest of these is character. Character counts continually for credit, and I intend to speak to you for a moment upon the question of character in its relation to credit. George Washington in his first inaugural address said: "The foundation of

our national policy will be laid in the pure and immutable principles of private morality," and in reply to this address of Washington by the Senate of the United States these words were used: "We feel, sir, the force and acknowledge the justice of the observation, that the foundation of our national policy should be laid in private morality. If individuals be not influenced by moral principles it is vain to look for public virtue." A well known writer says: "What we are sooner or later shows itself in what we seem. Our character, unconsciously but inevitably, expresses itself in our actions, our speech, our manner, our looks, and finally it is seen by our fellows as they observe us."

What is character? It is an individual matter. You cannot have another's character. You may try to imitate, perhaps, the character of some great man; but to the man himself who is his own master, his character standeth or falleth. Character is that something within you which receives and impresses upon your mind and writes in indelible letters on your heart your thoughts, words and deeds. Character is the fine tone of your heart strings, or else it is the dull thud of life which seems to chill you through and through. Character is that something which points you onward and upward in life's work, or else drags you down to lower and lower depths as it becomes foul with the heavier material of life's dregs. Some one has well said that "character is not something that is added to your life, but it is life itself." Character building is not the work of a moment or a day. You cannot jump into a character as you would into a suit of clothes, unless it be an assumed character. The man with an assumed character is a hypocrite, whom we all despise. Character building is a slow process. It must be worked at continually, and we are building even when we are not conscious of it.

## Grocery Trade Notes.

New Valencia raisins are expected at Toronto next week.

It is reported that New York parties have been trying to buy Fraser river sock-eye salmon in England for shipment back to Canada.

The first direct steamer with currants for Canada left Patras on Wednesday of last week. She sailed for Dania to take on Valencia raisins.

Telegraphic advices to The Commercial last week said that the peach pack would be light and prices probably 30c per dozen higher than a year ago. This refers to the Ontario pack, and is confirmed by later mail reports.

An improved dairy salt will soon be placed on the market, we understand, as the result of the investigations of a competent Ontario chemist. The process of preparing the salt is understood to be simple and inexpensive, while at the same time experiments have shown that it adds in a most marked degree to its preservative qualities.

Referring to the stronger tone of the California prune market based on the shortage in the crop, a prominent New York commission merchant said that from the best information he could obtain he was inclined to believe that the entire output of the state this season would not be over



TELEPHONE 324

P.O. BOX 693

**STUART & HARPER**

758, 760, 762 MAIN STREET, WINNIPEG

**Dealers in Machinery and Supplies**

Boilers, Engines and Steam Pumps, Hoisting Engines and Centrifugal Pumps. Agents for Monarch Economic Boilers. Latest improved Flour Mill Machinery, Woodworking Machinery and Saw Mills, Ironworking Machinery and Tools, Dodge Wood Split Pulleys and Friction Clutches, Dodge system of Manila Rope Drives, Electric Lamps and Motors, Electrical Supplies and Incandescent Lamps, Electrical Repairs.

Large Stock of Second-hand Machinery on Hand

Call and see us or write for prices on any Machinery you are in need of.

**G. F. & J. GAIT****Wholesale Grocers**

PACKERS OF

"BLUE RIBBON" and "UNION JACK" Packet Teas.

**Rat Portage Lumber Co.**

LIMITED

**SASH, DOORS  
MOULDINGS, ETC.**

OFFICE AND WAREHOUSE:

POINT DOUGLAS AVENUE

WINNIPEG, MAN.

CORRESPONDENCE SOLICITED

**J. C. GRAHAM, MANAGER WINNIPEG BRANCH**

**ACETYLENE GAS**

CARBIDE OF CALCIUM

NAPHEY ACETYLENE GAS BURNERS IN STOCK.

The only Burner adapted to use with this gas.

**R. A. WYLLIE, Western Agt., Western Canada Block., Winnipeg, Man.**

100 lb. tins, \$4.50  
Write for Prices  
Large Quantities

**HOTEL LELAND**

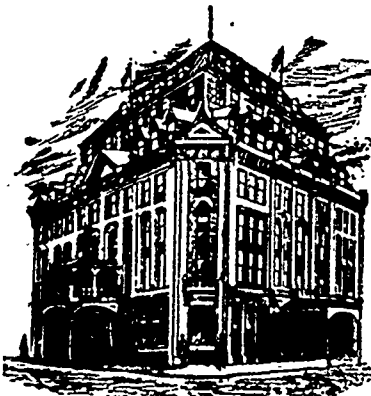
THE PALACE FAMILY AND  
COMMERCIAL HOTEL.

**Rates, \$2.00 to \$4.00 a Day**

Second to nothing in Canada.

**W. D. DOUGLAS, Manager.**

City Hall Square, Winnipeg.

**JOHN W. PECK & CO.**

MANUFACTURERS OF

**CLOTHING,  
FUR GOODS,  
SHIRTS**

Dealers in Men's Furnishings, Hats and Caps.

We would draw especial attention to the fact that we have the only stock now in existence of good Buffalo Coats.

Assorting orders by letter for goods in our lines will receive prompt and careful attention.

**MONTREAL      WINNIPEG**

**A FEW THINGS**

that should be found in every well regulated household

**DREWRY'S**

Choice Stock Ale      Extra Porter

Canadian Pilsner Lager  
(A Fine Light Beer)

Golden Key Brand Aerated Water

Imperial Table Sauce      } Choice Table  
India Chutney                      } Relishes

**E. L. DREWRY**

Manufacturer and Importer, Winnipeg.

**W. E. Sanford Mfg. Co.**

(LIMITED)

**CLOTHING  
MANUFACTURERS**

Hamilton, - - - Ontario

Office and Sample Room :

Corner Bannatyne and Princess Streets

**WINNIPEG**

**MACKENZIE & MILLS**

Importers of and Wholesale  
Dealers in

**Teas, Roasted and Ground Coffees  
Jams, Etc.**

Packers of Britannia, Beaver and Buffalo Blend  
"Packet Teas" and Sole Agents for Thos.  
Lipton's Package Teas for Manitoba, N. W  
Territories and British Columbia.

**244 Princess St., Winnipeg.**

55,000,000 lbs, against 100,000,000 lbs last year.

A Toronto report says that a 25-cans lot of "Horseshoe" brand canned salmon, last year's pack, was bought from a retailer by a wholesaler at \$1.15, but it is said this same retailer was subsequently offered \$1.30 by another house. This shows how strong the market is for canned salmon.

Letters from Japan speak of supplies of rice as fast disappearing and it is believed that stocks will hardly last for home consumption longer than the present month. It is more than likely Japan will be again a buyer in Burmah, with the natural result of firming up values for this grade.

The Montreal Commercial Gazette says: Buyers of teas are still stubborn as to price. They want teas at the same price as last year, and this is impossible, because owing to the United States tea examination laws, the Japs are no longer picking inferior teas as it does not pay for the trouble. There is no help for it then, but to pay at least 1c more this year. This plausible excuse for higher price, be it said, is not ours. It is the reason given by the trade in general by way of supporting higher price arguments. It is a little discomfiting to find that all accounts from Japan coincide in the one fact that whilst teas are higher priced than last year, the quality is worse. This last is ours.

The New York Commercial Bulletin says: The opening prices on 1898 packing of salmon have been announced by the Alaska Packers' Association, and appear to be somewhat of a surprise to the trade, who, in view of the short pack of other varieties and the speculative interest created by the recent Government demands for spot goods, had looked for prices considerably higher than those that have been named. The prices quoted by the Alaska Packing Association are \$1 for red, 97 1-2c for King, 90c for medium red, 70c for pink, and 67 1-2c for silver, all f. o. b. at the coast, less the usual 1-2 per cent discount. These figures are 10c above the f. o. b. prices at the opening of last year, but owing to the lower rate of freight, now prevailing are only about 7 1-2c higher than the lay-down cost in the east a year ago.

### Development of the Lake of the Woods District.

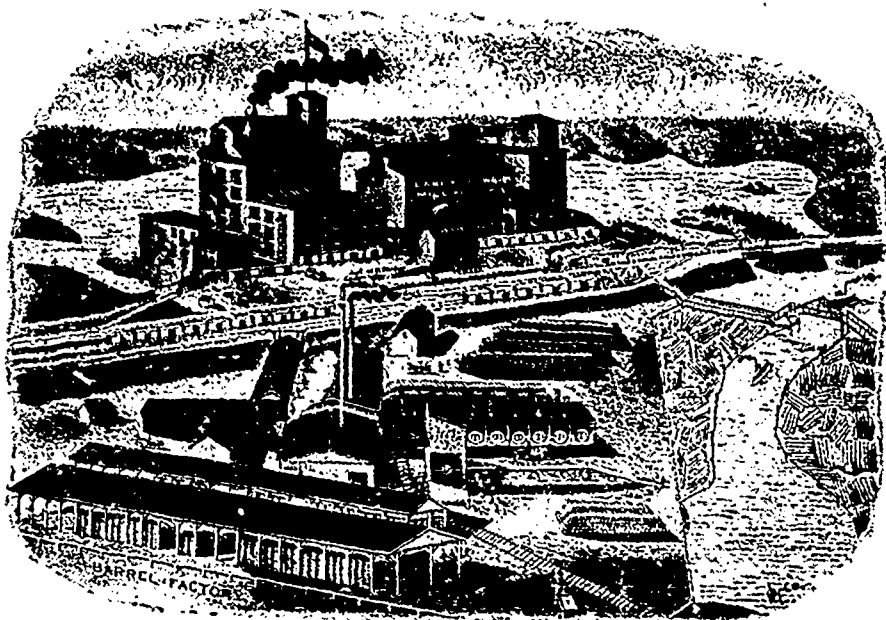
Recent issues of The Commercial have contained articles dealing with the progress and development of some of the rich farming and ranching districts of Manitoba and the adjacent Territory of Assiniboia which are doing so much to make Western Canada famous and to attract the attention of homeseekers and investors in every part of the world. The extensive fishing and trading interests of the northern part of Manitoba have also been touched upon in recent writings, and now we would turn the reader's attention in another direction and to some other industries which are also doing a great deal towards building up the west and attracting capital to it. We refer to the fishing, lumbering and mining industries at the Lake of the Woods. It is interesting to notice that within a radius of 150 miles from Winnipeg all of the above mentioned industries are to-day being carried on and on no small scale either.

It is now a number of years since the towns of Rat Portage and Keewatin, which are situated within three miles of each other on the Lake of the Woods at the point where the Canadian Pacific Railway touches it on its way across the continent, sprang into existence as a result of the advent of the railway and of the establishment of the lumber mills at these points. Since then they have made steady progress in all that goes to make up a prosperous modern town and to-day are as well equipped in a civic sense, having schools, churches, public buildings, thoroughfares, &c., as any places of similar size in Canada.

Necessarily one of two places which lie so close to each other as Rat Portage and Keewatin do must outstrip the other in the race for population, trading interests, &c., and in this case Rat Portage has taken the lead. It is practically the business headquarters for all the Lake of the Woods country and is now in every way worthy to rank among the leading towns of Canada. It has to support

schools, churches and the numerous adjuncts to every progressive town. It has a first-class electric light plant and is putting in a system of water-works this year. It can be imagined what an expensive undertaking this is when it is learned that most of the excavating has to be done in solid rock.

The Lumbering plant of the Rat Portage Lumber company, which is the only one operating at this point, consists of five mills in all—two at Rat Portage proper and three at its suburb—Norman. These are not, of course, all kept running all the time, as the demand for lumber does not warrant that, but three mills are now working night and day on lumber and a fourth is at work cutting ties. Over 400 men are regularly employed by this company in the summer at its mills and the amount paid out for wages alone is over \$1,000 per day. The logs are towed to Rat Portage from the Rainy River country and consist of white pine almost exclusively.



Flour Mill, Elevators, Barrel Factory, Machine Shop, etc., of the Lake of the Woods Milling Co. at Keewatin

it an extensive lumbering business, the gold mines which are now being developed to a considerable extent, a large fishing trade, the supply trade of the lake and Rainy River country, its lake passenger traffic and the business which arises from the annual influx of large numbers of holiday-seekers, many of whom camp on the beautiful islands of the Lake of the Woods. The situation of the town is an admirable one and gives it a commanding view of one of the prettiest parts of the lake. Its streets are somewhat uneven, it is true, but the main business thoroughfares are excellently suited for all kinds of traffic and when the visitor gets accustomed to the inclines the unevenness in the residential parts loses much of its objectionableness and the extra effort of climbing is always more than compensated for by the beauty of the landscape that presents itself when the top of an elevation is reached.

Rat Portage is well equipped with business blocks, stores, hotels,

The mining industry around Rat Portage has attracted a great deal of attention to the town during the past two years. It has been determined that the rock found in this country will yield gold in paying quantities and that some of it is very rich in that metal and as a result nearly the whole country has been prospected and staked out into claims and now where the necessary money for developing can be raised that work is being energetically pursued and in some cases the mines are already paying satisfactory dividends. That this industry is bound in a few years to assume large proportions there does not seem to be much room to doubt and so long as it is pursued as a legitimate business and is kept free from the speculative and gambling element which so often enters into mining it will command the attention and good will of all who have the development of Western Canada at heart. This year has seen a very large amount of mining machinery imported by the

<p>AMERICAN <b>COAL OIL</b></p>	<p><b>BRANDS ...</b></p> <p>DOMINION CROWN T. &amp; P. DIAMOND</p> <p>—</p> <p>ALL PENNSYLVANIA PRODUCT</p>	<p><b>TEES &amp; PERSSE</b> WINNIPEG, MAN.</p>
-------------------------------------	---	--

## "Excelsior" Ready Rations

Are not extracts or essences, but **COOKED FOOD READY FOR USE.** The miner in his camp, or the farmer in the hayfield can have a cold dinner in 10 seconds or a hot one in 10 minutes. By using our **TEA WAFERS** he can carry material for **100 Cups of Tea in a Snuff Box.** They are all conveniently packed for easy transportation, and are **CHEAP AS FOOD BOUGHT AND COOKED.**

**LOCKERBY BROS.**

ALL GOODS PUT UP IN SMALLEST  
POSSIBLE BULK

St. Peter St., MONTREAL

## The Whitham Shoe Co., Ltd.

MANUFACTURERS OF  
FINE

**FOOTWEAR**

43, 45, 47 ST. MAURICE STREET

MONTREAL

## WANTED

Dealers of the Northwest to know that we are in charge of the **GOVERNMENT COLD STORAGE WAREHOUSE** at Revelstoke, B.C., the gateway of the Kootenay. We are a British Columbia house.

**F. R. STEWART & Co.**

Butter, Eggs, Cheese  
Hams, Bacon, California Fruits

Head Office and Warehouse, 30 and 32 Water St., Vancouver  
Branch Office and Warehouse, 40 Yates Street, Victoria  
Representatives at Revelstoke and Nelson, B.C.

HIDES WOOL

**NORTHWEST HIDE CO.**  
Andersch Bros., Props  
Heiman Telke, Mgr.

270 KING ST.  
WINNIPEG, MAN.

SENECA ROOT SHEEP PELTS

FUR TALLOW

GRANULAR

# Ogilvie's Hungarian

CREAMY

HAS NO EQUAL

## FLOUR

HAS NO EQUAL

**STANDS** unparalleled in its Distinctive Qualities and Peculiar Advantages. We are aware others are attempting to imitate our Brands, which is the Strongest Guarantee of the Superiority of

Messrs the Ogilvie Milling Co., Winnipeg, Man.  
Dear Sirs—We have pleasure in stating that the quality of the flour made in the Winnipeg mills, of which we have imported considerable on this crop, has given the highest satisfaction to everyone who has baked it. Glasgow is pre-eminently a city of large baking establishments, some of them with a capacity of 2000 barrels per week, and all managed by gentlemen well qualified to give a sound verdict on the merits of any flour. With remarkable unanimity they have expressed the opinion that nothing finer than your Patent grade has ever been placed on the market. The baking results have been exceptionally high, both in regard to color and out-turn, and we can invariably command a higher price. We are, yours respectfully,

WILLIAM MORRISON & SON.

IN HANDLING  
**OGILVIE'S FLOUR**  
YOU HAVE

**THE BEST**

Each bag guaranteed. Sewn with our Special Twine, Red, White and Blue.

**OGILVIE'S HUNGARIAN**

Unequalled for fine Cakes and Pastry. Stands unrivalled for Bread Making. Make the sponge thin. Keep the dough soft. Do not make it stiff. For pastry use little less flour than usual.

"OGILVIE'S FLOUR"



various mine owners and this is now being placed and housed so that the work of taking out and treating the ore may be gone on with next year. A large reduction works plant has existed at Rat Portage for some years.

Fishing is another industry which commands attention at Rat Portage. This is largely in the hands of Americans and the product is mostly shipped to the United States.

A number of freight and passenger steamers doing business on the Lake of the Woods and up the Rainy river as far as Fort Frances make their headquarters at Rat Portage and bring considerable business to the town. This year has witnessed a great increase in the popularity of the run to Fort Frances as a pleasure trip and the fine twin-screw steamer Keenora which makes tri-weekly trips to that point has yielded her owners considerable revenue from this source. Besides the passenger business to various points of interest on the lake Rat Portage has for many years been in great favor as a holiday resort and watering place.

We have already mentioned one public improvement which is being made this year—the new waterworks. Besides this many private enterprises are being added to the town. A new opera house to replace the one burned down early in the year is being built by Louis Hilliard, proprietor of the Hilliard hotel; the Rat Portage Cold Storage company is building a cold storage warehouse; Messrs. Gordon & Ironsides are building an abattoir and the Presbyterian congregation are commencing the erection of a handsome church building. These are additions which are going on at present, many others are now in a state of completion, notably an addition to the Hilliard hotel, which makes it one of the largest and most comfortable hostleries in this country.

Norman, the western suburb of Rat Portage, is sharing in its general prosperity, and has had several additions to its business community this year. A fine brick school house is among the real improvements. It is at this point that the power dam of the Keewatin Power company is located, which is destined in a few years to furnish power for important milling industries.

Keewatin is three miles west of Rat Portage on the Canadian Pacific railroad, and overlooks Keewatin Bay. It is famous for the magnificent flour milling plant which it possesses, the property of the Lake of the Woods Milling company. This mill has a capacity which is calculated by the thousands of barrels per day. It has as a subsidiary industry a barrel factory, where all the barrels for the mill are manufactured. This entire plant is operated with water power.

The Keewatin Lumber company has its mills at this point, and these add not a little to the importance of the town. R. A. Mather, who manages the concern, is also manager of the Keewatin Power Co.

The new gold milling plant of The Ottawa Gold Milling and Mining Company at Keewatin is an addition to its industrial establishments, which may be ranked as of first-class importance. This was completed and put in operation in 1897, and is one of the best equipped plants of the kind in Canada. It is a customs mill and ore is shipped to it for treatment from

many of the mines which are now being worked in various parts of the district.

Several important public improvements have been made at Keewatin this year, among them the building of a large section of the railway yard. A new public school has also been built at a cost of over \$6,000.

It will be seen from the foregoing that substantial progress is being made in industrial development at the principal centres of the Lake of the Woods country. If all the anticipations of a few years ago in regard to this district have not been realized it is only because many of them were unreasonable, and some impossible of fulfillment. Experience is proving here as it has everywhere that it takes time to build up a new country and inaugurate new industries where large capital and skilled treatment is required, and the promises of the boomsters, who are always to be found in new localities of this kind, and who are ever ready to predict all kinds of astonishing things for their momentary favorite, were from the first doomed to remain unfulfilled. The true friends of the district who have its real interests at heart are very well satisfied with what has been already accomplished, and look forward with undiminished faith to the same steady progress in the future.

### \*Who will Handle the Crop

At the beginning of a new crop year it may be interesting to know something about the companies, firms and individuals who will handle the grain crops of Manitoba and the Territories this year. When we speak of those who will handle the crop, we have reference to the Winnipeg dealers. Of course there is a portion of the crop that is not handled by Winnipeg dealers. There are flour mills at many points which require more or less wheat, and there are also dealers at many country markets who buy and ship wheat, who are not represented in Winnipeg. The great bulk of the crop, however, is handled by Winnipeg grain men, and much of the grain bought by independent country dealers is sold in car lots through Winnipeg commission dealers, so that speaking generally, we may say that the grain trade of the west is handled by Winnipeg parties.

First on the list of large grain handlers, we may mention the two big milling concerns—The Ogilvie Milling company and the Lake of the Woods Milling company.—Both these companies have elevators and buyers at country markets throughout the wheat belt, and between them they handle several million bushels of the crop. The Hudson's Bay company, which operates a flour mill in Winnipeg, does not have buyers out in country points. They get a good deal of wheat at the mill door in Winnipeg, and buy the balance of their requirements in car lots.

Besides the millers, perhaps the most widely known grain company is the Northern Elevator company. This company was formed by the amalgamation of several of the local grain firms. At first the firms worked together under a sort of pooling arrangement, but later a complete stock company form was adopted, and the individual firms have now ceased to exist and have been merged in one company. The old firms known as Martin, Mitchell & Co., R. D. Martin, & Co., N. Bawlf, Crowe & Co., and S. P. Clarke & Co., are the concerns

merged in the Northern Elevator Co. The company owns 102 buildings at country points for taking in grain from farmers, all but a few of which are fully equipped elevators, and the balance flat warehouses. The company will buy grain this season at not less than 125 country points in all. Wm. Martin has been elected manager of the company this year, succeeding G. R. Crowe, who was at the head last year.

Two new grain companies were formed a year ago, which are in the field for as much of this crop as they can get hold of. One of these is the Manitoba Grain Co. This company was also formed by the amalgamation of a number of dealers, but in this case they were not Winnipeg firms, but dealers operating at country points. The head office of the new company was naturally established in Winnipeg. W. A. Walker, who was the leading spirit in the organization of this company, has been succeeded this year in the management by W. L. Parrish and J. A. Thompson. The Manitoba Grain Co., though only in their second year, own forty elevators at country points, and will buy grain this season at about sixty points in all.

The other new grain company formed a year ago is the Dominion Elevator Co. This company controls a large line of grain warehouses and elevators at country points and will buy grain at over 100 country markets. The company is composed of a number of different grain firms who work on the pooling principle. The firms represented in the concern are Roblin & Leary, D. H. McMillan & Co., Jos. Harris, R. Muir & Co., and S. A. McGaw. These firms are to a certain extent independent. They buy grain separately, but their purchases all go in together and are sold through what they call their clearing house, which is managed by R. P. Roblin. The effect of the organization of these strong companies, by the amalgamation and co-operation of different firms and dealers, has been to reduce the cost of handling wheat, which is now bought on a much closer margin than formerly. The large quantity of grain handled also enables these companies to maintain special agents at New York and in Great Britain, to look after the direct sale of their wheat.

Another new concern which started in business in a very vigorous fashion last year is the firm of Bready, Love & Tryon. This firm built a number of new elevators last year, and they have added to the number this year, giving them 26 elevators in all at country points, all new and modern buildings.

H. S. Patterson, who worked with the Dominion Elevator Co. last season, is this year doing business alone. He has opened an office at Room 19, in the Grain Exchange building. In addition to handling car lots, Mr. Patterson will have buyers on about ten country markets.

Another change in the trade is the dissolution of partnership of J. K. McLennan and W. C. Graham, grain merchants. Each will continue alone. Mr. McLennan has taken a room in the grain exchange and will buy at a dozen or more country points. Mr. Graham will open an office here shortly, and will also buy at some country points.

W. D. McBean, who has been with D. G. McBean & Co., will do business alone this season. D. G. McBean, who is one of the pioneers of the Manitoba

(902)



# WHEAT BRAN OATS FLOUR



POTATO

# BAGS

—FOR—

EVERY PURPOSE



WRITE FOR SAMPLES AND PRICES



**E. NICHOLSON, 124 PRINCESS STREET, WINNIPEG**

Manitoba and Northwest Agent for THE CANADA JUTE CO., Limited, Montreal

## OUT OF EVERY TEN GROCERS

Who have tried **Edwardsburg Starch**  
TEN have been completely satisfied with it.  
Have you tried it?

FOR SALE BY ALL WINNIPEG WHOLESALE GROCERS

**Edwardsburg Starch Co. Cardinal, Ont**

E. NICHOLSON, Wholesale Agent, 124 Princess Street, Winnipeg.

## FIRE NOTICE

We regret to advise our friends that, on the morning of the 4th May, our Factory was destroyed by fire. Re-building is already well under way, and we hope to soon be ready to fill all orders.

**THE TRURO CONDENSED MILK AND CANNING CO.**

TRURO, N. S.

E. NICHOLSON, 124 Princess Street, Winnipeg, Wholesale Agent.

grain trade, and who was one of the first to build elevators throughout the country, will continue business as grain broker and commission merchant.

Thompson, Sons & Co., are almost a new firm for Winnipeg this season, as they did not come here until the fall end of last crop was moving. They were, however, well known to the trade through having formerly been in business at Brandon, and later at Fort William.

Alex. McPhoe & Co., a well known Eastern Canada firm of grain exporters, have done business here for some years. H. D. Metcalfe is the local manager, and through his connection east he is enabled to do a good trade in car and round lots for export and eastern milling trade.

S. Spink is also one of the old timers, who has been connected with the trade ever since it began to amount to anything worth mentioning. Mr. Spink does not buy in country markets, and confines himself to car and round lot transactions.

Arch. McBean & Son have also long been known in connection with the Winnipeg grain trade. They do a general grain business in car and round lots, but do not have buyers in country markets.

The Canada Northwest Elevator Co. owns a line of six country elevators, which are operated by Reid & Co., as agents for the company, doing a general grain trade in car lots, etc., as well as buying in country markets.

A. Atkinson has been known in connection with the Winnipeg grain trade for many years. He proposes continuing in the trade for this crop.

E. O'Riley buys grain at a number of country points and is also in the market for car lots, which he handles through a good Eastern Canada connection.

S. W. Farrell & Co. do business as brokers and grain commission dealers. Mr. Farrell has grown hoary in the grain trade, and is one of the features of the Winnipeg Grain Exchange.

An entirely new firm this season—the only one so far announced, is that of Campbell & Co. A. P. Campbell of this firm, is well known in grain trade circles, having been with the Dominion Elevator Co. last year, and with other grain men previous to that. Mr. Campbell will open an office in the grain exchange building as soon as he can secure suitable rooms.

W. Gibbons & Co. propose continuing in the trade this season as brokers and grain commission dealers.

Bruce McBean does a purely brokerage business, and does not buy or handle any grain on his own account.

The option end of the Winnipeg grain trade is represented by W. Beech, who gathers grain trade news from the ends of the earth and posts it up on big blackboards and in bulletins for the information of the trade.

J. D. O'Brien, option broker, has recently opened a business in Winnipeg, in a building convenient to the Grain Exchange.

This somewhat lengthy list of Winnipeg grain companies, firms and individual dealers will indicate the importance of this city as a grain centre and at the same time show that there is no lack of competition in the Manitoba grain trade.

The grain trade is now looking forward anxiously to the completion of the fine new grain exchange building, now being erected by N. Baswell, a gentleman who may almost be considered the father of the local grain trade.

Statistical Wheat Reports.

WHEAT IN CANADA

Stocks of Wheat in Canada at principal points of accumulation are reported as follows:

Montreal . . . . .	28,000
Toronto . . . . .	12,000
Kingston . . . . .	4,000
Winnipeg . . . . .	75,000
Manitoba elevators . . . . .	80,000
Fort William, Port Arthur and Keewatin . . . . .	228,000

Total August 27 . . . . . 427,000

BRADSTREET'S REPORT OF STOCKS.

Total stocks in the United States and Canada, east of the Rocky Mountains as reported by Bradstreet's on Aug. 27, were 8,605,000 bushels.

Total stocks in the United States and Canada a year ago were 20,362,000 bushels, according to Bradstreet's report.

Pacific coast wheat stocks on Sept. 1 were 3,065,000 bushels, compared with 4,615,000 bushels a year ago.

THE VISIBLE SUPPLY.

The Chicago visible supply statement of stocks in the United States and Canada, east of the Rocky Mountains for the week ended September 3, was 7,127,000 bushels, being an increase of 1,220,000 bushels for the week. A year ago the visible supply was 14,817,000 bushels, two years ago 48,465,000 bushels, three years ago 36,754,000 bushels.

WHEAT STOCKS AT U.S. POINTS.

Chicago . . . . .	440,000 bushels
Duluth . . . . .	854,000 "
Minneapolis . . . . .	970,000 "
New York . . . . .	144,000 "
Buffalo . . . . .	303,000 "

STOCK OF OATS AND CORN.

The visible supply of oats in the United States and Canada, east of the Rocky Mountains is 4,239,000 bushels, compared with 9,543,000 bushels a year ago. The visible supply of corn is 16,854,000 bushels, compared with 31,220,000 bushels a year ago, according to the Chicago statement.

WORLD'S WHEAT STOCKS.

Stocks of wheat in the United States, Canada, in Europe and afloat for Europe, on Aug. 1, for a series of years, were as follows, Bradstreet's report: August 1, 1893, 59,533,000; Aug. 1, 1897, 64,040,000; August 1, 1898, 108,331,000; Aug. 1, 1895, 140,417,000.

CROP MOVEMENT.

The following table gives the receipts of wheat at the four principal United States spring wheat markets from the beginning of the crop year, August 1, 1898, to date, compared with the same period of last year:

	This Crop	Last Crop
Minneapolis . . . . .	5,824,390	4,406,330
Milwaukee . . . . .	930,745	1,032,222
Duluth . . . . .	3,394,997	2,247,900
Chicago . . . . .	3,742,154	5,280,490

Total . . . . . 13,892,286 12,966,942

The following table gives the receipts of wheat at the four principal United States winter wheat markets from the beginning of the crop movement, July 1, 1898, to date, compared with the same period of last year:

	This Crop	Last Crop
Toledo . . . . .	543,916	5,363,775
St. Louis . . . . .	3,184,358	4,310,805
Detroit . . . . .	1,349,215	1,559,793
Kansas City . . . . .	6,935,200	9,470,300

Total . . . . . 16,900,689 20,707,763

WINNIPEG GRAIN AND PRODUCE EXCHANGE

President, ROBT. MUIR

Vice-President  
JOS. HARRIS

Secy.-Treas.  
CHAS. N. BRILL

WHEN YOU HAVE  
NO. 1 HARD WHEAT  
OR OTHER GRAIN  
FOR SALE



Write or wire to

THOMPSON, SONS & Co.

Grain Brokers and  
Commission Merchants

WINNIPEG, MAN

They will get you the best prices  
in the market

DUNCAN G. McBEAN & CO

BROKERAGE  
and COMMISSION  
MERCHANTS

Room 5, Grain Exchange Building  
WINNIPEG  
MANITOBA

Grain and all kinds of country produce handled

ALEX. McFEE & Co.

GRAIN EXPORTERS

Board of Trade Bld'g Room 18, Grain Exchange  
MONTREAL WINNIPEG

WHEAT OATS BARLEY

H S. PATERSON

GRAIN DEALER

Room 19, Grain Exchange WINNIPEG

Country shippers are solicited to write or wire for prices. Liberal advances made.

P.O. Box 570.

NOTICE TO MILLERS AND OTHERS

The rural municipality of Assiniboia in Manitoba, is prepared to grant a bonus of \$3,000 to any person who will build and operate a 75 barrel grist mill at the parish of Headingly, Manitoba. For further particulars apply to R. Ross Sutherland, Esq., Arrister, Winnipeg, or to the undersigned.

FRANK NESS, Sec.-Treas.,  
Municipality of Assiniboia

St. Charles P.O., Man.

# FANCY GOODS, DOLLS AND TOYS

IN ASSORTED CASES

We invite all DEALERS who cannot see our Samples either on the road or in our Sample Rooms, to send in their orders for ASSORTED CASES from \$20 upwards. All such orders will receive PROMPT AND CAREFUL ATTENTION. 5% discount for cash. Order EARLY, so as to allow time to repeat if necessary. Largest Assortments. Biggest Stocks and Right Prices.

The H. A. Nelson & Sons Co., Limited

Ontario Sample Rooms  
56 and 58 Front St. West, Toronto

59 to 63 St. Peter St., Montreal

# Granby Rubber Company

**GUM RUBBERS and  
OVERSHOES**

Of Every Description

COMPLETE STOCK CARRIED IN WINNIPEG

.. **BUY GRANBY AND YOU GET THE BEST** ..

Write us for Illustrated Catalogue and Price List.

The Trade Only  
Supplied:

**THE AMES HOLDEN COMPANY Ltd.**

## CAR LOAD OF ACIDS . . .

Muriatic, Nitric and Sulphuric. Commercially Pure and Chemically Pure. We are able to quote favorable figures for soda water manufacturing, assaying, mechanical and chemical purposes.

Also a full supply of Crucibles, Muffles, Cupels and Scorifiers.

## CAR LOAD MINERAL WATERS . . . .

Including Hunyadi, Vichy and Apenta Water. Write us for prices.

## CAR LOAD TANNERS' SUPPLIES . . . .

Extracts, Colors and Chemicals.

Also full range of Drugs, Patent Medicines and Sundries.

*The* **Bole Drug Co**

WINNIPEG

**Rainy River Gold Mine.**

L. A. Morrison, manager of the above company, has spent four months visiting the districts where the company's properties are located, and is now thoroughly familiar with the locations. Jas. E. Harrison, mining engineer, has been appointed to the charge of the field work. The company now owns seven properties, four at Andrew Bay, two three miles west of Keewatin, and mining location No. 289P, near the Scramble mine, close to the C. P. R. Operations have begun on the latter property. The property has been termed the Winor.

The company is capitalized at \$1,000,000 in \$1 shares, of which \$16,000 shares are still held, and of this \$0,000 shares are being offered at 10 cents. Some 12,000 shares have been exchanged for properties, 22,000 have been sold at 10 cents, and 150,000 are retained by the promoters. It is not proposed to sell more than the \$50,000 stock at present. The company will also handle prospects and mines, after they are reported on by the engineer. At a recent meeting of the directors the following officers were elected: C. E. Neads, president; J. G. Murdoch, vice; Jas. Weldman, secretary-treasurer; Llewellyn A. Morrison, managing director. A very favorable report has been received from the mine since operations began, and it is hoped to soon have some shipments of ore for the Keewatin Reduction works.

**Freight Rates.**

Ocean rates are stronger and higher at 21-4d from New York to Liverpool.

Grain is moving; 17 1-2c on corn and 18c on flour and other grains from Chicago to New York.

Through rates from Chicago to Liverpool are 10c per bushel on wheat and 10c on corn. Flour is 22 1-2 to 23 1-4c per 100 lbs.

Lake rates from Chicago to Buffalo quoted at 11-4 to 13-8c on wheat, 11-3c on corn and 1c on oats. Corn to Kingston at 21-2c.

It is reported from St. Paul that the Great Northern will make sharp reductions in freight rates in its territory, which includes Minnesota and the Dakotas.

The railway rate war is practically settled by consent of the Canadian Pacific to abide by the decision of the Interstate commerce commission, which decided that the company was not entitled to a preferential.

**Dry Goods Trade.**

Canadian manufacturers' agents have received their samples of Magog prints for the spring of 1899, and the wholesale traders are having a look at them, and so far have been much pleased with their appearance.

The Riverside cotton mill at Montmorency, Que., is to be enlarged considerably. Three new flats are being added to the old building, which will make a splendid structure. The Montmorency Cotton Company's mill is also being extended by some ninety feet.

By arrangement between the Montmorency and the Riverside cotton factories at Quebec, which recently amalgamated, and the Dominion cotton company, Montreal, the latter company will not meet with any competition in future in grey cotton from the former in the home market. Prac-

**IT REACHES THE TRADE**



Advertise Businesses for Sale; Stocks of Goods for Sale; Situations Vacant or Wanted in Business Establishment, etc., in

**THE COMMERCIAL**



The only Journal that reaches the trade of Western Canada from Lake Superior to the Pacific.....

Special Low Rates for Situations Wanted or Vacant

tically the same individuals own a controlling interest in all factories. The Montmorency and Riverside will in future be under our management.

**Boots and Shoes.**

The Montreal Trade Bulletin says. Boot and shoe manufacturers here and in Quebec are receiving very little new business, and very little improvement is expected before October. Travellers will be out on their sorting trips early this year, and some, we are informed, have their spring samples ready to take out at the same time. As one manufacturer said: "Of course, I do not expect to take many orders, but as my spring samples are ready, I may just as well show them." There is not as much change between the fall and spring styles as in former years. Remittances have shown some improvement, although they might be better.

**Winnipeg Prices a Year Ago.**

Following were Winnipeg prices this week last year:

Wheat—No. 1 hard, in store Fort William, \$1.02 1/2 old wheat spot; 78@82c was being paid to farmers for new wheat.

Flour—Local price per sack: Patent, 2.60@2.65; Bakers, 2.40@2.45.

Bran—Per ton, \$8.00. Shorts—Per ton, \$10.00.

Oats—Per bushel, car lots on track, Winnipeg, 28@29c.

Barley—A load of new sold at 30c here.

Butter—Dairy, Shippers buying at 10@12c, and 18 1/2c paid for creamery at the factory.

Cheese—8 1/2@9c paid to factories.

Eggs—Buyers paying 1 1/2c net.

Beef—City dressed, fresh, 4 1/2@5c.

Mutton—5 1/2@6 1/2c.

Hogs—Dressed, 6 1/2c.

Veal—5@7c.

Lambs—7@8c.

Cattle—Butchers 2@2 1/2; export 3@3 1/2c.

Hogs—Live, off cars, \$4.75 per 100 lbs for best bacon.

Sheep—2 1/2@2 3/4c off cars here; lambs, 3 1/2@4c.

Seneca Root—16c lb.

Hay—\$5.50 to \$6.00 per ton for baled on cars here.

Potatoes—20@25c per bushel.

Hides—No. 1 green, 6 1/2@7c.

Wool, 8@8 1/2c.

**LEADING COMMERCIAL HOTELS**

**HOTEL LELAND**

Headquarters for Commercial Men  
City Hall Square, Winnipeg

**HILLIARD HOUSE**

LOUIS HILLIARD, Prop.  
First class accommodation for Commercial Men  
RAT PORTAGE, ONT.

**HOME WORK FOR FAMILIES**

We want a number of families to do work for us at home, whole or spare time. The work we send our workers is quickly and easily done, and returned by parcel post as finished. Good money made at home. For particulars ready to commence send name and address.

THE STANDARD SUPPLY CO.,  
Dept. B., LONDON, ONT.

**AGENTS.**

I am just starting the best thing for money making you have seen for many a day. Your name and address will bring the golden information.

T. H. LINSOTT, Toronto.

**WANTED.**

Industrious man of character to travel and appoint agents. Salary and expenses paid.

BRADLEY-GARRETSON COMPANY,  
LIMITED, TORONTO.

**AGENTS.**

Two editions "Life and Work of Mr. Gladstone" already sold. Third edition just ready. Now is the time to make money. Look here, one man sells it his first day, a fourteen-year-old boy 26 in evenings during one week, another 27 in 15 hours, and another 90 in 14 days, etc., etc. Great-st book-agent's bonanza on the market. Big commission paid. Write quick for free particulars.

BRADLEY-GARRETSON CO., LIMITED,  
TORONTO.

**SITUATION WANTED**

By two thoroughly experienced Pork Butchers, competent in all branches of the business. Address

X. Y. Z.,  
Care The Commercial

**SITUATION WANTED**

As Miller, seven years practical experience. Competent to take charge of mill. Would like permanent position. References. Address

ROLLA MILLA  
Care Commercial

**BUSINESS FOR SALE**

A prosperous General Store Business for Sale in the thriving town of Gladstone. Apply to

J. W. WOOLFE,  
Gladstone, Man.

**PLEASE NOTIFY**

Subscribers are requested to notify this office of any irregularity in the receipt of THE COMMERCIAL. A post card will be sufficient.

# LET THE HEAT COME!

No trouble now to handle BUTTER and keep it firm and fresh. The new way is a pleasure compared to the old way. If it goes into our Ammonia Cold Storage Rooms fresh, it comes out fresh. If it goes in bad it comes out bad. At any rate it always brings the top price according to grade. Send yours to us.

## J. Y. GRIFFIN & COMPANY

Pork Packers and Commission Merchants, Winnipeg and Vancouver.

# ALFRED DOLGE FELT SHOES

220 CASES

10,000 PAIRS

The largest single shipment of FELT SHOES ever made in America. These arrived and were placed in stock August 31st, being much earlier than ever before. This is only the FIRST shipment this season. There are more to follow.

### JUST A WORD

You are chasing hard after the "Evasive Dollar" aren't you? Then let me quote prices on ARCTIC SOX and MOCCASINS. Heavy stock on hand.



## ARTHUR CONGDON

Sole Agent in Canada for Alfred Dolge Felt Shoes

One Block in rear of P.O.

COR. RORIE and McDERMOTT ST. E.  
WINNIPEG, MAN.

**Winnipeg Hardware and Metal Prices.**

Tin—Lamb and Flagg, 56 and 28 lb ingots, per lb 10@20c.

Tin Plates—Charcoal plates, I C, 10 x 14, 12 x 12 and 14 x 20, \$4.50@4.75; I X, same size box, \$5.75@6; I C, charcoal, 20 x 28, 112 sheets to box, \$8.50@9; I X, box, 20 x 28, 112 sheets, \$10.50@11.

Terne Plates—I C, 20 x 28, \$8.50 @ 9. Iron and Steel—Bar iron, 100 lbs., base price, \$2.05 band iron, 100 lbs., \$2.65@2.75; Swedish iron, 100 lbs, \$5.25 @6; sleigh shoe steel, 2.75@3; best cast tool steel, lb., 9@11c; imitation Russian sheet, 7@8c; genuine Russian sheet, lb., 12@13c.

Sheet Iron—10 to 20 guage, \$3; 22 to 24 and 26 guage, \$3.25; 28 guage \$3.50.

Canada Plates—Garth and Blaina, 3.00 @3.15.

Galvanized Iron—American, 20 guage, \$3.75; 22 and 24 guage, \$4; 26 guage, \$4.25; 28 guage, \$4.50 100 lbs.

Iron pipe is quoted as follows per 100 feet: 1/2 inch, \$2.50; 3/8 inch, \$2.75; 1/2 inch, \$3; 5/8 inch, \$4; 1 inch, \$5; 1 1/2 inch, \$7; 2 inch, \$8.50; 2 1/2 inch, \$11.50.

Lead—Fig, per lb., 4 1/2 to 5c.

Sheet Zinc—In casks, \$6.50 lb., broken lots \$7.00.

Solder—Half and half (guar) per lb., 14@16c.

Ammunition—Cartridges—Rim fire pistol, American discount 40 per cent; rim fire cartridges, Dominion, 50 and 5; rim fire military, American, net list; central fire pistol and rifle, American, 12 per cent; central fire cartridge, Dominion, 30 per cent, shot shells, 12 guage, \$6 @ 7.50; shot, Canadian, soft, 6 1/2 c; shot, Canadian, chilled, 6 1/2 c. Robin Hood powder, 17 lb kegs, \$10; 1/2 kegs, 4 1/2 lbs, \$3; Causter, 9 oz., 60c. Loaded shells, 12 guage, soft shot, \$18 per 1,000. No. 10 guage, \$20.70 per 1,000.

Dupont Powder—Dupont Rifle FFG, 25-lb keg, \$5.00, 12 1/2 lb keg, \$2.75, cases of 4 6 1/2 lb kegs, \$6.60, cases of 24 1 lb canisters, \$8.50, cases of 48 1/2 lb canisters, \$9.25; Dupont Rifle FFFG, 25 lb keg, \$5.25, 12 1/2 lb keg, \$3.00, cases of 4 6 1/2 lb kegs, \$7.00, cases of 24 1 lb canisters, \$9.00, cases of 48 1/2 lb canisters, \$9.75; Dominion Rifle, 25 lb keg, \$5.75, 12 1/2 lb keg, \$3, cases of 4 6 1/2 lb kegs, \$7, cases of 24 1 lb canisters, \$11, cases of 48 1/2 lb canisters, \$12; Sea Shooting Fg, 25 lb keg, \$6; Manitoba Sporting, 25 lb keg, \$8.00, 12 1/2 lb keg, \$4.25, cases of 4 6 1/2 lb kegs, \$9.00; cases of 24 1 lb canisters, \$13.00; Eagle Ducking, 25 lb keg, \$11.00, 12 1/2 lb keg, \$5.75, cases of 4 6 1/2 lb kegs, \$12.00; Crystal Grain, cases of 4 6 1/2 lb kegs, \$14.00, cases of 24 1 lb canisters, \$17; Blasting, 25 lb keg, \$8.00. Dupont Smokeless powder, 12 1/2 lbs, \$22.00, 6 1/2 lbs, \$11.25, 3 1/2 lbs, \$5.75, 1/2 canisters, \$1.00.

Wire—Galvanized barb wire, \$2.50 per 100 lbs.; Plain wire and staples, \$3.00.

Axes—Per box, \$6@9.

Nails—Cut, keg, base price, \$2.15 for 20 to 60d., with new classification of extras; common steel wire nails, 4 1/2 @ 6 inch, \$2.35 per keg, with usual extras for smaller sizes

Horse Nails—Pointed and finished, oval heads. List price as follows: No. 5, \$7.50 box No. 6, \$6.75 box; No. 7, \$6 box; No. 8, \$5.75 box No. 9, 10 and 11, \$5.50 box. Discount of above list prices 5 per cent.

Horseshoes—Iron shoes, \$4.00; steel hoos, \$4.25; Snow shoe, \$4.25 per keg.

Rope—Sisal, lb., 12c base; manilla, lb., 13c base; cotton, 1/2 to 1/2 inch and larger, 16c lb.

Building Paper—Anchor brand plain 45c; do tarred 65c; Jubilee plain 67c; do tarred 73c.

**Winnipeg Prices of Paints, Oils, Glass, etc.**

Following are close jobbing prices, as to quantity:

White Lead—Pure, \$0.50 100 lbs; No. 1, \$5.50.

Prepared Paints—Pure liquid colors, gallon \$1.15@1.25.

Dry Colors—White lead, pound, 7c; red lead, kegs, 6c; yellow ochre in barrel lots, 2 1/2c; less than barrels, 3c; golden ochre, barrels, 2 1/2c; less than barrels, 4c; Venetian, red, barrels, 3c; less than barrels, 3 1/2c; American vermilion, 15c; English vermilion, \$1 per lb., Paris green, 18@20c; Canadian metallic oxides, barrel lots, 2 1/2c; less than barrel lots, 3c; English purple oxides, in casks, 3 1/2c; less quantities 4c lb.

Varnishes—No. 1 furniture, per gallon, \$1; extra furniture, \$1.35; pale oak, \$1.50; elastic oak, \$1.75; No. 1 carriage, \$1.50@1.75; hard oil finish, \$1.50@2; brown Japan, \$1; house painters' gold-size Japan, \$1.50; coach painters' do., \$2 @2.25; No. 1 orange shellac, \$2; pure orange shellac, \$2.50.

Sundries—Glue, sheets, 15c lb; broken, 12 1/2c; glue, white, for kalsomining, 16@25c. Stove gasoline, case, \$3.50; benzine, case, \$3.50. Axle grease, imperial, case, \$2.50; Fraser's axle grease, case, \$3.75; Diamond axle grease, \$2.25 case. Coal tar, barrel, \$7. Portland cement, barrel, \$4@4.25; plaster, barrel \$3.00; plasterers' hair, P. P., 90c bale. Putty, in bladders, barrel lots, 2 1/2c lb., do., in 100 lb kegs, 2 1/2c., do., less than barrels, 1b, 3c. Alabastine, cases of 20 pkgs., \$6.50@7.50 as to color.

Window Glass—First break is quoted at \$1.80 per box of 50 feet and \$2.05 for second break.

Linseed Oil—Raw, gal., 55c; boiled, gal., 58c in barrels; less than barrels, 5c gallon extra, with additional charges for cans.

Turpentine—Pure spirits in barrels, 55c; less than barrels, gallon, 60c. An additional charge for packages for small quantities.

Oils—Range about as follows: Black oils, 25@30c gallon; clear machine oils, 27@30c; cylinder oil, 50@75c, as to quality; castor oil, 13c per lb; tanners' or harness oil, 65c; neatsfoot oil, \$1; steam refined seal oil, 85c; pure winter bleached sperm oil, \$2 gallon.

Refined Petroleum—Prices here are as follows: Silver star, 19c; crescent, 20 1/2c; oleophene, 21c in barrels. Car lots, 1c gallon less. United States oils in barrels are quoted at 2 1/2c for cocene and 2 1/2c for sunlight.

**Winnipeg Lumber Prices.**

These prices are retail quotations at Winnipeg, such as contractors and others buy at. The mills quote delivered prices at Winnipeg, plus freight to outside points.

Dimension and Timber—No. 1, 2x4 to 2x12, 12, 14 and 16 ft, \$18.50, 18 ft, \$19.50, 20 ft, \$20.50, 22 ft, \$21.50, 24 ft, \$22.50; 3x6 to 3x12, 4x4 to 4x12, 6x6 to 6x12 and 8x8, 12, 14 and 16 ft, \$20.00, 18 ft, \$21.00, 20 ft, \$22.00, 22 ft, \$23.00, 24 ft, \$24.00; 8x10 to 12x12, 12, 14 and 16 ft, \$22.00, 18 ft, \$23.00, 20 ft, \$24.00, 22 ft, \$25.00, 24 ft, \$26.00; 2x4, 10 ft, \$20.50; 2x6 to 2x 12, 10 ft, \$18.00. No. 2 dimen-

sion, \$2.00 less than No. 1. Dimension, 26, 28 and 30 ft, \$26.00. Timber, 26, 28 and 30 ft, \$28.00. \$1.00 per M advance on each inch over 12 inch in depth and width. Tamarac dimension same price as pine. Spruce dimension at \$2.00 per M less than pine. Cull plank, all widths at \$12.00 per M. B. C. fir dimension up to 32 feet at \$28.00 per M., 33 to 40 feet, \$30.00, 41 to 60 feet \$38.00. \$1.00 per M extra for each 2 in. over 12 in. in width or depth.

Boards—1st common, red pine, \$25.00, 2nd common, \$18.50, 3rd common, \$16.50; No. 1 cull, \$13.00, No. 2 cull, \$9.00; spruce, \$16.50. \$1.00 per M extra for stock boards. \$2.00 per M less for 6 to 8 ft. and under. \$1.00 per M less for 10 ft. No. 1 box, 14 in. and up, \$30.00, No. 2 box boards, 14 in. and up, \$23.00. Extra dressing \$2.00 per M.

Siding, Flooring and Ceiling—2nd, 4, 5 and 6 inch, white pine, \$36.00; 3rd, 4, 5 and 6 inch white pine, \$28.00; 1st and 2nd, 4, 5 and 6 inch red pine, \$30.00; 3rd, 4, 5 and 6 inch red pine, \$25.00; 4th, 4, 5 and 6 inch, red and white, \$20.00; Cull siding, red and white, \$16.00; B.C. No. 1 and No. 2 edge grain flooring, 3, 4 and 6 inch, \$32.00. \$2.00 per M advance for dressing both sides.

Bevel Siding—No. 1 white pine, \$26.00; No. 2 red and white, \$23.00.

Shiplap—Pine, 6 inch, \$18.00, 8 and 10 inch, \$20.00; Spruce, 6 and 10 inch, \$19.00, 6 inch, \$18.00; cull shiplap, 8 and 10 inch, \$17.00; do., 6 inch, \$14.00.

Shingles—B.C. cedar, per M, No. 1, \$2.75, No. 2, \$2.50; B.C. cedar dimension shingles, \$4.00; B.C. cedar dimension band sawed, \$5.00.

Lath—Pine lath, No. 1, per M, \$3.00. No. 2, \$2.50.

Finishings—1 1/2, 1 1/2 and 2 inch—White pine, 1st and 2nd clear, \$65.00, 3rd clear, \$55.00, selects, \$45.00, shops, \$36.00; red pine, clear, \$40.00, selects, \$32.00; B.C. cedar clears, \$50.00; do., over 12 inch, \$55.00; B. C. fir edge grain No. 1 stepping, \$45.00; No. 2, \$40.00; B.C. fir, flat grain, No. 1, \$37.00; No. 2 do., \$32.50; B.C. finishing up to 12 in., \$37.50; do., over 12 inch, \$42.50. \$5 per M advance on 2 1/2 inch and thicker. One inch—White pine, 1st and 2nd clear, \$55.00, 3rd clear, \$48.00, selects, B, \$38.00, selects, C, \$30.00; red pine, clear, \$40.00, selects, \$30.00; B.C. cedar, clear, \$50.00. B.C. fir finishing, \$37.50; do. over 12 inch, \$42.50.

Oak—Red and White—1/2 sawed, \$85.00; 1st and 2nd, 55.00 to \$65.00; common, \$40.00.

Mouldings and Base—Parting strips, 100 feet lineal, 60c; lattice, 1x1 1/2, 100 feet lineal, 75c, 1x1 1/2, 100 feet lineal, 85c; window and door stop, 1 1/2 inch lineal, \$1.25, ditto, 2 inch lineal, \$1.50; 1/2 round and 1/2 cove, 75c; 1 1/2 inch mould, \$1.50; 2 inch mould, \$1.75; 2 1/2 inch mould, \$2.00; 3 inch mould, \$2.25; 3 1/2 inch mould, \$2.50; 4 inch mould, \$2.75; 4 1/2 inch mould, \$3.00; 5 inch mould, \$3.25; 6 inch mould, \$4.00; 5 inch window stool, 1 1/2 \$4.50; 6 inch window stool, 1 1/2, \$5.25; 4 inch casings, \$2.25; 5 inch casings, \$2.75; 6 inch casings, \$3.25; 8 inch base, \$4.25; 10 inch base, \$5.00; 12 inch base, \$7.00; hand rail, 2x4, \$5.50; wainscot cap, 2 1/2 inch, \$2.35, 3 inch, \$2.75; paper mould, 60c. Moulding made from 1 1/2 stock add 25 per cent; 1 1/2 add 50 per cent. Hardwood mouldings or mouldings to detail at special prices. All shop work at special net prices.

# JUBILEE JAM

Made from CHOICEST GARDEN FRUIT grown in the famous Niagara district. Jubilee is the PEER of all Jams. For sale by

## JAMES TURNER & CO.

Western Representative:  
SAMUEL VILA, CALGARY

Wholesale Grocers, Hamilton, Ont.

## Silver-Plated Faith . . . .

Silver plate is bought on faith—the purchaser cannot measure the thickness of the plate. This trade **W. ROBERTS.** mark is the assurance of Simpson, Hall, Miller & Co., the manufacturers, that the Knives, Forks or Spoons that bear it are the best of silver plate—“the kind that wears.”

**SIMPSON, HALL, MILLER & CO**  
Wallingford, Conn., U.S.A.  
and Montreal, Canada

## J. & A. CLEARHUE

COMMISSION MERCHANTS

DEALERS IN

### Fruits and all kinds of Produce

Special attention to consignments of Furs and Skins, Butter and Eggs . . . .

YATES STREET, VICTORIA, B. C.

P. O. BOX 586.

Agents for D. Richards, Laundry Soaps, Woodstock, Ontario. We have a large cool warehouse with good facilities for handling butter and produce in quantities. Consignments received in all lines. Correspondence solicited.

## W. H. MALKIN & CO.

VANCOUVER, B. C.

Dealers in

### BUTTER, CHEESE, EGGS

Choice California and Local Fruits

OUR SPECIALTY—Consignments of produce from Manitoba and Northwest Territories. Prompt returns made on the 15th of each month

TRY US.

GENUINE

# OAK BELTING

LEATHER BELTING, LANCASHIRE HAIR  
ENGLISH CARD CLOTHING

Head Office and Factory  
Victoria Square, MONTREAL

## D. K. McLAREN

Stock Depots—OTTAWA, GALT

## DOMINION PURCHASING AGENCY

Readers requiring to purchase Goods of any kind—Dry Goods, Carpets, Groceries, Shoes, Hats, Furs, Hardware, Jewellery, Crockery or Glassware, Furniture, Stoves, Bicycles, Sewing Machines, Organs, Pianos and Musical Merchandise generally, or in brief any articles manufactured or dealt in by wholesale or retail, or departmental merchants at home or abroad—can have special terms by addressing

### The Dominion Purchasing Agency

Saturday Night Buildings

TORONTO

N.B.—Samples, if not too heavy, will be sent to intending purchasers. Correspondence invited. Reference may be had to The Commercial.

When in need  
of  
**GARDS.**  
**INVOICES**  
**NOTE & LETTERHEADS**  
**GENTILETTES & STICK**  
ETC. ETC.  
**HALF-TONES**  
**ONLINE AND ENGRAVING**  
GIVE US A CALL  
**PRINTERS LITHO ENGRAVING CO.**  
**WINNIPEG.**

The P. L. E. Co. have moved to 263 McDermot Ave., Winnipeg

### We Give An Absolute Guarantee

that the following well-known brands of Cigars are clear Havana filled goods, viz., KHEDIVE, RED CROSS, REPUBLIC, LA HISPANIA and ODETTE.

**GEO. F. BRYAN & CO**

Cigar Manufacturers, Winnipeg.



WINNIPEG PRICES CURRENT

GROCERIES

Prices to retail dealers for ordinary lots, with usual discounts for cash or large lots.

Table listing various grocery items such as Apples, Peaches, Pears, and other fruits with their respective prices per case or per dozen.

Table listing sardines and other preserved fish products with prices per case.

Table listing various types of canned meats including Corn Beef, Lunch Meat, and Roast Beef.

Table listing different varieties of Potted Ham and Potted Tongue.

Table listing coffee grades such as Green Rio and Superior grades.

Table listing various cereal products including Split Peas, Pot Barley, and Standard Oatmeal.

Table listing different types of rice like Rice, B., Patna, and Rice, Japan.

Table listing various cigarette brands such as Old Judge, Athlete, and Sweet Caporal.

Table listing cured fish products including Boneless Hake, Codfish, and Herrings.

Table listing dried fruits such as Currants, Raisins, and Prunes.

Table listing dried fruits like Raisins, Loose Muscatels, and London Layers.

Table listing California evaporated fruits including Peaches, Pears, Apricots, and Prunes.

Table listing various types of matches.

Table listing different types of nuts such as Brazil, Almonds, and Walnuts.

Table listing various syrups including Extra Bright, Medium, and Maple.

Table listing different grades of sugar like Extra Standard Gran. and Maple Sugar.

Table listing various types of salt including Rock Salt and Dairy.

Table listing different types of dairy products like white duck sack and fine jute sack.

Table listing various spices and herbs.

Table listing different types of allspice and cassia.

Table listing various types of pepper and ginger.

Table listing different types of tea including China Black and Indian and Ceylon.

Table listing various types of tobacco like T. & B., Lilly, and Crescent.

Table listing wooden ware products such as Pails, Tubs, and Butter Tubs.

Table listing cured meats and lard products.

Table listing smoked meats like Hams, Breakfast bacon, and Spiced rolls.

Table listing dry salt meats including Long clear bacon and Shoulders.

Table listing barrel pork products like Heavy mess and Shortcut.

Table listing meat sundries such as Fresh pork sausage and Bologna sausage.

Table listing fresh fish products including Whitefish, Pickerel, and Trout.

Table listing oyster products like Whitefish, Pickerel, and various oyster selections.

DRUGS

Following are prices for parcel lots, with usual reductions for unbroken packages.

Large table listing a wide variety of drugs and chemicals such as Alum, Alcohol, Bleaching Powder, and various oils.

LEATHER

Table listing different types of leather goods including harness, union oak, and hemlock.

FUEL

Table listing various types of coal and cordwood products.

TO THE TRADE

We Are 

receiving over one thousand packages of NEW GOODS weekly,

**Making**

Our stock the best assorted stock of General Dry Goods, Men's Furnishings, Carpets, Haberdashery and Woolens in

**The Dominion**

Filling Letter Orders a Specialty.

**John Macdonald & Co.**

Wellington and Front Sts. E.  
TORONTO, ONT.

**RICE LEWIS & SON**  
LIMITED

ARTHUR B. LEE, President  
A. BURDETT LEE, Vice-Pres. and Treas.

WHOLESALE

**HARDWARE**

BAR

**IRON AND STEEL**

Steam Pipe and Fittings  
Sporting Goods



Write for Prices

**TORONTO, - ONT.**

**Gillespie**   
**Ansley & Dixon**

WHOLESALE

NOW IN STOCK...



**WOMBAT COATS**  
**WALLABY COATS**  
**COON COATS for**  
**MEN and WOMEN**

Sole Agents for Christy's Celebrated Hats  
Stock quite complete.

FILLING LETTER ORDERS A  
GREAT SPECIALTY

**Wellington Street, - TORONTO**

J. H. Bastedo, Western Representative  
Manitoba Hotel, Winnipeg

**Wholesale**  
**Millinery**

PLEASE

FALL OPENING  
DISPLAY

At Winnipeg Showrooms

NOTE

SEPTEMBER 5

The trade cordially invited

**THE D. McCALL CO. Limited**

TORONTO  
MONTREAL WINNIPEG

**W. R. JOHNSTON & Co.**

(Late Livingston, Johnston & Co.)

WHOLESALE MANUFACTURERS  
READY MADE

**CLOTHING**

Corner Bay and Front Streets, Toronto

Western Representatives: A. W. Lasher, W.  
W. Armstrong.

**P. W. ELLIS & CO.,**

MANUFACTURERS OF

TORONTO, CANADA, 

STERLING SILVERWARE,  
STERLING HOLLOW WARE,  
FLATTABLE WARE & NOVELTIES.

**MEDAL AND TROPHY**  
MANUFACTURERS.  
DIAMOND MOUNTERS,

GOLD JEWELRY AND RING MAKERS,

Importers of Waltham, Omega and Elgin Watches, Waterbury Watches, Waterbury Clocks,  
Diamonds, Pearls, Opals, Olivines and other precious Stones.

WE MAKE or handle everything connected with the Watch, Clock, Jewelry  
and Silverware business.

TOOLS, SUPPLIES, MATERIALS, FINDINGS, ETC.,  
FOR WATCHMAKERS, JEWELERS AND ENGRAVERS  

A CATALOGUE We will send our General, Clock, Silver Plated  
FOR EACH DEPARTMENT. Ware, Tool and Material Catalogues to legiti-  
mate dealers upon application.

**P. W. ELLIS & CO.,**  
TORONTO, CANADA.

**H. S. Howland Sons & Co.**

TORONTO, ONT.

**Hardware Merchants**

Our Mr. J. S. BENNET is now in Manitoba with full line  
of HARDWARE suitable for Fall and Winter trade. The  
trade will do well to see our samples and prices before  
placing orders. Send for our latest Catalogue. Address

Or J. S. Bennett  
Winnipeg

H. S. Howland Sons & Co.  
Toronto.

WHOLESALE ONLY

**Manitoba**

J. W. Woolfe, general merchant, Gladstone, offers to sell out.

E. G. Hipwell, general merchant, Westbourne, offers to sell out.

D. Gibson, implements, Souris, Man., has sold out to Curry & Burland.

R. G. Wellwood is starting a harness shop at Plumus, on the Dauphin road.

John McCreath has moved his saddlery business from Ochre River to Makinak.

Alex. Barber and T. G. Bligh, butchers, Winnipeg, have dissolved partnership. Alex. Barber continues.

E. E. Turner and T. R. Vardon have formed a partnership as general merchants at McGregor, Man. The new firm will be known as Turner & Vardon.

An effort is being made to secure the erection of a small flour and saw mill among the Indians at Fisher River, away upon the west side of Lake Winnipeg. It is said the land in the vicinity is all right for farming.

A. L. Young has purchased A. P. VanSomeren's interest in the private banking business of Young & VanSomeren. In future the two businesses of Young & VanSomeren, bankers, and A. L. Young, real estate and insurance, will be amalgamated under the firm name of A. L. & P. V. Young & Co.

**Assinibola.**

B. N. Niblock, stationary, Medicine Hat, Assa., has sold out.

Mr. Bailey, of Millwood, contemplates opening a store at Churchbridge.

Sharman & Barber, bakers and confectioners, Yorkton, dissolved partnership, H. M. Barber, continuing. S. H. Sharman has bought the bakery business of H. Beckett, of the same place.

Wm. Philip, who is opening in business at Dauphin, Man., has sold out his interest in the firm of Dill & Philip, general merchants, of Moosomin. The latter business is being continued under the name of H. E. Dill & Co.

**Business at Vancouver.**

Vancouver, B. C., Sept. 5, 1898.

There are numerous changes in the market this week prices as a rule ranging lower. Jobbers claim that business has increased very materially in the past year and that trade in British Columbia is now on a better basis than ever before. In Vancouver the building boom is unabated and there are many who think that the city is in danger of being over-built. Rents are already climbing down slightly owing to the hundreds of houses erected recently. The population is, however, increasing rapidly, and may keep up with the increase in dwelling houses. In the centre of the city a dozen stone blocks are in process of construction.

In the produce markets jobbers have been successful in securing a slight advance for butter which has been kept low in price owing to stocks on hand while cheese has slightly advanced owing to this article having to be brought from Ontario, the price being too high in Manitoba owing to the meager outside supply.

The flour and feed market is feeling the effect of the new crop and prices are ruling much lower.

**British Columbia Items.**

S. J. Wisner is opening a hotel at Gladstone.

Beattie & Gibbons, hotel, Vancouver, have sold out.

H. E. Stafford has opened a restaurant at Nelson.

John Hastie & Co., Nelson, have sold out to J. A. Dewar.

Ickle & Moody, have opened a hotel at Greenwood City.

J. Inkster, customs broker, Trail, has sold out to J. E. Seattle.

Simmons & Co., have sold out their hotel at Greenwood City to Louis Bosshart.

The Kootenay Cigar Mfg. Co., Nelson, have sold out to Farley & Simpson.

Cliffe & Co., plumbers, New Westminster, have sold out to A. Godfrey.

The saw mill of Alfred Latch, at Vancouver, is in possession of the sheriff.

The saw mill of Lequime & Powers, near Midway, is reported to have been burned.

John Robinson has commenced a contracting and building business at Cascade City.

McPherson & Co., tailors of Ashcroft and Vancouver, have sold out their Ashcroft branch.

The Neilson Poorman mine has been bought by a Vancouver and Halifax syndicate for \$200,000.

The Arrowhead Saw and Planer Mills Co., Ltd., Arrowhead, has been sold out by the sheriff.

W. S. Fletcher, druggist, Greenwood City, is reported to have transferred his stock to M. E. Miller.

N. A. McPherson, tailor and gents' furnishings, Ashcroft, has been succeeded by Thos. McCash.

McDonald, McKinnon & Co., wholesale commission, etc., Vancouver, have assigned to D. F. Douglas.

McCandless Bros., men's furnishings, etc., Victoria and Rossland, have succeeded Elmore & McCandless.

A meeting of the creditors of the estate of Curllin & Lake, general storekeepers, Golden, was called for the 3rd inst.

The London and British Columbia Gold Fields company have taken over the management of the Kaslo and Slocan railway.

The Hudson's Bay Co. have purchased ground property at Cranbrook, on which it is said they will erect a building to be used as a hardware store.

Mr. Sherlock, of Lethbridge, Alberta, has purchased a piece of land at Cranbrook, upon which he will erect a stone building with the object of embarking in business there.

**Grain and Milling News.**

Grain men say there will be a lot of northern wheat this year.

The mill, when completed, will have a capacity of about seventy-five barrels per day.

The Selkirk flour mill, which recently became the property of the Selkirk Trading company, is being remodelled by Stewart & Harper, of Winnipeg.

Mr. Walker, who was last year with the Manitoba Grain Co., has taken a position with the Dominion Elevator Co. as chief accountant.

The partnership existing between J. K. McLennan and W. C. Graham, grain merchants, Winnipeg, has been dissolved. All assets of the firm are payable to J. K. McLennan, by whom all liabilities will be paid.

The first car of new Manitoba wheat loaded was reported from Gretna on August 30. The car was loaded by M. Long, banker of that place, probably for shipment on account of a farmer.

There were 123,000 bushels of wheat in store at Fort William and Port Arthur elevators on Monday, which shows an increase from the previous week. Grain men have been shipping out the balance of the old crop to clear out country elevators before new grain begins to rush in.

The grain standards board which acted last year will, continue in office this year. Samuel Spink, chairman; J. D. Mitchell, Kenneth Campbell, C. B. Watts, Finlay Young, M. P. P., S. E. Ellington, O. M. Gould, W. Postlethwaite, James Elder, James Riddell, C. Castle, J. McQueen, P. Ferguson, R. M. Phin, T. A. Crane, M. McLaughlin, C. Johnston, W. B. Underhill. Owing to the wet weather, the meeting of the board to fix standards for the new crop will be delayed.

Seven thousand bushels of new wheat were received by the M. & N. W. railway company at Westbourne last week. A number of cars of new wheat have also been received by the company at Macdonald, Gladstone and Midway. This wheat was delivered right from the threshers, and was being loaded directly on cars. H. S. Patterson, who was at Macdonald Friday of last week, said the grain was turning out well from the threshers. He brought in a sample from a field which threshed out 30 bushels per acre.

**The Lumber Trade.**

P. Gennelle & Co., are erecting a saw mill at Robson, B. C.

Vigars & Co., lumber manufacturers of Port Arthur, will establish an agency in Winnipeg for the sale of their lumber.

J. B. Mathers, of Glenboro, Man., is opening business in lumber and hardware at the new town of Dunrae, on the extension of the Northern Pacific and Manitoba railway.

About 300 men were brought in from the east by the Rat Portage Lumber Co., during the strike. To give employment to these men after the settlement of the strike, a number of them have been sent to the woods to get out logs for next season. This is much earlier than usual to start work in the woods.

The Dominion interior department has taken steps to secure a large timber reserve on what is known as Turtle mountain, in Manitoba. The reserve is to extend along the international boundary from the middle of range 18 west to the middle of range 23 west, and tapers up in a rough triangle to near the middle of township 2, including in all about 105,000 acres. Of this 41,000 acres belong to the C. P. R. and 5,000 acres to the Hudson Bay Company. The government is giving these companies land elsewhere in place of on the Turtle mountain, and selections are now being made in other parts of the province.

The Merchants Bank of Halifax is opening a branch at Ymir, B. C.

## HUTCHISON NISBET & AULD

Select Woolens and  
Tailors' Trimmings

TORONTO

BUYERS FROM THE WEST visiting the EASTERN MARKETS will find our stock the most thoroughly assorted in the trade. New departments added this season:

**FABRICS** suitable for . . .

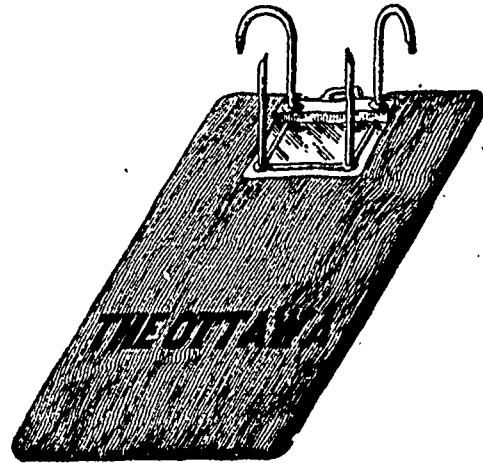
Ladies' Tailor-made Garments  
Cloaks, Capes and Jackets

MAIL ORDERS from the North-West (freight or express) are shipped first train leaving Toronto after receipt.

*SAMPLES TO THE TRADE ONLY*

**Hutchison, Nisbet & Auld**

## OUR LATEST



Send us your orders for the Ottawa—just as represented in cut—it can be sold retail at 50c. In Files we also have the "Eclipse" and "Shannon," and Binding Cases for same. Filing Cabinets—We have a specially low-priced line of these in six, nine and twelve drawers. Special sizes to order.

Headquarters for all lines of Stationery. For ladies' use, order our Perfection Square Envelopes. The use of this Envelope avoids the licking of gum.

**THE CONSOLIDATED STATIONERY CO.**

LIMITED

WINNIPEG, MANITOBA

## COUNTRY MERCHANTS

When in need of Hams, Lard, Bacon, Sausage or Bologna Casings, Sausage Spice, Saltpetre, Preservaline, Salt in Barrels, Skewers, Butchers' Paper, Knives; Block Brushes, Block Scrapers, Hog Scrapers and Saw Blades, write us for quotations. We pay highest market price for LIVE POULTRY.

Write our KEEWATIN BRANCH when you have first-class  
BUTTER and FRESH EGGS for sale

Butchers, Pork Packers  
. . . and Cattle Dealers

**P. GALLAGHER & SONS**  
WINNIPEG, MAN.

## The British Columbia Mills Timber & Trading Company

TELEPHONE 777  
P.O. BOX 604

MANUFACTURERS, AND WHOLESALE AND RETAIL DEALERS IN

**FIR, CEDAR and SPRUCE LUMBER**  
**SHINGLES, LATH, Etc.**

Winnipeg Office and Yard : Cor. Princess and Fonseca Streets

Mills at Vancouver and Westminster, B. C.

**GEO. W. CAMPBELL, Manager**

# FINANCIAL

## Winnipeg Clearing House.

The clearing house returns this week, compared with the corresponding week in previous years, show as follows:

Week ended Sept. 8, 1898 ..... \$1,345,882  
 Corresponding week, 1897 ..... 1,425,275  
 1895 ..... 964,432

Following shows the bank clearings at Winnipeg by months, for three years:

	1898	1897	1896
January .....	6,317,168	5,009,819	4,977,200
February .....	5,517,000	3,851,000	4,052,000
March .....	5,968,000	4,259,000	4,286,000
April .....	6,210,000	4,162,000	4,032,000
May .....	3,683,364	5,014,786	4,216,201
June .....	7,295,000	5,531,000	4,094,000
July .....	6,316,238	5,616,603	4,961,277
August .....	6,180,385	6,298,574	4,616,959

## Bank Clearings.

New York, Sept. 9.—Bank clearances for the Dominion of Canada were: Montreal, \$14,000,711, increase 17 per cent.; Toronto, \$182,680, increase 10.7 per cent.; Winnipeg \$1,345,882, decrease 5.6 per cent.; Halifax \$1,093,856, increase 1.1 per cent.; Hamilton \$518,910, decrease 13.5 per cent.; St. John \$50,945, decrease 14.7 per cent.

## Financial Notes.

Mr. Pambrun, late manager of the Banque d'Hochelega, Winnipeg, has mysteriously disappeared. He went to Europe a short time ago, and returned as far as New York, on his way home, but from that point no trace can be had of him. The case is considered a very mysterious one.

## Canadian Trade.

New York, Sept. 9.—Bradstreet's review says: Business is active in the Dominion of Canada, except in the maritime provinces. Toronto reports business active, buyers numerous, orders liberal, failures few, immigration large, and manufacturers busy. Montreal reports increased activity, especially in dry goods, with an active fall trade expected, and the outlook for freights improving. Trade is active at Victoria and Vancouver and shipments to Alaska are very heavy.

Business failures in the Dominion of Canada number 17, against 23 last week, and 33 in the week a year ago.

New York, Sept. 9.—Dun & Co's Canadian reports shows very little change in the course of business, compared with a week ago. At St. John business continues quiet and inactive, and same at Halifax and Quebec. Payments on the fourth at Montreal were well met and general business is healthy, with good prospects for the fall. Cheese exports show some decline, though prices are fairly held, and the money market is a little firm. The wholesale trade is very active and manufacturers are kept busy with fall prospects.

The feeling in Winnipeg is for a substantial fall trade, although unfavorable weather has interfered this

week with harvesting operations. Retail trade in groceries and hardware continues only fair at Victoria, but is quite satisfactory in clothing, and wholesale trade at Vancouver, in leading lines, is about the average, and retail trade is steady in dry goods and groceries, but rather quiet in other lines.

## Wheat Situation.

New York, Sept. 9.—R. G. Dun & Company's will say to-morrow: Wheat has been about one cent higher in price for September, with western receipts everywhere about as large as those of last year for the week. No doubt some farmers have learned that it is a poor business to hold back for higher prices, and very many are storing it, and so are making inevitable a more disastrous decline in prices after a time. The latest estimates range from 665,000,000 to 700,000,000 bushels, foreshadowing a somewhat smaller crop than was indicated a month ago, but large enough, nevertheless, to distribute 100,000,000 bushels for replenishing the world's depleted stocks; to meet all domestic consumption, and probably foreign demand, and still leave a sufficient surplus to depress the market.

## Wheat Shipments.

New York, Sept. 9.—Wheat shipments for the week, including flour, aggregate 3,100,208 bushels, as against 3,687,040 last week, and 5,461,506 in this week a year ago. Since July 1, wheat exports aggregate 32,493,800 bushels, against 33,311,752 during the same period of 1897.

## The Live Stock Trade.

A train of seventeen cars of cattle from around Whitewood and Moose Mountain was shipped east Thursday of last week by Mullins & Wilson.

A shipment of seventeen cars of cattle from M. & N. W. railway points the property of John Wake, passed through eastward Wednesday morning of last week for Liverpool.

John Wake, of Minnedosa, arrived in Winnipeg Wednesday with a train load of cattle for the British markets. He purchased the stock in the Yorkton district.

## British Cattle Markets.

London, Sept. 5.—There was an easier undertone to the market for American cattle, owing to increased supplies and prices for such were 1-1c lower, while values for Canadian stock were steady. Choice States sold at 11 1-2c; choice Canadians at 10 3-4c; Ranchers at 8 1-2c to 9 3-4c; and Argentine at 10c. Canadian sheep were unchanged at 11c, but Argentine were lower at 10 1-2c.

Liverpool, Sept. 5.—A private cable received reported the market steady. Choice Canadians sold at 10c to 10 1-2c, and sheep at 11c.

## Northwest Ontario.

John King, of the departmental store, Fort William, says the Journal, contemplates selling out his grocery, hardware, clothing and other departments, and retaining the liquor department. The departments will be offered for sale en bloc.

The Largest Factory of its kind in the Dominion



LION "L" BRAND  
 PURE VINEGARS

Manufactured under the supervision of the Inland Revenue Department.

Mixed Pickles, Jams, Jellies and Preserves.

—PREPARED BY—  
**Michel Lefebvre & Co.**  
 MONTREAL.

Gold, Silver and Bronze Medals.  
 Established 1849. 20 1st Prizes

PATRONIZE HOME INDUSTRY.

# GRETNA TOW MILLS

Furniture men why buy eastern Tow when you can purchase good Tow manufactured in Manitoba and made from the product of Manitoba. Save money and have a cheaper article. All letter orders promptly attended to. Address

J. G. KERTCHER,

Lock Box 4

Gretna, Man.

# McINTYRE SON & CO.

MONTREAL

## Specialties

DRESS GOODS, SILKS  
 LACES, VELVETS  
 VELVETRENS  
 KID GLOVES

(Trefousse and Rouillions)

LINENS, STAPLE AND  
 FANCY SMALLWARES, Etc.

STOCK NOW COMPLETE

Northwestern Agent, J. M. MACDONALD  
 Bank of Ottawa Building, Winnipeg, Man.



# BOVRIL

Is a condensed beef preparation in which ALL NUTRIMENT IS PRESERVED and from which ALL NON-NUTRITIOUS MATTER IS EXTRACTED.

It is not merely an extract or essence, but is both BEEF AND EXTRACT COMBINED.

It has no equal as a strength giving condensed human food and is

**Specially Adapted  
for Northern Latitudes**

The commissariat outfit of a PROSPECTOR, SURVEYOR or EXPLORER is incomplete without a supply of it.

KLONDYKE OUTFITS above all others require it.

## BOVRIL, LTD.

LONDON, ENGLAND

Canadian House, 27 St. Peter St., Montreal.

NORTHWESTERN AGENT:

W. L. MCKENZIE,

WINNIPEG, MAN.

### LEITCH BROS.

Oak Lake

"Anchor Brand" **Flours**

FROM NO. 1 HARD WHEAT.

Bran, Shorts and all kinds of Chopped Feed and Grain.

ADDRESS

**OAK LAKE, MANITOBA**

### The John L. Cassidy Co

LIMITED

339 and 341 St. Paul St., MONTREAL

Importers of **China, Glass and Earthenware, Etc., Etc.**

A. C. Beach, their old reliable traveller, will represent them in Manitoba, the Territories and B.C.

Communications addressed to him at 312 McDermot St., Winnipeg, will receive prompt attention.

SMOKE THE

Leading Cigars of the Day

BRANDS:

THE T. L. FORGET-ME-NOT  
ROSA LINDA BELLE ROSE  
THE GORDON KEY WEST  
LITTLE PETS

MANUFACTURED ONLY BY

**Western Cigar Factory**

THOS. LEE, Proprietor

Mail Orders Solicited

Telephone 1109

### SADLER & HAWORTH

Formerly Robin, Sadler & Haworth

MANUFACTURERS OF

## LEATHER BELTING

MONTREAL AND TORONTO

## JOSEPH RODGERS & SONS, LTD.

SHEFFIELD ENGLAND

◆◆◆◆  
Avoid purchasing imitations of our Cutlery, for they can be had in abundance.

Each blade of our Goods bears the exact mark here represented.

◆◆◆◆



*Cutlery*

*to Her*

*Majesty*

**JAMES HUTTON & CO., MONTREAL.**

SOLE AGENTS  
IN CANADA



**British Columbia Markets.**

[All quotations unless otherwise specified, are wholesale for such quantities as are usually taken by retail dealers, and are subject to the usual reduction on large quantities and to cash discounts.]  
BY WIRE TO THE COMMERCIAL.

Vancouver, Sept. 10, 1898.

utter is firmer. Manitoba creamery is selling at 21c, jobbers price. Eggs are advancing, Ontario eggs are selling at 17@17½ an advance of ½c on the week. Cheese is very firm. Lard ½c lower. Lemons \$1 lower.

Butter—Creamery, jobbers price, 21c; Dairy, jobbers prices, 16 @ 17c. Round lots, dairy, 15@16c.

Eggs—Local, 35c; Eastern eggs, jobbers prices, 17@17½c.

Cheese—Ontario, 10½ @ 11c, jobbers price; Round lots, 10c.

Cured Meats—Hams 12½@13c; breakfast bacon 12½@13c; backs 12½@15c; short clear 10½c; short rolls 10½c; smoked sides 11 @ 12½c; Lard is held at the following figures: Tins 10½c per lb, in pails and tubs 10c lb.

Fish—Flounders 3c; smelts 5c; sea bass 4c; whiting 5c; soles 6c; smoked salmon 10c; fresh halibut, 6c; salmon, 6c.

Vegetables—Potatoes, \$10@12 per ton; California silver skin onions, 1½c; cabbage 2c lb; carrots, turnips and beets, \$12.00 a ton; local onions, \$20 per ton.

Green Fruits—California lemons, 5@5.50 box; bananas, bunch \$1.75@2; plums 30@60c per box; peaches, 85c @ \$1.10; grapes, \$1.05; pears, \$1.50 @ \$1.75 box; apples, \$1.00; tomatoes 4c lb; local tomatoes, 40c box; valencia oranges, \$2.75; prunes, \$1.25; St. Michael oranges, \$3.75; watermelons, \$2.50@3.00 doz.; nutmeg melons, \$2.00.

Meal—Rolled oats, 30 lb sacks, \$2.80; 2 45 pounds sacks \$2.90; 4 22½ pound sacks \$3.10; 10 7 sacks, \$2.50; Oatmeal, 10 10's, \$3.25; 2 50's, \$3.00.

Flour—Delivered B. C. points—Manitoba patent per barrel \$5.25; strong bakers \$4.95; Oregon, jobbers price, \$5.00.

Grain—Oats, 25.00 @ \$26.00 per ton; wheat, 25.00@27.00 per ton;

Ground Feed—National mills chop, \$25.00 per ton; shorts \$20 ton; bran \$15; oil cake meal, \$35 ton; F.O.B. Vancouver including duty paid on imported stuff.

Hay—\$10 to \$12 per ton.

Dressed Meats—Beef, 6@7c; mutton 10c; pork 10c; veal 10c; Pemmican 40c lb.

Live Stock—Steers, \$3.50 per 100 lbs; sheep, \$4.00 per 100 lbs; hogs, \$7.00 per 100 lbs; cows, 3.00 per 100 lbs live weight.

Poultry—Chickens, \$4 @ \$6 dozen.

Evaporated Fruits—Apricots 10½c per lb; peaches 9c; plums, 9@10c; prunes, French 5@7½c; loose muscatel raisins, 6c; London layer raisins \$1.90 box; Italian prunes, 6@8½c lb.

Nuts—Almonds, 13c; filberts, 12½c; peanuts, 10c; Brazil, 12½c; walnut, 13c lb.

Sugars—Powdered, icing and bar, 6½c. Paris lump, 6½c; granulated, 5c; extra C. 4½c; fancy yellows 4½c; yellow 4½c lb.

Syrups—30 gallon barrels, 2½c pound; 10 gallon kegs, 2½c; 5 gallon tins \$1.75 each; 1 gal. tins, \$4.50 case of 10; ½ gallon tins, \$5.25 case of 20.

Teas—Congo, Fair, 11½c; good 18c; choice 20c. Ceylon: Fair, 25c; good 30c; choice, 35c lb.

**Toronto Hardware Market.**

Toronto, Sept. 10.

Pig Iron—Canadian, \$14.00.

Bar Iron—Base price, \$1.45 @ 1.55; laud iron, \$1.85 for Canadian and \$2.00 for imported; hoop iron \$2.

Sheet Steel—12-gauge, \$2.25 per 100 lbs; 16-gauge, \$2.40; 18@20, \$2.30@2.40; 22@24, \$2.30@2.40; 26, \$2.35@2.45; 28, \$2.45@2.55.

Galvanized Iron—16-gauge, 3½c; 18@24, \$3.87½c; 26, 4½c and 28 at \$4.37½.

Lead—Pig, 4@4½c; sheet, 4½@4½c per lb; shot, can., dis. 7½ per cent; pipe, dis. 25 per cent.

Black Iron—10@12 gauge, \$2.25@2.40 per 100 lbs; 14@16 gauge, \$2.60@2.70; 18@20 gauge, \$2.30@2.40; 22@24 gauge, \$2.25@2.35; 26-gauge, \$2.30@2.40; 28-gauge, \$2.45@2.55.

Coil chain—½ in., \$4.05; 5-16 in., \$3.75; ¾ in., \$3.25; 7-16 in., \$3.15; 1 in., \$3.10; 1½ in., \$2.80; ¾ in., \$2.75.

Zinc—6@6½c per lb.

Antimony—10½@11c; solder 11½c@12½.

Ingot Copper—12½c@13½ per lb.

Ingot Tin—18@18½c.

Canada plates—Half-polished. 52-sheet boxes, \$2.35; do, 60-sheet boxes, \$2.40; dull 75-sheet boxes, \$2.50; all-bright "Garth," \$2.60 per box; do, "alaska," \$3.00.

Tinplates—Cokes, \$3.00@3.10 for 14x20; do, squares, \$3.15@3.25; \$6.25 for 20x23; charcoal plates, \$3.50@3.60 basis for good brands.

Iron Pipe—Black pipe, per 100 ft., ¼ to ¾ inch, \$2.00 to 2.05; ¾ inch, \$2.15@2.20; 1 inch, \$2.62½; 1 inch, \$3.60; 1½ inch, \$4.75; 1½ inch, \$6.20; 2 inch, \$8.30. Galvanized, ¾ inch, \$3.50@3.80; 1 inch, \$4.20 @ 4.60; 1 inch, \$5.85@6.20; 1½ inch, \$8.05@8.25; 1½ inch, \$11.00@11.25.

Barb Wire—\$1.75, terms 30 days or 2 percent., ten days f.o.b. Toronto.

Fence Wire—Annealed, oiled and annealed, 35 per cent; galvanized, 30 per cent.; terms 4 months or 3 per cent. 30 days.

Nails, Wire—Base price, \$1.80.

Cut Nails—\$1.75 base price Toronto, Hamilton, London and Montreal.

Horse Nails—Discount on regular brands, 50 per cent.

Horseshoes—Iron, light and medium pattern, \$3.25 per keg, Toronto and Hamilton.

Screws—Flat head bright, 87½c and 10; round head bright, 80 and 10; flat head brass, 82½ and 10; round head brass, 75 and 10 per cent.

Bolts—Common carriage bolts, ¼@5-16, 70 per cent; tire bolts, 70 and 5; machine bolts, 60 and 10; blank bolts, 60 per cent; sleigh shoe bolts, 80 per cent; plough bolts, 60; stove bolts, 70 and 5; nuts, square, 4½c; hexagon, 5½c.

Rivets—Iron, 60 per cent; copper rivets, 45 per cent.

Glass—First break in 50-foot boxes, \$1.60, and in 100-foot boxes, \$3.00; double diamond, under 25 united inches, \$4.50. Toronto, 4 months, or 3 per cent 30 days.

Green Wirecloth—\$1.20 per 100 square feet; terms, 4 months or 3 per cent for 30 days.

Spades and Shovels—Discounts 40 and 10@45 and 2½ per cent.

Harvest Tools—Discounts 60, 10 and 5 per cent.

Rope—Sisal, 7-16 in. and larger, 10½c; ¾ in., 11c; 1 and 5-16 in., 11½c; Manila, 7-16 and larger, 13c; ¾, 13½c; 1 and 5-16, 14.

**Toronto Grocery Market.**

Toronto, Sept. 10.

Sugar—Standard granulated sugar, 4 9-16c; yellows, 3½@4½c.

Syrup and Molasses—Syrup medium, 30c@32c; special bright, 35c@42c. Molasses—West Indian, bris, 32c@45c; New Orleans, 23@30c; for medium and 35c@47c for bright.

Teas—Japans, low grade, 16c@18c per lb; Young Hysons, seconds 16c@19c; firsts, 25 @ 45c; Congous, low grades, 10c@15c; mediums, 22c @ 25c, and fines, 40c @ 55c; Oolongs, 25c @ 65c; Ceylons, 17@25c.

Coffees—Green, Rio, 7½@11½c; Mocha, 23c@28c; Java, 22c@30c.

Canned goods—Tomatoes, \$1.00@1.10; peas, 75c@1.00; sifted peas, \$1.05@1.20; corn, 85@95c; beans, 70@80c; pumpkins, 70@75c; strawberries, 2's, \$1.50 @ 1.80; raspberries, 2's, \$1.50@1.75; peaches, 2's, \$1.55@1.75; 3's, \$2@2.40. Colhoes Salmon, \$1.15; sock-eyes, \$1.40; mackerel, \$1.30@1.40; lobsters, halves, \$1.75; tall lbs, \$2.80; flats, \$3.25.

Nuts—Marbots, 10c; filberts, Sicily, 9c; Greuoble Walnuts, 12@13c.

Rice—Rice, bags, 3½@4c; do Patna, 5½ @6c; do Japan, 6@6½c.

Dried Fruits—Raisins, Valencias, new, off-stalk, 4½c@5c; fine, off-stalk, 5½@5½c; selected, 6@6½c; layers, 6½@7c; Provincial, currants, 6@6½c; Filiatras, 6½@6½c; Patras, 7c; Vostizzas, 7½@8½c; California evaporated fruits—Apricots, 10½@14c; pears 9c@10c; peaches 9½c@10½c; prunes, 70's to 80's 7½@8c; 80's to 90's 7@7½c; 90's to 100's, 6½@7½c. Bosnia prunes, 5½@6½c; Sultanias, 9c@13c. Peel—Orange, 12c @15c per lb; citron, 18c@20c; lemon 11c @14c. Hallowee dates, 5@5½c. Malaga, London layers, \$1.30@1.50 per box; black baskets, \$2.00; blue baskets, \$2.25; royal clusters, \$4.00; quarter flats, London layers, 65c; black baskets, 75c; blue baskets, 85c; Dehesia, clusters, \$1.25. Figs—Natural in bags 4@5c; Eleme figs, 10 oz., 7½c, 5, 10 and 12 lb boxes, 10@12c; 6-crown; 12½c; 7-crown, 15c; bags, 4@4½ 4-lb Glove boxes, 14@15c.

Spices—Ginger, Jamaica, 25c; Cochin 20c; cloves, Zanzibar, 15 @ 18c; Ambboy, 18 @ 25c; allspice, 20c; nutmegs, 50c@1; cream tartar, pure, 25@28c, and 15@23c for compound.

**PROVISIONS.**

Mess Pork—\$16.00@16.50 for Canada mess; short cut, \$17; clear mess, \$15.00.

Dry Salted Meats—Long clear bacon, car lots 8½c, ton and case lots, 8½@9c.

Smoked Meats—Breakfast bacon, 11c; hams, large 10½c and 11c to 11½c for medium; rolls, 9c; green meats out of pickle are quoted 1c less than smoked.

Lard—Tierces, 7½@7½c; tubs, 7½c; pails 7½c.

**Dr. Warnock's Veterinary**

**"ULCERKURE."**

The greatest healing medicine known. Heals Wounds and Sores of all descriptions. Large bottle \$1.00. Send stamp to **Western Veterinary Co., P.O. Box 478, Winnipeg,** for a free trial bottle and treatise on "The Healing of Wounds and Sores in Domestic Animals."



# Peaches, Concord Grapes

Our last California Peaches will be shipped this week from California. Place your orders now and not be disappointed. Our first car of Concord Grapes from Ontario arrives Sept. 9th. Don't confuse these with Champion.

WHOLESALE  
Write Us for Prices

## THE MACPHERSON FRUIT CO.

WINNIPEG, MAN.



## TRY IT IN YOUR COFFEE

Better than fresh Milk and equal to Cream  
A boon to the Miner and Camper

## THE MARTIN, BOLE & WYNNE COMPANY

WHOLESALE DRUGGISTS

The largest stock of DRUGS, PATENT MEDICINES and SUNDRIES  
in Western Canada.

Cor. Princess and Market Streets

WINNIPEG, MANITOBA

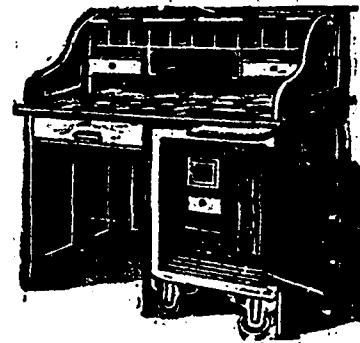
## JAS. MCCREADY & CO.

WHOLESALE

\* Boot and Shoe  
Manufacturers

MONTREAL, QUEBEC

W. WILLIAMS, Agent.

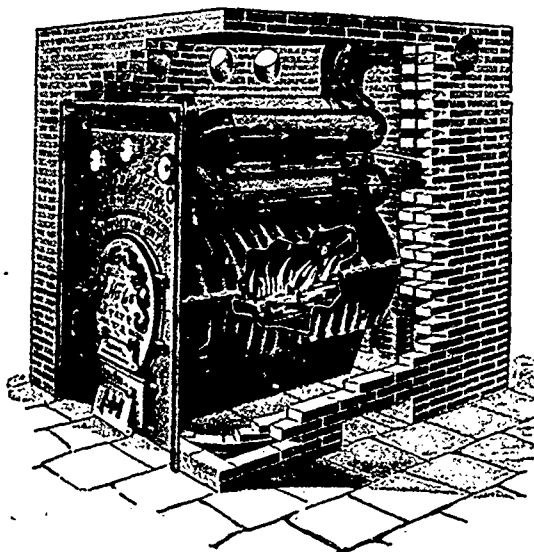


## VICTOR COMBINATION DESK AND SAFE

The most needful, useful, convenient and ornamental piece of furniture that can be placed in an office. One thousand sold the first month. Safes, all sizes and prices from \$15 up. Call and see them, or write for catalogue.

KARL K. ALBERT

148 Princess Street, Winnipeg



## SURPRISING RESULTS

Are obtained by users of

# GURNEY'S NEW IDEA FURNACE

Gurney's New Idea Furnaces are so recognized and endorsed everywhere, because they are the best. Our dealers have never had to take out one of these Furnaces and substitute another make. They always work and always give satisfaction.

If your nearest dealer has not a sample Furnace in stock, and cannot show from our catalogue, write us direct, and we will send you full information how to heat your home.

THE GURNEY STOVE & RANGE CO., Limited

OFFICE AND WAREHOUSE: RUPERT STREET

WINNIPEG, MAN.

## THE BUSINESS SITUATION

Winnipeg, Saturday, Sept. 10.

Business with the jobbers has been very fair for the season. Fall shipments are mostly made and sorting trade is beginning in some lines. Hardware, paints and building material are in fair demand. In the city a large number of buildings are being pushed forward to have them completed or closed in before winter. The recent wet weather has caused some apprehension as regards the crops, but the most serious has been the delay to harvest work. Owing to the low temperature and cool wind which accompanied and followed the rains, the damage to the crop has not been serious. The delay adds to the expense of harvesting, however, by keeping a large number of extra farm hands from work, while their pay goes on, and should the winter set in early, it might find some grain in bad shape for threshing or to stand the winter in stack. Manitoba has had two wet harvests since the export grain trade began. The first was in 1884 and the second in 1891. In the latter year the rains were very heavy and prolonged through September, and the crops were subject to vastly more rain while in stook than has so far been experienced this year, but the temperature was low, and the actual damage done by the rain was not very great. There was an immense loss, however, on account of much grain having been stacked before it was dry, and also on account of bad stacking, which admitted the water. With fine weather now for a few weeks, it would be found that the crop has suffered very little from its drenching with cold water.

## WINNIPEG MARKETS

Winnipeg, Saturday, Sept. 10.

### GROCERIES.

In the local market, canned salmon has been marked up 25 cents from the inside price, and this commodity is very firm. The total pack of salmon for the Pacific coast is estimated at only 1,850,000 cases, compared with 2,800,000 cases last year. This does not include the fall pack in either year. Last year the fall pack was 300,000 cases, and it is estimated that it will be 200,000 cases this year. The advance in salmon is therefore legitimate, and due to an enormous shortage in the pack. Yellow sugars have been advanced 1-16 cent, and the market is firm. Pitted plums have been advanced 1-2c. All California fruits are being held very firm.

### GREEN FRUITS.

Peaches have been arriving somewhat more freely this week, and orders sent in at once will no doubt be filled. Dealers, however, should not long expect to be able to secure freestone peaches and those who delay will probably have to take clingstones.

Ontario grapes are arriving in car lots. Ontario fruit has not come forward in very good condition. Grapes have been off stook and pears soft, while some Ontario plums that arrived were simply carted out to the refuse grounds, and not offered at all. British Columbia plums have mostly come to hand in poor condition, though some lots have arrived all right. Prune plums branded St. Elmo Fruit Rancho arrived from British Columbia in very good condition, and the question is, if shipments from some fruit farms are all right, why should not other shipments of the same varieties arrive here all right. If the same care is exercised in picking and packing the fruit. Blueberries are about out of the market. A few Cantelope melons were offered. The report published in Winnipeg papers that the freight rates on fruit from Ontario to Manitoba points had been advanced is not correct. The rate remains the same. Prices are lower on several varieties this week. Bananas are in better supply and very fair quality, and offering lower. Prices are: Oranges, late Valencias, \$3.50 to \$4.50 a box; bananas, a bunch, \$2 to \$2.50 as to size; California lemons, \$6 per box; Ontario tomatoes, 20 pound basket, 60 to 75c; California and Oregon fruits, peaches, \$1.25 per box; plums, \$1 per box as to quality and variety; British Columbia plums, 75c to 90c per box; pears, \$2.00 to \$2.25; Ontario apples, \$3.00 per barrel; crab apples, barrel, \$4; California grapes, \$2.75 for four basket crates; Ontario grapes, 10 pound baskets, concord, 30 to 35c; mozels, 35 to 40c; the lower price for larger lots; Ontario pears, 60 to 75c per basket; water melons, \$3 per dozen; coconuts, \$1 per dozen; Sicily filberts, large, 11 to 12c per pound; Grenoble walnuts, 14c; figs, eleme, 14 pound boxes, \$1.50; 20 pound boxes, \$2.50; pound boxes per dozen, \$1.75, dates, 8c per pound; Tarragona almonds, 12 1-2 to 13c; peanuts, green, 9c; roasted, 12c; pecans, 14 to 15c; strained honey, 7 1-2 to 10c per pound; maple sugar, 11 to 12c; syrup per dozen half gallon tins, \$6.50; apple cider, 35c per gallon in barrels and half barrels.

### HARDWARE AND PAINTS.

Glass is moving freely, both for common and plate, but prices continue very low here, compared with values east, where prices were advanced sharply some time ago. A report from Montreal this week says: "Glass is very firmly held in sympathy with the continued strong advices from abroad, and importers fully expect a higher range of prices in the near future." Prices are very steady all round in the local markets, and without any actual changes this week. Business is moving very freely for the season.

### GRAIN AND PRODUCE.

Monday was a holiday in the wheat markets. On Tuesday, Wednesday and Thursday the markets were steady, with an upward turn on Thursday. On Friday quite a strong feeling was developed and a good advance was made in United States markets, due to unfavorable weather reports from the Northwest and in sympathy with the improvement in corn, on reports of damage to the corn crops by frost.

In the local market there has been very little doing, owing to the wet weather. Threshing was just getting nicely started toward the close of last week, and the rush of new wheat to

market would have commenced in earnest this week if the weather had been favorable. The rains, however, have practically prevented anything from being done this week, and as there was fear of a continuance of the rains, dealers were afraid to offer anything for future near by delivery. Good prices were offered for spot wheat, or for immediate shipment, such being quoted at 70 to 72c, Fort William, but there is scarcely any obtainable. One shipment of 6,000 bushels of new wheat, the first of the season east of Fort William, was forwarded from Fort William on Thursday for the Ontario milling trade. For October delivery No. 1 hard was quoted at 64 1-2 to 65c, Fort William. Old wheat is a scarce commodity. A few cars were handled at a range of 79 to 81c, Fort William. At Duluth No. 1 hard was selling yesterday at the big premium of 3 3-4c over No. 1 northern, which indicates that there must be a lot of northern wheat and a corresponding shortage of hard grain, which forces buyers to bid up to secure stuff to fill contracts. At country points yesterday No. 1 hard was quoted at 51 and No. 2 hard and No. 1 northern at 48c. These prices are to farmers.

**FLOUR**—There cannot be very much money in flour at present prices, when it is considered that it is old wheat flour that is offering, which was bought at high prices. There has been no change since the decline announced last week. Prices are \$2.15 for patent, \$1.95 for strong bakers, \$1.50 for second bakers, and \$1.15 for XXXX per sack of 98 lbs.

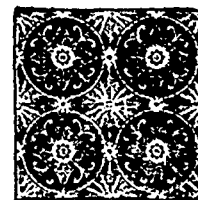
**MILLEED**—There is no change in prices, but there are practically no stocks in the market. We quote bran at \$11 and shorts at \$13 per ton in bulk. Large lots nominal at 50c per ton less.

**GROUND FEED**—Ground feed is quoted at \$27 to \$28 per ton as to quality for oats. Ground corn is in the market again at \$17 to \$18 per ton.

**OATS**—The wet weather has been very favorable to holders of old oats, who have been enabled to maintain

## NOW-A-DAYS

You're old fashioned if  
you don't use our



**Metallic  
Ceilings  
and Walls**

They're so much better than any other interior finish—more beautiful and durable, as well as fire-proof and hygienic.

We make countless designs, suited to any room of any building. Why not enjoy their economical superiority?

If you mail us an outline showing shape and measurements of the walls and ceilings to be covered, we will send you an estimate.

**Metallic Roofing Company, Ltd.**

1195 King Street W., Toronto

THOS. BLACK, WINNIPEG AGENT

*THE BEST IN THE DOMINION*



# CIGARS CIGARS

The trade in the Northwest and British Columbia can now secure the excellent brands manufactured by the

## JOS. TASSE CIGAR COMPANY

The factory is in full swing at 29 ST. PETER STREET, MONTREAL, and is turning out a variety of HIGH GRADE DOMESTIC CIGARS.

A TRIAL IS REQUESTED OF THE \_\_\_\_\_

## FRISCO AND CHANCELLOR

NEW BRANDS, which excel all others at their price.

Old Western Patrons of the Weed can once more enjoy the fragrance of the celebrated **FLOR DE BAHAMA**, which needs no recommendation, as for a dozen years it has eclipsed all competitors west of Lake Superior.

RESERVE YOUR ORDERS and look over carefully what stock you require as MR. JOSEPH TASSE is now in your country with a full line of samples, and will shortly call upon you. Do not buy until you see his samples.

# THE JOS. TASSE CIGAR CO.

LIMITED

29 ST. PETER STREET, MONTREAL

ESTABLISHED IN  
1858**HODGSON BROTHERS**CABLE ADDRESS  
"HODGSON," LIVERPOOL

27 TO 29 STANLEY ST., LIVERPOOL, ENGLAND

**COMMISSION MERCHANTS FOR CANADIAN PRODUCE**SPECIAL FACILITIES for the disposal of GENERAL PROVISIONS, CHEESE AND BUTTER  
DIRECT TO THE ENGLISH CONSUMER, thus securing the highest market price. Liberal advances  
paid on all Consignments shipped to us direct or through ourCORRESPONDENCE  
SOLICITEDNew York Branch—Abrm. Hodgson & Sons, 6 Harrington St., New York, U.S.A  
Canadian Agents—Hodgson Bros., 65 to 69 William Street, Montreal.

the high prices in the absence of any new grain coming in. We quote cars of old oats at 37 to 38c on track here. Buying is only hand to mouth, as no one will buy more than they need from day to day, at the high prices ruling, in the expectation of much lower prices for the new crop.

**BARLEY**—Nominal. None offered.

**BUTTER**—Creamery—The market is firm. We quote 181-2c to creameries at the factories, for fresh goods. Some of the factories are holding out for 19c. These prices show good values, compared with eastern markets, which shows that factorymen have no reason to complain. It is said Ontario goods are being laid down at British Columbia points under the cost of Manitoba creamery delivered there.

**BUTTER**—Dairy—The market is fairly firm, though receipts have been coming forward pretty freely recently. Round lots of goods average quality bring 181-2c here.

**CHEESE**—No Ontario cheese has arrived in the market as yet, but it is understood that fairly liberal purchases have been made in the east, and as offers to sell eastern cheese have been made here for early delivery, it may be inferred that Ontario cheese is likely to arrive here any day. In fact it is said a car lot is due now. Local prices, however, still keep up at a high figure, compared with values east, 9 to 91-2c being quoted here for Manitoba cheese. Western markets are being supplied with Ontario cheese, which, at a cost of 8c east, can be laid down at Vancouver at 10c, the freight rate being \$2 per 100 lbs. in car lots. The freight rate from Manitoba to Vancouver is \$1.25 per 100 lbs, which at a cost here of 91-4c, would make the cost of Manitoba cheese laid down at Vancouver be 101-2c, or 1-2c above the cost of Ontario cheese laid down there. The actual net cost of laying down cheese at Vancouver, from either here or the east, is about 1-4c per lb. higher than the figures show, owing to freight charged for weight of boxes and extra cost of refrigerating.

**VEGETABLES**—Potatoes 25c to 30c per bushel. Cabbage, 25c to 40c per dozen; cauliflower, 40 to 75c per dozen. Green stuff offers at 10 to 12 1-2c per dozen bunches; celery, 20 to 25c per dozen; green peas, in pod, 2c; beans, 2c per lb.; cucumbers, 10c per dozen; corn, sweet, 8 to 10c per dozen ears; native corn, 5 to 6c; onions, \$1 per bushel; green tomatoes, 60c per bushel. Local ripe tomatoes, 4c lb. The pickling factories are paying 11-2c per pound for cauliflower and 11-4c for small cucumbers.

**FRUITS**—Blueberries are offering on the market at 60 to 75c per pail. Cranberries 25c per pail.

**HIDES**—Prices hold at decline quoted last week. We quote hides, No. 1 71-2c; No. 2, 61-2c; kip 61-2 to 71-2c; calf, 7c to 9c; deacon skins, 15

**OYSTERS**

The months with the "R" in them have again come around, and so has the oyster season. Oysters in bulk now arriving.

MAIL ORDERS PROMPTLY EXECUTED

Dealer in Fish, Game  
and Poultry**W. J. GUEST**

602 MAIN STREET, WINNIPEG

**THE AMES HOLDEN CO. LTD.**  
OF MONTREAL**Boots and Shoes**  
**Granby Rubbers**Winnipeg Stock complete for  
Fall Assorting Trade.

Letter Orders Filled Promptly

A. L. JOHNSON  
Manager Winnipeg Branch**THE AMES HOLDEN CO. Ltd.**to 25c each; sheepskins and lambskins  
20 to 30c; horse hides 75c to \$1.75  
each; colts, 25c each.

**WOOL**—We quote 9 to 91-2c for unwashed Manitoba fleece.

**TALLOW**—No. 1, 31-2c; No. 2, 21-2 to 3c.

**SENECA ROOT**—The market is firmer at 17 to 19c per lb. Very little offering. A report from Minneapolis says there is not enough root coming in to supply the demand.

**HAY**—New hay is offering at \$5 per ton for baled on track here. A lot of poor hay has been put up, owing to the bad weather, and a lot more has been spoiled entirely. This in a short hay crop year may cause a continuance of the the high prices which prevailed on the last crop for good hay.

**EGGS**—Candled stock is selling here at 14 to 14 1-2c, and dealers are paying 13 1-2c here for receipts, equal to 12 1-2 to 13c in the country. Market firm.

**DRESSED MEATS**—Pork is very scarce. We quote beef at 5c to 5 1-2c, as to quality. Mutton easy at 7 to 8c; lambs, 9 to 10c; hogs, 6 1-2 to 7c for country dressed and 7 to 7 1-2c for city dressed; veal, 7 to 8 1-2c.

**DRESSED POULTRY**—There is a good demand for dressed poultry and a net any too plentiful supply. Receipts are expected to increase from now on. Quotations are as follows:

DRINK

## LIPTON'S CEYLON TEAS



The finest the world can produce—Pure,  
Fragrant, Delicious.

Awarded highest honors at the World's  
Fair. Over one million packages sold weekly.  
A trial will convince you of their merits.

**MACKENZIE & MILLS**  
DISTRIBUTORS  
244 Princess St., Winnipeg

Chickens 50 to 60c per pair live; spring chickens 25 to 30c per pair as to quality and size; turkeys 10 to 11c per pound live weight; ducks, 65 to 70c per pair; geese, no demand.

**GAME**—Wild ducks are now in season. Mallards bring 25 to 30c per pair, canvass back, 35 to 40c and small varieties 15 to 20c per pair.

#### LIVE STOCK.

**CATTLE**—Export cattle have been coming in freely this week and one firm alone has handled some 1,500 head. Prices are a little easier at the following ranges: Exports, 23-4c to 31-1c; butchers, 21-2c to 3c. Stocker cattle are easier and are quoted at 21-2 to 23-4c.

**SHEEP**—The market is easy at 3 to 31-2c off cars here as to quality. Lambs are quoted at 4 to 41-2c here.

**HOGS**—None offering. The market is nominal at 5c for choice bacon hogs. We quote choice bacon hogs, weighing 150 to 250 lbs. at 5c per lb.; 250 to 300 lbs., \$4.25 to \$4.75; heavy hogs over 300 lbs., \$3 to \$4, as to quality, live weight.

**COWS**—A large number of cows have been condemned in the city dairies for tuberculosis, and these it is said are being sold at very low prices to farmers and others, and some are going west to the range country. If this is true, and the cows are really infected with an infectious disease, it seems wrong that they should be distributed around the country in this way. It is said over 40 per cent of the cows in the dairies are being condemned by the test now being carried out, whereas in former tests a very much smaller number were condemned.

**HORSES**—The demand for horses continues good and arrivals from the western ranges have been liberal during the week. Some American horses have also been offering. Prices for best breeds range from \$150 to \$200 a team.

#### Western Business Items.

F. O'Neil, harness, Napiuka, Man., has sold out.

The Grand Central hotel, Virden, is offered for sale.

L. P. Westergard, livery, Foxwarren, Man., has sold out.

The estate of Sibbald & Co., Winnipeg, has been sold to T. Finklestein.

W. G. Blyth & Co., dry goods, etc., Melita, Man., have dissolved partnership.

A. Kingston & Co., brewers, Rat Portage, have assigned to A. Carmichael.

The Royal hotel, Winnipeg, was damaged by fire to the extent of \$500 Friday morning.

Tenders for the erection of a Presbyterian church in the village of Dauphin, Man., will be received up to Sept. 12 by S. Geekie, Dauphin.

J. J. McDonald, of Rat Portage, has rented J. Broadbent's new store, at Thornhill, Man., and will open business as general merchant about September 15.

A drove of 700 cattle from Prince Albert, is being driven across the plains to Yorkton, from which place they will be shipped in three trains on Monday and Tuesday by Gordon & Ironside for the British markets. Friday morning a train load of beef cattle for this firm arrived in Winnipeg from Yorkton.

A meeting of the directors of the Elkhorn Milling Co., Elkhorn, was held recently, when various offers for leasing the mill for the current year were considered. It was decided to accept the offer of A. B. Clifford and Wm. Hopps, and these gentlemen have taken possession and will operate the mill until further notice.

J. K. McLennan shipped 6,000 bushels of new Manitoba wheat from Fort William on Thursday, for the Ontario milling trade. This is the first shipment made this season east of Fort William, of new wheat.

#### Saskatchewan.

S. N. Hart, tailor, who recently opened business at Prince Albert, has closed his shop and moved back to Portage la Prairie, Man.

Donald McLeod has opened a general store at McKenzie's Crossing, Prince Albert district.

#### British Columbia Items.

Mrs. H. M. Strang, groceries, Victoria, is opening business.

V. C. Rackliffe, groceries and clothing, Slocan City, has sold out.

Crow's Nest Development Co., Ltd., Swansea, are applying for license.

Edward McQuade, of P. McQuade & Son, ship chandlers, Victoria, is dead.

Martin Markeson, baker and confectioner, Slocan City, has been burned out.

H. A. King & Co., fancy goods, stationery and confectionery, have opened at Greenwood City.

W. J. Mackintosh, dry goods, etc., Victoria, has had his stock taken over by principal creditors.

Partridge & Ryan, Australian hotel, Victoria, have been closed out by landlord, and are succeeded by A. R. McDonald.

#### Weather and Crops.

Last week wound up very unfavorable for harvest work. There were heavy general rains all over the wheat belt, entirely stopping the work of threshing, which was just nicely starting at many points. The early part of this week also continued wet. Threshing from the stook was again resumed to some extent yesterday and Thursday. A report from Carman said threshing had been started on Thursday, and threshing was being done yesterday in the Winnipeg district. It is feared, however, that the grain is hardly in fit condition to thresh, and if not thoroughly dry, it is certainly a mistake to begin either threshing or stacking. The custom of threshing from the shock appears to be growing, though it is claimed the quality of the grain is improved by being stacked for a while before threshing. The rains of Friday night last week were very heavy in the west and prolonged. In the eastern part of Manitoba they were lighter and came later, on Saturday, in the form of light intermittent showers, continuing at intervals on Sunday. Sunday, Monday and Tuesday were showery pretty much all over the country, but with a low temperature and brisk cold wind, which would prevent the grain from suffering much from the soaking. Wednesday and Thursday the weather was much improved, though showers were reported in limited districts. There were killing frost on Wednesday and Thursday nights in many districts, but as

grain was practically all cut, the frost is not now a matter of any concern. So far as the rain is concerned, we do not believe that the crop has suffered material injury, owing to the low temperature and heavy winds which quickly dried up the moisture. The result, however, has been to delay harvest work about a week.

To-day the weather is bright and fine and the barometer favorable.

#### Visible Supply.

New York, Sept. 7.—Special cables and telegraphic dispatches to Bradstreet's indicate the following changes in available supplies last Saturday, as compared with the previous Saturday.

Wheat—United States and Canada, east of the Rockies, increase 1,891,000 bushels; afloat for and in Europe, decrease 200,000. Total supplies, net increase 1,649,000.

Corn—United States and Canada, east of the Rockies, increase 39,000 bus.

Oats—United States and Canada, east of the Rockies, increase 1,795,000 bus.

Montreal, Sept. 9.—Can. Pac. in London. 91 1-8; Co, Cable, 184.

#### RAINY RIVER

### GOLD MINING COMPANY

LIMITED

Incorporated under the Laws of Ontario.

CAPITAL, \$1,000,000

SHARES, \$1.00 PAR VALUE  
Full Paid, Non-Assessable

HEAD OFFICE: RAT PORTAGE  
DIRECTORS

CHAS. E. NEADS, Manager of the Rat Portage Hardware Co., President.

J. G. MURDOCK, Reeve of Lucknow, Ont.; Vice-President.

LLEWELLYN A. MORRISON, Mechanical Engineer and Patentee of the Morrison Gold Saver, Managing Director.

JAMES WEIDMAN, Journalist, of Rat Portage, Secretary-Treasurer.

M. NICHOLSON, Merchant Tailor, Rat Portage.

J. E. HARRISON, Mining Engineer, Rat Portage.

This company does a general Development, Mining and Brokerage business.

It owns four properties on Andrew Bay, near the famous Stella Mine.

It owns two fine properties within four miles west of Keewatin.

It owns the Winton Mine, now being operated on ore, of which average assays give \$24 of gold to the ton. The Winton adjoins the Canadian Pacific Railway six miles east of Rat Portage, and immediately south of the great Scramble Mine.

By careful and conservative management this company has attained its splendid position with \$516,000 shares of its capital stock still in the treasury.

500,000 Shares of the Rainy River Gold Mining Stock now offered at Ten Cents per Share

Address—Drawer Q, Rat Portage

Agents Wanted everywhere for the sale of stock and mining properties.

Wm. FERGUSON

WHOLESALE

Wines, Liquors and Cigars

8th ST., BRANDON

**New York Wheat.**

New York, Sept. 6.—Wheat—Sept. opened 66 5-8, closed 66 1-4, Dec. opened 65 3-4, closed 65 1-2. May opened 67 1-8, closed same.

New York, Sept. 7.—Wheat Sept. opened 66 3-8 to 1-2c, closed 66 1-2c; Dec. opened 65 1-2c, closed 65 1-8c; May opened 67 1-8c, closed 66 3-4c.

New York, Sept. 8.—Wheat Sept. opened 66 5-8c, closed 67 1-8c; Dec. opened 65 1-8c, closed 65 3-8c a; May opened 66 3-4c, closed 67 1-8c.

New York, Sept. 9.—Wheat Sept. opened 67 1-4c b, closed 69c b; Dec. opened 65 3-4 to 7-8c, closed 66 5-8c b; May opened 67 1-4c b, closed 68 1-4c.

New York, Sept. 10. — September wheat closed at 68c; December closed at 66 1-8c, and May at 67 5-8c.

**Chicago Board of Trade Prices**

Prices are quoted per bushel of 60 pounds for wheat, bushel of 56 pounds of corn, bushel of 32 pounds of oats, per barrel for mess pork, and per 100 pounds for lard and short rib bacon; flax seed per bushel of 56 pounds.

Chicago, Sept. 6th.—Wheat—Sept. opened 62 1-4, closed 62. Dec. opened 60 7-8. May opened 62 7-8, closed 62 7-8 b. Corn—Sept. opened 30 3-4, closed same. Dec. opened 30 3-4, closed 30 3-4-7-8. May opened 30, closed 30 1-4. Oats—Sept. closed 19 3-4-7-8. Dec. opened 19 5-8, closed 19 1-2-5-8. May opened 22 1-8, closed 21 7-8-22. Ribs—Oct. opened \$5.20, closed \$3.02. Pork—Dec. opened \$8.55, closed \$8.37. Lard—Oct. closed \$4.72.

Chicago, Sept. 7.—The leading futures closed as follows.

Wheat—Sept. 61 7-8c; Dec. 60 1-1 to 60 3-8c; May 62 1-2c.

Corn—Sept. 30c; Dec. 30 1-8c; May 32 1-4c.

Oats—Sept. 19 1-4 to 19 3-4c; Dec. 19 3-8c; May 21 5-8c.

Chicago, Sept. 8.—Wheat Sept. closed 62 1-2 to 5-8c; Dec. closed 60 3-4c; May closed 63c. Corn, Sept. 30c; Dec. closed 30c. Oats, Sept. closed 19 3-4c; Dec. 19 5-8c. Ribs, Oct. closed \$5.30. Pork, Dec. closed \$8.60. Lard, Oct. closed \$5; Dec. closed \$4.90.

Chicago, Sept. 9.—The leading futures closed as follows:

Wheat—Sept., 63 7-8c; Dec., 62c; May, 64 1-4c.

Corn—Sept., 30 3-4; Dec., 30 3-4c; May, 33 1-8c.

Oats—S. pt., 20 1-8c; Dec., 20c; May, 22 1-8c.

Chicago, Sept. 10.—December wheat opened at 61 7-8c and ranged downward to 61c. Closing prices were:

Wheat—Sept. 62 7-8c, Dec. 61c, May 63 1-4c.

Corn—Sept. 30 3-8c, Dec. 30 3-8c.

Oats—Dec. 19 3-4c.

Pork—Oct. \$8.40.

Lard—Oct. \$4.85.

Ribs—Oct. \$5.25.

A week ago September option closed at 62 1-2c. A year ago September wheat closed at 96 5-8c. Two years ago at 58 1-4c, three years ago at 56 1-8c, four years ago at 53 1-8c.

**NEW YORK MONEY.**

New York, Sept. 9.—Money on call, firm; 2 1-2 to 4 per cent; last loan, 3 per cent; prime mercantile paper, 4 to 4 1-2 per cent; sterling exchange firmer at \$1.84 1-4 to \$1.84 1-2 for demand, and \$1.82 1-2 to \$1.82 3-4 for 60 days; posted rates, \$1.83 1-2 to \$1.84 and \$1.83 1-2 to \$1.86; commercial bills, \$1.81 to \$1.81 1-2; Mexican dollars, 46 3-4; silver certificates, 60 1-2 to 61; bar silver, 60 1-2; government bonds irregular.

**WINNIPEG CLOSING WHEAT.**

Prices to farmers in Manitoba country markets were advanced 1c this morning to 52c for No. 1 hard and 49c for No. 2 hard and No. 1 northern. There is nothing doing to-day in this market. Old No. 1 hard nominal at St. Fort William. New, October delivery 64 1-2 to 65c. New spot Fort William nominal 70c.

**MINNEAPOLIS WHEAT.**

Saturday, Sept. 10, No. 1 northern wheat closed at 58 5-8c for September, and 57 7-8c for December.

**Liverpool Markets.**

Friday wheat closed 3-4d higher than Thursday's close. The request was fair. Opening Sept. 5s 5 1-8. Dec. 5s 2d. Closing Sept. 5s 5 7-8d, Dec. 5s 2 7-8d. It looks as if the visible might increase 1,700,000 Monday.

**LIVERPOOL WHEAT.**

Liver. Sept. 10.—Wheat quoted 3-4 d higher than yesterday.

**DULUTH WHEAT MARKET.**

No. 1 northern wheat at Duluth closed as follows each day of the week:

Monday—Holiday.

Tuesday—Sept. 60 1-2c, Dec. 58 3-4c.

Wednesday—Sept. 60 5-8c, Dec. 58 3-8c.

Thursday—Sept. 61 1-2c, Dec. 58 3-4c.

Friday—Sept. 63 1-2c, Dec. 60 1-8c.

Saturday—Sept., 61 7-8c; Dec., 59 3-8c.

Cash No. 1 hard closed on Saturday at 67c and cash No. 1 northern at 63 1-2c.

Last week September wheat closed at 60 1-4c.

A year ago September wheat closed at 97 1-4c. Two years ago September option closed at 59 5-8c, and three years ago at 56 1-4c, four years ago at 55 3-4c, and five years ago at 67 1-4c.

**NEW YORK STOCKS.**

New York, Sept. 9.—The stock market opened irregular. Atchison 13 1-2; Burlington 116 3-8; General Electric 44 3-8; Louisville 57 1-2; Leather preferred 70 1-4; Manhattan 96 1-8; Missouri Pacific 35 1-8; Northwest 133 1-2; Northern Pacific 38 3-4; do preferred 77 3-8; People's Gas 103 1-4; Rock Island 103 1-2; Sugar 138 1-4; St. Paul 111 1-2; Union Pacific preferred 65 7-8; Western Union 92 5-8.

**CHICAGO FLAX MARKET.**

Chicago, Sept. 10.—Flax seed closed at 91c for cash and 87 1-2c for October option.

**CHEESE MARKETS.**

Jagersoll, Sept. 6.—Offerings to-day 3,325 boxes. No sales; 7 3-4 bid.

Campbellford, Sept. 6.—1,550 boxes were boarded, all white, August make, 440 boxes sold at 7 7-8c, 90 at 7 7-8c, 50 at 7 3-4c.

**SUGAR.**

Special to The Commercial.

London, Sept. 9.—Cane quiet and unchanged. Beet firm and tending upward. September beet quoted 9s 8 1-4d, October 9s 9d.

**BRITISH LIVE STOCK MARKET.**

Special to The Commercial.  
Liverpool, Sept. 9.—Cattle: steady and unchanged.

**Progress on the Manitoba and Northwestern Railway.**

The Manitoba & Northwestern railway shows good evidence of the progress along its line by its west bound shipments. Taking the eight months to the 1st of August, the cars of lumber, for instance received, represents an increase of 162 cars compared with the same period of 1897, or over 50 per cent; shingles an increase of 18 cars—25 cars having been shipped this year as compared with 7 last; lime, an increase of 5 cars. These last three items being a good indication of the large amount of new building which is going on.

Implements show an increase of 45 cars or over 50 per cent; vehicles, an increase of 22 cars or over 100 per cent; hardware, 16 cars, and furniture 8 cars; settlers effects 19 cars, or over 70 per cent; live stock 7 cars, whilst feed, groceries and miscellaneous all also show very satisfactory increase.

**THE TRAVELLING MEN.**

W. M. Cross, a well known western commercial traveller, has accepted a situation with Gault Bros. & Co., and will assist F. G. Crawford in looking after the interests of this firm in Manitoba and the Territories, the business proving too much for Mr. Crawford to handle alone.

A telegram from Vancouver states that prices on Fraser river salmon have advanced 10c per dozen or 10c per case within the past ten days.

Sir W. P. Howland, of Toronto, president of the Confederation Life, has returned from a western trip.

His financial views—"I say, Bridget, is you bean a gold or a silver man?" asked the head of the house.

"Sure, he's neyther," answered the cook, who was in love with a policeman; "he's what you call a copper man, sur."

"I am here, gentlemen," explained the pickpocket to his fellow-prisoners, "as the result of a moment of abstraction." "And I?" said the incendiary, "because of an unfortunate habit of making light of things." "And I," chimed the forger, "on account of a simple desire to make a name for myself." "And I," added the burglar, "through nothing but taking advantage of an opening which offered in a large mercantile establishment."

"What do you find the most difficult task?" asked the idle friend.

"The hardest thing about my job," the all-round clerk replied, "is going on with my work when I have drawn my pay in advance."

A certain benedict was in the habit of troubling his father-in-law with complaints about his wife's behavior. "Really, this is too bad," cried the irascible old gentleman one day, on hearing of some of his daughter's delinquencies. "If I hear any more complaints, I will disinherite her." There was no more of it.

**Subscribe for 'The Commercial'**  
\$2.00 a Year in Advance



## TORONTO WHOLESALE TRADE.

Special to The Commercial.

Toronto, Sept. 10.

Groceries—Much more active. Many buyers are ordering liberally. New Valencia raisins are due to arrive here next week and are offering at 6c. Canned salmon is strong at \$1.40 for sock-eyes, and \$1.15 for cohoes. High grade comb honey is 25c dearer. Figs, new, 5c dearer than last year. Currants are easier, and may be lower. Teas in more active demand. Ceylons offering here at 16c are good value. Dry goods—Very active, and large sales. The fall opening trade is the best ever experienced here. Values are strong. Bleached and pillow cottons and higher grades of cotton bags are very scarce. Mills cannot fill orders for a month. Higher grades of blue denims are 1-2c lower to meet foreign competition.

Hardware—Many good orders were placed this week. The outlook for fall trade is promising. Values firm and unchanged. Metals were enquired for. Galvanized iron has been advanced by manufacturers, but there is no change in jobbers' price. An advance in turpentine is likely next week. Lead is firmer. Another advance has taken place in manufacturers' prices on glass. Black pipe is five to ten cents dearer. Manufacturers have advanced galvanized pipe 10c per 100 lbs, but local brokers have not yet advanced.

## TORONTO LIVE STOCK.

Toronto, Sept. 6.

Special to The Commercial.

At the semi-weekly market to-day receipts were 56 cars, including 1,325 sheep and lambs and 940 hogs.

Export cattle—The market was about 10c lower. Choice cattle sold from \$4 to \$1.40 per cwt., and selections brought \$4.50. Bulls 3 1-2 to 4c for export kinds.

Butchers' cattle—Market quiet. Choice cattle brought \$4.10 to \$4.20. Good, \$3.75 to \$4, and inferior, 3 to 3 1-2c.

Stockers and feeders—Slow at \$3 to \$3.40, and \$3.55 for very choice.

Sheep and lambs—Export and butchers' \$3.25 to \$3.45; bucks, \$3 to \$3.75 per cwt. Lambs \$3.25 to \$4.25.

Hogs—Market weak. There were no changes in the prices since last market day. Choice bacon hogs, 4 3-4c; light fat, 4 to 4 1-4c; heavy fat, 4 1-4c, sows, 3 1-4 to 3 1-2c.

## FRIDAY'S MARKETS.

Toronto, Sept. 9.

Receipts of cattle were 50 carloads and 1,700 hogs. Choice export cattle advanced 20c per 100 lbs. Stockers were about 10c lower at \$3 to \$3.30 per 100 lbs. Hogs unchanged. Export cattle, \$1.20 to \$1.60 per 100 lbs. for choicest; butchers, 4 to 4 1-2c per lb. Best bacon hogs 4 3-4c lb. Sheep same as Tuesday.

## TORONTO GRAIN AND PRODUCE.

Special to The Commercial.

Toronto, Sept. 10.

Very small country deliveries of grain. Farmers refuse to sell at current prices. Ontario red winter wheat is 2c lower at 65c for local milling, but exporters are only offering 60c. Manitoba old No. 1 hard very scarce. Practically none obtainable, though 1c higher has been bid. Eggs 1-2c higher. Long clear bacon is scarce and higher prices are expected. Ontario straight roller flour 10 to 25c higher. Shorts 50c lower. Oats un-

changed, compared with a week ago.

Flour—Manitoba patents, \$4.40 to \$4.60; Manitoba bakers, \$4.30. Ontario straight roller, \$3.15 to \$3.35 per barrel in wool, in car lots.

Wheat—Ontario red and white winter wheat, new, 65c for cars at country points; No. 1 hard, 90c; old, nominal. Toronto.

Oats—New white, 22 1-2c for cars at country points.

Barley—No. 1, 35 to 40c at country points on cars.

Millfeed—Shorts, \$12 to \$14 per ton; at country points. Bran, \$8.50 to \$9 per ton.

Oatmeal—\$4 per barrel for car lots and \$3.90 in bags.

Eggs—12 1-2 to 13c as to quality. Butter—Dairy, tubs, 14 to 15c; for choice free goods; medium grades, 11 to 13c; creamery, tubs, 18 to 18 1-2c.

Hides—No. 1 green 83-4c; cured, 9 1-4c sheepskins and lambskins 50c to 60c; calfskins 8 to 10c; tallow 3 1-2 to 4c.

Wool—Washed fleece, 16c; unwashed, 10 to 10 1-2c.

Beans—50 to 95c per bushel as to quality.

Dressed hogs—\$5.50 to \$6 per 100 pounds.

Dried apples—3 1-2 to 4c.

## MONTREAL HARDWARE MARKET.

Special to The Commercial.

Montreal, Sept. 10.

Cement is firmer and stocks light. Turpentine is 2c higher at 46c. Linseed oil has been easier lately. Quotations are as follows:

White lead, government standard, \$5.62 1-2; No. 1, \$5.25; dry white lead in kegs 5c; red lead in kegs, 4 1-2c; linseed oil, raw, 47 to 48c; boiled, 50 to 51c. turpentine, 46c; bar iron, \$1.40 to \$1.50, tin plates, cokes, \$2.75 to \$2.90; I. C. charcoal, \$3.25 to \$3.75; Canada plates, \$2.10 to \$2.15; tern plates, \$5.95 to \$6.25; galvanized iron, 4 1-4 to 4 3-4c; lead, \$3.75 to \$4; iron pipe, \$3.90 to \$4; putty in bulk, \$1.65; in bladders, \$1.80; ingot tin, 16 1-2 to 17 1-2. Cement, English brands, \$2.25 to \$2.35. Germany, \$2.35 to \$2.50, and Belgium, \$1.85 to \$2.05 per barrel ex-wharf. Rope, sisal 10 1-4 to 10 1-2c; Manila, 12 to 12 1-2 for 7-16 size and larger.

## MONTREAL GRAIN AND PRODUCE.

Special to The Commercial.

Montreal, Sept. 10.

The flour market is quiet. Manitoba grades are 10c lower on the week. Millfeed and oatmeal unchanged. Grain market dull. Eggs firm. Butter is firmer, creamery 1-4c higher on the week; dairy firm. Cheese steady and unchanged.

Oats—No. 2 white, new, 27 1-2 to 28c afloat.

Flour—Manitoba strong bakers \$4.50 to \$4.60; Manitoba patents, \$4.80 to \$4.90.

Millfeed—Bran \$11.50 per ton; shorts, \$14.50, including casks.

Oatmeal—Rolled oats, \$1.75 per bag. Hides—No. 1 green city hides, 9c; No. 2, 8c; No. 3, 7c; calfskins, 8c to 10c; sheepskins, 40 to 50c; lambskins, 50 to 70c; tallow, 3 1-2 to 3 3-4c.

Eggs—13 to 14c per dozen.

Butter—Choice dairy, 14 to 15c; western dairy, 13 to 14c.

Butter—Creamery, in tubs, 17 3-8 to 17 7-8c. Fancy boxes range up to 18c.

Cheese—Choice western 8 1-4 to 8 1-2c. cattle n, 7 1-2 to 7 7-8c.

Beans—85c to \$1 per bushel as to quality.

## MONTREAL LIVE STOCK PRICES.

Montreal, Sept. 6.

Special to The Commercial.

Receipts at the East End abattoir market yesterday were 600 cattle and 600 sheep and lambs. Choice cattle sold at 4 1-2 to 4 3-4c; good at 4 to 4 1-4c; fair at 3 1-4 to 3 3-4c; common at 2 1-2 to 3c. The market for sheep for export was firmer at 3 1-4 to 3 1-2c. Lambs ready sale at 4 to 4 1-2c per lb. Offerings of live hogs were large and prices lower at 4 3-4 to 5c per lb.

Cattle freights to Liverpool have again declined and are now quoted at 26s 6d to 30s. London, 25s.

## THURSDAY'S MARKETS.

Special to The Commercial.

Montreal, Sept. 9.

Receipts of cattle at the semi-weekly market yesterday were 700 head, sheep and lambs, 900.

There was a good demand for choice cattle, which were scarce. Choice brought 4 1-4 to 4 1-2c, and fair to good, 3 3-4 to 4c. Sheep, 3 1-4c, lambs, 4 to 4 1-2c. Hogs sold at \$5 to \$5.10 per 100 lbs.

## MONTREAL GROCERY MARKET.

Special to The Commercial.

Montreal, Sept. 10.

Molasses is held very firm on spot, owing to light stocks. Canned salmon is excited and prices are advancing. Canned vegetables nominal.

Quotations are: Granulated sugar, standard, 4 1-2c at refineries; yellows, 3 11-16 to 4 3-16c; molasses, 30 to 31c; syrups, 2 to 2 1-2c as to quality, Valencia raisins 4 3-4 to 5 1-2; Valencia layers, 6 1-2c; currants, 5 1-8 to 6 1-2c, as to brand; coffee, Rio, 8c to 10c; Mocha, 22 to 24c; Java, 22 to 24c; rice, Crystal Japan, 5 1-4c, B., 3 3-4c.

## MINNEAPOLIS MARKETS.

Flour—Prices in barrels. First patents \$4 to \$4.20; second patents \$3.80 to \$4.

Millfeed—Shorts in bulk, \$7 to \$7.25; bran in bulk \$7 to \$7.25; corn feed \$12 to \$13 per ton as to quality.

Corn—Quoted at 28 to 28 1-4c for No. 3.

Oats—Oats held at 21 1-4c for No. 3 white.

Barley—Feed quoted at 27 to 28c. Flax seed—\$1 to \$1 1-4c per bushel.

Eggs—10 1-4c for strictly fresh, including cases; seconds 6 to 7c.

Cheese—Choice fancy 7 to 9 1-2c; fair to good, 6c.

Butter—Creamery, 17 to 18 1-2c; seconds, 13 to 14c; dairy 13 to 16 1-2c, for choice to fancy.

Dressed meats—Mutton, 5 1-2 to 7c; lamb 8 to 10c; veal 7 to 8c.

Potatoes—New car lots mixed, 25 to 30c.

Poultry—Hens, 8 1-2 to 9c; roosters, 6c; spring chickens, 10c; turkeys, 7 1-2 to 8c; ducks, 7 1-2 to 8c; geese, 5c; all live weight.

Hides—Green salted hides, 9 1-4c for No. 1; 8 1-4c No. 2; bulls, oxen and brands 7 to 8c; sheepskins 25 to 30c each; veal calf, 9 1-2 to 11c; tallow 2 3-4 to 3; seneea root, 20 to 21c.

Wool—Unwashed, fine 11 to 12c; medium 13 to 14c; coarse 15 to 16c.

Hay—\$6.50 to \$7 per ton for timothy; mixed, \$4.50 to \$5.50.

## CHEESE.

Special to The Commercial.

Liverpool, Sept. 9.—Cheese, colored at 38s 6d. White, 37s 6d. These prices are the same as a week ago.