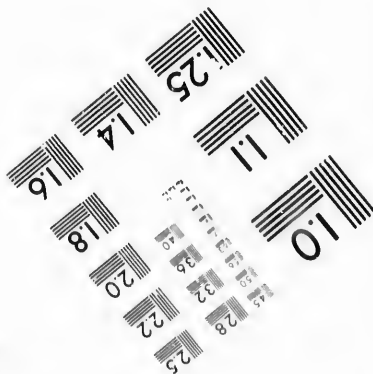
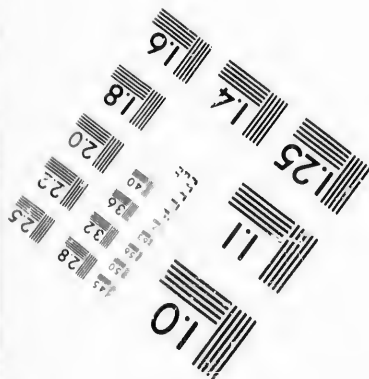
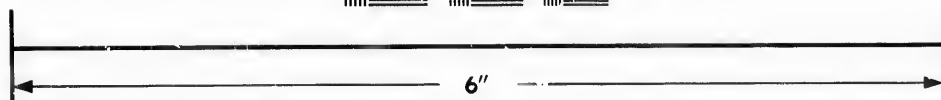
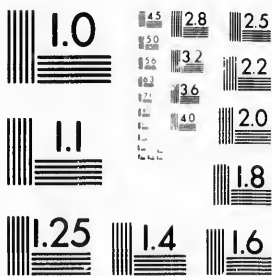


**IMAGE EVALUATION  
TEST TARGET (MT-3)**



**Photographic  
Sciences  
Corporation**

23 WEST MAIN STREET  
WEBSTER, N.Y. 14580  
(716) 872-4503

**CIHM/ICMH  
Microfiche  
Series.**

**CIHM/ICMH  
Collection de  
microfiches.**



Canadian Institute for Historical Microreproductions / Institut canadien de microreproductions historiques

**© 1987**

Technical and Bibliographic Notes/Notes techniques et bibliographiques

The Institute has attempted to obtain the best original copy available for filming. Features of this copy which may be bibliographically unique, which may alter any of the images in the reproduction, or which may significantly change the usual method of filming, are checked below.

L'Institut a microfilmé le meilleur exemplaire qu'il lui a été possible de se procurer. Les détails de cet exemplaire qui sont peut-être uniques du point de vue bibliographique, qui peuvent modifier une image reproduite, ou qui peuvent exiger une modification dans la méthode normale de filmage sont indiqués ci-dessous.

- |  |   |
|--|---|
| <input type="checkbox"/> Coloured covers/<br>Couverture de couleur   | <input type="checkbox"/> Coloured pages/<br>Pages de couleur  |
| <input type="checkbox"/> Covers damaged/<br>Couverture endommagée  | <input checked="" type="checkbox"/> Pages damaged/<br>Pages endommagées   |
| <input type="checkbox"/> Covers restored and/or laminated/<br>Couverture restaurée et/ou pelliculée  | <input type="checkbox"/> Pages restored and/or laminated/<br>Pages restaurées et/ou pelliculées   |
| <input type="checkbox"/> Cover title missing/<br>Le titre de couverture manque   | <input checked="" type="checkbox"/> Pages discoloured, stained or foxed/<br>Pages décolorées, tachetées ou piquées  |
| <input type="checkbox"/> Coloured maps/<br>Cartes géographiques en couleur   | <input type="checkbox"/> Pages detached/<br>Pages détachées   |
| <input type="checkbox"/> Coloured ink (i.e. other than blue or black)/<br>Encre de couleur (i.e. autre que bleue ou noire)   | <input checked="" type="checkbox"/> Showthrough/<br>Transparence  |
| <input type="checkbox"/> Coloured plates and/or illustrations/<br>Planches et/ou illustrations en couleur  | <input type="checkbox"/> Quality of print varies/<br>Qualité inégale de l'impression  |
| <input type="checkbox"/> Bound with other material/<br>Relié avec d'autres documents   | <input type="checkbox"/> Includes supplementary material/<br>Comprend du matériel supplémentaire  |
| <input type="checkbox"/> Tight binding may cause shadows or distortion<br>along interior margin/<br>La reliure serrée peut causer de l'ombre ou de la<br>distorsion le long de la marge intérieure   | <input type="checkbox"/> Only edition available/<br>Seule édition disponible  |
| <input type="checkbox"/> Blank leaves added during restoration may<br>appear within the text. Whenever possible, these<br>have been omitted from filming/<br>Il se peut que certaines pages blanches ajoutées<br>lors d'une restauration apparaissent dans le texte,<br>mais, lorsque cela était possible, ces pages n'ont<br>pas été filmées. | <input type="checkbox"/> Pages wholly or partially obscured by errata<br>slips, tissues, etc., have been refiled to<br>ensure the best possible image/<br>Les pages totalement ou partiellement<br>obscurcies par un feuillet d'errata, une pelure,<br>etc., ont été filmées à nouveau de façon à<br>obtenir la meilleure image possible. |
| <input checked="" type="checkbox"/> Additional comments:/<br>Commentaires supplémentaires:   | [Printed ephemera] 1 sheet (verso blank)  |

This item is filmed at the reduction ratio checked below/  
Ce document est filmé au taux de réduction indiqué ci-dessous.

10X	14X	18X	22X	26X	30X
<input type="checkbox"/>	<input type="checkbox"/>	<input type="checkbox"/>	<input type="checkbox"/>	<input type="checkbox"/>	<input type="checkbox"/>
12X	16X	20X	24X	28X	32X
<input type="checkbox"/>	<input type="checkbox"/>	<input type="checkbox"/>	<input type="checkbox"/>	<input type="checkbox"/>	<input checked="" type="checkbox"/>

The copy filmed here has been reproduced thanks to the generosity of:

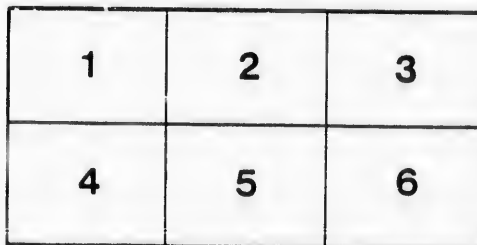
New Brunswick Museum  
Saint John

The images appearing here are the best quality possible considering the condition and legibility of the original copy and in keeping with the filming contract specifications.

Original copies in printed paper covers are filmed beginning with the front cover and ending on the last page with a printed or illustrated impression, or the back cover when appropriate. All other original copies are filmed beginning on the first page with a printed or illustrated impression, and ending on the last page with a printed or illustrated impression.

The last recorded frame on each microfiche shall contain the symbol  $\rightarrow$  (meaning "CONTINUED"), or the symbol  $\nabla$  (meaning "END"), whichever applies.

Maps, plates, charts, etc., may be filmed at different reduction ratios. Those too large to be entirely included in one exposure are filmed beginning in the upper left hand corner, left to right and top to bottom, as many frames as required. The following diagrams illustrate the method:



L'exemplaire filmé fut reproduit grâce à la générosité de:

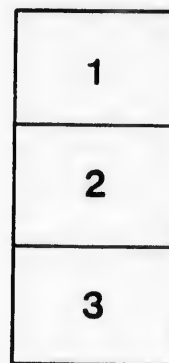
New Brunswick Museum  
Saint John

Les images suivantes ont été reproduites avec le plus grand soin, compte tenu de la condition et de la netteté de l'exemplaire filmé, et en conformité avec les conditions du contrat de filmage.

Les exemplaires originaux dont la couverture en papier est imprimée sont filmés en commençant par le premier plat et en terminant soit par la dernière page qui comporte une empreinte d'impression ou d'illustration, soit par le second plat, selon le cas. Tous les autres exemplaires originaux sont filmés en commençant par la première page qui comporte une empreinte d'impression ou d'illustration et en terminant par la dernière page qui comporte une telle empreinte.

Un des symboles suivants apparaîtra sur la dernière image de chaque microfiche, selon le cas: le symbole  $\rightarrow$  signifie "A SUIVRE", le symbole  $\nabla$  signifie "FIN".

Les cartes, planches, tableaux, etc., peuvent être filmés à des taux de réduction différents. Lorsque le document est trop grand pour être reproduit en un seul cliché, il est filmé à partir de l'angle supérieur gauche, de gauche à droite, et de haut en bas, en prenant le nombre d'images nécessaire. Les diagrammes suivants illustrent la méthode.



# MECHANICS' INSTITUTE, . . . . . ST. JOHN

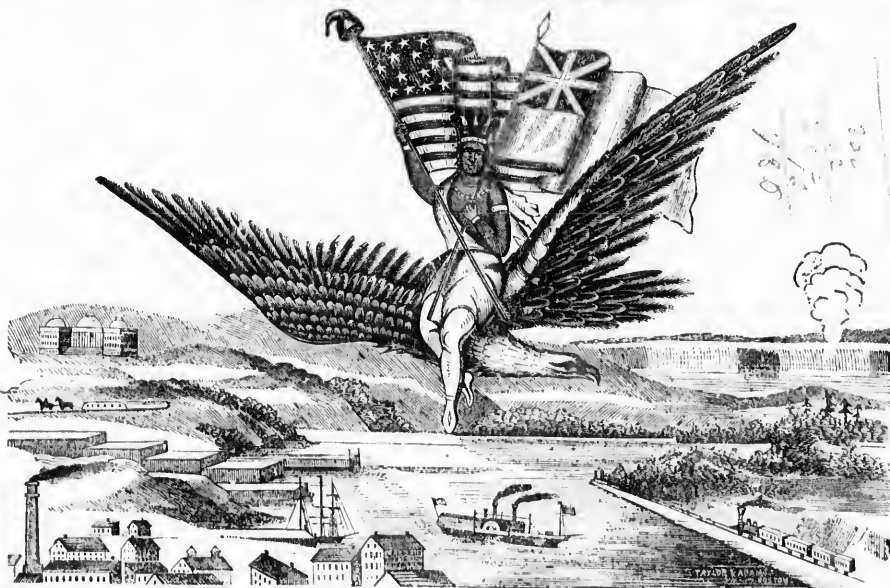
Positively 6 Nights Only. Monday, Tuesday, Wednesday, Thursday, Friday and Saturday, April 22, 23, 24, 25, 26 & 27; also, Wednesday and Saturday Afternoons, at 3 o'clock, when Children will be admitted for 7 1-2c.

Notice to the citizens of this place.—This Painting was designed and executed for exhibition in Europe, and will open at Polytechnic Institute, London, June 3d, 1861; therefore it will remain open only the time specified, on account of Mr Hubbard's other engagements, this being positively only opportunity of witnessing it, prior to its departure for Europe.

J. GORDON HUBBARD . . . . . Proprietor | W. F. TRUE . . . . . Cicerone

TICKETS 25 CENTS. Doors open at 7 1-4; to commence at 8.

## THE VAST ARTISTIC COMBINATION, ENTITLED HUBBARD'S COLOSSAL UNITED STATES PANTOSCOPE OF THE TOUR OF H. R. H. PRINCE OF WALES, THROUGH



# AMERICA!

The Proprietor, in prosecuting this Extraordinary Work to its completion, engaged nine of the most eminent artists in America, who, under the supervision of the PEARSON BROTHERS, 658 Broadway, N. Y., U. S. A., accomplished this gigantic undertaking, in the incredible, short space of five months, and he proudly asserts that it not only possesses more beauty of finish, and artistic delicacy of intrinsic merit as a painting, but contains a greater variety, covers more broad acres of canvas, is painted with a stereoscopic effect never before achieved, and is more faithful and correct as a duplicate of Nature's self, than any panoramic exhibition ever opened in the world. These Paintings form an elaborate and authentic representation of the entire route traveled by H. R. H. and Suite, of 6000 miles, and embraces the Principal Receptions, Testimonials, Balls, Levees, Reviews, Leave-Takings, Departure, Embarkation, &c. Also, the Cities, Villages, Rivers and

## WONDERS OF THE WESTERN WORLD!

### SYNOPSIS OF THE ROUTE.

## THIS GRAND ILLUSTRATION

Commences with the departure from Bristol, and embraces  
Newfoundland, Nova Scotia, New Brunswick,  
Upper and Lower Canada, Border Scenery of  
the United States and Canadian Shores,  
Niagara Falls and the following States:

MICHIGAN, ILLINOIS, MISSOURI, OHIO, KENTUCKY, VIRGINIA, WASHINGTON, PENNSYLVANIA, MARYLAND, NEW YORK, MASSACHUSETTS AND MAINE.

## THIS GRAND ILLUSTRATION

# THIS GRAND ILLUSTRATION

Commences with the departure from Bristol, and embraces  
**Newfoundland, Nova Scotia, New Brunswick,  
Upper and Lower Canada, Border Scenery of  
the United States and Canadian Shores,  
Niagara Falls and the following States:**

**MICHIGAN, ILLINOIS, MISSOURI, OHIO, KENTUCKY, VIR-  
GINIA, WASHINGTON, PENNSYLVANIA, MARYLAND,  
NEW YORK, MASSACHUSETTS AND MAINE,  
Also, EMBARKATION FROM PORTLAND.**

## British America.

The opening scene on this pictorial journey, presents a view of the DEPARTURE from Bristol, England; passing Liddystone Light, forming a splendid nautical scene; approaching the city and harbor of

### ST. JOHNS, NEWFOUNDLAND!

Leave-taking of St. Johns; soon the great thoroughfare, **HALEFAK, Nova Scotia**, is minutely displayed upon the canvas, and the reception at **HEARST** passes before the eye, when the historic shores of the Bay of Fundy are approached, whose wondrous tides rise to the height of 60 feet, passing Cape Split on the left, we arrive at

### ST. JOHN, NEW BRUNSWICK

The Great Lumber Depot of the lower provinces, **RECEPTION AT ST. JOHN, View on River St. John and Fredericton**, capital of New Brunswick are seen; when we approach the classic

### ST. LAWRENCE.

And drop anchor at the **MAJESTIC PORTALS of the SAGUENAY RIVER** Now half the fresh water of the globe having yielded to the dominion of the St. Lawrence, at this point; its vast abyss rolls on, soon to lose its own identity by disappearing in the ocean; embarking again upon the voyage, and entering a Mammoth Chasin between immense mountains of granite, the Saguénay River begins to reveal its Picturesque and Startling Attractions. This River, exclusively controlled by the Hudson's Bay Co. has been till recently veiled in obscurity, but now is attracting the attention of the World; the **Moosae Bay, L'Anse A L'Eau**, a trading post belonging to the Hudson's Bay Co. First deserves notice, upon

### Eternity Point, Trinity Cove & Cape Trinity!

At sunset, display their isolated and awful grandeur. Here peak on peak and alps on alps rise perpendicularly to the height of 2,000 feet above the ink wave, and the water actually fathomless at their base; now passing the **Three Profitles**, by moonlight, we arrive in **THE FINE BAY**, by night; near head of navigation on the Saguenay, and are presented with a marvellous representation of the **Acadia Bonanza** in these high latitudes. Thus having visited this intensely interesting range of scenery, invested with the changes of the day, we return to the St. Lawrence, and arrive opposite the

### MONTEMORENCI FALLS!

Its furious waters plunging directly into the St. Lawrence from a precipice Two-Hundred and Fifty Feet above, present a scene unequalled for its picturesque grandeur; onward moving, the **Metropolis of British America; Wolf's Cove**; the plains of Abrihan and the frowning walls of Cape Diamond are next seen; when the

### CITADEL AND CITY OF QUEBEC

Appear in full view, five times besieged; their annals are land marks in the history of the Western Continent; the **Landing at Quebec and the Levee at the Parliament Buildings** with figures nearly the size of life standing out with a stereoscopic effect, never before produced on canvas, are viewed in succession and on the vision of the beholder by their unspeakable beauty, having examined the Military and Commercial advantages of this Gibraltar, now **MOUNT ROYAL**, from which

### MONTREAL!

Derives its name, and the city with her **GRANITE QUAY AND LOFTY DOMES**, elicit the scrutinizing gaze; next **VICTORIA BRIDGE**, inaugurated by H. R. H. Prince of Wales. This immense monument of man's ingenuity—two miles in length, being the largest bridge in the world, with the vast number of vessels steamboats and gigantic rafts, with canvas sails spread, forms an inspiring nautical scene. Now the

### BALL AT MONTREAL!

Given in honor of H. R. H. and Suite, in an immense hall, erected for the occasion is viewed; when the **CITY AND WATERS OF THE RIVER OTTAWA; CADILLAC FALLS**; the **New Parliament Buildings** of which H. R. H. laid their corner stone, and the **Great Canoe Regatta** of 200 barges, forming a grand corse, come into notice; the **Long Sault Rapids** are encountered, when

### THE THOUSAND ISLANDS

Attract the wandering eye. This vast Archipelago, is viewed at the close of day. Leaving the St. Lawrence, we enter the trochæus wave of **THE ONTARIO** and approach Kingston; soon the city with her impregnable Fortification and Martello Towers pass in stern review; anon the extensive harbor and flourishing

### CITY OF TORONTO!

Comes under observation; the reception of H. R. H. Prince of Wales, at this place, was hardly equaled at any other point in magnificent decorations, arches, columns, &c., the view delineates one vast Amphitheatre erected on the esplanade; now moving Westward, the head of the lake is doubled, when **KING ST., CITY OF HAMILTON** opens to the view, which scene closes **BRITISH NORTH AMERICA.**

## United States.

The action of this piece commences with the **WORLD-RENOVED CATARACT,**

### NIAGARA FALLS!

And every surrounding object of interest. **Goat Island; Terrace Tower; Under Canadian Falls; under American Falls; Horse Shoe Falls in Winter**; are viewed in succession. Following these thrilling views, the visit to the **WORLD'S ONLY CATARACT** as here represented—natural, life-like, stupendous and sublime, inspired with the sight of its heaven-born sublimity;

### THE SUSPENSION BRIDGE

THE WHIRLPOOL: Queenstown Heights and Niagara Falls in the distance, are nicely displayed. In leaving the mighty Niagara with its wild scene of beauty, and proceeding onward, we view the

### CITY AND HARBOR OF DETROIT!

The first city in the United States visited by H. R. H. Next, **HARBOR AND CITY OF CHICAGO**

### THE WESTERN PRAIRIES,

With Grouse and Quail Shooting, by sunset, thereby giving a richness to the scene, that cannot be excelled by any view in the world, showing the gorgeous beauty of **WESTERN SUNSET AND MOONLIGHT** on the Prairies, ending with the sublime spectacle of

### PRAIRIE ON FIRE

Still further, on the opposite bank of the **MISSISSIPPI** is one of the many striking views with which this magnificent painting abounds,

### THE CITY OF ST. LOUIS

Appearing with life-like fidelity, the numberless steamers and other water crafts, that constantly line the levee; showing a correct picture of this, the destined metropolis of the Western states; now turning our faces to the rising sun, we arrive at

### CINCINNATI,

The Queen City of the West, copied here with a truthfulness and skill that has never been beaten. The Artist has here given us in this work, objects just as they are now seen. The beautiful cities are as plain and distinct to the observer as they were to the artist when he sketched them. The buildings and streets are not run into a confused mass, hempering the mind and troubling the eye to distinguish one from the other, but all are distinctly visible, as though Genius had said to his pencil—"Give me a splendid church, handsome houses, noble vessels, the beautiful water, the green hill, the Indian mound, or the objects come out upon the canvas in all their natural beauty, under the sun, whether in the glare of noonday sun, or in the mild beams of the moonlight. Hence from the route, we will take a look at

### MAMMOTH CAVE

Visiting the **GOthic CHAPEL AND LEOH RIVER**, no fancy sketch, but nature's own mysterious hand at work, within this gorgeous and unapproachable laboratory, Stalagmite and Stalactite pillars supporting the vaulted roof and sun-driest crystalline incrustations on every side; all these conspire to present a scene beautiful beyond the mere power of imagination, and creating in the heart of every beholder mingled emotions of wonder, reverence and admiration. Returning to the route, we are presented with a view of

### PITTSBURG AND ITS ENVIRONS! WASHINGTON.

The Capital of the United States, with its various institutions, is graphically illustrated **at the East Room of the President's House; visit to the Review on Boston Common; and a Resplendent Entertainment at Music Hall!** magnificently decorated for the occasion with the colors of the two nations entwined, as are the hearts of the two great nations.

### CITY OF PHILADELPHIA, CITY OF BALTIMORE

### CITY OF NEW YORK

Are depicted with their diversified scenery and objects, that change of latitude would produce. **THE REVIEW OF THE MILITARY ON THE PARK, THE BALL AT THE ACADEMY OF MUSIC, THE REVIEW AT WEST POINT;**

### Hudson River and the City of Albany

Are all interesting, beyond conception, awakening in the beholder the most thrilling interest as he gazes with astonishment upon the views before him.

### Boston, the Modern Athens!

Next meets the eye, and presents undisputed claims of hospitality towards the royal party; among the various pageants are presented in **Torch-Light Demonstration; the Review on Boston Common; and a Resplendent Entertainment at Music Hall!** magnificently decorated for the occasion with the colors of the two nations entwined, as are the hearts of the two great nations.

### VIEW OF LOWELL

The Manchester of America, which sent forth an immense delegation to Boston, on the illustrious occasion.

### PORTLAND,

The terminus of the Grand Trunk Railway, and point of embarkation of H. R. H. and suite; also, a view of the embarkation is next seen. Thus having presented the cities, villages, the elegant mansion of the opulent merchant, the rustic cabin of the lonely woodman, the rude wigwam or lodge of the Indian, the precipitous cliff, and magnificent mountains, towering to the sky, and casting their broad shadows over the romantic woodland and picturesque islands, which gem the mighty rivers, covered with richest foliage of gorgeous hues, the endless variety of water crafts, the majestic steamers of the Eastern and Western waters, the rude flat boat and the light canoe, in fact all are represented, and convey a better idea of the Newfoundlandier, the French Canadian, the Hoosier of the West, the wild and savage Indian, and the enlightened New Englander, than volumes of books.

