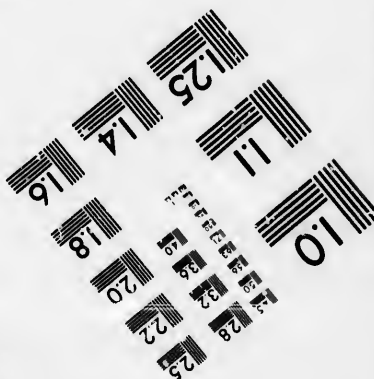
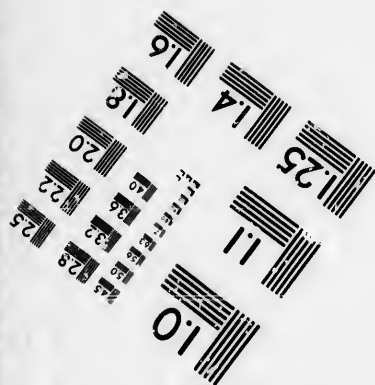
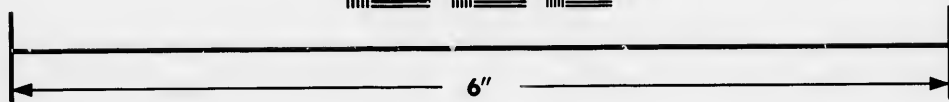
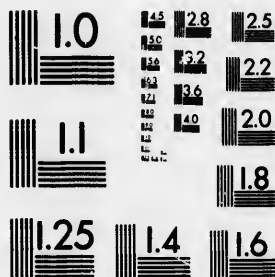


**IMAGE EVALUATION
TEST TARGET (MT-3)**



**Photographic
Sciences
Corporation**

23 WEST MAIN STREET
WEBSTER, N.Y. 14580
(716) 872-4503

13 28
14 32
15 36
16 40
17 44
18 48
19 52
20 56
21 60
22 64
23 68
24 72
25 76

**CIHM/ICMH
Microfiche
Series.**

**CIHM/ICMH
Collection de
microfiches.**



Canadian Institute for Historical Microreproductions / Institut canadien de microreproductions historiques

10
11
12
13
14
15
16
17
18
19
20
21
22
23
24
25

© 1985

Technical and Bibliographic Notes/Notes techniques et bibliographiques

The Institute has attempted to obtain the best original copy available for filming. Features of this copy which may be bibliographically unique, which may alter any of the images in the reproduction, or which may significantly change the usual method of filming, are checked below.

L'Institut a microfilmé le meilleur exemplaire qu'il lui a été possible de se procurer. Les détails de cet exemplaire qui sont peut-être uniques du point de vue bibliographique, qui peuvent modifier une image reproduite, ou qui peuvent exiger une modification dans la méthode normale de filmage sont indiqués ci-dessous.

- Coloured covers/
Couverture de couleur
- Covers damaged/
Couverture endommagée
- Covers restored and/or laminated/
Couverture restaurée et/ou pelliculée
- Cover title missing/
Le titre de couverture manque
- Coloured maps/
Cartes géographiques en couleur
- Coloured ink (i.e. other than blue or black)/
Encre de couleur (i.e. autre que bleue ou noire)
- Coloured plates and/or illustrations/
Planches et/ou illustrations en couleur
- Bound with other material/
Relié avec d'autres documents
- Tight binding may cause shadows or distortion
along interior margin/
La reliure serrée peut causer de l'ombre ou de la
distortion le long de la marge intérieure
- Blank leaves added during restoration may
appear within the text. Whenever possible, these
have been omitted from filming/
Il se peut que certaines pages blanches ajoutées
lors d'une restauration apparaissent dans le texte,
mais, lorsque cela était possible, ces pages n'ont
pas été filmées.
- Additional comments: /
Commentaires supplémentaires:

[Printed ephemera] 1 sheet (verso blank)

- Coloured pages/
Pages de couleur
- Pages damaged/
Pages endommagées
- Pages restored and/or laminated/
Pages restaurées et/ou pelliculées
- Pages discoloured, stained or foxed/
Pages décolorées, tachetées ou piquées
- Pages detached/
Pages détachées
- Showthrough/
Transparence
- Quality of print varies/
Qualité inégale de l'impression
- Includes supplementary material/
Comprend du matériel supplémentaire
- Only edition available/
Seule édition disponible
- Pages wholly or partially obscured by errata
slips, tissues, etc., have been refilmed to
ensure the best possible image/
Les pages totalement ou partiellement
obscurcies par un feuillet d'errata, une pelure,
etc., ont été filmées à nouveau de façon à
obtenir la meilleure image possible.

This item is filmed at the reduction ratio checked below/
Ce document est filmé au taux de réduction indiqué ci-dessous.

10X	14X	18X	22X	26X	30X
				✓	
12X	16X	20X	24X	28X	32X

The copy filmed here has been reproduced thanks to the generosity of:

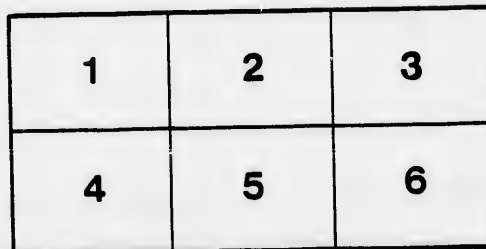
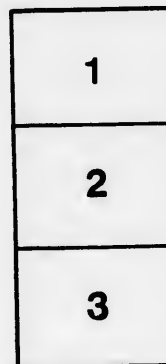
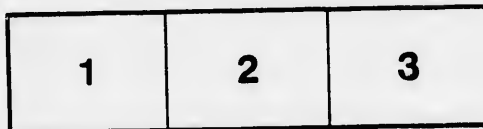
D. B. Weldon Library
University of Western Ontario
(Regional History Room)

The images appearing here are the best quality possible considering the condition and legibility of the original copy and in keeping with the filming contract specifications.

Original copies in printed paper covers are filmed beginning with the front cover and ending on the last page with a printed or illustrated impression, or the back cover when appropriate. All other original copies are filmed beginning on the first page with a printed or illustrated impression, and ending on the last page with a printed or illustrated impression.

The last recorded frame on each microfiche shall contain the symbol \rightarrow (meaning "CONTINUED"), or the symbol ∇ (meaning "END"), whichever applies.

Maps, plates, charts, etc., may be filmed at different reduction ratios. Those too large to be entirely included in one exposure are filmed beginning in the upper left hand corner, left to right and top to bottom, as many frames as required. The following diagrams illustrate the method:



L'exemplaire filmé fut reproduit grâce à la générosité de:

D. B. Weldon Library
University of Western Ontario
(Regional History Room)

Les images suivantes ont été reproduites avec le plus grand soin, compte tenu de la condition et de la netteté de l'exemplaire filmé, et en conformité avec les conditions du contrat de filmage.

Les exemplaires originaux dont la couverture en papier est imprimée sont filmés en commençant par le premier plat et en terminant soit par la dernière page qui comporte une empreinte d'impression ou d'illustration, soit par le second plat, selon le cas. Tous les autres exemplaires originaux sont filmés en commençant par la première page qui comporte une empreinte d'impression ou d'illustration et en terminant par la dernière page qui comporte une telle empreinte.

Un des symboles suivants apparaîtra sur la dernière image de chaque microfiche, selon le cas: le symbole \rightarrow signifie "A SUIVRE", le symbole ∇ signifie "FIN".

Les cartes, planches, tableaux, etc., peuvent être filmés à des taux de réduction différents. Lorsque le document est trop grand pour être reproduit en un seul cliché, il est filmé à partir de l'angle supérieur gauche, de gauche à droite, et de haut en bas, en prenant le nombre d'images nécessaire. Les diagrammes suivants illustrent la méthode.

errata
to

pelure,
on à



32X

Sir,

The Court of General Quarter Sessions having appointed you a Constable for the current year from March 1859 to March 1860, you are hereby required to take the oath prescribed by the Statute, before a Magistrate, previous to entering upon the duties of your office.

You are further required to transmit by post to this office, the prefixed Certificate by the Justice, of your having been sworn, within one month from the receipt thereof.

I am, Sir,

Your obedient servant,

Clerk of the Peace, United Counties of Haron & Bruce.

Table of Fees to be taken and received by CONSTABLES as provided for by the Act of the Provincial Parliament 8 Victoria, Chapter 38.

Where a fee is specifically assigned, under any Statute, for a service for which a fee has also been fixed in this Table, then, in every such case, it will be the fee mentioned in the Statute, which is to be charged for the service, whether it be greater or less than that set down in the Table.

	To be paid out of the County Funds.			To be paid by the party.		
	£	s.	d.	£	s.	d.
1. Arrest of each individual upon a warrant. (To be paid out of the County funds, in cases of indictable offences, and by the party in other cases.)	0	5	0	0	5	0
2. Serving summons or subpoena. (To be paid out of the County funds, in cases of indictable offences, and by the party in other cases.)	0	1	3	0	1	3
3. Mileage, 6d. per mile. (To be paid out of the County funds, in cases of indictable offences, and by the party in other cases.)	0	0		0	0	6
4. Attending Assizes or Sessions, per day,	0	5	0	0	0	0
5. Attending any Justice on trials, under the summary punishment acts, (to be paid by the party)	0	0	0	0	5	0
6. Attending any Justice on the examination of Prisoners charged with any crime, for each day necessarily employed,	0	5	0	0	0	0
7. Mileage in going to serve summons or warrant, when the service has not been effected; the Justices in Sessions to be satisfied that due diligence has been used	0	0	6	0	0	6
8. Taking Prisoners to Gaol, 4d. per mile, exclusive of disbursements necessarily expended in their conveyance. (To be paid out of the County funds, or by the party, as the case may be.)	0	0	4	0	0	4
9. Summoning Jury for Inquest,	0	10	0	0	0	0
10. Attending Inquest, for each day other than the first,	0	5	0	0	0	0
11. Serving notice of appointment of Constables, when personally served,	0	2	6	0	0	0
12. Laying upon distress warrant and returning the same where charge not provided by law,	0	5	0	0	5	0
13. Advertising and selling under distress warrant, where a charge not provided by law.	0	5	0	0	5	0
14. Travelling to make distress, or to search for goods to make distress when no goods are found, 4d. per mile, when charge not otherwise provided by law, the Justices in Sessions, to be satisfied, that due diligence has been used						
15. Appraisement, whether by one Appraiser or more, 4d. in the pound on the value of the Goods.						

N. B.—All Accounts from Constables must be in duplicate, and delivered to the Clerk of the Peace, before the first day of each Sessions; and must state the service, names, dates, causes or suits, and distances specifically; and the name of the Magistrate who issued the warrant; and must be verified by an affidavit attached, in the form to be furnished by the Magistrate from the Clerk of the Peace.

