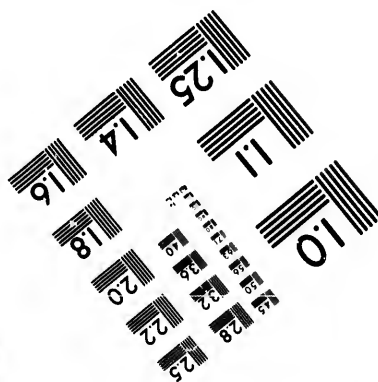
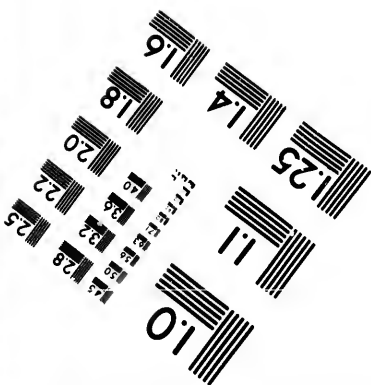
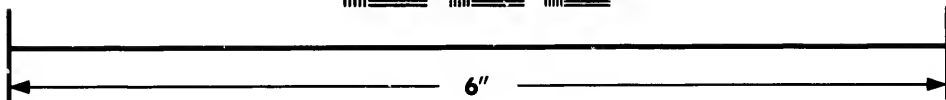
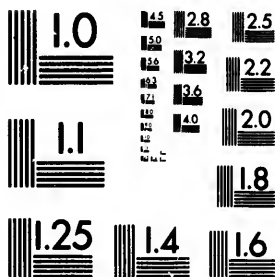


**IMAGE EVALUATION
TEST TARGET (MT-3)**



**Photographic
Sciences
Corporation**

23 WEST MAIN STREET
WEBSTER, N.Y. 14580
(716) 872-4503

15 28 25
18 32
20 22
24
118

**CIHM/ICMH
Microfiche
Series.**

**CIHM/ICMH
Collection de
microfiches.**



Canadian Institute for Historical Microreproductions / Institut canadien de microreproductions historiques

11
01
57

© 1985

Technical and Bibliographic Notes/Notes techniques et bibliographiques

The Institute has attempted to obtain the best original copy available for filming. Features of this copy which may be bibliographically unique, which may alter any of the images in the reproduction, or which may significantly change the usual method of filming, are checked below.

L'Institut a microfilmé le meilleur exemplaire qu'il lui a été possible de se procurer. Les détails de cet exemplaire qui sont peut-être uniques du point de vue bibliographique, qui peuvent modifier une image reproduite, ou qui peuvent exiger une modification dans la méthode normale de filmage sont indiqués ci-dessous.

- | | |
|---|---|
| <input type="checkbox"/> Coloured covers/
Couverture de couleur | <input type="checkbox"/> Coloured pages/
Pages de couleur |
| <input type="checkbox"/> Covers damaged/
Couverture endommagée | <input type="checkbox"/> Pages damaged/
Pages endommagées |
| <input type="checkbox"/> Covers restored and/or laminated/
Couverture restaurée et/ou pelliculée | <input type="checkbox"/> Pages restored and/or laminated/
Pages restaurées et/ou pelliculées |
| <input type="checkbox"/> Cover title missing/
Le titre de couverture manque | <input checked="" type="checkbox"/> Pages discoloured, stained or foxed/
Pages décolorées, tachetées ou piquées |
| <input type="checkbox"/> Coloured maps/
Cartes géographiques en couleur | <input type="checkbox"/> Pages detached/
Pages détachées |
| <input type="checkbox"/> Coloured ink (i.e. other than blue or black)/
Encre de couleur (i.e. autre que bleue ou noire) | <input checked="" type="checkbox"/> Showthrough/
Transparence |
| <input type="checkbox"/> Coloured plates and/or illustrations/
Planches et/ou illustrations en couleur | <input type="checkbox"/> Quality of print varies/
Qualité inégale de l'impression |
| <input checked="" type="checkbox"/> Bound with other material/
Relié avec d'autres documents | <input type="checkbox"/> Includes supplementary material/
Comprend du matériel supplémentaire |
| <input type="checkbox"/> Tight binding may cause shadows or distortion along interior margin/
La reliure serrée peut causer de l'ombre ou de la distortion le long de la marge intérieure | <input type="checkbox"/> Only edition available/
Seule édition disponible |
| <input type="checkbox"/> Blank leaves added during restoration may appear within the text. Whenever possible, these have been omitted from filming.
Il se peut que certaines pages blanches ajoutées lors d'une restauration apparaissent dans le texte, mais, lorsque cela était possible, ces pages n'ont pas été filmées. | <input type="checkbox"/> Pages wholly or partially obscured by errata slips, tissues, etc., have been refilmed to ensure the best possible image/
Les pages totalement ou partiellement obscurcies par un feuillet d'errata, une pelure, etc., ont été filmées à nouveau de façon à obtenir la meilleure image possible. |
| <input type="checkbox"/> Additional comments:
Commentaires supplémentaires: | |

This item is filmed at the reduction ratio checked below/
Ce document est filmé au taux de réduction indiqué ci-dessous.

10X	12X	14X	16X	18X	20X	22X	24X	26X	28X	30X	32X
						✓					

The copy filmed here has been reproduced thanks to the generosity of:

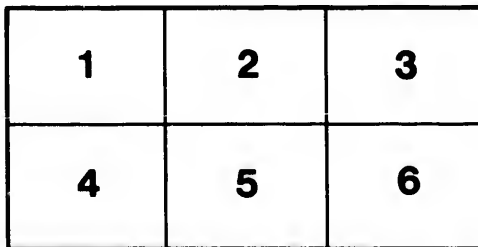
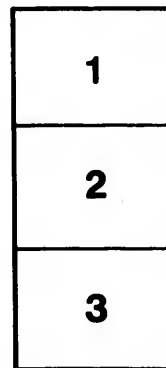
Douglas Library
Queen's University

The images appearing here are the best quality possible considering the condition and legibility of the original copy and in keeping with the filming contract specifications.

Original copies in printed paper covers are filmed beginning with the front cover and ending on the last page with a printed or illustrated impression, or the back cover when appropriate. All other original copies are filmed beginning on the first page with a printed or illustrated impression, and ending on the last page with a printed or illustrated impression.

The last recorded frame on each microfiche shall contain the symbol \rightarrow (meaning "CONTINUED"), or the symbol ∇ (meaning "END"), whichever applies.

Maps, plates, charts, etc., may be filmed at different reduction ratios. Those too large to be entirely included in one exposure are filmed beginning in the upper left hand corner, left to right and top to bottom, as many frames as required. The following diagrams illustrate the method:



L'exemplaire filmé fut reproduit grâce à la générosité de:

Douglas Library
Queen's University

Les images suivantes ont été reproduites avec le plus grand soin, compte tenu de la condition et de la netteté de l'exemplaire filmé, et en conformité avec les conditions du contrat de filmage.

Les exemplaires originaux dont la couverture en papier est imprimée sont filmés en commençant par le premier plat et en terminant soit par la dernière page qui comporte une empreinte d'impression ou d'illustration, soit par le second plat, selon le cas. Tous les autres exemplaires originaux sont filmés en commençant par la première page qui comporte une empreinte d'impression ou d'illustration et en terminant par la dernière page qui comporte une telle empreinte.

Un des symboles suivants apparaîtra sur la dernière image de chaque microfiche, selon le cas: le symbole \rightarrow signifie "A SUIVRE", le symbole ∇ signifie "FIN".

Les cartes, planches, tableaux, etc., peuvent être filmés à des taux de réduction différents. Lorsque le document est trop grand pour être reproduit en un seul cliché, il est filmé à partir de l'angle supérieur gauche, de gauche à droite, et de haut en bas, en prenant le nombre d'images nécessaire. Les diagrammes suivants illustrent la méthode.

errata
to

pelure,
n à

32X

REV. AND DE

The Comm
these might be
you, that a Bill
sanction, has be

That Bill p
Salaries of all N
Act. But it al
their Salaries, b
lives are suppos
necessary before

As a matte
to all payments
in a just and lib

The Comm
hopes that if ea
Synod to act in
hands of the Clo
of the present a
dowment of the

This endov
will be manage
therefore not li

The attain
some measure o
the Committee.

It is not t
a benefit to the
is, that measur

To this en
may be

First.--
effected.

PRIVATE AND CONFIDENTIAL.

MONTREAL, 18th December, 1854.

REV. AND DEAR SIR,

The Committee appointed by the Synod, to watch over the interests of our Church, in so far as these might be affected by the action of the Legislature on the Clergy Reserves, beg now to inform you, that a Bill for their entire Secularisation, has been passed, and having received the Governor's sanction, has become law.

That Bill provides in terms of the Imperial Act, for the payment, during their incumbency, of the Salaries of all Ministers settled previous to the 9th May, 1853, the date of the passage of the Imperial Act. But it also contains a clause authorising the Governor in Council to commute with Ministers for their Salaries, by the immediate payment of such sums as, on the principles of Life Assurance, their lives are supposed to be worth; the consent, however, of the proper Ecclesiastical authorities being necessary before any commutation can be effected.

As a matter of public policy, the Government is desirous of putting an end as speedily as possible, to all payments of Clergy from the public purse, and professes to be willing to commute immediately, in a just and liberal spirit.

The Committee are of opinion that advantage should be taken of this offer, and they entertain hopes that if each Minister will at once confer authority on such parties as may be authorised by the Synod to act in the matter, a sum may be obtained, the interest of which, with that of the balance in the hands of the Clergy Reserve Commissioners, will be sufficient to pay the full, or nearly the full amount of the present allowances from that fund, while the capital will remain untouched for the permanent endowment of the Church.

This endowment will be entirely free from control either by the Government or Parliament and will be managed solely by parties appointed by the Synod, as the private property of the Church, and therefore not liable to be attacked amidst the strife of political warfare.

The attainment of this result must be regarded as in the highest degree desirable, and would in some measure compensate for the loss of the Reserves, as what is lost in amount would, in the opinion of the Committee, be gained in security.

It is not to be supposed that even if some personal sacrifice was necessary to secure so important a benefit to the Church, Ministers would shrink from making it: but all that seems necessary at present is, that measures should be promptly taken for a general commutation.

To this end a meeting of Synod is forthwith required, the business to be transacted at which may be

First.—To authorise commutation; and fix generally, at least, the terms on which it should be effected.

Second.—To recommend immediate commutation to all the Ministers of our Church.

Third.—To name parties to act for the Synod in the matter of commutation, and to recommend that Ministers individually give to the same parties the necessary power to commute for them.

Fourth.—To appoint a Committee to take the necessary steps to get an Act of Incorporation for the management of the General Fund.

Fifth.—To lay down the general rules or principles by which such management is to be guided.

With a view to this important business a requisition has been addressed to the Moderator, requesting him to summon a meeting of Synod as early as the forms of the Church will admit.

At this season of the year a very numerous attendance of Ministers is not to be expected; the Committee have, therefore, judged it necessary to give these explanations, that those who do not attend personally, may have an opportunity of communicating their views or suggestions by writing.

As soon as the Synod has given its decision on the various points alluded to, printed forms giving power of Attorney to Commissioners appointed by the Synod, will be sent to each Minister for signature, and every exertion will be made to have a safe and satisfactory arrangement completed without delay, nor can it be doubted that prompt and united action will, under the blessing of God, be attended with the most beneficial results to the Church.

We are,

Reverend and Dear Sir,

Your's faithfully,

JOHN COOK, D. D., *Chairman.*

Hugh Allan . *Secretary.*

To the Reverend

J. H. Mackerras
Darlington

