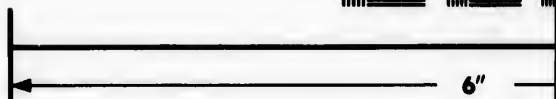
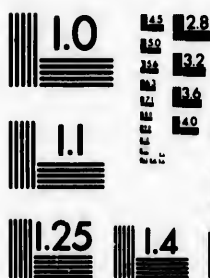
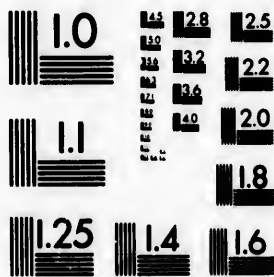
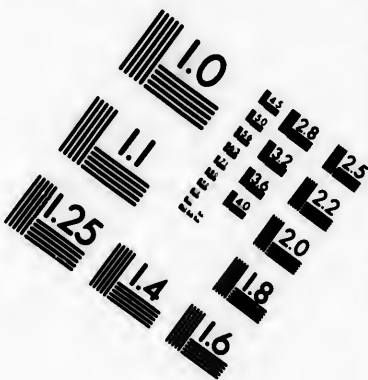


**IMAGE EVALUATION
TEST TARGET (1)**



**Photographic
Sciences
Corporation**

IMAGE EVALUATION TEST TARGET (MT-3)



6"

Photographic
Sciences
Corporation

23 WEST MAIN STREET
WEBSTER, N.Y. 14580
(716) 872-4502



25

**CIHM/ICMH
Microfiche
Series.**

C
C
m



Canadian Institute for Historical Microreproductions / Institut

© 19

IH

**CIHM/ICMH
Collection de
microfiches.**



productions / Institut canadien de microreproductions historiques

1982

Technical and Bibliographic Notes/Notes techn

The institute has attempted to obtain the best original copy available for filming. Features of this copy which may be bibliographically unique, which may alter any of the images in the reproduction, or which may significantly change the usual method of filming, are checked below.

L'Inst
qu'il
de ce
point
une l
modi
sont

- Coloured covers/
Couverture de couleur
- Covers damaged/
Couverture endommagée
- Covers restored and/or laminated/
Couverture restaurée et/ou pelliculée
- Cover title missing/
Le titre de couverture manque
- Coloured maps/
Cartes géographiques en couleur
- Coloured ink (i.e. other than blue or black)/
Encre de couleur (i.e. autre que bleue ou noire)
- Coloured plates and/or illustrations/
Planches et/ou illustrations en couleur
- Bound with other material/
Relié avec d'autres documents
- Tight binding may cause shadows or distortion
along interior margin/
La reliure serrée peut causer de l'ombre ou de la
distortion le long de la marge intérieure
- Blank leaves added during restoration may
appear within the text. Whenever possible, these
have been omitted from filming/
Il se peut que certaines pages blanches ajoutées
lors d'une restauration apparaissent dans le texte,
mais, lorsque cela était possible, ces pages n'ont
pas été filmées.
- Additional comments:/
Commentaires supplémentaires:

This item is filmed at the reduction ratio checked below/
Ce document est filmé au taux de réduction indiqué ci-dessous.

10X		14X		18X		22X	
<input type="checkbox"/>	<input type="checkbox"/>	<input type="checkbox"/>	<input type="checkbox"/>	<input type="checkbox"/>	<input type="checkbox"/>	<input type="checkbox"/>	<input type="checkbox"/>
	12X		16X		20X		

Photographic Notes/Notes techniques et bibliographiques

at
of this

ange
low.

L'Institut a microfilmé le meilleur exemplaire qu'il lui a été possible de se procurer. Les détails de cet exemplaire qui sont peut-être uniques du point de vue bibliographique, qui peuvent modifier une image reproduite, ou qui peuvent exiger une modification dans la méthode normale de filmage sont indiqués ci-dessous.

- Coloured pages/
Pages de couleur
- Pages damaged/
Pages endommagées
- Pages restored and/or laminated/
Pages restaurées et/ou pelliculées
- Pages discoloured, stained or foxed/
Pages décolorées, tachetées ou piquées
- Pages detached/
Pages détachées
- Showthrough/
Transparence
- Quality of print varies/
Qualité inégale de l'impression
- Includes supplementary material/
Comprend du matériel supplémentaire
- Only edition available/
Seule édition disponible
- Pages wholly or partially obscured by errata slips, tissues, etc., have been refilmed to ensure the best possible image/
Les pages totalement ou partiellement obscurcies par un feuillet d'errata, une pelure, etc., ont été filmées à nouveau de façon à obtenir la meilleure image possible.

ack)/
ou noire)

distortion
e ou de la

may
ible, these
ajoutées
ns le texte,
pages n'ont

cked below/
indiqué ci-dessous.

											<input checked="" type="checkbox"/>	
20X			22X				26X				30X	32X

20X

24X

28X

32X

The copy filmed here has been reproduced thanks to the generosity of:

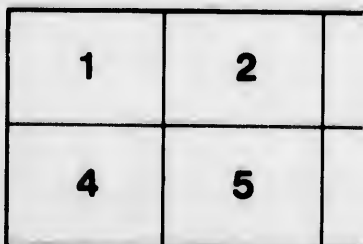
Library Division
Provincial Archives of British Columbia

The images appearing here are the best quality possible considering the condition and legibility of the original copy and in keeping with the filming contract specifications.

Original copies in printed paper covers are filmed beginning with the front cover and ending on the last page with a printed or illustrated impression, or the back cover when appropriate. All other original copies are filmed beginning on the first page with a printed or illustrated impression, and ending on the last page with a printed or illustrated impression.

The last recorded frame on each microfiche shall contain the symbol → (meaning "CONTINUED"), or the symbol ▼ (meaning "END"), whichever applies.

Maps, plates, charts, etc., may be filmed at different reduction ratios. Those too large to be entirely included in one exposure are filmed beginning in the upper left hand corner, left to right and top to bottom, as many frames as required. The following diagrams illustrate the method:



L'ex
géné

Les
plus
de la
conf
filma

Les
papi
par l
dern
d'im
plat,
origi
premi
d'im
le de
emp

Un d
dern
ces:
symb

Les c
filme
Lorsq
repro
de l'a
et de
d'ima
illust

chanks

L'exemplaire filmé fut reproduit grâce à la
générosité de:

mbia

Library Division
Provincial Archives of British Columbia

lity
ility

Les images suivantes ont été reproduites avec le
plus grand soin, compte tenu de la condition et
de la netteté de l'exemplaire filmé, et en
conformité avec les conditions du contrat de
filmage.

lmed
on
pres-
all
n the
s-
nted

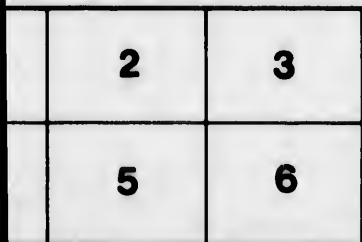
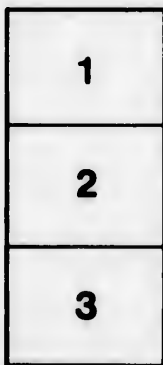
Les exemplaires originaux dont la couverture en
papier est imprimée sont filmés en commençant
par le premier plat et en terminant soit par la
dernière page qui comporte une empreinte
d'impression ou d'illustration, soit par le second
plat, selon le cas. Tous les autres exemplaires
originaux sont filmés en commençant par la
première page qui comporte une empreinte
d'impression ou d'illustration et en terminant par
la dernière page qui comporte une telle
empreinte.

N-
"),

Un des symboles suivants apparaîtra sur la
dernière image de chaque microfiche, selon le
cas: le symbole \rightarrow signifie "A SUIVRE", le
symbole ∇ signifie "FIN".

o be
to
he

Les cartes, planches, tableaux, etc., peuvent être
filmés à des taux de réduction différents.
Lorsque le document est trop grand pour être
reproduit en un seul cliché, il est filmé à partir
de l'angle supérieur gauche, de gauche à droite,
et de haut en bas, en prenant le nombre
d'images nécessaire. Les diagrammes suivants
illustrent la méthode.



List of Subscribers and Donors

—TO THE—

ROYAL HOSPITAL, VICTORIA,

From 20th June, 1861, to 13th January, 1862.

Table with columns: NAME, DONA-TIONS, SUBSCRIP-TIONS.

The following donations and subscriptions were collected by Dr Helmecken,

Table with columns: NAME, DONA-TIONS, SUBSCRIP-TIONS.

Table with columns: NAME, DONA-TIONS, SUBSCRIP-TIONS.

Amount collected by Dr. Helmecken, \$1,210 43

Table with columns: NAME, DONA-TIONS, SUBSCRIP-TIONS.

Amount of Donations, \$1142 20

Amount of Subscriptions, 783 00

Amount from Inmates, 180 87

Total, \$2106 07

AUG. F. PEMBERTON, Treasurer.

VICTORIA, V. I., 16th Jan., 1862.

Statement of the Income and Expenditure of the ROYAL HOSPITAL, Victoria, for the Years 1858-59-60, and continued to 30th June, 1861.

HEADS OF RECEIPT.	
1859—Donation from Grand Jury, per S. Franklin, Esq.,.....	100 00
Collection in aid at Christ's Church,....	149 00
Grant from Government, towards building Hospital,.....	1000 00
Proceeds of a Concert given in aid by Philharmonic Society,....	302 00
Proceeds of a Ball at Royal Hotel, per T. Harris, Esq.,.....	281 00
Proceeds of a Concert given in aid by the officers and men of H. M. S. Gaugay,....	420 50
Hudson's Bay Company, supplies &c. advanced,.....	1175 40
Hudson's Bay Company, supplies &c. advanced,.....	417 10
General Subscriptions and Donations to 31st Dec, 1859,....	1402 12
Balance due to the Treasurer 31st Dec. 1859,.....	113 13
	<u>\$6927 06</u>

1860—Government of British Columbia, donation.....	970 00
Collection in aid at Christ's Church,....	325 00
Proceeds of a Concert given in aid, by officers and men of H. M. S. Gaugay,....	158 00
Proceeds of a concert given in aid at Colonial Theatre,....	226 50
Subscriptions and Donations to 31st Dec. 1860,.....	1425 72
Balance due to the Treasurer, 31st Dec. 1860,.....	141 23
	<u>\$3107 12</u>
	<u>\$9248 38</u>

1861—From St. John's Church Hospital Box,.....	20 50
Subscriptions and Donations to 30th June 1861,.....	297 80
	<u>\$ 318 30</u>
Balance due to the Treasurer, 30th June 1861,.....	506 64
	<u>\$824 94</u>

HEADS OF EXPENDITURE.	
1859—Paid on Building Account,.....	\$225 00
Paid on Provisions Account,.....	983 52
Paid on Medical Account,.....	813 39
Paid on Incidental Account,.....	319 74
Paid on Funeral Account,.....	231 25
Paid on Wages Account,.....	1080 00
Paid on Furniture Account,.....	291 44
Paid on Rent Account, (Building at Broad st., 1858-9),.....	210 00
Paid on Clothing Account,.....	1 75
	<u>\$6927 06</u>

1860—Balance due to the Treasurer, 31st Dec. 1859, bro's forward,.....	\$ 113 13
Paid on Provisions Account,.....	1970 84
Paid on Building Account,.....	37 75
Paid on Furniture Account,.....	8 87
Paid on Incidental Account,.....	363 22
Paid on Medical Account,.....	7 00
Paid on Funeral Account,.....	19 00
Paid on Wages Account,.....	275 30
Paid on Clothing Account,.....	1362 25
	<u>\$7248 38</u>

1861—Balance due to the Treasurer, 31st Dec. 1860, bro's forward,.....	\$111 25
Paid on Provisions Account,.....	59 94
Paid on Medical Account,.....	75
Paid on Funeral Account,.....	36 00
Paid on Wages Account,.....	348 50
Paid on Incidental Account,.....	25 10
Paid on Furniture Account,.....	4 25
Paid on Building Account,.....	23 65
Paid on Clothing Account,.....	14 00
	<u>\$ 824 94</u>

I hereby certify the above to be a true and correct statement of the Accounts of the Royal Hospital, Victoria, as made up to the 30th of June last, and examined by me with the Books and Vouchers.

AUDIT OFFICE, Victoria Oct. 10, 1861

ROBERT KER.

Statement of Income and Expenditure of the ROYAL HOSPITAL, from 30th June to 31st December, 1861.

HEADS OF RECEIPT.	
1861 Nov. 30—Grant from Government of British Columbia,.....	\$1949 00
Govr's. Douglas, marriage license, per Rev. E. Colledge,.....	100 00
Christ Church, 3 collections,....	100 25
Grants from Government of Vancouver Island,.....	2910 00
Proceeds of Concert in aid, at Victoria Theatre on 29th Sept.,....	73 50
Donations from British Columbia Miners, per W. T. Ballou,....	155 00
General Subscriptions and Donations, to 30th November,....	169 37
	<u>\$ 5439 12</u>
	<u>\$5439 12</u>

1861 Dec. 31—Balance in Treasurer's hands, 30th Nov. 1861,.....	\$ 664 13
General Subscriptions and Donations during the month of Dec.,.....	1061 60
Sum overcharged in July account (see cash book).....	83
	<u>\$1650 13</u>
	<u>\$1650 13</u>

HEADS OF EXPENDITURE.	
1861 Nov. 30—Balance due to the Treasurer 30th June,.....	\$ 306 64
Paid on Provision account,.....	1690 69
Paid on Wages Account,.....	702 50
Paid on Clothing Account,.....	11 76
Paid on Medical Account,.....	1541 63
Paid on Incidental Account,.....	127 25
Paid on Funeral Account,.....	135 00
Paid on Furniture Account,.....	41 59
Paid on Building Account,.....	3 50
Paid on Bedding Account,.....	42 12
Balance in Treasurer's hands, 30th Nov. 1861,.....	4871 09
	<u>361 13</u>
	<u>\$5439 12</u>

1861 Dec 31—Paid on Provision Account,.....	\$1044 74
Paid on Wages Account,.....	158 00
Paid on Clothing Account,.....	3 50
Paid on Medical Account,.....	172 00
Paid on Incidental Account,.....	37 37
Paid on Funeral Account,.....	69 82
Paid on Furniture Account,.....	160 34
Balance in Treasurer's hands, 31st Dec. 1861,.....	13 45
	<u>\$1650 13</u>

I certify the above to be a true and correct statement of the Accounts of the Royal Hospital, Victoria, as made up to the 31st of Dec. last, and examined by me with the Books and Vouchers.

AUDIT OFFICE, Victoria, V. I., Jan. 10, 1862.

ROBERT KER.



