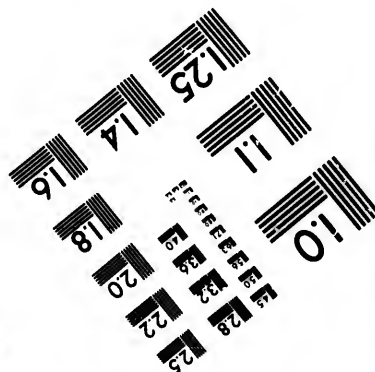
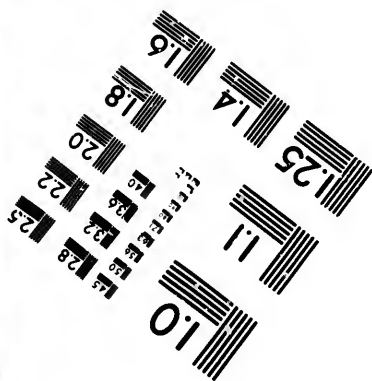
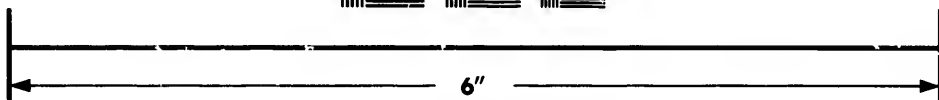
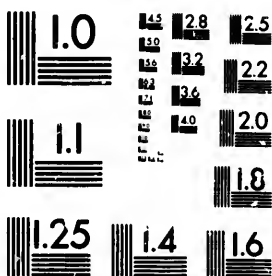


**IMAGE EVALUATION
TEST TARGET (MT-3)**



**Photographic
Sciences
Corporation**

23 WEST MAIN STREET
WEBSTER, N.Y. 14580
(716) 872-4503

23
22
21
20
19
18

**CIHM/ICMH
Microfiche
Series.**

**CIHM/ICMH
Collection de
microfiches.**



Canadian Institute for Historical Microreproductions / Institut canadien de microreproductions historiques

10

© 1983

Technical and Bibliographic Notes/Notes techniques et bibliographiques

The Institute has attempted to obtain the best original copy available for filming. Features of this copy which may be bibliographically unique, which may alter any of the images in the reproduction, or which may significantly change the usual method of filming, are checked below.

L'Institut a microfilmé le meilleur exemplaire qu'il lui a été possible de se procurer. Les détails de cet exemplaire qui sont peut-être uniques du point de vue bibliographique, qui peuvent modifier une image reproduite, ou qui peuvent exiger une modification dans la méthode normale de filmage sont indiqués ci-dessous.

- Coloured covers/
Couverture de couleur
- Covers damaged/
Couverture endommagée
- Covers restored and/or laminated/
Couverture restaurée et/ou pelliculée
- Cover title missing/
Le titre de couverture manque
- Coloured maps/
Cartes géographiques en couleur
- Coloured ink (i.e. other than blue or black)/
Encre de couleur (i.e. autre que bleue ou noire)
- Coloured plates and/or illustrations/
Planches et/ou illustrations en couleur
- Bound with other material/
Relié avec d'autres documents
- Tight binding may cause shadows or distortion along interior margin/
La reliure serrée peut causer de l'ombre ou de la distortion le long de la marge intérieure
- Blank leaves added during restoration may appear within the text. Whenever possible, these have been omitted from filming/
Il se peut que certaines pages blanches ajoutées lors d'une restauration apparaissent dans le texte, mais, lorsque cela était possible, ces pages n'ont pas été filmées.
- Additional comments:/
Commentaires supplémentaires:

- Coloured pages/
Pages de couleur
- Pages damaged/
Pages endommagées
- Pages restored and/or laminated/
Pages restaurées et/ou pelliculées
- Pages discoloured, stained or foxed/
Pages décolorées, tachetées ou piquées
- Pages detached/
Pages détachées
- Showthrough/
Transparence
- Quality of print varies/
Qualité inégale de l'impression
- Includes supplementary material/
Comprend du matériel supplémentaire
- Only edition available/
Seule édition disponible
- Pages wholly or partially obscured by errata slips, tissues, etc., have been refilmed to ensure the best possible image/
Les pages totalement ou partiellement obscurcies par un feuillet d'errata, une pelure, etc., ont été filmées à nouveau de façon à obtenir la meilleure image possible.

This item is filmed at the reduction ratio checked below/
Ce document est filmé au taux de réduction indiqué ci-dessous.

10X	12X	14X	16X	18X	20X	22X	24X	26X	28X	30X	32X
<input type="checkbox"/>	<input type="checkbox"/>	<input type="checkbox"/>	<input type="checkbox"/>	<input type="checkbox"/>	<input type="checkbox"/>	<input checked="" type="checkbox"/>	<input type="checkbox"/>	<input type="checkbox"/>	<input type="checkbox"/>	<input type="checkbox"/>	<input type="checkbox"/>

The copy filmed here has been reproduced thanks to the generosity of:

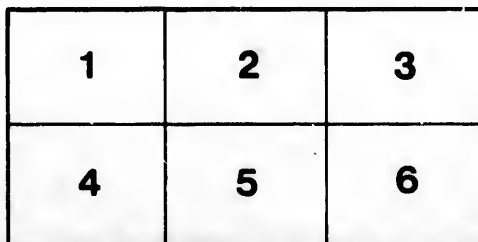
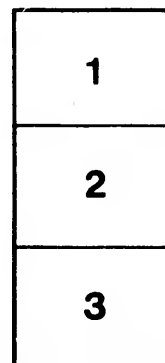
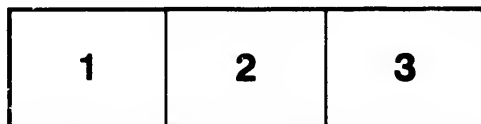
Hamilton Public Library

The images appearing here are the best quality possible considering the condition and legibility of the original copy and in keeping with the filming contract specifications.

Original copies in printed paper covers are filmed beginning with the front cover and ending on the last page with a printed or illustrated impression, or the back cover when appropriate. All other original copies are filmed beginning on the first page with a printed or illustrated impression, and ending on the last page with a printed or illustrated impression.

The last recorded frame on each microfiche shall contain the symbol \rightarrow (meaning "CONTINUED"), or the symbol ∇ (meaning "END"), whichever applies.

Maps, plates, charts, etc., may be filmed at different reduction ratios. Those too large to be entirely included in one exposure are filmed beginning in the upper left hand corner, left to right and top to bottom, as many frames as required. The following diagrams illustrate the method:



L'exemplaire filmé fut reproduit grâce à la générosité de:

Hamilton Public Library

Les images suivantes ont été reproduites avec le plus grand soin, compte tenu de la condition et de la netteté de l'exemplaire filmé, et en conformité avec les conditions du contrat de filmage.

Les exemplaires originaux dont la couverture en papier est imprimée sont filmés en commençant par le premier plat et en terminant soit par la dernière page qui comporte une empreinte d'impression ou d'illustration, soit par le second plat, selon le cas. Tous les autres exemplaires originaux sont filmés en commençant par la première page qui comporte une empreinte d'impression ou d'illustration et en terminant par la dernière page qui comporte une telle empreinte.

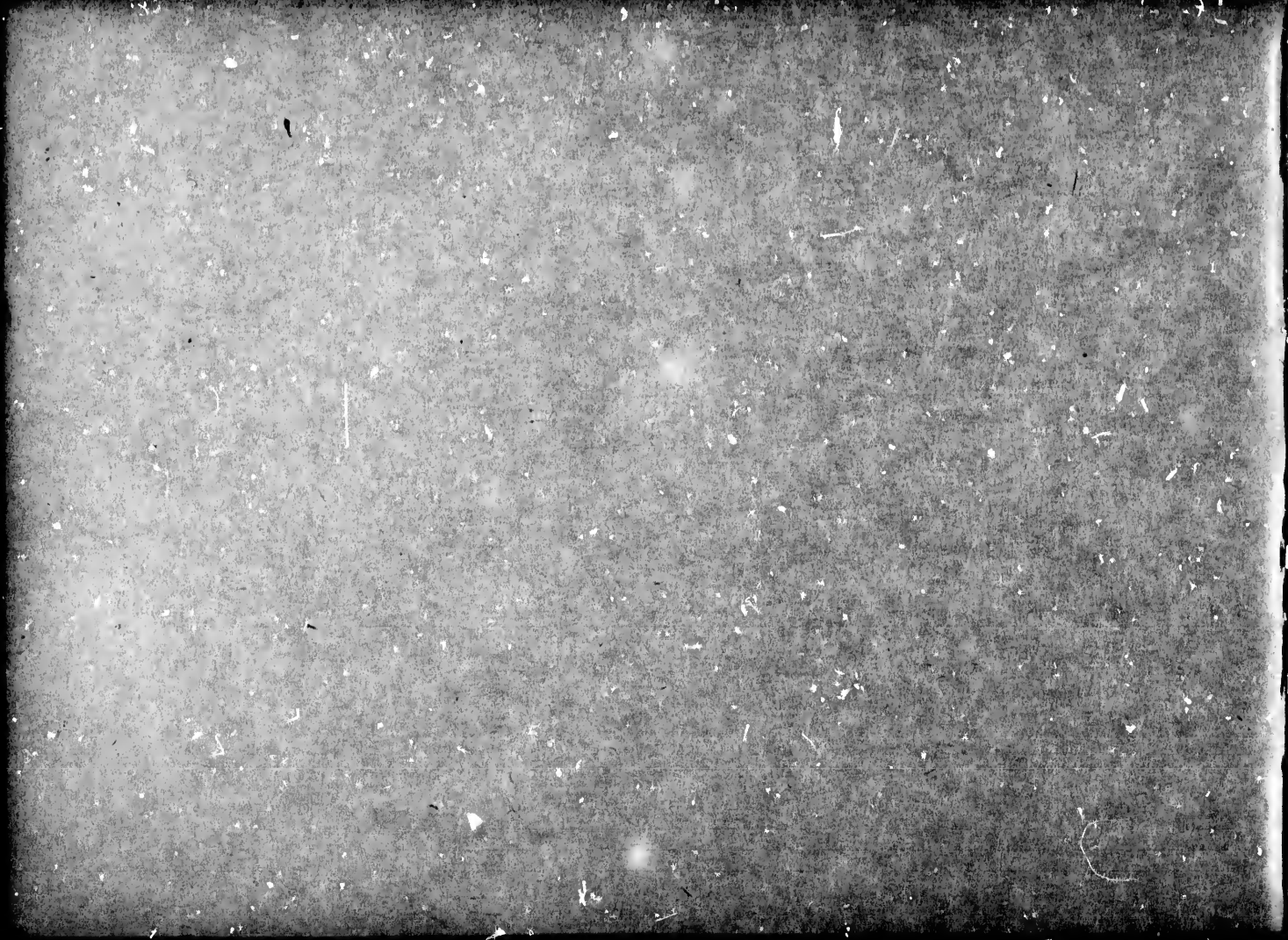
Un des symboles suivants apparaîtra sur la dernière image de chaque microfiche, selon le cas: le symbole \rightarrow signifie "A SUIVRE", le symbole ∇ signifie "FIN".

Les cartes, planches, tableaux, etc., peuvent être filmés à des taux de réduction différents. Lorsque le document est trop grand pour être reproduit en un seul cliché, il est filmé à partir de l'angle supérieur gauche, de gauche à droite, et de haut en bas, en prenant le nombre d'images nécessaire. Les diagrammes suivants illustrent la méthode.

alls
du
difier
une
nage

rata
o

elure,
à



FIFTY GLIMPSES
OF
TORONTO
AND VICINITY

FROM RECENT PHOTOGRAPHS

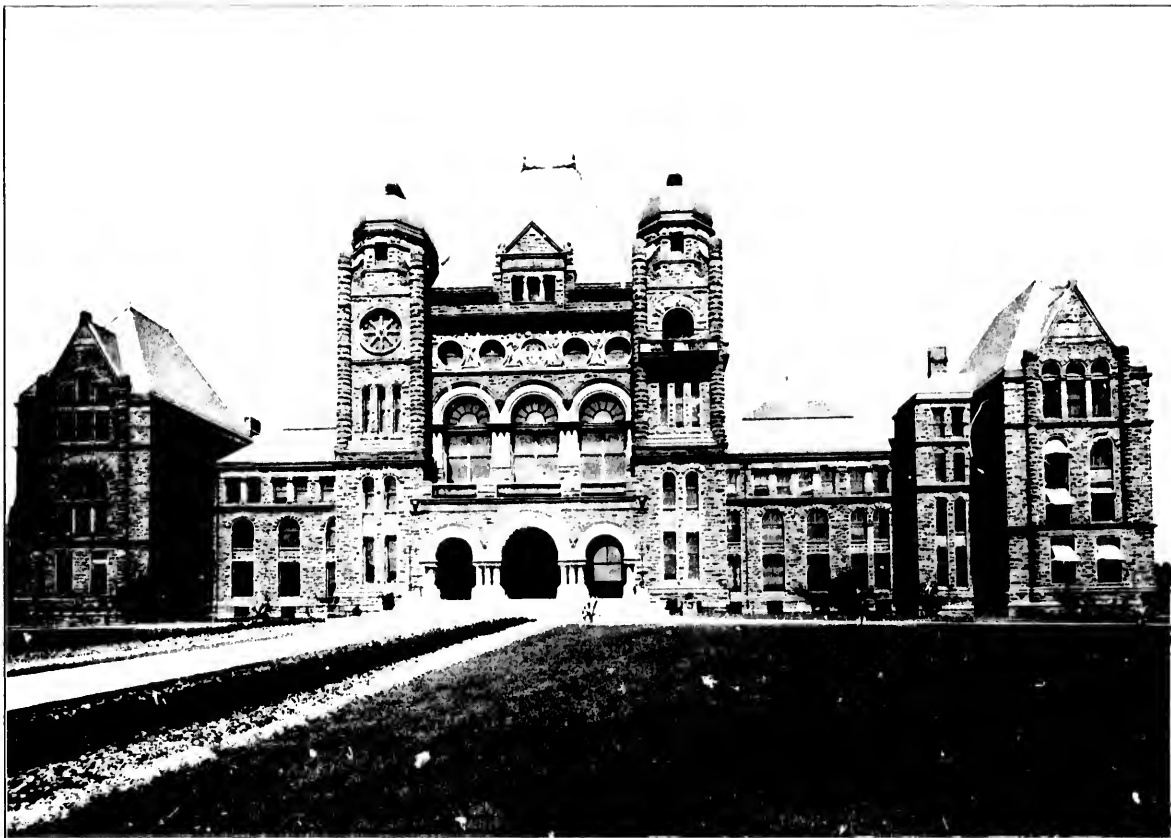
TORONTO
MCLEOD & SIMPSON, PUBLISHERS
1900

TABLE OF CONTENTS.

	PAGE		PAGE
Arlington Hotel	30	Post Office	9
Armories	23	Queen's Hotel	11
Asylum	35	Queen's Park	33
Board of Trade	13	Royal Canadian Yacht Club, City	21
Broadway Tabernacle	39	Royal Canadian Yacht Club, Island	21
City Hall	6	Rosedale Ravine Drive	18
Confederation Life	32	Rossin House	31
Crystal Palace	40	Sherbourne Street Methodist Church	27
Custom House	9	St. Andrew's Church	42
General Hospital	37	St. James' Cathedral	12
Government House	5	St. Michael's Cathedral	20
Hanlan's Hotel	22	Sick Children's Hospital, City	16
Harbord Street College	14	Sick Children's Hospital, Island	17
High Park Drive	33	Statue of Sir John A. Macdonald	15
Holy Blossom Synagogue	39	Statue of Hon. George Brown	15
Jarvis Street Baptist Church	27	Street View, King and Yonge	8
Knox College	25	Street View, Queen and Yonge	34
Lady of Lourdes	48	Street View, Jarvis Street	36
Loretto Abbey	45	Street View, St. George Street	44
Massey Hall	29	Temple Building	7
Metropolitan Church	43	Toronto University	24
McMaster University	41	Trinity College	38
Normal School	46	Union Station	10
Osgoode Hall	19	Upper Canada College	28
Parliament Buildings	4	Victoria College	47
Pavilion Horticultural Gardens	26	View of the City	3



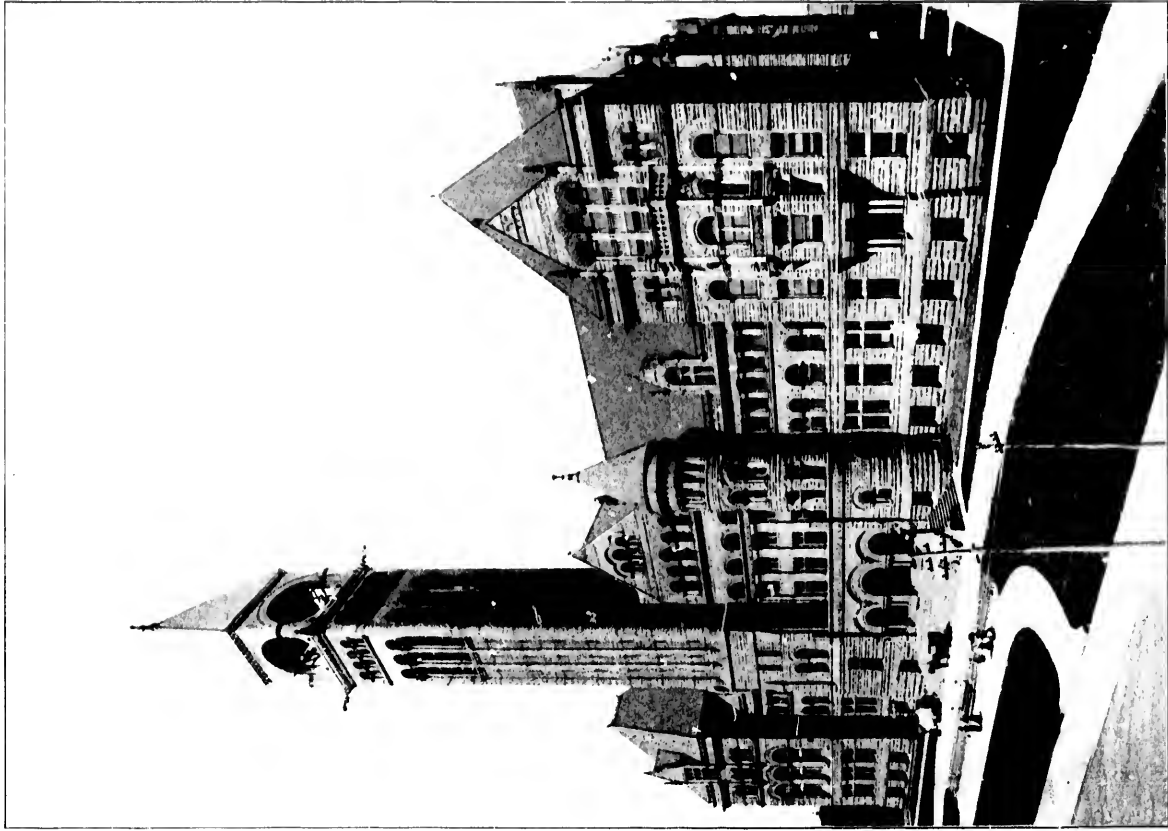
VIEW OF THE CITY FROM PARLIAMENT BUILDINGS—Queen's Park. City Hall Tower.



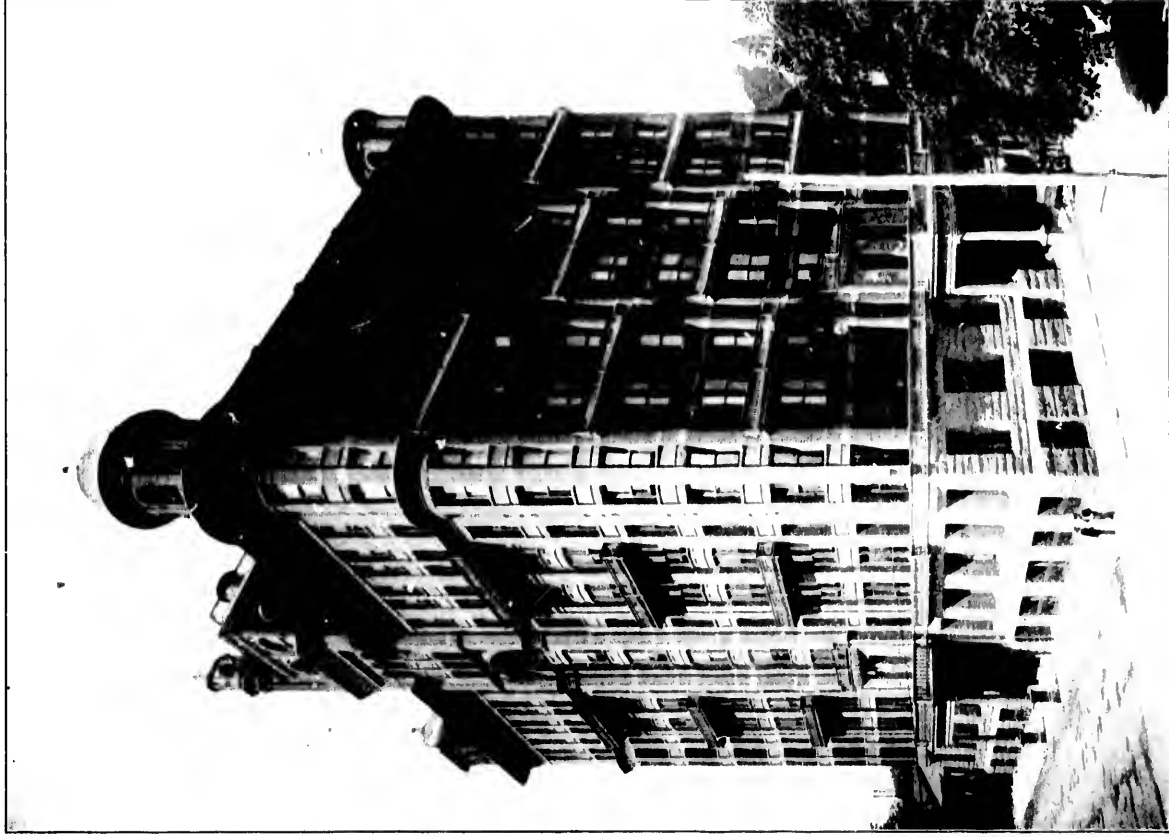
ONTARIO PARLIAMENT BUILDINGS—Queen's Park.



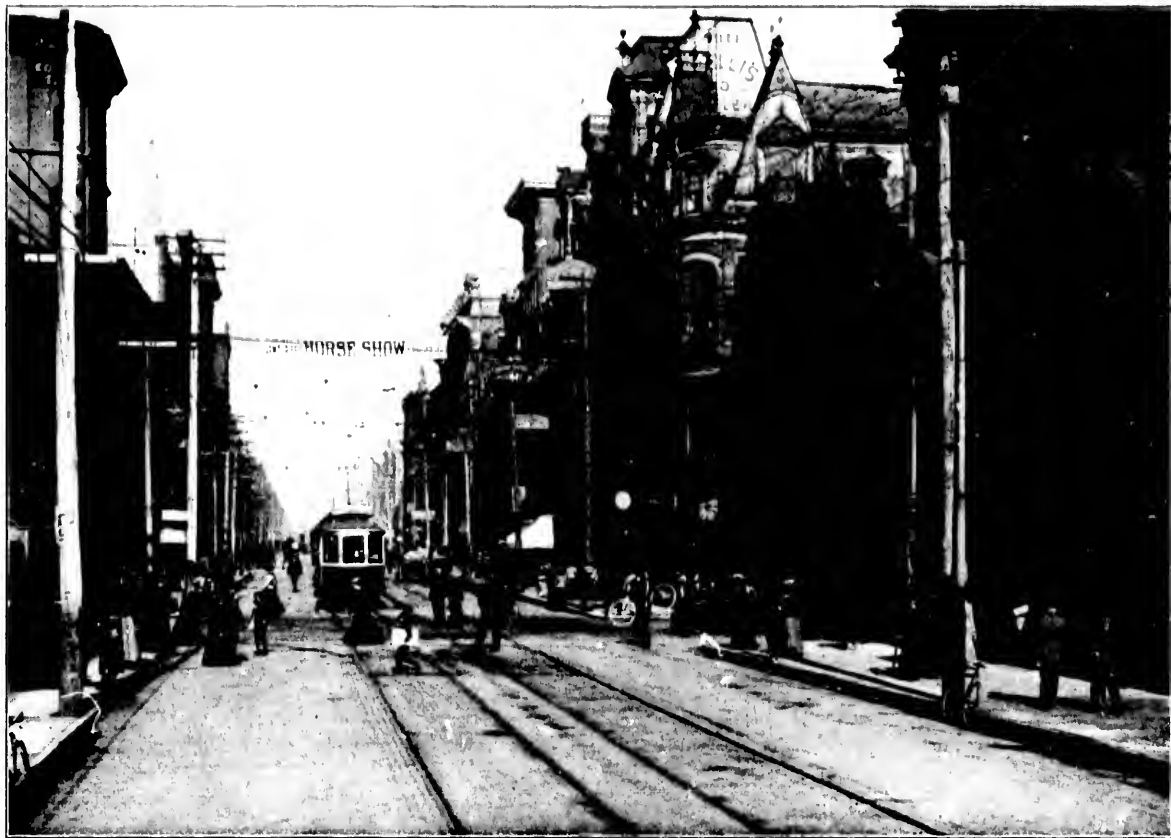
GOVERNMENT HOUSE — Simcoe Street.
Official Residence of the Lieutenant-Governor of Ontario.



CITY HALL — Queen Street, West.
Tower 280 feet high. Buildings cost about \$3,000,000.



THE TEMPLE BUILDING — Bay and Richmond Streets
Erected by the Independent Order of Foresters.



G. T. R. Ticket Office.

C. P. R. Ticket Office.

Dominion Bank.

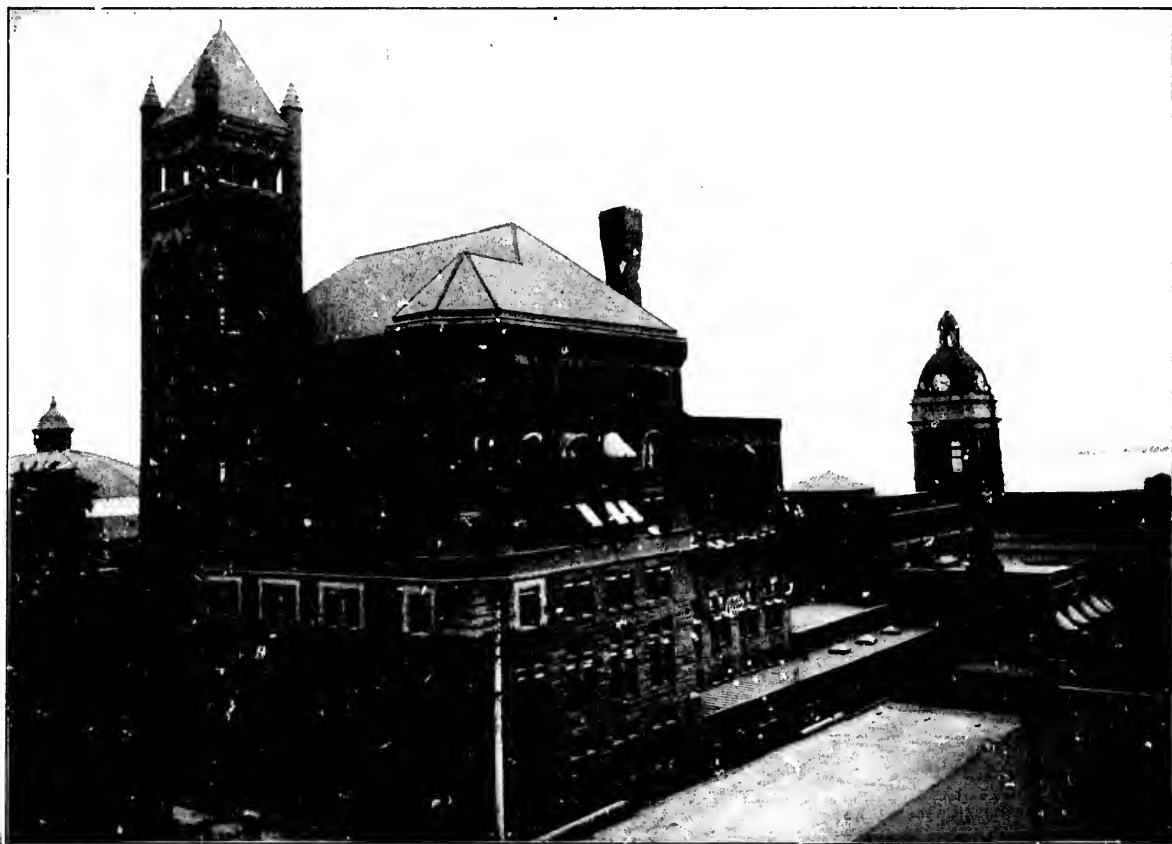
CORNER OF KING AND YONGE STREETS— Looking East.



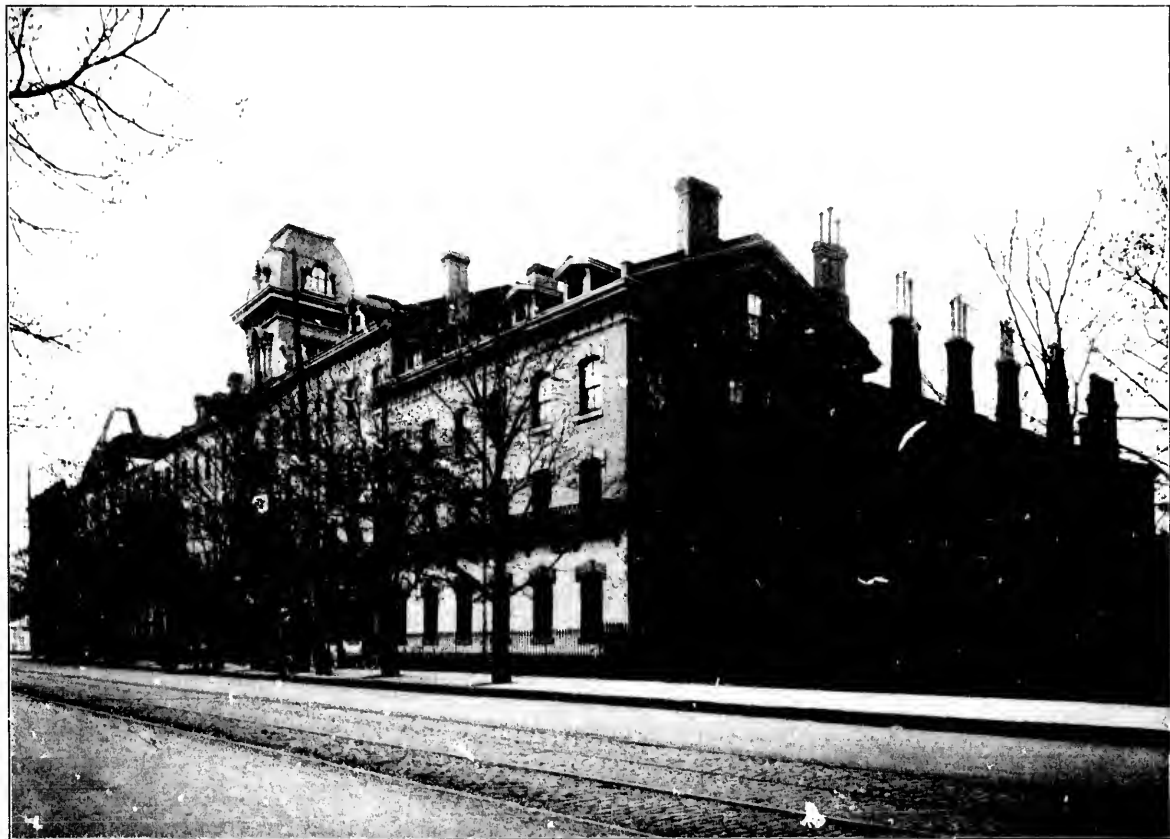
CUSTOM HOUSE — Corner of Front and Yonge Streets.



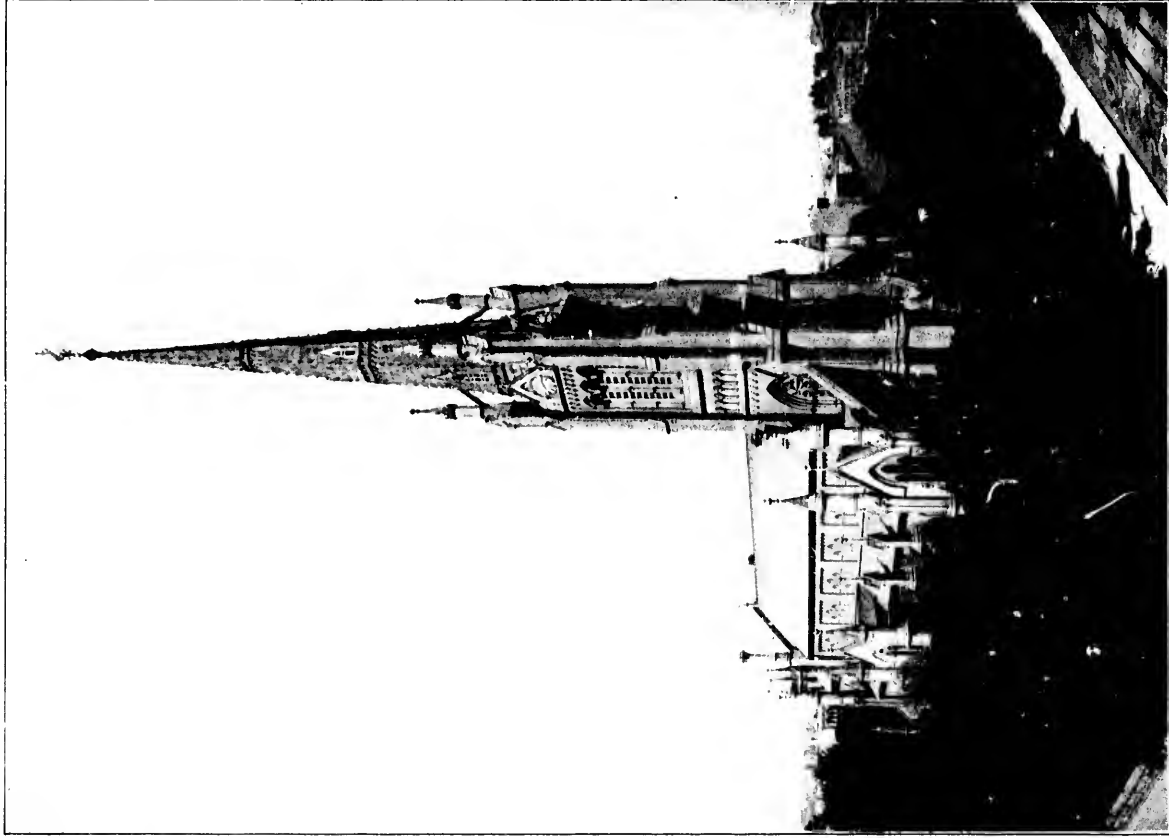
POST OFFICE — Adelaide Street, East.



UNION STATION—Depot of the Canadian Pacific and Grand Trunk Railways.

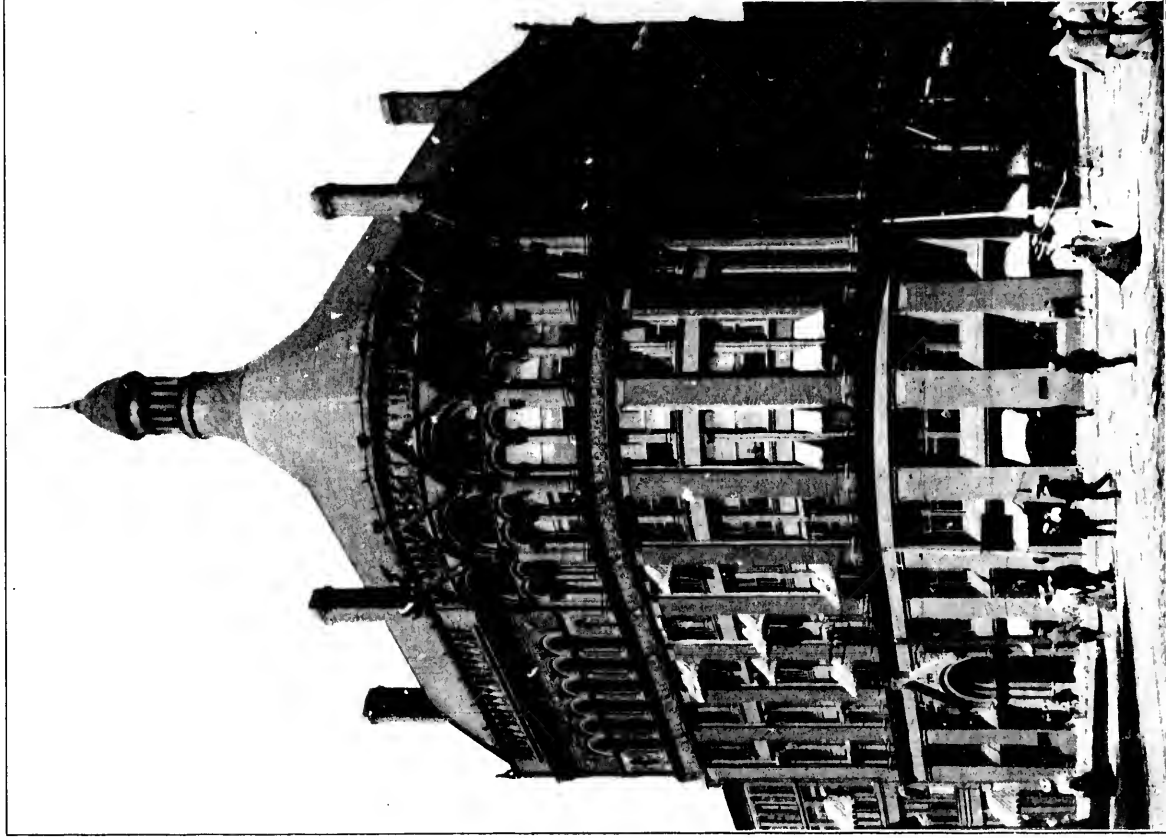


QUEEN'S HOTEL — Front Street, West.



ST. JAMES' CATHEDRAL — King Street, East.

Episcopal. Height of Spire 306 feet.



TORONTO BOARD OF TRADE BUILDING.
Corner of Front and Yonge Streets.



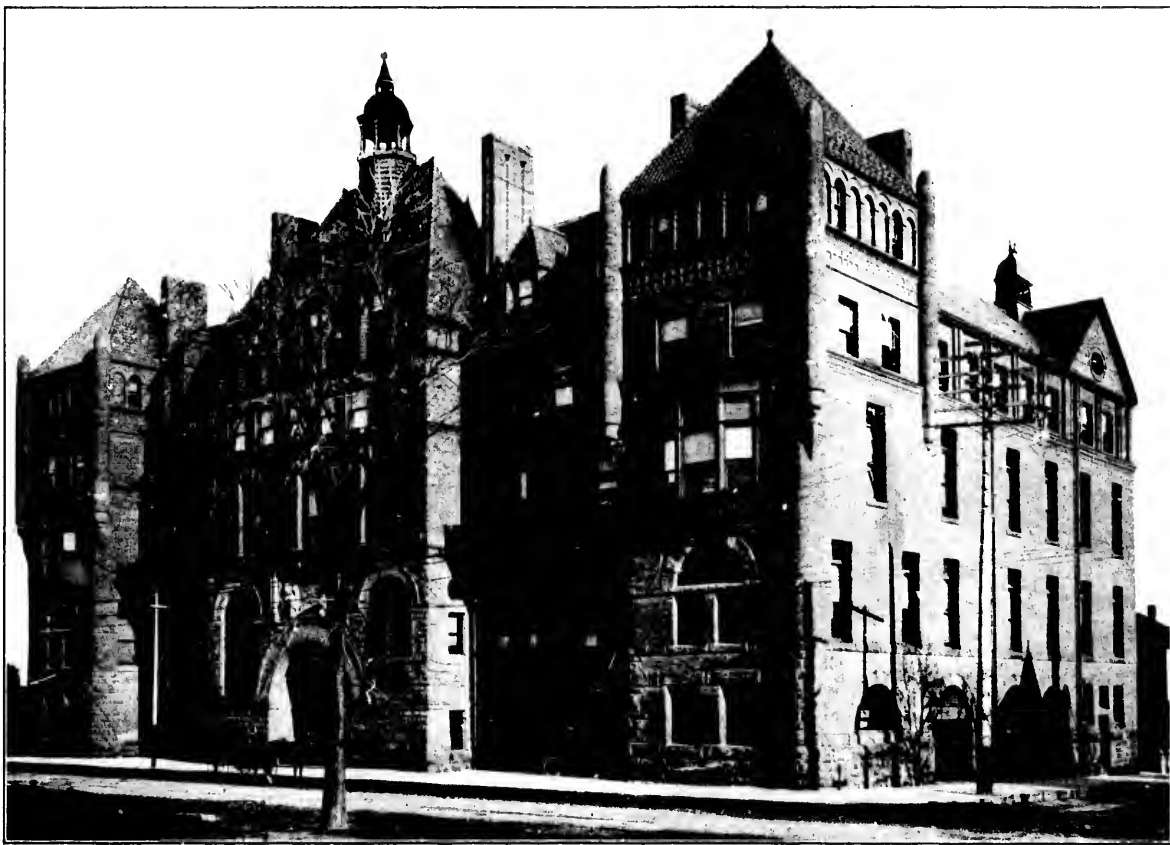
HARBORD STREET COLLEGIATE — Harbord Street.



STATUE OF SIR JOHN A. MACDONALD.
Queen's Park.



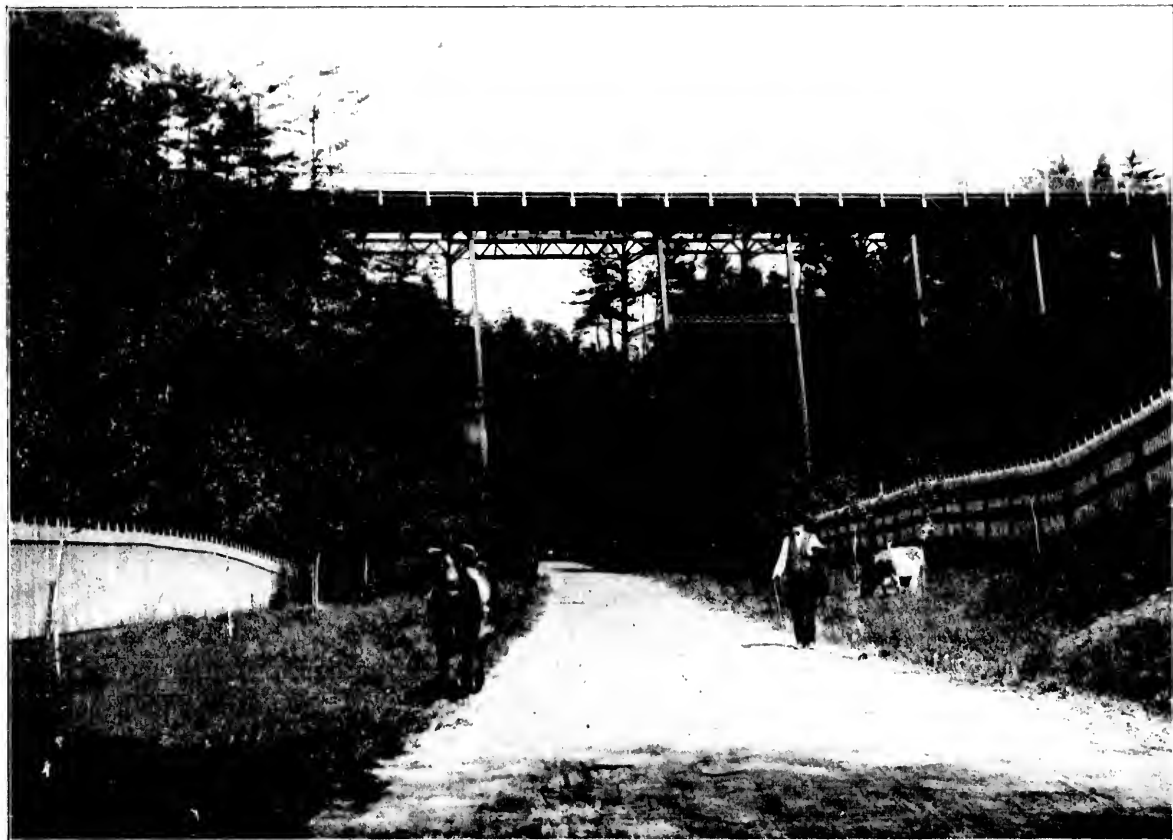
STATUE OF HON. GEORGE BROWN.
Queen's Park.



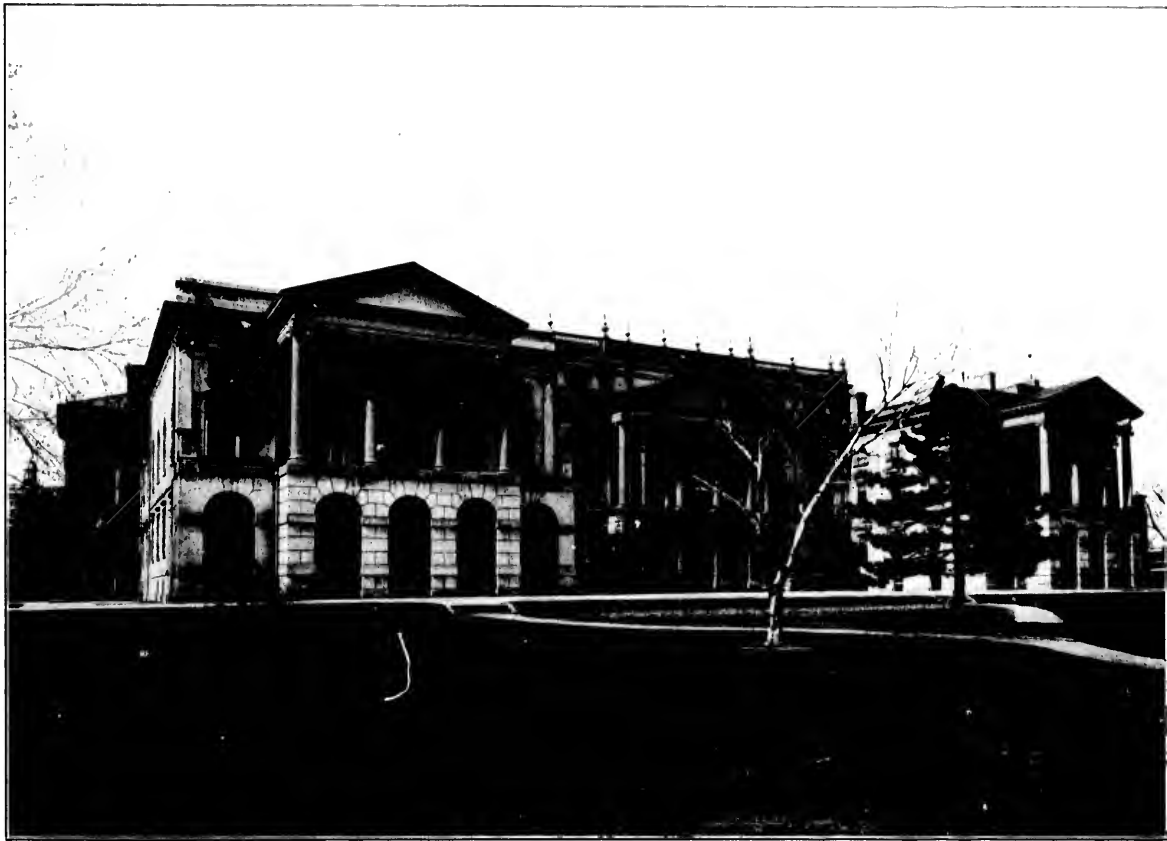
SICK CHILDREN'S HOSPITAL — College Street.



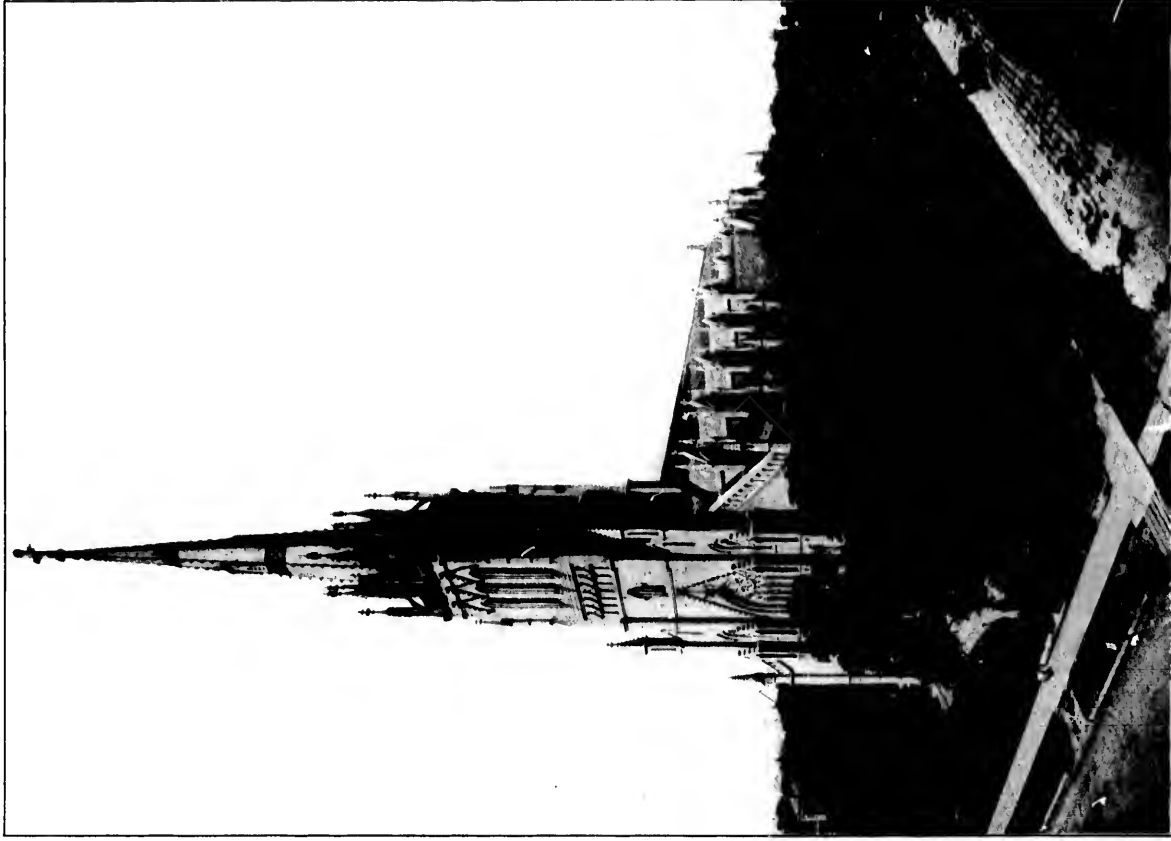
SICK CHILDREN'S HOSPITAL — Island Summer Home.



ROSEDALE RAVINE DRIVE.



OSGOODE HALL — Queen Street, West.
Ontario's Law Courts. Named after Chief Justice Osgoode.



ST. MICHAEL'S CATHEDRAL — Bond Street.
(Roman Catholic.)



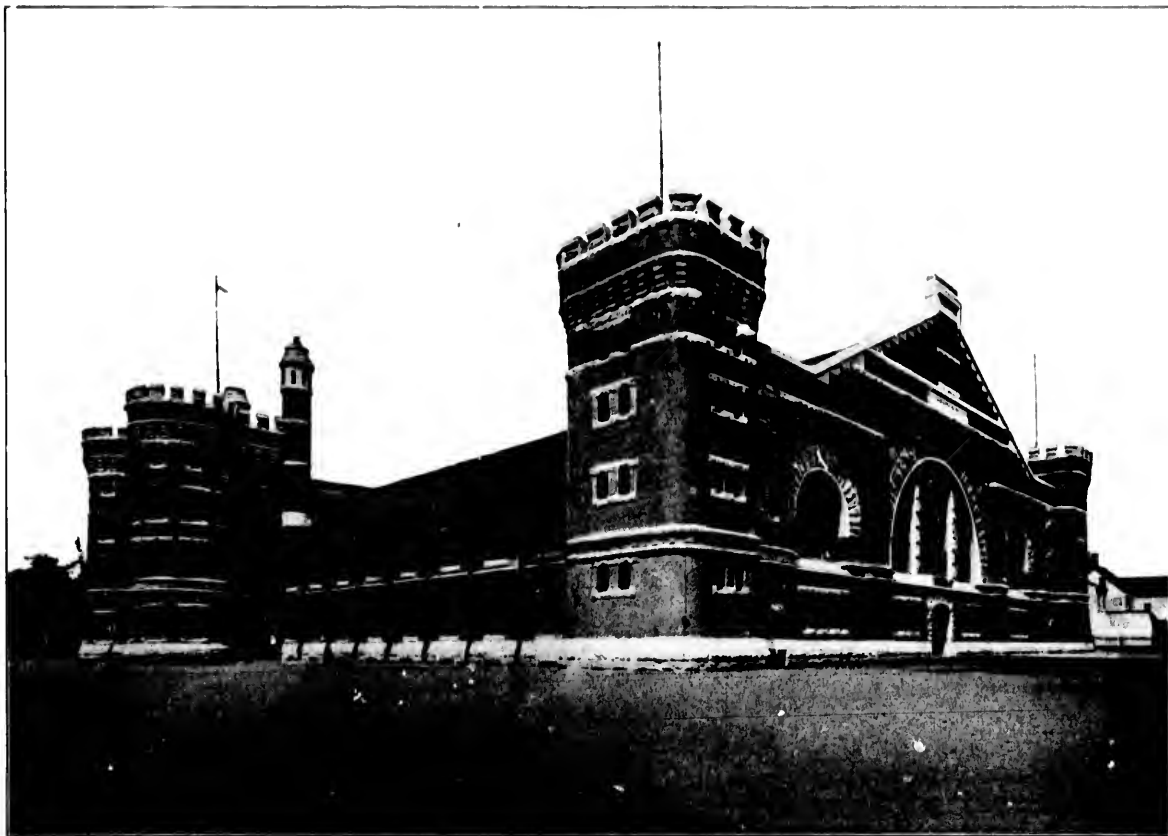
ROYAL CANADIAN YACHT CLUB — City.



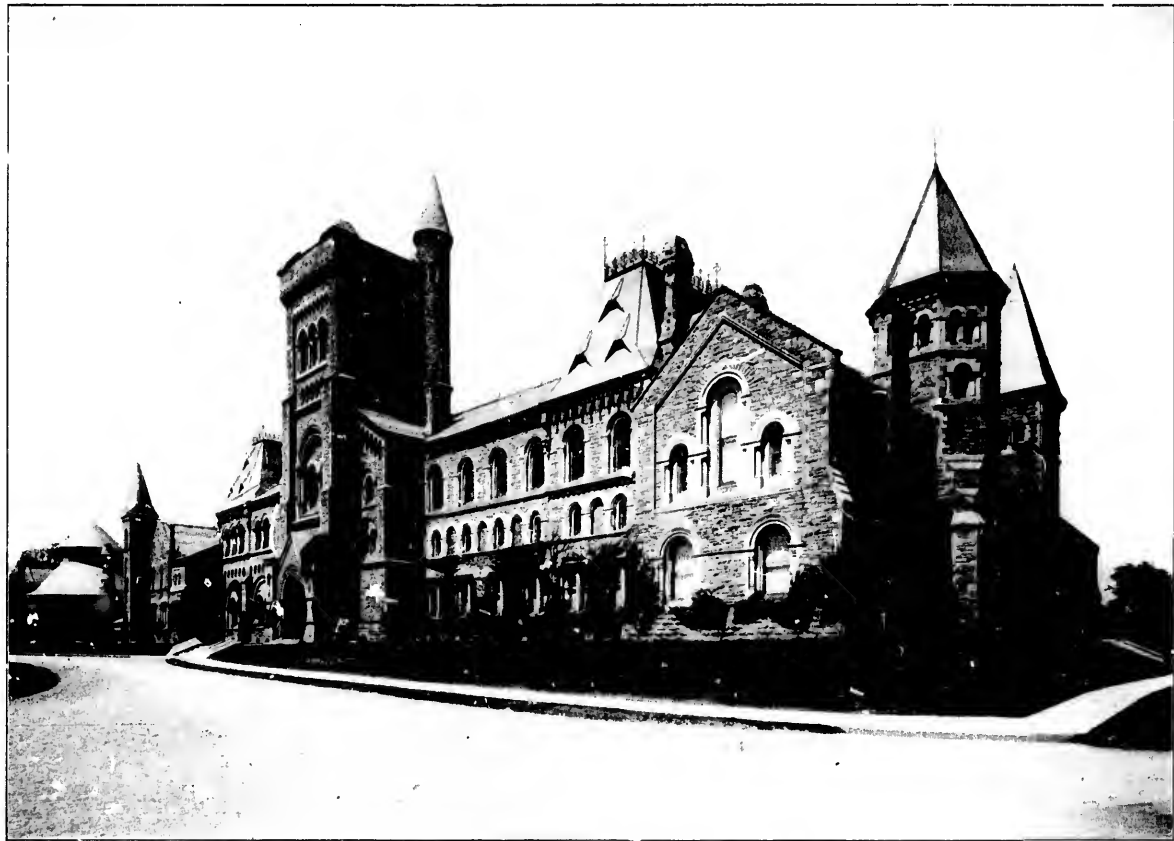
ROYAL CANADIAN YACHT CLUB — Island.



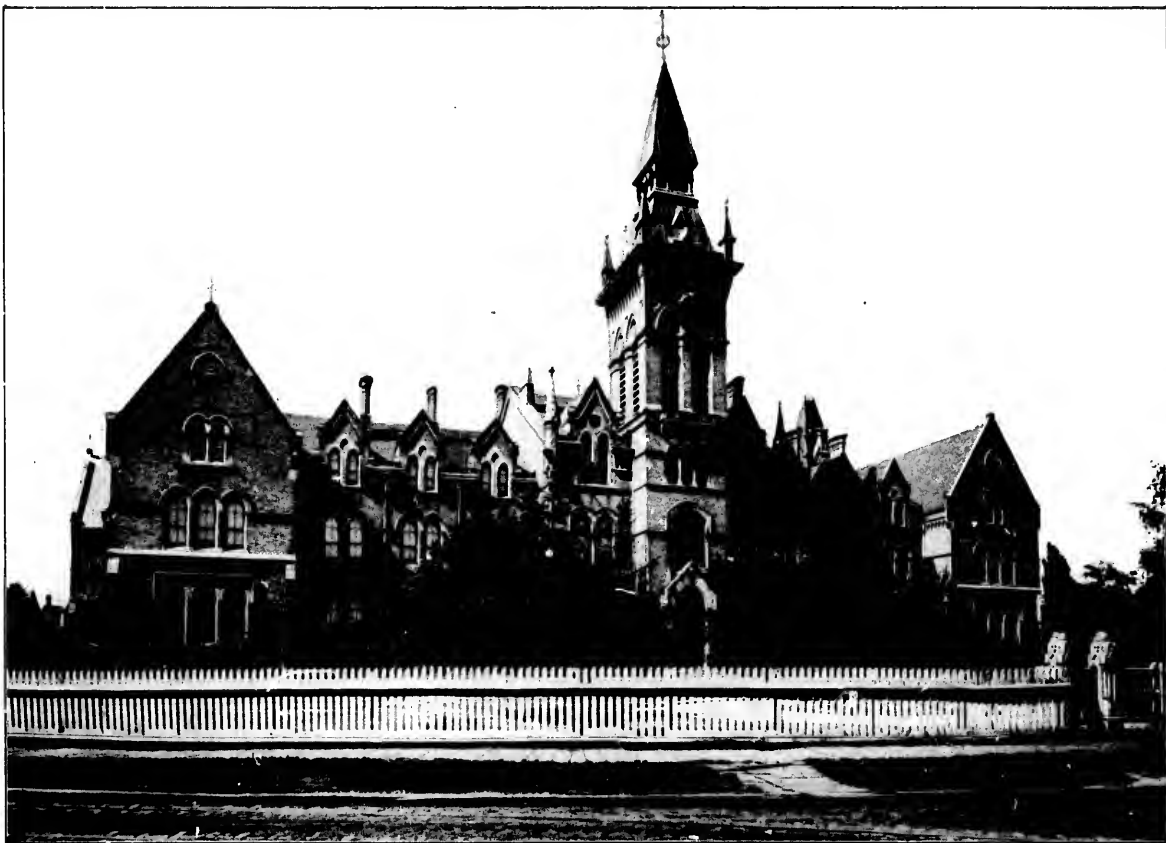
HANLAN'S HOTEL — On the Island.



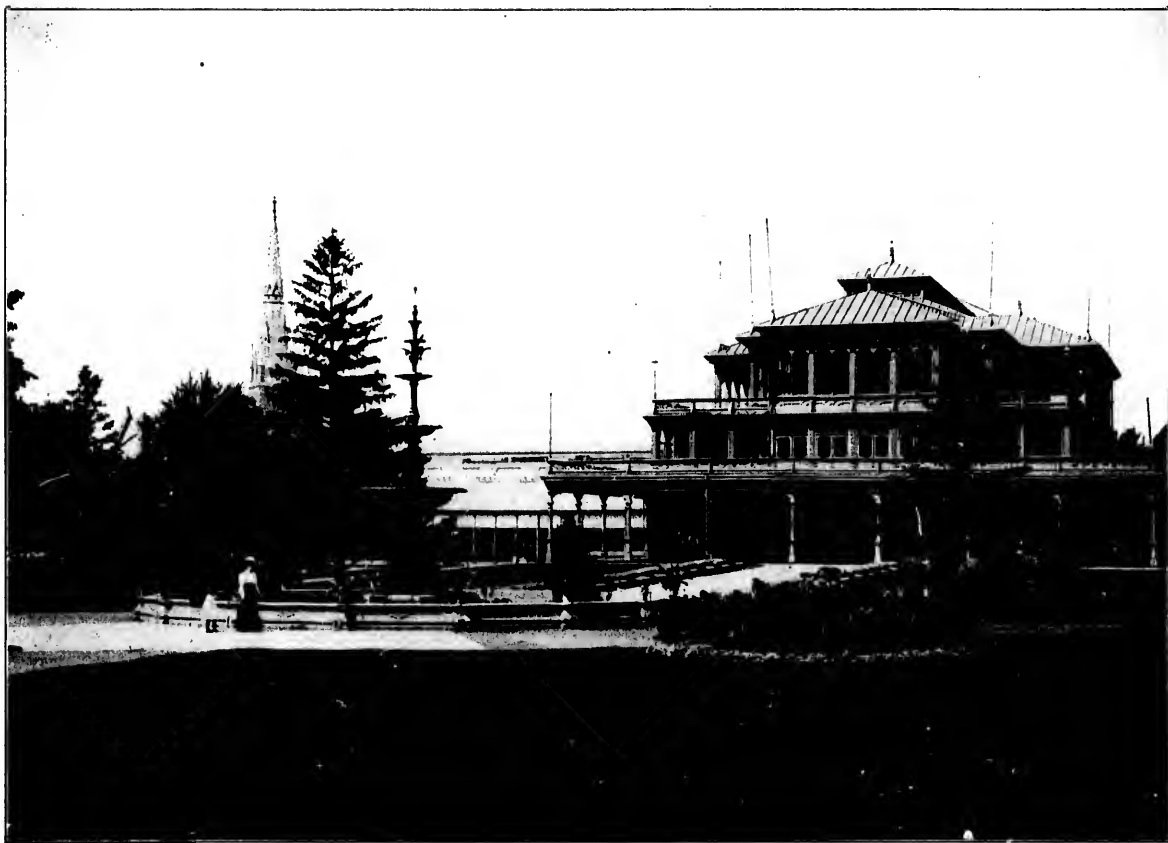
TORONTO MILITIA ARMORIES — University Avenue.



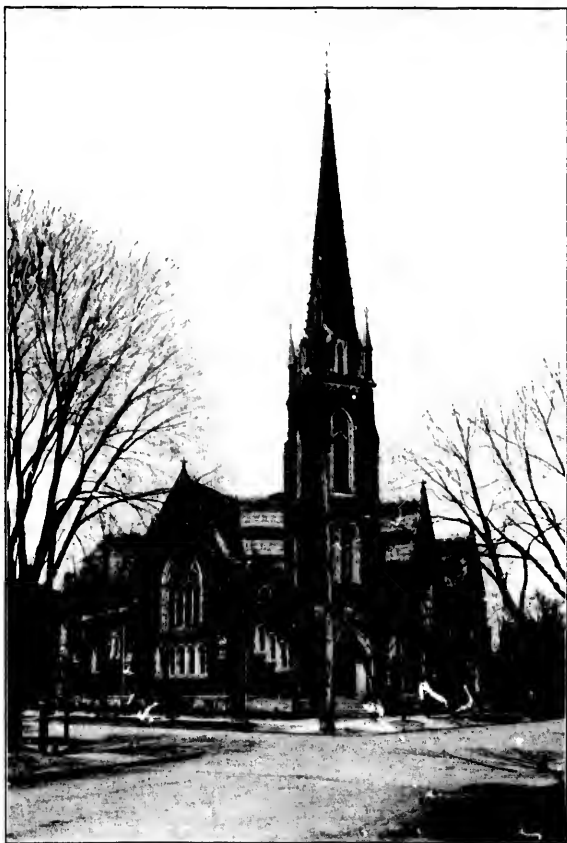
TORONTO UNIVERSITY—Queen's Park.



KNOX COLLEGE — Spadina Avenue.
(Presbyterian.)



PAVILION, HORTICULTURAL GARDENS.



JARVIS STREET BAPTIST CHURCH.



SHERBOURNE STREET METHODIST CHURCH.



UPPER CANADA COLLEGE— Avenue Road.

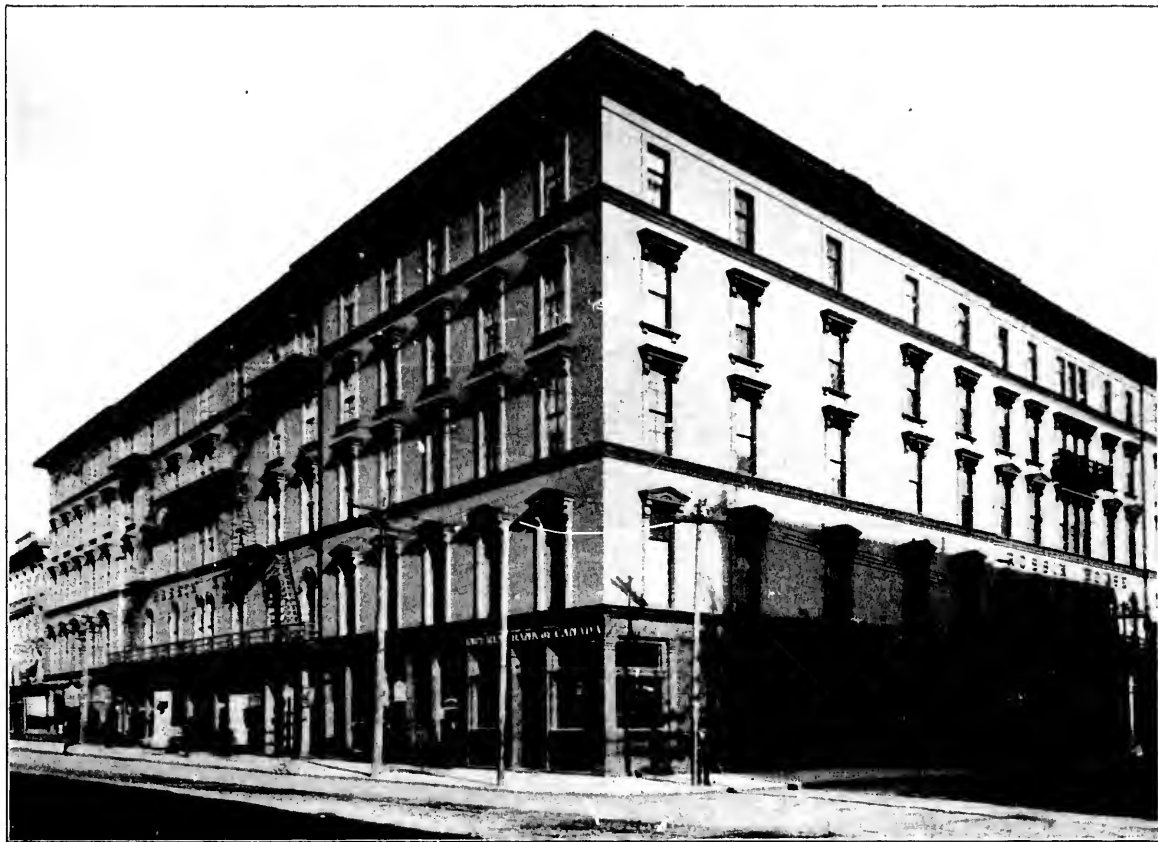
Founded 1829.



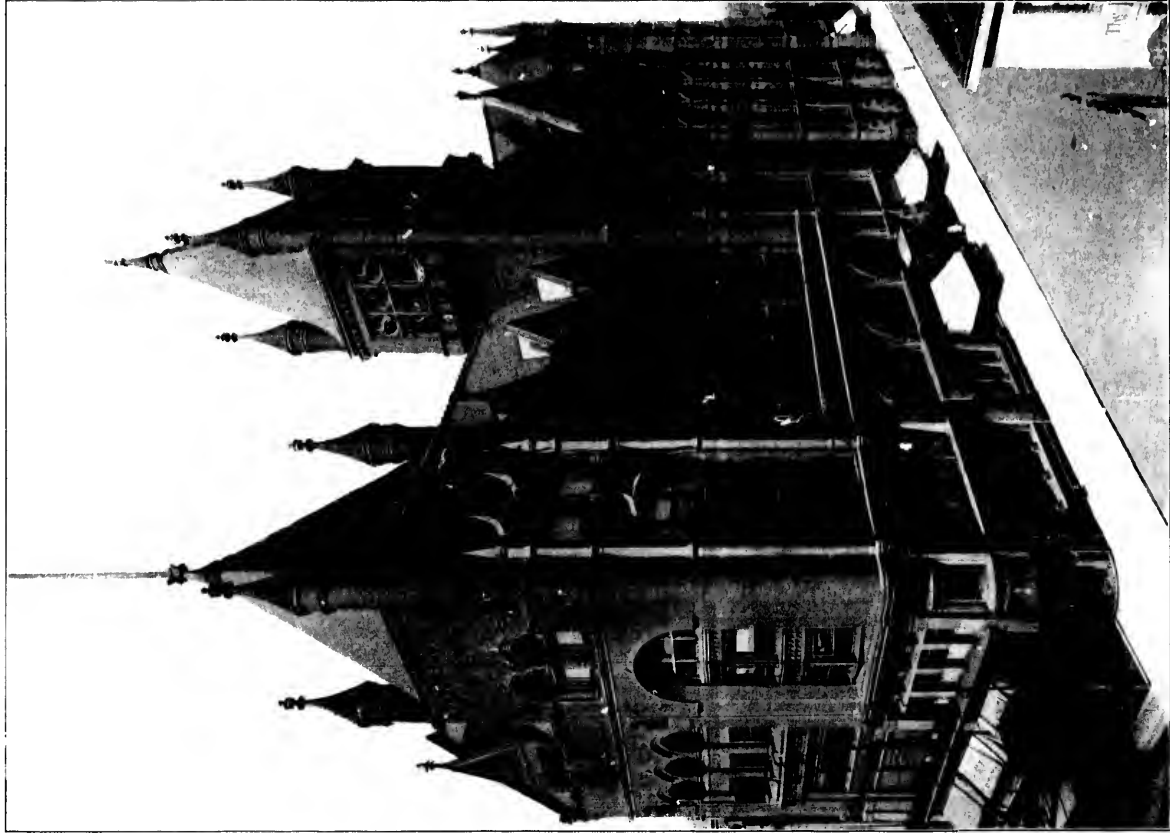
MASSEY MUSIC HALL — Shuter Street.
Presented to the City by the late H. A. Massey.



ARLINGTON HOTEL—Corner of King and John Streets.



ROSSIN HOUSE — Corner of King and York Streets.



CONFEDERATION LIFE ASSOCIATION BUILDING,
Corner of Yonge and Richmond Streets.

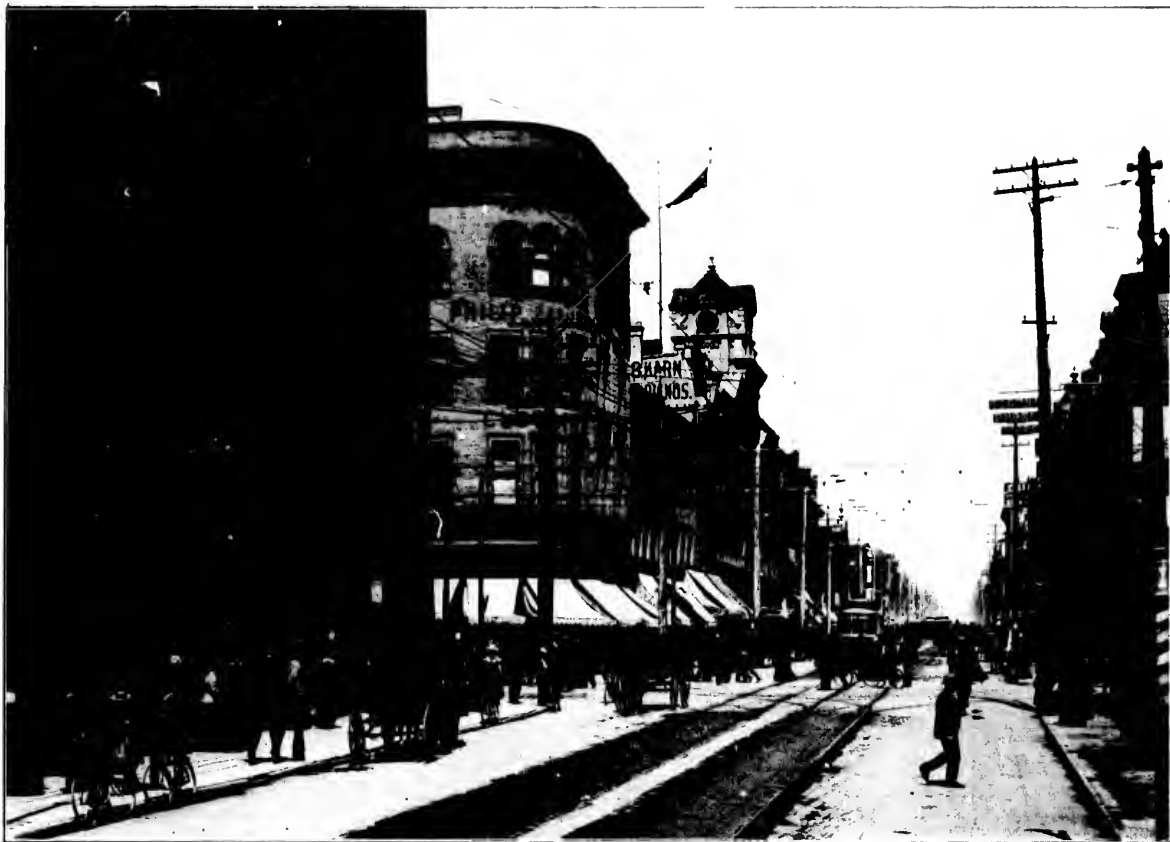


HIGH PARK DRIVE.



QUEEN'S PARK.

Parliament Building.



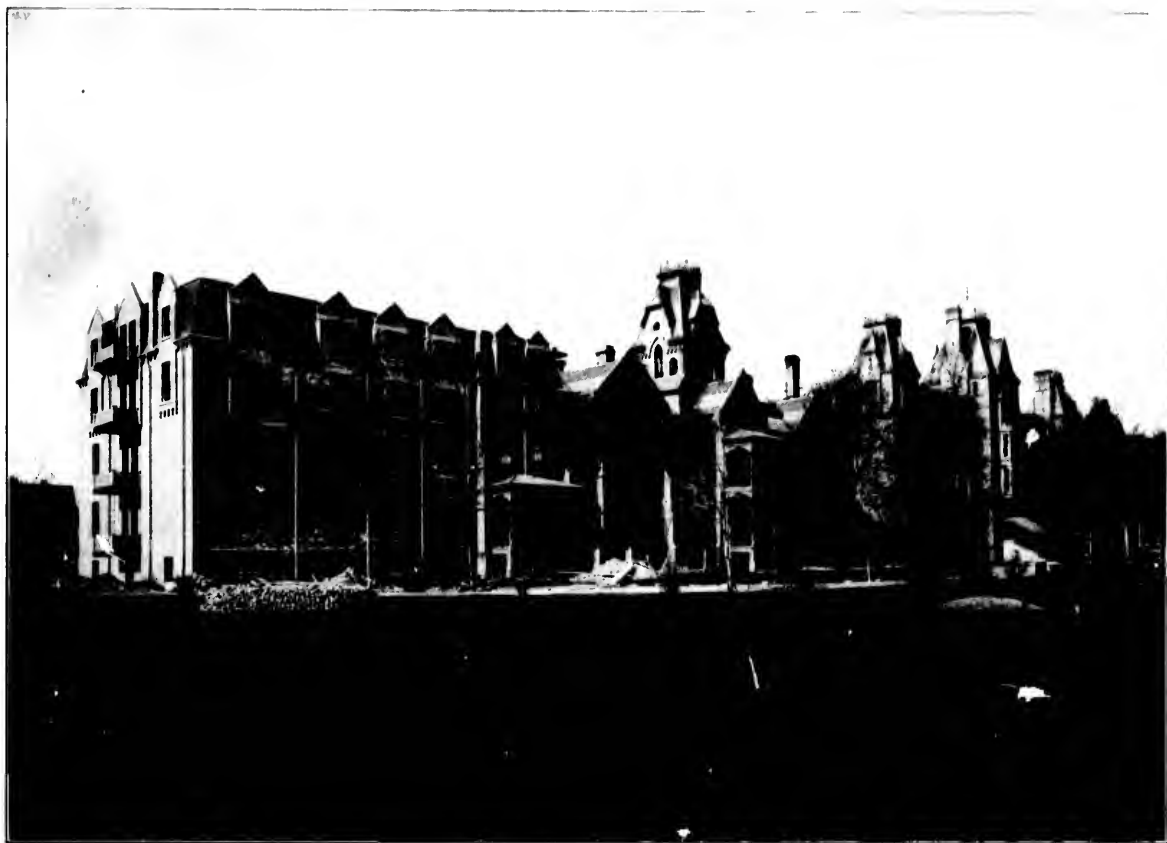
CORNER OF QUEEN AND YONGE STREETS—Looking North.



PROVINCIAL ASYLUM—Queen Street, West.



JARVIS STREET — Residential Section.



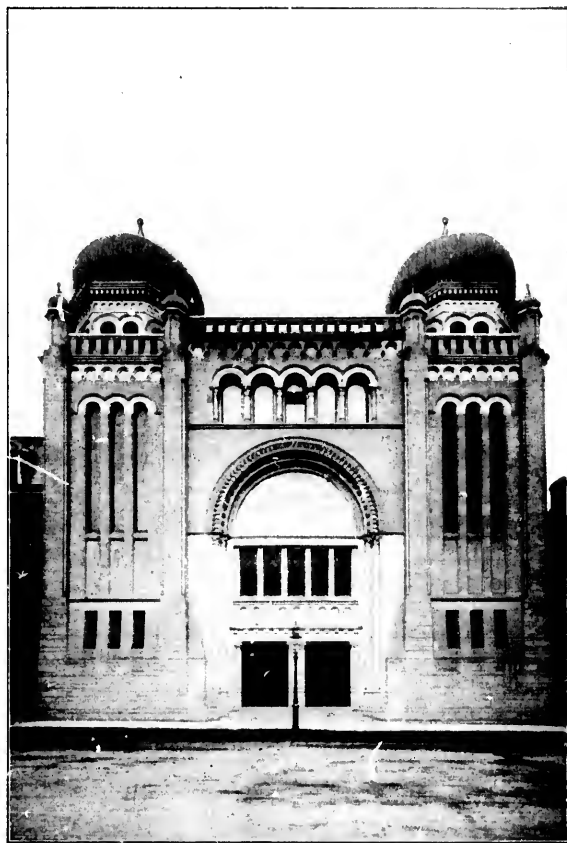
TORONTO GENERAL HOSPITAL — Gerrard Street, East.



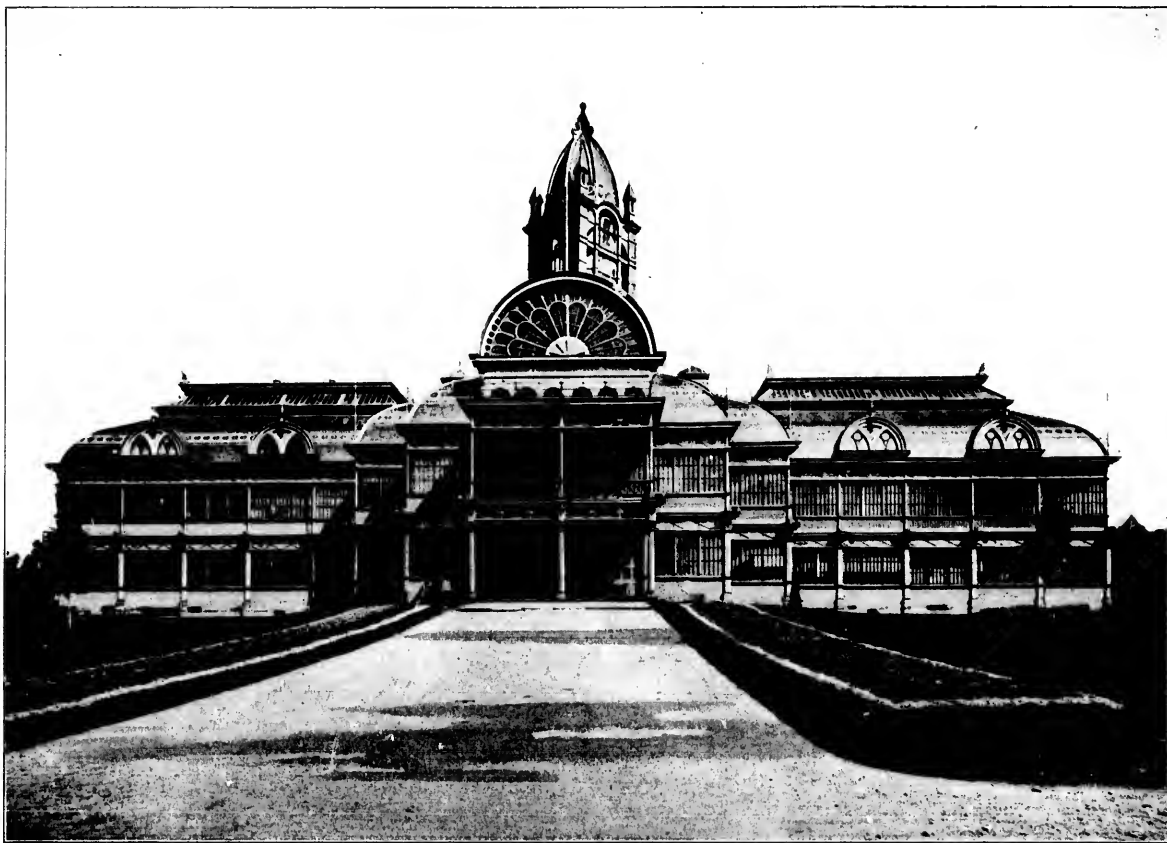
TRINITY UNIVERSITY — Queen Street, West.
(Episcopal.)



BRC ADWAY TABERNACLE — Spadina Avenue.
(Methodist.)



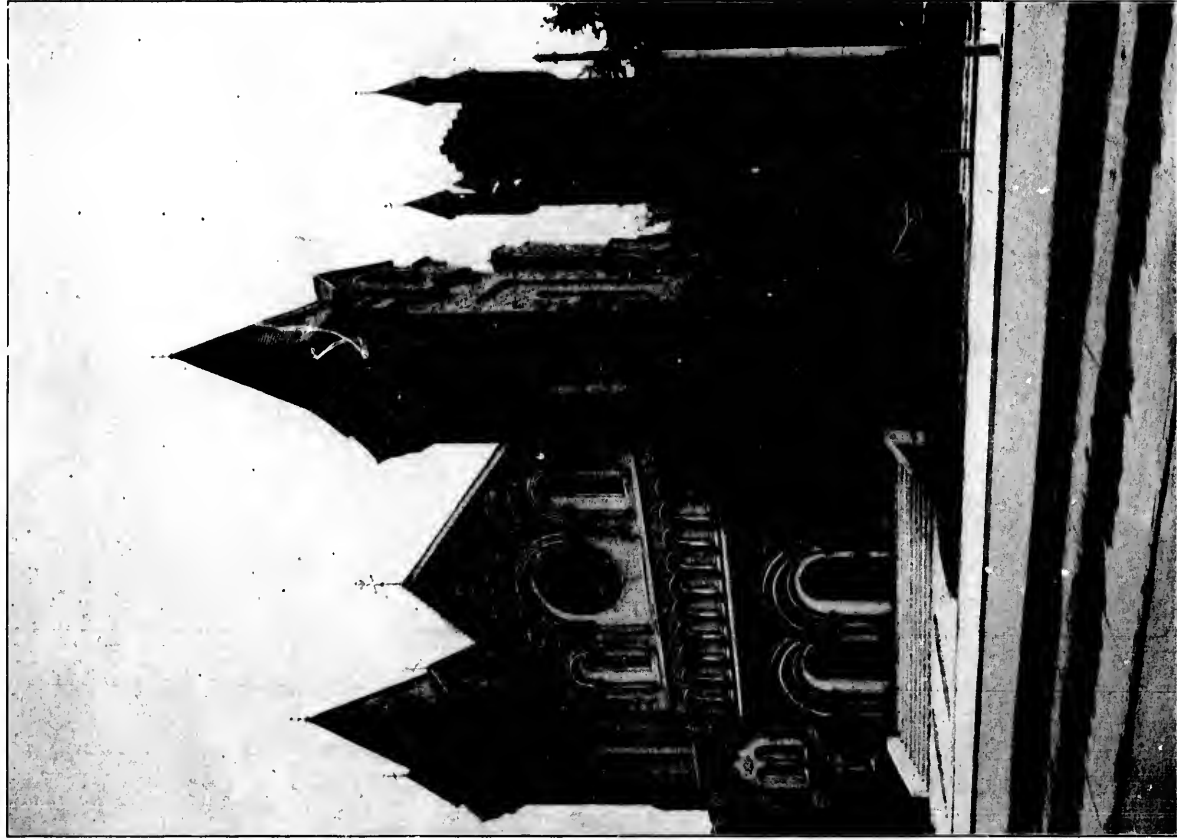
"HOLY BLOSSOM" SYNAGOGUE — Bond Street.



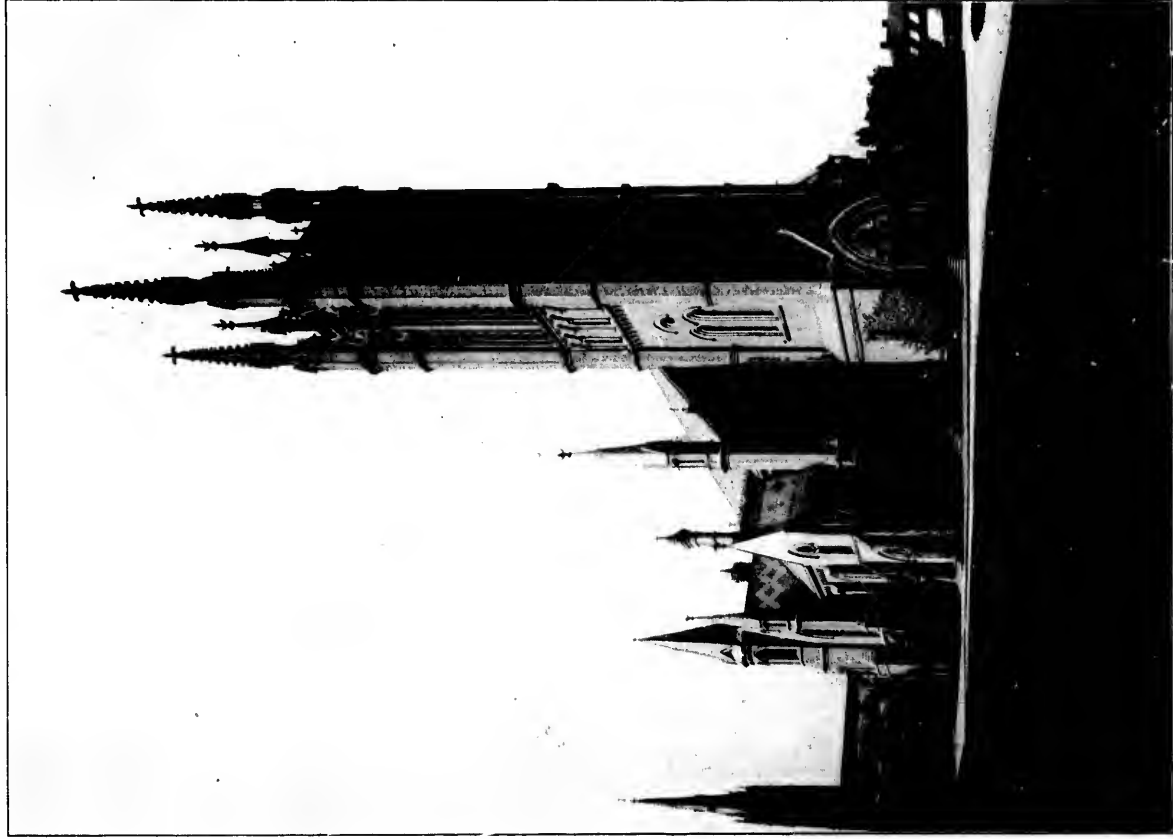
CRYSTAL PALACE—Exhibition Grounds.



McMASTER UNIVERSITY — Bloor Street, West.
(Baptist.)



ST. ANDREW'S CHURCH — King Street, West.
(Presbyterian.)



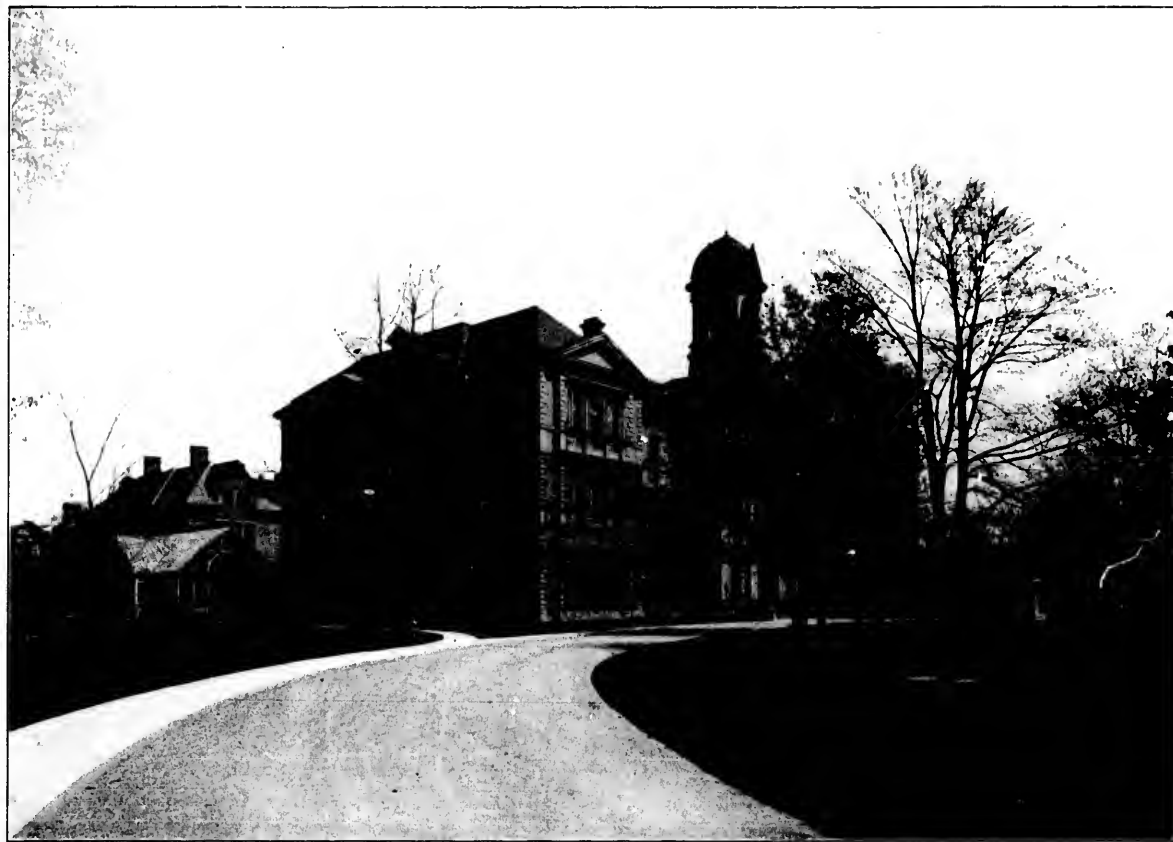
METROPOLITAN CHURCH — Queen Street, East.
(Methodist.)



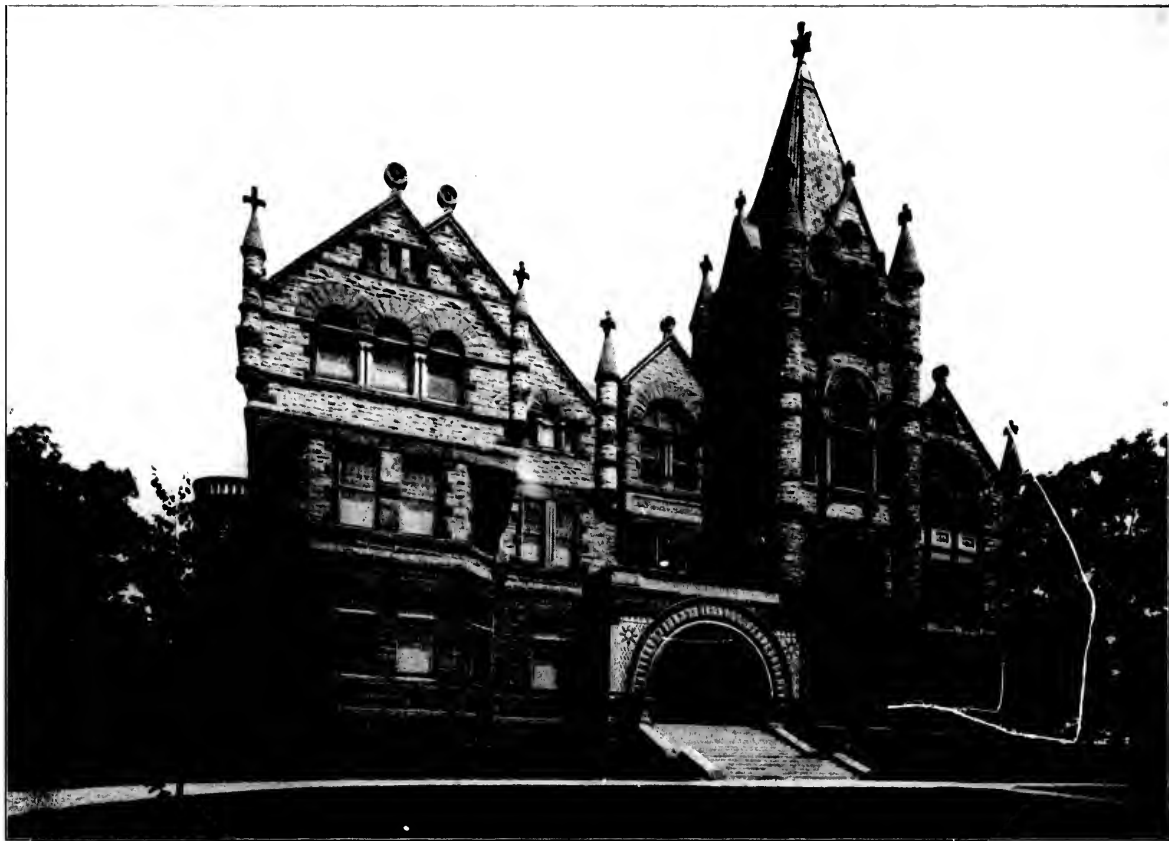
ST. GEORGE STREET—Residential Section.



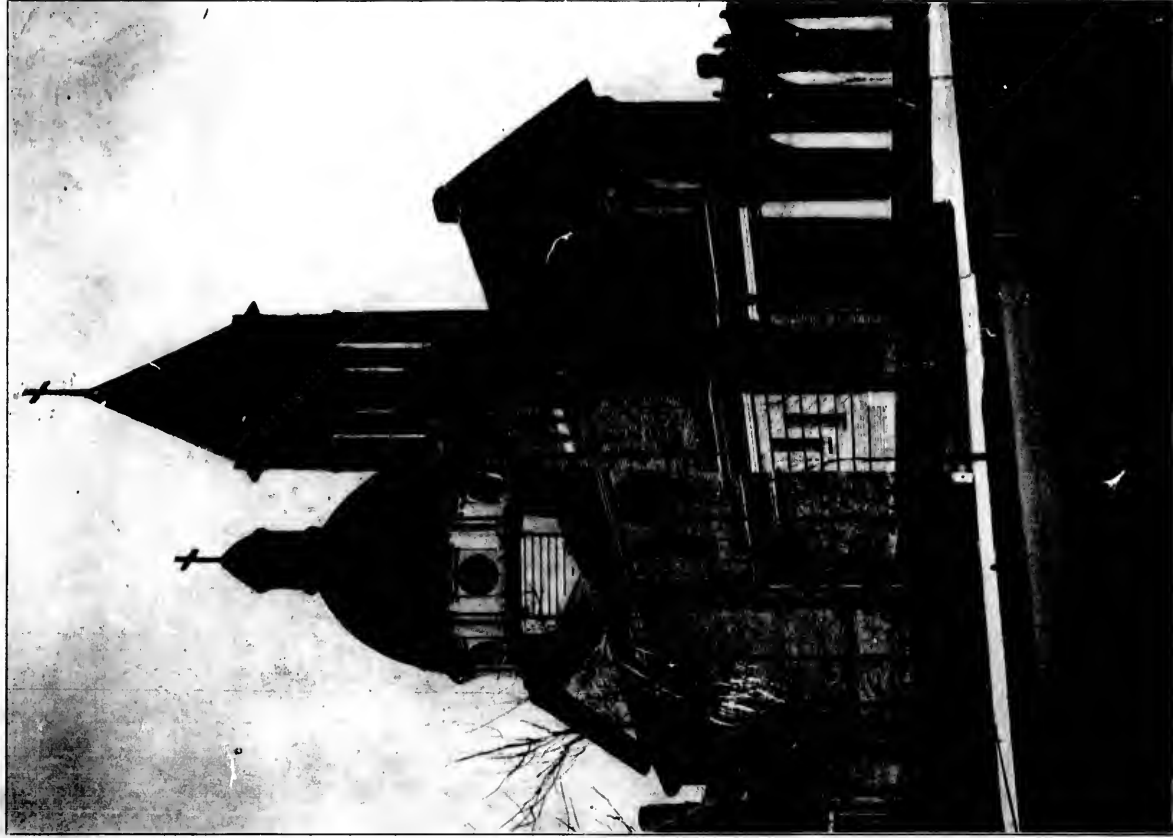
LORETTO ABBEY — Wellington Street, West.



NORMAL SCHOOL — St. James Square.
Headquarters of the Provincial Educational Department.



VICTORIA COLLEGE — Queen's Park.
(Methodist)



CHURCH OF OUR LADY OF LOURDES — Sherbourne Street.

(Roman Catholic.)

(Roman Catholic.)

