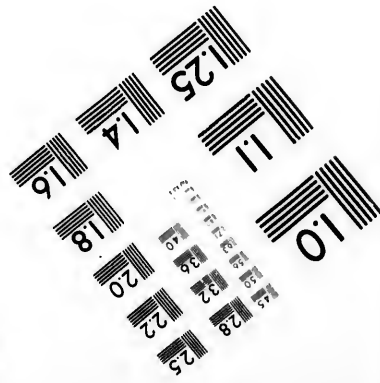
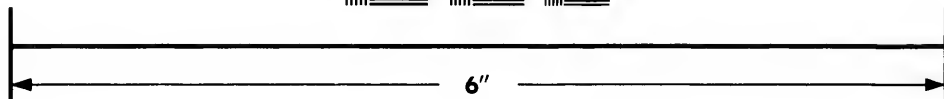
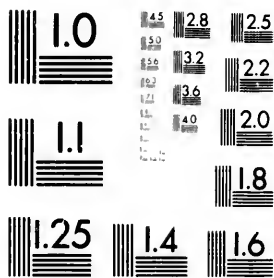
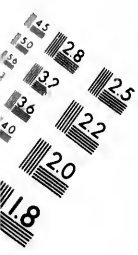


**IMAGE EVALUATION  
TEST TARGET (MT-3)**



**Photographic  
Sciences  
Corporation**

23 WEST MAIN STREET  
WEBSTER, N.Y. 14580  
(716) 872-4503



**CIHM/ICMH  
Microfiche  
Series.**

**CIHM/ICMH  
Collection de  
microfiches.**



**Canadian Institute for Historical Microreproductions / Institut canadien de microreproductions historiques**



**© 1981**

Technical and Bibliographic Notes/Notes techniques et bibliographiques

The Institute has attempted to obtain the best original copy available for filming. Features of this copy which may be bibliographically unique, which may alter any of the images in the reproduction, or which may significantly change the usual method of filming, are checked below.

L'Institut a microfilmé le meilleur exemplaire qu'il lui a été possible de se procurer. Les détails de cet exemplaire qui sont peut-être uniques du point de vue bibliographique, qui peuvent modifier une image reproduite, ou qui peuvent exiger une modification dans la méthode normale de filmage sont indiqués ci-dessous.

- Coloured covers/  
Couverture de couleur
- Covers damaged/  
Couverture endommagée
- Covers restored and/or laminated/  
Couverture restaurée et/ou pelliculée
- Cover title missing/  
Le titre de couverture manque
- Coloured maps/  
Cartes géographiques en couleur
- Coloured ink (i.e. other than blue or black)/  
Encre de couleur (i.e. autre que bleue ou noire)
- Coloured plates and/or illustrations/  
Planches et/ou illustrations en couleur
- Bound with other material/  
Relié avec d'autres documents
- Tight binding may cause shadows or distortion along interior margin/  
La reliure serrée peut causer de l'ombre ou de la distorsion le long de la marge intérieure
- Blank leaves added during restoration may appear within the text. Whenever possible, these have been omitted from filming/  
Il se peut que certaines pages blanches ajoutées lors d'une restauration apparaissent dans le texte, mais, lorsque cela était possible, ces pages n'ont pas été filmées.
- Additional comments:/  
Commentaires supplémentaires:

- Coloured pages/  
Pages de couleur
- Pages damaged/  
Pages endommagées
- Pages restored and/or laminated/  
Pages restaurées et/ou pelliculées
- Pages discoloured, stained or foxed/  
Pages décolorées, tachetées ou piquées
- Pages detached/  
Pages détachées
- Showthrough/  
Transparence
- Quality of print varies/  
Qualité inégale de l'impression
- Includes supplementary material/  
Comprend du matériel supplémentaire
- Only edition available/  
Seule édition disponible
- Pages wholly or partially obscured by errata slips, tissues, etc., have been refilmed to ensure the best possible image/  
Les pages totalement ou partiellement obscurcies par un feuillet d'errata, une pelure, etc., ont été filmées à nouveau de façon à obtenir la meilleure image possible.

This item is filmed at the reduction ratio checked below/  
Ce document est filmé au taux de réduction indiqué ci-dessous.

10X	14X	18X	22X	26X	30X
<input type="checkbox"/>	<input type="checkbox"/>	<input type="checkbox"/>	<input checked="" type="checkbox"/>	<input type="checkbox"/>	<input type="checkbox"/>
12X	16X	20X	24X	28X	32X

The copy filmed here has been reproduced thanks to the generosity of:

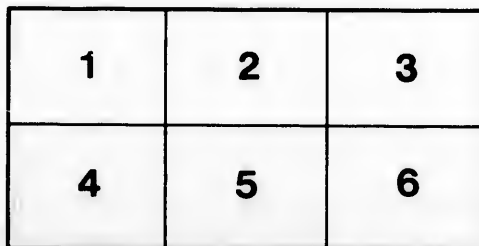
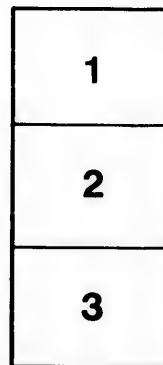
Library of the Public  
Archives of Canada

The images appearing here are the best quality possible considering the condition and legibility of the original copy and in keeping with the filming contract specifications.

Original copies in printed paper covers are filmed beginning with the front cover and ending on the last page with a printed or illustrated impression, or the back cover when appropriate. All other original copies are filmed beginning on the first page with a printed or illustrated impression, and ending on the last page with a printed or illustrated impression.

The last recorded frame on each microfiche shall contain the symbol  $\rightarrow$  (meaning "CONTINUED"), or the symbol  $\nabla$  (meaning "END"), whichever applies.

Maps, plates, charts, etc., may be filmed at different reduction ratios. Those too large to be entirely included in one exposure are filmed beginning in the upper left hand corner, left to right and top to bottom, as many frames as required. The following diagrams illustrate the method:



L'exemplaire filmé fut reproduit grâce à la générosité de:

La bibliothèque des Archives  
publiques du Canada

Les images suivantes ont été reproduites avec le plus grand soin, compte tenu de la condition et de la netteté de l'exemplaire filmé, et en conformité avec les conditions du contrat de filmage.

Les exemplaires originaux dont la couverture en papier est imprimée sont filmés en commençant par le premier plat et en terminant soit par la dernière page qui comporte une empreinte d'impression ou d'illustration, soit par le second plat, selon le cas. Tous les autres exemplaires originaux sont filmés en commençant par la première page qui comporte une empreinte d'impression ou d'illustration et en terminant par la dernière page qui comporte une telle empreinte.

Un des symboles suivants apparaîtra sur la dernière image de chaque microfiche, selon le cas: le symbole  $\rightarrow$  signifie "A SUIVRE", le symbole  $\nabla$  signifie "FIN".

Les cartes, planches, tableaux, etc., peuvent être filmés à des taux de réduction différents. Lorsque le document est trop grand pour être reproduit en un seul cliché, il est filmé à partir de l'angle supérieur gauche, de gauche à droite, et de haut en bas, en prenant le nombre d'images nécessaire. Les diagrammes suivants illustrent la méthode.

rrata  
o

elure,  
n à

No.

T

tion

In I  
In I  
In I  
In M

9

A SERIES OF

# STRIKING

# COMPARISONS AND CONTRASTS

PROVING THE ECONOMY, PRUDENCE AND  
PROGRESSIVENESS OF

# THE MOWAT GOVERNMENT.

**A Comparison as to Cost of Education.**

The cost per pupil for a common school education in the United States	\$17 22
Ohio.....	15 98
Massachusetts.....	22 60
Michigan.....	14 70
New York.....	16 80
In England and Wales, 1892, board schools.....	11 76
"                    "                    voluntary schools.....	9 34
<b>In Ontario, 1891.....</b>	<b>8 40</b>
As to cities, the cost per pupil in Boston is.....	27 86
"                    "                    Minneapolis is.....	22 49
"                    "                    Chicago is.....	19 95
"                    "                    New York is.....	17 89
<b>Average for cities in Ontario.....</b>	<b>13 57</b>

Out of every \$6 spent by the Government, \$1 goes for educational purposes.

**A Comparison as to Liquor Licenses.**

In 1874-5 there was issued in Ontario 6,185 licenses, or one to each 278 of population.  
In 1892-3 there was issued 3,369 licenses, or one to each 633 of population, a reduction of 2,816.

In contrast—

In Illinois one to each 183 of population.	In Michigan one to each 239 of population.
In Indiana " 247 "	In Minnesota " 301 "
In Iowa " 289 "	In New York " 134 "
In Massachusetts " 386 "	In Ohio " 203 "

**Ontario, one to each 633 of population.**  
In Montreal there is one license to each 349 of population.  
In Toronto there is one license to each 1,208 of population.

### A Comparison as to Public Works.

The Ontario Government erected New Parliament Buildings at a cost of \$1,800,000, with practically no extras.

The Dominion Government erected the Langevin Block with extras nearly as much as the original contracts, and the Curran Bridge with extras over twice as much as the original contracts.

### A Comparison as to Timber Sales.

Before Confederation (1841 to 1867), 9,904 miles of timber lands were sold at 50 cents a mile, and 2,561 miles were sold at \$45.50 a mile of bonus (or \$116,771), or 12,465 miles in all.

The Sandfield Macdonald Government, 1867 to 1871, sold 635 miles of timber lands at \$260 per mile, or \$165,362.

The Blake Government, 1871, sold 5,031 miles of timber lands at \$117 per mile, or \$592,601.

The Dominion Government sold several thousand miles of timber lands in the Disputed territory in 1883-4, at only \$5.00 per mile.

The Mowat Government, 1873-1894, sold 4,234 miles of timber lands at \$1,205 per mile, or \$5,101,627.

### A Comparison as to Methods of Selling Crown Timber.

Ontario Crown timber berths are sold only by public auction after the fullest publicity.

The Dominion Government voted down, during the session of 1894, a motion to have all Dominion sales by public auction only, thus still adhering to the practice of selling by tender or privately.

*The Canada Lumberman*, May, 1894, in comparing the Ontario method of selling timber berths by public auction only, with that of the Dominion by tender, says:—"If we take the prices secured at the (Ontario) sales, and compare them with prices obtained by other methods of sale, only one conclusion can be reached as to the financial results accruing from the sale of timber limits by auction."

### A Comparison as to Revenue from Crown Lands and Timber.

New York State receipts from lands in 1893 were only .....	\$24,334
Michigan " " " .....	14,258
Minnesota " " " .....	192,345
Indiana " " " .....	40,629
Ontario, 1893 .....	1,823,550

The above States, having no revenue from Crown Lands as Ontario, are compelled to raise most of their revenue by a direct tax on counties, amounting to \$4,023,071 in New York State; to \$1,272,000 in Michigan; to \$1,300,000 in Minnesota, and to \$1,497,000 in Indiana.

### A Comparison as to Cost of Asylum Maintenance.

Cost per inmate per annum for maintenance of patients in Ontario Asylums, based on average of three years .....	\$138 43
Montreal Protestant Asylum, average for 1892 and 1893 .....	181 12
78 U. S. Asylums, average cost of maintenance .....	227 88
English Asylums, average of 21 years .....	151 84
New South Wales Asylums, average for 21 years .....	193 96

### A Comparison as to Voters' Lists.

The Ontario Voters' Lists Act was greatly simplified during the session of 1894, combining the most simple and effective way of adding Manhood Franchise voters to the lists at small cost to the Municipality, by means of Registration Courts.

The cost of the last two revisions of the Dominion Voters' Lists was \$900,000.

### Comparisons as to Fees.

During the session of 1894 Messrs. A. F. Wood and E. F. Clarke, Conservative M.P.P.'s, lead in denouncing the fee system.

To show the hollowness of their pretensions, A. F. Wood, M.P.P., has received \$13,000 during the last four years in fees from the Dominion Government, as a valuator at the rate of \$10 a day, and full travelling and hotel expenses.

E. F. Clarke, M.P.P., as a member of the Royal Prohibition Commission, received \$1,213 as fees and expenses.

The fee system, which is so obnoxious to the Ontario Conservatives, is liberally practiced by the Dominion Government. Mr. D. O'Connor, of O'Connor & Hogg, Barristers, of Ottawa, received over \$22,000 in legal fees in ten years. It was shown in the Public Accounts Committee at Ottawa, during the present session, that Mr. O'Connor has been in the habit of drawing \$100 fees, while his partner has drawn the same amount for the same work, though the former did not act as counsel at all.

The total legal fees paid by the Dominion Government for the year 1892-3, amounted to \$141,422, though there is a fully equipped Minister of Justice and law department.

### Cost of Dominion Officials.

The following amounts were paid by the Dominion to officials in Ontario for the year ending June 30th, 1892:—

Postmasters, salaries.....	\$363,828 82
Commissions, allowances, etc.....	67,573 85
	\$431,402 67
Postoffice inspectors, mail clerks, etc., salaries and contingencies .....	117,112 93
Inspectors of Weights and Measures, salaries and contingencies .....	28,397 28
Gas inspectors, salaries and contingencies.....	8,087 10
Excise officers, salaries and contingencies.....	133,062 30
Customs officials, salaries and contingencies.....	291,924 48
	Total.....
	\$1,059,986 76

This statement does not include any of the departmental officials at Ottawa, the military officials, nor a few other officers.

### A Comparison as to Royal Commissions.

The following valuable Royal Commissions have been issued by the Mowat Government at small cost:—

The Agricultural Commission at a cost of .....	\$6,000
Respecting Municipal Institutions at a cost of.....	3,650
Respecting Mineral Resources at a cost of .....	6,770
Respecting Prison Reform at a cost of.....	3,800
Respecting Fish and Game Laws at a cost of .....	2,630
Respecting working of the Drainage Laws at a cost of.....	3,630
Respecting Dehorning of Cattle at a cost of.....	1,780
	\$28,260

In Comparison:—

The Royal Prohibition Commission had cost the Dominion, up to March 1st, 1894 .....	\$34,387
---	----------



### A Comparison as to Civil Government and Legislation.

The following table shows the rate at which the cost of Civil Government and Legislation increased in Ontario, Quebec, and the Dominion, respectively, from 1873 to 1893, inclusive :

Civil Government :	1873.	1893.	Increase.	Percentage.
Ontario .....	\$175,914	\$ 241,621	\$ 65,707	37
Quebec.....	135,106	251,908	116,802	86
Dominion.....	750,874	1,325,087	574,213	76
Legislation :				
Ontario .....	119,650	138,924	19,274	16
Quebec.....	163,569	199,769	36,200	22
Dominion .....	529,343	1,302,875	773,532	146

### A Comparison as to Expenditure, Ontario and Quebec.

The following comparison of certain items of annual expenditure in Ontario with the same items in Quebec, in 1893, is very instructive. The first table includes the sums spent in carrying on the public service of the Province, and in the e it will be seen the expenditure of Quebec is higher than that of Ontario, though the population is less. The second table includes appropriations that are intended to lessen the burden of local taxation, and in these Ontario is the more liberal :

TABLE I.

Service :	Quebec.	Ontario.	Excess in Quebec.
Civil Government.....	\$251,908	\$241,621	\$10,287
Legislation.....	199,769	138,924	60,845
Administration of Justice.	466,633	380,652	85,981

TABLE II.

	Quebec.	Ontario.	Excess in Ontario.
Prisons and Asylums....	\$300,000	\$778,839	\$478,839
Education.....	371,960	662,520	290,560

### A Comparison as to Supply Bills.

To make still clearer, if possible, the economy with which the finances of Ontario have been managed during the Mowat Administration, look at the sums voted under the Supply Bills of Ontario, Quebec, and the Dominion in the years 1873, and 1893 respectively :

	1873.	1893.	Increase.	Percentage.
Ontario.....	\$ 2,460,212	\$ 3,571,789	\$1,111,577	45
Quebec.....	1,713,750	4,361,397	2,647,647	154
Dominion.....	19,174,648	44,938,287	25,763,639	134

### A Comparison as to interest.

During 1893 Ontario realized the handsome sum of \$379,896.79, as interest on her investments, while her less fortunate sister, the Province of Quebec, paid in interest and charges on her public debt no less a sum than \$1,445,031.34.

### A Comparison as to Deficits and Surpluses.

Lastly, Quebec started with a clean sheet in 1877, and she has since piled up a debt of \$25,000,000. Ontario, liberal as her expenditures have been, out of surplus revenues, has accumulated in the same time a surplus of \$6,135,480, a difference of thirty-one millions of dollars !

**ation.**

ment and Legis-  
1873 to 1893,

centage.

7  
36  
76

6  
22  
46

**ebec.**

ntario with the  
cludes the sums  
ill be seen the  
on is less. The  
of local taxa-

Quebec.

287  
845  
981

Ontario.

839  
560

ces of Ontario  
oted under the  
73, and 1893

centage.

45  
154  
134

nterest on her  
n interest and

iled up a debt  
plus revenues,  
f thirty-one

t \$1 per 1,000.

