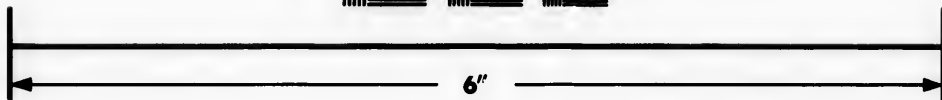
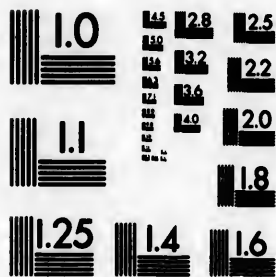


**IMAGE EVALUATION
TEST TARGET (MT-3)**



**Photographic
Sciences
Corporation**

23 WEST MAIN STREET
WEBSTER, N.Y. 14580
(716) 872-4503

18
20
22
25

**CIHM/ICMH
Microfiche
Series.**

**CIHM/ICMH
Collection de
microfiches.**



Canadian Institute for Historical Microreproductions / Institut canadien de microreproductions historiques

10
11

© 1987

Technical and Bibliographic Notes/Notes techniques et bibliographiques

The Institute has attempted to obtain the best original copy available for filming. Features of this copy which may be bibliographically unique, which may alter any of the images in the reproduction, or which may significantly change the usual method of filming, are checked below.

L'Institut a microfilmé le meilleur exemplaire qu'il lui a été possible de se procurer. Les détails de cet exemplaire qui sont peut-être uniques du point de vue bibliographique, qui peuvent modifier une image reproduite, ou qui peuvent exiger une modification dans la méthode normale de filmage sont indiqués ci-dessous.

- Coloured covers/
Couverture de couleur
- Covers damaged/
Couverture endommagée
- Covers restored and/or laminated/
Couverture restaurée et/ou pelliculée
- Cover title missing/
Le titre de couverture manque
- Coloured maps/
Cartes géographiques en couleur
- Coloured ink (i.e. other than blue or black)/
Encre de couleur (i.e. autre que bleue ou noire)
- Coloured plates and/or illustrations/
Planches et/ou illustrations en couleur
- Bound with other material/
Relié avec d'autres documents
- Tight binding may cause shadows or distortion
along interior margin/
La reliure serrée peut causer de l'ombre ou de la
distorsion le long de la marge intérieure
- Blank leaves added during restoration may
appear within the text. Whenever possible, these
have been omitted from filming/
Il se peut que certaines pages blanches ajoutées
lors d'une restauration apparaissent dans le texte,
mais, lorsque cela était possible, ces pages n'ont
pas été filmées.
- Additional comments:/
Commentaires supplémentaires:

- Coloured pages/
Pages de couleur
- Pages damaged/
Pages endommagées
- Pages restored and/or laminated/
Pages restaurées et/ou pelliculées
- Pages discoloured, stained or foxed/
Pages décolorées, tachetées ou piquées
- Pages detached/
Pages détachées
- Showthrough/
Transparence
- Quality of print varies/
Qualité inégale de l'impression
- Includes supplementary material/
Comprend du matériel supplémentaire
- Only edition available/
Seule édition disponible
- Pages wholly or partially obscured by errata
slips, tissues, etc., have been refilmed to
ensure the best possible image/
Les pages totalement ou partiellement
obscurcies par un feuillet d'errata, une pelure,
etc., ont été filmées à nouveau de façon à
obtenir la meilleure image possible.

This item is filmed at the reduction ratio checked below/
Ce document est filmé au taux de réduction indiqué ci-dessous.

10X	14X	18X	22X	25X	30X
<input type="checkbox"/>	<input checked="" type="checkbox"/>	<input type="checkbox"/>	<input type="checkbox"/>	<input type="checkbox"/>	<input type="checkbox"/>
12X	16X	20X	24X	28X	32X

The copy filmed here has been reproduced thanks to the generosity of:

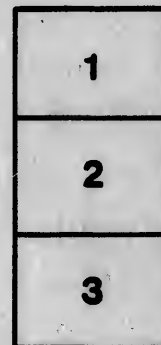
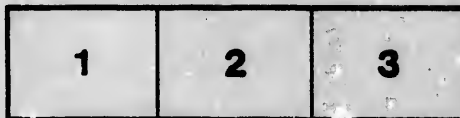
Library of Parliament and the
National Library of Canada.

The images appearing here are the best quality possible considering the condition and legibility of the original copy and in keeping with the filming contract specifications.

Original copies in printed paper covers are filmed beginning with the front cover and ending on the last page with a printed or illustrated impression, or the back cover when appropriate. All other original copies are filmed beginning on the first page with a printed or illustrated impression, and ending on the last page with a printed or illustrated impression.

The last recorded frame on each microfiche shall contain the symbol \rightarrow (meaning "CONTINUED"), or the symbol ∇ (meaning "END"), whichever applies.

Maps, plates, charts, etc., may be filmed at different reduction ratios. Those too large to be entirely included in one exposure are filmed beginning in the upper left hand corner, left to right and top to bottom, as many frames as required. The following diagrams illustrate the method:



L'exemplaire filmé fut reproduit grâce à la générosité de:

La Bibliothèque du Parlement et la
Bibliothèque nationale du Canada.

Les images suivantes ont été reproduites avec le plus grand soin, compte tenu de la condition et de la netteté de l'exemplaire filmé, et en conformité avec les conditions du contrat de filmage.

Les exemplaires originaux dont la couverture en papier est imprimée sont filmés en commençant par le premier plat et en terminant soit par la dernière page qui comporte une empreinte d'impression ou d'illustration, soit par le second plat, selon le cas. Tous les autres exemplaires originaux sont filmés en commençant par la première page qui comporte une empreinte d'impression ou d'illustration et en terminant par la dernière page qui comporte une telle empreinte.

Un des symboles suivants apparaîtra sur la dernière image de chaque microfiche, selon le cas: le symbole \rightarrow signifie "A SUIVRE", le symbole ∇ signifie "FIN".

Les cartes, planches, tableaux, etc., peuvent être filmés à des taux de réduction différents. Lorsque le document est trop grand pour être reproduit en un seul cliché, il est filmé à partir de l'angle supérieur gauche, de gauche à droite, et de haut en bas, en prenant le nombre d'images nécessaire. Les diagrammes suivants illustrent la méthode.

THE
ORIGIN OF USEFULNESS.

BY J. M. GROVER.

Author of the present management of Country Post Offices.
Also the improvement in Cash Account adopted by the
Post Office Department of Canada, July 1st 1881.

FARMERS HERALD PRINT
NEPAWA MAN.



A LETTER

*To The Honorable Members of the Senate and the
House of Commons of Canada:*

GENTLEMEN:—Many expressions go to no purpose, but in speaking of individuals who are styled statesmen, some little reflection on the old maxim, 'measures not men,' should, I think, be the chief proof to account for the consciousness of the person who substitutes statesman to the individual instead of some more suitable appellation. Such, I regret to say, is the miscarriage of the press and the leading orators at Ottawa; for those who are born to pass on such echoes are the people, and as there is nothing impossible to industry, the people of Canada may not only cease

to pass on these echoes, but declare they have ever been without a statesman.

A conscious impression is the first move to be made by any one in order to arrive at a proper conclusion. The origin of anything may be the place of beginning, the mind being centered there shows the subject is not fictitious, and part of the conclusion is obtained. Then let us arrive in British North America for the first time, we are conscious of being here. Did we light like a balloon, to fill up and leave again? Then let us consider the migratory expression of the Canadian people and consider its cause.

We have a recognised House of Commons in England, we have and we haven't a recognised one in Canada which we all admit, therefore a statesman in Canada may not get a conscious impression to arrive at a proper conclusion, which is absurd. The clear mind of the foreigner must have a shadowy opinion of Canada's abstract, which accounts to a great extent for the rapid growth of the Un-

ited States. A further explanation of our system of government, like virginity, is as inaccessible as the Island of St. Branda, and closes the school of inquiry by suggesting the potentially infinite, or a long look across the Atlantic. If we are in a position to demand representation in England with like indemnity accorded their members, being recognised owners of the British Empire. I say you representatives of the Senate and House of Commons at Ottawa, dissolve and remain dissolved. Such a dissolution would result in our having the cheap goods and comforts of the Old World, her reputation and immigration. I have no doubt, however, that if Canada were cut out of the earth like a slice from a pound cake, we would find Canadian ministers or officials of the Canadian Pacific Railway to represent the perpendicular sides rather than sacrifice their auspicious circumstances and believe in the attraction of gravity, then run chances of their lights being put out in conferring with members of the British House of Com-

mons. Besides the attention of the Mother Country in decorating the lives and tombs of our natives and statesmen is one of the impartial initiations of her ability to help govern this country.

Yours truly

Winnipeg, July 1st 1891. J. M. GROVER.

r
s
e
o

