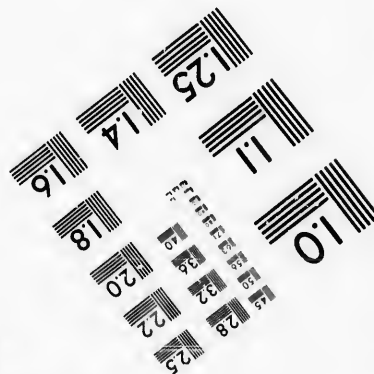
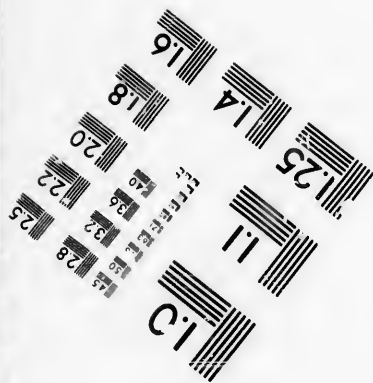
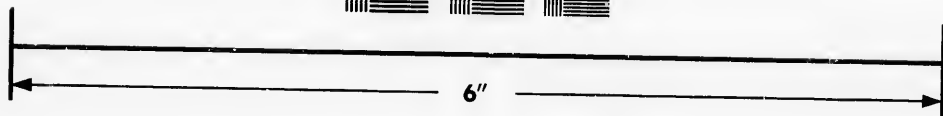
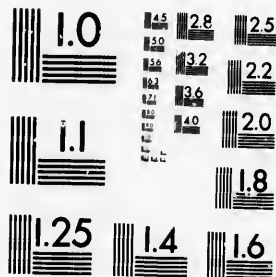


**IMAGE EVALUATION
TEST TARGET (MT-3)**



**Photographic
Sciences
Corporation**

23 WEST MAIN STREET
WEBSTER, N.Y. 14580
(716) 872-4503



**CIHM/ICMH
Microfiche
Series.**

**CIHM/ICMH
Collection de
microfiches.**



Canadian Institute for Historical Microreproductions / Institut canadien de microreproductions historiques



© 1986

Technical and Bibliographic Notes/Notes techniques et bibliographiques

The Institute has attempted to obtain the best original copy available for filming. Features of this copy which may be bibliographically unique, which may alter any of the images in the reproduction, or which may significantly change the usual method of filming, are checked below.

L'Institut a microfilmé le meilleur exemplaire qu'il lui a été possible de se procurer. Les détails de cet exemplaire qui sont peut-être uniques du point de vue bibliographique, qui peuvent modifier une image reproduite, ou qui peuvent exiger une modification dans la méthode normale de filmage sont indiqués ci-dessous.

- | | |
|--|--|
| <input type="checkbox"/> Coloured covers/
Couverture de couleur | <input type="checkbox"/> Coloured pages/
Pages de couleur |
| <input type="checkbox"/> Covers damaged/
Couverture endommagée | <input type="checkbox"/> Pages damaged/
Pages endommagées |
| <input type="checkbox"/> Covers restored and/or laminated/
Couverture restaurée et/ou pelliculée | <input type="checkbox"/> Pages restored and/or laminated/
Pages restaurées et/ou pelliculées |
| <input type="checkbox"/> Cover title missing/
Le titre de couverture manque | <input checked="" type="checkbox"/> Pages discoloured, stained or foxed/
Pages décolorées, tachetées ou piquées |
| <input type="checkbox"/> Coloured maps/
Cartes géographiques en couleur | <input type="checkbox"/> Pages detached/
Pages détachées |
| <input type="checkbox"/> Coloured ink (i.e. other than blue or black)/
Encre de couleur (i.e. autre que bleue ou noire) | <input checked="" type="checkbox"/> Showthrough/
Transparence |
| <input type="checkbox"/> Coloured plates and/or illustrations/
Planches et/ou illustrations en couleur | <input type="checkbox"/> Quality of print varies/
Qualité inégale de l'impression |
| <input type="checkbox"/> Bound with other material/
Relié avec d'autres documents | <input type="checkbox"/> Includes supplementary material/
Comprend du matériel supplémentaire |
| <input type="checkbox"/> Tight binding may cause shadows or distortion
along interior margin/
La reliure serrée peut causer de l'ombre ou de la
distorsion le long de la marge intérieure | <input type="checkbox"/> Only edition available/
Seule édition disponible |
| <input type="checkbox"/> Blank leaves added during restoration may
appear within the text. Whenever possible, these
have been omitted from filming/
Il se peut que certaines pages blanches ajoutées
lors d'une restauration apparaissent dans le texte,
mais, lorsque cela était possible, ces pages n'ont
pas été filmées. | <input type="checkbox"/> Pages wholly or partially obscured by errata
slips, tissues, etc., have been refilmed to
ensure the best possible image/
Les pages totalement ou partiellement
obscurcies par un feuillet d'errata, une pelure,
etc., ont été filmées à nouveau de façon à
obtenir la meilleure image possible. |
- Additional comments: [Printed ephemera] [4] p. There are some creases in the middle of the pages.
Commentaires supplémentaires:

This item is filmed at the reduction ratio checked below/
Ce document est filmé au taux de réduction indiqué ci-dessous.

10X	14X	18X	22X	26X	30X
<input type="checkbox"/>	<input type="checkbox"/>	<input type="checkbox"/>	<input type="checkbox"/>	<input checked="" type="checkbox"/>	<input type="checkbox"/>
12X	16X	20X	24X	28X	32X

The copy filmed here has been reproduced thanks to the generosity of:

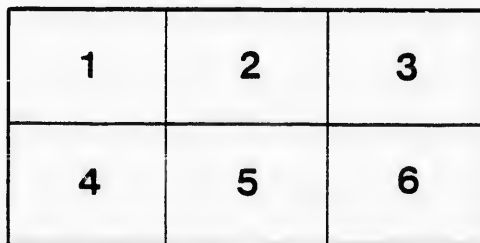
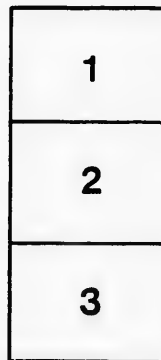
D. B. Weldon Library
University of Western Ontario
(Regional History Room)

The images appearing here are the best quality possible considering the condition and legibility of the original copy and in keeping with the filming contract specifications.

Original copies in printed paper covers are filmed beginning with the front cover and ending on the last page with a printed or illustrated impression, or the back cover when appropriate. All other original copies are filmed beginning on the first page with a printed or illustrated impression, and ending on the last page with a printed or illustrated impression.

The last recorded frame on each microfiche shall contain the symbol \rightarrow (meaning "CONTINUED"), or the symbol ∇ (meaning "END"), whichever applies.

Maps, plates, charts, etc., may be filmed at different reduction ratios. Those too large to be entirely included in one exposure are filmed beginning in the upper left hand corner, left to right and top to bottom, as many frames as required. The following diagrams illustrate the method:



L'exemplaire filmé fut reproduit grâce à la générosité de:

D. B. Weldon Library
University of Western Ontario
(Regional History Room)

Les images suivantes ont été reproduites avec le plus grand soin, compte tenu de la condition et de la netteté de l'exemplaire filmé, et en conformité avec les conditions du contrat de filmage.

Les exemplaires originaux dont la couverture en papier est imprimée sont filmés en commençant par le premier plat et en terminant soit par la dernière page qui comporte une empreinte d'impression ou d'illustration, soit par le second plat, selon le cas. Tous les autres exemplaires originaux sont filmés en commençant par la première page qui comporte une empreinte d'impression ou d'illustration et en terminant par la dernière page qui comporte une telle empreinte.

Un des symboles suivants apparaîtra sur la dernière image de chaque microfiche, selon le cas: le symbole \rightarrow signifie "A SUIVRE", le symbole ∇ signifie "FIN".

Les cartes, planches, tableaux, etc., peuvent être filmés à des taux de réduction différents. Lorsque le document est trop grand pour être reproduit en un seul cliché, il est filmé à partir de l'angle supérieur gauche, de gauche à droite, et de haut en bas, en prenant le nombre d'images nécessaire. Les diagrammes suivants illustrent la méthode.

MICHIGAN, OHIO
 於 CANADIAN CIRCUIT

EIGHTEEN
 THEATRES

CLEVELAND, CINCINNATI, BUFFALO,
 DETROIT, TORONTO,
 TOLEDO, LONDON, HAMILTON,
 WOODSTOCK, SAGINAW,
 GRAND RAPIDS, BAY CITY AND
 JACKSON.

Grand
 OPERA HOUSE
 London.

C. J. WHITNEY.
 LESSEE.

A. E. ROOTE.
 MANAGER

ONTARIO.



W. SMITH.

E. HOLLAND.

W. S. PARTRIDGE.

SMITH & BROS.

THE
 LEADING
 SANITARY
 PLUMBERS
 AND
 HEATING
 ENGINEERS
 OF
 WESTERN
 ONTARIO.

376
 RICHMOND STREET, LONDON.
 OPPOSITE GRAND OPERA HOUSE BUILDING.

A full stock of Supplies always on hand

TELEPHONE 538.

LADIES! THE ONLY WAY TO GET HELP IS THROUGH THE "FREE PRESS" WANT COLUMN.



**Parisian
Steam
Laundry**

73 & 75 DUNDAS STREET.

BRANCH OFFICES:

226 Dundas St. 752 Waterloo, 410 Hamilton Rd.
280 " " 572 Pall Mall, 251 Wellington.
310 " " 380 Richmond, 338 Ridout.
632 " " 485 " "

J. K. SPRY, Manager.

HUESTON'S

**LIVERY,
Goupe & Cab Stables**
WELLINGTON STREET.

Finest Horses and Carriages in the City.
OPEN DAY AND NIGHT. TELEPHONE 441.

ROBT. HUESTON,
Proprietor.

H. McKENNA,
—FOR—

Choice Cigars, Tobaccos
AND PIPES.

ALWAYS OPEN
..... AFTER THE OPERA.

225 DUNDAS STREET.

SPRING



1894.

WE have just received the finest assortment of Spring Hats ever shown in the city. We are leaders for correct shapes, try us. A pleasure to show goods.

Rivard

LONDON'S FASHIONABLE HATTER AND FURRIER
400 RICHMOND STREET.

WILLIAMS' Pianos

CANADA'S FAVORITE

Cannot be excelled for touch, singing quality, delicacy and great power of tone, with highest excellence of workmanship.

ALL THE LATEST VOCAL AND INSTRUMENTAL

MUSIC RECEIVED AS PUBLISHED.

Musical Instruments of all kinds, Strings and Fittings
AT LOWEST PRICES.

R. S. WILLIAMS & SON, 171 DUNDAS STREET,
LONDON, ONT.

J. A. CRODEN, Manager.



«PROGRAMME»

Tuesday, February 13th,

1894

ENGAGEMENT OF
ENGLAND'S PRIDE,
AMERICA'S FAVORITE

**Miss
Bessie
Bonehill**

IN HER MUSICAL

COMEDY

BY W. R. SEELEY,

PLAYMATES

UNDER THE DIRECTION OF
PAUL C. BLUM.

(Programme continued on next page.)

SOMETHING NEW.

Opera English & Canadian
Caramels. Chocolate Creams.

VERY FINEST French Crystalized FRUITS. Olives in Bulk.
.. Fresh Roquefort Cheese..

FITZGERALD, SCANDRETT & CO.
169 Dundas Street.

ESTABLISHED 1831.

**H. DAVIS & SON,
WATCHMAKERS
AND
JEWELLERS**

DEALERS IN ..
Watches, Clocks, Jewellery, Spectacles,
Silver Plated Ware, &c.

170 DUNDAS ST., LONDON, ONT.

W. T. STRONG

Dispensing
Chemist,

184 Dundas Street,
LONDON, - ONTARIO.

BROWN'S

Central Shoe Store,
145 DUNDAS ST.



We inventory February 20th, and are determined to reduce our Stock as much as possible before that date. To do this, we have cut down prices to a figure heretofore unheard of for such quality of goods. This Great Reduction will place the best selected stock of Staple and High-Grade Shoes within the reach of all.

REMEMBER, WE KEEP NO INFERIOR OR SHODDY GOODS.

..... EVERY LINE OF
BOOTS, SHOES, SLIPPERS, RUBBERS, OVERSHOES,
OVERGAITERS, LEGGINGS, MOCCASINS, ETC.,
IS THE BEST OF ITS KIND.

Our position enables us to sell cheaper than any other shoe store in this western section; but this Special Reduction cannot fail to further convince the Public, that for reliable footwear in all Standard Styles, "Brown's" is undoubtedly the Cheapest."

THIS CUT-DOWN-PRICE
—will also apply to our—
HANDSOME AMERICAN DESIGNS IN
LADIES' AND GENTS' DRESS SHOES,
WALKING, SKATING AND HOCKEY BOOTS;
Also our Complete, and unexcelled (for Style and Finish) assortment of YOUTHS', MISSES', BOYS', GIRLS' AND BABY SHOES.

NO RESERVE.
John S. Brown,
TELEPHONE 881.

IF YOU WANT THE BEST, TAKE THE "FREE PRESS." ALL THE NEWS!

IF YOU SEE IT IN THE "LONDON FREE PRESS," IT IS SO!

— TRY —
SOUTHCOTTS
 FOR Nice Suit
 Fancy Vest
 ..OR Trousers
 NEAT LINE OF LIGHT-WEIGHT OVERCOATINGS IN STOCK.
 Satisfaction Assured. Prices Right.
361 RICHMOND STREET.

—————
 I-I-I-I-I-I-I-I-I-I

PRINTERS
 LITHOGRAPHERS
 ENGRAVERS

The
London
Printing and
Lithographing
Co'y,
 SUCCESSORS TO FREE PRESS
 PRINTING AND LITHO.
 DEPARTMENTS.

OFFICE,
 "FREE PRESS"
 BUILDING.

BEST WORK
 AT MODERATE
 PRICES.

I-I-I-I-I-I-I-I-I-I

TEGUMSEH HOUSE
 LONDON.



Directly opposite G.T.R depot;
 street railway past the doors;
 convenient to all the wholesale
 and retail business houses of
 city, making it the most desir-
 able hotel in the city; elevator,
 and heated throughout with
 steam.

Porter in attendance on
 arrival of all trains.

RATES, \$2.00 AND \$2.50
 PER DAY,

ACCORDING TO LOCATION.

No Extra Charge For Baggage.

C. W. DAVIS, PROP.

LATEST SHAPES

In American and English

Spring Hats

JUST OPENED.

GRAHAM BROS.,

Leading Hatters and Furnishers.

«Programme Continued.»

CAST OF CHARACTERS.

Gussie Crotchett, clerk W. R. Seely
 Lord Bluffwell } { Charles Jerome
 Sir Doolittle } { Wm. Jerome
 William Frogdon, head of the } William H. Maxwell
 firm of Frogdon & Co.
 Captain Mainbrae Kirwin West
 Prof. Pattiwisky, music teacher Sig. A. Borelli
 Charles, clerk George Brengle
 Alice Frogdon, Wm. Frogdon's daughter Minnie Thurgate
 Eliza Frogdon, Wm. Frogdon's maiden sister Annette Zelna
 Rosie Diana Harding
 Hattie Pets of the Store { Maud Altea Blume
 Violet Mollie Vincent
 Lottie Sample Bessie Tannehill

—AND—
BESSIE BONEHILL as Jack Wellington, Cashier.

SYNOPSIS OF SCENES.

ACT I.—Interior of Frogdon's store, New York.
 ACT II.—A wharf. Ocean steamer about to sail for England.
 The storm. The wreck. Saved.
 ACT III.—Drawing-room in Frogdon's house. Alice's birth-
 day party.

MUSICAL NUMBERS.

ACT I.—"Three Little Chaps," Bessie Bonehill. "Dinky
 Arno," Minnie Thurgate. Finale, Bessie Bonehill and Company.
 ACT II.—"Wedding of the Lobster and the Crab," with
 eccentric dance, Jeromes'. "Playmates," Bessie Bonehill.
 Instrumental duets. Seely & West. "Jolly Jack" with Horn-
 pipe, Bessie Bonehill. Medley, entire Company.
 ACT III.—Minuet, Bessie Bonehill, Minnie Thurgate,
 "Buttercups and Daisies," Bessie Bonehill. Parodies by Jer-
 omes. Bule-que Italian Opera by Signor Borelli and Miss
 Zelna. Piano specialty, Signor Borelli. Marguerite with
 dance, Minnie Thurgate. "When Love is Young," Annette
 Zelna. Finale, Company.

EXECUTIVE STAFF.

Harry C. Egerton Representative
 Wm. H. Maxwell Stage Manager
 William Reynolds Musical Director
 John Mulholland Stage Carpenter
 C. Franklin Smith Master of Properties

(Programme continued on last page.)

McLEAN'S HARDWARE

— FOR —

Bissell's Carpet Sweepers.

WE CAN SHOW YOU TWELVE DIFFERENT STYLES SAME
 AS ARE NOW DISPLAYED BY THE BISSELL COM-
 PANY AT THE WORLD'S FAIR.

CALL AND SEE THESE GOODS

— AT —

McLEAN'S HARDWARE,
 151 Dundas Street.

Wm. Stevely & Son,

— THE LEADING DEALERS IN —

STOVES, RANGES,

..AND..

HOUSE FURNISHING GOODS.

OUR STOCK IS THE LARGEST.

OUR PRICES THE LOWEST.

362 RICHMOND STREET.

'PHONE 452.

W. I. STRONG,

Dispensing

Chemist,

184 DUNDAS ST.,

LONDON, ONT.

..FOR..

Fine Etchings....

—AND—

Engravings

—TRY—

O. B. GRAVES,

222 DUNDAS STREET.



BRENER BROS.

LONDON ONT.

FOR SALE AT

JOE RANKIN'S

..... OPPOSITE MASONIC TEMPLE.

LOOK OUT FOR THE "LONDON FREE PRESS" ON ALL EARLY MORNING TRAINS.

EDY BROS.

The Artistic Photographers,

—RECEIVED—

Three First Prizes

—AND—

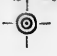
DIPLOMA

For Finest Display of Photography
AT WESTERN FAIR, 1893.

Cabinet Photos, \$3 per doz.

EDY BROS.,

214 DUNDAS STREET.

The **HUB** 
Restaurant,

203 & 205 DUNDAS STREET.

For a NICE LUNCH after the
Opera, go to the
Hub Restaurant.

Steaks, Chops, Chicken,
Oysters, Etc.

OPEN TILL 12.00 P.M.

J. W. MARTIN, Prop.
(Late of the Martin House)

«Programme Concluded.»

During the evening, incidental to the stage performance, the ORCHESTRA of the Grand Opera House, under the direction of MR. FRED. L. EVANS, will perform the following selections

OVERTURE—"Bohemian Girl," Dalfé
SELECTION—"Dorothy," Cellier
LANCERS—"Wang" (by request), Boettger
GALOP—"Comet," Weingarten
The above programme subject to transposition

N. B.—The Orchestra of the Grand Opera House may be secured for engagements outside the theatre, by applying at or addressing the Box Office.

The Furniture used on stage is supplied by JOHN FERGOUSON & SON, Furniture Manufacturers.

NEXT + ATTRACTION

THURSDAY, FEB. 15th.

CHORAL SOCIETY CONCERT

Chorus of 100 voices. Orchestra, 40.

R. POCOCKE, Conductor.

FRIDAY, FEB. 16th.

THE FAVORITE **R. E. (Bob) GRAHAM**
COMEDIAN...

(Who will be remembered as Gen'l Knickerbocker in Little Tycoon and Gen'l Bomberla in the Sea King Operas.)

In His Highly Successful Comedy,

AFTER THE BALL

ADAPTED FROM THE FRENCH.

A PLAY OF TO-DAY, UP TO DATE.

The Season's Greatest Novelty, With a record of over 400 consecutive nights in Paris and 150 nights in London.

PRICES:—25c., 50c., 75c., \$1.00. Plan now open.

A FINE PERFORMANCE

is a satisfactory return for your money, but when you can get from us a superior quality of Coal or Wood at the same price you would pay for an inferior quality, it is even more satisfactory. When in need of "warmth," try us.

CAMERON'S

421 RICHMOND STREET,
and BURWELL STREET at G. T. R.

FIND YOUR FORTUNE IN LUCKY
SANTO DOMINGO

INVESTMENT BONDS guaranteed by the SANTO DOMINGO GUARANTY CO.

Allowments take place monthly, and are payable in U. S. gold coin in sums of \$160,000, \$40,000, \$20,000, etc.
5,692 Bonds paid monthly, aggregating \$574,880. Subscription fees, \$10, \$5, \$2, \$1, 50c. and 25c.

Apply to Local Agents or address,

ANTONIO MORA, CITY OF SANTO DOMINGO,
SANTO DOMINGO, D. R.

Roses, Carnations,

Palms,

Ferns, Bulbs,

J. GAMMAGE & SONS,

213 Dundas Street.

INDIAN... CEYLON TEA IMPORTING HOUSE.

NEW BLENDS, DELICIOUS AND ECONOMICAL, AT MODERATE PRICES.

"English Breakfast," "Five o'clock Tea," & "Club House" Blends.
60c. 50c. 45c.

These Blends are standard selections of choice Teas. Highly recommended to families for their fine quality and economical properties.

S. FUGE,

—IMPORTER OF—
CHOICE TEAS
TELEPHONE 858.

212 Dundas St.
LONDON.

