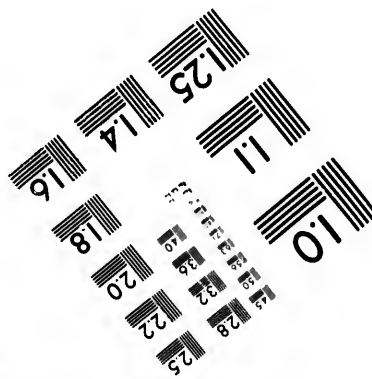
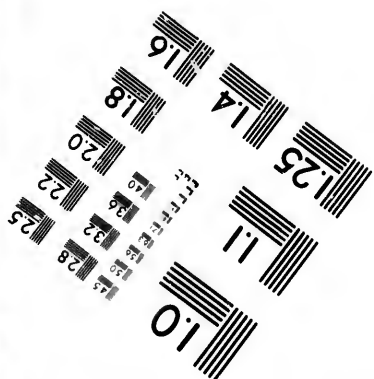
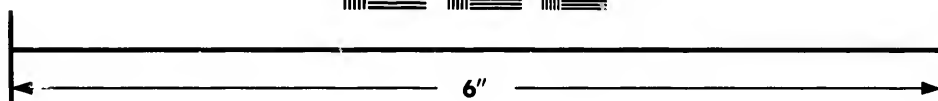
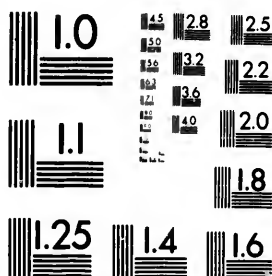


**IMAGE EVALUATION
TEST TARGET (MT-3)**

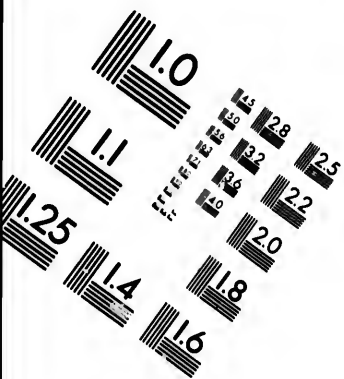


**Photographic
Sciences
Corporation**

23 WEST MAIN STREET
WEBSTER, N.Y. 14590
(716) 872-4503

Canadian Institute f



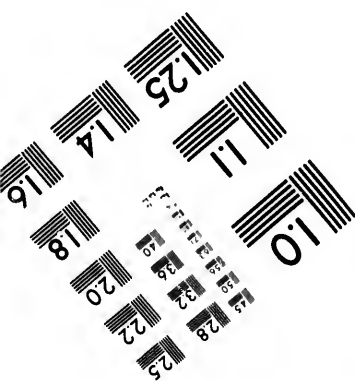
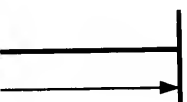


**CIHM/ICMH
Microfiche
Series.**

**CIHM/ICMH
Collection de
microfiches.**



Canadian Institute for Historical Microreproductions / Institut canadien de microreproductions historiques



© 1984

Technical and Bibliographic Notes/Notes techniques et bibliographiques

The Institute has attempted to obtain the best original copy available for filming. Features of this copy which may be bibliographically unique, which may alter any of the images in the reproduction, or which may significantly change the usual method of filming, are checked below.

L'Institut a microfilmé le meilleur exemplaire qu'il lui a été possible de se procurer. Les détails de cet exemplaire qui sont peut-être uniques du point de vue bibliographique, qui peuvent modifier une image reproduite, ou qui peuvent exiger une modification dans la méthode normale de filmage sont indiqués ci-dessous.

- Coloured covers/
Couverture de couleur
- Covers damaged/
Couverture endommagée
- Covers restored and/or laminated/
Couverture restaurée et/ou pelliculée
- Cover title missing/
Le titre de couverture manque
- Coloured maps/
Cartes géographiques en couleur
- Coloured ink (i.e. other than blue or black)/
Encre de couleur (i.e. autre que bleue ou noire)
- Coloured plates and/or illustrations/
Planches et/ou illustrations en couleur
- Bound with other material/
Relié avec d'autres documents
- Tight binding may cause shadows or distortion along interior margin/
La reliure serrée peut causer de l'ombre ou de la distortion le long de la marge intérieure
- Blank leaves added during restoration may appear within the text. Whenever possible, these have been omitted from filming/
Il se peut que certaines pages blanches ajoutées lors d'une restauration apparaissent dans le texte, mais, lorsque cela était possible, ces pages n'ont pas été filmées.
- Additional comments:/
Commentaires supplémentaires:

- Coloured pages/
Pages de couleur
- Pages damaged/
Pages endommagées
- Pages restored and/or laminated/
Pages restaurées et/ou pelliculées
- Pages discoloured, stained or foxed/
Pages décolorées, tachetées ou piquées
- Pages detached/
Pages détachées
- Showthrough/
Transparence
- Quality of print varies/
Qualité inégale de l'impression
- Includes supplementary material/
Comprend du matériel supplémentaire
- Only edition available/
Seule édition disponible
- Pages wholly or partially obscured by errata slips, tissues, etc., have been refilmed to ensure the best possible image/
Les pages totalement ou partiellement obscurcies par un feuillet d'errata, une pelure, etc., ont été filmées à nouveau de façon à obtenir la meilleure image possible.

This item is filmed at the reduction ratio checked below/
Ce document est filmé au taux de réduction indiqué ci-dessous.

10X	14X	18X	22X	26X	30X
<input type="checkbox"/>	<input type="checkbox"/>	<input checked="" type="checkbox"/>	<input type="checkbox"/>	<input type="checkbox"/>	<input type="checkbox"/>
12X	16X	20X	24X	28X	32X

The copy filmed to the generos

The images ap possible consi of the original filming contra

Original copie beginning with the last page v sion, or the ba other original e first page with sion, and endin or illustrated in

The last recor shall contain t TINUED"), or t whichever app

Maps, plates, different reduc entirely includ beginning in th right and top t required. The t method:

The copy filmed here has been reproduced thanks to the generosity of:

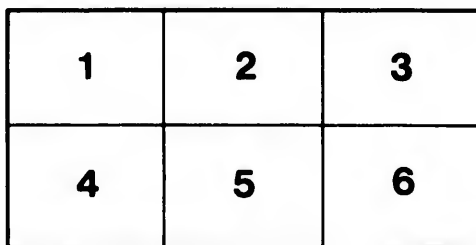
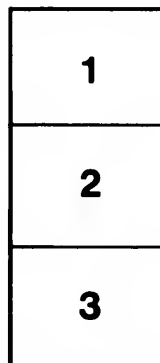
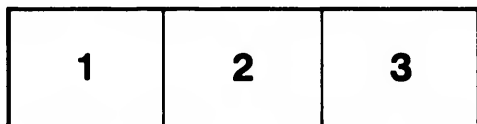
University of British Columbia Library

The images appearing here are the best quality possible considering the condition and legibility of the original copy and in keeping with the filming contract specifications.

Original copies in printed paper covers are filmed beginning with the front cover and ending on the last page with a printed or illustrated impression, or the back cover when appropriate. All other original copies are filmed beginning on the first page with a printed or illustrated impression, and ending on the last page with a printed or illustrated impression.

The last recorded frame on each microfiche shall contain the symbol \rightarrow (meaning "CONTINUED"), or the symbol ∇ (meaning "END"), whichever applies.

Maps, plates, charts, etc., may be filmed at different reduction ratios. Those too large to be entirely included in one exposure are filmed beginning in the upper left hand corner, left to right and top to bottom, as many frames as required. The following diagrams illustrate the method:



L'exemplaire filmé fut reproduit grâce à la générosité de:

University of British Columbia Library

Les images suivantes ont été reproduites avec le plus grand soin, compte tenu de la condition et de la netteté de l'exemplaire filmé, et en conformité avec les conditions du contrat de filmage.

Les exemplaires originaux dont la couverture en papier est imprimée sont filmés en commençant par le premier plat et en terminant soit par la dernière page qui comporte une empreinte d'impression ou d'illustration, soit par le second plat, selon le cas. Tous les autres exemplaires originaux sont filmés en commençant par la première page qui comporte une empreinte d'impression ou d'illustration et en terminant par la dernière page qui comporte une telle empreinte.

Un des symboles suivants apparaîtra sur la dernière image de chaque microfiche, selon le cas: le symbole \rightarrow signifie "A SUIVRE", le symbole ∇ signifie "FIN".

Les cartes, planches, tableaux, etc., peuvent être filmés à des taux de réduction différents. Lorsque le document est trop grand pour être reproduit en un seul cliché, il est filmé à partir de l'angle supérieur gauche, de gauche à droite, et de haut en bas, en prenant le nombre d'images nécessaire. Les diagrammes suivants illustrent la méthode.

BRITISH COLUMBIA.

The discovery of gold in British Columbia will give a vast impetus to the growth of our power on the western side of the American continent, and will hasten forward the completion of that line of railway from New Brunswick to the Pacific, which will be of such incalculable importance to the commerce of England. In its geographical position British Columbia is most favourably situated. The coast, abundantly indented with numerous bays and inlets, is washed by the Pacific, and the fine island of Vancouver stands before the southern portion of a vast natural breakwater, protecting the mouth of Fraser River and the high road to the gold region.

Of the climate of this part of the Hudson's Bay Territory, now formed into a British colony, we are at length beginning to learn something of a reliable nature. A gentleman who has resided there for eight years says that, for the beauty of its scenery, the salubrity of its climate, and its general adaptation to commerce, the territory on the shores of the Pacific cannot be surpassed by any country in the world; the soil, too, is fertile in the highest degree, and possesses great agricultural capabilities. The face of the country presents a succession of mountain ridges, valleys, and plains.

That portion of the country which lies between the Cascade Mountains and the Pacific is, we are informed, subject to a remarkably equable temperature, the mean being about fifty-four degrees Fahrenheit. The equable character of the climate is probably occasioned by the circumstance of the prevailing summer winds being from the north, and laden with the cooling influences of the Polar Sea; and that the winter winds, coming from the west, the south, and the south-east—except the latter, which comes from the snows of the mountains—tend to prevent that degree of cold which would otherwise prevail. There are about four months of winter, generally beginning in November and lasting till March. Snow seldom lies more than a week on the ground; and though there are frequent rains they are not heavy. Slight frosts occur as early as September. In the neighbourhood of Vancouver fruit-trees blossom early in April; in the middle of May peas are a foot high and strawberries in blossom. All fruits and vegetables are as early there as in this country. Grass grows to the tops of the hills. According to Lieutenant Wilkes, one hundred days were distributed in seventy-six fair, nineteen cloudy, and eleven rainy. In many respects the climate of the middle section is less favourable: it is subject to droughts, and is warmer in summer and colder in winter. The air, however, is pure and healthy. The eastern section, under the snows of the Rocky Mountains, cannot be praised for its climate. It is subject to great and sudden changes of temperature—occasionally going through all the gradations of summer, autumn, and winter in a single day.

Respecting the western section of the colony, we learn that it is peculiarly well adapted for agricultural operations. In some places there is a deep black vegetable loam; in others a light brown loam. The hills are of basalt, stone, and slate. The undulating surface is well watered and well wooded—bearing pine, spruce, red and white oak, ash, arbutus, cedar, arbor vitae, poplar, maple, willow, cherry, and tea; besides underwood of hazel and roses. All kinds of grain can be procured in abundance. Pears and apples succeed admirably, and the different vegetables produced in England yield there most abundant crops. In the middle section, which is 1000 feet higher than the western, excellent crops and large stocks of cattle have, it is said, been raised by the missionaries near the Crusade Mountains. The eastern section seems little adapted for agriculture. However, grain and vegetables have been produced at Fort Hall; and cattle thrive without the necessity of being housed in winter. A market for the timber will eventually spring up in the Pacific, and there is abundance of water-power for manufactories. The Fraser and other rivers abound in salmon, sturgeon, cod, carp, sole, flounders, perch, herrings, and eels, as well as crabs, oysters, and other shell fish. The elk, the deer, antelopes, bears, wolves, foxes, musk rats, and martens, abound in the western section; buffaloes are not with in great numbers. In the spring and autumn the rivers are alive with geese, ducks, and other waterfowl.—*Canadian News.*

