

**CIHM
Microfiche
Series
(Monographs)**

**ICMH
Collection de
microfiches
(monographies)**



Canadian Institute for Historical Microreproductions / Institut canadien de microreproductions historiques

© 1998

Technical and Bibliographic Notes / Notes techniques et bibliographiques

The Institute has attempted to obtain the best original copy available for filming. Features of this copy which may be bibliographically unique, which may alter any of the images in the reproduction, or which may significantly change the usual method of filming are checked below.

- Coloured covers / Couverture de couleur
- Covers damaged / Couverture endommagée
- Covers restored and/or laminated / Couverture restaurée et/ou pelliculée
- Cover title missing / Le titre de couverture manque
- Coloured maps / Cartes géographiques en couleur
- Coloured ink (i.e. other than blue or black) / Encre de couleur (i.e. autre que bleue ou noire)
- Coloured plates and/or illustrations / Planches et/ou illustrations en couleur
- Bound with other material / Relié avec d'autres documents
- Only edition available / Seule édition disponible
- Tight binding may cause shadows or distortion along interior margin / La reliure serrée peut causer de l'ombre ou de la distorsion le long de la marge intérieure.
- Blank leaves added during restorations may appear within the text. Whenever possible, these have been omitted from filming / Il se peut que certaines pages blanches ajoutées lors d'une restauration apparaissent dans le texte, mais, lorsque cela était possible, ces pages n'ont pas été filmées.
- Additional comments / Commentaires supplémentaires:

L'Institut a microfilmé le meilleur exemplaire qu'il lui a été possible de se procurer. Les détails de cet exemplaire qui sont peut-être uniques du point de vue bibliographique, qui peuvent modifier une image reproduite, ou qui peuvent exiger une modification dans la méthode normale de filmage sont indiqués ci-dessous.

- Coloured pages / Pages de couleur
- Pages damaged / Pages endommagées
- Pages restored and/or laminated / Pages restaurées et/ou pelliculées
- Pages discoloured, stained or foxed / Pages décolorées, tachetées ou piquées
- Pages detached / Pages détachées
- Showthrough / Transparence
- Quality of print varies / Qualité inégale de l'impression
- Includes supplementary material / Comprend du matériel supplémentaire
- Pages wholly or partially obscured by errata slips, tissues, etc., have been refilmed to ensure the best possible image / Les pages totalement ou partiellement obscurcies par un feuillet d'errata, une pelure, etc., ont été filmées à nouveau de façon à obtenir la meilleure image possible.
- Opposing pages with varying colouration or discolourations are filmed twice to ensure the best possible image / Les pages s'opposant ayant des colorations variables ou des décolorations sont filmées deux fois afin d'obtenir la meilleure image possible.

This item is filmed at the reduction ratio checked below /
Ce document est filmé au taux de réduction indiqué ci-dessous.

10x			14x			18x			22x			26x			30x					
		12x		16x		20x		24x		28x		32x								

The copy filmed here has been reproduced thanks to the generosity of:

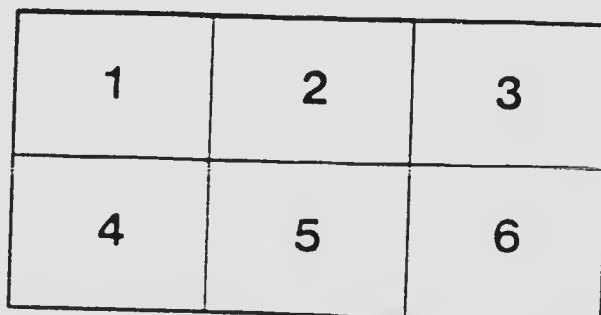
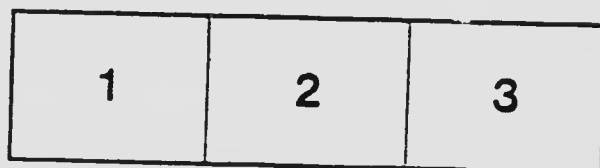
National Library of Canada

The images appearing here are the best quality possible considering the condition and legibility of the original copy and in keeping with the filming contract specifications.

Original copies in printed paper covers are filmed beginning with the front cover and ending on the last page with a printed or illustrated impression, or the back cover when appropriate. All other original copies are filmed beginning on the first page with a printed or illustrated impression, and ending on the last page with a printed or illustrated impression.

The last recorded frame on each microfiche shall contain the symbol \rightarrow (meaning "CONTINUED"), or the symbol ∇ (meaning "END"), whichever applies.

Maps, plates, charts, etc., may be filmed at different reduction ratios. Those too large to be entirely included in one exposure are filmed beginning in the upper left hand corner, left to right and top to bottom, as many frames as required. The following diagrams illustrate the method:



L'exemplaire filmé fut reproduit grâce à la générosité de:

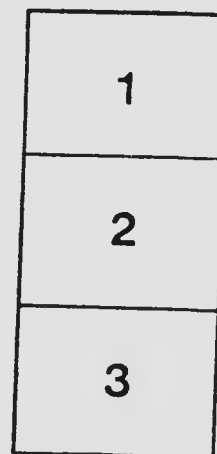
Bibliothèque nationale du Canada

Les images suivantes ont été reproduites avec le plus grand soin, compte tenu de la condition et de la netteté de l'exemplaire filmé, et en conformité avec les conditions du contrat de filmage.

Les exemplaires originaux dont la couverture en papier est imprimée sont filmés en commençant par le premier plat et en terminant soit par la dernière page qui comporte une empreinte d'impression ou d'illustration, soit par le second plat, selon le cas. Tous les autres exemplaires originaux sont filmés en commençant par la première page qui comporte une empreinte d'impression ou d'illustration et en terminant par la dernière page qui comporte une telle empreinte.

Un des symboles suivants apparaîtra sur la dernière image de chaque microfiche, selon le cas: le symbole \rightarrow signifie "A SUIVRE", le symbole ∇ signifie "FIN".

Les cartes, planches, tableaux, etc., peuvent être filmés à des taux de réduction différents. Lorsque le document est trop grand pour être reproduit en un seul cliché, il est filmé à partir de l'angle supérieur gauche, de gauche à droite, et de haut en bas, en prenant le nombre d'images nécessaire. Les diagrammes suivants illustrent la méthode.



MICROCOPY RESOLUTION TEST CHART

ANSI and ISO TEST CHART No. 21



1.45

1.5

1.6

1.8

2.0

2.2

2.5

2.8

3.2

3.6

4.0

4.5

5.0

5.6

6.3

7.1

8.0

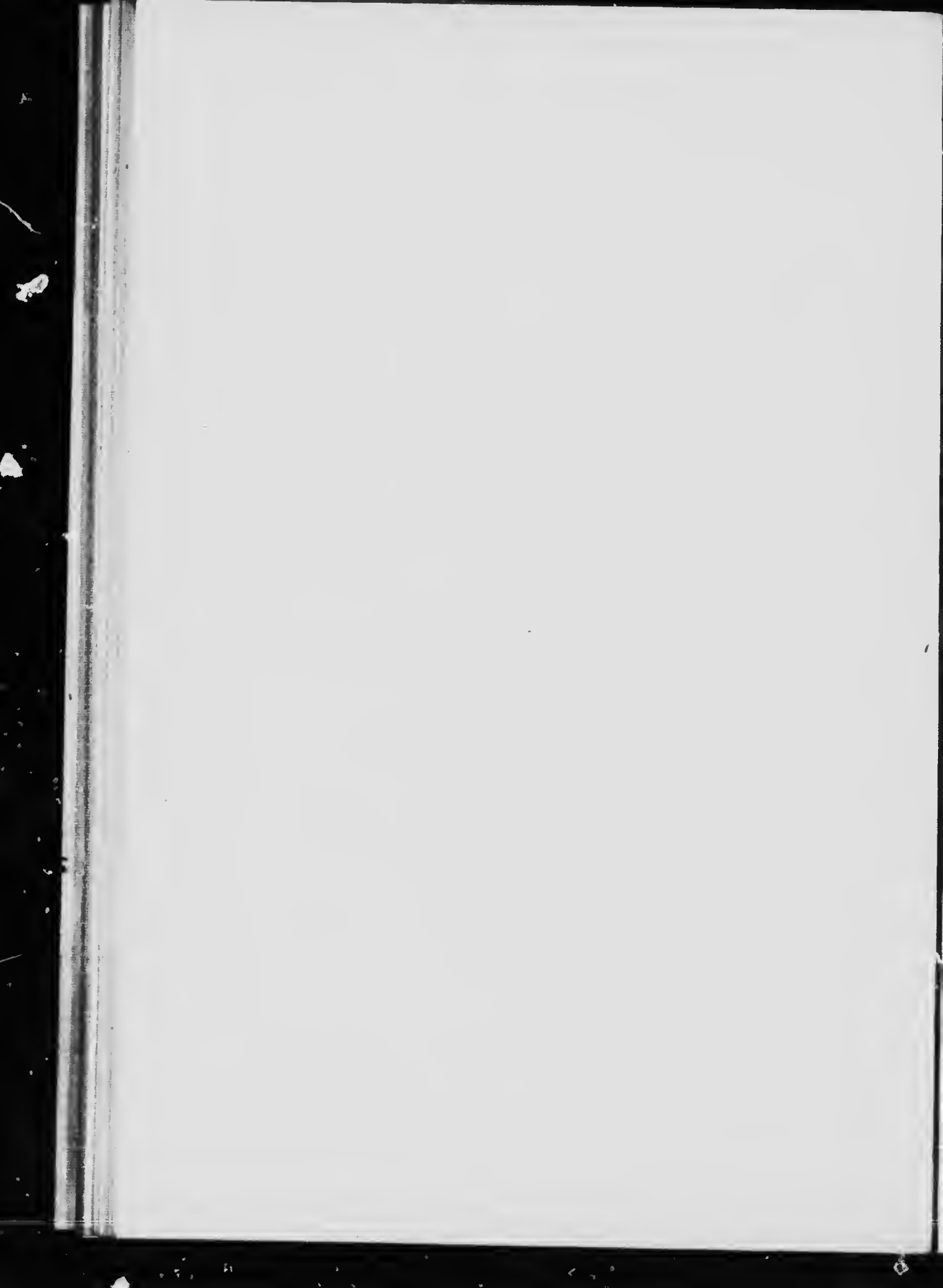
9.0

10



APPLIED IMAGE Inc

165 East Main Street
Rochester, New York 14607 USA
716-482-1100 Phone
716-488-5984 Fax



O. H. M. S.

W. J. Gerald
Deputy Minister.

LABORATORY
OF THE
INLAND REVENUE DEPARTMENT
OTTAWA, CANADA
BULLETIN No. 130
TEA, 1906

LABORATORY
OF THE
INLAND REVENUE DEPARTMENT
OTTAWA, CANADA

BULLETIN No. 130

TEA, 1906

OTTAWA, January 8, 1907.

W. J. GERALD, Esq.,

Deputy Minister of Inland Revenue.

SIR,—In the month of July last representations were made to you regarding the artificial colouring of teas, and stating that large quantities of artificially coloured green, Japan and Ceylon teas were imported into the Canadian market by every steamer. The complaints came from Toronto, and although it was believed that such colouring or 'facing' was not a common practice, it was nevertheless thought advisable to cause a collection of tea samples to be made. This took place in August and September, 1906, when samples were collected and subjected to examination in this laboratory, the results of which, as ascertained by Mr. A. Valin, are given in the tabulated statement accompanying this report.

In considering these results it is necessary to remember that there exists an Order in Council, dated September 11, 1894, establishing the following regulation under the 19th section of the Adulteration Act as to when the tea shall be considered as adulterated:—

Tea shall be considered as adulterated which contains leaves other than those of the tea-plant; or previously infused leaves or leaves of inferior quality to such an extent as to reduce the amount of extract or substances soluble in hot water to less than thirty per cent, or cause the proportion of ash soluble in hot water to be less than two and three quarters per cent; or any admixture of chemicals or other deleterious substances, or such an amount of mineral matter as will cause the amount of ash to exceed eight per cent reckoned on the sample dried at 100° C.

It has not been found necessary to introduce into the statement a column giving the amount of ash calculated on the dry substance. The highest percentage of ash found in any sample is 7.20 (No 713) which corresponds to 7.87 on the dry substance. This result disposes of the assertion that many of the teas sold in our markets are artificially coloured or 'faced' because the materials used for the purpose tend to increase the quantity of ash. Neither was any evidence of facing obtained in treating the samples with warm water. Seven of the samples (Nos. 31505, 31508, 29366, 30182, 30161, 28177 and 28180) show smaller percentages of soluble ash in the dried sample than 2.75, but since the amount of hot water extract is not below the minimum they cannot be challenged as containing exhausted tea leaves, although they may be classed as doubtful.

On the whole it has to be stated that there is no evidence of adulteration to be found in the samples collected, although there are no doubt great variations as regards quality. This favourable showing is to be expected in view of the fact that the following clause under 'Prohibited Goods' still forms part of the Customs Tariff:—'1205. 'Tea adulterated with spurious leaf or with exhausted leaves, or containing so great an admixture of chemicals or other deleterious substances as to make it unfit for use.' Nevertheless it is necessary that great care should be exercised in the inspection of teas as they arrive at the ports of entry, because, according to the report of the Principal Chemist of Great Britain for the year ended March 31, 1906 (page 7), 'of the 1,917 samples (of tea) examined, 259 were reported against, chiefly on account of the presence of foreign substances.' It is not impossible that some of these rejected lots might find their way to Canada.

It has not been found necessary in the tabulated statement to employ a column for remarks. The following is a classification of the samples which also gives the districts where they were obtained.

Name of Inspection District.	Genuine.	Doubtful.	Total of Samples.
Nova Scotia	5	0	5
Prince Edward Island.....	2	0	2
New Brunswick	5	0	5
Quebec.....	8	0	8
St. Hyacinthe	8	0	8
Montreal	8	2	10
Ottawa	7	1	8
Kingston	8	0	8
Toronto	9	1	10
London	7	1	8
Manitoba	8	0	8
Calgary	4	0	4
British Columbia	3	2	5
	82	7	89

I have the honour to be, sir,

Your obedient servant,

THOMAS MACFARLANE,

Chief Analyst.

DESCRIPTION OF AND RESULTS OF
DISTRICT OF NOVA SCOTIA

Date of Collection.	Nature of Sample.	Number of Sample.	Name and Address of Vendor.	Cost.		Name and Address of Manufacturer or Furnisher.
				Quality.	Price.	
1906.					cts.	
Aug. 28	Black Tea	27475	J. F. Crowe & Co., Halifax	7 lb.	25	Vim Tea Co., St. John, N.B.
" 28	" "	27478	H. Wentzell & Co., "	7 "	25	Blended by vendor.
" 29	" "	27480	Jas. McGregor "	1 "	40	Bailld Bros. & Co., Halifax.
" 30	Green Tea	27484	Lovitt & Lovitt, Yarmouth, N.S.	1 "	50	W. F. Hatheway, St. John, N.B.
" 31	Black Tea	27488	Cam Bros., Yarmouth, N.S.	7 "	25	T. Wood & Co., Montreal.

DISTRICT OF PRINCE EDWARD ISLAND

Aug. 23	Tea, Black	28320	Sanderson & Co., Charlotte town.	1 lb.	25	Estabrook, St. John, N.B.
" 23	" "	28321	Beer & Goff, Charlottetown.	1 "	25	H. Haszard, Charlottetown P.E.I.

DISTRICT OF NEW BRUNSWICK

Aug. 21	Tea, Black	24265	The Vim Tea Co., Ltd., Ward St., St. John, N.B.	1½ lb.	73	The Vim Tea Co., Ltd., importers, packers and blenders, St. John, N.B.
" 21	" "	24266	J. J. McGaffigan Co., Ltd., 55 Dock St., St. John, N.B.	1½ "	53	J. J. McGaffigan Co., Ltd., blenders and packers, 55 Dock St., St. John, N.B.
" 21	" "	24267	Harry W. DeForrest, 16 Mill St., St. John, N.B.	1½ "	53	Harry W. DeForrest, 16 Mill St., blender and packer, St. John, N.B.
" 22	" "	24268	Maple Leaf Tea Co., 11 Germain St., St. John, N.B.	1½ "	53	Joseph Travers & Sons, London, England.
" 22	" "	24269	T. H. Estabrooks, cor. Mill and North Sts., St. John, N.B.	1½ "	60	T. H. Estabrooks, blender and packer, cor. Mill and North Sts., St. John, N.B.

DISTRICT OF QUEBEC

Aug. 29	Tea, Green	712	Alfred Belodeau, Roberval, Que.	1 lb.	40	Leclerc & Letellier, Que.
" 29	" "	713	Alf. Lalancet, Roberval, Que.	1 "	40	Stroud, Montreal.

EXAMINING 89 SAMPLES OF TEA.

R. J. WAUGH, INSPECTOR.

RESULTS OF ANALYSIS.

Inspector's Report.	ASH				Moisture	Hot Water Extract.	Botanical Examination.
	Total.	Water Soluble.	Acid Soluble.	Acid Insoluble.			
	p. c.	p. c.	p. c.	p. c.			
Sold as Vim tea. Vendor is a wholesale dealer.	6.02	3.56	2.22	0.24	8.20	38.45	Tea leaves: large, broken and stems.
Sold as 'Three Star' brand.	5.62	3.46	2.02	0.14	7.10	36.90	Tea leaves: large, broken and stems.
Sold as Queen brand.	5.48	3.50	1.80	0.18	7.25	33.05	Tea leaves: large, broken and stems.
Vendors are wholesale dealers. Taken from bulk.	5.36	3.02	1.94	0.40	7.35	34.65	Tea leaves, large.
Sold as Coronation brand. Taken from bulk.	5.68	3.02	2.48	0.18	8.25	31.15	Tea leaves very large; broken.

T. MOORE, INSPECTOR.

Red Cross blend	5.54	3.40	2.02	0.12	7.00	32.96	Tea leaves broken with many stems.
Haszards blend.	5.48	3.24	2.08	0.16	7.10	30.50	Tea leaves medium size and broken.

J. C. FERGUSON, INSPECTOR.

Labelled 1/2 lb. 'Vim tea, Indo-Ceylon tea.'	5.68	3.62	1.86	0.20	6.80	36.50	Tea leaves much broken.
Labelled 'Lea Rose blend, India and Ceylon.'	5.40	3.50	1.78	0.12	7.70	30.60	Tea leaves large; broken.
Labelled 'Union blend tea.'	5.54	3.54	1.88	0.12	7.10	32.85	Tea leaves small; broken and with many stems.
Labelled 'Maple Leaf; pure Indo-Ceylon.'	5.64	3.60	1.94	0.10	7.35	30.90	Tea leaves small; broken and stems.
Labelled 'Red Rose tea; pure Indo-Ceylon.'	5.32	3.48	1.66	0.18	7.10	36.40	Tea leaves large and broken, and stems.

C. E. ROY, INSPECTOR.

.....	6.00	3.06	1.94	1.06	7.00	32.80	Tea leaves large.
.....	7.20	3.14	2.76	1.30	8.55	31.80	" and broken.

DESCRIPTION OF AND RESULTS OF
DISTRICT OF QUÉBEC

Date of Collection.	Nature of Sample.	Number of Sample.	Name and Address of Vendor.	Cost.		Name and Address of Manufacturer or Furnisher.
				Quantity.	Price.	
					cts	
Aug. 30	Tea, Green	716	J. T. Laferrière et Cie, Incépl., Que.	1 lb.	30	Côté, Boivin et Cie, Chicoutimi.
" 30.	" Salada Ceylon	718	Haddad & Sawaga, Chicoutimi, Que.	1 "	20	P. C. Larkin & Co., Montreal.
" 31	" Conqueror	720	O. Lévesque Simard, Bagotville, Que.	1 "	40	W. D. Stroud & Sons, Montreal.
" 31	" Ceylon	722	P. Chayer, Bagotville, Que.	1 "	40	N. Turcotte et Cie, Que.
Sept. 11.	" Japan	729	Arthur Onellet, Rimouski, Que.	1 "	40	Turcotte et frere, Que.
" 12.	" Salada	730	ELZ. Bélanger, Ponteau Père, Que.	1 "	50	P. C. Larkin & Co., Montreal.

DISTRICT OF ST. HYACINTHE

Aug. 20.	Green Tea, 'Blue Ribbon.'	460	A. C. Trempe, Sorel	1 lb.	30	The Blue Ribbon Tea Co., Toronto.
" 21.	Green Tea, 'Gun powder.'	461	A. Plante, Berthierville	1 "	20	L. Chaput et fils et Cie, Montreal.
" 21.	Green Tea, Ceylon 'Salada.'	462	T. A. Mercer, L'Épiphanie.	1 "	30	Salada Tea Co., Montreal.
" 21	Green Japanese Tea.	463	C. Barette, Joliette	1 "	35	E. D. Marcou, Montreal.
" 22	Black Tea.	464	E. Benoit, Shawenegan Falls.	1 "	40	Not known.
" 23	"	465	W. E. Chamberland & Co., Grand Mere.	1 "	25	Alf Tyler, London, Ont.
" 23.	"	466	Grenier et Paquin, Grand Mere.	1 "	23	Hudon, Hébert et Cie, Montreal.
" 24	"	467	Poirier et Abran, Three Rivers.	1 "	25	L. Chaput, fils et Cie, Montreal.

DISTRICT OF MONTREAL

Aug. 22.	Black Tea	31501	D. Stroud, 622 Notre Dame West, Montreal.	1 lb.	25	Vendor
" 22.	"	31502	"	1 "	40	"
" 22.	"	31503	S. T. Spindle, 502, Notre Dame West, Montreal.	1 "	40	"
" 23.	Japan Tea	31504	Plouffe et Sirois, 110 St. Lawrence, Montreal.	1 "	30	T. H. Estabrooks, Montreal.
" 24	Green Tea	31505	N. Beaudoin, 687 Mount Royal Ave.	1 "	25	Mathewson & Son, Montreal.

EXAMINING 89 SAMPLES OF TEA—Continued.

C. E. ROY, INSPECTOR—Continued.

Inspector's Report.	RESULTS OF ANALYSIS.						Botanical Examination.
	Ash.						
	Total.	Water Soluble.	Acid Soluble.	Acid Insoluble.	Moisture.	Hot Water Extract.	
.....	6.28	2.92	2.70	0.66	5.95	30.60	Tea leaves large and broken.
.....	4.88	3.12	1.68	0.08	7.10	34.70	Tea leaves small and broken.
.....	5.26	3.46	1.70	0.10	7.50	36.90	Tea leaves broken and some stems.
.....	5.08	3.11	1.84	0.10	6.85	35.10	Tea leaves broken.
.....	5.76	3.24	1.98	0.51	5.85	36.15	"
.....	4.64	2.90	1.64	0.50	7.50	36.40	Tea leaves small and broken.

J. C. ROULEAU, INSPECTOR.

Included in department's samples.	4.74	2.72	2.02	0.20	7.85	35.85	Tea leaves large and broken.
Out of a 30 lb. case.	4.90	2.61	2.14	0.12	7.65	30.85	Tea leaves.
Guaranteed as pure, uncolored by the Salada Tea Co.	4.72	2.96	1.68	0.08	8.10	38.10	Tea leaves large and broken.
Out of a 80 lb. case.	5.74	2.72	2.52	0	7.65	33.20	"
.....	4.84	2.98	0	8.65	33.40	Tea leaves and stems; the former large and broken.
Box marked P. O. T. & Co., London, Pipal-gool 2949.	4.92	3.20	1.72	0.00	8.85	29.15	Tea leaves very large but broken.
Out of a 45 lb. case, marked Horton Ceylon Pekoe, in Montreal.	4.35	3.28	1.17	0.06	8.85	31.25	Tea leaves broken.
Box marked choice, first crop, Packing Concon & Co. Kut Chong.	4.86	3.08	1.60	0.12	8.75	29.30	Tea leaves medium size and broken.

J. J. COSTIGAN, INSPECTOR.

Imported direct by vendor; blended.	1.74	3.02	1.66	0.06	9.20	26.50	Tea leaves and stems; the former broken.
"	4.52	2.96	1.43	0.08	9.50	32.10	Tea leaves broken and many stems.
"	4.52	2.84	1.54	0.14	8.15	33.65	Tea leaves large and broken.
Blended	5.46	3.74	1.44	3.28	7.45	35.25	Tea leaves broken.
.....	5.80	2.32	2.96	0.52	7.40	36.30	"

DESCRIPTION OF AND RESULTS OF
DISTRICT OF MONTREAL

Date of Collection.	Nature of Sample.	Number of Sample.	Name and Address of Vendor.	Cost.		Name and Address of Manufacturer or Furnisher.
				Quantity.	Price.	
1906.						
Aug. 24	Japan Tea	31506	N. Beaudoin, 687 Mount Royal Ave.	1 lb.	20	Kearney Brothers, Montreal.
" 24	Black Tea	31507	J. V. Boudrias, 223 Notre Dame St. East, Montreal.	1 "	25	John Duncan & Co., Montreal.
" 24	Green Tea	31508	" " "	1 "	20	Not known
" 28	Japan Tea	31509	H. F. Barre, 4818 St. Catherine, Maisonneuve.	1 "	25	" "
" 31	"	31510	English Provision Co., 681 St. Catherine West, Montreal.	1 "	40	" "

DISTRICT OF OTTAWA

Sept. 10	Green Tea	29361	Alex. Larose, 128 Queen St. West, Ottawa.	1 lb.	30	Bate & Sons, Ottawa.
" 10	Black Tea	29362	" " " "	1 "	30	" " "
" 10	Green Tea, Ceylon	29365	A. Boivin, 86 Queen St. West, Ottawa.	1 "	40	Anglo-Saxon Tea Co., Ceylon and India.
" 10	Black Salada Tea	29366	" " " "	1 "	50	" " "
" 10	Black Tea, No. 2	29367	Capital Blend Tea Co., 326 Queen St., Ottawa.	1 "	25	Vendors
" 10	No. 02	29368	" " " "	1 "	30	" " "
" 10	Japan Tea No. 2, Green.	29369	" " " "	1 "	25	" " "
" 10	Japan Tea No. 02, Green.	29370	" " " "	1 "	30	" " "

DISTRICT OF KINGSTON

Aug. 21	Black Tea	29481	C. S. Litton, Alfred St., Kingston.	1 lb.	30	Estabrook
" 21	Japan Tea	29482	" " " "	1 "	30	W. G. Craig Co., Kingston.
" 21	Black Tea	29485	W. J. Nesbitt, Johnston St., Kingston.	1 "	40	Robertson & Co., Kingston.
" 21	Japan Tea	29486	" " " "	1 "	30	Reddon, Kingston.
" 21	Black Tea	29488	F. Ostler, Johnston St., Kingston.	1 "	30	W. G. Craig, Kingston.
" 21	Salada Tea	29489	" " " "	1 "	30	" " "
" 21	Japan Tea	29493	F. A. Allan, Alfred St., Kingston.	1 "	30	Will. Gilbreth, Montreal.
" 21	Black Tea	29494	" " " "	1 "	30	Robertson Nicolle, Kingston.

EXAMINING 89 SAMPLES OF TEA—Continued.

J. J. COSTIGAN, INSPECTOR—Concluded.

Inspector's Report.	RESULTS OF ANALYSIS.						Botanical Examination.
	Ash.					Hot Water Extract.	
	Total.	Water Soluble.	Acid Soluble.	Acid Insoluble.	Moisture.		
p. c.	p. c.	p. c.	p. c.	p. c.	p. c.		
.....	4.48	3.24	1.20	0.04	7.70	37.30	Tea leaves broken with a few stems.
.....	5.26	3.16	1.68	0.42	7.95	33.40	Tea leaves broken with many stems.
.....	5.88	2.52	2.60	0.76	7.25	30.05	Tea leaves large and broken with a few stems.
.....	5.26	3.14	1.76	0.36	7.36	31.90	Tea leaves small and broken.
Uncoloured,	5.20	3.28	1.78	0.14	7.00	35.00	Tea leaves small.

A. E. SANDERSON, INSPECTOR.

Labelled 'Tricotta Ceylon; Young-Hyson; bulked.'	5.60	3.00	2.20	0.40	7.70	38.25	Tea leaves broken and many stems.
Labelled 'Blend'	4.54	3.18	1.36	0.00	8.50	34.15	Tea leaves small and broken.
Labelled 'uncoloured Ceylon green.'	5.04	3.14	1.90	0.00	7.00	36.70	Tea leaves broken and many stems.
Labelled 'Salada Ceylon Tea.'	4.68	2.14	2.46	0.08	7.70	31.80	Tea leaves small and broken.
Labelled 'Capital Blend Tea Co.; purity, flavour and excellence guaranteed.'	5.12	3.26	1.86	0.00	7.45	34.15	Tea leaves and stems; the former large and broken.
"	4.68	3.02	1.64	0.32	7.15	35.45	Tea leaves broken.
Labelled 'Capital blend.'	5.20	3.00	2.00	0.20	7.75	36.90	Tea leaves medium size and broken.
"	5.46	3.28	2.18	0.00	7.75	30.40	Tea leaves and stems; the former broken.

J. HOGAN, INSPECTOR.

.....	4.96	3.28	1.68	0.00	8.45	32.80	Tea leaves broken and stems.
.....	5.30	3.46	1.84	0.00	7.50	39.40	"
.....	4.80	3.24	1.56	0.00	8.40	33.05	Tea leaves broken and many stems.
.....	5.60	3.06	2.12	0.42	7.25	36.55	Tea leaves broken.
.....	5.06	3.68	1.32	0.06	7.80	34.40	Tea leaves large; broken.
.....	4.98	2.62	2.16	0.20	7.45	33.75	Tea leaves broken.
.....	5.60	3.62	1.82	0.16	7.45	35.75	Tea leaves large; broken.
.....	4.04	2.88	1.16	0.00	8.65	31.85	Tea leaves broken; many stems.

DESCRIPTION OF AND RESULTS OF
DISTRICT OF TORONTO—

Date of Collection.	Nature of Sample.	Number of Sample.	Name and Address of Vendor.	Cost.		Name and Address of Manufacturer or Furnisher.
				Quantity.	Price.	
1906.					cts.	
Sept. 4.	Ceylon Black Tea	30170	M. E. Goddard, 448 King St., Toronto.	$\frac{1}{2}$ lb.	13	R. B. Hayhoe & Co. wholesale, Toronto.
" 4.	Black Tea	30172	T. Creay, 318 Queen St., Toronto.	$\frac{1}{2}$ "	20	White & Co., wholesale, Toronto.
" 5.	Tea, Young Hyson	30177	A. F. Barker, 302 Yonge St., Toronto.	$\frac{1}{2}$ "	15	Not known
" 5.	India-Ceylon Tea	30180	T. Eaton & Co., Yonge St., Toronto.	1 "	23	Vendors blend the tea themselves.
" 5.	Ceylon Tea, Black	30182	R. Simpson, Yonge St., Toronto.	1 "	25	" " "
" 6.	Lipton's Black and Green Tea, Ceylon.	30183	Kelley Bros., 90 Queen St., Toronto.	$\frac{1}{2}$ "	20	R. Lipton, agent for Thos. Lipton.
" 6.	Blue Ribbon Tea	30185	J. W. Nettleton, cor. Church & Queen Sts., Toronto.	1 "	25	Blue Ribbon Tea Co., Toronto.
" 6.	India Tea	30187	H. McDougall, Toronto.	1 "	25	Vendor
" 6.	Salada Tea	30190	Mrs. R. Davis, 120 York St., Toronto.	$\frac{1}{2}$ "	20	Salada Tea Co., Toronto.
" 6.	Red Rose Tea	30191	Mrs. Crapper, Georges St., Toronto.	$\frac{1}{2}$ "	20	T. H. Estabrook, St. John, N.B.

DISTRICT OF LONDON

Aug. 23.	Gunpowder Tea	30150	Orman & Mallion, Stratford.	$\frac{1}{2}$ lb.	18	Not known
" 23.	Black Tea	30151	Will J. N. Norfolk, Stratford	$\frac{1}{2}$ "	13	McPherson, Glasco & Co., wholesale, Hamilton.
" 24.	Young Hyson Tea	30156	W. J. Cherney, Windsor, Ont.	$\frac{1}{2}$ "	25	Not known
" 24.	India-Ceylon Tea	30157	Fielding & Campead, Windsor, Ont.	1 "	50	T. H. Estabrook, St. John, N.B.
" 21.	Ceylon Tea	30158	Taylor & Williamson, Chatham, Ont.	$\frac{1}{2}$ "	30	S. T. Durand & Co., wholesale, Montreal.
" 24.	Salada Black Tea	30159	William Anderson, Chatham, Ont.	1 "	25	P. C. Larkin & Co., Toronto.
" 25.	India-Ceylon Black Tea	30161	George S. Hayward, Chatham, Ont.	$\frac{1}{2}$ "	25	Vendor
" 28.	China Black Tea	30168	Williams & Purcell, Seaforth, Ont.	$\frac{1}{2}$ "	25	McPherson, Glasco & Co., wholesale, Hamilton.

DISTRICT OF MANITOBA -

Sept. 12.	Tea, Black	25791	K. McKenzie & Co., Winnipeg.	1 lb.	35	Mazawattee Tea Co., London, Eng
" 12.	"	25792	Campbell Bros. & Wilson, Winnipeg.	1 "	35	Packed by vendors

EXAMINING 89 SAMPLES OF TEA—Continued.

T. KIDD, ACTING INSPECTOR.

Inspector's Report.	RESULTS OF ANALYSIS.						Botanical Examination.
	ASH.					Hot Water Extract.	
	Total.	Water Soluble.	Acid Soluble.	Acid Insoluble.	Moisture.		
p. c.	p. c.	p. c.	p. c.	p. c.	p. c.		
.....	4.58	2.76	1.76	0.06	7.65	33.80	Tea leaves large; broken.
.....	4.24	2.80	1.42	0.02	7.80	31.80	" small; broken.
Green, Young-Hyson..	4.92	3.28	1.58	0.06	6.95	35.85	" very small; broken.
.....	5.00	2.98	1.90	0.12	6.75	32.65	" large; broken; a few stems.
Heather brand.....	4.32	2.14	2.18	0.00	7.60	32.85	" large; broken; many stems.
Ceylon, green and black	4.96	2.64	2.24	0.88	7.60	32.70	" broken; stems.
India Ceylon tea; blended black tea.	4.86	2.90	1.78	0.18	7.50	35.30	" large; broken.
Vendor imports and blends himself; called 'Himalagan' tea.	5.24	3.24	2.00	0.00	7.15	34.30	" "
.....	4.66	2.84	1.82	0.00	7.05	37.20	" "
Branded pure India-Ceylon tea; black.	4.30	2.66	1.56	0.08	6.75	35.75	" "

T. KIDD, INSPECTOR.

Gunpowder tea.....	6.36	3.32	2.64	0.40	7.10	33.90	Tea leaves large.
Blended by vendor in Stratford.	5.86	3.90	1.92	0.04	8.05	30.40	" broken.
.....	6.02	3.88	1.88	0.26	6.90	40.50	" small; broken.
Called Red Rose tea.	4.40	2.96	1.44	0.00	7.45	36.00	" broken.
Called Mazawattce Ceylon tea.	4.04	2.64	1.32	0.08	8.25	34.50	" much broken; a few stems.
Called Salada tea.....	4.80	3.04	1.76	0.00	7.60	35.59	" large; broken.
Blended by vendor....	4.10	2.48	1.62	0.00	7.50	33.15	" broken; many stems.
Called China black tea.	4.54	2.80	1.74	0.00	7.65	37.70	" broken; many stems.

W. M. CONKLIN, INSPECTOR.

.....	4.76	2.96	1.72	0.08	7.75	35.55	Tea leaves broken; stems.
.....	4.72	3.30	1.38	0.04	7.75	38.95	" broken; many stems.

DESCRIPTION OF AND RESULTS OF
DISTRICT OF MANITOBA—

Date of Collection.	Nature of Sample.	Number of Sample.	Name and Address of Vendor.	Cost.		Name and Address of Manufacturer or Furnisher.
				Quantity.	Price.	
						cts.
1906.						
Sept. 12.	Tea, Black.	25793	Foley, Lock & Larson, Winnipeg.	1 lb.	25	Packet, by vendors
" 12.	"	25794	Jobin, Marrin & Co., Winnipeg.	1 "	35	Nectar Tea Co., Ceylon.
" 12.	"	25795	The A. Macdonald Co., Winnipeg.	1 "	30	Packed for vendors
" 12.	"	25796	Codville & Co., Winnipeg	1 "	Packed by vendors
" 12.	"	25797	Hicks Bros. & Co., Winnipeg.	1 "	30	Payne & Co., London, Eng.
" 12.	Tea, Ceylon	25798	G. F. & J. Galt, Winnipeg	1 "	35	Blue Ribbon Mfg. Co.

DISTRICT OF CALGARY—

Sept. 12	Tea, Indian.	28692	L. F. Newburn, wholesale, Calgary.	1½ lb.	55	Ram Sals Pure India Tea.
" 12	Tea, Ceylon	28693	G. F. & J. Galt, wholesale, Calgary.	1½ "	45	Put up by vendors.
" 12.	"	28694	Codville, Smith Co., wholesale, Calgary.	1½ "	55	Salada Tea Co., Ltd.
" 12.	"	28695	Campbell, Wilson & Horne, wholesale, Calgary.	1½ "	50	Campbell Bros. & Wilson, Winnipeg, Man.

DISTRICT OF BRITISH COLUMBIA—

Aug. 28.	Black Tea	28173	J. W. Charlesworth, retail, 902 Granville Street, Vancouver, B.C.	1 lb.	25	W. Braid & Co., Vancouver, B.C.
" 29.	"	28174	J. Murchir, Orient Tea Co., Cordora St. West, Vancouver, B.C.	1 "	20	" "
" 29.	Green Tea	28177	Kelly, Douglas & Co., Ltd., wholesale, Vancouver, B.C.	1½ "	45	P. C Lagan, Toronto.
" 29.	Black Tea	28180	J. W. McMillan & Co., wholesale, Vancouver, B.C.	1 "	20	Vendors.
" 30.	Green Tea	28185	Colombo Tea Co., retail, Hastings St., Vancouver, B.C.	1 "	30	Young Bros., Vancouver & Seattle.

EXAMINING 89 SAMPLES OF TEA—*Conclude 1.*W. M. CONKLIN, INSPECTOR—*Concluded*

Inspector's Report.	RESULTS OF ANALYSIS.						Botanical Examination.
	ASH.				Moisture.	Hot Water Extract.	
	Total	Water Soluble.	Acid Soluble.	Acid Insoluble.			
p. c.	p. c.	p. c.	p. c.	p. c.	p. c.		
.....	5.04	2.98	1.88	0.18	7.70	31.65	(Tea) leaves much broken.
.....	4.62	2.76	1.86	0.00	7.75	35.75	" broken.
.....	4.64	3.02	1.62	0.00	7.68	36.20	" much broken ; stems.
.....	5.80	4.12	1.68	0.00	7.55	36.55	" broken ; a few stems.
.....	4.50	3.04	1.46	0.00	7.70	33.25	" broken ; stems.
.....	4.72	3.00	1.50	0.22	7.10	33.35	" small ; broken ; a few stems.

W. FLETCHER, INSPECTOR.

.....	5.70	3.78	1.70	0.22	7.10	36.00	Tea leaves much broken ; stems.
.....	5.06	3.32	1.58	0.16	6.50	34.65	Tea leaves broken ; stems.
.....	4.42	2.90	1.46	0.06	7.75	36.40	" large ; broken.
.....	4.28	2.72	1.50	0.06	7.65	35.60	" much broken ; stems.

E. B. PARKINSON, INSPECTOR.

Star of India Green Label brand. This tea is put up in packages marked W. Tufts & Sons. Vendor having bought the business from them and using their old labels and wrappers. Imported.	5.28	3.18	2.02	0.08	8.20	34.65	Tea leaves broken ; stems.
Vendor did not know the name or brand ; no name or brand on package. Imported.	4.40	3.20	1.14	0.06	7.80	34.85	" ; broken.
Salada brand. Guaranteed pure uncoloured natural leaf Ceylon green and superior to that of finest Japan and has the advantage of being cleanly prepared.	4.16	2.44	1.72	0.00	6.90	42.30	" broken ; many stems.
Imported. Dandie No. 2 brand.	5.06	2.20	2.64	0.22	8.40	32.75	Tea leaves large ; broken stems.
Japan tea. Imported.	5.46	3.90	1.26	0.30	7.85	35.75	Tea leaves broken.

