

MARCH

A UNANIMOUS VOTE

Incorporation Bill Passed and Its Prompt Signature Assured.

WATER AND LIGHT PLANTS

Nelson, Grand Forks and Rossland Authorized to Construct Plants of Their Own Without Acquiring Existing Works—Houston Abused.

VICTORIA, March 2.—[Special.]—The incorporation bill passed its final reading at 4 o'clock this afternoon, after a debate of two hours on the various amendments offered. It was soon shown that the temper of the house was decidedly against making any material changes in the bill as passed by the committee of the whole. The attorney-general called attention to a telegram he had received from citizens of Rossland asking for the shortening of the time of residence provided for candidates for mayor, but this met with no support, the general opinion seeming to be that the time of residence should be lengthened rather than shortened.

The amendment proposed by Rogers, giving the veto power to the lieutenant-governor in council on the expenditure of money, caused a hot fight. The amendment was lost by a good majority and the cities will be left to manage their finances without outside interference.

The amendment proposing that the cities have power to put in electric light systems on the same basis as water systems was adopted without opposition.

The big fight of the day was over the amendment by Rogers providing that before the cities can establish a water system of their own they shall purchase any existing plants. This relates especially to Nelson. Hume led the fight against it and was warmly supported by Kennedy, Turner, Cotton, Kellie and the speaker. Capt. John Irving took the other side and abused John Houston personally but was very much alone.

Telegrams having been received stating that the residents of the Hoover addition of Nelson desired to come within the corporate limits, a change was made including this addition.

Helmcken wanted to provide a property qualification for the elector, but this had no support. Finally, when everything seemed to be out of the way, the speaker put the question on the bill passed by a unanimous vote. This was quickly followed by the passage of a resolution that the lieutenant-governor be requested to come down immediately and sign the bill.

Among those who made special endeavors to get the bill through today, are Premier Turner, Attorney-General Eberis, Mr. Cotton, Mr. Hume and Mr. Kellie. The house adjourned a few minutes after the passage of incorporation bill.

IT WAS WITHDRAWN.

Helmcken's Motion Relative to the Corliss Amendment Debated.

VICTORIA, March 1.—[Special.]—Mr. Helmcken's resolution touching the Corliss amendment came up for consideration today. After an hour's discussion it was withdrawn by the mover.

Helmcken in support of his resolution made a very moderate, conservative speech, urging that the chief purpose of the resolution was to give an expression on the part of this province and indicate to the Dominion government its readiness to cooperate in any reasonable policy which might be adopted towards the United States.

Premier Turner opposed the resolution. He thought it inexpedient and unnecessary to agitate the matter at all for the present. Colonel Baker took the same view. He was glad to recognize the enterprise of Americans in opening up the mining resources of the province. He thought it unwise to adopt or propose any measure at this moment which might retard such development. Indeed it was not yet certain that the Corliss amendment would become a law for President Cleveland had not yet signed the bill.

Booth thought the resolution should even go further. Canada was now able to take care of her mining interests without the aid of Americans.

Kellie Was Babel.

Kellie offered an amendment in which retaliatory measures were proposed and in support he made a very spiteful, ill-natured speech against Americans in general. Kellie's remarks were so extreme that it was at once apparent the house was in no mood to adopt his amendment or even the original resolution.

Semin said the Corliss amendment was unworthy of the American people and ought to be resented by all self-respecting Canadians, but he thought it best to wait and see if the president signed the bill.

Sword's Sensible Talk.

Sword made one of the most sensible speeches of the day. He took the ground that whatever American might do Canada should not be moved by a revengeful or retaliatory sentiment, but take the higher ground and do what was best for the country. His elevated and patriotic remarks evidently found a ready response throughout the house. Helmcken in a few graceful remarks withdrew the resolution.

It came out in what Premier Turner and other prominent members said that while the Corliss amendment is regarded as a very narrow and contemptible piece of legislation and unworthy of the people of the United States, it will be with the greatest reluctance and only when the national honor requires it, that retaliatory measures will be proposed. Premier Turner intimated in his remarks that the American immigration bill would not be signed by President Cleveland. Whether or no

he has had an intimation on the subject is only a matter of conjecture.

Timber For Miners.

Mr. Crossdale, of the Hall Mines, appeared before the mines committee today and urged legislation along the lines of the circular letter recently distributed among the mine owners of Kootenay, his chief contention being that the miner should in all cases, whether on leased, railroad or public lands, be entitled to all the timber he needs for mining purposes. His statement was well received, and I have no doubt his recommendations will in the be complied with.

New Bills Introduced.

A large number of bills were introduced this afternoon. Among them are acts to incorporate the Stikine & Teslin Railway, Navigation and Colonization company, the Cassiar Railway company, Grand Forks Water, Power and Light company, Greenwood City Waterworks company, East Kootenay Railway company (to run from Fort St. John, British Columbia, to Ashcroft & Cariboo Railway), company, Vancouver & Nanaimo Railway and Transfer company, Vancouver, Victoria & Eastern Railway and Navigation company, British Columbia Power and Light company (Norman's company) to develop a water power on the Grand d'Oreille river for electrical power purposes.

The Incorporation Bill.

Just as the house reached the consideration of the act for the incorporation of Rossland, Nelson and Grand Forks adjournment was moved till tomorrow. John Houston, of Nelson, makes this statement with reference to the amendment offered by Mr. Rogers, obliging cities to purchase existing water plants before appropriating water for public uses: "The delegation from Nelson favors placing their town in a position to put in its own waterworks, mainly because the company owning the waterworks now at Nelson has refused to put in an adequate system." J. R. K.

LE ROIS'S NEW PLANT.

The Tramway Is Working Well—Hoisting Machinery Going Up Now.

The shipments from the Le Roi during the week showed a large increase. The previous week the total shipments were but 571 tons, while last week 598 tons were shipped to Trail alone, and 386 tons to other smelters. That the latter shipments are not larger is due to the change from teaming to the tram, and the fact that the tram is not yet in a condition to do its best. Captain Hall was yesterday rigging a semaphore and a signal bell on it, which conveniences will somewhat expedite matters, and he has ordered a number of new skips. At present it runs across the Columbia & Western tracks to the old bins. The compressor engines have been running all week, and some time this week the compressor itself will be coupled up and air pumped into the mine. The hoisting machine will be in order by the time the new drills are steadily at work. Captain Hall has been waiting for hoisting skips, and learned yesterday that they were at Trail. They will be brought up today.

The main shaft is now down 90 feet below the 500-foot level, and the ore being taken out is remarkably fine.

WORK ON THE CLIFF.

Connection Between Its Two Tunnels Will Be Made Shortly.

The lower tunnel of the Cliff Monday reached the point at which it is expected to make the upraise to the mine from the upper tunnel. This lower tunnel is 250 feet long.

Work on the upper tunnel has also been continued, and it is now 350 feet in and 150 feet from the surface. Some time ago a fault was encountered, but ten days ago they began to make ore again in good shape, and this has continued, showing that the fault was only local. The ore for the past few days has run very even, assaying about \$28 per ton. The compressor broke down early in the year, and all late development work has been done by hand, as being, under the circumstances, more economical.

The Cliff has been shipping about a car per week for the past month, but when the connection between the two tunnels is made and other necessary work done, the mine will place itself on the list of regular shippers.

San Francisco Mine.

We learn from Mr. Smith Curtis, local agent for the San Francisco company, that work is progressing favorably on its property, which adjoins the California, the St. Paul and the White Bear. Last October crosscuts were made on a well defined ledge on this property, just west of the Red Mountain railway line, so as to determine its exact direction. Then a tunnel was started in a valley between the crosscuts and run into the hillside for the purpose of crosscutting the ledge, and this tunnel is now in 150 feet and the vein will shortly be reached. The vein appears to be a continuation of the one upon which the White Bear recently made its strike, the White Bear shaft being about 150 to 200 feet from the San Francisco line. The tunnel of the San Francisco is about 350 feet from the White Bear shaft. The ledge matter now coming out of this tunnel is the best ever got in it, and is identical in character with the ledge matter found within a few feet of the strike made upon the White Bear.

Mill Test For the Bruce.

A. N. Paterson and A. S. Goodvee made a trip Monday to the Norway mine near Trail, which belongs to the Bruce Gold Mining company. Two men are at work driving on the vein, the tunnel now being in 70 feet. The vein is about two feet wide on the average. The ore shows much free gold and about 60 tons of ore are on the dump. A small lot will be sent to the Trail smelter for a mill test.

C. O'BRIEN REDDIN, President. C. F. JACKSON, Secretary-Treasurer.

THE REDDIN-JACKSON CO.,

LIMITED LIABILITY.

MINING AND INVESTMENT BROKERS.

TO INVESTORS. Write us if you desire to invest in Rossland, the greatest gold camp in the world. We are on the spot and will fill your orders or invest your money to the best advantage. We handle mines, stocks and real estate and are agents for Rossland townsite and the railway addition to Rossland.

We have invested many thousands of dollars for our clients. We are the recognized financial agents and investment brokers. Write any bank or commercial firm in Rossland for our rating and standing. We are the pioneer investment brokers of Rossland and our experience is at the service of our clients. We have no property of our own to sell nor no mining schemes to promote. We do a legitimate brokerage business for our clients and make them money. Our commission gives us sufficient profit. You have no commission to pay. The seller pays us.

WRITE US if you doubt the wisdom of investing in Rossland securities. State plainly what particular information you want and we will gladly answer you queries. Many people think that to invest in mines is to gamble. This is a fallacy. Mines and mining stocks are a legitimate investment if the same care and judgment be used as in other financial transactions. If you have no practical experience we have. Mining is our business. Our experience we place at your disposal and we request that you will open up correspondence with us.

The Reddin-Jackson Co., Ltd.

P. O. Box 397, Rossland, B. C.

COL. SCOTT IS BACK

Ready to Go Into a Fight for the Mayoralty.

STEPS TO BE TAKEN NEXT

Election Must Be Held One Month From the Date of the Lieut.-Governor's Signature to the Bill—What the Council Should Do.

Col. Robert Scott has returned from Victoria, looking very happy over the passage of the bill to incorporate Rossland, and "fit," as the sports would say, to make the fight of his life for the mayoralty. When asked in his office yesterday if he might be announced as a candidate he put on the most diplomatic air of which his frank face is capable and tried to avoid a direct answer. When the direct question was put as to whether he was or was not a candidate, he said: "Well, quite a number of people are talking about it." "What about your fight for the Rossland bill in Victoria, colonel?" "We had no fight. Everything passed smoothly with the exception of the water question, and that really did not affect us. You see in the first place Nelson, Grand Forks and Rossland drafted separate bills for incorporation. Grand Forks had the qualification for mayor \$5,000 of real estate, and one year's residence; Nelson, \$1,000 property qualification and one year's residence. Our bill was much more liberal, namely, \$1,000, and three months' residence. We got the other two towns to accept our bill.

The Nelson Water Amendment. "The only changes made by the legislature were the addition of a water clause as an amendment, offered by J. Fred Hume, and the putting in by the government of a clause relating to the taxation of mines. It was upon the first of these that the objection was raised to the passage of the bill. This water clause read as follows: "It shall be lawful for the said cities, and they hereby empowered at any time hereafter to make and divert for any stream or streams as may be found most suitable, and to appropriate or use sufficient unappropriated water for all public purposes of the said municipalities, and from time to time to construct all works that may be necessary for efficiently using such water, and to erect dams, raceways, and works of such nature, and to exercise all the power mentioned in the Water Rights Act, 1892."

The Government's Amendment. "The objection to this," continued Col. Scott, "did not come from Rossland but from the present owners of the water supply at Nelson. The government amendment relative to the taxation of mines exempts all mines within corporate limits from taxation. "This, of course, is only a temporary measure. The question at issue is one that is engaging the attention of the whole of the people of the province. As it stands now man locates a claim and gets title, but he doesn't own the land; and the government does not get any taxes from it, nor does the municipality, although the land in question is in the municipality. It is unsatisfactory all around."

Election of the Council. "What will be the next steps, and how long will they take?" "The bill will go to the lieutenant-governor for his signature and it may be several days before he signs it. One month from the date of his signature the first municipal election must be held. "The first steps will be the preparation of a voters' list. This will be done by a returning officer to be appointed by the lieutenant-governor, who will open books of registration as soon as possible and keep them open until the day before the election. "And who do you think will be elected mayor?" "This was another way of getting an expression from the colonel on the mayoralty question, but he merely answered: "I have not heard if there are any candidates for the office up to the present."

The Council's First Work. "After the election I recognize the fact that the immediate necessity of the new city is a system of sewerage. The public health should be the first thought, and the importance of immediate steps is painfully apparent. Then we must have additional fire apparatus, and fire buildings, and first-class protection from fire. Then our streets must be put in order at once, and that will cost a goodly sum. "All out of \$50,000?" "Yes, all out of \$50,000. It should have been \$100,000, for we will need it. We ought to spend at once \$25,000 on a sewerage system, to meet present requirements. That would put in a sewer system for Columbia avenue, Spokane, Washington, Lincoln and St. Paul streets, where sewers are now so urgently needed. This would be the beginning of a system to which we could add later on."

A Question of Finances. "When might the new council have money to handle?" "Well, it would not take long to get the debentures, but it might take a month, perhaps two months, to sell them. In eastern Canada they sell at a trifle under five per cent, but being a new town, we might have to pay more, in "This would be all the money the city would have until the end of the fiscal year, when the government would remit a proportion of the taxes collected, which I think in this case would be about three-fourths. I think the assessment will run up to \$2,000,000, but the rate of taxation will have to be decided by the council. "We might, of course, borrow an additional sum to the \$50,000, but to do this the question would have to be submitted to a vote of the people."

Giant to Ship. A letter from Manager Rust of the Tacoma smelter, who is largely interested in the Giant company, states that he has sent instructions to the mine superintendent to ship a carload from the Giant at once. This will be the first shipment from the Giant, and will be more with an object of making a test of the ore than anything else. The mine is looking well at present, and has a lot of shipping ore in sight.

HOW TO GET RICH.

Go to some hard headed business man, who has no theories, but knows how to make money. Say to him: "Here is a little village; in five years it will be a great city; in five years the railroad will have taken the place of the stage coach, the electric light of the candle; it will abound with all the machinery and improvements that so enormously multiply the effective pound of labor. Will in five years interest be any higher?" He will tell you, "No!" "Will wages be any higher?" Will it be easier for a man who has nothing but his labor to make an independent living?" "He will tell you: "No, the chances are that it will be harder."

"What then, will be higher?" "Rent; the value of land. Go get yourself a piece of ground and hold possession."

And if, under such circumstances, you take his advice, you need do nothing more. You may sit down and smoke your pipe, you may lie around like the lazzaroni of Naples or the lepers of Mexico; you may go up in a balloon, or down into a hole in the ground; and without doing one stroke of work, without adding one iota to the wealth of the community, in five years you will be rich!

This is from the pen of a master writer on political economy. Its application comes home in Rossland. A year ago lots that could be bought for \$200, today are worth \$2,000.

The hillside where in the summer of '96 you picketed your broncho, today is a teeming ant hill of industry.

The mine that today is paying half a million dollars in dividends, two years ago was a problematical prospect.

The freight teams that a year ago hauled ore to Northport, are today pushed off the trail by the iron horse of commerce.

Its coming, not slowly, but with a speed only equalled in Johannesburg.

While there is not a single lot in Rossland but what is sure to advance, there are PICKED locations that of a necessity will increase in value more rapidly than others. We have culled the following list and ask your perusal:

\$200 Fine residence lot in best part of town. Excellent drainage, beautiful view.

\$600 Corner lot and cozy cottage, best street in the city. Centrally located. Pays 40 per cent rent on the investment.

\$1000 Business lot and building on Columbia Avenue pays at present 30 per cent. rent on investment.

\$2000 Two of the finest business lots in Rossland. Heart of trade.

\$10,000 One of the best hotels in the city with lot that alone is worth the purchase price. Pays \$2400 a year in rent.

\$20,000 The best three story building, and finest corner in the city. Rents \$5,400 annually. At 6 per cent. pays dividends on \$140,000.

We have all the best property in Rossland, Trail, Sandon, Kaslo, and neighboring towns. Also all the reliable mining stocks.

QUAW-GERLICH CO.,

Rossland, B. C.

SHOULD B...

The New Compan...

Pernicious

ON THE WRO...

It Would Result in...

corporations and...

vestments—Jumb...

tions and Restr...

ERROR MENS—Sirt...

legislation of this...

the incorporation and...

repealed," proposes to dea...

vital importance that a...

subject may be opportu...

ing to the public.

The inception of ju...

was owing to the di...

of the power of a...

that time the ques...

a special protective...

such powers and priv...

the crown considered e...

were willing to pay fo...

stance. The success of...

to a rapid increase in...

length practical advan...

In time some degree...

of chaos; improvement...

amongst others, the r...

remaining unpaid upon...

to transact legitimate...

dividuals capable of co...

creatures of the legisla...

no existence beyond the...

by statute.

Law Shoul...

It is, therefore, impo...

corporations and those...

officers of them should b...

in no vague or uncer...

ture in our case. It...

however, the utmost ca...

prescribe regulations th...

degree hamper the form...

interfere with the cond...

general power, which sh...

such act, to transact a...

scope of the company's...

ways as ordinary indivi...

railway steamship and...

that encircle the globe...

natural resources and h...

years and the produc...

wealth, freight and h...

development and progr...

later part of the mine...

largely ascribed to the...

of capital through the...

A glance...

Even as the whirling...

recession of the wind, so...

ful development of any...

of the careful observer...

such effects. In no pe...

United States. Knowin...

ital poured into the m...

sources and increased...

through the medium of...

out that country, wher...

expensive methods are...

which persons wishing...

tion of any undertaking...

mediately the most ph...

gress rendered it impo...

The Underly...

the subject in nearly a...

and liberal one; that e...

of his own business, an...

hindered from using t...

investments. His is th...

In the regulation of t...

that has been guarant...

self interest of those i...

States, Illinois has be...

for prominent progres...

men in active busines...

transformed from a s...

world's greatest manuf...

wealth, were largely i...

effort, and the simple...

for securing incorporat...

ered as one of the main...

necessary capital to c...

enormous business of t...

tracted from abroad.

Ontario at one time li...

liberal, enlightened li...

Capital Shou...

Conditions, very str...

ved in Illinois and...

years ago, now prevail...

wealth of British Col...

and economic miner...

industries. Nowhere o...

tively demonstrated th...

treasure vaults of this...

operated available by...

To attract it men...

reach of the land, and...

to furnish remunerat...

make the rugged...

the hour of machinery...

into happy homes.

The hour of British...

tion, carefully repres...

are equal to the occas...

facts before us, and...

reasonable to expect...

to hamper the forma...

shape formulas for the...

share, or to tax them f...

be put forth to furth...

provinces and to simp...

indispensable.

English Prece...

The circumstances...

Canada, are not anal...

tain in England. It...

applicable. The mo...

consequence as in a...

of business is slower...

consequence as in a...

with a rush or a...

The directors, as a...

share, especially in t...

freely, but in the off...

the other hand, real...

ful, and the most sa...

tion, usually manag...

the largest interest i...

have everything to lo...

depreciation. It is...

abuses and evasions...

time, but in the off...

possible, it is surely...

such cumbersome a...

dictory language sh...

responsibilities, att...

ment, especially in s...

while endeavoring...

puddle of illegality...

provinces and the pr...

vestors may be sunk...

delay and doubt.

The Mea...

Bearing in mind a...

well-known serious...

sweeping changes i...

takings in operati...

offer merely a ques...

skill) I may truly...

containing 250 imp...

more sections whic...

of copies of my notit...

and 12 pages of sc...

serviced, is not a p...

population in the p...

to be gone. Assumi...

and contradictions i...

of the mine. This m...

less presents many...

lent it is to be hop...

comment.

In place of a more...

ment mode of oper...

flower, more exp...

contemplated. Th...

of restriction, bet...

numerous, and so...

be required to int...

possibly by the cour...

Some Obj...

The promoters...

jected to star chan...

viction, upon com...

tax is virtually...

Weekly Rossland Miner.

Published Every Thursday by the ROSSLAND MINER PRINTING & PUBLISHING CO. LIMITED LIABILITY.

JOHN R. REAVIS, President. H. W. C. JACKSON, Editor and Manager.

LONDON OFFICE: C. J. WALKER, 105 Bishopsgate St., Within E. C.

MONTREAL OFFICE: JOHN STOWELL EVANS.

TORONTO OFFICE: CENTRAL PRESS AGENCY, LTD., 53 Yonge St.

SPOKANE OFFICE: ALEXANDER & CO., Advertising Agents, Room 51, First National Bank Building.

TRAVELLING AGENTS: With the exception of the above, C. H. MARSH, CHARLES H. LAMB, P. H. CONNELL and L. N. HAK, court travelling agents, are the only persons authorized to make adverting contracts or collect for subscriptions.

THE SUBSCRIPTION PRICE OF THE WEEKLY ROSSLAND MINER for all points in the United States and Canada is Two Dollars a year or One Dollar and Twenty-five Cents for six months...

Shipments of Ore.

From January 1 to February 25 inclusive the shipments of ore from mines at Rossland to smelters were as follows:

Table with columns: Mine, Tons. Includes entries for Le Sol, War Eagle, Columbia & Kootenay, Iron Mask, Jumbo, Cliff, Red Mountain, O. K., Total, Concentrates, and Shipments for the past week.

CITY OF ROSSLAND.

The bill for the incorporation of Nelson, Grand Forks and Rossland has passed the house and only needs the signature of the lieutenant-governor to become a law.

As regards Rossland, incorporation has not come a minute too soon. The community has some serious problems to face.

MR. SWORD IS RIGHT. It is not retaliation we should be thinking about but the good of the country.

PREMIER TURNER and Colonel Baker have handled one or two difficult questions which have already arisen this session with a great deal of tact.

A CLOSE study of the new companies act would give one the impression that it was conceived especially with the view to discouraging outside capital to invest in British Columbia.

THE rights of minority stockholders and the interests of the province could surely be conserved by a much simpler measure than the new Companies act.

NELSON and Grand Forks are equally to be congratulated with Rossland on the passage of the incorporation bill.

J. M. KELLIE'S constituency has outgrown him several times, largely owing to the influx of Americans.

J. M. KELLIE, M. P., is quoted as saying he had a petition or resolution from the Rossland board of trade in favor of the ten per cent clause in the new Companies act.

THE new companies act should be killed. We have been too busy, in common with most other citizens of Rossland, to give the measure the attention it deserves.

WHERE the Companies act to become a law it would be a serious blow to the mining industry of the province.

TUESDAY was a rapid letter day for Rossland. The passing of the incorporation bill would in itself have made it a notable date in its history...

WE desire to warn the legislature of this province before it is too late that the new Companies act is a serious menace to our prosperity...

ROSSLAND'S choice for a mayor will be restricted to a very few individuals if the bill goes through without amendment...

THE question as to what constitutes the floating element of Rossland's population was generally debated on Sunday and yesterday.

THE Crow's Nest Pass railway should be built by the government and it should be built at once.

THE mayorality contest in Rossland will be an interesting one. C. O. Lalonde, as indicated by the signatures to the petition...

ROSSLAND has expressed its opinion of the Companies act, and as Rossland is the centre of the mining industry in the province...

THERE are entirely too many beggars on the streets of Rossland. The police are not doing their duty or they would rid the town of about 20 professional mendicants...

SOME organization should be effected here to secure labor, if possible, for the honest working men who have come here in search of a job.

IF the legislature will pass an intelligent and reasonable companies act it will come more nearly satisfying the wants of the people of Kootenay at this session than it has ever done in the past.

SO far the public seems to have given most of its attention to the contest for the mayorality. It is just as important that the city should have a good board of aldermen.

ACCIDENT IN THE BIG BEND. Miner at the Orphan Boy Killed While Throwing Out Powder.

KOOTENAY MAIL: Last Thursday at about 11:30 a. m., a sad accident, resulting in the death of Al. Fournier, miner, occurred at the Orphan Boy.

THE new companies act should be killed. We have been too busy, in common with most other citizens of Rossland, to give the measure the attention it deserves.

WHERE the Companies act to become a law it would be a serious blow to the mining industry of the province.

THE rights of minority stockholders and the interests of the province could surely be conserved by a much simpler measure than the new Companies act.

MR. SWORD IS RIGHT. It is not retaliation we should be thinking about but the good of the country.

SLOAN NEWS NOTES.

New Denver Lodge: The Noble Five group have 10,000 tons on the dump. Ore from the Bonanza King to the value of \$130,000 has been sent to the smelters.

A good strike of ruby silver ore was made on the Fisher Mill on Tuesday. Work on the Jennie Lind and Wakefield has been stopped until the season of silver fever.

The Vancouver Group Mining company, limited, has purchased the Vancouver No. 2 for \$60,000, and will begin early operations.

The Maine, on the First North Fork of this province before it is too late that the new Companies act is a serious menace to our prosperity...

E. J. Field has bought of Hugh and Alexander R. Mann, for \$4,000, the above the Wonderful Group.

T. D. Woodcock has bought from D. E. Ruffus his one-third interest in the Vancouver on Lemon creek. A recent assay on this ore shows it to be rich in gold.

G. Geo. Leslie, of Toronto, has lately bought an interest in the Red Fox and two-thirds in the Central Fraxion for \$5,000. These claims are situated in Surprise basin.

The Sunshine Mining Co., Ltd., has completed a deal by which the Yakima, completed Monday, Oregon and Mine claims will be developed and thoroughly mined.

C. L. Caldwell has a bond on the Carbonate, situated at the head of Springer creek. This was formerly bonded by G. A. Finch, who threw it over on the discovery of some more promising properties.

Development work on the Lone Star is being pushed ahead steadily by the Hanson mining company. Since November the tunnel has been driven in 287 feet.

A rich strike was made Tuesday on the Edmonton group, Ten Mile. A large haul of ore was struck in the ledge upon which they have been working for some time, bearing great quantities of native silver.

THE Crow's Nest Pass railway should be built by the government and it should be built at once. If, however, the government cannot see its way to build the road itself this season and can make an arrangement with the C. P. R. for government control of freight rates...

THE mayorality contest in Rossland will be an interesting one. C. O. Lalonde, as indicated by the signatures to the petition requesting him to run, is evidently the choice of the older residents.

ROSSLAND has expressed its opinion of the Companies act, and as Rossland is the centre of the mining industry in the province and the headquarters of a very large number of incorporated companies...

THERE are entirely too many beggars on the streets of Rossland. The police are not doing their duty or they would rid the town of about 20 professional mendicants in the next week or ten days.

SOME organization should be effected here to secure labor, if possible, for the honest working men who have come here in search of a job. The same organization might also do much to assist the police to keep the town moderately clear of hobos.

IF the legislature will pass an intelligent and reasonable companies act it will come more nearly satisfying the wants of the people of Kootenay at this session than it has ever done in the past.

ney throughout the northwest, and has the reputation of being one of the best mining attorneys in this section. For 10 years he has been practicing in the courts of Cour d'Alone, and in the courts of Spokane, and in all of the federal courts. It is not known what his chances with Mr. McKinley will be, except that he will have the support of Senator Shoup of Idaho.

British American Mining Company. The first regular meeting of the British American Gold Mining company was held last night at the office of Good, Clark & Co., when the following officers were elected: President, R. L. Murchison, advocate, Montreal; vice-president, Alex. Wilson, Rossland; H. A. Wilder and R. J. Latimer, Montreal; Treasurer, James A. Gowd and Ucal H. Danderand; secretaries, James H. Good and J. Rowat Fair; mining superintendent, Isaac Yipond. This company has acquired a number of claims near Nelson, namely the Copper King, Diamond King and Blue Jay. Samples of ore from the Copper King were shown, which indicate that the company has an excellent property.

Certificate of Improvements. NOTICE. Richmond mineral claim situated in the Trail creek mining division of West Kootenay district, British Columbia. Located on Deer Park mountain, west and north of and adjoining the Lily May mineral claim.

Certificate of Improvements. NOTICE. June mineral claim situated in the Trail Creek mining division of West Kootenay district, British Columbia. Located on the north and west of the above claim.

Application for Liquor License. I hereby give notice that 30 days after the date hereof, I intend to apply to the stipendiary magistrate for a license to sell wines, beers and spirits in the town of Rossland, in the county of Kootenay, in the province of British Columbia.

Certificate of Improvements. NOTICE. Rgo mineral claim, situated in the Trail creek mining division of West Kootenay district, British Columbia. Located on the north and west of the above claim.

Certificate of Improvements. NOTICE. C. R. & O. mineral claim, situated in the Trail Creek mining division of West Kootenay district, British Columbia. Located on the north and west of the above claim.

NOTICE TO STOCKHOLDERS. The first general meeting of the stockholders of the Rossland Gold Mining Company will be held at the office of the company in the city of Rossland, British Columbia, on Tuesday, March 10th, 1897.

NOTICE. The first annual meeting of the stockholders of the Yale Gold-Copper Mining company will be held at the office of the company at Rossland, B. C., on Saturday, March 13th, 1897.

Certificate of Improvements. NOTICE. Black Rock mineral claim, situated in the Trail Creek mining division of West Kootenay district, British Columbia. Located on the north and west of the above claim.

Certificate of Improvements. NOTICE. Gray Copper, Blue Copper, Copper Giant mineral claims, situated in the Trail Creek mining division of West Kootenay district, British Columbia. Located on the north and west of the above claim.

Certificate of Improvements. NOTICE. Little Darling mineral claim, situated in the Trail Creek mining division of West Kootenay district, British Columbia. Located on the north and west of the above claim.

Certificate of Improvements. NOTICE. Ottawa No. 1 mineral claim situated in the Trail Creek mining division of West Kootenay district, British Columbia. Located on the north and west of the above claim.

Certificate of Improvements. NOTICE. Harrisburg mineral claim situated in the Trail Creek mining division of West Kootenay district, British Columbia. Located on the north and west of the above claim.

Certificate of Improvements. NOTICE. White Elephant Fraction mineral claim situated in the Trail Creek mining division of West Kootenay district, British Columbia. Located on the north and west of the above claim.

NOTICE OF STOCKHOLDERS MEETING. The first annual meeting of the stockholders of the Rossland Gold Mining Company will be held at the office of the company in the city of Rossland, British Columbia, on Tuesday, March 10th, 1897.

THE GROUP GOLD MINING COMPANY, OF ROSSLAND.

Six full claims seven miles from Rossland, on the Murphy and Sheep Creek divide. Capital 1,500,000 Shares. \$1.00 Each. Treasury Stock 350,000 Shares.

Certificate of Improvements. NOTICE. Isabella No. 2 mineral claim, situated in the Trail Creek mining division of West Kootenay district, British Columbia. Located on the north and west of the above claim.

Certificate of Improvements. NOTICE. Venus Fraction mineral claim situated in the Trail Creek mining division of West Kootenay district, British Columbia. Located on the north and west of the above claim.

Certificate of Improvements. NOTICE. Elba mineral claim, situated in the Trail Creek mining division of West Kootenay district, British Columbia. Located on the north and west of the above claim.

Certificate of Improvements. NOTICE. Celia, Excelsior and Enterprise mineral claims situated in the Trail Creek mining division of West Kootenay district, British Columbia. Located on the north and west of the above claim.

Certificate of Improvements. NOTICE. Tal mineral claim, situated in the Trail Creek mining division of West Kootenay district, British Columbia. Located on the north and west of the above claim.

Certificate of Improvements. NOTICE. Gray Copper, Blue Copper, Copper Giant mineral claims, situated in the Trail Creek mining division of West Kootenay district, British Columbia. Located on the north and west of the above claim.

Certificate of Improvements. NOTICE. Little Darling mineral claim, situated in the Trail Creek mining division of West Kootenay district, British Columbia. Located on the north and west of the above claim.

Certificate of Improvements. NOTICE. Ottawa No. 1 mineral claim situated in the Trail Creek mining division of West Kootenay district, British Columbia. Located on the north and west of the above claim.

Certificate of Improvements. NOTICE. Harrisburg mineral claim situated in the Trail Creek mining division of West Kootenay district, British Columbia. Located on the north and west of the above claim.

Certificate of Improvements. NOTICE. White Elephant Fraction mineral claim situated in the Trail Creek mining division of West Kootenay district, British Columbia. Located on the north and west of the above claim.

Certificate of Improvements. NOTICE. Volney mineral claim situated in the Trail Creek mining division of West Kootenay district, British Columbia. Located on the north and west of the above claim.

Certificate of Improvements. NOTICE. Volney mineral claim situated in the Trail Creek mining division of West Kootenay district, British Columbia. Located on the north and west of the above claim.

Certificate of Improvements. NOTICE. Volney mineral claim situated in the Trail Creek mining division of West Kootenay district, British Columbia. Located on the north and west of the above claim.

Certificate of Improvements. NOTICE. Volney mineral claim situated in the Trail Creek mining division of West Kootenay district, British Columbia. Located on the north and west of the above claim.

WATER PO

Eberts Will Have Few OBJECT OF

It is Intended to situate of Water Who Will Utilize Quarts Mines.

VICTORIA, March 3.—The short session of the government is being measures for con-

Dr. Walkem told to press an amendment providing that shall be employed will probably meet position.

President Cleveland bill an huge great success.

Among the rest Holt of Toronto, last summer from London.

The Parliament to look after the comes up for arg-

States Paymaster was missing from Saturday, was a

They "ran down" in Montreal.

CHICAGO, March tomorrow will men had something to speculate on to that a detective

THOSE 500 men had something to speculate on to that a detective

SPAIN'S Her Peasantry ting to B

LONDON, Mar Daily Mail from distress which provinces amon

There is likely to Brazil districts.

There is likely to Brazil districts.

WATER POWER BILL

Eberts Will Have It Ready in a Few Days.

OBJECT OF THE MEASURE

It is Intended to Enable the Acquisition of Water Powers by Anyone Who Will Utilize Them—Chinese in Quartz Mines.

VICTORIA, March 3.—[Special.]—A very short session of the house was held today and nothing of importance done. The government is behind in bringing in measures for consideration, and Mr. Eberts is busy preparing his water power bill, which will probably be ready in two or three days. This bill is the result of the discussion on the water question last week. It will attempt to deal with the question in a broad and equitable manner.

From what I can gather I think it will permit anybody to take water power who wants it, under certain restrictions, but power taken must be actually used, and no more can be taken than is used. In other words, water powers can not be tied up for speculative purposes. Some of the companies making application for water power are ready to go to work at once, and as soon as they are permitted to do so they will be heard from.

To Exclude Chinese. Dr. Walkem told me today he intended to press an amendment to the mining laws providing that no Chinese labor shall be employed in quartz mines. It will probably meet with no serious opposition. The people here in Victoria seem to be very sick of Chinese labor, and there will be a strong move to have the Chinese head tax increased to \$500, which would amount to a prohibition of further immigration.

President Cleveland's veto of the immigration bill and accompanying messages gave great satisfaction here. Among the recent arrivals are T. E. Holt of Toronto, who was in Rossland last summer and who has just come from London. He represents an English company and will soon go to Kootenay. Paul Gaston has arrived and gives a glowing account of a great copper discovery. Other arrivals are George Alexander of Kaslo and C. D. Rand of Sandon. Chester Glass will leave for Spokane and John Houston for Nelson tomorrow.

The Paris Belle Case. I. W. Witherop is here from Spokane to look after the Paris Belle case, which comes up for argument before the supreme court tomorrow or next day. George McAulay told me before he left here a few days ago that he had sold out all his holdings in the Cariboo company to M. M. Cowley of Spokane and some friends. McAulay says he has himself only 300 shares and that Cowley and his friends hold over 400,000 shares.

CORWINE CAUGHT.

Absconding United States Paymaster Caught at Chicago. NEWPORT, R. I., March 3.—United States Paymaster Corwine, who has been missing from the city since last Saturday, was arrested tonight as he was entering the Palmer house in Chicago, according to a telegram received here tonight from the chief of police of that city. On Monday last Paymaster Corwine visited the First National bank of Newport and cashed a check for \$5,000, payable at the sub-treasury at Boston. But the payment has been stopped and the bank will lose the money it advanced. Corwine left the city at 3 o'clock in the afternoon. When searched \$3,000 out of the \$5,000 he secured on the check was recovered.

THESE SMART SLEUTHS.

They "Ran Down" Mr. Bonquet, the Montreal Bank Cashier. CHICAGO, March 3.—The Times-Herald tomorrow will say: "The board of trade men had something else besides wheat to speculate on today, when they learned that a detective agency had succeeded in locating J. S. Bonquet of Montreal, who was charged with wrecking that institution several years ago. Mr. Bonquet, according to a Montreal dispatch, had been discovered in Chicago doing business as a broker and enjoying life with his family like many another man. But it struck the traders as rather strange that the detective agency had experienced any difficulty in finding Mr. Bonquet. He is one of the well-known members of the board and has been doing an extensive commission business for a long time in Chicago. Mr. Bonquet, it seems, has never made any secret of the way that he once lived in Montreal, or that he was connected with the Banque Du Peuple, cashier with the Banque Du Peuple, which went under through mismanagement. How the detectives missed finding him all this time, and why they should have been looking for him at all, is more than Mr. Bonquet's acquaintances can understand."

SPAIN'S LOCAL TROUBLES.

Her Peasantry Starving and Emigrating to Brazil by Wholesale. LONDON, March 4.—A dispatch to the Daily Mail from Madrid says that the distress which exists in nearly all the provinces among the peasantry continues to increase. In Aragon the peasants have become so violent, in consequence of the privations, that the military is obliged to exert the tax gatherers. There is likely to be a wholesale emigration to Brazil from the famine stricken districts.

BOHE WILL BE HANGED.

The Cabinet Considers Two Murder Cases Upon Appeal.

OTTAWA, Ont., March 3.—The cabinet yesterday considered the evidence in the two capital offense cases, as presented in the report of the minister of justice, and their decision in both instances was that the law be allowed to take its course. The first case was that of the Indian Charcoal, or Bad Young Man, who last summer committed murder in his own tribe, and while being pursued by the mounted police shot and killed Sergeant Wilde. He was sentenced to hang on the 12th inst., but, as in the case of the present day, influence was brought to bear to have executive clemency extended to him. But Charcoal will have to suffer the penalty for his crimes, which are reported to have been quite numerous even before he attempted the final deed of bloodshed. The second case has been before the department of justice for some time, and was that of Sullivan, of Moncton, who was convicted of murdering a woman named Dutcher for plunder. This execution is fixed for the 16th inst.

AFTER F. LEWIS CLARKE

Who is Gone to New York to Float Rossland Properties.

Comptroller Eckels is Not Satisfied With Receivership of Spokane's First National Bank. WARDNER, Idaho, March 2.—[Special.]—Frank Adams, bank examiner from Denver, Colorado, arrived here this morning with two mining experts, and after calling upon Superintendent John Freesley, of the Last Chance mine, the party, including the superintendent, proceeded up to the mine. From what could be learned here it appears that Mr. Adams comes under instructions to examine the Last Chance mine for the purpose of ascertaining why the property is not giving any revenue towards the liquidation of the affairs of the First National bank of Spokane, the mine being the main asset of that bank.

Reports have it also that the comptroller is not wholly satisfied with the manner in which the affairs of the First National bank have been conducted by the receiver, F. Lewis Clarke, and he wishes to satisfy himself if the best possible efforts are being made by the receiver to pay the depositors of that institution as rapidly as possible. It is expected that Mr. Adams and his experts will put in two days in examination of the mine, when a report will be submitted to Comptroller Eckels.

Mr. Adams in Spokane. SPOKANE, Wash., March 2.—[Special.]—The Frank Adams mentioned in the above dispatch was in Spokane yesterday, leaving for Wardner in the afternoon. He is the brother of the present governor of Colorado, and is one of the most prominent and wealthy mine owners in that state. It was Mr. Adams' efforts as bank examiner that ferreted out the crookedness in the Denver National bank, which recently resulted in five of that bank's officials being sent to the pen.

What could be learned here of Mr. Adams' mission confirms the Wardner dispatch. Mr. Adams expected to find Receiver Clarke here, but he is at present in New York with Charles Sweeney, engaged in floating stock in Rossland properties.

HURRIED OFF TO ROME.

Senator Landry is Going to See Pope Leo About It.

OTTAWA, Ont., March 3.—Some of the French blues seem to have clean lost their heads in speculation in regard to the attitude the pope has taken on the school question. A dispatch was yesterday sent out to the effect that Solicitor-General Fitzpatrick is leaving for the Vatican. It has not the slightest foundation, for Fitzpatrick, who was in Toronto yesterday, will remain to address a meeting in Ottawa next week. This, however, can be positively announced, that Senator Landry was so far worked up over Chevalier Drole's announcement of the investigation into the school case, that he hied himself to Rome and with him goes Moneigneur Begin, of Quebec.

It is accepted here that Drole's announcement is perfectly true, only it was not intended to have been made public in the way it was. High political authorities at Ottawa utterly repudiated the yarn that the pope has denounced the school settlement as fixed upon by Mr. Laurier. "It is a pure fake, a fabrication," said one of the minister's yesterday.

OVER THE VETO.

Immigration Bill Again Passes the House of Representatives.

WASHINGTON, D. C., March 3.—In the senate this afternoon a message was read from the house reporting the passage of the immigration bill over the president's veto. The president's veto message was read in the senate today, and without comment was referred to the committee on immigration.

Hot Shot For Sherman.

LONDON, March 3.—All the afternoon papers today comment on the banquet at the Mansion house last night, in honor of United States Ambassador Thomas F. Bayard, and on the coming into office of President-elect McKinley. The Fall Mall Gazette hopes that Major McKinley will "receive the words of friendship and peace uttered yesterday evening as a message from Great Britain, and accept it in preference to the frothy nonsense his secretary of state delivered on Monday."

THE NICARAGUAN CANAL.

President Zelaya's Views as Expressed to Minister Baker.

WASHINGTON, D. C., March 3.—The president today sent to the senate the correspondence on file in the department of state relative to the Nicaraguan canal. Probably the most important part of the correspondence is a communication from Mr. Baker to Secretary Olney, dated February 3, 1896, in which he gives the details of an interview with President Zelaya, of Nicaragua, in which the latter stated that he had taken the opinion of a commission of three lawyers, who agreed that the Maritime Canal company had forfeited its concession by its failure to do any work for many years.

President Zelaya then expressed to Mr. Baker the hope that the United States government would take up the enterprise. He says it could be very easily arranged to have the contract transferred to the government of this country, as he had reached the conclusion that only a great government could put the work through.

CURIOUS OPERATION.

Piece of Sheep's Leg Joins the Fracture of a Man's Leg.

BUFFALO, N. Y., March 3.—An extraordinary operation was performed at the Lexington Heights hospital in this city recently and it bids fair to be successful. On January 1 an air drum in the carbolic works at Niagara Falls burst, and F. H. Moir, the foreman, was badly injured. The tibia of his left leg was shattered, the fracture being an unusually bad one. After examination Dr. Wilcox saw that the ordinary method of instituting a new growth and proper joining of the bone would not be successful. Accordingly a piece of sheep's bone, five inches long, was placed in the tibia, the wound sewed up and the leg placed in a plaster cast.

That was done three weeks ago. This morning Dr. Wilcox said that the operation had apparently been a success and that the joining of the natural bone and that of the sheep had been all that was hoped for. It will be three months, however, before Mr. Moir's leg will be considered a secure one.

Bob Cook Back at Yale.

NEW HAVEN, Conn., March 3.—Yale undergraduates were thrown into a state of great joy today upon the announcement that Robt. J. Cook, the veteran oarsman, is in New Haven for keeps, and will coach the Yale university crew almost constantly from now until the great triangular Yale-Harvard-Cornell boat race in June.

No Holiday for Them.

OTTAWA, March 3.—Today being Ash Wednesday was observed on the hill as a departmental holiday. As usual, however, the ministers were to be found hard at work in their offices, and a large deputation was received at 1 o'clock from Montreal, Sorel and Levis, asking for Dominion assistance toward the completion of the South Shore railway along the St. Lawrence river from Sorel to Levis.

Building Inspector Needed.

Among the first things the council must do, Colonel Scott should have included the appointment of a building inspector. Parties yesterday started to put up a building right on Lincoln street, at its junction with Columbia avenue. They knew they had no right to build on the street, but they thought no one would object. Higher up on the same street Jones and Whitaker are erecting a flimsy structure of 30 rooms that seems to have no better foundation than the frozen snow. The supports for the second floor are mere pieces of scantling, many of which are too short to reach across without piecing. If carried out on its present lines it will be a regular death trap.

Commercial Block Sold.

The Commercial block on Columbia avenue was sold yesterday to J. M. Brannick of Portland, Ore., by Paterson, Johnson & Co. for \$9,000 cash. The old owners were McKaig & Barry.

The Victory-Triumph.

Good progress is being made with the tunnel on the Victory, which is now in 140 feet. The whole face of the tunnel is now in good ore. Two samples were assayed last Friday. One assayed 2 1/2 per cent copper, 42 ounces silver and 1 1/2 per cent gold. The other, concentrated 3 to 1, assayed over 13 per cent copper, 98 3/4 ounces silver and \$2.50 in gold. This is the richest rock yet obtained in the mine. The ore is highly silicious and contains galena, peacock copper and copper pyrites. It has been continued improvement since the pay limit was first touched at a depth of 90 feet.

Printers Favor Home Industry.

At the last regular meeting of Rossland Typographical Union, No. 335, held Sunday afternoon, the following resolution was passed: "Resolved, That a committee of four be appointed to interview the candidates for aldermen and view the candidates for them to have all the city printing bear the label of the typographical union, and that all city printing be done in Rossland."

Wherever the sun shines Dr. Chase's remedies are known.

Thousands are suffering excruciating misery from that plague of the night, Iching Piles, and say nothing about it through delicacy. All such will find an instant relief in the use of Chase's Ointment. It never fails.

Kenway's Map of the Trail Creek Mine Camp.

It is the most reliable. Compiled at great expense, and corrected quarterly. It is up to date. It is more accurate and contains more information than any other and is lithographed on heavy bond paper, 40 x 28. Single copies \$1.50 mailed on receipt of price to B. C. KENWAY, Tacoma, Wash.

Mines and Mining Stocks.

Now is your chance to buy, sell or exchange mining stock; we offer the following bargains: 1,000 shares Hope Mining company, 5c. 4,000 shares Friday Mining company, 5c. 2,000 Ophir, 45c. 2,000 Monte Cristo, 1/2c. 500 Gold Belt, 2 1/2c. 200 Hamilton, 5c. If you have any mining stock you wish to sell come and see us; we buy for cash all mining stocks, etc.

MARTIN, 2334 First Avenue, Seattle.

RESULTS TALK

The management of the Canadian Gold Fields Syndicate, limited, now have over 150 feet of underground development to their credit in the rich Sunset No. 2. From the beginning there has been no "let up" in the exploration and development of this fine property. The work is to be pushed more vigorously, if possible, until the Sunset is a regular producer of pay ore in quantity. With pay ore in quantity come increased share values and dividends. As an investment therefore, the fully-paid and absolutely non-assessable shares of the Canadian Gold Fields syndicate, limited, at TEN CENTS per share appeal most forcibly to every intelligent investor.

Order shares, prospectuses and general information from The Walters Company, Limited Liability. Rossland, B. C.

H. O'HARA & CO., Toronto St., Toronto, Ont. SAWYER, MURPHEY & CO., 103 St. Francois Xavier St., Montreal. Or through any reliable bank or broker.

Stock Quotations. Weeks, Kennedy & Co., Brokers, Mines, Stocks, Real Estate, Insurance, Notaries Public. Rossland, B. C.

Table with columns: Companies, No. of Shares, Par Value, Price. Lists various mining stocks like Alberta, Adams, White Gold Copper, etc.

Ivanhoe Gold Mining Co., CAPITALIZATION \$1,000,000. TREASURY \$300,000. SITUATION OF MINE, SOPHIE MT., BELOW O. K. DEVELOPMENT.

Shaft 35 feet. One and one-half feet of ore assaying from \$8 to \$12 per ton. Tunnel 120 feet having about 20 feet to run to tap the ledge at a depth of 125 feet.

DIRECTORATE. Reliable business men of Rossland and Victoria. REFERENCES. Bank of Montreal, Rossland.

BROKERS The Reddin-Jackson Co. N. McKenzie & Co.

LATEST MINING MAP Of the principal mines in the vicinity of Rossland and Trail. Giving the most complete and latest information, showing the groups of claims owned by the incorporated mining companies. Including also an index map of Rossland and railway connections. Artistically drawn and without a doubt the best map of the district ever issued. Mailed to any address upon receipt of

PRICE \$1.00. Agents wanted to handle our mining maps. BUCK & BOULLON, Mining Engineers, Draughtsmen and Map Publishers, Stussli Bldg., Rossland, B. C.

When at Nelson Stop at the Clarke Hotel Rates \$2.00 Per Day. E. C. CLARKE, Prop. Late of Royal Hotel, Calgary.

Agents wanted to handle our mining maps. BUCK & BOULLON, Mining Engineers, Draughtsmen and Map Publishers, Stussli Bldg., Rossland, B. C.

GROVER VETOES IT

He Consigns the Immigration Bill to Everlasting Limbo.

THE CORLISS AMENDMENT

President Cleveland Declares It to Be Unnecessarily Harsh and Oppressive to Both Sides, and Certain to Provoke Retaliation From Canada.

WASHINGTON, D. C., March 2.—The president today sent to the house of representatives a message vetoing the immigration bill. The message is a somewhat lengthy document and is in part as follows:

I herewith return without approval bill No. 7,864, entitled, "An act to amend the immigration laws of the United States." By the first section of this bill, it is proposed to amend section one of the act of March 2, 1891, relating to immigration, by adding to the classes of aliens, thereby excluded from admission to the United States, the following:

"All persons physically capable and over 16 years of age, who cannot read or write the English or some other language, but a person not so able to read or write who is over 50 years of age, and is the parent or grandparent of a qualified immigrant over 21 years of age and capable of supporting such parent or grandparent, may accompany such immigrant or such parent or grandparent may be sent for and come to join the family of a child or grandchild over 21 years of age, similarly qualified and capable; and a wife or minor child not so able to read and write may accompany or be sent for and come and join the husband or parent similarly qualified and capable."

Heretofore Have Welcomed All.

A radical departure from our national policy relating to immigration is here presented. Heretofore we have welcomed all who came to the United States from other lands, except those whose moral or physical condition or history threatened danger to our national welfare and safety. Relying upon the zealous watchfulness of our people to prevent injury to our political and social fabric, we have encouraged those coming from foreign countries to cast their lot with us and join in the development of our vast domain, securing in return a share in the blessings of American citizenship.

A century's stupendous growth, largely due to the assimilation and thrift of millions of sturdy and patriotic adopted citizens, attests the success of the generous and free-handed policy, which, while guarding the people's interests, exacts from our immigrants only physical and moral soundness and a willingness and ability to work.

What Immigration Has Done.

A contemplation of the grand results of this policy cannot fail to arouse a powerful sentiment in its defence, for, however it might have been regarded as an original proposition and viewed as an experiment, its accomplishments are such that it is to be uprooted at this late day, and its disadvantages should be met and adequate, free from uncertainties and guarded against difficult and oppressive administration.

It is said that too many immigrants settle in our cities, thus dangerously increasing their idle and vicious population. This is certainly a disadvantage. It cannot be shown, however, that it affects all our cities, nor that it is permanent; nor does it appear that this condition, where it exists, demands as its remedy the reversal of our present immigration policy.

As to the Unemployed.

The claim is also made that the influx of foreign laborers deprives of the opportunity of work those who are better entitled than they to the privilege of earning their livelihood by daily toil. An unfortunate condition is certainly presented when any who are willing to labor are unemployed; but so far as this condition now exists among our people, it must be conceded to be a result of phenomenal business depression and the stagnation of all enterprises in which labor is a factor. With the advent of settled and honest governmental policies, and a consequent encouragement of activity of capital, the misfortunes of unemployed labor should be, to a great extent at least, remedied.

Anarchists Read and Write.

It is proposed by the bill under consideration to meet the alleged difficulties of the situation, by establishing an educational test. The best reason that could be given for this radical restriction of immigration, is the necessity of protecting our population against degeneration and saving our national peace and quiet from its reported turbulence and disorder. I cannot believe these evils would be protected against these evils by limiting immigration to those who can read and write. In my opinion, it is infinitely more safe to admit a citizen of the United States, who, though unable to read and write, seeks among us only a home and an opportunity to work, than to admit one of those unruly agitators and enemies of governmental control, who can not only read and write but delight in arousing and peacefully inclined to discontent and tumult. Violence and disorder do not originate with the illiterate laborers.

The Corliss Amendment.

Coming to the Corliss amendment the president says: "The fourth section of the bill provides that it shall be unlawful for any male alien, who has not in good faith made his declaration before the proper court of his intention to become a citizen of the United States, to be employed on any public works of the United States or to come regularly or habitually into the United States, by land or by water, for the purpose of engaging in any mechanical trade or manual labor for wages or salary, returning from time to time to a foreign country."

The fifth section provides: "That it shall be unlawful for any person, partnership, company or corporation knowingly to employ an alien laborer coming into the United States in violation of the next preceding section of this act."

Illiberal, Narrow, un-American.

The prohibition against the employment of aliens upon any public works

of the United States is in line with other legislation of a like character. It is quite a different thing, however, to declare it a crime for an alien to come regularly and habitually into the United States for the purpose of obtaining work from private parties if such alien returns from time to time to a foreign country and to constitute any employment of aliens a criminal offence.

When we consider these propositions of the bill in connection with our long northern frontier, and the boundaries of several of our states and territories, often but an imaginary line separating them from the British dominions, and recall the friendly intercourse between the people who are neighbors on either side, the provisions of the bill affecting them must be regarded as illiberal, narrow and un-American.

Present Conditions Favor Americans.

The residents of these states and territories have separate and special interests which in many cases make an interchange of labor between their people and their alien neighbors, most important, frequently with the advantage largely in favor of our citizens. This suggests the inexpediency of federal interference in these conditions, when not necessary to the correction of a substantial evil affecting the general welfare. Such unfriendly legislation as is proposed could hardly fail to provoke retaliatory measures to the injury of many of our citizens who now find employment in adjoining foreign soil.

Unnecessarily Oppressive.

The uncertainty of the construction to which the language of these provisions is subject, is a serious objection in a statute which describes a crime. An important element in the offence ought to be created by these sections in the "coming regularly or habitually into the United States." These words are impossible of definite and certain construction. The same may be said of the equally important words: "Returning from time to time to a foreign country."

A careful examination of this bill has

convinced me that for the reasons given, and others not specifically stated, its provisions are unnecessarily harsh and oppressive, and that its defects in construction would cause vexation and its operation result in harm to our citizens. (Signed):

GROVER CLEVELAND, Executive Mansion, March 2, 1897.

WAR EAGLE ALL RIGHT.

Working on the Vein All Through the Mine With Good Results.

"Last week there was a rumor in New York that the War Eagle was off the lead," was the opening of a conversation with Superintendent Hastings Monday.

"It would be difficult for us to get off the lead," answered the superintendent, with a smile. "We are working on the vein all through the mine. We are raising on it in three places; drifting on it in another. During the past week we have done about 125 feet of development work, principally in tunnels and raises, to get at the ore in the most economical shape."

The War Eagle shipments fell to fifty tons last week, one-fifth of the usual shipments since the beginning of the year. One reason for this is that six of the ten men on ore have been added to those on development work, so as to make the connections between the tunnels and raises. As many men as can conveniently work are now on the tunnels and raises. This week the shipment will again be 250 tons, or perhaps over that figure.

The Salmu Incorporated.

The Salmu Consolidated Gold Mining and Development company was incorporated yesterday and the provisional trustees are: V. P. Wiesenthal, Roseland; C. Dempster, Roseland; and George C. Rose, Midway. The property of the company consists of a group of four claims on Sheepcreek near Salmu townsite.

Grover O. Connelly of Richmond

Corners, N. B., says of Dr. Chase's Catarrh Cure: "I am pleased to use Dr. Chase's Catarrh Cure. I had it in a very severe form for nearly five years. I used several so-called cures, but got no relief. None of them did me any good. One box of Dr. Chase's Catarrh Cure completely cured me."

The Queen's Hotel, Toronto.

Attention is directed to the advertisement of the Queen's Hotel, Toronto, Canada. All the prominent mine owners in the district make their Toronto headquarters at the Queen's, and at any time of the day or evening mine owners and speculators from all parts of the Dominion may be found in the corridors of the hotel. The Queen's is one of the leading hotels of the Dominion all its appointments being first-class in every respect.

FOR SALE.

PLANING MILL MACHINERY.

Forty horse power boiler and engine, 25-inch tonner, shaper, mortiser, cramp, hand saw, rip, crosscut and cut-off saws, turning lathe, belt, knives, saws, shafting and pulleys. Everything required and in a first-class condition. For particulars apply to Stuart & Harper, Winnipeg, or

W. L. ORDE,

Real Estate, Mining Stocks, Commission Agent

43 East Columbia Avenue, ROSSELLAND, B. C.

NORTHERN PACIFIC IN THE FIELD

G. A. Mitchell Appointed Local Agent Through Sleeper to Roseland.

Frank D. Gibbs, general agent of the Northern Pacific Railway company at Spokane, arrived yesterday accompanied by G. A. Mitchell, Mr. Mitchell has just been appointed traveling freight agent for southern British Columbia, with headquarters at Roseland. They put in the evening looking for a suitable office and had not found one at a late hour.

Mr. Gibbs informs us that the Northern Pacific is arranging a new time schedule for its passenger trains, with the object of making close connections at Spokane with the train for Roseland. It is their intention to run a through sleeper between Seattle and Roseland.

BIG DEAL IN ELISE

E. L. Clark Has Secured Control of the Property.

WORK WILL BE RESUMED

As Soon as a Reorganization Is Effected Machinery Will Be Put In—The Mine Is Considered a Very Promising One.

The Elise, which has recently gone through some tribulations, including a shut down, has passed into other hands so far as the management is concerned. The deal was practically consummated on Saturday night when the 200,000 shares controlled by Joe Young were purchased. E. L. Clark has had the management of the deal and has persistently worked at it for the last three weeks, ever since it became apparent that no treasury stock could be sold owing to promoters' stock being offered below the price of treasury shares.

Mr. Clark started in paying 5 1/2 cents for the stock, but it came down as low as 3 cents. Ten thousand shares were bought on Saturday at 3 1/2 and 5,000 at 3 1/4. Mr. Clark bought in all the local stock he could and then obtained an option on a large block held by Morris & McGlynn, of San Francisco. Having obtained this he purchased Young's stock. The whole deal was on a basis of \$50,000 for a little over four-fifths of the stock, part payment having been made and the balance to be paid within a few days. Mr. Clark's associates in the deal are Ed. N. Bouche and Dr. D. Campbell.

The Elise is on the north fork of Wild Horse creek and was discovered by a Frenchman named Joe Petrie, who sold it nearly a year ago to Joe Young for \$300. Young brought samples of its ore into the city, and one piece of the richest kind assayed \$220 a ton. This made something of a sensation in the camp, and there was a stampede for Wild Horse creek. A company was formed and the first treasury stock offered at 10c, and afterwards put up to 15c. A shaft was sunk to the depth of 42 feet in remarkably good ore. About 60 tons of first-class ore are now on the dump, which were taken from this shaft. The company has recently sold some treasury stock to clear off its indebtedness, and there still remains 165,000 shares in the treasury.

Mr. Clark has had the property examined several times during the past three weeks, and the reports are uniformly good. Since Saturday he has received a proposition from responsible parties who offer to develop the mine and to pay a royalty of from 10 to 20 per cent., but this offer as well as one of \$8,000 profit on his investment has been declined.

All the experts report the Elise a true fissure vein four or five feet between walls, with a pay streak of 18 to 20 inches running through it assaying from 48 to 240 per ton. Tested for concentrates the ore shows at 10 or 12 to nearly \$1,200 per ton. It is intended to equip the mine with machinery and resume development as soon as the reorganization of the company is effected. The new deal in Elise has sent the stock up several points from the low water mark touched Saturday.

The Salmu Incorporated.

The Salmu Consolidated Gold Mining and Development company was incorporated yesterday and the provisional trustees are: V. P. Wiesenthal, Roseland; C. Dempster, Roseland; and George C. Rose, Midway. The property of the company consists of a group of four claims on Sheepcreek near Salmu townsite.

Grover O. Connelly of Richmond

Corners, N. B., says of Dr. Chase's Catarrh Cure: "I am pleased to use Dr. Chase's Catarrh Cure. I had it in a very severe form for nearly five years. I used several so-called cures, but got no relief. None of them did me any good. One box of Dr. Chase's Catarrh Cure completely cured me."

The Queen's Hotel, Toronto.

Attention is directed to the advertisement of the Queen's Hotel, Toronto, Canada. All the prominent mine owners in the district make their Toronto headquarters at the Queen's, and at any time of the day or evening mine owners and speculators from all parts of the Dominion may be found in the corridors of the hotel. The Queen's is one of the leading hotels of the Dominion all its appointments being first-class in every respect.

FOR SALE.

PLANING MILL MACHINERY.

Forty horse power boiler and engine, 25-inch tonner, shaper, mortiser, cramp, hand saw, rip, crosscut and cut-off saws, turning lathe, belt, knives, saws, shafting and pulleys. Everything required and in a first-class condition. For particulars apply to Stuart & Harper, Winnipeg, or

W. L. ORDE,

Real Estate, Mining Stocks, Commission Agent

43 East Columbia Avenue, ROSSELLAND, B. C.

NORTHERN PACIFIC IN THE FIELD

G. A. Mitchell Appointed Local Agent Through Sleeper to Roseland.

Frank D. Gibbs, general agent of the Northern Pacific Railway company at Spokane, arrived yesterday accompanied by G. A. Mitchell, Mr. Mitchell has just been appointed traveling freight agent for southern British Columbia, with headquarters at Roseland. They put in the evening looking for a suitable office and had not found one at a late hour.

Mr. Gibbs informs us that the Northern Pacific is arranging a new time schedule for its passenger trains, with the object of making close connections at Spokane with the train for Roseland. It is their intention to run a through sleeper between Seattle and Roseland.

Watch the

ELISE

STOCK.

Canadian Pacific Railway.

AND 800 PACIFIC LINE. The Cheapest, Most Comfortable and Direct Route From ROSSELLAND, KASLO, NELSON AND ALL KOOTENAY POINTS. Through Tickets to and from the Pacific Coast to Eastern and European Points.

C. P. R. KOOTENAY STEAMERS.

TIME TABLE. Trail-Northport Route. STEAMER LYTTON. Daily except Sunday.

8 a. m. De TRAIL Ar 4:30 p. m. 9 a. m. Ar WANEKA De 1 p. m. 10 a. m. Ar NORTHPOK De 1 p. m.

Connections at Northport with S. F. & N. R. Ry. to and from Spokane and way points; connections at Trail with C. & W. R. Ry. to and from Roseland; connections at Trail with Str. Trail to and from Robson, Nakusp and Revelstoke.

Trail-Robson Route. Tuesday, Thursday and Saturday.

8:30 a. m. De TRAIL Ar 5 p. m. 1:30 p. m. Ar ROBSON De 3 p. m.

Connections at Robson with Columbia & Kootenay railway to and from Nelson and all Kootenay Lake points and with steamer Nakusp for Nakusp, all Siccan points, and Arrowhead and all C. P. R. points.

For particulars as to rates, tickets, terms, etc. apply to any agent Canadian Pacific Railway

A. B. MACKENZIE, Agt., Roseland.

H. MCGREGOR, Traveling Passenger Agent, Nelson.

GEO. McL. BROWN, District Passenger Agent, Vancouver.

CASCADE CITY.

Located two miles from Christina Lake at the Falls of the Kettle River. Finest water power in British Columbia. Junction point of two railroads. This property is now on the market. The undersigned has the exclusive agency.

Prices from \$75 to \$100 LOTS 50 by 120 FEET.

A. P. HUNTER,

Mining Broker and Real Estate Agent. Manager Pure Gold Mining Company.

Office: Lalonde & Rodier Bldg., ROSSELLAND, B. C.

A. B. Mackenzie & Co.

MINING BROKERS.

Mines, Prospects and Stocks.

Columbia Ave., Next Bank of Montreal,

ROSSLAND, B. C.

M. P. Hatch & Co.

Dealers, Promoters And Brokers in Columbia Gold Mining Properties.

Correspondence Solicited. References: R. G. Dun & Co's Commercial Agency or Ellicott Square Bank, Buffalo.

REAL ESTATE EXCHANGE BUILDING, Buffalo, N. Y.

MINING

THIRTY-SEVENTH YEAR. WORLD-WIDE CIRCULATION. Twenty Pages; Weekly; Illustrated.

INDISPENSABLE TO MINING MEN. THREE DOLLARS PER YEAR, POSTPAID. MINE AND SCIENTIFIC PRESS. 220 MARKET ST., SAN FRANCISCO, CAL.

T. C. Lawe, Agent, Roseland.

Remington Typewriter, Box 322.

Lalonde & Rodier Block, Roseland.

Syndicate forming. Mining property wanted. Send full particulars.

C. H. CLARK, 203 University, Ave., Toronto.

If you are interested in mining you cannot afford to be without THE ROSSELLAND WEEKLY MINER. Post free to any address in the United States or Canada for \$2 a year in advance.

LOGE MEETINGS. CORINTHIAN LODGE, No. 7 A. F. & A. M. Meets in Roseland Masonic Hall on the first Thursday of each month. Visiting brethren invited. W. A. MCKINNAIE, Secretary.

THE ROSSELLAND WEEKLY MINER

IS THE LARGEST WEEKLY PAPER

IN THE PROVINCE AND THE LARGEST MINING PAPER IN CANADA.

69 COLUMNS

16 PAGES.

\$2 PER YEAR.

LOGE MEETINGS.

CORINTHIAN LODGE, No. 7 A. F. & A. M. Meets in Roseland Masonic Hall on the first Thursday of each month. Visiting brethren invited. W. A. MCKINNAIE, Secretary.

IN SILVERY SLOGAN

Large Number of Mines Bonded or Sold Recently.

\$60,000 FOR CALIFORNIA

New York Syndicate Took the Mine at That Price—History of the Slogan

F. A. Mackenzie, the special representative of the Toronto Mail and Empire, who has been in Kootenay for the past two months, recently returned from a lengthy trip through the Slogan.

Another claim recently bonded to a New York syndicate is the famous California, a mile and a half from New Denver.

The Slogan Bob, on Robinson creek, a mile and a half north of Springer creek, has been bonded to Vancouver parties for \$15,000, of which 20 per cent was paid cash.

The first man to locate it got an assay of nothing from the ore. The second man did little better. His samples only went a trace of gold and seven-tenths of an ounce in silver.

Commodore Reineck's recall was due to having shown needless deference to the wishes of the foreign admirals, and especially because of the fact that he failed to fire upon the Turkish warship Fudaina when the latter joined in the bombardment.

It is announced that more naval and military reserves are called out.

Colonel Smolentz's Successor. LONDON, March 3.—The Athens correspondent of the Daily Mail states that Colonel Motaxas has been appointed to succeed Colonel Smolentz.

Buy a few copies of THE WEEKLY ROSSLAND MINER and send them to your friends in the east. Each issue contains an epitome of the events of the week in Kootenay.

Spokane Closing Quotations. SPOKANE, Wash., March 3.—(Special.) The closing quotations on the exchange today were as follows:

A. W. Wright and J. K. Clark, in connection with some eastern people, have purchased the Palmetto, which adjoins the well known Queen Bee mine.

Just before leaving Sandon Mr. Mackenzie met Patrick Byrne, of Johannesburg, who represents a wealthy English and Scotch syndicate.

WORK ON QUARTZ CREEK. One Hundred Men There and On the Porcupine Claims.

F. W. Rolt returned yesterday from a five days' trip in the Wild Horse country, and says he found things pretty busy on Quartz and Porcupine creeks.

CONGRATULATIONS FROM SPOKANE. The following message was received yesterday afternoon: "Please bulletin the following: The Chronicle sends greeting to citizens of Rossland and British Columbia."

PRESIDENT CORBIN BACK He Found Great Business Improvement in the East.

Immense Travel Expected to British Columbia This Spring and Summer—Passenger Facilities.

SPOKANE, Wash., March 3.—(Special.) President D. C. Corbin has returned from a three weeks business trip as far east as New York.

The local sales reported to THE MINER yesterday were as follows: 2,200 Crownwell, 3 1/2; 3,000 Red Eagle, 10; 4,000 Old Gold, 5.

Local Sales. The local sales of stock reported to THE MINER this week include: 200 Magnum, 10; 2,000 Silver Bell, 5c; 1,000 Old Gold, 5c.

It was really a surprise to me to find how well people all over the east were posted on the mining country up north.

By special arrangement with the Mail-Empire of Toronto we are enabled to give daily quotations on War Eagle Consolidated.

C. J. WALKER, 108 BISHOPGATE STREET (WITHIN), LONDON, E. C.

London Agent for the Rossland "Miner." Receives advertisements of all kinds for European press. Rates quoted. Contracts at special prices.

ONE DOLLAR PER MONTH. TEN DOLLARS PER YEAR.

coast travel to the Kootenay country, and I think that such an arrangement will soon go into effect.

MAKING ANGRY THREATS. Europe Warned That Soon Peace May Be Impossible.

ATHENS, March 3.—The Greek newspapers are unanimous in counselling resistance to the mandate of the powers.

The Neophaneris, the government organ, hopes that the reply of M. Deljanis to the identical notes of the powers will conform to the desire of the Greek nation.

Colonel Smolentz, ex-minister of war, in a letter to the Greek newspaper, confirms the report of his resignation.

It is announced that more naval and military reserves are called out.

Colonel Smolentz's Successor. LONDON, March 3.—The Athens correspondent of the Daily Mail states that Colonel Motaxas has been appointed to succeed Colonel Smolentz.

Commodore Reineck's recall was due to having shown needless deference to the wishes of the foreign admirals, and especially because of the fact that he failed to fire upon the Turkish warship Fudaina when the latter joined in the bombardment.

It is announced that more naval and military reserves are called out.

Colonel Smolentz's Successor. LONDON, March 3.—The Athens correspondent of the Daily Mail states that Colonel Motaxas has been appointed to succeed Colonel Smolentz.

Buy a few copies of THE WEEKLY ROSSLAND MINER and send them to your friends in the east.

Spokane Closing Quotations. SPOKANE, Wash., March 3.—(Special.) The closing quotations on the exchange today were as follows:

A. W. Wright and J. K. Clark, in connection with some eastern people, have purchased the Palmetto, which adjoins the well known Queen Bee mine.

Just before leaving Sandon Mr. Mackenzie met Patrick Byrne, of Johannesburg, who represents a wealthy English and Scotch syndicate.

WORK ON QUARTZ CREEK. One Hundred Men There and On the Porcupine Claims.

F. W. Rolt returned yesterday from a five days' trip in the Wild Horse country, and says he found things pretty busy on Quartz and Porcupine creeks.

CONGRATULATIONS FROM SPOKANE. The following message was received yesterday afternoon: "Please bulletin the following: The Chronicle sends greeting to citizens of Rossland and British Columbia."

PRESIDENT CORBIN BACK He Found Great Business Improvement in the East.

Immense Travel Expected to British Columbia This Spring and Summer—Passenger Facilities.

SPOKANE, Wash., March 3.—(Special.) President D. C. Corbin has returned from a three weeks business trip as far east as New York.

The local sales reported to THE MINER yesterday were as follows: 2,200 Crownwell, 3 1/2; 3,000 Red Eagle, 10; 4,000 Old Gold, 5.

Local Sales. The local sales of stock reported to THE MINER this week include: 200 Magnum, 10; 2,000 Silver Bell, 5c; 1,000 Old Gold, 5c.

It was really a surprise to me to find how well people all over the east were posted on the mining country up north.

By special arrangement with the Mail-Empire of Toronto we are enabled to give daily quotations on War Eagle Consolidated.

C. J. WALKER, 108 BISHOPGATE STREET (WITHIN), LONDON, E. C.

London Agent for the Rossland "Miner." Receives advertisements of all kinds for European press. Rates quoted. Contracts at special prices.

ONE DOLLAR PER MONTH. TEN DOLLARS PER YEAR.

Ingersoll = Sergeant Drill Dep't.

Main Office and Works, MONTREAL P. Q.

Air Compressors, Rock Drills, Link Motion and Friction Hoisting and Winding Engines, Boilers, Sinking and Feed Pumps. GATES, ROCK BREAKERS AND ROLLS. Duplicate Parts Carried in Stock. For Particulars and Estimates Write to or Call on

JAMES D. SWORD, Manager, Rossland Branch.

DOMINION WIRE ROPE CO., Ltd.,

299 St. James St., Montreal, Que.

BLEICHERT TRAMWAYS

Manufacturers of

Standard Hoisting, Mining, Tramway, Ferry and Guy Ropes.

"Langs" Underground Haulage and Slope Ropes.

JAMES D. SWORD, Agent, Rossland.

Catalogue and Estimates on Application.

NORTHEY PUMP CO., Ltd., Toronto.

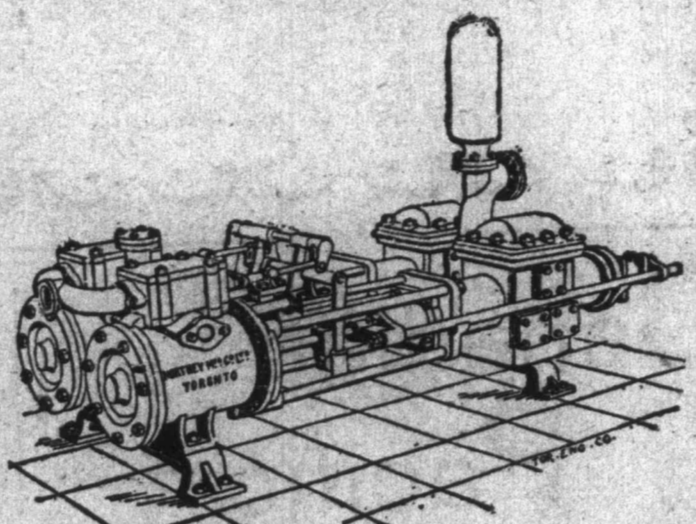
Manufacturers of

Every Description of PUMPS.

Mining Pumps a Specialty.

Write for Prices.

JAMES D. SWORD, Agent, Rossland.



Bell 5 1/2; 50,000 Mannamed, 5c; 1,000 Royal Gold at 5; 2,000 Giant, 150 5/8 Yale, 5; 2,500 Pickup, 1 1/2; 1,500 Silver Bell, 5 1/2; 100 Josie, 5 1/2; 15,000 Royal Five, 6; 500 Dundee, 10; 4,500; Dundee, 10; 20,000 Royal Five, 6.

[Note.—No stocks are listed in the following table unless the property on which they are founded has been fully paid for, and the title perfected.]

Quotations corrected daily by the Reddin Jackson Co. Ltd., mining brokers Rossland, B. C.

Table with columns: Companies, No. of Shares, Par Value, Price. Lists various mining companies and their stock prices.

M. E. Dempster & Co.,

(One of the Oldest Established Firms in Rossland.)

Stock Brokers.

Agents and correspondents throughout British Columbia, Canada and England. Special attention given to outside orders by mail or wire. Quotations promptly supplied on application.

Cable Address, "Me'oc," Rossland. Codes: A B C and Clough's. P. O. Bx 25.

Registered Cable Address, "Rosmina."

A. W. ROSS & CO., MINING BROKERS, ETC.

4 King St. E. Toronto, Ont. 154 St. James Street, Montreal, Que.

Contractors for the sale of Treasury Stock of Mining Corporations in Trail Creek, Slocan, and other British Columbia Mining Districts. Quotations and Correspondence Solicited.

Sawyer, Murphey & Co., MINING BROKERS

Canada Life Building, Toronto, Ont.

We are in position to negotiate the sale of first-class mineral locations. Agents for the Eastern Mining Syndicate, which has the strongest directorate of any development company operating in Canada.

C. F. CLOUGH, PRESIDENT. L. J. MCATEE, VICE-PRESIDENT AND TREASURER. J. F. PIGGOTT, SECRETARY.

C. F. CLOUGH & CO., (Incorporated.)

Mines and Mining Stock Brokerage

Dealers in the Mines and Stocks of Companies Operating in Trail Creek, Slocan, and Boundary Creek Mining Districts in British Columbia and the Various Districts in the States of Washington, Idaho and Montana. Correspondence Solicited. Send for Circular Letter Giving Latest Quotations. Information Furnished upon Application.

Offices: Wolverson Blk., Spokane. 36 King St. East Toronto Ont, Rossland, B. C.

The Daily Rossland Miner.

KOOTENAY'S ONLY DAILY.

ONE DOLLAR PER MONTH. TEN DOLLARS PER YEAR.

Two Dollars

THE C

Capital S

R. J. Bea Dormitzer, Solicitor, Receiver and Manager

Joseph I John R. Re J. Fred Ritch

THE C

The Golden Drive Trail Creek camp is an old location, has veins through its side

SHAREH

Not only is the stock but by a special provision beyond the amount of mo

CHARACT

About \$7,000 has already been subscribed to the mine established. The tunnel 150 feet, by the face and by the driving three distinct veins were to four feet. The ore is gold being seen from the gold—the average being ore bodies and ore take

First issue

Address V

Inte

Capital

TRUS

M

The comp creek. The Sullivan in gold values The Snow Crown Point A shaft on the through the S will be contin

The remaine

For shar

Secreta

Two Dollars a Year.

ROSSLAND, B. C., THURSDAY, MARCH 4, 1897.

Third Year, Number 1.

THE GOLDEN DRIP MINING AND MILLING CO., Ltd.

Capital Stock 500,000 Shares. Par Value \$1.00. Fully Paid and Non-Assessable. Treasury Stock 125,000 Shares.

Officers.

R. J. Bealey, of the R. J. Bealey Co., Ltd., Rossland, President; Joseph Dormitzer, Capitalist, St. Louis, Mo., Vice-President; W. J. Whiteside, Solicitor, Rossland, Treasurer; W. G. Merryweather, Rossland, Secretary and Manager.

Directors.

Joseph Dormitzer, R. J. Bealey, W. J. Whiteside, W. G. Merryweather, John R. Reavis, Pres. Rossland Miner Printing and Publishing Co., and J. Fred Ritchie, Engineer.

THE GOLDEN DRIP MINE.

The Golden Drip is situated in the free milling belt of the Trail Creek camp, adjoining the O. K. and I. X. L. It is an old location, has the right to follow the dip of its veins through its side lines and is crown granted.

SHAREHOLDERS PROTECTED.

Not only is the stock of the company fully paid and non-assessable, but by a special provision of the by-laws no debt can be incurred beyond the amount of money actually in the treasury to meet it.

CHARACTER OF THE PROPERTY.

About \$7,000 has already been expended on the mine. It is therefore more than a mere prospect. It was determined not to ask the public to subscribe to the treasury shares until the value of the property was established. This has been done by running a main working tunnel 180 feet, by the making of an upraise from the tunnel to the surface and by the driving of about 50 feet of drifts. In doing this work three distinct veins were encountered varying in width from 12 inches to four feet. The ore found in these veins is a free milling quartz, free at least from time to time. The value runs from \$7 to \$40 in gold—the average being about \$18. Drifts are now being run on these ore bodies and ore taken out for milling.

PLANS OF THE COMPANY.

As soon as sufficient ore is obtained to justify the erection of a mill the company will build a mill of such capacity as shall be warranted by the necessities of the mine, and begin the production of bullion. It is proposed also to run a long tunnel from the creek level below to give a depth of several hundred feet. It is for the purpose of providing funds for these undertakings that the treasury shares are now offered.

FIRST ISSUE OF SHARES.

The first installment of treasury stock consisting of 50,000 shares is now offered to the public at 15 cents per share. The company believes it altogether reasonable that the purchasers of these shares will enjoy an early advance owing to the highly promising condition of the mine. It is almost an invariable rule of this company that the first issue of treasury shares advances immediately to a higher figure than the original selling price.

INVESTIGATION ASKED.

Intending investors are invited to make the closest inquiry as to this property as well as to the standing and character of the directors. This is put forth as a thoroughly legitimate interest, venture and the most scrupulous regard will be had for the mining of every subscriber.

First issue of 50,000 Treasury Shares now offered at

Fifteen Cents.

Address W. G. MERRYWEATHER, Sec'y.

Head Office, Rossland, B. C.

International Gold-Copper Mining Co., Limited Liability.

Incorporated Under the Laws of British Columbia.

Capital Stock 1,000,000. Par Value \$1.00.

FULLY PAID AND NON-ASSESSABLE.

Treasury Stock 350,000 Shares.

TRUSTEES. A. C. Sinclair, R. C. McDonald and J. S. Paterson, Rossland, B. C.

Mines: Snowdrop and Sullivan.

The Company's Properties.

The company has just acquired the Sullivan mine, one mile from the mouth of Sullivan creek.

The Sullivan is a full sized claim and has four feet of solid pyritic ore carrying \$16.00 in gold values. The mine is close to transportation and is a very valuable property.

The Snowdrop is 3 1/2 miles from Rossland in the South Belt. It is distant from the Crown Point about three-quarters of a mile. Adjoining it on the east is the Summit. A shaft on this claim shows a large ore body assaying \$12 per ton in gold. This vein runs through the Snowdrop. A site has been selected for a tunnel and work on the Snowdrop will be continued all winter.

Shares.

The remainder of the First block of Stock has been advanced to Five Cents per Share.

For shares or full particulars call on or address

J. PATERSON, Secretary, Stussi Blk., Rossland, B. C.

Remittances may be made to the Manager of the Bank of British North America, Rossland.

THE WEEK AT KASLO

Ore Receipts From Twelve Mines Total Up 690 Tons.

DELLIE STRIKES IT RICH

Two Feet of Dry Ore Running 150 Ounces in Silver—Hot Game at Hockey—Masquerade Ball and Other Social Events.

KASLO, Feb. 27.—[Special.]—The receipts of ore at the station of the Kaslo & Slocan railway have been considerably above the average during the past week. The Noble Five Consolidated appears upon the list, but its shipments have not been as large as they are expected to be in the immediate future. There have been more shipments, however, than usual, and some carloads have been received which have not yet been entered for shipment outwardly and have not yet been passed into the company's books. The following are the figures for the week ending February 26:

Table with columns: Mine Name, Receipts (Tons), and Price per Ton. Includes Noble Five, Slocan Star, Surprise, etc.

This makes a total of nearly 690 tons. Of these shipments the ore from the Noble Five is the most valuable. The Ruth sends its galena to Pueblo and the carbonates to Everett, after passing both through the Kaslo City Smelter works. The Reco ore goes to Denver, Col., and that from the Surprise and Rambler smelter at Omaha and Grant smelter at Whitewater. The Wellington and Jackson group consign to the Kootenay Ore company and its further destination has not been announced. It will thus be seen that most of the western smelting companies supplement their supplies from the Slocan area and it may be readily imagined how serious would be the effect upon this district of any legislation on either side of the international boundary which might curtail or put an end to these shipments.

The traffic on the Kaslo & Slocan continues very satisfactory. There has been little or no detention because of snow, and the down trains on Thursday evening and the down trains on Friday were considerably delayed by a mud and snow slide between Cody and the Kaslo siding.

Dellie Strikes It. An important strike of clean dry ore is reported from the Dellie mine at Anasworth. It is said to be two feet in width and to assay over 150 ounces to the ton. There are also excellent indications in the face of the tunnel which has now been driven 30 feet.

Mines and Mining Companies. The Commonwealth group of claims on Hooker creek is being developed vigorously during the winter by W. A. McEwan, as manager. A tunnel has been driven along the lead for 120 feet, and a crosscut run which disclosed four feet of highly mineralized rock.

The mineral claims owned by the White Grouse Mining company recently organized in Spokane, there is said to be a well-defined lead upon the property, which has been traced through three claims. Assays from the claims have returned from 10 to 25 per cent copper, from 25 to 35 per cent silver, and from 75 to 100 ounces of gold and silver in the same quantity.

The latest company in process of formation is said to have for its objects the acquisition of the now owned in part or wholly by J. A. Whittier, J. H. Thompson, John M. Martin and A. W. Good. The capital stock will be \$200,000. It is enough. The Goodenough claims in the Reco, and has produced some of the richest ore ever taken out in the Slocan. The Goodenough claims have also produced high-grade ore returning remarkable assay values.

The Levantine Gold Mining and Milling company is being organized in Kaslo for the purpose of taking over and developing some promising claims about four miles from the eastern shore of Kootenay lake, a few miles north of Kaslo.

Sandon Won at Hockey. The first hockey match between towns ever played in the Kootenay district, came off in Sandon on Wednesday evening last between Sandon and Kaslo clubs. The victory went to the Sandon club. The match was characterized by hot playing from the onset. The first two goals were taken by the Sandon club after a great number of swift shots had been made upon both goals and some good checking done by both sides. The third goal was won by the Kaslo club with a terrific rush in which there was much play in the vicinity of goal. In the second half there were further exhibitions of swift play by the Sandon boys who won three goals before the home team was able to score a goal. They did this through a brilliant second time, when they did through a brilliant second time, when they did through a brilliant second time, when they did through a brilliant second time.

Masquerade Ball. The hockey match was followed on Thursday evening by a fancy dress carnival, which afforded an opportunity for boys and girls, ladies and gentlemen to make a very spirited display. The variety of characters was not, perhaps, at great time for preparation. But there were some well sustained characters and pretty costumes. One lady masked and handsomely costumed, attracted considerable attention, and created some surprise when it was found that a well-known and popular young man had thus masqueraded.

The Diamond Jubilee. A meeting of the ladies of Kaslo was held on Monday last in the Presbyterian church to take action upon a communication from her excellency the countess of Aberdeen in respect to the Victorian order which she proposes in connection with her majesty's diamond jubilee. The meeting was well attended and unanimously resolved to forward the work to the extent of their ability. Further action will be taken at a meeting to be held on Monday next.

Personals and Brevities. D. C. McGregor, the contractor, has just completed an extensive addition to the round house of the Kaslo & Slocan railway. Major J. Lynch Montgomery, president of the Washington Mining company, is in Spokane on business connected with his company. Neil F. McKay, formerly of Nova Scotia but more recently connected with the New office of Anley Morrison, M. P. for New Westminster district, has removed to Kaslo and become a partner with C. W. McKean & C. R. McKay who will add to the reputation of the Kootenay bar.

From present appearances there will be a building boom in this city during the coming season. Preparations are already being made for the construction of new buildings. McPhail Brothers have begun to prepare the foundation for a handsome building which they will erect at the corner of Front and Fifth streets. It will be occupied as stores and offices.

BAD FOR HOLVILLE SOONERS. South Half of the Reservation May Not Be Thrown Open. SPOKANE, Wash., Feb. 27.—[Special.]—Private dispatches received here from Washington, D. C., say that the Indian appropriation bill, but agreeing to a conference. This is looked upon as an almost certain defeat of Senator Wilcox's provision for the opening of the south half of Colville reservation to miners. It is thought that the conference might result in a lease of the reservation.

SUCCESSFUL TO THE COLD. Charles Sherwood Made a Plucky Struggle For His Life. NELSON, Feb. 27.—[Special.]—Charles Sherwood, whose death on the Rover creek trail was chronicled yesterday, was only two miles from camp when he succumbed. The body was brought into Nelson yesterday. It appears that Sherwood, a few days previous to the time his remains were found, set out alone on foot for Nelson, and after traversing his business here endeavored to start a fire with the bark from an adjoining tree, but was unsuccessful. In despair he had laid down to rest, but constantly recognizing the danger of the proceeding he made one last effort for life.

Two More Accidents. E. W. Hoar, one of the workmen employed in Gray's sawmill, had one of his arms cut off by the elbow by a circular saw last Wednesday. In endeavoring to remove a splinter from between a log and the saw the teeth caught his glove and before he could get away from it his arm was severed.

Court Notes. T. C. Kauffman, until recently a grocer in Nelson, was arrested at Kaslo on Friday for contempt of court in failing to appear in answer to a summons from Judge Fortin and answer interrogations relative to his estate. Judge Fortin sentenced him to 10 days in jail.

NEW BUSINESS BLOCKS. Large Number of Fine Buildings Going Up in Town. A trip around town discloses the fact that there is an immense number of buildings in course of construction at present. Residences are going up in every direction, no less than 25 now being under way in the Montreal syndicate property, while all over the railway addition new buildings are displacing the shacks. But it is in the business quarter that the most activity is being shown.

John McLeod is building a three-story business block at the corner of St. Paul street and Columbia avenue, which when completed, will probably be the prettiest building in town. Two large store-rooms will be on the ground floor, while the upper stories will be divided into 21 large and commodious rooms for lodging purposes.

Next and adjoining this block is the building of George N. Taylor, a fine three-story structure, just nearing completion. This will be divided into the same number of rooms as the McLeod block. It will be the first building in town to be heated with hot air furnaces.

Two two-story and one one-story blocks are going up on Lincoln street, just north of Columbia avenue. The Trader's block is a fine three-story building just completed at the corner of Lincoln and Columbia. The ground floor is used for offices and store-rooms, and the upper floors are occupied by the Creedmore hotel.

The Commercial block is another new building on Columbia avenue, just west of St. Paul. It is of two stories and is to be used for the same purposes as the Trader's block.

The Bank of British North America is building a block on Columbia avenue near Washington. The lower floor is to be used for banking purposes, while the upper story is divided into six large and commodious rooms for the accommodation of the staff of clerks.

The hardware store adjoining this has been transformed from one to two stories in the past week. The upstairs is divided off into lodging apartments. In the rear of these facing on Washington street and adjoining the Collins hotel, which is also a brand new building, is the Moffat block, just going up, a three-story structure to be used for hotel purposes. Two doors north of this will be Steen & Co's wholesale liquor house, two stories and a basement, the stone work and excavation for which are now almost completed.

D. O. McCarthy is erecting a two and a half story block for store and lodging rooms, on Washington, just north of the Methodist church. Just north of this the side walls are now up for a three-story building to be used as a hotel.

A three-story building is going up on the corner of Spokane street and Le Roi avenue, to be used as a temperance hotel. It will contain 70 rooms.

Besides these there are a great number of one-story business houses in process of erection.

LIBEL ON ROSSLAND

A Malicious Aspersions of the People of the Coast.

WHAT DO YOU THINK OF IT?

Robert Scott, Late of Galt and J. A. Smith, Honorary Secretary of the Rossland Board of Trade, on the Subject of Adventurers.

By Saturday mail THE MINER received a marked copy of the Toronto World of February 20. As we are constantly receiving marked copies of various papers the circumstance did not at first attract our attention, but on opening the paper and turning to page 10 we found something which we are free to admit surprised us.

On this page was a large advertisement of the Great Western Mutual Exploration and Development Corporation of British Columbia, limited. It was decorated with a number of blue pencil marks and on the margin of the paper was written: "What do you think of this?"

On referring to the first of the marked paragraphs we found the following astonishing statement, which we quote verbatim:

"Good reliable men are scarce at the coast, where the floating population is too largely made up of adventurers."

More blue pencil marks called our attention to two of the four names on the directorate. They were as follows:

"Vice president, Robert Scott, Esq., Rossland, ex-mayor of Galt, Western Manager, J. A. Smith Esq., Rossland, hon. sec. Rossland board of trade."

In another part of this delectable advertisement we find the following:

"Mr. J. A. Smith, the honorary secretary of the Rossland board of trade, a gentleman of large experience in mining matters and who is himself largely interested financially and otherwise in the district, has consented to take charge as stated with his own hands on the executive board among others Mr. Robert Scott, well known in Ontario as the president of the Victoria Wheel works, Galt, but who has latterly acquired large financial interests in Rossland, and who has thoroughly identified himself with the present and future of the town."

The party who sent us that paper asks us what we think of it. Well, to be candid, we think it would make a horse laugh. But there is here Mr. Robert Scott, late of Galt, and Mr. J. A. Smith, late of Toronto, (who has kindly consented to act as western manager) both advising the people of Canada, or at least the readers of the World, that the residents of the Pacific coast are "largely adventurers." To lend weight to this aspersions of the people of the coast, Mr. Smith styles himself the "Honorary secretary of the Rossland board of trade."

Rossland and its board of trade have much to be proud of if Mr. Robert Scott of Galt and Mr. J. A. Smith of Toronto, are accepted in the east as representatives of this community.

An interesting subject to speculate on in this connection is as to what constitutes the "floating population" of Rossland. How long will Mr. Scott and Mr. Smith have to reside here to be counted as floaters? And if they are not floaters since when did they become permanent residents? And if Messrs. Scott and Smith are not floaters will they be so kind as to name some floater so that we may know one when we see him.

FROM LOOKOUT MOUNTAIN. A Very Rich Piece of Float On Exhibition Saturday.

About the most remarkable piece of ore ever brought into camp was being exhibited Saturday afternoon at the office of Messrs. Miller & Kane by H. H. Johnson. It was a piece of float and was found by Mr. Johnson about four months ago on Lookout mountain. He had kept it a secret until lately, and had only brought it down town yesterday at the request of many friends. It is a most beautiful piece of quartz, weighing about two pounds. It contained considerable mica, and many small particles of gold can be readily seen with the naked eye. Intermingled with the gold and mica are innumerable small garnets, whose brilliancy offsets the dull color of the rock to great advantage.

Mr. Johnson prizes this little piece of ore very highly, and naturally expects to find a large body of rich ore in the spring in the vicinity of where he picked up the float.

ST. ELMO A TRUE FISSURE. The Crosscut Discloses Smooth Walls With a Clay Selvage.

The crosscut near the face of the St. Elmo tunnel makes a remarkable showing. The tunnel starts on the St. Elmo Cor. and is in 290 feet and at a depth from the surface of 250. The crosscut disclosed the fact that the vein is 22 feet wide. Also in this crosscut the foot and hanging walls were found to be well defined and smooth with a clay selvage.

This goes to show that the St. Elmo Cliff vein is a true fissure, notwithstanding the theory of geologists that there were no fissures in the camp, and the so-called fissures were merely segregation veins.

Gold Bricks From the O. K. Spokesman - Review: Joseph L. Warner, general manager of the O. K. mine, came down on Tuesday evening, bringing with him two gold bricks of the value of \$1,500, the result of a six days' run of the 10-stamp mill. This value does not include all of the value of the ore. The concentrates are separate and what they will amount to can better be determined when the vanners are cleaned. This shipment of gold bricks is not the only one made from the O. K. One valued at \$600 was shipped January 22, another of \$1,200 on the 28th. There are 19 tons of ore now in transit and 17 tons now ready to ship.

MORNING STAR MINE

Butte Owners Will Put In Machinery and Resume Work.

PROPERTY PROMISES WELL

The Crosscut from the Hundred-Foot Level Has a Fair Pace of Pay Ore—Surface Showing Is Immense—Plan of Development.

Louis Liemann, of the well-known firm of Liemann & Schmidt of Butte, who has been in Roseland for the past week looking after the affairs of the Morning Star company, in which he is largely interested, will leave for the Boundary country on Monday or Tuesday. Since his arrival here he has made arrangements to resume work on the Morning Star, which lies about a mile due north of the Cliff.

Readers of THE MINER will remember that considerable work was done on this property last fall with most gratifying results. The mine has one of the largest surface showings in the camp, the mineralized vein cropping for a width of about 100 feet. On this showing a working shaft was sunk to a depth of 100 feet. For this entire distance the shaft was in ore, and at times very high assays were obtained. The solid ore, whenever encountered, averaged about 10 per cent copper and ran from \$1 to \$35 in gold, and as high as 30 ounces of silver. As a general rule the ore was highly silicious, and if any ore in the camp is susceptible of concentration that of the Morning Star assuredly is.

When the 100-foot level was reached a crosscut was begun and it had only been driven a few feet when the flow of water increased so rapidly that the workers were driven out of the shaft. The last shot put in disclosed a full face of solid sulphide ore averaging about 30 per cent in copper—about as good ore as was ever found in the camp.

Mr. Liemann has now made arrangements to equip the mine with machinery and as soon as a pump and hoist can be installed work will be resumed. The first work to be undertaken will be the continuation of the crosscut to the hanging wall, where the rich ore is usually found in this camp. As soon as the true extent and value of the ore body on this level is determined drifts will be run on the vein both ways and the 200-foot level sinking the shaft to. In this way it is hoped to have the mine in shape to be a steady producer by next fall.

ARDUOUS SURVEYING.

Six Feet of Snow and a Rough Country to Contend With. H. B. Smith, who is in charge of the survey being made of the lands of the Nelson & Fort Sheppard railroad, between Waneta and Nelson, returned Friday. He has 54 men out, one of the survey, divided into four parties, one of which he directs himself, in addition to giving a general supervision to the whole work, and the other three parties are in charge of surveyors W. D. McKay, F. Wollaston and J. M. McGregor.

The party has altogether 128 miles to run, which must be completed by April 7, and about 50 miles have already been run. The work is a very arduous one. The snow is over six feet deep, and the country is both very broken and very heavily timbered. All the supplies have to be packed in on the men's shoulders, and from the railroad stations this very often means a pack of 15 miles over the rough ground.

PULLED THESE GAMBLERS.

Police Made a Raid and Came Nearly Drawing a Blank.

Police Officers Pypers and Hendon arrested three gamblers Thursday afternoon, and succeeded in breaking up what was probably the worst gambling den in the city. For some time past the police have been led to the belief that gambling was being carried on in some of the little buildings in the rear of Burns' butcher shop and Thompson's restaurant. An alley leads from Spokane street between the two former places, and at the left hand side of this alley is a little square house in which the gamblers were supposed to hold forth. The suspicion of the police led to an investigation, which resulted in their making the raid yesterday.

The room in which the gamblers were found was well fitted up with card tables and gave the appearance of having been used only for that purpose. The men gave their names as Jackman, Morris and Adair. They will be given a hearing at 10 o'clock this morning before Justice Townsend.

FINED ALL THREE.

The Gamblers' Cases Disposed of by Judge Townsend Yesterday. The three gamblers who were arrested Thursday afternoon in the raid on the gambling den on Spokane street presented a sorrowful appearance as they paraded before Police Magistrate Townsend at 10 o'clock Friday, at which time a large crowd of men had gathered to see the trial.

Henry Jackman was the first to be called up, Barrister Forin appearing in his defense, and pleading not guilty. Officer Pypers testified that he had at different times seen the prisoner gambling for money and that he had no other visible means of support, as also did Nightwatchman Kirkup. A couple of witnesses were called in Jackman's behalf, who said that the prisoner had been out prospecting and had located two claims in June, 1895, and that he had received in October of the same year as high as \$140 for his interests in these. The prisoner himself admitted that he had gambled more or less, but denied

following it for a profession, but he failed to make the magistrate see how he could live almost two years solely on the strength of having sold claims to the extent of \$140. He was ordered to pay a fine of \$25 and costs of the court, or to take the alternative of two months in jail.

The other two prisoners, Charlie Morris and J. A. Adair, were brought up together, Morris pleading guilty. Adair tried to maintain that he was a waiter and barkeeper, and that he was not following gambling alone for a living. He could not remember just when he had ever done any work of any kind, or had been in anyway engaged other than in gambling, and as Officer Pypers said he was gambling at the time of his arrest, he was sentenced to pay a fine of \$50 and costs or to serve a term of six months in jail. Morris was let off with months in jail. Jackman paid his fine and was released from custody, but as the others could not pay theirs, they were remanded back to jail.

LOT JUMPING AT SANDON

Harris Only Holds the Townsite as a Mineral Claim.

Every Vacant Lot Accordingly Occupied by Squatters, as Judge Forin's Decision Sets Aside His Title.

SANDON, Feb. 26.—[Special.]—Owing to the recent decision given by County Court Judge Forin at Nelson on the rights of holders of mineral claims every vacant lot in town was staked by squatters today. Great excitement prevails. This action is caused by the fact that J. M. Harris only holds the townsite by a crown grant obtained for a mineral claim. The fight promises to be a long and bitter one, as the property involved is getting to be very valuable.

Lucky Boy Incorporated.

The Lucky Boy Mining and Development company has filed articles of incorporation, the incorporators being S. L. Meyers, G. M. Lauridsen, W. W. Houghton, G. W. Myers and J. Ripplinger. The first meeting of the company was held last night and an organization was effected by the election of Samuel L. Meyers as president and general manager, George W. Myers vice president, John Ripplinger secretary, and W. W. Houghton treasurer. The company owns eight claims, five of them on Sullivan creek and three on the north fork of the Salmon river.

Trail-Robson Railway.

Tom C. Gray came up from Trail Friday to attend the Hotel Allan ball. He made a trip up the river recently and reports work progressing rapidly on the Trail-Robson railway. He says the contractors now have eight camps and the engineers two. About 250 laborers and over 100 teams are at work.

South Belt Filling Up.

The south belt of the city is enjoying quite a real estate boom, and within the last two months no less than 250 lots have been sold. Six new buildings were started Friday on the Montreal Syndicate lots, making 25 now in course of construction.

Work on the Sewer.

Superintendent Stanford reports that the pipe line sewer is progressing rapidly. The Columbia avenue tunnel is almost completed. The pipe is covered in from Kootenay street to the White House, and the gang Friday began excavating behind the White House and up Sour Dough alley.

Deal is Off and Another On.

A telegram from James F. Wardner states that the Montreal syndicate which he represents, will not take up its option on the Monita, Surpriase and Silverline. The owners of the Monita are gratified at the news as they have another purchaser ready to pay a better price for the property.

The Stemwinder in Ore.

Foreman Roberts, of the Stemwinder, which adjoins the Imperial on Lookout mountain, was in town Friday and reported he was now in 40 feet in the Stemwinder tunnel, and had just broken into a solid body of ore. He brought into a solid body of ore. He brought into a solid body of ore. He brought into a solid body of ore.

The only paper giving all the news is Roseland and the Trail Creek district of THE ROSSLAND MINER.

ROBERT DAVIES, MANAGER. WM. ROSS, CASHIER. The Dominion Brewery Co., Ltd. Brewers and Malsters. TORONTO. Manufacturers of the Celebrated WHITE LABEL ALE. Ask for it and see that our brand is on every cork. Our Ales and Porters have been examined by the best Analysts, and they have declared them Pure and Free from any deleterious ingredients. These Goods are Sold by H. J. Evans & Co., Suckling Bros., Nelson, Rossland.

J. WHITE, President. R. R. GAMEY, Secretary and Treasurer. J. Y. COLE, Vice-President. I. B. MILLER, Manager.

"The Pug" Columbia & Ontario Gold Mining Co. Waneta, B. C. Capitalization 750,000 Shares. Shares \$1.00 Par Value. Treasury Stock 250,000 Shares. This property is being worked by a crosscut tunnel, the mouth of which is 110 feet from the track of Nelson & Fort Sheppard Railroad. Test pits on the surface show solid ore at a depth of eight feet carrying gold, silver and copper. Treasury stock now on sale at 17 cents. Apply to R. R. GAMEY, Secretary-Treasurer, Gore Bay, Ont. Or J. B. MILLER, Manager, Waneta, B. C.

NEST EGG TO START

After Being Idle Ever Since the Latter Part of October.

WILL SHIP NEXT MONTH

Existing Engine and a Five Drill Compressor to be Started Tomorrow or Monday—Tram to be Constructed to the Railroad.

It is a pleasure to be able to announce that the Nest Egg, which is on the Deer Park mountain, is to start up again, with every reasonable hope of great development work being carried out and regular shipments beginning from the mine in about thirty days. Everything has been closed down since last October, but a few men have been employed late about the property making preparations for the change from hand to machine drills.

A visit to the Nest Egg yesterday found the hands in the bustle of preparation for an immediate start-up. A large hoist-house has been built over shaft No. 3, which has been substantially timbered and new guides put in. A heavy automatic hopper is completed and in readiness. The hoist engine, of 60-horse power, is solidly bedded and ready to be coupled up, and by its side is a five-drill hand compressor. Next to that is a tubular boiler, larger than the mine is likely to require for some time. All the machinery is from the Rand Drill company of Sherbrooke, Que. Yesterday they were only awaiting the arrival of wood to fire up, and tomorrow, or at latest Monday morning, things will be humming at the Nest Egg.

The No. 3 shaft is down 55 feet, of which the water now occupies 35 feet, but Superintendent Aldrich says that with a patent automatic barrel he can sink this out in a day. The ore in the shaft is promising, as from there down to it assayed \$12, and from there down to 20 inches to two feet. From the 20 inch level in this shaft a drift in a 50 foot level in this shaft was in 25 feet, on the vein, when work was suspended. The first work to be done will be to sink this shaft down to the 100-foot level, and a gang will also be put in the drift, which will be carried to shaft No. 2, a distance of about 300 feet. This shaft is 50 feet on very nearly the same ore. The company has also another shaft northwest from the hoist house, which is down 47 feet. Here there is a vein of a more mixed character. As soon as work on the shaft No. 3 and its drift is fairly under way, the construction of a tramway down to the Columbia and Western railroad will be begun. The mine is excellently situated for the tram will be only 300 feet, on an easy grade. There are already 125 tons of ore on the dump, and it is confidently expected that the tram will be in running order and shipments will be begun within 30 days. The ore on the dump is similar in character to the ore on the north belt generally, except that some of it carries about 3 per cent more of copper.

North Fork Claims Incorporated.

One of the latest mining companies to be incorporated is the Mannamed Gold Mining company, which is formed to develop and operate the Carlyle, Berwick and Masel claims, on the north fork of the Salmon, with a capital stock of \$1,500,000. The trustees of the new company are: Alexander E. McLennan, of Alexandria, Ont.; J. E. Craze, of New Westminster, B. C.; F. Stapleton Hobbs, Montreal, B. C.; F. Stapleton Field, Mannamed, England. Contracts were let yesterday for an 80-foot tunnel and a 50-foot shaft on the Carlyle and Berwick.

Gladstone Mine Looking Well.

Judge W. W. Spinks, who was in the city Friday on his way to Grand Forks, says there is great activity at Camp Hewitt on Okanagan lake, and that the Gladstone company has received an encouraging report from W. A. Carlyle, expert mineralogist. Mr. Carlyle says that if they have one of the specimens submitted, and a body of it, they have certainly got a mine. The judge says the Gladstone is shipping two or three tons of ore to the Hall smelter and to the Tacoma and Everett smelters. He believes the ore will average \$40 a ton.

Copper Giant Gold Mining Company, Ltd. Ly.

CAPITAL STOCK, 1,000,000 SHARES. Treasury Stock 300,000 Shares. Fully Paid Up and Non-Assessable.

Officers. PRESIDENT, H. B. SMITH (M. Inst. C. E., etc.), Roseland, B. C.; VICE-PRESIDENT, R. J. BEALEY, (of the R. J. Bealey Co., Ltd.) Roseland, B. C.; MANAGER, WM. G. MERRYWEATHER, of Roseland, B. C.; SECRETARY AND TREASURER, A. E. TORELLE, of Roseland, B. C. Directors. H. B. SMITH; R. J. BEALEY; B. H. MOORE; JOHN R. REAVIS, Pres. Roseland Miner Printing & Publishing Co., Ltd.; A. E. TORELLE; WM. G. MERRYWEATHER.

Engineer's Report.

Extract from a report by Harry Gager, mining engineer: "This group consisting of the Gray Copper, Copper Giant and Blue Copper, all being full claims, fifteen hundred by fifteen hundred feet, are situated on the southeast slope of Lookout Mountain, about ten miles south of Trail, four and one-half miles north of Waneta, on the Nelson & Fort Sheppard Railway, three and a half miles west of Paulton's Landing on the Columbia River and one and one-half miles north of the International boundary line, in the Trail Creek mining division of West Kootenay district, British Columbia, and adjoining the Trail & Waneta Gold and Copper Mining Company's property on the south."

Workings and Outcrop.

"The development so far consists of several open cuts along the center line on the outcrop, and a shaft on the Copper Giant six by ten feet on the surface by eight feet in depth, tapering to about five by eight feet at the bottom. In all, which is much broken on north and south sides and to the east end. On the bottom and west end it was comparatively solid. The north and east faces of this shaft are cut irregularly with stringers of quartz, varying from one-half

to five inches in width, and giving evidences of having been forced up through the formation.

"These stringers, or quartz seams are highly mineralized, carrying iron and copper pyrites, malachite, galena and chlorides, assaying from samples taken from various places from a trace to \$4 in gold, 1 1/2 to 6 1/2 per cent in copper and from 15 to 49 2-10 ozs. in silver. One assay for lead gave one per cent. The general trend of these quartz seams or stringers is to the east, pitching at an angle of about forty degrees.

"In my opinion these stringers are the broken condition of the formation in which they are world indicate that they came from a large body of mineral lying below and to the east of the outcrop, which could be opened up either by a crosscut tunnel or by running an incline following along the course of these stringers."

Conclusion.

"The showing made on the Copper Giant is in my opinion sufficient to justify the expenditure of both time and money in either crosscutting or following the quartz seams, as there is no doubt in my mind that by doing so a large and valuable ore body will be found."

TREASURY SHARES.

The company is of the belief that there is a fair chance to find a valuable mine in this property and has gone into the enterprise after a careful consideration of all the facts obtainable. The officers and directors are gentlemen of position who would not embark in an undertaking of this kind unless they believed there was a good chance for success. Fifty thousand treasury shares will be offered at 10 cents a share. There are no salaried officers and all the money paid in will go to the development of the property.

50,000 Treasury Shares at 10 Cents per Share.

Address A. E. TORELLE, Secretary, Roseland.

Red Top Mountain Mining Company, INCORPORATED UNDER THE LAWS OF WASHINGTON.

Capital Stock 1,000,000 Shares. Treasury Stock 200,000. Shares Fully Paid and Non-Assessable.

OFFICERS. WM. H. REID, President and Manager. EDWARD S. ORR, Vice-President. J. L. McMURRAY, Secretary. J. G. COTTON, Treasurer. A. BRIERWOOD, Superintendent. GEORGE B. NICOLL, Trustee. C. C. WOODHOUSE, Consulting Engineer. M. K. SNELL, Attorney.

Three Full Claims and Millsite of 20 Acres Paid for and Free of Debt.

Rich Galena Mines.

Pay ore on the dump. Vein seven feet wide. Situated in Stevens County, Washington, five miles east of railroad depot Waneta, B. C. and Boundary City, Wash, three miles south of the British Columbia line. 100,000 shares of Treasury Stock for sale, proceeds to be applied to the purchase of concentrating plant and additional development.

25,000 Shares now Offered at 10 Cents.

Weeks, Kennedy & Co., Roseland Brokers. A statement will be forwarded quarterly to each registered stockholder.

J. K. Clark & Co., BENHAM & GRIFFITH,

Mines and Mining. Wholesale Grocers and Tobacconists, SPOKANE, WASH.

Try Tiger Tea,

Packed in Pound and Half Pound Papers. Columbia Ave., Roseland, B. C.

KASLO N... Charleston Add Shipping M... MR. FOSTER... Canada's Ex-P... queted by H... Favors the... Crow's Nest P... KASLO, Feb... Charleston mine water about half known Whitewater to the shipping p... A carload of ore fr... over the Kaslo... Tuesday last, a... frequent interval... ing developed with... J. E. Mitchell for... hauled it from Ko... Matheson. The Briggs bloc... recently acquired... Hill Mining com... amined by H. J... work will be... turn in about a... is the president of... J. Kelly the local... James Anders... Little Phil at Ains... Wallace obtained... last autumn. Th... gin development... employ a force of... may be required... has already been... It joins the B... acquired by Fred... nel has already... Drifts from this... for 210 feet and 10... without any bre... either claim. Bo... Business at this... ing the present... there were record... ing claims and in... consideration in... single dollar up... was the price pai... the Granite Mou... for the Log Cab... properties. Mr. Fo... The Hon. G. B... finance in the late... from Nelson on... entertained at stu... at the Kaslo hotel... Covers were laid... tained was a m... Mayor Green pre... right the guest of... his left ex-Mayor... Archer and T. M... reply to the local... commons was r... delightful talk, th... In a conversation... pleasure it gave h... friends in an inf... their pleasure. He... several friends fr... New Brunswick. was of a private n... be fair to give eve... ter's chat with hi... be improper to r... recognized the n... struction of the... way, and that the... shown their inte... large grant in ai... He added that an... scheme for const... posed by the gove... the aid and suppo... He also referred... ment to the alien... been passed by th... gress. He did n... signed by the pre... should be taken b... section of its own... Several other sp... pointing to the... liberal-conservati... its brightest citi... occasion. A most... spent and much e... Mr. Foster ren... during Tuesday s... leading citizens... visiting the Kaslo... of the Kootenay... guidance of the... Alexander, and... with what was... that the process... covered several... had desired to be... On Tuesday e... Murray, eastern B... Canadian Gold... development and... Herbert Outhbert... and Chas. A. Wi... in Kaslo and ha... Hon. G. E. Foste... the company. M... try left on We... where the day was... some of the mine... ery in that secto... New Iron... A. R. Barron, Kootenay Iron... asked the city c... documents or pri... in the event of h... his contemplated... The council on r... reply that it won... the ratifiers... from taxation fo... S. Millington, began the erecti... block on the sou... adjoining the c... have a brick fro... tion. It will be... D. C. McGreg... build a handson... and offices on E... show a handson... reach from Fron... rear will be of... utilized for a wa... street portion of... the ground floo... Gregor will also... dental block on... The Kaslo ban... and obtained co... chamber for pr...

KASLO NEWS NOTES

Charleston Added to the List of Shipping Mines in Kootenay.

MR. FOSTER ENTERTAINED

Canada's Ex-Finance Minister Entertained by His Political Friends—Favors the Construction of the Crow's Nest Pass Railway.

KASLO, Feb. 24.—[Special.]—The Charleston mine, situated on White-water about half a mile above the well-known Whitewater mine, may be added to the shipping properties of the Slocan. A carload of ore for shipment came down over the Kaslo & Slocan railway on Tuesday last, and more will follow at frequent intervals. This property is being developed with satisfactory results by J. E. Mitchell for Winnipeg parties, who bonded it from Robert Shiell and William Matheson.

The Briggs block of 10 mineral claims, recently acquired by the Slocan-Liberty Hill Mining company, has been examined by E. J. Kelly of Rossland, and work will begin at once on his return in about a fortnight. A. D. Jones is the president of the company, and E. J. Kelly the local manager. James Anderson and John J. Cook have been making an examination of the Little Phil at Ainsworth, of which Clarke Wallace obtained a controlling interest last autumn. They have decided to begin development work at once and will employ a force of from 12 to 20 men, as may be required. Considerable work has already been done upon the property. It adjoins the Black Diamond, recently acquired by Fred Steele, and a joint tunnel has already been run for 320 feet. Drifts from this tunnel have been run for 210 feet and 100 feet of the properties without any break in the ore body on either claim. Both claims are fractional. Business at the mining recorder's office in this city has been quite brisk during the present week. Last Tuesday there were recorded 24 transfers of mining claims and interests in claims with a consideration in each ranging from a single dollar up to \$12,000. The latter was the price paid by the president of the Granite Mountain Mining company for the Log Cabin and White Grouse properties.

Mr. Foster's Visit. The Hon. G. E. Foster, minister of finance in the late government, came up from Nelson on Monday last. He was entertained at supper the same evening at the Kaslo hotel by his political friends. Covers were laid for 25 and the entertainment was a most enjoyable function. Mayor Green presided, having at his right the guest of the evening, and on his left ex-Mayor John Keen, F. E. Archer and T. M. Gibson. Mr. Foster's reply to the toast in honor of the house of commons was rather in the way of a delightful talk, than a set speech.

In a conversational way he told of the pleasure it gave him to meet his political friends in an informal way, and the further pleasure he had in recognizing several friends from his own home in New Brunswick. The entertainment was of a private nature and it might not be fair to give even a resume of Mr. Foster's chat with his friends. It cannot be improper to say, however, that he recognized the necessity for the construction of the Crow's Nest Pass railway, and that the late government had shown their interest by promising a large grant in aid of the undertaking. He added that any fair and equitable scheme for constructing the road proposed by the government would receive the aid and support of the opposition. He also referred to the Corlies amendment to the alien labor act, which had been passed by the United States congress. He did not think it would be signed by the president, but if it should become law, he thought some action should be taken by Canada for the protection of its own people.

Several other speeches were made, all pointing to the confidence which was still retained in the principles of the liberal-conservative party and in one of its brightest exponents, the guest of the occasion. A most pleasant evening was spent and much enthusiasm shown. Mr. Foster remained over in Kaslo during Tuesday and met many of the leading citizens. In the afternoon he visited the Kaslo City Sampling works under the guidance of the president, Mr. George Alexander, and was much impressed with what was shown him. He said that the processes were new to him and covered several points with which he had desired to become acquainted.

On Tuesday evening Messrs. C. B. Murray, eastern manager for the British Canadian Gold Fields Exploration, Development and Investment company; Herbert Cuthbert, his western manager, and Chas. A. Young, his expert, arrived in Kaslo and had a consultation with Hon. G. E. Foster, who is president of the company. Mr. Foster and Mr. Murray left on Wednesday for Sandown where the day was spent in inspecting some of the mines and mining machinery in that section.

New Iron Works Company. A. R. Barron, under the title of the Kootenay Iron Works company, has asked the city council what material inducements or privileges it would accord in the event of his deciding to establish his contemplated works in this city. The council on Friday last decided to reply that it would place a bylaw before the ratepayers granting an exemption from taxation for ten years.

S. Millington, the brick mason, has begun the erection of a large business block on the south side of Front street, adjoining the customs house. It will have a brick front and concrete foundation. It will be a neat structure. D. C. McGregor is also preparing to build a handsome building for stores and offices on Front street. The plans show a handsome building, which will reach from Front to Water street. The rear will be of two stories, which will be utilized for a warehouse, while the front portion will be used for offices and a store. Mr. McGregor will also build a capacious residential block on B. avenue.

The Kaslo band has been reorganized and obtained consent to use the council chamber for practicing purposes. It will be composed of about 14 persons, most of whom are good musicians, who hope to make a success of the new undertaking.

Personal. J. Fred Ritchie of Rossland passed through Kaslo on his way to the Slocan on Wednesday last. Fred Steele, treasurer of the Ibcx Mining company of Slocan, left for Winnipeg on Tuesday morning last. Alexander Menzies, late route agent for the Northern Pacific Express company on the Nelson & Fort Sheppard railway, will open an express route on the Kaslo & Slocan railway on Monday next. He will have agencies at different points. The new business will supply a want which has been felt by merchants at either end and especially along the route. It will be called the Kaslo-Slocan express. S. S. Taylor is the most recent accession to the provincial bar. He comes from Edmonton, Alb., where he held a high position and a large practice as a barrister. He will locate at Nelson.

LETTERS TO THE EDITOR.

The Eric Company. SEATTLE, Wash., Feb. 20. EDITOR MINER—Sir: Please inform me, through your valuable paper, what caused the gradual fall and late grand "slump" in Eric stock. What do you know of the mine and the management? Yours faithfully, STOCKHOLDER.

[The manager of the Eric Company is George Plunder of the Colonna. The directors are F. W. Rolt, James Hunter, W. A. Campbell and W. H. Lancaster. The secretary, Edward Baillie, will furnish any stockholder on application with the company's balance sheet and statement of accounts. The work done on the property consists of one shaft 85 feet deep, with a 10-foot crosscut on the 50-foot level and one of 17 feet at the bottom. Surface work has also been done. No work is being done at present, as the company is out of funds. It has 150,000 shares still left in the treasury. The management now intends raising some money in the early summer and doing some more prospecting work before resuming development work. The claim has been crown-granted since the company acquired it. The slump in the price is probably owing to the fact that one large block of promoters' stock is not in the pool.—Ed.]

Spokane Resolutions.

Resolved, that we, citizens of Spokane, in mass meeting assembled, do earnestly protest against the so-called Corlies amendment bill as being highly detrimental and destructive to the mining and all other industries in the northwest, and tending to destroy the present existing friendly relations, commercial and otherwise, between the Dominion of Canada and our own country, and we respectfully demand that our congressional delegation use their best efforts in procuring the president's veto to this highly obnoxious measure.

Resolved, that we, citizens of Spokane, in mass meeting assembled, do urge that the legislature of the state of Washington submit to the voters of this state the amendment to the constitution that shall modify the provision preventing non-resident holding real estate by purchase, so that our neighbors in the Dominion may have the privilege of enjoying the right to purchase and own a home in the state of Washington.

Resolved, that we, citizens of Spokane, in mass meeting assembled, do urge that the legislature of the state of Washington submit to the voters of this state the amendment to the constitution that shall modify the provision preventing non-resident holding real estate by purchase, so that our neighbors in the Dominion may have the privilege of enjoying the right to purchase and own a home in the state of Washington.

Resolved, that we, citizens of Spokane, in mass meeting assembled, do urge that the legislature of the state of Washington submit to the voters of this state the amendment to the constitution that shall modify the provision preventing non-resident holding real estate by purchase, so that our neighbors in the Dominion may have the privilege of enjoying the right to purchase and own a home in the state of Washington.

Resolved, that we, citizens of Spokane, in mass meeting assembled, do urge that the legislature of the state of Washington submit to the voters of this state the amendment to the constitution that shall modify the provision preventing non-resident holding real estate by purchase, so that our neighbors in the Dominion may have the privilege of enjoying the right to purchase and own a home in the state of Washington.

Resolved, that we, citizens of Spokane, in mass meeting assembled, do urge that the legislature of the state of Washington submit to the voters of this state the amendment to the constitution that shall modify the provision preventing non-resident holding real estate by purchase, so that our neighbors in the Dominion may have the privilege of enjoying the right to purchase and own a home in the state of Washington.

Resolved, that we, citizens of Spokane, in mass meeting assembled, do urge that the legislature of the state of Washington submit to the voters of this state the amendment to the constitution that shall modify the provision preventing non-resident holding real estate by purchase, so that our neighbors in the Dominion may have the privilege of enjoying the right to purchase and own a home in the state of Washington.

Resolved, that we, citizens of Spokane, in mass meeting assembled, do urge that the legislature of the state of Washington submit to the voters of this state the amendment to the constitution that shall modify the provision preventing non-resident holding real estate by purchase, so that our neighbors in the Dominion may have the privilege of enjoying the right to purchase and own a home in the state of Washington.

Resolved, that we, citizens of Spokane, in mass meeting assembled, do urge that the legislature of the state of Washington submit to the voters of this state the amendment to the constitution that shall modify the provision preventing non-resident holding real estate by purchase, so that our neighbors in the Dominion may have the privilege of enjoying the right to purchase and own a home in the state of Washington.

Resolved, that we, citizens of Spokane, in mass meeting assembled, do urge that the legislature of the state of Washington submit to the voters of this state the amendment to the constitution that shall modify the provision preventing non-resident holding real estate by purchase, so that our neighbors in the Dominion may have the privilege of enjoying the right to purchase and own a home in the state of Washington.

Resolved, that we, citizens of Spokane, in mass meeting assembled, do urge that the legislature of the state of Washington submit to the voters of this state the amendment to the constitution that shall modify the provision preventing non-resident holding real estate by purchase, so that our neighbors in the Dominion may have the privilege of enjoying the right to purchase and own a home in the state of Washington.

Resolved, that we, citizens of Spokane, in mass meeting assembled, do urge that the legislature of the state of Washington submit to the voters of this state the amendment to the constitution that shall modify the provision preventing non-resident holding real estate by purchase, so that our neighbors in the Dominion may have the privilege of enjoying the right to purchase and own a home in the state of Washington.

Resolved, that we, citizens of Spokane, in mass meeting assembled, do urge that the legislature of the state of Washington submit to the voters of this state the amendment to the constitution that shall modify the provision preventing non-resident holding real estate by purchase, so that our neighbors in the Dominion may have the privilege of enjoying the right to purchase and own a home in the state of Washington.

Resolved, that we, citizens of Spokane, in mass meeting assembled, do urge that the legislature of the state of Washington submit to the voters of this state the amendment to the constitution that shall modify the provision preventing non-resident holding real estate by purchase, so that our neighbors in the Dominion may have the privilege of enjoying the right to purchase and own a home in the state of Washington.

Resolved, that we, citizens of Spokane, in mass meeting assembled, do urge that the legislature of the state of Washington submit to the voters of this state the amendment to the constitution that shall modify the provision preventing non-resident holding real estate by purchase, so that our neighbors in the Dominion may have the privilege of enjoying the right to purchase and own a home in the state of Washington.

IN THE HEART OF THE MINES.

New Town of Wild Horse the Metropolitan of Salmon River.

Wild Horse, Feb. 25.—[Communicated.]—Wild Horse is situated on the east side of Salmon river and is fast developing into one of the leading mining centers of the Kootenay district. Wild Horse is situated about one-half mile south of the mouth of Wild Horse creek and promises to be the distributing point for all the surrounding country. It is about six miles across to the head waters of the North fork and about the same distance from the leading mines on the Wild Horse.

This little place is making giant strides toward becoming a town. In three weeks it has jumped from a small place of two or three houses. All day long one can hear hammers and axes ringing and houses are springing up in all directions.

Five hotels are now under construction. One owned by David Keeffe will be ready to open in about two weeks and will be first-class in every respect. The one hotel now running, the Wild Horse, is reaping a great harvest and is crowded to overflowing, a guest considering himself in luck if he can rustle a bed on the floor.

In the surrounding country we have the Ymir, Elise, Parker group, Tamarack

and several other promising prospects. The Ymir is now employing 25 men and is making a fine showing. Wild Horse has a very bright future, and many people consider it will be one of the leading towns of the district on account of the rich mines in the vicinity.

We have two pack trains, a store and several other businesses will shortly be opened and in the near future Wild Horse will be as familiar to the outside world as some of the older established towns.

THE WEEKLY ROSSLAND MINER gives you all the news of Kootenay once a week for \$2 a year. Subscribe for it.

The grandest view of Rossland and its most leading mines can be seen from the

St. Charles Hotel

Rates 50c, 75c, \$1 per day. Fine spring beds, 50c. Meals 25c. German cooking. The hotel is projected from all city free by a granite bluff and still centrally located on COLUMBIA AVE., Opposite Electric Light Office.

A. ERSKINE SMITH, M. E. Late of Coolgardie, W. A. and Johannesburg, S. A.

G. F. WHITEMAN, Tylor Hill, Canterbury, England.

Smith & Whiteman, Brokers. Rossland, B. C.

Mining Properties Reported on. Cash Buyers of Mineral Claims with Clear Titles in Trail Creek District.

Can recommend numerous good stocking propositions to speculators. Correspondence invited.

Cable Address, "Erskine" Rossland. Code: Moreing & Neel. P. O. Box 257.

The American Eagle Gold Mining Co.

Now being formed. This property is situated on the North Fork of the Salmon river, and is a full sized claim. The ledge is 9 feet wide and is uncovered for 400 feet. Samples taken from the surface assay from \$45 to \$67 per ton. A limited number of shares remain unsubscribed for and are now offered at the ground floor price of two and one-half cents per share. This is absolutely the best investment in mining interests ever offered to the public. Full particulars and prospectus furnished upon application.

RANDELL & POLLETT, Mines and Mining Shares.

SIX DOORS EAST OF POSTOFFICE. Cable Address, "Auric," Rossland, B. C. Use Moreing & Neel's and Clough's Codes.

Union Warehouse & Machine Co., Manufacturers' Agents for

Farm and Freight Wagons, Vehicles and Agricultural Implements of All Kinds.

SEND FOR OUR CATALOGUE, MAILED FREE ON APPLICATION. Spokane, Washington

BRUSHES

For Painters, Varnishers, Kalsominers, Artists, etc., Household, Toilet and Stable Use. MANUFACTURED BY CHAS. BOECKH & SONS, TORONTO, ONT. Always Reliable and as Represented.

Toronto Mining Agency

Mining Brokers. We are prepared to place on the market throughout the eastern provinces the treasury stock of mining companies in Trail Creek, Boundary, Slocan and other British Columbia mining districts. 69 YONGE STREET, TORONTO, ONT. M. R. GREGG, Manager. JAMES C. SHIELDS, Sec.-Treas.

Burlington Route TO CHICAGO

NEW SHORT LINE FROM MONTANA, IDAHO AND PUGET SOUND A. C. SHELTON, General Agent, 250 Washington St., PORTLAND, ORE.

THE OLD GOLD

Quartz and Placer Mining Company, Ltd.

Capitalization 1,500,000 Shares. Fully Paid and Non Assessable. Par Value \$1 Each. 500,000 Treasury Shares.

OFFICERS.

Geo. A. Pounder, President. Geo. N. Taylor, Vice-President. M. F. Chesnut, Secretary. J. M. Miller, Treasurer.

The rich quartz and placer property of this company is located on the North Fork of the Salmon River within 3/4 of a mile of the North Fork station on the N. & F. S. Ry. and comprises the following claims to wit: Grace C., Gem, M. C. T., Little Chief, Lillian Ray and Venture.

Development work is being rapidly pushed on these properties and handsome returns in both quartz and placer have been already obtained.

A limited amount of treasury stock is now on the market at 5 Cents.

Purchase now and get the benefit of the first advance. M. F. CHESNUT, Sec'y.

Office 4 Doors East of Post Office, Rossland, B. C. CLOUGH'S CODE.

To Talk to Capital in the East

You must Advertise in the Toronto Mail and Empire

The Organ of the Great Conservative Party of Canada.

The Mail and Empire is to Ontario what the Times is to England or the New York Herald to the United States. Address: THE MAIL, Toronto, Canada.

Spokane Coffin Factory Co., Manufacturers of

Caskets and Coffins.

Of every description. We have in connection with our factory an experienced Undertaker and Embalmer. Telegraph orders a specialty. Our office is open day and night. 119 and 121 Post St., SPOKANE, WASH.

QUEEN'S HOTEL

McGAW & WINNETT, Proprietors.

One of the largest and most comfortable hotels in the Dominion of Canada, being adjacent to the lake, commands a splendid view of Toronto Bay and Lake Ontario. It is well known as one of the coolest houses in summer in Canada, and is elegantly furnished throughout. Rooms en suite with bath rooms attached on every floor.

THE QUEEN'S has been liberally patronized by royalty and nobility during their visits to Toronto, and among those who have honored it with their patronage are: His Imperial Highness the Grand Duke Alexis of Russia; Their Royal Highnesses Prince Leopold, Prince George, Princess Louise and the Duke and Duchess of Connaught; the Marquis of Lorne, the Earl and Countess of Dufferin, the Marquis and Marchioness of Lansdowne, Lord and Lady Stanley of Preston, the Earl and Countess of Aberdeen and the best families.

TORONTO, CANADA.

LOTS. Good Business Lots on Thompson Avenue. Lots on Columbia Avenue.

Money to Loan. Fire, Life and Accident Insurance.

ROLT & GROGAN, Mining and Financial Brokers. Columbia Avenue.

Weekly Rossland Miner.

Published Every Thursday by the ROSSLAND MINER PRINTING & PUBLISHING CO. LIMITED LIABILITY.

JOHN R. REAVIS, President. H. W. C. JACKSON, Editor and Manager.

LONDON OFFICE: C. J. WALKER, 108 Bishopsgate St., Within E. C.

MONTREAL OFFICE: JOHN STOWELL EVANS.

TORONTO OFFICE: CENTRAL PRESS AGENCY, Ltd., 53 Yonge St.

SPOKANE OFFICE: ALEXANDER & Co., Advertising Agents, Room F, First National Bank Building.

TRAVELLING AGENTS: With the exception of the above, C. H. MARSH, CHARLES H. LAMB, F. H. COOPER, and I. N. HAM, our travelling agents, are the only persons authorized to make adverbial contracts or collect for subscriptions.

THE SUBSCRIPTION PRICE OF THE WEEKLY ROSSLAND MINER for all points in the United States and Canada is Two Dollars a year or One Dollar and Twenty-five Cents for six months; for all other countries Two Dollars and Fifty Cents a year—invariably in advance. The subscription price of the DAILY MINER is \$1 per month, \$5 for six months or \$10 for one year; foreign, \$12.50, also in advance.

RESTORE SURFACE RIGHTS. It must be admitted that land titles in Kootenay are pretty badly mixed.

The remedy for this state of affairs is obvious, and it is as easy as falling off a log. While it is true that most of the land in Kootenay, or at least southeast Kootenay, is granted to or reserved for railways, there is still some territory which is vacant crown land.

Among our specials from Spokane Friday was a dispatch which is full of significance to Rossland and Kootenay, more especially since the visit this week of W. H. Hurlbut, B. Campbell and other O. R. & N. officials.

So far as we know no man or woman in Rossland has had to go hungry yet, and so far as that is concerned there is probably no excuse for any willing man being out of work since a few of them could find work at \$2 a day on the Trail-Robson railway.

THE CROW'S NEST PASS line must be constructed at once. In every possible way both governments must open up the southern part of the province that homes and work may be provided for the coming thousands.

Both men and women who are out of money had better keep out of Rossland at present. More people have been coming here in search of work than the country can give employment to at this season of the year.

THE MINER yesterday stated that several working girls were here in straightened circumstances looking for positions. While this is the case it would surely be more becoming if some of the leading families would dispense with their Chinese help and give their countrywomen a chance to earn an honest living.

THE man who burglarized the jewelry store on Wednesday evening is probably still in Rossland. If he were a professional he would have been afraid to attempt to escape the same evening via Northport, as he would certainly have expected to find that avenue guarded, which it was not.

NOTHING has been more detrimental to Rossland than the alleged uncertainty as to title to platted property immediately adjoining the townsites. Sandon is in even a worse fix. The same trouble is threatened at Brandon and Slocan City, and it is certain the same trouble will recur in every new town in Kootenay so long as the dual system of titles to mineral claims continues.

WHO IS CHIEF OF POLICE? THE MINER desires to inquire of Chief Constable Hussey who is the responsible chief of police in Rossland, and also what that officer is expected to do in the case of a burglary such as was committed Wednesday night.

WE have a dual object in seeking this information. We want to know to whom the public is to look for protection, and we also want to ascertain what steps provincial officers are instructed or authorized to take to prevent the escape and secure the arrest of criminals.

THE public is entitled to this information in view of the burglary of Wednesday as we have ascertained that no steps at all were taken that evening by the provincial authorities here to prevent the escape from the country of the persons connected with the robbery of Challoner, Mitchell & Spring's store.

Recorder Kirkup, who has enjoyed the prestige of being the local chief of police, can not possibly occupy that

responsible position, as he took no steps to prevent the robbers escaping from the country with their booty, but contented himself to all appearances with learning the particulars of the robbery and then adjourning to the theatre to spend the evening without issuing any instructions to his supposed subordinates.

WE are further informed that as late as Thursday noon neither the provincial chief of police at Victoria nor the police authorities of Spokane or other neighboring American cities had been notified of the robbery except by private wires from the firm whose premises were burglarized or the public information contained in the newspapers of their respective cities.

A WORD OF WARNING.

In the past week over twenty cases have been brought to THE MINER'S attention of women coming to Rossland in search of work, who arrived here practically without a dollar. This is simply criminal folly on the part of the individuals in question, and that such conduct has not already produced a tragedy or, at least, a scandal, is more owing to good luck than anything else.

Rossland is well supplied with female labor of all kinds. Numbers of girls have been taken in by families who had no need of help. These girls are not, in most cases, earning any wages and their presence in the camp results only in a lowering of the scale of wages for all kinds of work for women.

This kind of immigration should cease. The country is not ready for it, and its continuation will result in nothing but injury to the women already in the camp and those who come hereafter.

CANADA'S OPPORTUNITY.

Among our specials from Spokane Friday was a dispatch which is full of significance to Rossland and Kootenay, more especially since the visit this week of W. H. Hurlbut, B. Campbell and other O. R. & N. officials. The news in question is nothing less than that the Union Pacific system has determined to change its western terminus from Portland to Spokane, and in doing this it will so arrange the schedule of its passenger trains as to insure close connections to Rossland, and, in reality, make this town its Pacific terminus.

The reason given for preferring Spokane to Portland as a western terminus for the Union Pacific system is admitted to be on account of the increasing travel from the east to Kootenay, and it is in order to accommodate and secure its share of this business that the Union Pacific and O. R. & N. systems have determined on such radical action.

This action on their part fully bears out what THE MINER has said editorially on the prospects of immigration this year. When a great transcontinental line changes the policy it has pursued for twenty years it is not done without due consideration. It is therefore certain that we are going to have a new problem to face in this province, and THE MINER has been doing its best to bring a realization of this to both the dominion and provincial authorities, who alone are able to prescribe a solution for it.

The Crow's Nest Pass line must be constructed at once. In every possible way both governments must open up the southern part of the province that homes and work may be provided for the coming thousands. It may look like a big undertaking, but the returns will be much more quick and certain and fully as important to Canada as those resulting from the construction of the C. P. R. Canada's golden opportunity is at hand. Let her grasp it while she may.

EDITORIAL NOTES.

TRAIL has a new weekly. It is called the Trail Creek Miner.

THE Wall Street Reporter offers to publish at its own expense a British Columbia mining manual if the officers of incorporated companies will furnish it with the necessary information.

BOTH men and women who are out of money had better keep out of Rossland at present. More people have been coming here in search of work than the country can give employment to at this season of the year.

THE MINER yesterday stated that several working girls were here in straightened circumstances looking for positions. While this is the case it would surely be more becoming if some of the leading families would dispense with their Chinese help and give their countrywomen a chance to earn an honest living.

THE man who burglarized the jewelry store on Wednesday evening is probably still in Rossland. If he were a professional he would have been afraid to attempt to escape the same evening via Northport, as he would certainly have expected to find that avenue guarded, which it was not.

NOTHING has been more detrimental to Rossland than the alleged uncertainty as to title to platted property immediately adjoining the townsites. Sandon is in even a worse fix. The same trouble is threatened at Brandon and Slocan City, and it is certain the same trouble will recur in every new town in Kootenay so long as the dual system of titles to mineral claims continues.

THE action of the police authorities in rounding up the tin-born element in town yesterday partakes somewhat of the principle of locking the stable door after the horse is stolen. However, as this will probably not be the last robbery, if the burglars who broke into Challoner, Mitchell & Spring's store are not arrested and convicted, their action may not be so untimely after all.

FOR some time past there has been a considerable number of laboring men with very limited means out of work in Rossland. This number is being rapidly augmented by the arrival in camp of others seeking employment, who are, in most cases, unfitted to do such work as offers, and frequently have no money to fall back on to sustain them while here looking for work or to take them back home. To all such men THE MINER would say, do not come to Rossland. There are plenty of laborers here—enough, in fact, to fill all the jobs which will be vacant in the next two months.

THE outside press will confer a favor on the people of this community if it will inform the public that there are more laborers now in Rossland than can find work, and that there will soon be a little army of unemployed if laborers without resources continue to pour into the district at the present rate. It is impossible for Kootenay to provide work for men who can do nothing but manual or clerical work at the rate such persons are coming to the country. Prospectors, miners and people with a little capital can find good opportunities in the Kootenay. Others are only inviting misfortune by coming here at present.

WE thoroughly agree with the people of Spokane in their strictures on the Corliss amendment voiced in the resolutions wired to President Cleveland requesting him to veto the alien labor law. Their action in petitioning their legislature to submit an amendment to the state constitution to enable aliens to acquire land by purchase, shows that they have profited by their intercourse with British Columbia. The liberal spirit they now manifest is more becoming to republicans than that expressed in the two laws in question.

So far as we know no man or woman in Rossland has had to go hungry yet, and so far as that is concerned there is probably no excuse for any willing man being out of work since a few of them could find work at \$2 a day on the Trail-Robson railway. There is no work of this kind for women to fall back on however, and if they have no money they should wait for a better reason or go elsewhere at the present time. Rossland is prosperous and charitable enough to take care of a good many destitute men and women, but there is a limit and it will not do to press it too closely.

Bank of BRITISH NORTH AMERICA.

Incorporated by Royal Charter. Paid-Up Capital \$4,800,000. Reserve Fund 1,300,000. London Office: 3 Clements Lane, Lombard St. E. C.

Court of Directors: J. Brodie, John James Carter, Gaspard Farrar, Richard H. Glyn, Henry K. Farrar, Ed. Arthur Hoare, H. J. B. Kendall, J. J. Kingsford, Frederick Lubbock, George W. Whistman.

Head Office in Canada, St. James St., Montreal. H. STEKEMAN, E. STANOR, Inspector. General Manager.

Branches in Canada: London, Brantford, Paris, Hamilton, Toronto, Kingston, Ottawa, Montreal, Quebec, St. John, N. B., Brandon, Winnipeg, Man., Fredericton, N. B., Halifax, N. S., Victoria, Vancouver, Rossland, and Sandon, B. C.

Agents in the United States: Spokane: Traders National Bank and Old National Bank. New York: (55 Wall Street) W. Lawson and J. C. Welsh. San Francisco: (74 Sansome Street) H. M. J. McMichael and J. R. Ambrose.

Bank of Montreal.

Capital, All Paid up, \$12,000,000. Res. 6,000,000. SIR DONALD A. SMITH, President. HON. GEO. A. DRUMMOND, Vice-President. E. S. CLOUSTON, General Manager.

Rossland Branch. Branches in London (England), New York, Chicago.

Buy and Sell Sterling Exchange and Cable Transfers. Best Commercial and Travellers Credits available in any part of the world. DRAFTS ISSUED; COLLECTIONS MADE; ETC.

J. S. C. FRASER, Manager. Mining Map of Kootenay Districts.

Compiled by William Thompson, M. I. C. E. Size 6 feet by 5 feet. Latest, complete, and most authentic. Price \$8.00. Mining and Geographical Institute, 272, Milkwood Road, Herne Hill, LONDON, ENG.

THE ROYAL GOLD MINING CO.

OFFICERS: President, J. G. McMillan; Vice-Pres., A. Polson; Secretary, D. D. Birks; Treasurer, J. L. Whitney.

Capitalization 3,000,000 Shares. Par Value \$1 Each.

Fully Paid and Non-Assessable. 825,000 Treasury Stock to be used for Development Purposes only.

Property. THREE GROUPS Comprising SIXTEEN FULL CLAIMS

On the Colville Reservation between Rossland and Northport, Wash.

Assays from the surface of a 20-foot ledge on the Empire Group on Grouse Mountain, gave \$.65 in free milling gold; and surface assays from the Royal Gold group on Cronger Mt. gave a total value in gold, silver and lead of \$59.50.

Advantages Offered to Investors.

- 1. Three groups of claims at sufficient distance from each other to give three distinct chances for paying mines. 2. Splendid surface showings on all of the groups. 3. None of the properties more than three and a half miles from a railroad, and one group is only about 2,000 feet. 4. Abundance of timber for all mining operations. 5. One property only a short distance from Northport, the proposed smelter site. 6. No duty on ores sent to any of the big American smelters. 7. Winter quarters are now completed, supplies in, and everything ready for rapid development which is now being prosecuted. Day and night shifts are pushing the work as fast as it can possibly be done. 8. Negotiations are pending for the introduction of machinery and cheapest methods of ore reduction.

Only a small block of stock will be sold at the present price

5 CENTS A SHARE

As the condition of the property may justify a considerable advance at an early date. No certificate for less than 200 shares will be issued. For stock or further information apply to

D. D. BIRKS, OR McMILLAN & WHITNEY, Box 447, Rossland. Agents, Rossland.

For information concerning the MINES Of British Columbia Write to HENRY CROFT, Assoc. M. Inst. C. E., M. I. M. E. ROSSLAND, B. C. 14 years experience in British Columbia. Mining properties developed. Mining companies incorporated. Mining properties managed for owners.

Evaporated Cream Reindeer Brand. Unsuspected for Hotels, Home Use or Mining Camps. ROSSLAND The Bull's Eye of America. Real Estate is Active. Intending purchasers must act quickly to secure the advance. Apply at once to J. E. MILLS, Broker, Columbia Ave., Rossland, B. C.

Canadian Pacific Nav. Co. (LIMITED.) Time Table No. 28, taking effect March 1st, 1896. VANCOUVER ROUTE. Victoria to Vancouver—Daily, except Monday at 2 o'clock. Vancouver to Victoria—Daily, except Monday at 12:15 o'clock, or on arrival of C.P.R. No. 1 train. NEW WESTMINSTER ROUTE. From Victoria for New Westminster and way landings—Sunday at 23 o'clock; Wednesday and Friday at 7 o'clock. From New Westminster to Victoria and way landings—Monday at 12:15 o'clock; Thursday and Saturday at 7 o'clock. NORTHERN ROUTE. Steamships of this Company will leave for Fort Simpson and intermediate ports via Vancouver, the 1st and 15th of each month at 8 o'clock. When sufficient inducements offer, will extend trips to West Coast points and Queen Charlotte Islands. BARCLAY SOUND ROUTE. Steamer Maude leaves Victoria for Alberni and Sound ports the 10th, 20th and 30th of each month. The Company reserves the right of changing this Time Table at any time without notification. JOHN IRVING, Manager. G. A. CARLETON, General Agent. Victoria, July 24.

Wilson-Drumheller Packing Co., Spokane, Wash. PACKERS OF THE "CHINOOK" BRAND OF Hams, Bacon, Pure Leaf Lard, Etc. Mail orders have our prompt attention.

BELMONT HOTEL McDonald & Murchison, Props. RESERVE ST., ROSSLAND. MINING SEALS, RUBBER STAMPS, ETC. Phoenix Stamp Works, With THE FAIR, Spokane, Wash.

LEARNT IN D. B. Bogle's Im Laurier and THE CROW'S Mr. D. B. Bogle from an extended Canada. Interview of THE MINER said: "I considered undertaken by my the capital was a say 'undertaken' a ever matters have the delegation did anyone except the people who subser the expenses, nor as citizens of R towns keenly inter ment of the minin "We arrived i when the rapid d in British Colum test excited exco phemen who could not affor they were prepar own benefit and The net result is frequently affirm private since, th 'M' is written in prospectus for th people and capital "The discussio "There are thr which the road m ated: (1) Govern operation. (2) G of the road, w to all roads. (3) control. The alie pendent company It is in favor of of the baser sort, the creation of a e ing opportunities similar to those a during the constr "The third plan one at present in attitude. It will b but it is possibly in exigencies of the we may look forw honest attempt to of the mining indu is likely as shown more or less futile. "If Mr. Laurier factually solve this accomplished a fe whose results will reaching. Labor and "There is a ve Canada over the a tariff legislation I In this feeling a tinctly noticeable Canada has awak she is a nation and tatory measures will be adopted w forcing the suspes against Canada. be successful, but tries are going to WANT ENGL Russia Is Defia Is In The Powers Bet Talks of Ab Kruger's E (Copyrighted 1897 LONDON, Feb. 2 the Cretan game According to the Marquis of S a settlement of S formally indorsed is believed there approved, or the not have made the on the subject, wh of lords on Thurs telegraphic instruassadors of Grea of the great po government's poli This announcec lowed by the issu from St. Peterbu ble irritation in ently. It began through her mi called upon Gree troops and her f three days, and long statement of Russia. Russia Thra It was observem that neither Italy was ment warned that shou conception of he herself to be e friends to persis under the false i not united, beca another has not proposals. Russ reprisals, the first of the Pireus. Finally, accord

LEARNT IN THE EAST

D. B. Bogle's Impressions of Premier Laurier and His Policy.

THE CROW'S NEST ROAD

The Dominion Government Will Make an Honest Attempt to Conserve the Interests of the Mining Industry—Retaliatory Labor Legislation Sure.

Mr. D. B. Bogle returned on Friday from an extended trip to the east of Canada. Interviewed by a representative of THE MINER yesterday Mr. Bogle said: "I consider that the mission undertaken by myself and associates to the capital was a complete success. I say 'undertaken' advisedly, because however matters have been misrepresented the delegation did not claim to represent anyone except themselves and a few people who subscribed a small portion of the expenses, nor to be entitled to any consideration except from their position as citizens of Rossland or of eastern towns keenly interested in the development of the mining industry."

"We arrived in Ottawa at a time when the rapid development of mining in British Columbia and the keen interest excited in the east had become a phenomenon which the government could not afford to ignore and which were prepared to utilize for their own benefit and that of the country. The net result is, as Mr. Laurier has privately affirmed both in public and private since that mining with a bi-M' is written large in Canada's official prospectus for the attraction both of people and capital."

The Crow's Nest Railway.
"The discussion which the delegation had with Messrs. Laurier, Sifton and Tarte on the Crow's Nest Pass railway, if it did no good, certainly did no harm. Mr. Laurier has the diplomacy of an ambassador, the suavity of a courtier and the lofty ideas of a great statesman. He is in a position where all those qualities must be severely tried."

"The Crow's Nest Pass railway is not the least perplexing question in sight. It is now certain that the road will be built. The logic of the situation is irresistible. The alternative is the complete and final establishment of the mining business and the smelting industry in centres of the United States. The government recognize the alternative fully and will not accept it for a moment."

Three Plans to Choose From.
"There are three different plans on which the road may be built and operated: (1) Government ownership and operation. (2) Government ownership of the roadbed, with running privileges to all roads. (3) O. P. R. ownership and control. The alternative of an independent company is out of the question. It is in favor with some liberal politicians of the baser sort, because they look on the creation of a company to receive the pass from a liberal government as offering opportunities not so great, but similar to those afforded to politicians during the construction of the C. P. R."

"The third plan looks like the winning one at present in spite of Mr. Blair's attitude. It will be a very bad bargain, but is possibly inevitable through the exigencies of the government. I think we may look forward at the worst to an honest attempt to conserve the interests of the mining industry, which, however, is likely as shown by experience to be more or less futile."

"If Mr. Laurier's ingenuity can satisfactorily solve this problem he will have accomplished a feat of statesmanship whose results will be as beneficial as far reaching."

Labor and Tariff Laws.
"There is a very strong feeling in Canada over the approaching labor and tariff legislation in the United States. In this feeling a new element is distinctly noticeable, namely, contempt. Canada has awakened to the fact that she is a nation and can stand alone. Retaliatory measures are a certainty. They will be adopted with the intention of forcing the suspension of the labor law as against Canadians, and will probably be successful, but meantime both countries are going to be hurt."

WANT ENGLAND LEFT OUT

Russia Is Defiant and King George Is in a Funk.

The Powers Being Against Him He Talks of Abdicate—President Kruger's High Court Law.

(Copyrighted 1897 by the Associated Press.)
LONDON, Feb. 27.—The next move in the Cretan game is anxiously awaited. According to the news from the continent the Marquis of Salisbury's proposal for a settlement of the difficulties is not yet formally indorsed by the powers, but it is believed there is no doubt it will be approved, or the British premier would not have made the public announcement on the subject, which he did, in the house of lords on Thursday last, by reading the telegraphic instructions sent to the ambassadors of Great Britain at the courts of the great powers and outlining the government's policy toward Crete.

This announcement was promptly followed by the issue of a semi-official note from St. Petersburg, displaying considerable irritation in some quarters apparently. It began by saying that Russia, through her minister at Athens, had called upon Greece to withdraw all her troops and her fleet from Crete within three days, and was accompanied by a long statement of the motives actuating Russia.

Russia Threatens a Blockade.
It was observed throughout the statement that neither Great Britain nor Italy was mentioned, but Greece was warned that should she "in blind misconception of her own interests allow herself to be excited by self-seeking friends to persist in her present attitude, under the false idea that the powers are not united, because at the outset one or another has not concurred in Russia's proposals. Russia is resolved to take reprisals, the first step being a blockade of the Piræus."

Finally, according to this semi official

statement from St. Petersburg, the powers consider the annexation of Crete by Greece as being out of the question, adding: "And in the consciousness of their absolute support Russia will be in the position to prevent the Cretan question from imperiling the peace of Europe, even should any individual power refuse to accede to the proposed measures."

This apparently defiant announcement from the Russian capital created a sensation, but the statements therein contained are not confirmed from others, so it is asserted that the statement embodied Russia's views and not what has actually occurred. Active communications are still proceeding between the different European cabinets. The Marquis of Salisbury presided today at a special meeting of the cabinet at the foreign office.

King George to Abdicate.
Whether the solution of the imbroglio is peaceful or not depends entirely upon Greece and the dispatches from Athens indicate that the feeling of resistance to the powers is still running strongly among all classes throughout Greece, and that a declaration of war with Turkey would be received with enthusiasm. It is reported today that the king, recognizing that he cannot possibly long resist the will of Europe, and feeling it impossible to appease the people himself, will abdicate in favor of the crown prince, Prince Constantine, the Duke of Prussia, sister of Emperor William of Germany.

The latest Greek proposal is said to be that Greece should administer Crete and Austrian ministers Bosnia, but it seems to be agreed on all sides that peace can only be maintained by leaving Crete a part of the Turkish empire. The Marquis of Salisbury's proposals have been received with favor, not only by the British, but by most of the continental newspapers.

All the Powers Arming.
However, in the meanwhile military preparations are proceeding apace in Turkey and Greece, while everything is prepared in south Russia for the transport of a big Russian army to the Balkans whenever this step is deemed necessary. Telegrams from Vienna also declare that Emperor Francis Joseph has had repeated conferences with the Austrian minister of war and the plans for the mobilization of the Austrian forces on the Balkan frontier have been drawn up and horses are already being purchased for military uses. According to advice from the small Balkan states war preparations are proceeding there secretly and, in short, all the parties concerned are quite prepared for an explosion at any moment.

Calling Oom Paul's Bluff.
The action of the Volksraad, as cabled from Johannesburg yesterday, in adopting a new high court law by which any judgment of the high court can be annulled by the Volksraad, rendering all contracts and concessions unsafe, has caused a great stir here. The British newspapers loudly denounce the law as intended to enable President Kruger to put the screws on the Rand in the event of the refusal of the British government to pay the indemnity demanded by the Transvaal for the Jameson raid. The papers point out as significant, in view of a belief that the road law violates the London convention, that a battalion of the Suffolk regiment, numbering 700 men, has been ordered to leave England for the cape immediately.

Russia Rules in Corea.
Much attention has been attracted by the Russo-Japan treaty, published in the official messenger this week. It gives both Russia and Japan the right to station a large force in Corea to protect their settlements. The two parties agreed to lend joint financial aid to Corea in case of necessity, and Russia reserved the right to construct a telegraph line from Seoul to the frontier. It

is added that Corea retains full liberty in home and foreign affairs. Both Russia and Japan support the king, permanently, assuring order. The British newspapers comment on the treaty and declare that it virtually establishes the substitution of Russia in place of China as the dominant power at Seoul.

Lord George Hamilton, the secretary of state for India, informs the Associated Press that the government is surely mastering the bubonic plague in India. He adds that the cordon of the infected districts is now working effectually, and it is hoped that the disease will shortly be radically checked.

SIR CHARLES CONSENTS.
Hugh John Macdonald Will Lead the Conservatives of Manitoba.

OTTAWA, Ont., Feb. 27.—Sir Charles Tupper's return from England, the question of the leadership of the local opposition in Manitoba has been forced upon his attention by many influential conservatives in the province. Among the opponents of the Greenway government the opinion is unanimous that under the leadership of one so popular and able as Hugh John Macdonald, it would have no great difficulty, at the first opportunity that presents itself, in redeeming the province from the control of the Greenway faction of the liberal party. Recently this fact was urged upon the son of the late chief, when he was asked to accept the post of honor and responsibility as leader of the opposition in the legislature.

The reply of Mr. Macdonald showed that he appreciated the confidence reposed in him, but indicated that in the absence of the approval of his leader, Sir Charles Tupper, he did not think he ought to accept. Sir Charles had fought the party battle in the legislature, with a reverse. Hugh John did not like the idea of seeming to abandon his leader. The conservatives of Manitoba thereupon appealed to Sir Charles to release Mr. Macdonald from his obligation and permit him to do as he pleased with a reserve of countrymen in the west were calling him.

In reply the conservative leader stated that he would do as he pleased, but in the event of a request of the Manitoba conservatives and express his willingness to surrender any claims he might have on the assistance of Mr. Macdonald in parliament.

GOSPEL OF THE CAPITAL.
Sifton Still Said to Be Scheming for a Job for Smead.

OTTAWA, Ont., Feb. 27.—It is an open secret that the Hon. Mr. Sifton came to Ottawa with his little axe sharpened expressly for the purposes of decaution. The operation was to have commenced in the interior department and the liberal press out west announced plainly enough that the victim was to be the deputy minister whose place was wanted for Mr. J. A. Smart. Mr. Sifton's plans were frustrated at the last moment by the intervention of the minister of the interior the whip hand. The Manitoba school question is just now in such a ticklish situation that it accentuates Mr. Sifton's federal prominence.

The Citizen this morning reviews the report published in the Tribune some time ago that Smart is to be made deputy minister of the Indian and interior departments in place of Burgess and Reid. So far nothing official has been done in the matter. Mr. Sifton, however, has a plan of reorganization for the whole department, which will be made public very soon. The American Bank Note company of New York will apply at the next session for an act permitting it to do lithographing, printing and engraving business in Canada.

INCREASE IN EXPORTS.
For Seven Months It Amounts to Over \$6,000,000.

OTTAWA, Ont., Feb. 27.—Today's official Gazette contains the trade figures for seven months of the fiscal year ending January 31. The imports are \$65,568,611, as compared with \$66,844,765, or a decrease for the present year of \$1,276,154. The duty collected for seven months was \$11,131,108, as compared with \$11,045,773 in 1896, or a decrease of \$85,335 in the revenue.

There was a big increase in the exports, it being over \$6,000,000. For the seven months ending January 31, 1897, the figures are \$66,869,369, compared with \$60,445,478 for the same time in the previous year. There was an increase in the aggregate trade of the Dominion during the past seven months of \$4,882,414.

JOHN SHERMAN'S IDEA.
He Would Send Battleships to Cuba to Protect Americans.

Des Moines, Ia., Feb. 27.—Maj. Hoyt Sherman, brother of Senator Sherman, who has just returned from a visit to the latter, says the incoming secretary of state favors immediate action to protect American citizens in Cuba, and criticizes the present administration for not doing so. He favors sending battleships to Cuba instantly, and thinks it would not provoke a war with Spain.

Kootenay = London Mining Co., Ltd.

Incorporated Under the Laws of British Columbia.

CAPITAL STOCK 1,000,000 SHARES

Par Value \$1.00 Fully Paid and Non-Assessable.
Treasury 350,000 Shares.

OFFICERS AND DIRECTORS. Wm. Bennison, President; W. A. Campbell, Vice-President; M. O. Tibbits, Sec.-Treas.; J. W. Cover, Managing Director; C. O. Lalonde, A. J. McMillan, J. W. Boyd, Hiram Kitley, and J. S. Patterson.
Edward Pritchard, F. G. S., Consulting Engineer.
Head Office, Rossland, B. C.

Description of the Property.

The company owns the Annie Fraction and the Comet No. 2 mineral claims. The Annie Fraction is situated between the California, San Francisco and Black Bear, the latter of which is the property of the great Le Roi Mining & Smelting company and is the first western extension of the Le Roi mine. The vein of the Le Roi can be traced through the Annie Fraction and men at work on this property have tapped an ore chute at a depth of 40 feet from which assays gave returns of from \$14 to \$20.

The Comet No. 2 is a full claim, 1500 feet square, and lies about three miles north of Rossland. It has two strong well-defined ledges running through it. A prospecting shaft now down 70 feet shows nothing but vein matter the whole mass being well diffused with copper and iron pyrites. Assays averaging \$6 to \$8 have been obtained from this showing.

Shares.

The entire capital stock of the company excepting treasury shares has been pooled. The company now offers 50,000 shares of treasury stock at the low price of

Twelve and One-Half Cents a Share.

The proceeds will be used in purchasing machinery for the Annie Fraction.

For shares, prospectus or other information apply to
M. O. TIBBITTS, Secretary-Treasurer.
Or **J. W. COVER, Managing Director**

The Ottawa Gold Mining Co.
Limited Liability.
Capital Stock \$250,000.
Par Value, \$1.00 Each.
Rossland, B. C., January 28, 1897.

GEORGE A. POUNDER,
President and Gen. Manager
GEORGE E. TOMS,
Vice-President.
JOHN A. POUNDER,
Secretary and Treasurer.
JOHN A. POUNDER,
Superintendent.

TO THE PUBLIC:
The Directors of the Ottawa Gold Mining Company (Limited) wish to draw your attention to the following facts:
The capitalization of this Company is, perhaps, the smallest met with in the history of the Rossland mines, being only 250,000 shares of \$1.00 each. The Treasury Stock is \$50,000, and it should be known to possible investors that before one share of this stock has been sold the sum of \$2,000 had been spent upon the property.
The Directors have decided to limit the first and present issue of Treasury Stock to 20,000, and this number will be sold at the low price of 25 cents. When they have been sold, it is further decided to raise the price for the balance of the treasury stock to 50 cents. The Directors undertake that no further Treasury Stock will be placed upon the market until the proceeds of the first issue has been expended, or practically so.
The Ottawa is not a mere prospect. With the excellent showing resulting from the \$2,000 already spent upon the property, the Ottawa may be said to have passed the period of uncertainty, and work is being actively pushed night and day by five men. The tunnel is now in 75 feet.
The management of the Company is under the able and careful direction of the Ponder Bros., who may be depended upon to exercise judicious economy in protecting the rights and expenditures of the Company.
Remember the small capitalization, and also remember that 5 per cent. dividends upon \$1,000,000 means a 20 per cent. dividend upon a small capitalization of \$250,000.
Finally, the Ottawa, from its partial development, excellent location and experienced management, promises to exceed the greatest expectations of its Directors.
Order stock from
GEORGE A. POUNDER, President,
ROSSLAND, B. C.

Buy Stock in
The Ibox Mining Co.
Claim adjoins the Silver Bell group. Active mining operations now in progress. A tunnel to tap the same mammoth ledge which crosses the property of the Ottawa Gold Mining company—the largest ledge in the south belt—is now in 50 feet.

The First Block of Treasury Stock is now Offered at 6 Cents.

Address:
The Ibox Mining Company,
Shaw Hotel. Rossland.

SMOKELESS POWDER RIFLE CARTRIDGES.
WE CARRY A FULL LINE OF
WINCHESTER AND MARLIN RIFLES,
And a Well Selected Line of Fine Ammunition.
We Cater to the Sportsmen, and Guarantee Satisfaction. We have a good line of all Sporting Goods.
Ware Bros. Gun Store, Spokane, Wash.

The Weekly Rossland Miner.
Sixteen Pages, 96 columns. The largest weekly paper in the province and the largest mining paper in Canada. Issued on Thursday.
Subscription \$2.00 per year.

D
Each.
AIMS
ash.
ountain,
Crouger
g American
supplies in,
which is now
are pushing
roduction of
action.
ce at an
EY,
ossland.
Nav. Co.
March 1st, 1896.
TE.
ept Monday at
C. P. R. No. 1
ROUTE.
aster and way
ck, Wednesday
leave for Port
via Vancouver
at 8 o'clock.
s offer, will ex-
ints and Queen
ROUTE.
for Alberni and
and both of each
ght of changing
out notification.
VING, Manager.
ent.
er
Spokane,
Wash.
THE
OK"
F
af Lard, Etc
mpt attention
OTEL
son, Props.
ROSSLAND.
LS,
AMPS, ETC
Woks,
Spokane, Wash

Member of the ment on

PROSPECTS

He Considers t Road a Certa to Boundary L trol of Unapp

VICTORIA, Feb. two editorials in the prospective in of people into the spring and sum attention here.

ment, who ob name, said today

"I have read the and I am fully pr statements there immigration. N with all these pe them permanent yet I fear we s employment for

"The governm We are now havi pared on our agr this will soon b distribution. Th of people how t Railroad Y

"We have alre to encourage rail now looks as thou extend the Colum to Pentstion and build into the Bo

"The Orow's N tainty. I am ex ment any day th ertment has com ment for this. T have to wait for ment. There will in-council passed very soon; in fac will permit.

"I think the s mitted to build t probably be built lumbia Southern alone in the pro ment build it. E his colleagues b build a competing after having put that road. All C preserving the c but of course the new line under Coal and coke m Columbia river s this must be a lo

"So you see the enormous amou in the province mand for labor in with mining deve employment to think, however, t ment should keep tion and do every vide employment

Barnard J with amendm incorporation bill day authorizing Grand Forks to use any unappro the water works says this amendm ignore his plant a This he thinks is ter had been gran

W. S. Norman, to the province, the amendment was had no objection. made Monday ment voted down says the effort c there may be a chen has given s strike out the rig borrow \$20,000.

Left Colonel Scott a so well convinced trouble for the home last night. Before leaving the Drant to a sum they wished to s prescribed for the bill.

Hume had a te people this affe great pleasure at

JERSEY V Long Litigation Ended—A F From Vanco came the news that the Jersey case in the sup Anconada and G claims are amon camp, a long ane ing occurred o Two trials were before County Rossland.

It appears the Justice Drake h Mountain and A as bad location well, upon the did not apply an commissionerpe ground under th

J. M. Harris Henry, of Ross the Jersey claim \$1,000 expended M. McLeod, of conda, Messrs. Vancouver, an

Full particula judgment, who prove interesti first time many litigation will for the Jersey of Vancouver, Rossland; for E. M. McLeod, of conda, Messrs. Vancouver, an

Full particula judgment, who prove interesti first time many litigation will for the Jersey of Vancouver, Rossland; for E. M. McLeod, of conda, Messrs. Vancouver, an

Full particula judgment, who prove interesti first time many litigation will for the Jersey of Vancouver, Rossland; for E. M. McLeod, of conda, Messrs. Vancouver, an

Full particula judgment, who prove interesti first time many litigation will for the Jersey of Vancouver, Rossland; for E. M. McLeod, of conda, Messrs. Vancouver, an

Full particula judgment, who prove interesti first time many litigation will for the Jersey of Vancouver, Rossland; for E. M. McLeod, of conda, Messrs. Vancouver, an

Full particula judgment, who prove interesti first time many litigation will for the Jersey of Vancouver, Rossland; for E. M. McLeod, of conda, Messrs. Vancouver, an

Full particula judgment, who prove interesti first time many litigation will for the Jersey of Vancouver, Rossland; for E. M. McLeod, of conda, Messrs. Vancouver, an

Full particula judgment, who prove interesti first time many litigation will for the Jersey of Vancouver, Rossland; for E. M. McLeod, of conda, Messrs. Vancouver, an

Full particula judgment, who prove interesti first time many litigation will for the Jersey of Vancouver, Rossland; for E. M. McLeod, of conda, Messrs. Vancouver, an

Full particula judgment, who prove interesti first time many litigation will for the Jersey of Vancouver, Rossland; for E. M. McLeod, of conda, Messrs. Vancouver, an

Full particula judgment, who prove interesti first time many litigation will for the Jersey of Vancouver, Rossland; for E. M. McLeod, of conda, Messrs. Vancouver, an

Full particula judgment, who prove interesti first time many litigation will for the Jersey of Vancouver, Rossland; for E. M. McLeod, of conda, Messrs. Vancouver, an

Full particula judgment, who prove interesti first time many litigation will for the Jersey of Vancouver, Rossland; for E. M. McLeod, of conda, Messrs. Vancouver, an

Full particula judgment, who prove interesti first time many litigation will for the Jersey of Vancouver, Rossland; for E. M. McLeod, of conda, Messrs. Vancouver, an

Full particula judgment, who prove interesti first time many litigation will for the Jersey of Vancouver, Rossland; for E. M. McLeod, of conda, Messrs. Vancouver, an

Full particula judgment, who prove interesti first time many litigation will for the Jersey of Vancouver, Rossland; for E. M. McLeod, of conda, Messrs. Vancouver, an

Full particula judgment, who prove interesti first time many litigation will for the Jersey of Vancouver, Rossland; for E. M. McLeod, of conda, Messrs. Vancouver, an

Full particula judgment, who prove interesti first time many litigation will for the Jersey of Vancouver, Rossland; for E. M. McLeod, of conda, Messrs. Vancouver, an

WILL PASS MONDAY

Incorporation Bill Has Got Through the Committee Stage.

HIGGINS TO THE RESCUE

Grand Forks Likely to Have Been Dropped But For His Speech—No Material Amendments Affecting Rossland—Kellie Kicks.

VICTORIA, Feb. 25.—[Special.]—The incorporation bill successfully passed its second reading, and was reported by the committee of the whole to the house late this afternoon. It will come up on the report for final passage next Monday. There was no serious obstacle thrown in its way today so far as Rossland was concerned, but it looked very doubtful for Grand Forks for a time.

Stoddart said he had been informed that a large part of the people of Grand Forks were opposed to incorporation and that such representations had been made to him by a Mr. Hay and others of that place. The attorney-general said the government had received a numerous petition from Grand Forks in favor of incorporation. Many questions were asked as to the population and general prospects of the place and nobody seemed to be able to champion her cause, when Speaker Higgins took the floor and made an effective speech, saying he had recently been there and could therefore speak from personal observation. This carried the day for Grand Forks.

City Limits Defined. The only change in the original bill as to Grand Forks was leaving out lot 380 and thus cutting down the corporate limits to 737 acres. The corporate limits of Nelson were fixed at 372 acres. An effort was made to bring in the Horner addition, consisting of 160 acres, but it failed by one vote. The corporate limits of Rossland were fixed at 1,920 acres, but no mining claim can be taxed unless it is platted and offered for sale in the form of town lots.

Municipal Control of Water. The only important amendment made to the bill as a whole was to the effect that the places incorporated shall have power to appropriate and use any appropriated water in the vicinity. Nelson as well as Rossland is given power to borrow \$50,000 for immediate use and Grand Forks \$20,000. The attorney general showed much tact in the management of the bill in committee. Colonel Scott and Mr. MacNeill of Rossland, as well as John Houston and W. A. Jowett of Nelson, were much pleased, and there is general congratulation all around this evening.

Elections in a Month. As soon as the bill passes on Monday the government will appoint somebody to register votes in Rossland, as well as in the other two places, and the election for mayor and aldermen will be held within a month. Nine aldermen will be elected.

Fears a Water Famine. W. S. Norman, manager of the Rossland Water & Light company, arrived here today. He says he fears a great scarcity of water at Rossland this summer unless immediate steps are taken to secure the head waters of Rock, Murphy and Sheep creeks. He thinks water from Stony creek will be utterly inadequate for the population which will soon be at Rossland.

Kellie is Independent. The house adjourned till Monday to enable the private bills committee to catch up with its work. This committee will now grapple with the water power bills introduced and it may be expected that decisive measures will soon be adopted. In speaking yesterday Kellie took occasion to severely censure the government for not having brought down a bill regulating the water power question. He was especially rough on Col. Baker. I look for lively times over this water question. The government cannot count upon very positive or well defined support. It was supposed Kellie was a government man, but his speech yesterday indicates he is disgruntled about something.

Coast Railway Scheme Killed. It is reported that a telegram has been received from Ottawa saying that the railroad from the coast to Kootenay has been killed there. The government here is in no condition to give it sufficient aid. I think therefore it will not be heard of again.

LE ROI TRAMWAY.

Now Running Satisfactorily—Shipments From the Peyton Tunnel.

The Le Roi tramway is working beautifully, and there is no longer any work for the teams hitherto employed to carry down the ore from the mine for shipment. The tramway takes a load of 8,000 pounds every car, and a trip is made every 10 minutes. The company has enough cars now to carry 150 tons a day, but more were ordered last week.

The shipments of the Le Roi are at present restricted by the capacity of the hoisting apparatus, but they will be added to from now on by the output of the Peyton tunnel, described in THE MINER a few days ago. Captain Hall yesterday began the making of a road from the tunnel and the erection of the necessary platforms.

TARIFF ON LUMBER.

Charlton Gives His Views as to Probable Congressional Act.

OTTAWA, Ont., Feb. 25.—Your correspondent today interviewed Mr. Charlton as to what in his opinion was the prospect of the lumber duties in the tariff law about to be enacted by the incoming congress at Washington. Mr. Charlton, who has recently visited the American capital, frankly admitted that it is hopeless to expect a continuance of the free lumber provisions of the Wilson bill.

The depression in the lumber trade in all parts of the United States is leading to a more widely extended feeling in favor of lumber duties among the lumbermen in that country. This depres-

THE SUNSET DRIFT

It Is Now in 70 Feet With a Remarkable Showing.

VEIN IS A TRUE FISSURE

Plainly Marked for 70 Feet Down the Shaft Within Smooth Walls—The Ore From the Drift Remarkably Rich For Its Depth.

A visit to the Sunset claim on the east slope of Deer Park mountain, made Thursday, showed considerable development work done and in progress. The shaft is down 70 feet, and is in ore almost every foot from the surface. From the 60-foot level a drift has been run 70 feet on the vein, which is a true fissure having smooth, regular and well-defined walls. The course of the vein is southwest by northeast, with a slight dip to the north.

MINES OF TEXADA ISLAND

Van Anda and Raven Show Good Bodies of Shipping Ore.

Former Has a Small Vein of Copper Glance and the Latter a Big Ledge of Chalcopyrite.

VICTORIA, Feb. 22.—[Special Correspondence.]—Edward Blewitt, who is largely interested with John Mackay and others in the celebrated volcanic mine near Grand Forks, has returned here from a visit to his mines on Texada island, and from him I have gathered some interesting details of the discoveries recently made up there. Texada island is about 360 miles north of Victoria, and lies in the gulf of Georgia, between Vancouver island and the British Columbia mainland. It is about 35 miles long and seven or eight miles wide, very mountainous and well timbered. On the west side are some large deposits of iron ore owned by a California company. This iron carries some copper and peroxide of iron, too. All the ground in which the deposits are situated has been staked off in mineral claims, during the last few weeks, and there promises to be any amount of trouble over it.

Mr. Blewitt's mines are on the other side of the island—that is, on the east side. The Van Anda is the one most developed, and the best known. On this claim a shaft has been sunk 190 feet and some drillings have been made. Another claim called the Raven is supposed to be on the same ledge two or three miles away. A shaft has been put down continuously in ore of great width—the width at the bottom, when Mr. Blewitt left being nine feet.

Character of the Ores. The ore in the Van Anda is a beautiful copper glance, running about 60 per cent copper and 20 per cent iron. The vein varies in thickness from 18 inches to three feet and in some places carries a good deal of goauze. The ore looks very much like that found in the White Grouse mountain.

The ore in the Raven is chalcopyrite. It runs about 18 to 24 per cent copper and 8 to 10 per cent iron. The vein varies in thickness from 18 inches to three feet. Four hundred sacks have already been taken out simply in the sinking of the shaft and will be taken out by the elevator smelter. It being water transportation all the way from Texada island to Everett, the very low rate of \$1 per ton secured.

I have taken the trouble to obtain these facts about this new district so that readers of THE MINER might have some idea of the mineral resources of this coast country. I have not been to these mines myself, but I hope to visit them before returning to Kootenay. I have seen a good deal of the ore and many of the assays. The ore in the Raven is almost precisely like that in the Cliff and Commander at Rossland—very rich in copper with a moderate value in gold. Very little debris has been secured on this property, but the showing so far is remarkable. The walls are smooth and regular, with granite on one side and porphyry on the other. The vein, therefore, is on a contact and in a good position for permanency. The Van Anda has richer ore, but not so much of it. The chances are more favorable for the Raven because the ore is of a kind which is more reliable.

TEXADA WILL HAVE A BOOM.

The flattering prospects of these two properties have given a tremendous impetus to prospecting on Texada island. Twelve prospectors went up there today to work on the south end of the island. There is little snow in the mountains, and prospecting work can be carried on with slight difficulty during winter weather. The ledges run northeast and southwest, and the surface indications are very good. Gold was first discovered on the island in the days of the Cariboo excitement, and the evidence of placer work are now to be seen in many places, but it is not a placer country. The ore in the sulphide ore, the value of which was not understood by the pioneer miners of British Columbia.

DUNSMUIR MAY BUILD A SHELTER.

The Dunsmuir estate is interested with Mr. Blewitt in these Texada mines, and it is announced the Esquimalt and Nanaimo railroad, the property of the Dunsmuirs, is to be extended from Nanaimo, its present terminus, to the Union coal mines, where the coke ovens have been put in for making coke for the Kootenay smelters, and that if the developments of the Texada mines continue to be favorable a smelter will be built in that vicinity. It is but a short run from Union around to the Van Anda mine, and the ore can be brought over at a very small cost. Naturally Victoria is watching these developments with deep interest.

If you are interested in mining you cannot afford to be without THE ROSSLAND WEEKLY MINER. Post free to any address in the United States or Canada for \$2 a year in advance.

The BRUCE GOLD MINING CO., Ltd. Ly.

Incorporated Under the Laws of British Columbia.

Capitalization 1,000,000 Shares.

Treasury Fund 300,000 Shares. Par Value \$1.00.

Fully Paid and Non-Assessable.

OFFICERS.

A. S. GOODEVE, President. EDWARD TATHAM, Treasurer.

F. HAGEN, Vice-President. A. N. PATERSON, Secretary.

HEAD OFFICE, ROSSLAND, B. C.

\$800 worth of development work done and a splendid showing. Assays \$62.40, \$84 and \$186.66 a ton. Within one mile of smelter. Claim 43 1/2 acres; title by crown grant.

All treasury stock to be used for purposes of development only. By memorandum of association no work can be undertaken until the money therefor is in the hands of the treasurer.

A contract has been let to run 50 feet of tunnel.

First Issue of Treasury, 50,000 Shares at 10 Cents.

FOR SHARES APPLY TO

Paterson, Johnson & Co., Brokers, Rossland.

What Will Make Rossland a Great City

1. HER MINES.

The production of Rossland's mines more than doubled in 1896. At the present rate of increase the production will be more than quadrupled in 1897. With the introduction of cheap processes of treatment now assured Rossland will be able to produce at the end of the present year 1,200 tons of ore per day. The following mines are now shipping: Le Roi, War Eagle, Josie, Cliff, O. K., I. X. L., Jumbo, Mayflower, Kootenay, Nickel Plate, Red Mountain and Iron Mask.

In April the following mines will ship: Colonna, Monte Cristo, Sunset, Commander, Deer Park, Crown Point, Iron Colt, Homestake, and the giant of them all, a mine that is capable of making an output that would eclipse them all, the Centre Star.

2. HER PAY ROLL.

Fourteen hundred miners under ground. Fourteen hundred artisans and laborers are earning on an average \$5.00 per day.

A certain pay roll of \$3,000,000 per year.

3. HER RAILROADS.

Here today, the Columbia & Red Mountain connecting with Spokane Falls and Northern which connects at Spokane, Wash. with four transcontinental systems.

Columbia & Western railroad connecting at Trail with boats for all points on the Columbia river and with the Canadian Pacific at Revelstoke.

In June the Canadian Pacific railway will land freight in Rossland.

In course of construction are an opera house and hundreds of houses. Statistics show that in December three houses were erected daily.

Pure water and good light.

NO COMPETITOR IN SIGHT.

Montreal Townsite Syndicate

Offers a limited number of lots in the original townsite of Rossland for sale. Title absolutely perfect and guaranteed. For sale by all real estate agents in Rossland.

JOHN F. McCRAE, Agent for Syndicate.

Montezuma Gold Mining Company, Ltd. Ly.

Capitalization 1,000,000 Shares.

Par Value \$1.00 Each. Fully Paid and Non-Assessable.

Treasury Stock 300,000 Shares

OFFICERS.

R. C. MACDONALD, President. J. G. HOUGHTON, Vice-President. GEORGE E. TOMS, Secretary.

DIRECTORS. R. C. MACDONALD, J. G. HOUGHTON, J. W. BOYD, J. S. PATTERSON, N. J. JACKSON, and G. E. TOMS.

BANKERS: Bank of British North America.

Mines

Retaliation and the Golden West

On Deer Park Mountain On the North Fork of Salmon.

Why buy Montezuma Stock? Because: The Retaliation is bound to prove a mine. The stock is now at a very low figure. The money you pay for stock is spent on the mine. It is the best buy on the market.

Treasury Stock for Sale at Four and a Half Cents a Share.

George E. Toms, Secretary, Head Office, Stussi Blk, Rossland, B. C.

Remittances may be made to the Manager of Bank of British North America, here.

Thos. Davies & Co. Brokers and Financial Agents, Arbitrators, Etc.

Stocks, Bonds, Real Estate, and Insurance, and Mining Shares.

CANADIAN REPRESENTATIVE: R. T. Cuddy, City Trustee, W. S. Lee, Western Canada L. & S. Co. Toronto.

ENGLISH REPRESENTATIVE: Claude Bishop, Mgr. Consolidated Trusts Co.; J. W. Board, Esq., M. P. and others, London, Eng.

1 Toronto St., TORONTO.

L. C. Crawford, Mining and Real Estate Broker.

I make a specialty of handling properties in Waterloo Camp I have a number of choice groups and claims for sale on a stocking or bonding basis and on terms to suit any bona fide purchasers.

Branch Office: WATERLOO, B. C. Office: TRAIL, B. C.

OUTLOOK FOR WORK

Member of the Provincial Government on the Situation.

PROSPECTS FOR RAILWAYS

He Considers the Crow's Nest Pass Road a Certainty, and Two Roads to Boundary Likely—Municipal Control of Unappropriated Water.

VICTORIA, Feb. 26.—[Special.]—The two editorials in THE MINER concerning the prospective influx of a large number of people into the mining districts this spring and summer have attracted much attention here. A member of the government, who objected to the use of his name, said today:

"I have read the articles in THE MINER and I am fully prepared to believe the statements there made as to the heavy immigration. Now, what are we to do with all these people? We want to hold them permanently in the province and yet I fear we shall not be able to find employment for them all immediately."

"The government will do all it can. We are now having a special report prepared on our agricultural resources and this will soon be printed and ready for distribution. This ought to direct a lot of people how to find good homes."

Railroad Work in Prospect.
"We have already done what we could to encourage railroad construction. It now looks as though Mr. Heinze might extend the Columbia & Western railway to Pentiction and that Mr. Corbin might build into the Boundary country."

"The Crow's Nest road is a moral certainty. I am expecting the announcement any day that the Dominion government has concluded some arrangement for this. They will not necessarily have to wait for the meeting of parliament. There will probably be an order-in-council passed and work commenced very soon; in fact, as soon as weather will permit."

"I think the C. P. R. will be permitted to build the road, though it will probably be built under the British Columbia Southern charter. Mr. Blair is alone in the province that the government build it. He will have to yield to his colleagues. It would never do to build a competing line to the C. P. R. after having put so much money into that road. All Canada is interested in preserving the credit of the C. P. R., but of course the C. P. R. will build this new line under restrictions as to rates. Coal and coke must be delivered at the Columbia river at a certain price and this must be a low price."

"So you see there will probably be an enormous amount of railroad building in the province. This will create a demand for labor in every direction. This, with mining development, ought to give employment to many thousands. I think, however, the Dominion government should keep an eye on the situation and do everything possible to provide employment for the new population."

Barnard is Disgruntled.
E. S. Barnard is very much disgruntled with amendment made to the municipal incorporation bill in committee yesterday authorizing Rossland, Nelson and Grand Forks to appropriate for public use any unappropriated water. He has the water works plant at Nelson, and he says this amendment enables the city to ignore his plant and have one of its own. This he thinks is unfair after the charter had been granted him.

W. S. Norman, manager of the Rossland waterworks, was present when the amendment was adopted and said he had no objection to it. An effort is to be made Monday to have the amendment voted down, but Hume of Nelson says the effort cannot succeed, though there may be a hot fight over it. Kitchen has given notice of a motion to strike out the right of Grand Forks to borrow \$20,000.

Left for Home.
Colonel Scott and Mr. MacNeill were so well convinced of no further serious trouble for the bill that they left for home last night, going via Vancouver. Before leaving they gave a dinner at the Driad to a number of friends to whom they wished to show some mark of appreciation for the interest shown in the bill.

Hume had a telegram from the Nelson people this afternoon expressing their great pleasure at the passage of the bill. J. R. R.

JERSEY WON THE SUIT.

Long Litigation with the Anaconda Ended—A Promising Property.

From Vancouver Friday evening came the news by wire to W. E. Harris that the Jersey owners had won their case in the supreme court against the Anaconda and Green Mountain. These claims are among the best known in the camp, a long and tedious litigation having occurred on the adverse claims. Two trials were had some two years ago before County Court Judge Spinks, at Rossland.

It appears that by his judgment Mr. Justice Drake has ruled out the Green Mountain and Anaconda claims entirely, as bad locations, and that the locators did not apply and obtain from the gold commissioner permission to relocate their ground under the name of the Defender. J. M. Harris, of Sandon, and I. L. Henry, of Rossland, are the owners of the Jersey claim. There has been some \$1,000 expended on it, showing up some 20 feet of solid ore. A 50-foot tunnel has been run to tap this ore body, in the face of which is a flattering showing. One hundred and fifty feet more will bring the tunnel under this immense body, and ere it is reached with the tunnel the showing now in its face will no doubt be greatly improved.

Full particulars, and the text of the judgment, when they arrive, should prove interesting, as no doubt the first time many new points in mining for the Jersey were E. P. Davis, Q. C., of Vancouver, and John S. Clute, of Rossland; for the Green Mountain and Defender, E. P. Davis, Q. C., and F. M. McLeod, of Rossland; for the Anaconda, Messrs. Wilson & Campbell, of Vancouver, and R. A. Armstrong, of

Rossland. The settlement of this long and tedious litigation will be appreciated in Rossland, as the particular ground the keynote to many mining claims lying about two and one half miles north of Rossland, immediately off Red Mountain.

HAVE A GOOD SCHEME.

Sports Want to Advertise Rossland on Their Way to Nevada.

The full blooded sports of Rossland, who are chartering a special car for Carson, Nev., to see the Corbett-Fitzsimmons fight, are planning to have no end of a time, but they want to pretend now that it is not a trip of pleasure, but of business; and not of business for self-aggrandizement, but of a large and noble self sacrificing kind which eschews personal gain for public good. In other words these pilgrims are going in a palatial car with lashings of champagne, as missionaries to the people to whom has not yet been preached the gospel of Rossland.

The car is to be loaded with a fine collection of the ores of Rossland, and at every stopping place the capitalists are to be asked to walk up and inspect and invest. The sports are to be loaded with special editions of the newspapers and other printed matter relative to Rossland's mineral wealth, which they will distribute broadcast. These self-sacrificing pilgrims will also be loaded with mining stocks and town lots, which it is believed can also be unloaded on the unsuspecting public, or at least be used for poker chips as a last resort.

"It is the greatest advertising scheme that ever was known," said one of the promoters last night. "This fight will attract the largest crowd that has ever attended a prize fight, because it is sure to come off without interruption and the spectators are not liable to arrest as participants. It's a great thing, sure."

"When we start we shall send a telegram to Corbett and another to Fitzsimmons something in this form: Your Rossland friends are coming in a car lined with gold. Be sure to meet us at the depot. Then after the fight we shall ask the winner to come and visit the camp, and I tell you Rossland will get an immense advertisement out of it all over the county."

NEAR SLOCAN CROSSING

Three Fine Properties on Rover Creek Described.

Big Four and Leap Year Groups Show Sulphide Ores—Blend Is a High Grade Silver Proposition.

Frank Edwards returned a few days ago from Slocan Crossing, where he has been for several months working on the Big Four group on Rover creek. To a MINER representative he gave a lot of interesting information about the principal properties in that section. Talking of the Big Four group, which is under bond to an English syndicate, he said: "Work has been carried on continuously all winter with most encouraging results. On the No. 3 claim there is a very fine showing of sulphide ore, identical in appearance with the pyrrhotite ores of Red Mountain. The width of the ore body has not yet been ascertained, but it is enormous."

"A tunnel is now being run further down the mountain to cut this ore body at greater depth, and determine its extent and value. This tunnel is now in 60 feet, and is expected to reach the ore in about 20 feet more."

"On the No. 4 claim, which adjoins the No. 3 on the east, a 60-foot tunnel is the principal work done to date. This tunnel was started and continued for a considerable distance in ore that was 12 feet in width. Then a break occurred, but, after running 35 feet, a second ore chute, four feet wide, was found and is still being drilled on. On the No. 2 claim a tunnel 37 feet long and on No. 1 claim several open cuts were made, and ore found in each opening."

"Across Rover creek and half a mile east of the No. 1 is the Blend, owned by Malone of Nelson. Considerable ore has been shipped from this claim, and with a profit to the owner. This ore is high grade in silver, carrying some gold. Half a mile to the south is the Leap Year group. The ore of this group is also a sulphide ore, from which assays of great value have been obtained."

"The formation in which all these ore bodies lie is schist. In my opinion the time is not far distant when a great mining industry will be established there, and Slocan Crossing, which is now marked by a bridge across the Slocan river, may in a short time become a city of considerable importance."

\$1,000 REWARD.

Local Reward Withdrawn Because of Two From Victoria Offered.

Mr. Mitchell, of Challoner, Mitchell & Spring, whose jewelry store was broken into on Wednesday evening, has withdrawn his offer of \$500 reward for the apprehension of the burglars. He has done so on the receipt of a telegram from Chief Constable Husey at Victoria saying that the firm there had offered a reward of \$250 and that the provincial government had offered an additional reward of \$750.

These two handsome incentives will doubtless stimulate the detective abilities of the province and outside of it and with the best talents thus put on its mettle, the burglars will have to be exceedingly wary to escape arrest.

FROZEN TO DEATH.

Prospector Named Sherwood Found Dead on Rover Creek Trail.

NELSON, Feb. 26.—[Special.]—Next week the Bank of Montreal will open a branch in New Denver. Mr. F. T. Finucane, who has been for some years in the Nelson office, leaves on Saturday to take charge, and he will be assisted by Mr. Broomfield.

The body of a man named Sherwood has been found on the Rover Creek trail. Deceased, who was interested in claims higher up the creek, had been in town for a day or two and was returning to work. It is supposed that he was overcome with fatigue and fell asleep by the wayside, where he was frozen to death. The body was brought into town today.

The weather is bright and mild. The snow is disappearing rapidly and it looks as if an early spring were at hand.

Mr. John Hamilton, the C. P. R. station agent, has returned from a trip to his home in Eastern Canada. Visitors are already swarming in and all the hotels are full.

KILLS THEIR TRADE

Newspapers Will Not Be Allowed to Advertise Pugilists.

NO MORE PRIZE RING NEWS

Bill Introduced in Congress Practically Preventing the Publication of Any Bets or Pugilistic News of Any Kind—Seems Likely to Pass.

WASHINGTON, D. C., Feb. 26.—The preliminary newspaper reports of the coming Corbett-Fitzsimmons prize fight were brought to the attention of the house committee on interstate and foreign commerce today by Rev. Wilbur F. Crafts, with the result of speedy and radical action by that committee. Mr. Crafts is the secretary of the National Reform league, and has been instrumental in securing congressional action against prize fighting and against lotteries. He presented to the committee the draft of a bill to stop sensational reports of prize fighting, representing that most newspapers would be glad to omit the details of pugilistic events from their columns if they were not driven to publish them by the enterprise of less scrupulous rivals.

The committee made some immaterial changes in the bill and then, by a practically unanimous vote, instructed Representative Aldrich of Illinois to report it to the house.

The text of the bill is as follows: Section 1. That no picture or description of any prize fight or encounter of pugilists, under whatever name, or any proposal or record of betting on the same, shall be transmitted in the mails of the United States, or by interstate commerce, whether in a newspaper or other periodical, telegram or in any other form.

Sec. 2. That any person sending such matter for transmission by mail, or in the interstate commerce, shall be deemed guilty of a misdemeanor, and shall be punished by imprisonment for not more than five years, at the discretion of the court, or by a fine not exceeding \$1,000.

The speed with which the Oatman bill to prevent prize fighting in the territories was passed by congress, leads the friends of this new proposition to hope that it may be made a law by this congress with as little difficulty. Members of the committee, however, think the fulfillment of that hope very doubtful. The bill was reported to the house without delay, however.

A Claim

AND

An Offer

WE CLAIM there is only one preparation in Canada to-day that is guaranteed to cure BRONCHITIS, and that is DR. CHASE'S SYRUP OF LINSÉE AND TURPENTINE. It is MOTHER'S cure for her child when it is all stuffed up with CROUP and coughing its little lungs out with WHOOPING COUGH. One small dose immediately stops that cough. By loosening the phlegm, puts the little one to sleep and rest. Dr. Chase compounded this valuable syrup so as to take away the unpleasant taste of turpentine and linsée. WE OFFER to refund the price if Dr. Chase's Syrup will not do all that it is claimed to do. Sold on a guarantee at all dealers, or Edmanston, Bates & Co., 45 Lombard St. Price, 25c.

SOLD BY McLEAN & MORROW, DRUGGISTS.

PROFESSIONAL CARDS.

C. R. HAMILTON, Barrister, Solicitor, Etc. Columbia Ave., Rossland.

A. W. MORE & CO., Mining and Stock Brokers. Correspondence Solicited. Clough's Code Used. 70 Douglas St., VICTORIA, B. C.

J. B. FERGUSON & CO., Mining Properties. STOCKS AND REAL ESTATE. Next Door to Bank of B. N. A. ROSSLAND, B. C.

JOSEPH L. WARNER, Engineer of Mines. Expert Examinations and Reports. General Supervision of Mining Development Work. 503 Traders Block, SPOKANE, WASH.

J. L. PARKER, Consulting Mining Engineer. Mines Examined and Reported on. General Supervision of Mines Attended to. Office over Weeks Kennedy & Co., Columbia Ave. ROSSLAND, B. C.

W. M. NEWTON, Mines and Mining Stock Broker. Fire Insurance and Notary Public. Assisted by Mr. Edward Baillie, Expert Accountant. Office with F. W. Roll, ROSSLAND, B. C.

W. J. G. DICKSON, Mines, Mining & Real Estate Broker, General Produce Commission Agent. Bealey Block, NELSON, B. C.

Cromwell Mining and Development Co., Limited Liability.

Incorporated under the Laws of British Columbia.

CAPITAL STOCK 1,200,000 SHARES. Treasury Stock 500,000 Shares. Par Value \$1.00. Fully Paid and Non-Assessable.

Officers

Albert Stein, President; H. E. Cover, Vice-Pres. and Gen. Man.; J. A. Scaman, Secretary-Treasurer; W. H. Fife and W. J. Green, Trustees.

Description of Property.

The company owns the Trail Hunter and Cromwell mineral claims. The Trail Hunter is situated in the South Belt about 1 1/2 miles from Rossland and about 3/4 of a mile from the railroad on the Red Eagle. A strong iron-capped vein crosses the property and in the bottom of an 18-foot shaft there is a fine showing of ore. A wagon road has already been built to the property and development work will be pushed as rapidly as possible. Assays \$20 per ton. The Cromwell is a full claim located on the North Fork of the Salmon River and joins the Lizzie B. and Porto Rico, two claims which were recently sold for \$63,000 and \$45,000 respectively. Assays have been obtained from the surface of the Cromwell running as high as \$140 in gold per ton. It is the intention of the company to push development as rapidly as possible and has placed the unusually large sum of 500,000 shares in the treasury for that purpose.

The company is now offering the first block of stock at the low price of

Three and a Half Cents.

For shares, prospectus or other information apply to

J. A. SCAMAN, Sec. and Treas.

Or Wm. Bennison & Co., Sole Agents.

WE HAVE

Made arrangements to sell the lots in the townsite of Rossland recently purchased by the

MONTREAL SYNDICATE.

The title to these lots is perfect. We can recommend them to our clients, and do so unreservedly. They are a safe investment. Call early and get prices.

LOTS ON COLUMBIA AVENUE

Are scarce, but we can furnish one or two at reasonable prices and on easy terms.

PATERSON, JOHNSON & CO., REAL ESTATE, MINES, STOCKS, INSURANCE. Columbia Ave., opp. Miner block, Rossland.

Canadian Rand Drill Co.

JENCKES' MACHINE CO. Sherbrooke, - - - Quebec.

Mining • Machinery • of • Every • Description.

Air Compressors, Rock Drills, Hoisting Engines, Boilers, Mining Pumps, Concentrators, Stamp Mills, etc.

Estimates and Catalogues furnished on application to J. F. TRAEVERS, Warehouse in Rossland. F. B. MENDENHALL, General Agt. for B.C., Spokane, Wash.

Sullivan Diamond Prospecting Core Drill.

Diamond Drills of all Capacities from 200 to 5,000 feet Operated by Steam, Compressed Air, Electricity or Hand Power.

Test Your Properties Rapidly, Accurately and Cheaply. There is no duty on Diamond Drills.

SULLIVAN MACHINERY CO., MANUFACTURERS CHICAGO, ILL., Contractors for Diamond Drill Prospecting. Estimates on Diamond Drills or Contract Work Furnished on Application.

Knight & Stone, Northwestern Agts. Spokane and Rossland.

E. DRILL, CAPACITY 350 FEET. Operated by Electricity.

E. DRILL, CAPACITY 400 FEET. Operated by Steam or Compressed Air.

SOME FUN MONDAY

Rogers Has a Few Amendments to the Incorporation Act.

BARNARD'S LITTLE GAME

Mr Nelson Is to Have Waterworks of Her Own He Proposes to Make Her Buy His Plant-Heineze's Railway Bridge.

VICTORIA, Feb. 27.—[Special.]—Several amendments are to be offered to the incorporation act when it comes up for final consideration on Monday.

Barnard Is Behind Rogers. This amendment is supposed to hail from F. S. Barnard and is to be especially directed at Nelson.

They Like Heineze's Way. Chester Glass returned this morning. He is supposed to be here in the interest of a bridge which Heineze wants to build across the Columbia at Robson.

General Warren Takes Off His Hat to a Second Story About It. Most people will remember the story that went the rounds of the press a short time since, which was first published in the Post-Intelligencer of Seattle.

General Warren immediately took off his hat to the writer, which is the general's habitual courtesy to a kindred spirit who can soften the outlines of cold facts with a strong solution of imagination.

THE NEW OPERA HOUSE. Is All Booked In and Nearly Shingled Over. There are 20 men employed in the erection of Hart's opera house on Le Rotave.

THE GOLD BAR MINING COMPANY. The Gold Bar Mining company has just completed organization, and the first board of officers includes Z. J. Lemon, John F. Sheridan and Joseph Wright of Toronto.

THE EXCHEQUER MINING COMPANY. The Exchequer Mining company has been incorporated with a capital stock of \$1,500,000.

THE ROSSELLAND MINER. The only paper giving all the news of Rossland and the Trail Creek districts is THE ROSSELLAND MINER.

MINING NOTES.

The Macanerr claim, at the mouth of Wild Horse on the Salmon river, was sold yesterday by Samuel Trapp for \$5,000 to local parties, who will immediately start in to develop it.

The Celtic Queen company will resume work as soon as a superintendent can be secured to take Dennis Clark's place.

The Centre Star yesterday started a tunnel to make connection with the north drift. The tunnel runs in a north-easterly direction, and its length will be about 300 feet.

Work will be commenced Monday in the 40-foot shaft on the Violet and Maggie claims, owned by the Royal Victoria Gold Mining company.

Messrs. Challoner, Mitchell & Spring have offered a reward of \$500 for the recovery of the goods stolen from their store Wednesday evening.

It is estimated that there are now over a thousand men employed in building operations in the city, and there is a suggestion to put on double shifts on some of the buildings and work by the electric light.

Ground was broken Saturday on now supplying water or light to said cities, in accordance with the provisions of any act or act authorizing such purchase.

This amendment is supposed to hail from F. S. Barnard and is to be especially directed at Nelson.

They Like Heineze's Way. Chester Glass returned this morning.

General Warren Takes Off His Hat to a Second Story About It. Most people will remember the story that went the rounds of the press a short time since, which was first published in the Post-Intelligencer of Seattle.

General Warren immediately took off his hat to the writer, which is the general's habitual courtesy to a kindred spirit who can soften the outlines of cold facts with a strong solution of imagination.

THE GOLD BAR MINING COMPANY. The Gold Bar Mining company has just completed organization, and the first board of officers includes Z. J. Lemon, John F. Sheridan and Joseph Wright of Toronto.

THE EXCHEQUER MINING COMPANY. The Exchequer Mining company has been incorporated with a capital stock of \$1,500,000.

THE ROSSELLAND MINER. The only paper giving all the news of Rossland and the Trail Creek districts is THE ROSSELLAND MINER.

THE ROSSELLAND MINER. The only paper giving all the news of Rossland and the Trail Creek districts is THE ROSSELLAND MINER.

THE ROSSELLAND MINER. The only paper giving all the news of Rossland and the Trail Creek districts is THE ROSSELLAND MINER.

THE HEATHER BELL

Famous Sullivan Creek Property Looks Like a Bonanza.

THIRTY FEET OF SOLID ORE

One of the Finest Showings Ever Seen in the Trail Creek District at a Similar Depth - Queen Victoria Looks Well, Too.

Samuel Forteah, one of the original locators of the Heather Bell mine on Sullivan creek and who is still largely interested in the property now incorporated, made a trip to the mine yesterday to investigate the report of a big strike announced by THE MINER a few days ago.

There are now on the dump about 60 tons of this ore, taken out in doing the above described work, and when the tunnel gets into the ledge it will not take long to put the mine in shape to ship about a carload of ore a day if it should prove to have shipping values.

Queen Victoria Group. While on Sullivan creek Mr. Forteah visited the Queen Victoria group, consisting of the Beaver and Denmark. A tunnel has been run in 65 feet, opening a vein fully 50 feet wide.

FOUR LITTLE GREECE. She Will Be Asked to Evacuate Crete Immediately. VIENNA, Feb. 27.—The following semi-official announcement was made here this afternoon: The negotiations relative to the form of the note to be presented to Greece, demanding the evacuation of Crete, continue.

PARIS, Feb. 27.—The following semi-official statement was issued this evening: "All the powers have instructed their representatives at Constantinople and Athens to agree upon the terms of a note to be sent to the two governments, based upon Russia's and the Marquis of Salisbury's proposals."

PORTLAND TAKES SECOND PLACE THROUGH BRITISH COLUMBIA SCHEDULE. PORTLAND, Wash., Feb. 26.—[Special.]—From a reliable source it is learned that a change of country is in contemplation, in connection with the proposed new time-table now being arranged to go into effect over the Oregon Railway and Navigation line and connections about April 1.

ANOTHER DIVIDEND. The Le Roi Declares Its Eleventh Division of Profits. SPOKANE, Wash., Feb. 26.—[Special.]—The directors of the Le Roi Mining company last evening declared another dividend of five cents per share, amounting to \$25,000.

THE EXCHEQUER MINING COMPANY. The Exchequer Mining company has been incorporated with a capital stock of \$1,500,000.

THE ROSSELLAND MINER. The only paper giving all the news of Rossland and the Trail Creek districts is THE ROSSELLAND MINER.

THE ROSSELLAND MINER. The only paper giving all the news of Rossland and the Trail Creek districts is THE ROSSELLAND MINER.

Red Eagle Gold Mining Co., Limited Liability.

Capitalization 1,200,000 Shares. Treasury 500,000 Shares. Par Value \$1.00. Fully Paid and Non-Assessable. OFFICERS: W. H. Fife, President; Wm. Bennison, Vice President; Jno. W. Cover, Manager; T. G. Elgie, Secretary-Treasurer.

The Red Eagle Gold Mining Co.'s Properties CONSIST OF THE Red Eagle and Red Pole Mineral Claims, Composed of about 75 acres.

The Red Eagle. The Red Eagle mineral claim is situated on the east slope of Deer Park mountain, between the Mayflower and Curlew claims. There are three known ledges crossing this property.

The Red Pole. The Red Pole is situated one-half mile south of the Red Eagle and east of the Silver Bell mine. The Silver Bell ledge crosses the Red Pole mineral claim.

Treasury Shares. The company has secured the survey and are applying for the Crown grant, and will continue developing the property all winter, and fully expect to be able to find pay ore to cover the development almost from the surface.

Red Eagle Gold Mining Co., Ltd. Or, Wm. Bennison & Co., B. C.

THE WM. HAMILTON MFG. CO., LTD. Manufacturers of

Stamp Mills, Concentrators, Smelters, GENERAL MINING AND SAWMILL MACHINERY. Sole Agents for Bertram & Sons "Dundas" Iron Working Machinery.

Resident Agent: CON. HANSON. Temporary Address: "Miner Office." HEAD OFFICE AND WORKS: PETERBOROUGH, ONTARIO. BRANCH OFFICES: VANCOUVER AND ROSSLAND, B. C.

The R. J. Bealey Company (Limited Liability)

Mines, Stocks, Real Estate And Insurance. CONVEYANCING NOTARY PUBLIC AND GENERAL AGENTS.

Offices at Rossland, Trail and Nelson. JOHN A. MOODY, LONDON, ONT. Mining Stocks AND MINING BROKER.

LENZ & LEISER, Importers of Foreign and Domestic DRY GOODS, Gents' Furnishing Goods, etc. SPOKANE DRUG CO., SPOKANE WASH. Imported and domestic perfumes, rubber goods and druggists sundries.

WEILER BROS. Furniture Manufacturers and Importers.

Carpets, Curtains, Linoleums, Wall Paper, Crockery, Glassware, Cutlery, Lamps, Bar Goods, Complete House Furnishings. Victoria, B. C. Largest stock west of Toronto. Hotels furnished complete at short notice.

Pure Gold Mining Co., Ltd. Incorporated under the Laws of the British Columbia.

Capital Stock 1,000,000 Shares. 400,000 Shares set apart for development purposes. The company owns 3 full claims on CHRISTINA LAKE in the Trail Creek mining district.

THE ROSSELLAND MINER. DAILY AND WEEKLY. Give the Mining News of Kootenay Correctly and Completely.

Two Dollars RESULT OF Le Roi Ore Pro Conc A NEW ERA Full Details of the O. K. Cent of the trated Six In The results of the Le Roi ore at finally summed Dr. Willis E. Ev ing, and the repoi Roi company. C cannot give out t have been passed but he had no h MINER represent ing: "We have fact that these o in doing so we h era of prosperity The result of marized as follow Gross value of o per ton..... Gold and silver save Gross value of conc Total value of m Percentage of extr Ratio of concentr The general a of ore ore use per ton, as dete sample. An av which this ore v per ton, but whi ling the ore into had all large ma and thrown to o on quence that the showed better From these 10% saved on the p ounces of gold, rounds of concentr The concentrates gold, 2.92 ounce cent. in copper. \$5 in all values. The gold save made into a bri being tested to a and a value of \$ Captain Hall h graded as follow Smelting Comp plates of the 1897." This bri office of the coe together with the Captain Hall fionally on Stand other thing dr to the coincident other side of t "the people wer ing a new govern ment who had b prosperity, and been inaugurati for Rossland." The foregoing may be surpass although Capital tive to state th actually been m some minor de suitable for the capacity not be one thing. It is tion to state a t it is likely only in order to avo pers. Dr. Ever made. In discussi Everett said: should prove the ores will conce portion to the te I have every m about reason t will actually do merical value w ones bodies of l ores of this cam declare that the K. was excu Thomas Newma taking as deep terest in the tes Captain Han the work of ma ing the whole of had much to do experience with as 1848, in the lead mines at N in this country experience be as general gold and silve Mont., for 16 v he was twice m WAR EA Connection Ma Two The event of Eagle was the between the N through the No a very large bl down. The main sh below tunnel N started to drift on the vein. T of the shaft w break down as during the pas Between the addition many ready to bre however, will e per week for so Le Roi's The founda are all ready a for the new bo tain Hall says before the mo is working exc car can be load