

**CIHM  
Microfiche  
Series  
(Monographs)**

**ICMH  
Collection de  
microfiches  
(monographies)**



**Canadian Institute for Historical Microreproductions / Institut canadien de microreproductions historiques**

**© 1997**

Technical and Bibliographic Notes / Notes techniques et bibliographiques

The Institute has attempted to obtain the best original copy available for filming. Features of this copy which may be bibliographically unique, which may alter any of the images in the reproduction, or which may significantly change the usual method of filming, are checked below.

L'Institut a microfilmé le meilleur exemplaire qu'il lui a été possible de se procurer. Les détails de cet exemplaire qui sont peut-être uniques du point de vue bibliographique, qui peuvent modifier une image reproduite, ou qui peuvent exiger une modification dans la méthode normale de filmage sont indiqués ci-dessous.

- Coloured covers/  
Couverture de couleur
- Covers damaged/  
Couverture endommagée
- Covers restored and/or laminated/  
Couverture restaurée et/ou pelliculée
- Cover title missing/  
Le titre de couverture manque
- Coloured maps/  
Cartes géographiques en couleur
- Coloured ink (i.e. other than blue or black)/  
Encre de couleur (i.e. autre que bleue ou noire)
- Coloured plates and/or illustrations/  
Planches et/ou illustrations en couleur
- Bound with other material/  
Relié avec d'autres documents
- Tight binding may cause shadows or distortion  
along interior margin/  
La reliure serrée peut causer de l'ombre ou de la  
distorsion le long de la marge intérieure
- Blank leaves added during restoration may appear  
within the text. Whenever possible, these have  
been omitted from filming/  
Il se peut que certaines pages blanches ajoutées  
lors d'une restauration apparaissent dans le texte,  
mais, lorsque cela était possible, ces pages n'ont  
pas été filmées.

- Coloured pages/  
Pages de couleur
- Pages damaged/  
Pages endommagées
- Pages restored and/or laminated/  
Pages restaurées et/ou pelliculées
- Pages discoloured, stained or foxed/  
Pages décolorées, tachetées ou piquées
- Pages detached/  
Pages détachées
- Showthrough/  
Transparence
- Quality of print varies/  
Qualité inégale de l'impression
- Continuous pagination/  
Pagination continue
- Includes index(es)/  
Comprend un (des) index

Title on header taken from: /  
Le titre de l'en-tête provient:

- Title page of issue/  
Page de titre de la livraison
- Caption of issue/  
Titre de départ de la livraison
- Masthead/  
Générique (périodiques) de la livraison

- Additional comments: /  
Commentaires supplémentaires:

Parts of the covers are missing.  
Pagination is unnumbered.

This item is filmed at the reduction ratio checked below /  
Ce document est filmé au taux de réduction indiqué ci-dessous.

10X	14X	18X	22X	26X	30X
<input type="checkbox"/>	<input type="checkbox"/>	<input type="checkbox"/>	<input type="checkbox"/>	<input checked="" type="checkbox"/>	<input type="checkbox"/>
12X	16X	20X	24X	28X	32X

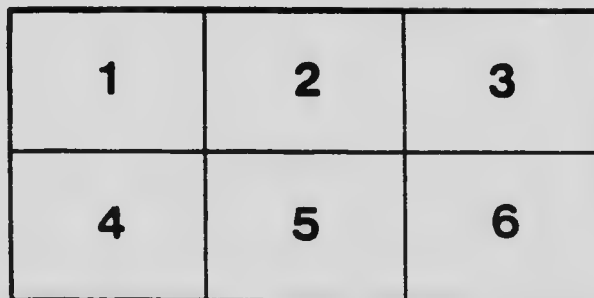
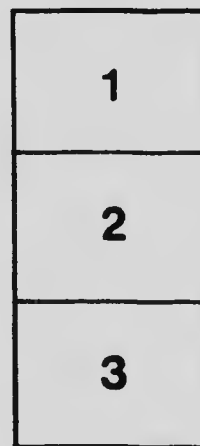
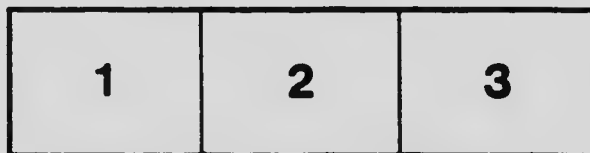
The copy filmed here has been reproduced thanks to the generosity of:  
Ontario Institute for Studies in Education,  
R.W.B. Jackson Library

The images appearing here are the best quality possible considering the condition and legibility of the original copy and in keeping with the filming contract specifications.

Original copies in printed paper covers are filmed beginning with the front cover and ending on the last page with a printed or illustrated impression, or the back cover when appropriate. All other original copies are filmed beginning on the first page with a printed or illustrated impression, and ending on the last page with a printed or illustrated impression.

The last recorded frame on each microfiche shall contain the symbol  $\rightarrow$  (meaning "CONTINUED"), or the symbol  $\nabla$  (meaning "END"), whichever applies.

Maps, plates, charts, etc., may be filmed at different reduction ratios. Those too large to be entirely included in one exposure are filmed beginning in the upper left hand corner, left to right and top to bottom, as many frames as required. The following diagrams illustrate the method:



L'exemplaire filmé fut reproduit grâce à la générosité de:  
Ontario Institute for Studies in Education,  
R.W.B. Jackson Library

Les images suivantes ont été reproduites avec le plus grand soin, compte tenu de la condition et de la netteté de l'exemplaire filmé, et en conformité avec les conditions du contrat de filmage.

Les exemplaires originaux dont la couverture en papier est imprimée sont filmés en commençant par le premier plat et en terminant soit par le dernière page qui comporte une empreinte d'impression ou d'illustration, soit par le second plat, selon le cas. Tous les autres exemplaires originaux sont filmés en commençant par la première page qui comporte une empreinte d'impression ou d'illustration et en terminant par la dernière page qui comporte une telle empreinte.

Un des symboles suivants apparaîtra sur la dernière image de chaque microfiche, selon le cas: le symbole  $\rightarrow$  signifie "A SUIVRE", le symbole  $\nabla$  signifie "FIN".

Les cartes, planches, tableaux, etc., peuvent être filmés à des taux de réduction différents. Lorsque le document est trop grand pour être reproduit en un seul cliché, il est filmé à partir de l'angle supérieur gauche, de gauche à droite, et de haut en bas, en prenant le nombre d'images nécessaire. Les diagrammes suivants illustrent la méthode.

NUMBER 5

TWO CENTS



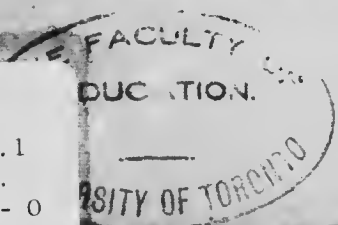
# THE ONTARIO COPY BOOKS

AUTHORIZED BY  
THE MINISTER OF EDUCATION



FOR USE IN  
THE SCHOOLS OF ONTARIO

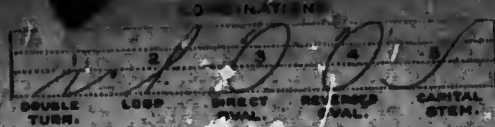
OT  
652.1  
Ont.  
19-- 0  
5



ISHED BY E·H·HARCOURT CO· LIMITED · TORONTO

ELEMENTS.

RIGHT CURVE, LEFT CURVE, LOWER TURN, UPPER TURN.



Main Stem

SHORT

STEM LETTERS

LETTERS

CAPITALS FROM DIRECT OVAL.

CAPITALS FROM CAPITAL STEM.

CAPITALS FROM REVERSED OVAL.

1 2 3 4 5 6 7 8 9 0

### INSTRUCTIONS

**FORM.** The standard forms of letters are shown on this page. Letters similar in form are grouped together and their lengths, widths, and positions are indicated by dotted lines. The pupil must have an accurate knowledge of the forms of letters if he is to make them correctly, and criticize his work intelligently.

**POSITION.** Study the positions shown on page four of the cover. The body is square with the desk and the feet rest level on the floor. The arm rests on the desk, and the wrist is flat with the hand resting on the nails of the third and fourth fingers. The pen is held lightly between the thumb and first finger, crossing this finger just forward of the knuckle joint, and the second finger at the root of the nail. The end of the thumb is opposite the joint of the first finger.

**MOVEMENT.** This is the basis of freedom, rapidity, and skill in writing. Type exercises for developing movement are shown on page four of the cover. In the "Drive and Draw" movement, Exercise eight, the arm moves forward and back on the muscles below the elbow, and the hand rests on the third and fourth fingers. In the "Lateral" movement, the direction is from side to side, as shown in Exercise nine. The "Drive and Draw" and "Lateral" movements are combined as shown in the oval. Progress in learning to write depends largely upon the amount of practice given to these movements.

*A clear conscience is better than untold riches.*

Better face a danger at once than be ever in fear.

Congenial occupation makes man's work easy.



Do your best, your very best, and do it every day.

Example is much more forcible than precept.

Friendship is the most sacred of moral bonds.

Great things were never begotten in an hour.

He who knows most grieves most for wasted time.

Judge not a friend until thou stand in his place.

Keep thy tongue from evil speaking

Learn now the great pleasure of doing good.



Make the most of time. it flies away so fast.

t. Noble thought enhances life and all its chances.

Onward and upward till the goal ye win.

Precious things are  
in heaps.

Quiet, patient industry will eventually win.

Rules are human: principles are divine.

Study how to spend as well as how to earn.

The true basis of good manners is self-reliance.



*Unreasonable haste is the direct road to error.*

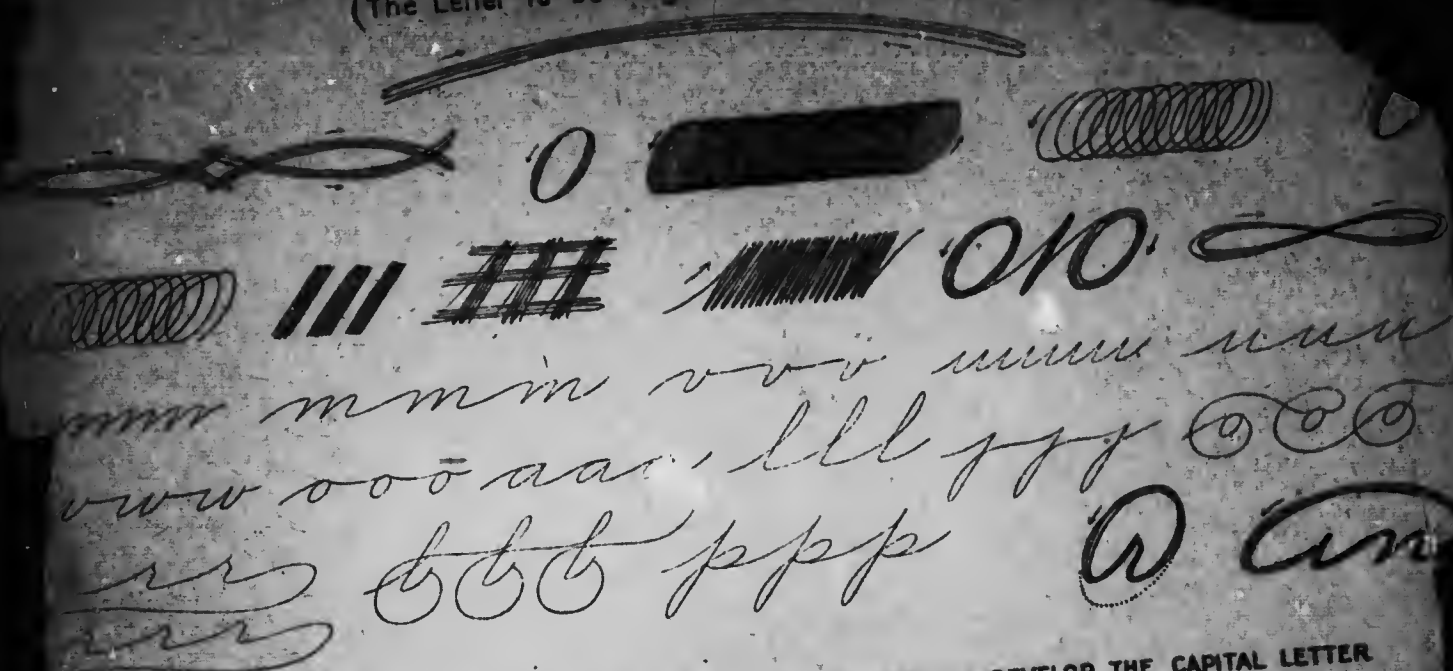
Virtue is the fount whence honour springs.

Who pleasure gives shall joy receive.

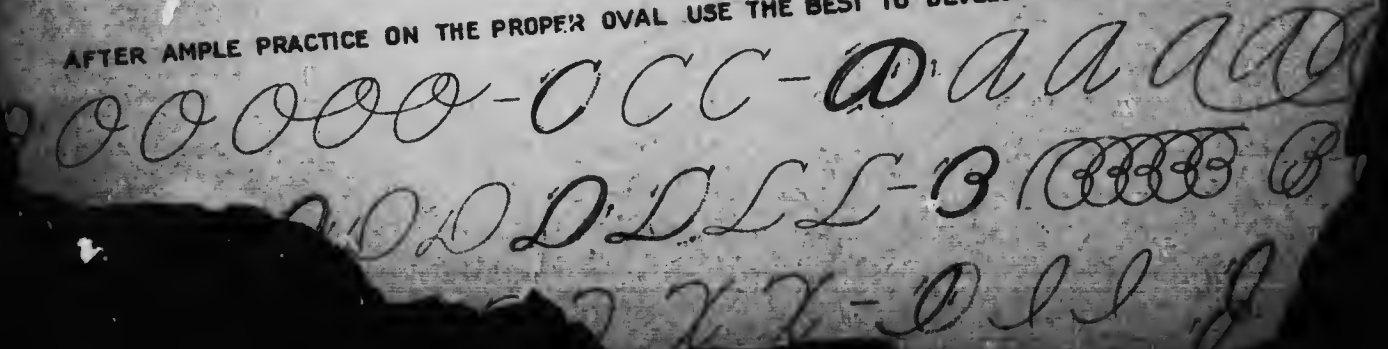
Youth is beautiful: its friendship is precious.

Zealously strive to improve your penmanship.

SOME TYPES  
(The Letter to be taught, define)



AFTER AMPLE PRACTICE ON THE PROPER OVAL USE THE BEST TO DEVELOP THE CAPITAL LETTER



# POSITIONS



ENTERED ACCORDING TO ACT OF PARLIAMENT OF CANADA IN THE CITY  
BY THE MINISTER OF EDUCATION FOR ONTARIO, IN THE YEAR

