

Technical and Bibliographic Notes/Notes techniques et bibliographiques

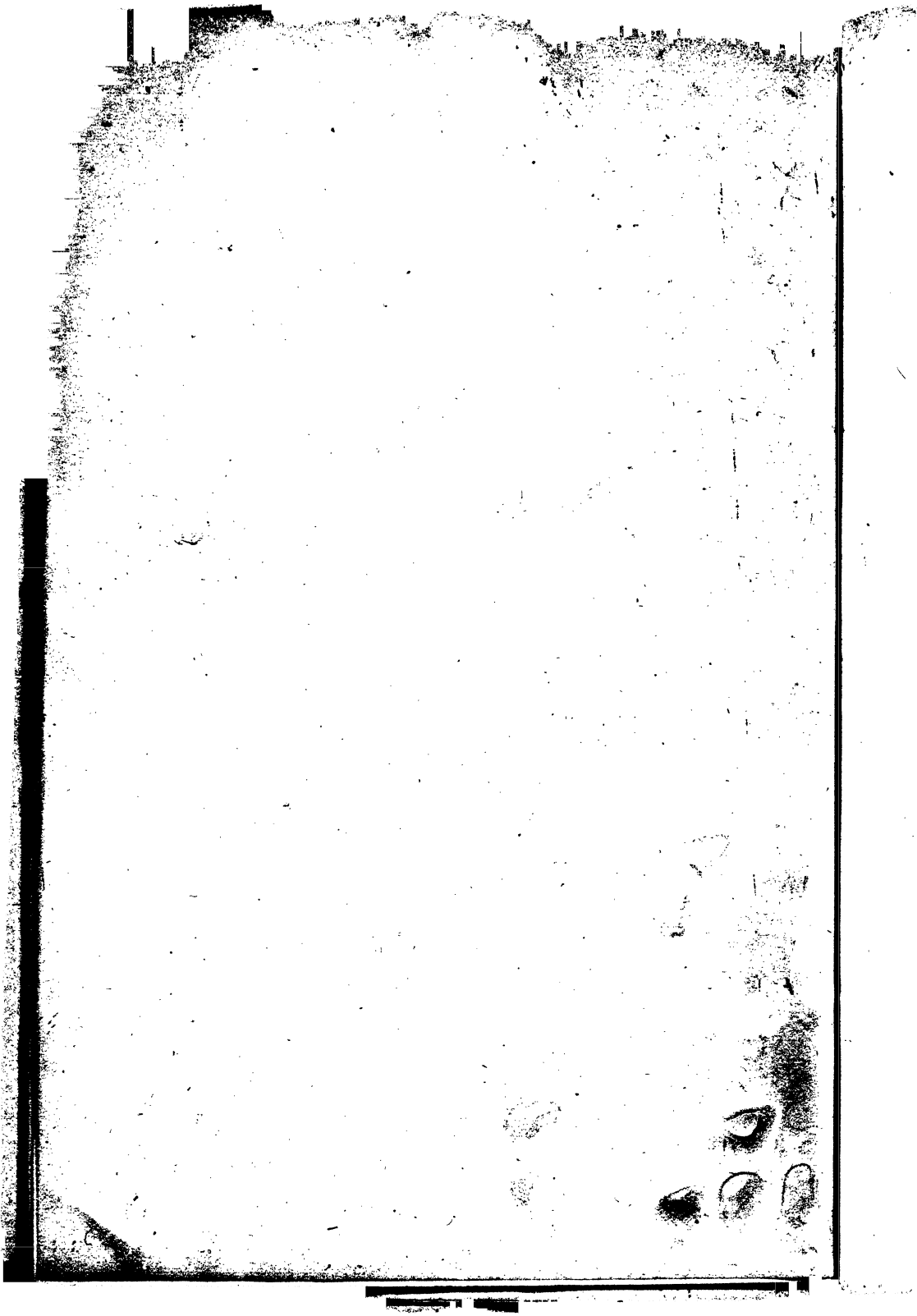
The Institute has attempted to obtain the best original copy available for filming. Features of this copy which may be bibliographically unique, which may alter any of the images in the reproduction, or which may significantly change the usual method of filming, are checked below.

L'Institut a microfilmé le meilleur exemplaire qu'il lui a été possible de se procurer. Les détails de cet exemplaire qui sont peut-être uniques du point de vue bibliographique, qui peuvent modifier une image reproduite, ou qui peuvent exiger une modification dans la méthode normale de filmage sont indiqués ci-dessous.

- | | |
|--|--|
| <input type="checkbox"/> Coloured covers/
Couverture de couleur | <input type="checkbox"/> Coloured pages/
Pages de couleur |
| <input type="checkbox"/> Covers damaged/
Couverture endommagée | <input type="checkbox"/> Pages damaged/
Pages endommagées |
| <input type="checkbox"/> Covers restored and/or laminated/
Couverture restaurée et/ou pelliculée | <input type="checkbox"/> Pages restored and/or laminated/
Pages restaurées et/ou pelliculées |
| <input type="checkbox"/> Cover title missing/
Le titre de couverture manque | <input checked="" type="checkbox"/> Pages discoloured, stained or foxed/
Pages décolorées, tachetées ou piquées |
| <input type="checkbox"/> Coloured maps/
Cartes géographiques en couleur | <input type="checkbox"/> Pages detached/
Pages détachées |
| <input type="checkbox"/> Coloured ink (i.e. other than blue or black)/
Encre de couleur (i.e. autre que bleue ou noire) | <input checked="" type="checkbox"/> Showthrough/
Transparence |
| <input type="checkbox"/> Coloured plates and/or illustrations/
Planches et/ou illustrations en couleur | <input type="checkbox"/> Quality of print varies/
Qualité inégale de l'impression |
| <input checked="" type="checkbox"/> Bound with other material/
Relié avec d'autres documents | <input type="checkbox"/> Includes supplementary material/
Comprend du matériel supplémentaire |
| <input type="checkbox"/> Tight binding may cause shadows or distortion
along interior margin/
La reliure serrée peut causer de l'ombre ou de la
distortion le long de la marge intérieure | <input type="checkbox"/> Only edition available/
Seule édition disponible |
| <input type="checkbox"/> Blank leaves added during restoration may
appear within the text. Whenever possible, these
have been omitted from filming/
Il se peut que certaines pages blanches ajoutées
lors d'une restauration apparaissent dans le texte,
mais, lorsque cela était possible, ces pages n'ont
pas été filmées. | <input type="checkbox"/> Pages wholly or partially obscured by errata
slips, tissues, etc., have been refilmed to
ensure the best possible image/
Les pages totalement ou partiellement
obscurcies par un feuillet d'errata, une pelure,
etc., ont été filmées à nouveau de façon à
obtenir la meilleure image possible. |
| <input type="checkbox"/> Additional comments:/
Commentaires supplémentaires: | |

This item is filmed at the reduction ratio checked below/
Ce document est filmé au taux de réduction indiqué ci-dessous.

10X	14X	18X	22X	26X	30X
<input type="checkbox"/>	<input type="checkbox"/>	<input type="checkbox"/>	<input checked="" type="checkbox"/>	<input type="checkbox"/>	<input type="checkbox"/>
12X	16X	20X	24X	28X	32X



CASE OF

LICHEN SCROFULOSUM IN A FEMALE.

BY FRANCIS J. SHEPHERD, M.D., C.M., M.R.C.S., ENG.

Surgeon to the Out-Door Department of the Montreal General Hospital;
Demonstrator of Anatomy, McGill University.

The following case, both on account of its rarity and interest, I think worthy of being placed on record:—

Sophie B., aged 22, unmarried, well nourished and healthy looking, came under my care on the 20th April, 1880, suffering from a skin eruption of the hands, which had lasted for three years. She had been treated by various physicians without any improvement, for as fast as the old spots disappeared new ones came out. On examination I saw that the eruption was confined to the hairy parts of the dorsal surfaces of the first phalanges and the hairy parts of the back of the hands, and consisted of a number of groups of minute papules of a brownish red colour. Each papule surrounded a hair follicle; the papules were quite dry and the patient said, never ran water. Rubbing the hand over the eruption it felt exactly like a nutmeg grater. She told me that occasionally it was very itchy, but as there were no excoriations or black crusts of dried blood I judged that this could not be a prominent symptom. The lymphatic glands of the neck and submaxillary region were much enlarged.

Lungs, on examination, were perfectly healthy. Recognizing the case as one of *Lichen Scrofulosum* I prescribed cod-liver oil in doses of a tablespoonful three times a day, and also directed her to keep the oil continually in contact with the skin by rubbing it in several times a day, and covering the hands with woollen gloves.

In two weeks she returned, the eruption was much in the same condition, but in addition to the papules, several bluish red tubercles, characteristic of the disease, were seen, about the size of split peas, and some large pustules which she told me had commenced as these bluish tubercles. There were also numbers of pigmented spots, the remains of old papules. I advised her to continue the same treatment, and explained to her that the cure, though tedious, was tolerably certain. I forgot to mention that in addition to the eruption on the hands a few papules had come out on the extensor surfaces of the legs, to which I directed her to apply cod-liver oil.

I saw her again on June 1st, at which time her condition was much improved. The eruption had entirely disappeared from the right hand, leaving spots of slight discoloration; on the left hand the eruption was fading, and no new papules were coming out, the only parts affected were the back of the first phalanx of the thumb and the back of the hand near the wrist. The enlarged lymphatic glands in the neck were much reduced in size.

On June 22nd the eruption had entirely disappeared both from the hands and legs, and there was no return when last seen early in November. The patient, by thus persevering in Hebra's cod-liver oil treatment for three months, had got rid of an eruption which had tormented her for over three years.

Remarks.—Hebra was the first to describe this form of Lichen which he always found associated with a scrofulous diathesis. In his work on Diseases of the Skin*, Hebra states that he had seen over fifty cases, all in males, between 15 and 25, and that this eruption occurs chiefly on the trunk, being rarely seen on the limbs. Now this case is remarkable from

*New Sydenham Society's Translation, vol. II., p. 54.

the eruption being confined to the limbs, and also from its occurring in a female. The only other case I ever saw of Lichen Scrofulosum in a female was under the care of Mr. Waren Tay at the Stamford Street Skin Hospital in London, and, strange to say, in this case also the eruption was principally on the backs of first phalanges and hands ; it was associated, if I remember correctly, with general psoriasis. Having seen the above mentioned case, greatly facilitated my diagnosis in this one.