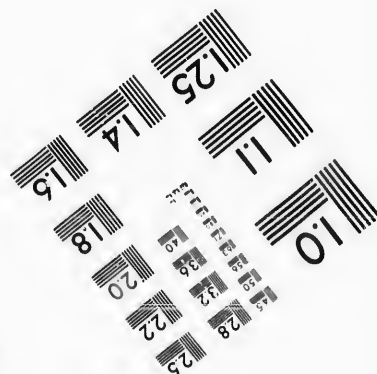
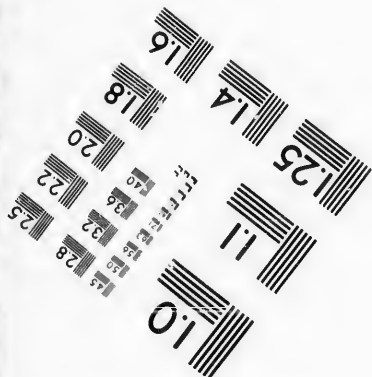
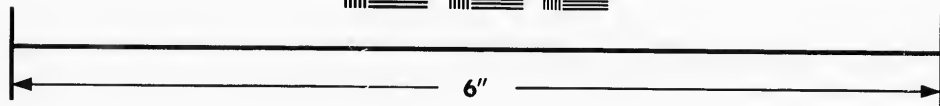
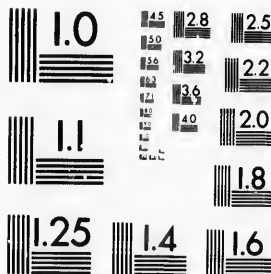


**IMAGE EVALUATION
TEST TARGET (MT-3)**



Photographic
Sciences
Corporation

23 WEST MAIN STREET
WEBSTER, N.Y. 14580
(716) 872-4503

15 28
16 30
17 32
18 34
19 36
20 38
21 40
22 42
23 44
24 46
25 48
26 50
27 52
28 54
29 56
30 58
31 60
32 62
33 64
34 66
35 68
36 70
37 72
38 74
39 76
40 78
41 80
42 82
43 84
44 86
45 88
46 90
47 92
48 94
49 96
50 98
51 100

**CIHM/ICMH
Microfiche
Series.**

**CIHM/ICMH
Collection de
microfiches.**



Canadian Institute for Historical Microreproductions / Institut canadien de microreproductions historiques

© 1987

11
10
9
8
7
6
5
4
3
2
1

Technical and Bibliographic Notes/Notes techniques et bibliographiques

The Institute has attempted to obtain the best original copy available for filming. Features of this copy which may be bibliographically unique, which may alter any of the images in the reproduction, or which may significantly change the usual method of filming, are checked below.

L'Institut a microfilmé le meilleur exemplaire qu'il lui a été possible de se procurer. Les détails de cet exemplaire qui sont peut-être uniques du point de vue bibliographique, qui peuvent modifier une image reproduite, ou qui peuvent exiger une modification dans la méthode normale de filmage sont indiqués ci-dessous.

- Coloured covers/
Couverture de couleur
- Covers damaged/
Couverture endommagée
- Covers restored and/or laminated/
Couverture restaurée et/ou pelliculée
- Cover title missing/
Le titre de couverture manque
- Coloured maps/
Cartes géographiques en couleur
- Coloured ink (i.e. other than blue or black)/
Encre de couleur (i.e. autre que bleue ou noire)
- Coloured plates and/or illustrations/
Planches et/ou illustrations en couleur
- Bound with other material/
Relié avec d'autres documents
- Tight binding may cause shadows or distortion along interior margin/
La reliure serrée peut causer de l'ombre ou de la distorsion le long de la marge intérieure
- Blank leaves added during restoration may appear within the text. Whenever possible, these have been omitted from filming/
Il se peut que certaines pages blanches ajoutées lors d'une restauration apparaissent dans le texte, mais, lorsque cela était possible, ces pages n'ont pas été filmées.
- Additional comments:/
Commentaires supplémentaires:
- Coloured pages/
Pages de couleur
- Pages damaged/
Pages endommagées
- Pages restored and/or laminated/
Pages restaurées et/ou pelliculées
- Pages discoloured, stained or foxed/
Pages décolorées, tachetées ou piquées
- Pages detached/
Pages détachées
- Showthrough/
Transparence
- Quality of print varies/
Qualité inégale de l'impression
- Includes supplementary material/
Comprend du matériel supplémentaire
- Only edition available/
Seule édition disponible
- Pages wholly or partially obscured by errata slips, tissues, etc., have been refilmed to ensure the best possible image/
Les pages totalement ou partiellement obscurcies par un feuillet d'errata, une pelure, etc., ont été filmées à nouveau de façon à obtenir la meilleure image possible.

This item is filmed at the reduction ratio checked below/
Ce document est filmé au taux de réduction indiqué ci-dessous.

10X	12X	14X	16X	18X	20X	22X	24X	26X	28X	30X	32X
					✓						

The copy filmed here has been reproduced thanks to the generosity of:

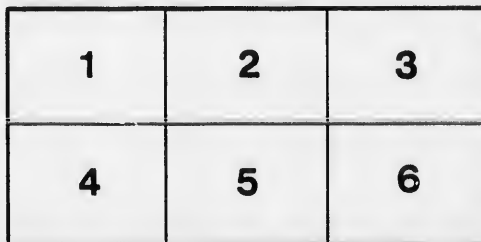
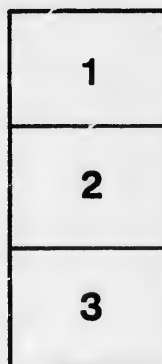
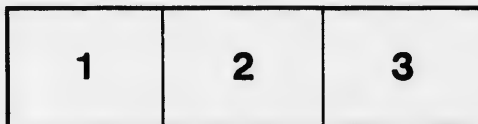
D. B. Weldon Library
University of Western Ontario
(Regional History Room)

The images appearing here are the best quality possible considering the condition and legibility of the original copy and in keeping with the filming contract specifications.

Original copies in printed paper covers are filmed beginning with the front cover and ending on the last page with a printed or illustrated impression, or the back cover when appropriate. All other original copies are filmed beginning on the first page with a printed or illustrated impression, and ending on the last page with a printed or illustrated impression.

The last recorded frame on each microfiche shall contain the symbol \rightarrow (meaning "CONTINUED"), or the symbol ∇ (meaning "END"), whichever applies.

Maps, plates, charts, etc., may be filmed at different reduction ratios. Those too large to be entirely included in one exposure are filmed beginning in the upper left hand corner left to right and top to bottom, as many frames as required. The following diagrams illustrate the method:



L'exemplaire filmé fut reproduit grâce à la générosité de:

D. B. Weldon Library
University of Western Ontario
(Regional History Room)

Les images suivantes ont été reproduites avec le plus grand soin, compte tenu de la condition et de la netteté de l'exemplaire filmé, et en conformité avec les conditions du contrat de filmage.

Les exemplaires originaux dont la couverture en papier est imprimée sont filmés en commençant par le premier plat et en terminant soit par la dernière page qui comporte une empreinte d'impression ou d'illustration, soit par le second plat, selon le cas. Tous les autres exemplaires originaux sont filmés en commençant par la première page qui comporte une empreinte d'impression ou d'illustration et en terminant par la dernière page qui comporte une telle empreinte.

Un des symboles suivants apparaîtra sur la dernière image de chaque microfiche, selon le cas: le symbole \rightarrow signifie "A SUIVRE", le symbole ∇ signifie "FIN".

Les cartes, planches, tableaux, etc., peuvent être filmés à des taux de réduction différents. Lorsque le document est trop grand pour être reproduit en un seul cliché, il est filmé à partir de l'angle supérieur gauche, de gauche à droite, et de haut en bas, en prenant le nombre d'images nécessaire. Les diagrammes suivants illustrent la méthode.

No 10
Recd
24th 95
James
Wm
Club of the Peace
W

LIST OF VOTERS

FOR THE

Township of Caradoc

FOR THE

YEAR 1895.

STRATHROY :
EVANS BROTHERS.
1895.



LIST OF VOTERS

~ FOR THE ~

Township of Caradoc

~ FOR THE ~

YEAR 1895.

STRATHROY :
EVANS BROTHERS.
1895.

SCHEDULE OF POST OFFICES.

- | | |
|------------------|-------------------|
| 1. MT. BRYDGES. | 13. OSMAN. |
| 2. STRATHROY. | 14. BURWELL ROAD. |
| 3. DELAWARE. | 15. LONDON. |
| 4. MUNCEY. | 16. WINDSOR. |
| 5. MELBOURNE. | 17. BYRON. |
| 6. CHRISTINA. | 18. ST. THOMAS. |
| 7. GLEN OAK. | 19. TEMPO. |
| 8. CAIRNGORM. | 20. AYLMER. |
| 9. AMIENS. | 21. GLENCOE. |
| 10. KOMOKA. | 22. TORONTO. |
| 11. POPLAR HILL. | 23. ARKONA. |
| 12. LONGWOOD. | |

Com

PAID

Jur. No.
Ro
534

1

97

J 129

J 134

J 127

J 128

J 138

J 139

J 126

J 130

J 131

J 135

J 133

J 136

J 112

VOTERS' LIST 1895, Municipality of Caradoc.

Polling Sub-Division No. 1,

Comprising all that portion of the Township lying East of the Side Road
between Lots 12 and 13, and South of the 1st Con.

Polling place at School House, School Section No. 3.

**PART I.—Persons Entitled to Vote at BOTH Municipal Elections and Elections
to the Legislative Assembly.**

Jur.	No. on Roll.	NAME.	LOT.	Concession or Street.	Other Description.	P.O.
	534	Adams, James	pt S W cor 18	R 1 N	M F and O	3
	1	Anderson, John D.	N hf 18	R 1 S	M F and O	3
	97	Brown, David C.	pt N hf 22 and 23	R 1 N	M F and O	3
J	129	Bateman, George	N pt 4, pt S hf 12	EMR, R 1 S	M F and O	4
J	134	Brodie, Duncan C	pt S hf 18	R 3 S	M F and O	14
J	127	Brodie, Hugh	E pt 6	EMR	M F and O	14
J	128	Brodie, John	W pt 6	EMR	M F and O	4
J	138	Bateman, Charles	W pt 18	R 3 S	M F and O	14
J	139	Bateman, Melville	W pt 18	R 3 S	M F and O	14
J	126	Bartlett, Wm	W hf S hf 17	R 1 S	M F and O	3
J	130	Broom, Samuel	E hf 4	WMR	M F and O	4
J	131	Burwell, Mahlon	N pt 17	R 5 S	M F and O	14
J	135	Burwell, Geo V	pt 18	R 4 S	M F and O	14
J	133	Burwell, John M	S hf S hf 17	R 4 S	M F and O	14
J	136	Bartlett, Jonathon	S hf 19, pt S hf 20	R 1 S	M F and O	3
J	112	Bowman, Martin	W pt S hf 21	R 1 S	M F and T	3

ROAD.

Polling Sub-Division No. 1.

Jur.	No. on Roll.	NAME.	LOT.	Concession or Street.	Other Description.	P.O.
J	256	Clark, John G.	N pt 19	R 4 S.	M F and O.	14
	280	Coulter, John	W hf 4	W M R	M F and O.	4
J	281	Coulter, Frank	W hf 4	W M R	M F and T.	4
J	245	Collins, Thomas	E hf 5.	W M R	M F and O.	4
	246	Collins, Patrick	E hf 5.	W M R	M F & F S.	4
J	277	Carruthers, Geo B.	S hf 16, pt 15.	R 1 N.	M F and O.	6
	278	Carruthers, Geo A.	S hf 16, pt 15.	R 1 N.	M F & F S.	6
J	251	Cox, James	E	W M R	M F and O.	4
J	273	Coveny, Thos	N hf 19	R 3 S.	M F and O	14
J	274	Coveny, John	S hf 17.	R 3 S.	M F and O.	14
J	282	Cobban, Wm	S pt 3 and o p	W M R	M F and O.	4
	1297	Chambers, James	King St 5, Del W.	R 1 N.	M F and O.	3
J	285	Chambers, John B.	pt 12	R 5 S.	M F and O.	4
J	247	Chambers, Thos.	E pt N hf 5.	W M R	M F and O.	4
J	248	Cobban, Robert	S pt 12.	E M R.	M F and O.	4
J	252	Clark, John N	N hf 3	E M R.	M F and O.	4
	253	Clark, Alex	N hf 3	E M R.	M F & F S.	4
	254	Clark, Nathaniel	N hf 3	E M R.	M F & F S.	4
	255	Clark, John.	N hf 3	E M R.	M F & F S.	4
	249	Clark, William	pt 12.	R 5 S.	M F and O.	4
J	287	Craner, John	S hf 17	R 5 S.	M F and T.	3
J	311	Donaldson, David J	N hf 20	R 1 S.	M F and O.	3
	316	Daunt, George.	pt N hf 20	R 1 N.	M F and O.	3
J	315	Davey, Emanuel.	pts 18 and 19.	R 1 N.	M F and T.	1
	569	Donovan, Wm.	14 to 19 Del W	R 1 N.	M F and T.	3

Jur.	No. on Roll.
	325
	326
J	327
J	355
J	358
	957
	359
	360
	361
	362
	367
	366
	369
J	370
	368
	373
	363
	371
	372
	1287
J	433
J	429
J	428
	1285
J	420

Polling Sub-Division No. 1.

Jur.	No. on Roll.	NAME.	LOT.	Concession or Street.	Other Description.	P.O.
	325	Erwin, George	E hf S hf 14	R 1 S	M F and O	6
	326	Erwin, Albert	E hf S hf 14	R 1 S	M F & F S	6
J	327	Erwin, James	W hf S hf 14	R 1 S	M F and O	6
J	355	Fisher, Wm	N hf 20	R 1 N	M F and T	3
J	358	Fisher, James jr	N hf 16	R 1 S	M F and T	6
	957	Fisher, George	pt N hf 13	R 1 S	M F and O	6
	359	Fisher, James sr	N hf 13	R 1 S	M F and O	6
	360	Fisher, Wm H	N hf 13	R 1 S	M F & F S	6
	361	Fisher, Francis	N hf 13	R 1 S	M F & F S	6
	362	Fisher, Fred	N hf 13	R 1 S	M F & F S	6
	367	Faulds, Edward A	7	W M R	M F & F S	4
	366	Faulds, Thomas	7	W M R	M F and O	4
	369	Faulds, George M	7	W M R	M F & F S	4
J	370	Faulds, Wm M	2	W M R	M F and O	4
	368	Faulds, John F	7	W M R	M F & F S	4
	373	Forsythe, John	S pt 1	E M R	M F and O	4
	363	Fisher, James H	pt S hf 13	R 1 N	M F and O	6
	371	Forsythe, George	S pt 1	W M R	M F and O	4
	372	Forsythe, Arch	S pt 1	W M R	M F and O	4
	1287	Graham, Alex	18,19,20 Birm st Del W	R 1 N	M F and T	3
J	433	Giles, John	S hf 13	R 1 S	M F and O	6
J	429	Guest, Wm A	N hf 20	R 4 S	M F and O	3
J	428	Giles, Wm jr	22, 23 pt 21	R 4 S	M F and T	3
	1285	Giles, Wm sr	3 & 4 King st Del W	R 1 N	M F and O	3
J	420	Glennie, Geo D	S hf 22	R 1 N	M F and O	3

Polling Sub-Division No. 1.

Jur.	No. on Roll.	NAME.	LOT.	Concession or Street.	Other Description.	P.O.
	421	Glennie, Gordon	S hf 22	R 1 N	M F & F S	3
	422	Glennie, J W	S hf 22	R 1 N	M F & F S	3
	1165	Gardiner, David	pt S hf 18	R 1 N	M F and O	3
	491	Haws, George	S E cor N hf 22	R 1 N	M F and O	3
J	497	Haws, John	pt 4 and 5	E M R	M F and T	14
	498	Haws, Henry	pt 4 and 5	E M R	M F & F S	14
J	438	Hetley, Wesley	W hf S hf 15	R 1 N	M F and O	6
J	564	Howe, John M	N pt 7	E M R	M F and O	3
J	504	Howe, John F	N hf 17	R 2 S	M F and O	3
	501	Haggerty, John sr	S hf 20 and o p	R 4 S	M F and O	14
J	499	Haggerty, George	S hf 20 and o p	R 4 S	M F and O	14
	500	Haggerty, Swanton	S hf 20 and o p	R 4 S	M F & F S	14
J	1288	Haws, Samuel	A st 12 Del W	R 1 N	M F and O	3
J	503	Haggerty, John jr	pt N hf 18	W M R	M F and T	14
J	513	James, Henry	S W cor S hf 20 & o p	R 1 N	M F and O	3
J	512	Jenkins, Alfred	E pt S hf 17	R 1 S	M F and O	3
	514	Jones, Edwin	Bkn Ft 20	R 5 S	M F and O	14
J	516	Jarman, Henry jr	N hf 20	R 2 S	M F and O	3
	515	Jarman, Henry sr	N hf 20	R 2 S	M F and O	3
	517	Jarman, Sidney	N hf 20	R 2 S	M F & F S	3
J	533	Kershaw, Charles	N W pt N hf 19	R 1 S	M F and O	3
	538	King, Thomas	S cor S hf 17	R 2 S	M F and O	3
	539	King, Wm T	S cor S hf 17	R 2 S	M F and T	3
	535	Karl, Leonard	S W cor 18	R 1 N	M F and T	3

Jur.	No. on Roll.
	1290
	490
J	561
J	567
	568
J	565
	575
J	560
J	570
J	571
J	572
J	566
J	563
J	574
	1289
	706
J	712
	715
J	716
J	713
J	714
	1286
J	717
J	710
J	719

Polling Sub-Division No. 1.

Jur.	No. on Roll.	NAME.	LOT.	Concession or Street.	Other Description.	P.O.
	1290	Lewis, John	Birm st 21,22,23, Del W	R 1 N	M F and O	3
	490	Lowthian, Richard	W pt N hf 22	R 1 N	M F and O	3
J	561	Lowthian, Rich V	pt 23	R 1 N	M F and O	3
J	567	Lockwood, Henry jr	S pt N hf 20 & o p	R 1 S, R 1 N	M F and O	3
	568	Lockwood, Daniel B	S pt N hf 20 & o p	R 1 S, R 1 N	M F & F S	3
J	565	Luce, Alfred	pt 7	EMR	M F and T	3
	575	Lewis, Charles	pt 12	EMR	M F and T	4
J	560	Lockwood, Chas H	S hf 21	R 1 N	M F and O	3
J	570	Lockwood, Wm W	pt S hf 20	R 1 N	M F and O	3
J	571	Luce, Asa	pt 17	R 1 S, R 1 N	M F and O	3
J	572	Luce, George	pt 17	R 1 S, R 1 N	M F & F S	3
J	566	Lockwood, John A	N hf 15	R 1 S	M F and O	6
J	563	Langfield, Wm H	24	R 1 S	M F and T	3
J	574	Laing, James	2	EMR	M F and O	4
	1289	Lockwood, Henry sr	.9 to 13 K st, Del W	R 1 N	M F and O	3
	706	McKenzie, John	S W cor S hf 13	R 1 N	M F and O	6
J	712	McGregor, Peter	pt 1 and D	W M R	M F and O	4
	715	McIntyre, Dugald	pt 12	W M R	M F and O	4
J	716	McGregor, Alex	pt 12	R 5 S	M F and O	4
J	713	McGregor, Thos	pt D	W M R	M F and O	4
J	714	McGregor, John jr	S pt D	W M R	M F and O	4
	1286	McFee, Alex	Bir st 15,19,20 Del W	R 1 N	M F and O	3
J	717	McDonald, Thos	N hf N hf 17	R 3 S	M F and O	14
J	710	McKellar, Arch	S hf 16	R 1 S	M F and T	3
J	719	McDonald, Hartman	N hf 21	R 1 N	M F and T	1

Polling Sub-Division No. 1.

Jun.	No. on Roll.	NAME.	LOT.	Concession or Street.	Other Description.	P.O.	Jun.
J	736	Nagle, John	S pt 19	R 1 N	M F and O	3	J
J	737	Nagle, Walter	E hf N hf 17	R 1 S	M F and O	3	J
J	738	Nash, Ephraim	N hf 14	R 1 S	M F and O	6	J
	739	Nash, Franklin	N hf 14	R 1 S	M F & FS	6	J
J	748	Nagle, Robert	S hf 18	R 1 S	M F and O	3	J
	749	Nagle, Francis E	S hf 18	R 1 S	M F & FS	3	J
	744	Nagle, Samuel	N pt 3	W M R	M F and O	4	J
	1300	Nagle, Thomas	K st 1 and 2	Del W R 1 N	M F and O	3	J
J	754	Orr, Rowland	W pt N hf 5	W M R	M F and O	6	J
J	816	Pulling, James	W hf S hf 18	R 2 S	M F and O	14	J
J	820	Pulling, Henry	pt S hf S hf 17	R 2 S	M F and O	14	J
	1292	Portsmouth, Peter	26 and o p	Del W R 1 N	M F and T	3	J
	1293	Portsmouth, Rich	26 and o p	Del W R 1 N	M F and T	3	J
	1294	Portsmouth, A E	26 and o p	Del W R 1 N	M F and T	3	J
	818	Price, Richard J	S hf 8 and o p	W M R	M F & FS	14	J
	819	Price, Charles F	S hf 8 and o p	W M R	M F & FS	14	J
J	1295	Penfold, Henry	pt 23, 24 and o p	R 1 N	M F and O	3	J
	1296	Palling, Wm	Sewel lot & 6,7,	Del W R 1 N	M F and O	3	J
	1298	Perkins, Levi	5 K st	Del W R 1 N	M F and T	3	J
J	865	Reep, Wm sr	N W pt 20	R 3 S	M F and O	3	J
J	866	Reep, Wm jr	N W pt 20	R 3 S	M F and T	3	J
J	867	Reep, John	N W pt 20	R 3 S	M F and T	3	J
J	854	Roekey, Wm H	pt gore 20 and 21	R 1 N	M F and O	1	J
J	863	Robinson, Robt	W hf 5	EM R	M F and O	4	J

Polling Sub-Division No. 1.

Other Description. P.O.
M F and O . 3
M F and O . 3
M F and O . 6
M F & F S . 6
M F and O . 3
M F & F S . 3
F and O . 4
F and O . 3
F and O . 6
F and O . 14
F and O . 14
F and T . 3
F and T . 3
F and T . 3
F & F S . 14
F & F S . 14
F and O . 3
F and O . 3
F and T . 3
F and O . 3
F and T . 3
F and O . 1
F and O . 4

Jur.	No. on Roll.	NAME.	LOT.	Concession or Street.	Other Description.	P.O.
	864	Robinson, Robt E	W hf 5	EMR	M F & F S	4
J	857	Reily, John D	E hf S hf 19	R 2 S	M F and O	14
J	868	Reily, Wm H	W hf S hf 19, pt 18	R 2 S	M F and O	14
J	870	Reily, Wm J	pt blk A	EMR	M F and T	14
J	871	Reily, Robt H	pt blk A	EMR	M F and T	14
	J1110	Stuart, William	E hf S hf 15	R 1 S	M F and T	3
J	954	Seabrook, Sidney	22, 23, pt 21	R 1 S	M F and O	3
J	950	Stiltz, Charles	E hf N hf 19	R 1 N	M F and O	1
	956	Smith, Robert	pt S hf 13	R 1 N	M F and O	6
J	959	Shaw, Wm	W hf S hf 15	R 1 S	M F and T	6
J	962	Sweeney, John	S pt 12 and o p	R 5 S	M F and O	3
J	961	Smith, Arthur G	pt 12	R 5 S	M F and T	4
J	952	Stover, Peter	E pt N hf 13	R 1 N	M F and T	1
	953	Stover, Joseph	E pt N hf 13	R 1 N	M F & F S	1
	958	Solloman, Sivaon	pt N hf 13	R 1 S	M F and T	6
	J1010	Thompson, Thos	S hf 14	R 1 N	M F and O	6
J	1009	Toles, Peter	E pt S hf 18 and o p	R 1 N	M F and O	1
	1012	Tull, Samuel	S hf 13	R 1 N	M F and O	6
	1013	Tull, David	S hf 13	R 1 N	M F & F S	6
J	1017	Tull, John	N hf S hf 17 and o p	R 2 S	M F and O	1
J	1016	Thomas, Joseph	S W pt 21	R 2 S	M F and T	3
	1299	Vrooman, John	S Del W	R 1 N	M F and O	3
	1035	Vennor, John	pt 1	EMR	M F and O	4
J	1034	Vail, John	N hf 14	R 1 N	M F and O	6

Polling Sub-Division No. 1.

Jur.	No. on Roll	NAME.	LOT.	Concession or Street.	Other Description.	P.O.
J1122		Weld, Octavus	S hf 20	R 2 S	M F and O	3
	1099	Waters, Wm H	N W cor N hf 18	R 1 N	M F and O	1
	1114	Whiting, James W	N pt E hf 4	EM R	M F and O	14
	1115	Whiting, Wm C J	N pt E hf 4	EM R	M F & F S	14
J1111		Williamson, John	E hf S hf 16	R 1 S	M F and O	6
J1112		Whiting, Wm B	pt 1	W M R	M F and O	4
	1113	Whiting, Wm F	pt 1	W M R	M F & F S	4
J1117		Walker, Barton	E hf 5	EM R	M F and O	14
	1119	Walker, Arch	E hf 5	EM R	M F & F S	14
J1120		Wightman, James	N hf 17	R 4 S	M F and O	14
	1121	Wightman, William	N hf 17	R 4 S	M F & F S	14
J1100		Waters, Archibald	W pt N hf 18	R 1 N	M F and O	1
	1102	West, Wm T	N cor N hf 22	R 1 N	M F and O	3
J1118		Walker, John S	E hf 5	EM R	M F and T	14
J1015		Weld, Henry J	S W pt 21	R 2 S	M F and O	3
J1124		Wightman, John	pts 18 and 19	R 4 S	M F and T	3

PART II.—Persons Entitled to Vote at Municipal Elections ONLY.

	20	Allan, Robert	W hf S hf 21 and o p	R 1 N	O	3
	111	Acres, Henry	W pt S hf 21	R 1 S	O	3
	286	Burwell, Rachel A	S hf 17	R 5 S	O	15
	718	Clark, Thursa	pt N hf 21	R 1 N	O	1
	314	Clark, Joseph	pt 18 and 19	R 1 N	O	18
	257	Clark, Nathaniel jr	S E hf N hf 19	R 4 S	O	14

Polling Sub-Division No. 1.

Other
Description. P.O.
F and O.. 3
F and O.. 1
F and O.. 14
F & F S.. 14
F and O.. 6
F and O.. 4
F & F S.. 4
F and O.. 14
F & F S.. 14
F and O.. 14
F & F S 14
F and O.. 1
F and O.. 3
F and T.. 14
F and O.. 3
F and T.. 3

LY.

Jur.	No. on Roll.	NAME.	LOT.	Concession or Street.	Other Description.	P.O.
	354	Fisher, Rachel	N hf 20	R 1 N	O	3
	427	Gowanlock, George	pt 21	R 4 S	O	19
	408	Goodrich, Nancy	W cor S hf 17	R 1 S	O	6
	495	Higgs, Mary	S pt 1	E M R	O	4
	746	Nagle, Amelia	N hf 18	R 2 S	O	3
	817	Price, Mary	S hf 8 and o p	W M R	O	1
	502	Price, T E	pt N hf 18	W M R	O	22
	1291	Parfitt, Albion	.26 and o p Del W	R 1 N	O	15
	1123	Rowland, Edward	pts 18 and 19	R 4 S	O	2
	496	Stuart, John	pt 4 and 5	E M R	O	14
	869	Scott, Martha	pt blk A	E M R	O	2

PART III.—Persons Entitled to Vote at Elections to the Legislative Assembly ONLY.

..... 3
..... 3

..... 15

..... 1
..... 18
..... 14

	272	Covney, Edward	S hf 17	R 3 S	M F	14
	284	Cleary, John	pt 12	W M R	M F	4
	1303	Guest, L H	N hf 20	R 4 S	M F	3

Polling Sub-Division No. 1.

Jur. No. on Roll.	NAME.	LOT.	Concession or Street.	Other Description.	P.O.
	487 Hay, John	E pt 21	R 2 S	M F	3
	711 McGregor, John sr	pt 1	W M R	M F	4
	743 Nevills, William	S pt 8	W M R	M F	6
	855 Robertson, Joseph	Del West	R 1 N	M F	3
	960 Smith, Fred	2	W M R	M F	4
	955 Smith, Stephen	N hf 18	R 1 S	M F	3
	1103 West, George	N cor N hf 22	R 1 N	M F	3
	1104 Wilson, John	S hf 19	R 1 N	M F	3

Comp

PART

Jur. No. or Roll.

J 106 B
 J 108 B
 J 120 B
 J 119 B
 121 B
 J 122 B
 J 124 B
 118 B
 J 125 B
 J 110 B
 1238 B
 1240 B
 1234 B
 J1005 B
 1236 B

Other description. P.O.

..... 3

..... 4

..... 6

..... 3

..... 4

..... 3

..... 3

..... 3

Polling Sub-Division No. 2,

Comprising all that portion of the Township lying West of the Side Road between Lots 12 and 13, and South of the 2nd Con.

Polling place at School House, School Section No. 1.

PART I.—Persons Entitled to Vote at BOTH Municipal Elections and Elections to the Legislative Assembly.

Jur.	No. on Roll.	NAME.	LOT.	Concession or Street.	Other Description.	P O
J	106	Beattie, Samuel R.	W hf S hf 6	1	M F and O.	5
J	108	Bateman, Allan W.	S hf 10	1	M F and O.	6
J	120	Bateman, Wm R	W qr S hf 12, pt 12	R 1 S, R 1 N.	M F and O.	6
J	119	Bateman, Thomas	W hf S hf 12	R 1 N.	M F and O.	6
	121	Bateman, Robert	pt S hf 11	R 1 N.	M F and O.	6
J	122	Bateman, Ed A	S hf 10	R 1 N.	M F and O.	6
J	124	Bateman, Archie C.	pt N hf 10 and o p	R 1 S.	M F and O.	6
	118	Bateman, Chas T	S E cor S hf 12	R 1 N.	M F and O.	6
J	125	Bateman, Sydney	S E cor S hf 12	R 1 S.	M F and O.	6
J	110	Bateman, Wellington	N hf 12	R 1 N.	M F and T.	6
	1238	Bennett, Geo M	36, 37, 38 Melb.	R 1 N.	M F and T.	5
	1240	Balsdon, Christop'er J.	sub-lot 1, Melb	R 1 N.	M F and T.	5
	1234	Beaumont, Robert	19 Melb	R 1 S.	M F and O.	5
J	1005	Bond, Arthur	W hf N hf 3	1	M F and T.	12
	1236	Berdan, George	11 Melb	R 1 N.	M F and T.	5

Polling Sub-Division No. 2.

Jur.	No. on Roll.	NAME.	LOT.	Concession of Street.	Other Description.	P.O.
J	263	Cawthrope, Geo	N hf 1	1	M F and O	12
J	264	Cawthrope, Geo E	E hf S hf 2	3	M F and O	12
	261	Clark, Nathaniel sr	N hf 10	1	M F and O	1
	578	Chalcraft, —	pt N hf 9	R 1 N	M F and T	6
J	262	Clark, Wm	N hf 10	1	M F & F S	1
J	271	Cavan, Charles	E hf S hf 4	1	M F and O	5
	258	Coleman, Wm H	N hf 11	1	M F and O	1
J	259	Coleman, Darius	N hf 11	1	M F and O	1
J	260	Coleman, Angus	N hf 11	1	M F & F S	1
J	267	Cooper, Geo F	S hf W hf 2 and o p	1	M F and T	1
	270	Caven, Hugh	W hf S hf 4	1	M F and O	5
J	268	Caven, Caleb	W hf S hf 4	1	M F and O	5
J	269	Caven, James	W hf S hf 4	1	M F and O	5
J	241	Carruthers, Robt	pt N hf 6, pt S hf 6	R 1 N	M F and O	5
J	279	Carruthers, Arthur	pt S hf 5, pt 6	R 1 N	M F and O	5
J	243	Carruthers, James	S hf 4, pt S hf 5	R 1 N	M F and O	5
J	244	Campbell, John C	pt N hf 1	R 1 S	M F and O	5
	1244	Coulter, Ralph	47, 48	R 1 N	M F and O	5
	1241	Cooper, James	56, pt 55 Mel & o p	R 1 N	M F and O	5
	1242	Cooper, John	29, 30 Mel	R 1 N	M F and O	5
	1245	Campbell, Neil	sub lot 10, pt 1	R 1 N	M F and O	5
	1246	Campbell, Joseph	17 and 18, Mel	R 1 S	M F and O	5
	1247	Collier, James	17 and 18, Mel	R 1 S	M F and T	5
J	323	Errett, Thomas	N hf 3	R 1 N	M F and O	5
J	324	Errett, Henry	E hf S hf 7	R 1 N	M F and O	5
J	364	Fenwick, Edward	S hf 8	R 1 N	M F and O	6

Jur. No. on Roll.
 J 365 F
 J 353 F
 J 425 G
 J 423 G
 J 426 G
 1249 G
 1250 G
 1257 H
 J 485 H
 J 484 H
 J 486 H
 J 352 H
 492 H
 J 494 H
 J 489 H
 1252 H
 1256 H
 1254 H
 1255 H
 1253 H
 107 H
 J 483 H
 1257 H
 1261 J

Jur.	No. on Roll.	NAME.	LOT.	Concession or Street.	Other Description.	P.O.
	530	Kidd, Thomas	S hf 9	1	M F and O	6
J	531	Kidd, Jos K	E hf N hf 10	R 1 N	M F and O	6
J	532	Kidd, John J	E hf N hf 10	R 1 N	M F and O	6
J	537	Kain, John	S cor S hf 11	R 1 N	M F and T	6
J	573	Lucas, Robert	pt S hf 11	R 1 S	M F and T	6
	1263	Long, Joseph	1, 13 to 16 Melb	R 1 N	M F, O & T	5
	1006	Marshman, Simeon	E hf 3	1	M F and O	5
	586	Mills, James	S hf 9	R 1 N	M F and O	6
	587	Mills, Alfred	S hf 9	R 1 N	M F & F S	6
	590	Marshman, George	N W cor N hf 2	R 1 S	M F and O	5
J	580	Mills, Edmund	E hf N hf 12	R 1 S	M F and O	6
J	583	Muldon, John	W hf N hf 10	R 1 N	M F and O	6
J	587	Marshman, Job	N hf 7, S hf 8	R 1 S	M F and O	5
	700	McRoberts, John sr	N hf 5	1	M F and O	12
J	702	McRoberts, James	N hf 4	1	M F and O	12
J	701	McRoberts, John jr	N hf 5	1	M F and O	12
J	703	McCracken, Henry	E hf S hf 2	1	M F and O	5
	696	McCracken, Samuel	N hf 7 and o p	1	M F and O	12
	697	McCracken, Ernest	N hf 7 and o p	1	M F & F S	12
J	708	McNeil, Malcolm	pt S hf 1	R 1 S	M F and O	5
	709	McNeil, John A	pt S hf 1	R 1 S	M F and O	5
	1267	McLellan, David	E cor mill prop	R 1 N	M F and T	5
J	707	McClurg, George	S W pt S hf 7	R 1 S	M F and O	6
	705	McCracken, Thos F	N hf 9	R 1 N	M F & F S	6

Jur. N
I
J 73
J 74
J 74
J 126
J 74
1270
J 815
1272
J 1107
J 856
J 858
860
861
1273
J 862
J 1274
967
J 968
J 969
J 938
J 948
949
1276
J 946

Polling Sub-Division No. 2.

Other Description. P.O.
 M F and O . 6
 M F and O . 6
 M F and O . 6
 M F and T . 6
 M F and T . 6
 M F, O & T . 5
 M F and O . 5
 M F and O . 6
 M F & F S . 6
 M F and O . 5
 M F and O . 6
 M F and O . 6
 M F and O . 5
 M F and O . 12
 M F and O . 12
 M F and O . 12
 F and O . 5
 F and O . 12
 F & F S . 12
 F and O . 5
 F and O . 5
 F and T . 5
 F and O . 6
 F & F S . 6

Dist.	No. on Roll.	NAME.	LOT.	Concession or Street.	Other Description.	P.O.
J	733	Near, Wilson	N hf 4	R 1 N	M F and O	5
J	741	Nagle, Charles	S hf 4 and other prem	R 1 S	M F and O	5
J	740	Nagle, Thos E	W hf S hf 7	R 1 N	M F and O	5
J	1268	Niehols, Richard	1 and 2, Melb	R 1 N	M F and T	5
J	742	Nevills, Ezekiel	S hf 11	R 1 S	M F and T	6
	1270	Peteh, Isaac	sub 9, Melb	R 1 N	M F and O	5
J	815	Prentice, Charles	pt S hf 3	1	M F and O	5
	1272	Parr, Robert	25 and 26 Melb	R 1 N	M F and T	5
J	1107	Richards, Wm C	pt N hf 2	R 1 S	M F and O	5
J	856	Richards, George jr	E pt N hf 4	R 1 S	M F and O	5
J	858	Richards, Wilson	W pt 3, pt S hf 1	R 1 S	M F and O	5
	860	Richards, Geo sr	N hf 5, E pt 3	R 1 S, R 1 N	M F and O	5
	861	Richards, James	N hf 5, E pt 3	R 1 S, R 1 N	M F & F S	5
	1273	Richards, Edmund	26, 28 Melb	R 1 N	M F and O	5
J	862	Ridgway, Philip F	S hf 10	R 1 S	M F and O	6
J	1274	Robinson, John W	59 to 63 Melb	R 1 N	M F and T	5
	967	Small, Andrew sr	S hf 7	1	M F and O	5
J	968	Small, Robert	S hf 7	1	M F and O	5
J	969	Small, William	S hf 7	1	M F and O	5
J	938	Small, James	W hf N hf 8	1	M F and T	1
J	948	Sawyer, Wm E	pt S hf 11	1	M F and O	1
	949	Sawyer, Geo E	pt S hf 11	1	M F & F S	1
	1276	Seudamore, Henry T	71, 40, 41 Melb	R 1 N	M F and O	5
J	946	Small, Andrew jr	E hf N hf 6	1	M F and O	5

Jur. No. on Roll.	NAME.	LOT.	Concession or Street.	Other Description.	P.O.
J1003	Trott, Wm S	N hf 9, E hf N hf 8	1	M F, T & O	1
J1008	Trott, Edward	N hf 11	R 1 N	M F and O	6
J1277	Tolson, Wm	12 Melb	R 1 N	M F and T	5
J1278	Tolson, John	73, 74, 75, 76 Melb	R 1 N	M F and O	5
J1279	Tolson, Wm E	73, 74, 75, 76 Melb	R 1 N	M F and O	5
J1280	Tolson, Jos H	73, 74, 75, 76 Melb	R 1 N	M F and O	5
J1014	Trayte, George	pt E hf N hf 1	R 1 S	M F and O	5
J1004	Taylor, John	E hf N hf 2	1	M F and T	12
J1007	Tanner, George	E hf 3	1	M F and T	5
J1106	Williams, Wm E	E hf N hf 8	R 1 S	M F and O	6
1109	Williams, Richard	9	R 1 S	M F and O	6
1283	Wellman, George	53, 54, 55 Melb	R 1 N	M F and O	5
J1103	Williams, Thos	pt N hf 2	R 1 S	M F and T	5
1282	Williamson, Chas	N cor Mill prop	R 1 N	M F and O	5
1284	Wellman, Joseph	pt Mill prop	R 1 N	M F and O	5
J1127	Young, Wm	N hf 12 and o p	1	M F and O	1

PART II.—Persons Entitled to Vote at Municipal Elections ONLY.

109	Bateman, Margaret	N hf 12	R 1 N	O	6
123	Bateman, Margaret	W pt N hf 10 and o p	R 1 S	O	6
1237	Bancroft, Joseph	56, 37, 38 Melb	R 1 N	O	5

Polling Sub-Division No. 2.

Other description. P.O.
 F, T & O.. 1
 F and O.. 6
 F and T.. 5
 F and O.. 5
 F and O.. 5
 F and O.. 5
 F and T.. 12
 F and T.. 5
 F and O.. 6
 F and O.. 6
 F and O.. 5
 F and T.. 5
 F and O.. 5
 F and O.. 5
 F and O.. 1
 LY.

No. on Roll.	NAME.	LOT.	Concession or Street.	Other Description.	P.O.
1248	Cady, Elizabeth H.	pt N hf 1	R 1 S	O	5
1243	Conn, Ann	39 Melb	R 1 N	O	5
266	Cooper, Eliza	S hf W hf 2 and o p.	1	O	5
224	Carruthers, Delilah	W hf N W qr 6	R 1 S	O	5
1262	Corneil, John M.	13 to 16 Melb	R 1 N	O	21
1251	Griffith, Mary J	pt N hf 1	R 1 S	O	5
536	Lucas, Alonzo	S cor S hf 11	R 1 N	O	15
1264	Lane, Alfred	sub 25, Melb	R 1 S	O	5
582	Marshman, Catherine	N cor 2	R 1 N	O	5
704	McCracken, Catherine	N pt 9	R 1 N	O	6
1258	McClary, John	8, Melb	R 1 S	O	15
1266	Parr, John	E cor Mill prop	R 1 N	O	5
1271	Robinson, Margaret	25 and 26 Melb	R 1 N	O	5
1275	Robb, David W.	5, pt 6 Melb	R 1 S	O	5
424	Vail, George	pt 1	R 1 N	O	20
1105	Watson, Frances	W hf N hf 12	R 1 S	O	6
1097	Wellman, James	W pt N hf 1	R 1 N	O	5

Polling Sub-Division No. 2.

PART III.—Persons Entitled to Vote at Elections to the Legislative Assembly ONLY.

Jur.	No. on Roll.	NAME.	LOT.	Concession or Street.	Other Description.	P.O.
		493 Hinds, Joseph H.....	S hf 2	R 1 N.....	M F.....	5
		1260 Johnston, Richard....	29 and 30 Melb	R 1 N.....	M F.....	5
		1281 Towers, Lewis.....	pt 1	R 1 N.....	M F.....	5

Com
h

PAR

Jur. No. on Roll
1130
J 24
25
26

92
99
96
J 115
116
117
1139
1196
1137
J1200
1133
J1168
J1134
J 137
169
J 113

Polling Sub-Division No. 3,

Comprising all that portion of the Township lying in the 1st, 2nd, and South half of the 3rd Con. East of the Side Road between Lots 12 and 13.

Polling place at Town Hall, Mt. Brydges.

PART I.—Persons Entitled to Vote at BOTH Municipal Elections and Elections to the Legislative Assembly.

Jur.	No. on Roll.	NAME.	LOT.	Concession or Street.	Other Description.	P.O.
	1130	Abray, George	W Ad st 16	3 Mt Bgs	M F and T	1
J	24	Arnold, James	N hf 18	1	M F and T	1
	25	Arnold, Edward	N hf 18	1	M F & FS	1
	26	Arnold, Walter	N hf 18	1	M F & FS	1
	92	Baneroft, Wm C	3, 4 and 5, E Emer st	3 Mt Bgs	M F and O	1
	99	Baneroft, Wm	pt W hf N hf 20	2	M F and T	1
	96	Brown, Wm	E cor S hf 21	1	M F and O	3
J	115	Borley, Wm E	S hf 18, pt N hf 19	1 and R 1 N	M F and O	1
	116	Borley, E C	S hf 18, pt N hf 19	1 and R 1 N	M F & FS	1
	117	Borley, H D	S hf 18, pt N hf 19	1 and R 1 N	M F & FS	1
	1139	Brownson, Sam C	27 to 31 and o p	2 Mt Bgs	M F and O	1
	1196	Broom, Thomas	313 to 319 and o p	2 Mt Bgs	M F and O	1
	1137	Baker, Thomas	W Ad st, 18	2 Mt Bgs	M F and O	1
J	1200	Bignall, George	blk E, 17 and 18	2 Mt Bgs	M F and O	1
	1133	Bartlett, Henry A	blk C, 1, 17, pt 2	2 Mt Bgs	M F and O	1
J	1168	Betts, John	blk C, 16, pt 15	2 Mt Bgs	M F and O	1
J	1134	Bice, Mark	blk I, 16	2 Mt Bgs	M F and O	1
J	137	Badge, Wm	pt S hf 13 and o p	3	M F and O	1
	169	Bidnall, Wm	pt E hf N hf 16	2	M F and O	1
J	113	Brown, Joseph	E hf S hf 17	1	M F and O	1

Legislative

Other Description. P.O.

F..... 5

F..... 5

F..... 5

Jur.	No. on Roll.	NAME.	LOT.	Concession or Street.	Other Description.	P.O.
	114	Brown, William	E hf S hf 17	1	M F & F S	1
	1138	Black, George	171, 172, pt 107	2	Mt Bgs	M F and O.. 1
J	1132	Badge, Humphrey	blk K, 16 and o p	2	Mt Bgs	M F and O.. 1
	759	Badge, George	pt S hf 18	3		M F and O.. 1
	1131	Bond, John	blk C, 8, 9, 10	2	Mt Bgs	M F and O.. 1
	1140	Burwell, I B	blk C, 7	2	Mt Bgs	M F and T.. 1
J	100	Burch, Wm J	W hf S hf 14	2		M F and O.. 1
	235	Cade, Robert	S pt N $\frac{1}{2}$ 19, pt S $\frac{1}{2}$ 19	1		M F and O.. 1
J	230	Clark, Pearson	pt S hf 21	2		M F and O.. 1
	231	Clark, James P	E pt 22	2		M F and O.. 1
	239	Coy, John	pt N $\frac{1}{2}$ 21 and o p	1	and R 1 N	M F and O.. 1
	240	Coy, Richard A	pt N $\frac{1}{2}$ 21 and o p	1	and R 1 N	M F & F S.. 1
J	236	Cullen, Michael	E pt 16	2		M F and O.. 1
J	234	Cartner, Robert	W hf S hf 19	2		M F and O.. 1
J	275	Cobbald, James R	W hf S hf 17	1		M F and O.. 1
	1146	Crozier, John B	blk H, pt 18 and o p	2	Mt Bgs	M F and O.. 1
	1147	Crozier, Charles	blk H, pt 18 and o p	2	Mt Bgs	M F and O.. 1
	276	Cobbald, James	W hf S hf 17	1		M F and O.. 1
	1141	Caslick, Robert	W Ad st 15, Pr st 15	2	Mt Bgs	M F and O.. 1
	1142	Cullen, John	E Ad st 9 to 14	2	Mt Bgs	M F and O.. 1
	1143	Clark, John	blk E, pt 1 & 2, & o p	2	Mt Bgs	M F and O.. 1
J	229	Corcoran, Dennis	pt N hf 21 and 22	1		M F and T.. 1
J	227	Coates, Furlow	W hf S hf 19	3		M F and O.. 1
J	1145	Clarke, Edward	blk B, 3 pt 2	2	Mt Bgs	M F and T.. 1
J	250	Crozier, Geo B	W hf N hf 13	1		M F and O.. 1
J	218	Chamberlain, Wm	S hf 23	3		M F and O.. 1
J	220	Craven, John A	W hf S hf 22	3		M F and T.. 10

Jur. N
F
J 23
31
J 31
1150
1151
J 467
1152
1153
1155
1160
1156
1159
356
J 416
J 1172
1164
J 419
1169
1170
1171
478 H
1173 H
1178 H

Jur.	No. on Roll.	NAME.	LOT.	Concession or Street.	Other Description.	P.O.
J	479	Heath, Franeis	een pt 21	1	M F and O..	1
	1175	Hadden, Jos sr	E pt N hf 18	2	M F and O..	1
J	1176	Hadden, Jos jr	E pt N hf 18	2	M F and O..	1
	1083	Hartley, George	pt E hf 22	2	M F and O..	1
	1174	Humphreys, Alex	175, 176, 177, 178	2 Mt Bgs	M F and O..	1
J	482	Hoover, Joseph E	N hf 16	1	M F and O..	1
	468	Hoover, Benj C	E hf N hf 13	1	M F and T..	1
J	511	Innes, Hugh	E hf 22	1	M F and O..	3
	1179	Kellestine, Andrew sr	1 to 6 and 63 to 75	2 Mt Bgs	M F and O..	1
	1180	Kellestine, Andrew jr	1 to 6 and 63 to 75	2 Mt Bgs	M F and O..	1
	1183	Kellook, Andrew	blk E, 12	2 Mt Bgs	M F and O..	1
	1182	Kerr, George J	100 and 101	2 Mt Bgs	M F and T..	1
J	1189	Lloyd, Fergus	pt N hf 18 and o p	2	M F and O..	1
	558	Lipsit, Jasper	N eor N hf 16	2	M F and O..	1
J	725	Lowthian, George	S hf 14	1	M F and O..	6
	1192	Lee, Elijah	181, 182, 183, 184	2 Mt Bgs	M F and O..	1
J	1190	London, Franklin F	206 to 212 and o p	2 Mt Bgs	M F and O..	1
	1186	Lipsit, Bannon	blk B, 1, pt 2	2 Mt Bgs	M F and O..	1
	1089	Lewis, Eugene	N cor 24	2	M F and O..	1
J	559	Lipsit, Levi	E hf S hf 19	3	M F and O..	1
	1191	Lipsit, Charles	155, 156, 157	2 Mt Bgs	M F and T..	1
	546	Lindsay, Geo H	S hf 16	3	M F and O..	1
	1191	Lidgett, Chas	205	2 Mt Bgs	M F and T..	1
	1188	Lipsitt, Geo A	E Ad st 3	2 Mt Bgs	M F and T..	1

Jur. N
J 58
119
J119
58
119
120
69
69
693
J 185
J 732
J 735
1204
752
J 753
1206
J1177
1207
1208
J 994
J 852
417

Polling Sub-Division No. 3.

Other Description.	P.O.	Jur.	No. on Roll.	NAME.	LOT.	Concession or Street.	Other Description.	P.O.
M F and O..	1	J	581	Monteith, Wm	W hf 23	2	M F and O..	1
M F and O..	1		1195	Malcolm, Wallace	E Ad st, 15 and 16 & o p	3	Mt Bgs	M F and O.. 1
M F and O..	1	J	1194	Mines, James	W pt S hf 17 and o p	3	M F and O..	1
M F and O..	1		584	Marsh, William	pt 17 and 18	1	M F and T..	1
M F and O..	1		1197	Mitchell, Neil	313 to 319 and o p	2	Mt Bgs	M F and T.. 1
M F and O..	1		1203	Misner, Andrew	blk C, 18	2	Mt Bgs	M F and T.. 1
M F and T..	1		690	McCallum, Chas	N hf 13	2	M F and O..	1
M F and O..	3		691	McCallum, Justus	N hf 13	2	M F & F.S.	1
M F and O..	1	J	693	McMullen, George	W hf N hf 20	1	M F and O..	1
M F and O..	1	J	185	McGugan, Malcolm	pt 17 and 18	2	M F and O..	1
M F and O..	1	J	732	Nagle, Henry	N hf 14	2	M F and O..	1
M F and O..	1	J	735	Nagle, Wm	W hf S hf 15 and o p	1	M F and O..	1
M F and T..	1		1204	Northcott, Ed H	55, 56 and o p	2	Mt Bgs	M F and O.. 1
M F and O..	1		752	Owens, Thos	N W qr N hf 16	2	M F and O..	1
M F and O..	1	J	753	Obrine, John	E hf S hf 15	2	M F and O..	1
M F and O..	6		1206	Osborne, James A	pt 18	2	M F and T..	1
M F and O..	1	J	1177	Pearce, Thomas	blk H, 1, 2 and o p	2	Mt Bgs	M F and O.. 1
M F and O..	1		1207	Porter, William	132 to 146 and o p	2	Mt Bgs	M F and T.. 1
M F and O..	1		1208	Porter, James	119, 120, 121	2	Mt Bgs	M F and O.. 1
M F and T..	1	J	994	Root, John	N pt 23	2	M F and T..	1
M F and T..	1	J	852	Ramsay, Peter	W hf N hf 17	1	M F and O..	1
M F and T..	1		417	Robinson, Thomas	S hf 13	1	M F and O..	6

Polling Sub-Division No. 3.

Jur.	No. on Roll.	NAME.	LOT.	Concession or Street.	Other Description.	P. O.
J	418	Robinson, Jos.	S hf 13	1	M F and O.	6
	1211	Robertson, Wm C	blk I, 13, 14, 15	2	Mt Bgs	M F and O.
J	853	Runnalls, Rich	N hf 14	1	M F and O.	1
	1214	Ringrose, Chas	blk H, 17	2	Mt Bgs	M F and T.
	937	Stover, Jacob	W hf S hf 13	2	M F and O.	1
	936	Smith, Francis sr	E hf S hf 13	2	M F and O.	1
	1217	Simpson, George	blk E, 15 and 16	2	Mt Bgs	M F and O.
	1216	Small, David	E pt N hf 18 and o p	2	M F and O.	1
	945	Steer, Robert	S hf 13	3	M F & F S.	1
J	935	Stratton, Alfred H.	E hf S hf 14	2	M F and O.	1
J	1218	Simpson, John W	blk D, 1 and o p	2	Mt Bgs	M F and O.
J	940	Steer, Richard	W hf S hf 14	3	M F and O.	1
J	939	Sutherland, Robt	S hf 15	3	M F and O.	1
	934	Steer, John	E hf N hf 17	1	M F and T.	1
	1201	Sinclair, Albert	blk C, 17	2	Mt Bgs	M F and T.
	1202	Sinclair, Edward	blk C, 17	2	Mt Bgs	M F and T.
J	995	Tilden, Geo B.	S pt 23	2	M F and O.	1
J	992	Tilden, Chas N D	N pt 23	2	M F and O.	1
	1224	Torrance, James W	pt S hf 18	3	M F and T.	1
	993	Tilden, Chas M	N pt 23	2	M F & F S.	1
J	991	Thomas, David	S hf 21	3	M F and O.	1
J	996	Thomas, W A.	S pt N hf 21	2	M F and O.	1
	1219	Thomas, Wm	131 to 145	2	Mt Bgs	M F and O.
	1019	Tull, Robt M	S hf 16 and o p	1	M F & F S.	1
J	998	Tull, Rich S.	N hf 15	1	M F and O.	1

Polling Sub-Division No. 3.

Other Description.	P.O.	Jur. No. on Roll.	NAME.	LOT.	Concession or Street.	Other Description.	P.O.
M F and O..	6	J 997	Toles, Francis.....	pt N hf 19	1	M F and O..	1
M F and O..		J1220	Taggart, Thos.....	167 and o p.....	2 Mt Bgs	M F and O..	1
M F and O..	1	J 990	Thomas, Albert E	W hf N hf 20.....	2	M F and O..	1
M F and T..	1	1020	Tull, Thomas H	S hf 13 and o p.....	1	M F & F S..	1
M F and O..	1	1002	Trott, Wm A	108 and o p..	2 Mt Bgs	M F and O..	1
M F and O..	1	1222	Trott, John.....	blk G, 18.....	2 Mt Bgs	M F and T..	1
M F and O..	1	J1031	Vrooman, Nelson	W hf S hf 15	2	M F and O..	1
M F and O..	1	1225	Veale, Richard	168	2 Mt Bgs	M F and T..	1
M F & F S..	1	1227	Wadsworth, Thos	pk 3, 5, 6 and o p.....	3	M F and O..	1
M F and O..	1	1228	Wadsworth, Geo	pk 3, 5, 6 and o p.....	3	M F and T..	1
M F and O..	1	J1081	Waters, Francis.....	pt N hf 22 and o p.....	2	M F and O..	1
M F and O..	1	J1082	Weekes, James	23 and 24	1	M F and O..	1
M F and T..	1	J1093	Waters, Edward.....	pt S hf 21	2	M F and T..	1
M F and T..	1	J1094	Waters, Stephen.....	pt S hf 21.	2	M F and T..	1
M F and T..	1	J1098	Williams, Rich A	E hf S hf 15.....	1	M F and O..	6
M F and O..	1	J1084	Wilson, Joseph	W pt S hf 22	2	M F and O..	1
M F and O..	1	J1075	Weekes, Thos	S hf 20.....	3	M F and O..	1
M F and O..	1	1095	Walker, George.....	E hf S hf 19.....	2	M F and O..	1
M F and O..	1	J1096	Walker, Alfred F	E hf S hf 19	2	M F and O..	1
M F and T..	1	1091	Waters, Cornelius	E hf N hf 20	1	M F and O..	1
M F & F S..	1	J1085	Waters, Arthur	W hf 22	1	M F and O..	3
M F and O..	1	1233	Wilkinson, James	179, 180	2 Mt Bgs	M F and O..	1
M F and O..	1	1231	Wootton, Richard	blk F, 18 and o p.....	2 Mt Bgs	M F and O..	1
M F and O..	1	1230	West, Thomas.....	blk F, pt 1, 2, 3.....	2 Mt Bgs	M F and O..	1
M F & F S..	1	1071	Walker, Christmas....	E cor S hf 24.....	3	M F and O..	1
M F and O..	1	J1087	Walker, William	pt S hf 24.....	3	M F and O..	1

Jur.	No. on Roll.	NAME.	LOT.	Concession or Street.	Other Description.	P.O.
	1088	Walker, John H.	pt S hf 24.	3	M F and O.	1
	1232	Waters, Wm	163 and 164.	2 Mt Bgs	M F and O.	1

PART II.—Persons Entitled to Vote at Municipal Elections ONLY.

	1199	Bishop, David	blk H, 1, 2, & 3, pt 18.	2 Mt Bgs	O	2
	1144	Clay, Henry	blk B, 3 pt 2	2 Mt Bgs	O	15
	228	Corcoran, Eliza	pt N hf 21, 22.	1	O	1
	23	Curry, John	N hf 18.	1	O	16
	1149	Crooks, Margaret	23, 24 and o p	2 Mt Bgs	O	1
	1129	Davidson, Thomas	W Ad st 16.	3	O	1
	1162	Fisher, Keziah	E Ad st 7 and o p	3	O	1
	1161	Francis, Chas B.	N hf 15.	2	O	1
	1158	Fisher, Lucinda	blk A, 1	2 Mt Bgs	O	1
	1163	Gibson, Hannah	W Ad st, 10 to 14 & o p	3 Mt Bgs	O	1
	1166	Gustin, Sarah J	pt S hf 17	2	O	1
	1154	Graves, John	blk B 18	2 Mt Bgs	O	28
	1221	Hadden, Wm	blk G 18.	2 Mt Bgs	O	16
	1185	Kinch, Robert	W pt N hf 17	2	O	29
	1213	Kennedy, Angus	blk H 17.	2 Mt Bgs	O	15

Polling Sub-Division No. 3.

Jur.	No. on Roll.	NAME.	LOT.	Concession or Street.	Other Description.	P.O.
	1187	Lipsit, Jane	E Ad st 17	3	O	1
	1198	Mills, Chas J	blk I 1	2	Mt Bgs O	15
	219	Murdock, Wm	W hf S hf 22	3	O	2
	734	Neville, Pamela	S hf 17	2	O	1
	1157	Nicholson, Henry	pt N hf 17 and o p	2	O	2
	1092	Ollett, William	pt S hf 21	2	O	1
	944	Steer, Emily	S hf 13	3	O	1
	1215	Sutherland, Annie	blk C, pt 1 and 2	2	Mt Bgs O	1
	1018	Tull, Mary J	S hf 16	1	O	1
	1101	Webb, Arabella	pt S hf 20	1	O	1

PART III. - Persons Entitled to Vote at Elections to the Legislative Assembly ONLY.

	1135	Bancroft, John	pt 18	2	M F	1
	1148	Cobban, John	blk A 1	2	Mt Bgs M F	1

Polling Sub-Division No. 3.

Jur.	No. on Roll.	NAME.	LOT.	Concession or Street.	Other Description.	P.O
	1167	George, Ed N.	G T R Agent.	2 Mt Bgs	M F.	1
	480	Heath, Thomas	N hf N hf 21	2	M F.	1
	481	Henry, John	S hf 17	2	M F.	1
	1209	Peaker, Charles	blk H 1 & 2	2 Mt Bgs	M F.	1
	1210	Peaker, Alfred.	bik H 1 & 2	2 Mt Bgs	M F.	1
	1212	Robertson, Geo A	blk I 13, 14.	2 Mt Bgs	M F.	1
	1226	Vrooman, James	blk B 6.	2 Mt Bgs	M F.	2
	1086	Waters, John	W hf 22	1	M F.	1
	1229	Walker, Wm	blk G 1 and 2.	2 Mt Bgs	M F.	1

Comp
and

PART

Jur. No. o
Roll
J 9
21
22

J 58
J 59
J 74
J 60
J 82
83
89
J 90
J 105
75
92
J 104
102
103

Other Description. P.O
M F..... 1
M F..... 1
M F..... 1
M F..... 1
M F..... 1
M F..... 1
M F..... 1
M F..... 1
M F..... 1
M F..... 1

Polling Sub-Division No. 4,

Comprising all that portion of the Township lying in the 2nd, 3rd, 4th, 5th and 6th Concessions West of the Side Road between Lots 12 and 13.

Polling place at School House, School Section No. 12.

PART I.—Persons Entitled to Vote at BOTH Municipal Elections and Elections to the Legislative Assembly.

Jur.	No. on Roll.	NAME.	LOT.	Concession or Street.	Other Description.	P.O
J	9	Anstey, Rupert	N hf 3	5	M F and T.	7
	21	Augerman, John	S hf 6	3	M F and O.	12
	22	Augerman, Chas.	S hf 6	3	M F & F S.	12
J	58	Blair, Wm	N hf 9	6	M F and T.	2
J	59	Blair, Geo D.	N hf 9	6	M F and T.	2
J	74	Bairns, Thos.	N hf 4	6	M F and O.	7
J	60	Ballantine, Geo	N hf 10	5	M F and O.	2
J	82	Brown, Edmund	N hf 7	3	M F and T.	12
	83	Brown, Lionel	N hf 7	3	M F & F S.	12
	89	Bowley, Henry	W hf S hf 10	3	M F and O.	1
J	90	Branton, Alfred	E hf S hf 4	3	M F and O.	12
J	105	Bateman, Chas E	S hf 4	2	M F and O.	12
	75	Bolton, Hugh	W cor N hf 1	6	M F and T.	13
	92	Bass, Albert	N hf 2	3	M F and T.	12
J	104	Bateman, Samuel	W hf S hf 5	2	M F and O.	12
	102	Beattie, James	S hf 6, pt N hf 6	2	M F and O.	12
	103	Beattie, Patten	S hf 6, pt N hf 6	2	M F and O.	12

Polling Sub-Division No. 4.

Jur.	No. on Roll.	NAME.	LOT.	Concession or Street.	Other Description.	P.O.
J	91	Bolton, Richard	W hf S hf 4	3	M F and O	12
J	101	Beattie, Jas J	W pt S hf 10	2	M F and O	1
J	190	Connor, James	N hf 5	4	M F and O	7
J	200	Campbell, Dugald	N hf 12	5	M F and O	2
J	226	Coleman, James	E cor N hf 12 and o p	2	M F and T	1
J	221	Cushman, James	E hf S hf 3	3	M F and O	12
	222	Cushman, Hiram	E hf S hf 3	3	M F & F S	12
J	238	Carruthers, John	E hf S hf 9	2	M F and O	1
J	216	Cobban, Daniel	S hf 3, W hf S hf 5	4	M F and O	12
J	215	Cobban, James	N hf 3	4	M F and O	7
J	265	Cawthrope, Ernest	S hf 2	2	M F and O	12
J	237	Clark, James	S E pt 10	2	M F and O	1
J	223	Case, Peter	W hf S hf 3	3	M F and O	12
J	309	Dillon, John	N hf 1	3	M F and O	12
J	310	Dillon, Thomas	N hf 1	3	M F and O	12
	335	Ferguson, Samuel	E pt N hf 11	6	M F and O	2
J	336	Ferguson, John	E pt N hf 11	6	M F and T	2
J	339	Fisher, John	S hf 8, W hf N hf 8	6	M F and O	7
J	340	Fisher, Benjamin	N W pt 8	5	M F and O	7
J	344	Farrow, Wm	W hf 9 and o p	5	M F and T	2
J	350	Francis, Robt H	W hf S hf 11	3	M F and O	1
J	343	Farrow, Isaac	E hf N hf 9	4	M F and O	2
J	345	Farrow, John	W hf N hf 9	4	M F and O	2

Polling Sub-Division No. 4.

Other Description. P.O.
M F and O .12
M F and O.. 1
M F and O.. 7
M F and O.. 2
M F and T.. 1
M F and O..12
M F & F.S. 12
M F and O.. 1
M F and O..12
M F and O.. 7
M F and O..12
M F and O.. 1
F and O..12
F and O..12
F and O.. 2
F and T.. 2
F and O.. 7
F and O.. 7
F and T.. 2
F and O.. 1
F and O.. 2
F and O.. 2

Jur.	No. on Roll.	NAME.	LOT.	Concession or Street.	Other Description.	P.O.
J	385	Grigg, John P.	N hf 11	4	M F and O..	1
	412	Grigg, Wm	pt N hf 12 and o p	2	M F and O..	1
	415	Grigg, Elias G.	pt N hf 12 and o p	2	M F & F.S.	1
J	413	Grigg, Wm H.	E hf S hf 11	3	M F and O..	1
J	405	Graves, Hanson	N hf 6	3	M F and T..	12
	414	Grigg, Arthur.	pt N hf 12 and o p	2	M F & F.S.	1
J	411	Grigg, Frank	N pt N hf 10	2	M F and O..	1
J	451	Howe, Thomas	S hf 1	6	M F and O..	7
J	453	Hixon, Levi J.	S hf 6, S hf 4	5 and 6	M F and O..	7
J	454	Hixon, Francis G	S hf 6, S hf 4	5 and 6	M F and T..	7
J	455	Hixon, Edward J	S hf 6, S hf 4	5 and 6	M F and T..	7
J	456	Hixon, Wilbur H	S hf 6, S hf 4	5 and 6	M F and T..	7
J	457	Howe, George	N hf 5, W hf N hf 5	5 and 6	M F and O..	7
J	442	Hutton, Alex B	W hf S hf 9, E hf N hf 8	6	M F and O..	2
	443	Hutton, John W.	W hf S hf 9, E hf N hf 8	6	M F & F.S.	2
J	452	Hutton, Jas L.	E hf S hf 9, pt 10	5	M F and O..	2
J	462	Hardy, Henry	S hf 7	5	M F and O..	2
J	465	Hixon, John	E hf S hf 5	5	M F and O..	7
J	471	Harrison, Willoby	S hf 6	4	M F and O..	12
J	473	Hucheson, John	pt W hf N hf 8, pt 1	3 and 4	M F and O..	1
J	464	Hucheson, Geo	E hf N hf 1, pt 6	4	M F and O..	7
	472	Harrison, Wesley A	S hf 6	4	M F & F.S.	12
J	470	Helmer, Daniel H	E hf S hf 5	4	M F and T..	12
J	509	Inches, George	N hf 5	3	M F and O..	12
	510	Inches, Wm G.	N hf 5	3	M F & F.S.	12
J	505	Inches, John	W hf S hf 10	4	M F and O..	1

Polling Sub-Division No. 4.

Jur.	No. on Roll.	NAME.	LOT.	Concession or Street.	Other Description.	P.O.
J	506	Inches, Thomas	E hf S hf 10, pt 11	4	M F and O.	1
	507	Inches, James	E hf S hf 10, pt 11	4	M F & F S.	1
	524	Kellestine, Warren	W hf N hf 2	4	M F and O.	12
	528	Kellestine, Geo sr	15 Mid	2	M F and O.	12
	529	Kellestine, Geo jr	16 Mid	2	M F and O.	12
J	555	Langford, Jas A	een pt S hf 10	5	M F and T.	2
J	557	Long, Griffith	E hf S hf 9	6	M F and T.	2
J	643	McArthur, Donald	N hf 10	6	M F and O.	2
	668	McDongall, Dunc'n sr	S hf 10, S hf 11	6	M F and O.	2
	669	McDongall, Arch	S hf 10, S hf 11	6	M F & F S.	2
	670	McDongall, Dunc'n jr	S hf 10, S hf 11	6	M F & F S.	2
	671	McDongall, Donald	S hf 10, S hf 11	6	M F & F S.	2
J	665	McDongall, Arch	W hf S hf 12	6	M F and T.	2
J	673	McLean, Chas	N hf 11	5	M F and T.	2
J	674	McLean, John	N hf 11	5	M F and T.	2
J	663	McLean, Hector	S hf 12	5	M F and O.	1
J	666	McDongall, Peter	E hf S hf 12	6	M F and O.	2
J	683	McPhail, Arch	N hf 10	4	M F and O.	2
	684	McPhail, Arch J	N hf 10	4	M F & F S.	2
	687	McGregor, Jas sr	S hf 7 and o p	3	M F and O.	12
	688	McGregor, Thomas	S hf 7 and o p	3	M F & F S.	12
	689	McGregor, Lorn F	S hf 7 and o p	3	M F & F S.	12
J	698	McCracken, James	E hf S hf 5 and o p	2	M F and O.	12
	699	McCracken, John A	E hf S hf 5 and o p	2	M F & F S.	12

Polling Sub-Division No. 4.

Jur.	No. on Roll.	NAME.	LOT.	Concession or Street.	Other Description.	P.O.
	694	McMullen, Thomas	8	2	M F and O..	1
J	695	McMullen, Thos J.	8	2	M F and O..	1
J	692	McCracken, Ambrose.	W hf S hf 9	2	M F and O..	1
J	731	Nichols, Daniel	6 and 7, Middleton	2	M F and O..	12
	1125	Oaks, Samuel sr.	pt N hf 12	6	M F and O..	2
J	781	Pettit, Francis	W hf N hf 3	6	M F and O..	7
J	789	Pettit, Levi	pt N hf 2 & 3, W hf S hf 4.6 and 7		M F, & O T..	7
J	790	Pettit, Henry	pt N hf 2 & 3, W hf S hf 4.6 and 7		M F & O T.	7
J	799	Pierce, Francis	E hf S hf 8.	5	M F and O..	2
J	801	Pierce, Benjamin	pt S hf 8	5	M F and T..	7
J	803	Pettit, Martin	E hf S hf 3.	5	M F and O..	7
J	792	Pierce, Robt	pt N hf 1.	5	M F and O..	7
J	793	Phillips, James	pt 2	6	M F and O..	7
J	795	Paisley, Wm	W hf S hf 3, S hf S hf 5.6		M F and O..	7
J	796	Paisley, Samuel	W hf S hf 3.	6	M F and O..	7
J	894	Pullen, Noah	E hf N hf 6.	5	M F and O..	7
J	797	Pullen, Joseph	S hf 7, pt 6	6	M F and O..	7
J	794	Pullen, John	N hf S hf 5.	6	M F and O..	7
J	802	Pierce, Thomas	W hf S hf 5, S hf S hf 4.5		M F and O..	7
J	812	Philips, James	1.	2	M F and O..	12
J	813	Philips, Walter	1.	2	M F and O..	12
J	814	Philips, Albert	1.	2	M F and O..	12
	807	Patrick, Wm	E pt N hf 8.	3	M F & F S..	1
J	805	Pullman, Samuel	E hf S hf 2.	5	M F and T..	7
J	922	Pierce, Uri	W hf S hf 8	4	M F and O..	1

Polling Sub-Division No. 4.

Jur.	No. on Roll.	NAME.	LOT.	Concession or Street.	Other Description.	P.O.
	833	Ramey, James	E hf N hf 2	5	M F and O..	7
J	834	Ramey, Joseph	E hf N hf 2	5	M F and O..	7
J	842	Ramey, Thos G	W hf S hf 2	5	M F and O..	7
J	832	Ramey, Wm	W hf N hf 2	5	M F and O..	7
J	835	Richardson, John	E hf Shf 11	5	M F and O..	2
	836	Rice, James	E pt S hf 3	5	M F and O..	2
	837	Rice, Frederick	E pt S hf 3	5	M F and O..	7
J	844	Ramsey, George	N hf 10	3	M F and O..	1
	845	Ramsey, Geo D	N hf 10	3	M F & F.S.	1
	849	Robinson, John	S hf 5	3	M F and O..	12
J	851	Rae, Alexander	N pt 3 and o p	2	M F and O..	12
J	850	Robinson, Geo W	S hf 5	3	M F and T..	12
J	890	Stephenson, Alfred	E hf N hf 4 and o p	5 and 6	M F and O..	7
J	889	Stephenson, Robert	W hf N hf 4 and o p	5 and 6	M F and O..	7
J	904	Sutherland, George	pt N hf 8	4	M F and O..	6
J	905	Sutherland, John	E hf N hf 7, pt 1	4	M F and O..	2
J	907	Stuart, John	W hf N hf 6	4	M F and O..	7
J	908	Sutherland, Isaac	W hf S hf 7	4	M F and O..	1
J	909	Sutherland, Thos	E hf S hf 7	4	M F and O..	1
J	923	Sutherland, Henry	W hf S hf 8	4	M F and O..	1
	921	Simmons, Wm T	E hf S hf 4	4	M F & F.S.	12
J	874	Sutherland, Wm	E hf S hf 8	4	M F and O..	1
J	910	Sutherland, Alex	S hf 9, pt 8	4	M F and O..	1
J	919	Sutherland, James I	N hf 9 and o p	3	M F and O..	1
J	906	Sutherland, Chas	W hf N hf 7 and o p	4 and 3	M F and O..	1
	911	Scott, Wm	N hf 12	3	M F and O..	1
J	912	Scott, Robert	N hf 12	3	M F and T..	1

No. on Roll.
 J 942
 J 943
 J 932
 J 933
 J 947
 J 966
 J 913
 J 893
 J 984 T
 J 985 T
 J 988 T
 989 T
 999 T
 951 T
 1011 T
 J1000 T
 1001 T
 1079 W
 1043 W
 J1046 W
 J1126 W
 1072 W
 J1047 W
 J1073 W
 J1045 W
 1076 W

Polling Sub-Division No. 4.

Other Description. P.O
 F and O.. 7
 F and O.. 7
 F and O.. 7
 F and O.. 7
 F and O.. 2
 F and O.. 2
 F and O.. 7
 F and O.. 1
 F & F S.. 1
 F and O.. 12
 F and O.. 12
 F and T.. 12
 F and O.. 7
 F and O.. 7
 F and O.. 6
 F and O.. 2
 F and O.. 7
 F and O.. 1
 F and O.. 1
 F and O.. 1
 F & F S.. 12
 F and O.. 1
 F and O.. 1
 F and O.. 1
 F and O.. 1
 F and O.. 1
 F and T.. 1

No. on Roll.	NAME.	LOT.	Concession or Street.	Other Description.	P.O
J 942	Steer, Frank	S hf 12	3	M F & F S..	1
J 943	Steer, Walter	S hf 12	3	M F & F S..	1
J 932	Stuart, Stephen	W hf S hf 2	3	M F and O..	12
J 933	Stockings, Chris	N pt N hf 2	2	M F and O..	12
J 947	Seaburn, John W	S hf 3	2	M F and O..	12
J 966	Simmons, Moses	S hf 7	2	M F and O..	12
J 913	Scott, Alexander	E hf S hf 11	4	M F and O..	1
J 893	Smale, Henry	W qr S hf 6 and o p	6	M F and O..	7
J 984	Toal, Wm	N hf 7	5	M F and O..	7
J 985	Toal, David J	N hf 7	5	M F & F S..	7
J 988	Trott, Wm	N hf 9	2	M F and O..	1
989	Trott, James S	S hf 9	3	M F and O..	1
999	Thompson, John	W pt S pt 11	2	M F and O..	1
951	Thompson, Francis	W pt S pt 11	2	M F & F S..	1
1011	Thornton, Frederick	N cor N hf 12	6	M F and O..	2
J1000	Thompson, John H	E pt S hf 11	2	M F and O..	1
1001	Thompson, Francis	pt S hf 11 and 12	2	M F and O..	1
1079	Westbrook, Leonard	blk I, Middleton 1	2	M F and O..	12
1043	Wakem, John	E hf N hf 3	6	M F and O..	7
J1046	Whittaker, Joseph	W hf S hf 6	6	M F and O..	7
J1126	Watson, Walter W	E hf N hf 9, N hf 12	.5 and 6	M F, T & O..	2
1072	White, James	N pt N hf 6	2	M F and O..	12
J1047	Welch, David	W hf N hf 6	5	M F and T..	7
J1073	White, Robert	N pt N hf 6	2	M F and T..	12
J1045	Wakem, Thos	N hf 6	6	M F and O..	7
1076	Windall, James	W qr S hf 1	3	M F and O..	12

Jur.	No. on Roll.	NAME.	LOT.	Concession or Street.	Other Description.	P.O.
J1040		Webb, Richard	E pt N hf 11	6	M F and O.	2
J1062		Wilcock, Thos A.	N hf 11	3	M F and T.	1
PART II.—Persons Entitled to Vote at Municipal Elections ONLY.						
		8 Anstey, John	N hf 3	5	O	
556		Addison, Wm.	E hf S hf 9.	6	O	23
		57 Blair, Elizabeth	N hf 9, pt 10	6 and 7	O	2
		93 Berdan, John	E pt S hf 1.	3	O	2
		225 Campbell, Wm J.	E cor N hf 12.	2	O	2
		463 Hutcheson, Margaret	E hf N hf 6.	4	O	7
		469 Harrison, Elizabeth	E hf S hf 5.	4	O	12
		450 Howe, Joseph	N hf 1	6	O	13
		579 Moore, Martha	.1 to 9, H st, Midd.	2	O	12
		672 McLean, Nancy	N hf 11.	5	O	2
		664 McDougall, Jane	W hf S hf 12	6	O	2
		661 McKee, James	S hf 1	5	O	12
		662 McKee, John D.	S hf 2	4	T	12
		404 McEwen, Robt	N hf 6	3	O	17
		806 Patrick, Jane	E pt N hf 8	3	O	12
		791 Patterson, Thos	N W cor N hf 1.	5	O	7
		300 Pierce, Mary	pt S hf 8	5	O	7

Jur.	No. on Roll.
	804 R
	841 R
	920 S
	941 S
	1058 W
	1061 W
	P
	94 B
	95 E
	351 F
	403 G
	527 K
	580 M
	811 P
	843 F
	846 F

Jur.	No. on Roll.	NAME.	LOT.	Concession or Street.	Other Description.	P.O.
	804	Rice, Catherine	E hf S hf 2	5	O	2
	841	Raymond, James	N hf 12	4	O	2
	920	Simmons, Amelia	E hf S hf 4	4	O	12
	941	Steer, Sarah	S hf 12	3	O	1
	1058	Welch, Lyman	pt S hf 10 and 11	5	O	2
	1061	Wilcock, Jessie E	N hf 11	3	O	1

PART III.--Persons Entitled to Vote at Elections to the Legislative Assembly ONLY.

	94	Begg, Richard	13 Midd	2	M F	12
	95	Birrell, Henry	N hf 1	2	M F	12
	351	Franklin, William	S hf 7	2	M F	12
	403	Glennie, George	pt W hf S hf 3	5	M F	7
	527	Kellestine, John	N hf 2	3	M F	12
	580	Meacock, Frederick	N hf 12	2	M F	1
	811	Pierce, David	S hf 4	2	M F	12
	843	Reynolds, Wm	N hf 8	3	M F	1
	846	Raymond, Chas	N hf 11	3	M F	2

Jur.	No. on Roll.	NAME.	LOT.	Concession or Street.	Other Description.	P.O.
	1078	White, James	N hf 1	2	M F	12
	1077	Wrightman, Jas H	N hf 2	2	M F	12
	1074	Winter, Joseph	E pt S hf 1	3	M F	12
	1080	Wrightman, Hamilton	N hf 1	2	M F	12

Co

PA

Jur. N

J 1

J 2

J 3

J 4

4

J 5

J 6

J 7

J 8

J 9

J 10

5

J 5

J 6

J 3

J 7

Polling Sub-Division No. 5,

Comprising all that portion of the Township lying in the North half of the 6th and the 7th, 8th, 9th and 10th Concessions East of the Side Road between Lots 12 and 13.

Polling place at School House, School Section No. 7.

PART I.—Persons Entitled to Vote at BOTH Municipal Elections and Elections to the Legislative Assembly.

Jur	No. on Roll.	NAME.	LOT.	Concession or Street.	Other Description.	P.O
J	28	Buttery, John	S W pt S hf 13	9	M F and O..	2
J	34	Bond, Frederick	W hf 17	10	M F and O..	2
J	35	Bond, Samuel	N hf 16	9	M F and O..	2
J	39	Brooks, Hugh	S hf 21, S hf 22	10	M F and O..	2
	49	Ball, Thos sr	pt S hf 20	9	M F and O..	2
J	36	Ball, Robt T	E hf N hf 21	10	M F and O..	2
	50	Bell, Richard	pt S hf 20, S hf 20	7 and 8	M F and O	2
J	52	Bell, James S	pt S hf 20, S hf 20	7 and 8	M F and T..	2
J	51	Bell, Robt W	pt S hf 20, S hf 20	7 and 8	M F and T	2
J	53	Bell, Matthew F	pt S hf 20, S hf 20	7 and 8	M F and T..	2
J	54	Brown, Wm	E hf N hf 13 and o p	7 and 8	M F and O..	2
	55	Brown, Geo. W	E hf N hf 13 and o p	7 and 8	M F & F S..	2
J	56	Brown, Henry S	W hf N hf 13 and o p	7	M F and O..	2
J	66	Branton, Thos	E hf N hf 14, pt S hf 20	6 and 7	M F and O..	2
J	38	Branton, Wm	N hf 24	10	M F and T..	2
J	77	Baxter, Thomas	pt W hf N hf 18	6	M F and O..	1

Jur.	No. on Roll.	NAME.	LOT.	Concession or Street.	Other Description.	P. 2.
J	143	Campbell, Malcolm	pt 17, N hf 16	9 and 10	M F and O.	2
J	142	Campbell, Chas	S hf 16	10	M F and O.	2
J	144	Campbell, Mal M	W hf 23	10	M F and O.	2
	145	Campbell, Arch J	W hf 23	10	M F & F S.	2
	146	Campbell, Peter T.	W hf 23	10	M F & F S.	2
	147	Campbell, Donald	19	10	M F and O.	2
	148	Campbell, John K.	19	10	M F & F S.	2
	149	Campbell, Alex K.	19	10	M F & F S.	2
	150	Campbell, Alex C	E hf 18	10	M F and O.	2
	151	Campbell, John C	E hf 18	10	M F & F S.	2
	167	Collins Thos	pt W hf N hf 13 and o p. 8 and 9		M F and O.	2
J	166	Collins, Wm A	pt S hf 13 and 14	9	M F and T.	2
J	155	Crawford, Arch	S hf 19	9	M F and O.	2
J	176	Campbell, Arch	21 and o p	8 and 9	M F and O.	2
J	177	Crawford, Duncan	S hf 17	8	M F and O.	2
	152	Campbell, Oliver W	E hf 18	10	M F & F S.	2
J	187	Campbell, Arch M	N hf 24	6	M F and O.	11
J	188	Campbell, Alex	W hf N hf 21	6	M F and O.	2
J	186	Campbell, Malcolm	S hf 23	7	M F and T.	2
J	163	Collins, Jas G	E hf W hf S hf 14	8	M F and O.	2
J	168	Collins, Thos S	S hf N hf S hf 13 and 14	9	M F and O.	2
J	299	Degraw, John G	pt S hf 16	9	M F and O.	2
	305	Dolphin, Alex	S E cor S hf 20	9	M F and O.	2
J	304	Dolphin, James	N hf 23	8	M F and T.	2
J	300	Degraw, Cornelius	pt S hf 15 and 16	9	M F and O.	2
	301	Degraw, Duncan	pt S hf 15 and 16	9	M F & F S.	2

Jur.	No. on Roll.	NAME.	LOT.	Concession or Street.	Other Description.	P.O.
J	322	Elworthy, Richard	N hf 23, N hf 24	9	M F and O	2
J	317	Erskine, Thomas	N hf N hf 16	6	M F and O	2
J	320	Elliott, George A	N hf N hf S $\frac{1}{2}$ 13 & 14	9	M F and T	2
	321	Elliott, Wm G	N hf N hf S $\frac{1}{2}$ 13 & 14	9	M F & F S	2
J	332	Ford, James	E hf 18	9	M F and T	2
J	375	Graham, Donald G	E hf 23, S hf 24	10	M F and O	11
	376	Graham, Donald A	E hf 23, S hf 24	10	M F & F S	11
J	388	Graham, Hugh	E hf S hf 15	8	M F and T	2
J	430	Getty, Uriah	W hf N hf 15, pt 16	6	M F and O	2
J	431	Getty, John F	W hf N hf 15, pt 16	6	M F and T	2
J	432	Getty, Edwin	W hf N hf 15, pt 16	6	M F and T	2
J	383	Graham, Alex	W hf S hf 15	8	M F and T	2
J	437	Hill, John L	E pt N hf 16 and o p	8	M F and O	2
	438	Hill, James T	E pt N hf 16 and o p	8	M F & F S	2
J	461	Humphrey, Alfred	N hf S hf 17	7	M F and T	2
J	439	Hill, James A	N hf 15 and o p	7	M F and O	2
	447	Henderson, George	N hf 19	6	M F and O	2
J	448	Henderson, John	N hf 19	6	M F and O	2
	449	Henderson, Edwin	N hf 19	6	M F & F S	2
	576	Leitch, Dugald sr	S hf 13 and o p	7	M F and O	2
J	577	Leitch, Dugald jr	S hf 13 and o p	7	M F and T	2

Jur.	No. on Roll.	NAME.	LOT.	Concession or Street.	Other Description.	P.O.
	591	Mitchell, John C	W hf S hf 15	7	M F and O	2
J	592	Mitchell, Jas M	W hf N hf 14	6	M F and O	2
	599	McLean, Neil	N hf 21	9	M F and O	2
J	603	McLellan, Angus	S hf 20 and other pre	10	M F and O	2
J	604	McLellan, Donald	S hf 20 and other pre	10	M F and O	2
J	610	McLean, Allan	E hf N hf 14	8	M F and O	2
J	607	McLean, Arch	W hf N hf 14	8	M F and O	2
J	609	McLean, Duncan	W hf N hf 14	8	M F and O	2
J	608	McLean, Chas	W hf N hf 14	8	M F and O	2
J	611	McLean, Chas	E pt S hf 18	9	M F and O	2
	613	McLellan, Arch	pt W hf N hf 18	8	M F and O	2
J	615	McKellar, Duncan	S hf 23, S hf 21	9	M F and O	11
J	616	McDougall, Alex C	S hf 24	8	M F and O	11
J	617	McGugan, Godfrey	N hf 23 and 21	7	M F and O	11
	618	McGugan, John A	N hf 23 and 21	7	M F & F S	11
J	620	McGugan, Angus	22, N hf 18, S hf 22	7 and 8	M F and O	2
J	621	McGugan, Malcolm	22, N hf 18, S hf 22	7 and 8	M F and O	2
J	622	McGugan, John	22, N hf 18, S hf 22	7 and 8	M F and O	2
J	623	McGugan, Duncan	22, N hf 18, S hf 22	7 and 8	M F and O	2
J	624	McNeil, John	S hf 19, N hf 20	8 and 9	M F and O	2
J	628	McNeil, Angus C	N hf 19 and o p	7	M F and O	2
J	632	McNeil, John C	N hf 19 and o p	7	M F and O	2
J	629	McNeil, Duncan C	N hf 19 and o p	7	M F and O	2
J	630	McNeil, Malcolm C	N hf 19 and o p	7	M F and O	2
J	631	McNeil, Arch C	N hf 19 and o p	7	M F and O	2
	633	McMillan, James	W hf N hf 16	7	M F and O	2
	634	McMillan, David	W hf N hf 16	7	M F & F S	2

Jur.	No. on Roll.
	635
J	644
	645
	646
	647
J	626
J	627
J	654
J	648
J	649
	651
J	67
J	130
J	72
	83
J	84
J	87
	87
J	87
J	88
J	88
J	88
J	88
J	88

Just.	No. on Roll.	NAME.	LOT.	Concession or Street	Other Description.	P.O
	635	McMillan, Herbert....	W hf N hf 16.....	7	M F & F S..	2
J	644	McLean, Duncan L sr..	N hf 24	7	M F and O..	11
	645	McLean, Duncan L jr..	N hf 24	7	M F & F S..	11
	646	McLean, Arch	N hf 24	7	M F & F S..	11
	647	McLean, John A.....	N hf 24	7	M F & F S..	11
J	626	McNeil, Duncan M....	S hf 18	8	M F and O..	2
J	627	McNeil, Arch M.....	S hf N hf 17	8	M F and O..	2
J	654	McPhail, Dngald ...	S hf 18	7	M F and O..	2
J	648	McKellar, James.....	N hf 23, N hf 22	6	M F and O ..	2
J	649	McKellar, Duncan....	N hf 23	6	M F & F S..	2
	651	McNeil, Alex	S hf 19.....	7	M F and O..	2
J	67	McVicar, John	N hf 20.....	6	M F and O..	2
J1302		McVicar, Allan	N hf 20.....	6	M F and O..	2
J	727	Northcott, Robt T....	S hf N hf 17	6	M F and O..	1
	839	Rose, Peter	S hf 16	7	M F and O..	2
J	840	Rose, Alex	N hf 20.....	7	M F and O..	2
J	872	Reinhardt, Peter	E cor N hf 13.....	6	M F and O..	2
	873	Reinhardt, Hannibal..	E cor N hf 13. . .	6	M F & F S..	2
J	879	Stanley, Peter.....	E hf N hf 22	8	M F and O..	2
J	880	Stanley, Donald S ...	E hf N hf 22	8	M F and O..	2
J	881	Sinclair, Neil	S hf 23.....	8	M F and O..	11
J	882	Sinclair, Arch.....	S hf 23.....	7	M F and O..	11
J	885	Sinclair, Arch.....	S hf 24.....	8	M F and O..	11
J	886	Snelgrove, David ...	S hf S hf 17.....	7	M F and T..	2

Jur.	No. on Roll.	NAME.	LOT.	Concession or Street.	Other Description.	P.O.
	887	Snelgrove, John F.	S hf S hf 17	7	M F & F S.	2
J	963	Sabine, Richard	E hf S hf 14	7	M F and F.	2
J	971	Thompson, David	cen pt 17	10	M F and O.	2
J	976	Thompson, Robt.	E pt 17, pt 15 and 18	9	M F and O.	2
J	977	Thompson, John W	E pt 17, pt 15 and 18	9	M F and T.	2
J	978	Thompson, Robt G.	E pt 17, pt 15 and 18	9	M F and T.	2
J	973	Thompson, Wm A.	N hf 20, W hf N hf 21	10	M F and O.	2
J	970	Turner, Donald	W hf N hf 15	8	M F and O.	2
	979	Turner, Hugh sr.	S hf 17 and o p.	9	M F and O.	2
J	981	Turner, Hugh jr.	S hf 17 and o p.	9	M F and T.	2
J	980	Turner, Peter	S hf 17 and o p.	9	M F and T.	2
J	1037	Walsh, John	pt N hf 14	9	M F and O.	2
J	1038	Walsh, John P	pt N hf 14	9	M F and O.	2
J	1039	Walsh, Walter	pt N hf 14	9	M F and O.	2
J	1036	Wark, Thomas	S hf 24	9	M F and O.	11
J	1052	Waters, Asa	N hf N hf 17	6	M F and O.	2

PART II.—Persons Entitled to Vote at Municipal Elections ONLY.

	319	Collins, Wm G	N hf N hf S hf 13, 14	9	O	2
	178	Collins, Ellen	N hf 14 pt Shf 14	7 and 8	O	2
	302	Degraw, John	W pt N hf 16	8	O	2
	37	Elworthy, John P.	N hf 24	10	O	15

Jur. No. Ro
382
389
384
518
386
387
303
600
612
625
331
602
601
652
614
68
65
761
972
974
1128

Polling Sub-Division No. 5.

47

Jur.	No. on Roll.	NAME.	LOT.	Concession or Street.	Other Description.	P.O.
	382	Graham, Annie	W hf S hf 15	8	O	2
	389	Graham, Mary	E hf S hf 15	8	T	2
	384	Graham, Christina	pt N hf 18	6	O	2
	518	James, David	N pt 13	9	O	2
	386	Leitch, Margaret	E hf S hf 15	8	O	2
	387	Leitch, Christina	E hf S hf 15	8	O	2
	303	McLean, Elizabeth	N hf 23	8	O	2
	600	McGuire, Catherine	N cor 14	9	O	2
	612	McNeil, Sarah	pt N hf 18	8	O	2
	625	McNeil, Nancy	S hf 18	8	O	2
	331	McLean, Margaret	E hf 18	9	O	2
	602	McArthur, Dugald	N hf 22	10	O	9
	601	McArthur, John	N hf 22	10	O	9
	652	McNeil, James	E hf N hf 21	6	O	11
	614	McLellan, Nevin	N hf 19	8	O	10
	68	McVicar, Arch'd	N hf 20	6	O	2
	653	McIntyre, Arch	pt N hf 18	6	O	11
	761	Pincombe, John	N hf 22, N hf 24	9 and 8	O	11
	972	Thompson, George	E pt 17	10	O	2
	974	Thompson, John R.	pt N hf 15	10	O	2
	1128	Zavitz, Edward	pt 15	10	O	1

**PART III. - Persons Entitled to Vote at Elections to the Legislative
Assembly ONLY.**

Jur.	No. on Roll.	NAME.	LOT.	Concession or Street.	Other Description.	P.O.
	306	Dolphin, Neil	pt S hf 20	9	M F	2
	307	Dolphin, Peter	pt S hf 20	9	M F	2
	333	Frazer, Frederick	S hf 23	9	M F	2
	381	Gough, Nelson	S hf 22	9	M F	2
	440	Humphreys, John	W hf S E qr 14	8	M F	2
	441	Hodgins, Anson	W hf N hf 13	7	M F	1
	523	Jackson, William	W hf N hf 22	8	M F	2
	650	McArthur, Neil	W hf N hf 21	6	M F	2
	831	Root, Harmon	N hf 14	7	M F	2
	964	Sabine, William	E hf S hf 14	7	M F	2
	965	Sabine, Thomas	E hf S hf 14	7	M F	2

Polling Sub-Division No. 6,

Comprising all that portion of the Township lying in the 7th, 8th, 9th and
10th Concessions West of the Side Road between Lots 12 and 13.

Polling place at School House, School Section No. 8.

PART I.—Persons Entitled to Vote at BOTH Municipal Elections and Elections to the Legislative Assembly.

Jur.	No. on Roll.	NAME.	LOT.	Concession or Street.	Other Description.	P.O.
J	6	Adair, John E.	W hf N hf 6	8	M F and O.	2
	4	Adamson, James	cen pt 11	9	M F and O.	2
	5	Adamson, John Q	cen pt 11	9	M F & F S.	2
	7	Adair, Geo W.	W hf N hf 6	8	M F & F S.	2
J	27	Barnett, Edwin	pt N hf 11	9	M F and O.	2
	47	Bennett, James	W hf N hf 5	10	M F and O.	2
J	48	Bennett, George	W hf N hf 5	10	M F and O.	2
J	46	Bennett, Arthur	E hf N hf 5	10	M F and O.	2
J	69	Barry, Michael	S hf S hf 1 and o p	7 and 8	M F and O.	8
J	72	Bryant, Wm	E hf S hf 5	8	M F and O.	2
	29	Bairns, John	S hf 2 and o p	7	M F and O.	7
J	73	Ball, Thos jr.	pt N hf 6	7	M F and O.	2
J	30	Bairns, Michael	S hf 2 and o p	7	M F and O.	2
J	61	Beamer, Henry H	N E cor 8	8	M F and O.	2
	62	Beamer, Homer	N E cor 8	8	M F & F S.	2
J	71	Bowley, Chas	N pt N hf 4	8	M F and T.	8
J	65	Brown, Robert	N hf N hf 8	8	M F and T.	2

Jur.	No. on Roll.	NAME.	LOT.	Concession or Street.	Other Description.	P.O.
J	41	Bolton, Joseph	S hf 8	10	M F and O.	2
	45	Brown, George	W pt N hf 4	10	M F and O.	2
J	170	Collins, James W	S hf N hf 12	9	M F and O.	2
J	171	Collins, Bruce O	pt W hf 11	8	M F and T.	2
	164	Collins, Oscar	pt N hf 11	8	M F and O.	2
J	174	Crealy, Truman	pt N hf N hf 12	9	M F and O.	2
	175	Crealy, John E	pt N hf N hf 12	9	M F & F S.	2
	160	Casc, George	cen pt N hf 4	10	M F and O.	2
	161	Case, Peter	cen pt N hf 4	10	M F & F S.	2
J	162	Case, James	E pt N hf 4	10	M F and O.	2
	156	Chute, Edmund	W hf 6, W hf N hf 5	9	M F and O.	2
J	157	Chute, Lionel	W hf 6, W hf N hf 5	9	M F and T.	2
J	158	Cowan, Wm	E hf 7 and o p	9	M F and O.	2
	159	Cowan, Martin H	E hf 7 and p	9	M F & F S.	2
J	154	Cowan, Robt L	S hf 6	10	M F and O.	8
	179	Cawthrope, Wm	N hf 9, pt N hf 11	8 and 9	M F and O.	2
	183	Columbus, Isaac	N hf 12	7	M F and O.	2
J	165	Campbell, John A.	E hf S hf 12	7	M F and O.	2
	192	Cowan, Alex	E hf N hf 2	8	M F and O.	8
	193	Cowan, Malcolm	E hf N hf 2	8	M F & F S.	8
	194	Cowan, Arch'd	F hf N hf 2	8	M F & F S.	8
	195	Cowan, Ronald	E hf S hf 3, E hf S hf 4	8	M F and O.	2
	196	Cowan, Dougald	W hf S hf 4	8	M F and O.	2
J	181	Clement, Morris	N hf 7	7	M F and T.	2
J	198	Caldwell, Thos	S pt 1	7	M F and T.	8
	184	Columbus, Isaac jr	N hf 12	7	M F & F S.	2
	153	Carman, Edward	pt N hf 12	9	M F and O.	2

Jur.	No. on Roll.
J	293
J	289
J	298
J	294
J	297
J	292
	290
J	318
J	44
J	328
	329
J330	1
J	334
J	337
J	338
J	379
	380
	390
J	391
J	393
J	394
	395
	396
	397
J	37

Jur.	No. on Roll.	NAME.	LOT.	Concession or Street.	Other Description.	P.O
J	293	Dodge, John	E pt N hf 4	.9	M F and	O.. 2
J	289	Doan, Abraham	W hf N hf 7	.9	M F and	O.. 2
J	298	Drake, John	E pt S hf 6	.9	M F and	O.. 2
J	294	Dodge, Thor	S hf W hf 3	.10	M F and	O.. 8
J	297	Deere, Edward	N hf 8	.10	M F and	T.. 2
J	292	Degraw, Theodore	pt N hf 11	.9	M F and	O.. 2
	290	Doan, Beecher	N W pt W hf N hf 7	.9	M F and	O.. 2
J	318	Early, Wm H	pt S hf 12	.9	M F and	T.. 2
J	44	Elliott, Henry	W hf N hf 3	.10	M F and	T.. 2
J	328	Ferguson, Ed G	S hf 5	.10	M F and	O.. 2
	329	Farthing, Wm	N pt E pt 12, pt S hf 12	.8	M F and	O.. 2
J	330	Farthing, John	S pt E hf E hf 11 & o p.	.8	M F and	O.. 2
J	334	Ferguson, James	E hf 10, pt 10 and 11	.8 and 9	M F and	O.. 2
J	337	Fisher, Clement	N hf 5	.8	M F and	O.. 2
J	338	Fisher, Wellington	W pt N hf 3	.8	M F and	O.. 8
J	379	Gregory, Thos	E hf N hf 1, W hf S hf 1	.9 and 10	M F and	O.. 8
	380	Gregory, Walter C	E hf N hf 1, W hf S hf 1	.9 and 10	M F & F S	.. 8
J	390	Gripton, Henry	W hf E hf 11	.8	M F and	O.. 2
J	391	Gripton, Wm T	W hf E hf 11	.8	M F and	T.. 2
J	393	Grosvenor, Edward	W hf N hf 2	.8	M F and	T.. 8
J	394	Gallagher, Owen	N hf 2	.7	M F and	O.. 2
	395	Gallagher, Michael	N hf 2	.7	M F & F S	.. 2
	396	Gallagher, Eugene	N hf 2	.7	M F & F S	.. 2
	397	Gallagher, Wm	N hf 2	.7	M F & F S	.. 2
J	374	Gallagher, John	W hf S hf 3	.8	M F and	O.. 2

Jur.	No. on Roll.	NAME.	LOT.	Concession or Street.	Other Description.	P.O.
J	435	Hunter, Cyrus	E hf N hf 6	9	M F and O	2
J	444	Harrington, Daniel	N hf 1	8	M F and O	8
	446	Harrington, John sr	W hf S hf 1	8	M F and O	8
J	445	Harrington, John jr	N hf 1	8	M F and T	8
	434	Hill, Wm	pt N hf 11	9	M F and O	2
J	520	Jones, Wm	W pt N hf 8	9	M F and T	2
J	522	Jennings, John	S E pt S hf 11	9	M F and T	2
J	526	Kitchen, Hiram	S hf N hf 8	8	M F and T	2
J	525	Kitchen, Harman	pt S hf 9	9	M F and O	2
J	542	Kadey, William	E hf S hf 9	9	M F and T	2
	551	Lamont, Donald jr	N hf 11, pt 10	7	M F & F S	2
J	543	Lamont, John	S hf 9	8	M F and O	2
J	549	Lamont, Donald sr	N hf 11, pt 10	7	M F and O	2
	552	Lamont, John	N hf 11, pt 10	7	M F & F S	2
J	545	Lihou, James	E hf N hf 5	9	M F and T	2
J	550	Lamont, Duncan	N hf 11, pt 10	7	M F & F S	2
	553	Lamont, Angus	N hf 11, pt 10	7	M F & F S	2
J	554	Lamont, Arch	S hf 11, pt S hf 10	7	M F and O	2
J	70	Lethbridge, Samuel	N hf 4	7	M F and O	2
J	596	Morrow, Thomas	W hf N hf 8, pt 7	7	M F & F S	2
J	597	Morrow, Wm	W hf N hf 8, pt 7	7	M F & F S	2
	593	Mitchell, Arvy	pt N hf 11	9	M F and O	2
	594	Mitchell, John	pt N hf 11	9	M F and T	2
J	658	McDougall, Hugh	W hf S hf 5 and o p	8	M F and O	2

Jur.	No. on Roll.
J	659
J	657
	638
J	619
	639
	640
J	660
J	605
J	606
J	926
J	637
	721
	722
J	756
J	757
J	787
J	772
J	771
J	770
J	766
	768
	764
J	777
	774

Jur.	No. on Roll.	NAME.	LOT.	Concession or Street.	Other Description,	P.O.
J	659	McDougall, Duncan	W hf S hf 5 and o p	8	M F and O.	2
J	657	McDougall, Allan	S hf 6	8	M F and O.	2
	638	McNeil, John sr	S hf S hf 8	8	M F and O.	2
J	619	McNeil, Arch	pt W hf N hf 7	7	M F and T.	2
	639	McNeil, Alex	S hf S hf 8	8	M F & F S.	2
	640	McNeil, Malcolm	S hf S hf 8	8	M F & F S.	2
J	660	McDougall, Allan	W hf S hf 5 and o p	8	M F and O.	2
J	605	McCandless, Andrew	E pt S hf 12, pt 13	9	M F and O.	2
J	606	McCandless, Jos J	E pt S hf 12, pt 13	9	M F and T.	2
J	926	McWhinney, John	W pt N hf 10	8	M F and O.	2
J	637	McLean, Hector C	W hf W hf 11	8	M F and T.	2
	721	Nichols, Edward	pt N hf 12	9	M F and O.	2
	722	Nicholls, Charles	pt N hf 12	9	M F and T.	2
J	756	Ogg, John	E hf N hf 8	7	M F and O.	2
J	757	Oaks, Samuel jr	S hf 7	8	M F and O.	2
J	787	Pearson, Edward	W hf S hf 1	9	M F and O.	8
J	772	Pike, Wm	N hf N hf 6	10	M F and O.	2
J	771	Patterson, Thos	S hf N hf 6	10	M F and O.	2
J	770	Patterson, Geo	W hf 2	10	M F and O.	8
J	766	Patterson, Andrew	E hf 2	10	M F and O.	8
	768	Patterson, John A	E hf 2	10	M F & F S.	8
	764	Powers, John	W pt N hf 9	9	M F and O.	2
J	777	Perkins, Peter	S hf 8	9	M F and T.	2
	774	Pilfrey, Wm A	S W pt S hf 10	9	M F and O.	2

Polling Sub-Division No. 6.

Jur.	No. on Roll.	NAME.	LOT.	Concession or Street.	Other Description.	P.O.
	775	Pilfrey, John	S W pt S hf 10	9	M F and O	2
	786	Payne, Harold	E hf S hf 1	9	M F & F S	8
	778	Powers, Alfred	S hf 9	7	M F and O	2
	779	Powers, John A	S hf 9	7	M F & F S	2
	780	Powers, Eli T.	S hf 9	7	M F & F S	2
J	783	Paine, John J.	W hf S hf 4	9	M F and O	8
J	784	Payne, Thos H	S hf 3	9	M F & O T	8
J	782	Patterson, Neil	W hf S hf 3	7	M F and O	7
J	763	Parsons, Edwin F	S hf 9	10	M F and T	2
J	821	Quick, William	W hf S hf 7	9	M F and O	2
	822	Quick, Robert	W hf S hf 7	9	M F & F S	2
J	825	Robinson, Joseph	W hf S hf 7	10	M F and T	2
J	823	Robinson, Thos	E hf S hf 7	10	M F and O	2
J	924	Root, Nathaniel	E pt N hf 6	8	M F and O	2
J	828	Reid, Wm B	S hf S hf 3	10	M F and T	8
J	875	Stewart, Jos W	pt N hf 11	9	M F and O	2
J	878	Saxton, Wm B	cen pt 12 and o p	8	M F and O	2
	877	Saxton, John E	S W pt 12	8	M F and O	2
J	883	Simpson, Charles	pt N hf 10, pt S hf 10	8 and 9	M F and O	2
J	925	Smith, Calvin S	E pt N hf 6	8	M F and T	2
	927	Steedman, Wm	W pt N hf 10	8	M F and T	2
	64	Schram, Fred	N hf S hf 8	8	M F and O	2

Jur. No. o
Roll
J 928
J 884
1023
J1022
J1021
J1041
J1042
J1044

40

182

189

172

180

291

767

295

63

377

378

Jur.	No. on Roll.	NAME.	LOT.	Concession or Street.	Other Description.	P.O
J	928	Saxton, Swain	N hf 9	7	M F and O.	2
J	884	Snelgrove, Samuel	W hf S hf 12	7	M F and O.	2
	1023	Vincent, Jacob	N hf S hf 8	7	M F and O.	2
J	1022	Vincent, George jr.	S hf S hf 8	7	M F and O.	2
J	1021	Vincent, Geo sr	S hf 4	10	M F and O.	2
J	1041	Whiting, John jr	W pt N hf 5	7	M F and O.	2
J	1042	Whiting, John sr	E pt N hf 5	7	M F and O.	2
J	1044	Wakem, Albert	W hf S hf 5	7	M F and O.	7

PART II.—Persons Entitled to Vote at Municipal Elections ONLY.

	40	Barton, Julia	E cor N hf 8	9	O	2
	182	Columbus, Martha	E pt S hf 10	8	O	2
	189	Cowan, Mary	N hf 4	8	O	2
	172	Collins, Mary E	pt N hf 11	8	O	2
	180	Clement, Geo	N hf 7	8	O	2
	291	Degraw, Fanny	pt N hf 11	9	O	2
	767	Dyre, George	E pt N hf 3	9	O	16
	295	Gunn, Hector	N hf 8	10	O	2
	63	Getty, Margaret E.	cen pt N hf 8	8	O	2
	377	Gilzean, Geo D	pt 9 and 10	9	O	2
	378	Gilzean, James	pt 9 and 10	9	O	2

Jur.	No. on Roll.	NAME.	LOT.	Concession or Street.	Other Description.	P.O
	436	Healy, James	N hf 1	10	0	2
	521	Jeffrey, David	S E cor N hf 9	10	0	2
	197	Kettlewell, George	S pt 1	7	0	8
	540	Kernohan, John	N hf 2	9	0	15
	541	Kitchen, John D	E hf S hf 9	9	0	2
	762	Lea, John	S hf 9	10	0	15
	296	Murray, Wm H	N hf 8	10	0	2
	595	Morrow, Ann	W hf N hf 8	7	0	2
	656	McGurn, Edward	W pt S hf 2	9	0	2
	720	Northcott, Jas E	W pt N hf 9	9	0	2
	785	Payne, Margaret	E hf S hf 1	9	0	8
	788	Pearson, Joseph	W hf N hf 1	9	0	8
	773	Parker, Chas W	N E cor 9	10	0	2
	544	Reynolds, Isabella	E hf N hf 5	9	0	2
	824	Robinson, Amelia	W hf S hf 7	10	0	2
	392	Rowe, Annie	W hf N hf 2	8	0	8

Jur.	No. on Roll.
	876

827

975

3

42

43

173

655

723

755

765

769

829

830

888

Jur.	No. on Roll.	NAME.	LOT.	Concession or Street.	Other Description.	P.O.
	876	Saxton, Francis B	pt N hf 9 and o p	10	O	2
	827	Tull, Joseph	S hf S h	10	O	8
	975	Thompson, Andrew	pt 10 at	9	O	2

PART III.—Persons Entitled to Vote at Elections to the Legislative Assembly ONLY.

	3	Ames, Asael	pt N hf 4	9	M F	2
	42	Bolton, Charles	S hf 8	10	M F	2
	43	Boucher, Daniel	N hf 8	9	M F	2
	173	Collins, John E	pt N hf 11	9	M F	2
	655	McLean, Allan	W pt N hf 3	8	M F	8
	723	Naden, Thos E	S hf 1	8	M F	8
	755	Oak, Thor	S hf 4	10	M F	2
	765	Powers, Joseph	pt 10 and 11	9	M F	2
	769	Payne, Geo G	N hf 2	9	M F	8
	829	Richardson, Robert	pt N hf 3	9	M F	8
	830	Richardson, William	pt N hf 3	9	M F	8
	888	Seamore, Thomas	pt W hf S hf 5	7	M F	7

Polling Sub-Division No. 7,

Comprising all that portion of the Township lying in the North half of the
3rd, the 4th, and 5th, and the South half of the 6th Concessions
East of the Side Road between Lots 12 and 13.

Polling place at School House, School Section No. 10.

PART I.—Persons Entitled to Vote at BOTH Municipal Elections and Elections to the Legislative Assembly.

Jur.	No. on Roll.	NAME.	LOT.	Concession or Street.	Other Description.	P.O
J	14	Adams, Ebenezer	S hf N hf 20	5	M F and O..	1
J	11	Adair, Joseph H.	E hf N hf 15	4	M F and O..	1
J	10	Adair, Wm N.	W hf N hf 15	4	M F and O..	1
J	15	Arnold, Robert	S hf N hf 20	4	M F and O..	1
J	18	Arnold, Reuben	E hf S hf 20 and o p.	4	M F and O..	1
J	19	Arnold, Albert	N hf 23	3	M F and O..	1
	16	Arnold, Joshua	pt N hf 16	4	M F & F S..	1
	12	Adair, John W	E hf N hf 15	4	M F & F S..	1
J	78	Baxter, Francis	W pt N hf 16	5	M F and O..	1
J	84	Bond, James	E pt S hf 16	4	M F and O..	1
J	33	Bond, Robert	W hf S hf 14	5	M F and O..	1
J	32	Bond, Arthur L	N hf 14	4	M F and T..	1
J	81	Brown, Geo.	S hf 19	6	M F and T..	1
J	87	Bond, Stephen J.	pt N hf 14 and o p.	3	M F and O..	1
J	85	Bond, George	S pt S hf 15 and o p.	5	M F and O..	1
	86	Ballantine, James	pt S hf 13	6	M F and O..	2
J	141	Brown, John	E hf N hf 15	3	M F and T..	1

Polling Sub-Division No. 7.

Jur.	No on Roll.	NAME.	LOT.	Concession or Street.	Other Description.	P.O.
J	79	Brown, Henry	W hf S hf 18 and o p	6	M F and O	1
	88	Brearly, Henry	E pt N hf 21	3	M F and O	1
J	207	Campbell, John	pt W hf 22, pt E hf 22	5	M F and O	10
J	212	Campbell, Arch L	E hf N hf 23, S hf 24	5 and 6	M F and T	11
J	213	Campbell, Norman L	E hf N hf 23, S hf 24	5 and 6	M F and T	11
J	214	Campbell, John L	E hf N hf 23, S hf 24	5 and 6	M F and T	11
J	217	Campbell, Peter L	N hf 13	4	M F and O	2
J	201	Campbell, Mal S	W hf N hf 13	5	M F and O	2
J	204	Courtis, Wm	W hf N hf 15 and o p	5	M F and O	1
J	202	Courtis, Thos	E hf N hf 13	5	M F and O	1
J	191	Courtis, Robt B	pt S hf 14	6	M F and O	2
J	206	Courtis, Stephen B	W hf S hf 15	5	M F and O	2
J	210	Campbell, Mal J	pt S hf 23	6	M F and O	10
	208	Campbell, Mal	S hf 22	6	M F and O	10
J	209	Campbell, Arch R	S hf 22	6	M F & F S	10
J	199	Cummiford, M W	pt W hf 18	4	M F and O	2
	203	Cave, Thomas	N cor S hf 16	4	M F and O	2
	206	Cave, Joseph	N cor N hf 17	4	M F and O	2
J	308	Davidson, John J	S hf 20, pt 19	4 and 5	M F and O	1
J	288	Davidson, Thomas	W hf S hf 19 and o p	4 and 5	M F and O	1
	348	Forsythe, Wm	pts 17 and 18	3	M F and O	1
J	341	Fletcher, Arch	S hf 21 and o p	6	M F and O	10
	349	Forbes, Duncan	N E cor N hf 22	3	M F and O	1
J	342	Frank, Wm P	N hf 22	4	M F and O	10

Jur.	No. on Roll.	NAME.	LOT.	Concession or Street.	Other Description.	P.O.
	398	Green, Edward	N hf 21	5	M F and O.	2
J	399	Green, Thomas	E hf S hf 20	6	M F and O.	2
J	140	Getty, Albert	E hf N hf 15	3	M F and O.	1
J	406	Glover, David	W hf S hf 21	4	M F and O.	1
	407	Glover, Jackson	W hf S hf 21	4	M F & F S.	1
J	410	Glover, James	W hf S hf 22	4	M F and O.	1
J	409	Getty, Byron B	W hf N hf 15 and o p.	3	M F and O.	1
J	475	Hyatt, Horace	N hf 13 and o p.	3	M F & O T.	1
	476	Hyatt, Sherman	N hf 13 and o p.	3	M F & F S.	1
	477	Hyatt, Healon W	N hf 13 and o p.	3	M F and O.	1
	466	Humphrey, George	pt N hf 17	3	M F and O.	1
	458	Howe, Wm	S cor 14 and o p.	6 and 5	M F and O.	1
	460	Humphrey, Thomas	N cor S hf 16	6	M F and O.	1
J	508	Iles, Wm	E pt 18	4	M F and T.	1
J	547	Lamont, Duncan	N hf 24	4	M F and O.	10
	915	Lipsit, Charles	pt N hf 16	4	M F and O.	1
	745	Lipsit, Lewis	W hf S hf 20	4	M F and T.	1
J	598	Mahon, John	W pt N hf 16	4	M F and O.	1
J	681	McBain, Dugald	S hf 23	5	M F and O.	10
J	682	McBain, Peter	S hf 23	5	M F and O.	10
	641	McCallum, Neil	N hf 24	5	M F and O.	10
J	642	McCallum, Duncan	N hf 24	5	M F & F S.	10
J	686	McEvoy, Thos A	pt 17	3 and 4	M F and T.	1

Jur.	No. on Roll.	NAME.	LOT.	Concession or Street.	Other Description.	P.O
J	982	McCready, Thomas	S hf 24	5	M F and O	10
J	983	McCready, James	S hf 24	5	M F and O	10
J	1301	McMurphy, Arch'd	E hf N hf 23	4	M F and T	10
	726	Northeott, Wm	pt N hf 16	4	M F and O	1
	750	Norton, Wm	N W pt N hf 22	3	M F and O	1
	724	Northcott, Thos A.	pt N hf 16	4	M F and O	1
J	728	Northeott, Augustus	S hf 17 and o p	6	M F and O	1
J	760	Oliver, John T.	N hf N hf 18	3	M F and T	1
J	808	Parrott, Geo B	W hf S hf 13 and o p	4	M F and O	1
J	809	Parrott, Edward	W hf S hf 13 and o p	4	M F and T	1
J	810	Parrott, Alex	W hf S hf 13 and o p	4	M F and T	1
	847	Robinson, Joseph	pt N hf 17 and 18	3	M F and O	1
J	848	Runnalls, Joseph	N hf 19	3	M F and O	1
J	826	Root, John	E hf 17	4	M F and T	1
J	896	Sabine, Caleb	E hf N hf 15	5	M F and O	2
	1068	Sisson, Joseph	pt S hf 16	4	M F and O	1
	930	Sullivan, Thos	W hf N hf 20	3	M F and O	1
J	931	Sullivan, John	W hf N hf 20	3	M F and O	1
J	902	Snelgrove, Wm	N hf 19	5	M F and O	1
J	900	Snelgrove, Wm Y	E hf N hf 18, pt 18	5 and 6	M F and O	1
	901	Snelgrove, Orva	E hf N hf 18, pt 18	5 and 6	M F & F S	1
	916	Snelgrove, Isaac	pt S hf 17	4	M F and T	1

Jur. No. on Roll.	NAME.	LOT.	Concession or Street.	Other Description.	P.O.
J 899	Sisson, Cephas	W hf N hf 18	5	M F and O	1
J 897	Sabine, John	E hf S hf 15	6	M F and O	2
J 898	Sabine, Lomis	E hf S hf 15	6	M F and O	2
J 17	Snelgrove, Joshua	S hf N hf 20	4	M F and T	1
J 895	Sabine, James	W hf S hf 15	6	M F and O	2
J 903	Sleath, William	E hf S hf 18	5	M F and O	1
987	Topping, John	N pt N hf 18	4	M F and T	1
J1026	Veale, Wm	cen pt 16	5	M F and O	1
1025	Veale, Arch	W pt S hf 16	5	M F and O	1
J1028	Vennor, Solcmon	N hf 16	3	M F and O	1
J1027	Vanatter, John N	N hf N hf 20	4	M F and O	1
J1032	Vanatter, Daniel	pt 19	4	M F and O	1
J1024	Veale, John R	pt W hf S hf 16	5	M F and O	1
1033	Vanatter, Iro E	pt E hf N hf 21	3	M F and T	1
1030	Vennor, Wm	pt N hf 17 and 18	3	M F and T	1
J1055	Wilton, Thomas	E hf S hf 17	5	M F and O	1
1059	Wickett, Richard	W hf S hf 13	5	M F and O	2
1060	Wickett, George	W hf S hf 13	5	M F & F S	2
J1056	Waters, Lindley	E hf S hf 13, pt 19	5	M F and O	1
1057	Waters, Reuben A	E hf S hf 13, pt 19	5	M F & F S	1
1050	Wilton, Wesley	S hf 16, E pt 13	6	M F and O	2
J1063	Wyatt, Wm	W hf S hf 14, pt 13	4	M F and O	1
J1064	Winter, Wm	S hf 15	4	M F and O	1
1065	Winter, John F	S hf 15	4	M F & F S	1

Jur.	No. on Roll.	NAME.	LOT.	Concession or Street.	Other Description.	P.O.
	1066	Winter, Chas O	S hf 15	4	M F & F S.	1
J1070		Willsie, Asa	E hf N hf 20	3	M F and O.	1
J1069		Winter, George	pt S hf 10	4	M F and T.	1
J1048		Wilton, Amos P	cen pt 13	6	M F and O.	2
	1049	Wilton, Arthur W	cen pt 13	6	M F & F S.	2
	1054	Wilton, Amos E	W hf S hf 17	5	M F & F S.	1
	1067	Welch, Philemon	S cor S hf 16	4	M F & F S.	2

PART II.—Persons Entitled to Vote at Municipal Elections ONLY.

	76	Bond, Annis	pt N hf 17	5	O	1
	347	Baxter, Harriet	pt N hf 16	5	O	1
	31	Campbell, Arch	N hf 14	4	O	2
	211	Campbell, Donald M.	S hf 24	6	O	11
	474	Getty, Mary	N hf 13	3	O	2
	400	Graham, Duncan	S hf 24	4	O	10
	401	Graham, Donald F.	S hf 24	4	O	10
	548	Lamont, Hugh	N hf 24	4	O	10
	68C	McIntaggart, Donald	N hf 24	3	O	10
	679	McKellar, Neil	pt S hf 23	4	O	11
	667	McIntyre, Hugh	N hf 21	4	O	10
	685	McEvoy, Andrew M.	pt 17	3 and 4	O	15

No. on Roll.	NAME.	LOT.	Concession or Street.	Other Description.	P.O.
678	McMurphy, John	E hf N hf 23	4	O	10
675	McMurphy, Duncan	W hf N hf 23	4	O	10
676	McMurphy, John	W hf N hf 23	4	T	10
677	McMurphy, Dougald	W hf N hf 23	4	T	10
729	Northcott, Ephraim	S hf 17 and o p	5 and 6	O	1
929	Smith, Wm H	W hf S hf 20	4	O	15
80	Thomas, David	S hf 19	6	O	15
1053	Wilton, Ellen	W hf S hf 17	5	O	1

PART III.—Persons Entitled to Vote at Elections to the Legislative Assembly ONLY.

13	Adair, Philip L	E hf N hf 15	4	M F	1
346	Fuller, Franklin	N hf 16	3	M F	1
459	Howe, William J	pt 14	5 and 6	M F	1
758	Hore, Charles	E hf N hf 15	5	M F	1
730	Nicholson, Murdock	N hf 17	3	M F	1

Polling Sub-Division No. 7.

65.

Jur. No. on Roll.	NAME.	LOT.	Concession or Street.	Other Description.	P.O.
798	Patterson, John	S hf 22	6	M F	2
838	Robinson, Wm G	pt N hf 17	5	M F	2
917	Snelgrove, Robt	N hf 17	3	M F	1
918	Snelgrove, Geo W	N hf 17	3	M F	1
891	Smitherman, A E	S hf 17	4	M F	1
892	Smitherman, Wm A	S hf 17	4	M F	1
914	Snelgrove, Joseph	pt N hf 17	3	M F	1
986	Todd, John	S hf 16	5	M F	1
1051	Waggood, James	S hf 17	4	M F	1

636 of the within named voters are qualified to serve on Juries.

I, MALCOLM McGUGAN, Clerk of the Municipality of Caradoc, in the County of Middlesex, do hereby certify that parts one and three of the within list constitute a correct list for the year 1895, of all persons appearing by the last revised Assessment Roll of the said Municipality to be entitled to vote at elections for members of the Legislative Assembly ; and that parts one and two constitute a correct list for said year of all persons appearing by the said roll to be entitled to vote at Municipal Elections in said Municipality, and I hereby call upon all electors to examine the said list, and if any omissions or other errors are perceived therein, to take immediate proceedings to have the said errors corrected according to law.

M. McGUGAN,
Clerk of the Township of Caradoc,
Mt. Brydges P. O.

Dated the 22nd day of July, 1895.



oc, in the
within list
ast revised
s for mem-
e a correct
l to vote at
electors to
therein, to
law.

Caradoc,
P. O.

EXTRACT FROM THE VOTERS' LISTS ACT, 1889.

The Sheriff shall immediately, upon the receipt of his copies, cause one of them to be posted up in a conspicuous place in the Court House ; the Clerk of the Peace, upon the receipt of his copies, shall cause one of them to be posted in a conspicuous place in his office ; every Public or Separate School Head Master or Mistress shall in like manner post up one of his or her copies on the door of the School House, and every Postmaster shall post up one of his copies in his Post Office.—SECTION 8.

