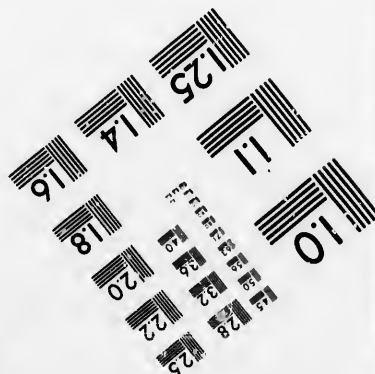
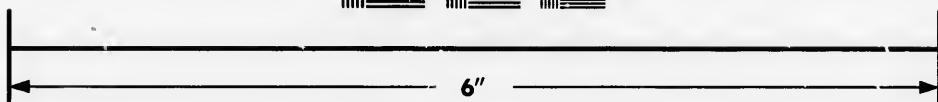
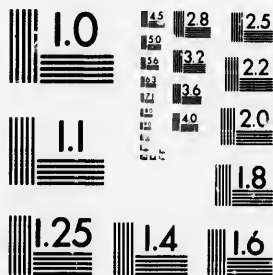


**IMAGE EVALUATION
TEST TARGET (MT-3)**



**Photographic
Sciences
Corporation**

23 WEST MAIN STREET
WEBSTER, N.Y. 14580
(716) 872-4503

**CIHM/ICMH
Microfiche
Series.**

**CIHM/ICMH
Collection de
microfiches.**



Canadian Institute for Historical Microreproductions / Institut canadien de microreproductions historiques

© 1986

The copy filmed here has been reproduced thanks to the generosity of:

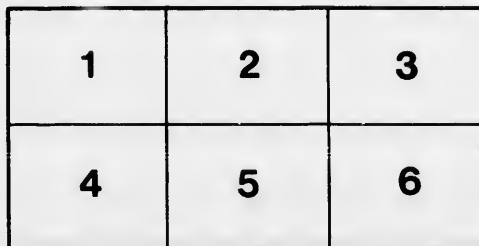
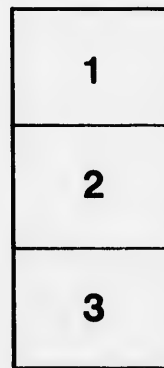
Archives of Ontario Library

The images appearing here are the best quality possible considering the condition and legibility of the original copy and in keeping with the filming contract specifications.

Original copies in printed paper covers are filmed beginning with the front cover and ending on the last page with a printed or illustrated impression, or the back cover when appropriate. All other original copies are filmed beginning on the first page with a printed or illustrated impression, and ending on the last page with a printed or illustrated impression.

The last recorded frame on each microfiche shall contain the symbol \rightarrow (meaning "CONTINUED"), or the symbol ∇ (meaning "END"), whichever applies.

Maps, plates, charts, etc., may be filmed at different reduction ratios. Those too large to be entirely included in one exposure are filmed beginning in the upper left hand corner, left to right and top to bottom, as many frames as required. The following diagrams illustrate the method:



L'exemplaire filmé fut reproduit grâce à la générosité de:

Archives of Ontario Library

Les images suivantes ont été reproduites avec le plus grand soin, compte tenu de la condition et de la netteté de l'exemplaire filmé, et en conformité avec les conditions du contrat de filmage.

Les exemplaires originaux dont la couverture en papier est imprimée sont filmés en commençant par le premier plat et en terminant soit par la dernière page qui comporte une empreinte d'impression ou d'illustration, soit par le second plat, selon le cas. Tous les autres exemplaires originaux sont filmés en commençant par la première page qui comporte une empreinte d'impression ou d'illustration et en terminant par la dernière page qui comporte une telle empreinte.

Un des symboles suivants apparaîtra sur la dernière image de chaque microfiche, selon le cas: le symbole \rightarrow signifie "A SUIVRE", le symbole ∇ signifie "FIN".

Les cartes, planches, tableaux, etc., peuvent être filmés à des taux de réduction différents. Lorsque le document est trop grand pour être reproduit en un seul cliché, il est filmé à partir de l'angle supérieur gauche, de gauche à droite, et de haut en bas, en prenant le nombre d'images nécessaire. Les diagrammes suivants illustrent la méthode.

errata
to

pelure,
n à

32X

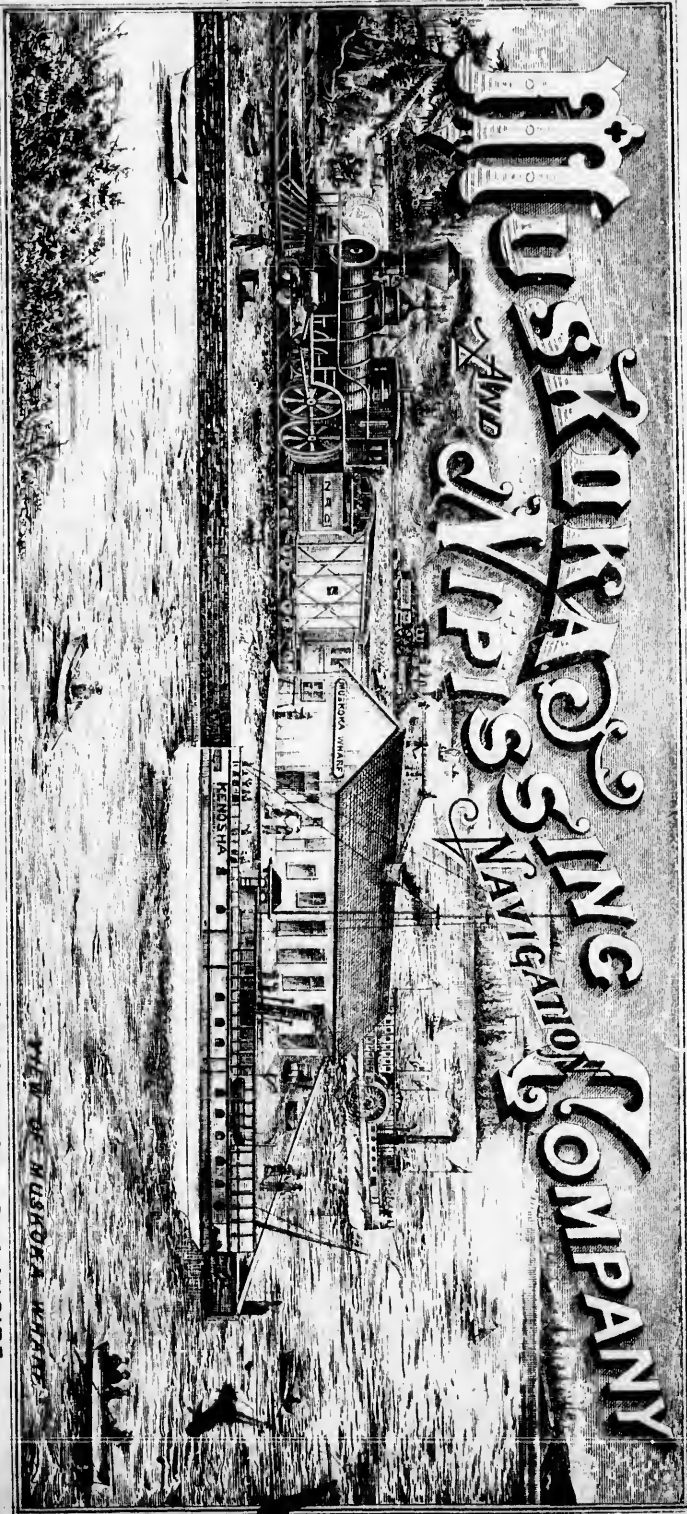
1883

11

MUSKOGEE & SINCORP COMPANY

AND

NAVIGATION



FOR RUNNING ARRANGEMENTS OF STEAMERS AND HOTEL ACCOMMODATION. SEE INSIDE.

VIEW OF MUSKOGEE RIVER

Lakes of Muskoka

1883

A SPLENDID NEW STEAMER ADDED & FORMER STEAMERS IMPROVED SINCE LAST SEASON.

HOTEL AND BOARDING HOUSE
ACCOMMODATION EXTENDED AND IMPROVED.

RAILWAY CONNECTIONS.

From **TORONTO**.—The Northern and North Western Railway Trains leaves City Hall Station at 7.45 a.m., and 11.55 a. m.

From **HAMILTON**.—The Northern and North Western Railway Trains leaves at 6.45 a.m., and at 3.35 p.m.

From **PORT HOPE**.—The Midland Railway Trains leave at 7 a.m., 10.20 a.m. and at 4.45 p.m., change to the Northern Railway at Orillia for Gravenhurst.

From **WHITBY**.—The Midland Railway Trains leave at 8.45 a.m., 10 a.m., and 6.40 p.m., change cars at Lindsay and Orillia for Gravenhurst.

From **BELLEVILLE**.—The Midland Railway Trains leave at 6.45 a.m., and 2;25 p.m., change cars at Orillia for Gravenhurst.

ARRIVE :

Gravenhurst, (Wharf Station) at 1:40 P.M. & 6:05 P.M.

DEPART :

Gravenhurst, (Wharf Station) at 6:20 A.M. & 2:15 P.M.

LAKE NIPISSING ROUTE; STR. INTER OCEAN & C. P. Ry.

The Trains of the Canadian Pacific Construction Department in connection with C. P. R. Trains from Brockville, Montreal and Ottawa, leave Mattawa on Tuesdays, Thursdays and Saturdays at 8 a.m., calling at the Ports of North Nipissing at 12.50 p.m., Sturgeon Falls at 4 p.m. Returning leave Sturgeon Falls at 8 a.m., on Mondays, Wednesdays and Fridays, calling at North Nipissing at 11 a.m., arrive at Mattawa at 3 p.m.

STEAMBOAT ARRANGEMENTS.

Daily Summer arrangements taking effect on Monday 16th July 1883

GOING NORTH.

The popular low pressure Side Wheel Steamer "NIPISSING" (CAPT. ROSE) will leave Gravenhurst daily on the arrival of the Mall Trains leaving Toronto at 7.45 a. m., and Hamilton at 6.45 a. m., for Bracebridge, Beauvais, Port Carling, Windermere and Rosseau direct. The hull of the above named Steamer was thoroughly overhauled last winter, and her engine power increased.

The fast, new and comfortable Steamer "KENOZHA," (CAPT. HENRY) will leave at the same time for Port Carling, Port Sandfield, Port Cockburn and intermediate ports. The above named Steamer has just been specially built for the above route, and has proved a success.

The "WENONAH" (CAPT. REIDE) will leave Gravenhurst every evening at 6.15 p. m. for Bracebridge on arrival of the Train leaving Toronto at 11.55 a. m.

GOING SOUTH.

The "NIPISSING" will leave Rosseau at 7.30 a. m., for Gravenhurst and intermediate places. The "KENOZHA" will leave Port Cockburn at 7.30 for Bracebridge, Gravenhurst and intermediate ports. The "WENONAH" will leave Bracebridge for Gravenhurst at 4.30 a. m.

BALA ROUTE.

The "WENONAH" will leave Gravenhurst at 7 a. m. for Walker Point, Point Kaye, Torrance and Bala.

LAKE NIPISSING ROUTE.

The Steamer "INTER-OCEAN" (CAPT. BURRITT) will leave Nipissing every *Tuesday, Thursday and Saturday* at 7 a. m. for North Nipissing and Sturgeon Falls connecting with C. P. R. trains at both places on *Tuesdays and Saturdays* to Wissawasa and Callendar.



Hotels

BRAC
here, four
to their
the very
contains
&c., boat

BEAU
Hotel, a

POB
etores, b
is a good
which t
Penson,
will rec

WIN
modate

ROS
place fo
guides,
and arr

JUD
Saturda

CLE
post-m

GRE
near th

POB
The Pr
about 6

POB
night)-
charm

BAL
Saturd
View
tourist

NIP
tains
respect

CAR
Saturd
for gu

NOI
Traus
by Mr

STU
Train
J. M.

Dr.
princ
shoul

Hotels, Boarding Houses and Miscellaneous,

On the Muskoka and Nipissing Navigation Co. Route.

BRACEBRIDGE (TWICE DAILY BOATS)—The Hotels here, four in number, can accommodate about 100 guests in addition to their ordinary business. It is a good starting point for some of the very best fishing and shooting localities of the Muskoka region, contains a large number of good stores, stage lines, livery stables, &c., boats to hire, &c.

BEAUMARIS (DAILY BOAT)—Commodious new summer Hotel, apply to E. Prowse, Beaumaris, P. O.

PORT CARLING (DAILY BOAT)—Contains two Hotels, good stores, boats to hire; private boarding houses, in the vicinity, and is a good central point for tourists, either to remain in or from which to form other plans. Correspondence with Messrs. R. G. Penson, W. H. Foreman, John Fraser, Mr. B. A. Arkay and others will receive prompt attention.

WINDERNERE (DAILY BOAT)—Thos. Aitken can accommodate about 35 guests.

ROSSEAU (DAILY BOAT AND STAGES)—The leading place for fine Hotels, good accommodation, &c., plenty of boats, guides, fishing tackle, prices and accommodation here is graded and arranged to suit the circumstances of all.

JUDDHAVEN (SEMI-WEEKLY BOAT)—on Tuesdays and Saturdays from Rosseau, Mr. Lawson can accommodate a few guests.

CLEVELANDS (DAILY BOAT ON SIGNAL)—C. J. Minett, post-master, can accommodate about 25 guests.

GREGORY (DAILY BOAT ON SIGNAL)—Mrs. O. Walls, near this place, can accommodate about 40 guests.

PORT SANDFIELD (DAILY BOAT NORTH AND SOUTH)—The Prospect House by E. Cox, expects to be able to accommodate about 60 guests.

PORT COCKBURN (Good Daily Boat remaining here over night)—The popular Summit House by H. Fraser as formerly, charming sheet of water here.

BALA (TRI-WEEKLY BOAT on Tuesdays, Thursdays and Saturdays)—Guests can be accommodated at Mr. H. C. Guy, River View Temperance House. This is a splendid locality for the tourist and sportsman.

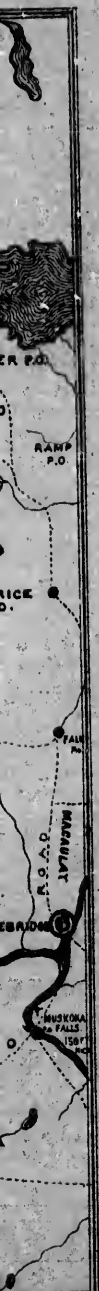
NIPISSING (TRI-WEEKLY BOATS AND STAGES)—Contains two licensed Hotels by Messrs. Gibson and McNamara respectively. Good fishing.

CALLENDER (SEMI-WEEKLY BOAT on Tuesdays and Saturdays)—Mr. George Morrison can furnish good accommodation for guests, also boats, &c. The fishing is excellent here.

NORTH NIPISSING (TRI-WEEKLY BOATS and Railway Trains on Tuesdays, Thursdays and Saturdays)—Boarding Houses, by Mr. McFarlane and also by Mrs. Snider. Good fishing.

STURGEON FALLS (TRI-WEEKLY BOAT and Railway Trains)—Temperance Hotels and Boarding Houses by E. Gorby, J. M. Scott, Wm. Joice, and Mr. Foy. Good fishing and boating.

Dr. Wm. Redmond, Lic. Col. Phy., London, Eng., will visit the principal resorts during the tourist season, and will be available should his services be required. Address Rosseau and Port Cockburn.



BRAC
Port Sy
route ;
to Bays

ROSS
Harbor,
Tri w
(thence
and Nip
OCEAN "

THE

Toronto

"
"
"
"
"

TOB
principle

HAM
railway

PORT
Midland

OTT
CHIC

J. A. L



STAGE CONNECTIONS.

BRACEBRIDGE—Daily (per John Harvie's Line of Stages) for Port Sydney, thence per Steamer "NORWEGIAN" on Huntsville route; Tri-weekly Stages, on Tuesdays, Thursdays and Saturdays to Baysville, thence per Steamer "HELENA."

ROSSEAU—Daily (per James Harvie's Line of Stages) to Parry Harbor, Parry Sound and intermediate places.

Tri weekly on *Tuesdays, Thursdays and Saturdays*, to Magnetawan, (thence per Steamer "PIONEER" on the Magnetawan River route) and Nipissing thence per staunch and commodious Steamer "INTER-OCEAN" for ports upon Lake Nipissing.

THROUGH RETURN TICKETS

(GOOD FOR AT LEAST 30 DAYS.)

Toronto and Hamilton to Bracebridge and return,	- -	\$5.25
" " Port Carling,	- -	5.50
" " Rosseau,	- -	6.00
" " Lake Joseph,	- -	6.50
" " all around the Lakes,	- -	7.25
" " return by Parry Sound and Collingwood,	- -	8.50
" " over Lake Nipissing and return,	-	15.00

To be had at the following places :

TORONTO—BARLOW CUMBERLAND, 35 Yonge st., and at all the principal stations of the Northern and North Western Railways.

HAMILTON—W. J. GRANT, 6 James st. North, and at principal railway stations.

PORT HOPE—Belleville, Lindsay and Peterboro. from the Midland railway agents.

OTTAWA—A. H. TAYLOR, Russell House Block.

CHICAGO, ILL.—D. B. LINNEN, No. 2 North Wells st.

J. A. LINTH, *Secy.*

A. P. COCKBURN, *Genl. Manager.*





A SCENE ON LAKE ROSSEAU.

SOUTH FALLS, MUSKOKA RIVER.

A SCENE ON LAKE ROSSEAU.



OTHER RESORTS TRIBUTARY
TO THE
Muskoka & Nipissing Navigation Company's
ROUTE,
Connected by Stage Lines, &c.

LAKE OF BAYS.

BAYSVILLE—Stages from Bracebridge on Tuesdays, Thursdays and Saturdays, Steamer Helena to all points upon Lake of Bays, splendid speckled trout fishing, hotels, stores, &c.

North Branch of Muskoka River.

HUNTSVILLE—Port Sydney, &c., daily stages from Bracebridge Steamer "Northern" daily upon Lakes Mary-Fairy and Vernon, good hotels, stores, &c.

MAGNETAWAN—Stages on Tuesdays, Thursdays and Saturdays from both Rosseau and Nipissing, Str. Pioneer, trip weekly to Burks Falls, Cowans, Fishers and Youngers landings and intermediate places, splendid Speckled Trout and Bass fishing, hotels, stores, both here and at Burks Falls.

CAMPING-OUT
FACILITIES.

The Muskoka Magnetawan and Nipissing Lake and River regions are unsurpassed in their adaptability for camping out, Camp necessities are procurable in convenient places at moderate prices, fresh provisions can always be obtained from the farmers at least along Lakes, Muskoka, Rosseau and Joseph, Mr. F. Forge of Windermere, and other farmers make a speciality of supplying camping parties with fresh provisions of all kinds.



