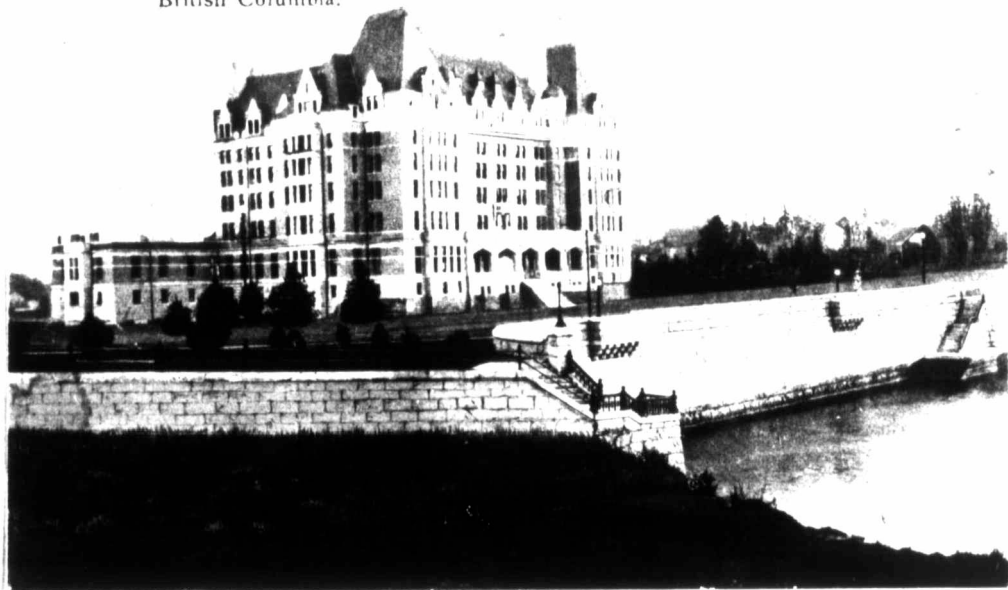


The New C.P.R. Empress Hotel, Victoria,  
British Columbia.



*Victoria the Capital*  
*City of British Columbia*



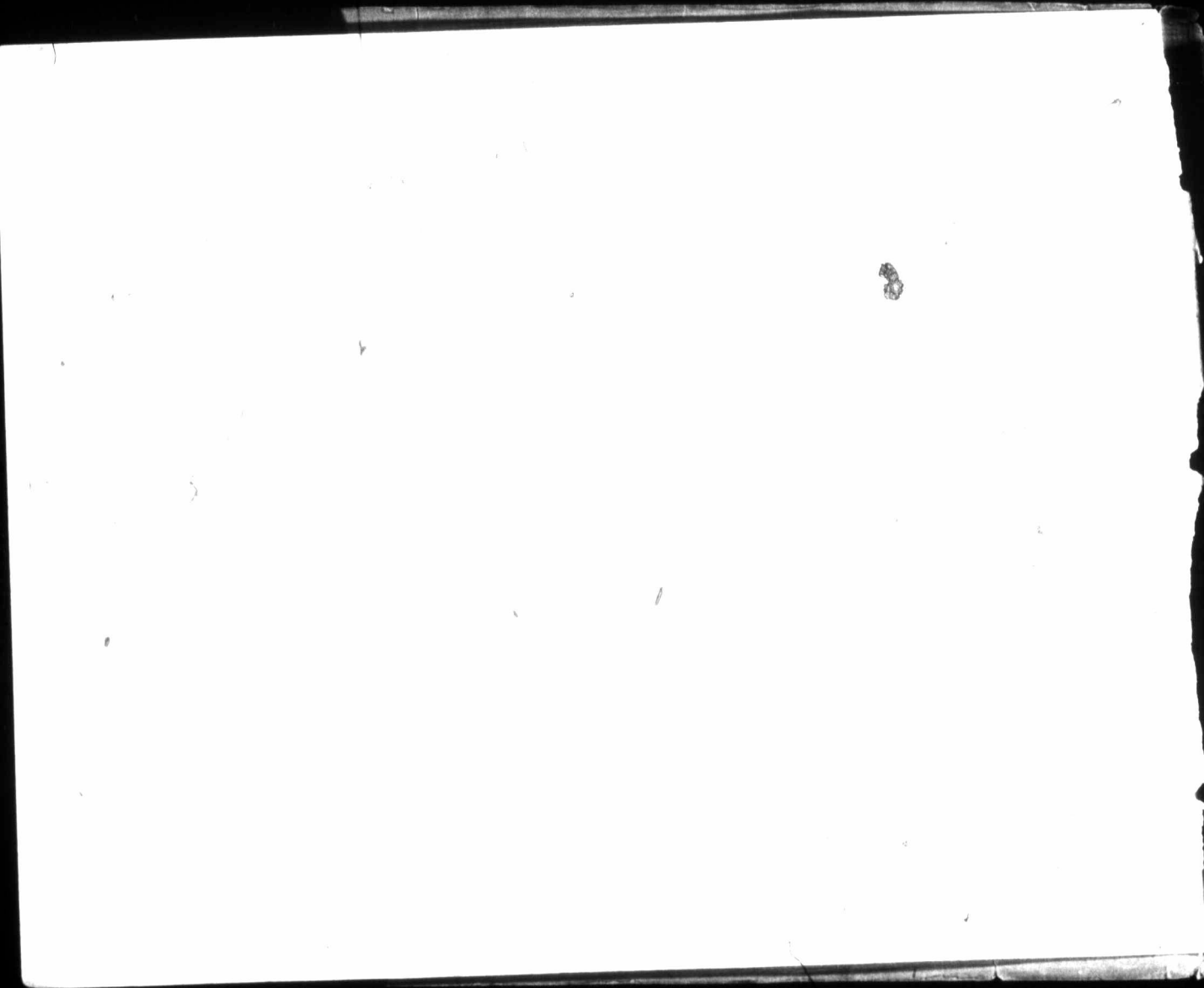
UNIVERSITY  
OF VICTORIA  
LIBRARY

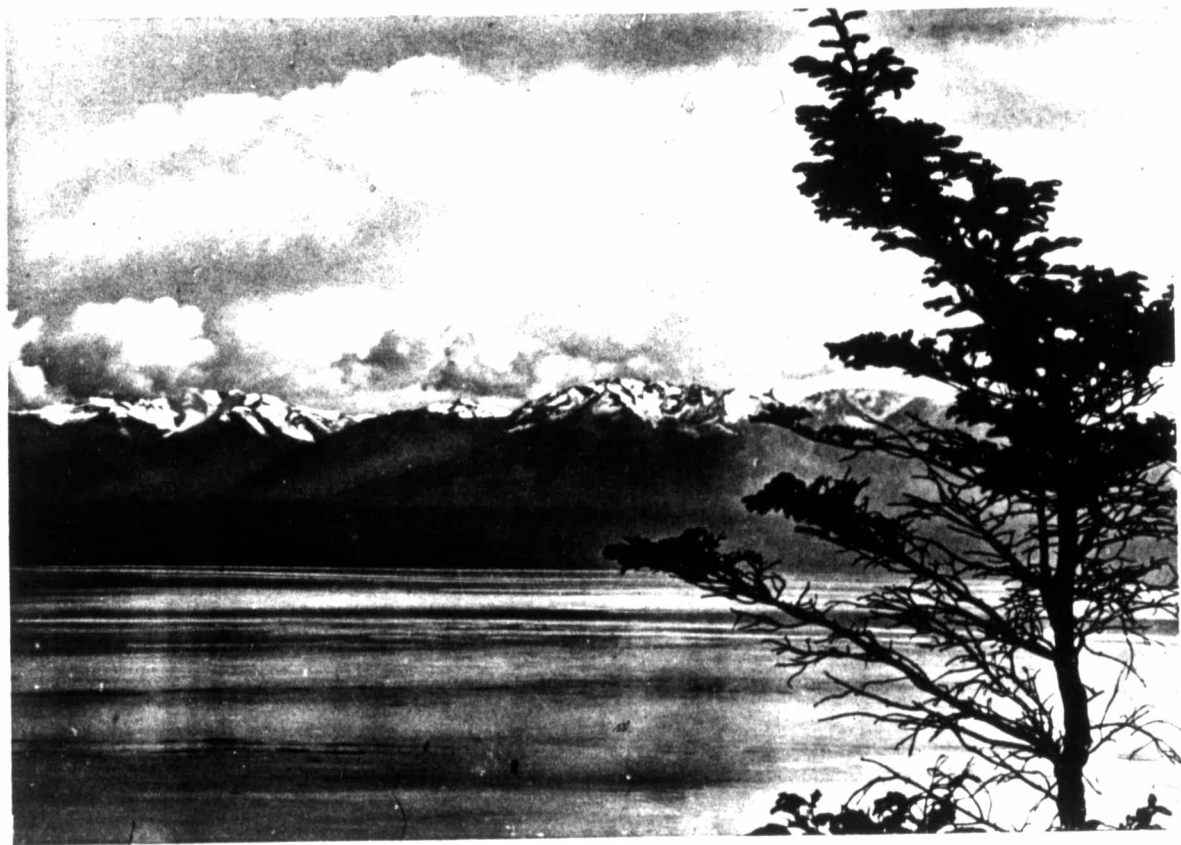
*Gift of*

1966

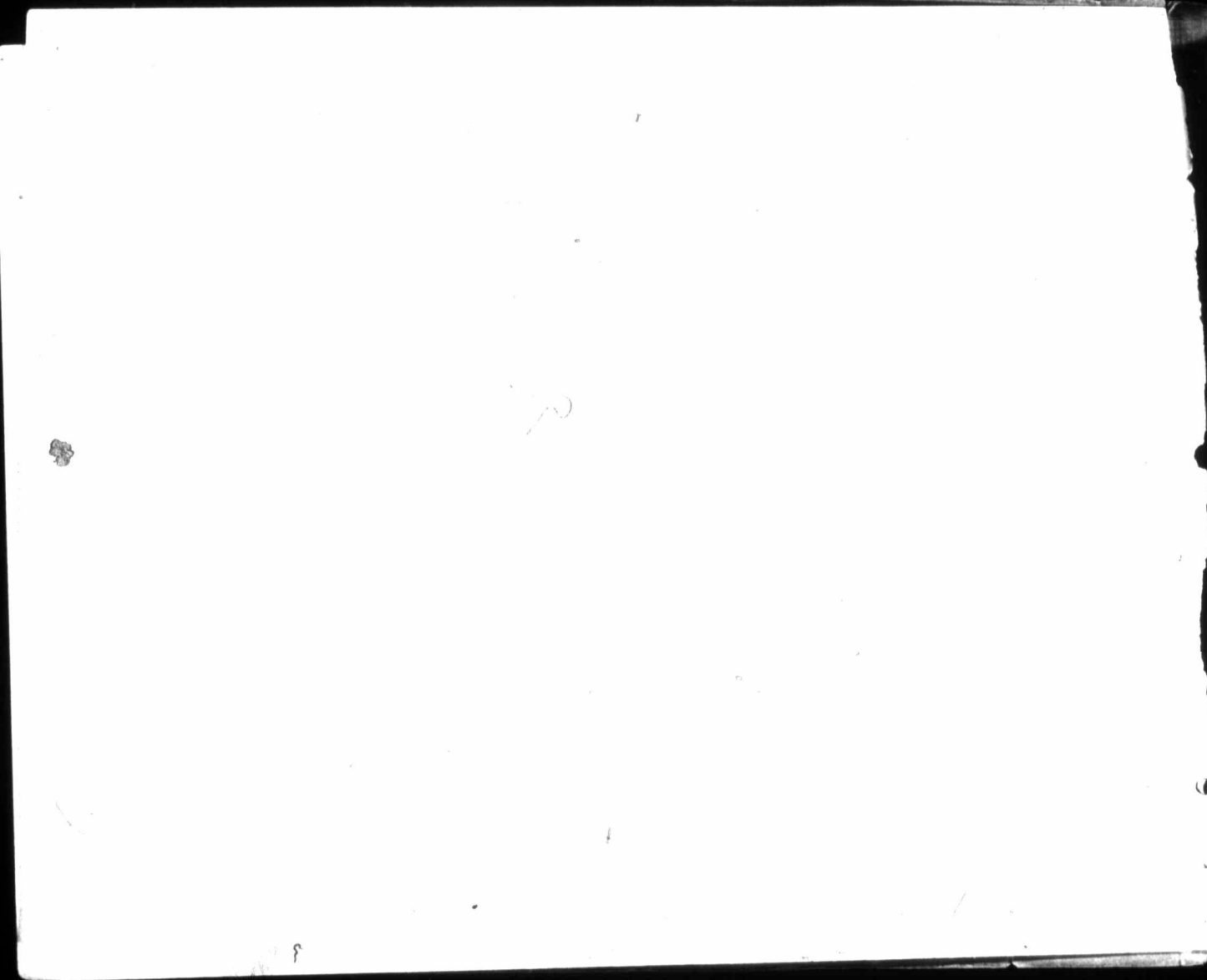


PROVINCIAL PARLIAMENT BUILDINGS, VICTORIA, B.C.



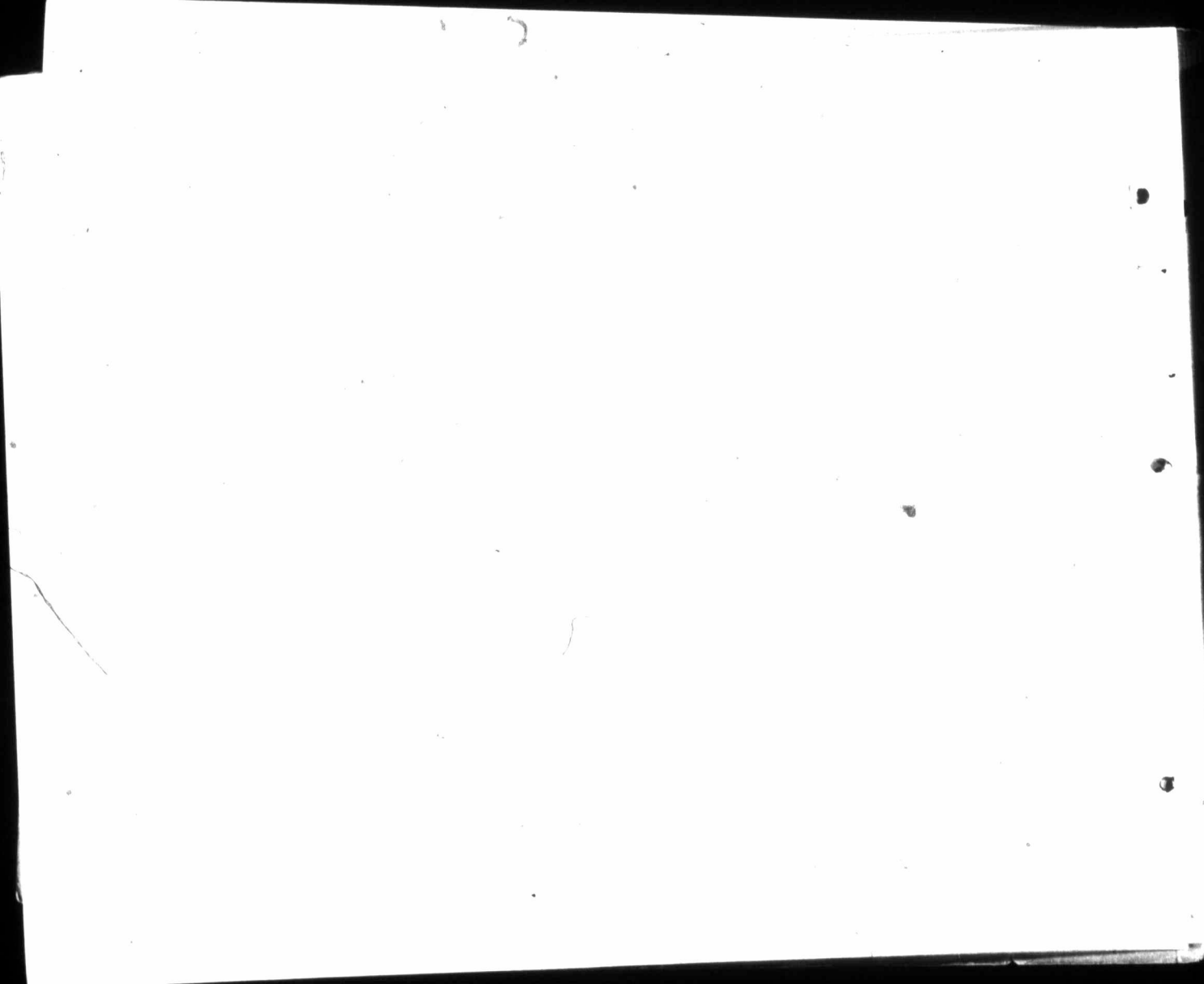


JUAN DE FUCA STRAITS, SHOWING THE OLYMPIC RANGE OF MOUNTAINS,  
FROM VICTORIA, B.C.





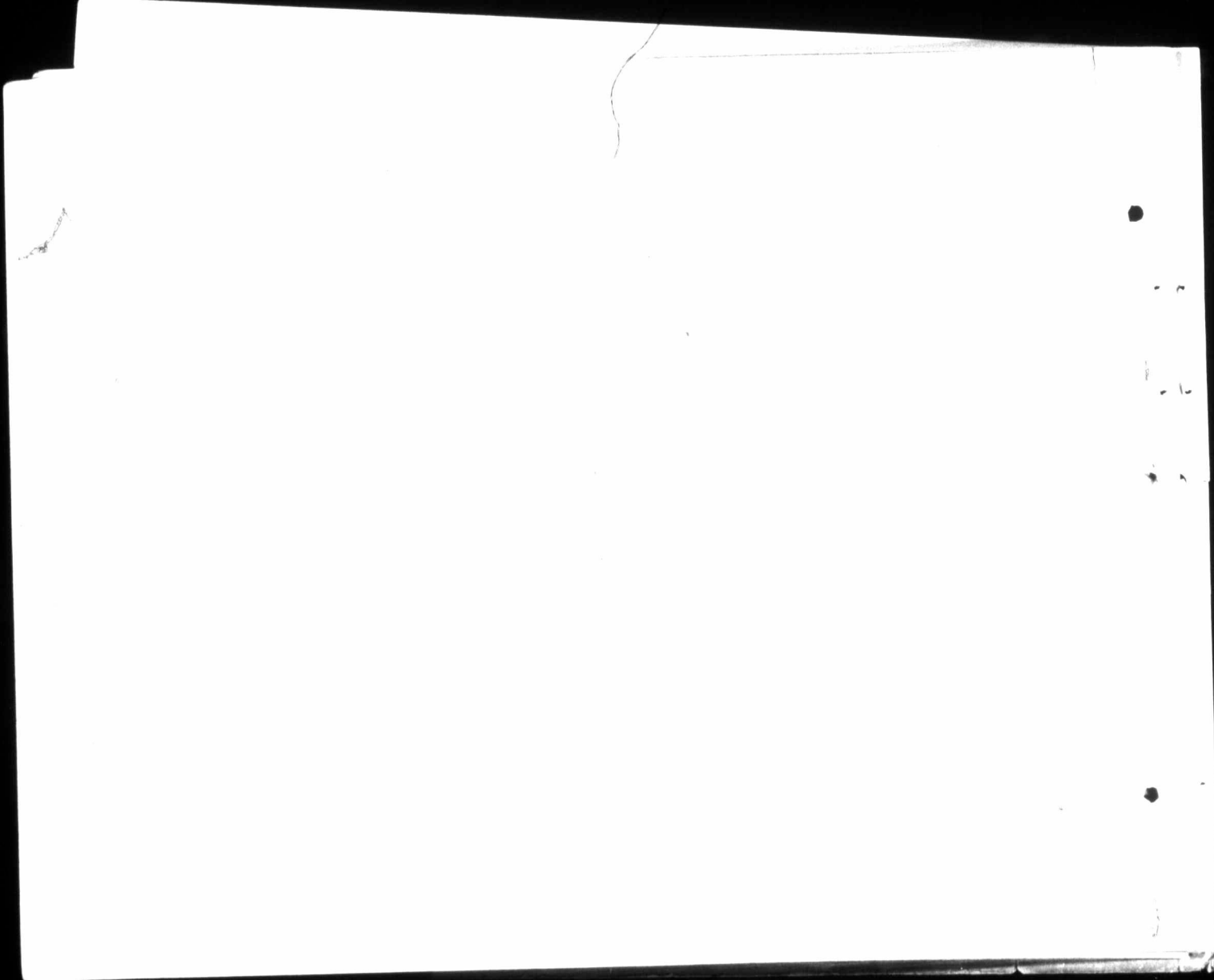
GOVERNMENT STREET, VICTORIA, B.C.







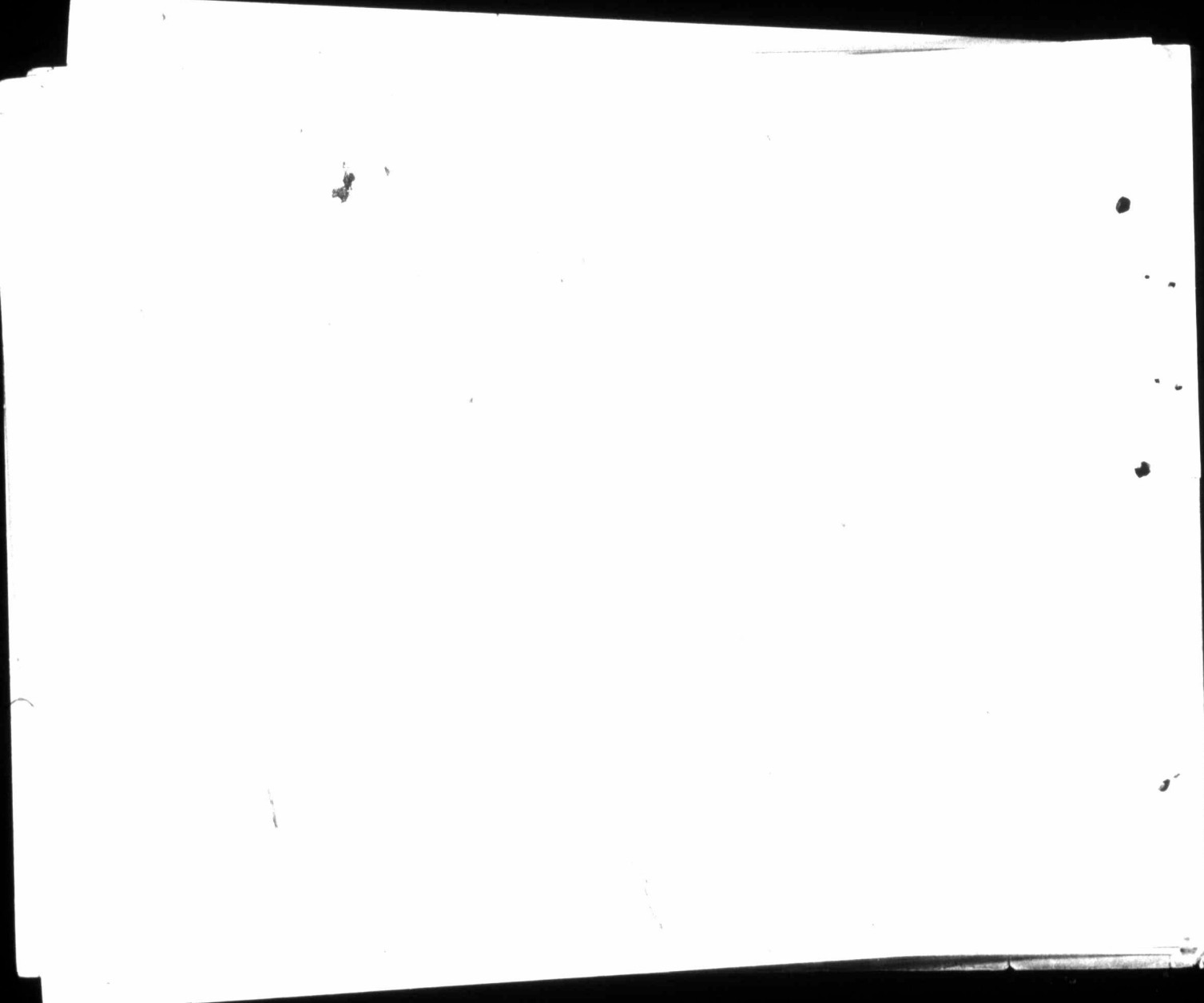
PROVINCIAL PARLIAMENT BUILDINGS, VICTORIA, B.C.

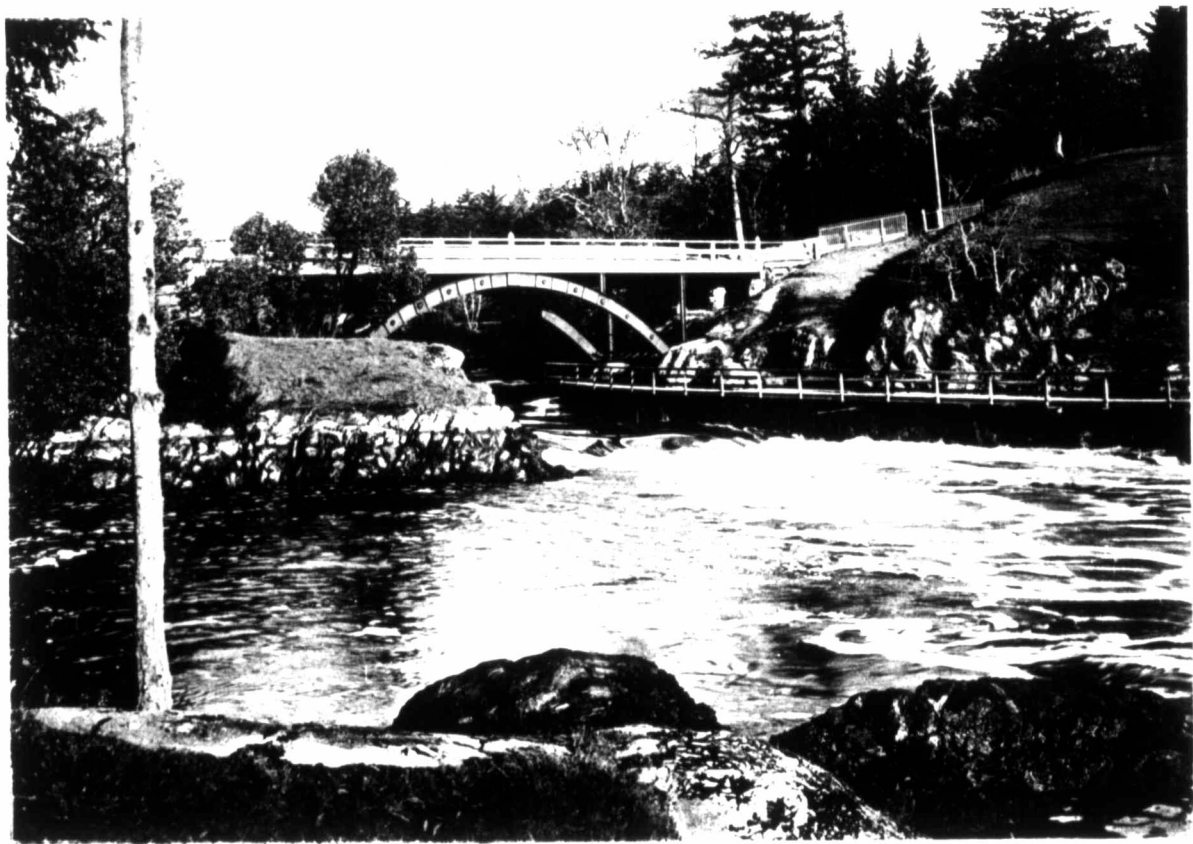




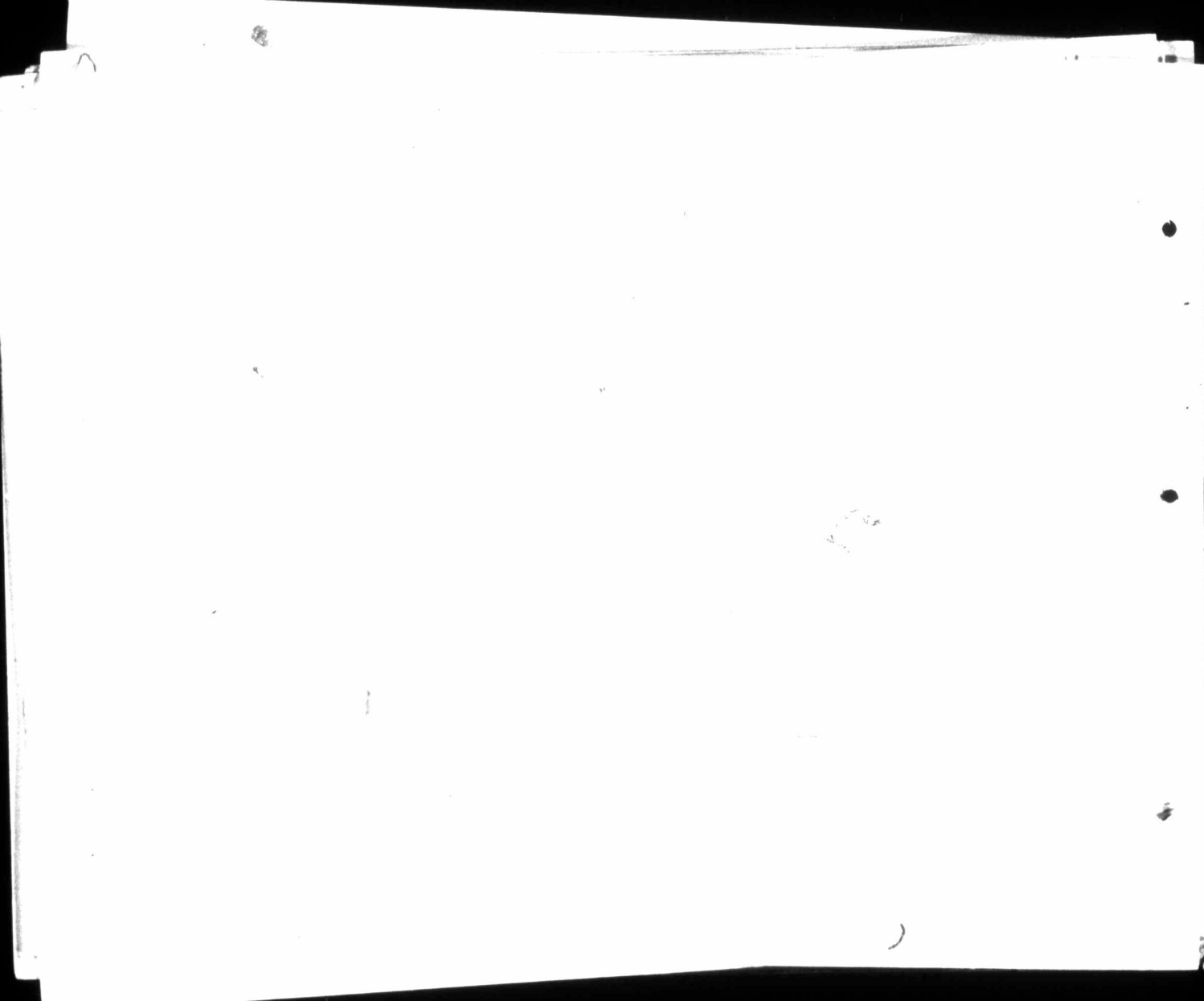
ENTRANCE TO HARBOUR, VICTORIA, B.C.

*By permission of FLEMING BROS.*





THE "GORGE," VICTORIA, B.C.





STRAITS OF JUAN DE FUCA AND OLYMPIC RANGE, FROM VICTORIA.

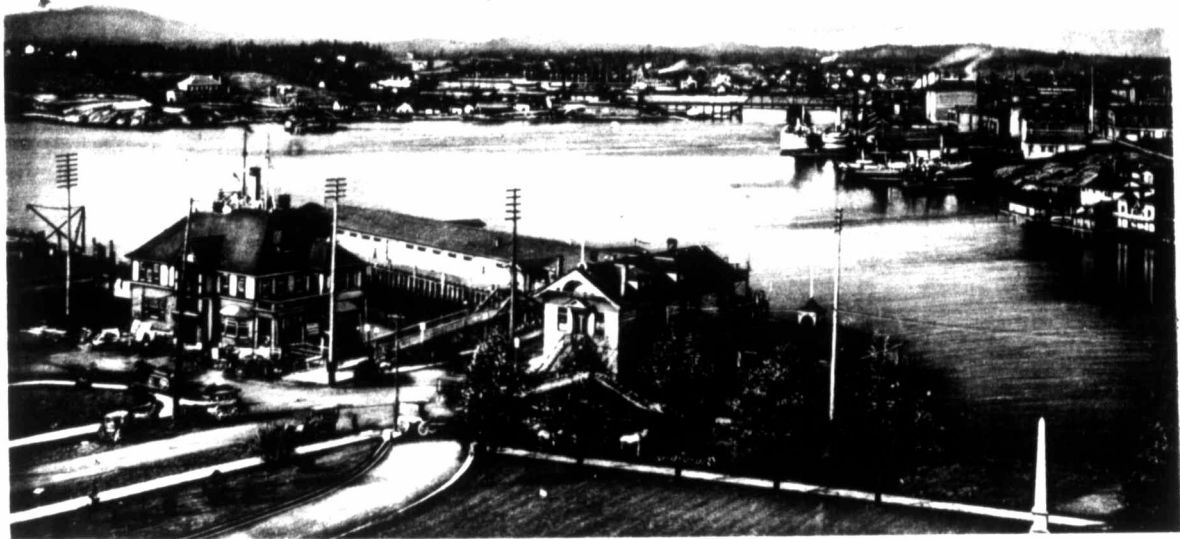


CADBORO BAY BEACH.

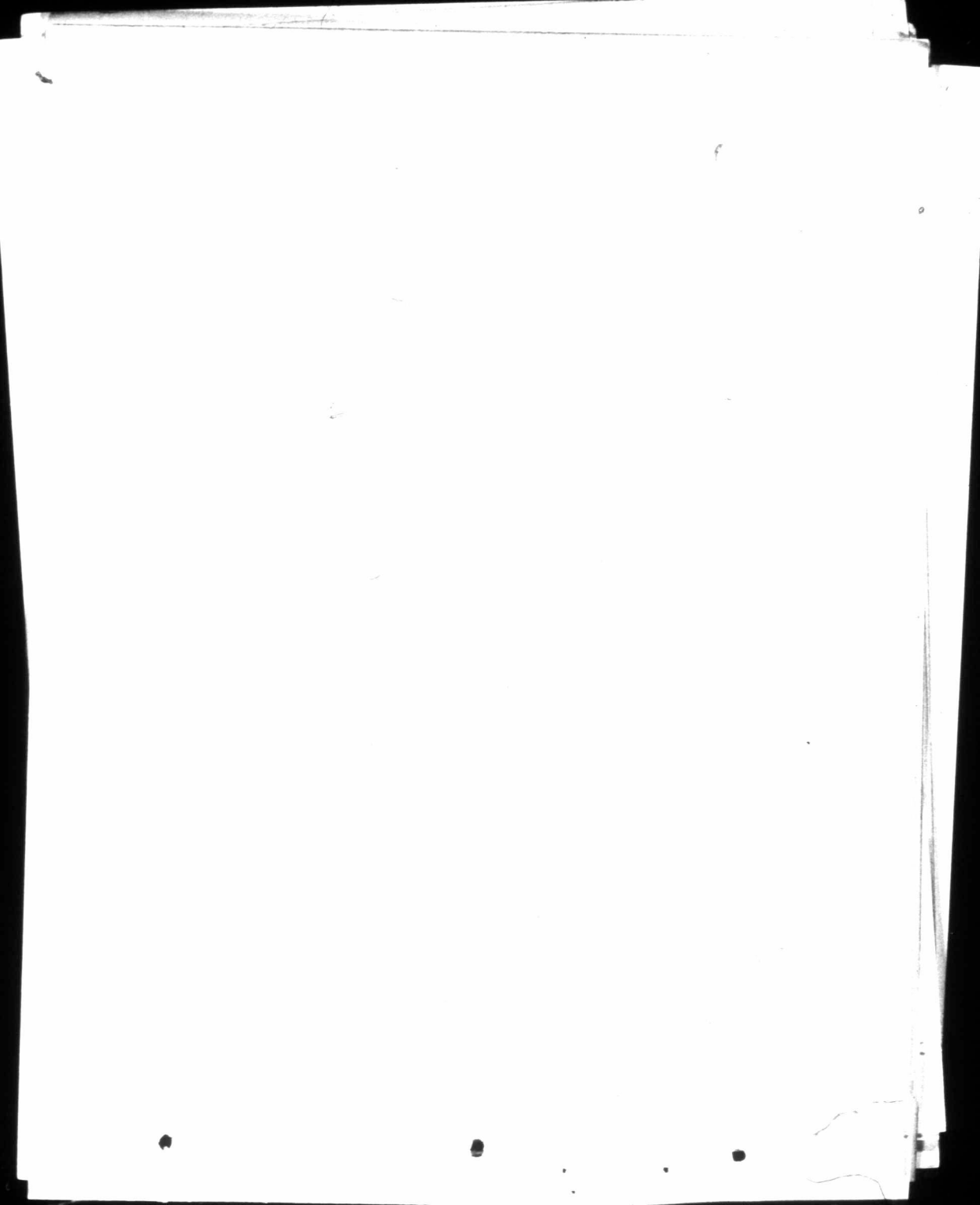
By permission of C. F. Clarke.

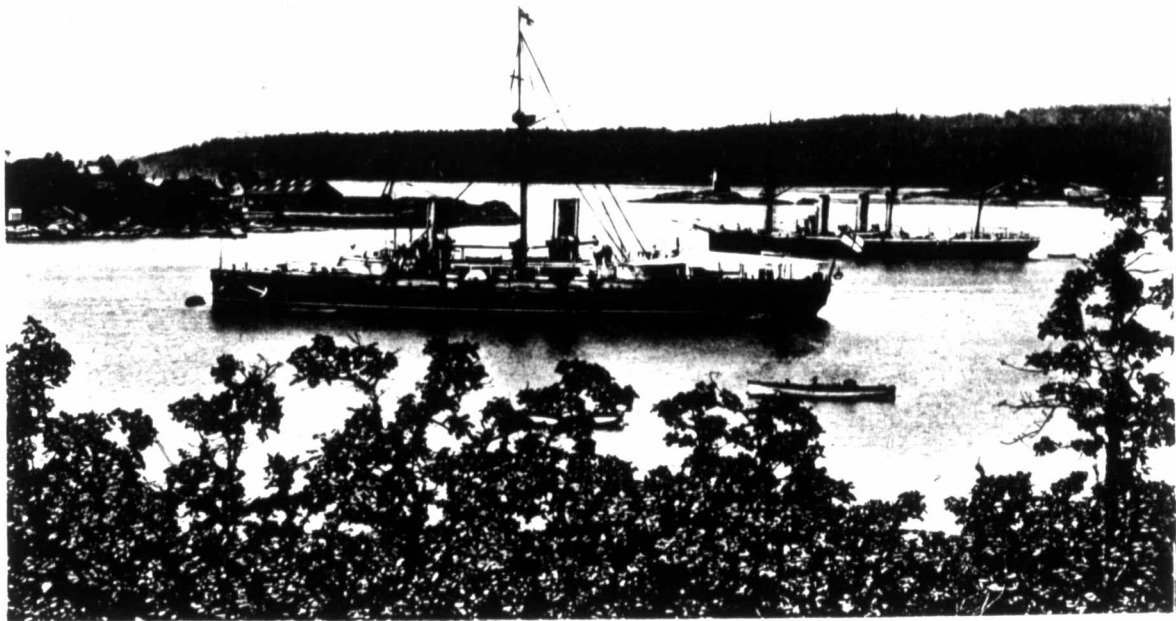
2





CANADIAN PACIFIC WHARVES AND OFFICES, AND INNER HARBOUR,  
VICTORIA, B.C.





ESQUIMAULT, THE NAVAL STATION NEAR VICTORIA, B.C.,  
SHOWING HIS MAJESTY'S FLEET.

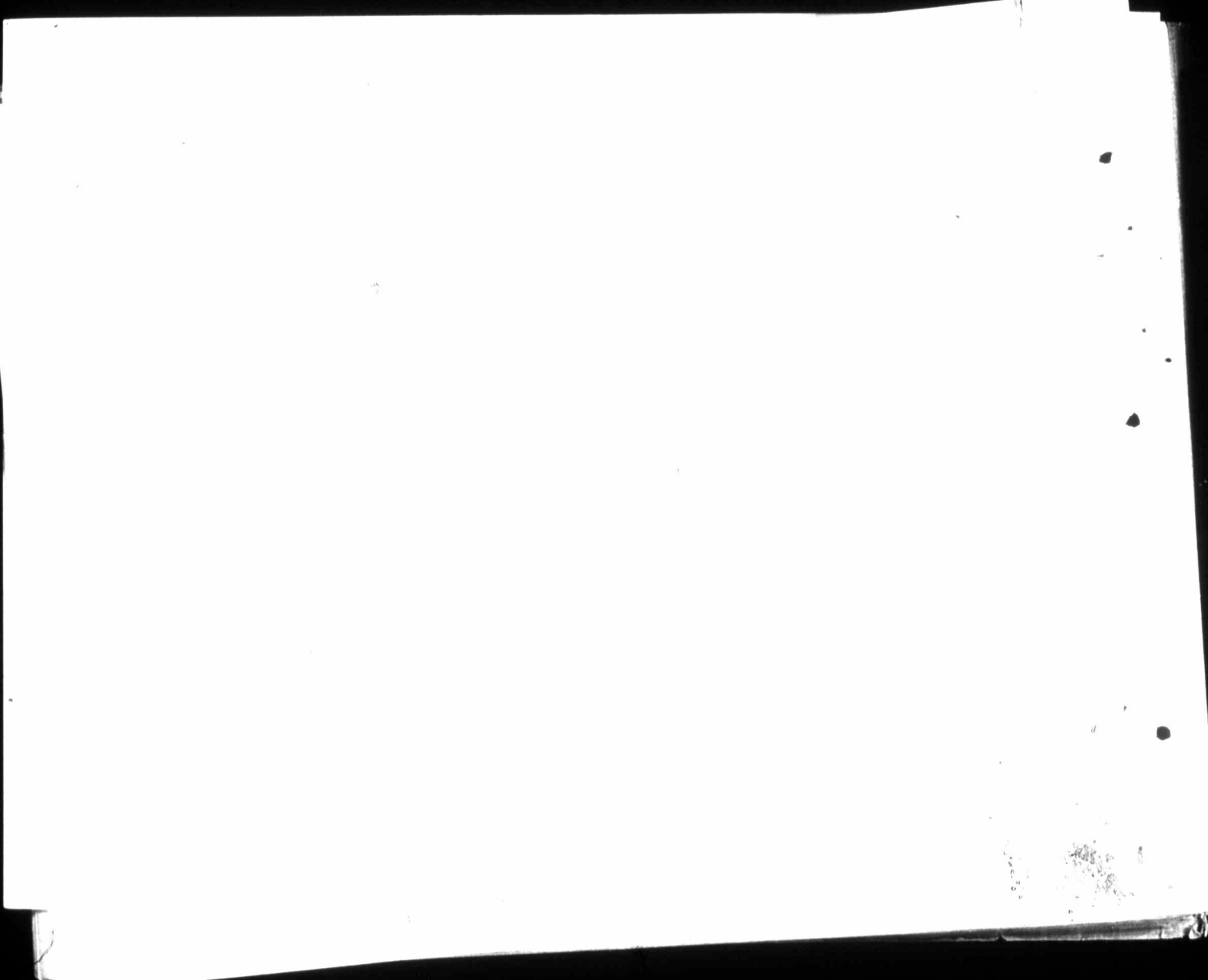
*By permission of FLEMING BROS.*







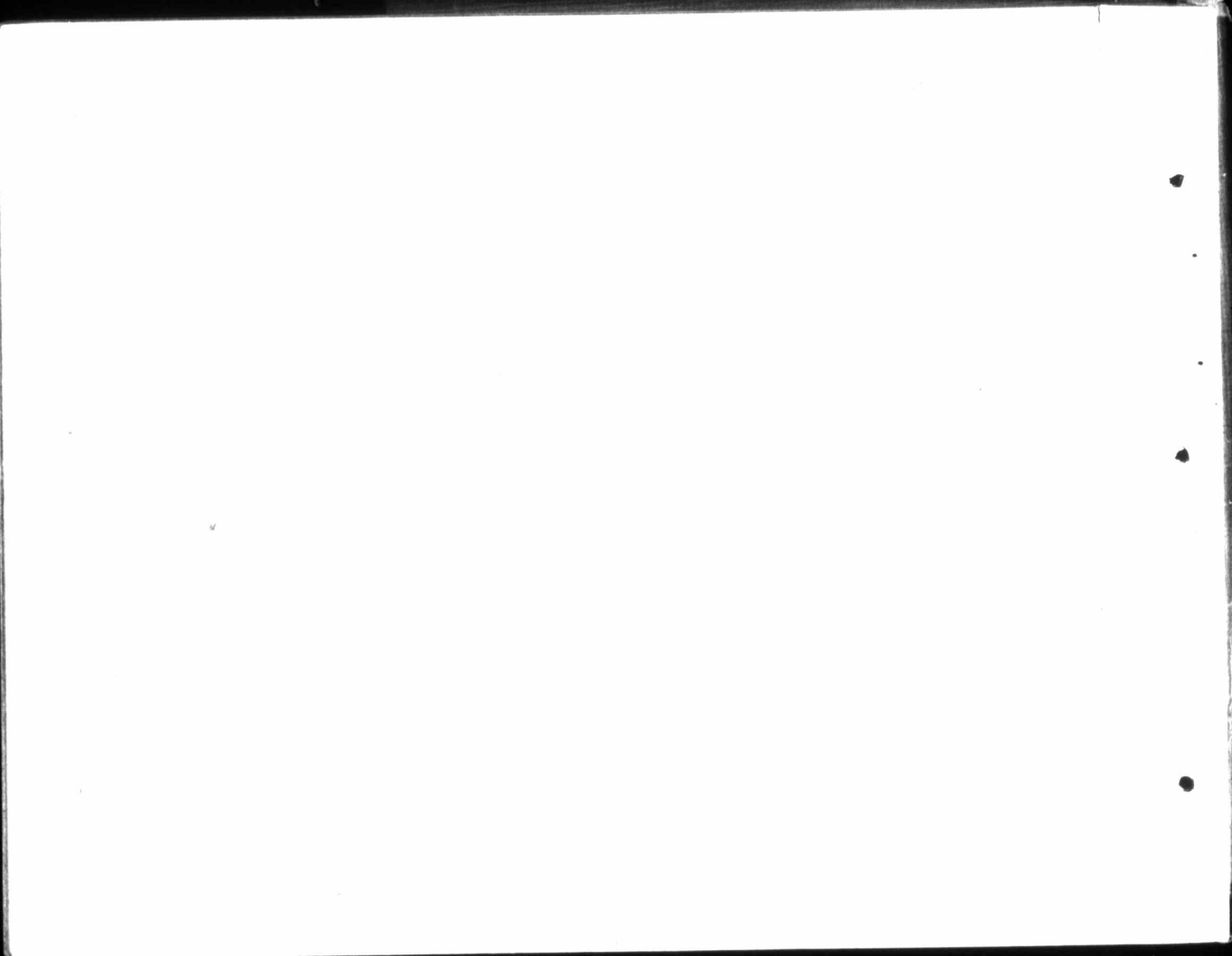
THE NEW CARNEGIE LIBRARY, VICTORIA, B.C.





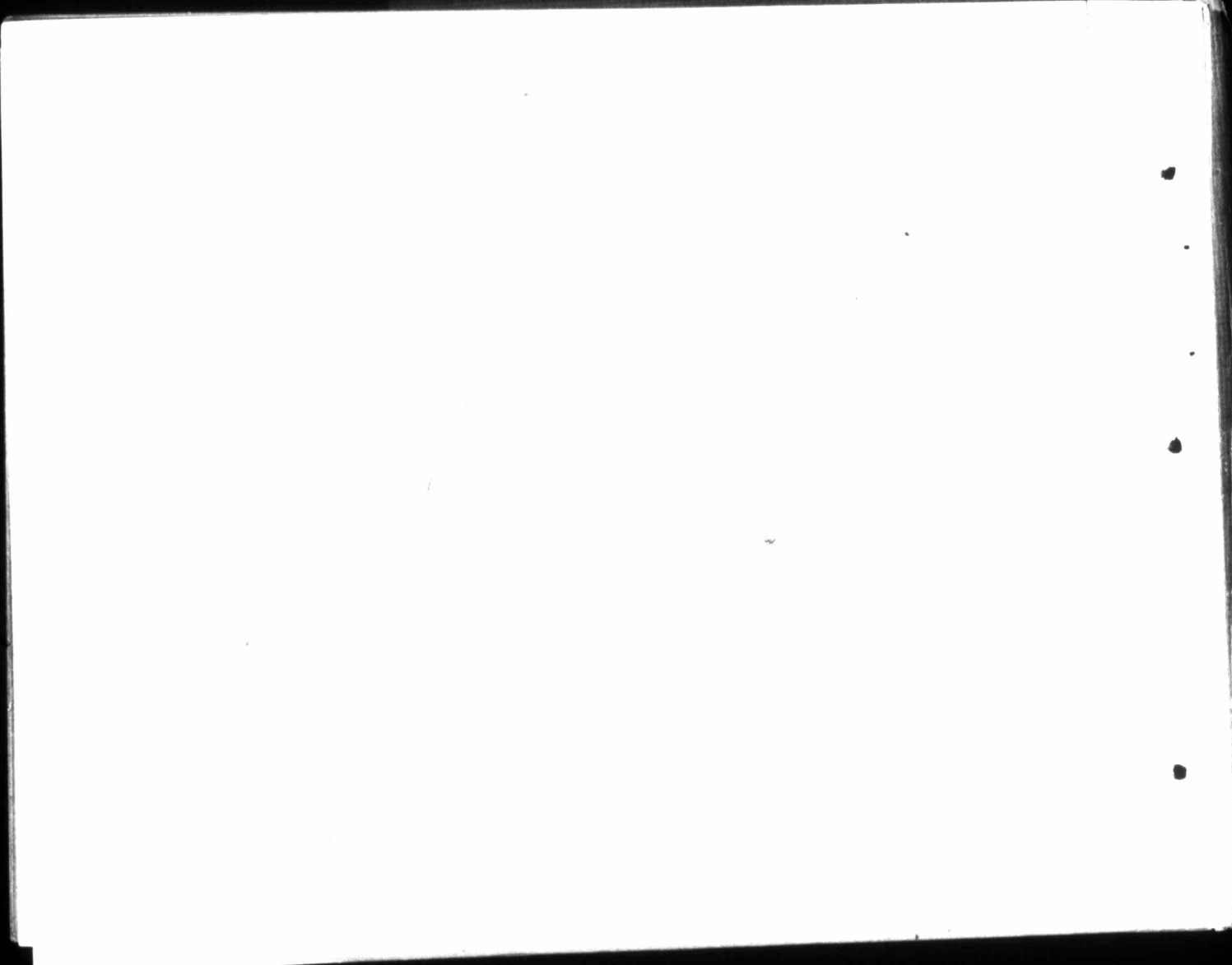
PROVINCIAL ROYAL JUBILEE HOSPITAL, VICTORIA, B.C.





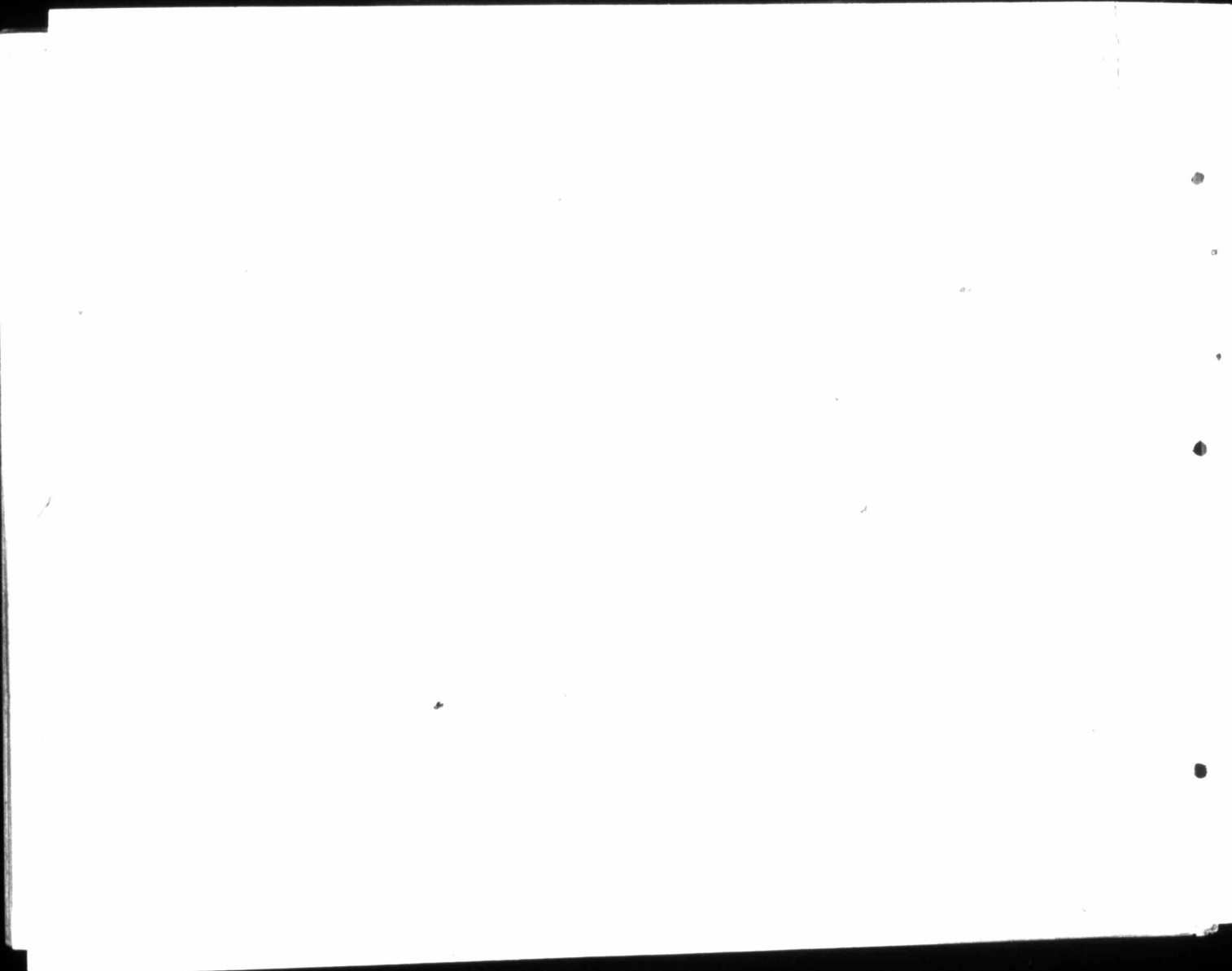


MOUNT BAKER, FROM OAK BAY, VICTORIA, B.C.



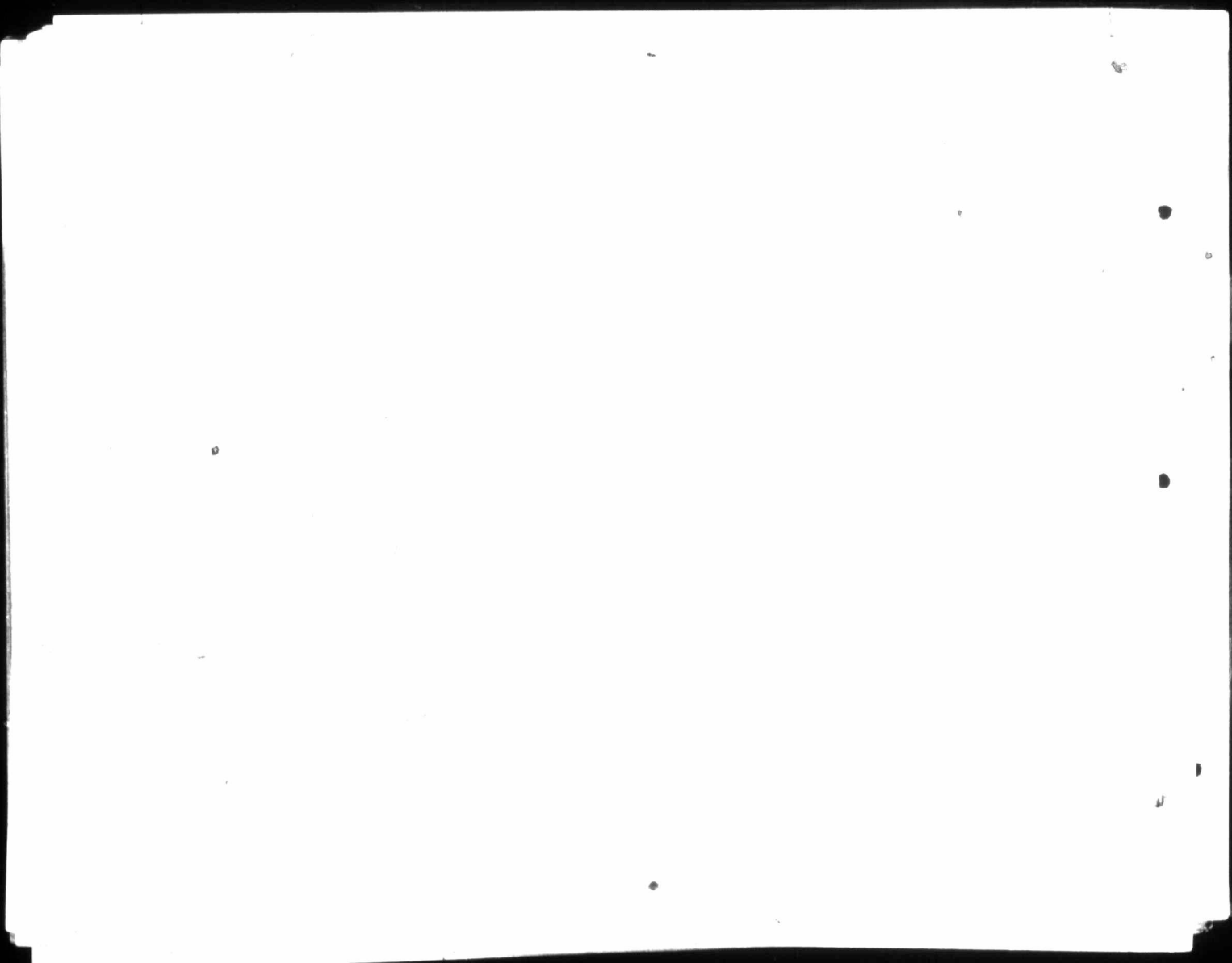
ABOVE THE "GORGE" NEAR VICTORIA, B.C.







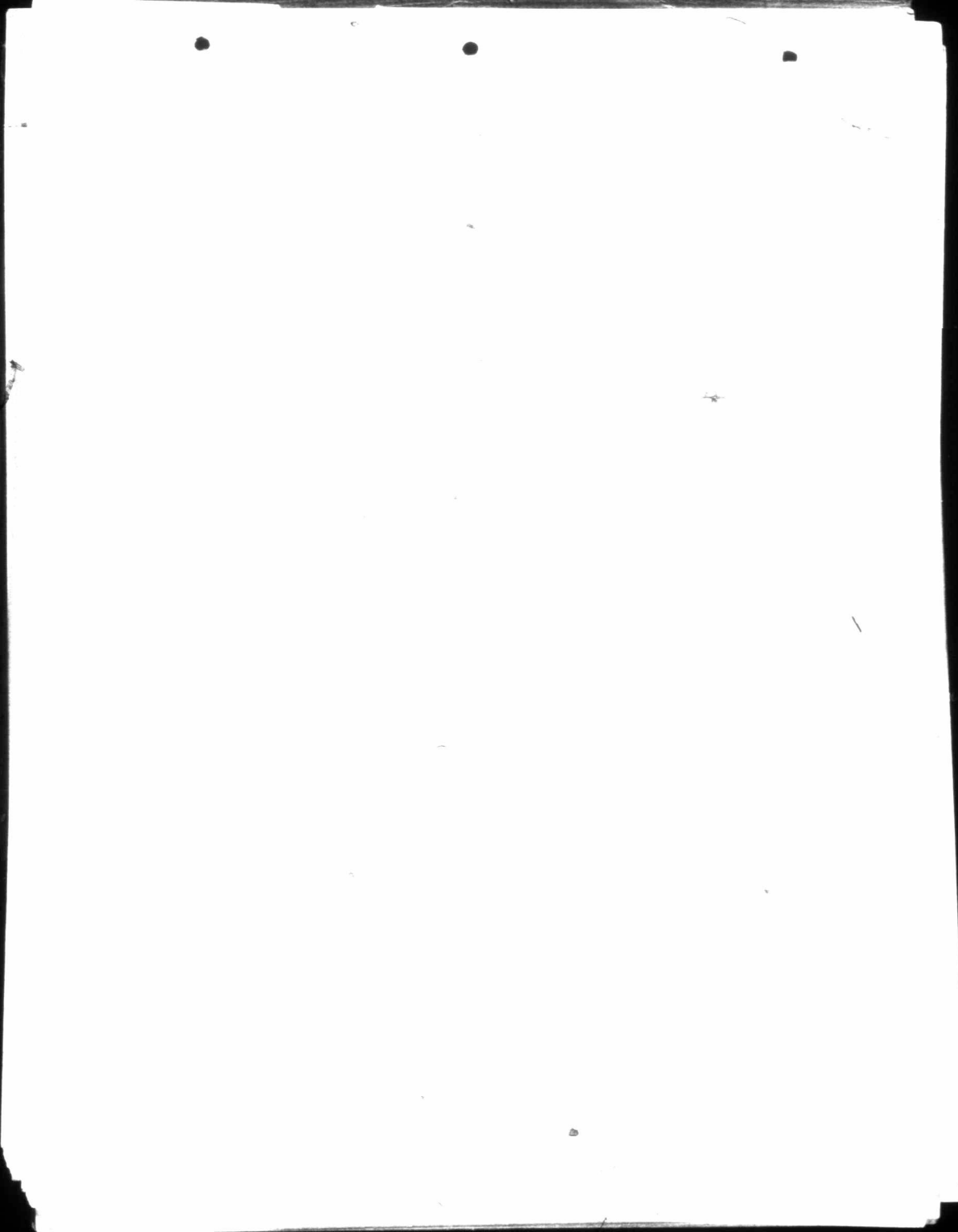
FOUL BAY, NEAR VICTORIA, B.C.





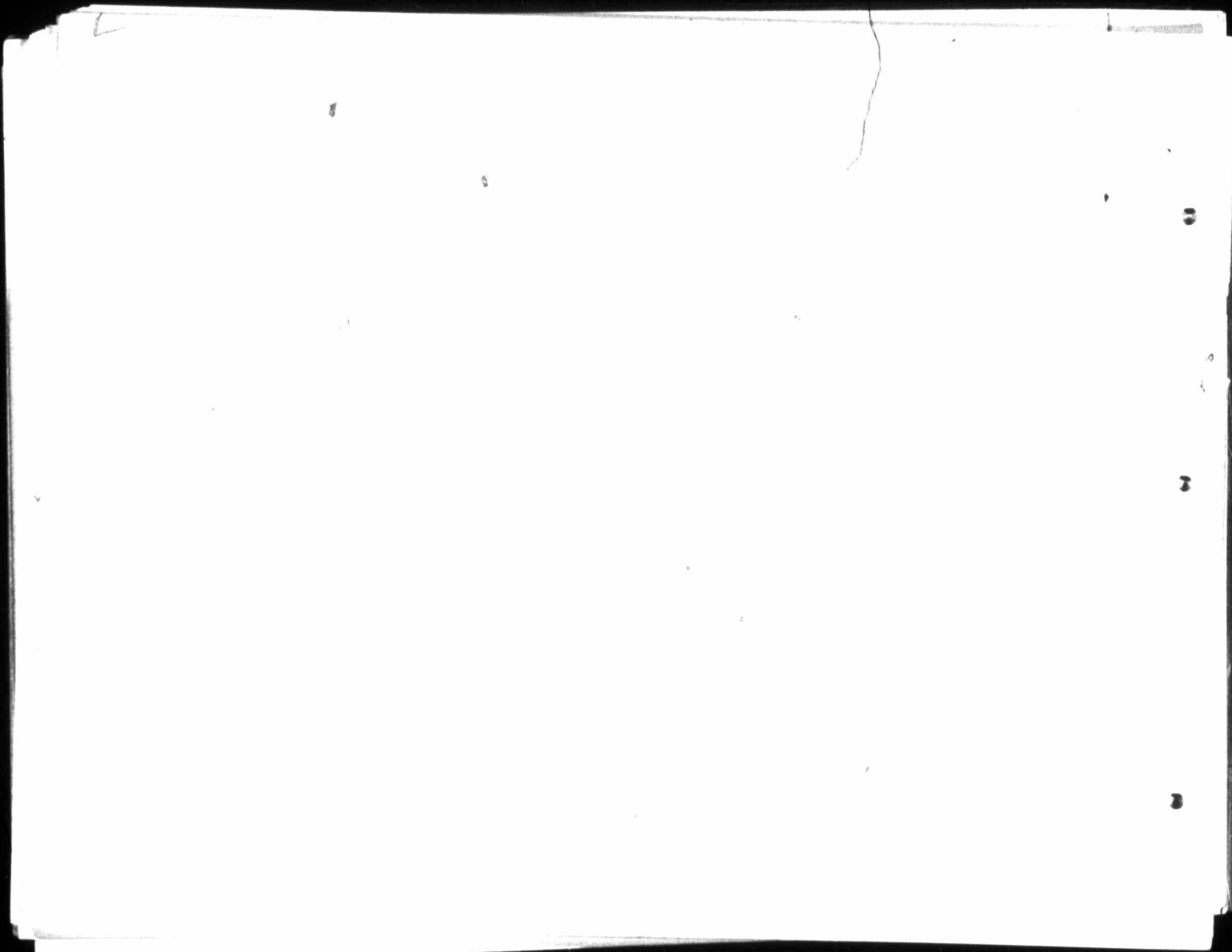
GOVERNMENT HOUSE, THE OFFICIAL RESIDENCE OF THE LIEUT.-GOVERNOR  
OF BRITISH COLUMBIA, VICTORIA, B.C.





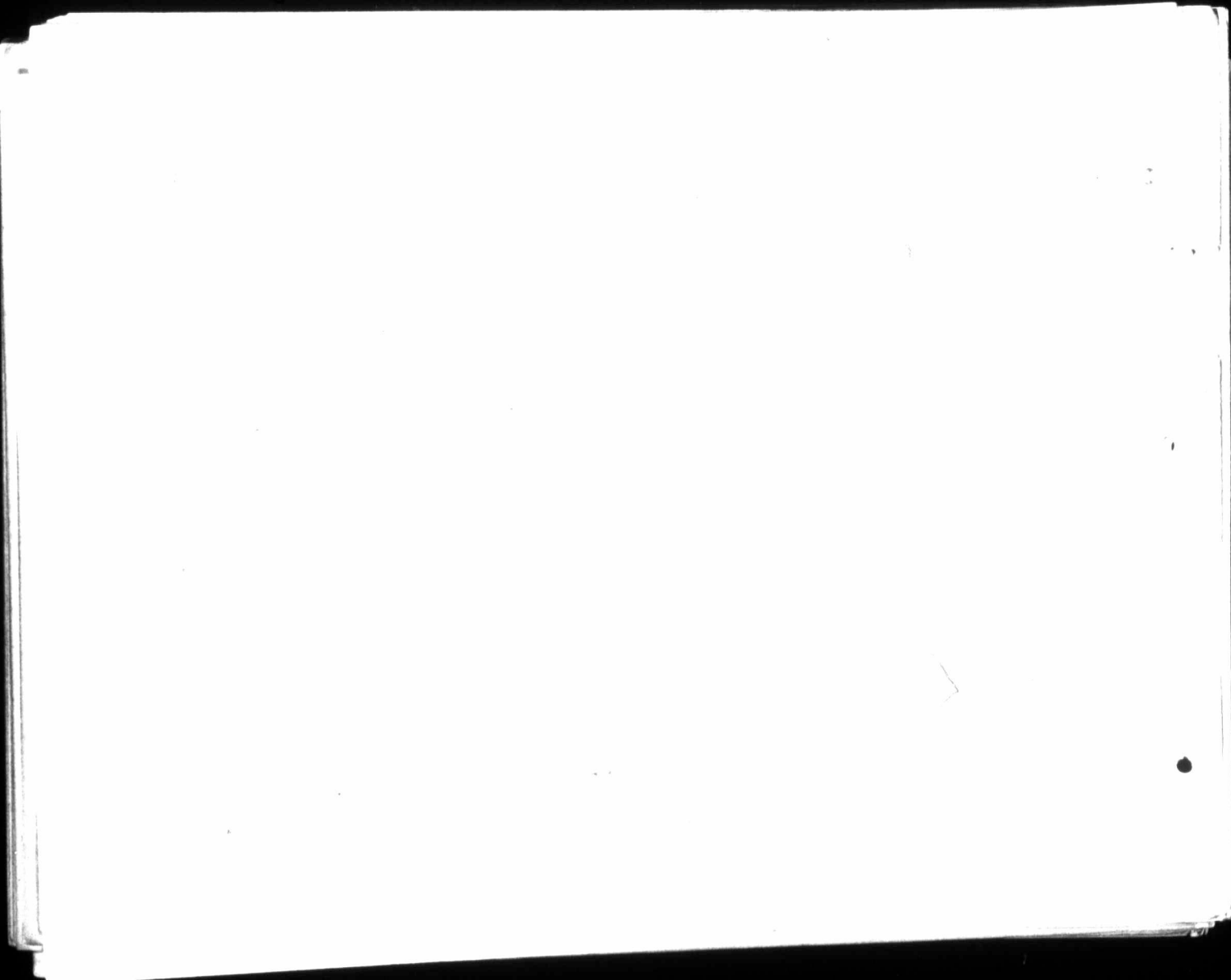


VIEW OF LAKE AND BRIDGE IN BEACON HILL PARK, VICTORIA, B.C.



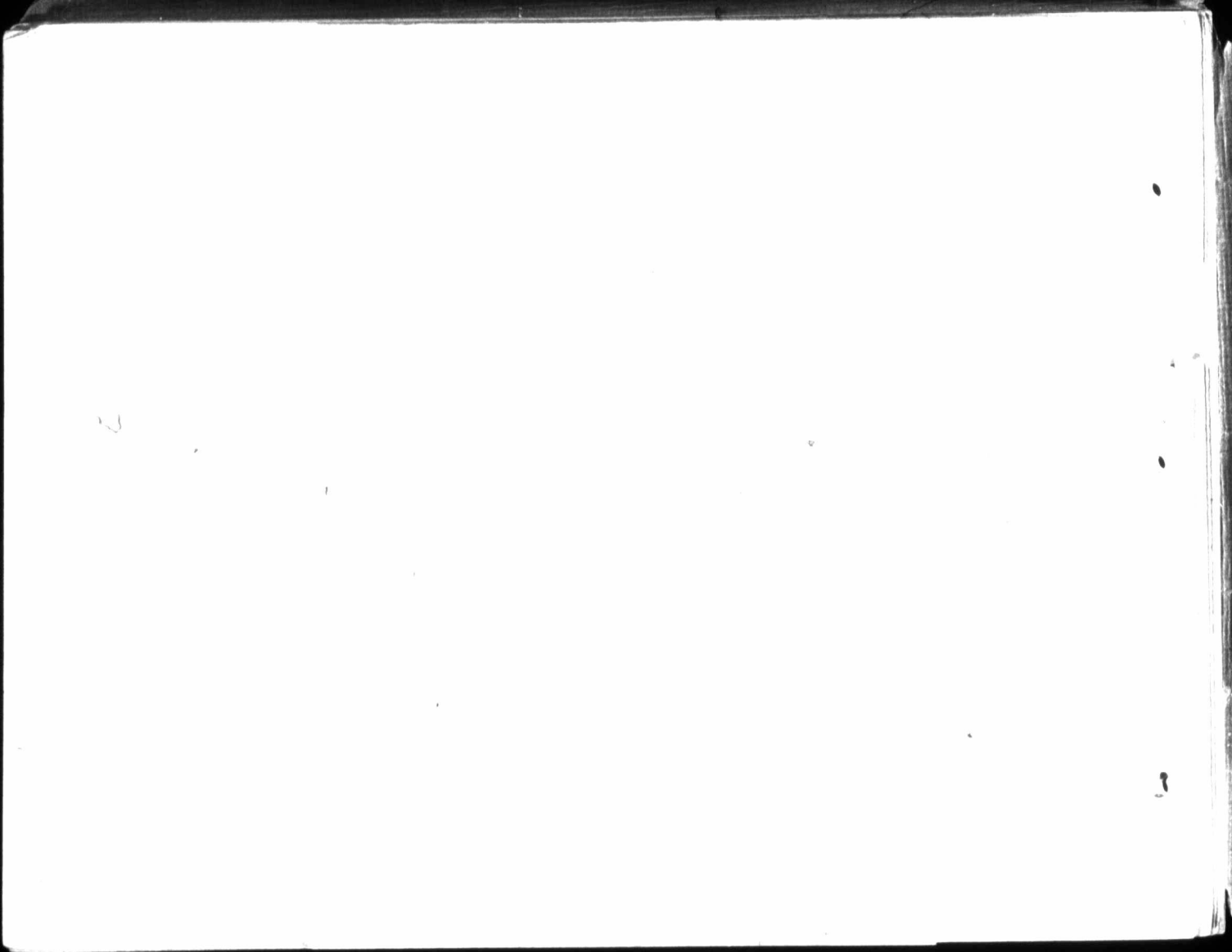


OUTER WHARF, VICTORIA, B.C.





PANORAMIC VIEW OF VICTORIA, BRITISH COLUMBIA, SHOWING THE PROVINCIAL PARLIAMENT BUILDINGS, THE NEW CANADIAN PACIFIC HOTEL, "THE EMPRESS," THE DOMINION POST OFFICE AND CUSTOM HOUSE, WITH THE C.P.R. "FLYER" S.S. "PRINCESS VICTORIA" LYING AT THE WHARF.



(sc)  
FC3846.67  
V55



