









pletely!

3rd Nov., 1911.

not fear, Messrs. of **Bosley's** **rip** for doors or w and dust. If etc., you will be

THE NORTH.

Hardware Dept., Pitts' Building.

G. KNOWLING.

ED!

opened make a test and most and fancy

TS

dren,

comparison of style, finish or in the city, the pur.

VLING.

FOUNDLAND COMPANY.

BAY SERVICE.

CLYDE"

Schedule. Passengers s to-day, Thursday, for ports of call on e Dame Bay.

land Company Neatly Executed.

### Ladies Blouses---\$1.35.



—Only 3 doz. of them.  
—Fine Cashmere.  
—Colors of Crimson, Cardinal, White, Saxe, Reseda, and V Rose.  
—Boxpleated and Shirred Fronts.  
—Tucked Cuffs and Collars.

Regular Value—\$1 65,

**Special—\$1.35 each.**

### Good Crockery Bargains.

Wine Glasses, assorted patterns. Reg. 17c. Friday 13c. each  
Fancy China Flower Pots. Reg. 95c. Friday 85c. each  
Fancy China Hot Water Kettles. Reg. 90c. Friday 78c. each  
Hot Water Jugs, Litho and Gold. Reg. 45c. Friday 40c. each  
Glass Salt and Pepper Shakers (glass tops). Reg. 10c. Friday 7c. each  
Hygienic Pudding Bowls, 1 pint. Reg. 15c. Friday 13c. each  
Plain White Earthen Spoons. Reg. 18c. Friday 15c. ea.  
Fancy Samian Teapots. Reg. 27c. Friday 24c. each

### Four Grocery Specials.

<b>CROSSE and BLACK WELLS PICKLES.</b> Reg. 35c. Friday 25c. bot.	<b>SUTTON'S HARVEY SAUCE.</b> Reg. 30c. Friday 20c. bot.	<b>KOLA TONIC WINE.</b> Reg. 75c. Friday 69c. bot.	<b>PURE GOLD JELLIES.</b> Reg. 12c. Friday 10c. pckt.
--	---	---	--

### Good Value in Ribbons.

370 yards of Double Faced Silk Ribbon, 6 inches wide; colors of Browns, Greens, Fawns, Amethyst, V. Rose and Blues. Reg. 45c. yard. Friday 15c  
700 yards of Taffeta Silk Ribbon, 6 inches wide; colors of Navy, Pink, Pale Blue, V. Rose, Prunelle, Helle, Royal, Crimson, Cardinal, Cream, White and Black. Reg. 25c. yard. Friday 19c

### Underwear Greatly Reduced.

LADIES' UNDERWEAR—5 doz. suits of La flos' Forest Mills fine quality Fleece Lined Underwear, Pants and Vests, necks finished with Silk and tanned. assorted sizes. Reg. 70c. garment. Friday 62c  
LADIES' NIGHTGOWNS—3 doz. of Ladies' Flannelette Nightgowns, colors of Pink and Cream; collars, cuffs and fronts trimmed with Silk Embroidery. Reg. \$2.20 each. Friday \$1.70  
LADIES' KNICKERS OR BLOOMERS—3 doz. pairs of Ladies' Jersey Knit Fleece Lined Knickers or Bloomers; colors of Brown, Saxe and Amethyst. Reg. \$1.10 pair. Friday 85c

### Mail Orders Filled.

<b>Rope Mats</b> Size 18 x 29 inches. Crimson border. Reg. 24c. Friday, 20c yard	<b>Imitation Saxony Flannel</b> 21 inches wide; special value. Reg. 18c. Friday, 15c yard
<b>White Twill Sheetting</b> 70 & 80 inches wide. Reg. 50c. Friday, 42c yard	<b>Circular Pillow Cotton</b> Fine Twill; 40 inches wide. Reg. 25c. Friday, 20c yard

# PRESENTING MANY OPPORTUNITIES FRIDAY!

## MILLINERY AND MANTLES.

Friday we shall offer many special values in Ladies' Millinery and Mantles. The Millinery are all this season's newest importations, and include all the newest colorings. Such values as \$3.50 and \$3.75 for \$2.75; \$5.00 and \$6.00 for \$4.25; \$6.50 and \$7.50 for \$5.50; \$10.00 and \$12.00 for \$8.50. The Mantles are mostly light weight, and include a big range of samples. The colors are Pink, Pale Blue, Navy, Crimson, Brown, Cream, etc. The prices range from \$2.50 to \$4.50. Friday all at half price. We expect some lively selling.

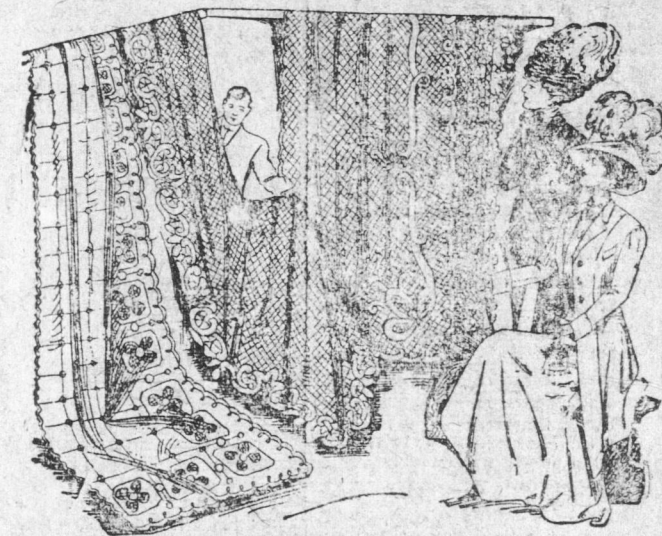
## RIPPING GREAT HARDWARE VALUES.

Wire Clothes Lines. Reg. 20c. Friday 18c. each	Clipper Can Openers. Reg. 18c. Friday 10c. each
Nickel Waiters, 2 handles; 18 inch. Reg. 95c. Friday 85c. each	Brass Fire Irons. Reg. \$4.25. Friday \$3.00 each
Bronze Waiters, 2 handles; 16 inch. Reg. 80c. Friday 71c. each	Enamel Spoons. Reg. 40c. Friday 33c. each
Scrub Brushes. Reg. 12c. Friday 10c. each	Egg Pouches. Reg. 17c. Friday 14c. each
Ironing Sleeve Boards. Reg. 18c. Friday 15c. each	Frotto-line Window Cleaner. Reg. 35c. Friday 30c. each
Aluminum Pie Pans. Reg. 40c. Friday 35c. each	Diamond Furniture Polish. Reg. 12c. Friday 10c. bot.
Whisks. Reg. 22c. Friday 18c. each	Cloth Brushes. Reg. 12c. Friday 10c. each
	Tea Infusers. Reg. 25c. Friday 20c. each

## Your Opportunity to Buy Lace Curtains.

We have given many special bargains in fine Lace Curtains, but Friday's List promises to beat all past records. If you'll need Curtains during the coming season, FRIDAY ought to prove a notable day of money-saving to you at The Royal Stores Limited.

LOT 1—40 pairs only of White Lace Curtains, 2 1/2 yards long; special job line. Values to 60c. Friday 42c pair.  
LOT 2—50 pairs of Nottingham Lace Curtains, size 2 3/4 yards long, White only; new patterns. Reg. \$1.00 pair. Friday 80c pair.  
LOT 3—20 pairs of Nottingham Lace Curtains, choice of both Ecru and White; 3 yards long. Reg. to \$1.70 pair. Friday \$1.20 pair.



LOT 4—500 yards of fine Curtain Lace, assorted patterns, new and dainty; 60 inches wide. Reg. 20c. Friday 17c yard.

## TIP TOP BARCAINS FROM THE STAPLE SECTION

We have broken many records for assortments and low prices in our staple section, and clever women will recognize in this Friday's list, that the values are the best possible for the money.

## HEARTH RUG SPECIALS.

<b>Brussels Hearth Rugs</b> Size 24 x 54 inches; neat floral patterns. Reg. \$2.00. Friday \$1.70 each.	<b>Brussels Hearth Rugs</b> Size 27 x 64 inches; rich and neat effects. Reg. \$2.50. Friday \$2.15 each.
--	---

## Imitation Turkish Rugs.

Size 27 by 56-inches.  
Neat Border and Fancy Centre.  
Reversible.  
Regular \$2.00 for \$1.65 each.

Great as the crowds, always here on Friday's, we expect this Friday to surpass them all, so advise all who possibly can to do their shopping as early in the day as possible.

<b>BOLSTER CASES.</b> 2 doz. only of Filled and Hemstitched Linen Bolster Cases, size 22 x 68 inches; good standard quality. Reg. 80c. Friday 62c each.	<b>CUSHION COVERS.</b> 6 doz. of Tapestry Cushion Covers, size 19 x 19 inches; Turkish, Dutch, Red Riding Hood and Boating Scenes. Reg. 22c. each. Friday 18c	<b>TOOTH PASTE.</b> 5 doz. China Crocks of Vinolia Tooth Paste, antiseptic, astringent, and delightfully perfumed. Reg. 25c. ed. Friday 19c	<b>PEARL BUTTONS.</b> 500 doz. of Pearl Buttons, suitable either for Dress or Shirt use; choice of four different sizes. Reg. 4c. doz. Friday, 3 doz. for 7c	<b>EXERCISE BOOKS.</b> 30 doz. of "The Standard" Exercise Books, ruled font; full assortment of Tables on back cover. Reg. 2c. each. Friday, 1 for 5c
<b>PILLOW CASES.</b> 3 doz. of Filled and Embroidered White Cotton Pillow Cases, size 20 x 28 inches; each corner neatly embroidered. Reg. 45c. ea. Friday 38c	<b>WOMEN'S HOSE.</b> 30 doz. of Women's Black Cashmere and Worsted Hose, fine English manufacture. Values to 40c. pair. Friday 34c	<b>VIOLET POWDER.</b> 20 doz. packets of Violet Powder, suitable either for Toilet or Nursery use. Reg. 3c. pckt. Friday, 3 pcks. for 5c	<b>TAPE.</b> 117 doz. of best Blocked India Tape, the only patented non-twist made in England; assorted sizes. Reg. 2c. piece. Friday, 3 pcs. for 4c	<b>ENVELOPES.</b> 750 packets of Cream Laid Envelopes, 25 in packet; oblong and square. Reg. 4c. pck. Friday, 2 pcks. for 5c
<b>SIDEBOARD CLOTHS.</b> 18 only White Linen Sideboard Cloths, fine Lace and Insertion trimmed, and hemstitched band, size 12 x 48 inches. Reg. 45c. each. Friday 35c	<b>SCRUBBING CLOTHS.</b> 2 doz. of Scrubbing Cloths, good thick quality, edges well bound. Reg. 5c. each. Friday, 2 for 8c	<b>PHOTO FRAMES.</b> 10 doz. of assorted Photo Frames, including Celluloid, Leatherette and Enamelled Wood; a neat assortment. Reg. 25c. each. Friday 19c	<b>PINS.</b> 720 sheets of Nickeled Toilet Pins, all large size. Special. Friday, 4 sheets for 5c	<b>DRESS GOODS.</b> A sale that is calculated to strengthen our standing as the leading distributors of Dress Goods in Newfoundland.
<b>TABLE COVERS.</b> 10 only Chenille Table Covers, 8-4 size, assorted floral effects in Greens, Gold and Crimson. Regular \$1.60 each. Friday \$1.30	<b>WHITE SHIRTING.</b> 2,000 yards of English White Shirting, 31 inches wide; suitable for hand or machine use. Reg. 15c. yard. Friday 11c	<b>TOILET SOAP.</b> 50 cakes of Toilet Soap, nicely perfumed; made by Blondecq & Co., Paris and London. Special Friday, 2 cks for 9c	<b>COLLAR SUPPORTS.</b> 200 sets of "The Little Beauty" Collar Supports, Celluloid, with Black Gilt, Turquoise and Imitation Pearl Settings; one set in box. Reg. 20c. set. Friday 15c	400 yards of Amazon and Covert Cloths, with fine Satin finish; colors of Navy, Black, Veux Rose, Saxe, Prunelle, Crimson and Navy; 52 inches wide. Reg. \$1.50 yard. Friday \$1.25

<b>Linoleum Door Mats</b> Reg. 35c. for 30c.	<b>Cocoonat Door Mats</b> Reg. \$1.00. for 85c.	<b>Striped Bed Tick</b> Reg. 30c. for 27c.
---	--	---



<b>Ladies Gloves</b> Heavy Cashmere, Suede finish. Reg. 25c. Friday, 20c pair	<b>Ladies Kid Gloves</b> 2 dome fasteners. Reg. \$1.00. Friday, 90c pair	<b>Ladies Boots</b> Fine Velv Kid, Buttoned & Laced. Reg. \$2.40. Friday, \$2.15 pair
--	---	--

No Breakfast or Tea-table is complete without it.

# "GOLDEN SHRED" Marmalade

A Delightful Appetizer.

PREPARED BY JAMES ROBERTSON & SONS

The Finest Marmalade in the World

NEW SEALING SHIP. Work on Brine Johnstone's new sealing steamer is progressing well, and she will be out in ample time to be put in readiness for the coming voyage.

TWO ARRESTS.—The police made two arrests for drunkenness last night. The prisoners were held at the lock-up and came before court this morning.

IN CRITICAL CONDITION.—Mr. Cobb who went to Hospital yesterday to have an operation performed for appendicitis, is still in a critical condition.

Attention is called to the great Piano and Organ Clearance Sale at CHESLEY WOODS—All reduced to cost and charges—Sale continues to end of present year—Nov. 11

## Defended Salvationists.

While Rev. Sidney Swann, the vicar of Crosby, Bawburgh, Westmoreland, who rowed from Dover to Sangate, near Cape Grizencz, Calais, in a 29 foot racing skiff in the extraordinary short time of 3 hours and 50 minutes, was an undergraduate at Cambridge, he was noted for his unusually liberal minded views. For example, the Salvation Army in the "Varsity town met with fierce opposition. A rowdy antagonistic mob used to find pleasure in smashing up the bandmen's instruments, and personal violence was not by any means unknown. This was too much for a trio of the undergraduates—S. Swann, Rowing Blue, who has now conquered

the Channel; C. T. Studd, the famous cricketer, now so useful a worker at the London Polytechnic; and S. P. Smith, stroke of the Light Blue crew. These at once decided to show their sympathies with the Army by addressing the crowds who were drawn night to the local Salvation Army barracks. It is a remarkable fact that from that time the opposition commenced to subside, and some of the most troublesome of the "roughs", led to hear the young "Varsity speakers, afterwards became "soldiers" of the Army.

About those Silver Framed Cake Stands. You will find a handsome new stock of them at TRAPNELL'S now, just opened.—Nov. 10, 11.

## Herring Fishery News.

The herring fishery at Bonne Bay is keeping up well. The herring are of a large size, and the schooners that were there last week finished loading in record time. A fleet of vessels which found herring scarce in Bay of Islands is now on the way to Bonne Bay. There is quite a slack of the Middle Arm and the Humber Arm the past ten days. At Woods Island there are some vessels seeking herring, and they are finding the work of landing very slow.

I. O. G. T.—George Boyd Lodge held a most successful meeting last night when two candidates were admitted. To-morrow (Friday) night Onward Lodge anticipates a full meeting. Rev. Dr. Rogers and others will address the members and friends. All are welcome.





