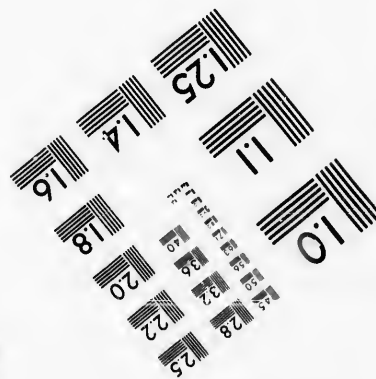
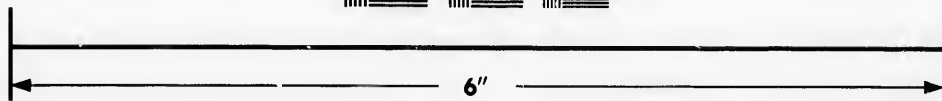
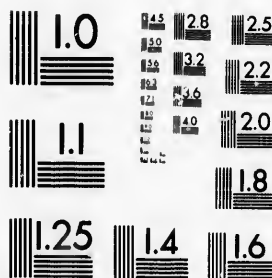


**IMAGE EVALUATION  
TEST TARGET (MT-3)**



**Photographic  
Sciences  
Corporation**

23 WEST MAIN STREET  
WEBSTER, N.Y. 14580  
(716) 872-4503

**CIHM/ICMH  
Microfiche  
Series.**

**CIHM/ICMH  
Collection de  
microfiches.**



**Canadian Institute for Historical Microreproductions / Institut canadien de microreproductions historiques**

**© 1986**

Technical and Bibliographic Notes/Notes techniques et bibliographiques

The Institute has attempted to obtain the best original copy available for filming. Features of this copy which may be bibliographically unique, which may alter any of the images in the reproduction, or which may significantly change the usual method of filming, are checked below.

L'Institut a microfilmé le meilleur exemplaire qu'il lui a été possible de se procurer. Les détails de cet exemplaire qui sont peut-être uniques du point de vue bibliographique, qui peuvent modifier une image reproduite, ou qui peuvent exiger une modification dans la méthode normale de filmage sont indiqués ci-dessous.

- Coloured covers/  
Couverture de couleur
- Covers damaged/  
Couverture endommagée
- Covers restored and/or laminated/  
Couverture restaurée et/ou pelliculée
- Cover title missing/  
Le titre de couverture manque
- Coloured maps/  
Cartes géographiques en couleur
- Coloured ink (i.e. other than blue or black)/  
Encre de couleur (i.e. autre que bleue ou noire)
- Coloured plates and/or illustrations/  
Planches et/ou illustrations en couleur
- Bound with other material/  
Relié avec d'autres documents
- Tight binding may cause shadows or distortion along interior margin/  
La reliure serrée peut causer de l'ombre ou de la distorsion le long de la marge intérieure
- Blank leaves added during restoration may appear within the text. Whenever possible, these have been omitted from filming/  
Il se peut que certaines pages blanches ajoutées lors d'une restauration apparaissent dans le texte, mais, lorsque cela était possible, ces pages n'ont pas été filmées.

- Coloured pages/  
Pages de couleur
- Pages damaged/  
Pages endommagées
- Pages restored and/or laminated/  
Pages restaurées et/ou pelliculées
- Pages discoloured, stained or foxed/  
Pages décolorées, tachetées ou piquées
- Pages detached/  
Pages détachées
- Showthrough/  
Transparence
- Quality of print varies/  
Qualité inégale de l'impression
- Includes supplementary material/  
Comprend du matériel supplémentaire
- Only edition available/  
Seule édition disponible
- Pages wholly or partially obscured by errata slips, tissues, etc., have been refilmed to ensure the best possible image/  
Les pages totalement ou partiellement obscurcies par un feuillet d'errata, une pelure, etc., ont été filmées à nouveau de façon à obtenir la meilleure image possible.

- Additional comments: [Printed ephemera] [4] p.  
Commentaires supplémentaires:

This item is filmed at the reduction ratio checked below/  
Ce document est filmé au taux de réduction indiqué ci-dessous.

10X	14X	18X	22X	26X	30X
<input type="checkbox"/>	<input type="checkbox"/>	<input type="checkbox"/>	<input type="checkbox"/>	<input checked="" type="checkbox"/>	<input type="checkbox"/>
12X	16X	20X	24X	28X	32X

The copy filmed here has been reproduced thanks to the generosity of:

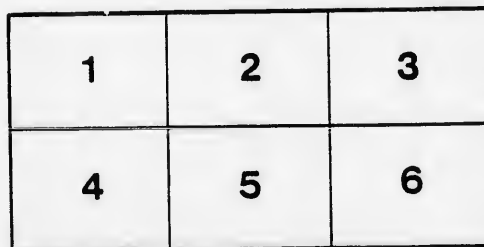
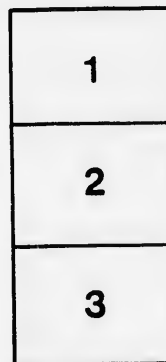
D. B. Weldon Library  
University of Western Ontario  
(Regional History Room)

The images appearing here are the best quality possible considering the condition and legibility of the original copy and in keeping with the filming contract specifications.

Original copies in printed paper covers are filmed beginning with the front cover and ending on the last page with a printed or illustrated impression, or the back cover when appropriate. All other original copies are filmed beginning on the first page with a printed or illustrated impression, and ending on the last page with a printed or illustrated impression.

The last recorded frame on each microfiche shall contain the symbol  $\rightarrow$  (meaning "CONTINUED"), or the symbol  $\nabla$  (meaning "END"), whichever applies.

Maps, plates, charts, etc., may be filmed at different reduction ratios. Those too large to be entirely included in one exposure are filmed beginning in the upper left hand corner, left to right and top to bottom, as many frames as required. The following diagrams illustrate the method:



L'exemplaire filmé fut reproduit grâce à la générosité de:

D. B. Weldon Library  
University of Western Ontario  
(Regional History Room)

Les images suivantes ont été reproduites avec le plus grand soin, compte tenu de la condition et de la netteté de l'exemplaire filmé, et en conformité avec les conditions du contrat de filmage.

Les exemplaires originaux dont la couverture en papier est imprimée sont filmés en commençant par le premier plat et en terminant soit par la dernière page qui comporte une empreinte d'impression ou d'illustration, soit par le second plat, selon le cas. Tous les autres exemplaires originaux sont filmés en commençant par la première page qui comporte une empreinte d'impression ou d'illustration et en terminant par la dernière page qui comporte une telle empreinte.

Un des symboles suivants apparaîtra sur la dernière image de chaque microfiche, selon le cas: le symbole  $\rightarrow$  signifie "A SUIVRE", le symbole  $\nabla$  signifie "FIN".

Les cartes, planches, tableaux, etc., peuvent être filmés à des taux de réduction différents. Lorsque le document est trop grand pour être reproduit en un seul cliché, il est filmé à partir de l'angle supérieur gauche, de gauche à droite, et de haut en bas, en prenant le nombre d'images nécessaire. Les diagrammes suivants illustrent la méthode.

ails  
du  
difier  
une  
n. je

rrata  
o

pelure.  
n à



32X

# GRAND OPERA HOUSE

C. J. WHITNEY

LESSEE

A. E. ROOTE

MANAGER

## PROGRAMME

LONDON

ONT.



**THAT  
FALL  
SUIT**

Let us make it for you this season.  
We have received an entire new stock  
of the latest fabrics to select from.  
No old goods.

**DEEKS & CO.**

393 RICHMOND STREET

NEAR CITY HALL

LONDON, ONT.

**BETWEEN THE ACTS**

CALL

AT THE **RICHMOND HOTEL**

N. E. Cor. Richmond and King Sts.

**FRESH LAGER, WINES, LIQUORS and CIGARS**

H. L. PEINE, New Proprietor

SEASON 1898-9



**WEDNESDAY AND THURSDAY**

Sept. 21st and 22nd



THE BEAUTIFUL SOUTHERN ACTRESS,

**Miss Lorraine Hollis**

SUPPORTED BY THE

**LORRAINE  
HOLLIS STOCK  
COMPANY**

IN THE SOCIETY MELO-DRAMA IN  
PROLOGUE AND FOUR ACTS,

**"THE TIGRESS"**

**MASON & RISCH**

**PIANOS**

The Instruments . . .  
. . . of the Cultured

SEE AND HEAR THEM AT THE  
COMING EXHIBITION

—OR AT—

MASON & RISCH WAREROOMS:

**213 DUNDAS STREET**

**C. H. TESKEY**

MANAGER

LONDON BRANCH

**SMITH BROS.**

STEAM, GAS and  
HOT WATER  
FITTERS

**PLUMBERS**

265 Dundas Street  
Telephone 538

**LONDON**

THIS  
PROGRAMME

IS FROM THE PRESS OF

**Heal & Fleming**

172 KING STREET

WE SOLICIT YOUR  
PATRONAGE



TELEPHONE  
874

# THE LONDON FLORAL CO'Y

...DEALERS IN...

All Kinds of

## “CUT” FLOWERS

And Decorative Plants.

Theatre Parties  
a Specialty. 249 Dundas Street.

PHONE 493.

SMOKE THE ONLY HONEST VIRGINIA 5c CIGAR SOLD  
H. McKENNA, 225 DUNDAS STREET.



## You Contemplate Wedding



WHY not have the latest ideas? In catering we can save you trouble and expense. Are you giving a Bicycle Party, an At Home or Social? We offer inducements that are irresistible. Our Soda Water and Jersey Ice Cream has no equal. Our candies and Confectionery made fresh daily. If you wish dressed fowl or meats of any variety, leave your order with us, we can supply you on shortest notice. Oysters served in every style. Lunch rooms open till 12 p.m.

SPECIALTIES: Salads and Puddings, Hot and Cold Lunches.  
SENT TO ANY PART OF THE CITY.

SHORT BROS.  
Phone 491 220 Dundas Street

## Stroyan's Mammoth Livery

BOARDING AND SALE STABLES

Phone No. 503



Open Day and Night

HACKS, COUPES AND LIGHT LIVERY  
A. G. STROYAN, Proprietor

CALL THE USHER WHEN IN WANT OF CAB OR COUPE

Full Line of... LONDON VIEWS

## ...SOUVENIRS...

Useful Wedding and Birthday Presents

## Yeo's China Hall

177 DUNDAS STREET

China and Glass Goods for all household purposes.  
You are invited to call and inspect our new full stock of Fancy China.

## CAST OF CHARACTERS IN PROLOGUE

Victor Valjean..... Mr. Orme Caldara  
Gerard Troubet..... Mr. W. H. Green  
Mons. Brigard..... Mr. A. C. Noyes  
Gabrielle Margot..... Miss Carolyn McLean  
Sara..... Miss Florence Wilburham  
—AND—  
LISE TROUBET..... MISS LORRAINE HOLLIS

## CAST OF CHARACTERS IN PLAY

Count Raphael Beaudry..... Mr. L. E. Conness  
Count Berotti..... Mr. W. H. Green  
Lord Noddy..... Mr. John Cumberland  
Jean..... Miss Martha Van Allen  
Angela Romano..... Miss Florence Wilburham  
Countess Beaudry..... Miss Carolyn McLean  
Mme. Lanine..... Miss George Elliot  
Etienne..... Miss Emily  
—AND—  
STELLA BAROTTI..... MISS LORRAINE HOLLIS



## Rimless Glasses

ROCK CRYSTALIZED LENSES

DOCTORS

## Duckett, Bell & Melrose

THE ONLY EXCLUSIVE EYE SPECIALISTS

220 DUNDAS STREET, - LONDON

## HA! HA! HA!



Like the funny man in the show, we laugh at all competition in our line of trade. Laugh one, laugh all! then leave your order for something choice in.....

Meats, Poultry Game, &c.

## BREEN'S

Phone 944 735 Richmond Street  
DELIVERED FREE TO ALL PARTS OF CITY

## Cannot Be Done

AT HOME FOR THE MONEY

Table Covers, Napkins, Sheets  
Pillow Slips, Towels, Rollers

50 OF THE ABOVE PIECES  
LAUNDERED FOR 50 CENTS

Work called for and delivered to any part of the city free.

PHONE 559

Parisian Steam Laundry Co.  
LIMITED

## FAIRBAIRN

Opposite City Hall  
UP-STAIRS

## The Tailor

If you have your own cloth, bring it to me and I will make it up in the best possible style at a reasonable cost.

## Fall Suits and Overcoats

Prices sure to suit you as well as fit.  
A CALL SOLICITED.

FAIRBAIRN, The Tailor

Opposite City Hall, Richmond St.

'Tis almost second nature for an actor to relate stories, even of a funeral nature, in as entertaining a manner as possible.

Mr. Goodwin is accredited with talking about it the other day.

"For instance," said he, "what's the use of going into all the harrowing details. Leave something to the imagination. Now, take for example, suppose you read something like this in the paper:

"In Boston the other day, a man thought he could cross the track in advance of a locomotive. The services at the grave were very impressive." Or

"A man in Maryland ate fifty raw oysters on a wager. The silver trimmings on his collar cost \$1250." Or

"A Chicago man warned his wife not to light the fire with kerosene. She did not heed the warning. Her clothes fit his second wife admirably well." Or

"A Londoner got tired of buying his coal haphazard, because it was cheap, and now buys it from Cameron. As a result the doctor never calls, and he and his family are happy all the time." 'Tis brief, but really all-sufficient. Office, Hiscox Building; Yard, Burwell Street, at G. T. R.

## NOTICE

The limited space unrented in this programme may be applied for at the Box Office. You read this, so would your advertisement be read. Keep yourself and business before the public. Theatre patrons are good customers for most business men.

## NEW PALACE .... Dancing Academy

422 RICHMOND STREET  
(Over Canadian Loan and Savings Bank)

Opening Night, Monday, Oct. 3

ELECTRIC LIGHTS, ELECTRIC FANS  
AND EVERYTHING NEW AND UP-TO-DATE.

Academy open every evening for application of pupils. Call early, as classes will be limited to number.

DAYTON & McCORMICK

## LONDON STEAM LAUNDRY

284 Dundas Street

FIRST-CLASS WORK MODERATE RATES

Family Washing <sup>ROUGH DRIED</sup> 5c per lb.

## Theatrical Troupes

PROMPTLY WAITED UPON

Prompt Work Satisfaction Guaranteed

TELEPHONE 1266

OUR WAGON WILL CALL

G. M. RYCKMAN, Proprietor

## F. H. BUTLER Stock Broker

STOCKS, GRAINS AND PROVISIONS bought and sold for cash or on margin. Private wires to New York Stock Exchange and Chicago Board of Trade. Toronto and Montreal Stock Exchange quotations received by wire.

LONG DISTANCE TELEPHONE 1278

15-16 Masonic Temple, London

## GOING ...THE... ADVERTISER

SIGNS, BANNERS  
and WALL WORK <sup>578</sup>  
RICHMOND ST.

## E. J. PEARCE

Successor to E. J. BURKE

521 RICHMOND STREET

FULL LINE

Amateur

Supplies

ALWAYS  
IN STOCK



\*\*\*\*\*

### Synopsis of Play.

Prologue—Ante-room to the gambling room at Monte Carlo. "To-day for you, for me tomorrow."

Act I.—Garden of the Chateau Beaudry.

Act II.—Drawing-room of the Chateau Beaudry. "You forget she is my mother's guest."

Act III.—Ball room, Chateau Beaudry. "Behold the Beaudry Diamonds."

Act IV.—The Lair of the Tigress. "The morrow has come."

This piece is produced under the personal stage direction of MISS LORRAINE HOLLIS.

\*\*\*\*\*

FRIDAY AND SATURDAY, SEPTEMBER, 23 AND 24  
AND SATURDAY MATINEE.

The Famous Emotional Drama

## "CAMILLE"

The Famous Bell Orchestral Piano

IS USED EXCLUSIVELY IN THIS THEATRE.

## SLATER BROS. TAILORS

399 Richmond St. Telephone 844

## FINE IMPORTED WOOLENS

A SPECIALTY

LARGEST STOCK IN THE CITY ORDERS FINISHED PROMPTLY

"The Ravishing Bliss of a Lover's First Kiss"

Is the only adequate illustration of the delicious satisfaction that is afforded the user of

## P. J. WATT'S PURE WINE

There are other wines sold in London, but the old NATIVE PORT, manufactured by P. J. Watt, has the same invigorating effect to the stomach that a shower bath has on a tramp.

1886, 80c; Vintage 1895, \$1.00 per gallon.

428 RICHMOND STREET, Next News Office

A Man Wants to See You  
BETWEEN ACTS, AT



JERRY McDONALD'S

131 KING STREET

## THE TEGUMSEH

LONDON, ONT.



FIRST-CLASS  
IN ALL  
APPOINTMENTS.

SPECIAL RATES  
FOR COMPANIES

CHAS. W. DAVIS,  
Proprietor.

## Next Attraction

TUESDAY, SEPTEMBER 27  
MATINEE AND NIGHT

### The Latest Laugh Provoker

As Played 100 Nights at the  
Standard Theatre, New York

# THE REAL WIDOW BROWN

Fun with Realism  
Good Music

Grand Voices  
One Continuous Laugh

Direction of A. Q. SCAMMON

### SPECIAL BARGAIN PRICES:

Matinee, 15c and 25c.

Night prices, lower floor, 30c; first two rows balcony 35c,  
balance 25c; gallery, 15c.

SEATS ON SALE SATURDAY



