

**CIHM  
Microfiche  
Series  
(Monographs)**

**ICMH  
Collection de  
microfiches  
(monographies)**



**Canadian Institute for Historical Microreproductions / Institut canadien de microreproductions historiques**

**© 1996**

## Technical and Bibliographic Notes / Notes technique et bibliographiques

The Institute has attempted to obtain the best original copy available for filming. Features of this copy which may be bibliographically unique, which may alter any of the images in the reproduction, or which may significantly change the usual method of filming are checked below.

- Coloured covers / Couverture de couleur
- Covers damaged / Couverture endommagée
- Covers restored and/or laminated / Couverture restaurée et/ou pelliculée
- Cover title missing / Le titre de couverture manque
- Coloured maps / Cartes géographiques en couleur
- Coloured ink (i.e. other than blue or black) / Encre de couleur (i.e. autre que bleue ou noire)
- Coloured plates and/or illustrations / Planches et/ou illustrations en couleur
- Bound with other material / Relié avec d'autres documents
- Only edition available / Seule édition disponible
- Tight binding may cause shadows or distortion along interior margin / La reliure serrée peut causer de l'ombre ou de la distorsion le long de la marge intérieure.
- Blank leaves added during restorations may appear within the text. Whenever possible, these have been omitted from filming / Il se peut que certaines pages blanches ajoutées lors d'une restauration apparaissent dans le texte, mais, lorsque cela était possible, ces pages n'ont pas été filmées.
- Additional comments / Commentaires supplémentaires:

L'Institut a microfilmé le meilleur exemplaire qu'il lui a été possible de se procurer. Les détails de cet exemplaire qui sont peut-être uniques du point de vue bibliographique, qui peuvent modifier une image reproduite, ou qui peuvent exiger une modifications dans la méthode normale de filmage sont indiqués ci-dessous.

- Coloured pages / Pages de couleur
- Pages damaged / Pages endommagées
- Pages restored and/or laminated / Pages restaurées et/ou pelliculées
- Pages discoloured, stained or foxed / Pages décolorées, tachetées ou piquées
- Pages detached / Pages détachées
- Showthrough / Transparence
- Quality of print varies / Qualité inégale de l'impression
- Includes supplementary material / Comprend du matériel supplémentaire
- Pages wholly or partially obscured by errata slips, tissues, etc., have been refilmed to ensure the best possible image / Les pages totalement ou partiellement obscurcies par un feuillet d'errata, une pelure, etc., ont été filmées à nouveau de façon à obtenir la meilleure image possible.
- Opposing pages with varying colouration or discolourations are filmed twice to ensure the best possible image / Les pages s'opposant ayant des colorations variables ou des décolorations sont filmées deux fois afin d'obtenir la meilleure image possible.

This item is filmed at the reduction ratio checked below/  
Ce document est filmé au taux de réduction indiqué ci-dessous.

10x	14x	18x	22x	26x	30x														
12x	16x	20x	24x	28x	32x														

The copy filmed here has been reproduced thanks to the generosity of:

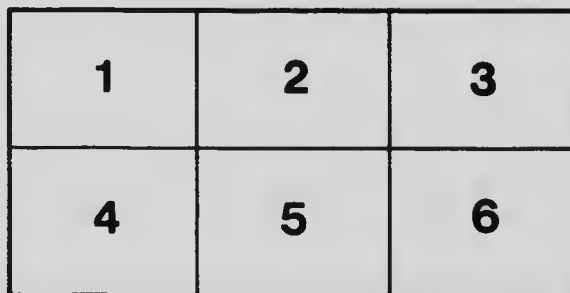
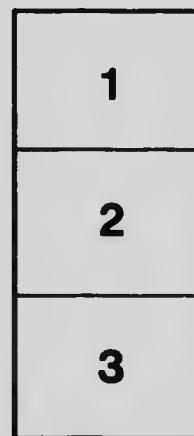
Harriet Irving Library  
University of New Brunswick

The images appearing here are the best quality possible considering the condition and legibility of the original copy and in keeping with the filming contract specifications.

Original copies in printed paper covers are filmed beginning with the front cover and ending on the last page with a printed or illustrated impression, or the back cover when appropriate. All other original copies are filmed beginning on the first page with a printed or illustrated impression, and ending on the last page with a printed or illustrated impression.

The last recorded frame on each microfiche shall contain the symbol  $\rightarrow$  (meaning "CONTINUED"), or the symbol  $\nabla$  (meaning "END"), whichever applies.

Maps, plates, charts, etc., may be filmed at different reduction ratios. Those too large to be entirely included in one exposure are filmed beginning in the upper left hand corner, left to right and top to bottom, as many frames as required. The following diagrams illustrate the method:



L'exemplaire filmé fut reproduit grâce à la générosité de:

Harriet Irving Library  
University of New Brunswick

Les images suivantes ont été reproduites avec le plus grand soin, compte tenu de la condition et de la netteté de l'exemplaire filmé, et en conformité avec les conditions du contrat de filmage.

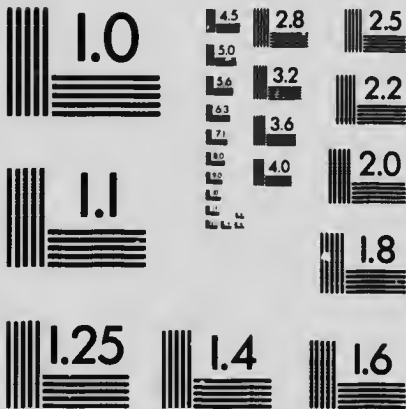
Les exemplaires originaux dont la couverture en papier est imprimée sont filmés en commençant par le premier feuillet et en terminant soit par le dernier page qui comporte une empreinte d'impression ou d'illustration, soit par le second feuillet, selon le cas. Tous les autres exemplaires originaux sont filmés en commençant par la première page qui comporte une empreinte d'impression ou d'illustration et en terminant par la dernière page qui comporte une telle empreinte.

Un des symboles suivants apparaîtra sur le dernier image de chaque microfiche, selon le cas: le symbole  $\rightarrow$  signifie "A SUIVRE", le symbole  $\nabla$  signifie "FIN".

Les cartes, planches, tableaux, etc., peuvent être filmés à des taux de réduction différents. Lorsque le document est trop grand pour être reproduit en un seul cliché, il est filmé à partir de l'angle supérieur gauche, de gauche à droite, et de haut en bas, en prenant le nombre d'images nécessaire. Les diagrammes suivants illustrent la méthode.

# MICROCOPY RESOLUTION TEST CHART

(ANSI and ISO TEST CHART No. 2)



APPLIED IMAGE Inc

1653 East Main Street  
Rochester, New York 14609 USA  
(716) 482 - 0300 - Phone  
(716) 288 - 5989 - Fax



*Educational*  
*Institute*  
*of*  
*New Brunswick*

# Music's Re-Creation



Something more than mere Tone Reproduction.

Artificial Tone Reproduction is wonderful but not musical. A beautiful voice that is marred by mechanical timbre in its reproduction is no longer beautiful. It no longer satisfies the music lover, however great as may be the artist.

MUSIC'S RE-CREATION is the new standard set by

## THE NEW EDISON DIAMOND DISC **PHONOGRAPH**

NO NEEDLES TO CHANGE

UNBREAKABLE RECORDS

The actual tone of the artist in all its native purity and character. No foreign quality — Not a single blemish. Thanks to Mr. Edison's super-knowledge of sound, chemistry and acoustics.

COME and LET US PLAY THE NEW EDISON DIAMOND DISC for you. If you are a music lover, you will be delighted.

**Phonograph Department**

SECOND FLOOR

MARKET  
SQUARE

**W. H. THORNE & CO. LTD.**

KING  
STREET

ST. JOHN, N. B.

# EDUCATIONAL INSTITUTE OF NEW BRUNSWICK



TWENTY-SIXTH MEETING  
HIGH SCHOOL BUILDING  
ST. JOHN, N.B. WEDNESDAY  
THURSDAY AND FRIDAY  
JUNE 28 ' 29 ' AND 30 ' 1916



## PROGRAMME



FIRST SESSION — WEDNESDAY, JUNE 28.

9.00 A.M. Meeting of Executive Committee.

10.00 A.M. Enrolment — Report of Executive Committee — Election of  
Secretary and Nominating Committee — Appointment of  
Committees.

Address by the President. W. S. CARTER, LL.D.  
Chief Superintendent of Education

# "OAK HALL"

## St. John's Greatest Clothing Store

**E**XTENDS GREETINGS to the many Teachers and their Friends who are visiting our City at this time, and we trust that each and all of you may find time while . . . this city to call and inspect our New Store with its many up-to-date features of service; not forgetting also to inspect our superb stock of Merchandise.

Men's and Boys' Clothing.

Men's and Boys' Furnishings.

Misses' and Women's Garments.

Hats, Caps, Trunks, Valises.

*Leont Bros Limited*

OAK HALL  
55-57-59 King Street.

ST. JOHN, N. B.



**SECOND SESSION - - WEDNESDAY, JUNE 28**

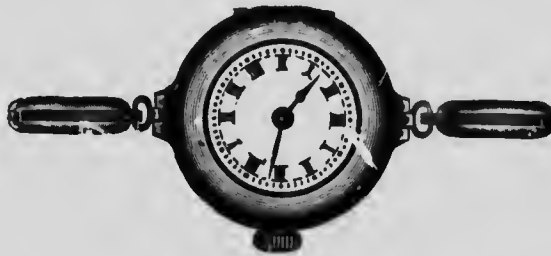
2.50 P.M. "The Ideal School Board." Mrs. W. G. CLARKE,  
Fredericton, N. B.

3.30 P.M. "Evening Continuation Schools." Dr. F. H. SEXTON,  
Director of Technical Education, Nova Scotia

8.30 P.M. PUBLIC MEETING — OPERA HOUSE.  
Dr. W. S. CARTER, Chairman.

Addresses of Welcome.

"The Citizen and his Schools." Hon. PAYSON SMITH,  
State Superintendent of Education, Maine



## Bracelet Watches.

Our New Stock contains all the Latest Styles in Wrist Watches, and includes some in Fine Gold and Platinum, with Diamond Settings, and a complete line in Gold, Gold Filled and Silver.

Our Wrist Watches are giving satisfaction, and we do not handle any of the cheaper lines — the Best is none too good for you.

**FERGUSON & PAGE, King Street, St. John, N.B.**



## YOUNG CANADA

Is rapidly forging ahead with the aid of able Teachers  
and splendid Educational Systems.

HEADQUARTERS FOR SCHOOL SUPPLIES:

### McMILLAN'S

98 and 100 Prince William Street, ST. JOHN, N. B.

**School Books. Globes. Maps.**

**Hyloplate**, the great substitute for slate.

Our Special **Book Lists** cheerfully supplied. Convenient Time Savers

Manufacturing Departments open for Inspection.

Every Process from Raw Material to the Finished Book.

**THIRD SESSION -- THURSDAY, JUNE 29.**

- 9.30 A.M. "A Prescribed Reading Course for Teachers in advance of Class II." Dr. H. V. B. BRIDGES,  
Principal Normal School
- 10.30 A.M. "School Playgrounds." Mr. W. B. TENNANT,  
St John, N. B.
- 11.30 A.M. "Sanitation in School and Home." Dr. G. C. MELVIN,  
St. John, N. B.

**FOURTH SESSION -- THURSDAY, JUNE 29.**

- 2.30 P.M. "School Libraries -- their Use and Abuse." Miss ELEANOR ROBINSON, Editor "Educational Review"
- 3.30 P.M. "School Cadet Corps." Mr. W. McL. BARKER,  
Moncton, N. B.

**Education--Style--Goodness**

We have many "Educational" friends who buy Costume Dresses and other Smart Apparel from us each season.

They know that the "LONDON HOUSE," (Daniel), bears the reputation of having the nicest Ready-to-Wear in the City.

Many have had experience with our superior Alteration Department where every Garment is made a Perfect and Satisfactory Fit before it goes out.

They know that our Prices are always on the Moderate side with real goodness to back them up.

---

**DANIEL**

London House, St. John, N. B.



Since the Motion Picture form of Entertainment is embracing a larger field every year and has become part of the very life of almost every community, it is of first importance to a seriously established enterprise like Imperial Theatre to cater continually and directly to the tastes of the majority of people. That majority of people is the Family class. We are honestly endeavoring, therefore, to show upon our screen nothing but a morally wholesome class of Drama, Polite Comedies, and a large proportion of Scenic, Travel, Topical and Scientific Films. Combined with our Picture Programme, an Orchestra of twelve professionals under capable leadership supplies standard and current selections, and from time to time Vocalists of merit and refined concertized Vaudeville grace our stage. The aim of Imperial Theatre is to supply clean amusement for discriminating people and sensible suggestions from its patrons for the betterment of our programmes are always welcome.

**FIFTH SESSION — FRIDAY, JUNE 30.**

9.30 A.M. "Use and Misuse of Motion Pictures."

Dr. W. C. KEIRSTEAD, University of New Brunswick.

10.30 A.M. "Schools as Social Centres." Mr. A. M. BELDING,  
Editor Evening Times

11.30 A.M. Election of Executive Committee, Representative to the  
University Senate, Text Book Committee.

**SIXTH SESSION — FRIDAY, JUNE 30.**

2.30 P.M. "The Necessity for Medical Inspection of Schools."

Dr. A. F. EMERY, St. John, N. B.

3.30 P.M. "The Public Schools in Relation to the Mineral Resources of  
Canada." Dr. PHILIP COX, University of New Brunswick

Unfinished Business.

W. S. CARTER, LL.D., President.

GEO. A. INCH, B.A., B.Sc., Secretary

**E. G. NELSON & CO.  
Booksellers and Stationers**

**56 KING STREET**

Invite you to call and inspect their very Large Stock.

**BOOKS** { New Fiction. War Books. Everyman's Library.  
Collin's Classics. Nelson's Century Library.  
Popular Reprints, Etc.

**FOUNTAIN PENS** from \$1.00 to \$12.00 each.

**STATIONERY** { Crane's Linen Lawn, Kid Finish and  
Highland Linen.

**KODAKS and SUPPLIES.**

Let us Develop your Films.

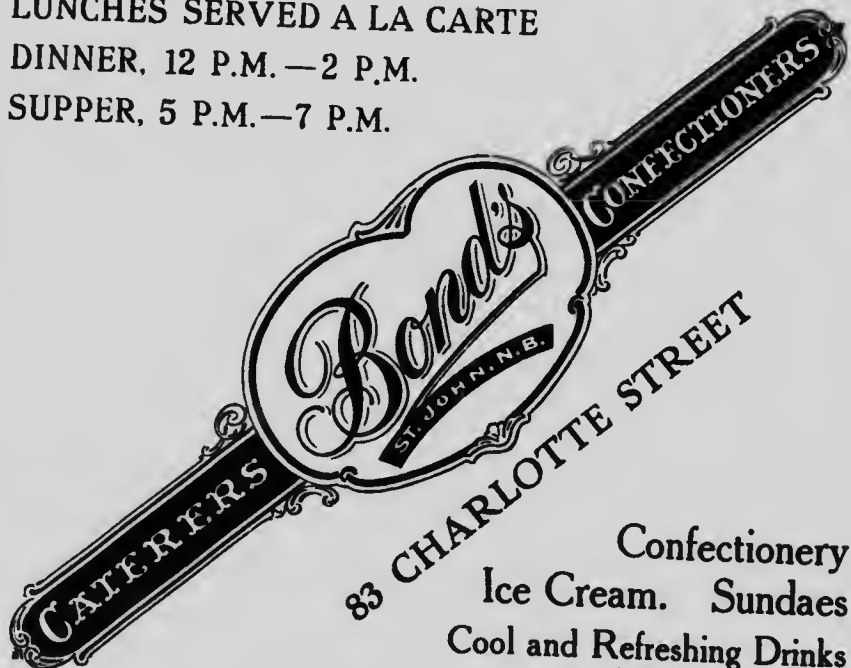
**E. G. NELSON & CO.**

## NOTICE.

The usual Transportation arrangements have been made. Teachers must obtain from the Ticket Agent, with each First Class Ticket purchased, a Certificate in order to secure reduced rates for the return trip. This Certificate must be presented at the Institute to the Secretary for signature.

GEORGE A. INCH,  
Secretary

LUNCHES SERVED A LA CARTE  
DINNER, 12 P.M.—2 P.M.  
SUPPER, 5 P.M.—7 P.M.



83 CHARLOTTE STREET

Confectionery  
Ice Cream. Sundaes  
Cool and Refreshing Drinks  
and Sodas

New Brunswick's Greatest Shoe House.

**WATERBURY & RISING**  
LIMITED



Three  
**RETAIL  
STORES**

King Street  
Main Street  
Union St.

Welcome the Members of the Educational Institute to our city. During the recesses we extend to them an invitation to visit our Stores and at their leisure examine our present showing of New and Fashionable Footwear. We would particularly suggest an examination of our Teachers' Shoes, such as Red Cross, Dr. Reed's and the Nature Arch.

**WATERBURY & RISING LTD.**

WHILE ATTENDING  
THE SESSIONS OF  
THE EDUCATIONAL  
INSTITUTE OF N. B.

June 28th, 29th and 30th

DO NOT FAIL TO  
VISIT SAINT JOHN'S  
LARGEST MERCANTILE  
ESTABLISHMENT

Our Stores are especially Inviting now  
presenting immense Assortments of  
Summer Goods.

THERE WILL BE SOMETHING OF INTEREST  
IN EVERY DEPARTMENT. COME EVERY DAY

---

MANCHESTER  
ROBERTSON  
ALLISON, Limited



