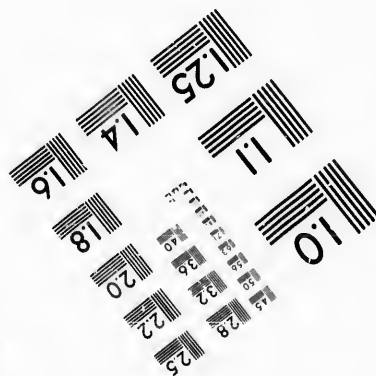
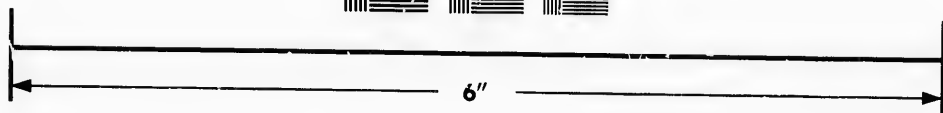
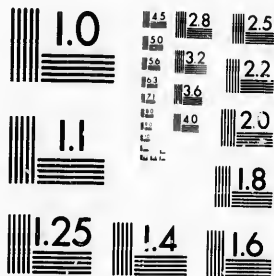
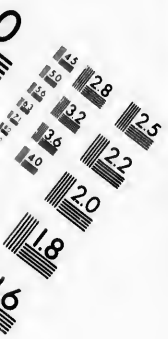


**IMAGE EVALUATION
TEST TARGET (MT-3)**



**Photographic
Sciences
Corporation**

23 WEST MAIN STREET
WEBSTER, N.Y. 14580
(716) 872-4503



**CIHM/ICMH
Microfiche
Series.**

**CIHM/ICMH
Collection de
microfiches.**



Canadian Institute for Historical Microreproductions / Institut canadien de microreproductions historiques



© 1986

The copy filmed here has been reproduced thanks to the generosity of:

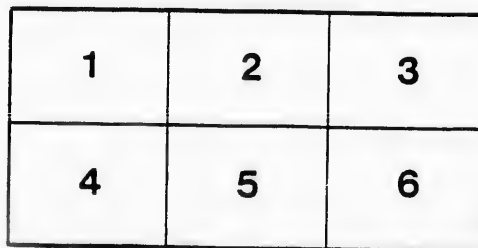
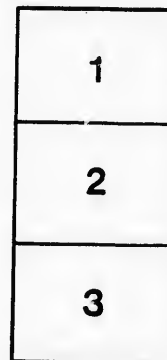
D. B. Weldon Library
University of Western Ontario
(Regional History Room)

The images appearing here are the best quality possible considering the condition and legibility of the original copy and in keeping with the filming contract specifications.

Original copies in printed paper covers are filmed beginning with the front cover and ending on the last page with a printed or illustrated impression, or the back cover when appropriate. All other original copies are filmed beginning on the first page with a printed or illustrated impression, and ending on the last page with a printed or illustrated impression.

The last recorded frame on each microfiche shall contain the symbol \rightarrow (meaning "CONTINUED"), or the symbol ∇ (meaning "END"), whichever applies.

Maps, plates, charts, etc., may be filmed at different reduction ratios. Those too large to be entirely included in one exposure are filmed beginning in the upper left hand corner, left to right and top to bottom, as many frames as required. The following diagrams illustrate the method:



L'exemplaire filmé fut reproduit grâce à la générosité de:

D. B. Weldon Library
University of Western Ontario
(Regional History Room)

Les images suivantes ont été reproduites avec le plus grand soin, compte tenu de la condition et de la netteté de l'exemplaire filmé, et en conformité avec les conditions du contrat de filmage.

Les exemplaires originaux dont la couverture en papier est imprimée sont filmés en commençant par le premier plat et en terminant soit par la dernière page qui comporte une empreinte d'impression ou d'illustration, soit par le second plat, selon le cas. Tous les autres exemplaires originaux sont filmés en commençant par la première page qui comporte une empreinte d'impression ou d'illustration et en terminant par la dernière page qui comporte une telle empreinte.

Un des symboles suivants apparaîtra sur la dernière image de chaque microfiche, selon le cas: le symbole \rightarrow signifie "A SUIVRE", le symbole ∇ signifie "FIN".

Les cartes, planches, tableaux, etc., peuvent être filmés à des taux de réduction différents. Lorsque le document est trop grand pour être reproduit en un seul cliché, il est filmé à partir de l'angle supérieur gauche, de gauche à droite, et de haut en bas, en prenant le nombre d'images nécessaire. Les diagrammes suivants illustrent la méthode.

errata
to

pelure,
n à

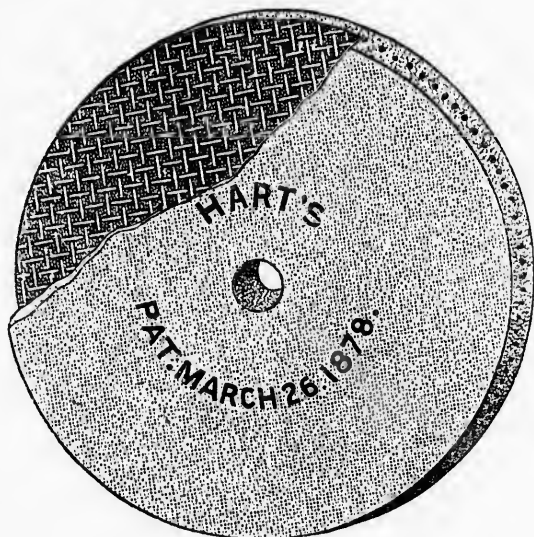
.. HART ..

Emery Wheel Co.

LIMITED.

24 Hunter St. West,

HAMILTON, - - ONTARIO.



MANUFACTURERS OF

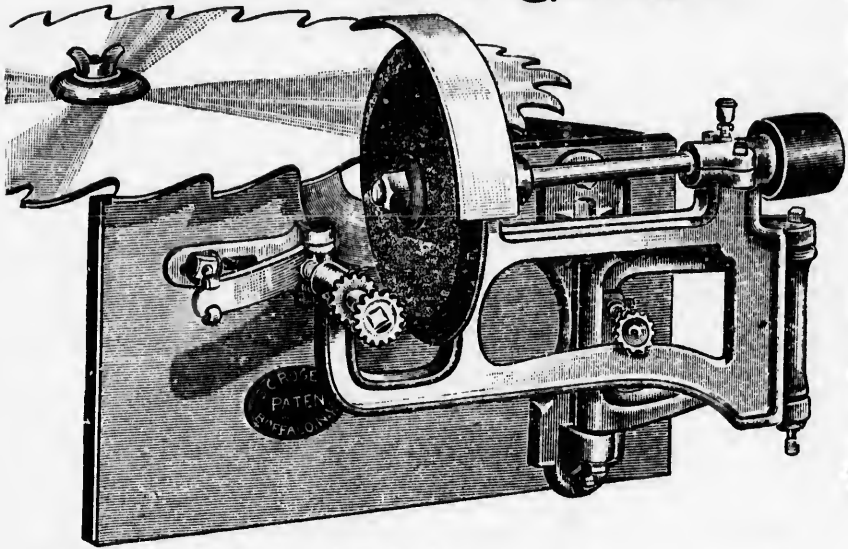
EMERY WHEELS

AND

EMERY WHEEL MACHINERY

COMPLETE CATALOGUE SENT TO ANY ADDRESS
ON APPLICATION.

ROGERS' SAW GUMMER.



THE SIMPLEST, CHEAPEST AND BEST GUMMER EVER MADE

As an appliance for Gumming Saws the Emery (or Corundum) Wheel has almost undisputed possession of the field. It does the work quickly, and, when a wheel suitable for the work is used, without over-heating or case-hardening.

The chief difficulty in the way of the universal adoption of Emery Wheels for gumming saws has been the want of a simple, effective and low priced device for carrying the wheel. The ordinary mandrel or fixed grinder is quite unsuitable for such work, especially if the saw to be gummed is large. The wheel ought to be under the immediate control of the operator, who should be close to the wheel and be able to move it to the saw while the latter remains stationary.

These conditions are all fulfilled in the

ROGERS' SAW GUMMER.

The wheel is absolutely under control and the simple stops and guides make the work perfectly regular and uniform.

This Machine consists of: 1st. A frame, with spindle and emery wheel. 2nd. A double pivoted hinge attached to bracket on table. 3rd. An adjustable chuck for holding the saws.

The guides and stops make it unnecessary to mark off the saw before gumming.

TRY ONE; it won't cost you anything if it is not what you want. Sent on trial to responsible parties.

Full directions with each machine.

LIST PRICE.....\$40.00

SEND FOR NET CASH PRICE.

For Circ

Including
Pulley

This Filer

For Band

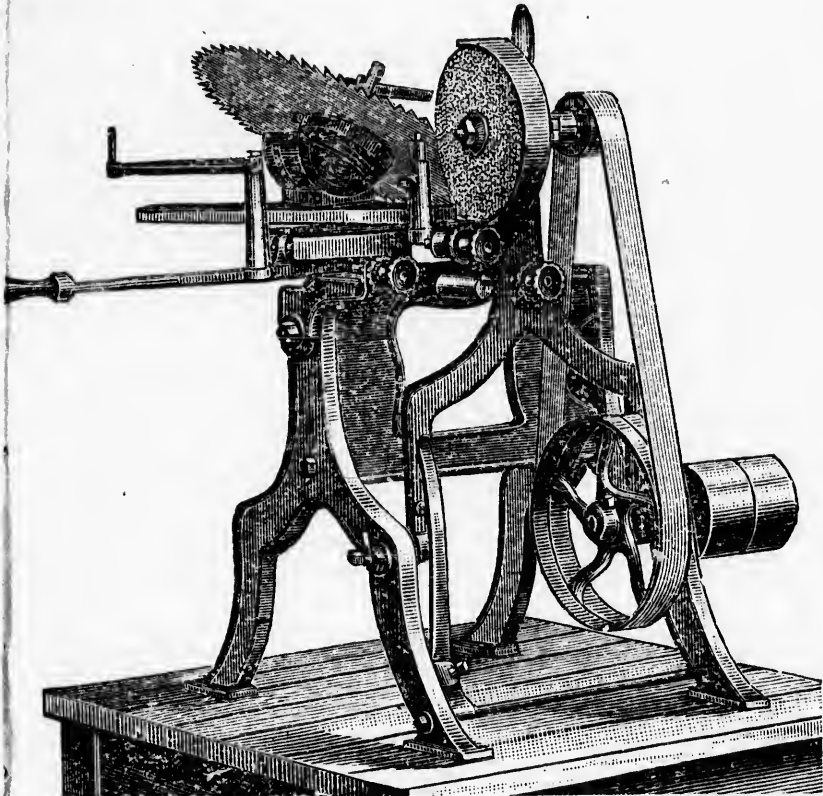
Pack

ROGERS' SAW FILERS.

No. 1 (Factory size).

SEMI-AUTOMATIC.

For Circular Saws 6 to 40-inch diameter, Rip and Cross-cut.



LIST PRICE.

Including 3 Emery Wheels, Belt and Tight and Loose Pulleys, and Table, as shewn..... \$65 00

Send for **SEND FOR NET CASH PRICE.**

This Filer can be made Automatic and to file band saws,

EXTRA.

For Band Attachment..... \$15 00

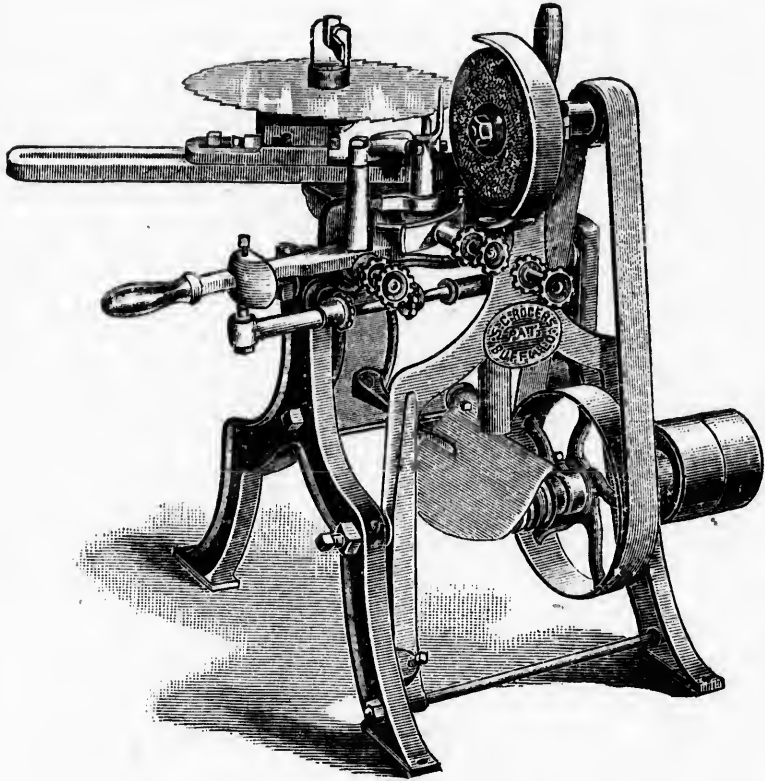
Packed F. O. C. Hamilton.

ROGERS' SAW FILERS.

No. 1 (Factory size).

AUTOMATIC.

For Circular Saws 6 to 40-inch diameter, Rip and Cross-cut,



LIST PRICE.

Including 3 Emery Wheels, Belt, and Tight and Loose Pulleys, and Table, as shewn\$85 00

This machine can be supplied without the Automatic device (see page 2) for\$65 00

 SEND FOR NET CASH PRICE.

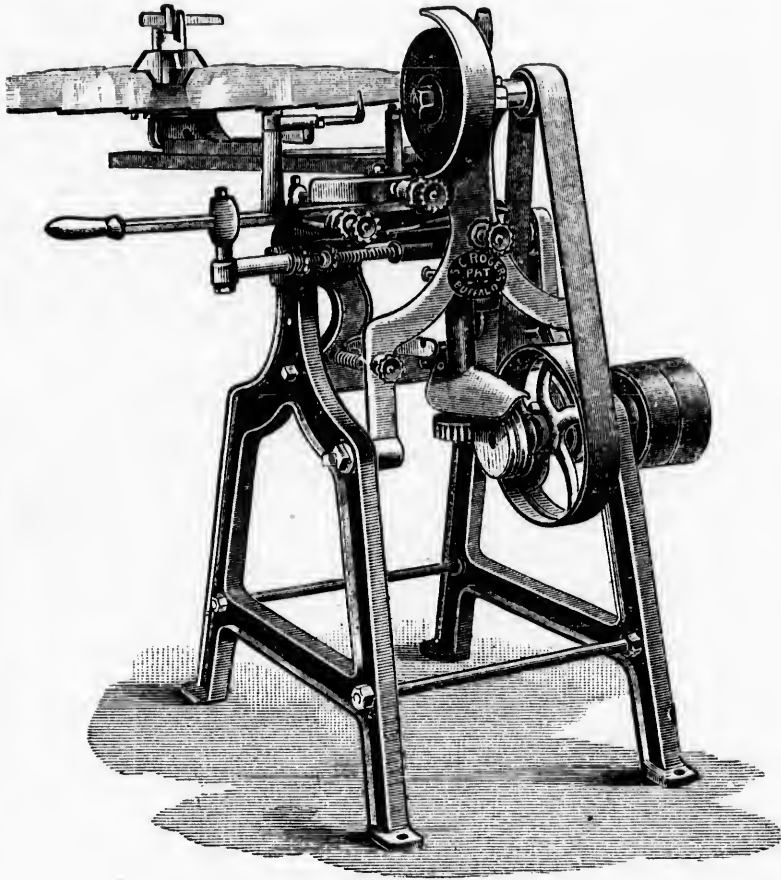
Packed F. O. C. Hamilton.

ROGERS' SAW FILERS.

No. 2. (Small Mill size.)

AUTOMATIC STYLE.

For Circular Saws from 8 to 40-inch diameter, Rip and Cross cut.



LIST PRICE.

As shown with 3 Emery Wheels 8-inch diameter	\$105 00
Without Automatic attachment.....	85 00

SEND FOR NET CASH PRICE,

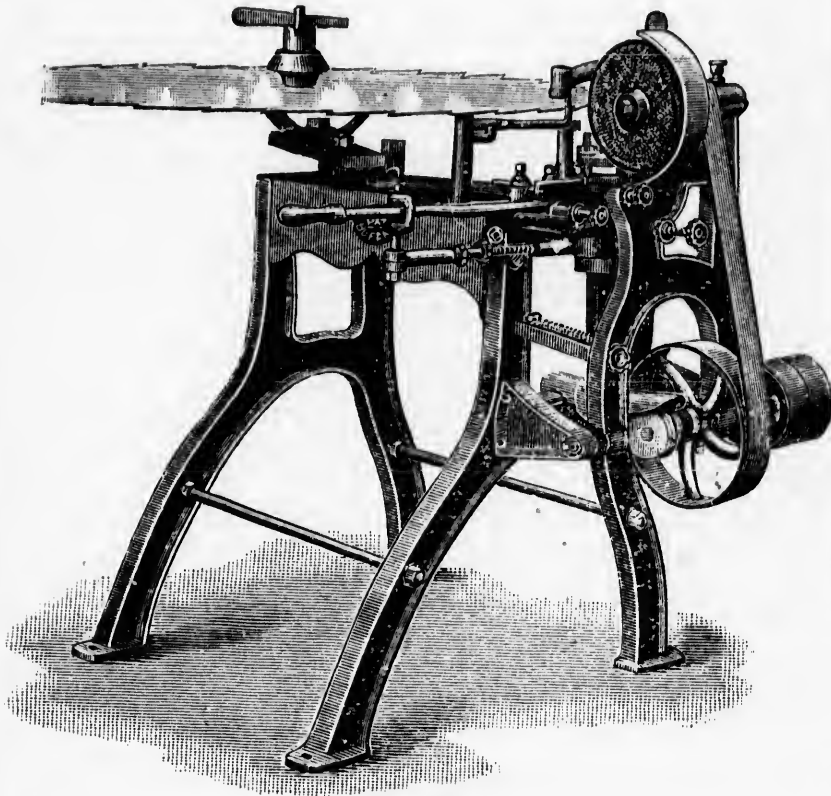
Packed F. O. C. Hamilton.

ROGERS' SAW FILERS.

No. 3. (Large Mill size)

AUTOMATIC STYLE.

For Circular Saws from 8 to 72-inch diameter.



LIST PRICE.

As shown with 3 Emery Wheels 8-inch diameter	\$130 00
Without Automatic attachment	98 00

SEND FOR NET CASH PRICE.

Packed F. O. C. Hamilton.

Ove
been s
as ev
Th
vanta
THEY
THE
THE
THE

Over 2,500 of the Rogers Filers have been sold and the demand is as steady as ever.

This grand sale arises from the advantages the Filers afford the user ;

THEY SAVE TIME.

More than half the time of hand filing is saved.

THEY SAVE POWER.

Because they keep the teeth always in perfect order and the saw perfectly even,

THEY SAVE FILES.

Because an emery wheel excels a file in cutting quality, and costs very much less.

THEY SAVE SAWS.

These are kept round and true, and the waste of material in jointing is saved.

WEIGHT, CAPACITY, DIMENSIONS AND SPEED OF ROGERS' SAW FILERS.

No.	Weight (pkd. for shipin't).	Capacity.	Size of Emery Wheel,	Diameter of F. and L. Pulleys.	Speed of Countershaft.
No. 1	150	Saws 6 to 40 in.	6 x 1/2 in. hole,	4 in.	900 revs. per min.
No. 2	250	" 8 to 40 in.	8 x 3/4 "	6 in.	600 "
No. 3	350	" 8 to 72 in.	8 x 3/4 "	6 in.	600 "

ONE USER OF ROGERS' SAW FILERS WRITES :

" We bought two new shingle saws about the same time that we bought your Filer, and have not used a file on them, and they are in as good shape as when they came from the maker. We sharpen them in one-sixth the time of hand filing."



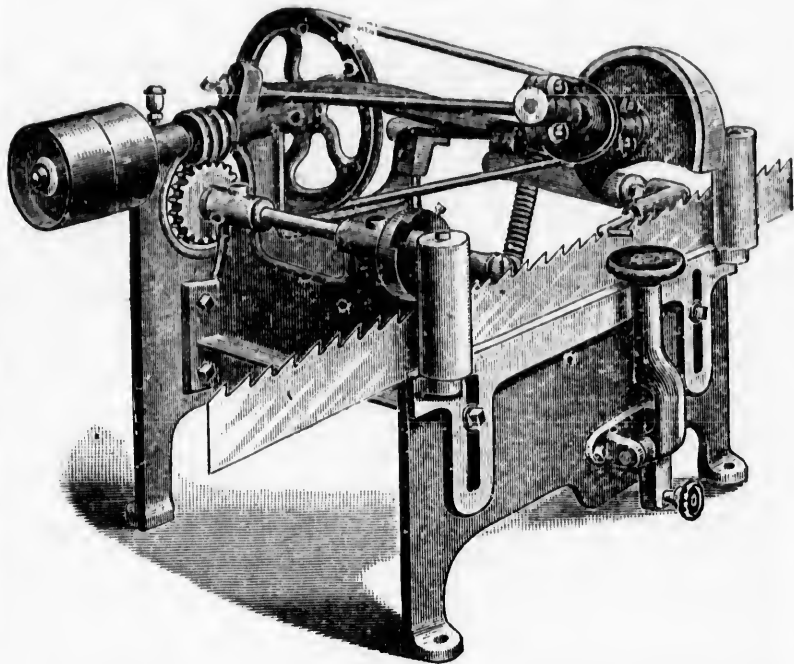
cent
have
will
insp
satis
hold
ban
of th
per
don
of a
out
or a
per
pos
190
use,
whi

B.

as good shape as when they came from the maker. We sharpen them
“in one-sixth the time of hand filing.”

ROGERS' BAND SAW SHARPENER.

For Band Saws 2 to 6 Inches Wide.



This machine is especially designed for Band Re-Saws, and is sent out complete in every particular ready for the saw. If you have a band Re-Saw, and have trouble in keeping it in order, we will be pleased to send one of these machines to you for 30 days' inspection and trial, to be returned at our expense if not entirely satisfactory.

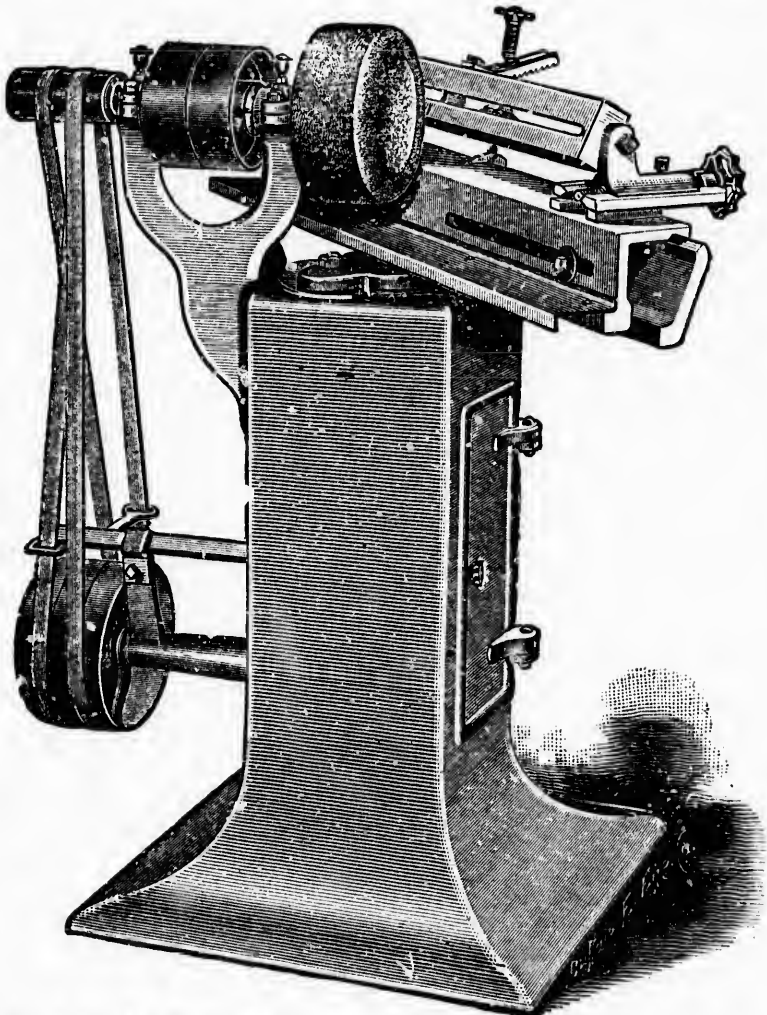
There will be no trouble in setting it up, as we send the saw-holding devices with each machine.

It is simple in design and easily operated. After the teeth of a band re-saw have been put into good and uniform shape by the use of this machine, but little attention is needed to maintain them in perfect shape and efficiency.

The sharpening is finished complete, and is better than can be done by hand. The pawl moves the saw to the left at the rate of about 45 teeth to the minute. The emery wheel moves in and out of each tooth as it passes, grinding either front, throat or back, or all three, as may be deemed necessary.

The 4-inch tight and loose pulleys should run 850 revolutions per minute. The machine is compact, taking up as little room as possible for efficiency. It weighs, ready for shipment [with table] 190 pounds. It is shipped in the table on which it stands when in use, and is complete in every particular except the 2 x 6 scantlings which carry the saw holders.

ROGERS' PLANER KNIFE GRINDER



LIST PRICES F. O. B. HAMILTON.			30 days' trial allowed.	
For Knives to	26 Inches (including	Wheel)	\$100 00
"	" 32 "	"	112 00
"	" 38 "	"	125 00
"	" 44 "	"	140 00
"	" 54 "	"	165 00
"	" 60 "	"	187 00

SEND FOR NET CASH PRICE.

Has
one b

I
differ
face
be se
knife
and t
other
a com
preci
work

forth
cran
nect
cran
exter
by ad
quire

at di
erati
is in
little

and
gent

work

inch
up a
each

met
Wei

suit
bars

DER

ROGERS' PLANER KNIFE GRINDER.

Has points of advantage over some others, the principal one being its adjustability for flat or concave grinding.

By slacking one bolt the slide or bed can be set at different angles before the emery wheel, which has a flat face with the outer corner rounded off. If the slide or bed be set at a right angle to the emery wheel spindle the knife will traverse back and forth against the flat face and the knife be ground a flat bevel; if it is set at any other angle the rounded corner will do the grinding and a concave bevel be the result. This feature will be appreciated by those who prefer a flat; stout edge for rough work, and a thin concave edge for fine work.

The shifting of the belts that drive the bed back and forth is accomplished by a simple arrangement of bell cranks inside the pedestal, one above and one below, connected by a rod with joints at either end. The lower crank is connected to the belt shifter, and the upper one extends up through the top of the base and is acted upon by adjustable dogs when the bed has travelled the required distance.

The arrangement is such that the bed can be adjusted at different angles without affecting the belt shifting operation; in fact, the bed can be swung while the machine is in motion. After the machine is started it requires little or no attention.

The carriage has an even traverse back and forth, and reversing is accomplished without noise or jar.

The shafts are steel and run in boxes lined with genuine babbitt metal.

These machines are manufactured by first-class workmen and are fully warranted.

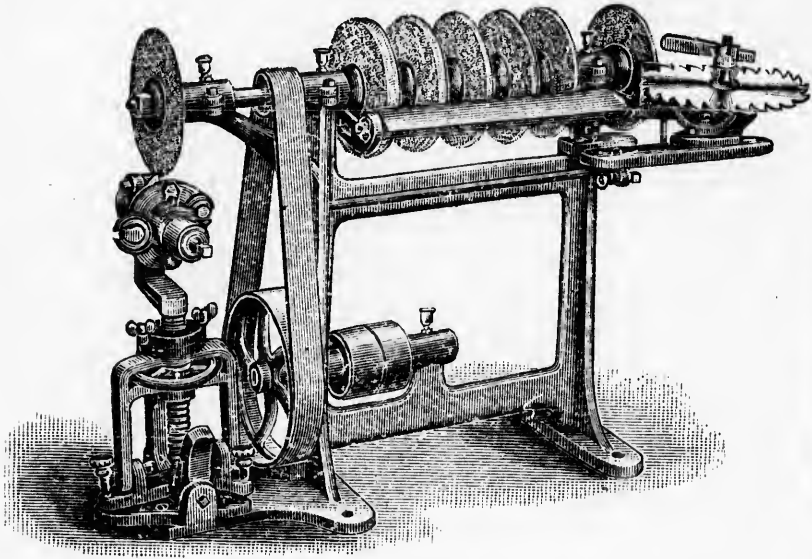
The emery wheels supplied with machines are 8 inches in diameter, $3\frac{1}{2}$ -inch face. They can be used up almost entirely. New wheels are furnished at \$4.25 each.

THE TIGHT AND LOOSE PULLEYS are 6 inches in diameter, and should run 1100 REVOLUTIONS PER MINUTE. Weight of 26-inch machine, boxed, 450 pounds.

We keep machines in stock with knife bars or holders suitable for light knives, but will furnish machines with bars suitable for any knife without extra charge.

owed.
00 00
12 00
25 00
40 00
55 00
37 00

ROGERS' COMBINE.



COMPRISING

- A TOOL GRINDER, carrying five emery wheels of different shapes and sizes, for knives and tools.
- A HEAD GRINDER, for Shimer heads, in combination or alone. A practical rig in every respect.
- A SAW GUMMER, simple and accurate.

PRICE LIST.

Tool Grinder, with 5 wheels.....	\$50 00
Head Grinding attachment 8in. dia.....	20 00
Saw Gumming attachment.....	12 00
Machine with all attachments.....	82 00
Head Grinder alone, complete.....	44 00

Send for Net Cash Prices.

Shim
The
war

as a
com
is no
suit
Not
than
shap
shav
tach
of ti

peni
join
the l
kept

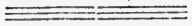
no c
have
of th
extr

wher
are
revo

E.



ROGERS' COMBINE.



Combined Moulding Bit, Tool, Circular Saw and Shimer Cutter Grinder. Just the machine for a tool room. These machines are gotten up in first-class style and are fully warranted.



THE HEAD GAINDER in combination or alone acts as a vise to hold the head while adjusting the cutters. It completes the work of sharpening, no files being used. There is nothing complicated about it, and it is quickly changed to suit any size of head or any angle or bevel on the knives. Not only does this machine do the work in much less time than it can be done by hand, but it keeps the cutters in good shape; the throats well cut out so as to give clearance for shavings, making the work easier on the head. This one attachment will pay for the machine in a short time in the item of time saving alone.



SAW SHARPENER. The Saw Gumming and Sharpening Attachment is very effective. It can be used for jointing the saw, and simple stops make the teeth uniform, the hook and depth of all teeth the same, so the saws can be kept in first-class order with very little trouble.



TOOL GRINDER. The gang of emery wheels needs no commendation. Every millman knows how handy it is to have various shaped wheels always ready. The shape of faces of these wheels can be varied to suit special uses without extra charge.



HEIGHT OF MACHINE to top of 8-in. wheels, 24-in.



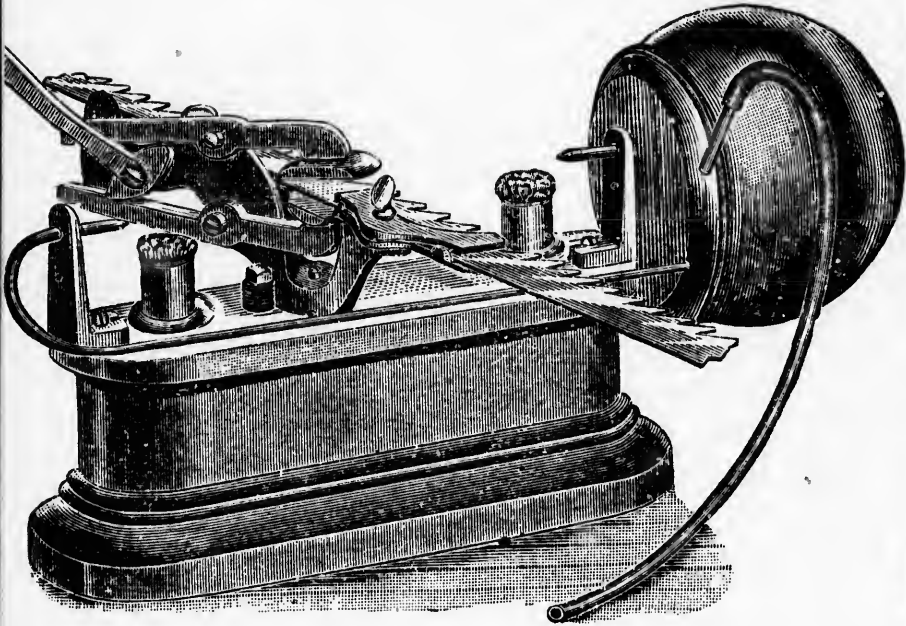
Weight of complete machine, 250 pounds. Emery wheels are 8 inches in diameter. The tight and loose pulleys are 4 inches in diameter $2\frac{1}{4}$ in. face, and should run 500 revolutions per minute.

s of dif-
ination

\$50 00
20 00
12 00
82 00
44 00

Rogers' Brazing Lamp.

FOR BAND SAWS UP TO 1¼ IN. WIDE,



This machine does away with tongs, kinks, curved and defective brazes.

The two flames meeting at the saw produce great heat. Saws are heated in less than 30 seconds

Sent on 10 days' trial to responsible parties.

DIRECTIONS— File the laps ; place the saw on the form with back to the straight edge, and clamp in place by tightening thumb screws ; clean the silver solder with fine sand paper and acid ; also the laps ; place the solder in the lap ; use plenty of powdered borax ; light lamps, fill the rubber globe by blowing in mouthpiece, watch until the saw is a cherry red, then press down on the lever, when the clamps will seize the saw firmly and give it _____ mper without any danger of checking or kinking the saw.

PRICE \$15.00

Send for Net Cash Price.

REVISED PRICE LIST OF EMERY WHEELS.

THICKNESS IN INCHES.

Rev per
minute

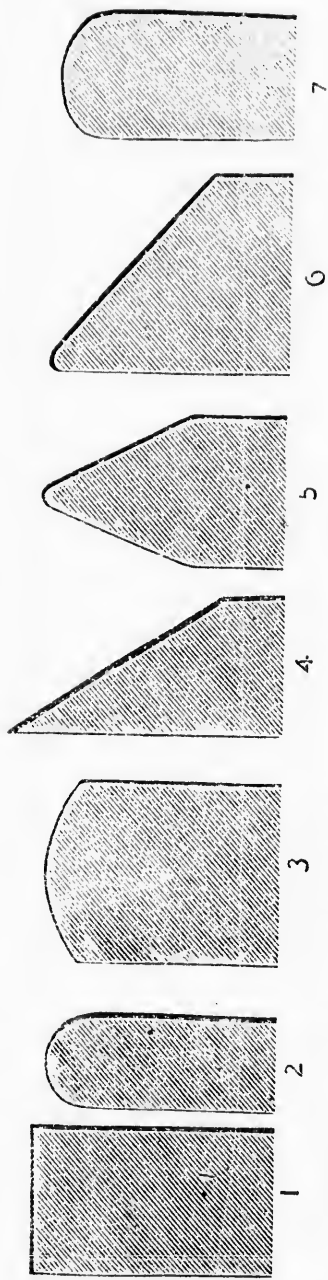
1/4	3/8	1/2	3/4	1	1 1/4	1 1/2	1 3/4	2	2 1/4	2 1/2	2 3/4	3	3 1/4	3 1/2	3 3/4	4
-----	-----	-----	-----	---	-------	-------	-------	---	-------	-------	-------	---	-------	-------	-------	---



REVISED PRICE LIST OF EMERY WHEELS.

DIAMETER IN INCHES.	THICKNESS IN INCHES.												Rev per minute			
	1/2	3/4	1	1 1/4	1 1/2	1 3/4	2	2 1/4	2 1/2	2 3/4	3	3 1/4		3 1/2	3 3/4	4
1 1/2	40	45	50	55	60	65	70	75	80	85	90	95	1 00	1 05	1 10	10000
2	50	55	60	65	70	75	80	85	90	95	1 00	1 05	1 10	1 15	1 20	10000
2 1/2	65	75	85	95	1 05	1 15	1 25	1 35	1 45	1 55	1 65	1 75	1 85	1 95	2 05	8000
3	80	95	1 10	1 25	1 40	1 55	1 70	1 85	2 00	2 15	2 30	2 45	2 60	2 75	2 90	7400
3 1/2	95	1 15	1 35	1 55	1 75	1 95	2 15	2 35	2 55	2 75	2 95	3 15	3 35	3 55	3 75	6400
4	1 10	1 35	1 60	1 85	2 10	2 35	2 60	2 85	3 10	3 35	3 60	3 85	4 10	4 35	4 60	5450
4 1/2	1 25	1 55	1 85	2 15	2 45	2 75	3 05	3 35	3 65	3 95	4 25	4 55	4 85	5 15	5 45	4900
5	1 40	1 80	2 20	2 60	3 00	3 40	3 80	4 20	4 60	5 00	5 40	5 80	6 20	6 60	7 00	4400
6	1 75	2 40	3 00	3 70	4 35	5 00	5 65	6 25	6 80	7 45	8 10	8 75	9 40	10 00	10 50	3600
7	2 15	3 00	3 85	4 70	5 55	6 40	7 25	8 10	8 90	9 70	10 50	11 30	12 10	12 90	13 70	3150
8	2 60	3 60	4 60	5 60	6 60	7 60	8 60	9 60	10 60	11 60	12 60	13 60	14 60	15 60	16 60	2750
9	3 10	4 35	5 60	6 75	7 50	8 75	10 00	11 25	12 50	13 75	15 00	16 25	17 50	18 75	20 00	2450
10	3 60	5 10	6 60	8 00	9 50	11 00	12 40	13 75	15 25	16 75	18 15	19 50	21 00	22 25	23 75	2200
12	4 00	5 75	7 35	9 00	10 10	12 25	14 00	15 70	17 40	19 00	20 75	22 25	24 00	25 75	27 40	1850
14	6 25	8 45	10 65	12 90	15 10	17 40	19 50	21 80	24 00	26 30	28 60	30 75	33 00	35 40	37 50	1600
16	8 00	10 85	13 70	16 50	19 40	22 25	25 00	27 90	30 75	33 50	36 40	39 25	42 00	45 00	48 00	1400
18	9 50	13 25	17 00	20 20	23 40	26 50	29 50	32 75	35 75	38 50	41 50	44 25	47 00	50 00	52 00	1250
20	12 00	16 00	20 50	25 00	29 00	33 50	38 00	42 50	47 00	51 50	56 00	60 50	65 00	69 50	74 00	1100
22	14 50	19 00	24 00	29 25	34 50	40 12	46 75	52 00	58 00	63 50	69 25	74 00	80 50	85 00	91 75	1000
24	17 00	22 00	28 00	34 36	40 43	47 00	54 00	60 64	67 00	73 78	80 00	86 92	93 00	105 00	112 00	925
30							87 50	109 00	127 00	153 00	188 00	219 00				735
36																500

For all Wheels thinner than 1 1/2 in. use list of 1 1/2 inch. N.B.—Wheels of any thickness between the above dimensions are listed the same as next size thicker. Write for Discounts.



DIRECTIONS FOR ORDERING EMERY WHEELS.

- State diameter, thickness, and size of Mandrel hole.
- For shape of face, give No. from diagram, or a drawing if different from them.
- Give number of revolutions of spindle or shaft.
- State kind of metal to be ground : e. g., cast or wrought iron, steel or brass, or for general purposes, etc.
- State if wheel is to grind surface only, or the edge of the article to be ground.
- State whether the article to be ground is held in the hand of the operator, or whether it is held mechanically and fed up to the wheel.

