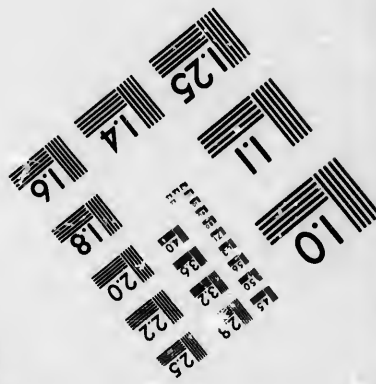
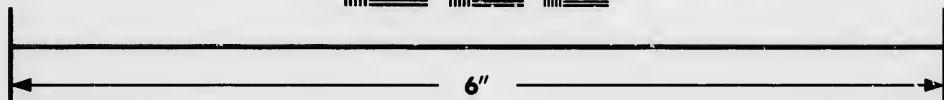
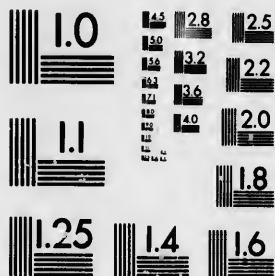


**IMAGE EVALUATION
TEST TARGET (MT-3)**



**Photographic
Sciences
Corporation**

23 WEST MAIN STREET
WEBSTER, MASS. 14580
(7.6) 872-4503

**CIHM/ICMH
Microfiche
Series.**

**CIHM/ICMH
Collection de
microfiches.**



Canadian Institute for Historical Microreproductions / Institut canadien de microreproductions historiques

© 1985

Technical and Bibliographic Notes/Notes techniques et bibliographiques

The Institute has attempted to obtain the best original copy available for filming. Features of this copy which may be bibliographically unique, which may alter any of the images in the reproduction, or which may significantly change the usual method of filming, are checked below.

L'Institut a microfilmé le meilleur exemplaire qu'il lui a été possible de se procurer. Les détails de cet exemplaire qui sont peut-être uniques du point de vue bibliographique, qui peuvent modifier une image reproduite, ou qui peuvent exiger une modification dans la méthode normale de filmage sont indiqués ci-dessous.

Coloured covers/
Couverture de couleur

Coloured pages/
Pages de couleur

Covers damaged/
Couverture endommagée

Pages damaged/
Pages endommagées

Covers restored and/or laminated/
Couverture restaurée et/ou pelliculée

Pages restored and/or laminated/
Pages restaurées et/ou pelliculées

Cover title missing/
Le titre de couverture manque

Pages discoloured, stained or foxed/
Pages décolorées, tachetées ou piquées

Coloured maps/
Cartes géographiques en couleur

Pages detached/
Pages détachées

Coloured ink (i.e. other than blue or black)/
Encre de couleur (i.e. autre que bleue ou noire)

Showthrough/
Transparence

Coloured plates and/or illustrations/
Planches et/ou illustrations en couleur

Quality of print varies/
Qualité inégale de l'impression

Bound with other material/
Relié avec d'autres documents

Includes supplementary material/
Comprend du matériel supplémentaire

Tight binding may cause shadows or distortion along interior margin/
La reliure serrée peut causer de l'ombre ou de la distortion le long de la marge intérieure

Only edition available/
Seule édition disponible

Blank leaves added during restoration may appear within the text. Whenever possible, these have been omitted from filming/
Il se peut que certaines pages blanches ajoutées lors d'une restauration apparaissent dans le texte, mais, lorsque cela était possible, ces pages n'ont pas été filmées.

Pages wholly or partially obscured by errata slips, tissues, etc., have been refilmed to ensure the best possible image/
Les pages totalement ou partiellement obscurcies par un feuillet d'errata, une pelure, etc., ont été filmées à nouveau de façon à obtenir la meilleure image possible.

Additional comments:/
Commentaires supplémentaires:

[Printed ephemera] 1 sheet (verso blank)

This item is filmed at the reduction ratio checked below/
Ce document est filmé au taux de réduction indiqué ci-dessous.

10X	12X	14X	16X	18X	20X	22X	24X	25X	28X	30X	32X
								✓			

The copy filmed here has been reproduced thanks to the generosity of:

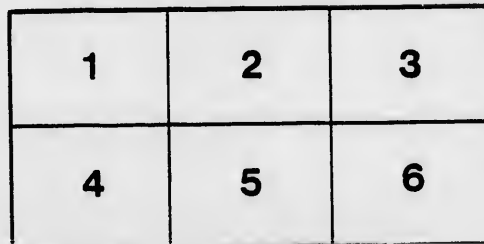
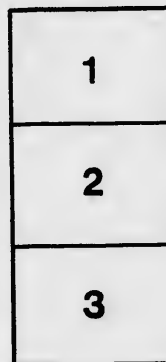
D. B. Weldon Library
University of Western Ontario
(Regional History Room)

The images appearing here are the best quality possible considering the condition and legibility of the original copy and in keeping with the filming contract specifications.

Original copies in printed paper covers are filmed beginning with the front cover and ending on the last page with a printed or illustrated impression, or the back cover when appropriate. All other original copies are filmed beginning on the first page with a printed or illustrated impression, and ending on the last page with a printed or illustrated impression.

The last recorded frame on each microfiche shall contain the symbol \rightarrow (meaning "CONTINUED"), or the symbol ∇ (meaning "END"), whichever applies.

Maps, plates, charts, etc., may be filmed at different reduction ratios. Those too large to be entirely included in one exposure are filmed beginning in the upper left hand corner, left to right and top to bottom, as many frames as required. The following diagrams illustrate the method:



L'exemplaire filmé fut reproduit grâce à la générosité de:

D. B. Weldon Library
University of Western Ontario
(Regional History Room)

Les images suivantes ont été reproduites avec le plus grand soin, compte tenu de la condition et de la netteté de l'exemplaire filmé, et en conformité avec les conditions du contrat de filmage.

Les exemplaires originaux dont la couverture en papier est imprimée sont filmés en commençant par le premier plat et en terminent soit par la dernière page qui comporte une empreinte d'impression ou d'illustration, soit par le second plat, selon le cas. Tous les autres exemplaires originaux sont filmés en commençant par la première page qui comporte une empreinte d'impression ou d'illustration et en terminant par la dernière page qui comporte une telle empreinte.

Un des symboles suivants apparaîtra sur la dernière image de chaque microfiche, selon le cas: le symbole \rightarrow signifie "A SUIVRE", le symbole ∇ signifie "FIN".

Les cartes, planches, tableaux, etc., peuvent être filmés à des taux de réduction différents. Lorsque le document est trop grand pour être reproduit en un seul cliché, il est filmé à partir de l'angle supérieur gauche, de gauche à droite, et de haut en bas, en prenant le nombre d'images nécessaire. Les diagrammes suivants illustrent la méthode.

ails
du
odifier
une
mage

errata
to

pelure,
on à

32X

CHANCERY

IN CHANCERY

BETWEEN

SARAH CASE

THOMAS COLE

WILSON and C

Parties in the M

Pursuant to the Decree on further
made in this Cause, and Dated respec-
tively, September, 1861, and the 20th Day
of the same month, the approbation of the Undersigned Master,
the following

REAL ESTATE

RY SALE!

ANCERY :

H CASEY, - - - - *Plaintiff,*
AND
AS COPP, by Bill, and JOHN
ON and CHARLES TAMBLYN, made
in the Master's Office, *Defendants.*

n further Directions, and of an Order
ted respectively the 3rd Day of Sep-
th Day of May, 1862; and with the
gned Master of this Court at London,

ESTATE!

REAL ESTATE

WILL

SOLD BY PUBLIC

AT MY

CHAMBERS in the

Dundas Street, in the City

FRIDAY, 27th DAY

AT 2 O'CLOCK IN THE

In One Lot, consisting of all and singular that certain lying and being in the Township of Adelaide, in the County of Middlesex, more or less, and being composed of the east half of Lot No. 29, in the Parish of Adelaide.

The Purchaser at the time of Sale is to pay down a of his purchase money to the Vendor or her Solicitor, and the remainder to be paid on the 27th day of July next, and upon such payment the Purchaser shall be entitled to possession of the said Lot.

The PROPERTY will be put up at a RESALE.

The Parties to the Suit, with the exception of the Vendor,

The Purchaser shall have the Conveyance prepared at his own expense.

In other respects the conditions of Sale will be the standing conditions of Sale.

Particulars and conditions of Sale may be had at the Law Offices of Messrs. Glyn & Co., 11, Abchurch Lane, London, and at my said Chambers.

Dated this 6th day of June, 1862.

ESTATE!

WILL BE

PUBLIC AUCTION!

AT MY

the ROBINSON HALL!

at, in the CITY of LONDON, on

DAY OF JUNE, 1862

at HALF PAST THREE O'CLOCK IN THE AFTERNOON.

Whereof certain parcel or tract of Land and Premises, situate, County of Middlesex and Province of Canada, containing by admeasurement 100 acres, more or less, situate at No. 29, in the 1st Concession north of the Egremont Road, in the said Town-

shall be sold for cash, and the Purchaser shall pay down a deposit in the proportion of £10 for every £100 of the purchase money, and the remainder of the purchase money, with interest, from the day of sale is to be paid on the day of sale. The Purchaser is to be entitled to a Conveyance and to be let into possession. The sale is to be by **RESERVED BIDDING** by the Plaintiff.

The conditions of the Vendor, are to be at liberty to bid.

The Purchaser is to pay the purchase money at his own expense and tender the same for execution.

The conditions of sale of this Court.

For further particulars apply to the Law Offices of John Wilson and Charles F. Goodhue, Esquires, in the City of

J. SHANLY,

Master in Chancery at London.

