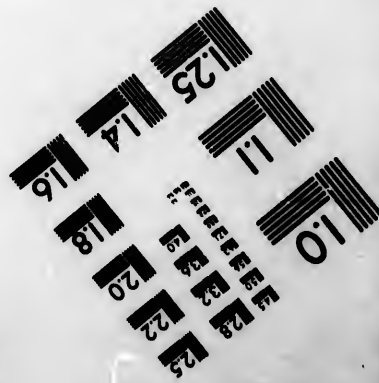
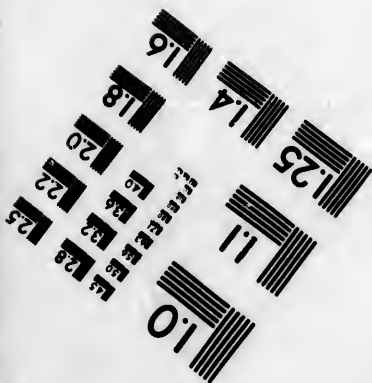
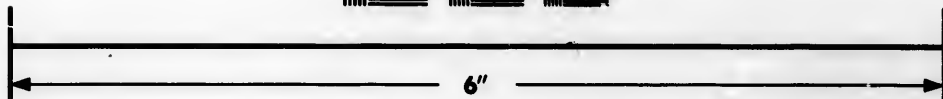
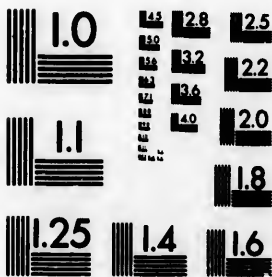


**IMAGE EVALUATION
TEST TARGET (MT-3)**



**Photographic
Sciences
Corporation**

23 WEST MAIN STREET
WEBSTER, N.Y. 14580
(716) 872-4503

**CIHM/ICMH
Microfiche
Series.**

**CIHM/ICMH
Collection de
microfiches.**



Canadian Institute for Historical Microreproductions / Institut canadien de microreproductions historiques

© 1984

Technical and Bibliographic Notes/Notes techniques et bibliographiques

The Institute has attempted to obtain the best original copy available for filming. Features of this copy which may be bibliographically unique, which may alter any of the images in the reproduction, or which may significantly change the usual method of filming, are checked below.

L'Institut a microfilmé le meilleur exemplaire qu'il lui a été possible de se procurer. Les détails de cet exemplaire qui sont peut-être uniques du point de vue bibliographique, qui peuvent modifier une image reproduite, ou qui peuvent exiger une modification dans la méthode normale de filmage sont indiqués ci-dessous.

- Coloured covers/
Couverture de couleur
- Covers damaged/
Couverture endommagée
- Covers restored and/or laminated/
Couverture restaurée et/ou pelliculée
- Cover title missing/
Le titre de couverture manque
- Coloured maps/
Cartes géographiques en couleur
- Coloured ink (i.e. other than blue or black)/
Encre de couleur (i.e. autre que bleue ou noire)
- Coloured plates and/or illustrations/
Planches et/ou illustrations en couleur
- Bound with other material/
Relié avec d'autres documents
- Tight binding may cause shadows or distortion along interior margin/
La reliure serrée peut causer de l'ombre ou de la distorsion le long de la marge intérieure
- Blank leaves added during restoration may appear within the text. Whenever possible, these have been omitted from filming/
Il se peut que certaines pages blanches ajoutées lors d'une restauration apparaissent dans le texte, mais, lorsque cela était possible, ces pages n'ont pas été filmées.
- Additional comments:/
Commentaires supplémentaires:

- Coloured pages/
Pages de couleur
- Pages damaged/
Pages endommagées
- Pages restored and/or laminated/
Pages restaurées et/ou pelliculées
- Pages discoloured, stained or foxed/
Pages décolorées, tachetées ou piquées
- Pages detached/
Pages détachées
- Showthrough/
Transparence
- Quality of print varies/
Qualité inégale de l'impression
- Includes supplementary material/
Comprend du matériel supplémentaire
- Only edition available/
Seule édition disponible
- Pages wholly or partially obscured by errata slips, tissues, etc., have been refilmed to ensure the best possible image/
Les pages totalement ou partiellement obscurcies par un feuillet d'errata, une pelure, etc., ont été filmées à nouveau de façon à obtenir la meilleure image possible.

This item is filmed at the reduction ratio checked below/
Ce document est filmé au taux de réduction indiqué ci-dessous.

10X	12X	14X	16X	18X	20X	22X	24X	26X	28X	30X	32X
<input type="checkbox"/>	<input type="checkbox"/>	<input type="checkbox"/>	<input type="checkbox"/>	<input type="checkbox"/>	<input type="checkbox"/>	<input type="checkbox"/>	<input checked="" type="checkbox"/>	<input type="checkbox"/>	<input type="checkbox"/>	<input type="checkbox"/>	<input type="checkbox"/>

The copy filmed here has been reproduced thanks to the generosity of:

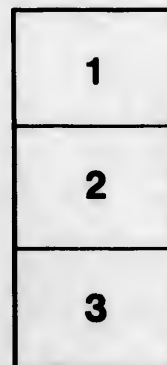
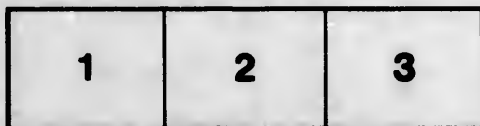
Library
Environnement Canada
Chaudière Branch
(Parcs Canada)

The images appearing here are the best quality possible considering the condition and legibility of the original copy and in keeping with the filming contract specifications.

Original copies in printed paper covers are filmed beginning with the front cover and ending on the last page with a printed or illustrated impression, or the back cover when appropriate. All other original copies are filmed beginning on the first page with a printed or illustrated impression, and ending on the last page with a printed or illustrated impression.

The last recorded frame on each microfiche shall contain the symbol \rightarrow (meaning "CONTINUED"), or the symbol ∇ (meaning "END"), whichever applies.

Maps, plates, charts, etc., may be filmed at different reduction ratios. Those too large to be entirely included in one exposure are filmed beginning in the upper left hand corner, left to right and top to bottom, as many frames as required. The following diagrams illustrate the method:



L'exemplaire filmé fut reproduit grâce à la générosité de:

Bibliothèque
Environnement Canada
Sucursale Chaudière
(Parcs Canada)

Les images suivantes ont été reproduites avec le plus grand soin, compte tenu de la condition et de la netteté de l'exemplaire filmé, et en conformité avec les conditions du contrat de filmage.

Les exemplaires originaux dont la couverture en papier est imprimée sont filmés en commençant par le premier plat et en terminant soit par la dernière page qui comporte une empreinte d'impression ou d'illustration, soit par le second plat, selon le cas. Tous les autres exemplaires originaux sont filmés en commençant par la première page qui comporte une empreinte d'impression ou d'illustration et en terminant par la dernière page qui comporte une telle empreinte.

Un des symboles suivants apparaîtra sur la dernière image de chaque microfiche, selon le cas: le symbole \rightarrow signifie "A SUIVRE", le symbole ∇ signifie "FIN".

Les cartes, planches, tableaux, etc., peuvent être filmés à des taux de réduction différents. Lorsque le document est trop grand pour être reproduit en un seul cliché, il est filmé à partir de l'angle supérieur gauche, de gauche à droite, et de haut en bas, en prenant le nombre d'images nécessaire. Les diagrammes suivants illustrent la méthode.

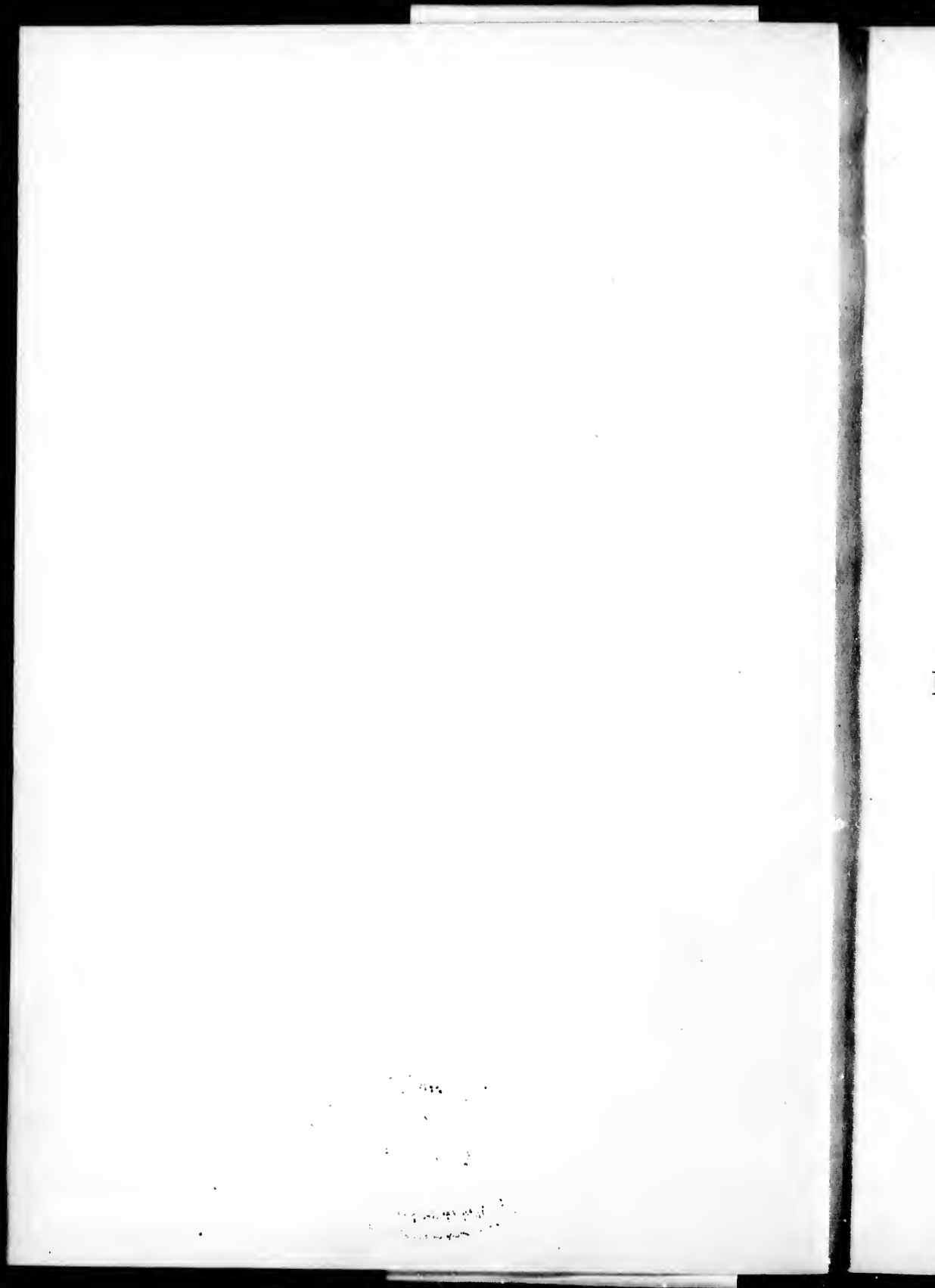
•
détails
s du
modifier
r une
image

s

errata
to

pelure,
n à





10546.

A
BRIEF DESCRIPTION
OF
NOVA SCOTIA,
WITH
PLATES
OF
THE PRINCIPAL HARBORS ;
INCLUDING A
Particular Account
OF THE
ISLAND OF GRAND MANAN.

BY
ANTHONY LOCKWOOD,
PROFESSOR OF HYDROGRAPHY,
ASSISTANT SURVEYOR-GENERAL OF THE PROVINCES OF N. S. AND C. BRETON.

London :
PRINTED FOR THE AUTHOR,
By G. Hayden, Brydges Street, Covent Garden ;
AND SOLD BY CADELL AND DAVIES, STRAND.

1818.



F
5255
.L6

TO

HIS EXCELLENCY THE RIGHT HON.

THE

E A R L D A L H O U S I E,

GOVERNOR OF NOVA SCOTIA, &c. &c. &c.

TO THE

HON. MEMBERS OF HIS MAJESTY'S COUNCIL,

AND TO

THE MEMBERS OF THE ASSEMBLY,

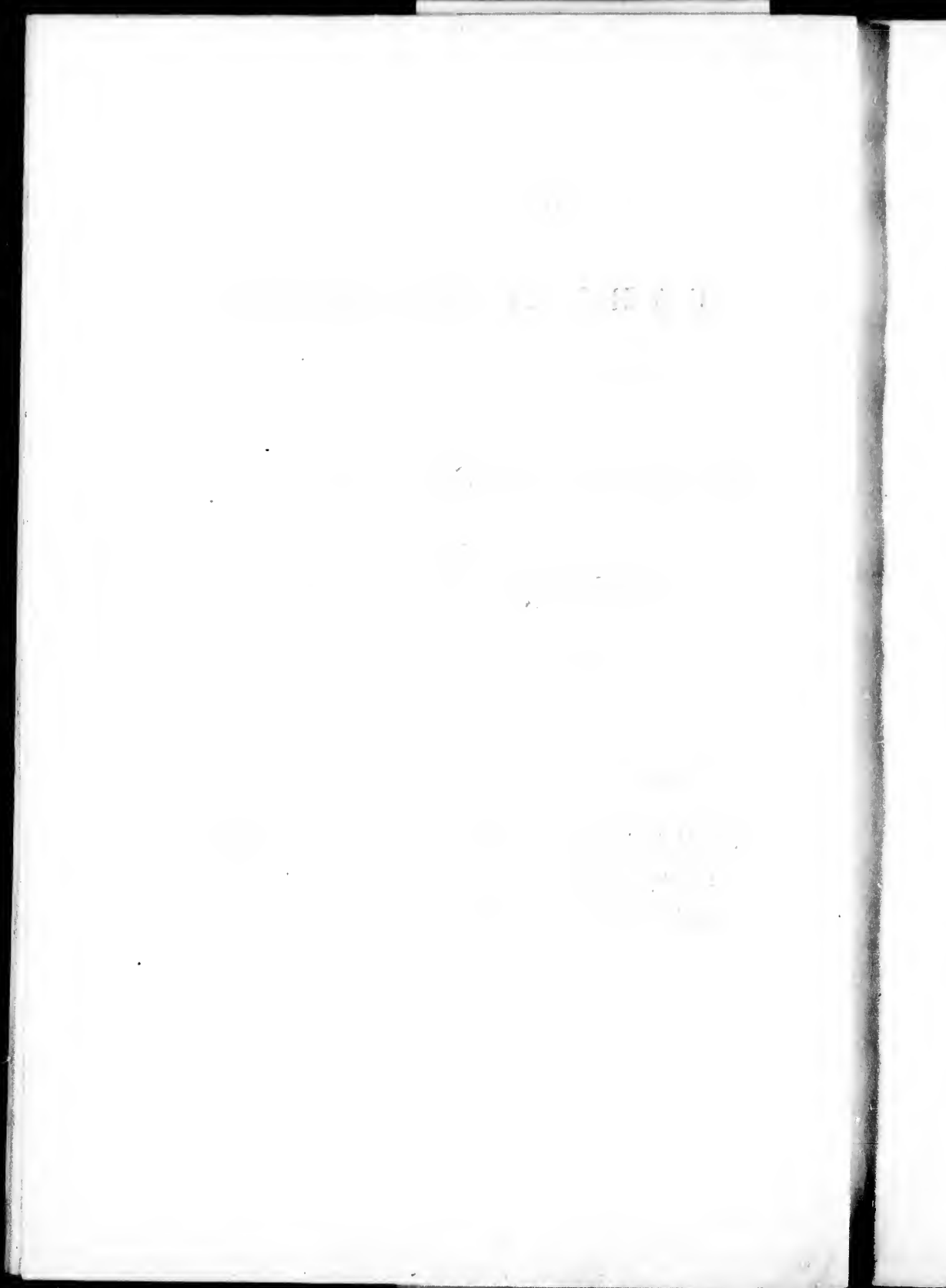
THIS WORK IS DEDICATED;

AND AS

AN INFANT OF PROMISE, IS OFFERED TO THEIR NOTICE,

Should it be received under a favourable consideration, no
Industry or Care will be wanting, to mature its growth, and
render it worthier of the Public, by

THE AUTHOR.



INTRODUCTORY

R E M A R K S.

A MERE technical description of the Harbours of any country can afford little entertainment: but those of Nova Scotia, whose features are so nearly similar, furnish very scanty materials for descriptive composition: this scantiness is still more contracted by the want of leisure, and the strong vicissitudes of the climate, cramping exertion; but probably more by a limited capacity.

Gladly would I give this crude mass of information to any person of talent, possessing a local knowledge of the country, who would take the pains to blend with it a particular account of the Province; by whose hand it might be cleared of its imperfections, and weeded of its orthographical and other errors. Improved by such observations and sentiments as the subject would admit, the work might find a place in the libraries of the respectable men of our community, and convey to our good

countrymen, at their English firesides, an improved idea of Nova Scotia; and the imaginary wilderness, with its bears and monsters, give place to Acadia, with her happy, exceedingly happy features.

However, as I despair of such assistance, and an account of the different harbours may benefit, if not preserve, many valuable persons, plain truth must substitute decoration. Those for whom it is chiefly intended, will receive it as a code of instructions, written in their own style, and will be guided clear of the dangers it points out, into places of safety, where they can rest at ease from their labours, watchless.

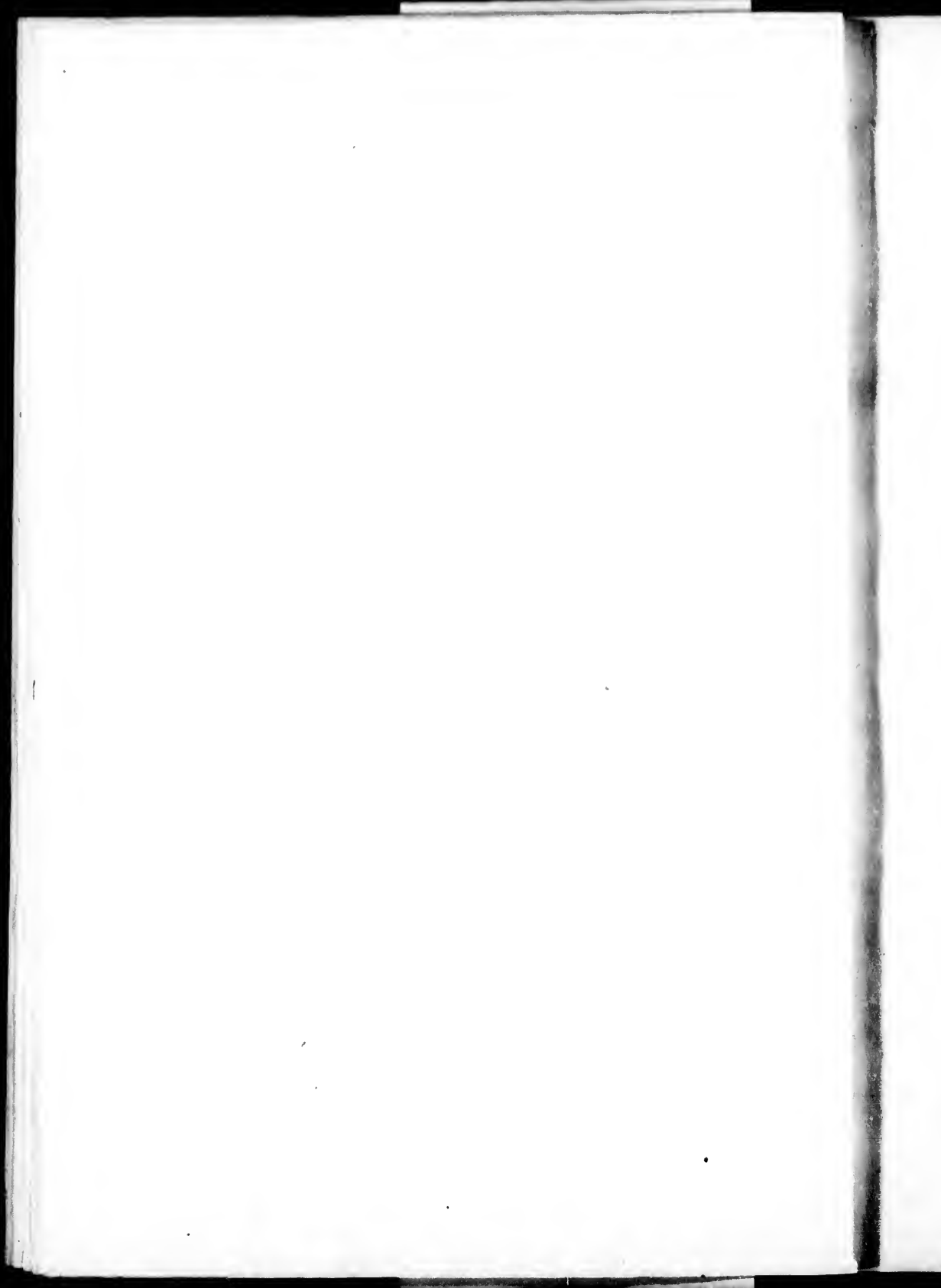
Acting under the orders of the Lords Commissioners of the Admiralty, and subject to the control of the Naval Commander in Chief, my time is consequently theirs: therefore, having only such periods to devote to this work as a relaxation from my professional duties will admit, much cannot be expected.

Let the eye of scrutiny charitably scan its imperfections; and should it be thrown open to the delicate vision of quick perception, a consideration of the Author's incessant servitude will soften its monotonous discordance. On ship-board, one set of ideas frequently serve a voyage. Deprived of refined female society, which tends to perfection more than any plan of education, and without which the manners are harsh and rude; sailors, who see most, and before whom nature derobes, are seldom gifted with descriptive powers; traversing this terraqueous globe, and pursuing research as a pleasing duty, what exquisite delight should I have derived, had Providence permitted me to give to

the world, in suitable language, a just description of the various scenes that have passed in review, during a period of twenty-five years' incessant peregrination.

Secured from necessity in age, by the liberality of the Board I have the honor to serve, and enjoying an income exceeding my wants, I disclaim even the slightest wish to derive pecuniary benefit from this humble attempt to be useful: if it will pay the expence of the publication, I shall be satisfied.

The Hon. Charles Morris, Surveyor General of the Province, furnished me with many documents, &c. and trebly enhanced the favor by his manner of conferring it. From these papers were drawn much of my information, and the permission of free access to the office essentially aided me.



A

BRIEF DESCRIPTION

OF

NOVA SCOTIA.

NOVA SCOTIA lies within the 43rd and 46th degree of North Latitude, and between the 61st and 67th degree of Longitude, West from the Greenwich meridian. It is connected with the body of North America, by an Isthmus, about 20 miles wide, which forms the boundary and Eastern line of New Brunswick.

By a fair computation it contains 15617 square miles, or 9994880 acres: one third of this superficies is occupied by lakes of various shapes and sizes, spread in all directions on the face of the Peninsula. There is no point in the Province 30 miles from navigable water.

The Southern margin is broken, rugged, and barren, with very prominent features, deep indents, and craggy islands; with ledges

C

The usual mode of finding the mean is incorrect, particularly in these countries, where the changes are sudden and frequent: the common periods for observing it are before sun-rise, at 2 P.M. and 9 P.M. The cold is most intense at 2, 3, or 4 o'clock in the morning; therefore the mercury is seldom observed when lowest, and never taken into the reduction: while the influence which the sun maintains at his meridian is invariably admitted. The third hour in the afternoon, and 10 at night, would, in my opinion, be near the truth. What I conceive to be accurate reductions, are marked †

The population has been very differently estimated, nor will it be easy to ascertain it exactly, as no census has ever been taken. From the best information, it may be stated at 120,000; as opinion varies from 80 to 160.

The Aborigines were Indians, similar to those found in the other parts of North America: the most enterprising of these people have deserted the Province, following, as it were, their means of subsistence to the less frequented wilds of Labrador, Canada, Cape Breton, and Newfoundland. The few that are left, say 350 families, 1500 persons, wander from place to place, in all the abjectness of deplorable stupidity. The attempts hitherto made to improve their condition, have not only been abortive, but even productive of evil, by lessening their little energy, and teaching them to expect by begging, what they ought to obtain by common industry.

The Roman Catholick priests have an ascendancy over them, that checks, in some degree, their propensity to strong drink.

Through the medium of these persons, who are actively intelligent, ought certainly all benefits, or what may be intended as such, to be conveyed to them. Their ingenuity appears to be limited to the composition of trifling articles of bark and porcupines' quills, and to have long been at its zenith of improvement. Their honesty, which is exemplified in many instances, appears to arise from apathy; and if the remaining few possessed activity enough to follow their brethren, the Province would be altogether relieved of a useless, idle, filthy race, whose disposition to ramble, and distaste to all social comforts and civilized life, will ever leave them in their present degraded state. One instance will suffice to shew the impossibility of enticing the Indians to any plan suggested by our ideas of decency and comfort.

The government of Massachussets granted to about 50 families, under the immediate inspection of a respectable missionary, 200 acres of excellent land, improved ready for their use; and as a farther inducement, built for them a chapel. Ten years have these people held their fair possessions, witnessing the progress of the surrounding settlers, from poverty to respectable ease, without the least effort to benefit by their example. These, their characteristic traits, are unalterable. They hunt, clothe, and build, the same as usual, and I believe not one of them shews the least disposition to the mechanic arts.

Should any further attempts be necessary to improve them, would they not be most usefully employed in improving the roads, or forming new ones? in felling and clearing new lands, preparatory to settling them? In thus giving them labour proportionable to their present habits, their wants might, without

much loss, be supported by the Government, as a kind of compensation for its bounty, would accrue to the Province.

The abuse of humanity is an excitement to dwell a little longer on this subject. The Indian families on the Shubenaccadie, aided so immediately under the eye of Government, will doubtless substantiate the unpleasant truth, that their uncivilized habits are unconquerable, and turn the tide of that bounty, hitherto so ill applied, to the log houses of the poor settlers, immured with large families, in forests that conceal their wretchedness and rags.

Whatever tends to improve the condition of men, is an object desirable to every feeling mind; and in considering the state of the Indians, great caution is necessary to distinguish between change and improvement. Men of common experience must have witnessed the pain, the disappointment, and discomfiture that has resulted from a mistaken notion of conferring happiness.

Lord Glenthorn rendering his nurse miserable by bettering her condition, (immediately in point) although the picture of fancy, is wide of caricature. ?

The exemplary people called Quakers, in Pennsylvania, have, with a persevering patience peculiar to themselves, tried every art that humanity could devise, to instruct and to infuse into the minds of the Indians, whom they have collected, the ideas of cleanliness, order, and association: affording them example, precept, and every possible inducement to industry and art. What has resulted?

An Indian never can be cured of the wandering habit that he has imbibed ; all attempts to settle them have been found to establish this fact. Even the infants, taken from their tribe, cannot be civilized.

The banks opposite the coast, home to the shore, abound in excellent fish: Cod, Haddock, Halibut, Polluck, and various others.

Americans, alive to the value of this inexhaustible source of wealth, lie at anchor 15 or 20 leagues in the offing, in numbers, well equipped. Their Chebucto boats, from 25 to 70 tons, ride in the middle of the ocean, with buoyancy and ease ; while our miserably constructed and ill furnished vessels, hover near the harbors, fearful of being caught by a gale.

The harbor of Halifax, the capital, latitude $44^{\circ} 40'$ N. and $63^{\circ} 40'$ West longitude, is large enough to contain any number of shipping in perfect safety. It lies nearly North and South, about 16 miles in length, terminating in a beautiful sheet of water called Bedford Bason, within which are ten square miles of safe anchorage.

The town is seated on the declivity of a peninsula, at the West side of the harbor, ten miles from its mouth. The irregularity of the buildings, and their elevation one above another, form an imposing and picturesque view.

miles West of
entrance A light-house on a small island marks the entrance: the lantern is elevated above the sea 210 feet. A small party of artillery are stationed here to attend signals, with two 24-pounders

as alarm guns. By the attention of these men, several shipwrecks have been prevented. His Majesty's ship *Bacchante*, in the early part of last year, ran within the breakers; and without the timely alarm of the island guns, would probably have been lost.

S. by E. $2\frac{1}{2}$ miles from the light-house, lies the Henery rock, with 8 feet water on it; E. N. E. one mile from this, is another rock, 12 feet under water; both exceedingly dangerous, and not generally known. The other dangers in this neighbourhood, are distinctly marked on the large sheet of Halifax, and common attention to the directions will ensure safety to the stranger.

Halifax was founded in 1747, under the Earl of Halifax, and settled in 1749; General Cornwallis was then appointed Governor of the Province, by whose directions the town was laid out, and the Peninsula, containing 3,000 acres, divided among the inhabitants, then consisting of 3,000 persons.

Since that period it has been governed by

General Hopson	in 1752
Governor Lawrence	1756
Rd. Monckson, Esq.	Aug. 17, 1757
Justice A. Belcher	Oct. 1761
Gov. Ellis, appointed, never sworn into office . .	1761
Gov. Wilmot, 1763, died	1766
Hon. Michael Franklin, Lieut.-Gov. 1766, continued two months	
Gov. Francis Legge	1773
Lieut-Gov. Arbuthnot	1776

Lieut.-Gov. Richard Hughes	1778
Lieut.-Gov. Sir And. Hammond	1781
John Parr, 1782, died	1791
Richard Bulkely, president and commander in chief, Nov. 26, to May 14	1791
Lieut.-Gov. Sir John Wentworth, arrived Jan. and sworn, May	1792
Lieut.-Gov. Sir G. Prevost, Jan. 17	1808
Sir J. C. Sherbrooke, Aug. 19	1811
Earl Dalhousie.	

Opposite Halifax, on the Eastern side of the harbor, which is there about nine-tenths of a mile wide, the town of Dartmouth was laid out in 1750, and settled: but in the war of 1756, the Indians collected in great force on the Basin of Mines, ascended the Shubenaccadie river in their canoes, and at night, surprising the guard, scalped or carried away most of the settlers. From this period the settlement was almost derelict, till Governor Parr, in 1784, encouraged 20 families to remove hither from Nantucket, to carry on the South Sea fishery. The town was laid in a new form, 1500*l.* granted by the provincial assembly to erect buildings: the spirit and activity of the new settlers, created the most flattering expectations of success. Unfortunately, in 1792, the failure of a house in Halifax, extensively concerned in the Whale-fishery, gave a severe check to the Dartmouth establishment, which was soon after totally ruined. A Mr. Stokes was employed by the merchants of Milford in England, to persuade the Nantucket settlers to remove thither: the offers were too liberal to be rejected, and the Province lost these orderly and industrious people, except Seth Coleman's family, whose great

and disinterested exertions in behalf of the poor, have secured him the favourable opinion of all men, whose approbation is valuable.

The lands behind Dartmouth, are increasing in population and agricultural improvement, which has had some effect in recovering the town. It is contemplated to open a communication by canals, connecting the Shubenaccadie with the harbor at Dartmouth: this is evidently practicable; but it is questionable, if the country be sufficiently populous, to justify so expensive a labour.

At the close of the revolutionary war, a number of respectable loyalist families from America, brought to Halifax their property, and became residents; and by their capital, increased the growing importance of the town.

During the late war, it became the general rendezvous of our ships, consequently the resort of their prizes, which has materially enriched the place, and extended its commerce. The military and naval arsenals, the public hospitals, the ordnance, and other establishments, have added to its magnitude, and increased its consequence.

The military, have excellent quarters: 3,000 men, with their proportion of officers, can be comfortably accommodated without encumbering the town.

The naval yard is seated above the town; the Commissioner's house, and other buildings of the establishment, add much to the beauty of the scenery which presents itself, in ascending the

harbor. In the late war, a vast number of shipping refitted here, and the mass of labour and duty performed on them, are strong proofs of its good regulation and order.

North of the naval yard, and adjoining, stands the naval hospital, with a range of new houses for the officers of that establishment: the buildings are of wood, convenient and spacious.

A rude inelegant square building of stone, is erected on the hill above the hospital, intended as a residence for the naval commander-in-chief. It will probably possess every convenience, and beauty appears not a requisite: it commands a view of the harbor and town.

Halifax, with its suburbs, is composed of 1200 houses, 10,000 inhabitants, two Episcopal Churches, one Scotch Church, (St. Matthews,) two Methodist Chapels, one Anabaptist Meeting, one Roman Chapel, (St. Peter's,) Government House, and the Province Building. The latter, built of free stone, and choice materials, is allowed by connoisseurs, to be a piece of excellent architecture.

South-eastern coast from Halifax to Cape Canso, is environed with dangerous ledges, to approach which, requires good charts and confidence. Possessing these a stranger may pursue his route, or take shelter in perfect safety, and the greater the apparent danger, the less he has to apprehend; as the sunken rocks break in coarse weather, shewing the passages between them.

The points and headlands, jutting into the sea, present the unfoldings of as good harbors as any in the world; and between the capital, and the eastern extremity of the Province, are twelve ports, capable of receiving ships of the line, and fourteen others, with capacity to shelter merchant vessels abounding in wood, water, fish, and other supplies. Des Barre's plans of the harbors, as well as the general chart of the Province, are published on so extensive and expensive a plan, that precludes the possibility of those possessing them who need them most. All other charts extant of Nova Scotia, are miserably defective and contradictory.

It may not be improper to adduce an instance or two, of their differences :

Cape Sable.	Rios' Tables	N. 44° 22' 4"	W. 65° 39' 15"
	Laurie and Whittle	43 26	65 34 20
	Arrowsmith	43 26	65 37
	Des Barre's	43 26	65 34 30

BRAZIL ROCK.

Laurie and Whittle's book of directions:—"This is a very dangerous rock, being dry at low water; there are full 30 fathoms all round it."

Des Barre:—"The Brazil is a small flat rock, with 12 feet of water, and within a cable's distance all round it, you have from

six to eight fathoms: it lies E. by S. $\frac{1}{4}$ S. distant three leagues from Cape Sable.

Holland's Chart, published by Laurie and Whittle, has it S. S. E. nine miles from Cape Sable. In page 9 of the same Chart-sellers book of directions, speaking of Port Mntoon, he says, "you may turn in with a leading wind."

Errors will creep in by inattention to the printing, or the want of sound information. It therefore becomes the duty of those who have the means, to correct them.

GEORGE'S BANK

Laurie and Whittle's
Book of directions
for North America,
1810.

Page 38. Shoal ground of George's Bank, lies in
Lat. $41^{\circ} 38'$ N. $67^{\circ} 56'$ W. Long.

Page 24. The shoalest part of this bank, lies in Lat.
 $44^{\circ} 12'$ N. it has on it from 14 to 4 fathoms,
and in some places only 10 feet.

Blunt's American Coast Pilot,
Page 167.

George's Bank shoals, lie in $41^{\circ} 55'$ N. and
are very dangerous, having in some places
only two or three feet water on them:
surrounded two or three leagues by rips
or breakers which are very dangerous,
irregular, and a rapid tide that sets over
them most of the time, to the southward.

Blunt's Latitude and Longitude
Tables.

{ Lat. $41^{\circ} 45'$ N. Long. $67^{\circ} 51'$ W.
41° 30' N. 67° 27' W.

The pilot of the *Bulwark* declared, in the presence of Captain Milne, myself, and others, that he had landed on the shoal part of George's Bank, and that he believed it dried for at least six miles, and was composed of fine sand. Many of the Cape Cod fishermen assert, they have seen the gulls sitting on it; while others positively insist, that the only danger exists in the heavy and cross sea, caused by the current running forcibly over the uneven ground. These contradictory accounts, as to the position, the danger, and extent of these places, tend more to perplex than inform. Many others might be pointed out, but these are thought sufficient to raise a doubt, and ought to prevent a reliance upon error, until experience guides the selection, and such charts only are used as are accurate.

No expence has been spared, even to the sacrifice of the common comforts of life, in order to be in possession of the best instruments. These were made by Mr. E. Troughton, and in their accuracy may be placed implicit faith.

The original names of the places are restored, by which only they are known to the inhabitants and fishermen. Des Barres, in attaching to them the names of noblemen, or men in power, has made his charts of less value; and in one or two instances, has created serious blunders. Inquire of the people of Jedore for Port Egmont, or those of Sheet Harbor for Port North, they know them not, nor would they ever be induced to adopt them. Jestico, a harsh, unpleasant, and unmeaning name, is preferred to Port Hood, although the latter is more pleasing to the ear, and pronounced and recollected with ease: all attempts

to change the rude Indian names for others of a finer texture have failed; even New Jerusalem and Acadia, have expired.

DIRECTIONS FOR THE HARBOR.

IN approaching from the westward, round the light-house, at the distance of a short league. To avoid the sunken rocks which lie to the southward, when the light bears N. W. by N. haul in N. by W. The flag staves on Citadel Hill, above the town, are distinguishable a considerable distance. By keeping them open of Sandwich Point, you are led clear of the Bell, Litchfield, and Mars rocks, on the West side; and the Rock Head and Thrumb Cap to the East. When arrived at Sandwich Point, which is bold, keep Chebucto Head in sight, by not allowing it to shut in. This plain mark will lead in the fair way home to George's Island, leaving Point Pleasant shoals on the left, and M^cNab's shoal on the right: round the Island either side, and anchor where you please, in 6, 10, or 13 fathoms, muddy bottom. From George's Island to the confluence of Sackville River, with Bedford Bason, a distance of seven miles, there is not a single obstruction.

The men of war usually anchor off the naval yard, which a stranger may easily distinguish by the masting sheers. The merchant vessels discharge their cargoes, and take in their lading, along-side the wharves.

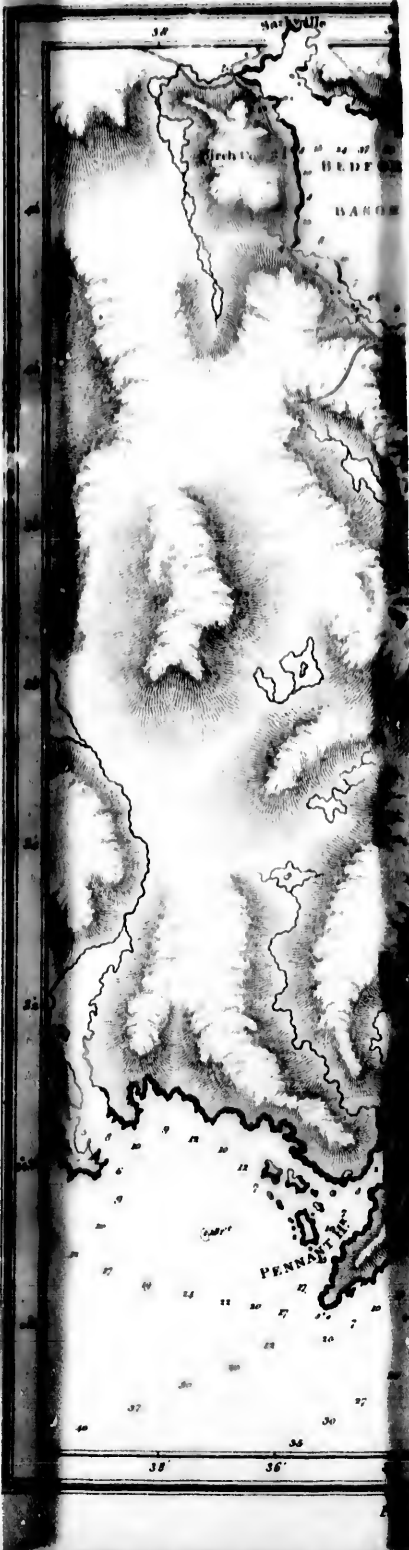
It is necessary, coming from the eastward, to steer for the

ure have

ouse, at
n rocks
. by N.
ove the
keeping
e Bell,
e Rock
andwich
by not
the fair
goals on
Island
atoms,
ence of
a miles,

which a
The
lading,

for the

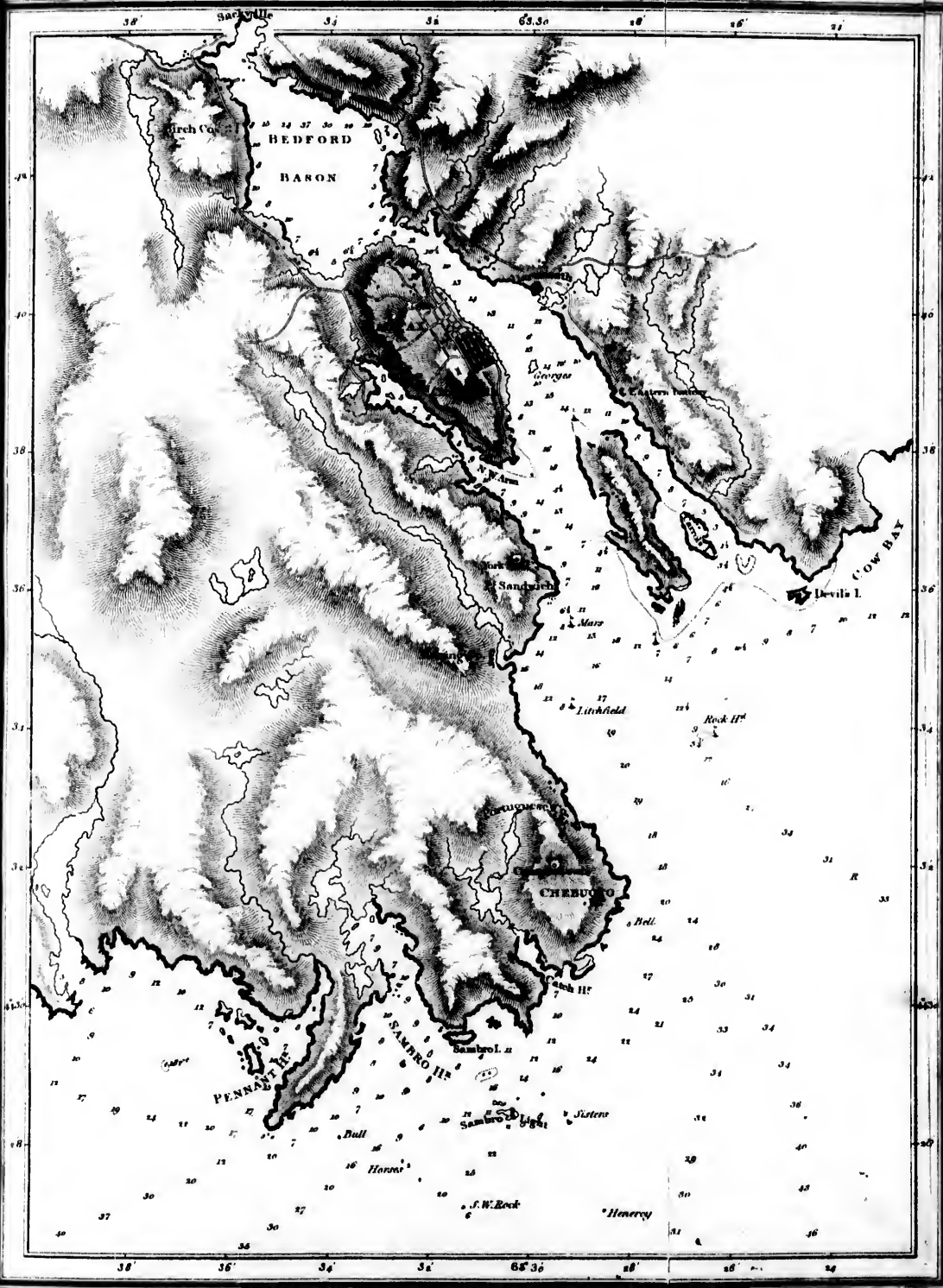


are on,

tending
lauger's
reers, is
on an
eans of
a safe
urrence
. And
hinery,
the lee
s mud
with the
l tower

wallis,
lab for
worth
y good
much
a-weed

e main
8 feet
small
ttom.



to chan
failed;

IN app
the die
which
haul in
town, a
them c
Litchfie
Head a
Point,
allowing
way ho
the left
either s
muddy
Sackvil
there is

The
stranger
mercha
along-si

It is

light-house, or Chebucto Head, until the leading marks are on, which are to be followed as before directed.

Sherbrook Tower stands on the spit of gravel extending towards Point Sandwich, from M^cNab's Island, called Mauger's Beach. Major Wright, the Commanding Officer of Engineers, is constructing a small light-house near the tower, upon an exceedingly good plan, to shew an interior light, by means of which vessels may enter the harbor, and be guided to a safe anchorage. This light will, in all probability, prevent a recurrence of the crowd of accidents by shipwreck on the Thrumb Cap. And if a bell be attached to it, to sound in fogs, worked by machinery, it will be an improvement. Northward of this, under the lee of the beech, is good anchorage, from 9 to 4 fathoms mud, called M^cNab's Cove; the best shelter is in 7 fathoms, with the Beach and Point Sandwich locked; and George's Island tower touching the N. W. part of the Island.

The Island now called M^cNab's was granted to Lord Cornwallis, in the year 1788, and sold by His Lordship to Mr. M^cNab for a thousand pounds. This property is now considered worth 15 or 18,000 pounds. It contains 1090 acres of tolerably good land; and being for the most part under cultivation, adds much to the beauty of the harbor. The vast quantities of sea-weed thrown on its shores, used as manure, is a great acquisition.

The S. E. passage formed by M^cNab's Island; and the main land, is obstructed by a sand bar at the South end, with 8 feet on it at low water: therefore it can be used only by small vessels. Within the bar is 6 to 11 fathoms, soft muddy bottom.

Herring Cove is inhabited by forty Irish families, who subsist by fishing and piloting. The shores of this nook are a body of solid rock; and small vessels lie perfectly sheltered in shoal water.

His Majesty's Frigate *Tribune's* scene of calamity, at the West side of the entrance of this place, on the 23rd of November, 1797, would be a subject worthy of the pencil of the first artist. In a few hours the fragment of her crew consisted of thirteen persons, one of whom, Mr. Galvin, a master's mate, was the unfortunate cause of the disaster. Presuming on his knowledge of the harbor, he imprudently took charge of the ship; with a free wind, and all sail set, ran her on the *Thrum Cap* shoal.

In sailing from Halifax eastward, after rounding the *Thrum Cap*, E. by S. twenty-five miles, will clear the outer *Jedore* ledge: thence to *Cape Canso*, outside the ledges, the course is E. 10 N. ninety-seven miles.

The passages within the ledges may be taken with an active vessel, in bad weather; when the water is smooth, many of the dangers lie hid.

The shore between Halifax and *Jedore* forms a long shallow bay, with several indents, affording good shelter for coasters. The principal one, *Three Fathoms Harbor*, has received large vessels in distress, therefore merits attention. The smaller ones, *Cole Harbour*, *Chizetcook*, *Perpisawick*, and *Musquidoboit*, are

too inconsiderable to be here noticed; yet, as settlements, they are well advanced in agricultural improvement.

THREE FATHOMS HARBOR entrance lies eastward of Shut-in Island; and with the wind on shore is a difficult and dangerous navigation: therefore it is only in cases of real distress that a stranger would attempt it. The channel lies two-thirds over to the northward from the Island, and turns short round the starboard point, when within, or to the westward of it.

In beating to windward, ships may stand to within a mile and a half of the shore, and in the neighbourhood of Devil's Island, to half a mile. The soundings run off tolerably regular, from 8 to 12 and 20 fathoms, sand and mud, with spots of rock.

The lands are of a moderate height, and rise in easy inequalities, with settlements close to the shore. Red cliffs, forming abrupt heads, may be seen seven or nine miles; and being peculiar to the eastern shore serve to distinguish the position they are seen from. About S. by E. from Shut-in Island, two miles, lie some spots of foul ground, with 4 to 7 fathoms, that break in heavy gales. Between them and the shore, is 10 to 15 fathoms, clear bottom. Outside of them, you go off, gradually deepening to 35 fathoms.

The **Port of JEDORE**, alias **PORT EGMONT**, is blind and intricate: a shoal, with 11 feet on it, lies at its mouth. The channel is winding, and very narrow.

At high water, the mud flats being covered, it wears the appearance of a spacious harbour; but low water is the only time a stranger can navigate with safety. The channel is then shewn, and the water is sufficiently deep for ships of any burden, perfectly secure. The best anchorage is abreast of the sand beach, two miles from the entrance, in 9, 7, or 6 fathoms, stiff mud. About two miles and a half above the beach, the harbor branches; to the left, an arm navigable nearly to its head, with some sunken rocks in it; to the right, a large space of clear bottom, with depth from 3 to 5 fathoms. On the eastern shore, are two deep inlets, Oyster-Pond and Navy-Pool; both choaked by a bed of rocks at the entrance. Over these rocks, it is proposed carrying the bridges of the new road along shore.

At the North part of the eastern branch, Salmon River enters. A ledge lies in its mouth favorable for constructing the bridge of the new road. There is 14 feet on the eastern side of the ledge, and from thence up 5, 7, to 9 fathoms, with perhaps some rocks.

The river terminates in a strong rapid, from a lake surrounded by barrens, which will ever resist any attempt at improvement.

From the summit of a mass of rock, which appeared about 300 feet above the sea level, the eye met a panorama worthy the addition of reptiles, to make it the contrast to beauty. In this frightful desert, a human being, ragged, worn, and ghastly, presented himself, complaining, with evident truth, of fatigue and hunger: those who are permitted to feel the mixt sensations

arising from so providential an aid, may participate in what were the Author's.

At the eastern side of Jedore lie two islands, called Roger and Barren: between them, and likewise within them, the passage is good, and in case of necessity, anchorage may be found under their lee: from these, the land trenches towards the E.N.E. forming a deep indent, called Clamb Bay.

A number of small islands and ledges lie about this Bay, which are not worthy particular description.

Jedore ledges lie five, seven, and nine miles from the harbor's entrance. A brig from Glasgow, under full sail, in the year 1794, struck on a small single rock, and instantly sunk. Three persons were drowned, the rest of the crew with difficulty escaped. Thence it derived its name of Brig Rock.

An unusually fine day in May, 1815, offered a favorable moment to examine and determine its position. The second master, boatswain, and one seaman, in the jolly boat, left the vessel to sound close to the breaker; while Examiner sounded at a moderate distance around. The water being perfectly smooth, and breaking but very seldom, they incautiously went over it. The sea instantly formed a precipice, which drew the boat to its base, and burst with all its violence. The lead lines were fastened to the thaws, and the leads falling into the interstices of the rock, kept the boat in the breaker. Notwithstanding every exertion, one man sunk: totally possessed by fear, he let

the lines and oars, that were thrown him, pass through his hands without an effort.

Brig Rock has on it 3 feet water, about the size of a frigate's long boat: lies S.E. $\frac{1}{2}$ E. from Jedore Head, and S.W. two miles and a half from Long Island; deep water all round it, 17, 20, to 24 fathoms. The weed on its top frequently floats to the surface. The marks are, a house and barn in Clamb Bay, just open of Long Island, East end, N. 5 E. and the house on Jedore Head open to the N. E. of Jedore Rock.

Polluck Shoal lies South, nine miles from Jedore Head, is about an acre in area, and has 24 feet water on it: in heavy gales it breaks violently.

The courses are all by compass and given exactly, without any allowances.

Long Island is E. 12 S. from Jedore Head, three miles; to the South of it, lie several very dangerous ledges. The plan shews the depth round and between them. The ends of the Island are bold.

East from opposite Devil's Island, say two hundred yards, will graze Jedore Rock, and hit the body of Long Island: therefore E. by S. $\frac{1}{2}$ S. will be the course to clear the ledges.

From opposite the South end of Long Island, which may be rounded very close, or very distant, on account of the ledges, the

course along shore is E½S. but passing inside the ledges, the courses are various, from E. by S. to E. by N.

No class of vessels have been so wretchedly conducted and commanded as English transports. Interest and security appears to have regulated their owners, who always insured them. The object of the Transport Board was to hire sound capacious ships on the cheapest terms. During the late wars, agents of transports had their business on their hands, and naval commanders in charge of convoys, frequently found it necessary to place careful people from their own ships, even to the end of the voyage, to conduct the vessels of that class. The owners employed masters that would accept the lowest wages, generally Northumbrians, not remarkable for docility or skill, and the mates and crew of the same character. Such materials for navigation were provided, as these men judged suitable. From this cause may be traced a croud of evils and calamities; and this digression was produced by the singularly providential escape of a detachment of the Nova Scotia regiment.

The people of Arachat, alarmed at their unprotected state, on the breaking out of the revolutionary war, for the most part, fled to Jedore, as a place of greater shelter, and remained there till the peace of 1777. when they left their improvements and returned to Arachat. Two royalist families, in 1783, settled it from South Carolina: its population is at present, 23 men, 18 women, 34 boys, 24 girls: total 95.

The lands at the head of the harbor are stony, but tolerably good. The inhabitants, a sober, industrious, and thriving

people, subsist chiefly by coasting, and supplying the town of Halifax with wood, which they cut from the unoccupied lands in the neighbourhood.

LITTLE HARBOR, a place of safety for small vessels, but the passages leading to it require a knowledge of the ledges, many of which are sunken, but between them is water sufficient for the largest ships.

OWL'S HEAD, alias KEPPLE HARBOR, two leagues East of Jeddore, and twelve of Halifax, possesses capacity to shelter a fleet. The passage in, is sufficiently wide to turn into it vessels of any description: and at the anchorages, you lie land locked in 6 or 7 fathoms, mud. In choosing a berth in this Harbor, it is usual to be guided by the direction of the wind, taking the Western anchorage in S.W. gales: the Eastern anchorage in S.E. gales.

Three families are settled here, who keep a few cattle, but subsist chiefly by fishing.

The Head, whence the Harbor takes its name, is round, abrupt, and very remarkable. The land and islands in the neighbourhood are ragged and very barren.

SHIP HARBOR, alias KNOWLES HARBOR, is connected with Owl's Head, by a shallow passage within the islands, navigable for the smallest class of coasting vessels. The proper entrance is deep and bold: a white cliff marked in the annexed plan may be seen at a good distance from the offing, resembling a ship under

sail; but on approaching it, appears like a topsail schooner. There is anchorage in any part of the harbor, good bottom; above the narrows, a fleet of the largest ships may lay alongside each other, without the smallest motion.

Charles River at the Head of the harbor, proceeds from a chain of lakes, at a small distance. The largest, Charlotte Lake, connects with two others, that are joined to each other by rapids, which afford exceedingly favourable positions for mills.

Charlotte Lake averages one-third of a mile wide, and twelve long, nearly north and south, with an elbow bending eastward, about the middle, opposite Jedore carrying place: the distance from Oyster-pond, does not exceed a mile and a half. The lands on both sides, are clothed with wood of a superior growth, Birch, Beech, Maple, Pine, Spruce, Hemlock, and Ash. The Pine measure in circumference, 12 feet, 6 inches; the Spruce of the same size, and the Hemlock, still larger. This lake commences from two rapids, one running north; the other shapes its course from the north-east, falling with considerable strength, and appears to connect a chain of lakes, bounded by barrens, that have been laid waste by fire. Oak of a good growth, is seen on the bank of this river, and its confluence appears to have been the resort of Indians. The track of a Moose was fresh on the beach, with evident marks of Bears being in the neighbourhood.

The western side of the entrance into this harbor, is formed by a low rugged island, called Brier's, E. S. E. four miles from Owl's Head. From this island, ledges, partly dry, extend three-fourths of a mile eastward. When past them, you may

range along the large island on your West side, and find excellent anchorage under its North point, 6 or 7 fathoms mud ; or proceed to Charles River, guarding against the rocks off Black Point.

SHIP HARBOR, proper, commences about seven miles N. W. of Brier's Island, at a beach on the western shore, which has 6 fathoms close to its side. The entrance is one-third of a mile broad, widening as you ascend. Above the island called Green's, are some shoals and ledges, but the anchorages below them, are so capacious and good, there can be no necessity to describe them.

There are twenty families in the harbor, and on the islands in its neighbourhood, who keep small stocks of cattle. Spars, fire-wood, water, and stock, may be had here.

SHOAL BAY, in contradiction to its name, possesses a good depth of water, with strong mud, and an excellent anchorage, which is open from either Shoal Bay, or Ship Harbor. To the northward of Charles Island, vessels lie land-locked in 7 fathoms.

A rock that always breaks, lies off the mouth of the harbor. You may pass it close on either side. The water is deep on both shores, and the anchorage shews itself as you ascend ; parts of the harbor are sufficiently bold, to admit of vessels of the largest size, lying afloat, alongside the shore ; the bottom is black mud. There are seven families, consisting of 41 persons ; from them, supplies of stock, &c. may be had.

TANGIER, like the preceding harbors, is formed by craggy, barren islands, which effectually secure it against all winds: about two miles from the harbor's mouth, is a ledge that dries at low water. Anchor under the eastern shore; the bottom is stiff mud, and the depth 4, 4½, and 5 fathoms. There are four families, very comfortably settled here, possessing good tracts of pasture land; they follow the fishing and coasting.

POPE'S, alias **DEANE HARBOR**, has a ledge opposite its mouth, forming an obtuse angle with the two points, at three-fourths of a mile from each, with a shoal tail, extending half a mile to the southward: you can pass on either side this ledge, avoiding the shoal, off the outer Tangier Island. The best shelter is under a small island on the eastern side in 6, 7, or 8 fathoms, clay bottom.

A small narrow channel communicates eastward with **TAYLOR'S**, alias **SPRY HARBOR**. The two large islands, which the channel separates from the main, are called Gerard's Islands, after those who settled them. These afford shelter, but several dangers lie in the way, and no stranger would take the harbor, except in cases of necessity.

Taylor's Head, which lies on the eastern side of the harbor, being bare of trees, and composed of large white rocks, is distinguishable a long distance. A low shingly beach extends from the point of the head, westward, and is shoal, one-third of a mile off. On the opposite side of the bay's mouth, lies a ledge, and a large dry rock; pass them on either hand, and steer for the East point of Gerard's Islands; sail close to this point: a sunken rock lies off it, 300 yards: thence to the anchorage is safe.

S.S.E. 3 miles from Taylor's Head, is a dry rock called by De Barre the Hug; the fishermen name it Taylor's Goose. About midway, between this and Beaver Islands, lie the Shag ledges, partly dry, scattered nearly a league East and West. Within and about them is from 7 to 20 fathoms depth.

The North side of the same channel is called Dutch Town, from its being settled by Dutch families, whose farms are in excellent order, and bespeak great perseverance and industry. Taylor or Spry Harbor is open to the S.E. and S.S.E. winds.

MUSHABOON, an open port, with a S.E. wind, affords shelter at its head only, in 5, 6, or 7 fathoms mud. It communicates with Sheet Harbor, by a deep and bold passage, between the main land and an island; not a shoal or obstruction in it. You may lash your vessel to the trees, and in 30 feet water, your side touching the cliff, ride secure, perfectly sheltered from all winds: the general depth is from 5 to 8 fathoms, soft bottom.

There is not an inhabitant in Mushaboon; the lands are so barren, as to be incapable of cultivation. In going through the passage to Sheet Harbor, guard against a sunk rock in its mouth, which, from the smoothness of the water, seldom shews its position. It lies 400 yards off Banbury Island, and may be cleared by keeping the Sheet Rock open of that Island.

The fishermen living in the neighbourhood are generally ready to attend, on a signal being made.

SHEET HARBOR derives its name from a blank cliff, on a rocky

island at the entrance, wearing the appearance of a sheet. Its capacity is very great, and the deep navigable waters continue to the falls, about nine miles from the Sheet Rock.

The Islands fronting the harbor form several passages, through which coasters constantly pass and re-pass; and afford anchorage for vessels of any size.

The ledges outside shew themselves, excepting the outer one, called by the fishermen "Yankee Jack," from the circumstance of an American fisherman being drowned in its surf. In smooth water it is very dangerous: the position is shewn by the chart. Mr. Gosby, of Halifax, asserts that he struck on a rocky shoal, half a mile South of Yankee Jack. I searched for it without success, yet it may exist.

The sunken rock within the entrance of the harbor, two feet under water, is in the way coming in. To clear this danger, the Sheet Rock must be kept open of the island next within it, which lies on the Eastern side.

Sailing or turning up the harbor, give the sides a very moderate birth; the depth 5 to 11 fathoms, good holding ground. The lands at the lower part of the harbor are stony and barren, but improve towards the head of the navigation, where are two or three farms in tolerable order.

In 1783, some loyalist families settled this harbor: its present population is, 21 men, 22 women, 51 boys, 62 girls, total 156.

The extensive tracts of land in this harbor granted to individuals have much retarded its settlement. The parsimonious steps taken by the heirs, or agents of the grantees, teaze and harrass the feeble attempts of the poor. They drudge on, loath to quit possessions held for many years, yet daily annoyed by the harsh measures of their weightier neighbours. On their first settlement, they erected a church. The frame having decayed, they blended their labors, and prepared a new one. On raising it, they were told the attempt would end in the destruction of the building. "If they presumed to erect it, it would be burnt." The possessor of 10,000 acres could not spare two-thirds of one, for so laudable a purpose. In September, 1815, I saw the frame in a state of decay, lying on the point forming the fork of the harbor, and at the head is a saw-mill frame, under the same circumstances.

Attempts have been made to dispossess these poor people of the sterile and barren spots they have reduced to order, by the labor of many years; and I am pained to add, they have partly succeeded. Neither the court, nor their attorney, was in possession of all the facts relating to the case. To remedy, or even represent the very many existing evils attending a newly settled country, would be useless and unavailing. The above instance of oppression was forced upon my notice.

From Sheet Harbor to the eastward is a narrow, winding, but safe channel, formed by Salisbury Island; in the whole of which, the anchorage is secure, from 12 to 28 feet, soft mud. You can go to Beaver Harbor within the islands, but there are several sunken ledges in the way.

PORT PARKER, or BEAVER HARBOR, is zig-zag passages, between islands and ledges, which may afford occasional shelter : the westernmost is Pumpkin Island, the North side of which is quite bold ; and the inside, as well as the Beaver large Island, forms an excellent smooth shelter in a southerly gale.

The island to the Northward of these has in it a deep and bold inlet, where a vessel might lie concealed, and as secure as in a dock.

To sail into the harbor from sea, border on the Beaver Islands, giving the eastern one a quarter of a mile birth ; thence steer up N.N.W. along the side of Sutherland's Isle, leaving to the East of you the Black Rock, which is 10 or 15 feet above the sea, and deep water all round it. Proceed up, and on passing to the West side of the harbor, the houses on the settlement are seen, and you may choose your anchorage, either under Minx Island, or at the harbor's head.

The bason on the West side, has in it 18 to 20 feet water. You can lie afloat alongside the beach : off the point of the bason, a spit extends North, 300 yards. Four Dutch families from Malagash purchased the western side, 5000 acres, in 1798, from the late Captain Lawson. The property is in good order, and they appear to be doing well : they follow farming, fishing, and coasting.

The eastern side is a part of 10,000 acres, granted to Colonel Hale, in 1769 or 70. A small rapid river empties itself into the harbor, and at the confluence, four idle families live in most

miserable hovels. They attend to cutting wood, for which they get ready cash, and the land remains unimproved. An old soldier of the Prince's regiment has been settled here 15 years, and has cleared about two acres.

WHITE ISLANDS, half way between Beaver and Liscomb Harbors, appear of a light stone colour, capt with ever-green. They are about sixty feet above the sea level, bold on the South side: the passage between them is safe, and you may securely anchor inside, good holding ground, 7 to 10 fathoms.

From these, the rocks and ledges extend 5 or 6 miles, from East to E.N.E.—they are bold, and mostly dry: the water within them is always smooth.

BAY OF ISLANDS extends from Beaver to Liscomb, a distance of fifteen miles. The islands, rocks, and ledges, which are innumerable, are mostly seen marking the passages that lie in all directions, with great depth of water within them.

The eastern entrance of this labyrinth, near Liscomb, is **MARIE ET JOSEPH**, a most excellent harbor. The settlers keep large stocks of cattle, and two coasters. The land is good, and not difficult to clear: here are three families, consisting of 15 persons.

NICOMQUIRQUE, a small settlement, in the same range: a few salt marshes furnish abundant supplies of winter hay: they are a sober, industrious people.

NEWTONQUADDY, next East of Beaver, has seven families, upon

the side of a shoal river, on land originally granted to Colonel Hale: the grant embraces a part of Beaver Harbor, before-mentioned. The lands are good, and there is considerable marsh about the neighbourhood. The settlement consists of 10 men, 8 women, 14 boys, 20 girls, total 42.

They have no title to their lands: the possessions being undefined, their disputes are endless.

LISCOMB is justly considered one of the best harbors of this Province: commodious, smooth, deep water, and good holding ground.

South, $2\frac{1}{2}$ miles from Smith Point, lies the Black Prince, so called from the ship lost on it. It constantly breaks, and a part of it is uncovered. Smith Point runs off shoal nearly a mile S.S.E. The island side is bold, except a single rock W.S.W. from the South end.

The harbor's entrance lies about North; and having turned Green Point, its direction is E.N.E. Opposite the first fish stage, half a mile from the shore, is as good a birth as can be desired, in 7 fathoms. Thence the harbor continues navigable 4 or 5 miles. There are two sunken rocks, on the North side, as you ascend. The lands are rocky, and of little value. Three families are here settled, who follow fishing.

A narrow passage, with about 9 feet in it, is formed by Liscomb, alias Bouden Island, leading through towards Jegogan.

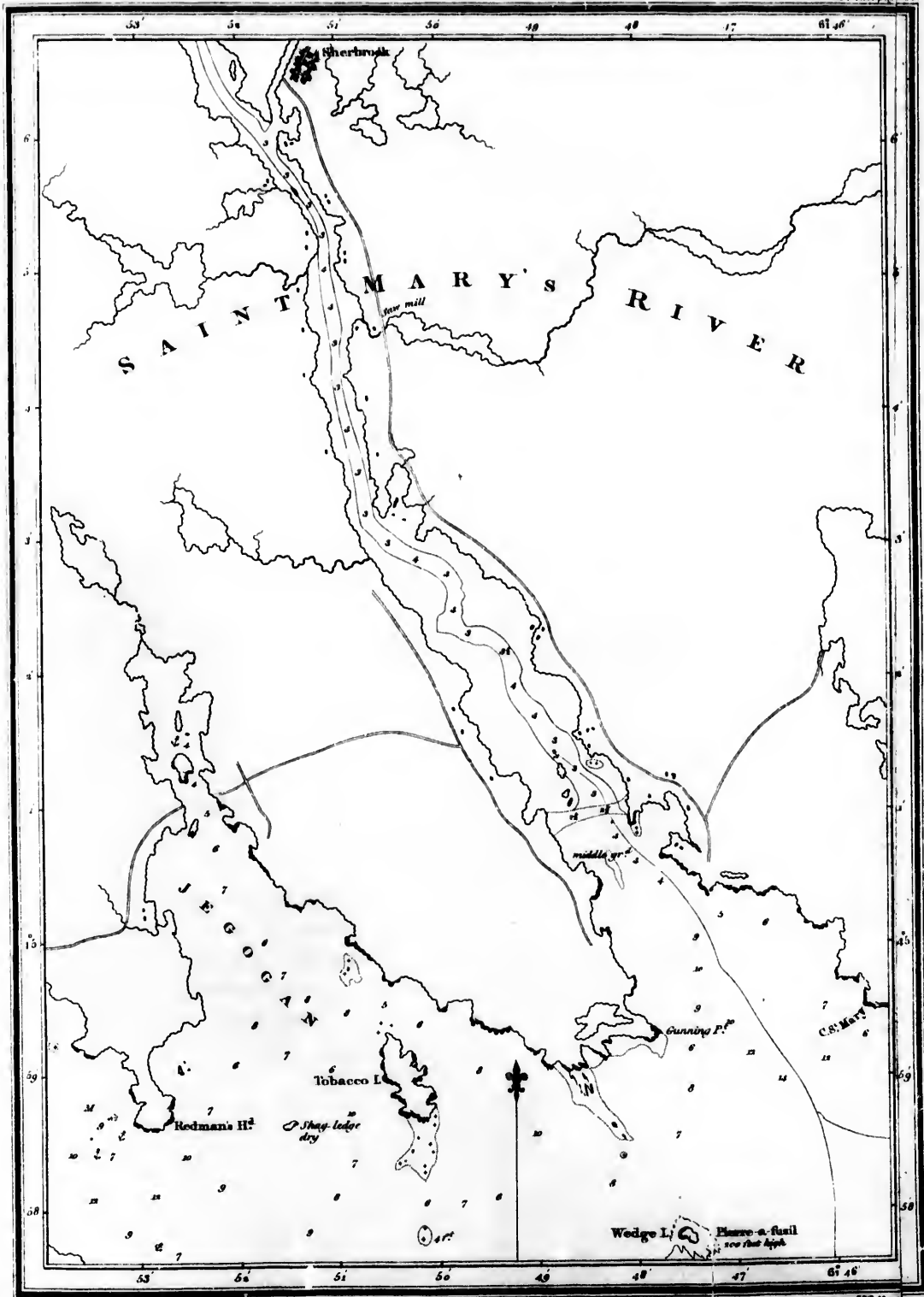
The S. E. end of Liscomb Island breakers lie off three quarters of a mile eastward ; within them, and under the lee of the island, is safe anchorage in 8 to 13 fathoms ; and if caught in a S. E. gale, the high and, called Redman's Head, is bold, and affords good shelter in 6 and 7 fathoms clay bottom ; the head bearing S. S. E.

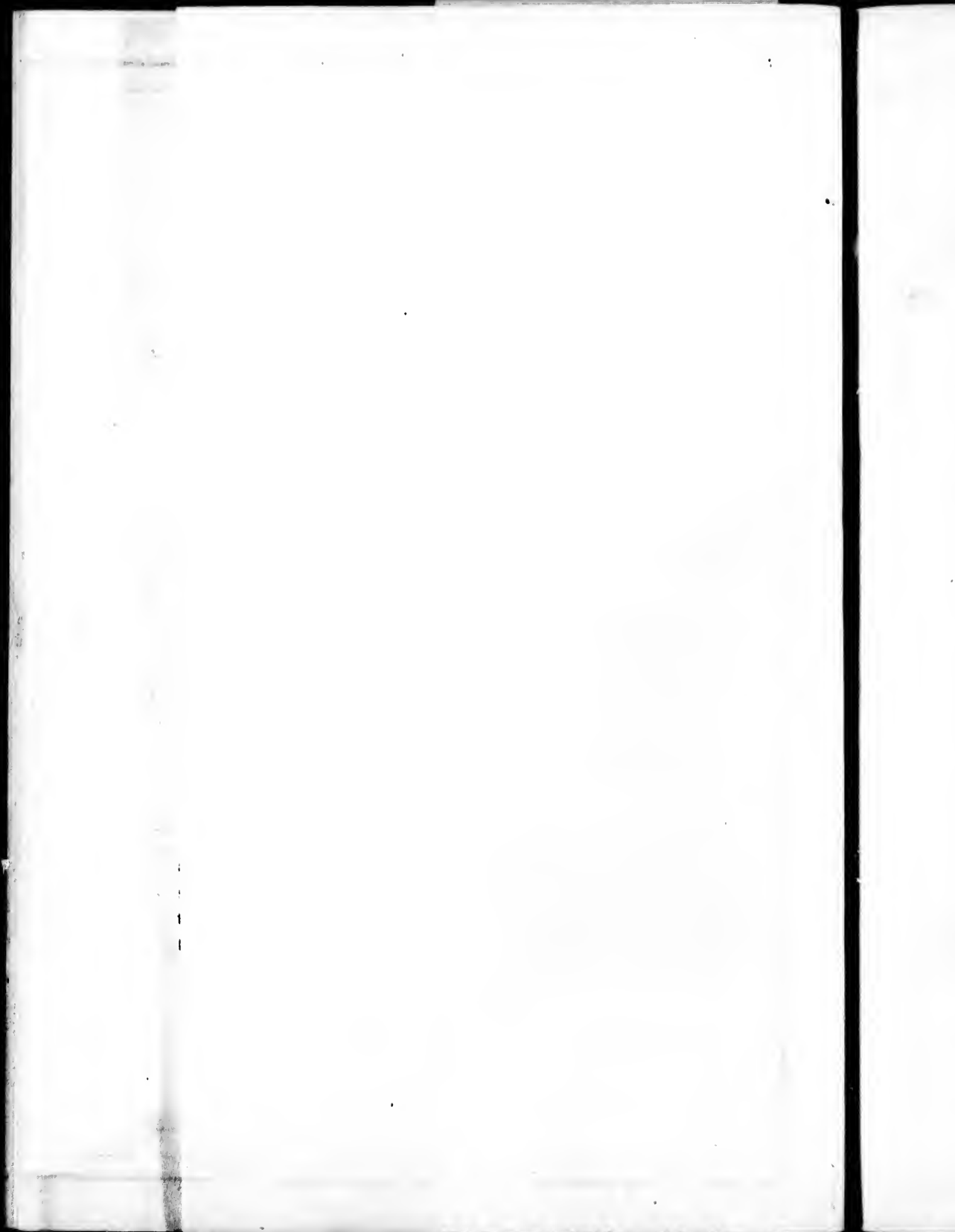
The passage into JEGOGAN, leads round Redman's Head, at a quarter of a mile distant from the shore. Shag Ledge, from thence, is on the eastern side of the passage, where, under a small island, you may anchor in 4 fathoms, muddy bottom. The land is broken and sterile ; one family resides on it.

Wedge Island, alias Pierre-à-fusil, is too remarkable to be mistaken, and is an excellent guide to the harbors in its neighbourhood ; lying from the entrance of St. Mary's River, South, 2 miles ; West, 10 miles from the entrance of Sandwich Bay ; and 4 miles, E. N. E. from Liscomb harbor's mouth. The abrupt side of this island is shoreward, and the top of the cliff above the sea 115 feet. Ledges lie off its S.W. end, half a mile ; and some sunken rocks obstruct the passage between it and the West point of St. Mary's.

South, $2\frac{1}{2}$ miles from the Wedge, lies a fishing bank, covering an area of 200 acres, with 20 to 30 feet on it.

The RIVER ST. MARY is rather difficult of access ; a bar of sand lying across the mouth, with 12 feet water on it, which in southerly gales breaks. In approaching the river, border on the eastern shore, to avoid the middle ground, which lies outside the bar, and is in very low tides, dry. The passage over the bar,





lies on the East side of a small rocky islet ; but as it is crooked, no mark can be given : the tide, which is very rapid, shews the passage. By keeping close to the islet, which is bold, you avoid a rock (covered the first quarter flood,) lying opposite to it, near the eastern shore. Thence the channel winds between mud-banks, extending from each shore which are dry at low water ; the general depth is from 18 to 24 feet. For about four miles, it runs to the N. N. W. thence two miles, N. by W. and thence N. N. W. two miles to the fork, where it separates: the western branch terminating in a brook ; the eastern continues navigable a quarter of a mile from the separation, to the rapids. The town of Sherbrook is at the head of the river, a distance of 12 miles from the sea. The easy communication by water, will tend to raise the town to consideration : there are two saw-mills, a grist-mill, and about twenty houses.

WINE HARBOR is barred by a sand nearly dry : within the bar is 4 to 5 fathoms. The lands about this inlet are poor. One family, consisting of five persons, has settled and cleared about ten acres.

INDIAN HARBOR, a shallow and unsafe creek, has good lands, well clothed with pine, maple, beech, birch, and spruce of considerable growth. There are six lakes in a chain, connected with the harbor, and extending nearly across the country to Antigonish. A family named Rude settled here in 1810, and live on the western side of the harbor : they consist of thirty persons, and have made considerable improvements.

East of Indian Harbor two miles and a half, within heads that

resemble islands, lies **HOLLIN'S HARBOR**, a place of shelter for coasters, and resorted to by fishermen. In it, are three or four settlers of the worst character, who appear to have chosen it as a retreat from justice. A river called **Little Indian**, empties itself at the head; its waters take their rise upwards of twenty miles to the N. N. W. draining through several lakes, and join the sea by a considerable brook.

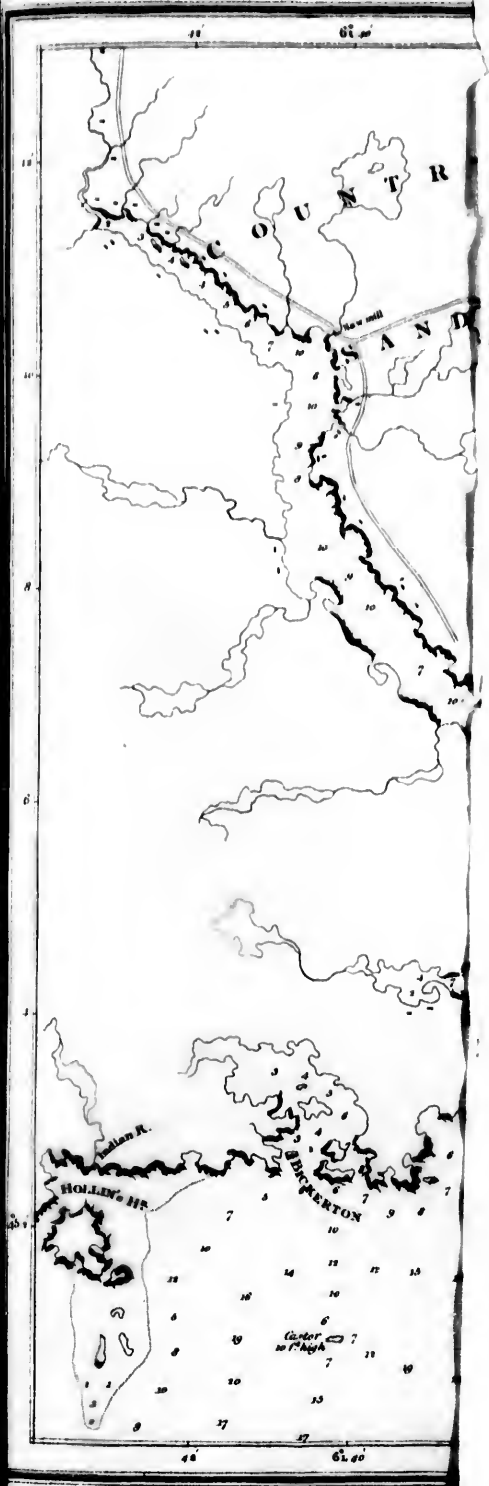
Three miles east of this, is the Port of **BICKERTON**, fit only for small vessels. In it are two families.

The extensive indent, styled by **Des Barre**, **SANDWICH BAY**, comprises several good anchorages, and one very superior harbor called **COUNTRY**, navigable for the largest ships upwards of twelve miles from the entrance of the bay. Both shores are bold, and the anchorage is soft mud, with from 5 to 13 fathoms depth.

The lands adjoining this harbor, were granted in 1783 to the disbanded **South Carolina Regiment**, who, possessing neither industry nor perseverance, as soon as their provisions were consumed, left the settlement, which still remains in a state of dereliction: two or three that continued, are now owners of very excellent properties.

Sixteen families are now seated on the sides of the harbor, and above the navigable waters: the farms are in a state highly creditable to the possessors. Fifty-three bushels of potatoes, besides grain, have been planted this season by **Mason**, an industrious settler, who lives four miles from the navigable water, with a large family.

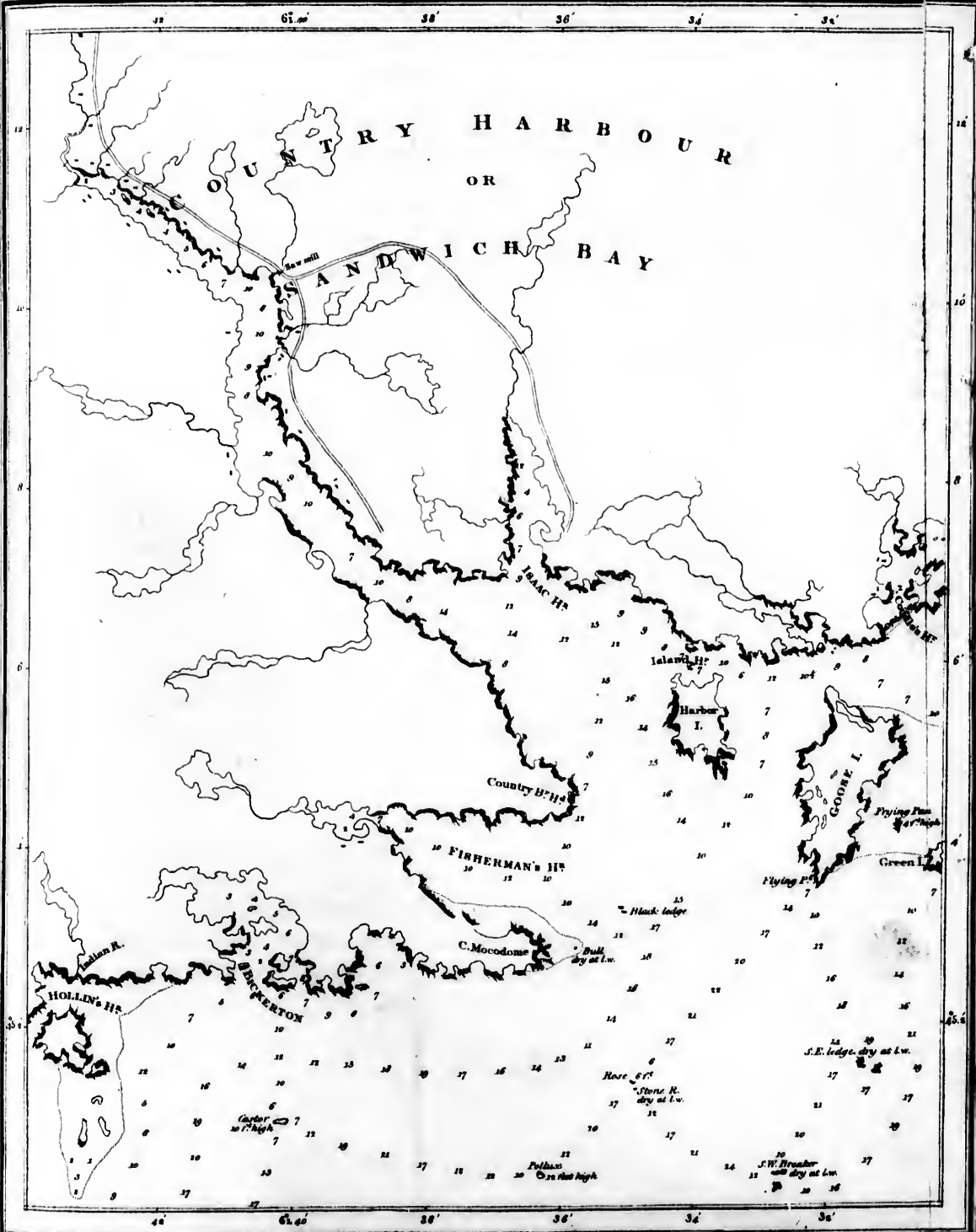




duable
ng the

ract of
e from
made

ssistant
vorable
others:
Country
y large
g. No
ers than
hermen
stages;
abound
he bait
on are
of this
ontinue
, where
during
e of the
e of the
in the
rment,
y.



38

resen
coast
settle
retre
at th
the l
a coi

Th
for si

Th
comp
calle
miles
the a

Th
disba
indu:
cons
of de
very

Si:
abov
credi
grain
settle
large

The river is shallow, descending through some valuable meadow: it rises in the middle of the Province, crossing the Manchester Road, four miles from the sea.

The new road to Antigonish South River, will open a tract of excellent land, now in a state of wilderness, almost free from water, and on it very little stone. This statement is made from actual examination.

In October, 1816, five axemen accompanied the Assistant Surveyor General through these lands, in search of a favorable position for laying off lands granted Captain Losack and others: after passing numerous lakes, which feed the waters of Country Harbor, they came to dry good soil, with timber of very large growth: the land in easy inequalities, favorable to settling. No position in the Province is more advantageous for settlers than this harbor: at its mouth the islands afford shelter to fishermen and small vessels, as well as the means of erecting their stages; and the fishing grounds at a short distance in the offing abound in halibut, haddock, and cod: and what they term the bait fishery, that is mackarel, gasperaux, smelt, &c. Salmon are plentiful in their season, and, but for the improvident use of this valuable addition to their means of subsistence, would continue for ages. In the River St. Mary, and many other places, where they are found in great plenty, nets are continually down during the season, and too frequently stretched from side to side of the rivers. Many of the mill dams choke the entire course of the brooks, and the Indians are allowed to destroy them in the narrow passes. These abuses exist unknown to the Government, or means might be used to preserve to posterity this luxury.

The ledges lying off Country Harbor generally break : between them are deep passages. There are two rocks to be avoided, coming from the eastward ; give Green Island a small birth, and thence up the harbor. From the westward, are two rocks, Castor and Pollux, which are above water ; and being bold to, may be approached : from them give Point Mocodome a good birth, to avoid the Bull, an ugly sunken danger, that breaks only in bad weather. The Black Rocks are partly dry, and from them upward there is no danger, and the anchorage is good.

East of Country Harbor is ISAACS, one of the anchorages here alluded to ; and westward is Fisherman's Harbor, a favourite resort of the American fishing vessels, from the advantage of the shingley beach, forming an elbow, convenient to dry their fish. On the eastern side of the Bay, leading to Country Harbor, are three low islands, covered with scrubby trees : the outer is called Green Island, the middle, Goose Island ; and Harbor-Isle is the inner, within which is an excellent anchorage. The two latter islands are called by Des Barres, William and Augustus.

Sailing eastward from these islands, and within them, you pass two dry ledges, leaving them to the southward ; the passage else is clear of danger, and from 10 to 14 fathoms deep.

CODDLE'S HARBOR is a shelter for small vessels : its entrance is on the East side : in bad weather clearly shewn by the breakers.

A deep inlet, called NEW HARBOR, presents itself about seven miles from the islands, connected with a chain of extensive

lakes; but a bar across the mouth completely obstructs its navigation. The lands are good, and the lakes abound in salmon, trout, gasperaux, and eels. But the harbor not affording shelter, those who at first attempted to settle it, abandoned their project. Even the small vessels that resort to it in the fishing season, are obliged to leave, the moment a southerly wind comes in.

The shore between Country Harbor and Torbay, except New Harbor, is rocky and sterile, with deep water close in, and regular soundings off, to 20, 25, and 30 fathoms.

TORBAY is easy of access from the westward; but E.S.E. of Berry Head, and South of George's Island, lie three very dangerous rocks, which, in smooth water, do not break.

Berry Head is bold, but the low point within, runs off shoal one-third of a mile; thence close under the western peninsula, you have 4, 5, and 6 fathoms mud, excellent smooth anchorage, up to the eastern part of the bay; or you can, when round Berry Head, and steering North a little easterly, anchor E.N.E. of Foster Island, in 3, 5, or 7 fathoms mud, and perfectly safe with any gale.

There are in this Bay twenty-one families, consisting of ninety-one persons, all comfortably settled, chiefly occupied in the fishery, and building vessels from 40 to 120 tons.

The lands are very rocky; a few salt marshes enable the settlers to maintain small stocks of cattle.

WHITEHAVEN, the eastern extremity of Torbay, is formed

by a parcel of craggy islands, the outer and larger of which, called White Head, from the colour of its sides, is seventy feet above the level of the sea: at the distance of 5 or 6 leagues, it appears round and smooth: the passage in, is on either side, running up mid-channel. The anchorage is all good, in 7 or 8 fathoms, a considerable way up. Off the head are two breakers, one S. W. the other E. by S. half a mile off. The lands around are hideously barren, appearing the resort only of crows, eagles, and monsters. Large bodies of water empty themselves into the harbor. The fishermen resort hither from Arachat, and the western extremity of the Province, during the spring and summer, for the purpose of catching mackarel, herring, and gasperaux: the American fishermen and privateers have hitherto used it, both in peace and war.

RASPBERRY HARBOR, alias PORT HOWE, though small, is a safe and commodious anchorage: the shores within the harbor are quite bold. On the eastern side of the entrance is an island; and South-eastward, close to it, a ledge. Round this ledge, and steer in for the harbor. The island which lies in the middle is bold: anchor under it in 7 fathoms.

Two single rocks are laid down on the eastern side of the entrance from Des Barres: I searched, but could not find them; and entered the port in a gale, without observing them break.

The country about the harbor, as far as the eye can reach, is a continued barren: here is a quarry of granite, much used for millstones. The shore from Torbay to Cape Canso is exceeding craggy and broken. No adequate idea can be formed of the horrors of this part of the coast, in a southerly gale.

The outlet between Raspberry Island and the main is a complete dock, where vessels can lash to both shores, and lie in 30 feet water; but half way through, it has only 10 feet.

DOVER BAY is a wild and deep indent, with a number of islands and sunken rocks at its head. Bordering on the western shore, shelter may be found, where the anchor is placed on that side in the chart; or in a South-east gale, by giving a birth to the rocks off the South end of Big Dover Island, (which in bad weather appear distinctly) hauling up under the Island, and anchoring between the small islands on the eastern side: within these islands, Little Dover Passage continues out South-eastward, 5, 6, and 7 fathoms deep, secure in any weather.

These places deserve notice, as they may afford shelter in cases of emergency: and in time of war, are nests for privateers. From the heights in their neighbourhood, which are bare, may be seen whatever is passing, to a great distance in the offing.

Eastward of Little Dover is St. Andrew's Channel, of which no directions can be given; the single rocks are so thickly planted, even those who are well acquainted frequently blunder upon them. This passage leads to Glasgow Harbor, which is, in fact, a part of Canso Harbor.

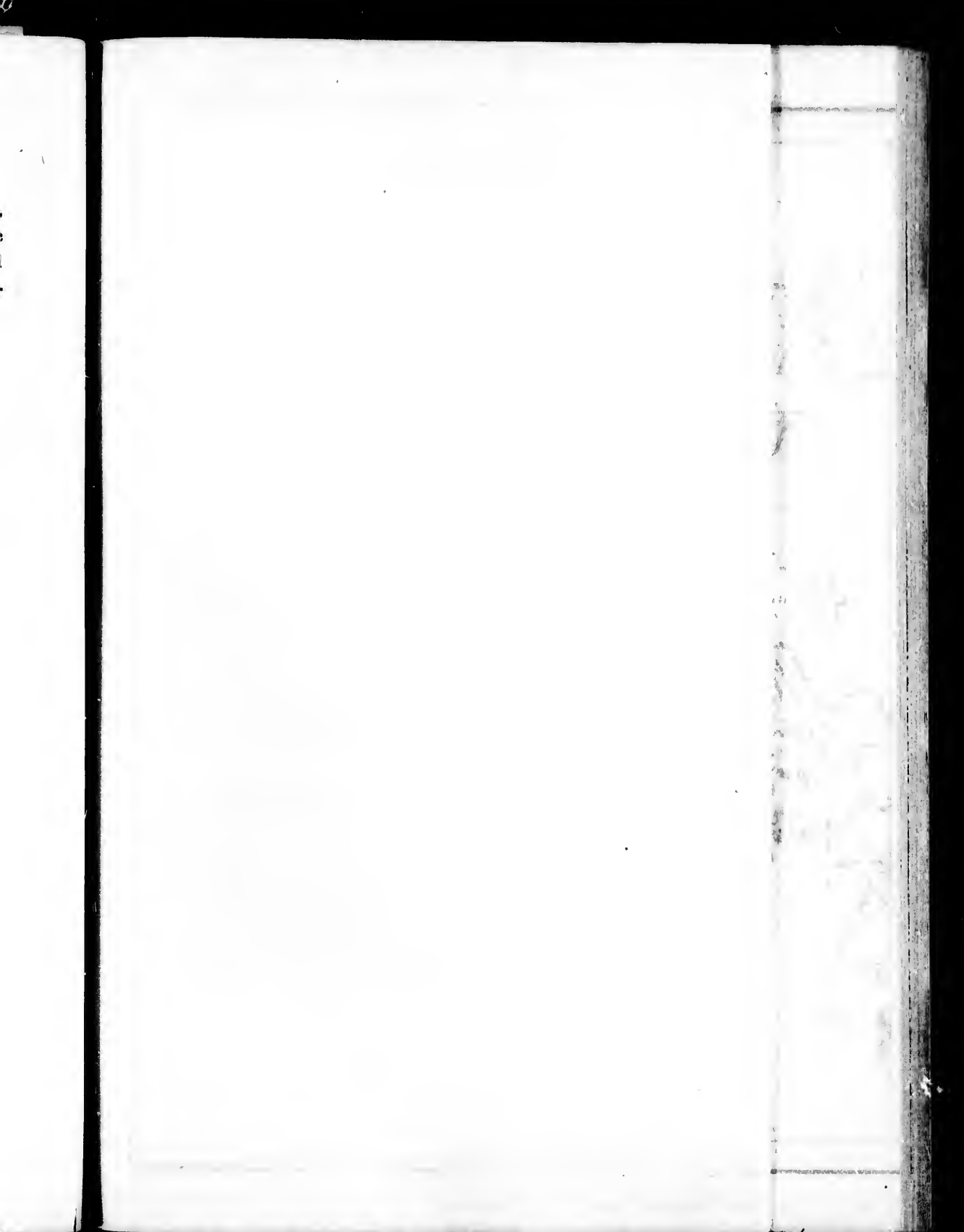
In the Tickle, formed by Durell's Island, there is generally, in the spring and fall, a number of small vessels assembled to catch mackarel and herring, of which large shoals pass, having escaped the nets on the S.E. coast, or have made the Cape from a more southerly direction, round Chedabucto Bay, pass through

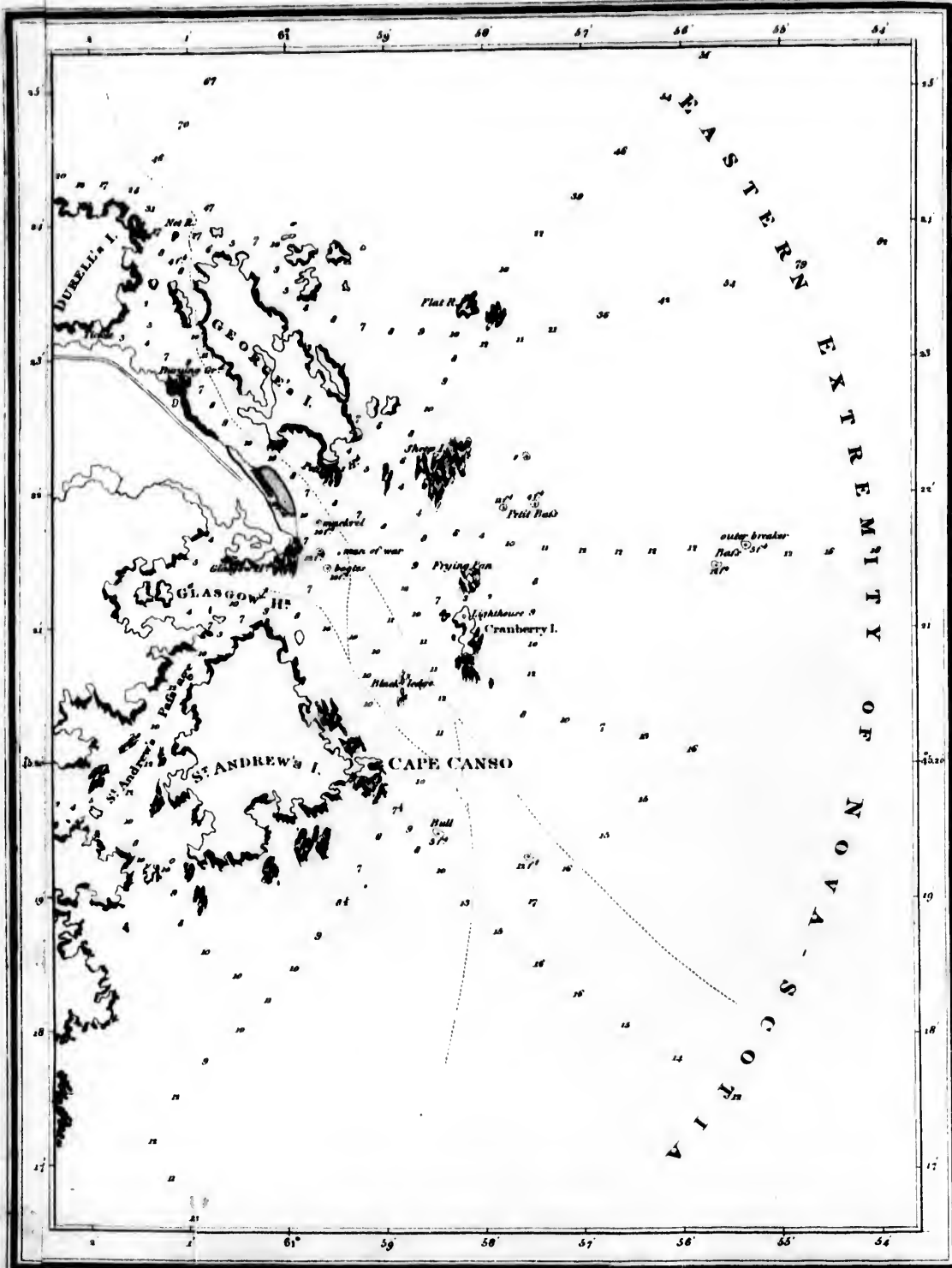
the Gut, thence northerly, their course of migration, I think, might be easily traced to the Polar regions, and dissolve the new and favorite theory of a few who have fancifully packed them in mud during winter; and it is told that a Mr. Pléville-le-Pelley, in Hudson's Bay, saw the bottom completely bristled with their tails and fins, through the mud!

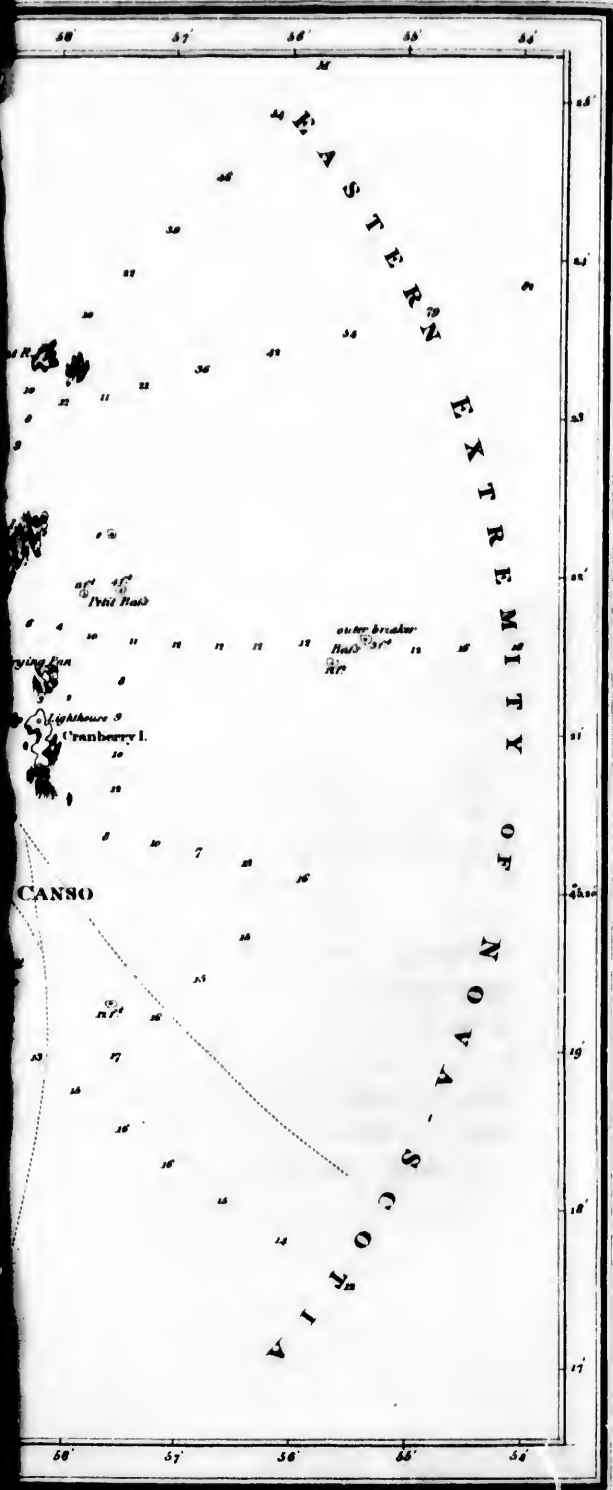
The extensive Bay of CHEDABUCTO is free of danger; the South shore is high, bold, and nearly straight. Fox Island and CROW HARBOR are on this side, and considered excellent fisheries: the latter is a safe anchorage for large vessels. Sailing in or out, pass to the S.W. of the island that lies in the entrance, and run eastward, towards the head, until sheltered: you anchor in 5 to 8 fathoms, stiff mud.

SALMON RIVER rises a considerable way in the interior, and descends through an extensive tract of excellent land. To the northward of this River lies Guysborough, alias Manchester. The river is considerable, and, when over the bar, a place of perfect security for any sized vessels. The entrance is narrow, and the tides run in and out with great velocity. The town is seated on the South side the River; and although very favorably situated, both for foreign trade, and a communication with the interior, it has made little progress. A battery of six 24-pounders commands the entrance.

From Manchester, round the North coast of Chedabucto Bay, through the Gut of Canso, even to the head of Bay Verte, the shore is thickly settled, and the land wears a pleasing aspect.







directed by A. Lockwood 1st May 1810.

J. Walker. Sculp.

The lands in the neighbourhood of Cape Canso are low and sterile, with several rocky islands to the N. E. covered as are the lands, with stunted fir trees.

In consequence of the many and frequent losses of property and lives in these parts, the Government has humanely directed a light-house to be erected on the southern-most of these islands. This light will not only prevent many serious calamities, but stand as an illumined beacon, at the conjunction of several high roads. The timber and infant coal-trade from the northern districts will receive material benefit from it. Vessels bound to this Province, and to the Bay of Fundy, will confidently run in its parallel of latitude. The Gut of Canso will, by its means, become the common gate-way to and from the Gulph and River St. Lawrence, and it will tend to mitigate the rigors of a late or early passage to Quebec.

S. E. seven-tenths of a mile from the Cape lies the Bull, a sunken rock that generally breaks; and one mile E. S. E. of it, a rock said to exist, discovered by a fisherman of Canso, in 1813, but I could not, in the most diligent search, find it.

CANSO HARBOR is well sheltered, with good ground, and sufficient depth for vessels of any burden. In a rough sea the dangers of the passages shew, but in smooth water it would be hazardous to enter them without a pilot. The Arachat fishermen frequent the neighbourhood: they are sober, steady men, well acquainted with the intricacies of its navigation: their vessels are schooners from fifteen to forty tons.

N

The course from the North passage of Canso Harbor to the Gut of Canso, is N.N.W. and to Arachat, North.

Tides flow till 8 o'clock on full and change, and usually rise eight feet; the flood setting to the northward, the ebb to the southward, at about one mile and a half to two miles per hour.

The GUT OF CANSO is formed by the lands of Cape Breton on the East, and those of Nova Scotia on the West. Its general width is a short mile, and twenty-one miles in length, with deep water from end to end. The lands are good, and the hills moderately high, rising in easy acclivities, with settlements on the whole range of the shore, for the most part in good order.

From Sandy Point, which forms the western side of the southern entrance, extends a sand-flat about a quarter of a mile from the shore: thence both shores are bold, with anchorage on either side.

Six miles from Sandy Point, on the West side, is Pilot Cove, affording good anchorage out of the strength of the tide, in 6 or 7 fathoms, muddy bottom. On the eastern shore are two sunken rocks, one opposite this harbor, the other a little southward of Balaches Point, both close to the shore, and may be considered a part of it.

SHIP HARBOR, a mile above Pilot Cove, on the opposite shore, is a convenient good retreat.

Two miles above Ship Harbor is Plaister Cove, on the same

side. The white plaister cliff shews in approaching from the southward, when opposite Pilot Harbor. This valuable quarry of gypsum appears exhaustless, and very easily wrought. Vast quantities might be exported, if conducted with spirit. At present it can only be shipped at high water. The anchorage at the mouth of the Cove is soft mud, in 4 to 10 fathoms. Opposite stands Cape Porcupine, a bold precipice of five hundred and sixty-two feet high. Here the Gut is only a quarter of a mile wide, and 35 fathoms deep, near the Cape.

To the northward of Cape Porcupine, the best anchorage is on the western shore, close in.

Just without the entrance lies AUBUSHEE a small harbor, settled by people from Arachat, who are very industrious and thriving. They build a number of vessels, from fifteen to fifty tons. From this harbor a rocky flat extends in a North-westerly direction, about a mile, nearly dry.

From Aubushee round the Bay called Antigonish to Cape George, the shore is flat, and free of rocks: under the Cape is good anchorage, in 7 or 10 fathoms, sheltered from westerly winds.

The branches of ANTIGONISH RIVER rising in the interior, through many miles of as fine land as any in the Province; settled first in 1783, by the Carolina Regiment, and at present populous, and rapidly improving in agriculture. Vessels that load here with plaister, are obliged to complete their cargoes outside the river's mouth, for want of depth.

From Cape George to Merigomish the shore is high, bold, and straight; without a single inlet or place to shelter the smallest description of coasters. In consequence, much inconvenience has been felt, and, I believe, some lives lost. To remedy this evil, the Provincial Government has granted a liberal sum for the erection of a pier, three miles westward of the Cape, and eighteen east of Pictou; at a slight indent called the Barn, from a high rock, resembling a building. The pier, in its present state, shelters small vessels; but its extension is in contemplation, which may be done, to receive vessels of large size. The whole extent is well settled; the large barns and extensive clearances indicate favorably, both of the inhabitants and soil.

PICTOU HARBOR, situate on the N. E. Coast of Nova Scotia, is rather a river than a harbor, with a bar across its mouth, on which, at low water, is fifteen feet; and outside the bar lies a shoal, called the middle ground, seven feet under water. The windmill near the town, in a line with the beach, forming the left or South side of the harbor's entrance, is the mark to clear the middle ground, as also for the deepest water. Over the bar, within the beach, the water deepens to 5, 6, and 7 fathoms, muddy bottom; and continues that depth to the town, opposite which the mud flat extends some distance; leaving the channel about midway between the shores. Just above the town the river divides into three branches, the East, West, and middle. Up the eastern branch, the channel, though winding, is navigable about four miles for vessels drawing fifteen feet; a bar there crosses the river, and the coal is shipped from large flat boats. Above the bar the water runs deep, as high as New-town Glasgow. The pits are nine miles from the town of Pictou, and

are likely to be worked extensively. The West and middle rivers are navigable a considerable distance, by a narrow winding channel between the mud-banks. The lands are good, and the population rapidly encreasing.

Two miles North of the mouth of Pictou River lies CARIBOO, a small harbor, difficult of access, but quite safe inside. Ships load here with timber, but as a pilot is absolutely necessary to enter, directions are superfluous.

Opposite Cariboo Point lies a rocky shoal, half-way across, with ten feet water on it; in circumference a quarter of a mile; round it are 4, 5, and 6 fathoms: the tide, both ebb and flood, runs rapidly over it. The ledges off Cariboo extend upwards of a mile from the shore: some of them dry. Several vessels have mistaken Cariboo for Pictou: the hollow land over the former appears a deep inlet, and Pictou high lands, folding over each other, blind the harbor.

Isle Pictou, the property of the Honorable Sir Alexander Cochrane, contains about two thousand acres of tolerably good soil. Three families have settled on the South side, and their improvements are considerable. Fine quarries of free stone have been opened, and strong traces of coal are visible in several places, about the cliffs. Off the East end lies a spit of rocks half a mile; and E. N. E. four and a half miles, a shoal with 21 feet water on it. Between this isle and Merigomish, the depth is 7 to 11 fathoms, an even muddy bottom.

E. S. E. eight miles from Pictou, lies MERIGOMISH; a bar of 14 feet crosses the mouth: within, the depth is from 4 to 7 fathoms, soft mud.

From Cariboo to Cape John the depth gradually lessens to the shore; say at two miles, 8 or 9 fathoms; round Cape John is TATMAGOCHE and RIVER JOHN, and a point separating these from RAMSHEG HARBOR. These Harbors are good, and well sheltered; but as a pilot is absolutely necessary to any vessels entering them, a full description is better avoided. Off Tatmagouche lies Amet, a low isle, from which a flat extends half a mile: thence twenty-five miles is PUGWASH, a blind little harbor, with a reef or ledge at its eastern point, and at its mouth a bar of 18 feet. The pilot is in constant attendance, and no ill can accrue from passing the harbor: the mistake would exist only a league or two, as the opposite point, Tormentine, would shew itself.

From Pugwash to Point Tormentine is fifteen miles, which may be considered the width of Bay Verte, and its depth from this line to the confluence of the salt and fresh water at its head, is also five leagues. The shores on each side sensibly wash away, leaving cliffs at the Promontories, with flats off each, formed by the earth lost from the shore: the water gradually deepens, and the anchorage is good. Vessels of considerable burthen take in cargoes of timber up the creeks: a channel winding between the flats has 17 to 20 feet water.

The features of the North-eastern coast are soft and pleasing; the land low and even, or slightly broken by inequalities that

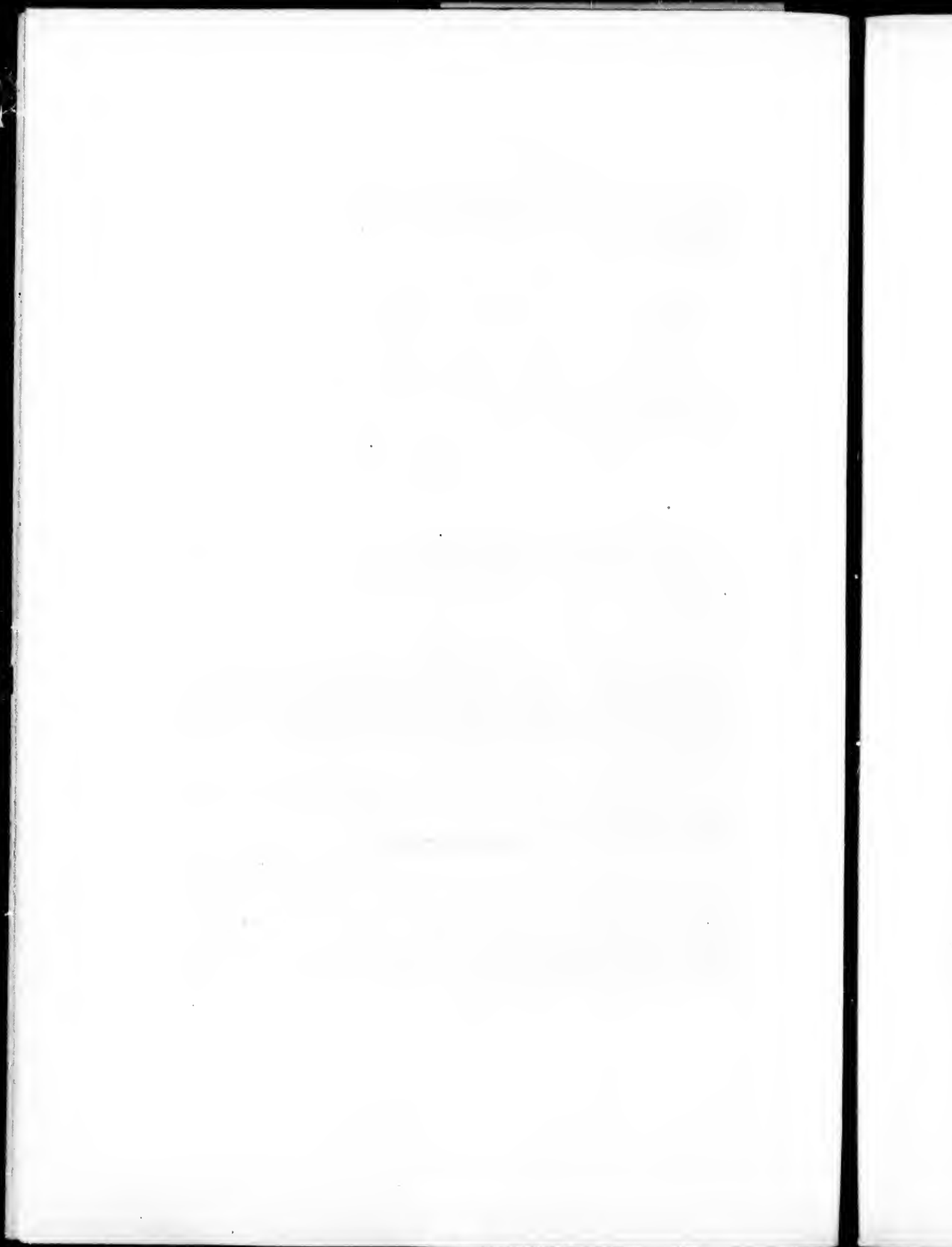
relieve the eye. Settlements are formed and forming along the shore; and the interior, from Bay Verte to Amherst, Cumberland, Tantamaree, &c. is in a highly improved state.

A rocky shoal off Point Tormentine, in shape resembling a fan, covers a large extent. The outer part, 20 feet, lies three miles from the point: vessels of small draught pass within it.

The Straits of Northumberland, formed by Nova Scotia and New Brunswick on the South, and Prince Edward's Island on the North, is about one hundred miles in length, with a pretty general depth of water from end to end, say 10 to 16 fathoms: the bottom is a red stiff clay, good holding ground.

The dangers in it are the shoal off Pictou Isle, Tormentine ledge, and the shoal to the westward of Prince Edward's: the anchorage on either side is good holding ground.

My examination of the coast ceased here. At a future period it may be considered worthy attention. Miramichéé, Gaspee, as well as the neighbouring parts, are fast lifting into consequence.



T I D E S.

On the whole S. E. and S. W. coast, when uninfluenced, flow till eight o'clock: to the eastward rather earlier: the general rise is from 6 to 9 feet.

At Cape Sable the flood-tide sets up the Bay of Fundy, commencing that direction a little eastward of the Brazil Rock; thence to Cape Canso, the general set of the flood is eastward, in a direction with the shore, and the ebb westward.

In the Harbor of Halifax the tide runs at an easy rate, seldom rising higher than 8 feet.

The tides between Halifax and Cape Canso are not regular: they flow till near nine o'clock; rising from 6 to 8 feet, the flood setting eastward, the ebb westward. Near Cape Canso, the flood courses northerly through the channels which lie scattered about the eastern extremity of this Province; thence up the Bay

of Chedabucto: but its bodily strength towards the Gut of Canso, rushing through it with great rapidity. At Cape Porcupine particularly, the narrowest part of the Gut, it seldom runs at a lesser rate than four or five knots: generally flowing a quarter past nine at full and change; the ebb in a contrary direction.

Along the shore, past Aubushee, Antigonish Bay, rounding Cape George, and continuing through the Straits of Northumberland, the flood sets in a North-westerly direction, and flows till between seven and eight o'clock on full and change: the perpendicular rise, from 4 to 7 feet.

At Pictou the tide rises on the bar only 3 feet, and within the harbor 6 feet; the cause of this irregularity I had not time to discover.

These are the tides' natural courses, and although the times of ebbing and flowing do not materially change, they are almost continually varied by the winds.

A southerly gale accelerates the ebb of the St. Lawrence, which with the waters of the gulf are pressed through the Straits of Belle-isle, consequently draining the stream northerly between Cape Ray and Cape North; as also the stream of the Gut of Canso, which for many successive days runs one way.

A North-westerly gale turns the stream southerly between Cape Ray and Cape North, and presses the water through the gut; thence arises the uncertainty of the gut stream, which continues its course southerly till the level of the water is restored. Lateral

winds have only a partial effect; for example, a strong easterly wind arrests the ebb in its course through St. Paul's Straits, and increases the stream in either the Belle-isle Straits, or the Gut of Canso.

This irregularity causes the many wrecks that happen every season in the neighbourhood of Cape North: some of them attended by circumstances truly distressing. No tabular account can ever be given of the currents of the Gulf St. Lawrence, and the Gut of Canso. I have strongly urged the erecting a light-house on St. Paul's Island, being convinced it would prevent a recurrence of these dismal calamities.

When it is considered that the rivers of the Mediterranean are considerable, and most probably supplied from it, and also the vast exhalations that take place from a sheet of water surrounded by high lands, concentrating and attracting the whole force of the sun's rays, the rush of water eastward through the exceeding narrow pass, the straits or Gut of Gibraltar, is no longer surprising: nor is it necessary to resort to the imaginary under-stream, to expend the influx.

The secretion of the waters exhaled continues a considerable time, and when discharged, they are diffused over the face of the earth. I mean the marginal soil of the Mediterranean.

Speaking of the motion of the waters, this extraneous remark is given to remove the doubts which (without reason) are entertained of the moon's influence. These doubts generate in the irregularities observed in some places, that may be traced to peculiar causes.

LATITUDES AND LONGITUDES.

TIDES.

	North.	West.	Var. W	● &)	Rise.
Halifax, Naval Yard.....	44 40	17 65 32	5 17 28	8	7 to 9 feet.
Light-house	44 28	30 63 30	30	8 15	5 7
Green Island, Mahone Bay	44 25	26 63 58	40 16 12	7 58	6 8
Aspatagoen High Lands	44 33	63 59			
Cape Le Hove	44 12	49 64 16		7 55	5 7
Liverpool Light-house	44 4	64 34 50		7 50	5 8
Little Hope Island.....	43 48	57 64 46	43 15		
Shelburne Light.....	43 40	30 65 8	14	7 50	6 9
Cape Negro	43 33	50 65 15	40		
Brazil Rock.....	43 25	30 65 22	14 30		
Cape Sable.....	43 27	40 65 33	14 27	7 45	6 12
South Seal Island	43 28	65 57 30			
Cape Fourchu.....	43 52	66 9		8 15	12 14
Brier's Island Light	44 19	66 20 40	15	9 10	14 18
Grand Manan, South end	44 35	30 66 55	30		
North	44 52	50 66 46			
Manan, S. E. ledges.....	44 37	40 66 40			
Gannet Rock	44 35	30 66 51	10		
Shut-in Island.....	44 37	24 63 15	30		
Jedore Head	44 40	63 7 50	16 20	8 20	6 9
Southernmost Jedore ledges.....	44 38	62 59 30			
Owl's Head	44 42	45 63 48	37 17 32	8 30	5 7
Cape Spry	44 46	30 62 31	30 17 10		
Liscomb Harbor entrance	44 56	61 54 40	17 17		
Wedge Island.....	44 57	55 61 47	30 17 40	8 37	6 9
Green Island, Country Harbor...	45 6	5 61 30	5 16 16	8 40	6 9
Berry He. i, Torbay	45 12	61 18			
White Head, Whitehaven.....	45 12	20 61 9	18 40		
Bull Rock, Cape Canso.....	45 19	50 60 58	30		
Canso Light, Cranberry Island..	45 21	60 58		8 50	5 8
Sandy Point, South entrance, Gut.	45 31	61 15	20		
North entrance of Canso Gut, or } Ship Harbor.....	45 42	61 29		9	6 9
Pictou Island, North end.....	45 51	62 28 30	19 40		
South end	45 48	30 62 34 10		9 30	4 7
Pictou Harbor	45 41	62 40		9	6 9
Sable Island, East point.....	44 5	60 3			
West point	44 2	60 30		8 30	8 10

The mean increase estimated from all the old variations given, make 6' annually.

Having commenced at the capital of the Province, and described the coast eastward, it is expedient to proceed with the harbors West of Halifax.

KETCH HARBOR, a small barred inlet, N. N. E. of the light, has 9 feet water at the entrance: inside are 3 and $3\frac{1}{2}$ fathoms. Twenty families, consisting of a hundred and twelve persons, are here settled, who get a comfortable subsistence, by supplying the market of Halifax with fish: they are a sober, industrious people.

SAMBRO HARBOR is a league North-westward of the light-house, easy of access, and perfectly sheltered, with sufficient depth for any vessels. The coasters of Nova Scotia resort hither in bad weather: frequently are collected from forty to fifty small vessels in this retreat.

In 1780 this harbor was settled; it now has thirty-one families, in all a hundred and fifty-five persons, who are fishermen. The lands are barren, incapable of improvement, except a few spots on which are raised a scanty supply of vegetables.

Ships, making the land, by mistake, to the westward of the light, or in foggy weather, being within the ledges, may, by the annexed chart, run into Sambro, or between the light-house and Chebucto Head. Those having charge of ships which frequent Halifax, should know this passage: several vessels have been lost, that by a knowledge of it would have been saved.

PENNANT HARBOR, round the low point next West of

Sambro, has good anchorage, but is seldom visited. The islands contiguous, are bold, and afford within them safe anchorage.

The other small harbors and indents I have not yet had time to examine: should the survey be continued, they will be added at a future period.

PROSPECT HARBOR lies within several small islands, and presents to the eye of a stranger the rudest features of nature. It is extensive and safe; and in bad weather (the only time vessels of consequence would enter it) the dangers shew themselves. The inhabitants, twelve families, have seated themselves on the left side of the harbor's entrance, on two small islands, forming a little cove, in which they have erected their stages, and cure about two thousand quintals of cod-fish, besides mackarel, herring, and gasperaux.

SHAG BAY and BLIND BAY, two deep inlets in the same indent, both possess excellent anchorage: they are situated twenty miles W. N. W. of the light-house.

On the western side of the entrance of Blind Bay are the islands forming the Port of DOVER, a very safe and good anchorage. The best passage is to the eastward of these, giving them a moderate birth, and anchor within the body of the largest island, called Taylor's or Inchkeith, in 7, 9, or 10 fathoms, muddy bottom.

The lands between Halifax Harbor and Dover are craggy, broken, and barren; the shore iron-bound and steep, scarcely a

tree to be seen, in the whole distance of twenty miles. Yet in the memory of several persons living this naked tract was clothed, except the outermost projections, with a growth of fir, spruce, hemlock, birch, and beech. The fire getting into the woods at the dry season of the year, and impelled by the wind, spread over the greater part of Halifax township, consuming an immense body of valuable wood, to the great injury of the inhabitants. The wooden fences on the peninsula were destroyed, and Halifax depended, for hay and other supplies of ground provisions, on Massachussets. It was this necessity, stimulated by a bounty on stone fences and English hay, raised on the peninsula, that introduced regular inclosures, and ultimately reduced to order, the lands about the town.

The line of coast above-mentioned abounds in fish, and the little ports and harbors are most conveniently situated for the fishery. Great quantities of cod, herring, and mackarel, are annually sent to market, chiefly cured.

MARGARET'S BAY is about twenty-five miles in circumference, in length nine, and two miles wide at the entrance. In this beautiful sheet of water are harbors capable of receiving ships of the line, even against the sides of the shores.

On the West side of the entrance, about South from S.W. Island, distant one mile and a half, lies a ledge, part of which is above the water, shelving on all sides, and in bad weather the sea breaks on it very heavily. Opposite South-west Island to the E. N. E. lies a rock with 24 feet on it. This rock cannot be

deemed a danger, the sea breaking on it in bad weather; the only season the heaviest class of ships could possibly strike it.

South-west Island is a body of rock, say 50 feet high, and bold-to on all sides: the passage is good between the Island and Owl's Head: the latter is an abrupt precipice.

NORTH-WEST HARBOR is a tolerable anchorage for small craft: the fishermen inhabiting this nook are well circumstanced, and consist of eight families. They occasionally trade to the United States.

From the North-west Harbor the western shore of the bay continues bold and rugged. A small rock very close to the shore, above Birch Head, with 6 feet water on it, is the only detached danger.

Long Cove is a good anchorage, with the wind westward: a saw-mill is driven by an excellent stream, supplied by two lakes, handy to the shore: but owing to the fire ranging the woods, a scarcity of timber is felt.

Three miles northward of Long Cove, and nine miles N. N. W. from S. W. Island, is HUBBERT'S COVE; by keeping the western shore on board may be entered by a stranger, and a ship dismasted or in distress may find a perfect shelter in this recess, and if without anchors, may run on the ground in safety. A cooper, carpenter, and fisherman, are here very comfortably seated, and the ground, capable of tillage, is in excellent condition, and very productive: a saw-mill was last autumn erected on a

favorable seat at the neck of the upper lake, and from thence the timber is drawn by oxen to the sea.

Hubbert's Ledge is a ridge of rocks, about a hundred fathoms in length, and covered at high water, so that in smooth water and the top of the tide, this danger is hidden ; but both shores contiguous to the cove being bold, the ledge is avoided by bordering on either side. From thence eastward to the North-east corner of Margaret's Bay are several indents, with rugged points projecting ; from these places, the small vessels take building-sand and lime-stone, which is here in abundance, and the latter of a superior quality. Cooper's and Indian Rivers are both shallow and rocky nooks, although great resorts for salmon. The trout in the lakes above, are in vast quantities ; in length from seven to thirteen inches, delicate to the taste, and the fish of a deeper red than salmon.

Moser Islands are sheep-folds lying in the way to Head Harbor, an anchorage of the first order, and so perfect a place of safety that a fleet might be securely moored side-by-side, unaffected even by a hurricane. The lands are high and broken. Mason's Point is in itself a good farm, well worked, and stocked by strong cattle. There are in this neighbourhood ten families, whose habitations are snug, warm, and crowded with healthy children.

French Cove may be considered an extensive dock, easy of access, and the depth 5, 7, 8, 10 fathoms, mud bottom. Germans inhabit this settlement, whose farms, houses, barns, and vessels, shew their persevering industry in a favorable view.

A shoal with 10 feet water on it, lies opposite the mouth of French Cove, at a distance of two miles; but as the islands on the eastern shore are bold, a vessel seeking shelter can have no business wide of either side.

Jolliman's Island is a valuable sheep-fold, and under the lee, the anchorage is safe for ships of any size.

Luke's Island is the property of an Acadian, who keeps on it about eighty sheep: this is also a compleat break to the sea, and the anchorage North-eastward of it is smooth in all seasons.

Hagget's Cove and Indian Harbor are fit only for fishing vessels.

Shut-in Island is two hundred and eight feet high, covered with wood, and bold to. A ledge 9 feet under water lies between Patty's Point and the South end of the Island. In a southerly gale the water is smooth in the island's lee, and the depth from 10 to 14 fathoms, good bottom.

A sunken rock lies off the second point South-eastward of Patty's Point, distant about three hundred yards; but this danger lies outside the bay.

The course from Dover or Inchkeith Island, to the eastern point of the bay, is W. N. W. three miles, along a rugged steep shore, against which the sea breaks violently. The high lands of Haspotagoen are very conspicuous, on the isthmus separating Margaret and Mahone Bays: they may be seen seven or eight

leagues. Immediately below is the small harbor and settlement of Haspotagoen. South, two miles from the western point of Charlotte Bay, a ledge shews itself; and W. N. W. of it, near Mahone Bay, another, called Sea-ledge. They are always uncovered or breaking, and therefore never dangerous with a good look-out.

MAHONE BAY, next West of Margaret's, is equally extensive, though differently formed. At its entrance are some dangerous ledges, and several small islands, forming commodious harbors, as well as convenient places for fisheries.

At the head of the bay, the town of Chester was settled in 1760, by thirty families from New England, consisting of a hundred and forty-four persons; they brought with them their stock and cattle, and went industriously to work in clearing the ground, and enclosing their clearances. The small islands at the head, enable them to keep a number of sheep, and present as fine scenery as the imagination can paint.

In 1784, a few loyalist families came hither with some property, but unacquainted with farming, they expended their money on buildings and unprofitable pursuits. Discouraged and disappointed, most of them abandoned the settlement, and returned to the United States.

There are two grist, and two saw-mills: good seats for many others are formed of the two principal rivers that fall into this bay. Several schooners and square-rigged vessels have been

built at this port, which abounds in every wooden material for ship building.

Approaching the bay from the eastward, the first land is Green Island, round, small, bold, and moderately high. Thence to Ironbound and Flat Islands, is about two miles and three quarters, both bold: passing between, proceed to the Tancooks, which are settled; the passes between them are bold, and the anchorage good under the lee, in 7 to 12 fathoms.

Sailing the bay towards Chester, the only danger is a ledge, partly dry, about two miles northward of Great Tancook. The islands off the town, make the harbor quite smooth and secure; the depth from 2 to 5 fathoms. Westward of Great Tancook, are two shoals, one with 6 feet on it, a mile and a half W. S. W. of the little islet on the N. W. side of Tancook; the other one-third of a mile off the western point of the island.

The Bull rock uncovered at one-third ebb, lies a mile and a half South of Tancook, and three-fourths of a mile West of Flat Island; deep water all round it.

Chester Church, open of Great Tancook, carries you clean to the westward of this rock, down to the two Duck Islands, which are small, low, and tolerably bold; between them 10 to 14 fathoms. From these Islands to the head of Mahone Bay, along the western shore, are several places of perfect security for vessels of the line.

Lunenburg was first settled in 1753, by Dutch and Germans,

transported to this country, the two preceding years, at the expence of government. They consisted of two hundred families, amounting to fifteen hundred persons, and were supplied with farming tools, and materials for building. One thousand pounds was expended in stock and cattle; the government maintained them for three years, and till 1762, considerable supplies of flour and grain were annually sent them. At this period, two vessels only were owned by the settlement; but encouraged and supported, they discovered an active spirit of industry, which has met with deserved success: most of them are comfortably settled, and many of them opulent. Vessels of different descriptions are now constantly plying between this settlement and Halifax, carrying to market, chord-wood, lumber, hay, cattle, stock, and all kinds of vegetables. The population may be computed at four thousand two hundred souls.

The harbor is easy of access, with anchorage to its head. Keep mid-channel between the island at the mouth, and the eastern point. When within the island, border on either side, to avoid a sunken rock lying in the middle, three feet under water. The best passage to turn in is the western. Alongside the wharves are 12 and 13 feet water; close off them, 20 to 24 feet soft mud.

Cross Island, containing two hundred and fifty-three acres, in height about 30 feet, lies at the entrance of Lunenburg, the property of Mr. Smith, by purchase: he resides on the N. E. side, in a small nook where coasters lie secure. The Hounds, a ledge of rocks, lie off the N. E. part, across the channel. The West and South sides of the island are bold, and South two miles from the South end, is an excellent fishing bank, from 14 to 17 fathoms.

In ascending the bay, opposite the Ovens, which are hollow cliffs on the western side, lies a rock with 12 feet on it, called the Sculpin, about half way across. This place is much exposed to South-easterly gales.

LE HEVE granted in 1760 to two hundred and sixty proprietors from Connecticut, few of whom attempted to settle; those who did, remained about a month, and then quitted their situations. The lands have since been re-granted to sundry persons, Germans and others, who have increased in population and improvement. They have erected fifteen saw, and two grist mills; several square rigged vessels have been laden here for the British market, with birch, beech, and pine timber, spars, hand-spikes, capstern-bars, and plank, both oak and pine.

The land about the harbor, is high and very stony, covered with spruce, birch, beech, pine, and hemlock of a large growth. Above the navigable waters, the lands are very good, and some farms in neat and excellent order.

From Lunenburg to the island called Iron-bound, at the eastern entrance of Le Heve, the shore is bold, and the distance about twelve miles; on this island a family resides; from thence to the bar of the river is about four miles, N. W. and the depth 12, 10, 8, 6, and 4 fathoms, and under the islands at the western side good sheltered anchorage. On the bar is twelve feet, and the deepest water one third across from the eastern shore. When over the bar, the water deepens to 4 and 6 fathoms, continuing navigable to the falls which are twelve miles higher. The general width of the river is half a mile: the road from Lunenburg to Liverpool strikes the bank about eight miles up, and a ferry boat

attends for the convenience of travellers. On the western point, above the bar, may be seen the remains of a French fort, built in 1737.

Cape Le Heve, is an abrupt cliff, 107 feet above the sea, W. by S. eighteen leagues from the entrance of Halifax. One mile S. E. by S. from the Cape, lies the Black Rock, ten feet high, and one hundred feet long, with deep water round it, and 10 to 14 fathoms deep from the shore. From the Cape westward to Cape Metway, the land is broken and craggy, forming a deep bight; behind Cape Le Heve is what Des Barres calls Palmerston Bay, at the head of which is Petit Riviere, a settlement formed by the French. The waters of the river take their rise a considerable distance in the country. The farms of this settlement are in excellent order.

PORT METWAY, between Cape Le Heve and Liverpool, is considerable, both in its navigable capacity and its consequence as a fishery. The five mills turned by the river annually cut six hundred thousand feet of timber, and find a ready sale for it. This place was settled about the same time as the neighbouring harbors, and under similar circumstances. In July, 1817, there were fifty families, or two hundred and seventy-six persons.

The entrance is marked by the hill of the western head, and the low ragged islands on the eastern side: the width seven-eighths of a mile, from 5 to 14 fathoms deep, and the bottom even.

S. W. ledge lies from the Frying Pan Island S $\frac{1}{2}$ E. three

quarters of a mile: it breaks in rough weather: the least water on it is 19 feet.

The Stone Horse, a rock dry at low water, is E. by S. one-third of a mile from S. W. breaker.

Opposite Neil's Point the anchorage is good: the mud-banks from thence narrow the channel, where a pilot is necessary. The tide runs with strength, and flows forty-five minutes past seven at full and change.

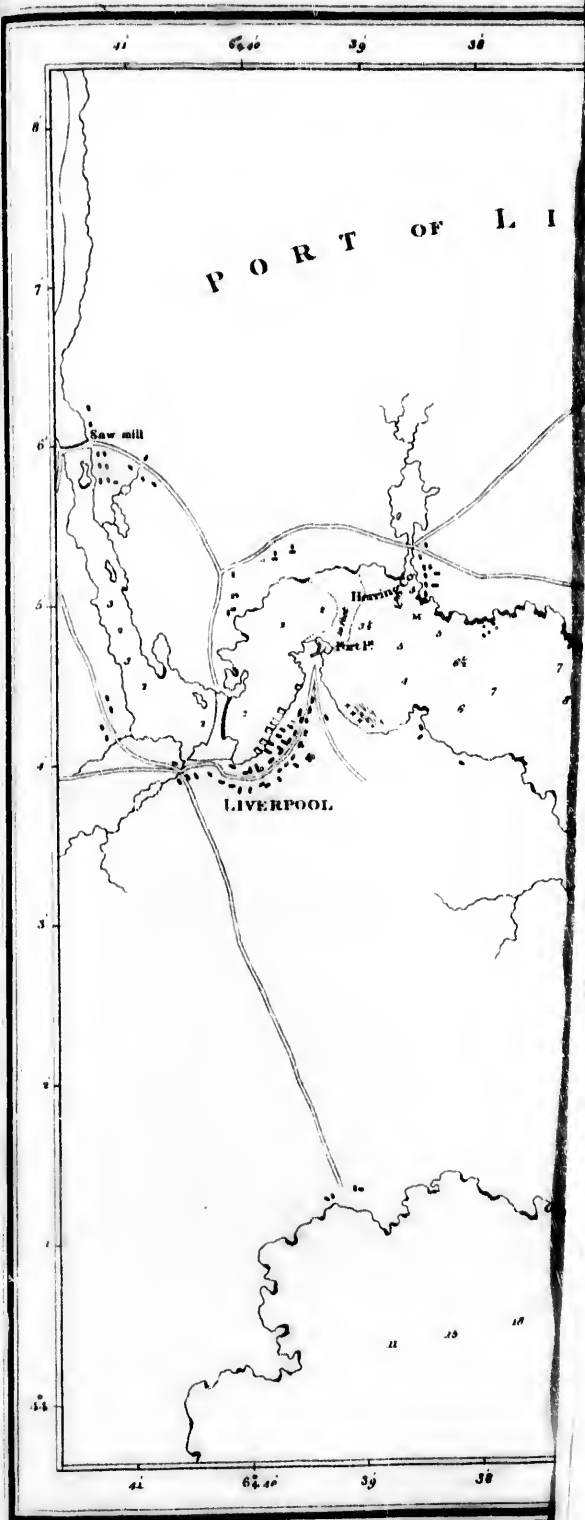
LIVERPOOL entrance lies W. by S. twenty-five leagues from Sambro Light-house, and W. S. W. $\frac{1}{2}$ W. fourteen miles from Cape Le Heve. An island called Coffins, and the western shore, form a deep bay, affording good anchorage for large ships, with the wind off shore: the depth from 5 to 14 fathoms, clear bottom. On the South end of the island a light house is erected, and was for the first time lighted in June, 1816. The light revolves every two minutes, and may be seen at a good distance.

Liverpool Light-house was begun 30th May, 1811, completed 31st December, 1815.

Diameter at the base	28 feet.
Height	50
Lantern's Diameter	17
Height	12
Total Height	75

The town was settled in 1760: in 1762 the settlement con-



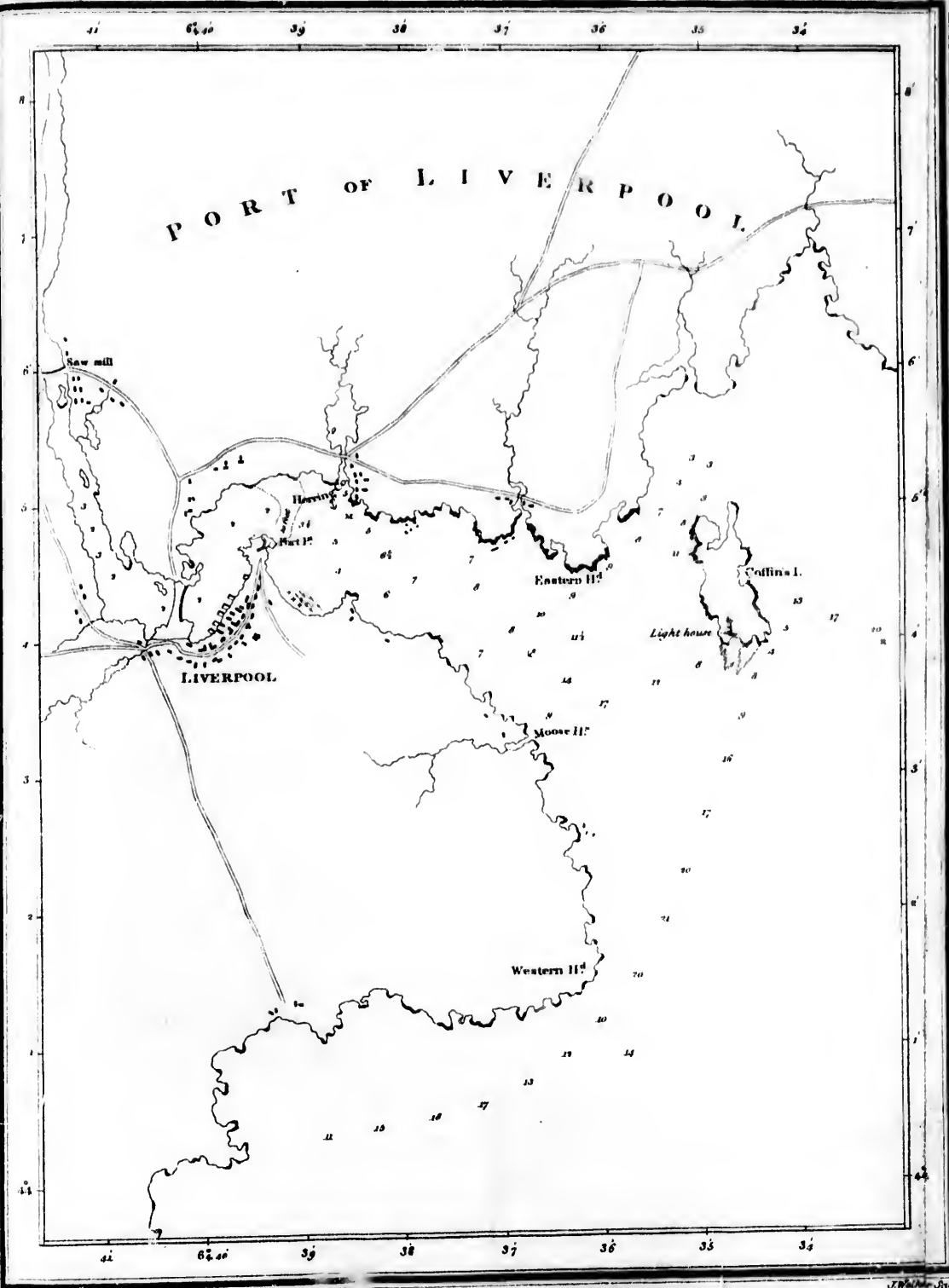


Published as the Act directs

10
 rt
 y.
 ss
 a
 y
 s,
 s,
 re
 d
 t,

 g,
 re
 no
 ly
 ly
 ve
 re

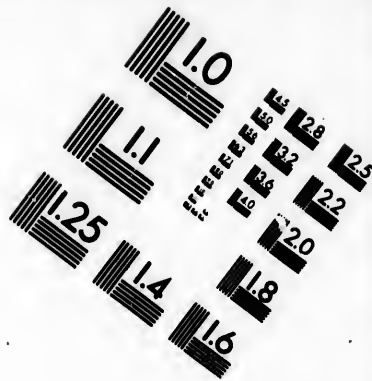
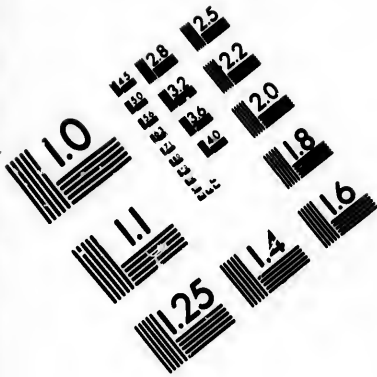
 e,
 g;
 so
 ip
 ld
 on
 be



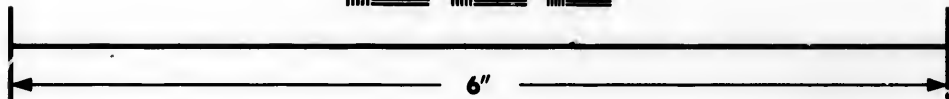
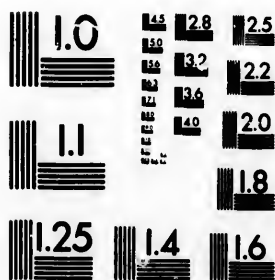
Published as the Act directs by A. Lockwood 1st May 1818.

J. Walker Sculp^t





**IMAGE EVALUATION
TEST TARGET (MT-3)**



**Photographic
Sciences
Corporation**

23 WEST MAIN STREET
WEBSTER, N.Y. 14580
(716) 872-4503

14
12.8
13.2
13.6
14.0
18
20
22
25

11
10
13.6
14.0

t
t
f
t
f
S
f
t
h
a
r
3

tained ninety families, who, it is said, removed hither from Port Seigneur, for the convenience of the river and port for the fishery. Yet it is not easy to conceive a place where nature has done less to favor man. A broken, rocky, barren country, surrounding a port obstructed at the mouth, and possessing a capacity very limited. The settlers originally came from the United States, of industrious, sober habits, and their exertions being unanimous, they not only surmounted these difficulties, but have raised the town to respectability and opulence. Their commerce is extended to every part of the West Indies, and their enterprising spirit, during the late war, was very conspicuous.

The population is now twelve hundred persons.

An Episcopal church, a Methodist and Anabaptist meeting, a Custom House, and school, form the public buildings. The latter was built at the expence of James Gorham, Esq. who presented it to the town in 1803. The houses are substantially good, and the regularity of painting them outside, not only improves their appearance, but tends to exclude the native humidity, and materially preserves the buildings, which are chiefly of wood.

S. W. fourteen miles and a half from Liverpool Light-house, lies Little Hope, an island 21 feet high, and 200 fathoms long; three miles from the shore. This is a serious danger, being so low that it cannot be seen at night, any distance: a valuable ship was lost on it in 1815. In my opinion, a sonorous obelisk would guard this danger, at a very trifling expence, by the application of tubes similar to organ-pipes. This idea improved, might be

so constructed as to be inflated by the slightest air: even a leathern reservoir, that would be filled in strong winds, which in light airs or calms should supply the pipes; and thus, without attendance, an exceeding loud sound, might be continued.

PORT MOUTON, or **Mattoon**, alias **GAMBIER HARBOR**, is nine miles from **Liverpool**; **W. S. W.** from the **Western Head**, is the course to the safe anchorages. In 1783, a small fleet wintered here, which is a sufficient proof of its safety. The port is formed by **Mouton Island**, lying across the bay. The **Black Rocks**, partly dry, lie eastward of the body of the island, nearly a mile, and the passage between, has from 15 to 17 fathoms. A spot of foul ground with 20 feet on it, lies **N. N. E.** of the island, half a mile. The small **Spectacle Islands**, **W. N. W.** of the North end of **Mouton Island**, are seen in approaching the entrance. To the northward and westward of them, in 12 to 20 fathoms, muddy bottom, vessels may lie secure from all winds.

The **Western passage** is shoal, used only by coasters; in entering it, a rock near the western shore is visible: pass this rock and the point, and haul up either to the anchorage off the **N. W.** shore of **Isle Mouton**, or round the **Spectacles**.

Westward of **Port Mouton**, immediately within **Little Hope**, is **PORT JOLIE**, alias **STORMONT RIVER**, an inlet upwards of five miles deep, has scarcely sufficient water for large boats. The lands are barren and very stoney: eleven families are settled on them, who make a comfortable livelihood chiefly by fishing. Between **Port Jolie** and the **Hope**, are ledges that shew themselves, and a shoal spot, half way between the island and the main land.

PORT L'EBERT is the third inlet West of Liverpool. The abrupt western head distinguishes the harbor, and it may also be known by Green Island, that lies a mile to the S. W. of the entrance.

The Port's mouth is the only anchorage for vessels larger than coasters. The depth half a mile above the head, is from 9 to 12 feet, sandy bottom. Fifteen Families inhabit this place originally from New York : they arrived in 1783.

SABLE RIVER, the fourth inlet West of Port Mouton, affords shelter to the smallest class of fishing vessels only, on account of a bar clogging the entrance. Eleven families, who settled here in 1783, still inhabit this sterile, inhospitable spot. A small nook close to the westward of the river, is called Little Harbor, where two families live.

RAGGED ISLANDS, W. by S. fifteen miles from Isle Hope, and E. N. E, nine miles from Shelburne Light, are craggy and broken, with a number of very dangerous sunken rocks and ledges. The harbor, which takes its name from them, being difficult of access, is seldom resorted to, but by the fishermen. Inside, the anchorage is good, in 41 and 4 fathoms. In gales of wind, the uneven rocky ground causes the sea to break from side to side, at the entrance. Off the western head, a short mile, lies a bed of rock, on which the sea always breaks. Between the head and these rocks, there are 6 to 8 fathoms.

In August, 1812, His Majesty's Brig Emulous steering W.N.W. in a thick fog, at one P. M. struck on the Ragged Island Ledges:

three quarters past one, bilged and filled. The Colibri was in company, and let go her anchor in 7 fathoms: at five o'clock got all the crew on board her. The Emulous, in addition to her crew, had one hundred and fifty-six prisoners. At six o'clock next morning, the fog cleared, and they discovered their situation.

In the deep indent between Ragged Islands and Shelburne, lie the anchorages of GREEN HARBOR and RIVER JORDAN: they are places of little note, but well settled. The inhabitants cut quantities of hay on the salt marshes, and follow the fishery.

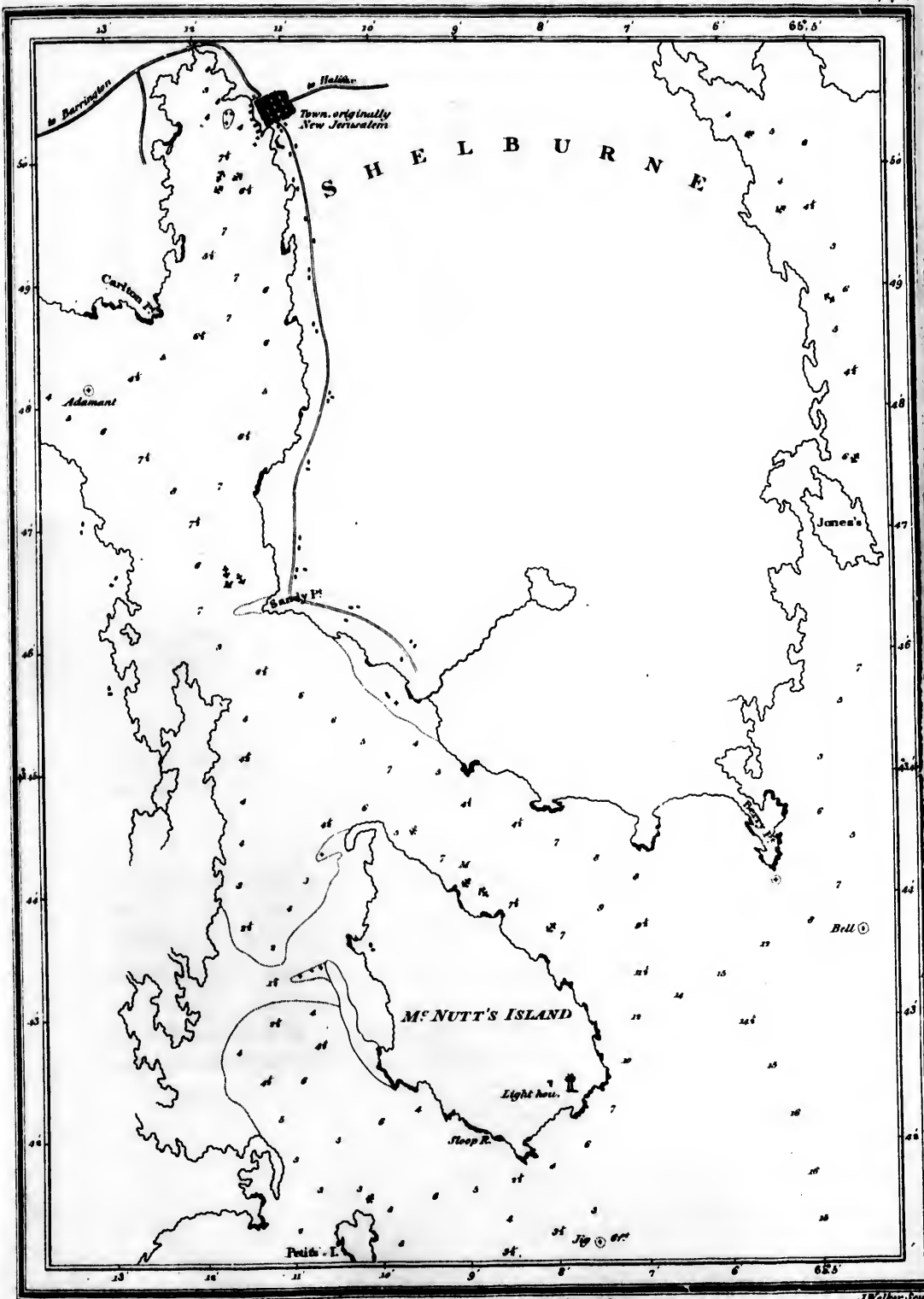
SHELBURNE HARBOR is justly esteemed the best of Nova Scotia, from the ease of its access, and the perfect security of its anchorage.

On the S. E. point of McNut's Island, at the entrance, stands the light-house. The lantern is 125 feet above the level of the sea; half way down is a small light to distinguish it.

The dangers in approaching the harbor are the Jig Rock, and the Bull, the former one mile and a quarter S. S. W. $\frac{1}{4}$ W. of the light, and the latter, E. N. E. two miles and a half from it.

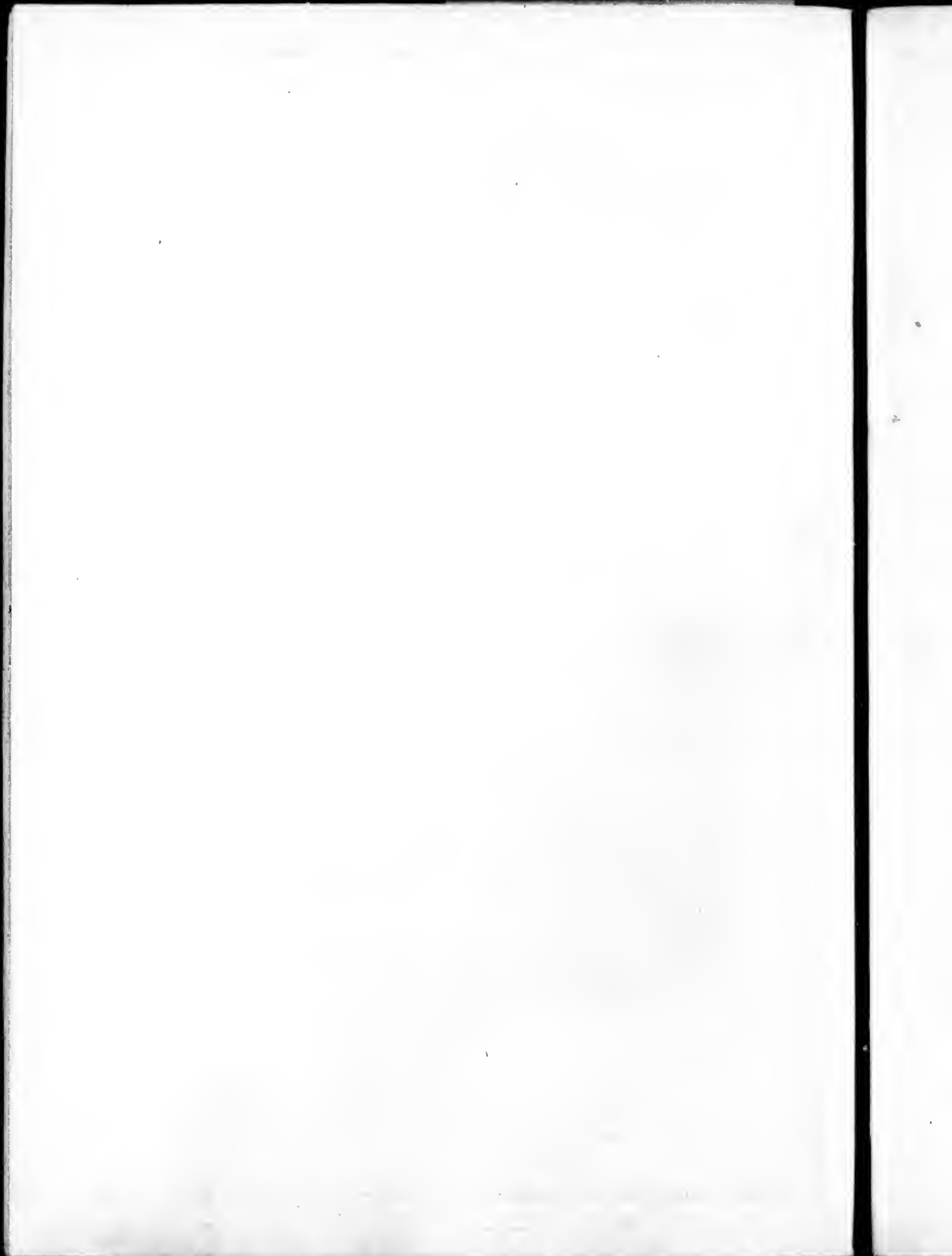
It is impossible to view the present state of Shelburne, without the strongest feelings of regret. Buildings that would have credited any city, falling to pieces untenanted. Some hundred houses, with their ornamental parts defaced, and their windows broken, mouldering to ruin: once the dwellings of a respectable, loyal, and wealthy people. The streets are overgrown with grass and weeds. A stranger unacquainted with the history of its decline, would imagine it the effect of dearth or pestilence.





Published as the Act directs by A. Lochwood 1st May 1842.

J. Walker Soul.



The Jig is 6 feet under water, rather in the way of vessels from the westward: therefore bring the light to the northward of the rock's bearings, and steer for the island, which is bold along its eastern shore. The course up is N. W. by N. when past the point, the anchorage is good, in 7, 8, or 10 fathoms. There is a shallow spot on the eastern shore, on which His Majesty's Ship Akbar struck in turning up.

Off Sandy Point, a sand spit stretches, 300 yards. McNut's Island locked with this point, the anchorage is exceeding good: shipping well provided with ground-tackling would here ride smooth and safe in the heaviest storm.

In the nook or bend below Carlton Point, lies a sunken rock, but not in the way.

Captain David Milne turned His Majesty's Ship Bulwark in and out of this harbor, during the American War. By his direction the watering place was improved, and a place of shelter formed for seamen, who may be employed watering.

Shelburne was first settled in 1764, by Alexander McNut, and associates, who named it New Jerusalem. They received grants of land from the government in the neighbourhood of this harbor, to the amount of a hundred thousand acres: but improved only a small part of the island at the harbor's entrance, and other inconsiderable spots. Most of the lands have since been re-granted.

“ At the close of the revolutionary war in 1783, many thousand

loyalist families emigrated to this quarter. Pleased with the spacious harbor, they commenced forming the town. These infatuated people expended their fortunes in extravagant buildings, without object or consideration. In 1784, its population exceeded twelve thousand inhabitants; and in October, 1816, there were only three hundred and seventy-four persons in the town and suburbs. Dissatisfied in their views, to attract hither the leading people of Nova Scotia, and make this the seat of Government and the emporium of the Province, most of them returned to the United States, or settled in other parts of the country.

“The misfortune of these people arose principally from their being unfit for either farming or fishing, as they had accumulated their property by commerce; and in the frenzy of enthusiasm, were led to imagine, that a great town, with spacious streets and commodious buildings, would attract the stranger, and pave the way to its greatness. In the short space of two years, they had dissipated their fortunes, amounting, it is supposed, to no less than 500,000 pounds. Happy indeed would it have been, if the late Surveyor-General had succeeded in his strenuous attempts to encourage these loyal people, at the time of their emigration, to settle along the coast in the neighbourhood of Guysborough, at the eastern extremity of the Province, where the lands are exceedingly good, and the fortunes they possessed, would have enabled them to purchase extensive and valuable farms.”—*Charles Morris*.

The river at the head, drains from a range of lakes, lying East and West, twenty miles from the salt water.

On a river, which empties itself into the harbor, are seated a grist and saw-mill.

CAPE NEGRE, a bold, black, rocky head, S. W. $\frac{1}{2}$ W. fifteen miles from Shelburne light, is the southern extremity of an island, within which is the harbor, called by Des Barres, Port Amherst, known to the inhabitants and fishermen by the name of Cape Negre (or Negro) Harbor.

Its entrance is rendered difficult by two sunken rocks, one 9 feet under water, N. N. E. of the Cape; the other called the Budget, washes at low water, lies further to the northward, nearly in mid-channel.

In the passage eastward of the Budget, the water is 10, 12, and 14 fathoms deep, and the best direction to enter the harbor, is one-third from the rocks off the eastern point, till Shelburne light is shut in, which is the mark for being within the danger.

The N. E. side of Cape Negro Island is bold, affording excellent anchorage, in 4, 5, and 6 fathoms stiff mud.

The North end of the island is a low shingly beach: from it a bar extends across the harbor, to the eastern shore, with 15 feet water on it. Above, it is navigable six miles, a smooth clay bottom, 3, 4, and 5 fathoms deep.

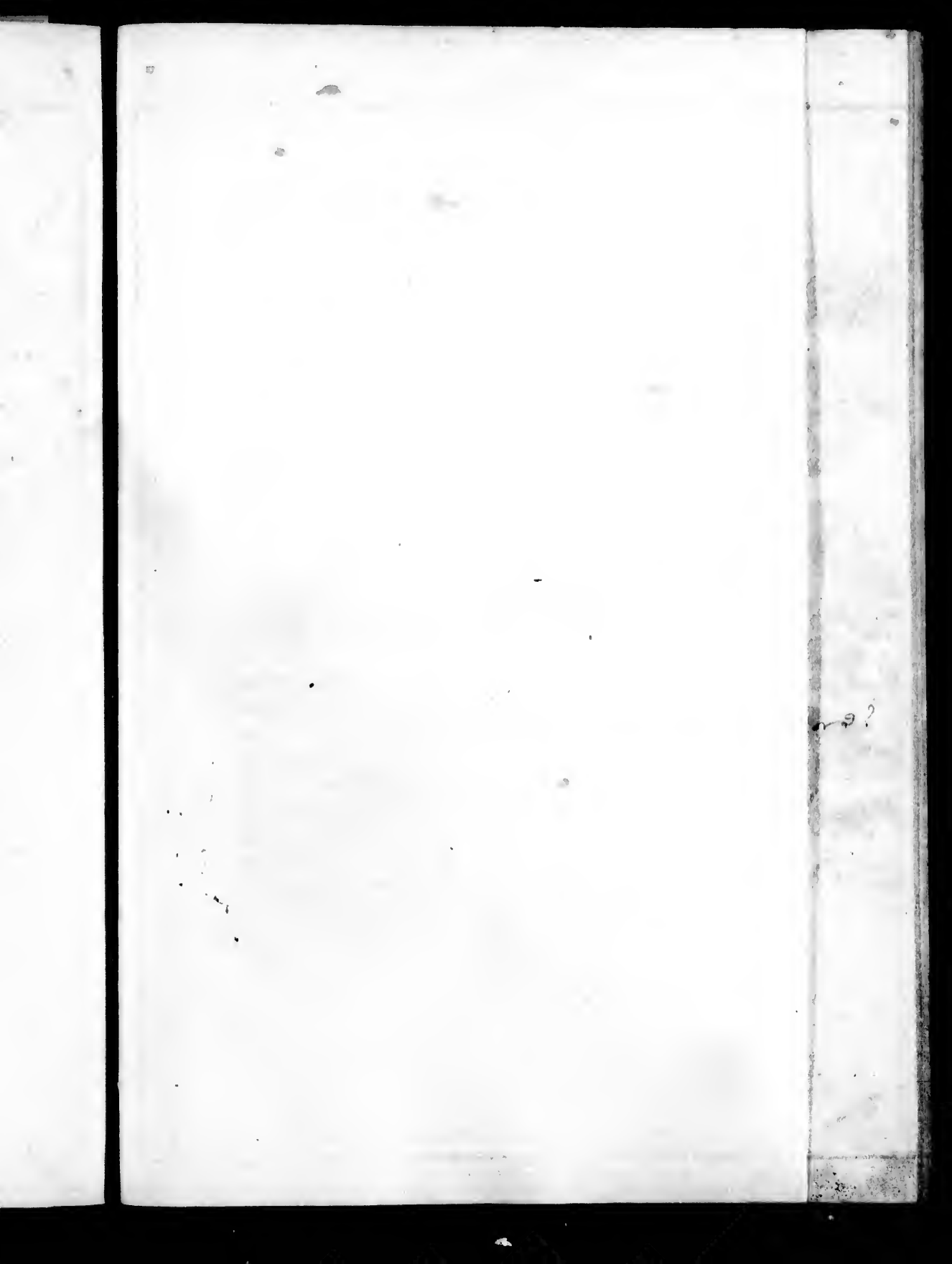
The passage on the West side of Cape Negro Island is full of rocks and ledges. Yet in desperate cases, (such as being in a disabled state, and caught by a S. E. gale,) it may be attempted, as the dangers shew themselves. In such circumstances, indecision or timidity would produce certain destruction. The commander's post should be aloft, and, if not possessing confidence, he should affect it.

CLYDE RIVER, descending twenty-eight miles from a chain of lakes, that extend E. N. E. and W. S. W. a considerable distance in the interior, falls into the head of this harbor.

The lands adjoining, were settled by a few families from Cape Cod in 1775, and at present, the population is four hundred and sixty-three persons. They combine farming and fishing with greater success than in any other part of the province, and raise considerable stock.

PORT LATOUR, separated from Cape Negro Harbor by a peninsula, is a shoal, ledgy, and bad harbor, capable of sheltering small craft only. The tide leaves a great part of the head of it dry. The lands about it are barren, and a little marsh assists to support the families at its head, who by dint of industry and great labour, have cleared ten or twelve acres.

BARRINGTON lies immediately within Cape Sable, and was originally settled by twelve French families, who cleared two hundred acres. In 1760, the lands now constituting the township, were granted to two hundred proprietors from the neighbourhood of Cape Cod; and in 1763, one hundred and sixty families had arrived, and brought with them their stock and fishing vessels. The village of Barrington was laid out, and the settlement assumed the pleasing appearance of prosperity. In 1784, arrived a few respectable loyalist families, whose knowledge of agriculture tended much to improve the place. The lands are stony, but afford excellent pasturage, enabling the inhabitants to keep a large stock of cattle. They have within their reach every necessary of life, and many of its luxuries.





Published as the Act directed by A. L. Cameron, 1870, Chap. 104.

J. Peckham, Engr.

Cape Sable Island contains 2600 acres, a great part of which is under tillage. It has forty-seven families on it, who live in great comfort; many of them in good circumstances.

The population of Barrington township is 162 men, 163 women, 329 boys, 333 girls: total 987.

The harbor is choaked by sand flats that extend nearly from side to side. The channel winds between them, and affords safe anchorage in 18 to 26 feet. In S. W. gales there is good shelter on the N. E. side of Cape Sable Island in 4 to 5 fathoms, sandy bottom.

The passage leading into the Bay of Fundy is much used by coasters, who know its intricacies. The tide of ebb is forced unnaturally through to the eastward, by the bay tide, at the rate of 3, 4, and sometimes 5 knots.

Off Barrington Bay and E. 17 S. nine miles from Cape Sable, lies the Brazil Rock, covering an area of about ten yards. I examined it in a perfectly calm day, and sounded it with a 32 foot pole. A tail extends ninety or a hundred yards from its base, with from 6 to 8 fathoms water. The tide running strong over this, causes a great ripple, and makes the rock appear larger than it really is. The soundings towards the shore are regular, from 15 to 19 fathoms; but to the southward of the rock you fall into 22, 30, and 35 fathoms, say at the distance of one mile. Between Cape Sable and Brazil you have 17, 20, and 24 fathoms, sandy bottom.

Nov 2?

Published on the 1st of January, 1848.

Published on the 1st of January, 1848.

30'

30'

30'

30'

30'

Cape Sable is a small low sandy island (distinct from the island before-mentioned,) with a few scrubby trees in a state of decay, on its eastern extremity. The cliffs are white, distinguishable at the distance of five leagues, but are broken and sensibly decreasing. In 1760, by Mr. Des Barres' account, they were one hundred and twenty feet perpendicular, and when this survey was taken, the highest was only sixty-one feet: they range W. N. W. and E. S. E. two miles in the shape of a half-moon, convexing northerly: and off each point is a ledge; the eastern called the Horse-shoe, extending two miles and a half S. E. by S. the western, or Cape Ledge, runs off three miles, formed by detached bodies of shingle and rock. The tide, both ebb and flood, sets immediately across them; the flood westward, the ebb to the N. E. by its rapidity causing a strong break to a considerable distance from the shore.

It is essential to the safety of those navigating the Bay of Fundy that it be clearly described and distinctly understood. To that end much labor has been bestowed: the vessels and boats kept constantly and actively at work, and even lives expended, by pressing the work with a degree of ardor necessary to its execution.

The Charts are made upon a scale sufficiently large to shew all the dangers and the intricacies of the channels; that in cases of necessity places of safety may be resorted to without a pilot: although no man, having charge of a vessel of consequence, can justify the economy of saving pilotage on a coast where currents, fogs, and changes of weather may confound the best judgment.

The description will, if attentively read, remove from the minds of strangers the hideousness with which fancy and ignorance have gloomily clothed this excellent portion of America. Two large ships from Europe were wrecked within a few days of each other, on the S.W. coast of Nova Scotia; and many others, recently accounted for in the same way, sanctions the received ill opinion, without producing the precaution necessary to prevent a recurrence of such losses, arising from the most palpable and unpardonable negligence. I instance a few, and pledge myself for the verity of the statement: the authors of these calamities will doubtless avoid a recognizance, as the mention of them is to excite caution, and not to involve the parties in any further consequences. A valuable coppered ship, with light airs of wind drifted on the rocks, although the fishing lines were in use at the time, and one of them attended by a principal officer of the ship: the breakers heard, and the depth known: in the last extremity, a kedge anchor let go. The ship bilged, and the passengers landed safe.

On a point from which soundings gradually deepen to a considerable distance, say forty miles, a large coppered ship ran, and having landed her passengers, was sold as usual, for the BENEFIT of the underwriters.

One ship ran upon a beach, and the crew landed without wetting their feet.

A deep laden brig bound to Passamaquoddy in August, 1817, sailed through the Manan outer ledges, and ran above the dry ledge within the Three Islands: the percussion drove her off

and having anchored, the crew landed to enquire what part of the coast they were upon.

A ship from Jamaica grounded on the beach within the Mutton Islands, West of Cape Sable; having passed ledges between which a skilful pilot would scarcely venture. After receiving information from the inhabitants what port they were in, they hove off, and proceeded to Halifax, the place of their destination. These happened within a short period, and numerous other instances might be adduced, to prove how little the lead is used, which ought to be constantly kept going in approaching the coast.

The necessity of frequently sounding with the deep-sea lead, and the expediency of having anchors and cables ready for immediate use, cannot be too strongly urged, or too often repeated. Vessels well equipped, and perfect in gear, wrecked in moderate weather with anchors stowed as in the middle of the Western Ocean, bound into the Pacific, has happened so frequently that such gross idleness cannot be too much reprobated. The serious losses that have thence lately occurred to the underwriters will tempt them to give this little work currency.

Seal Island lies W. by N. twenty-one miles from Cape Sable, in length two miles North and South. The Southern part is covered with scrubby trees, elevated thirty feet above the sea. This being the elbow of the Bay of Fundy, presents an excellent position for a light-house. South of the Island's South end, two miles and seven-tenths, is a rock uncovered at low water, on which His Majesty's Ship Blonde was lost in 1777; it has 7, 9, and 10 fathoms round it. The overfalls, a mile to the west-

ward of the Blonde, are heavy and dangerous: in a calm, the sloop Examiner lost her bowsprit and nearly swamped. These break and present an alarming spectacle. North of this, four miles, lies a bed of shoal ground (without the tuskets,) on which is 16 feet: this causes a violent ripple.

The American fishermen resort to the island for wood and water: the former they obtain in abundance from the frequent wrecks; the latter is supplied from a large pond in the centre.

Five low ragged islands, between four and five miles N.E. from the seal, are frequently called the North Seals, though known to the fishermen as Mud Islands. Between them and Seal Island the passage is good for any ship. Large vessels should keep within one mile of Seal Island, as the overfalls, eighteen feet, lie a short mile from Mud Island. Soldier's Ledge, bare at half ebb, lies N. W. of the South Mud. Devil's Limb is seen at all times: the Limb's limb at half tide. The smoothest anchorage is within these rocks, in 4 to 5 fathoms, clear sand. Wild fowl and fish are here in abundance.

On one of these Islands some thousands of Pettrels, or Mother Cary's chickens, annually hatch their young. They burrow under ground diagonally, three or four feet deep, and sit on one egg; flitting about the surface in astonishing numbers, searching for food, and cast a sickly foetid effluvia. Many naturalists have attributed to this little winged mariner the property of breeding its young on the water, by delivering its egg, and diving to catch it under the wing, whence the young one is said to come.

PUBNICO, though little known, is an excellent ship harbor, easy of access, and so situated that vessels entering the Bay of Fundy in distress, may find shelter and supplies. From the South end of Seal Island to the entrance of this port, the course is N. 51 E. twelve or thirteen miles, 20 to 16 fathoms deep; in entering the harbor, the depth is 7 to 12 fathoms up to the beach, the proper place of anchorage for a stranger. Above the beach, on the western side, lies a ledge, partly dry at low water.

The population of Pubnico is forty-four men, forty-five women, one hundred and nine boys, and eighty-seven girls. Two miles South of Pubnico entrance is St. John's Island, from the outer part of which, to the beach in Pubnico, the course is N. N. E. two miles and a half. Under the island's North side, the shelter is good in S. E. gales, and small vessels lie round the beach forming its East part. Coasters use the passage within St. John's, the Mutton, and Bonne-portage Islands, by Cockerwit: thence towards Barrington by Shag Harbor; but none of these places merit particular notice, being generally shoal.

Cape Forchu, or Forked Cape, forming an apparent entrance, may be mistaken for the passage into Yarmouth, which is eastward of this Cape. The harbor is safe, but of mean capacity, with sunken rocks in the entrance. The fair way is on the eastern shore, till opposite the point on the East side: at the top of this point or isthmus, stands the battery: under its lee, or to the northward, is the anchorage, in 5 or 6 fathoms, good ground.

CAPE FORCHU HARBOR and YARMOUTH are one and the

same, although in Des Barres' charts they are separated, and by a palpable error, Jebogue is called Yarmouth.

The town of Yarmouth is above this anchorage upwards of a mile, and is respectable: the houses are large, but scattered; the people generally in good circumstances, and the vast increase of population proves the country's resources good.

The land in the township exceeds a hundred thousand acres; three thousand are marsh, one thousand dyked, two thousand undyked: the upland improved, may be ten thousand. The yearly produce of hay is upwards of five thousand tons.

In 1791, thirty years after the first settlers came hither, there were in the township 215 houses, or 1300 souls.

In 1808, there were 340 houses, 2500 souls.

In 1816, there were 450 houses, 3237 souls.

From Cape Fourchu to Point Jegogan is S. $\frac{1}{2}$ W. the low-land between forms a deep indent; thence to Cape St. Mary's, the land gradually runs high, the Cape being the highest; from Cape Fourchu to Cape St. Mary's is nineteen miles, N $\frac{1}{2}$ E.

Green Island and the Gannet rock lie off Cape Fourchu; the latter ten miles distant, is bleached by bird's dung, and thirty-six feet above the sea at high water. Some *vile* copies of Des Barres mark it as appearing at half tide, and the Admiralty charts have copied this error. His Majesty's Brig Opossum, in 1816, struck on a ledge that appears at half ebb, S. W. of the Gannet, two miles: many vessels with their crews have suffered on it.

The course from Seal Island up the bay, to sail westward of this ledge is N. N. W. fourteen miles.

West of this danger the tide sets North and South, from two to four miles per hour: close to it, it courses W. N. W. and E. S. E.

From Cape Sable to pass between Seal and Mud Islands, steer N. W. by W. seven leagues. In this distance are several overfalls from 7 to 15 fathoms, gravelly bottom. These in spring tides break violently. The North end of the Seal Island is bold to one cable's length, 7, 8, 10 fathoms: the opposite side of the channel has a shoal bank in it, on which some ship of war struck in 1796.

Trinity lies S. W. by W. six miles from Cape St. Mary's, and S. by W $\frac{1}{4}$ W. sixteen miles from Cape Fourchu: this danger covers a small space, say three-fourths of an acre, and three small rocks shew themselves in low tides: the stream runs forcibly over them: the anchorage in their neighbourhood is tolerably good to stop one tide: the depth is 12 to 15 fathoms for one mile round it. Lurcher lies W. N. W. from Cape Fourchu fourteen miles, has 12 feet on it, and covers an area of three acres with spots of shoal ground; distinct from it a mile to the N. E.

From Cape Sable to Tusket passage is N. by W. twenty-seven miles; from Cape Sable, southward of all these, West thirty-five miles: the bay is then open, and the course up N. N. W. This course will clear the Lurcher, which is the outer danger; but the tide will make one point difference in the course, as it sets S. E. and N. W. through the Mud and Tusket Islands, and near

the Manan ledges; the ebb W. S. W. and flood E. N. E. at a great rate, say four knots.

From Seal Islands up to Cape St. Mary, the soundings extend twenty and thirty leagues off: but West of Brier's Island and near Manan ledges, there are 60, 80, and 100 fathoms, at three or four miles distance; therefore in doubtful cases the lead should be kept going.

Within the Seals, that is, to the North-eastward of them, lie a vast number of Islands, known by the general name of Tusquets, some of them large; with good, although intricate passages leading to the Tusket River, Argyle and other settlements. Many of the Islands are improved and made valuable, affording excellent pasturage for sheep and cattle. The westernmost cluster of these lie North of the Mud and Seal Islands, called the Bald Tusquets, connected by shoals and ledges, leaving East of them a narrow passage, which is distinctly seen on approaching from Cape Sable within the Seals.

From the Cape Ledge, the course to the passage is N. by W. The Owl's Head, within the passage, is seen six or eight miles off: this should be kept nearly touching the eastern land, until you get within half a mile of the entrance. A dangerous rock, the Old Woman, seen at two-thirds ebb, lies E. by N. from the small bold, southernmost island, and S. by E. from the passage.

A ledge partly uncovered at low water, extends three-fourths across the entrance from the eastern shore: the western side is

bold, 7, 8, and 6 fathoms depth: the tide here runs with great strength. Half way through, a small inlet offers shelter to vessels of moderate size, in 4 or 5 fathoms mud, and small vessels anchor inside the Spectacles, the two northernmost islets. At the North entrance a ledge lies, from the West side about half way, obliquely North-eastward.

Northward of the passage, the tide being less confined, runs easier, and the anchorage is pretty good; the little harbor of Jebogue is shoal, frequented only by coasters.

The lands are good, of a moderate height, and well settled; wearing the appearance of successful industry.

On the West side of BRIER'S ISLAND stands the light-house, a building so vilely constructed, and so ill lighted, that it is justly considered a public nuisance. The author took from its lantern a wooden pane from among many of the same kind: and in consequence of his strong representation, it was altered by the Commissioners of the Provincial Lights, and improved as far as the building would admit; but no reliance should be placed on it.—The population is twenty-five men, twenty-seven women, forty-nine boys, forty-six girls: total one hundred and forty-seven: it contains three thousand acres. LONG ISLAND has twenty-two men, twenty-two women, forty-nine boys, forty-two girls, and contains seven thousand acres.

GRAND MANAN

FORMS a part of Charlotte County, in the Province of New Brunswick: its length is fourteen miles and a half, width seven miles: the gross contents may be estimated at thirty-seven thousand acres. The northern point is in latitude $44^{\circ} 52'$, longitude $66^{\circ} 45' W$.

It lies nine miles from the nearest part of the district of Maine, and thirty-five miles from Brier's Island, which is to it the nearest part of Nova Scotia. From thus standing in the middle of the Bay of Fundy, it is obviously of importance in a political view, commanding a sight of all that passes to and fro; and possessing places of natural strength, and harbors of perfect security for vessels of war, its retention in the hands of our Government must be desirable.

It is subject to the same vicissitudes of climate as Nova Scotia, except the winters are less severe, being tempered by the sea air.

Its fisheries are in great esteem with the Americans: upwards of a hundred sail of vessels, besides boats, have at one time been seen at anchor on the ridge at Long Cove.

The farmers who have lately settled in the interior, speak very favorably of the nature and properties of the soil. All they have attempted, has answered fully their expectations. The ground under tillage may be computed at two thousand acres.

The soil is in general good, abounding in many places with an argillaceous earth; and to judge from the growth of the timber with which it is covered, there is no doubt it would amply repay the toils of the husbandman. It produces all the species of fir, birch, beech, and maple, in size and quality adequate to all the purposes for which they are generally used.

Lime-stone is found on the largest of the three isles, but very little used, from the difficulty of shipping it.

The population is seventy-one families: seventy-four men, seventy women, one hundred and nineteen boys, one hundred and twenty-one girls, three hundred and eighty-four total. They are chiefly from the States, and from the constant intercourse, are strongly tinged with American manners and principles: a large portion of the best lands are the property of residents in the United States.

A pair of Moose purchased by Mr. Gerrish, one of the original settlers, were turned on the island, and have considerably multiplied: twelve were killed last winter. They afford excellent and profitable sport for the inhabitants.

It may not be improper to give a short account of these animals. The Moose, when erect, is six feet high; the male has

horns, almost as enormous as the Elk ; the stem of them however is not quite so wide, and they branch on both sides like those of a deer. They shed them annually in February and March. Though the hinder parts of this animal are very broad, its tail is not above an inch long. It has feet and head like a camel ; its head is about two feet long, the upper lip much larger than the under, and the nostrils are wide. The hair is light grey, mixed with a blackish red. It is very elastic, for though it be beaten ever so long, it will retain its original shape. The flesh is exceeding good food, easy of digestion and very nourishing. The upper lip, which is large and loose from the gums, is esteemed a great delicacy, being of a firm consistence, between marrow and gristle, and when properly dressed, affords a rich and luxurious dish. Its hide makes good leather, being thick and strong, yet soft and pliable. The pace of this creature is always a trot, which is so expeditious, that it is exceeded by few of its fellow inhabitants of those woods. It is generally found in the forests, where it feeds on moss and buds. Though of the deer kind, they never herd as those do. They go eight months with young, and bring forth two at a time : the breeding season is in June. Most authors confound them with the Elk, Deer, or Carraboo, though they are a species totally different.

The cliffs on the Island's west side are nearly perpendicular, rising 600 feet above the sea level, and but one little inlet, Dark Cove, along the whole range, that will afford shelter even for boats. The northern head is equally abrupt and bold : on the eastern side of it is an anchorage called Whale Cove, in which ships can lie to wait the tides, in southerly gales. The depth is

from 15 to 25 fathoms, but this place is completely exposed to northern gales.

The Swallow's Tail, or N. E. point of Long Island Bay, named from its horizontal shape, is bold, ragged, high, and barren. This anchorage is easy of access, as an open bay possessing all the advantages of a harbor. Under Long Island, opposite the beach, ships may anchor, even locking the North end of Long Island in with Swallow's Tail, in strong muddy bottom, unaffected by sea or wind from any quarter. In the northern part of the bay the bottom is a stiff clay: and vessels ill provided with gear have rode out severe gales without apprehension. The bottom in the whole bay is muddy with 7 or 8 fathoms, except a ridge extending from the ledge that shews itself within Swallow's Tail, and the North end of Long Island. On this ridge is from 10 to 12 fathoms: it is composed of rocks and gravel. A small bunch of sunken rocks lie half a mile N. N. E. from Long Island point, five feet under water at low spring tides.

Under Great Duck Island the ground is good: attention to the plan is necessary in running in without a pilot. When the tide is high, the dangers are hidden.

South-westward of Duck Island lie Ross, Cheney, and White Head Islands, the latter belonging to W. Frankland, a pilot, who is constantly on the look out; many vessels have been saved from shipwreck by his activity. The cove opposite his house is a resort for fishing vessels, but with an easterly wind it is an ugly place.

The western side of Ross Island forms a part of Grand Harbor, a shallow, muddy bason. Ships may enter it and lie in the mud, perfectly secure: a convenience very desirable when without anchor or cable, which may occur to vessels recoverable from the outer ledges. At the entrance the depth is from 5 to 7 fathoms, clay bottom; narrow, yet secure from any sea.

The lee of Green Islands, and also Kent's or Three Islands, afford good casual anchorage, mud bottom with 7, 10, to 14 fathoms.

Wood Island and the S. W. tongue of Grand Manan, form a large space of excellent anchorage. The upper part of this inlet, and the head of it, in a gale of wind, afford secure anchorage. Those places are all well settled, and afford supplies.

The shore of the district of Maine is bold, and vessels beating through, generally stand from side to side, particularly in foggy weather: the channel is seven or eight miles wide, from 12 to 70 fathoms deep. The tide courses regular and strong through it. Under Passamaquoddy Head is good anchorage.

MANAN LEDGES.

The most dangerous is the Old Ledge, or Proprietor, spreading a space of half an acre at low water. When covered, the tide runs directly over it, at the rate of four knots. From the Gannet, it is N. 82 E. seven miles. Three miles S. E. from Old Ledge,

lies Clerk's Ground: and East from it, nearly four miles, lies the Roaring Bull, a bank with 8 fathoms water, causing an extremely heavy and dangerous ripple. The S. W. head open of the Three Islands, or rather the S. W. head kept open of all other land, will lead clear to the southward of these dangers. The North-easternmost high land, open of the little lumps of islands, which shew themselves on the East side of the Manan, will clear to the eastward of them. In easterly winds the tide rips are impassable.

The particular marks are given in the chart, but here they would rather confuse than guide a stranger.

South of the S. W. point of White-head Island lies a range of rocks with deep water between them, but causing a continued rip, three miles from the shore, home to the Long Point. They are, the Tinker, Three Diamonds, Rans, with many others unnamed. Some shew themselves, others have 3 and 7 feet on them.

The Three Islands, the southernmost of the cluster of Manan, are low and ledgey. The East side of the largest is bold, to the rocks that appear at all times. Off their N. W. sides a sunken ledge lies, called the Constable, dry at low water.

S. S. W. of the Three Isles, four miles, is the Gannet, a small rock, forty feet above the sea; this being dry in all weathers, and near all the dangerous rocks, would be a fine situation for a light-house, and save many ships. It has a number of small ledges and sunken rocks about it, that are always breaking.

Vessels damaged or lost on the rocks near Manan, since
October, 1791.

Ships—British Queen, Denniston, from Greenock, on the old
ledge, damaged.

Golden Grove, St. John, lost on the old ledge.

Duke of Kent, sunk on the Murre Ledges: from St. John.

Penelope, St. John, lost on the Black Ledges.

Brigs—One from St John's with plaister, sunk on the old ledge.

Mary-ann, St. John, stove on Long Ledge.

Leander, England, on a ledge near Three Islands, lost.

Schooners—Mary, Digby, on the Murre Ledges, cargo lost.

Cook, Boston, on the middle ledge, cargo damaged.

Neptune, St. John, lost on the old ledge.

The Wolves, a cluster of small islands, lie from Manan North
nine miles: E. N. E. twelve miles from Passamaquoddy entrance.
They are from sixty to one hundred feet high, steep and bold:
the passages between them are deep, and as a casual anchorage,
their lee is safe, in 12 to 20 fathoms. Between these islets and
Manan, the depth varies from 40 to 67 fathoms, muddy bottom.

The tracks marked on the chart shew the proper channels up,
in case of taking them without a pilot.

The sunken rocks and ledges which lie at a considerable
distance from the South-western shores of this island, with the
rapidity and various directions of the tides' courses, constitute the
chief dangers of the Bay of Fundy.

These have hitherto been known only to the fishermen, and a few active settlers, who have resorted to these places for the purpose of procuring their winter's supply of fish.

No chart extant shews the dangers of Manan: no book of directions that I have ever seen, explains the courses and rates of the tides.

The repeated instances of shipwreck arising mostly from deficient information concerning these dangers and tides, drew from the merchants of St. John's city an application to the Lords of the Admiralty for a survey of the Bay of Fundy.

The entrance of **PASSAMAQUODDY BAY** formed by Campo Bello on the South, and Spruce and White Islands on the North, is in width three miles; the greatest depth is 75 fathoms. The tide of flood strikes across from the S. E. land to the White Islands with great strength, and in light winds must be particularly guarded against. The water between is very deep, and inside of White Horse you may anchor in 45 fathoms mud. A ledge N. W. one mile from White Horse, is 12 feet beneath the surface at low water.

The various harbors and rivers of this interesting bay shall receive their merited attention so soon as the line of demarkation between His Majesty's provinces and the United States is determined.

On the North part of Campo Bello without Passamaquoddy lies **HEAD HARBOR**; this is secure, and in it 6, 7, 8, fathoms: it is small and perfectly safe, with mud bottom.

Quaddy Light stands upon a low point of the N. E. extremity of the district of Maine, and at the S. W. entrance of Passamaquoddy. It is in contemplation the placing an alarm bell in the light-house. Northward of this light, between Campo Bello and Maine, there is good anchorage, but the passage is shoal and intricate. At the Seal and Mud Islands the ebb runs East by South, South-east, and South, as influenced by the shape of the lands, and direction of the winds.

The city St. John, on the North side of the Bay of Fundy, forty-five miles from Manan, stands on an irregular descent, with a southern aspect, and on entering the river, presents an agreeable and imposing appearance.

The river's mouth is narrow and intricate; many accidents have happened to those who attempted the navigation without a pilot.

Partridge Island is about two miles southward of the city, answering the double purpose of protecting the harbor, and by its light-house guiding the mariner to the place of his destination: the lantern is one hundred and sixty-six feet above the sea level, and the light is tolerably good.

The bottom for several miles southward of Partridge Island is muddy, and the depth gradual, from 7 to 20 fathoms, affording excellent anchorage: the passage westward of this island has in it 10 feet, and eastward of it 16 feet: opposite the city the anchoring depth is from 7 to 22 fathoms.

Three-fourths of a mile North of the light-house stands a beacon, on the end of a rocky ledge, forming the West side of the channel, with deep water close to it.

After the first quarter flood, the tide below the surface runs into the harbor; during summer and the depth of winter, at half flood, the tide generally flows in: in the spring and fall, when the river is charged by rains or the melting of the ice, the water streams out, or seaward, continually; therefore at these periods a vessel seldom enters the harbor without a fresh leading wind. At full and change the tide flows until half-past eleven: the vertical rise 24 to 28 feet: common tides rise 18 feet.

Within the last year a breakwater has been erected at the eastern side of the entrance, below the town, intended to intercept the violence of the sea, occasioned by southern gales.

Every possible facility and convenience is given to ships wanting repair: they lie upon blocks, and undergo a thorough examination, without incurring the expence, the injury and loss of time, occasioned by heaving down, so strangely persisted in at the contiguous Port of Halifax.

The river branches many hundred miles zig zag, through a country abounding in excellent timber, coal, limestone, and other minerals: with lands favorable to agriculture—resources that will, if properly managed, enrich the city, and increase its consequence.

“ Common tides rise below the falls from 18 to 20 feet, and

in spring tides about 4 fathoms: above the falls they seldom rise to more than 4 feet. The current runs down till half-flood, and up till half ebb. The falls are smooth every half tide from fifteen to twenty minutes, at which time they may be passed without danger by all vessels for which there is sufficient soundings: the greatest rise at the falls is equal to half the rise of the tide."—*R. G. Bruce, Engineer, 1761.*

"River St. John has sufficient depth of water for large ships to the falls, whence it continues navigable eighty miles up into the country for vessels of one hundred tons. At Fort Frederick the tides rise 18 feet, and at Equinoctial spring tides 25 feet; above the falls, it seldom flows more than 4 feet. When the tide has risen 12 feet at the fort, the falls are smooth, after which, during twenty minutes, they are passable. At times of great freshets, which generally happen between the beginning of April and the middle of May, from the melting of the snow, the falls are absolutely impassable for vessels bound up the river, as the tide does not rise to their level."—*Des Barres.*

"After passing the falls you enter a gullet, which is a quarter of a mile wide and two miles long; winding in different courses, and having 16 fathoms in the channel. Next to this gullet is a fine large bason, a mile and a half wide, and eight miles long, entering the main river."

"There is water sufficient (except in dry seasons) for vessels of fifty tons, as high as Frederickton, and in all the branches of the lakes."

“ In the middle of May (or earlier in favorable seasons) the snow and ice in the country melting, make a general overflow in the river, which in some years rises so high as to inundate all the low lands.”

“ The overflowings were measured in 1765 by the markⁿ set up at Majorfield: the water was found to have flowed 17 feet above the common height of the water in summer.”

Remarks by Charles Morris, Esq.

Twelve miles westward of Partridge Island is MUSQUASH, that has four fathoms water, with good anchorage at the mouth.

From Partridge Island W. S. W. twenty-seven miles, is Point Lapreau; the shore between is bold, the land broken and high. This point ought to be classed as one of the dangers of the Bay of Fundy: many serious accidents have lately happened in the neighbourhood of this promontory. Four miles East of it are the harbors of Dipper and Little Dipper; the former good for small craft; the latter having but 12 feet water, is fit only for boats. Westward of Point Lapreau is Mason's Bay, a deep and ugly indent. Ships bound to the River St. John, dreading to pass its mouth, frequently get imbayed, and some valuable vessels have thus been wrecked. At the head of this bay, is good shelter in a place called Pok-logan.

The city St. John contains, say nine hundred houses and six thousand inhabitants, but until better materials are collected, an account will not be given: but an idea of the abundance of the finny inhabitants of its waters may be conceived by the fact

of 50,000 barrels of salmon and herring having been taken and cured the last season, 1817.

From St. John's eastward to QUACO, the land is high, and the interior hills rise in easy inequalities; but near the shore the cliffs are abrupt, and the ravines, here and there, deep and gloomy: the indents have beaches, and Black River, twelve miles West of Quaco, is a safe inlet for a small vessel, but dry from half tide. The bank of gravel off Quaco lies W. N. W. and E. S. E. in shape of a sole: the widest and shoalest part westward, leaving a mile space or channel between it and the dry islet off Quaco Point. The bank in itself is a mile long, and a third of a mile wide. Vessels frequently ground on it. The lands in St. Martin's neighbourhood are moderately good, but broken, steep declivities, small vallies, abrupt precipices, and light soil, that does not retain the manure. The bay is often ruined from the limited and short intervals of sun shine; the humid blustering, and changeable weather. The inhabitants struggle hard for a maintenance, and often in vain.

From Partridge Island to ANNAPOLIS the course is S. 4 E. distance thirty-five miles; the depth across 7, 25, 64, and 40, soft bottom. The gut in clear weather is easily distinguished, and in a fog S. by E. easterly with the ebb, and S $\frac{1}{2}$ W. with the flood, will certainly hit it. Strangers frequently mistake a fall in the land called Gulliver's Hole, for the Gut of Annapolis: this error is seldom of consequence, as the wind on shore is generally clear.

The abrupt precipices of the high lauds form the gut, and

cause flurries of wind that course in all directions, and rush violently from the summits of the hills. The tide hurries through the gut with great force. There is not anchorage except very close in shore, near the outer western point. In some places the depth is 40 to 80 fathoms, and in entering Annapolis Bason the scenery is inexpressibly beautiful, and if our wandering countrymen in affluence would cross the Atlantic instead of the Channel, the bold and imposing scenery of Canada, Cape Breton, Acadia, or New Brunswick, would rivet their astonishment. The features of nature are here presented on a grand scale. Lakes oceanic, rivers whose branches or arms would pygmatize the largest in Europe, if divested of their Commercial importance.

For many years a small light-house, standing on the West point of the entrance, directed the navigator to the gut of Annapolis, and a fine harbor, a fertile country, an extensive and profitable fishery with a town settled by authority, and in honor to Her Majesty Queen Ann, were promising advantages, but by a change of circumstances, the capital was removed to a sterile, rocky, and broken neighbourhood: and the light-house being destroyed by fire, was suffered to remain extinct till 1817, when four hundred pounds were voted for the one lately erected: one hundred pounds of this sum was to have been raised by the inhabitants of Annapolis and Digby. But it appears that the whole expence of the building will not exceed three hundred and fifty pounds, and it stands a monument of mistaken economy. The light is to be exhibited from a window, one hundred and twenty feet from the surface of the water.

In the American war, most of the vessels belonging to this port were taken: but it is rapidly recovering these losses.

The farms are growing valuable and extensive. The herring fishery is a source of great profit; they are so well cured that the merchants of Halifax and St. John give them a decided preference for foreign markets.

The packet between Digby and St. John is well regulated, with good accommodations, and generally makes the passage in a few hours.

The BASON OF MINES and CHIGNECTO BAY, surrounded by valuable settlements, and abounding in coal, plaister, limestone, and other minerals, are at the head of the Bay of Fundy, and will be connected with the account of New Brunswick in the next edition.

Ships bound up the Bay of Fundy should make the American shore near Machias, instead of the eastern side, because the former is bold, and the prevalent winds from the westward secures to them the passage.

TIDES

In the Bay of Fundy are very rapid, but regular; and although the wind against the tide alters the direction of the rippling, and sometimes makes it dangerous, it has little or no effect on the courses of the tides.

The flood sets from Cape Sable to the North-westward, at two to three knots, through the Seal Islands and Bald Tusquets: obstructed by these islands, its rate is increased to four or five knots; thence taking the direction of the shore, flows past Cape St. Mary, thence N. N. W. towards Brier's Island. The flood sets but slowly up the extensive Bay St. Mary, which adds to its strength along the eastern shore. This vast body of water rushing up, and the bay narrowing, suddenly causes it to fill the Bason of Mines and Chignecto with vast rapidity, and rise to even 75 feet.

FINIS.

NEW WORKS

JUST PUBLISHED,

OR PREPARING FOR PUBLICATION,

By T. CADELL AND W. DAVIES,

STRAND.

I.

THE LATE BISHOP WATSON'S LIFE.

Anecdotes of the Life of RICHARD WATSON, Bishop of Landaff, written by himself at different intervals, and revised in 1814. Published by his Son, RICHARD WATSON, LL. B. Prebendary of Landaff and Wells, handsomely printed in Quarto, with a Portrait of his Lordship, from an original Picture, by Romney, Price 2*l.* 12*s.* 6*d.* in boards.

II.

DR. DRAKE'S AGE OF SHAKSPEARE.

Shakspeare and his Times; including the BIOGRAPHY of the POET; Criticisms on his Genius and Writings; a Disquisition on the object of his Sonnets; a new Chronology of his Plays; and a History of the Manners, Customs, and Amusements, Superstitions, Poetry, and Elegant Literature of his Age. By NATHAN DRAKE, M. D. Author of "Literary Hours," and of "Essays on Periodical Literature." Elegantly printed in two Volumes 4to. with a Portrait, engraved after a Cast made by Mr. G. Bullock, from the Monumental Bust at Stratford upon Avon. Price 5*l.* 5*s.* in boards.

. A few Copies upon large paper, for the purpose of illustration, price 7*l.* 7*s.* in boards.

III.

DR. CLARKE'S NORTHERN TRAVELS.

Travels through Denmark, Sweden, Lapland, Finland, Norway, and Russia; with a Description of the CITY of St. PETERSBURG, during the Tyranny of the Emperor Paul. By E. D. CLARKE, LL. D. being the Third and last Part of the Author's Travels in Europe, Asia, and Africa. Handsomely printed in 4to. with numerous Engravings of Views, Maps, &c.

IV.

MESSRS. LYSONS'S DERBYSHIRE.

An Historical and Topographical Account of Derbyshire; being the Eighth Part of MAGNA BRITANNIA, or a concise Account of the several Counties of Great Britain. By the REV. DANIEL LYSONS, A. M. F. R. S. F. A. and L. S. Rector of Rodmarton, Gloucestershire, and SAMUEL LYSONS, Esq. F. R. S. and F. A. S. Keeper of his Majesty's Records in the Tower of London. Handsomely printed in 4to. with numerous Engravings of Views, Antiquities, &c.

* * * The following Counties are already published :—

Bedford.....1l. 11s. 6d. in boards.	Cheshire.....3l. 3s. 0d. in boards.
Berks.....2l. 12s. 6d. in boards.	Cornwall.....3l. 15s. 0d. in boards.
Bucks.....1l. 11s. 6d. in boards.	Cumberland.....3l. 3s. 0d. in boards.
Cambridge.....2l. 2s. 0d. in boards.	

V.

BRITANNIA DEPICTA, DERBYSHIRE.

Thirty-one Views of the most interesting and picturesque Objects in the COUNTY OF DERBY, (illustrative of Messrs. LYSONS'S MAGNA BRITANNIA,) with short Descriptions (being the Eighth Part of BRITANNIA DEPICTA), engraved by the first Artists, from Drawings made by J. FARINGTON, Esq. R. A.

* * * The following Counties are already published :—

Bedford.....1l. 1s. 0d.	Cheshire.....1l. 15s. 0d.
Berks.....1l. 1s. 0d.	Cornwall.....3l. 15s. 0d.
Bucks.....1l. 1s. 0d.	Cumberland.....3l. 15s. 0d.
Cambridge.....1l. 1s. 0d.	

VI.

MR. COOPER'S LETTERS.

Letters addressed to a Serious and humble Inquirer after Divine Truth, with a peculiar aspect to the Circumstances of the present Times. By the REV. EDWARD COOPER, Rector of Hamstall Ridware, and of Yoxall in the County of Stafford. Second Edition, in one Volume, 12mo. Price 5s. in boards.

VII.

SIR N. W. WRAXALL'S MEMOIRS OF HIS OWN TIME.

Historical Memoirs of my own Time. Part the First, from 1772, to 1780.—Part the Second, from January, 1781, to March, 1782.—Part the Third, from March, 1782, to March, 1784. By SIR N. W. WRAXALL, BART.—Third Edition, revised and corrected in 3 Vols. Octavo.

VIII.

**DON QUIXOTE, SPLENDIDLY EMBELLISHED FROM
PICTURES BY MR. SMIRKE.**

This new Publication of the celebrated Work of CERVANTES will consist of a revised Translation, carefully compared with, and corrected from, the best Editions of the Spanish Original, and illustrated by Forty-eight Engravings, besides Head and Tail Pieces to the several books, by Messrs. Heath, Raimbach, Warren, Fittler, C. Heath, Engleheart, Golding, Anker Smith, Mitan, Armstrong, &c. executed in the most highly finished manner, from Pictures by ROBERT SMIRKE, Esq. R. A. and will be brought forward in four handsome volumes. A few copies with proof impressions of the Plates on India Paper, will be printed in Quarto; a limited number, with the next impressions, in Royal Octavo; and the remainder of the Edition in Demy Octavo.

IX.

**MR. ADOLPHUS'S POLITICAL STATE OF THE BRITISH
EMPIRE.**

A General View of the Domestic and Foreign Possessions of the Crown; the Laws, Commerce, Revenues, Offices, and other Establishments, Military as well as Civil. By JOHN ADOLPHUS, F.S.A. (Author of "The History of England, from the Accession of King George III. to the Conclusion of Peace, in the Year 1783,") 4 vols. 8vo.

X.

**MR. HORNE'S INTRODUCTION TO THE STUDY OF
THE SCRIPTURES.**

An Introduction to the Critical Study and Knowledge of the Holy Scriptures. By THOMAS HARTWELL HORNE, in Two large Volumes, 8vo. illustrated with Maps.

This Work will consist of Three Parts:

PART I. will comprise a Concise View of the Geography of Palestine, and of the Political, Religious, Moral, and Civil State of the Jews; illustrating the principal Events recorded in the Bible.

PART II. will present a copious Investigation of the Principles of Scripture Interpretation, and their Application to the Historical, Prophetical, Typical, Doctrinal, and Moral Parts of the Sacred Writings.

PART III. will be appropriated to the Analysis of the Bible; including an Account of the Canon of Scripture; together with Critical Prefaces and Synopses to each book, upon an improved Plan.

AN APPENDIX will be subjoined, containing an Account, 1. Of the Principal MSS. and EDITIONS of the Old and New Testaments; 2. Of VARIOUS READINGS, with a digest of the chief rules for weighing and applying them; 3. Rules for the better understanding of HEBRAISMS; 4. A Concise Dictionary of the SYMBOLICAL LANGUAGE of Scripture; 5. Lists of COMMENTATORS and BIBLICAL CRITICS of Eminence, with Bibliographical and Critical Notices of each, extracted from authentic sources; together with Chronological and other Tables, necessary to facilitate the Study of the Holy Scriptures.

pl. 1.000

XI.

THE HISTORY OF THE CITY OF DUBLIN,

From the earliest Accounts to the Present Time; containing its Annals, Antiquities, Ecclesiastical History, and Charters; its present Extent, Public Buildings, Schools, Institutions, &c. To which are added, Biographical Notices of Eminent Men, and copious Appendices of its Population, Revenue, Commerce, and Literature. By the late JOHN WARBURTON, Esq. Deputy Keeper of the Records in Birmingham Tower, the late Rev. JAMES WHITELOW, and the Rev. R. WALSH, M. R. I. A. (Dedicated, by permission, to his Excellency Lord Whitworth). In Two Volumes, 4to. illustrated by Numerous Views of the Principal Buildings, Ancient and Modern, Maps of the City, &c.

XII.

PROFESSOR SCARPA ON DISEASES OF THE EYES.

A TREATISE on the principal Diseases of the Eyes, illustrated with Cases. By ANTONIO SCARPA, Emeritus Professor, and Director of the Faculty of Medicine in the Royal Imperial University of Pavia, Chevalier of the Royal Order of the Iron Crown, &c. &c. Translated from the Italian, with Notes. By J. BRIGGS, Surgeon to the Public Dispensary. The second Edition, considerably altered and enlarged, with Engravings, in one Volume octavo.



J. M'CARREY, Printer, Black-Horse-Court,
Fleet-Street, London.

t. Kan

-
b
s
-
S
is
e

-
to
c.
ic
te

