

20  
15  
1902 3/24

37

CHARACTER SKETCH

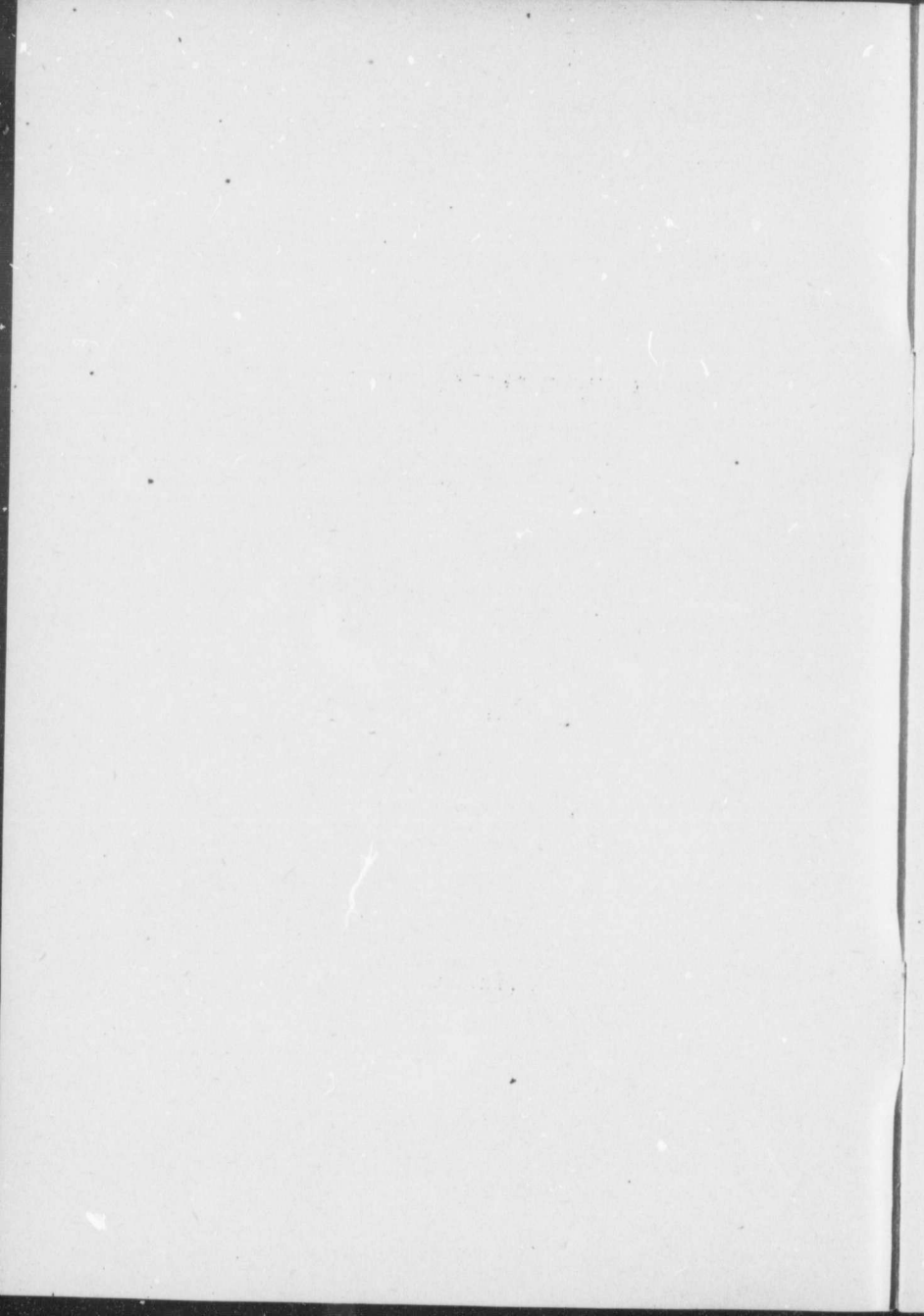
OF

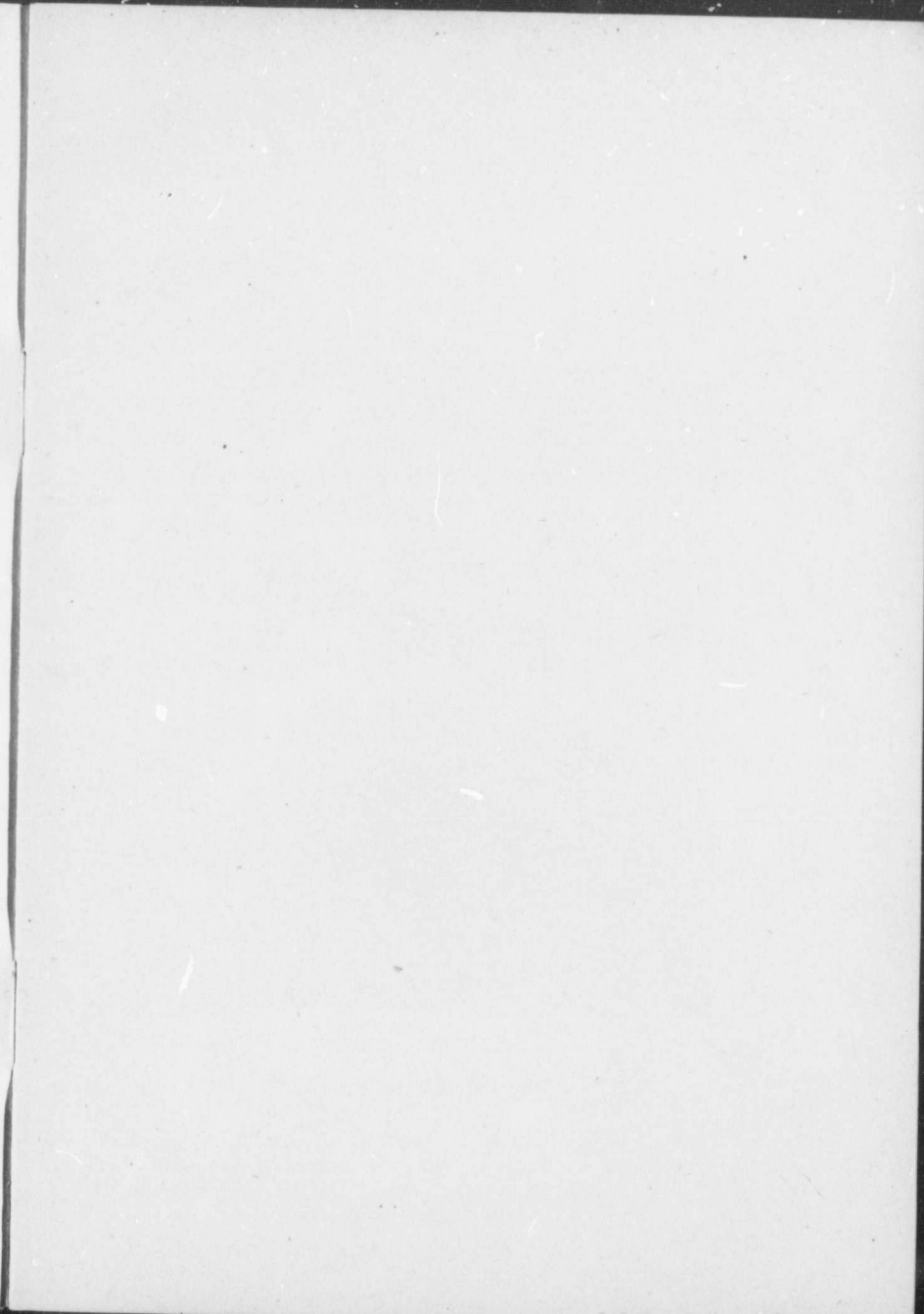
R. J. WICKSTEED,

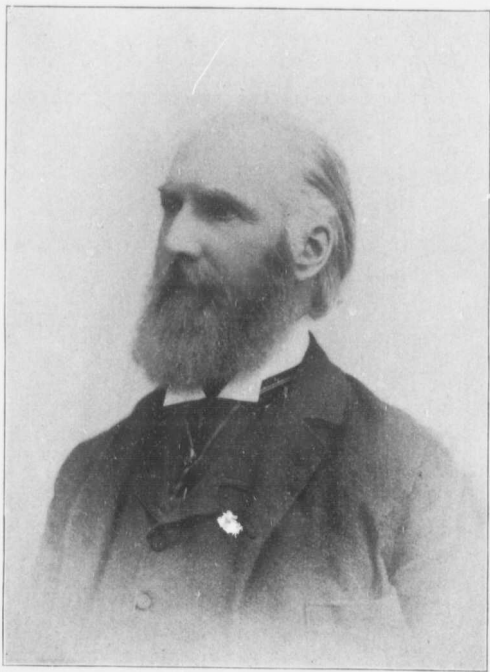
OTTAWA, - CANADA.

---

OTTAWA:  
E. J. REYNOLDS, PRINTER,  
1902.







RICHARD JOHN WICKSTEED.



QUALITIES AND CHARACTER  
OF  
RICHARD JOHN WICKSTEED.

Holds the Diplomas of LL.D.; B.A. (with First Rank Honours in Classics); and B.C.L., of McGill University, Montreal, Canada.

Advocate and Attorney at the Bar of the Province of Quebec; and Barrister and Solicitor at the Bar of the Province of Ontario; Commissioner for taking Affidavits at Ottawa, for the Provinces of Nova Scotia, New Brunswick, Quebec, Ontario, Manitoba and the North West Territories.

Captain, in the Garrison Artillery of the Active Militia of Canada; retired retaining rank. A graduate of the Military School, and of the School of Gunnery, of Canada. Fenian Raid medal and two clasps.

Succeeded to his Father as "Le Seigneur de Champlain," Province of Quebec, in the year 1898.

Presented at the Court of St. James, in 1899, by His Grace the Duke of Argyll.

Family Motto: "*Nimium ne crede colori.*"

Past-President of "Bowood" Lodge of the Order of the Sons of England in Canada: a Past Member of St.

George's Society of Montreal; Member of the St. George's Society of Ottawa, Canada; Associate Member of the Society of St. George, England; Grand Master of the League of the Rose, Canada; and Member of the British Empire League in Canada.

[For biography to year 1886 consult "*Representative Canadians*," (Vol. 1, page 698) by G. M. Rose, Toronto.]

*Address* :—Victoria Chambers, No. 140 Wellington Street, Ottawa, Canada.

The following scientific and anatomical character readings from the head and face of Mr. Wicksteed, by distinguished Professionals in England and America, will doubtless prove interesting both to those who know him personally, and to those who have but heard of him: the former will be able to substantiate or correct their own judgments or opinions, by the means afforded by these almost exact sciences, Phrenology and Physiognomy; while the latter class will be able, it is hoped, to increase their respect or modify or remove their prejudices, by reading these coldly scientific and unbiassed certificates of character and disposition.

Phrenological examination by James Moodie, of Chesterville, Ontario, taken in 1890: and certified correct by Professor W. G. Alexander, of the United States, in 1895, viz :—

[Sizes of organs :—Very large; large; full; average; moderate; small.]

“Temperament: Vital; large. Mental; large. Motive; full. Size of brain; large. Organic quality; large. Philoprogenitiveness; full. Amativeness; full. Adhesiveness; full. Concentrativeness; moderate.

Your temperament indicates strong vital organs, a disposition to long life. Active, restless mind, rather deficient in muscular fibre, and somewhat easily fatigued. Your domestic propensities are not strong, and your impulsion towards the opposite sex is from a desire of social and intellectual companionship. You are strong in your friendship. You are not cruel or vindictive; but easily roused to oppose what you think wrong; and ready to fight moral evils—combative in that direction. You are not secretive in your schemes; and open in your plans of attack. You are not an epicure in food, but particular as to quality. Firm in your opinions, especially in matters of principle—and yield only where your own lack of self-esteem, and your respect for those you deem superior, would force you to yield. Loyal to the constituted authority, parental or political. Intelligently susceptible to spiritual impressions and supernatural agencies. Have a decidedly religious bias. Are benevolent and strongly susceptible to appeals for sympathy. Not imitative but certainly imaginative. Have a good memory of events: a strong memory of words and places. Not a draftsman, though an admirer of art. Decidedly literary and scientific in your tastes. You lack confidence in your own powers, and underestimate your ability to influence others. Should be an easy, graceful and instructive speaker with practice; but lack force to drive your arguments home and overpower opposition. Are methodical, orderly, finicky. Not good at figures, but excellent in the higher mathematics. Not especially musical, but appreciate music and art. Not cautious in expression and action under excitement, and are apt to get into hot water. Of a buoyant and hopeful disposition.”

1 Examination of head and summary of character of



R. J. Wicksteed, by Professor W. G. Alexander, Phrenologist, &c., at Grant's Hall, Ottawa, on the 9th January, 1895:—

“Large brain capacity ( $22\frac{3}{4}$ .) Good quality of brain. Perception large. Mechanical faculties prominent. Mathematical powers great. Reverence, veneration and religious feeling, very strong. Guided in action entirely by conscience, or sense of what is right. When once decided that course is right, will follow it out regardless of opinion of others. Will choose financial loss with honour, if alternative is gain or profit with dishonour. Vitality is excessive,—will live far beyond the average life or man. Will survive what would crush out an ordinary individual. Caution too large, interfering with action.” (W. G. A.)

Private examination by Professor W. G. Alexander, at Russell House, Ottawa, on 18th, January, 1895:—

“Organic quality; full to large. Health; large to very large. Vital temperament; large to very large. Breathing power; large to very large. Circulatory power; large. Digestive power; large. Motive temperament; large. Mental temperament; large. Activity; large. Excitability; large. Size of brain; large ( $22\frac{3}{4}$ .) Amativeness; full to large. Conjugality; large. Parental love; large. Friendship; large. Inhabitiveness; large. Continuity; average to full. Vitativeness; large to very large. Combativeness; large. Destructiveness; full. Alimentiveness; full. Acquisitiveness; full. Secretiveness; full. Cautiousness; very large. Approbativeness; large. Self-esteem; full to large. Firmness; large. Conscientiousness; large to very large. Hope; average to large. Spirituality; full. Veneration; large. Benevolence; very large. Constructiveness; large. Ideality;

large. Sublimity; full to large. Imitation; full. Mirthfulness; large. Individuality; very large. Form; very large. Size; very large. Weight; large. Color; large. Order; large. Calculation; large. Locality; large. Eventuality; full. Time; large. Tune; full. Language; full. Causality; full. Comparison; large. Human nature; large. Agreeableness; full.

Business adaptation:—Accountant. Correspondent. Editor. Lawyer. Linguist. Teacher. Engineer. Geologist. Naturalist. Surveyor.

Constitution and mental qualities of wife:—

Vital temperament; strong. Motive temperament; strong. Mental temperament; strong. General build; medium. Size of head; medium. Weight; medium to heavy. Full and plump; medium to decidedly. Complexion; medium to dark brunette. Hair; medium. Eyes; dark. Social and domestic; strong. Energy of character; medium. Self-reliance; medium. Prudence and policy; medium. Regard for praise and Public opinion; strong. Economy and love of property; strong. Cheerfulness and Self-Control; strong. Ingenuity, skill and taste; medium to strong. Practical talent; strong. Reasoning and planning talent; medium to strong. Conversational power; medium. Moral and religious; very strong.”

Character from the face, by Florence Bartle Frere, 16 June, 1899:—

“Your forehead denotes large veneration for the sacred or old age. Are very fond of anything weaker than self—children or animals. A reserved nature. Average energetic mind. Are keenly observant, and have a memory for events, locality,—and large concentration. Cautious and independent. Nose shows you are sensitive

and discreet. May be coaxed, never driven. Can turn obstinate, cynical. Must be convinced by facts. A critic for literary composition. Pride. Self-control. Hope. Calculation. Firmness. Practical common sense. Are meant to be master. Self-appreciation. Logical capacity."

Phreno-Physiognomy :—Character from the face, by Professor Annie I. Oppenheim, B.P.A., London, England, 1899 :—

"Fond of travel and good at locality. Executive, Authoritative, and like to take the lead. Critical. Look a-head, and want to see things in advance. A lover of justice, and punctilious over detail. Sensitive and irritable over small matters. Hopeful. Reserved when with strangers. Have a keen sense of humour. Very independent. An admirer of the beautiful. Sympathetic. Not much veneration. Artistic. Very observant."

Phrenological Chart of character by Stackpool E.

O'Dell, London, England, 25th April, 1899 :—

[There are six degrees in size of the organs, No. 1 is the smallest and weakest; No. 6 is the largest and strongest.]

"Amativeness; 3½ degrees. Conjugality; 5 degrees. Philoprogenitiveness; 5 degrees. Friendship; 4½ degrees. Inhabitiveness; 5 degrees. Concentrativeness; 4 degrees. Vitativeness; 4½ degrees. Combativeness; 3½ degrees. Destructiveness; 4 degrees. Alimentiveness; 4 degrees. Acquisitiveness; 4 degrees. Secretiveness; 4 degrees. Cautiousness; 4½ degrees. Approbativeness; 5 degrees. Self-esteem; 4 degrees. Firmness; 5 degrees. Conscientiousness; 4 degrees. Hope; 4 degrees. Spirituality; 4 degrees. Veneration; 4½ degrees. Benevolence; 5 degrees. Constructiveness; 4 degrees. Ideality; 5 degrees. Sublimity;

4½ degrees. Imitation; 3½ degrees. Mirthfulness; 3½ degrees. Individuality; 5 degrees. Form; 4½ degrees. Size; 5 degrees. Weight; 5 degrees. Colour; 5 degrees. Order; 4 degrees. Calculation; 4½ degrees. Locality; 4½ degrees. Eventuality; 4 degrees. Time; 4 degrees. Tune; 3½ degrees. Language; 4½ degrees. Causality; 5 degrees. Comparison; 5 degrees. Human nature; 5 degrees. Agreeableness; 4 degrees. Size of brain; 4½ degrees. Organic quality; 5 degrees. Organic activity; 5 degrees. Mental temperament; 5 degrees. Vital temperament; 4 degrees. Motive temperament; 5 degrees. N. B.—Cultivate, Acquisitiveness and Hope.

“By cultivating the organs marked (Acquisitiveness and Hope) we have confidence in saying that you are suited mentally and physically, for: Scientific pursuits. Medicine. Biological and other research. Invention. Also speaking talent. Could engage at Law. Practical abilities for acquiring knowledge and applying it. Much above the average.”

Phrenological Chart by Professor W. Cross, London, England, 2nd August, 1901:—

“Organic quality; large. Health; large. Digestion; full. Circulation; large. Activity; full. Excitability; full. Size of brain; large (22¾.) Amativeness; large. Coujuality; full. Parental love; very large. Friendship; full. Inhabitiveness; very large. Continuity; full. Vitativeness; full. Combativeness; full. Destructiveness; full. Alimentiveness; moderate. Acquisitiveness; full. Secretiveness; full. Caution; very large. Approbativeness; large. Self-esteem; large. Firmness; very large. Conscientiousness; large. Hope; moderate. Spirituality; large. Veneration large Ben-

evolence ; large. Constructiveness ; large. Ideality ; full. Sublimity ; very large. Imitation ; full. Mirth ; full. Individuality ; large. Form ; very large. Size ; very large. Weight ; very large. Colour ; large. Order ; large. Calculation ; large. Locality ; very large. Eventuality ; full. Time ; large. Tune ; full. Language ; full. Causality ; very large. Comparison ; very large. Human nature ; very large. Agreeableness ; full.

N. B. Cultivate :—Alimentiveness. Hope. Digestion.

Restrain :—Caution. Self-esteem. Firmness. Comparison. Human nature.

Mr. Wicksteed is not only a preacher but a practiser of the text: "A healthy mind in a healthy body." He is by no means contemptible at athletic sports and pastimes, such as: running, dancing, calisthenics, swimming, skating, fencing, boxing, singlestick, rifle-shooting, horse riding and driving, canoeing, rowing, yachting and steam yachting.

He is an unrelenting foe of alcohol and tobacco.

What he finds good for himself,—mind and body, — he, in a generous spirit, wishes to furnish to others ; he is unremitting in his endeavours to promote the cause of pure and wholesome physical education and culture.

The following testimonial from the Principal, and Physical Instructor of McGill University, Montreal, Canada, will give assurance that the subject of this sketch obeys, in this direction at least, the Golden Rule of Christianity :

"For upwards of fifteen years, Dr. Wicksteed has presented to this University medals for the encouragement of physical education, and it is a pleasure to certify

that these medals have been of great service in stimulating interest, among University circles, in this important department of College life and work.

"This university is under great obligations to Dr. Wicksteed for his continuous and unremitting exertions in behalf of the physical welfare of its students."

W. PETERSON, M.A., LL.D.,  
Principal and Vice-Chancellor.

R. TAIT MCKENZIE,  
Medical Examiner and Instructor  
in Physical Culture.

MCGILL UNIVERSITY,  
MONTREAL, 16th October, 1900

This article from its Phrenological determinations is mainly concerned with what Mr. Wicksteed might have made of himself, or what Nature intended him to have been. How far he has acted up to his calling, must be enquired of impartial or loving judges. He says that he does his best to make the fundamental maxims of the Roman Civil Law his own, namely: "To live honestly; to injure no one; to render unto every man his own."

[From the Sons of England and St. George's Societies Directory, 1902.]