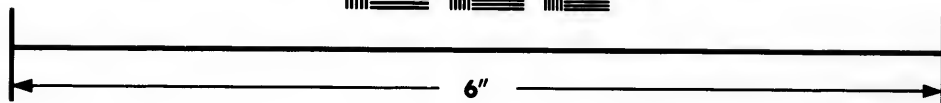
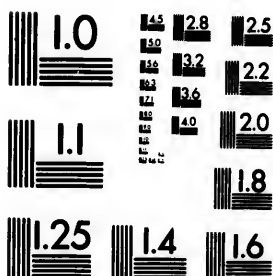


**IMAGE EVALUATION
TEST TARGET (MT-3)**



**Photographic
Sciences
Corporation**

23 WEST MAIN STREET
WEBSTER, N.Y. 14580
(716) 872-4503

**CIHM/ICMH
Microfiche
Series.**

**CIHM/ICMH
Collection de
microfiches.**



Canadian Institute for Historical Microreproductions / Institut canadien de microreproductions historiques

© 1983

Technical and Bibliographic Notes/Notes techniques et bibliographiques

The Institute has attempted to obtain the best original copy available for filming. Features of this copy which may be bibliographically unique, which may alter any of the images in the reproduction, or which may significantly change the usual method of filming, are checked below.

L'Institut a microfilmé le meilleur exemplaire qu'il lui a été possible de se procurer. Les détails de cet exemplaire qui sont peut-être uniques du point de vue bibliographique, qui peuvent modifier une image reproduite, ou qui peuvent exiger une modification dans la méthode normale de filmage sont indiqués ci-dessous.

- Coloured covers/
Couverture de couleur
- Covers damaged/
Couverture endommagée
- Covers restored and/or laminated/
Couverture restaurée et/ou pelliculée
- Cover title missing/
Le titre de couverture manque
- Coloured maps/
Cartes géographiques en couleur
- Coloured ink (i.e. other than blue or black)/
Encre de couleur (i.e. autre que bleue ou noire)
- Coloured plates and/or illustrations/
Planches et/ou illustrations en couleur
- Bound with other material/
Relié avec d'autres documents
- Tight binding may cause shadows or distortion
along interior margin/
La reliure serrée peut causer de l'ombre ou de la
distortion le long de la marge intérieure
- Blank leaves added during restoration may
appear within the text. Whenever possible, these
have been omitted from filming/
Il se peut que certaines pages blanches ajoutées
lors d'une restauration apparaissent dans le texte,
mais, lorsque cela était possible, ces pages n'ont
pas été filmées.
- Additional comments:/
Commentaires supplémentaires:

- Coloured pages/
Pages de couleur
- Pages damaged/
Pages endommagées
- Pages restored and/or laminated/
Pages restaurées et/ou pelliculées
- Pages discoloured, stained or foxed/
Pages décolorées, tachetées ou piquées
- Pages detached/
Pages détachées
- Showthrough/
Transparence
- Quality of print varies/
Qualité inégale de l'impression
- Includes supplementary material/
Comprend du matériel supplémentaire
- Only edition available/
Seule édition disponible
- Pages wholly or partially obscured by errata
slips, tissues, etc., have been refilmed to
ensure the best possible image/
Les pages totalement ou partiellement
obscurcies par un feuillet d'errata, une pelure,
etc., ont été filmées à nouveau de façon à
obtenir la meilleure image possible.

This item is filmed at the reduction ratio checked below/
Ce document est filmé au taux de réduction indiqué ci-dessous.

10X	12X	14X	16X	18X	20X	22X	24X	26X	28X	30X	32X
			✓								

The to th
The poss
of th
filmi
Orig
begi
the li
sion,
othe
first
sion,
or ill
The M
shall
TINU
whic
Maps
differ
entire
begin
right
requi
meth

The copy filmed here has been reproduced thanks to the generosity of:

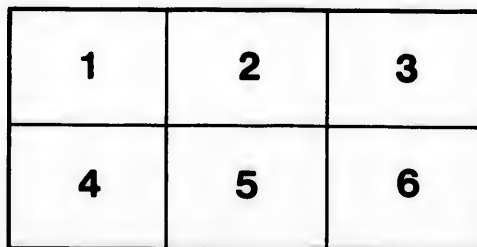
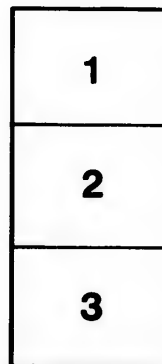
Library of the Public
Archives of Canada

The images appearing here are the best quality possible considering the condition and legibility of the original copy and in keeping with the filming contract specifications.

Original copies in printed paper covers are filmed beginning with the front cover and ending on the last page with a printed or illustrated impression, or the back cover when appropriate. All other original copies are filmed beginning on the first page with a printed or illustrated impression, and ending on the last page with a printed or illustrated impression.

The last recorded frame on each microfiche shall contain the symbol → (meaning "CONTINUED"), or the symbol ▽ (meaning "END"), whichever applies.

Maps, plates, charts, etc., may be filmed at different reduction ratios. Those too large to be entirely included in one exposure are filmed beginning in the upper left hand corner, left to right and top to bottom, as many frames as required. The following diagrams illustrate the method:



L'exemplaire filmé fut reproduit grâce à la générosité de:

La bibliothèque des Archives
publiques du Canada

Les images suivantes ont été reproduites avec le plus grand soin, compte tenu de la condition et de la netteté de l'exemplaire filmé, et en conformité avec les conditions du contrat de filmage.

Les exemplaires originaux dont la couverture en papier est imprimée sont filmés en commençant par le premier plat et en terminant soit par la dernière page qui comporte une empreinte d'impression ou d'illustration, soit par le second plat, selon le cas. Tous les autres exemplaires originaux sont filmés en commençant par la première page qui comporte une empreinte d'impression ou d'illustration et en terminant par la dernière page qui comporte une telle empreinte.

Un des symboles suivants apparaîtra sur la dernière image de chaque microfiche, selon le cas: le symbole → signifie "A SUIVRE", le symbole ▽ signifie "FIN".

Les cartes, planches, tableaux, etc., peuvent être filmés à des taux de réduction différents. Lorsque le document est trop grand pour être reproduit en un seul cliché, il est filmé à partir de l'angle supérieur gauche, de gauche à droite, et de haut en bas, en prenant le nombre d'images nécessaire. Les diagrammes suivants illustrent la méthode.

aire
détails
ues du
modifier
ger une
filmage

ées

re

y errata
ed to

nt
ne pelure,
çon à



32X

John Balmer his of mac k

THE
NOVA-SCOTIA CALENDER,
OR AN
ALMANACK,

For the Year of the CHRISTIAN ÆRA, 1799.

And from the Creation of the World, according to Chronology,
5748; being the Third after Bissextile or Leap Year:

And in the Thirty Ninth Year of the Reign of His Majesty KING
GEORGE the Third, containing 365 Days:

WHEREIN IS CONTAINED,

The ECLIPSES of the LUMINARIES.—SUN and MOON'S
RISING and SETTING.—MOON'S PLACE and AGE.—
TIME of HIGH WATER at HALIFAX.—MOON'S APOGEE
and PERIGEE.—EQUATION of TIME.—FEASTS and FASTS
of the CHURCH.—SITTINGS of the several COURTS; and
SESSIONS in this PROVINCE, &c. &c. &c.

Calculated for the Meridian of HALIFAX in NOVA-SCOTIA,
Latitude $44^{\circ} 44'$ North, and 4 hours 14 minutes West Longitude
from LONDON, but will serve without sensible Error for any
part of this and the neighbouring Provinces.

By METONICUS.

“ A broad and ample Road, whose dust is gold
“ And Pavement Stars, as Stars to thee appear,
“ Seen in the Galazy, that Milky way,
“ Which Nightly, as a circling Zone thou Seest
“ Powder'd with Stars”

MILTON.

HALIFAX: Printed and Sold by A. HENRY, at his Printing-
Office, in Sackville-Street, Corner of Grafton-Street.

DIRECTIONS to FARMERS and GARDENERS.

AS some Springs are much earlier than others, the following directions ought not to be too literally adhered to in point of time ; but may rather serve to point out the order in which things may succeed each other ; but as to the precise time of beginning, the judgment of the Planter must be in some measure regulated by the appearance of the Spring.

The last week in April, sow early pease, cabbage, parsnips, parley, onions, turnips, radishes, lettuce and mustard.

However, those mentioned for the last week in April, may be put whenever the snow is gone, the frost out of the ground, and the soil so dry as not to be muddy, and the others succeed in their order.

The first week in May, sow oats, wheat and rye ; also some early English beans, (and the main crop by the 20th or 21st), spinage and orice ; and by the 20th of May a few hills of cucumbers, and a few early bush beans.

The middle of May, sow hemp and flax ; and any time between this and the 10th of June will do for potatoes ; such as are planted about the first of June, are frequently the largest, but the earliest planted are commonly the best to eat, being drier, in consequence of their being more thoroughly ripe.

The first week in June, plant all sorts of kidney beans ; also cucumbers, squashes and pumpkins.

The 20th of June, sow buck wheat ; this is also a good time to sow in herd grass, clover, or any sort of grass seed, which is thought to succeed better if sowed in now with buck wheat, than in the spring with oats. Herds-grass that is sowed the latter part of June or through the whole of July, instead of running up, heading out, and ripening as that does which is earlier sown, spends the summer in spreading into a large bunch, and rooting firmly, by which it not only bears the severity of the winter, but sends up from each seed many more stalks the ensuing summer. The farmer should be careful to sow his clover, if possible, before the end of July : for it is very apt to be killed with the winter, if not well rooted, and it often happens that crops which come up well, late in the fall, are wholly killed, so that a single plant cannot be found the next Summer.—The first week in July sow field turnips—the early Dutch may be sown as late as the 25th.—The 20th is a good time to sow winter wheat and rye, as by being sowed early it will be better rooted to stand the severity of the winter, and be more likely to escape a blast by coming in earlier next summer. In the fore part of September, corn salad, which then may be cut any time in the winter or spring when the snow is off.

Dominica
Golden N
Epaft
Cycle of
Roman I
Sundays a
Septuages
A 4th Wed

⊙ T
☾ T
♀ M

♂ Conju
tuate
♂ Oppos
in L
Sign
□ Quar
thre
from
△ Trine,

γ Aries,
♉ Tauru
♊ Gemi
♌ Cance
♍ Leo,
♎ Virgo,

Will be
15th C
Mornin
the Year

VULGAR NOTES for the YEAR, 1799.

Dominical, or Sunday Letter	F.	Full Moon bef. East.	Mar. 21st
Golden Number	14	Easter Sunday,	March 24th.
Epaēt	-	Rogation Sunday,	April 28th.
Cycle of the Sun	16	Ascension Day,	May 2d.
Roman Indiction,	-	Whituesday,	May 12th.
Sundays after Epiphany	2	Trinity Sunday,	May 19th.
Septuagesima Sunday, Jan. 20th.	1	Sundays after Trinity,	27
Ath Wednesday, February 6th.		Advent Sunday,	December 1st

The CHARACTER of the PLANETS, &c.

☉ The Sun	♀ Venus	♃ Jupiter
☾ The Moon,	♁ The Earth	♄ Saturn
☿ Mercury	♂ Mars	♁ Georgian.

ASPECTS.

♁ Conjunction, or Planets situate in the same Longitude.	Signs, or 120° distant from each other.
♁ Opposition, or Planets situate in Longitudes differing six Signs from each other.	* Sextile, is when they are 60° distant from each other.
♁ Quartile, is when they are three Signs, or 90° distant from each other.	fs. Semisextile, is when they are 30° distant.
♁ Trine, is when they are four	Vc. Quincunx, is when they are five Signs, or 150° distant.

The SIGNS of the ZODIAC.

♈ Aries, the Ram,	♎ Libra, the Balance,
♉ Taurus, the Bull,	♏ Scorpio, the Scorpion,
♊ Gemini, the Twins,	♐ Sagittarius, the Archer,
♋ Cancer the Crab,	♑ Capricorn, the Goat,
♌ Leo, the Lion,	♒ Aquarius, the Water-bearer.
♍ Virgo, the Virgin,	♓ Pisces, the Fishes.

♀ VENUS.

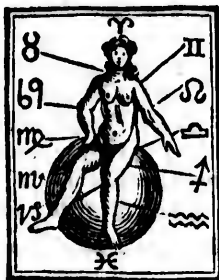
Will be Evening Star to the 15th October, and thence Morning Star to the End of the Year.

♃ JUPITER.

Will be Evening Star to 29th May, thence Morning Star, to 17th Dec. and thence Evening Star to the End of the Year.

The NAMES and CHARACTERS of the TWELVE SIGNS.
ARIES.

TAURUS
CANCER
VIRGO
SCORPIO
CAPRICORN



PISCES.

GEMINI
LEO,
LIBRA
SAGGITARIUS
AQUARIUS

ECLIPSES for the YEAR, 1799.

THERE will be Two Eclipses this Year, both of the Sun, and both Invisible at Halifax, in the following Order, viz.

MAY 4th. SUN Eclipsed, invisible.

♁ at 8h. afternoon, in Long. 1f. 14°. 27'.

♃'s Lat. 7' south.

☉ will be centrally Eclipsed on the Meridian at 7h. 55½', in Long. 177°. 37'. East at Lat. 8°. North.

OCTOBER 28th. SUN Eclipsed invisible.

♁ at 1h. 21¼ afternoon, in Long. 7f. 5°.

19'. ♃'s Lat. 7¾ N.

☉ will be centrally Eclipsed on the Meridian at 1h. 17'. in Long. 82¼ West, and Lat. 5°. ½ South.

Beside the foregoing Eclipses of the Sun in this Year, there will be a Transit of the Planet MERCURY over the Sun's Disk, on the 7th May, ♂ 7h. 36m. morning, ♃'s Lat. 5'. 20". South, Visible, if the Weather be clear, as follows.

	h.	'.	".	mo.	♃'s Lat.	'	"	
Beginning of the Transit	3	34	30		2	20		} South.
Middle	-	-	7	20	7½	5	2½	
End	-	-	11	5	45	7	45	
Nearest distance of Centers			5	5				
Duration of the Transit	7	31	15					

I. JA

New
Fire
Full
Last

☉ en

M	w	D	D	A	A	S	p
1	3						Circ
2	4						Cl.
3	5						A
4	6						on
5	7						
6	F						Epi
7							Cl.
8	3						Luc
9	4						
10	5						2L S
11	6						Inf.
12	7						DA
13	F						1st S
14	2						S
15	3						
16	4						*s f
17	5						Cl. f
18	6						Q. C
19	7						
20	F						Sept
21	2						Louis
22	3						Vinc
23	4						(♃ S
24	5						Snow
25	6						Conv
26	7						Pe
27	F						Sexag
28	2						(177
29	3						
30	4						K. Ch
31	5						Cl. fa

IGNS.

I. JANUARY, hath XXXI Days. 1799.

New Moon, Sunday, 6th Day, at Midnight.
 First Quarter, Sunday 13th Day at 11h. 44m. Night.
 Full Moon, Monday 21st Day, at 1h. 27m. aftern.
 Last Quarter, Monday 28th Day, at 6h. 36m. morn.
 ☉ enters ♍ Saturday 19th Day, at 6h. 54m. afternoon.

of the
lowing

o. 27'

Meri-
o. 37'

7f. 5°.

ne Me-
West.

r, there
er the
s, 8's
clear,

South.

M	W	Remarkable Days,	r. ☉ s.	☾	☾ r. ☾ s.	H. W.
D	D	Aspects, Weather, &c. &c.	H. M. H.	Place.	A. H. M.	H. M.
1	3	Circumcision. ♀ Station.	7 39 5	14 M 38	25 2 40	3 10
2	4	Cl. fast 4m. 36f.	7 39 5	28 31 26	3 50	4 12
3	5	<i>A heavy storm of Snow</i>	7 38 5	12 † 16 27	4 59	4 56
4	6	<i>or rain about this time.</i>	7 37 5	25 53 28	6 2	5 44
5	7	<i>then clears off cold,</i>	7 36 5	9 ♄ 18 29	7 3	6 24
6	F	Epiphany. D. len. 8. 48.	7 36 5	22. 31	☉ sets.	7 30
7	2	Cl. fast 6m. 51f. Mode.	7 35 5	5 ☿ 29	1 5 44	8 20
8	3	Lucian. (Tides.	7 34 5	18 11	2 6 43	9 10
9	4		7 34 5	0 ♃ 38	3 7 46	10 0
10	5	♃ Stationary.	7 33 5	12 50	4 8 54	10 50
11	6	Inf. ☉ ☽ 3h. 31m. mo.	7 32 5	24 50	5 10 5	11 40
12	7	♃ Apog. Cl. fast 8m. 53f.	7 31 5	6 ♃ 43	6 11 7	12 30
13	F	1st Sun. aft. Ep. D. l. 9. o.	7 30 5	18 33	☾ morn.	1 20
14	2	<i>Snow or rain about</i>	7 29 5	0 ☽ 24	8 0 22	2 10
15	3	<i>these days.</i>	7 28 5	12 22	9 1 34	3 0
16	4	7*s so. 7h. 41m. aft.	7 27 5	24 32	10 2 52	3 50
17	5	Cl. fast 10m. 39f.	7 26 5	7 ♀ 11	4 3	4 40
18	6	Q. Charl. birth day kept.	7 25 5	19 50	12 5 18	5 35
19	7	(Pisca.	7 24 5	3 ☽ 4	13 6 22	6 30
20	F	Septuag. Su. D. l. 9. 14. m.	7 23 5	16 43	14 7 26	7 25
21	2	Louis XVI. of France be-	7 22 5	0 ♄ 45	☉ rises.	3 10
22	3	Vincent. (headed 1793.	7 21 5	15 5	16 5 37	9 1
23	4	♃ Sta. Cl. fast 12m. 6f.	7 20 5	29 38	17 6 52	9 52
24	5	<i>Snow or rain, about this</i>	7 19 5	14 ♄ 16	18 7 59	10 43
25	6	Conver. of St. Paul. time.	7 18 5	28 51	19 9 12	11 34
26	7	☾ Per. 7*s so. 5h. 55m. af.	7 17 5	13 ☽ 19	20 10 16	12 25
27	F	Sexag. Su. Pr. Aug. Fr. b.	7 16 5	27 35	21 11 21	1 25
28	2	(1773. D. len. 9h. 14m.	7 15 5	11 M 37	☾ morn.	2 16
29	3		7 14 5	25 26	23 0 30	3 6
30	4	K. Cha. I. Martyr. High	7 13 5	9 † 1	24 1 29	3 55
31	5	Cl. fast 13m. 54f. Winds.	7 12 5	22 25	25 2 30	4 46

II. FEBRUARY, hath XXVIII Days. 1799.

New Moon, Monday 4th Day, at 4h. om. afternoon.
 First Quarter, Tuesday 12th Day, at 8h. 30m. afternoon.
 Full Moon, Wednesday 20th Day, at oh. 49m. morning.
 Last Quarter, Tuesday 26th Day, at 4h. 8m. afternoon.

☉ enters ♋ Monday 18th Day, at 9h. 45m. forenoon.

M.	w.	Remarkable Days,	r. ☉ s.	☾'s	☾ r. ☾ s.	H. W.
D.	D.	Aspects, Weather, &c.	H. M. H.	Place.	A. H. M.	H. M.
1	6	7*s so. 6h. 31m. aftern.	7 11 5	5 ♄ 37	26 3 26	5 36
2	7	Purif. of B. V. Mary.	7 10 5	18 38	27 4 24	6 26
3	F	Quinquages. Sun. D. len.	7 9 5	1 ♃ 29	28 5 19	7 16
4	2	♄ gr. Elong. (9h. 42m.	7 8 5	14 9	☾ sets.	8 6
5	3	Agatha. Grove Tuesday.	7 7 5	26 37	1 5 50	8 52
6	4	Ash Wednesday. 7*s sf. 6.	7 6 5	8 ♁ 54	2 6 51	9 48
7	5	Cl. fast 14m. 33f. (10m. af.	7 5 5	21 0	3 7 59	10 34
8	6	<i>Changeable</i>	7 4 5	2 ♃ 57	4 9 3	11 20
9	7	☾ Apogee. <i>weather.</i>	7 2 5	14 48	5 10 9	12 6
10	F	1st Sun. in Lent. D. len.	7 1 5	26 35	6 11 23	12 52
11	2	7*s so. 5h. 50m. af. (9.58.	6 59 6	8 ☽ 24	7 morn.	1 38
12	3	♄ ☾ Cl. fast 14m. 37f.	6 57 6	20 19	☾ 1 20	2 24
13	4	<i>More snow or rain.</i>	6 55 6	2 ♀ 27	9 2 32	3 10
14	5	Valentine.	6 53 6	14 52	10 3 40	3 56
15	6	<i>Piercing cold.</i>	6 51 6	27 39	11 4 41	4 42
16	7	7*s so. 5h. 30m. aftern.	6 49 6	10 ♄ 54	12 5 50	5 28
17	F	2d Sun. in Lent. D. len. 10.	6 48 6	24 37	13 6 40	6 14
18	2	Cl. fast 14m. 16f. (24m.	6 47 6	8 ♀ 48	14 7 32	7 0
19	3	<i>Pleasant weather for the</i>	6 45 6	24 24	15 8 20	7 45
20	4	<i>season. Pretty full Tides.</i>	6 43 6	8 ♃ 17	☾ rises.	8 20
21	5	<i>There will be abundance</i>	6 41 6	23 19	17 5 40	9 11
22	6	☾ Perigee. <i>off snow about</i>	6 39 6	8 ♄ 20	18 6 50	10 2
23	7	Cl. f. 13m. 39f. <i>these days.</i>	6 38 6	23 11	19 7 54	10 53
24	F	3d Su. in Le. St. Mat. Pr.	6 36 6	7 ♃ 45	20 9 1	11 44
25	2	(Ad. Fre. b. 1774. D. l. 10h.	6 35 6	21 59	21 10 5	12 35
26	3	7*s so. 4h. 50m. af. (48m.	6 34 6	5 ♄ 52	☾ 11 15	1 26
27	4	<i>The Aspects threaten rain.</i>	6 33 6	19 25	23 morn.	2 17
28	5	Cl. fast 12m. 48f.	6 32 6	2 ♄ 39	24 1 10	3 8

III.

N
F
F
L
Oen

M	w	D	A
1	6	S	
2	7		
3	F	4t	
4	2	Cl	
5	3	Fa	
6	4	7*	
7	5	Pe	
8	6	Cl	
9	7	Cl	
10	F	5th	
11	2	Gr	
12	3	♄	
13	4		
14	5	Cl.	
15	6	P.	
16	7	7*s	
17	F	Pal	
18	2	Ed.	
19	3	Cl.	
20	4		
21	5	Ben	
22	6	Go	
23	7		
24	F	East	
25	2	East	
26	3	East	
27	4	7*s	
28	5	Look	
29	6	Cl. f	
30	7		
31	F	1st. S	

New Moon, Wednesday 6th Day, at 9h. 20m. foren.
 First Quarter, Thursday 14th Day, at 2h. 8m. aft.
 Full Moon, Turfday 21st Day, at 10h. 39m. fore.
 Last Quarter, Thursday 28th Day, at 3h. 20m. morn.

Centers of Wednesday 20th Day, at 10h. 3m. forenoon.

M	W	Remarkable Days,	r.	⊙	s.	☾	(r.)	s.	H.W.
D	D	Aspects, Weather, &c.	H.	M.	H.	Place.	A.	H. M.	H. M.
1	6	St. David. 7*s fet 1h. mo.	6	31	6	15 ♄ 37	25	2 28	4 0
2	7		6	30	6	28 21	26	3 16	4 50
3	F	4th Sun. in Lent. D.l. 11.	6	29	6	10 ☁ 53	27	4 8	5 40
4	2	Cl. fast 11m. 57f. (2m.	6	28	6	23 16	28	5 49	6 30
5	3	<i>Falling weather about these</i>	6	27	6	5 ☿ 29	29	6 22	7 20
6	4	7*s fet oh. 42m. m. days.	6	26	6	17 34	☾	fets.	8 10
7	5	Perpetua. ♂♂♂	6	24	6	29 32	1	6 30	8 58
8	6	☾ Apogee. <i>Perhaps rain.</i>	6	22	6	11 ♀ 24	2	7 38	9 46
9	7	Cl. fast 10m. 44f.	6	20	6	23 12	3	8 50	10 34
10	F	5th Sun. in L. D. len. 11h.	6	18	6	4 ♂ 59	4	10 8	11 22
11	2	Gregory M. (24m.	6	16	6	16 48	5	11 16	12 10
12	3	♂♂♂ 3h. 26m. morn.	6	15	6	28 44	6	morn.	12 58
13	4	<i>Blustering weather and</i>	6	13	6	10 ♀ 50	7	0 30	1 46
14	5	Cl. fast 9m. 22f. <i>some rain.</i>	6	11	6	23 12	☾	1 37	2 34
15	6	<i>Pleasant for the season.</i>	6	10	6	5 ☽ 55	9	2 37	3 22
16	7	7*s f. oh. 4m. morn.	6	8	6	19 3	10	3 34	4 10
17	F	Palm Sun. St. Patr. D. le.	6	6	6	2 ♀ 40	11	4 27	4 58
18	2	Ed. K. of W. Sax. (11. 48.	6	4	6	16 47	12	5 21	5 46
19	3	Cl. fast 7m. 54f.	6	2	6	1 ♀ 21	13	5 51	6 34
20	4	Pretty high Tides.	6	0	6	16 13	14	6 21	7 22
21	5	Benedict ☾ Per. ♀ Statio.	5	58	7	1 ☽ 30	☾	rises.	8 10
22	6	Good Friday. 7*s f. 11h.	5	57	7	16 45	16	7 10	8 59
23	7	(40m. aftern.	5	56	7	1 ♀ 54	17	8 14	9 48
24	F	Easter Sun. D. len. 12. 12.	5	54	7	16 47	18	9 19	10 37
25	2	Easter Mon. Annun. of V.	5	53	7	1 ♀ 18	19	10 23	11 26
26	3	East. Tuesday (MARY.	5	51	7	15 25	20	11 25	12 15
27	4	7*s fet. 11h. 26m. after.	5	49	7	29 6	21	morn.	1 4
28	5	<i>Look out for a storm, with</i>	5	47	7	12 ♄ 22	☾	1 16	1 53
29	6	Cl. f. 4m. 48f. (high winds.	5	46	7	25 18	23	2 2	2 42
30	7	(Low Sun.	5	45	7	7 ☁ 55	24	2 46	3 31
31	F	1st. Sun. aft. E. D.l. 12. 34.	5	43	7	20 18	25	3 30	4 20

IV. APRIL, hath XXX Days. 1799.

New Moon, Friday 5th Day, at 3h. 7m. morning.
 First Quarter, Saturday 13th Day, at 3h. 33m. morn.
 Full Moon, Friday 19th Day, at 7h. 26m. afternoon.
 Last Quarter, Friday 26th Day, at 4h. 16m. aftern.

☉ enters ♋ Friday 19th Day, at 10h. 42m. night.

M	w	Remarkable Days,	r.	☉	s.	☾'s	☾	r.	☾	s.	H. W.
D	D	Aspects, Weather, &c.	H.	M.	P.	Place.	A.	H.	M.	H. M.	H. M.
1	2	All Fools. Cl. f. 5m. 3f.	5	42	7	2 ♄	29	26	4	4	5 8
2	3	April showers bring forth	5	40	7	14	31	27	4	34	5 56
3	4	flowers plentifully.	5	38	7	26	27	28	5	3	6 46
4	5	St. Ambrose.	5	37	7	8 ♀	18	29	5	32	7 34
5	6	☾ Apo. Moderate Tides.	5	35	7	20	7	☾	fets.	8	20
6	7	*s fet 10h. 47m. af.	5	34	7	1 ♂	55	1	7	38	9 11
7	F	2d Sun. af. East. D. len.	5	32	7	13	44	2	8	56	10 2
8	2	☾ ☽ ♃ (12h. 56m.	5	30	7	25	38	3	10	11	10 53
9	3	☽ ♃ ♀ 9h. 55m. after.	5	28	7	7 ♀	38	4	11	26	11 44
10	4	(☾ ☽ ♃ 6h. 16m. morn.	5	27	7	19	49	5	morn.	12	35
11	5	*s fet 10h. 28m. af.	5	26	7	2 ☽	13	6	0	42	1 25
12	6	Frequent rains about	5	24	7	14	56	7	1	31	2 15
13	7	this time.	5	23	7	28	0	☾	2	20	3 6
14	F	3d Sun. af. East. D.l. 13h.	5	21	7	11 ♀	30	9	3	10	3 55
15	2	(18m.	5	19	7	25	25	10	4	0	4 45
16	3	*s fet 10h. af. Cl. fl. 18f.	5	17	7	9 ♄	48	11	4	40	5 35
17	4	Pleasant weather	5	16	7	24	33	12	5	30	6 25
18	5	for gardening.	5	15	7	9 ♃	36	13	6	20	7 15
19	6	Alp. ☾ Per. Pretty full	5	13	7	24	48	☾	rises.	8	5
20	7	Cl. fl. 1m. 14f. (Tides.	5	11	7	9 ♀	59	15	7	47	8 53
21	F	4th Sun. af. East. D. len.	5	10	7	23	0	16	8	53	9 41
22	2	*s f. 9h. 50m. a. 13. 40.	5	9	7	9 ♃	43	17	9	50	10 29
23	3	St. George. Cloudy dull	5	8	7	24	2	18	10	45	11 17
24	4	weather.	5	6	7	7 ♀	54	19	11	39	12 6
25	5	St. Mark. Pts. Mary born	5	5	7	21	20	20	morn.	12	53
26	6	♄ Sta. (1776.	5	3	7	4 ♃	21	☽	0	20	1 40
27	7	Vic. C. 1746.	5	2	7	17	0	22	1	11	2 27
28	F	5th S. af. East. Rog. Sun.	5	0	7	29	1	23	1	40	3 14
29	2	(D. len. 14h. om.	5	59	7	11 ♄	28	24	2	9	4 1
30	3	Cl. flow 3m.	5	58	7	23	25	25	2	42	4 48

M w
D D
1 4
2 5
3 6
4 7
5 F
6 2
7 3
8 4
9 5
10 6
11 7
12 F
13 2
14 3
15 4
16 5
17 6
18 7
19 F
20 2
21 3
22 4
23 5
24 6
25 7
26 F
27 2
28 3
29 4
30 5
31 6

1799.

V. MAY, hath XXXI Days. 1799.

New Moon, Saturday 4th Day, at 8h. om. Evening.
 First Quarter, Sunday 12th Day, at oh. 55m. aftern.
 Full Moon, Sunday 19th Day at 3h. 37m. morning.
 Last Quarter, Sunday 26th Day at 6h. 51m. morn.

☉ enters ♀ Monday 20th Day, 11 h. 11m. night.

orning.
 m. morn.
 ternoon.
 aftern.
 ght.

(s. H. W. M. H. M.)
4 5 8
34 5 56
3 6 46
32 7 34
ets. 8 20
38 9 11
56 10 2
11 10 53
26 11 44
orn. 12 35
42 1 25
31 2 15
20 3 5
10 3 55
0 4 45
40 5 35
30 6 25
20 7 15
ses. 8 5
47 8 53
53 9 41
50 10 29
45 11 17
39 12 6
rn. 12 53
20 1 40
11 2 27
40 3 14
9 4 1
42 4 48

M. D.	W. D.	Remarkable Days, Aspects, Weather, &c.	r. ☉ s. H. M. H.	☾'s Place.	☾ r. ☾ s. A. H. M.	H. W. H. M.
1	4	St. Philip and St. James.	4 57 8	5 ♀ 15	26 3 40	5 35
2	5	Ascension Day. (Apog.	4 56 8	17 3 27	4 30	6 22
3	6	Inv. of the Cross. Moderate	4 55 8	28 5 128	5 6	7 9
4	7	Cl. slow 3m. 28f. (Tides.	4 54 8	10 ♂ 42	☾ sets.	7 55
5	F	Sun. af. Afce. D. len. 14.	4 52 8	22 38	1 8 22	8 45
6	2	7*s fet 8h. 54m. af. (16m.	4 51 8	4 ♀ 40	2 9 25	9 35
7	3	♂ ☽ ♀ 7h. 20m. morn.	4 50 8	16 52	3 10 32	10 25
8	4	Pleasant showers about	4 49 8	29 14	4 11 33	11 15
9	5	Cl. sl. 3m. 50f. these days	4 48 8	11 ☽ 50	5 morn.	12 5
10	6	followed by heavy fog gs.	4 46 8	24 41	6 0 50	12 55
11	7	7*s fet 8h. 35m. aftern.	4 45 8	7 ♀ 49	7 1 20	1 45
12	F	Whit-Sun. D. len. 14. 32.	4 44 8	21 17	☽ 1 50	2 35
13	2	Whit-Monday.	4 42 8	5 ♀ 5 9	2 17 3	2 5
14	3	Whit-Tuef. St. Peters and	4 41 8	19 13	10 2 45	4 15
15	4	(Miquilon tak. by Gen.	4 40 8	3 ☽ 41	11 3 21	5 5
16	5	☾ Perigee. (Ogilvie 1793.	4 39 8	18 24	12 3 57	5 55
17	6		4 38 8	3 ♀ 18	13 4 24	6 45
18	7	Pretty full Tides.	4 37 8	18 15	14 4 50	7 35
19	F	Trinity Sunday. Q. Cha.	4 36 8	3 ♀ 8	☽ rise.	8 25
20	2	(b. 1744. D. len. 14. 48.	4 35 8	17 48	16 8 20	9 12
21	3	☽ Stationary.	4 34 8	2 ♀ 10	17 9 14	9 59
22	4	Prs. Eliz. born 1770.	4 33 8	16 18	18 10 8	10 46
23	5	More pleasant	4 32 8	29 40	19 11 2	11 33
24	6	showers.	4 31 8	12 ☽ 47	20 11 41	12 20
25	7	Cl. slow 3m. 28f.	4 30 8	25 30	21 morn.	1 7
26	F	1st Su. af. Trin. Aug. 1st	4 29 8	7 ♀ 54	☾ 0 52	1 54
27	2	(Abp. Cant. D. l. 15h. 2m.	4 28 8	20 123	1 22	2 41
28	3	♂ ☽ ♀ diff. Lat. 43'.	4 27 8	1 ♀ 57	24 14 2	3 28
29	4	K. Cha. II restored.	4 26 8	13 47	25 2 50	4 15
30	5	☾ Apo. ☽ ☽ 7h. 46. mo.	4 25 8	25 34	26 2 40	5 2
31	6	Cl. slow 2m. 45f.	4 25 8	7 ♂ 24	27 3 6	5 49

VI. JUNE, hath XXX Days. 1799.

New Moon, Monday 3d Day, at 10h. 51m. foren.
 First Quarter, Monday 10th Day, at 7h. 14m. even.
 Full Moon, Monday 17th Day, at 11h. 51m. foren.
 Last Quarter, Monday 24th Day, at 11h. om. night.

☉ enters ♄ Friday 21st Day, 7h. 49m. morning,

M	w	Remarkable Days,	r. ☉ s.	☾'s	☾ r. ☾ s.	H. W.
D	D	Aspects, Weather, &c.	H. M. H.	Place.	A. H. M.	II. M.
1	7	*s rise 2h. 40m. morn.	4 24 8	19 ☽ 20	28 3 28	6 36
2	F	2d Sun. af. Tr. D.le. 15h.	4 24 8	11 24	29 3 54	7 23
3	2	☽ Gr. Elong. (12m.	4 23 8	13 39	☾ sets.	8 10
4	3	K. Geo. III born 1738.	4 23 8	26 7	1 8 20	9 2
5	4	Pr. Ern. Aug. born 1771.	4 22 8	8 ☽ 47	2 9 16	9 54
6	5	(Boniface.	4 21 8	21 42	3 10 11	10 46
7	6	<i>Growing weather.</i>	4 20 8	4 ☽ 50	4 11 11	11 38
8	7	(D.len. 15h. 20m.	4 20 8	18 12	5 11 30	12 30
9	F	3d Sunday after Trinity.	4 20 8	21 47	6 11 59	1 22
10	2	Prs. Amelia b. Cl. fl. 1. 1f.	4 20 8	15 ☽ 36	☾ morn.	2 14
11	3	St. Barnabas. 7*s rise 2h.	4 20 8	29 38	8 1 0	3 6
12	4	(morn.	4 20 8	13 ☽ 51	9 1 30	3 58
13	5	☾ Perig. Middling Tides.	4 20 8	28 14	10 2 7	4 50
14	6	<i>Rain, with thunder.</i>	4 19 8	12 ☽ 45	11 2 39	5 42
15	7	Cl. and ☉ together.	4 19 8	27 18	12 3 6	6 32
16	F	4th Sun. af. Trin. D. le.	4 19 8	12 ♄ 50	13 3 33	7 21
17	2	St. Alban. (15h. 22m.	4 19 8	26 14	☉ rises.	8 10
18	3	<i>A spell of warm grow-</i>	4 19 8	10 ☽ 24	15 8 40	8 58
19	4	<i>ing weather.</i>	4 19 8	24 16	16 9 25	9 46
20	5	Tr. of Edw. K. W. Sax.	4 18 8	7 ☽ 46	17 10 5	10 34
21	6	7*s rise 1h. 18m. mo.	4 18 8	20 53	18 10 38	11 22
22	7	<i>Frequent showers.</i>	4 18 8	3 ☽ 38	19 11 8	12 10
23	F	5th Su. af. Tri. D.le. 15.	4 18 8	16 3	20 11 38	12 58
24	2	Nari. of St. John B. (24.	4 18 8	28 11	☾ morn.	1 45
25	3	Cl. fast 2m. 8f.	4 18 8	10 ☽ 8	22 0 20	2 32
26	4	☾ Apog. Low Tides.	4 18 8	21 58	23 0 48	3 19
27	5	<i>A spell of foggy weather</i>	4 18 8	3 ☽ 47	24 1 0	4 6
28	6	<i>about this season.</i>	4 18 8	15 39	25 1 32	4 53
29	7	St. Peter. (22m.	4 19 8	27 40	26 2 5	5 40
30	F	6th Su. af. Tr. D.le. 15h.	4 19 8	9 52	27 2 35	6 27

M	w	D	D
1	2		
2	3		
3	4		
4	5		
5	6		
6	7		
7	F		
8	2		
9	3		
10	4		
11	5		
12	6		
13	7		
14	F		
15	2		
16	3		
17	4		
18	5		
19	6		
20	7		
21	F		
22	2		
23	3		
24	4		
25	5		
26	6		
27	7		
28	F		
29	2		
30	3		
31	4		

New Moon, Tuesday 2d Day, at 11h. 13m. night.
 First Quarter, Tuesday 9th Day, at 11h. 58m. night.
 Full Moon, Tuesday 16th Day, at 9h. 3m. night.
 Last Quarter, Wednesday 24th Day at 4h. 22m. aft.

☉ enters ♋ Monday 22d Day at 6h. 49m, afternoon.

foren.
 m. even.
 foren.
 night.
 ng,
 s. H. W.
 M. H. M.
 28 6 36
 54 7 23
 ets. 8 10
 20 9 2
 16 9 54
 11 10 46
 1 11 38
 30 12 30
 59 1 22
 orn. 2 14
 0 3 6
 30 3 58
 7 4 50
 39 5 42
 6 6 32
 33 7 21
 es. 8 10
 40 8 58
 25 9 46
 5 10 34
 38 11 22
 8 12 10
 38 12 58
 rn. 1 45
 20 2 32
 48 3 19
 0 4 6
 32 4 53
 5 5 40
 35 6 27

M	w	Remarkable Days,	r. ☉ s.	☾	(r.) s.	H. W.
D	D	Aspects, Weather, &c.	H.M.H.	Place.	A. H. M.	H. M.
1	2	☉ in Aph. 7h. 13m. morn.	4 19 8	22 ♀ 20	28 3 10	7 14
2	3	Visi. of B. V. M. Modc.	4 20 8	5 ☽ 4	☾ sets. 8	0
3	4	Pleasant showers. (Tides.	4 20 8	18 5	1 8 56	8 51
4	5	Transl. of St. Martin.	4 21 8	1 ♀ 23	2 9 35	9 42
5	6	Cl. fast 4m. 7f.	4 21 8	14 55	3 10 7	10 33
6	7	7*s rise oh. 16m. morning.	4 22 8	28 39	4 10 45	11 25
7	F	7th Sun. aft. Trin. D. len.	4 22 8	12 ♀ 32	5 11 9	12 17
8	2	St. Killan. (15h. 16m.	4 23 8	26 31	6 11 30	1 9
9	3	Aspell of very warm	4 23 8	10 ☽ 36	☾ morn. 2	1
10	4	☾ Perig. Cl. fast 4m. 54f.	4 24 8	24 43	8 0 3	2 53
11	5	7*s ri. 11h. 50. af. weather.	4 25 8	8 ♀ 53	9 0 38	3 45
12	6	Succeeded by rain and	4 26 8	23 4	10 1 2	4 37
13	7	thunder.	4 27 8	7 ♀ 14	11 1 34	5 29
14	F	8th Sun. af. Trin. D. len.	4 28 8	21 20	12 2 13	6 26
15	2	Swithin B. (15h. 4m.	4 29 8	5 ♀ 19	13 3 2	7 10
16	3	7*s ri. 11h. 31m. Mid. tid.	4 30 8	19 8	☾ rises. 8	5
17	4	The heat encreases with	4 31 8	2 ☽ 43	15 8 10	8 51
18	5	Thunder	4 32 8	16 1	16 8 46	9 37
19	6	showers.	4 33 8	29 0	17 9 6	10 23
20	7	Marg. Cl. fast 5m. 54f.	4 34 8	11 ♀ 40	18 9 32	11 9
21	F	9th Sun. aft. Trin. D. len.	4 35 8	24 2	19 9 53	11 55
22	2	Magdalen. (14h. 50m.	4 36 8	6 ♀ 9	20 10 23	12 41
23	3		4 37 8	18 5	21 10 48	1 27
24	4	☾ Apog. Pretty full tides.	4 38 8	29 55	☾ 11 10	2 13
25	5	St. James. Dog Days begin.	4 39 8	11 ☽ 44	23 11 41	2 59
26	6	St. Anne. 7*s ri. 10.55. a.	4 40 8	23 37	24 morn. 3	45
27	7	♂ ♀ ♀ d. ff. Lat. 45'	4 40 8	5 ♀ 40	25 0 25	0 30
28	F	10th Sun. aft. Trin. D. len.	4 41 8	17 58	26 1 27	5 15
29	2	Foggy weather, (14.38.	4 41 8	0 ☽ 34	27 2 33	6 0
30	3	Cl. f. 6m. 1f. afterwards	4 42 8	13 32	28 3 41	6 45
31	4	heavy showers.	4 43 8	26 51	29 3 59	7 30

VIII. AUGUST, hath XXXI Days. 1799.

New Moon, Thursday 1st Day, at 9h. 32m. foren.
 First Quarter, Thursday 8th Day, at 4h. 41m. morn.
 Full Moon, Thursday 15th Day, at 8h. 15m. foren.
 Last Quarter, Friday 23d Day, at 10h. 7m. forenoon.
 New Moon, Friday 30th Day, at 6h. 46m. morn.

☉ enters ♍ Friday 23d Day, 1h. 3m. morning.

M	w	Remarkable Days,	r. ☉ s.	☾	☾ r. (s.	H. W.
D	D	Aspects, Weather, &c. &c.	H.M.H.	Place.	A. H.M.	H. M
1	5	Lammas-Day. ♀ ☽.	4 44 8	10 Ω 30	☾ sets.	8 10
2	6	♂ ☽ Cl. fast 5m. 52f.	4 45 8	24 27	1 8 10	9 2
3	7	Some pleasant showers.	4 46 8	8 ♍ 36	2 8 44	9 54
4	F	11th Sun aft. Trin. D. 1.	4 47 8	22 53	3 9 11	10 46
5	2	Growing weather. (14.26.	4 48 8	7 ♄ 13	4 9 37	11 38
6	3	Tran. of our Lord.	4 49 8	21 31	5 10 2	12 30
7	4	Name of Jesus. ☾ Perigee.	4 50 8	5 ♍ 44	6 10 30	1 22
8	5	Gr. Elong. ♀.	4 52 8	19 51	☾ 11 0	2 14
9	6	Heat continues intense.	4 53 8	3 ♄ 51	8 11 31	3 6
10	7	St. Lawrence. (b. 1737.	4 54 8	17 43	9 morn.	3 57
11	F	12th Su. af. T. Prs. of Br.	4 55 8	1 ♃ 27	10 0 16	4 48
12	2	Pr. of Wales born 1762.	4 56 8	15 3	11 1 2	5 39
13	3	Cl. fast 4m. 31f. Pleasant	4 57 8	28 27	12 1 48	6 30
14	4	Gr. Elong. ♀ growing	4 58 8	11 ♃ 40	13 2 36	7 21
15	5	weather.	4 59 8	24 38	☉ rises.	8 15
16	6	Pr. Fred. D. of York, born	5 0 7	7 ♃ 22	15 8 1	9 4
17	7	(1763.	5 2 7	19 51	16 8 32	9 53
18	F	13th Su. af. Tri. D. len.	5 4 7	2 ♃ 6	17 8 55	10 42
19	2	(13h. 52m.	5 5 7	14 8	18 9 22	11 30
20	3	Moderate Tides.	5 7 7	26 2	19 9 51	12 91
21	4	Pr. W. Hen. Duke Cl. b.	5 8 7	7 ♃ 50	20 10 25	1 7
22	5	(1765. ☾ Apogee.	5 10 7	19 38	21 11 3	1 55
23	6	Moderate showers.	5 12 7	1 ♀ 31	☾ 11 52	2 43
24	7	St. Bartholomew.	5 14 7	13 34	23 morn.	3 31
25	F	14th Sun. af. Tr. D. 1. 13.	5 16 7	25 52	24 0 40	4 19
26	2	*ri. 8h. 56m. af. (28m.	5 18 7	8 ♄ 31	25 1 58	5 7
27	3	♂ Stationary. Now	5 19 7	21 33	26 3 6	5 55
28	4	St. Augustine.	5 21 7	5 Ω 1	27 4 8	6 43
29	5	pleasant	5 22 7	18 55	28 5 10	7 31
30	6	again.	5 23 7	3 ♍ 10	☾ sets.	8 20
31	7		5 25 7	17 42	1 7 12	9 11

IX.

M	w	Remarkable Days,	r. ☉ s.	☾	☾ r. (s.	H. W.
D	D	Aspects, Weather, &c. &c.	H.M.H.	Place.	A. H.M.	H. M
1	F	15				
2	2	Lo				
3	3	☾				
4	4	D				
5	5	n				
6	6	7*				
7	F	En				
8	8	16				
9	2	(V				
10	3	Inf				
11	4	7*				
12	5	Cl.				
13	6					
14	7	Ho				
15	F	17				
16	2	7*				
17	3	La				
18	4					
19	5					
20	6	♂ S				
21	7	St.				
22	F	18				
23	2	(cr				
24	3					
25	4					
26	5	St.				
27	6					
28	7	Cl.				
29	F	19				
30	2	St.				

1799.

IX. SEPTEMBER, hath XXX Days. 1799.

foren.
morn.
foren.
noon.
orn.

First Quarter, Friday 6th Day, at 10h. 45m. foren.
Full Moon, Friday 13th Day, at 10h. 17m. night.
Last Quarter, Sunday 22d Day, at 3h. 9m. morn.
New Moon, Sunday 29th Day, at 3h. 50m. morn.

☉ enters ♌ Sunday 22d Day, at 9h. 35m. night.

S.	H.	W.
.	H.	M.
.	8	10
0	9	2
4	9	54
1	10	46
7	11	38
2	12	30
0	1	22
0	2	14
1	3	6
.	3	57
6	4	48
2	5	39
8	6	30
6	7	21
.	8	15
1	9	4
2	9	53
5	10	42
2	11	30
.	12	91
1	1	7
1	55	
2	43	
3	31	
4	19	
5	7	
5	55	
5	43	
7	31	
8	20	
9	11	

M	w	Remarkable Days,	r. ☉ s.	☾'s	☾	r. ☾ s.	H.W.
D	D	Aspects, Weather, &c.	H.M.H.	Place.	A.	H. M. H. M.	H. M.
1	F	15th Su. af. T. D.l. 13.6.	5 27 7	2♌24	2	7 36	10 2
2	2	London burnt 1666 O.S.	5 29 7	17 8	3	8 2	10 53
3	3	☾ Perig Moderate Tides.	5 31 7	1♌47	4	8 31	11 44
4	4	Dog Days end. <i>We may</i>	5 32 7	16 6	5	8 57	12 35
5	5	<i>now expect cool mornings</i>	5 34 7	1♌32	6	9 24	1 25
6	6	7*s r. 8.12. a. <i>Evenings.</i>	5 36 7	14 32	☾	10 1	2 15
7	7	Enurachus. Cl. fl. 2m. 11f.	5 37 7	28 18	8	10 41	3 5
8	F	16th Su. aft. T. Nat. of B.	5 39 7	11♍49	9	11 28	3 55
9	2	(V. Mary. B l. 12h. 42m.	5 40 7	25 7	10	morb.	4 45
10	3	Inf. ☽ ☽ 2h. 16m. after.	5 42 7	8♍10	11	0 30	5 35
11	4	7*s r. 3h. a. <i>Very pleasant</i>	5 44 7	21 2	12	1 28	6 26
12	5	Cl. fl. 3m. 54f. <i>about this</i>	5 45 7	3♌40	13	2 25	7 15
13	6	<i>time.</i>	5 46 7	16 7	☾	rises.	8 5
14	7	Holy Cross.	5 48 7	28 22	15	7 21	8 51
15	F	17th Su. af. Trin. D. le.	5 49 7	10♍27	16	7 58	9 37
16	2	7*s ri. 7h. 40m. af. (12.22.	5 51 7	22 24	17	8 16	10 23
17	3	Lambert. ☾ Apogee.	5 53 7	4♍13	18	8 49	11 9
18	4	<i>Falling weather</i>	5 54 7	16 0	19	9 28	11 55
19	5	<i>about this time.</i>	5 56 7	28 47	20	10 18	12 41
20	6	☽ Stationary.	5 57 7	9♏39	21	11 14	1 27
21	7	St. Matthew. 7*s r. 7.22.	5 58 7	21 40	22	morb.	2 13
22	F	18th Su. af. T. K. Geo. III	5 59 7	3♏57	☾	0 50	2 59
23	2	(cro. 1761. D.le. 12.2m.	6 0 6	16 33	24	1 47	3 45
24	3	<i>A serene, pleasant and</i>	6 1 6	29 33	25	2 48	4 31
25	4	<i>wholesome air.</i>	6 2 6	12♏59	26	3.49	5.16
26	5	St. Cyprian. ☽ gr. Elong.	6 4 6	26 54	27	4 50	6 2
27	6	(☽ Stationary.	6 6 6	11♏15	28	5.40	6.48
28	7	Cl. fl. 9.26f. (D.le. 11.40.	6 8 6	25 58	29	6 30	7 34
29	F	19th Su. af. Tr. St. Mich.	6 10 6	10♌56	☾	sets.	8 20
30	2	St. Jer. (Prs. Roy. b. 1766.	6 12 6	26 0	1	6 43	9 11

X. OCTOBER, hath XXXI Days. 1799.

First Quarter, Saturday 5th Day, at 7h. 20m. even.
 Full Moon, Sunday 13th Day, at 3h. 10m. aftern.
 Last Quarter, Monday 21st Day, at 6h. 30m. aftern.
 New Moon, Monday 28th Day, at 1h. 22m. aftern.

☉ enters ♍ Wednesday 23d Day, at 5h. 37m. morn.

M	w	Remarkable Days,	r.	☉ s.	☾ s.	☾ r.	☾ s.	H. W.
D	D	Aspects, Weather, &c. &c.	H.	M.	H.	A.	H. M.	H. M.
1	3	Remigius. ☾ Perig. Mid.	6	13	6	11	11	2
2	4	Cl. fl. 10m. 42f. (tides.	6	15	6	25	52	3
3	5	Frosty mornings and even-	6	17	6	10	25	4
4	6	ings, but pleasant days.	6	19	6	24	38	5
5	7	High winds.	6	20	6	8	29	6
6	F	20th Su. af. Tr. D.l. 11h.	6	22	6	21	58	7
7	2	Cl. fl. 12m. 11f. (16m.	6	23	6	5	7	8
8	3	A light fall of snow will	6	25	6	17	58	9
9	4	St. Denys. most probably	6	26	6	0	34	10
10	5	happen about this time.	6	27	6	12	56	11
11	6	☉ rise 6h. 9m. aft.	6	29	6	25	8	12
12	7	Cool mornings & evenings	6	31	6	7	11	13
13	F	21st S. af. Tr. Tran. of K.	6	32	6	19	7	14
14	2	(Ed. Conf. D.le. 10.56.	6	34	6	0	57	15
15	3	☾ Apog. Moderate tides.	6	36	6	12	45	16
16	4	Maria Antoinetta of France	6	37	6	24	32	17
17	5	Etheldered (beh. 1793.	6	39	6	6	21	18
18	6	St. Luke, Cl. fl. 14m. 47f.	6	40	6	18	16	19
19	7	☽ Stationary.	6	41	6	0	19	20
20	F	22d Su. af. Tr. D.l. 10.	6	43	6	12	35	21
21	2	Change of weather (34m.	6	44	6	25	8	22
22	3	Cl. fl. 15. 27f. about this	6	46	6	8	2	23
23	4	time; rain or snow.	6	47	6	21	21	24
24	5	(Sup. ☉ ☽.	6	49	6	5	7	25
25	6	K. Geo. III Accof. Crispin.	6	50	6	19	20	26
26	7	K. Geo. III Procl. 1760.	6	52	6	4	57	27
27	F	23d Su. af. Tr. D.l. 10. 14	6	53	6	18	55	28
28	2	St. Simon & Jude. ☾ per.	6	55	6	4	5	29
29	3	(☉ eci. in ♏.	6	56	6	19	18	30
30	4	Cl. flow 16m. 9f.	6	57	6	4	25	31
31	5		6	59	6	19	17	3

M	w	D	D
1	6	A	
2	7	P	
3	F	24	
4	3		
5	2		
6	3	P	
7	4	Q	
8	5	Pr	
9	6	a	
10	F	25	
11	2	St.	
12	3	So	
13	4		
14	5	Cl	
15	6		
16	7	fe	
17	F	26	
18	2		
19	3	Cl	
20	4	Ec	
21	5	Th	
22	6	C	
23	7	St	
24	F	27	
25	2	D	
26	3	7*	
27	4		
28	5		
29	6	C	
30	7	St	

1799.

even.
tern.
aftern.
aftern.
morn.

XI. NOVEMBER, hath XXX Days. 1799.

First Quarter, Monday 4th Day, at 7h. 20m. morn.
Full Moon, Tuesday 12th Day, at 9h. 54m. foren.
Last Quarter, Wednesday 20th Day, at 7h. 36m. morn.
New Moon, Tuesday 26th Day, at 11h. 36m. night
O enters ♄ Friday 22d Day, at 1h. 55m. morning.

S.	H.	W.
M.	H.	M.
11	10	2
39	10	53
17	11	44
57	12	36
41	1	28
35	2	20
34	3	12
rn.	4	3
45	4	55
50	5	45
57	6	35
12	7	25
33	8	10
50	8	58
48	9	48
26	10	36
8	11	24
2	12	12
59	1	0
9	1	48
n.	2	36
10	3	24
25	4	12
41	5	0
53	5	48
0	6	36
7	7	24
.	8	10
0	8	58
2	9	46
2	10	34

M.	w.	Remarkable Days,	r.	O.	s.	☾'s	☾	r.	☾.	s.	H.	W.
D.	D.	Aspects, Weather, &c.	H.	M.	H.	Place.	A.	H.	M.	H.	M.	H.
1	6	All Saints. ☽ ☾	7	0	5	3V 46	4	7	36	11	22	
2	7	Pr. Edward born 1767.	7	2	5	17 50	5	8	23	12	10	
3	F	24th Su. af. Tr. Prs. Sop.	7	3	5	1 27	6	9	14	12	58	
4	2	(b. 1777. D.le. 9h. 54m.	7	5	5	14 38	☾	10	15	1	46	
5	3	Powder Plot, 1605.	7	6	5	27 27	3	11	12	2	32	
6	4	☽ Sta. 7*s rise 4h. 36m. af.	7	7	5	9 56	9	morn.	3	24		
7	5	Prs. Aug. Sop. b. Perhaps	7	9	5	22 9	10	0	10	4	10	
8	6	a light fall of snow about	7	10	5	4 11	11	1	10	4	58	
9	7	Cl. fl. 15. 56f. this time.	7	11	5	16 5	12	2	16	5	46	
10	F	25th Su. af. T. D.l. 9. 36.	7	12	5	27 54	13	3	26	6	34	
11	2	St. Martin. ☾ Apogee.	7	13	5	9 42	14	4	36	7	22	
12	3	Some sharp weather about	7	14	5	21 30	☾	rises.	8	10		
13	4	this time, afterwards	7	15	5	3 21	16	5	57	9	1	
14	5	Cl. fl. 15. 18. more moderate.	7	16	5	15 17	17	6	37	9	52	
15	6	Proper weather for the	7	17	5	27 20	18	7	38	10	43	
16	7	season: A little snow.	7	18	5	9 32	19	8	48	11	34	
17	F	26th Su. af. Tr. D.l. 9. 22.	7	19	5	21 54	20	9	58	12	25	
18	2	(Hugh Bp. of Lincoln.	7	21	5	4 31	21	11	8	1	16	
19	3	Cl. fl. 14m. 18f.	7	22	5	17 25	22	morn.	2	7		
20	4	Edm. K. and Martyr.	7	23	5	0 37	☾	0	12	2	58	
21	5	Stationary.	7	24	5	14 12	24	1	22	3	49	
22	6	Cecilia. ☽ ☾ ☽	7	25	5	28 10	25	2	32	4	40	
23	7	St. Clement.	7	26	5	12 31	26	3	46	5	30	
24	F	27th Su. aft. Tr. D.l. 9. 6.	7	27	5	27 12	27	4	32	6	20	
25	2	D. of Glo. b. 1743. ☾ peri.	7	28	5	12 11	28	6	15	7	10	
26	3	7*s lo. 11. 20. af. Full tid.	7	29	5	27 18	☾	fets.	8	0		
27	4		7	30	5	12 25	1	5	15	8	47	
28	5		7	31	5	27 23	2	6	2	9	34	
29	6	Cl. slow 11m. 18f.	7	32	5	12 3	3	6	55	10	2	
30	7	St. Andrew.	7	33	5	26 18	4	7	47	11	8	

XII. DECEMBER, hath XXXI Days. 1799.

First Quarter, Tuesday 3d Day, at 11h. 12m. night.

Full Moon, Thursday 12th Day, at 4h. 41m. morn.

Last Quarter, Thursday 19th Day, at 6h. 27m. even.

New Moon, Thursday 26th Day, at 10h. 40m. foren.

☉ enters ♄ Saturday 21st Day, at 2h. 19m. aftern.

M. w	Remarkable Days, Aspects, Weather, &c.	r. ☉ s.	☾'s	☾ r. ☾ s.	H. W.
D D		H. M. H.	Place.	A. H. M.	H. M.
1 F	Advent Sun. D. 1. 8h. 52m.	7 34 5	♊ 6	5 8 47	11 55
2 2	A storm about this time afterwards Cold.	7 35 5	♋ 23	6 9 46	12 41
3 3		7 36 5	♌ 6	7 10 46	1 27
4 4	Cl. flow 9m. 22f.	7 37 5	♍ 18 48	8 11 53	2 13
5 5	Now moderate for the sea.	7 37 5	♎ 1	9 morn.	2 59
6 6	Nicholas. ☽ son, with some snow or rain.	7 38 5	♏ 12 58	10 1 8	3 45
7 7		7 39 5	♐ 24 49	11 2 24	4 31
8 F	2d Su. in Ad. Con. of V.M.	7 39 5	♑ 6 35	12 3 40	5 17
9 2	☾ Apog. (D. 1. 8h. 42m.	7 40 5	♒ 18 23	13 4 45	6 3
10 3	(Gr. Elong. ☽.	7 40 5	♓ 0 14	14 5 54	6 49
11 4	*s fo. 10h. 16m. A change	7 41 5	♈ 12 12	15 6 59	7 35
12 5		7 41 5	♉ 24 18	☾ rises.	8 14
13 6	Lucy. of weather, perhaps fair, perhaps foul.	7 42 5	♊ 6 35	17 5 40	9 5
14 7		7 42 5	♋ 19 2	18 6 48	9 56
15 F	3d Su. in Adv. D. 1. 8. 36.	7 42 5	♌ 1 40	19 7 58	10 47
16 2	*s fo. 9h. 54m. af.	7 42 5	♍ 14 30	20 9 8	11 38
17 3	☽ Stationary.	7 42 5	♎ 27 33	21 10 17	12 29
18 4	☽ ☾ 3h. 6m. morn.	7 42 5	♏ 10 49	22 11 26	1 20
19 5	Cl. flow 2m. 25f. ☽ ☾ 3h. 6m. morn.	7 42 5	♐ 24 21	☽ morn.	2 11
20 6		7 42 5	♑ 8 8	24 0 15	3 2
21 7	St. Thomas. *s f. 9. 22.	7 42 5	♒ 22 13	25 1 25	3 53
22 F	4th Su. in Ad. D. 1. 8. 36.	7 42 5	♓ 6 33	26 2 33	4 44
23 2	☾ Perigee. Pretty full tide.	7 42 5	♈ 21 8	27 3 42	5 35
24 3	☽ ☾ Cl. fast 6f.	7 42 5	♉ 5 54	28 4 53	6 25
25 4	CHRISTMAS DAY.	7 42 5	♊ 20 43	29 5 58	7 18
26 5	St. Stephen.	7 42 5	♋ 5 29	☾ sets.	8 10
27 6	St. John. Snow about this time.	7 41 5	♌ 20 3	1 5 20	8 58
28 7	Innocents.	7 41 5	♍ 4 18	2 6 19	9 46
29 F	1st Su. f. Christ. D. len.	7 41 5	♎ 18 9	3 7 24	10 34
30 2	☽ in Peril. (2h. 38m.	7 40 5	♏ 1 33	4 8 22	11 22
31 3	Silvester. Cl. fast 3m. 33f.	7 40 5	♐ 14 30	5 9 22	12 13

Of the

Month. P. D.

1	11
7	17
13	23
19	29
25	5

1	12
7	18
13	25
19	1
25	7

1	11
7	17
13	23
19	29
25	5

1	11
7	17
13	23
19	29
25	5

1	11
7	17
13	22
19	28
25	4

1	11
7	16
13	22
19	28
25	3

Novem Minutes.

ight.
orn.
ven.
foren.
n.

H. W.
H. M.
7 11 55
6 12 41
3 1 27
3 2 13
n. 2 59
8 3 45
4 4 31
10 5 17
45 6 3
54 6 49
59 7 35
8 8 14
8 9 5
48 9 56
58 10 47
8 11 38
17 12 29
26 1 20
n. 2 11
5 3 2
5 3 53
33 4 44
42 5 35
53 6 25
58 7 18
8 8 10
20 8 58
49 9 46
24 10 34
22 11 22
22 12 13

AN EPHEMERIS,

Of the Planets Places, for the 1st, 7th, 13th, 19th and 25th Days
of each Month in the Year 1799.

Days.	Month.	☉'s							Days.	Month.	☉'s										
		Place.	♀	♀	♂	♃	♄	♀			Place.	♀	♀	♂	♃	♄					
		D.	M.	♋	♌	♍	♎	D	M	D.	M.	♋	♌	♍	♎	D	M				
1	January.	11	21	28	12	11	17	24	22	36	1	9	42	5	22	4	16	27	19	2	
7		17	29	26	19	14	16	23	22	30	7	15	26	13	28	8	18	28	19	18	
13		23	36	18	27	18	16	23	22	23	13	21	9	Ω	♈	12	19	29	19	34	
19		29	42	13	♈	22	16	22	22	16	19	26	53	12	11	16	20	29	19	50	
25		5	48	13	12	25	17	22	22	9	25	2	Ω	36	22	18	19	21	Ω	20	5
1	February.	12	54	17	21	29	17	21	22	2	1	9	18	♈	25	24	23	1	20	20	
7		18	59	23	28	♄	18	21	21	49	7	15	3	11	28	24	2	20	42		
13		25	3	♈	♈	7	18	20	21	36	13	20	49	18	6	♈	25	2	21	4	
19		1	♈	6	9	13	11	19	20	21	23	19	26	34	23	12	5	26	3	21	25
25		7	8	18	21	15	20	20	21	11	25	2	♈	28	26	17	9	27	4	21	46
1	March.	11	8	25	26	17	20	20	20	59	1	9	9	25	22	13	28	5	22	7	
7		17	9	♈	♈	21	21	19	20	43	7	14	58	21	25	17	28	5	22	30	
13		23	8	15	10	25	22	19	20	27	13	20	49	15	28	21	49	6	22	53	
19		29	5	27	18	29	23	19	20	11	19	26	40	12	♈	25	♄	7	23	16	
25		5	♈	2	♈	25	♈	24	19	19	55	25	2	♄	33	15	2	29	1	7	23
1	April.	11	56	23	♄	7	26	19	19	58	1	8	17	22	1	♈	1	8	24	1	
7		17	50	♄	11	11	27	19	19	27	7	14	23	♈	♈	7	1	8	24	23	
13		23	43	13	18	14	28	20	19	16	13	20	19	12	26	11	1	9	24	44	
19		29	34	19	26	18	29	20	19	5	19	26	17	22	23	15	2	9	25	5	
25		5	♄	24	21	♈	22	♈	20	18	54	25	2	♈	16	♈	19	19	1	9	25
1	May.	11	14	20	10	26	2	21	18	45	1	9	16	13	17	23	1	9	25	47	
7		17	2	17	18	29	3	21	18	40	7	15	17	23	16	27	1	9	26	2	
13		22	49	13	25	♄	5	21	18	37	13	21	20	♈	17	♈	0	10	26	17	
19		28	36	12	♄	7	6	22	18	34	19	27	23	11	19	5	0	10	26	31	
25		4	♈	21	12	9	11	7	23	18	31	25	3	♈	27	20	22	9	♈	10	26
1	June.	11	4	17	17	15	9	23	18	28	1	9	33	28	26	13	29	10	26	59	
7		16	48	23	24	19	11	24	18	35	7	15	39	♈	♈	17	28	10	27	5	
13		22	32	♈	Ω	23	12	25	18	42	13	21	45	11	5	21	27	9	27	11	
19		28	16	11	8	27	14	25	18	49	19	27	51	12	11	25	26	9	27	17	
25		3	♄	59	23	15	Ω	15	26	18	56	25	3	♈	58	6	17	29	25	9	27

ERRATTA for the N. S. Calender 1798.

November 23d. Moon eclipsed, for *invisible* read, *visible* a few Minutes. before the Sun's rising.

THE
ROYAL FAMILY
OF
GREAT-BRITAIN.

GEOERGE III. King of Great-Britain, France, and Ireland, Elector of Hanover, born 4 June, 1738. Succeeded his Grandfather, K. George II. on 25 Oct. 1760. Married 8 Sept. 1761, to the Princess Charlotte of Mecklenburgh Strelitz, born 16 May, 1744, crowned 22 Sept. 1761, by whom he has issue.

1. George Prince of Wales, born 12 Aug. 1762. Married April 8, 1795, to Caroline-Amelia-Elizabeth, daughter of the Duke of Brunswic, born May 17, 1768; by whom he has issue Princess Charlotte Augusta, born, Jan. 7, 1796.

2. Frederic Duke of York, Bp. of Osnaburgh, 16 Aug. 1763, married, Sept. 29, 1791, Frederique Charlotte Ulrique Catharine, eldest daughter of the King of Prussia.

3. W. Henry, Duke of Clarence, 21st Aug. 1765.

4. Princess Royal, Charlotte Aug. Matilda, 29 Sept. 1766, lady of the Imperial Russian order of St. Catharine, married May 18, 1797, to his Serene Highness Frederic-Charles-William, Hereditary Prince of Wirtemberg-Stuttgart.

5. Edward, 2 Nov. 1767.

6. Augusta Soph. 8 Nov. 1768.

7. Elizabeth, 22 May, 1770.

8. Ernest Aug. 5 June, 1771.

9. Aug. Fred. 27 Jan. 1773, married in Nov. 1793, at Rome, to Lady Augusta Murray, daughter of the Earl of Dunmore, which was declared void in Aug. 1794.

10. Adolphus Fred. 24 Feb. 1774.

11. Mary, 25 April, 1776.

12. Sophia, 3 Nov. 1777.

13. Amelia, 7 Aug. 1783. The King's Brother and Sister are,

1. Augusta Duchefs of Brunswic.

2. William Henry, Duke of Gloucester, Earl of Connaught, 25 Nov. 1743, married 6 Sept. 1766, Maria, Countess Dow. Waldegrave, Daughter of Sir Ed. Walpole, K. B. by whom he has Sophia-Matilda, born May 29, 1773, and William Frederic, born Jan. 15, 1776.

Table

From
who
the
A. D.

801

38

58

60

66

900

92 5

41

48

55

59

75

79

1016

D

1017

1603 J

25 C

From th

A D

422 F

40 E

61 D

65 C

82 C

501 G

35 B

68 C

72 C

80 A

606 K

E

20 F

32 D

47 F

68 M

86 E

92 E

99 A

Table of **KINGS** and **QUEENS**; with the Time they severally began to Reign.

E N G L A N D.

From the Year 801, when England was first so called to the Year 1707 when the two Kingdoms of England and Scotland were united under the Name of the Kingdom of Great-Britain.

A. D.	Saxon Line.	A. D.	Norman Line.	A. D.	White and Red Rose united or the Line of Tudor.
	801 Egbert	36 Harold I		27 Edward III	
	38 Ethelwolf	39 Knute II		77 Richard II	Line of Lancaster or the Red Rose.
	58 Ethelbald	41 Edward Conf.		1461 Edward IV	
	60 Ethelbert	65 Harold II		83 Edward V	Richard III
	66 Ethelred		1066 William the Co.		
	900 Edward I Saxon.		87 William Rufus		
	92 5 Ethelstan		1100 Henry I		
	41 Edmond I		1135 Stephen		
	48 Edred		Saxon Line restored.		
	55 Edwin		1152 Henry II		1485 Henry VII
	59 Edgar		89 Richard I.		1509 Henry VIII
	75 Edw. II Saxon.		99 John		41 Edward VI
	79 Etheldred		1216 Henry III		63 Mary I
	1016 Edmond II		72 Edward I		58 Elizabeth
	Danish Line.		1307 Edward II		
	1017 Knute I				
Union of the Crowns of England and Scotland.					
	1603 James I		60 Charles II		88 Wm. III & Ma. II
	25 Charles I		1685 James II		1722 Anne.

S C O T L A N D.

From the Restoration by King Fergus II. in the Year 422 to the Union in the Year 1707.

A D	A D	A D
422 Fergus II	700 Eugene VII	73 Culenus
40 Eugene II	17 Mordach	78 Kenneth III
61 Dengard	30 Ethisus	94 Constantine IV
65 Constantine I	61 Eugene VIII	95 Crimus
82 Congale I	64 Fergus III	1003 Malcolm II
501 Goran	67 Salvathius	33 Duncan I.
35 Eugene III	87 Achaius	40 Macbeth, Ufurp.
68 Congale II	800 Congale III	57 Malcolm III,
72 Chinaule or Kin-natellus	14 Dongal	93 Donald
80 Aldan	20 Alphin	94 Duncan II
606 Kenrath I	23 Kenneth II	96 Edgar
Eugence IV	54 Donald V	1106 Alexander I
20 Ferchard I	58 Constantine II	24 Davld I
32 Donald IV	74 Ethus Swiftfoot	53 Malcolm IV
47 Ferchard II	75 Gregory	65 William the Lion
68 Maldwia	93 Donald VI	1214 Alexander II
88 Eugene V	904 Constantine III	49 Alexander III
92 Eugene VI	43 Malcolm I	85 Inter regnum
99 Amberchelet	58 Indulphus	92 John Balliol
	68 Daffus	1306 Robert 1st Bruce

A. D.
 1329 David 2d
 32 Edward Baliol
 70 Robert II
 90 Robert III
 1423 James I
 37 James II

A. D.
 1460 James III
 82 James IV
 1513 James V
 42 Mary
 67 James VI who
 succeeded to the
 crown of England

A. D.
 1625 Charles I
 60 Charles II
 85 James VII
 38 William III and
 Mary II
 1702 Anne

G R E A T - B R I T A I N .

From the Year 1707, when the two Kingdoms were united.

1707 Anne reigned 12 Years 4 Months 24 Days, died aged 49
 1714 George 1st reigned 12 Years, 10 Months, 10 days, died aged 67.
 1727 Geo. II reigned 33 Years, 4 Months 3 days, died aged 77.
 1760 Geo. III Whom God grant long to reign and prosper.

TABLE

Of the Value of Dollars at 4s. 8d. each.

Dol. lars.	Sterling.			Halifax.				Lawful Money.					
	L.	s.	d.	L.	s.	d.	f.	9pts.	L.	s.	d.	f.	5pts.
1	0	4	8	0	5	2	0	8	0	6	2	2	6
2	0	9	4	0	10	4	1	7	0	12	5	1	3
3	0	14	0	0	15	6	2	6	0	18	8	0	0
4	0	18	8	1	0	8	3	5	1	4	10	2	6
5	1	3	4	1	5	11	0	4	1	11	1	1	3
6	1	8	0	1	11	1	1	3	1	17	4	0	0
7	1	12	8	1	16	3	2	2	2	3	6	2	6
8	1	17	4	2	1	5	3	1	2	9	9	1	3
9	2	2	0	2	6	8	0	0	2	16	0	0	0
10	2	6	8	2	11	10	0	8	3	2	2	2	6
20	4	13	0	5	3	8	1	7	6	4	5	1	3
30	7	0	4	7	15	6	2	6	9	6	8	0	0
40	9	6	8	10	7	4	3	5	12	8	10	2	6
50	11	13	4	12	19	3	0	4	15	11	1	1	3
100	23	6	8	25	18	6	0	8	31	1	2	2	6
200	46	13	4	51	17	0	1	7	62	2	5	1	3
300	70	0	0	77	15	6	2	6	93	5	8	0	0
400	93	6	8	103	14	9	3	5	124	8	10	2	6
500	110	13	4	129	12	7	0	6	155	11	1	1	3
1000	221	6	8	259	5	2	1	3	311	2	2	2	6

Lieut
 Ma
 Ad

Hon.

Micha
 James
 Lawre
 Charle

Thom
 James

Willia
 Samue

Simeon
 Rich.

John
 Edwar

Benjan
 Elisba

Hector
 Wm. C

Stephe
 George

John S
 Thoma

PROVINCE OF NOVA-SCOTIA.

HIS EXCELLENCY.

SIR JOHN WENTWORTH, Baronet, L.L.D.
Lieutenant-Governor and Commander in Chief, in and over His Majesty's Province of Nova-Scotia, and its Dependencies, Vice-Admiral of the same, &c. &c. &c.

HIS MAJESTY'S COUNCIL.

Hon. Sampson Salter Blowers
— Richard Bulkeley
— Henry Newton,
— Alexander Brymer,
— Isaac Deschamps,
— Thomas Cochran,

Hon. Charles Morris,
— John Halliburton,
— Henry Duncan,
— James Delancy
— Benning Wentworth,

MEMBERS OF THE HOUSE OF ASSEMBLY.

County of Halifax.

Michael Wallace, Esq;
James Stuart, Esq;
Lawrence Hartthorne, Esq;]

Charles Morris, Esq;
County of Annapolis.

Thomas Millidge, Esq;
James Moody, Esq;
County of Cumberland.

William Freeman, Esq;
Samuel Embree, Esq;
Queen's County.

Simeon Perkins, Esq;
Rich. J. Uniacke, Esq;
County of Lunenburg.

John Wm. Schwartz, Esq;
Edward James, Esq;
King's County.

Benjamin Belcher, Esq;
Elisba Dewolf, Esq;
County of Hants.

Hector M'Lean, Esq;
Wm. Cottnam Tonge, Esq;
County of Shelburne.

Stephen Skinner, Esq;
George Grassie, Esq;
County of Sydney.

John Stuart, Esq;
Thomas Cutler, Esq;

Truro.—Math. Archibald, Esq;
Onslow.—Daniel Eaton, Esq;
Town of Halifax.

William Cochran, Esq;
John George Pyke, Esq;
Londonderry.

Robert M'Elhinney, Esq;
Annapolis.

Thomas Barclay, Esq;
Granville.

Alexander Howe, Esq;
Lunenburg.

John Bolman, Esq;
Horton.

Samuel Leonard, Esq;
Cornwallis

William Baxter, Esq;
Falmouth.

Jeremiah Northup, Esq;
Newport.

Shubael Dimock, Esq;
Amherst.

Thomas Lusby, Esq;
Windsor. John M' Monagle, Esq;
Liverpool.—Samuel Harr, Esq;
Yarmouth.—S. S. Poole, Esq;
Barrington.—John Sargent, Esq;
Digby.—Henry Rutherford, Esq;
Shelburne.—C. Campbell, Esq;

II and
ged 67.
7.

ney f. s. p. s.
2 6
1 3
0 6
2 6
1 3
0 6
2 6
1 3
0 6
2 6
1 3
0 6
2 6
1 3
0 6
2 6
1 3
0 6
2 6

JUSTICES of the PEACE throughout the PROVINCE.

Hon. S. S. Blowers,
 — Richard Bulkeley,
 — Henry Newton,
 — Alex. Brymer,
 — Thomas Cochran,
 — Charles Morris,

Hon. John Halliburton,
 — Henry Duncan,
 — James Delancey,
 — Benning Wentworth,
 R. J. Uniacke, Esq, Attorn. Gen.
 James Stuart, Esq; Soli. Gen.

Justices of the Peace

County of Halifax.—John Newton, Esq; Custos Rotulorum, Thomas Wood, Esq; his Deputy and Clerk of the Peace, Jonathan Binney, George Wm. Sherlock, John George Pyke, Mich. Head, William Taylor, Stephen H. Binney, William Porter, Theophilus Chamberlain, Wm. Jordan, James Gautier, William Cochran, Charles Morris, junr. Daniel Wood, Lewis Davis, William Thompson, John Philipps, Michael Wallace, James Fulton, James Yuill, John Harris, Eliakim Tupper, Robert Archibald, Hugh Denoon, John Ross, Andrew Belcher, Wm. Forsyth, John Solomon, Charles Hill, Lawrence Hartshorne, Richard Kidston, Philip Marchinton, Jonathan Tremain, James Clarke, John Wm. Schwartz, Robert Pagan, John Dawson, James Archibald, James Sutherland, Nicholas Purde Olding, John George Weaver, Edward Mortimer, Robert Geddes, Alexander Stuart, Samuel Tupper, Hibbert Newton Binney, William Logan, John Faulkner, William Cutting, Daniel M'Curdy, Dan. Morrison, Joshua Marsh, Alex. Waugh, James Moore, Thomas Wood, John Woodin, and John Bremner, Esquires.

County of Annapolis.—Phineas Lovet, Christopher Prince, S. Katherens, Benjamin James, Thomas Millidge, Isaac Bonnel, Sam. Chesley, Richard Hill, Alexander Howe, Josiah Jones, Christo. Benson, Andrew Snodgrafs, Edward Thorne, Thomas Williams, William Winniett, Stephen Jones, David Seabury, Amiable Dowsett, Thomas Cornwall, William Willet, Moses Shaw, Robert Fitz Randolph, Phineas Lovett, junr. and Benjamin Dodge, Esquires.

County of Lunenburg.—Joseph Pernette, D. C. Jessen, Jonathan Prescott, Josiah Marthal, J. C. Rudolf, Casper Woolenhaupt, F. G. Etter, J. Martin, Elishu Cooper, John Wm. Schwartz, J. Donig, and Joseph Rudolf, Esquires.

King's County.—John Barbidge, Handley Chipman, J. Chipman, John Bishop, jun. Jona. Crane, Jona. Shearman, Gurdon Denison, Daniel Bowen, Edward Potts, Robert Walker, John Fraser, Elisha Dewolf, Benjamin Belcher, Colin Campbell, Wm.

Can
 Ke
 Fill
 Count
 Wa
 sley
 Ste
 Queen
 Col
 Ho
 De
 County
 Chu
 Hed
 Cur
 Ton
 Sch
 Dim
 O
 County
 non
 Ogd
 Joh
 Lec
 Sam
 Den
 ly, F
 County
 Mar
 Geo
 Can
 Commi
 Annap
 Cornwa
 Horton,
 Windfo
 Annap
 Cumber
 Lunenb
 Hants,
 Yarmou

CE.

h,
n.Gen.
Gen.

orum,
Jona-
Mich.
Porter,
William
Davis,
James
Robert
Wm.
thorne,
James
awson,
Olding,
Geddes,
Binney,
el M'-
James
emner,

S. Ka-
Sam.
Christo.
lliams,
miable
Shaw,
njamin
nathan
upt, F.
rtz, J.

pman,
Den-
n Fra-
Wm.

Campbell, T. Ratchford, B. Gerrish Gray, E. Taylor, James Kerr, John Thomas Hill, John Allison, Elkanah Morton, John Fillis, Joseph Prescott and Stephen Harrington, Esquires.

County of Cumberland.—Edward Baron, Wm. Black, Thomas Watson, George Foster, Charles Baker, Henry Purdy, J. Pugsley, Samuel Kipp, George Oxley, jun. Thomas Lusby, John Stewart, and Alpheus Morse, Esqrs.

Queen's County.—Simeon Perkins, William Johnstone, Benajah Collins, William Freeman, Samuel Hunt, John Thomas, Elisha Hopkins, Hallit Collins, Joseph, Bass, Nathan Tupper, Isaac Dexter, Bartlet Bradford, and Joshua Newton, Esqrs.

County of Hants.—Joseph Gray, Jeremiah Northup, Constant Church, John Sandford, John Emerson, Duncan Campbell, Hector M'Lean, Keneth M'Donald, Benjamin Dewolf, Rich. Cunningham, John M'Monagle, John Bond, William Cottnam Tonge, Daniel M'Niel, John Clarke, Peter Shey, Otho Schwartz, Jon. Snelling, John M'Colla, Arnold Shaw, Shubal Dimock, John Walker, John Chambers, William Smith Isaac O'Brien, Wm. Salter and Josh. Sanford. Esquires.

County of Shelburne.—Stephen Skinner, John Crawley, R. M'Kinnon, Ephraim Cook, Archibald Smith, Joseph Durfee, Nicholas Ogden, Abraham Van Buskirk, David Thompson, Joshua Frost, John Homer, John Coffin, John Sargent, Ebenezer Parker, A. Leckie, Samuel S. Poole, Benjamin Barnard, Gideon White, Samuel Campbell, Greg. Springall, Edward Brinley, Benoni Dentremond, Nathaniel Richards, Samuel Marshal, James Kelly, Hyde Walter and Collin Campbell.

County of Sydney.—Timothy Hierlihy, George Dawkins, Joseph Marshal, Daniel M'Niel, Lifford Waldron, T. W. Hierlihy, Geo. Whitmore, Jo. Stuart, Tho. Cutler, John Stewart, Wm. Campbell, John Legget, Hyde Walter & Colin Campbell, Esqs.

Commissioners for taking Special Bail in the Country, on Actions, depending in the Supreme Court.

Annapolis, Wm. Winniett, Esqr.	Shelburne, C. Campbell, Esqr.
Cornwallis, John Burbidge, Esqr.	Digby, Richard Hill, Esqr.
Horton, Samuel Dennison, Esqr.	Cumberland, Char. Baker, Esqr.
Windfor, W.H. O. Halliburton.	Lunenburg, Fr. Rudolph, Esqr.

JUDGES of the COURT for the PROBATE of WILLS.

Honorable Charles Morris, Surrogate-General.

Annapolis, Wm. Winniet, Esqr.	Shelburne, C. Campbell, Esqr.
Cumberland, Edward Baron, Esqr.	Sydney, John Stuart, Esqr.
Lunenburg, J. Creighton, Esqr.	King's County: H. Chipman, Esq;
Hants, Hon. Jf. Deschamps	Queen's County: S. Perkins, Esq;
Yarmouth, S. S. Pool, Esqr.	

Secretary and Register of the Province.—Hon. Benning Wentworth.

Chief Surveyor of Lands.—Hon. Charles Morris.

Attorney-General.—Richard John Uniacke, Esq;

Solicitor-General.—James Stuart, Esq;

Speaker of the House of Assembly.—Thomas Barclay, Esq;

Clerk of the House of Assembly.—James B. Franklin, Esq;

Prothonotary and Clerk of the Crown.—Wm. Thompson, Esq;

Treasurer.—Michael Wallace, Esq;

Naval Officer.—William Cottonnam Tonge, Esq;

PROVINCIAL COURT of ADMIRALTY.

Hon. Richard Bulkeley, Judge. | Hon. Charles Morris, Register.
R. J. Uniacke, Esq; Ad. Gen. | James Putnam, Esq; Marshal.

HIS MAJESTY'S SUPREME COURT of the PROVINCE.

Honourable Sampson Salter Bowers, *Chief Justice.*
Isaac Deschamps and James Brenton, *Justices.*

JUSTICES of the INFERIOR COURT of COMMON PLEAS.

County of Halifax; Hon. Henry Newton, Jonathan Binney, Francis Green, Mich. Wallace, and Daniel Wood, Esqrs.

County of Annapolis; Alexander Howe, Thomas Barclay, Da. Seabury, Josiah Jones, and Thomas Millidge, Esqrs.

County of Lunenburg; John Creighton, Joseph Pernette, D. C. Jeffen, Jon. Prescott, and J. C. Rudolf, Esqrs;

King's County; John Burbidge, J. Chipman, Gurd. Dennison Eli. Dewolf & Wm. Campbell.

Queen's County; Sim. Perkins, Wm. Johnstone, Sam. Freeman, and Ben. Collins Esqrs;

County of Hants; G. H. Monk, Joseph Gray, Hector M'Leau

and William C. Tonge, Esqrs.
County of Cumberland.—Edward Barron, Charles Baker, and Wm. Freeman, Esqrs.

County of Shelburne.—Stephen Skinner, Nicholas Ogden, John Sargent, and Gideon White, Esqrs.

District of Yarmouth.—John Crawley, Nathan Utley, and S. Sheldon Poole, Esqrs;

District of Colchester.—James Fulton, J. Fraser, Hugh Denoon, John Ross, Robert Pagan, and John Dawson Esqrs;

County of Sydney; John Stuart, George Dawkins, Thomas Cutler, and James Stewart, Esqrs;

Hon
Joh
Joh

Joh
Dan
Mr.
Mr.
Mr.
Mr.

Coll

SUR

His E

Jame

Rich
Jame
Edwa
Foster

1st Ja
18th
30th
17th
25th
23d A
29th

C
4th J
24th
12th
B
22d

OFFICERS of His MAJESTY'S CUSTOMS.

Hon. Henry Newton, Collector.	Mr. John H. Flieger, Gauger.
John Slayter, Esq; Comptroller.	Isaac Mellingham, } Tide-Waiters
John Newton, Esq; Surveyor and Searcher.	Hammond Green, }

OFFICERS for Collecting the PROVINCIAL DUTIES.

John Newton, and Hibbert Newton Binney, Esquires, Collectors.
 Daniel Wood, Esq; Inspector and Searcher.
 Mr. John Cleaveland, Collector of Licence Duty.
 Mr. John H. Flieger, Gauger.
 Mr. John Selby, Land Waiter.
 Mr. Henry Newton, jun. Assistant.

Collectors of Light Duty. {
 Halifax : John Newton, Esq;
 Digby : Niel M'Niel, Esq;
 Annapolis : James Hughston,
 Shelburne : Edward Brinley, Esq;

PORT of SHELBURNE.

James Bruce, Esq; Collector.
 David Thompson, Esq; Comptroller.
 Archibald Scott Bruce, Esq; Surveyor and Searcher.
 Mr. Richard Brazel, Gauger.

SURVEYOR-GENERAL of WOODS in the PROVINCE of NOVA-SCOTIA, and all other His Majesty's Territories in NORTH-AMERICA.

His Excellency Sir JOHN WENTWORTH, Baronet.

NOTARY PUBLICKS by KING'S AUTHORITY.

James Gautier, Esquire.	James Clark, Esquire.
PROVINCIAL NOTARIES.	
Richard John Uniacke, Esquire.	C. Campbell, Esq; Shelburne.
James Stuart, Esquire.	N. P. Olding, Esq; Pictou.
Edward Brenton, Esquire.	Peleg Witwell, Esq; Annapolis.
Foster Hutchinson, Esquire.	

HOLIDAYS at the PUBLIC OFFICES.

1st January.—New Year's Day.	29th Sept.—Michaelmas Day.
18th do.—Queen's Birth Day.	25th Oct.—George III Accession.
30th do.—King Charles Martyr.	5th Nov.—Gun-powder Plot.
17th March.—St. Patrick.	30th ditto.—St. Andrew.
25th do.—Lady Day.	25th Dec.—Christmas Day.
23d April.—St. George.	26th do. } Christmas Holidays.
29th May.—Restoration of King Charles II.	27th do. }
4th June.—King's Birth Day.	28th do. }
24th do.—St. John.	Good Friday.
12th August.—Prince of Wales's Birth-Day.	Easter Monday.
22d Sept.—George III. crowned.	Easter Tuesday.
	Whit-Monday.
	Whit-Tuesday.

SITTINGS of the COURTS and SESSIONS in this PROVINCE.

SUPREME COURT.

At HALIFAX :—The second Tuesday of January, first Tuesday of April, second Tuesday of July, second Tuesday of October.
 At WINDSOR.—On the third Thursday of May and September.
 At HORTON.—In King's County, on the Monday following the sit-

ting of the Court at Windsor.
 At ANNAPOLIS.—On the Monday following the sitting of the Court at Horton.
 At AMHERST.—In the County of Cumberland, in the month of June, on the second Tuesday after sitting of the Court at Annapolis.

INFERIOR COURT of COMMON PLEAS.

At HALIFAX.—On the first Tuesdays of the Month of March, June, September and December.
 At ANNAPOLIS.—On the first Tuesday of April, and the first Tuesday of November.
 At LUNENBURG.—On the second Tuesday of April, and second Tuesday of October.
 At HORTON.—On the first Tuesday of June, and first Tuesday of October.
 At LIVERPOOL.—On the second Tuesday of April, and second Tuesday of November.
 At TUSKET VILLAGE.—On the first Tuesday of April, and last Tuesday of October.
 At AMHERST.—On the next day after the sitting of the Supreme

Court in the month of June and on the last Tuesday of October.
 At SHELBURNE.—On the first Tuesday of March, first Tuesday of July, and first Tuesday of Nov.
 At ONSLOW.—On the first Tuesday of January.
 At WALMSLEY.—On the first Tuesday of April.
 At ONSLOW.—On the first Tuesday of July.
 At WALMSLEY.—On the first Tuesday of October.
 At WINDSOR.—On the first Tuesday of April, and the first Tuesday of October.
 At GUYSBOROUGH.—In the County of Sydney, on the second Tuesday of February and second Tuesday in August.

SESSIONS of the PEACE.

At HALIFAX.—On the first Tuesday of March, the first Tuesday of June, the first Tuesday of September and the first Tuesday of December.
 At LUNENBURG.—The second Tuesday of April, and second Tuesday of October.
 At HORTON.—The first Tuesday of June, and the first Tuesday of October.
 At LIVERPOOL.—The second Tuesday of April, and second Tuesday of Nov. and and last Tuesday of October.
 At BARRINGTON.—The first Tuesday of November.
 At TUSKET VILLAGE.—The first Tuesday of April.

At AMHERST.—On the next day after the sitting of the Supreme Court in the month of June, and on the last Tuesday of August.
 At ONSLOW.—On the first Tuesday of January; at Walmsley, first Tuesday of April; at Onslow first Tuesday of July; at Walmley, first Tuesday of October.
 At SHELBURNE.—The last Tuesday of March, and last Tuesday of October.
 At WINDSOR.—The first Tuesday of April, and last Tuesday of October.
 At GUYSBOROUGH.—In the County of Sydney, on the second Tuesday of February, and second Tuesday in August.

Lew

Robe

Char

Henr

John
 Rich.
 Mich.
 Charle
 Rich.

Benj.
 Willia
 Ephrai
 Samue
 Willia
 Michae

1st Jan
 18th d
 D
 17th M
 23d A
 4th Ju

Hon. H
 Mr. P.
 quarso
 Titus L
 Store
 Mr. A.
 Cler
 Elias M
 Mr. Th
 ster S
 Tho. R
 Mr. W
 Ship

Hon. J

ANCE.

indfor.
Monday
e Court

ounty of
month of
fday after
nnapolis.

June and
October.
first Tues-
day of
of Nov.
Tuesday

first Tues-

Tuesday

the first

st Tues-

st Tues-

he Coun-

nd Tues-

nd Tues-

next day

Supreme

une, and

ugust.

Tuesday

ley, first

slow first

Valinsley,

st Tues-

uesday of

Tuesday

y of Oc-

he Coun-

SHERIFFS in the several Counties in this PROVINCE.

HALIFAX. Lewis Wilkins, Esq.	J. Thomas Hill, Esq;
ANNAPOLIS. Robert Dickson, Esq.	QUEEN'S COUNTY. Nathan Tupper, Esq;
CUMBERLAND. Charles Chandler,	SHELburne. Thomas Crowell, Esq;
LUNENBURG. Henry Kaulback,	HANTS. Benjamin Dewolf, Esq;
KING'S COUNTY.	SYDNEY. Wm. T. Hierlihy, Esq;

FIRE-WARDS for the TOWN of HALIFAX.

John Geo. Pyke, Esq;	Mr. John Cleaveland,	Mr. George Bell,
Rich. J. Uniacke, Esq;	James Cochran, Esq;	James Clarke, Esq;
Mich. Wallace, Esq;	William Lawlor, Esq;	Mr. Thomas Fillis,
Charles Hill, Esq;	Mr. William Millet,	Mr. John Stealing,
Rich. Kidston, Esq;	Elias Marshall, Esq;	Mr. Andrew Liddle.

FIRE-ENGINE COMPANY for the TOWN of HALIFAX.

Beni. Bridge, Captain.	Thomas Adams	John McKinze,
William Milward,	Archibald Wilson,	John Head,
Ephraim Whiston,	John Brown,	Alex. Smith,
Samuel King,	Thomas Donaldson,	Kenneth McKinzee,
William Hogg,	Alexander Clunies,	Jeremiah Boyer,
Michael Perkins	Robert Milne,	

LEVEE DAYS at the GOVERNMENT-HOUSE.

1st January.—New Year's Day.	12th Aug.—Prince of Wales birth Day.
18th do.—Queen Charlotte's birth Day.	22d Sept. George III crowned.
17th March.—St. Patrick.	25th October.—George III Accession.
23d April.—St. George.	30th November.—St. Andrew.
4th June.—King's birth day.	

OFFICERS of His Majesty's NAVAL-YARD.

Hon. H. Duncan, Esq; Commissioner.	Mr. Wm. Lee, Foreman of House Carpenters.
Mr. P. F. Wallis, and Mr. A. Farquarson, Clks. to the Commissioner.	Mr. John Brush, Foreman of Smiths.
Titus Livie, Esq; Naval Officer and Storekeeper.	Mr. John Gardner, Foreman of Sail-makers.
Mr. A. Anderson, and Mr. B. James, Clerks to the Naval Storekeeper.	Mr. John King, Foreman of Masons
Elias Marshal, Esq; M. Shipwright.	Mr. James Robertson, Foreman of Labourers.
Mr. Tho. Wood, Clerk to the Master Shipwright.	Mr. David Ridgeway, Boatwain of the Ordinary.
Tho. Read, Esq; Master-Attendant.	Mr. G. Andrew, Purveyor of Masts.
Mr. William Hughes, Foreman of Shipwrights.	Mr. Duncan Clarke, Surgeon.
	Mr. Stephen Cullen, Porter.

His MAJESTY'S NAVAL-HOSPITAL.

Hon. J. Halliburton, Surg. & Agent.	Mr. M'Evoy,	Assistant.
-------------------------------------	-------------	------------

OFFICERS of His Majesty's Ships on this Station, under the Command
of GEORGE VANDEPUT, Esq; Vice-Admiral of the White, &c.
&c. &c.

A S I A,
64 Guns.

Robert Murray, Esq; Capt.
Jof. Spears, 1st Lieut.
John Sykes, 2d Lieut.
G.G. Lenock, 3d Lieut.
Alex. Skene, 4th Lieut.
John Mowett, 5th Lt.
A. V. Drury, 6th Lt.
Wm. Chalmers, Mast.
Jof. Trounsell, Purfer
Paul Crebbin, 1st Lieut.
Cookfley, Chapl.

St. A L B A N S,
64 Guns.

Fra. Pender, Esq; Capt.
John Lyne, 1st Lieut.
— Stewart, 2d do.
— Morris, 3d do.
Jno. McLeod, 4th do.
Jno. Code, 5th ditto
Murdo Downie, Mast.
— Fleming, Surgeon
Tho. Phelp, Purfer.
C. W. Cartwright,
— Captain of Marines.
— Germaine, Lieut.
— Herring, Chaplain

ASSISTANCE,
50 Guns.

J.O. Hardy, Esq; Capt.
J. Wareham, 1st Lieut.
W. J. Simons, 2d do.
R. Dunham, 3d ditto
J. Skelton, 4th ditto
Wm. Scargill, Mast.
R. Cinnamon, Surgeon
J. Atcherley, 1st Lieut.
Marines

PREVOYANTE,
38 Guns.

John Seater, Esq; Capt.

Wm. McLeod, 1st Lt.
Tho. McCulloch, 2d
John Smith, 3d do.
L. Little, Mast.
E. Beaumont, Surgeon.
John Cock, Purfer.

CLEOPATRA,
32 Guns.

If. Pellow, Esq; Capt.
Joseph Taylor, 1st Lt.
G. V. Crosby, 2d Lt.
W. Richardson, 3d Lt.
— Penrose, Mast.
Jno. Fairfoul, Surgeon.
W. Kitchingham, Purf.
J. N. N. D'Esterre, Lt.
Marines.

HIND,
28 Guns.

J. Larcom, Esq; Capt.
Fran. Stanfell, 1st Lt.
J. E. Froud, 2d Lt.
— Mast.
Ralph Cumming, Surg.
T.R. Sugars, Purfer.
— Meredith, Lt. Ma.

PORCUPINE,
24 Guns.

A. F. Evans, Esq; Capt.
John Evans, 1st Lt.
Ather Stow, 2d Lieut.
Wm. Baker, Mast.
— M^cQueen, Surg.
John Pearce, Purfer.
— Clark, Lt. Mari.

PHEASANT,
18 Guns.

W. Skipsley, Esq; Capt.
Maurice Walsh, 1st Lt.
James Money, 2d Lt.
Francis Whitney, Mast.
Charles Carr, Surgeon.
Mich. Collins, Purfer.

L Y N X,
18 Guns.

Robert Hall, Esq; Capt.
Ed. O'Brien, 1st Lt.
Geo. George, 2d Lt.
James Downie, Mast.
Wm. Jamieson, Surg.
Henry Long, Purfer.
Wm. Phillips, Lt. Ma.

DRIVER,
18 Guns.

J. Dunbar, Esq; Capt.
— Kellop, 1st Lt.
A. Rose, 2d Lieut.
— Mast.
Wm. Rutledge, Surg.
J. Fogarty, Purfer.

D A S H E R,
18 guns.

Geo. Tobin, Esq; Capt.
Wm. Adams, 1st Lt.
Wm. Avery, 2d Lt.
Rich. Patelon, Mast.
Dan. Heffernan, Surg.
John Brenton, Purfer.

S P E N C E R,
18 guns.

J. Walton, Esq; Capt.
John Bate, 1st Lieut.
John Baldwin, Mast.
Robert Hume, Surg.
C. E. Andrews, Purfer.

Agent for Prisoners of
War.
Daniel Lyman, Esq;
Mr. J. Proud, Clerk.

STAFF of the ARMY ; under the Command of Lieutenant-General His Royal Highness Prince EDWARD.

<p>Aid-du-Camps, Major John Vesey and Captain G. S. Smith. Military Secretary, Captain John Hale. Lieutenant-General, James Ogilvie. Aid du-Camp, Capt. Wm. Cox. Brigadier-General, John Murray. Major of Brigade, Major John Murray. Deputy Adjutant General ; Lieut. Col. F. A. Wetherall. Major of Brigade ; Capt. Walker. Commanding Royal Engineer ; Major James Stratton. Commissary and Storekeeper General ; George Brinley, Esq; Assistant Commissary General Provision Branch ; Assistant Commissary General Fuel Branch ; Foster Hutchinson, Esq; Commissary of Musters ; William Potter, Esq; Deputy Barrack Master General ; James Putnam, Esq;</p>	<p>Ordnance Storekeeper ; Clement Horton, Esq; Barrack Master ; Stephen H. Binney, Esq; Clerk of the Cheque ; James Spry Heaton, Esq; Deputy Paymaster to the Forces ; Hon. Alexander Brymer. Acting Comptroller of Army Accounts ; John Beckwith, Esq; Deputy Judge Advocate ; Edward B. Brenton, Esq; Surgeon to the Forces, &c. Tho. Irwin. Assistants ditto. James Boggs, and Boyd. Surgeon to the Garrison at Annapolis ; George Henkel. Assistant ; Joseph Pierce. Surgeon to the Ordnance and Artillery ; W. J. Almon. Chaplain to the Garrison ; Rev. J. J. Wetherall.</p>
---	---

OFFICERS of the REGIMENTS.

Under the Command of Lieutenant-General His Royal Highness Prince EDWARD.

ROYAL ARTILLERY.

<p>Lieut. Colonel. Thomas Desbrisay. Capt. Lieutenant. Robert Wright. 1st Lieutenants. George C. Mercer,</p>	<p>J. Duer, 2d Lieutenants. Thomas Desbrisay Surgeon. Wm. J. Almon</p>
---	--

7th REGIMENT of FOOT, (or ROYAL FUSILIERS.)

<p>Colonel. His Royal Highness Prince EDWARD. Lieut. Colonels. John Despard A. L. Layard Majors. James Burrowes Walter Cliffe</p>	<p>Captains. Thomas L'Estrange Thomas Saumarez Robert Walker Geo. S. Smith J. A. Prevost Edward J. S. Pyng John Birmingham Brenton Halliburton</p>	<p>Capt. Lieutenant. Frederick Hardyman Lieutenants. Alex. Sterling Robert Burton William Bernard B. V. Layard George Harris William Despard</p>
--	--	--

Robert Robinson
 H. G. Howe
 John Holland
 Winckworth Tonge
 John Weeks
 John Personage
 Frederick Holland
 Charles Sheekleton
 Thomas Fitzsimons
 Donald Campbell
 Joseph Taylor

Lewis J. Skinner
 Hon. B. Cochrane
 Fred. A. Wetherall
 William Bowyer
 Charles Nowel
 Henry Crotty
 Hutton Rowe
 Alexander Walker
 Christopher Taylor
 Robert Finley
 J. Mervin Nooth

Edward O'Hara
 Donald M'Kinnon
 Mathew Teigh
 Chaplain.
 John Wetherall
 Adjutant.
 Frederick Hardyman
 Quarter Master.
 Joseph Parkes
 Surgeon.
 John Copland

DETACHMENT of the 66th REGIMENT.

Major.
 James W. Gordon

Lieutenants.
 Francis Whitfield

William L. Fortescue
 Edward Stokes

ROYAL NOVA-SCOTIA REGIMENT.

Colonel.
 Sir J. Wentworth, Bt.
 Lieut. Colonels.
 Francis Kearny
 Samuel V. Bayard
 Major.
 George Thefinger
 Captains.
 John Solomon
 Jones Fawton
 Alexander Howe
 John Allen
 William Cox
 Delancy Barclay
 Capt. Lieut.
 Job Bennet Clarke
 Lieutenants.
 Thomas Morris

Joshua Wingate Weeks
 John G. De Greben
 Otho Schwartz
 Philip Kearny
 Eric Sutherland
 George Henry Monk
 Michael Purnett
 Charles Rudolf
 Robert Campbell
 John C. Ritchee
 John W. Emerson
 Timothy Ruggles
 Richard W. Green
 George Westphall
 Isaac Glennie
 Hibbert Newton
 Ensigns.
 John Fitzsimons

Frederick Muller
 Stephen Bayard
 William E. Rivington
 Charles Wm. Solomon
 Tho. A. C. Winslow
 Chaplain.
 Robert Stanfer
 Adjutant.
 George Westphall
 Quarter Master.
 Alexander Frazer
 Surgeon.
 John Frazer
 Assistant do.
 Jonathan W. Clarke

Extract from the Proceedings of the Burlington Society.

AN approv'd Method to preserve the fine flavour of Butter, and to prevent its growing rancid.

To a Peck of fine Salt take one ounce of crude Sal ammoniac and two ounces of Saltpetre both finely powdered and mix them intimately with the fine Salt: With this Salt work your Butter, until the Butter Milk is entirely extracted, then pack it in Wooden Firkins salting it with the same mixed Salt to such a degree as to be palatable when eat with Bread, and no Salter, this mixture is stronger than fine Salt, of consequence something less is required.

By order of the Society,

Wm. COX, Sec'ry.

A TABLE of several Coins, calculated, DOLLARS at four Shillings and Eight Pence.

DOLLARS.			GUINEAS.			MOIDORES.		JOANNES'S.		
Do.	L.	s. d.	Gu.	L.	s. d.	Mo.	L. s.	Jo.	L.	s. d.
1 is	0	4 8	1 is	1	1 9 $\frac{1}{2}$	1 is	1 8	$\frac{1}{10}$ is	0	4 8
2	0	9 4	2	2	5 6 $\frac{2}{3}$	2	2 16	$\frac{1}{5}$	0	9 4
3	0	14 0	3	3	3 4	3	4 4	$\frac{1}{4}$	0	18 8
4	0	18 8	4	4	7 1 $\frac{1}{3}$	4	5 12	$\frac{1}{3}$	1	17 4
5	1	3 4	5	5	8 10 $\frac{2}{3}$	5	7 0	1	3	14 8
6	1	8 0	6	6	10 8	6	8 8	2	7	9 4
7	1	12 8	7	7	12 5 $\frac{1}{3}$	7	9 16	3	11	4 0
8	1	17 4	8	8	14 2 $\frac{2}{3}$	8	11 4	4	14	18 8
9	2	2 0	9	9	16 0	9	12 12	5	18	15 4
10	2	6 8	10	10	17 9 $\frac{1}{3}$	10	14 0	6	22	8 0
11	2	11 4	11	11	19 6 $\frac{2}{3}$	11	15 8	7	26	2 8
12	2	16 0	12	13	1 4	12	16 16	8	29	17 4
13	3	0 8	13	14	3 1 $\frac{1}{3}$	13	18 4	9	33	12 0
14	3	5 4	14	15	4 10 $\frac{2}{3}$	14	19 12	10	37	6 8
15	3	10 0	15	16	6 8	15	21 0	11	41	1 4
16	3	14 8	16	17	8 5 $\frac{1}{3}$	16	22 8	12	44	16 0
17	3	19 4	17	18	10 2 $\frac{2}{3}$	17	23 16	13	48	10 8
18	4	4 0	18	19	12 0	18	25 4	14	52	5 4
19	4	8 8	19	20	13 9 $\frac{1}{3}$	19	26 12	15	56	0 0
20	4	13 4	20	21	15 6 $\frac{2}{3}$	20	28 0	16	59	14 8
21	4	18 0	21	22	17 4	21	29 8	17	63	9 4
22	5	2 8	22	23	19 1 $\frac{1}{3}$	22	30 16	18	67	4 0
23	5	7 4	23	25	0 10 $\frac{2}{3}$	23	32 4	19	70	18 8
24	5	12 0	24	26	2 8	24	33 12	20	74	13 4
25	5	16 8	25	27	4 5 $\frac{1}{3}$	25	35 0	21	78	8 0
50	11	13 4	50	54	8 10 $\frac{2}{3}$	50	70 0	22	82	2 8
100	23	6 8	100	108	17 9 $\frac{1}{3}$	100	140 0	23	85	17 4
200	46	13 4	200	217	15 6 $\frac{2}{3}$	200	280 0	24	89	12 0
300	70	0 0	300	326	13 4	300	420 0	25	93	6 8
500	116	13 4	500	544	8 0 $\frac{2}{3}$	500	700 0	50	186	13 4
1000	233	0 8	1000	1088	17 9 $\frac{1}{3}$	1000	1400 0	100	373	6 8

USEFUL HINT.

Communicated by the Royal Society of Sweden, to that of London.
 After roofing a house with wood, boil tar in a kettle, and mix finely pulverised charcoal with it, till it is of the thickness of mortar; spread this with a trowel about a fourth of an inch thick, over the roof; it will soon grow hard and defy all the vicissitudes of weather. Roofs thus covered, have stood in Sweden above a century, and still want no repair.

Distance from Halifax to Poistou, on the New Road, via Musquodobit, viz.

MILES.	MILES.
From Halifax, across the Ferry, to Dartmouth, $1\frac{1}{2}$	From Alex. Henry's $1\frac{1}{2}$
To Preston, Bradley's 6	Mr. Rob Dunbar's (first Settlement) on the west branch of the east river of Poistou $26\frac{1}{2}$
Mr. Putnam's Farm 5	Mr. Wm. M'Kay's 8
Mr. Porter's ditto 5	Mr. John Fraser's 7
Mr. Wm. M'Keen's 11	Across the harbour to Walmsley Court-House 1
Mr. Leckie's 13	
Mr. Robert Archibald's 4	
Mr. Robert Geddes's 4	
<hr/>	<hr/>
49 $\frac{1}{2}$	44—93 $\frac{1}{2}$

DISTANCE between Halifax and Annapolis Royal, with the Houses of Entertainment on the Road.

MILES.	MILES.
From Halifax to Fort Sackville, Maddocks 10	To Bishop's Farm 7
To Wenman's Farm 5	To Fowler's 3
To Sprinfield 3	To Peck's 6
To Eglington 3	To Inglis's Farm 4
To Pence's Farm $4\frac{1}{2}$	To Stedman's 5
To Morris's 5	To Aylesford Township boundary 6
To Montague house 6	To Buskirk's Farm 6
To Margaret Place 2	To Clermont, (the Bishop of Nova-Scotia's Seat) 1
To Windsor $6\frac{1}{2}$	To Dodge's Farm 7
To the Ferry House Fal-mouth 2	To Leonard's Farm $10\frac{1}{2}$
To Half way River 5	To Hick's Ferry 6
<hr/>	To Annapolis Ferry 15
52	<hr/>
	78

ROAD from Halifax to Fort-Cumberland. MILES.

From Halifax to Windsor	45
To Partridge Island (Parrsboro') by water Crane's Lewis's, at half way river, Parrsboro'	30
Moore do.	9
Jeffers, Head of the River Hebere	1
Barronsfield	10
Davison, Amherst	12
Baxter, Do.	3
Fort Cumberland	8
	<hr/>
	6-77
	<hr/>
	122

