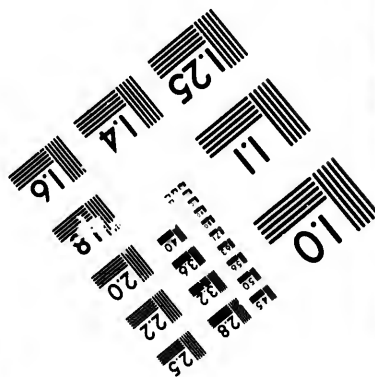
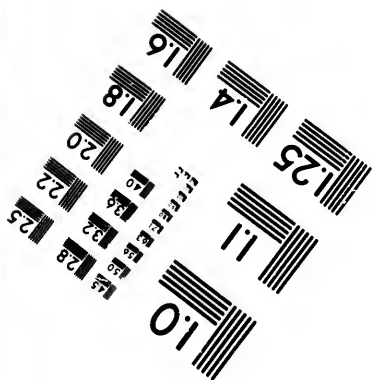
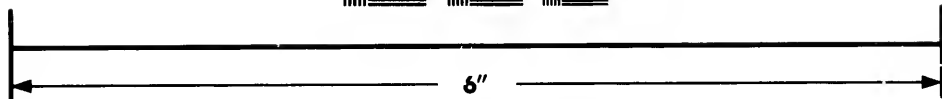
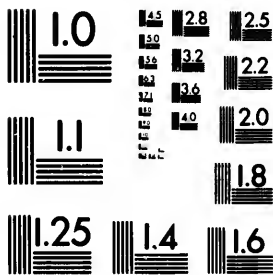


**IMAGE EVALUATION  
TEST TARGET (MT-3)**



**Photographic  
Sciences  
Corporation**

23 WEST MAIN STREET  
WEBSTER, N.Y. 14580  
(716) 872-4503

14.5 12.8  
14 13.2  
13.6 12.2  
13 12  
11.8

**CIHM/ICMH  
Microfiche  
Series.**

**CIHM/ICMH  
Collection de  
microfiches.**



Canadian Institute for Historical Microreproductions / Institut canadien de microreproductions historiques

11  
10  
9.5

**© 1982**

Technical and Bibliographic Notes/Notes techniques et bibliographiques

The Institute has attempted to obtain the best original copy available for filming. Features of this copy which may be bibliographically unique, which may alter any of the images in the reproduction, or which may significantly change the usual method of filming, are checked below.

L'Institut a microfilmé le meilleur exemplaire qu'il lui a été possible de se procurer. Les détails de cet exemplaire qui sont peut-être uniques du point de vue bibliographique, qui peuvent modifier une image reproduite, ou qui peuvent exiger une modification dans la méthode normale de filmage sont indiqués ci-dessous.

- Coloured covers/  
Couverture de couleur
- Covers damaged/  
Couverture endommagée
- Covers restored and/or laminated/  
Couverture restaurée et/ou pelliculée
- Cover title missing/  
Le titre de couverture manque
- Coloured maps/  
Cartes géographiques en couleur
- Coloured ink (i.e. other than blue or black)/  
Encre de couleur (i.e. autre que bleue ou noire)
- Coloured plates and/or illustrations/  
Planches et/ou illustrations en couleur
- Bound with other material/  
Relié avec d'autres documents
- Tight binding may cause shadows or distortion along interior margin/  
La reliure serrée peut causer de l'ombre ou de la distortion le long de la marge intérieure
- Blank leaves added during restoration may appear within the text. Whenever possible, these have been omitted from filming/  
Il se peut que certaines pages blanches ajoutées lors d'une restauration apparaissent dans le texte, mais, lorsque cela était possible, ces pages n'ont pas été filmées.
- Additional comments:/  
Commentaires supplémentaires:
- Coloured pages/  
Pages de couleur
- Pages damaged/  
Pages endommagées
- Pages restored and/or laminated/  
Pages restaurées et/ou pelliculées
- Pages discoloured, stained or foxed/  
Pages décolorées, tachetées ou piquées
- Pages detached/  
Pages détachées
- Showthrough/  
Transparence
- Quality of print varies/  
Qualité inégale de l'impression
- Includes supplementary material/  
Comprend du matériel supplémentaire
- Only edition available/  
Seule édition disponible
- Pages wholly or partially obscured by errata slips, tissues, etc., have been refilmed to ensure the best possible image/  
Les pages totalement ou partiellement obscurcies par un feuillet d'errata, une pelure, etc., ont été filmées à nouveau de façon à obtenir la meilleure image possible.

This item is filmed at the reduction ratio checked below/  
Ce document est filmé au taux de réduction indiqué ci-dessous.

10X	14X	18X	22X	26X	30X
<input type="checkbox"/>	<input type="checkbox"/>	<input type="checkbox"/>	<input type="checkbox"/>	<input checked="" type="checkbox"/>	<input type="checkbox"/>
12X	16X	20X	24X	28X	32X

The copy filmed here has been reproduced thanks to the generosity of:

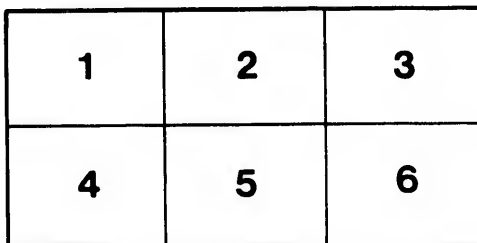
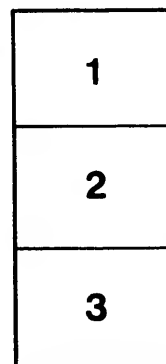
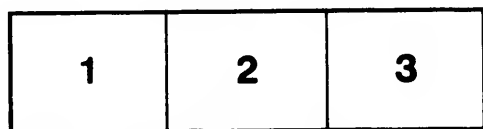
Hamilton Public Library

The images appearing here are the best quality possible considering the condition and legibility of the original copy and in keeping with the filming contract specifications.

Original copies in printed paper covers are filmed beginning with the front cover and ending on the last page with a printed or illustrated impression, or the back cover when appropriate. All other original copies are filmed beginning on the first page with a printed or illustrated impression, and ending on the last page with a printed or illustrated impression.

The last recorded frame on each microfiche shall contain the symbol  $\rightarrow$  (meaning "CONTINUED"), or the symbol  $\nabla$  (meaning "END"), whichever applies.

Maps, plates, charts, etc., may be filmed at different reduction ratios. Those too large to be entirely included in one exposure are filmed beginning in the upper left hand corner, left to right and top to bottom, as many frames as required. The following diagrams illustrate the method:



L'exemplaire filmé fut reproduit grâce à la générosité de:

Hamilton Public Library

Les images suivantes ont été reproduites avec le plus grand soin, compte tenu de la condition et de la netteté de l'exemplaire filmé, et en conformité avec les conditions du contrat de filmage.

Les exemplaires originaux dont la couverture en papier est imprimée sont filmés en commençant par le premier plat et en terminant soit par la dernière page qui comporte une empreinte d'impression ou d'illustration, soit par le second plat, selon le cas. Tous les autres exemplaires originaux sont filmés en commençant par la première page qui comporte une empreinte d'impression ou d'illustration et en terminant par la dernière page qui comporte une telle empreinte.

Un des symboles suivants apparaîtra sur la dernière image de chaque microfiche, selon le cas: le symbole  $\rightarrow$  signifie "A SUIVRE", le symbole  $\nabla$  signifie "FIN".

Les cartes, planches, tableaux, etc., peuvent être filmés à des taux de réduction différents. Lorsque le document est trop grand pour être reproduit en un seul cliché, il est filmé à partir de l'angle supérieur gauche, de gauche à droite, et de haut en bas, en prenant le nombre d'images nécessaire. Les diagrammes suivants illustrent la méthode.

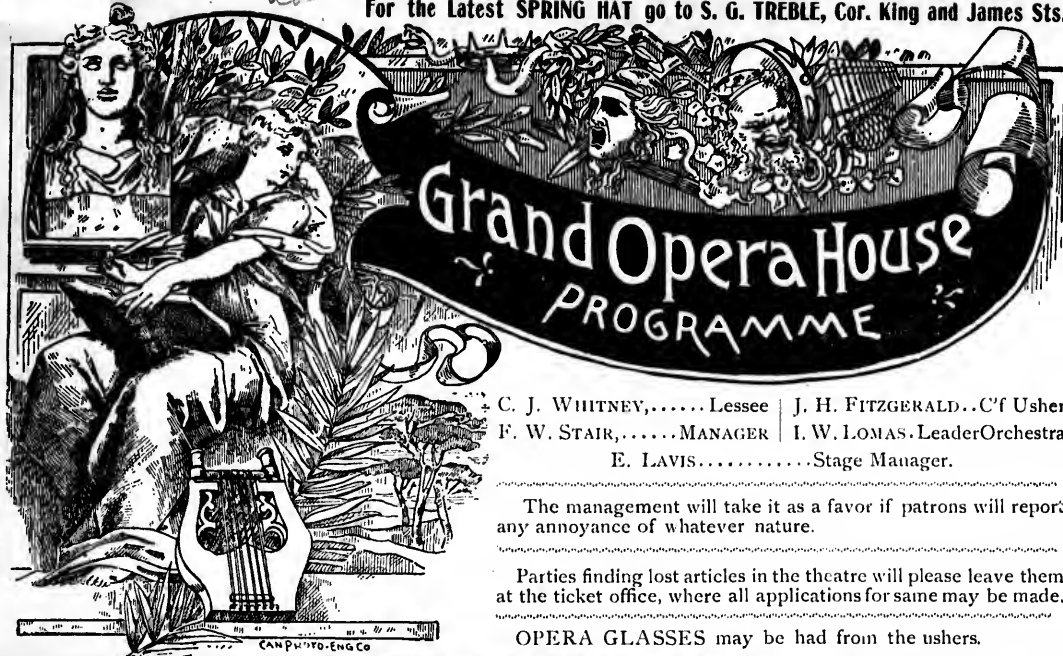
errata  
to

la pelure,  
on à



*Theatre program*

For the Latest SPRING HAT go to S. G. TREBLE, Cor. King and James Sts.



Printed for the Publisher by McPherson & Dingle.

C. J. WHITNEY,.....Lessee | J. H. FITZGERALD...Ct Usher  
 F. W. STAIR,.....MANAGER | I. W. LOMAS...Leader Orchestra  
 E. LAVIS.....Stage Manager.

The management will take it as a favor if patrons will report any annoyance of whatever nature.

Parties finding lost articles in the theatre will please leave them at the ticket office, where all applications for same may be made.

OPERA GLASSES may be had from the ushers.

HAMILTON  
**CONSERVATORY OF MUSIC**  
 AND  
**Orchestral School.**

**C. L. M. HARRIS**  
 Mus. Bac., Director.  
 Corner Hunter and McNab Sts.  
 For terms and particulars apply at the Conservatory.

**CITY HORSESHOEING FORCE**  
 27 John St. North,  
 G. A. COOK, Proprietor.

**SHOEING DONE**  
 ON  
**SCIENTIFIC PRINCIPLES**

Certified member Horseshoers' Protective Association, formed for the protection of the Farriers' art.

**THE ORIGINAL ROYAL LIVERY**  
**BOARDING**  
 AND  
**EXPRESS STABLES**  
 J. LINFOOT, Prop.  
**17-19 REBECCA STREET**  
 High-Class Outfits.

Tuesday, and Sat. Mat., April 19 and 23.

**EUGENIE BLAIR**  
 AND HER OWN COMPANY

....IN....  
**EAST LYNNE**  
 IN FIVE ACTS.  
 DIRECTION OF ROBERT DOWNING.

We wish to call the attention of our patrons to the high class of advertisers in the Grand Opera House Programme, every one of whom can be recommended for the different lines they represent.



OUR CANDIES ARE HIGH GRADE.

**M. KOUBER,**  
 FASHIONABLE  
**HATTER and FURRIER**  
 96 KING ST. WEST.  
 Large Stock of Capes and Collars to be cleared out Cheap.  
 A call solicited. Satisfaction guaranteed.



**W. WILSON & CO.**  
**Tailors.**  
 WE INVITE YOU TO CALL AND INSPECT OUR NEW SPRING IMPORTATIONS.  
**COR. KING AND M<sup>C</sup>NAB STS.**

The Latest in Fall Suitings at I. G. Thomson & Co's, Grand Opera House Block.

**"L & S"**

**HAMS AND BACON**

Are Healthful,  
Delicious, Appetizing.

**Gardner & Thomson**

Have received all the very latest styles in English and American Hats.

OPERA HOUSE CORNER

**WHEN IN TORONTO**

STOP AT THE

  
**Grand Union**  
HOTEL

Opp. Entrance Union Station.

**Calling Cards**

Either  
Lithographed  
or Printed.

ALL THE  
FASHIONABLE  
SIZES.

**J. EASTWOOD & Co**  
19 King Street East.

**MERCHANTS'**  
**Hotel and Restaurant**

(Formerly Temperance Dining Rooms).  
48; James St. North,  
OPPOSITE ALEXANDRA ARCADE.

Everything NEW and up-to-date.  
Good accommodation for Boarders.

**JOHN BOWAN, Proprietor.**  
(Formerly of Victoria Hotel).

**Ladies' . . . .  
Fashionable Hair Dressing.**

Ladies' hair dressed by Madam Mintz a leading artist in this line. All the latest French and American Concert styles.

Constantly in stock—a fine line of real Hair Switches. Hair Combing made up from 20c. per oz. upwards. Appointments made by telephone or at the Hair Dressing Parlors, 2nd floor.

**STANLEY MILLS & CO**  
11, 13 and 15 King Street East.



**Cast of Characters.**

Archibald Carlyle.....	Mr. William Bramwell
Sir Francis Levison.....	Mr. W. B. Downing
Lord Mount Severn.....	Mr. W. B. Arnold
Richard Hare.....	Mr. Edgar Baum
John Dill.....	Mr. Frank Wallace
Officer.....	Mr. William Harmar
Cornelia Carlyle.....	Mrs. Ella Wren
Barbara Hare.....	Miss Linda Downing
Joyce.....	Miss Katherine DeBarry
Wilson.....	Miss Cora Wells
Willie.....	Little Lottie
Lady Isabel }.....	EUGENIE BLAIR
Madam Vine }	

Programme Continued on Fourth Page.

Call on John A. Barr, Royal Drug Hall for newest Perfumes and Toilet requisites.

The Furniture used on the stage is from The London Furniture Mfg Co., Limited, 37 and 39 King street west.

NOTE—The management of this theatre advertises only in the Times and Spectator.

**Devonshire Cream**



Have you ever tasted this toothsome delicacy.

We receive it fresh daily.

You would like it.

**HAZELL & SON,**

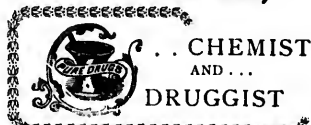
STORES—King and McNab Streets.  
Main and Wentworth Street.

Always be sure to order from your Grocer that high-grade Baking Powder



**THE BEST PEOPLE USE IT.**

**OTTO G. PALM,**



. . . CHEMIST  
AND . . .  
DRUGGIST  
Cor. Hunter and James Sts.  
OPP. T. H. & B. DEPOT.  
PERFUMES, TOILET ARTICLES,  
Prescriptions a Speciality.

**JOHN W. BARTMANN**

*Ladies*

*. . . Tailor*

and . . .

*Habit Maker*

**17 KING WILLIAM STREET**

Quality is the true test of cheapness. GARLAND Stoves and Ranges are no higher in price than other first-class goods, and are superior in many ways.

**Hamilton  
Rug  
Works**



No. 171 York Street.

SOFT TEXTURED, DURABLE AND DECIDEDLY ORIENTAL-LOOKING RUGS CAN BE MADE FROM OLD CARPETS.

SMOKE TUCKETT'S "MARGUERITE" CIGAR.

**SCOTCH AND LITHIA IS ALL RIGHT. SPECIFY SUTHERLAND'S LITHIA IT IS THE BEST.**

1861-1898

**You can rely**  
on anything you buy  
from . . . . .

**THOS. LEES,**  
5 James St. North.

Oldest and most reliable  
Jewelry store in Hamilton.

REPAIRS Executed Promptly.  
... TELEPHONE 23 ...

**LOWE & FARRELL,**

Electric Supplies,  
... Electric Wiring,  
Burglar Alarms, Etc.

No. 40 JAMES ST. SOUTH.

**NEWPORT'S**  
NEW  
**RESTAURANT**

CATERER  
TO THE  
GOVERNOR-GENERAL.

Tables Supplied with the  
best the market affords.

**24 KING STREET WEST**  
Opposite Traders' Bank.

*Young Man,*

If you want a  
... **NOBBY HAT**  
or up-to-date . . . . .  
Furnishings go to

**J. A. MacLENNAN**  
Clothier and Furnisher,  
NO. 58 KING STREET WEST.

When wanting choice  
**Breakfast Bacon**  
or  
**Sugar Cured Hams,**  
Ask for  
**Fearman's**  
"Star Brand."

**ESTABLISHED 1840.**

We have received from the lower provinces a large consign-  
ment of

**CHOICE MAPLE SYRUP AND SUGAR**  
Gallon Cans . . . . \$1.10. Half Gallon Cans . . . . 60 cts.

We have taken the liberty of asking our friends in New  
York "The Franco American Food Co." to send to our custom-  
ers an illustrated booklet, and we hope that they will read this  
catalogue carefully, and find out how these soups are made.

**JAMES OSBORNE & SON**  
The Leading Grocers in the City.  
NOS. 12 AND 14 JAMES ST. SOUTH.

**Coming Attractions!**

Monday, April 25th, '98.

LINCOLN J. CARTER'S  
GREAT SPECTACULAR MELODRAMA,  
ENTITLED  
**THE HEART OF CHICAGO**  
**IMPORTANT!**

By giving a substantial guarantee the management will be  
enabled to secure a return engagement of

**MR. OTIS SKINNER**  
and his talented company in PRINCE RUDOLPH on April  
27th or 28th. A subscription list has been opened at Nord-  
heimers to see if the people of Hamilton want a return en-  
gagement of this great attraction. Price of best seats will be  
\$1.00 instead of \$1.50 for this engagement.

**Be sure and get your name on this list early**

A subscription list is opened at Nordheimer's for the  
appearance here on Wednesday, May 4th, of the famous  
KNEISEL QUARTETTE.

**COMMERCIAL HOTEL** For PARK and YORK Streets.



The Hamilton Cash Register is the  
National Cash Register, with all the latest  
improvements up to date, and manufac-  
tured by THE HAMILTON BRASS  
MANUFACTURING CO., Limited, Ham-  
ilton, Ont.

**Wm. Heinhold & Son**



Have moved from 25 York Street to  
**117 PARK STREET NORTH**

Where customers can have fur work  
attended to at very moderate prices.  
Address of store for fall and winter's  
business will be advertised when  
suitable premises have been secured.

**Wm. Heinhold & Son,**  
117 Park Street North.

**PONG WAH LEE,**  
95 James St. North,  
Opp. Grand Opera House.

**LAUNDRY**

First-Class Work  
Goods Called For and Delivered

**GEO. E. WALLER,**  
Importer of the  
"Most Excellent"  
**Chocolate and**  
**BonBon Mixture**  
Opp. Alexandra Arcade.



922  
AUG 1 1932

D. T. Baxter, Dentist, Opera House Corner, Best Sets of Teeth \$8.00. Painless Extracting.

For first-class  
**PHOTOGRAPHS**  
at moderate prices  
go to ★★★★★  
**LEATHERDALE'S**  
Photo Parlors,  
147½ King St. East.

**HINMAN & Co.**  
COR. KING AND JOHN STREETS.

The Leading ★★★★★  
Millinery House of Hamilton.

Our Dressmaking Department is assum-  
ing important proportions, under the able  
direction of Miss Murray, formerly of  
Toronto.

**BEING A DIRECT IMPORTER**



places me in a position to  
give you the very choicest of  
goods at prices which save  
for you the usual middle-  
man's profit.

★ ★ ★  
**R. S. FRASER,**  
Merchant Tailor, 46 James St. North.  
★ ★ ★  
**JOHN R. RULE, Cutter.**

**THE BELL**  
**ORGAN AND PIANO CO.**

★★★★  
44  
JAMES ST.  
NORTH.  
44  
★★★★

OUR PIANOS are finished in  
the highest styles of antique  
oak, burr walnut, rosewood and  
ebony.

OUR ACTIONS are made by  
the best American makers,  
and are unequalled for brilliancy  
and lasting power. Every piano  
warranted for five years and  
every organ for six years.

Pianos and Organs Tuned and Repaired  
by Skilled Workmen.

**SMALL MUSICAL GOODS.**  
We have a large assortment of Violins, Guitars,  
Banjos, Mandolins, Accordions, Concertinas, etc.  
Fittings for every musical instrument always  
in stock.  
We carry the Largest Stock of General Musical  
Goods in the city, and our prices will be found  
the lowest.

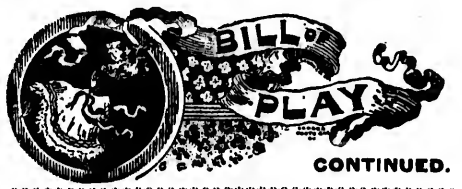
**R. O. & A. B. Mackay,**  
WHOLESALE AND RETAIL  
DEALERS IN  
**ANTHRACITE AND BITUMINOUS**

**COAL**  
.. AND ..  
**Portland Cement.**  
OFFICE-MCKAY'S WHARF,  
Foot James Street.

**BANK OF HAMILTON**  
Capital ..... \$1,250,000. Reserve ..... \$725,000  
Total Assets, \$10,000,000.

Head Office: Cor. King and James Streets.  
NORTH END BRANCH..... CORNER JAMES AND BARTON STREETS  
EAST END BRANCH..... CORNER KING AND WELLINGTON STREETS

General Banking Conducted.  
Savings Bank at all offices.



**SYNOPSIS**

ACT I—The Arrival. (Six years elapse be-  
tween Acts I and II.)  
ACT II—The Elopement.  
ACT III—The Separation.  
ACT IV—Madam Vine.  
ACT V—Until Eternity.

**Executive Staff.**  
Mr. Henri Gressitt ..... Business Manager  
Mr. William Proctor ..... Treasurer  
Mr. Frank Wallace ..... Stage Manager

THE OPERA HOUSE ORCHESTRA will perform the  
following selections during the evening:

\*Two Step..... Hannah's Promenade  
Waltzes..... Larrisesa  
The Indian Sun Dance.....  
Polka..... Grazia  
Mazurka..... Little Flossie

\*This Two Step is put up by Willis Woodward & Co, 842 Broadway,  
New York. Can be had at Nordheimers'.  
Opera patrons will find Barr's Hot Soda very refreshing.  
Try it. Royal Hotel Block.

The Nordheimer Piano is used in this theatre.

Go to **MORROW**  
FOR FIRST-CLASS  
PHOTOGRAPHY  
Take a Peep at our Window.  
KING STREET EAST OPP. POST OFFICE

EXPERTS . . . .  
EMPLOYED IN  
EVERY . . . .  
DEPARTMENT.

**Silver**  
Cleans .....  
Everything. **Dust**

Makes the Drudgery of Kitchen  
work a Pleasure.

**EASY AND QUICK**  
ALL GROCERS.

**TOLTON & McKAY**  
41 James St. North.  
★★★★

Those Shirtings we have been  
telling you about are in.  
**Call and See Them.**

They will do your eyes good. They  
are the product of the largest and best  
mills in Great Britain. The material is  
the best and the patterns exclusive.

**Webb's 300 Patterns,**  
Comprising Oxfords, Zephyrs, Madras,  
French Cambrics, Ceylon Flannel, and  
Silk Shirtings.

We are the largest Custom Shirt  
Tailors in Ontario, and carry a choice  
new and select range of  
**Men's Fine Furnishings.**

**Heintzman & Co**  
**Pianofortes**

are pronounced by the most  
eminent musicians to exem-  
plify the highest standard of  
art in Piano manufacture.

Over 13,000 are in daily use  
in Canadian homes.

HAMILTON WAREROOMS:  
**Corner James and  
King William Streets.**

**Schmidt**  
House 61  
JAMES ST. NORTH

Schmidt & Langhorn, Props.  
The Finest Brands of Liquors and Cigars.  
Hard Boiled Eggs.  
Ham, Swiss and Limburger Sandwiches.  
Hot Pies and Wafelwurst.



