

**CIHM  
Microfiche  
Series  
(Monographs)**

**ICMH  
Collection de  
microfiches  
(monographies)**



**Canadian Institute for Historical Microreproductions / Institut canadien de microreproductions historiques**

**© 1996**

## Technical and Bibliographic Notes / Notes technique et bibliographiques

The Institute has attempted to obtain the best original copy available for filming. Features of this copy which may be bibliographically unique, which may alter any of the images in the reproduction, or which may significantly change the usual method of filming are checked below.

- Coloured covers /  
Couverture de couleur
- Covers damaged /  
Couverture endommagée
- Covers restored and/or laminated /  
Couverture restaurée et/ou pelliculée
- Cover title missing / Le titre de couverture manque
- Coloured maps / Cartes géographiques en couleur
- Coloured ink (i.e. other than blue or black) /  
Encre de couleur (i.e. autre que bleue ou noire)
- Coloured plates and/or illustrations /  
Planches et/ou illustrations en couleur
- Bound with other material /  
Relié avec d'autres documents
- Only edition available /  
Seule édition disponible
- Tight binding may cause shadows or distortion  
along interior margin / La reliure serrée peut  
causer de l'ombre ou de la distorsion le long de  
la marge intérieure.
- Blank leaves added during restorations may appear  
within the text. Whenever possible, these have  
been omitted from filming / Il se peut que certaines  
pages blanches ajoutées lors d'une restauration  
apparaissent dans le texte, mais, lorsque cela était  
possible, ces pages n'ont pas été filmées.
- Additional comments /  
Commentaires supplémentaires:

L'Institut a microfilmé le meilleur exemplaire qu'il lui a été possible de se procurer. Les détails de cet exemplaire qui sont peut-être uniques du point de vue bibliographique, qui peuvent modifier une image reproduite, ou qui peuvent exiger une modifications dans la méthode normale de filmage sont indiqués ci-dessous.

- Coloured pages / Pages de couleur
- Pages damaged / Pages endommagées
- Pages restored and/or laminated /  
Pages restaurées et/ou pelliculées
- Pages discoloured, stained or foxed /  
Pages décolorées, tachetées ou piquées
- Pages detached / Pages détachées
- Showthrough / Transparence
- Quality of print varies /  
Qualité inégale de l'impression
- Includes supplementary material /  
Comprend du matériel supplémentaire
- Pages wholly or partially obscured by errata  
slips, tissues, etc., have been refilmed to  
ensure the best possible image / Les pages  
totalement ou partiellement obscurcies par un  
feuillet d'errata, une pelure, etc., ont été filmées  
à nouveau de façon à obtenir la meilleure  
image possible.
- Opposing pages with varying colouration or  
discolourations are filmed twice to ensure the  
best possible image / Les pages s'opposant  
ayant des colorations variables ou des décolorations  
sont filmées deux fois afin d'obtenir la  
meilleure image possible.

This item is filmed at the reduction ratio checked below/  
Ce document est filmé au taux de réduction indiqué ci-dessous.

	10X	12X	14X	16X	18X	20X	22X	24X	26X	28X	30X	32X
					✓							

The copy filmed here has been reproduced thanks to the generosity of:

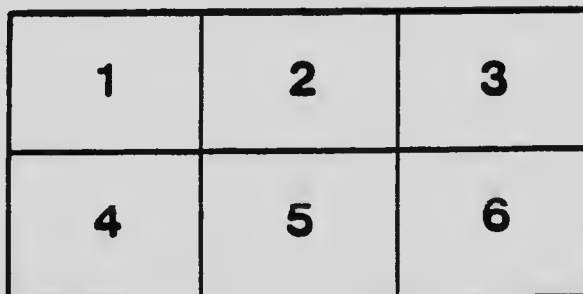
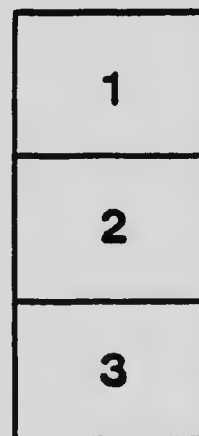
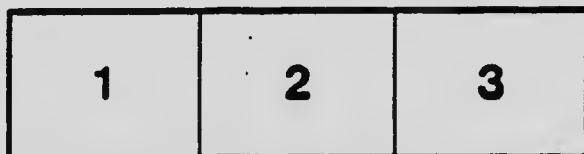
National Library of Canada

The images appearing here are the best quality possible considering the condition and legibility of the original copy and in keeping with the filming contract specifications.

Original copies in printed paper covers are filmed beginning with the front cover and ending on the last page with a printed or illustrated impression, or the back cover when appropriate. All other original copies are filmed beginning on the first page with a printed or illustrated impression, and ending on the last page with a printed or illustrated impression.

The last recorded frame on each microfiche shell contains the symbol  $\rightarrow$  (meaning "CONTINUED"), or the symbol  $\nabla$  (meaning "END"), whichever applies.

Maps, plates, charts, etc., may be filmed at different reduction ratios. Those too large to be entirely included in one exposure are filmed beginning in the upper left hand corner, left to right and top to bottom, as many frames as required. The following diagrams illustrate the method:



L'exemplaire filmé fut reproduit grâce à la générosité de:

Bibliothèque nationale du Canada

Les images suivantes ont été reproduites avec le plus grand soin, compte tenu de la condition et de la netteté de l'exemplaire filmé, et en conformité avec les conditions du contrat de filmage.

Les exemplaires originaux dont la couverture en papier est imprimée sont filmés en commençant par le premier plat et en terminant soit par la dernière page qui comporte une empreinte d'impression ou d'illustration, soit par le second plat, selon la cas. Tous les autres exemplaires originaux sont filmés en commençant par la première page qui comporte une empreinte d'impression ou d'illustration et en terminent par la dernière page qui comporte une telle empreinte.

Un des symboles suivants apparaît sur la dernière image de chaque microfiche, selon le cas: le symbole  $\rightarrow$  signifie "A SUIVRE", le symbole  $\nabla$  signifie "FIN".

Les cartes, planches, tableaux, etc., peuvent être filmés à des taux de réduction différents. Lorsque le document est trop grand pour être reproduit en un seul cliché, il est filmé à partir de l'angle supérieur gauche, de gauche à droite, et de haut en bas, en prenant le nombre d'images nécessaire. Les diagrammes suivants illustrent la méthode.

# MICROCOPY RESOLUTION TEST CHART

(ANSI and ISO TEST CHART No. 2)



**APPLIED IMAGE Inc**

1653 East Main Street  
Rochester, New York 14609 USA  
(716) 482 - 0300 - Phone  
(716) 288 - 5989 - Fax



*Designed for*  
**FARMERS MECHANICS  
MERCHANTS AND ALL PEOPLE**

RM671

AI

P38

No. 14

Res.

## **Fifty Years of Splendid Service in Expert Diagnosis and Correct Treatment of Chronic Diseases under Ideal Conditions**



**Invalids' Hotel and Surgical Institute  
in the heart of Buffalo, N.Y.**

and vibratory machines and all the most modern apparatus for every sort of specialized treatment.

For terms write Invalids' Hotel, 665 Main St., Buffalo, N.Y.

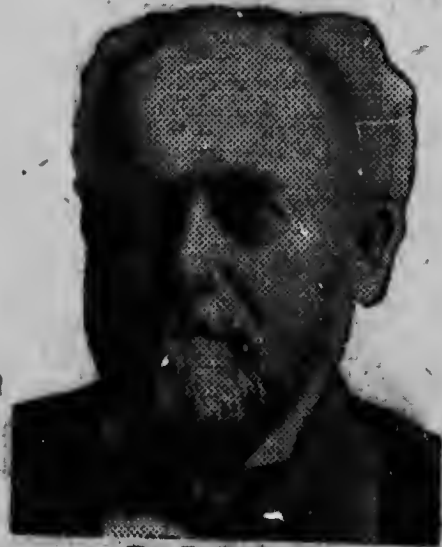
The Invalids' Hotel, established by Dr. Pierce, is justly celebrated as a haven for the afflicted, who come here in ever increasing numbers from every state, from Canada and even from foreign lands.

This institution has a completely organized staff of skilled diagnosticians, specialists, analysts, surgeons and competent nurses. However, it has none of the depressing atmosphere of the usual hospital or sanitarium. It is a real hotel, pleasantly located in the centre of the city with large, well-ventilated, high ceilinged rooms, elegant furnishings, best of dining service and constant attendance of experienced male and female nurses.

Turkish or electric baths, X-Ray, High Frequency Current, Mechanical Movement

# HALF A CENTURY OF SUCCESS

Story of Two Great Institutions Founded  
by Father; Built up by Son



DR. R. V. PIERCE

Invalids' Hotel at Buffalo, N.Y., a great modern scientific hospital where through years of experience in countless cases of every known disease, diagnosis and special advice by mail have been systematized to the last degree.

Everybody has heard of my father, the late

We have helped thousands to find better health.

Is there any obstinate illness in your family? If so, I want to help YOU. My offer is backed

with all the splendid facilities of the World's Dispensary Medical Association and of the In-

Dr. Ray V. Pierce, whose Favorite Prescription and Golden Medical Discovery have been used all over this country for more than fifty years. As a practicing physician in Pennsylvania, Dr. Pierce had won a reputation, early in his career, for curing difficult cases. Later, taking the two prescriptions which had been outstanding features in his success, he moved to Buffalo, N.Y., dropped his family practice and began to make these two remedies for general use. He also established Dr. Pierce's Invalids' Hotel and Surgi-

(Continued on page 2)

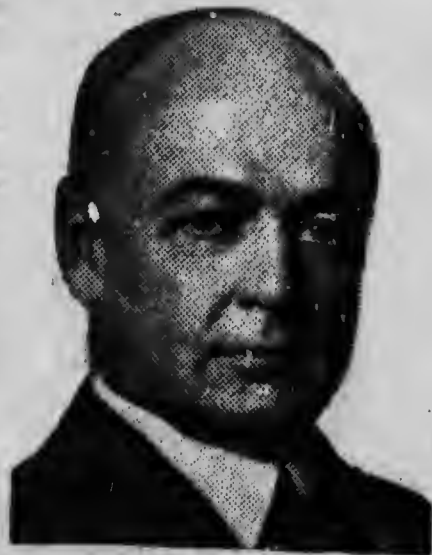
## Contents

Contents of Fields and Lots.....	Page 3.
To Measure Hay, Wood, Lumber, etc.	" 4
Seed to the Acre.....	" 6
Corn and Hogs, Silage.....	" 8
Weight of Live Cattle.....	" 10
Covering Capacity of Shingles.....	" 12
First Aid to Injured.....	"14-20
To Remove Paint Spots.....	" 14
Antidotes for Poison.....	" 24
Weights and Measures.....	"26-28
Stone and Brick Walls.....	" 28
When to Plant Seeds.....	" 19
Capacity of Cisterns.....	" 22

cal Institute, to which, for many years, sufferers from all over the United States have come, seeking the skilled, scientific treatment for which this Institute has become so famous.

By establishing this hospital, with a full staff of specialists, surgeons, chemists and trained nurses, Dr. Pierce recognized the need of special cases, but he never lost sight of the great need of the masses of people, especially in the rural districts, for home remedies ready to use for simply-treated common ailments, and he gradually added other successful formulae to the Dr. Pierce line of family remedies.

I, V. M. Pierce M.D., eldest son of Dr. R. V. Pierce, brought up in this medical atmosphere was graduated from Buffalo and Harvard Universities, and when my father died, was fully equipped to take up the direction of the World's Dispensary Medical Association and of the Invalids' Hotel, and these institutions have been my life work. Knowing the vast amount of harm wrought by diseases of the kidneys and having had the opportunity to observe the analyses and the successful methods of treatment in thousands of cases of kidney trouble at the Invalids' Hotel, I have recently given to the public the latest and perhaps the most important of the Dr. Pierce's home remedies—An-uric (anti-uric-acid) Tablets, which I now recommend to those who suffer with kidney backache, irregularity of urination and the pains and disturbances that come from excess of uric acid in the blood. An-uric is sold by all good druggists in Canada. If you wish a trial package, send 10c. to Dr. Pierce's Laboratory in Bridgeburg, Ont.



Yours for feeling better,

DR. V. M. PIERCE.



## MEASUREMENT OF LAND

Sixteen and one-half feet, one rod; 3 rods, one mile; 66 feet, one chain; 80 chains, one mile; 5,280 feet, one mile; 43,560 square feet, one acre; one mile square, 640 acres; 660 feet square, 10 acres; 208 feet 8½ inches square, one acre; 933 feet 4½ inches square, 25 acres; 260 fence rails, 16½ feet long, five rails high, will enclose an acre field.

### Contents of Fields and Lots

The following tables will assist in making an accurate estimate of the amount of land in different fields:

#### One Acre

10 rods x 16 rods	120 feet x 163 feet
8 rods x 20 rods	240 feet x 181½ feet
5 rods x 32 rods	20 yards x 242 yards
4 rods x 40 rods	40 yards x 121 yards
5 yards x 968 yards	80 yards x 60½ yards
10 yards x 484 yards	70 yards x 69½ yards
110 feet x 369 feet	220 feet x 198 feet
60 feet x 726 feet	440 feet x 99 feet
200 x 108 9-10 feet make.....	½ an acre.
100 x 45 1-5 feet make.....	1/3 an acre.
100 x 108 9-10 feet make.....	¼ an acre.

### Number of Trees on an Acre

4 feet apart....	2,720	15 feet apart....	200
5 feet apart....	1,749	18 feet apart....	135
6 feet apart....	1,200	20 feet apart....	110
8 feet apart....	689	22 feet apart....	70
10 feet apart....	430	30 feet apart....	50
12 feet apart....	325		

### Washes

*For Outside Woodwork.*—In a tight bushel, slack half a bushel of fresh lime by pouring over it boiling water sufficient to cover it four or five inches deep; stir until slack; add two pounds of sulphate of zinc dissolved in water; add water enough to bring all to the consistency of thick whitewash.

*For Brick or Stone Work.*—Slack one-half bushel of lime, as before, in a barrel; then fill the barrel two-thirds full of water and add a bushel of hydraulic cement; add three pounds sulphate of zinc dissolved in water. These washes may be colored by adding powdered ochre, umber, etc.

*For Inside Work.*—Add two quarts of thin size to a pailful of wash just before using. The common practice of mixing salt with whitewash should not be permitted.

Surveying without Board Rule

Lumber

- 1 in. thick—1-12 the length multiplied by width.
- 2 in. thick—1-6 the length multiplied by width.
- 3 in. thick— $\frac{1}{4}$  the length multiplied by width.
- 4 in. thick—1-3 the length multiplied by width.
- 5 in. thick—5-12 the length multiplied by width.
- 6 in. thick— $\frac{1}{2}$  the length multiplied by width.
- 7 in. thick—7-12 the length multiplied by width.
- 8 in. thick—2-3 the length multiplied by width.
- 9 in. thick— $\frac{3}{4}$  the length multiplied by width.
- 10 in. thick—5-6 the length multiplied by width.
- 11 in. thick—11-12 the length multip' d by width.
- 12 in. thick— - the length multiplied by width.

This gives contents in feet.

*To Measure Hay in Mow.*—Multiply the length in feet by the height in feet and this by the width in feet. Divide the result by 500. This will give the number of tons.

*To Measure Hay in Square or Oblong Stack.*—Multiply the length in feet by width in feet and this by one-half the height. Divide result by 300. This will give the number of tons.

*To Measure Hay in Round Stacks.*—Multiply square of distance around stack in yards by four

times the height in yards. Point off two figures from the right and divide the remainder by 20. The result is the number of tons in stack.

*To Measure Wood.*—Multiply the length in feet by the width in feet and this by the height in feet. Divide this product by 128. This will give the number of cords. A common cord of firewood is eight feet long, four feet high and four feet wide. As railway, steamboat and other corporations have demanded more than four feet high for a cord, because of the openings between the sticks, caused by careless piling, it is well always in contracts to specify the height of cord. Some companies ask 8 x 4 x 5 feet for a cord; this is 160 feet instead of 128.

*To Measure a Pile of Wheat.*—In a round heap or pile, multiply the diameter in feet by itself. Then multiply this by the height in feet and divide by four. This will give the number of bushels approx. ately.

*To Measure Casks, Barrels, etc.*—Add together diameters at head and bung in inches and divide the result by two. Multiply this result by itself, and this product by the height in inches. Multiply this last result by eight and cut off the right

(Continued on page 6)

**Anuric, the Result of 50 years of Analyses  
in a Great Hospital**

Fifty years ago, my father established the famous Invalids' Hotel at Buffalo, N.Y., surrounding himself with a staff of skilful physicians, surgeons and chemists. To this great institution comes a steady stream of patients.

A great percentage of these patients are affected with kidney disease and many other thousands of kidney sufferers who do not come for treatment send samples for analysis.

So, here at the Invalids' Hotel, diagnosis and treatment of kidney trouble has been going on incessantly for fifty years.

Realizing the great need for an effective home remedy to correct kidney troubles in their early stages, I put our staff to work on the problem. In time they worked out an ideal formula, which, it was found, could be put up in tablet form.

I named this remedy An-uric, because by strengthening the eliminative action of the kidneys, it works to free the sufferer from the evil effects of uric acid upon the nerves and joints.

An-uric is made in our Laboratory in Bridgeburg, Ont., and is sold by all good druggists.

Dr. V. M. Pierce, *President*, Invalids' Hotel.

**KIDNEY TROUBLE?**

**Your Good Health and Long Life Depend  
on Your Kidneys. That is why Insurance  
Companies Insist Upon Urinalysis**

Niagara Falls, Ont.

—“I have used nearly all of Dr. Pierce's medicines and take great pleasure in giving them a boost. The Anuric Tablets are the greatest benefit to mankind. I was suffering with kidney trouble and was rejected by different insurance companies. To-day I am holding three good policies. All I ask the readers of this is to give the Anuric Tablets a trial, and become a life user in the future.”



WILLIAM DEMPSEY

William Dempsey, 52 Bridge St., Niagara Falls.

(Continued from page 4)

hand figure. You have now the contents in cubic inches. Divide by 231 and you have common gallons. Divide by 268.8 and you have standard gallons. Divide by 2150.0 and the result is bushels.

*Size of Bins Required.*—Any number of bushels (wheat measure) increased by one-quarter their number will give the number of cubic feet required to hold same.

*To Find Weight of Wooden Beams, Joists, etc.*—Multiply length in feet by breadth in inches and depth in inches, and divide the product by one of these divisors: For elm, 2.92; yellow pine, 2.82; white pine, 2.47; dry oak, 4.04.

*Wagon Boxes, Bins, etc.*—Multiply length by width, then multiply by height (reducing measurements to inches). Divide this result by 2150.42. This will give you the exact capacity in bushels, wheat measure.

### SEED TO THE ACRE

The opinions of farmers differ materially, and then the climate and soil have much to do with the quantity. The quantity of seed sown broadcast to the acre is about as follows:

Wheat.....	1¼ to 2	bu.
Barley.....	1½ to 2½	bu.
Oats.....	2 to 4	bu.
Rye.....	1 to 2	bu.
Buckwheat.....	¾ to 1½	bu.
Millet.....	1 to 1½	bu.
Indian Corn.....	1 to 2	bu.
Beans.....	2 to 3	bu.
Peas.....	2½ to 3½	bu.
Hemp.....	1 to 1½	bu.
Flax.....	½ to 2	bu.
Timothy.....	12 to 24	qt.
Mustard.....	8 to 20	qt.
Redtop.....	12 to 16	qt.
Flat Turnip.....	2 to 3	lb.
Red Clover.....	10 to 16	lb.
White Clover.....	3 to 4	lb.
Kentucky Blue Grass.....	10 to 15	lb.
Orchard Grass.....	20 to 30	lb.

The quantity per acre, when planted in rows, in drills, is about thus:

Broomcorn.....	1 to 1½	bu.
Beans.....	1½ to 2	bu.
Peas.....	1½ to 2	bu.
Peanuts.....	1 to 2	bu.

(Continued on page 8)

## STOP THAT COUGH!

After Grippe or a bad cold an irritating cough usually follows. That tiresome throat tickle prevents sleep and you cough until worn out, and when you go to church or the "movie" or theatre, just as everything is quiet comes the throat tickle, you can't suppress it, and you choke and cough as your neighbors glare at you. Relief is at hand! Dr. Pierce's Golden Medical Discovery will relieve the cough and restore health and strength.

Woodstock, Ont.—"My husband always speaks a good word for Dr. Pierce's Golden Medical Discovery and we both feel that he owes his present good health to this splendid medicine. Bronchial pneumonia, as a child, left him with chronic bronchial trouble and it just kept getting worse every year even though he doctored and tried every remedy recommended to him. Some nights he would cough so hard I used to be afraid he might die before morning. Last fall his mother advised him to try the 'Golden Medical Discovery' and from the first few doses he improved. It is just a year now and he seems to be entirely cured of all bronchial ailments."—Mrs. S. M. Greer, 27 Sydenham St.

## HAVE YOU A FAMILY? HERE'S GOOD ADVICE FOR ALL

Alport, Ont.—  
"I have much pleasure in testifying to the efficacy of Dr. Pierce's Golden Medical Discovery which I have used in my family of nine children for over forty years. I have no hesitation in pronouncing it to be the best proprietary medicine of which I have any knowledge for building up the body and keeping it in good order, if taken according to the directions, together with Dr. Pierce's Pleasant Purgative Pellets. I am convinced that there is no better tonic."—H. F. Bickmore.



H. F. BICKMORE

Dr. Pierce's Medicines can be mailed you in tablet form if not at Drug Store

(Continued from page 6)

Onions.....	4	to 5	lb.
Carrots.....	2	to 2½	lb.
Parsnips.....	4	to 5	lb.
Beets.....	4	to 6	lb.

**Corn and Hogs**

A bushel of corn will make 10½ pounds of pork, gross. Then:

<i>When Corn Costs:</i>	<i>Pork Costs:</i>
\$ .12½ per bushel.....	\$ .01½ per lb.
.17 per bushel.....	.02 per lb.
.25 per bushel.....	.03 per lb.
.35 per bushel.....	.04 per lb.
.42 per bushel.....	.05 per lb.
.50 per bushel.....	.06 per lb.

**Miscellaneous Weights**

Bbl. Flour weighs.....	196	pounds
Bbl. Salt weighs.....	280	pounds
Bbl. Beef weighs.....	200	pounds
Bbl. Pork weighs.....	200	pounds
Bbl. Fish weighs.....	200	pounds
Keg Powder.....	25	pounds
Stone of Lead or Iron.....	14	pounds
Pig Lead or Iron.....	21½	stone

Anthracite coal, broken, cubic foot averages 54 lbs.

A ton, loose, occupies 40 to 43 cubic feet.

Bituminous coal, broken, cubic foot, averages 49 lbs.

A ton, loose, occupies 43 to 48 cubic feet.

**Amount of Silage Fed Per Day***Kinds of Stock**Daily Ration,*

Beef Cattle:—

*Pounds*

Wintering Calves, eight months old 15 to 25

Wintering Breeding Cows..... 30 to 50

Fattening Beef Cattle, 18-22 months old:—

First stage of fattening..... 20 to 30

Latter stage of fattening..... 12 to 30

Dairy Cattle..... 30 to 50

Sheep:—

Wintering Breeding Sheep..... 3 to 5

Fattening Lambs..... 2 to 3

Fattening Sheep..... 3 to 4

**Rules of Health**

One of the most important aids to health generally, and to correct intestinal inactivity in particular, is regular exercise, including breathing exercises.

(Continued on page 10)

Have You a Daughter? If You Have,  
This Article Will Interest You!



MRS. SARAH WILSHAW

Hamilton, Ont.  
—"Dr. Pierce's Favorite Prescription is the best medicine I have ever known for the building up of girls and women who are run-down in health. It has been taken by different members of my family with great success. My daughters have been wonderfully helped during motherhood by taking Favorite Prescription; it is the best medicine the expectant mother can take for health and strength. And my granddaughter's health was completely restored by its use."—Mrs. Sarah Wilshaw, 405 Cannon St., E.

SPARKLING EYES FOLLOW  
GOOD HEALTH



MRS. ROSE CRAIG

Toronto, Ont.  
—"From the time of my earliest girlhood I had always heard my mother speak in highest praise of Dr. Pierce's Favorite Prescription for women's ailments, so it is not at all strange that after I married and had backaches, nervous spells and other disorders that I should remember what my mother had always said of this Prescription, and I found it relieved me of my aches, pains and nervousness."—Mrs. Rose Craig, 257 Sackville St.

Why not write to Dr. Pierce and his Faculty?

(Continued from page 8)

Attention should be given by all who suffer from constipation to its causes as well as to its far-reaching effects when neglected. Take Dr. Pierce's Pleasant Pellets.

### Weight of Live Cattle

For cattle of a girth of from five to seven feet allow 23 pounds to the superficial foot. For a girth of from seven to nine feet allow 31 pounds to the superficial foot. For small cattle and calves of a girth from three to six feet allow 16 pounds to the cubic foot. For pigs, sheep, and animals measuring less than three feet girth allow 11 pounds to the superficial foot. The following is the established system respecting measurement and weight of cattle:

*Rule.*—Measure the girth in inches back of the shoulder, and the length in inches from the square of the buttock to a point even with the point of the shoulder blade. Multiply the girth by the length and divide the product by 144 for the superficial feet, and then multiply the superficial feet by the number of pounds allowed as for cattle of various girth, and the product will be the number of pounds of beef, veal or pork in the four quarters of the animal.

Girth	Length	Renton's Table Lbs.	Cary's Table Lbs.
5 ft. 0 in.	3 ft. 6 in.	294	294
5 ft. 0 in.	4 ft. 0 in.	324	324
5 ft. 6 in.	3 ft. 9 in.	378	378
5 ft. 6 in.	4 ft. 0 in.	380	383
6 ft. 0 in.	4 ft. 6 in.	430	433
6 ft. 0 in.	5 ft. 0 in.	603	602
6 ft. 6 in.	4 ft. 6 in.	639	637
6 ft. 6 in.	4 ft. 9 in.	672	672
7 ft. 0 in.	5 ft. 6 in.	902	903
7 ft. 0 in.	6 ft. 0 in.	985	983
8 ft. 0 in.	6 ft. 6 in.	1,394	1,398
8 ft. 0 in.	7 ft. 0 in.	1,503	1,504

### Strength of Ice

A thickness of two inches will allow the passage of men in single file on a line of planks placed on the ice. No other row of planks should be placed nearer than six feet.

A thickness of five inches will allow the passage of cavalry carts, or light guns with a moderate interval between each.

(Continued on page 12)



## YOUR GOOD HEALTH AND LONG LIFE DEPEND ON YOUR KIDNEYS

The woman who bears and rears children, does her own housework, keeps chickens and has other outside work to do, needs a sound back to carry her burden of toil. So does the farmer, who has to work early and late, and to do much bending and lifting.

Unfortunately, it is a fact that more farm men and women than other people suffer with lame or aching backs, and it is a trouble that allows hardly a moment's peace, day or night.

Chronic backache is very often due to weak kidneys and for kidney trouble, Dr. Pierce has worked out a new and special remedy, An-uric.

An-uric, by increasing the flow of the urine, helps the kidneys to flush out of the system the uric poisons that cause the damage to the kidneys and bladder, the aching back, swollen joints and many aches and pains that are ordinarily called rheumatism. This Anuric is for sale in all drug stores, or send 10 cents to Doctor Pierce's Laboratory in Bridgeburg, Ont., for trial package. Write Dr. Pierce, President of the Invalids' Hotel, Buffalo, N. Y., for free medical advice.

Brantford, Ont.  
—"I take the greatest pleasure in recommending Dr. Pierce's Anuric Tablets to all sufferers of kidney and bladder ailments. Four years ago I first learned the value of the Anuric Tablets.



Mrs. FRANCIS STONE

I had suffered severely with backaches and my bladder was giving me considerable inconvenience, when I was advised to try Dr. Pierce's Anuric Tablets, and I obtained almost immediate relief.

—Mrs. Francis Stone, 42 Grey St.

(Continued from page 10)

A thickness of six inches will allow the passage of wagons drawn by horses, etc.

A thickness of 10 to 12 inches will support the heaviest loads ever likely to pass over it.

#### Horse Stalls

Widths, three feet ten inches to four feet, or else five feet or over in width; nine feet long. The width should never be between four and five feet, as in that case the horse is liable to cast himself.

*To Measure Hay in Cubic Feet.*—A ton is 512 cubic feet in the mow, that is, when it has settled down and become solid.

#### Shingles

The best shingles are of white cedar. When of good quality, they will last forty to fifty years in our Northern country. Cypress and white pine are much used for shingles, but will not last half as long as white cedar.

Shingles are packed 250 to the bundle, or four bundles to 1,000.

One bundle 16-inch shingles will cover 30 square feet.

One bundle 18-inch shingles will cover 33 square feet.

When laid  $5\frac{1}{2}$  inches to the weather, five

pounds 4d. or  $3\frac{3}{4}$  pounds 3d. nails will lay 1,000 shingles.

#### Covering Capacity of Shingles

Average size of shingles—4 x 16 inches—is taken as a basis of calculation.

One hundred square feet will require, laid four inches to the weather, 900.

One hundred square feet will require, laid four and one-half inches to the weather, 800.

One hundred square feet will require, laid five inches to the weather, 720.

Three and one-half pounds of four-penny nails are required for laying 1,000 shingles.

Five to ten per cent. should be added to these figures for waste and shortage.

#### Cubic or Solid Measure

*For All Bodies Having Length, Width and Thickness*

1,728 cubic inches make . . . . .	1 cubic foot
27 cubic feet make . . . . .	1 cubic yard
128 cubic feet make . . . . .	1 cord (wood)
40 cubic feet (shipping) make . . . . .	1 ton
2,150.42 cubic inches make . . . . .	1 stand. bush.
268.82 cubic inches make . . . . .	1 stand. gal.
231 cubic inches make . . . . .	1 com'n gal.
1 cubic foot makes . . . . .	4-5 of a bush.

(Continued on page 14)

### ARE YOU A NERVOUS WOMAN?

Are your nerves strong? Does your work get on your nerves? Do your children set your nerves on edge? Do not become discouraged, relief is in sight. What you need is Dr. Pierce's Favorite Prescription, a medicine adapted to the weaknesses of women, containing no alcohol, made of herbs the Indians knew about years ago. Thousands of homes for fifty years have known the value of Doctor Pierce's medicines and many testimonials to their worth come unsolicited.

St. Thomas, Ont.—“Dr. Pierce's Favorite Prescription is the best medicine I have ever taken for ills peculiar to women. I was all run-down and in a very nervous state; had a draggy and worn-out feeling, backache and pains through my sides. I was in miserable health when I began taking Dr. Pierce's Favorite Prescription and it completely relieved me of all my weakness and I have not suffered any distress or discomfort at any time since and my general health has been much better.”—Mrs. Mary O'Sullivan, 30 Chester St.

### A MESSAGE TO CANADIAN WOMEN

Barrie, Ont.—

“I was suffering from a run-down system some time ago, was unfit to perform my daily duties, and was advised to try Dr. Pierce's Favorite Prescription. I tried it, took two bottles, and was restored to my natural strength. I cannot praise Dr. Pierce's medicine too highly and will be willing to write to any one sending stamp & envelope.”



Mrs. A. H. Bishop

Mrs. A. H. Bishop, R.R. No. 3, c/o D. A. Lowery.

Write Dr. Pierce, President Invalids' Hotel, in Buffalo, N.Y., if you desire free medical advice.

Dr. Pierce's Favorite Prescription Tablets mailed direct, on request—85 cents

(Continued from page 12)

**Surveyor's or Land Measure**

7.92 inches make.....	1 link
25 links make.....	1 rod
4 rods make.....	1 chain
10 square chains make.....	1 acre
160 square rods make.....	1 acre
640 acres make.....	1 square mile
36 square miles make.....	1 township

**First Aid to the Injured**

**Fainting.**—Place flat on back. Allow fresh air to circulate, and sprinkle with water. Place head lower than rest of body.

**Lightning.**—Dash water over the person struck and perform artificial respiration as in drowning.

**Sealing Wax** is not wax at all, nor does it contain a single particle of wax. It is made of shellac, Venice turpentine and cinnabar. Cinnabar gives it the deep red color, and turpentine renders the shellac soft and less brittle.

**To Remove Paint Spots**

Use turpentine or benzine and rub the spots by folding in the goods or rubbing one portion of the material against the other till the spot is en-

tirely gone. Do not rub it with another cloth, just pinch it together with the hands and work it backward and forward.

**Square or Superficial Measure***For Surfaces Having Length and Width Only*

144 square inches make.....	1 square foot
9 square feet make.....	1 square yard
30½ square yards make.....	1 square rod
40 square rods make.....	1 rood
4 roods make.....	1 acre.
640 acres make.....	1 square mile

**Dry or Grain Measure**

2 pints make.....	1 quart
8 quarts make.....	1 peck
4 pecks make.....	1 bushel
36 bushels make.....	1 chaldron

**Saving a Valuable Farm By-Product**

The farmer who harvests only the ears of his corn crop wastes a by-product worth from \$5.00 to \$15.00 an acre. The stalks, leaves, and husks, when properly harvested—just at the time when the ears begin to glaze—average a value of nearly \$5.00 a ton, and the average crop produces three tons to the acre.

(Continued on page 19)

## IF YOU ARE NOT WELL, HERE IS YOUR KEY TO HEALTH

Hattonford, Ont.—“Being run-down after the ‘flu’ I was in a weakened condition, had dizzy spells and shortness of breath, followed by faintness. The middle age period made things seem as though I’d never feel well again, but I was determined not to give up. Hearing of Dr. Pierce’s famous Golden Medical Discovery I sent for a bottle, followed the directions and soon felt less tired and faint, and finally I got back to my normal state. I have thanked God many times for the restoration of my health so I could remain with my family, and I gladly recommend this Discovery of Dr. Pierce’s, for it is so pure, and worth a trial to any one who is run-down.”—Mrs. Gertrude White, Crystal Springs Farm.

Golden Medical Discovery is put up in Dr. Pierce’s Laboratory in Bridgeburg, Ont., and sold by all druggists in both tablets and liquid. Send Dr. Pierce 10c. for trial package of tablets.

Write Dr. Pierce, President, Invalids’ Hotel, Buffalo, N.Y., for free medical advice.

Theodore, Sask.—“It is a pleasure to me to write a few lines about Dr. Pierce’s Golden Medical Discovery. I used this medicine and can say it is just what I wanted and needed. The sour stomach, heartburn after eating and gas are gone



W. E. WAUGH

and I am able to take cold water again. Before I had to take water hot on account of the stomach trouble. I recommend ‘Golden Medical Discovery’ to every one who knows what a weak stomach is.”—W. E. Waugh.

## INVALIDS' HOTEL AND SURGICAL INSTITUTE

**WE** do not know of any institution in the United States doing quite the same work and on such an extensive plan as that carried on at the Invalids' Hotel. The service is under three divisions:

Constituting the first division are the guests of the Hotel who come from every state in the Union and Canada for both medical and surgical attention.

A large number of the patients under treatment, embrace the class known as "medical" or "non-surgical" cases and who as a rule are not confined to their rooms. They are privileged to enjoy all the freedom of the modern hotel of which they are guests under medical treatment. Indeed, there are no restrictions put upon the movements of any patient who is physically able to be about. It is only required that they be within reach of their physician at certain times and that they present themselves at the treatment room at the designated hours.

The second division comprises the work of the staff of corresponding physicians into whose hands go the vast quantities of letters which are received each day. This correspondence develops into what are known as "Home Treat-

ment" cases. The patient writes describing his malady as clearly as possible. If the specialist recognizes unmistakable signs of certain disorders, he is free to give suitable advice and outline appropriate treatment. Otherwise further information is asked for. A special blank form is then forwarded containing relevant questions which, when answered and in the hands of the physician, are very carefully considered, the patient is advised by mail of what the symptoms indicate, and, for a small fee, special remedies are prepared and sent to him through mail or by express.

Within the walls of this institution are four great fire-proof vaults in which are filed, each separately, the correspondence and a complete record of every person who has consulted us in regard to matters of health. Great books of reference are the keys to this correspondence.

The third division of practice has to do with what are designated as "Transient Patients" or those who call personally at the institution for an examination and who if conditions warrant, are given appropriate home treatment consisting of medicines especially prepared for each in-

(Continued on page 32)

## STATEMENT OF CASE FOR FREE CONSULTATION

Name?..... Occupation?.....  
Age?..... Married or Single?.....  
Post Office?..... County?.....  
Province?..... Express Office?.....  
Present weight?..... Former weight?.....  
Height?..... Any previous illness?.....  
Sleep well?..... How many hours?.....  
Awake refreshed?..... Night sweats?.....  
Any headache?..... What part of the head?.....  
How is your sight?..... Does reading cause headache?..... Appetite?.....  
Tongue coated?..... Digestion good?.....  
Sour risings?..... Any distress or pain?..... Where?.....  
When?..... Sharp or dull?.....  
How often do your bowels move?..... Any piles?.....  
Eyes and skin yellow?..... Pale?..... Palpitation of heart?.....  
When?..... Cold feet and hands?..... Dizzy spells?.....  
Catarrh?..... If so, what is character of discharge?.....

Cough?..... Any expectation?.....  
 What kind?..... Breathing difficult?.....  
 Take cold easily?... Fever or chills?..... When?.....  
 Hearing good?..... Back weak?..... Kidneys act well?.....  
 How often during the day?..... Quantity at night?.....  
 Any scalding?..... Any bloating?..... Where?.....  
 Describe color and appearance of urine on voiding?.....  
 After standing 12 hours in tight bottle?.....  
 Any obstruction to flow?.....  
 Memory poor?..... Nervous?..... Low spirits?.....  
 Eat rich food?..... How soon after supper do you retire?.....  
 Labor hard, mentally or physically?.....  
 What is your greatest trouble?.....  
 How long have you been sick?.....  
 Have you ever written to us about your disease?.....  
 If so, when?.....  
 If necessary, could you come to the Invalids' Hotel for personal examination?.....  
 Have you taken any of our medicines?.....

**GENERAL REMARKS:** .....

**NOTICE:** Tear out and mail to Invalids' Hotel, or if preferred, to O. L. HARRIES, 665 Main Street, Buffalo, N.Y.



(Continued from page 14)

But when the stalks are left standing beyond the time of ripening; when sun, wind, rain, and frost have stripped them of their food elements, they are practically worthless. The best feeding authorities in the country tell us to save the stalks. To-day, on thousands of farms, cornstover, with all the richness of the plant at its prime, has taken the place of hay for roughage. These farmers make the corn crop a double profit crop. They get the 60 per cent of value in the ears, and the 40 per cent. of feeding value in the stalks—a full 100 per cent. corn harvest. These farmers are safe against a shortage of roughage. They either sell the hay crop or they reduce their hay acreage.

### When to Plant Seeds

The seeds listed below are divided into classes according to the temperature at which they will germinate and can be safely planted:

Class I. Includes seeds that will sprout in an average temperature of 45 degrees in the shade, which is about the temperature at the time peach and plum trees bloom.

Class II Includes those seeds which will germinate at an average temperature of 60 degrees

in the shade, the temperature about the time when the apple trees bloom.

#### Class I.

Beet	Parsnip	Parsley
Oats	Onion	Carrot
Rye	Pea	Cabbage
Wheat	Barley	Cauliflower
Red Clover	Radish	Endive
Crimson Clover	Turnip	Kale
Grasses	Spinach	Lettuce

These can be planted with safety in the spring as soon as the ground can be prepared, and some of them, if planted in the fall, live-through the winter.

#### Class II.

Alfalfa	Squash	Soy Bean
Cowpea	Cucumber	Pole Bean
Corn	Pumpkin	String Bean
Cotton	Tomato	Melon
Egg Plant	Pepper	Okra

### To Remove Rusty Screws

Apply a red-hot iron to the head of the screw for a short time, then use a screw driver while the screw is still hot.

**To Remove Rusty Bolts**

The best method is to apply kerosene oil liberally, and give time for it to soften the rust before any attempt is made to turn the nut. If after the rust has softened it does not start easily with the wrench, give it a rap on one corner with a hammer. A hammer and cold chisel rightly used will often start a rusted nut that would not yield to the wrench without twisting off the bolt.

**First Aid to the Injured**

**Burns and Scalds.**—Cover with cooking soda and lay wet cloths over the injured part. Apply white of egg and olive oil; olive or linseed oil, plain or mixed with chalk and whiting; sweet or olive oil and lime water.

**Sunstroke.**—Loosen clothing. Get the patient into the shade and apply ice-cold water to the head. Keep head 'n elevated position.

**Stings of Insects.**—Apply weak ammonia, oil, salt water, iodine.

**Fire in One's Clothing.**—Don't run—especially not downstairs or out-of-doors. Roll on a carpet, or wrap in a woollen rug or blanket. Keep the head down, so as not to inhale flame.

**Mad Dog or Snake Bite.**—Tie a cord tightly

above wound. Suck the wound and cauterize with nitric acid, caustic, or white-hot iron immediately, or cut out adjoining parts with a sharp knife. Give whisky or brandy.

**Drowning.**—1. Loosen the clothing, if any. 2. Empty the lungs of water by laying the patient on his stomach and lifting him by the middle, so that the head hangs down. Jerk the body a few times. 3. Pull tongue forward, using handkerchief, or pin with string, if necessary. 4. Imitate respiration by alternately compressing and expanding the lower ribs about twenty times a minute. Alternately raising and lowering the arms from the sides up above the head, gently but persistently, will stimulate the action of the lungs. 5. Apply warmth and friction to extremities. 6. By holding the tongue forward, closing the nostrils, and pressing the "Adam's apple" back (so as to close entrance to stomach) direct inflation may be tried. Take a deep breath and breathe it forcibly into the mouth of patient, compressing the chest to expel air. Repeat this operation. 7. Don't give up! People have been saved after hours of patient, active effort. 8. When breathing begins, get patient into a warm bed, give warm drinks, or spirits by

(Continued on page 22)

## ARE YOU STRONG AND FULL OF PEP?

"I had lost interest in my business because I felt languid and tired," said a business man, "but since taking that splendid tonic and blood medicine, Dr. Pierce's Golden Medical Discovery, I feel strong and full of 'pep,' equal to any emergency. The worn-out feeling is gone and I am thankful for restored vitality, so necessary to a business man." Thousands in every section have testified that instead of being pale, weak and tired the Golden Medical Discovery gave them renewed vim, vigor and vitality. Try it! All druggists.

Send 10 cents to Dr. Pierce's Laboratory in Bridgeburg, Ont., for a trial package of any of his remedies. Write Doctor Pierce, President Invalids' Hotel in Buffalo, N.Y., if you desire free medical advice.

You can quickly put yourself in A-1 condition by going to your druggist and obtaining that wonderful discovery of Dr. Pierce's, called Anuric. Many thousands write Dr. Pierce of the benefits received—that their backache, rheumatism, and other symptoms of uric acid deposits in joints or muscles have been completely conquered by its use.

## HOW TO KEEP FIT!

Bear River, N.S.—"My back was so bad I could hardly work. I was always tired out and had no ambition; was nervous and dizzy, and everything seemed to worry me. I also had terrible pains in my right side. I felt badly for about eighteen months, and could not do my work as it should have been done. I tried several doctors and also bought about \$25.00 worth of put up medicines, but I found no relief until I took Doctor Pierce's Golden Medicines. I have taken two bottles of the Discovery, and four of the Anuric Tablets, and can say that I feel as well as I have felt for the last ten years."—Norman E. Trimper, R.R. 1.



NORMAN E. TRIMPER

(Continued from page 20)

teaspoonfuls. Let there be plenty of fresh air and quiet.

### Capacity of Cisterns

For a circular cistern, take the diameter in feet, square that and multiply by .785398; that gives the area in feet; multiply this by 1728 and divide by 231, and you will have the number of gallons capacity of one foot in depth of the cistern. Multiply by the number of feet deep for total contents. If for a square cistern, multiply length by breadth, and proceed to multiply the result by 1728 and to divide by 231 as before. Calculated in this way we find that each foot in depth of a

Circular cistern 5 ft. in dia. holds	4.66 barrels.
Circular cistern 6 ft. in dia. holds	6.71 barrels.
Circular cistern 7 ft. in dia. holds	9.13 barrels.
Circular cistern 8 ft. in dia. holds	11.93 barrels.
Circular cistern 9 ft. in dia. holds	15.10 barrels.
Circular cistern 10 ft. in dia. holds	18.65 barrels.
Square cistern 5 x 5 feet holds	5.92 barrels
Square cistern 6 x 6 feet holds	8.54 barrels
Square cistern 7 x 7 feet holds	11.63 barrels
Square cistern 8 x 8 feet holds	15.19 barrels
Square cistern 9 x 9 feet holds	19.39 barrels
Square cistern 10 x 10 feet holds	23.74 barrels

In calculating the capacity of cisterns, etc.,  $31\frac{1}{2}$  gallons are estimated to one barrel and 63 gallons to one hogshead.

### Tanks and Contents

Diam. Feet.	Depth Feet.	Gallons.	Diam. Feet.	Depth Feet.	Gallons.
12	8	6,767	24	12	0,607
14	9	10,363	26	13	1,628
16	9	13,535	28	14	64,481
18	10	19,034	30	15	79,310
20	10	23,499	32	16	96,253
22	11	31,277	34	17	115,451

### To Prepare Fence Posts

Take boiled linseed oil and stir it into pulverized charcoal to the consistency of paint. Put a coat of this over the post. Time and weather have no effect on it. Posts can be prepared for less than two cents apiece.

### Fire and Waterproof Cement

Two parts finely sifted unruined iron filings; one part perfectly dry finely powdered loam. Knead the mixture with strong vinegar into a

(Continued on page 24)

## LOOK AFTER YOUR BLOOD

In these days when there is so much talk about germs, you must fortify yourself against them. At church, in the "movie," or at any entertainment, if your neighbor has a cold and sneezes or coughs, the air is full of germs and if you are not in good condition, you may become ill. The only sure protection your body can have is blood in good condition. Take that splendid herbal tonic, Dr. Pierce's Golden Medical Discovery, then your blood will be rich and pure and germs can't harm you.

Vancouver, B.C.—"After I had gone through a bad sick spell I was in a very weakened condition, just could not regain my strength, and my blood was poor and impoverished, I got very thin and was so nervous I could not sleep. I was a physical wreck when I began taking Dr. Pierce's Golden Medical Discovery and I never took a medicine that did me so much good. It put me on my feet and built me up in perfect health and strength. For anyone who is run-down or in need of something to build up the blood, it is fine."—Mrs. Isabel Marcellais, Box 1042.

Pellets mailed direct from our Laboratory in Bridgeburg, Ont., if not at Drug Store

**Pierce's**  
**Pleasant**  
**Purgative**  
**Pellets**

SIZE  
OF  
PELLETS.



These Pleasant Pellets operate without disturbance to the system, diet or occupation. Put up in glass vials, and sold by all druggists. As a laxative, or gently acting cathartic, these little Pleasant Pellets give good satisfaction.

Read this: London, Ont.—"For about six months I suffered with my liver. I had no life nor strength, and was upset all the time. I took medicines but nothing seemed to give me any relief until I began taking Dr. Pierce's Pleasant Pellets and by using these 'Pellets' as directed I was completely relieved of the jaundice condition and my liver has been active and normal ever since."—Mrs. H. Payne, 16 Wilson Ave.

(Continued from page 22)

putty-like paste. Use as soon as made, as it will harden quickly.

### Mathematical Rules

To find the area of a parallelogram (any ordinary four-sided figure), multiply the length by the breadth.

To find the circumference of a circle, multiply the diameter by 3.14159, or 3.

To find the diameter of a circle, multiply the circumference by .31831, or divide the circumference by 3 1-7.

To find the area of a circle, multiply the square of the diameter by .7854; or, multiply the square of the circumference by .079577; or, multiply half the diameter by half the circumference.

To find the area of a circular ring, multiply the sum of the diameters of the two circles by the difference of the diameters, and that product by .7854.

### Antidotes for Poison

*First.*—Send for a physician. *Second.*—Induce vomiting by tickling throat with feather or finger; drinking hot water or strong mustard and water; swallow sweet oil or whites of eggs. Acids are antidotes for alkalies and *vice versa*.

*For Poisoning from Opium, Laudanum, and Morphine.*—An emetic should be followed by strong coffee or the white of an egg. Keep the patient walking for two or three hours.

*For Poisoning from Arsenic, Corrosive Sublimite, Verdigris, Blue Vitriol, and Vegetables Kept in Copper Kettles.*—Give an emetic and the white of an egg, sweet-oil and milk.

*For Poisoning from Hemlock, Aconite, Belladonna and Foxglove.*—After emetic give tannin and stimulants.

*Strychnine.*—First give an emetic, and then a large dose of bromide of sodium (60 grains in solution). Repeat every hour until three or four doses have been taken.

*Toadstool Poisoning.*—Give emetics promptly, then castor oil and stimulants. Apply heat.

*Poison Ivy or Oak.*—There are three generally effective remedies for poison ivy or oak. One is to apply hot water and alcohol to the poisoned surface. Another is peroxide of hydrogen. The third is to apply a solution of lead, about 40 grains to a pound of water. Two other remedies that are more or less effective are baking soda and dry starch.

(Continued on page 26)

## ELDERLY PEOPLE CAN RETAIN THEIR HEALTH

Peace, comfort, happy memories, should reward old age, but too many old folks miss the joys of life's autumn because of lameness, rheumatism, inability to sleep a single night through without having to get up, premature deafness and hardening of the arteries.

These daily and nightly tortures are often the price paid for neglecting kidney weakness during middle age.

Any continued irregularity of the action of the kidneys should be attended to. So should habitual backache, morning lameness or the feeling that you can't get up from a chair, or straighten after stooping.

These are all signs of inflamed, congested, sore kidneys. Treat this trouble at the beginning with Dr. Pierce's An-uric Tablets, and the outlook is favorable for getting rid of it quickly and permanently.

An elderly person cannot so confidently look for a permanent cure of kidney trouble, but can obtain much relief and comfort through the use of An-uric, which is sold at all drug stores, or send 10c. to Dr. Pierce's Laboratory, in Bridgeburg, Ont., for trial package.



OH!  
MY  
BACK!

Write Dr. Pierce, President, Invalids' Hotel, Buffalo, N.Y., for free medical advice

(Continued from page 24)

**Painter's Putty**

Use Spanish whiting and boiled linseed oil, using four times the quantity of the former, 80 per cent. whiting, and 20 per cent. oil. Make it into a stiff paste. If not intended for immediate use, raw oil should be used. It requires one pound of putty to stop 20 yards of surface.

**Long Measure—Length, Distance**

12	lines make	.....	1	inch
12	inches make	.....	1	foot
3	feet make	.....	1	yard
5½	yards make	.....	1	rod
40	rods make	.....	1	furlong
8	furlongs make	.....	1	mile
3	miles make	.....	1	league
69½	miles make	.....	nearly	1 degree
6,075	4-5 feet make	.....	1	nautical mile
5,280	feet make	.....	1	mile

**Liquid or Wine Measure**

4	gills make	.....	1	pint
2	pints make	.....	1	quart
4	quarts make	.....	1	gallon
31½	gallons make	.....	1	barrel
2	barrels make	.....	1	hoghead

**Apothecaries' Weight**

20	grains make	.....	1	scruple
3	scruples make	.....	1	drachm
8	drachms make	.....	1	ounce
12	ounces make	.....	1	pound

**Troy or Jewelers' Weight**

24	grains make	.....	1	pennyweight
20	pennyweights make	.....	1	ounce
12	ounces make	.....	1	pound

**Avoirdupois Weight**

27	11-12 grains make	.....	1	dram
16	drams make	.....	1	ounce
16	ounces make	.....	1	pound
25	pounds make	.....	1	quarter
4	quarters make	.....	1	cwt.
20	cwts. make	.....	1	ton
2,000	pounds make	.....	1	short ton
2,240	pounds make	.....	1	long ton
14	pounds make	.....	1	stone
21½	stones make	.....	1	pig
8	pigs make	.....	1	fother
100	pounds make	.....	1	quintal
5,760	grains apothecaries make	.....	1	pound
144	pounds avoirdupois equals	.....	175	pounds apothecaries or troy.

(Continued on page 28)



## KIDNEY DISEASES

Kidney diseases have been very successfully treated at the Invalids' Hotel and cures effected in thousands of cases which had been pronounced beyond hope. These diseases are readily diagnosticated, or determined, by chemical analysis of the urine, without a personal examination of the patients, who can therefore, generally be successfully treated at their homes. The study and practice of the chemical analysis and microscopical examination of the urine in our consideration of cases, with reference to correct diagnosis, in which our Institution long ago became famous, has naturally led to a very extensive practice in diseases of the urinary organs. Probably no other Institution in the world has been so largely patronized by sufferers from this class of maladies as the old Invalids' Hotel and Surgical Institute. Our specialists have acquired, through a vast and varied experience, great expertness in determining the *exact* nature of each case, and hence, have been successful in *nicely* adapting their remedies to the cure of each individual case.

Write Dr. Pierce at the Invalids' Hotel, Buffalo, N.Y., for free medical advice.

## BLADDER DISEASES

Inflammation of the bladder, gravel, retention of urine and kindred affections may be included among those in the treatment of which our specialists have achieved marvellous success.

### STONE IN THE BLADDER

Stone in the bladder, no matter how large, is crushed, pulverized, washed out and perfectly removed by our surgeons, in the most skilful and safest manner possible and without any cutting, thereby avoiding the great danger of the old and commonly employed operations for stone.

### DISEASES OF DIGESTION

Dyspepsia, "Liver Complaint," Obstinate Constipation, Chronic Diarrhoea and kindred affections are among those chronic diseases in the successful treatment of which specialists of the Invalids' Hotel have attained unparalleled success.

It costs you nothing to consult Dr. Pierce by letter—why not write?

(Continued from page 26)

### Circular Measure

60 seconds make . . . . .	1 minute
50 minutes make . . . . .	1 degree
30 degrees make . . . . .	1 sign
90 degrees make . . . . .	1 quadrant
4 quadrants make . . . . .	1 circle
360 degrees make . . . . .	1 circle
60 miles make . . . . .	1 degree

### Cloth Measure

2 $\frac{1}{4}$ inches make . . . . .	1 nail
4 nails make . . . . .	1 quarter
4 quarters make . . . . .	1 yard

### Cement for Leather Belting

Common glue and American isinglass (not mica) equal parts. Soak for ten hours in sufficient water to cover them. Bring it to a boiling heat and add pine tannin until the whole becomes rosy or appears like the whites of eggs. Apply it warm. Buff the grain off the leather where it is to be cemented, rub the joint surfaces solidly together, let it stand a few hours, and it is ready

for use. If properly put together it will not require riveting.

### Glazier's Putty

Whiting, 70 pounds, boiled oil, 30 pounds, water, 2 gallons; mix. If too thin add more whiting; if too thick add more oil.

### Stone and Brick Walls

A perch of stone is 24.75 cubic feet. When built in the wall, two and three-fourths cubic feet are allowed for the mortar and filling; hence, 22 cubic feet of stone make one perch of wall.

Masons estimate three pecks of lime and four bushels of sand to a perch of wall.

To find the number of perches of stone in a wall, multiply together the length, height, and thickness in feet, and divide by 22.

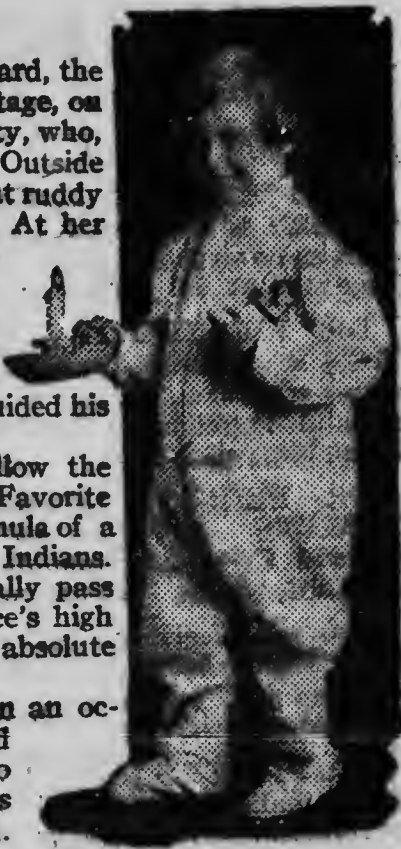
Common bricks are seven and one-quarter to eight inches long by four and one-quarter inches wide and two and a half inches thick. Front bricks are one-quarter inch longer and wider.

## THE BECKONING LIGHT

It was a dark and stormy night, the wind had shifted to eastward, the stars had disappeared under clouds, and within a little fisherman's cottage, on the Newfoundland coast, the good wife feared for her husband's safety, who, she knew, was out on the rough waves with others after mackerel. Outside the storm raged, but within it was warm and cosy, the blazing logs sent ruddy sparks up the wide chimney and beside the fire sat an old woman. At her feet the house cat slept, and opposite sat a fine buxom young woman with a beautiful three-year-old boy in his nightie, all ready for bed. He knelt at his mother's knee and prayed for daddy's safety, who was out on the wide raging sea; then his mother put a lighted candle in his hand and guided him to the window where he placed it to light the way for daddy, and Donald, seeing the looked-for light, guided his boat to safety and to home.

Women who suffer from ills peculiar to their sex, should follow the "beckoning light" to health and happiness by taking Dr. Pierce's Favorite Prescription, the famous herbal remedy. It is made from the formula of a skilled physician, of the same herbs and roots long used by the Indians. These women usually are free from feminine disorders and generally pass through the ordeal of motherhood in safety and ease. Dr. Pierce's high standing as a citizen and long experience as a specialist, guarantees the absolute purity of the Favorite Prescription.

Brantford, Ont.—"For the past few years I have depended upon an occasional bottle of Dr. Pierce's Favorite Prescription to keep me in good health. Whenever I feel at all nervous and tired or weak, a bottle or two of Dr. Pierce's Favorite Prescription has never failed to quiet my nerves and restore me to good health."—Mrs. Sarah Taylor, 163 Dalhousie St.



## DR. PIERCE'S FAMILY MEDICINES

*Mailed direct from Dr. Pierce's Laboratory in Bridgeburg, Ont., on receipt of price, if not kept by your neighborhood store.*

**DR. PIERCE'S GOLDEN MEDICAL DISCOVERY** is an alterative and vegetable tonic, contains no alcohol. Tablets, small size, 65 cents; large size, \$1.35. Liquid, \$1.35.

**DR. PIERCE'S FAVORITE PRESCRIPTION** is an herbal tonic for the chronic weaknesses of women. Contains no alcohol, nor any harmful ingredient. Tablets, small size, 65 cents; large size, \$1.35. Liquid, \$1.35.

**DR. PIERCE'S ANURIC (anti-uric-acid) TABLETS.** A New Remedy for Kidney, Bladder and Uric-Acid Troubles. Price, 65 cents; large size, \$1.35. We pre-pay postage.

You will receive at least a quarter more of the above medicines for \$1.35 than you did previous to 1923 for we have enlarged the bottles and contents this year, both liquid and tablets.

**DR. PIERCE'S IRONTIC (iron tonic) TABLETS** make redder Blood. If the blood is impoverished, we feel nervous, sleepless, "fidgety";

the blood needs to be built up. If we lack iron in the blood, we are pale, anemic. Price, 65 cents, by mail.

**DR. PIERCE'S PLEASANT PELLETS** for Constipation, Bilious and Sick-headaches, Indigestion and many other derangements of the Stomach, Liver and Bowels, when due to Constipation, are corrected by their use. Price, 30 cents.

**DR. PIERCE'S COUGH SYRUP** for Coughs, Colds, Hoarseness, Bronchial Coughs and Non-diphtheritic Sore Throat. Price, 35 cents.

**DR. PIERCE'S HEALING SALVE** is a nice dressing for open, running, or suppurating sores and ulcers. Price, 65 cents.

**DR. PIERCE'S ANODYNE PILE OINTMENT** is a soothing, cooling, healing, antiseptic application for Piles. Price, 65 cents.

**DR. PIERCE'S SOOTHALINE (MENTHA)** is especially recommended for Sunburn, Chilblains, tired, burning, aching feet, chapped skin. Applied after shaving this "Soothaline" is very cooling and healing. Price, 65 cents.

## CLINICAL LABORATORY, INVALIDS' HOTEL

Where Analyses of Urine, Blood, Sputum, Stomach Contents etc. are Made  
Under the Care of an Expert Chemist

The Dr. Pierce Clinic of Urology will make a simple test of the urine free of charge, sufficient to determine whether or not you are suffering from any serious kidney or bladder ailment; or a more thorough and complete analysis of the urine will be made for the sum of two dollars. This will include a most careful and scientific chemical and microscopical examination, also a bacteriological stain of the sediment, if indicated, and a complete typewritten report of the analysis with a letter of explanation will be mailed to the patient. Write Dr. Pierce at the Invalids' Hotel in Buffalo, N.Y., for further particulars regarding urinalysis and for free medical advice. We will furnish a mailing case for sending sample (approved by the United States Post Office Department) with bottle and preservative, and send same by mail for *two dimes*.

This is a service of which a great many people are taking advantage of to-day. It helps to keep "tabs" on your general health, and may prolong life. Many of our patrons have an analysis made regularly, every three months.

When sending sample for analysis, write us under separate cover, giving a statement and history of your case. Ask any medical questions you wish answered.

Address: Dr. Pierce's Invalids' Hotel, 665 Main St., Buffalo, N.Y.



(Continued from p. 16)  
dividual case. This class of patients usually desire a thorough and searching examination or a "survey" of their physical selves. Our standard examination involves the taking of personal and family history, heredity, habits, mode of living, etc., which is followed in systematic order with an examination by a specialist, of the heart and lungs, nose, throat and ears, the skin, abdomen, and all other parts of the anatomy which may seem to the patient to be in an unsatisfactory state. Certain statements made



CORNER OF X-RAY LABORATORY, INVALIDS' HOTEL

by the patient may indicate that an analysis of the urine is advisable, that a blood count is necessary or that bacteriological tests may solve the cause of the malady. The X-Ray Laboratory is a most important adjunct in this process of examination. The facilities at the Invalids' Hotel and Surgical Institute for making complete chemic and microscopic analyses are unsurpassed.

## X-RAY PHOTOGRAPHS

People who have been patients at Dr. Pierce's Invalids' Hotel and Surgical Institute in Buffalo, N.Y., have much to say in regard to its resources. This modern, up-to-date Sanitarium, not only affords the best medical and surgical treatment by experienced physicians, but it also provides every remedial agent for the treatment of disease without medicines. One of the most wonderful, to the average layman, is the X-ray, which may be used both in the treatment of various diseases, and in the diagnosis of many obscure conditions. With the aid of this the interior of the human body is no longer the sealed book it has been heretofore. Abnormal states of the bones, gall stones, stone in the bladder or in the kidneys, are now shown plainly by what are known as X-ray photographs. Internal tumors and the enlargement of the deep-seated organs are also discovered by this means, and it has proved a very valuable aid in the diagnosis of tuberculosis of the lungs. Many obstinate skin diseases, such as psoriasis and eczema, yield in a most pleasing manner to the effects of these wonderful rays.



X-RAY PHOTO SHOWING BROKEN WRIST



Our Canadian Branch Laboratory at Bridgeburg, Ont., is complete, and here are made all Dr. Pierce's Family Remedies which have been so favorably known to Canadians for 50 years, and for sale by every good druggist in Canada.

# DR. PIERCE'S



## TABULETS

## ANURIC

**FOR your back-ache, ANURIC strengthens weak kidneys, helps them to eliminate poisonous uric acid from the system.**

At all drug stores, or send 10c to Dr. Pierce's Laboratory, in Bridgeburg, Ont. for trial pkg. tablets.

**World's Dispensary  
Medical Association  
Bridgeburg Ont.**



