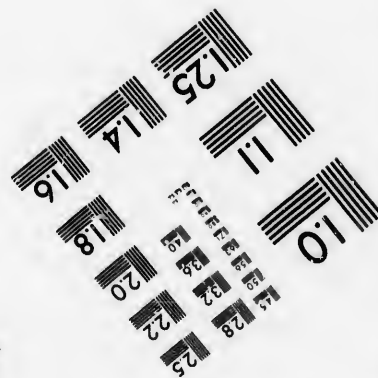
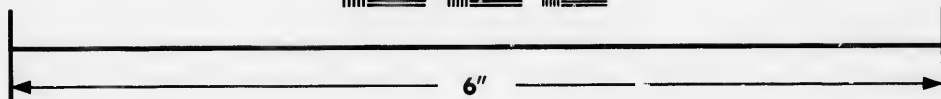
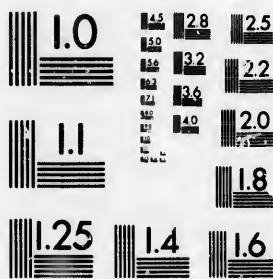


**IMAGE EVALUATION
TEST TARGET (MT-3)**



Photographic
Sciences
Corporation

23 WEST MAIN STREET
WEBSTER, N.Y. 14580
(716) 872-4503



**CIHM/ICMH
Microfiche
Series.**

**CIHM/ICMH
Collection de
microfiches.**



Canadian Institute for Historical Microproductions / Institut canadien de microreproductions historiques



© 1986

Technical and Bibliographic Notes/Notes techniques et bibliographiques

The Institute has attempted to obtain the best original copy available for filming. Features of this copy which may be bibliographically unique, which may alter any of the images in the reproduction, or which may significantly change the usual method of filming, are checked below.

L'Institut a microfilmé le meilleur exemplaire qu'il lui a été possible de se procurer. Les détails de cet exemplaire qui sont peut-être uniques du point de vue bibliographique, qui peuvent modifier une image reproduite, ou qui peuvent exiger une modification dans la méthode normale de filmage sont indiqués ci-dessous.

- Coloured covers/
Couverture de couleur
- Covers damaged/
Couverture endommagée
- Covers restored and/or laminated/
Couverture restaurée et/ou pelliculée
- Cover title missing/
Le titre de couverture manque
- Coloured maps/
Cartes géographiques en couleur
- Coloured ink (i.e. other than blue or black)/
Encre de couleur (i.e. autre que bleue ou noire)
- Coloured plates and/or illustrations/
Planches et/ou illustrations en couleur
- Bound with other material/
Relié avec d'autres documents
- Tight binding may cause shadows or distortion along interior margin/
La reliure serrée peut causer de l'ombre ou de la distorsion le long de la marge intérieure
- Blank leaves added during restoration may appear within the text. Whenever possible, these have been omitted from filming/
Il se peut que certaines pages blanches ajoutées lors d'une restauration apparaissent dans le texte, mais, lorsque cela était possible, ces pages n'ont pas été filmées.
- Additional comments: /
Commentaires supplémentaires: [Printed ephemera] 1 sheet (verso blank)

- Coloured pages/
Pages de couleur
- Pages damaged/
Pages endommagées
- Pages restored and/or laminated/
Pages restaurées et/ou pelliculées
- Pages discoloured, stained or foxed/
Pages décolorées, tachetées ou piquées
- Pages detached/
Pages détachées
- Showthrough/
Transparence
- Quality of print varies/
Qualité inégale de l'impression
- Includes supplementary material/
Comprend du matériel supplémentaire
- Only edition available/
Seule édition disponible
- Pages wholly or partially obscured by errata slips, tissues, etc., have been refilmed to ensure the best possible image/
Les pages totalement ou partiellement obscurcies par un feuillet d'errata, une pelure, etc., ont été filmées à nouveau de façon à obtenir la meilleure image possible.

This item is filmed at the reduction ratio checked below/
Ce document est filmé au taux de réduction indiqué ci-dessous.

| | | | | | | | | | | | |
|--------------------------|--------------------------|--------------------------|--------------------------|--------------------------|--------------------------|--------------------------|--------------------------|--------------------------|-------------------------------------|--------------------------|--------------------------|
| 10X | 12X | 14X | 16X | 18X | 20X | 22X | 24X | 26X | 28X | 30X | 32X |
| <input type="checkbox"/> | <input type="checkbox"/> | <input type="checkbox"/> | <input type="checkbox"/> | <input type="checkbox"/> | <input type="checkbox"/> | <input type="checkbox"/> | <input type="checkbox"/> | <input type="checkbox"/> | <input checked="" type="checkbox"/> | <input type="checkbox"/> | <input type="checkbox"/> |

The copy filmed here has been reproduced thanks to the generosity of:

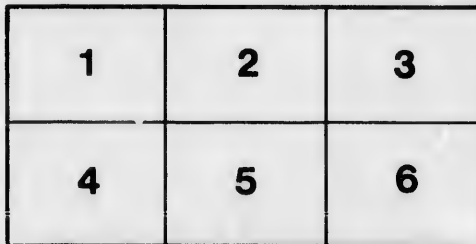
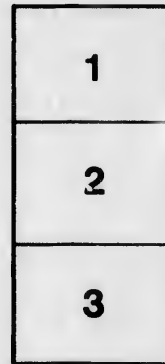
Douglas Library
Queen's University

The images appearing here are the best quality possible considering the condition and legibility of the original copy and in keeping with the filming contract specifications.

Original copies in printed paper covers are filmed beginning with the front cover and ending on the last page with a printed or illustrated impression, or the back cover when appropriate. All other original copies are filmed beginning on the first page with a printed or illustrated impression, and ending on the last page with a printed or illustrated impression.

The last recorded frame on each microfiche shall contain the symbol \rightarrow (meaning "CONTINUED"), or the symbol ∇ (meaning "END"), whichever applies.

Maps, plates, charts, etc., may be filmed at different reduction ratios. Those too large to be entirely included in one exposure are filmed beginning in the upper left hand corner, left to right and top to bottom, as many frames as required. The following diagrams illustrate the method:



L'exemplaire filmé fut reproduit grâce à la générosité de:

Douglas Library
Queen's University

Les images suivantes ont été reproduites avec le plus grand soin, compte tenu de la condition et de la netteté de l'exemplaire filmé, et en conformité avec les conditions du contrat de filmage.

Les exemplaires originaux dont la couverture en papier est imprimée sont filmés en commençant par le premier plat et en terminant soit par la dernière page qui comporte une empreinte d'impression ou d'illustration, soit par le second plat, selon le cas. Tous les autres exemplaires originaux sont filmés en commençant par la première page qui comporte une empreinte d'impression ou d'illustration et en terminant par la dernière page qui comporte une telle empreinte.

Un des symboles suivants apparaîtra sur la dernière image de chaque microfiche, selon le cas: le symbole \rightarrow signifie "A SUIVRE", le symbole ∇ signifie "FIN".

Les cartes, planches, tableaux, etc., peuvent être filmés à des taux de réduction différents. Lorsque le document est trop grand pour être reproduit en un seul cliché, il est filmé à partir de l'angle supérieur gauche, de gauche à droite, et de haut en bas, en prenant le nombre d'images nécessaire. Les diagrammes suivants illustrent la méthode.

rrata
to

pelure,
n à

TO THE ELECTORS OF *The County Of* **GRENVILLE.**

Fellow Subjects, from the recent Rebellion which broke out in this Province, & from the Course pursued by one of the Members returned to represent this County, in our Provincial Assembly, in connexion with many of its instigators, it became the duty of the Members of that Body to declare his seat vacated. from which Circumstance you will again soon be called upon to Exercise the Elective franchise; by selecting from the various Candidates offering themselves to your notice, one suitable person in your estimation, to fill the vacancy occasioned by his expulsion.

From the circumstance of so many of the members of the present House of Assembly of this Province having taken part with the Rebel McKenzie, and others in the Rebellion, should cause every well wisher of the Country, and every one who desires the preservation of his family, and friends; from the murderous hands of that Faction, to act cautiously in giving his support to any person who should solicit it, until first having weighed scrupulously his merits; not merely, as a man of Property, but as a British subject in principle; These are points that should never be lost sight of, as they are of the first importance to the safety of the Institutions of our Country, and which for the preservation of order, the safety of Person, and Property, are not equalled by any of the present day, in any part of the world. These are facts, admitted by all candid and honest men, the only dissenting voice is with such as would willingly acquire a mass wealth by Rebellion. Rapine and murder; I mean, Fellow Subjects those who would unblushingly dispossess you of your hard earnings and settle themselves in your homes, and scatter you to the four winds of heaven, with as much Sang Froid as their Fathers did with many of our parentage, on a former occasion on this continent, not satisfied with the Rapine & sacriligious accumulation of wealth of the year 75—they come among us in sheeps clothing; again to hunt us from the peaceful retreat of many of our Fathers, and like the blood Hound never willing to give up the chase, until his prey is completely exterminated or driven into the depth of the forest beyond his reach.

Fellow subjects in offering myself to your notice for your suffrages at the approaching Election, I feel that I have peculiar claims to your support, I was not, only born, and brought up among you, but have always resided with you, and trust I shall continue to do so during life; my prospects are peculiarly identified with yours, as my all is in real estate among you, as well as that of all my family—my parentage were of those engaged on two great occasions, on this continent, first in the subjugation of these provinces about the year 60 and again engaged with the Rebels during the American Revolution of 75 and were sacked and driven from affluence to the wilderness on these shores after the loss of their all, save, a pure conscience.

Since the Rebellion broke out in this Province I have used my feeble means, as far as occasion offered to aid in suppressing any attempt to subvert our Constitution.

Fellow Subjects I shall meet you on the day of the Election when I will address you and explain my sentiments more fully; you may be told that I am not a candidate by those who might wish it to be so, but do not believe any such tale until I inform you myself; as I assure you I shall be at the Hustings on the day appointed, when I will feel thankful to all such as confide in me so far as to give me their support, and trust that should I be elected, the confidence reposed in me will never be misplaced; and that the interest of this my native County, and Country generally, shall be the object of my exertions.

I have the Honor to be,

Fellow Subjects,

Your Obe't. Serv't.

HAMILTON D. JESSUP.

Prescott, March 11th, 1838.

