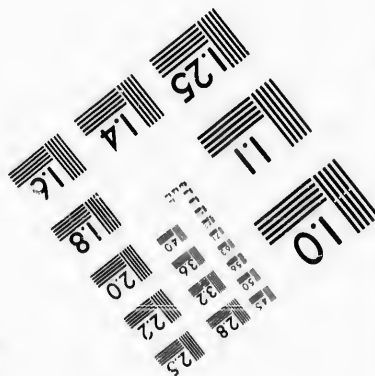
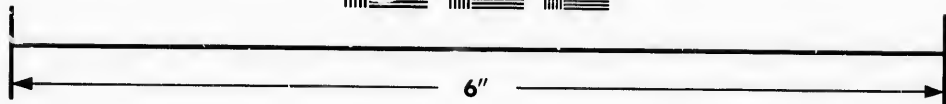
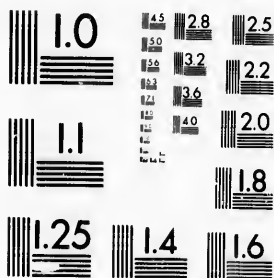


**IMAGE EVALUATION  
TEST TARGET (MT-3)**



**Photographic  
Sciences  
Corporation**

23 WEST MAIN STREET  
WEBSTER, N.Y. 14580  
(716) 872-4503



**CIHM/ICMH  
Microfiche  
Series.**

**CIHM/ICMH  
Collection de  
microfiches.**



Canadian Institute for Historical Microreproductions / Institut canadien de microreproductions historiques



**© 1986**

Technical and Bibliographic Notes/Notes techniques et bibliographiques

The Institute has attempted to obtain the best original copy available for filming. Features of this copy which may be bibliographically unique, which may alter any of the images in the reproduction, or which may significantly change the usual method of filming, are checked below.

L'Institut a microfilmé le meilleur exemplaire qu'il lui a été possible de se procurer. Les détails de cet exemplaire qui sont peut-être uniques du point de vue bibliographique, qui peuvent modifier une image reproduite, ou qui peuvent exiger une modification dans la méthode normale de filmage sont indiqués ci-dessous.

- |  |  |
|--|--|
| <input type="checkbox"/> Coloured covers/<br>Couverture de couleur   | <input checked="" type="checkbox"/> Coloured pages/<br>Pages de couleur  |
| <input type="checkbox"/> Covers damaged/<br>Couverture endommagée  | <input type="checkbox"/> Pages damaged/<br>Pages endommagées   |
| <input type="checkbox"/> Covers restored and/or laminated/<br>Couverture restaurée et/ou pelliculée  | <input type="checkbox"/> Pages restored and/or laminated/<br>Pages restaurées et/ou pelliculées  |
| <input type="checkbox"/> Cover title missing/<br>Le titre de couverture manque   | <input checked="" type="checkbox"/> Pages discoloured, stained or foxed/<br>Pages décolorées, tachetées ou piquées   |
| <input type="checkbox"/> Coloured maps/<br>Cartes géographiques en couleur   | <input type="checkbox"/> Pages detached/<br>Pages détachées  |
| <input type="checkbox"/> Coloured ink (i.e. other than blue or black)/<br>Encre de couleur (i.e. autre que bleue ou noire)   | <input checked="" type="checkbox"/> Showthrough/<br>Transparence   |
| <input type="checkbox"/> Coloured plates and/or illustrations/<br>Planches et/ou illustrations en couleur  | <input type="checkbox"/> Quality of print varies/<br>Qualité inégale de l'impression   |
| <input type="checkbox"/> Bound with other material/<br>Relié avec d'autres documents   | <input type="checkbox"/> Includes supplementary material/<br>Comprend du matériel supplémentaire   |
| <input type="checkbox"/> Tight binding may cause shadows or distortion<br>along interior margin/<br>La reliure serrée peut causer de l'ombre ou de la<br>distorsion le long de la marge intérieure   | <input type="checkbox"/> Only edition available/<br>Seule édition disponible   |
| <input type="checkbox"/> Blank leaves added during restoration may<br>appear within the text. Whenever possible, these<br>have been omitted from filming/<br>Il se peut que certaines pages blanches ajoutées<br>lors d'une restauration apparaissent dans le texte,<br>mais, lorsque cela était possible, ces pages n'ont<br>pas été filmées. | <input type="checkbox"/> Pages wholly or partially obscured by errata<br>slips, tissues, etc., have been refilmed to<br>ensure the best possible image/<br>Les pages totalement ou partiellement<br>obscurcies par un feuillet d'errata, une pelure,<br>etc., ont été filmées à nouveau de façon à<br>obtenir la meilleure image possible. |
| <input checked="" type="checkbox"/> Additional comments: / [Printed ephemera] [4] p.<br>Commentaires supplémentaires:  |  |

This item is filmed at the reduction ratio checked below/  
Ce document est filmé au taux de réduction indiqué ci-dessous.

10X	12X	14X	16X	18X	20X	22X	24X	26X	28X	30X	32X
				✓							

The copy filmed here has been reproduced thanks to the generosity of:

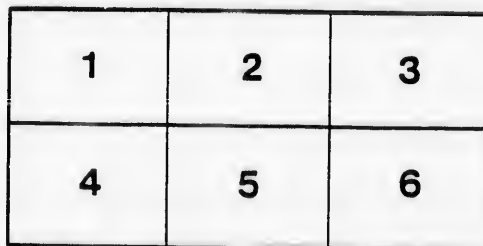
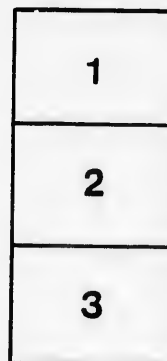
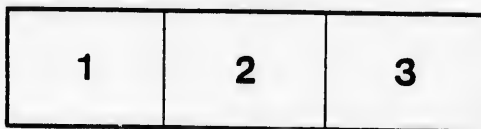
D.B. Weldon Library  
University of Western Ontario  
(Regional History Room)

The images appearing here are the best quality possible considering the condition and legibility of the original copy and in keeping with the filming contract specifications.

Original copies in printed paper covers are filmed beginning with the front cover and ending on the last page with a printed or illustrated impression, or the back cover when appropriate. All other original copies are filmed beginning on the first page with a printed or illustrated impression, and ending on the last page with a printed or illustrated impression.

The last recorded frame on each microfiche shall contain the symbol  $\rightarrow$  (meaning "CONTINUED"), or the symbol  $\nabla$  (meaning "END"), whichever applies.

Maps, plates, charts, etc., may be filmed at different reduction ratios. Those too large to be entirely included in one exposure are filmed beginning in the upper left hand corner, left to right and top to bottom, as many frames as required. The following diagrams illustrate the method:



L'exemplaire filmé fut reproduit grâce à la générosité de:

D.B. Weldon Library  
University of Western Ontario  
(Regional History Room)

Les images suivantes ont été reproduites avec le plus grand soin, compte tenu de la condition et de la netteté de l'exemplaire filmé, et en conformité avec les conditions du contrat de filmage.

Les exemplaires originaux dont la couverture en papier est imprimée sont filmés en commençant par le premier plat et en terminant soit par la dernière page qui comporte une empreinte d'impression ou d'illustration, soit par le second plat, selon le cas. Tous les autres exemplaires originaux sont filmés en commençant par la première page qui comporte une empreinte d'impression ou d'illustration et en terminant par la dernière page qui comporte une telle empreinte.

Un des symboles suivants apparaîtra sur la dernière image de chaque microfiche, selon le cas: le symbole  $\rightarrow$  signifie "A SUIVRE", le symbole  $\nabla$  signifie "FIN".

Les cartes, planches, tableaux, etc., peuvent être filmés à des taux de réduction différents. Lorsque le document est trop grand pour être reproduit en un seul cliché, il est filmé à partir de l'angle supérieur gauche, de gauche à droite et de haut en bas, en prenant le nombre d'images nécessaire. Les diagrammes suivants illustrent la méthode.

# High School, Stratford.

---

ESTABLISHED, - 1852.

---

## BOARD OF EDUCATION:

P. R. JARVIS, Chairman.

JOHN READ,  
MOSES McFADDEN,  
THOMAS STONEY,  
JAMES SHARMAN,  
JAMES TROW, M.P.  
JOHN VANSTONE,  
THOS. MILLER,  
D. T. BAILEY,

JAS. E. MOORE,  
E. K. BARNSDALE,  
JOHN STUBBS,  
REV. E. PATTERSON, M.A.  
ROBERT MYERS,  
SAMUEL BEATTIE,  
T. MAYNE DALY, Jr.  
JAMES STEET, Secretary.

---

HEADMASTER: C. J. MACGREGOR, M.A.

---

MATHEMATICS: C. J. Macgregor, M.A., (Tor.) Gold Medallist in Mathematics, and Silver Medallist in Natural Sciences.

CLASSICS, MODERN LANGUAGES AND SCIENCE: R. A. Collman, B.A., (Vict.) Silver Medallist in Classics, and First Class Honors in Modern Languages and Natural Science.

ENGLISH, BOOK-KEEPING AND HISTORY: John Wilson, B.A., (Tor.) First Class (A) Normal School Certificate.

ASSISTANT ENGLISH MASTER: R. H. Collins, Second Class (A) Provincial Certificate.

# LIMIT TABLE.

Arranged in accordance with "Revised Programme for High Schools," adopted by the Council of Public Instruction, November 12th, 1879.

Pupils of the Lower School are Classified in Four Forms, with subjects of study as follows:—

Form I.	Form III.
<p><i>Arithmetic</i>—To end of Proportion.  <i>Algebra</i>—Elementary Rules and Factoring.  <i>Euclid</i>—Lib. I., Definitions, Prop.—17.  <i>Latin</i>—Principia Latina: Ex 1, 19. Grammar to end of Reg Verbs.  <i>French</i>—De Fivas: Ex 1, 24. Reg verbs to Sect 151.  <i>German</i>—Ahn. Ex 1, 30. Grammar to end of Pronoun.  <i>Eng Grammar</i>—Mason. Definitions, Inflections, Parsing, Analysis of Prose.  <i>Etymology</i>—Prefixes, Affixes, and Latin Roots to end of letter "G."  <i>History, British</i>—Previous to Tudor Period.  <i>Geography</i>—General, Canadian &amp; United States.</p>	<p><i>Arithmetic</i>—To end of work.  <i>Algebra</i>—Quadratics and Surds.  <i>Euclid</i>—Lib. 1 and 2.  <i>Latin</i>—Virg Æneid, Lib 1. Grammar, [Arnold's], Composition. Ex 1, 13.  <i>French</i>—De Fivas. Irregular Verbs. Reader.  <i>German</i>—Grammar. Adler's Reader to p 55.  <i>Eng Grammar</i>—Mason. Analysis.  <i>Etymology</i>—Latin Roots. Prefixes and Affixes.  <i>Composition</i>—Themes and Letter Writing.  <i>English Literature</i>—Goldsmith's Traveller.  <i>History, British</i>—Edith Thompson.  " <i>Canadian</i>—Outlines.  " <i>Roman</i>—To First Trumvirate.  <i>Geography</i>—As for Intermediate.  <i>Natural Philosophy</i>—Statics.</p>
Form II.	Form IV.
<p><i>Arithmetic</i>—To Profit and Loss, [H. Smith.]  <i>Algebra</i>—Simple Equations.  <i>Euclid</i>—Lib 1.  <i>Latin</i>—Principia Latina Ex 1, 30. Grammar to end of Irregular Verbs.  <i>French</i>—De Fivas. Ex 1, 37. Verbs to sect 210.  <i>German</i>—Ahn. Ex 1, 50. Grammar to sect 56.  <i>Eng Grammar</i>—Mason. Analysis of simple verse.  <i>Etymology</i>—Latin Roots to end of letter "R."  <i>Composition</i>—On some familiar subject.  <i>History, British</i>—Previous to House of Brunswick.  <i>History, Canadian</i>—Outlines, Canada under the French.  <i>Geography</i>—South America, Europe and Asia.</p>	<p><i>Arithmetic</i>—Review of whole work. Problems.  <i>Algebra</i>—ditto  <i>Euclid</i>—Lib 1 and 2, with Exercises.  <i>Latin</i>—Cicero, Catiline, 2, 3 and 4, Virgil's Eclogues. Grammar, Composition.  <i>French</i>—De Fivas Reader, Souvestre, Grammar.  <i>German</i>—Adler's Reader, Parts. Grammar.  <i>Eng Grammar</i>—Mason and Angus.  <i>Etymology</i>—  <i>Composition</i>—  <i>Eng Literature</i>—Traveller and Elegy.  <i>History</i>—British, Canadian and Roman, [2nd Punic War to death of Augustus.  <i>Geography</i>—Intermediate Work.  <i>Natural Philosophy</i>—Statics &amp; Hydrostatics.</p>

In Forms I, II and III, Written Examinations upon the subjects indicated above, will be held every December and July, when only those pupils who have obtained 25 per cent of each subject and 40 per cent. of the whole number of marks will be promoted.

11 English Classics  
 1 30 Euclid  
 2 30 Latin  
 3 05 French

English Classics  
 Mathematics  
 Latin  
 French  
 Science

English  
 History  
 Latin  
 Science

Composition and Dict.  
 WRITTEN EXAMINATIONS

MONDAY.	TUESDAY.	WEDNESDAY.	THURSDAY.	FRIDAY
---------	----------	------------	-----------	--------

**LOWER SCHOOL.**

**FIRST FORM.**

9 (4) Eng Grammar & Ety	(1) Geography & Bk Keep	(4) Eng Grammar & Ety	(4) Geography & Bk Keep	(4) Eng Gram and Com
10 (1) Arithmetic	(1) Latin	(1) Arithmetic	(1) Latin	(4) Arithmetic
11 (4) English History	(4) Algebra	(4) English History	(4) Algebra	(4) Latin
1 30 (2) French	(4) Reading	(2) French	(4) Reading	<b>WRITTEN EXAMINATIONS</b>
2 (4) Dictation	(2) French	(2) Dictation	(2) French	
2 30 (1) Latin	(4) Euclid	(4) Latin	(4) Euclid	
3 05 (1) Writing	(4) Euclid	(1) Writing	(4) Euclid	
3 30 (4) Writing	(4) Writing		(4) Writing	

**SECOND FORM.**

9 (3) Eng Grammar and Ety	(1) Algebra	(3) Eng Grammar and Ety	(1) Algebra	(3) Greek & Eng Compos'n
10 (2) Latin	(2) Geography and Writing	(2) Latin	(4) Geography and Writing	(2) Latin
11 (1) Arithmetic	(2) Latin	(1) Arithmetic	(2) Latin	(4) Arithmetic
1 30 (3) French	(2) French	(2) French	(2) French	<b>WRITTEN EXAMINATIONS</b>
2 (3) German	(4) Reading	(2) German	(4) Reading	
2 30 (3) Canadian History	(1) Natural Philosophy	(3) Book-keeping	(4) Natural Philosophy	
3 05 (3) Greek	(3) Euclid	(3) Greek	(3) Euclid	
3 30 (4) Dictation	(3) English History	(4) Dictation	(3) English History	

**THIRD FORM.**

9 (2) Latin	(2) Latin and German	(2) Latin	(2) Latin and German	(2) French and Eng Comp
10 (3) Arithmetic	(3) Eng Grammar and Ety	(3) Arithmetic	(3) Eng Grammar and Ety	(1) Latin
11 (2) French	(1) Algebra	(2) French	(7) Algebra	(1) Arithmetic
1 30 (4) Geography	(1) Euclid	(4) Geography	(4) Euclid	(3) Latin
2 (3) English Literature	(3) English History	(3) English Literature	(3) Dictation	<b>WRITTEN EXAMINATIONS</b>
2 30 (4) Dictation	(2) German	(4) Canadian History	(4) Chemistry	
3 05 (4) Canadian History	(2) Chemistry	(3) Book-keeping		
3 30 (3) Book-keeping	(2) Chemistry			

**FOURTH FORM.**

9 (1) Algebra	(3) Arithmetic	<b>AS MONDAY</b>		(1) Algebra
10 (4) Geography	(2) French			
11 (3) English Classics	(3) English Grammar	<b>AS TUESDAY</b>		(3) Arithmetic
1 30 (1) Euclid	(3) History			
2 30 (2) Latin	(2) Latin and Nat Philos	<b>AS MONDAY</b>		(2) Comp and Dictation
3 05 (2) Latin & Book-keeping	(2) Latin and Nat Philos			
3 30 (2) French and Nat Philos	(2) Chemistry	<b>AS TUESDAY</b>		(2) Comp and Dictation

**UPPER SCHOOL.**

9 Greek and Algebra	(3) Arithmetic	<b>AS MONDAY</b>		(1) Algebra
10 Ancient Geography	(2) French			
11 English Classics	(3) English Grammar	<b>AS TUESDAY</b>		(3) Arithmetic
1 30 Euclid	(3) History			
2 30 Latin	(2) Latin and Nat Philos	<b>AS MONDAY</b>		(2) Comp and Dictation
3 05 Latin & Book-keeping	(2) Latin and Nat Philos			
3 30 French and Nat Philos	(2) Chemistry	<b>AS TUESDAY</b>		(2) Comp and Dictation

the Coun-

llows: -

mar, [Ar-

Reader. p 55.

l Affixes. ting. elli.

Problems.

gil's Eclo-

rammar. mar.

man, [2nd

tics.

will be cent of

*Special Classes are organized for those who are Candidates for Teachers' Certificates.*

*Pupils reading for University, Law and Medical Examinations receive the most careful attention.*

*Students preparing for any Examination are required to take only the subjects embraced in such Examination.*

*The school is well equipped with Maps, Chemical and other Apparatus ; the instruction in Science being made as practical as possible.*

*Tuition free, and board in respectable houses can be obtained at moderate Rates.*

For further information apply to the Head Master.



---

Stratford Times Power Press Print.

J. D. Barnett



