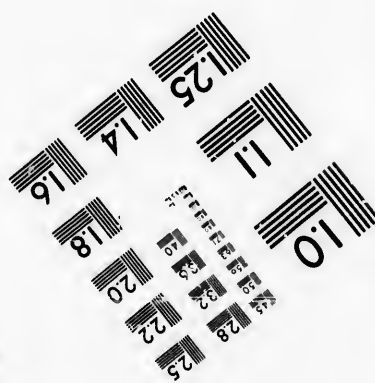
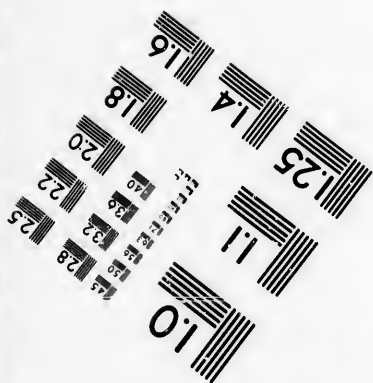
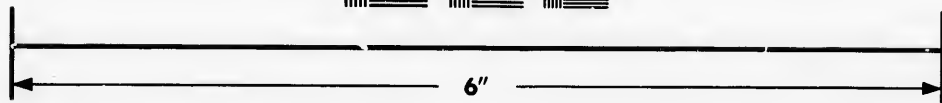
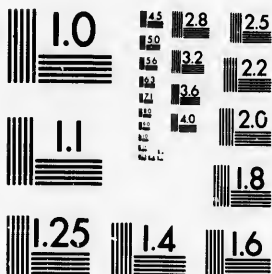


**IMAGE EVALUATION
TEST TARGET (MT-3)**



**Photographic
Sciences
Corporation**

23 WEST MAIN STREET
WEBSTER, N. Y. 14580
(716) 872-4503



**CIHM/ICMH
Microfiche
Series.**

**CIHM/ICMH
Collection de
microfiches.**



Canadian Institute for Historical Microreproductions / Institut canadien de microreproductions historiques



© 1986

Technical and Bibliographic Notes/Notes techniques et bibliographiques

The Institute has attempted to obtain the best original copy available for filming. Features of this copy which may be bibliographically unique, which may alter any of the images in the reproduction, or which may significantly change the usual method of filming, are checked below.

L'Institut a microfilmé le meilleur exemplaire qu'il lui e été possible de se procurer. Les détails de cet exemplaire qui sont peut-être uniques du point de vue bibliographique, qui peuvent modifier une image reproduite, ou qui peuvent exiger une modification dans la méthode normale de filmage sont indiqués ci-dessous.

- Coloured covers/
Couverture de couleur
- Covers damaged/
Couverture endommagée
- Covers restored and/or laminated/
Couverture restaurée et/ou pelliculée
- Cover title missing/
Le titre de couverture manque
- Coloured maps/
Cartes géographiques en couleur
- Coloured ink (i.e. other than blue or black)/
Encre de couleur (i.e. autre que bleue ou noire)
- Coloured plates and/or illustrations/
Planches et/ou illustrations en couleur
- Bound with other material/
Relié avec d'autres documents
- Tight binding may cause shadows or distortion along interior margin/
La reliure serrée peut causer de l'ombre ou de la distorsion le long de la marge intérieure
- Blank leaves added during restoration may appear within the text. Whenever possible, these have been omitted from filming/
Il se peut que certaines pages blanches ajoutées lors d'une restauration apparaissent dans le texte, mais, lorsque cela était possible, ces pages n'ont pas été filmées.
- Additional comments: [Printed ephemera] [4] p.
Commentaires supplémentaires:

- Coloured pages/
Pages de couleur
- Pages damaged/
Pages endommagées
- Pages restored and/or laminated/
Pages restaurées et/ou pelliculées
- Pages discoloured, stained or foxed/
Pages décolorées, tachetées ou piquées
- Pages detached/
Pages détachées
- Showthrough/
Transparence
- Quality of print varies/
Qualité inégale de l'impression
- Includes supplementary material/
Comprend du matériel supplémentaire
- Only edition available/
Seule édition disponible
- Pages wholly or partially obscured by errata slips, tissues, etc., have been refilmed to ensure the best possible image/
Les pages totalement ou partiellement obscurcies par un feuillet d'errata, une pelure, etc., ont été filmées à nouveau de façon à obtenir la meilleure image possible.

This item is filmed at the reduction ratio checked below/
Ce document est filmé au taux de réduction indiqué ci-dessous.

10X	12X	14X	16X	18X	20X	22X	24X	26X	28X	30X	32X
<input type="checkbox"/>	<input type="checkbox"/>	<input type="checkbox"/>	<input type="checkbox"/>	<input type="checkbox"/>	<input type="checkbox"/>	<input type="checkbox"/>	<input checked="" type="checkbox"/>	<input type="checkbox"/>	<input type="checkbox"/>	<input type="checkbox"/>	<input type="checkbox"/>

The copy filmed here has been reproduced thanks to the generosity of:

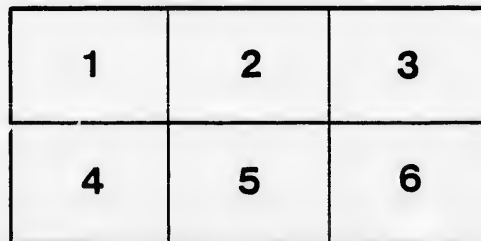
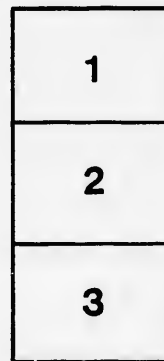
D. B. Weldon Library
University of Western Ontario
(Regional History Room)

The images appearing here are the best quality possible considering the condition and legibility of the original copy and in keeping with the filming contract specifications.

Original copies in printed paper covers are filmed beginning with the front cover and ending on the last page with a printed or illustrated impression, or the back cover when appropriate. All other original copies are filmed beginning on the first page with a printed or illustrated impression, and ending on the last page with a printed or illustrated impression.

The last recorded frame on each microfiche shall contain the symbol \rightarrow (meaning "CONTINUED"), or the symbol ∇ (meaning "END"), whichever applies.

Maps, plates, charts, etc., may be filmed at different reduction ratios. Those too large to be entirely included in one exposure are filmed beginning in the upper left hand corner, left to right and top to bottom, as many frames as required. The following diagrams illustrate the method:



L'exemplaire filmé fut reproduit grâce à la générosité de:

D. B. Weldon Library
University of Western Ontario
(Regional History Room)

Les images suivantes ont été reproduites avec le plus grand soin, compte tenu de la condition et de la netteté de l'exemplaire filmé, et en conformité avec les conditions du contrat de filmage.

Les exemplaires originaux dont la couverture en papier est imprimée sont filmés en commençant par le premier plat et en terminant soit par la dernière page qui comporte une empreinte d'impression ou d'illustration, soit par le second plat, selon le cas. Tous les autres exemplaires originaux sont filmés en commençant par la première page qui comporte une empreinte d'impression ou d'illustration et en terminant par la dernière page qui comporte une telle empreinte.

Un des symboles suivants apparaîtra sur la dernière image de chaque microfiche, selon le cas: le symbole \rightarrow signifie "A SUIVRE", le symbole ∇ signifie "FIN".

Les cartes, planches, tableaux, etc., peuvent être filmés à des taux de réduction différents. Lorsque le document est trop grand pour être reproduit en un seul cliché, il est filmé à partir de l'angle supérieur gauche, de gauche à droite, et de haut en bas, en prenant le nombre d'images nécessaire. Les diagrammes suivants illustrent la méthode.

rrata
to

pelure,
n à

Fit Your Feet!

Like Gloves fit your hands. That's what customers say about our patent footless Bicycle Hose; then they're comfortable, clean and economical. Best imported qualities in the new colorings at

95c., \$1.00, \$1.25, \$1.50.

BOUGHNER, Haberdasher,

160 DUNDAS STREET.

Try



Slater Bros.

The Leading Tailors.....

FOR YOUR SUMMER SUIT.

399 Richmond St.

TELEPHONE 844.

Economy & Style
...IN SHOES...

Pocock Bros.

Shoe Leaders

Control the Slater \$3, \$4 and \$5 Gents' Shoes. They are the best that money, push and brains can produce. Also Ladies' and Children's Footwear in all the popular 1898 styles.

POCOCK BROS.,
140 Dundas St.



Grand Opera House

A. E. ROOTE, Manager.

PROGRAMME

Tuesday Evening
April 19th, '98.

TESTIMONIAL

Benefit

TENDERED TO

Mrs. W. D. Emerson

BY THE

CITIZENS OF
LONDON

J. H. Gatecliff

City Butcher.

Fresh and Salt Meats, Beef, Mutton, Pork, Ham, Lard, Sausages, Etc., of the best quality always on hand.

GAME IN SEASON.

DUNDAS STREET,
2 Doors West of Wellington St.
TELEPHONE 477.

Markinson & Co.

384 Richmond St.

...DEALERS IN...

Gas Stoves,
Oil Stoves,
Refrigerators,
House
Furnishing
Goods, &
Happy Thought
Ranges.

A. SCREATON & CO.

FASHIONABLE TAILORS.

GOODS RIGHT!

STYLES RIGHT!

PRICES RIGHT!

A. SCREATON & CO.



The finest line of Imported and Domestic Woollens in Western Ontario.

J. S. BROWN & CO.

Headquarters for.....

Ladies' and Gents'

Fine American Footwear.

'PHONE 881.

.....145 DUNDAS ST.

Scandrett Bros.

.....WHOLESALE & RETAIL.....

Grocers, Wine and Spirit Merchants.

176 & 177 DUNDAS STREET, LONDON, ONT.

'PHONE 483.

Drink



From the
only Onyx
Fountain
in the City
with glass
syrup jars.

**BRADFORD &
HODGINS....**

.... Dundas St.

**Shannon
and
Nicholson
Artistic...
Photographers**

'PHONE 571.
201 Dundas Street, LONDON.

AMATEUR'S NEEDS ATTENDED TO.



Programme...



OVERTURE,

MR. FRED. L. EVANS' ORCHESTRA.

CHARACTERISTIC DANCES—HIGHLAND FLING AND
SAILORS' HORNPIPE.

LITTLE FLORENCE SMALL.

SOPRANO SOLO, "My Lady's Bower," *Hope Temple*

MISS MARIAN HUTCHINSON.

PIANO SOLO, "Norwegian Wedding March," *Grieg*

MR. W. A. BLEUTHNER.

SOLO, "Across the far blue hills, Marie," *Blumenthal*

MRS. H. DE M. HARVEY.

XYLOPHONE SOLO, "The Vitiscope," *D. Mollat*

MR. HARRY McKENNA.

(Mr. McKenna will be accompanied by Mr. Fred.
L. Evans' Orchestra.)

RECITATIVE } "An anxious fear comes o'er me,"
AND BALLAD, } "A father's love," (Lurline) *Wallace*

MR. J. T. DALTON.

THE COMEDY FAVORITES. . . .

WALSH AND ALLEN,

will here introduce a laughable Dutch Dialect Sketch.

MALE QUARTETTE, "My home is the sea," *Bartlett*

THE IMPERIAL QUARTETTE.



Do You Smoke?

If so, call and see my
line of goods.



Cigars,
Pipes,
Pouches,
Etc.

Don Lucas

The best 5 cent Cigar
in the City.

W. J. PORTWOOD

Tobacconist.

394 RICHMOND ST., OPP. CITY HALL.

**New
York
Store**

125 DUNDAS STREET.
NO. 9, MARKET SQUARE.

TURVILLE BROS.

**Fancy and
General + Grocers.**

Central Hardware

'PHONE 588.

211 DUNDAS ST.



The Finest Assortment of.....

**Fishing Tackle and
Sporting Goods**

.....Of all Descriptions, at

GEORGE TAYLOR & SON'S.

CANNOT BE DONE AT HOME FOR THE MONEY.

Table Covers, Napkins, Sheets, Pillow Slips, Towels, Rollers.

50 OF THE ABOVE PIECES LAUNDRIED FOR 50c.

Work Called for and DELIVERED to any part of the City "FREE" by the

PARISIAN STEAM LAUNDRY CO.,

Telephone 559.

J. K. SPRY, Manager.

Spittal,
Sabine
& Co.

HATTERS.

RIDE AN EASY-RUNNING...

Newport or
Arlington...

BICYCLE

Cooper & Co.,

388 Richmond St.,

OPPOSITE CITY HALL.

REPAIRING, VULCANIZING,
ENAMELLING, ETC.

Programme...

THE COSTELLOS.

SONG, "I love you in the same old way," *Bratton*

MR. W. E. COLLINS

THE RENOWNED EQUILIBRIST. . . .

WM. SCOTT,

in daring feats upon the Slack Wire and Trapeze.

BALLAD, "Mary of Argyle," *Miss Nelson*

MR. REGINALD CHRISTIAN.

WALSH AND ALLEN

will close the evening's entertainment with a refined
Scotch Dialect Travesty on the topics of the
day, introducing a

BURLESQUE HIGHLAND FLING.

STAGE MANAGER, MR. L. G. MERCER

NOTE.

A MATCHLESS BELL *Orchestral Piano* has been
loaned for this occasion.

The above distinguished coterie of artists volun-
teered their talented services in token of a
deep feeling of sympathy.

A CARD.

The management wishes hereby to extend thanks to
those who so kindly offered their services for this benefit,
but whose names do not appear owing to the already
unusual length of the programme.

Patronize

Harry
McKenna

The Old
Reliable
Tobacconist

225 DUNDAS ST.

J. GAMMAGE
& SONS

= Florists

215 Dundas St.

CUT FLOWERS FOR
ALL OCCASIONS.

The **Karn Piano**

Canada's High Class
AND

Reliable Piano.

London Warerooms :  226 Dundas Street.

GO TO

Reid's Hardware

AND BUY A

CRESCENT BICYCLE

And you will have the
BEST THAT IS MADE.



They are unexcelled in
QUALITY, DURABILITY AND BEAUTY.

118 DUNDAS STREET,
(NORTH SIDE.)

LONDON, - ONTARIO.

THE STORM.

GUARANTEED FOR THE YEAR.

HONEST
BICYCLES

HONEST
PRICES

LIST...

\$35.00



CASH

\$30.00

ANY TIRE. ANY SADDLE. ANY COLOR. ANY GEAR.
(LADY'S OR GENTLEMAN'S).

WE ALSO SELL

Londons, Capitols, Ohios, Genevas, Tribunes, Arenas, Alerts.

W. MANN & CO.,

189 Dundas Street, - - London, Ontario.

