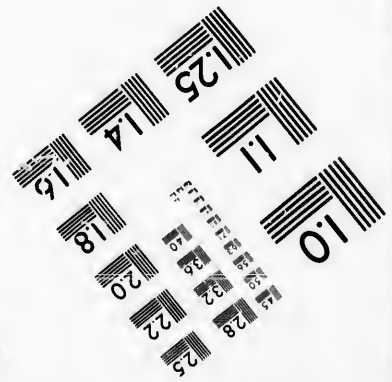
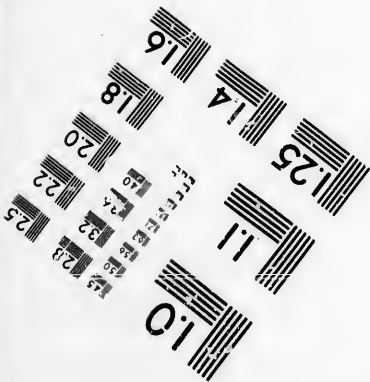
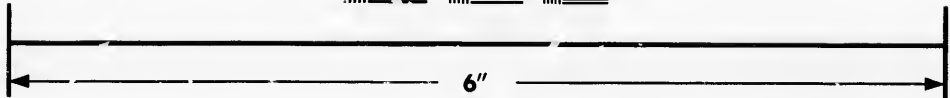
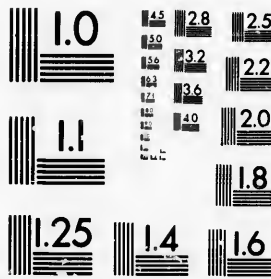


**IMAGE EVALUATION
TEST TARGET (MT-3)**



**Photographic
Sciences
Corporation**

23 WEST MAIN STREET
WEBSTER, N.Y. 14580
(716) 872-4503

25
22

**CIHM/ICMH
Microfiche
Series.**

**CIHM/ICMH
Collection de
microfiches.**



Canadian Institute for Historical Microreproductions / Institut canadien de microreproductions historiques

© 1985

Technical and Bibliographic Notes/Notes techniques et bibliographiques

The Institute has attempted to obtain the best original copy available for filming. Features of this copy which may be bibliographically unique, which may alter any of the images in the reproduction, or which may significantly change the usual method of filming, are checked below.

L'Institut a microfilmé le meilleur exemplaire qu'il lui a été possible de se procurer. Les détails de cet exemplaire qui sont peut-être uniques du point de vue bibliographique, qui peuvent modifier une image reproduite, ou qui peuvent exiger une modification dans la méthode normale de filmage sont indiqués ci-dessous.

- | | |
|------------------------------------------------------------------------------------------------------------------------------------------------------------------------------------------------------------------------------------------------------------------------------------------------------------------------------------------------|--------------------------------------------------------------------------------------------------------------------------------------------------------------------------------------------------------------------------------------------------------------------------------------------------------------------------------------------|
| <input type="checkbox"/> Coloured covers/
Couverture de couleur | <input type="checkbox"/> Coloured pages/
Pages de couleur |
| <input type="checkbox"/> Covers damaged/
Couverture endommagée | <input type="checkbox"/> Pages damaged/
Pages endommagées |
| <input type="checkbox"/> Covers restored and/or laminated/
Couverture restaurée et/ou pelliculée | <input type="checkbox"/> Pages restored and/or laminated/
Pages restaurées et/ou pelliculées |
| <input type="checkbox"/> Cover title missing/
Le titre de couverture manque | <input type="checkbox"/> Pages discoloured, stained or foxed/
Pages décolorées, tachetées ou piquées |
| <input type="checkbox"/> Coloured maps/
Cartes géographiques en couleur | <input checked="" type="checkbox"/> Pages detached/
Pages détachées |
| <input type="checkbox"/> Coloured ink (i.e. other than blue or black)/
Encre de couleur (i.e. autre que bleue ou noire) | <input type="checkbox"/> Showthrough/
Transparence |
| <input type="checkbox"/> Coloured plates and/or illustrations/
Planches et/ou illustrations en couleur | <input type="checkbox"/> Quality of print varies/
Qualité inégale de l'impression |
| <input type="checkbox"/> Bound with other material/
Relié avec d'autres documents | <input type="checkbox"/> Includes supplementary material/
Comprend du matériel supplémentaire |
| <input type="checkbox"/> Tight binding may cause shadows or distortion
along interior margin/
La reliure serrée peut causer de l'ombre ou de la
distorsion le long de la marge intérieure | <input type="checkbox"/> Only edition available/
Seule édition disponible |
| <input type="checkbox"/> Blank leaves added during restoration may
appear within the text. Whenever possible, these
have been omitted from filming/
Il se peut que certaines pages blanches ajoutées
lors d'une restauration apparaissent dans le texte,
mais, lorsque cela était possible, ces pages n'ont
pas été filmées. | <input type="checkbox"/> Pages wholly or partially obscured by errata
slips, tissues, etc., have been refilmed to
ensure the best possible image/
Les pages totalement ou partiellement
obscurcies par un feuillet d'errata, une pelure,
etc., ont été filmées à nouveau de façon à
obtenir la meilleure image possible. |
| <input checked="" type="checkbox"/> Additional comments: /
Commentaires supplémentaires: | This copy is a photoreproduction. |

This item is filmed at the reduction ratio checked below/
Ce document est filmé au taux de réduction indiqué ci-dessous.

10X	14X	18X	22X	26X	30X
<input type="checkbox"/>	<input type="checkbox"/>	<input type="checkbox"/>	<input type="checkbox"/>	<input checked="" type="checkbox"/>	<input type="checkbox"/>
12X	16X	20X	24X	28X	32X

The copy filmed here has been reproduced thanks to the generosity of:

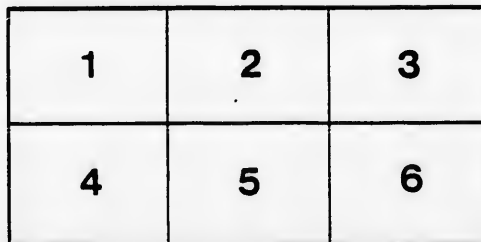
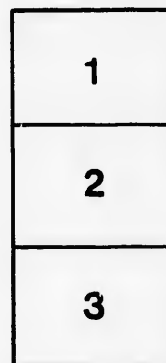
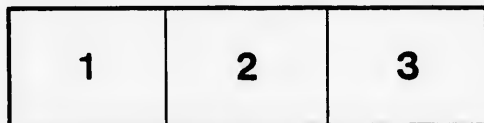
D. B. Weldon Library
University of Western Ontario
(Regional History Room)

The images appearing here are the best quality possible considering the condition and legibility of the original copy and in keeping with the filming contract specifications.

Original copies in printed paper covers are filmed beginning with the front cover and ending on the last page with a printed or illustrated impression, or the back cover when appropriate. All other original copies are filmed beginning on the first page with a printed or illustrated impression, and ending on the last page with a printed or illustrated impression.

The last recorded frame on each microfiche shall contain the symbol \rightarrow (meaning "CONTINUED"), or the symbol ∇ (meaning "END"), whichever applies.

Maps, plates, charts, etc., may be filmed at different reduction ratios. Those too large to be entirely included in one exposure are filmed beginning in the upper left hand corner, left to right and top to bottom, as many frames as required. The following diagrams illustrate the method:



L'exemplaire filmé fut reproduit grâce à la générosité de:

D. B. Weldon Library
University of Western Ontario
(Regional History Room)

Les images suivantes ont été reproduites avec le plus grand soin, compte tenu de la condition et de la netteté de l'exemplaire filmé, et en conformité avec les conditions du contrat de filmage.

Les exemplaires originaux dont la couverture en papier est imprimée sont filmés en commençant par le premier plat et en terminant soit par la dernière page qui comporte une empreinte d'impression ou d'illustration, soit par le second plat, selon le cas. Tous les autres exemplaires originaux sont filmés en commençant par la première page qui comporte une empreinte d'impression ou d'illustration et en terminant par la dernière page qui comporte une telle empreinte.

Un des symboles suivants apparaîtra sur la dernière image de chaque microfiche, selon le cas: le symbole \rightarrow signifie "A SUIVRE", le symbole ∇ signifie "FIN".

Les cartes, planches, tableaux, etc., peuvent être filmés à des taux de réduction différents. Lorsque le document est trop grand pour être reproduit en un seul cliché, il est filmé à partir de l'angle supérieur gauche, de gauche à droite, et de haut en bas, en prenant le nombre d'images nécessaire. Les diagrammes suivants illustrent la méthode.

RESOLUTIONS

To be proposed by MR. ERMATINGER, on Wednesday, 23rd June, 1847.

1. *Resolved*,—That this House views with apprehension the difficult situation in which the Trade and Commerce of this Province will be placed by the policy of the Imperial Government in withdrawing from the productive labour of its inhabitants, prospectively, all protection; thereby exposing our Agriculturists to an unequal competition with the United States in the staple articles of our trade.

2. *Resolved*,—That this abandonment of the protective policy of England towards her Colonies in general, and this Colony in particular, cannot, in the opinion of this House, operate otherwise than injuriously on the Trade and prosperity thereof; affording at the same time no corresponding benefit to our fellow subjects in Great Britain.

3. *Resolved*,—That the construction of the St. Lawrence and other costly Canals, for which Canada obtained a loan, guaranteed by the British Government, of more than £1,500,000 Sterling, was undertaken in the confident expectation that we should continue to enjoy in the British Markets, a preference for our Products, over those of Foreign Nations.

4. *Resolved*,—That one great advantage expected to be derived from the large expenditure incurred in constructing these Canals was, that the facilities thus afforded would enable us to acquire a great portion of the Carrying Trade of the Western States of America, but that this advantage would be entirely surrendered to an enterprising rival nation, by the adoption of such a change in the Imperial Navigation Laws, as would render the free navigation of the St. Lawrence a matter of necessity.

5. *Resolved*,—That this Province contains the elements for carrying on an extended and prosperous trade, if based upon the industry of its inhabitants; the fertility of its soil, the immensity of its forests, and the great extent of its inland navigation, all concur in pointing out Canada as one of the most valuable appendages of the British Crown; susceptible of affording profitable employment to a very large portion of the redundant population of the Mother Country, of furnishing the means of Ship-building to an unlimited extent, and of carrying on a valuable trade through its internal navigation; but that the extension of the principles of free trade would, in the opinion of this House, tend to divert the Commerce of this Province to the United States, and ultimately endanger its connexion with the British Crown.

6. *Resolved*,—That this House duly appreciates the Act of the Imperial Government, 9th and 10th Victoria, chapter 94, conferring upon this Colony, with other British Possessions, the power to reduce or repeal certain Duties of Customs, but is nevertheless of opinion that it is the interest of every Colony to cultivate commercial intercourse with the Parent State, and that a total equalization of duties would be at variance with this principle.

7. *Resolved*,—That this House heartily concurs in the expression contained in the 11th paragraph of a Protest made in the British House of Peers on the third reading of the Bill for the repeal of the Corn Laws, which, together with the Address of this House, at its last Session, on the subject of Wheat and Flour, fully embraces and ably advocates the views now entertained by this House on this subject:—“ 11. Because the removal of differential duties in favour of Canadian Corn “ is at variance with the Legislative encouragement held out to that Colony by Parliament, on the faith of which the Colonists have laid out large sums on the improvement of their internal navigation; and because the removal of protection will “ divert the traffic of the interior from the St. Lawrence and the British Ports of “ Montreal and Quebec, to the Foreign Port of New York; thus throwing out of “ employment a large amount of British Shipping, severing the Commercial “ interests of Canada from those of the Parent Country, and connecting those “ interests most intimately with the United States of America.”

8. *Resolved*,—That the substance of the foregoing Resolutions be embodied in an Address to Her Majesty.

