

**CIHM/ICMH
Microfiche
Series.**

**CIHM/ICMH
Collection de
microfiches.**



Canadian Institute for Historical Microreproductions / Institut canadien de microreproductions historiques

© 1984

Technical and Bibliographic Notes/Notes techniques et bibliographiques

The Institute has attempted to obtain the best original copy available for filming. Features of this copy which may be bibliographically unique, which may alter any of the images in the reproduction, or which may significantly change the usual method of filming, are checked below.

- ☐ Coloured covers/
Couverture de couleur
- ☐ Covers damaged/
Couverture endommagée
- ☐ Covers restored and/or laminated/
Couverture restaurée et/ou pelliculée
- ☐ Cover title missing/
Le titre de couverture manque
- ☐ Coloured maps/
Cartes géographiques en couleur
- ☒ Coloured ink (i.e. other than blue or black)/
Encre de couleur (i.e. autre que bleue ou noire)
- ☐ Coloured plates and/or illustrations/
Planches et/ou illustrations en couleur
- ☐ Bound with other material/
Relié avec d'autres documents
- ☒ Tight binding may cause shadows or distortion
along interior margin/
La reliure serrée peut causer de l'ombre ou de la
distortion le long de la marge intérieure
- ☐ Blank leaves added during restoration may
appear within the text. Whenever possible, these
have been omitted from filming/
Il se peut que certaines pages blanches ajoutées
lors d'une restauration apparaissent dans le texte,
mais, lorsque cela était possible, ces pages n'ont
pas été filmées.
- ☐ Additional comments:/
Commentaires supplémentaires:

L'institut a microfilmé le meilleur exemplaire qu'il lui a été possible de se procurer. Les détails de cet exemplaire qui sont peut-être uniques du point de vue bibliographique, qui peuvent modifier une image reproduite, ou qui peuvent exiger une modification dans la méthode normale de filmage sont indiqués ci-dessous.

- ☐ Coloured pages/
Pages de couleur
- ☐ Pages damaged/
Pages endommagées
- ☐ Pages restored and/or laminated/
Pages restaurées et/ou pelliculées
- ☒ Pages discoloured, stained or foxed/
Pages décolorées, tachetées ou piquées
- ☐ Pages detached/
Pages détachées
- ☒ Showthrough/
Transparence
- ☐ Quality of print varies/
Qualité inégale de l'impression
- ☐ Includes supplementary material/
Comprend du matériel supplémentaire
- ☐ Only edition available/
Seule édition disponible
- ☐ Pages wholly or partially obscured by errata
slips, tissues, etc., have been refilmed to
ensure the best possible image/
Les pages totalement ou partiellement
obscurcies par un feuillet d'errata, une pelure,
etc., ont été filmées à nouveau de façon à
obtenir la meilleure image possible.

This item is filmed at the reduction ratio checked below/
Ce document est filmé au taux de réduction indiqué ci-dessous.

10X	14X	18X	22X	26X	30X
<input type="checkbox"/>	<input type="checkbox"/>	<input type="checkbox"/>	<input checked="" type="checkbox"/>	<input type="checkbox"/>	<input type="checkbox"/>
12X	16X	20X	24X	28X	32X

The copy filmed here has been reproduced thanks to the generosity of:

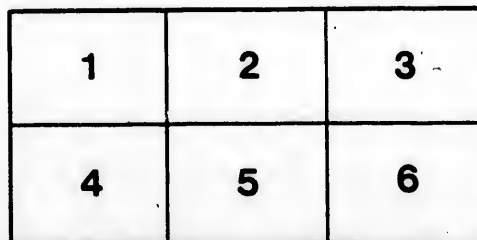
Seminary of Quebec
Library

The images appearing here are the best quality possible considering the condition and legibility of the original copy and in keeping with the filming contract specifications.

Original copies in printed paper covers are filmed beginning with the front cover and ending on the last page with a printed or illustrated impression, or the back cover when appropriate. All other original copies are filmed beginning on the first page with a printed or illustrated impression, and ending on the last page with a printed or illustrated impression.

The last recorded frame on each microfiche shall contain the symbol ➡ (meaning "CONTINUED"), or the symbol ▼ (meaning "END"), whichever applies.

Maps, plates, charts, etc., may be filmed at different reduction ratios. Those too large to be entirely included in one exposure are filmed beginning in the upper left hand corner, left to right and top to bottom, as many frames as required. The following diagrams illustrate the method:



L'exemplaire filmé fut reproduit grâce à la générosité de:

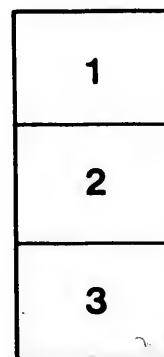
Séminaire de Québec
Bibliothèque

Les images suivantes ont été reproduites avec le plus grand soin, compte tenu de la condition et de la netteté de l'exemplaire filmé, et en conformité avec les conditions du contrat de filmage.

Les exemplaires originaux dont la couverture en papier est imprimée sont filmés en commençant par le premier plat et en terminant soit par la dernière page qui comporte une empreinte d'impression ou d'illustration, soit par le second plat, selon le cas. Tous les autres exemplaires originaux sont filmés en commençant par la première page qui comporte une empreinte d'impression ou d'illustration et en terminant par la dernière page qui comporte une telle empreinte.

Un des symboles suivants apparaîtra sur la dernière image de chaque microfiche, selon le cas: le symbole ➡ signifie "A SUIVRE", le symbole ▼ signifie "FIN".

Les cartes, planches, tableaux, etc., peuvent être filmés à des taux de réduction différents. Lorsque le document est trop grand pour être reproduit en un seul cliché, il est filmé à partir de l'angle supérieur gauche, de gauche à droite, et de haut en bas, en prenant le nombre d'images nécessaire. Les diagrammes suivants illustrent la méthode.



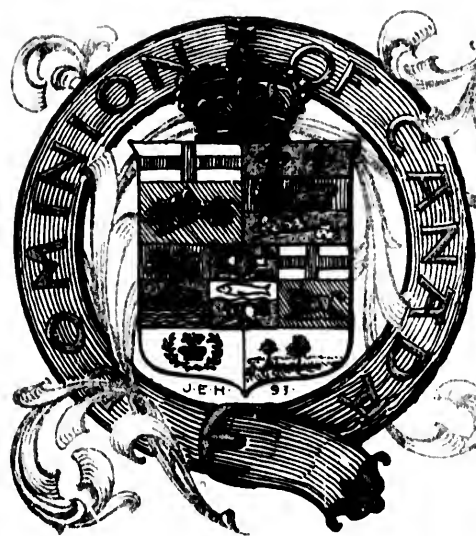
errata
to

pelure,
on à



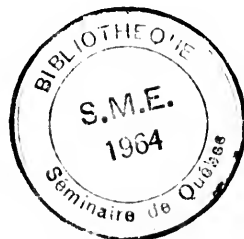
251

from march 1

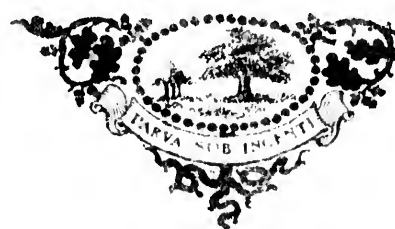


PRINCE EDWARD ISLANDS

AS A SUMMER RESORT



WHERE IT IS AND HOW TO GET THERE



Bibliothèque,
Le Séminaire de Québec,
3, rue de l'Université,
Québec 4, QUE.

HOTEL ACADIA



GRAND
TRACADIE
BEACH,

— P. E. I. —

THE LAND OF ACADIE.

This is the forest primeval. The murmuring pines and the hemlocks,
Bearded with moss, and in garments green, indistinct in the twilight,
Stand like druids of old, with voices sad and prophetic,
Stand like harpers hoar, with beards that rest on their bosoms.
Land from its rocky caverns the deep-voiced neighbouring ocean
Speaks,

This is the forest primeval; but where are the hearts that beneath it
Leaped like the roe, when he hears in the woodland the voice of the
hunterman?

Where is the thatch-roofed village, the home of Acadian farmers,
Men whose lives glided on like rivers that water the woodlands,
Darkened by shadows of earth, but reflecting an image of heaven?

Naught but tradition remains of the beautiful village of Tracadie.

THE above extracts from Longfellow's world-famous poem, most aptly describe the spot on which this hotel is placed, being the site of one of the earliest Acadian Settlements on the North Shore of Prince Edward Island. The Hotel with its background of forest, is located on a point of land one side of which is bounded by the waters of the Gulf; the other by those of a beautiful landlocked bay; thus affording facilities for both surf and still-water bathing, boating and fishing. The waters teeming with Mackerel, Cod, Haddock, Halibut, Salmon, Herring, Trout, Silver Perch, Smelts, Flounders, Lobsters and other fish; and the surrounding beaches, meadows and woods, abounding with game, wild flowers and fruits.

The House has wide airy halls, passages and corridors; pleasant rooms whose windows command fine views of Ocean and Bay. This being its first season the furnishings are all fresh and new. Good arrangements for heating house on cool days and evenings.

The Cuisine will be under the supervision of a normal Graduate of the famed Boston Cooking School, and no pains or expense will be spared to provide a good liberal table of WELL COOKED, WELL SERVED FOOD.

The water used is from a large boiling spring on the premises.

A Band of Skilled Musicians from the New England Conservatory of Music, will furnish Music throughout the season for Ball-Room and Concert.

Extensive grounds, suitable for Lawn Tennis, Croquet, Golf, Polo, Base Ball and Cricket. Bowling Alley, ~~Shooting Gallery.~~ Good Billiard and Pool Tables in Billiard Hall. Cool Shady Groves. Swings. Good Boats, well manned, for outside and inside fishing and sailing. Fishing outfits and bathing suits for sale and to let. Also, good livery for riding and driving at reasonable rates. **Telephone & Daily Mail.**

Only four miles from R. R. Station; 13 from Charlottetown. Two trains each day, which will be met by carriages from the hotel. Round trip tickets from Charlottetown, including railway and carriage fare, to hotel and return, \$1.00.

House open for guests June 15th. Arrangements for Rooms should be made early in advance.

Terms \$2.00 per day. Special low rates for lengthened periods.

Address,

H. L. HALL,

Hotel Acadia, Grand Tracadie,

Or care U. S. Consul,

Charlottetown, P. E. I.

JOHN COOMBS
Printer
Charlottetown
See Page 58



DIE
EACH,

CADIE.

scribe the
Acadian
with its
by the
affording
teeming
Smelts,
woods,

s whose
furnish-
ays and

of the
to pro-

Musto.

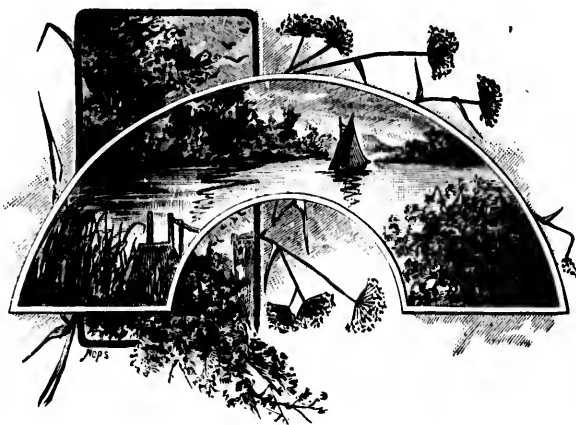
all and
Billiard
inside
good
lis.

h day,
town,

arly in

E. I.

"The Garden of the Gulf."



PRINCE EDWARD ISLAND, the smallest of the Provinces of the Dominion of Canada, and formerly known as the Isle St. Jean (under the French régime), was discovered by Sebastian Cabot on the 24th day of June, 1497, being the anniversary of the ~~death~~ of St. John the Baptist, in whose honor it was thus named. In 1799, its name was changed to Prince Edward Island, in honor of the Duke of Kent (the father of Queen Victoria), then Commander of the British forces at Halifax, N. S.

birth

It lies in the south-eastern part of the Gulf of St. Lawrence, and is in the shape of an irregular crescent, measuring about one hundred and fifty miles from the extremity of East Point to the lofty wedge of red sandstone known and dreaded of seamen as the North Cape. It is much indented by broad harbors and tidal rivers; varies in width from four to thirty miles, and contains about two thousand one hundred and thirty-three square miles.

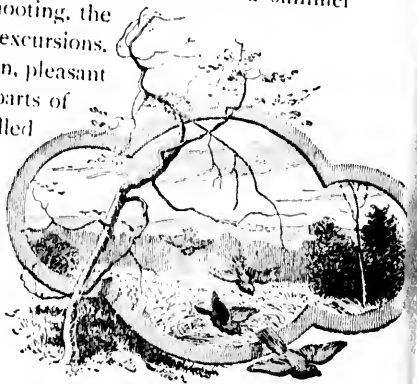
From the sea it presents an almost tropical appearance in summer, with its beaches and cliffs of reddish sand and sandstone, contrasting strongly with the living green of its thick grassy turf, and the mingling verdure of nearly every species of soft and hard woods known to the Northern States and Canada.



ALTHOUGH surrounded by the sea, the climate of the Island is very fine, being almost absolutely exempt from fogs, and presenting during the whole year a mean temperature singularly free from extremes of heat and cold, and especially from the sudden changes experienced on the mainland, in both Canada and New England.

For persons suffering from lung diseases, hay fever, asthma, and general debility, it can hardly be excelled, and as a summer resort, offering beautiful scenery, good shooting, the best sea and river fishing, charming excursions, quaint and interesting tours of observation, pleasant social intercourse with tourists from all parts of the United States and Canada, it is rivalled by few and excelled by none.

Settled by the French late in the seventeenth or early in the eighteenth century, it soon attracted a respectable number of settlers from Bretagne, Picardy and Normandy, whose produce and grains were in great demand for the fortified city of Louisbourg in Cape Breton (then L'Isle Royale, or the Royal Island). In 1745 many of these settlers were expatriated after the fall of Louisbourg, but after the return of this citadel to France the Island was again peopled, and when in 1755 Louisbourg was recaptured by General Wolfe, it would seem that only a few of these poor farmers were removed from their homes. Some, however, were thus deported, especially those about Charlottetown (then *Port La Joie*), and the adjoining coast. The early English and Scotch settlers came upon many deposits of arms, furniture, cooking utensils, etc. (many of them even now to be found), hidden in the woods by families who fled from the troops sent to tear them from their homes. Some ten thousand of the descendants of those who remained, and of the Acadians who escaped the deportation at Minas, Blomidon and other parts of Nova Scotia, yet reside in the province. They are still to a great extent a people set apart from the rest of the population, living in their own villages, intermarrying early with their own race, speaking the French tongue, and keeping up in dress, traditions, customs, etc. the simple, hospitable, kindly traits depicted in *Evangeline*. Thus, to a great extent, in certain villages, the women and maidens wear "the Norman cap and the kirtle of homespun;" the young girl begins at an early age to spin, weave and sew the coarse white linen and heavy deep-tinted woolens which she shall bring with her to the man of her



the Island is
and present-
larly free from
the sudden
ada and New
ever, asthma,
is a summer

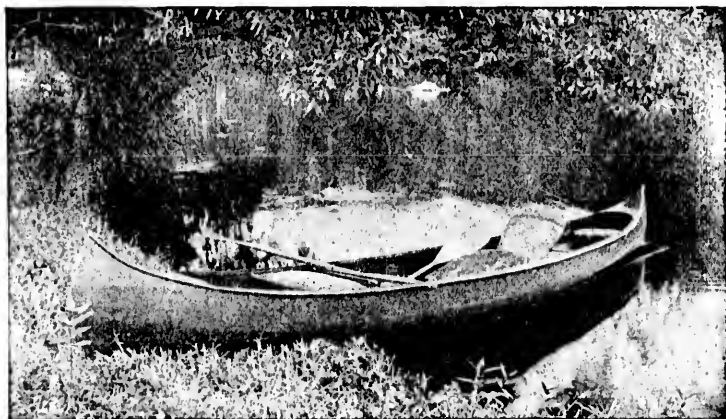


ttlers were
his citadel
ouisbourg
of these
were thus
(*foie*), and
ne upon
of them
ed from
sand of
escaped
tia, yet
et apart
arrying
up in
epicted
es, the
rtle of
spin,
tinted
f her

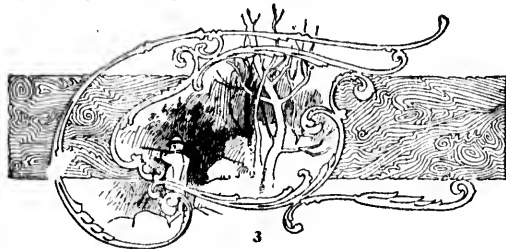
- THE GARDEN OF THE GULF.

choice; and the settlement still delights in joining to start a young couple in their married life, to raise a barn or house, and to take their pay in an hour or two of dancing to a simple fiddle, and a supper of bread, tea, potatoes and meat, or fish.

The old men still have their tales of the dreaded "Loup-garou in the forest," and "of the White Letiche, the ghost of a babe which, unchristened," wanders wailing in the forest-bordered valleys, or haunts the chambers of happier living children. Peaceful, economical, industrious, in a way belonging to a past age, these Acadians are a peculiar people, full of interest to every traveller fresh from the feverish press of business, or the artificial but onerous demands of modern society.



A remnant of the once powerful Micmac tribe of Indians, some three hundred in number, still haunt the northern harbors, and to some extent retain the garb and habits of their warlike ancestors. Many of the men still wear the moccasin, use the *waggon*, or Indian knife, prefer the *quetan*, or bark canoe to the white man's boat, and love to talk among themselves of the great days of the past, and the coming of the Indian Messiah. They are keen hunters, and faithful servitors for moderate pay, and a few days with one of them, among the trout, duck and plover, is generally a time to be long and pleasantly remembered.





SHEEP-WASHING DAY ON THE FARM.



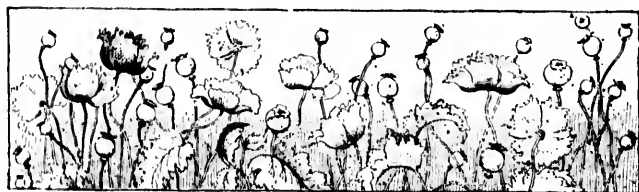
SHEEP-WASHING DAY ON THE FARM.

IN THE early days of its possession by the English crown, the Island was surveyed out into a number of lots and divided by a kind of lottery among the friends and supporters of the government of the day, on condition that the grantee should within a certain term of years establish a given number of settlers on his territory.

Nearly all the grantees attempted to do this, and nearly forty-nine thousand Scotch, twenty-five thousand English and twenty-five thousand Irish, now forming a part of the population, are largely descended from these early settlers. The Scotch were largely reinforced from the "broken clans" and Jacobite adherents who, after the fatal battle of Culloden in 1745, found little countenance or favor from the English government. McDonald, McGregor, McNeill, Stewart, and the like, are common names in many sections, and even Man, Skye, Bute, and other northern Isles, sent many representatives in the last century to the Island of Saint John. For nearly one hundred years in many localities the Gaelic tongue has been spoken, and the relics and legends, traditions, sayings and family pride of Highlander and Islesman handed down from father to son.

Other Scotch settlers, however, were from Lowland parts, and brought with them their strong adherence to "the kirk," their broad Scots' tongue, homely virtues, steady industry and economy.

So, too, the Irish came from many counties; from the thrifty valleys of Munster and Connaught to the gates of Derry, and the isles of the Irish Sea. They too, often spoke the Celtic tongue, and were slow to forget either the language, the religion, the virtues or the prejudices of their ancestors.





A MODERN PICNIC GROUND.



MUCH, as we have tried to describe in the preceding chapters, was originally the curious *melange* of humanity which ensured a varied history and much trouble for the colony, with some bloodshed and a great deal of bad feeling. The advent of the railway and the consequent building up of small villages; the confederation of the Province into the Dominion, making it necessary for the people to work more together for recognition at Ottawa; and the very rapid spread of education during the last century, has done much to eradicate the peculiarities of custom and race which, thirty years ago, were constant objects of interest to the tourist from the outer world.

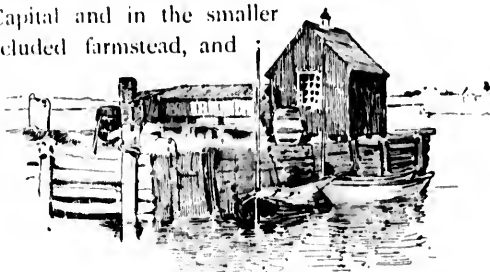


There are still, however, more of the old world customs, manners and modes of thought to be found in Prince Edward Island than in the localities made famous by Scott, Grant, Burns, Longfellow and Black; and the lover of these writers will be able to add to his memories many pleasant studies of actual life which, while neither ridiculous or unworthy, reflect faintly the waning light of vanishing races and a past century.



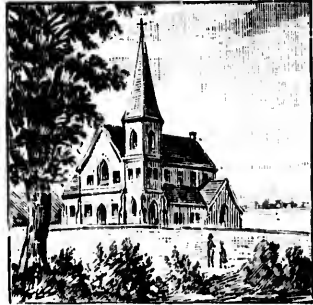
On the other hand, he will find manly strength, knowledge, enterprise, genius and culture; and womanly beauty, taste, refinement and intelligence,

not only at the Capital and in the smaller towns, but in many a secluded farmstead, and amid the rude fishing stations of the Gulf, the tourist will find everywhere a warmth of heart and a genial, hearty hospitality which is, alas! almost extinct wherever the tourist seeks new scenes and simpler pleasures.

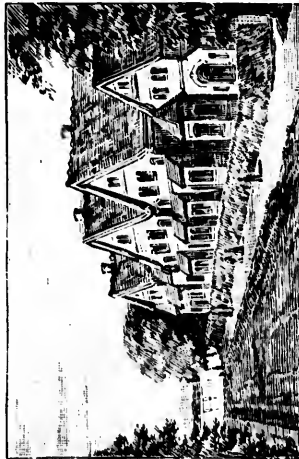




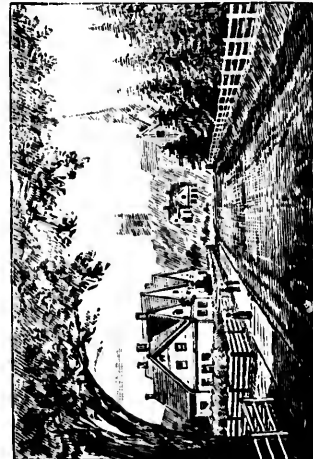
RESE C. HYNDMAN BRIGHTON



CHURCH AT STURGEON



HAWTHORN VILLAS BRIGHTON ROAD

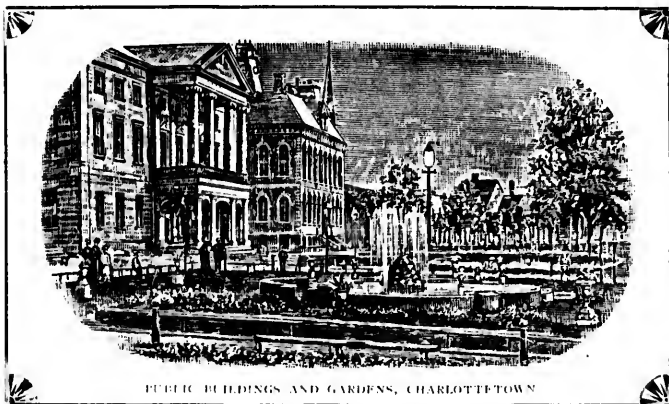


BRIGHTON ROAD CHARLOTTETOWN

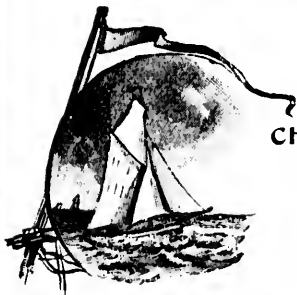


BUNDAS ESPLANADE TERRACE CHARLOT TOWN

Town and Country.

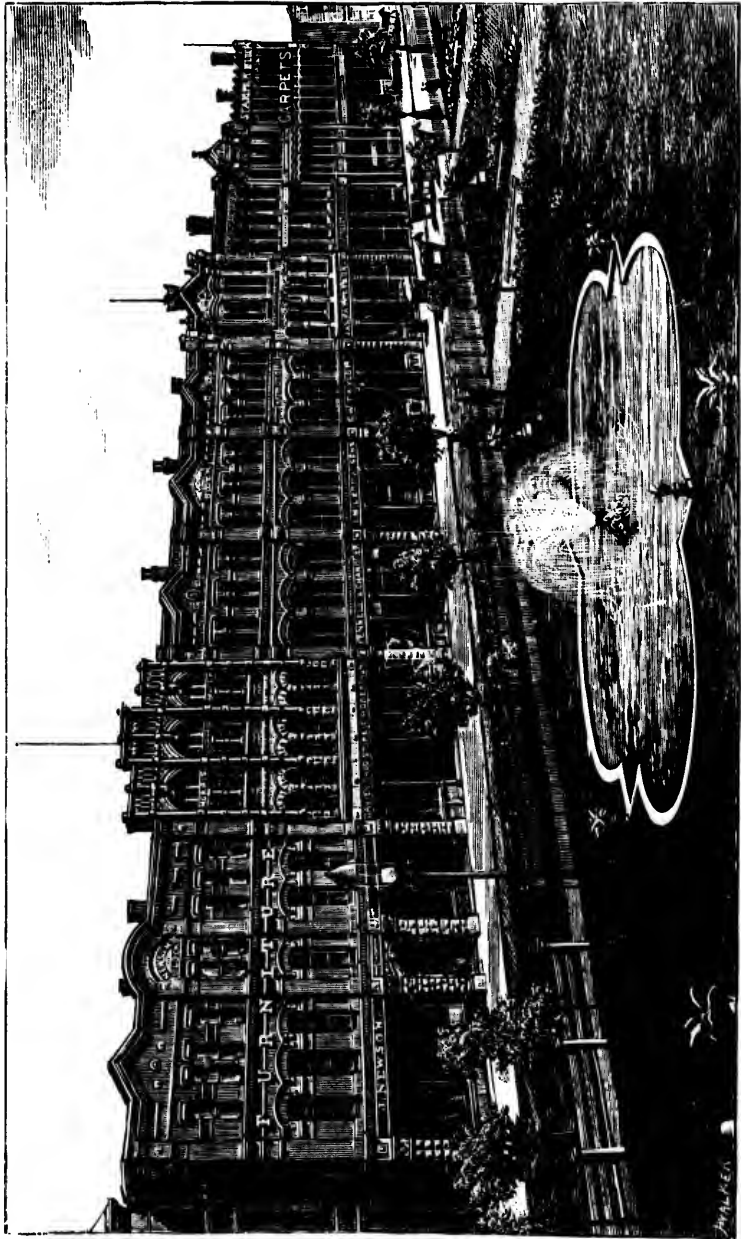


PUBLIC BUILDINGS AND GARDENS, CHARLOTTETOWN



CHARLOTTETOWN, situated on a magnificent harbor, at the head of Hillsborough Bay, where the East, North and West Rivers join before rushing between the crimson cliffs of Blockhouse and Trout Points into the ample Bay and widening Straits, dates back to about the year 1700, or possibly ten years later, when, under the name of **PORT LA JOIE** (Joy Harbor), it was founded by the French, and fortified against the English without and the Micmacs within, who were not always to be depended upon. Probably the town was but an outgrowth of the fur depots and fishing establishments of the 17th century, supplied each spring and fall by French ships and held during the long winters by a few chosen men and trappers. The remains of an old fort on the right side of the entrance probably marks the site of the early French town, although the battery was undoubtedly in repair during the wars of the Revolution and in 1812.

Captain John Rous, of "the Massachusetts Galley," removed a part of the French in 1746, and a portion of the seamen and soldiers engaged were attacked and defeated with some loss by a force of French and



VICTORIA ROW, CHARLOTTETOWN.



Indians. In 1776, an American privateer took the place, plundered the defenceless settlers, and taking on board the chief citizens, carried them to General Washington, who restored them to their homes.

Charlottetown is now a city with a population of about twelve thousand, and presents a very attractive appearance in summer, with its wide streets, large squares and shade trees. It is well lighted by electricity, its telephone lines extend to all parts of the province, and the quality of the water, supplied through its fine system of waterworks, is not excelled in the world. The town is chiefly built of wood, although some fine stone buildings, and many of brick, are to be found in the heart of the Capital. It has many stores rivalling in equipment and appearance the large business houses of the cities on the mainland. The buyers for the Charlottetown houses visit each season the European markets, and the importation of English and French goods especially has been greatly stimulated by the demand from American and Canadian tourists, who find the assortment equal to and the prices lower than in many larger cities.

Tourists will also find that in Charlottetown and Summerside they can be fitted with the most fashionable custom made clothing at about one-half the price paid for similar goods in large cities. The very finest English, Irish, Scotch and French cloths are imported direct by merchant tailors here, who now have several customers in the U. S., and the cut and finish of the garments has been highly spoken of by connoisseurs abroad. Several large ready-made clothing houses here also make a specialty of outing suits, etc., but space will not permit of particularizing. Take a good look through the advertising supplement for fuller information.

Nearly all branches of trade and industry are represented here, and the list of prepared foods, fruits, wines, liquors, cordials, etc., etc., cover almost all eatables and potables known and prized on either continent.

With newspapers, Charlottetown is well supplied, having three dailies, one semi-weekly and five weeklies; the first three containing telegraphic daily news from all quarters of the globe; in addition to which the morning editions of the leading dailies in New Brunswick and Nova Scotia are received here every evening of the day of their issue.

Charlottetown's religious, moral and educational establishments are numerous. In churches, it has two Episcopal, two Methodist, two Presbyterian, one Roman Catholic and one Baptist church; besides a Y. M. C. A., one Provincial and one R. C. college, two convents, five public and several private schools. In fraternal orders, it has two lodges and a chapter of Free and Accepted Masons, two lodges and an encampment of the Independent Order of Odd Fellows, besides Foresters, Hibernians, Orangemen, English, Irish and Scottish societies, Sons of Temperance, Good Templars and several others. The musical taste of the citizens is also well cultivated.



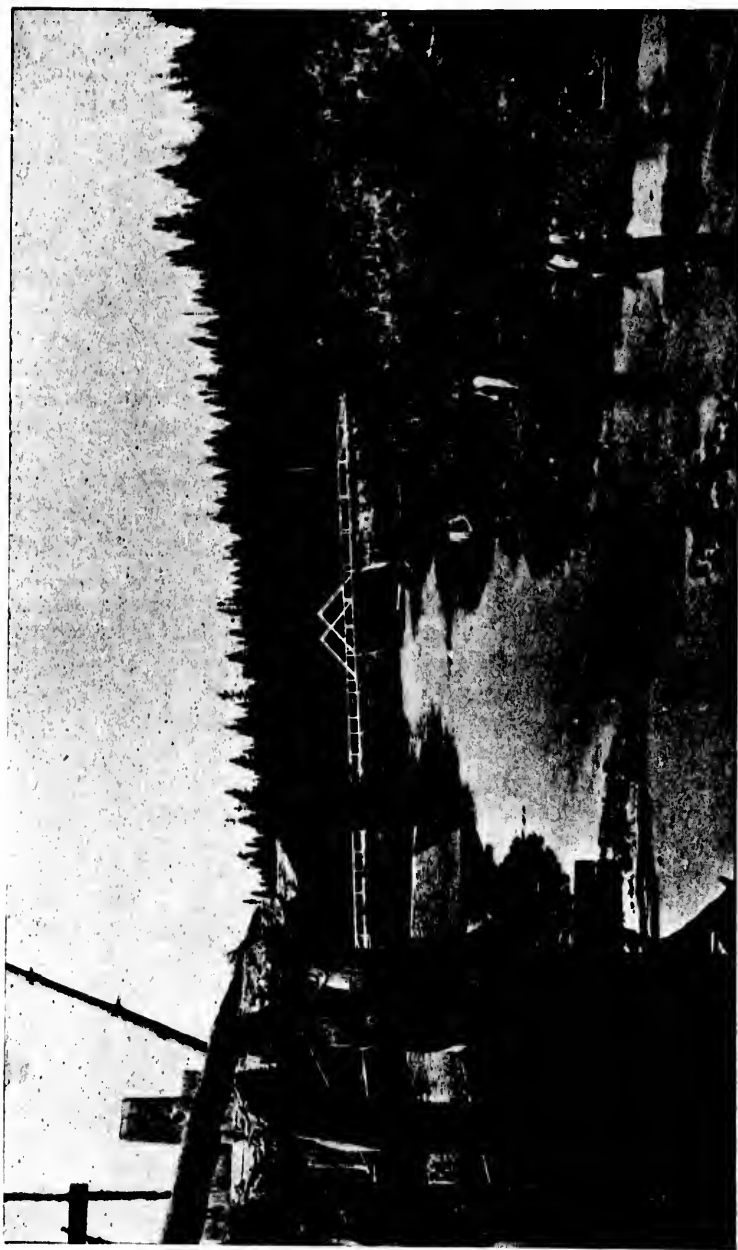
CHAPEL.—ST. JOSEPH'S CONVENT, CHARLOTTETOWN.

In the winter season really fine concerts and entertainments are given by local amateurs, while during the summer many first class musical and dramatic companies visit the City, where there is now, almost completed, a well-equipped and modern opera house, erected in connection with the Masonic Temple. Band concerts are given on certain evenings of the week in Queen Square Gardens, where the youth and beauty of Charlottetown may be seen promenading or resting on the rustic benches that surround the cooling fountain.

Of the many attractions that strike the stranger visiting Charlottetown, not the least among them is its public market. "Market Day" is one of Charlottetown's institutions. Every Tuesday and Friday the roads leading into the city are thronged with farmers, market gardeners, butchers, dairy women and fishermen, with their loads of produce, making their way to the market house and square, a place reserved by the "city fathers" for the sale of their commodities. The show of meats, vegetables, poultry, butter, eggs, berries, fresh fish, etc., displayed in the stalls of the building and on the square, has been pronounced by visitors as something unique, and the best to be seen anywhere. It is well worth an hour or so of the tourist's time to "do" the Charlottetown market.

The tourist should not bid farewell to the city before taking a trip over Charlottetown Harbor, one of the finest in America. A sail up the Hillsborough, the West, or North Rivers, or out into the bay, is one of the most delightful trips that can be experienced by those who wish a few hours' recreation combined with an invigorating breeze of pure sea air. The scenery along the shores is beautiful. On either hand are seen the fertile farms dressed in the richest green and bordered by the crimson soil of the banks and cliffs. Every opportunity is offered those who desire this form of pleasuring. Government ferry boats and inland steamers are continually making trips to and from adjoining settlements, while parties or individuals can be furnished with steam launches or sail and row boats at a small cost. A visit to Charlottetown would not be complete without taking in one of these delightful excursions.





CLARK'S MILL BROOK, LOT 37, P. E. I.



FROM THE CAPITAL, the P. E. Island Railway, many broad and well-graded roads, and several small steamers, allow the tourist to visit every part of the province, and enjoy every sport known to the provincial list except the killing of large game and extensive salmon fly-fishing.

Everywhere, almost, the railway reaches tiny stations and more pretentious villages, whence

a few miles will place the sportsman by forest streams abounding in speckled trout, or in the haunts of wild fowl and other game birds. The roads lead, like the sticks of a fan, east, west and north, through moist, cool glades, and dusky forests of evergreen carpeted with moss, trailing arbutus and maiden's hair, traversed by crystal streams or embracing deep, clear pools.

Almost invariably they lead through such sylvan scenes, fertile farmsteads and quaint settlements to the eastern coast line, where a score or more of shallow havens, reached only by narrow channels leading among dangerous shoals, break the long curving crescent of sand dunes, which marks the inner line of the winding shore.

Among these harbors may be mentioned that of Tracadie, anciently settled by a portion of the clan McDonald, a few years after the era of political intrigue and governmental persecution which succeeded the battle of Culloden, and the judicial massacres of the Second George. Many of the descendants of these people still live in the settlement, and the elder settlers retain many old traditions and stories of Highland life; the unequal struggle for Prince Charles Edward, and weird old world superstitions.

This locality, and several others on the northern coast, form most desirable resorts for the tourist and health-seeker, are central points for sportsmen's excursions, are right in the surf-bathing country, and are easily reached by rail or carriage from the city.





ON THE most desirable points along the north shore of the Island, notably Tracadie Harbor, Rustico Beach, Brackley Point, Covehead, Stanhope, etc., so as to command charming views of the Gulf and harbors, are erected commodious hotels for the accommodation of summer guests. The managers of these different resorts bring to their aid a long experience in catering to the needs, comfort and pleasure of tourists, and a firm determination to ensure a pleasant and enjoyable stay to every guest.

Cleanliness, taste and complete provision for every comfort is not wanting: the tables are furnished with every variety of meat, game and fish in their respective seasons; and the cookery is worthy of the delicious beef, mutton, pork, veal, poultry, game and fish furnished by a province which has never lost its claim to its old title of honor: "THE GARDEN OF THE GULF."

Wide piazzas and ample balconies provide for pleasant dreamy siestas and moonlit evening parties, and tennis courts, croquet lawns, swings, etc., etc., are provided.

The stables will furnish light carriages and buggies for trips to the many attractive places within a few hours' ride, and boats will visit the fishing grounds for those who wish to catch the many species of sea-fish to be found all along this coast.

Those who may desire a more quiet retreat than at the regular hotels can procure comfortable accommodation at scores of farm houses near the shore, where provision is annually made for the reception of private families and summer guests.





sea-fish to
ular hotels
s near the
of private



GOOD FISHING abounds near all of these localities. Sea perch, smelts, cod, flounders and lobsters abound in the deeper channels of the harbors, the delicious and elegantly shapen mackerel is found in perfection during the whole summer, only a mile or two from shore, and halibut, cod, haddock, and many other sea-fish are taken on the neighboring banks.

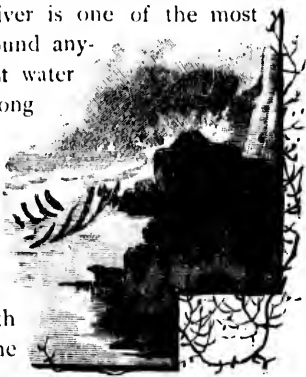
Large marshes, and a network of ponds fed by cold springs, and surrounded by boggy marsh bordered by reeds, and shut in by wooded banks, are separated from the sea by a few hundred yards of heaped up sand strewn with wreckage and the skeletons of withered trees slain by the irruption of the ever-shifting sands.

These peculiar regions are among the most weird and yet charming of localities, combining, as they do, much that is verdant, fresh and beautiful, and being in close proximity and strong contrast to most perfect examples of death and desolation.

Then fresh water lagoons, the summer resorts of myriads of herring, trout, smelts, and enormous eels; and the no less favorite feeding places of all kinds of wild-fowl, plover, snipe and woodcock, and many other species, offering to the hunter and naturalist a variety of sport, and choice specimens of every shore and inland variety, and with the neighboring fields and passes, often furnishing scores of birds to a single day's bag.

In July, delicious wild strawberries abound, and the barrens are covered with checkerberries; later on red raspberries may be had in abundance, and still later the whortle, blue and gooseberry, all large size and splendid flavor, are to be had for the picking, or purchased at ridiculously low rates.

From these sections west, excursions can be made to the Dunk River, a place noted for its trout and salmon fishing, and to several good trouting streams still further west, such as The Brae, Miminegash, and Little Pierre Jacques. Going east, into King's County, the sportsman can visit the Forks of the Morell, the most famous series of trout and salmon pools in that section of the province. The Morell River is one of the most delightful spots for a camping ground to be found anywhere in Canada. Cold springs of the purest water are to be met with every few hundred yards along its closely and beautifully wooded banks. Its winding course, for a distance of twelve miles or more, abounds with exquisite scenery, and its pools are the hiding places of the finest sea and speckled trout. It flows into St. Peter's Bay, which has several other tributaries good for gunning and angling. Trips from the north shore resorts can also easily be made to the



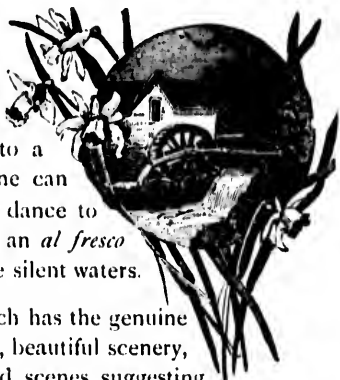


MORELL RIVER-HEAD OF THE TIDE.

curious shore fisheries of a half a dozen harbors and the neighboring villages of the Acadian French; to the oyster beds of Midgell; and to a dozen secluded mills and ponds, where everyone can fish, hunt, pick berries, botanize, laugh, flirt and dance to their hearts' content, and enjoy the keen zest of an *al fresco* repast under the "forest primeval" or beside the silent waters.

Here, at least, one can find a new resort, which has the genuine charm of health, quiet, seclusion from the world, beautiful scenery, a vast variety of rural sports and pleasures, and scenes suggesting constantly the most romantic and striking historical epochs of the last century in both the new and old world. To these may be added daily communication with the outside world, most favorable surroundings for the recovery of health in mind and body, and all the comforts of a first-class table and sleeping accommodation.

In a few years, Prince Edward Island will have many more hotels, and will be thronged with tourists, but the "bloom of the peach" is to be the prize of those who first break into this attractive and suggestive territory, so long overlooked by the great world.



MORELL RIVER-HEAD OF THE TIDE.



CAMP OF THE B.-B. CLUB, MORELL RIVER.



SUMMERSIDE, the second town in Prince Edward Island, in point of population and commercial importance, is pleasantly situated on the north shore of Bedeque Bay, inside of Indian Head. The waters of the Wilnot and Dunk Rivers empty into the harbor, which is one of the finest in the province, and is the *entrepot*, in the summer season, of nearly all the freight and passenger traffic, by rail, from the United States and the western provinces of the Dominion. Summerside is one of the modern towns of the Maritime Provinces, and has always been noted for the vim and activity of its citizens. It is the second shipping port in the province and has a large inward and outward trade. During the season of open navigation the handsome and well-equipped steamers of the Charlottetown Steam Navigation Co. ply daily between this town and Point du Chene in the province of New Brunswick. The distance across the straits is thirty-six miles, which is easily covered by these fine steamers in from two to two and one half hours. In summer time the trip is a delightful diversion to the tourist who has travelled by rail from Boston or Montreal. Financially, Summerside is a good centre for business tourists, as there are three banks where drafts are bought or sold on all parts of the world. It also contains three printing establishments, and two semi-weekly papers are published — newsy, live sheets, up to the requirements of the town. There are eight churches, representing the leading denominations, several lodges of Masons, Odd Fellows, Foresters, besides national, temperance and other societies. Summerside prides itself on its schools, the principal of which is the brick High School on Green Street. The western and eastern district schools are also handsome buildings with spacious grounds, and there is also a fine convent school for girls. The business buildings are all of modern appearance and substantially built. Many of the private residences are very beautiful and are surrounded by handsome lawns and gardens. The neighborhood abounds with and fishing Dunk River, large trout, miles distant, shooting in had anywhere of five miles. ther, the town headquarters who will find commodation good quality. The population of Summerside is about three thousand.



of Summerside good shooting grounds; the famous for its being only six and excellent season can be within a radius Taken altogeth- is a desirable for tourists, the hotel ac- of an average

How to reach it. —



THE TOURIST can have his choice of several different ways of reaching the Island, the most speedy of which, taking Boston as the point of departure, is by way of the Eastern Railway via Portland and Bangor to St. John; thence by the Intercolonial Railway to Point du Chene; across the Straits of Northumberland in the boats of the Charlottetown Steam Navigation Co. to Summerside (see page 27), and thence by rail to Charlottetown, the capital city, or to any other part of the province.

This route passes along the principal coast towns of Massachusetts and New Hampshire to Portland, Maine, and thence across the frontier at Vanceboro, and through some fertile lands and charming scenery along the St. John River to St. John, N. B.

A variation of this trip, and in fine summer weather the most romantic and charming, is to take one of the splendid passenger boats of the International Steamship Co. (see page 28) which leave Commercial Wharf, Boston, arriving at St. John about twenty-five hours later.

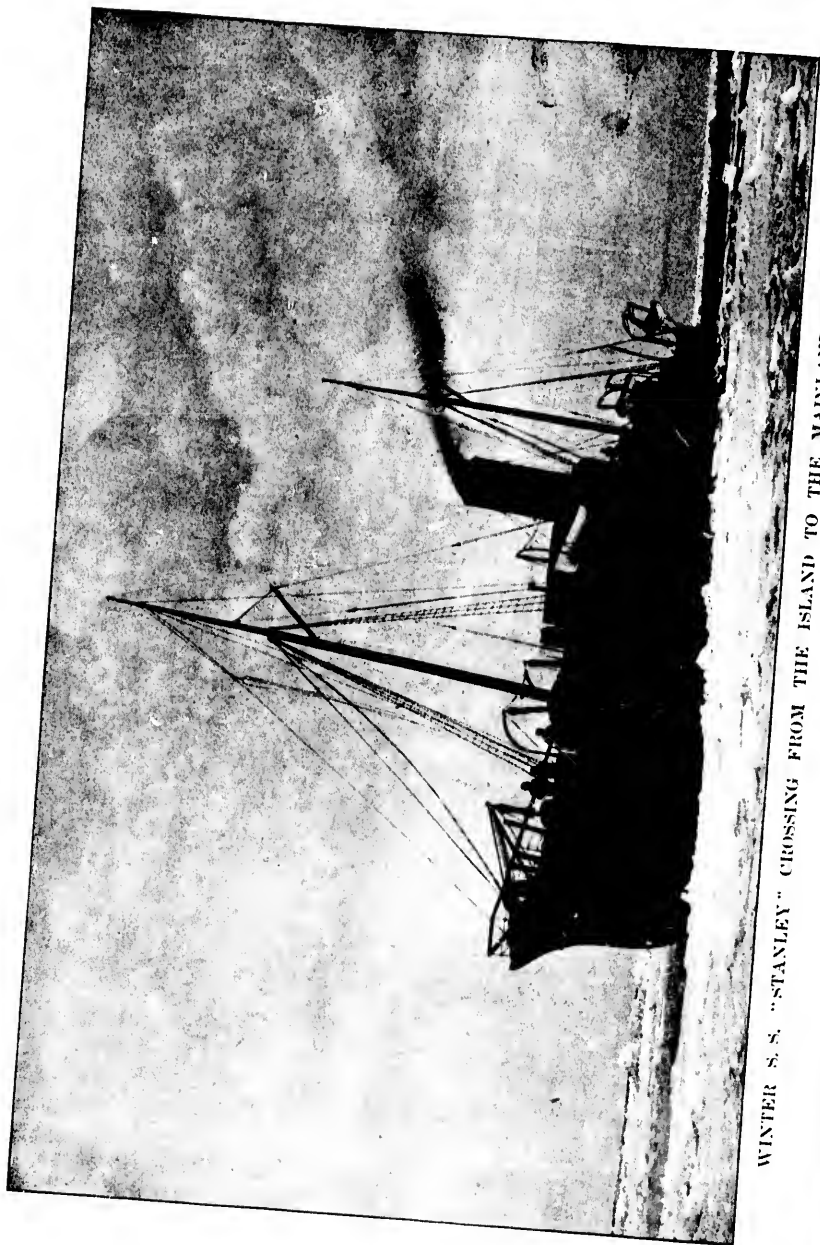
The boats of this line are all staunch and well-equipped, the two larger and later-built, named the "State of Maine" and "Cumberland," being each of 1600 tons burthen, and almost rivalling, in the completeness and elegance of their fittings, the great floating palaces of the Providence and New York Line.

Leaving Boston in the late afternoon, the tourist has close and beautiful views of the inner and outer harbors: Nahant, Thatcher's Island and Cape Ann. A varied and elegantly prepared supper is served about 6 p. m., and after it the tourist can note the many near and distant points of interest and beauty along the coast, as the sunset deepens and the shadows begin to fall far out over the darkening waters; and up and down the coast—singly and in groups,

"through sunset's radiance
The lighthouse gleams like a dying star."

After a pleasant night's sleep in one of the luxurious and airy staterooms the traveller will probably awake to find himself entering the harbor of Portland, where the boat will remain long enough for him to see much of the "City of Elms," and its beautiful haven, unequalled on the North American coast.

The remainder of the trip will be by daylight, closely skirting the



WINTER S. S. "STANLEY" CROSSING FROM THE ISLAND TO THE MAINLAND IN MIDWINTER.



WINTER S. S. "STANLEY" CROSSING FROM THE ISLAND TO THE MAINLAND IN MIDWINTER.

unrivalled coast scenery of Maine. With high water, the boats pass through the "White Head Passage," a narrow pass between the towering cliff of White Head and Peak's Island, a famous summer resort of the good people of Portland.

Past Casco's forest-crowned Island, the long Peninsula of Harpswell, the isolated beacon of Half-way Rock, the light of Sequin off the mouth of the Kennebec, he can see to where Monhegan lies mirrored in the seas, famed in early colonial legends, visited by De Monts, Champlain and Weymouth, and the site of Pemaquid, the ancient fortress home of

"The men of Monhegan, by papists abhorred,"

now almost ruined and deserted.

Quoddy Head marks the entrance to "The Narrows" between Lubec on the right, and Campobello, the first bit of Canadian territory sighted. Through these narrows the tide passes with great fury, and it is only at high water or when the tide favors that Eastport can be reached through American waters. At other times the boat must pass outside of Campobello.

The scenery about Eastport in summer has few equals in the northern hemisphere. It blends, in pleasant weather, granite crags bordered by the deep crystalline waters, in whose azure depths are reflected overhanging trees, green mosses, climbing vines, and beautiful flowers; while on the wonderful land-locked fishing grounds, scores of white-winged boats ply to and from the safest fishery of the North American coast.

Leaving Eastport, the voyage skirts the coast of New Brunswick, scarcely less charming in its constant variety of grim cliffs, lonely beaches, quiet coves, picturesque settlements, and quaint fishing stations, and an hour or two before sunset the boat enters the harbor of St. John.

Thence next morning, by the Intercolonial Railway as before, the traveler passes through the beautiful scenery of southern New Brunswick, and reaches Shediac, or rather Point du Chene, in time for the 2, p. m. boat for Summerside, and thence as before for other points.

Or he may cross from St. John to the beautiful land-locked haven of Annapolis Basin, and passing its narrow portals, gaze up the long emerald slopes crowned by eternal cliffs and wooded crags, and, leaving behind the little town of Digby, steam up the broad, quiet Basin to where Annapolis, the oldest European settlement in America north of the Gulf of Mexico, sits, a quiet, unenterprising provincial town, beside the ruined fortress and moats which tell of many a siege and fray. First settled by the French, it was first taken from them by one of Cromwell's generals, and later has bade defiance by turns to English, Colonial, French and Indian leaguer, or submitted and passed under their control.

Another route, bringing the tourist to this point, is to take one of the elegant steamers of the Yarmouth Steamship Co. (see page 29) from Boston

for Yarmouth, thence over the picturesque line of the Yarmouth and Annapolis Railway (see page 25) to Annapolis.

From thence, the Windsor and Annapolis Railway (see pages 32 and 33) conveys one through the rich fields and orchards of the Annapolis Valley, and thence through Minas, famous for all time as the scene of the Acadian expatriation and Longfellow's *Evangeline*, to Truro, and from thence by the Intercolonial Railway (see pages 26 and 61) to Pictou, whence a line of steamers connect with Charlottetown.

A fifth is the "outside route," via the North Atlantic Steamship Line to Halifax, N. S., a most interesting city, both on account of its splendid harbor, surrounding scenery, and many opportunities for recreation and pleasant excursions, and as being a typical "garrison city," full of present evidences and strange traditions of over a century of constant occupancy by British regiments; and an equally varied record as the naval station where centre the operations of the North Atlantic squadron.

From thence the trip to the Island may be made either by the same line or by the Pickford & Black line of steamers (see page 62), by running along the coast of Nova Scotia to the Strait of Canso, between the mainland of the province and the island of Cape Breton, or as it was known to the French, "L'Isle Royale." The strait abounds in beautiful and striking scenery, and is famous in the annals of the old French war as the scene of many desperate conflicts and several savage massacres. From Canso to Pictou and thence to Charlottetown the voyage is brief, and presents much which is interesting.

This route may also be varied by leaving the boat at Halifax and taking the daily train of the Intercolonial Railway to Pictou, and crossing from that port to Charlottetown, via the boat of the Charlottetown Steam Navigation Co. (see page 27).

Still another variation of the trip may be made at Pictou by taking the steamer "St. Olaf," of the Magdalen Islands service (see page 30), and crossing over to Georgetown or Scuris, thence by the Prince Edward Island Railway (see page 31) to Charlottetown or elsewhere on the Island.

Those who desire to make New York their point of departure, and enjoy a fine sea trip, can do so to advantage by taking the boat of the Mallory Steamship Line (see page 34), which leaves New York every Saturday for St. John, calling on the way at Eastport and Bar Harbor, Maine, thence to the Island by either of the routes before mentioned.

Hotel expenses will nowhere exceed \$3.00 per day, and will average considerably less; teams, boats, guns, fishing tackle, etc., can be purchased or hired at about the ordinary rates charged in a New England town of average population and business importance; and tourists will find that they have never had opportunities to use them more pleasantly than in Prince Edward Island.

THE YARMOUTH AND ANNAPOLIS RAILWAY extends from the Yarmouth S. S. Co's line and the Windsor and Annapolis Ry., "the Land of Evangeline Route."

Yarmouth, the Western terminus, is a pretty, enterprising and wealthy town with a population of 8,000. It has many handsome public buildings and private residences. The lawns and grounds are tastefully arranged and neatly kept, and the trees and hedges, in the hottest months of summer, preserve a freshness and luxuriance nowhere else to be seen. The thermometer rarely goes above 80, and the summer evenings are delightfully cool. Yarmouth County is the sportsman's paradise. Trout and Salmon are plentiful in the lakes and streams; and Moose, Caribou and Bear roam in the forest. Guides and teams at reasonable rates can always be obtained. Hotels good and rates moderate.

Meteghan, an Acadian Village on the shore of St. Mary's Bay, has a population of about 800. It has very good Hotel accommodation at reasonable rates.

Weymouth, a charming little town on the banks of the Sissiboo, has a population of about 1,200. From the River's mouth to the famous Sissiboo Falls—seven miles—the boating cannot be surpassed. Good Hotel and Boarding House accommodation. This is a delightful place to spend a vacation.

Digby, Nova Scotia's renowned Summer Resort, near the entrance of Annapolis Basin, has a population of 2,000, and is well supplied with Hotels and Boarding Houses. The air is invigorating, never uncomfortably warm, and entirely free from fog and chills. Good boating and sea bathing. The lover of the rod and gun can find delightful and profitable sport in the streams and forests of Digby County. Digby is a favorite resort for American pleasure seekers.

Bear River Village is romantically situated in a deep valley on the Bear River, four miles from its mouth. It has a population of about 1,000, with good Hotel and a number of comfortable Boarding Houses. This is a popular resort in the cherry season, from the middle to the end of July. The cherries of Bear River cannot be surpassed anywhere.

Clementsport, a Shipping Port at the mouth of the Moose River. The Village is prettily situated on high land, and commands a view of the entire Annapolis Basin. Population about 800.

Annapolis, the Eastern terminus, bids fair to rival Digby as a Summer Resort. The town is beautifully located at the head of Annapolis Basin, and is sheltered on the North and South by the North and South Mountains. The place was discovered by the expedition of De Monts and Champlain in 1604, and named Port Royal. Its history for the first 100 years is a succession of captures and recaptures by the English and French. It finally fell into the hands of the English in 1716, and its name changed to Annapolis Royal. The old Fort is still in good repair. The town has a population of about 2,000, and has a number of good Commercial and Tourist Hotels.

Not only does the Yarmouth and Annapolis Railway offer rare local attractions to the tourist, but with its connections it makes a direct and pleasant route for through travel between the United States and Eastern Nova Scotia, Cape Breton and Prince Edward Island. The passenger from Boston will board one of the fast Steel Steamers of the Yarmouth S. S. Co's. line at Lewis Wharf. A run of 16 hours will land him at Yarmouth. On the Steamer's wharf he will find a fast express train, with Parlor and Buffet Cars, of the Yarmouth and Annapolis Railway in waiting, which will carry him by the towns and villages already described. Without change of cars at Annapolis, the Windsor and Annapolis Railway train will convey him through the far-famed Valley of Annapolis, within sight of the "Home of Evangeline," and by the old residence of "Sam Slick," to the City of Halifax. From Halifax, a few hours' run by the Intercolonial Railway, and he will make close connection at Pictou with Steamer for Charlottetown; or on the same day he can reach Sydney, C. B.

Note the advantages of this route.

1st—A short sea voyage: Boston to Yarmouth 16 hours.

2nd—A journey by rail throughout the entire length of Nova Scotia, passing through every important town, and nearly every place of interest in the Province. Head Offices at Yarmouth, Nova Scotia.

Yarmouth to Annapolis and is the connecting link between

THE construction of the Intercolonial, and the connection of the Upper and Lower Provinces by a direct line of Railway, has of late years opened up a new route for the tourist as well as the man of business. Each year its advantages are becoming better known, and each season sees an increase in the tide of travel upon it. Leaving Quebec, this road takes its course along the south shore of the lower St. Lawrence. Here the picturesque French villages, the lordly river dotted with sails, and the bold and often beautiful scenery of the shore combine to make the beginning of an ever-varying panorama of which the eye never wearies. Beyond lies the Metapedia valley, the Switzerland of this country, with its mountains of green, and its "musical waters" where the salmon have their home. Entering New Brunswick, skirting the shores of that vast and tranquil natural harbor, the Baie des Chaleur, the traveller is borne rapidly onward, through the famed valley of the Miramichi, thence to Moncton, the headquarters of the Intercolonial.

Starting from St. John the Intercolonial route is through a settled and beautiful country to Moncton. From this place one may either cross the Strait to Prince Edward Island, "the Garden of the Gulf," or continue on to Halifax, the capital of Nova Scotia. The scenery *en route* to the latter places is varied by hill and dale, lake and stream, with towns and villages, in which the evidences of prosperity and plenty meet the eye at every point. At Halifax, with its splendid harbor yachting and boating, ships of war, naval and military attractions, its fortifications, beautiful public gardens, royal park, delightful Bedford Basin, its delicious and stimulating sea air from the Atlantic, its sea-shore and inland drives, its bathing in pure sea water on smooth and sunny beaches, its peaceful and enchanting North-west Arm, one may spend day after day of genuine pleasure, and return to his home, invigorated, refreshed and fitted anew for the routine of daily life. Pictou with its views of land and sea, its ships and its mines; Cape Breton dotted with delightful summer resorts incomparable for their rare beauty and attractiveness, ideal spots in which the pleasure and health-seeker will find needed rest and change.

The glories of Cape Breton and the sunsets on the North-west Arm are scenes that will ever hold a sweet spot in the memory. Historic Louisbourg, or Sydney with its coal mines reaching far into the earth, may all be visited with pleasure and profit.

Within a few hours of Halifax are also such watering places as Chester and Mahone Bay, while in another direction lies the luxuriant Annapolis Valley, the scene of the never-dying story of Evangeline.

Sportsmen will find the rivers, lakes and woods along the Intercolonial unequalled.



J. H. WALKER
WOOD ENGRAVER
AND DESIGNER

181 ST. JAMES STREET

MONTREAL

Guardian Insurance Co.'s
Building -

Prince Edward Island Steamers

—FROM—

POINT DU CHENE to SUMMERSIDE

—AND—

PICTOU to CHARLOTTETOWN

Daily Trips to and from both places (Sundays excepted)
by the Steamers of the

Charlottetown Steam Nav. Co. Ltd.

POINT DU CHENE

The fine Twin-Screw Steamer "**Northumberland**," built especially for this trade—very fast—having large and sumptuous accommodations for Passengers—leaves **POINT DU CHENE**, daily, on arrival of train from **ST. JOHN**, for **SUMMERSIDE**, connecting there with official train for **CHARLOTTETOWN** and other points.

Returning, leave **CHARLOTTETOWN** by morning train for **SUMMERSIDE**, thence to **POINT DU CHENE** and connect there with train for **St. John**, there with trains and steamers for Boston, Montreal, and all other points in United States and Canada.

PICTOU

The Side-Wheel Steamer "**St. Lawrence**" leaves **PICTOU** every day on arrival of morning train from Halifax, for **CHARLOTTETOWN**.

Leaves Charlottetown for Pictou every morning. Connects there with train for Halifax and Cape Breton points, and also by Short Line (Oxford) for places in Nova Scotia and New Brunswick.

AGENTS: **NOONAN & DAVIES**, Pictou; **D. GORDON**, Summerside; **J. C. MACINTOSH**,
Halifax; **CHUBB & CO.**, St. John.

F. W. HALES,
Secretary, Charlottetown.

The disadvantages of the MacKinlay Bill avoided by Tourists visiting P. E. Island.



WHEN visiting Prince Edward Island, tourists find among the leading attractions the low price of imported goods. French, German, and especially English Goods of the better class, are sold at prices that are but a fraction of those asked in American and Canadian cities. Especially is this true of Mantles, Silks, Woolen Stuffs and Fur Goods. Samples sent to any part of America upon application to

Beer Bros.,
CHARLOTTETOWN.

**WHOLESALE
AND RETAIL
IMPORTERS OF
FOREIGN GOODS.**

1893.

International Steamship Company.

DIRECT LINE BETWEEN Boston, Portland, Eastport and St. John

CALAIS, ST. ANDREWS, ST. STEPHEN, CAMPOBELLO,
GRAND MANAN, NEW BRUNSWICK, NOVA SCOTIA,
PRINCE EDWARD ISLAND and CAPE BRETON POINTS.

SPRING TIME TABLE

April 17th to July 3rd.

THREE TRIPS PER WEEK, AS FOLLOWS:

Steamer leaves Boston at 8.30 a.m., Monday, Wednesday and Friday, for Eastport and St. John. Leaves Portland at 5 p.m., Mondays and Fridays only. (The Wednesday trip is to be made direct to Eastport, not calling at Portland).

RETURNING, leave St. John at 7.25 a.m., and Eastport at 12.30 p.m., for Boston, Mondays, Wednesdays and Fridays, and for Portland Mondays and Fridays only. (The Wednesday trip is to be made direct between Eastport and Boston, not calling at Portland).

Trains of the B. & M. R. R. connect with steamers at Portland on Mondays and Fridays going east, and on Tuesdays and Saturdays coming west.

SUMMER TIME TABLE

July 3rd to September 11th.

DAILY SERVICE, EXCEPT SUNDAY.

GOING EAST.

Leave Boston Monday, 5.00 p.m., by steamer direct for Eastport and St. John.

Leave Boston Tuesday, 5 p.m., by steamer direct for Eastport and St. John.

Leave Boston Wednesday, taking Boston & Maine Railroad Express Train at 12.30 p.m., Eastern Division, or 1.00 p.m., Western Division, connect with steamer at Portland for Eastport and St. John.

No steamer from Boston on Wednesday.

Leave Boston Thursday, 5 p.m., by steamer direct for Eastport and St. John.

Leave Boston Friday, 5.00 p.m., by steamer direct for Eastport and St. John.

Leave Boston Saturday, taking Boston & Maine R. R. Express Train at 12.30 p.m., Eastern Division, or 1.00 p.m., Western Division, and connect with steamer at Portland.

No steamer from Boston on Saturday.

GOING WEST.

Leave St. John at 7.25 a.m., and Eastport at 12.30 p.m., Monday, for Boston direct, due at 8.30 a.m.

Leave St. John at 7.25 a.m., and Eastport at 12.30 p.m., Tuesday, for Portland, there connecting with Boston & Maine Railroad, due in Boston at 11.10 a.m. *#* Steamer runs only to Portland on Tuesdays.

Leave St. John at 7.25 a.m., and Eastport at 12.30 p.m., Wednesday, for Boston direct, due at 8.30 a.m.

Leave St. John at 7.25 a.m., and Eastport at 12.30 p.m., Thursday, for Boston direct, due at 8.30 a.m.

Leave St. John 7.25 a.m., and Eastport at 12.30 p.m., Friday, for Portland, there connecting with Boston & Maine Railroad, due in Boston at 11.10 a.m. *#* Steamer runs only to Portland on Fridays.

Leave St. John at 7.25 a.m., and Eastport at 12.30 p.m., Saturday, for Boston direct, due at 8.30 a.m.

Between July 3rd and September 11th, fares by rail to Portland, thence steamer, will be the same as by steamer direct from Boston, and the day trip between Boston and Portland will be omitted between those dates.

SEPT. 11th to NOV. 6th, the same Time Table will be in effect as from
APRIL 17th to JULY 3rd.

J. B. COYLE, Manager,
Portland, Me.

E. A. WALDRON, General Agent,
Commercial Wharf, Boston.

Company.

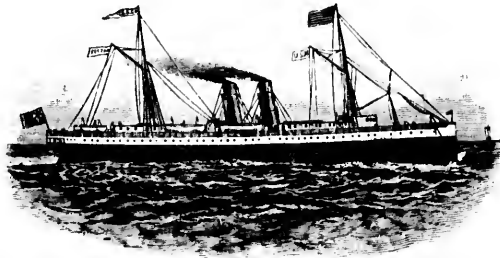
**You can SHOOT
and FISH** To your heart's content
in that Queen of Summer
and Fall Vacation Resorts,
NOVA SCOTIA.

John
POBELLO,
SCOTIA,
ON POINTS.

For Sportsmen who would like an outing in the picturesque LAND OF
EVANGELINE, the best facilities for reaching the favorite hunting and
fishing grounds are afforded by the popular and fast Steamers—

"BOSTON" and "YARMOUTH"

—OF THE—



Yarmouth Steamship Company

which make **Four Trips a Week** during the Vacation Season, leaving
Lewis Wharf, Boston, Monday, Tuesday, Thursday and Friday, at 12, m.;
and returning from Yarmouth, Tuesday, Wednesday, Friday and Saturday
evenings. They make close connections for all points in the Provinces
and Prince Edward Island.

SEA VOYAGE ONLY SEVENTEEN HOURS.

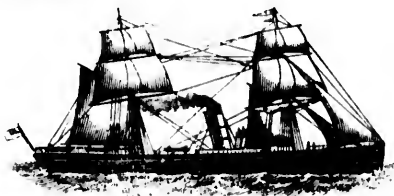
Send ten cents in stamps for our elegantly illustrated 1893 "GUIDE
BOOK TO NOVA SCOTIA." For folders, tickets, staterooms, etc., call on
or address—

J. F. SPINNEY,
Agent, Lewis Wharf, Boston.

W. A. CHASE,
Secy. and Treas., Yarmouth, N. S.

L. E. BAKER,
President and Manager.

PICTOU, N. S.
PRINCE EDWARD ISLAND
MACDALEN ISLANDS
CAPE BRETON



THE
S. S. "St. Olaf,"

P. F. LeMAISTRE, - Master.

Carrying Her Majesty's Mails,—is intended to leave **PICTOU, N. S.** every **MONDAY** (during the season of Navigation), after arrival of morning train from Halifax, for—

MACDALEN ISLANDS,

Calling both going and returning, at **GEORGETOWN** and **SOURIS, P. E. ISLAND.**

CAPE BRETON ROUTE.

Is intended to leave **PICTOU, N. S.** every **WEDNESDAY NIGHT**, after arrival of last trains from **HALIFAX** and **ST. JOHN, N. B.**, for **CHETICAMP, C. B.**, calling off **PORT HOOD, MABOU MOUTH, MARGAREE**, and **PLEASANT BAY, C. B.**, weather permitting.

TOURISTS AND INVALIDS

Will find this a delightful trip, the run being about **SIXTEEN HOURS** **PICTOU** to **MAGDALEN ISLANDS**, and about **TWELVE HOURS** **PICTOU** to **PLEASANT BAY, C. B.**

SPLENDID SHOOTING at **MAGDALEN ISLANDS.** **SALMON** and **TROUT FISHING** abound at the different **CAPE BRETON PORTS** **Margaree River** in particular being far-famed for its **Salmon** and **Trout**.

The **S. S. "ST. OLAF"** is a **first-class** sea-going vessel of **302 TONS** **Gross Measurement.** **EVERY ACCOMMODATION** for **PASSENGERS.**

APPLY TO

F. WYATT FRASER,
Agent, Pictou, N. S.

Or A. FRASER & Co.,
Quebec.

Prince Edward Island Railway

**SUMMER
TOURIST
TRAVEL.**

TOURISTS and VISITORS to the Maritime Provinces should include in their trip **PRINCE EDWARD ISLAND**, the "Garden of the Gulf." All the beautiful seaside and fishing resorts of the Island are reached by this Railway.

ROUND TRIP

TOURIST & SUMMER EXCURSION TICKETS

Issued during the months of June, July, August and September, good to return up to October 30th.

SATURDAY EXCURSION TICKETS will be issued on and after June 3rd, to principal Stations at single first-class fare, good going by any passenger train of Saturday, and for return by passenger trains of Monday.

Mileage Ticket Books, good for 300 miles, can be procured at principal Stations at a low rate.

For Time Tables, Folders, etc., apply to all Ticket Agents.

Charlottetown, P. E. I.

J. UNSWORTH, Superintendent.

TAKE THE **CANADIAN PACIFIC RAILWAY**
Via ST. JOHN, N. B.

THE SHORT LINE

For Montreal, Ottawa, Toronto, Detroit, Chicago, and all points West, North-west and South-west.

ALSO, THE ALL RAIL LINE

For Bangor, Portland, Boston, New York, and points South and West.

For particulars regarding Rates of Fare, etc., apply to nearest Ticket Agent.

D. McNICOLL,

Gen. Pass. Agent, Montreal.

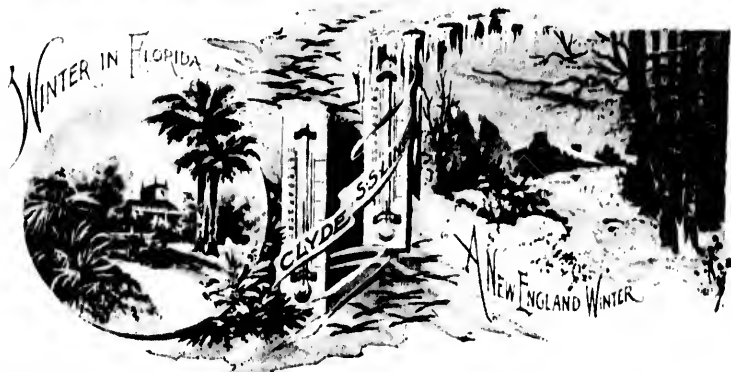
C. E. McPHERSON,

Asst. Gen. Pass. Agt., St. John, N. B.

A TRIP TO FLORIDA BY THE CLYDE LINE is cheaper than staying at home.

BEAR THIS IN MIND NEXT WINTER.

3 TRIPS PER WEEK FROM NEW YORK. DIRECT CONNECTIONS FROM THE EAST.



Modern Built Ships with all appliances for Comfort and Safety.

Cuisine par excellence. Service unequalled. Ask any of its patrons.

MOST INEXPENSIVE WAY TO TRAVEL.

SEND FOR RATES AND SCHEDULES.

THEO. G. EGER, TRAFFIC MAN'R,

5 Bowling Green, New York.

J. A. FLANDERS, EASTERN AGT.

201 Washington Street, Boston.

The Cornwallis Valley Branch

of the

WINDSOR AND ANNAPOLIS RAILWAY

through the

Garden of Nova Scotia

Links Together

Kentville, Canning, Kingsport, and connects with the

Evangeline Navigation Company,

Whose Daily Service between

Kingsport and Parrsboro

carries the traveller under the very

SHADOW OF BLOMIDON.

To and From

All points on the Cumberland, Intercolonial and Nova Scotia Central Railways, to Boston via Yarmouth, and St. John, N. B., via Annapolis, where connections are made with railways running North, East, South, West.

This charming, new and short route cannot be surpassed for Grandeur, Beauty and Variety of Scenery.

K. SUTHERLAND,

Resident Manager.

W. R. CAMPBELL,

General Manager and Secretary.

LYDE LINE
me.

FROM THE EAST.



any of its patrons,
AND SCHEDULES.
EASTERN AGT.
reet, Boston.

with the
company,
ween

er the very
ON.

otia Central
a Annapolis,
South, West.
or Grandeur,

BELL,
and Secretary.

The Land of Evangeline Route.

THE WINDSOR & ANNAPOLIS RAILWAY

(OF NOVA SCOTIA)

is the heart-ideal of the Tourists' Road, the best and most recent improvements—steel rails, air brakes, new rolling stock, and Parlor Car service second to none—making travel a luxury through scenes over which LONGFELLOW lavished the splendors of his imaginative genius. Baggage checked to all points, and no dust thrown in Passengers' eyes, even in this Advertisement.

READ THIS: The Railway runs through the far-famed Annapolis Valley, the garden of the Maritime Provinces, and over ground where the love-tragedy of

EVANGELINE

was woven in Fate's shuttle. The beauties of seascape and landscape can

NEVER

be excelled elsewhere, and the scenes made so real and familiar in the work of the greatest American Poet are here, every one. Through the car windows the enchanted traveller sees the old Willows, the Site of the Church, and Basil's Blacksmith Shop. Evangeline

SAW

her people building the twenty-three miles of dyke, to keep at bay the turbulent tides, and where "distant, secluded, still, the little village of Grand Pré lay in the fruitful valley," while far away to the eastward as far as the eye can reach, stretch vast meadows pictured by

LONGFELLOW

with magic pen. Cross the Gaspeaux River. See the quiet loveliness of the Basin of Minas, and where Blomidon crouches in lonely grandeur, keeping

WATCH

and ward over the point of embarkation, from which the Acadian exiles saw with streaming eyes the last of their old homes. In the distance lie the Five Islands, like precious stones "set in the silver sea." Visit Kentville and go to the Look-off on the north mountain; stop at Wolfville and Acadia College; then to the Gaspeaux Valley; now on to Windsor, where all

TOURISTS

visit the home of immortal "SAM SLICK," known at his own fireside as Judge Haliburton; see King's College, also the immense Gypsum Quarries. Don't forget to keep an eye on the tides that

RUSH

up hill in the beautiful Avon River. Have a glimpse of old Fort Edward; revel in the glorious Mountain Scenery; then on

TO HALIFAX

where a feast of delight is provided for the Tourist in the great Fortifications, the magnificent Harbor, the beautiful Gardens, and the finest Natural Park in the world. Health-seekers won't fail to remember that in travelling

BY THE WINDSOR & ANNAPOLIS RAILWAY

they are in one of the best climates on the foot-stool, where the air is the only medicine required to keep you fresh as paint.

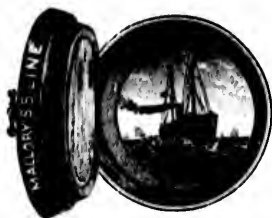
CHEAP FARES.

FIRST CLASS HOTEL ACCOMMODATION IN EVERY TOWN AT REASONABLE RATES.

Splendid Steamships running in connection to and from Boston and St. John, N. B., while Daily Connections are made putting the Passenger in touch with every Railway in Canada and the States.

Buy a volume of Longfellow, or look up the nearest Tourist Agency, or, better still, take a trip to Nova Scotia, if you want to know more about





Mallory Steamship Line.

New York, Maine & Maritime Provinces Service.

DIRECT ROUTE BETWEEN

New York, Bar Harbor, Eastport & St. John, N. B.

Delightful Sea Voyage. Complete Change of Air. Prompt Service. Quick Time.
Elegant Passenger Accommodations. No loss of Business Time.
A Week's Pleasure Excursion. Make the Round Trip.

Steamship "Winthrop,"

1443 TONS,

— **FOR NEW YORK,**

LEAVES ST. JOHN every Tuesday at 3 p. m.; **EASTPORT** Wednesday, about 11 a. m.; and **BAR HARBOR** Wednesday at 7 p. m. Due at New York Friday, a. m.

RETURNING LEAVES PIER 20 or 21, E. R., NEW YORK every Saturday at 5 p. m. for Bar Harbor and Eastport, Me., and St. John, N. B. Due at Bar Harbor Monday morning; at Eastport about noon, and at St. John Monday afternoon.

Connections at St. John by Railroads and Steamboats for all points on the CANADIAN PACIFIC, the INTERCOLONIAL, and the WINDSOR AND ANnapolis RAILWAYS, and the PRINCE EDWARD ISLAND RAILWAY and CHARLOTTETOWN STEAM NAVIGATION Co.

' MALLORY LINES,'

(NEW YORK AND TEXAS STEAMSHIP CO.)

TEXAS, FLORIDA & GEORGIA.

THE Company owns a fleet of Eleven Iron Steamships aggregating 30,772 Tons, plying between New York and Galveston, Texas, (touching at Key West, Fla.) and also between New York and Brunswick, Ga., and Fernandina, Fla., embracing all the latest improvements for comfort and safety, and ranking among the finest in the world. Passenger accommodations, both cabin and steerage, are unsurpassed.

During five or six months of the year, say from September to March, one of the above vessels is despatched from New York to Galveston, Texas, every Tuesday, Thursday and Saturday; for the remaining months the sailings are semi-weekly (Wednesday & Saturday).

Saturday's steamers from New York touch at Key West, Fla., all the year round; all other sailings are **direct**.

The Florida-Georgia service is maintained by weekly sailings (Fridays) the year round, except at such times when business warrants, then the service is semi-weekly (Tuesday and Friday).

"FROM MAINE TO TEXAS."

Close connection is made at New York with our own Line of Steamships for all points in **GEORGIA and FLORIDA, TEXAS, COLORADO,**

CALIFORNIA, MEXICO, and HAVANA, CUBA,

And all points in the South and West, thus affording the tourist and travelling public and the merchant shipping freight, a continuous route to all the famous Pleasure Resorts as well as the numerous marts of trade to be found in our Southern States.

For Rates of Freight, Passage, Printed Matter, and General Information, address—

TROOP & SON, Agents, St. John, New Brunswick.

F. J. STOWE, Agent, Eastport, Maine.

C. C. LADD, Pass. Agent, Bar Harbor, Maine.

SETH SPRAGUE, Gen. Eastern Agent, 306 Washington St., Boston.

H. McMURTRIE, Agent, Cor. 3rd and Chestnut Sts., Philadelphia.

C. G. OSBURN, Agent, 203 East German Street, Baltimore.

C. H. MALLORY & CO., General Agents, Pier 20, E. R., and 362 Broadway, New York.

Line.
nces Service.
EEN
t. John, N. B.

Quick Time,
Time.

rop,"

uesday, about
at New York

Saturday at 5
B. Due at
nd at St John

in the CANADIAN
WAYS, and the
VIGATION Co.

ES,"

GIA.

72 Tons), plying
and also be-
t all the latest
world. Passen-

ne of the above
Thursday and
& Saturday),
our round; all

he year round,
e (Tuesday and

S."

r all points in

UBA,

aveling public
asure Resorts

n, address--

oston.
phia.

ay, New York.



Our
**DRESS
GOODS
DEPARTMENT**

offers a magnificent field
for selection. All departments are kept freshly stocked.
All goods personally selected in the European markets.

We are **Headquarters for KID GLOVES.**
Every pair of Rouillon's and Perrin's Gloves guaranteed.

STANLEY BROS. Brown's Block.

Fennell & Ghandler,

WHOLESALE & RETAIL

HARDWARE,

Victoria Row, Charlottetown, P. E. Island.

WORTH'S

Livery



Stables

Prince Street, Charlottetown, P. E. I.

TELEPHONE COMMUNICATION.

TO VISITING FRIENDS.

If you intend to visit P. E. Island,

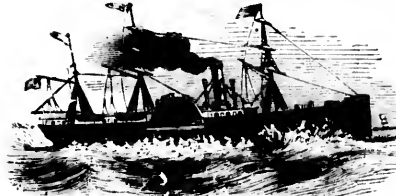
THE GARDEN OF AMERICA,

Just drop into PROWSE BROS.' Store for a **Nice Light Suit and Hat.**
Just the thing for **Outing**, and that won't cost you much money. They
keep the Largest Stock on P. E. Island.

PROWSE BROS.

Stamper's Corner, Charlottetown, P. E. I.

W. W. CLARKE,



Commission



Steamship Agent.

REPRESENTING THE FOLLOWING STEAMSHIP LINES:

FURNESS LINE OF STEAMERS TO LONDON.
DONALDSON LINE OF STEAMERS TO GLASGOW.
CLYDE'S STEAMSHIP LINE TO FLORIDA.

HALIFAX, LIVERPOOL & LONDON S.S. CO. to LIVERPOOL.
HALIFAX AND P. E. ISLAND STEAMSHIP CO.
HALIFAX AND WEST INDIA STEAMSHIP CO.

Also,
Agent
for

North-Western Masonic Aid Association, of Chicago.
CANADIAN EXPRESS CO.
GRAND TRUNK RAILWAY Tickets sold to all points.

Corner Queen and Water Streets, Charlottetown, P. E. Island.

Solid Silver Souvenir Spoons.

Solid Gold and Silver Watches.

Solid Gold Rings.

Solid Gold and Silver Spectacles.

We have fitted some persons with Glasses who had failed
to get fitted in Montreal or Paris. Thousands of pairs
in stock.

E. W. TAYLOR,

Watchmaker, Jeweler and Optician.

Victoria Row, Charlottetown, P. E. I.



DODD & ROGERS,

[Established 1857.]

WHOLESALE & RETAIL DEALERS IN

Shelf and Heavy Hardware,

STOVES, PAINTS, OILS,

Carriage and Saddlery Goods.

FINE CUTLERY A SPECIALTY.

QUEEN ST., CHARLOTTETOWN, P. E. I.

St. George Pharmacy,

MORRIS BUILDING,

VICTORIA ROW.



F. DeC. DAVIES,

CHEMIST & DRUGGIST,

Charlottetown, P. E. I.

HEADQUARTERS

FOR PURE DRUGS, CHEMICALS, PATENT MEDICINES,
TOILET & FANCY ARTICLES, CIGARS, CIGARETTES,
PIPES, TOBACCOS, AND SMOKERS' GOODS GENERALLY.

BEST STOCK OF PERFUMES IN THE CITY.

◁ **Tourists' Headquarters.** ▷

An Elaborate Tuff's Soda Fountain,

From which the most delicious Cool Beverages are dispensed.

MINERAL WATERS OF ALL KINDS.

FINEST STOCK OF FISHING TACKLE IN THE CITY.

Ask for ST. GEORGE PHARMACY, opp. Post Office.

ESTABLISHED 1868

MILLER BROTHERS

Manufacturers' Agents for

Pianos, Organs, & Sewing Machines,

FROM THE BEST MAKERS.

Queen Street,

Charlottetown, P. E. I.



FINE KID

Boots & Shoes,

LATEST STYLES

AT

GOFF BROS.

CHARLOTTETOWN,

Prince Edward Island.

Hickey & Nicholson,

Manufacturers of

SMOKING 

Chewing Tobacco.

NO. 1 QUEEN STREET,

Charlottetown,

-

-

P. E. Island.

It Leads Them All

IN THE
RACE FOR

News AND Popularity

The Daily Examiner



The oldest, the best, and
the most largely circulated
Daily Paper in P. E. Island.

Far and away —
the best medium

FOR ADVERTISERS.

Advertising Rates on Application.

SUBSCRIPTION: \$4.00 PER YEAR, in advance.

The Weekly Examiner



The paper for the country. Full of the
latest news. Reaches a large circle of
intelligent readers.

Subscription: \$1.00 per Year, in advance.

JOB

PRINTING

No house in the trade can beat
us in this line of work.

PRICES LOW.

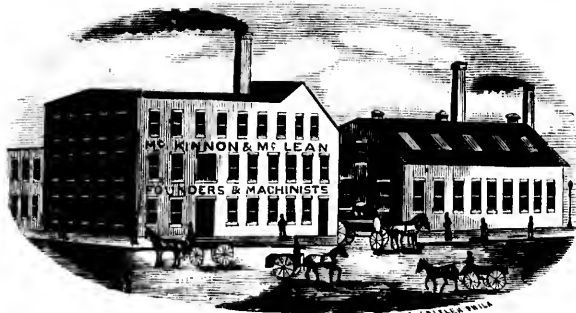
WORK DONE PROMPTLY.
BEST WORKMANSHIP.

Every description of work can
be done at the EXAMINER JOB
PRINTING ROOMS.

Samples and Prices on Application.

THE * EXAMINER * PUBLISHING * CO.

OFFICE: LONDON HOUSE, QUEEN STREET, CHARLOTTETOWN.



McKINNON & McLEAN, Iron Founders and Machinists

Marine and Stationery Engines & Boilers.
Castings of every description, in Iron
and Brass. Manufacturers of Rotary
and Shingle Mills.

Agents for Water Wheels and Grist Mills.
Machinery of all kinds. Hot Water
Engines, &c. Manufacturers of
Potato Starch.

CHARLOTTETOWN, P. E. ISLAND.

Harris Stewart, LONDON HOUSE.

DRY GOODS, MILLINERY, MANTLES, MEN'S FURNISHINGS,
READY-MADE CLOTHING, HATS & CAPS.

We carry a good Stock and are continually replenishing.

LOW PRICES.

HARRIS & STEWART

R. K. JOST,

—Dealer in—

Fine Shoes, &c., &c.

STAMPER'S CORNER,

Charlottetown, - - P. E. Island.

(NEXT DOOR TO PROWSE BROS.)



—IS PUBLISHED—

Every Wednesday,

At the Office, Connolly's Building, Queen Street.

The Herald is the best advertising medium published in P. E. Island.
Call or send for rates. Address:

THE HERALD,

P. O. Box 706, Charlottetown.

art,

Acadia Coal Depot

PEAKE'S No. 2 WHARF.

FURNISHINGS,
APS.

plenishing.

ART

&c.

R,

Island.

D

n Street.

P. E. Island.

Charlottetown.

SYDNEY ROUND (Old Mine)
 SYDNEY ROUND (Reserve Mine)
 SYDNEY NUT (Reserve Mine)
 PICTOU ROUND (Acadia)
 PICTOU NUT (Acadia)



PICTOU ROUND (Intercolonial)
 PICTOU NUT (Intercolonial)
 PICTOU ROUND (Vale)
 PICTOU NUT (Vale)
 ANTHRACITE

A large supply of the above kinds kept constantly in stock, and will be sold low for cash.

C. LYONS.

CHARLOTTETOWN.

Send your

Soiled

Linen

to the

Ch'town

Steam

Laundry

P. E. I.



Particular

Attention

given to

Tourists'

Work

Lowest

Prices

Canada

J. H. MYRICK & CO.,

◎ PACKERS AND DEALERS IN ◎

PORK, LARD, HAMS, &c.

FISH OF ALL KINDS.

ALSO,

Canners of Lobsters, Mackerel, (NEPTUNE BRAND)

FRUIT, ETC.

CHARLOTTETOWN,
 TIGNISH
 ALBERTON.

P. E. ISLAND.

W. W. WELLNER

Is Headquarters for

**ALL LINES OF AMERICAN WATCHES, CLOCKS,
JEWELRY & SILVERWARE, IN THE
NEWEST DESIGNS.**

❁ Spectacles ❁ Eyeglasses. ❁

REPAIRING A SPECIALTY.

CHARLOTTETOWN, - - P. E. ISLAND.

W. G. HARRIS, Jr.,

A. R. C. A.

OFFICE, in
Merchants Bank of
P. E. I. Building.

ARCHITECT.

Charlottetown,
P. E. Island.

WE STRIVE TO PLEASE *~*

—AT THE—



TAILORING *~*

ESTABLISHMENT, ★

BECAUSE we find it to our advantage to do so. If you have interest enough in us to patronize us, we, in return, should do our best for you. It works well. So rest assured if you want anything in our line—coat, pants or vest—

WE WILL TREAT YOU as if you were a Millionaire.

WE WILL TAKE YOUR MONEY and you can have your clothes. And further we can give you for a dollar as much as any other man in this yere town. We are here to stay and stay we will; so come and buy yourself something nobby in the way of a tweed, serge, or a worsted suit, and go on your way rejoicing. You have found what you had been looking for. If you are not posted in the city ask for the Star Tailoring Establishment and anyone will tell you.

JOHN T. MCKENZIE.

Successor to McLeod & McKenzie, Charlottetown.

J. D. McLEOD & Co.,

WHOLESALE
&
RETAIL
GROCERS.

Importers of

Flour, Tea, Coffee,

Sugar, Spices, Pickles,

Sauces, Canned Goods,

&c., &c.. &c.

COR. QUEEN & GRAFTON ST'S,

Charlottetown,

P. E. Island.

**GROCERY &
TEA HOUSE.**

**A Large Stock of
Groceries & Earth-
enware to be
closed out at BIG
REDUCTIONS.**

Wholesale and Retail.
P. MONAGHAN,

 Corner Queen &
Sydney Streets,

CHARLOTTETOWN,

P. E. ISLAND.

THE

WATCHMAN

 Office and Printing Rooms, corner Queen
and Sydney Streets, Charlottetown, P. E. I.

A six page paper published every Thursday

 Circulates largely in every part of the
Province; also, throughout the Dominion
and in the United States.

 An effective advertising medium. Sample
copies sent on application. Correspondence
solicited.

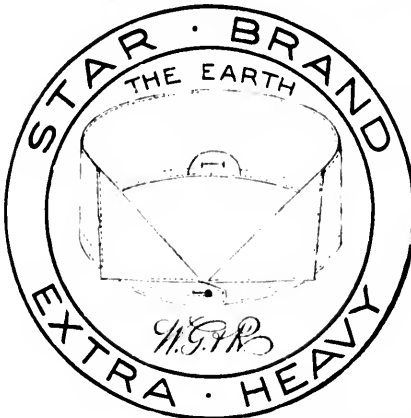
P. McCOURT,
Editor.

P. MONAGHAN,
Proprietor.

OURISTS'

HEADQUARTERS

FOR —



Fine & Tailoring

AND

Gents' Furnishings.

A FULL STOCK OF IMPORTED & DOMESTIC CLOTH.

FASHIONABLE SUITS, made to order, from \$12 to \$35.

A Large Stock of **OUTING SHIRTS**, Suits, Bathing Trunks, English & American Hats, &c.

D. A. BRUCE,

Fashionable Clothier, - Queen Street.

CITY
Gasfitting Store,

Charlottetown, P. E. I.

A. Hermans & Co.
PLUMBERS & GASFITTERS.

Manufacturers of Sheet Iron, Copper,
 and Tinware. Hot Water
 Heating a Specialty.

*Personal attention given to fitting up
 Hot Air Furnaces, Ranges, Baths, &c.*

**SHAVING
 SHAMPOOING**

**HAIR
 CUTTING**

J. J. Gillis,

Tonsorial Parlors

Cor. Queen & Sidney Sts.,

CHARLOTTETOWN, P. E. ISLAND.

Three First-Class Barbers
 Always in attendance.

DR. STRICKLAND,

SURGEON DENTIST.

ARTIFICIAL TEETH inserted on Rubber, Gold, Celluloid, and Combination of Rubber and Gold. All latest improved materials for filling, and pain-saving methods.

VEGETABLE GAS for extracting. Best Teeth and Rubber. All work **FIRST-CLASS**. Written guarantee. Thirty years' practice—seven of it in New York City.

CHARGES MODERATE, to suit the times.

OFFICE: NEWSON'S BLOCK, OPP. POST OFFICE.

TOURISTS AND OTHERS FIND



THE best for Indigestion, Constipation, Biliousness, Headache, &c., because they are purely vegetable, are mild in action, do not not gripe, are perfectly safe for old or young.

Sold by Druggists at 25 cents. Prepared only by--

A. S. JOHNSON, Pharmacist,
Cor. Kent & Prince St's, - - - Charlottetown, P. E. I.

E. H. NORTON & CO.

Charlottetown, P. E. Island

Auctioneers & Commission Merchants

ON HAND { **LOBSTER
PACKERS'
SUPPLIES**

STOVES

BUYERS
OF **LOBSTERS**

Remember this one Name!

WATSON'S DRUG STORE

Headquarters in Charlottetown for

ARTISTS' COLORS, FISHING FLIES, &c. PURE WINES,
CIGARS, AND ALL SMOKERS' GOODS, DRUGS,
MEDICINES, PERFUMES, TOILET ARTICLES.

PRESCRIPTIONS ACCURATELY DISPENSED.

Queen Street, Near Market Square.

TELEPHONE.



LOOK HERE!

Queen Square, Charlottetown.

A SATISFIED CUSTOMER

— IS OUR

BEST ADVERTISEMENT.

Low expenses, small
profits, Shoes that re-
tain their shape and
give good service

Have placed us in the
front rank, and made
our Store popular in
every home.

J. M. McLEOD & CO.

TOURISTS



Visiting the Island will find a full assortment
of **CANNED GOODS**, in Meats, Fruits, Fish &
Vegetables, always on hand at Beer & Goff's.

They also keep in stock a full line of **PIC-NIC
SUPPLIES, BASKETS, CHOCOLATE &
CREAM CONFECTIONERY**, Bon-Bons, Bis-
cuits, **FRUITS** in their season, and everything
to be found in a First-class Grocery Store.

BEER & GOFF.

G. E. ROBERTSON,



**CUSTOM
TAILORING
CENTS'
FURNISHINGS**



**LATEST
ENGLISH
AMERICAN
STYLES**

Morris Block, opposite Post Office,

CHARLOTTETOWN, - - P. E. ISLAND.

HOTEL DAVIES,

 CHARLOTTETOWN, P. E. I.

THE LEADING HOTEL
OF THE PROVINCE.

Buss meets All Trains and Steamboats carrying

Passengers to and from Hotel

free of charge.

J. J. DAVIES, Proprietor.

MOORE & McLEOD,



Direct Importers of
Staple & Fancy

DRY GOODS,

— A full Stock in all
Lines always on hand.

Moore & McLeod,

Successors to PERKINS & STERNS.

79 Queen Street, Charlottetown, P. E. I.



HASZARD & MOORE...



VICTORIA ROW STATIONERS
ARTISTIC PRINTERS AND
BOOKBINDERS

DEALERS IN FINE STATIONERY, FANCY GOODS,
BERLIN PHOTOGRAPHIC GOODS

OUR SPECIALTY

SOCIETY & COMMERCIAL PRINTING OF ALL KINDS

HASZARD & MOORE

BROWN'S BLOCK, VICTORIA ROW, CHARLOTTETOWN, P.E.I.



QUEEN



FIRE INSURANCE
COMPANY.

Office, Next Bank of Nova Scotia.

GREAT GEORGE ST.

DesBrisay AND Stewart, Agents.

CHARLOTTETOWN. P. E. I.

LOW RATES.

PROMPT SETTLEMENTS.



WE WOULD direct the attention of all good people, and especially of

American Tourists



to the advantage of purchasing custom-made clothing when here.

A call at our store will convince you that you can have all the advantages of style, fit and finish to be obtained from the best

.... **Boston and**
.... **New York**
.... **Artists**

and at a cost from one-third to one-half less. We import

— Direct from London —

and have in stock the newest things in demand by the best dressers, for Overcoats, Suits, Trousers and Vests, which on inspection will be found of the class carried by the best American Tailors. We guarantee

≡ The Correct Style ≡

and first class fit and finish.

We solicit trial orders and are satisfied that the

Most Skeptical will be Convinced

of the advantage of replenishing his wardrobe at our establishment

When on Prince Edward Island.

JOHN MACLEOD & CO.

207 Queen Street, Charlottetown.

THE × WEEKLY × PATRIOT.

It is the Largest, the Cheapest, the Newest, and the most widely circulated paper in P. E. Island.

Sent to any address for only \$1.00 a year in advance.

Advertisers have always found the Patriot to be the

Best Advertising Medium in the Province,

And now it is larger and better than ever.

Those who advertise in both the "DAILY PATRIOT" and the "WEEKLY PATRIOT," reach a larger, a more wealthy, and a more intelligent number of readers than can be reached through any other channel.

Those who wish to reach country people particularly, will find that through the columns of the "WEEKLY PATRIOT" they can get entire satisfaction.

Subscription to the "DAILY PATRIOT" \$4.00 per year in advance.

AND All kinds of Job Printing neatly and promptly executed.

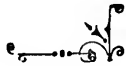
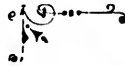
OFFICE:—Cameron Block, Queen Square, Charlottetown.



Geo. Carter & Co.



Wholesale



Retail Seedsmen

GROCERS AND DEALERS IN

Canned Meats, Fruits, &c., suitable for OUTING PARTIES

CHOICE GREEN FRUITS
IN SEASON

FRUIT SYRUPS, NUTS
CONFECTIONERY



136 QUEEN STREET
CHARLOTTETOWN



Of Interest to Visitors.

Mementoes of the Island
in the shape of—

SILVER
SOUVENIR
SPOONS

IN TEA,
COFFEE & ORANGE.

G. H. TAYLOR,

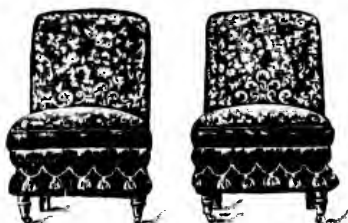
JEWELER, &c.
CHARLOTTETOWN.

FURNITURE

Wholesale
and Retail

Children's
Carriages

REED ROCKERS, &c.



FUNERAL ✂
✂ **DIRECTORS**

UPHOLSTERERS

Mattresses
Pillows, &c.



Mark Wright & Co. (Limited), *Charlottetown*
P. E. I.

NEW : HOTEL, : 1894 :

TOURISTS ! LOOK OUT FOR

PORT * LA * JOIE * HOTEL

Langley Beach, Hillsboro' Harbor Mouth

To be built in time for the Season of 1894

THIS SUMMER RESORT will be situate on a point of land directly across the Harbor from the **City of Charlottetown, the Capital of Prince Edward Island.**

The site commands views of the finest sea, river and landscape scenery in the Maritime Provinces. Can be readily reached either by rail or steambot. Parties stopping at this resort will be able, when they wish a change, to cross over in a few minutes to the City and enjoy its shopping, social or other advantages. The sea and harbor is not teeming with all the kinds of fish known to North and South America, neither will you be allowed to kill every or any kind of game during the *close* season, but parties who are fond of fishing can within a half-mile or less of the house take sea trout of the finest quality and angle for the nimble mackerel on the best of fishing grounds. There are also pond and brook trout fishing in close proximity. Safe boating and bathing within the bay, and, for the more adventurous, good yachting, etc., outside. The most beautiful and interesting walks and drives in the immediate neighborhood.

TOURISTS—Remember this place when making your arrangements for 1894.

Correspond with **ROB ANGUS, Charlottetown, P. E. Island.**

The Weekly
Guardian \$1.00.

The Semi-Weekly
Guardian \$1.25.

The Morning Guardian,

The best and spiciest daily in PRINCE EDWARD ISLAND. Take it to the Seaside with you. **40 CENTS A MONTH.**

ADVERTISERS: In reply to a request for information from Roy V. Somerville, advertising agent of New York. Charlottetown's 4 leading druggists declared—from personal experience—the Guardian the best advertising medium in the Province, for these reasons:—

1. Largest Circulation.
2. The only Morning Paper.
3. Has the most enterprise and news.

VICTORIA ROW, CHARLOTTETOWN.

→* THE DOMINION BOOT & SHOE STORE, *←

West Side Queen Street, Charlottetown,

Carries the Largest Stock, Finest Goods, and
sells at Lowest Prices on P. E. Island.

J. B. MacDonald & Co., Propr's.

ROBT. PALMER & CO.,

Peake's No. 3 Wharf.

MANUFACTURERS OF

Mouldings, Architraves,
Doors, Sashes, Blinds,

Flooring, Clapboards, Stair
Railing, Newel Posts, Balus-
[ters, &c., &c.

CHARLOTTETOWN, P. E. ISLAND.

Bazaar Company,

Dealers in

Books, Stationery & Fancy Goods.

**CHOICEST LITERATURE,
FINEST STATIONERY,
LATEST NOVELTIES,**

Imported direct from England,
Germany, Australia,
and U. S. A.

English and American Tourists supplied with Maps, Charts, etc.

Views of the Island for Sale.

BAZAAR CO.,

Queen Street, Charlottetown.

AULD BROS.

Commission Merchants,

Exporters of 
EGGS  PRODUCE.

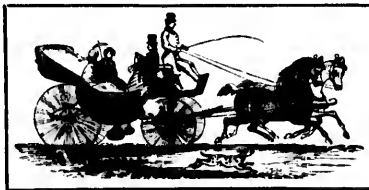
WHOLESALE GROCERS.

GRAFTON STREET, CHARLOTTETOWN, P. E. ISLAND.

Kent Street Livery Stables,

(Sign of the Horse)

Charlottetown,
P. E. Island.



F. W. ROBINS,
Proprietor.

HORSES, COACHES, BUGGIES, BAROUCHES,
AND OPEN WAGONS ON HIRE DAILY.

TELEPHONE.

TERMS REASONABLE.

WALKER'S CORNER.

BUY

**STOVES & HARDWARE
 PAINTS, OILS, VARNISH
 CLOTHES WRINGERS
 BARB WIRE**

**WIRE, OILED & ANNEALED
 WELL PUMPS & PIPES
 PORTLAND CEMENT
 FIRE BRICK**

FROM

Simon W. Grabbe,

Walker's Corner, Charlottetown.

A. M. WRIGHT,

☼ West India ☼

—AND—

General Produce Merchant,

Summerside, P. E. Island.

HEAVY WHITE OATS A SPECIALTY.

CABLE ADDRESS 'REGEN,' SUMMERSIDE.

HENDERSON & McNEILL,

(Successors to JAMES PATON & CO.)



Direct Importers of

ENGLISH 
CANADIAN
DRY GOODS

We have the Largest Stock and
Best Assortment in Prince County



— SUMMERSIDE, P. E. ISLAND —

HOTEL RUSS--

-- CENTRAL STREET --

Summerside, P. E. I.

J. B. RUSS, Proprietor

This Hotel is pleasantly and conveniently situated, is the most central Hotel in the town and is within a short distance of the Post Office.

FREE COACHES MEET ALL TRAINS AND STEAMERS

GOOD TABLE, CAREFUL ATTENDANCE, MODERATE CHARGES

SAMPLE ROOMS, LIVERY STABLE
AND TELEPHONE IN CONNECTION



GOOD FISHING
BOATING & BATHING
NEAR HOTEL

55

Fashionable -
Tailoring - - -
Establishment



*Cloths of
all descriptions
Imported Direct.*

**SUITS MADE TO ORDER IN
THE LATEST NEW YORK STYLES**

GENTS' FURNISHINGS, & c., & c.

DANIEL STEWART,
"THE CLOTHIER," - Summerside, P. E. Island.

Prince County Drug Store
Water Street, Summerside, P. E. I.



Always a large stock of
**PURE DRUGS, CHEMICALS,
AND PATENT MEDICINES.**

IMPORTED & DOMESTIC CIGARS OF FINEST QUALITY.

Trout Rods, Reels and Lines, large and varied assortment of Trout Flies.

Personal attention given to Prescriptions, and twenty-five years of experience warrants that every care is used in dispensing.

J. A. COURLIE.

JOHN GAFFNEY

Water Street, Summerside, P. E. I.

Wholesale Dealer in FLOUR, MEAL, FEED, FISH, APPLES.

COMMISSION MERCHANT & AUCTIONEER.

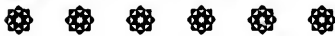
UNITED STATES CONSULAR AGENT.

American Tourists seeking information on Business or other matters, are respectfully invited to call.

American Clothing ★ Store ★★ ★

French Worsteds + + + +
West of England Cheviots
AND Scotch Tweeds + + +
Always in Stock x x x x

FASHIONABLE CLOTHING
MADE TO ORDER -----



READY-MADE CLOTHING
CHEAPEST IN TOWN - -

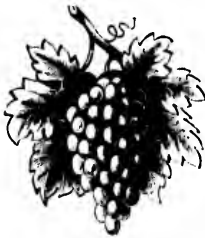


A FULL LINE OF GENTS' FURNISHINGS ALWAYS ON HAND

This Establishment has always been
Headquarters for American Tourists
Looking for Fine Clothing

Awarded Gold
Medals & Diplo-
mas, Philadelphia
Centennial, 1876,
Paris Exposition
1878, Colonial &
Indian Exhib'n,
London, 1886.

JOHN MACKENZIE (WATER ST., SUMMERSIDE
P. E. ISLAND



W. F. CARTER'S *←
Ice * Cream * Parlors.

The Bon-ton place in Charlottetown for
Summer Drinks, Refreshments, Fruits, Confectionery, &c.

OUR SPECIALTY:

STRAWBERRIES
AND CREAM



Fine Wedding and other
Cakes made to order

UPPER QUEEN STREET

J. Maceachern

GENERAL AGENT

Charlottetown, P. E. Island



FIRE
LIFE
ACCIDENT
INSURANCE

W. A. WEEKS & CO.
Dry Goods Merchants



Importers of Silks, Dress Goods,
 Mantles, Millinery, Gloves, Furs,
 Staple and Fancy Goods

≡ Wholesale and Retail ≡

QUEEN STREET, - CHARLOTTETOWN, P. E. I.

A. B. Warburton,

(B. A., B. C. L.)

Barrister, Attorney, Notary, &c.

Commissioner for Massachusetts, U. S. A.

CAMERON BLOCK,

CHARLOTTETOWN, P. E. I.

FOREIGN COLLECTIONS promptly attended to.

- N., B. & M. RATTENBURY -

Wholesale Grocers

PROVISION, FISH
 AND
 GRAIN DEALERS

Charlottetown, P. E. I.

DO YOU APPRECIATE — GOOD PRINTING AND BOOKBINDING ?

If so ==

COME AND SEE US =
FOR PROGRESS IN THESE
ARTS DURING THE PAST
FEW YEARS HAS BEEN



Marked by **Rapid Strides**



AND WE ARE ABREAST OF THE TIMES
AND THE LEADING ESTABLISHMENT OF
THE KIND IN THE PROVINCE.

POINTERS :

WE use BEST PAPER
MODERN TYPE
FINEST INKS
LATEST APPLIANCES
IMPROVED MACHINERY



RESULTS :

..Book Work
..Art Work
..Commercial Work

In the best style of
the art, at reasonable
rates and quickly done.



JOHN COOMBS

LOWER
QUEEN
STREET

Charlottetown, P. E. I.

NEARLY
EVERY
PERSON
WANTS

A

GOOD COW

and
every
person
knows
that
THE

GUERNSEY

IS
THE
BEST

Choice Stock always on hand •
Come and see them •

E. R. BROW

Charlottetown

P. E. I.

JOHN T. MELLISH

Barrister, Attorney, Notary, &c.

Charlottetown, P. E. I. 

OFFICE--
LONDON HOUSE BUILDING

Collecting, Conveyancing and all kinds of Legal Business promptly attended to. Investments made on best security.

W. H. BATT

GEORGE BATT

FRANK BATT

**BATT
BROS.**

: Tug & Steamboat Owners



Tug "WILLIAM AITKEN"

"FRED M. BATT"

"MAY KING"

Steamer "ALBERT"

PLEASURE PARTIES 

Can be accommodated on Tug "MAY KING" on application to the Owners

J. A. Farquharson & Co.

COMMISSION MERCHANTS

WHOLESALE
Dealers
In

**Groceries,
Fruit & Eggs**

QUEEN STREET, CHARLOTTETOWN, P. E. I.

Worth Knowing!

What is it?

That we have the BEST, the CHEAPEST, the LARGEST ASSORTMENT of
Crockery, Glass & China Ware in the City.

DINNER SETS, TEA SETS, CHAMBER SETS, in great varieties. We want everyone to come and get some at the Cheap Crockery Store.

W. P. COLWILL

THE INTERCOLONIAL RAILWAY OF CANADA.

MANY of the World's Fair Summer Resorts are on this popular route for Canadian and United States summer travel.

The Intercolonial traverses for two hundred miles the south shore of the **Majestic St. Lawrence**, thence through the famous lake, mountain and valley region of the **Metapedia and Restigouche Rivers**, unequalled for their

MAGNIFICENT SCENERY

and along the beautiful and picturesque shores of the Baie des Chaleurs and Gulf of St. Lawrence, and the scenic route through Cape Breton. Tourists should be sure to include its famous resorts in their summer tour.

THE PEOPLE'S RAILWAY.

Its equipment is of standard excellence. Trains brilliantly lighted by electricity. Westinghouse Automatic Air Brakes.

Fast Express trains between Montreal, Quebec, St. John, Halifax and Sydney, C. B., making connections for points in Prince Edward Island.

A PERFECT TRAIN SERVICE.

No other route in America presents to tourists, pleasure seekers and invalids so many unrivalled attractions.

Pure air, splendid sea bathing, and a perfect panorama of delightful views.

SPORTSMEN will find the rivers, lakes and woods along the Intercolonial unequalled.

SAFETY, SPEED & COMFORT.

Round Trip Tourist Tickets, Summer Excursion and Sea Bathing Tickets good for passage between the 1st June and last of October, are for sale at all the principal Railway and Steamship agencies in Canada and the United States.

Guide Books to the Intercolonial Railway, Maps, Hotel Lists, books of Summer Tours, also Time Tables, can be had on application to City Agents, or to

D. POTTINGER,

General Manager.

JNO. M. LYONS,

Gen'l Pass. Agent.

MONCTON, N. B.

Pickford & Black's

— LINE —

S. S. "Fastnet"

Sails from HALIFAX every MONDAY, at 6 p. m., for CANSO, ARICHAT, PORT HAWKESBURY, CHARLOTTETOWN and SUMMERSIDE. Returning leaves SUMMERSIDE every THURSDAY, calling at the above Ports, arriving at HALIFAX



To connect with boat for Boston on Saturday.

S. S. "City of Ghent"

Sails from HALIFAX every THURSDAY, at 8 p. m., for SHEET HARBOR, SALMON RIVER, SONORA, SHERBROOKE, ISAAC'S HARBOR and CANSO in NOVA SCOTIA, ARICHAT, PORT HASTINGS and PORT HOOD, in CAPE BRETON, and SOURIS in P. E. ISLAND, returning arrives at HALIFAX,

To connect with boat for Boston on Wednesday.

Manchester, Robertson & Allison

ST. JOHN, N. B.

Importers of

BRITISH
FOREIGN
& AMERICAN

Dry Goods

Millinery, Carpets, Linoleums

Oilcloths, House Furnishings

Cloths and Tailors' Trimmings

JOBBER OF CANADIAN MANUFACTURES

We invite Visitors to inspect our Extensive Establishment

B. O. BOWERS & CO.

Commission Merchants, 98 Hudson St.
NEW YORK


RECEIVERS CANADIAN PRODUCE

CANNED GOODS, FISH, POTATOES, EGGS, &c.

REFERENCES, (Bank of Nova Scotia, Charlottetown, P. E. I.
(Mercantile National Bank, New York

SEASIDE HOTEL } **Rustico Beach**
SUMMER RESORT } **P. E. I.**

Fine Landscape Beautiful Grounds Shady Walks—Boating Surf
 and Still-water Bathing—nice Pier—Bowling Alley Croquet and
 Tennis Lawns, &c. ADDRESS: **JOHN NEWSON, Charlottetown**



Terms—
Moderate

Coach meets
 all Trains at
 Hunter Riv-
 er Station.

JAMES MCLEOD & SON,
Gentlemen's Tailors and Outfitters,

Have leased the shop in the **Cameron Block,**
Victoria Row, Charlottetown, lately occupied
 by Mr. Horace Haszard, and opened a large and
 select stock of the most **Fashionable & Stylish**
Goods, in

Scotch, English & Canadian Tweeds & Worsteds.

The public are guaranteed to receive in the future the same satisfaction
 that the members of the New Firm have always given in the past.

Insurance == FIRE & MARINE

FIRST CLASS BRITISH COMPANIES

**NORTH BRITISH & MERCANTILE }
 UNION ASSURANCE SOCIETY }
 FIRE INSURANCE ASSOCIATION }**

FIRE

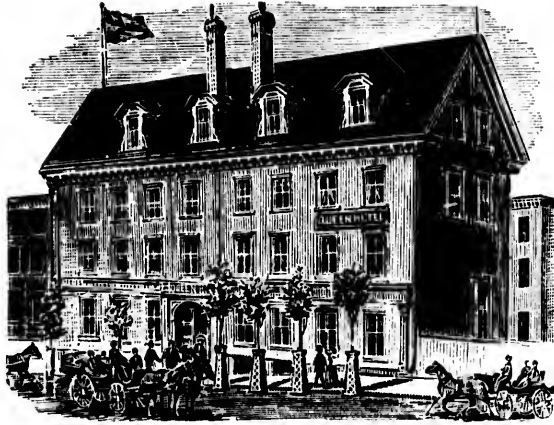
**BRITISH & FOREIGN }
 RELIANCE }
 NOVA SCOTIA }**

MARINE

Office :---
 Stamper Block
 Charlottetown

FRED. W. HYNDMAN
 General Agent

Queen Hotel
CHARLOTTETOWN, P. E. I.



**This House is First-class
 In every respect**

Good Carriages always in waiting at Steamboats and Railways.

P. P. ARCHIBALD, Prop.

Dodd's Medical Hall

DODD'S CORNER, QUEEN SQUARE, CHARLOTTETOWN

ESTABLISHED in 1871, is now in existence 22 years, and so has attained its majority, and with its past record, and promise for the future

SOLICITS, AND INDEED DEMANDS

the support of the citizens and inhabitants of the Island at large, for the treatment they have hitherto received, and invites the patronage of the

TOURIST, STRANGER & TRAVELLING PUBLIC

generally. All Medicines and Chemicals are guaranteed the best obtainable. The Prescription Department always in charge of

QUALIFIED & EXPERIENCED DISPENSERS

none others allowed to prepare any recipes. Also a fine assortment of

RODS, FLIES, & FISHING TACKLE

good and reasonable price. Druggists' Sundries of all kinds; English Brushes—Hair, Tooth Nail, Shaving, etc.; Razors and Toilet Articles generally; Hot Water Bottles; Ice Bags; Syringes; Enemas; Clinical Thermometers; Hypodermic Syringes; Trusses and Supporters. Wines, Brandy and other Liquors, for medicinal use, are the best, and

IMPORTED DIRECT FROM OPORTO

All Patents generally used. Maltine, Pepsine, etc., in all their various compounds, etc. *Strangers enquiring at the Medical Hall for information regarding Medicine, Doctors or Nurses will receive kind attention.*

THE advent of that manifestation of the genius and enterprise of the American people—

The World's Columbian Exhibition,

Offers to all Commercial Traders advantages of Mercantile and scientific insight, which should ensure lasting benefits upon every class of producers, distributors and consumers throughout the world.

With a desire to aid American and other tourists who visit Prince Edward Island and wish to go shopping in Charlottetown, we recommend the well known Dry Goods Firm—

James Paton & Co.

Their buyer visits the European Markets twice every year, and has crossed the Atlantic over seventy times. Their long association with the Dry Goods trade has linked them with the markets of the world and gained for them knowledge and experience which is so much required in these days of keen competition and change of fashion. In this establishment is kept a first-class assortment of Dress Goods, Silks, Gloves, Umbrellas, Furs, Millinery, Mantles. English Waterproof garments in Ladies' and Gentlemen's. English, German, Scotch & Canadian Underwear. Trunks, Valises. Wool and Cashmere Shawls, Carpets, &c., &c. In fact almost everything that is to be had in a first-class store is to be had here; and the prices are at least 20 per cent cheaper than what they can be bought for in the United States. The proprietor or clerks will gladly show visitors through the store, and will be delighted to give any necessary information.



JAMES PATON & CO.,
DRY GOODS,
168 VICTORIA ROW.



Prince Edward Island

The Garden
of the Gulf

ONLY 48 HOURS FROM NEW YORK
“ 36 “ “ BOSTON

• • COMPLIMENTS OF • •



H. L. HALL



HOTEL ACADIA

GRAND TRACADIE, P. E. I.

JOHN COOPERS
Printer
Charlottetown
See Page 58.

