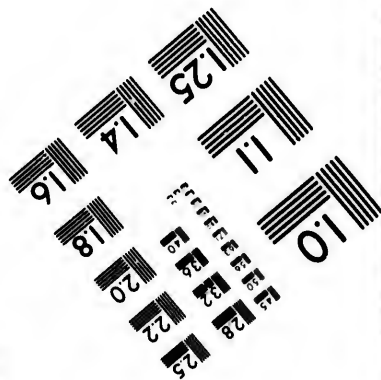
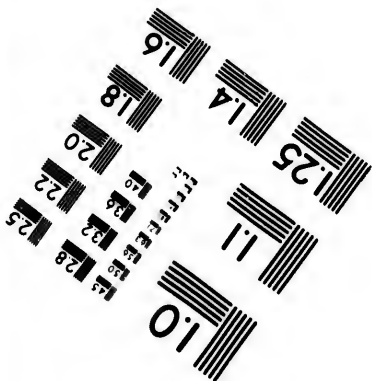
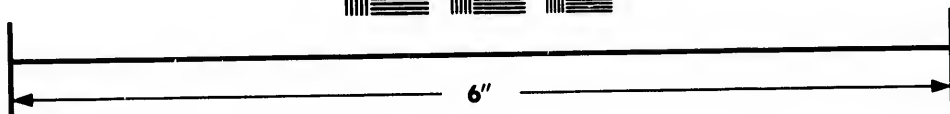
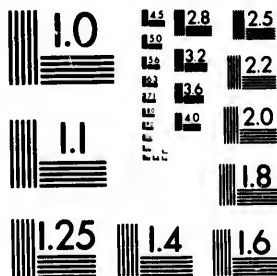


**IMAGE EVALUATION
TEST TARGET (MT-3)**



**Photographic
Sciences
Corporation**

23 WEST MAIN STREET
WEBSTER, N.Y. 14580
(716) 872-4503

13 28 25
32 22
20
9

**CIHM/ICMH
Microfiche
Series.**

**CIHM/ICMH
Collection de
microfiches.**



Canadian Institute for Historical Microreproductions / Institut canadien de microreproductions historiques

10
01

© 1981

Technical and Bibliographic Notes/Notes techniques et bibliographiques

The Institute has attempted to obtain the best original copy available for filming. Features of this copy which may be bibliographically unique, which may alter any of the images in the reproduction, or which may significantly change the usual method of filming, are checked below.

L'Institut a microfilmé le meilleur exemplaire qu'il lui a été possible de se procurer. Les détails de cet exemplaire qui sont peut-être uniques du point de vue bibliographique, qui peuvent modifier une image reproduite, ou qui peuvent exiger une modification dans la méthode normale de filmage sont indiqués ci-dessous.

- Coloured covers/
Couverture de couleur
- Covers damaged/
Couverture endommagée
- Covers restored and/or laminated/
Couverture restaurée et/ou pelliculée
- Cover title missing/
Le titre de couverture manque
- Coloured maps/
Cartes géographiques en couleur
- Coloured ink (i.e. other than blue or black)/
Encre de couleur (i.e. autre que bleue ou noire)
- Coloured plates and/or illustrations/
Planches et/ou illustrations en couleur
- Bound with other material/
Relié avec d'autres documents
- Tight binding may cause shadows or distortion along interior margin/
La reliure serrée peut causer de l'ombre ou de la distorsion le long de la marge intérieure
- Blank leaves added during restoration may appear within the text. Whenever possible, these have been omitted from filming/
Il se peut que certaines pages blanches ajoutées lors d'une restauration apparaissent dans le texte, mais, lorsque cela était possible, ces pages n'ont pas été filmées.
- Additional comments:/
Commentaires supplémentaires:

- Coloured pages/
Pages de couleur
- Pages damaged/
Pages endommagées
- Pages restored and/or laminated/
Pages restaurées et/ou pelliculées
- Pages discoloured, stained or foxed/
Pages décolorées, tachetées ou piquées
- Pages detached/
Pages détachées
- Showthrough/
Transparence
- Quality of print varies/
Qualité inégale de l'impression
- Includes supplementary material/
Comprend du matériel supplémentaire
- Only edition available/
Seule édition disponible
- Pages wholly or partially obscured by errata slips, tissues, etc., have been refilmed to ensure the best possible image/
Les pages totalement ou partiellement obscurcies par un feuillet d'errata, une pelure, etc., ont été filmées à nouveau de façon à obtenir la meilleure image possible.

This item is filmed at the reduction ratio checked below/
Ce document est filmé au taux de réduction indiqué ci-dessous.

10X	14X	18X	22X	26X	30X
<input type="checkbox"/>	<input type="checkbox"/>	<input type="checkbox"/>	<input type="checkbox"/>	<input checked="" type="checkbox"/>	<input type="checkbox"/>
12X	16X	20X	24X	28X	32X

The copy filmed here has been reproduced thanks to the generosity of:

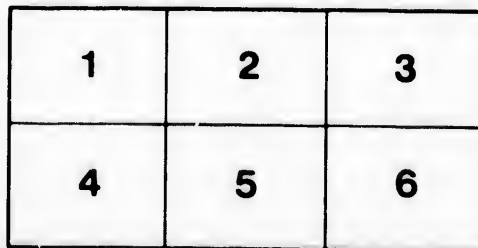
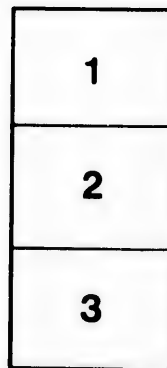
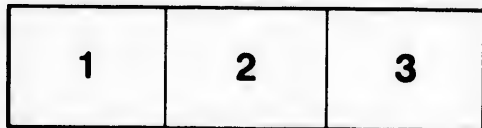
Library Division
Provincial Archives of British Columbia

The images appearing here are the best quality possible considering the condition and legibility of the original copy and in keeping with the filming contract specifications.

Original copies in printed paper covers are filmed beginning with the front cover and ending on the last page with a printed or illustrated impression, or the back cover when appropriate. All other original copies are filmed beginning on the first page with a printed or illustrated impression, and ending on the last page with a printed or illustrated impression.

The last recorded frame on each microfiche shall contain the symbol \rightarrow (meaning "CONTINUED"), or the symbol ∇ (meaning "END"), whichever applies.

Maps, plates, charts, etc., may be filmed at different reduction ratios. Those too large to be entirely included in one exposure are filmed beginning in the upper left hand corner, left to right and top to bottom, as many frames as required. The following diagrams illustrate the method:



L'exemplaire filmé fut reproduit grâce à la générosité de:

Library Division
Provincial Archives of British Columbia

Les images suivantes ont été reproduites avec le plus grand soin, compte tenu de la condition et de la netteté de l'exemplaire filmé, et en conformité avec les conditions du contrat de filmage.

Les exemplaires originaux dont la couverture en papier est imprimée sont filmés en commençant par le premier plat et en terminant soit par la dernière page qui comporte une empreinte d'impression ou d'illustration, soit par le second plat, selon le cas. Tous les autres exemplaires originaux sont filmés en commençant par la première page qui comporte une empreinte d'impression ou d'illustration et en terminant par la dernière page qui comporte une telle empreinte.

Un des symboles suivants apparaîtra sur la dernière image de chaque microfiche, selon le cas: le symbole \rightarrow signifie "A SUIVRE", le symbole ∇ signifie "FIN".

Les cartes, planches, tableaux, etc., peuvent être filmés à des taux de réduction différents. Lorsque le document est trop grand pour être reproduit en un seul cliché, il est filmé à partir de l'angle supérieur gauche, de gauche à droite, et de haut en bas, en prenant le nombre d'images nécessaire. Les diagrammes suivants illustrent la méthode.

ails
du
diffr
une
page

rate

elure,
à

12X

ORDER IN COUNCIL

Relating to the withdrawal of Her Majesty's Ships from British Columbian waters.

By Command.

W. J. ARMSTRONG,

Provincial Secretary.

Provincial Secretary's Office,

18th January, 1883.

Copy of a Report of a Committee of the Executive Council, approved of by His Honour the Lieutenant-Governor on the 5th October, 1882.

The Committee of Council have had under consideration the subject of the probable condition of the Province, in view of the facts that H.M.S. Rocket has sailed for England; that H.M.S. Kingfisher has been ordered South, and that H.M.S. Comus will shortly sail from Esquimalt; and of the report that in future no ship of Her Majesty's Navy will be permanently stationed in British Columbian waters.

The Indian population of the Province, exceeding by at least ten thousand that of any other Province in the Dominion, is largely resident, in scattered groups, along the coast line, and the presence of Her Majesty's ships, stationed at Esquimalt, has for many years past been of the greatest importance in maintaining peace and order amongst the native coast tribes, and in protecting life and property.

The Provincial Government have habitually acted promptly in punishing crime, and it would have been impossible to carry out that policy amongst the Indians on the coast if the assistance of one of Her Majesty's ships had not been readily obtainable. In early days the crews of vessels wrecked on the West Coast of Vancouver Island were not infrequently murdered by the natives, but experience has now taught the latter that deeds of violence will not go unpunished.

The comparative security obtained by the enforcement of law has encouraged the investment of capital in fisheries and other industrial pursuits, which have afforded remunerative employment to and so tended to civilize and improve the native races. The physical power exhibited by a war vessel has an impressive moral effect on the native mind, and it is to be feared that the withdrawal of Her Majesty's ships from these waters would tend to disturb the peaceable attitude now maintained by the Indians. By the Ninth Clause of the Terms of Union it was agreed that the influence of the Dominion Government would be used to secure the continued maintenance of the Naval Station at Esquimalt.

The Committee recommend that the attention of the Dominion Government be called to the above matters, and that they be requested to move the Imperial Government to cause vessels of war to be stationed at Esquimalt. The Committee also recommend that a copy of this Minute be forwarded to the Secretary of State.

Certified.

(Signed)

W. J. ARMSTRONG,

Provincial Secretary,

Clerk Executive Council.

