

ca. 1920?

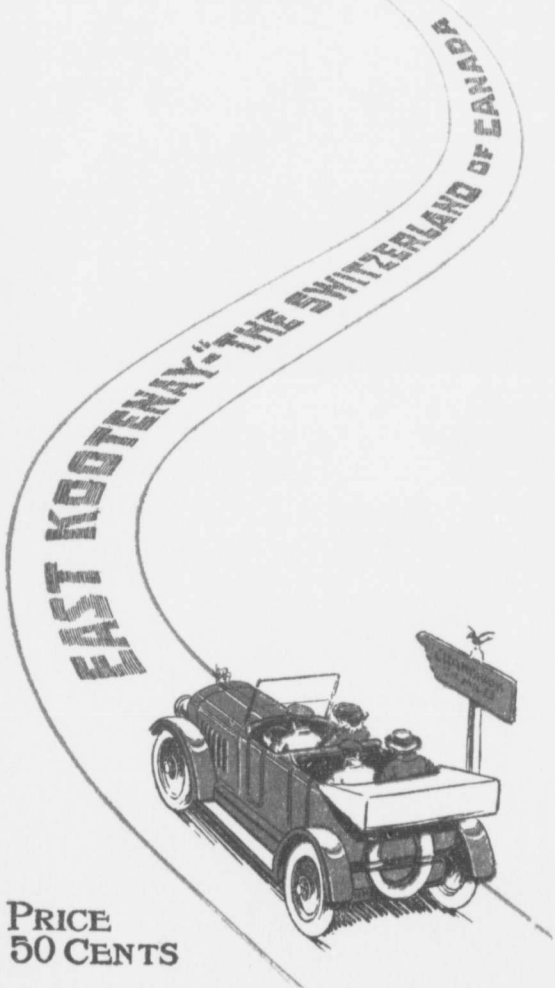
25⁰⁰

SPAM
8148

ROAD GUIDE

CRANBROOK DISTRICT
AUTOMOBILE ASSOCIATION

CRANBROOK
BRITISH COLUMBIA

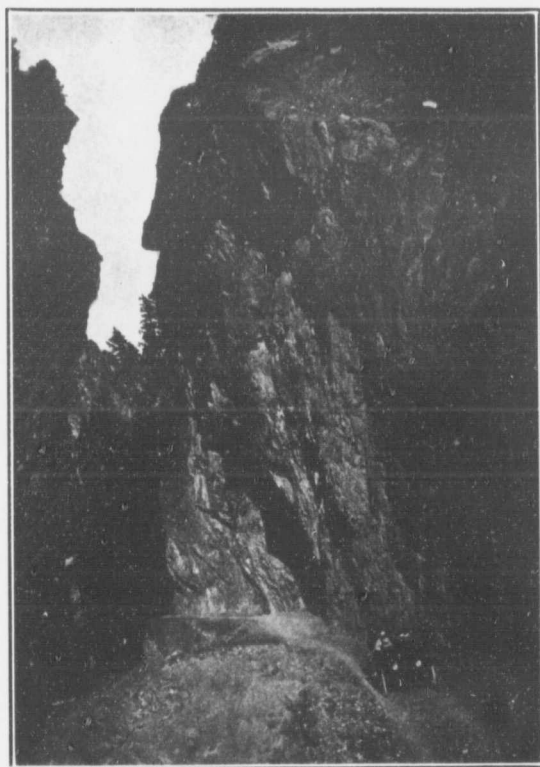


PRICE
50 CENTS

	Miles
Crows Nest, B. C., to Fernie.....	32
Fernie to Cranbrook.....	64
Cranbrook to Kingsgate.....	52
Kingsgate, B. C., to Bonners Ferry, Idaho	31
Bonners Ferry to Sandpoint, Idaho....	36
Sandpoint to Spokane, Wash.....	74
Spokane to Quincy.....	159
Quincy to Vantage Ferry.....	24
Vantage Ferry to Ellensburg.....	33
Ellensburg to Seattle.....	120
Seattle to Bellingham.....	115
Bellingham to Vancouver.....	54

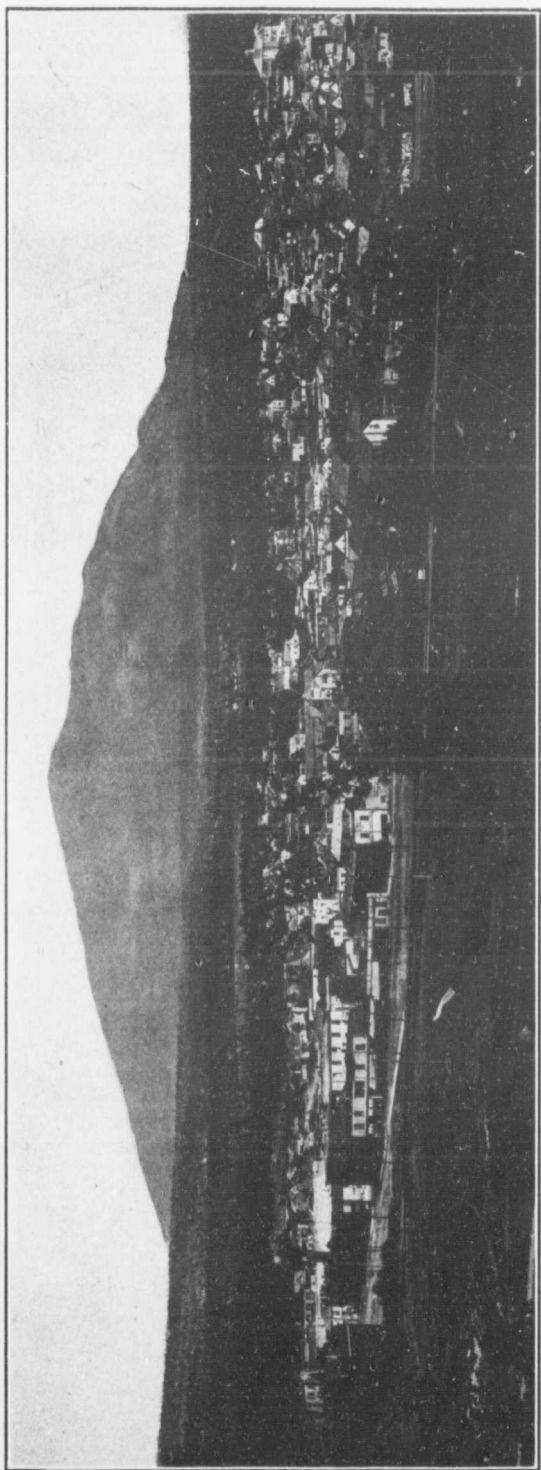
Gerald A. Gill
16-7-60

EAST KOOTENAY
ROAD LOG *and* GUIDE



THE GAP, NEAR SINCLAIR HOT SPRINGS

I S S U E D B Y T H E
C R A N B R O O K D I S T R I C T
A U T O M O B I L E A S S O C I A T I O N



BIRDSEYE VIEW OF CRANBROOK



was
fre
wit

I
roa
me
int
ted
its
we
ner
a f

C
Ca
lin

I
of
its
div
and
int

Sp





TN compiling this guide of the road for the benefit of the Tourist, we have endeavored as far as possible to point out the principal points of interest along the route, to guide the stranger motoring through, and keep him as well informed as one who has frequently passed over and is familiar with the district.

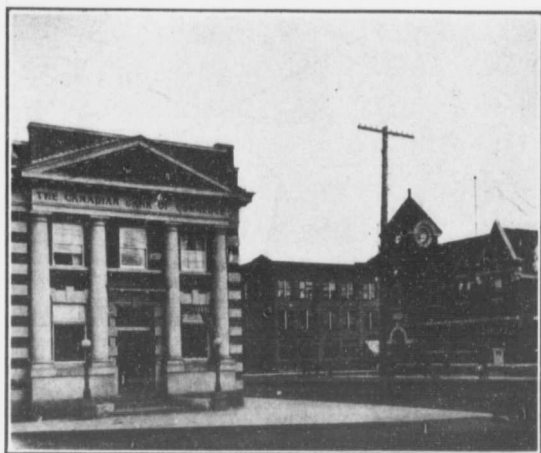
East Kootenay is divided into three road districts. Cranbrook district, commencing at Goatfell and Kingsgate, the international boundary between the United States and Canada, on the west, with its eastern boundary terminating on the west side of the Kootenay river at Wardner, and north from Cranbrook to within a few miles of Canal Flats.

Columbia district extending from Canal Flats north to Golden, on the main line of the Canadian Pacific Railway.

Fernie district begins on the east side of the Kootenay river at Wardner, with its eastern boundary at Crows Nest, the dividing line between British Columbia and Alberta, and south from Elko to the international boundary at Newgate.

The climate of East Kootenay is ideal. Spring opens about the middle of March,





CRANBROOK PUBLIC BUILDINGS

but the snow and frost remain a little longer in the timber land and the higher points of elevation along the route, therefore it is not advisable from a tourist point of view to commence an overland trip much before the middle of April. High water mark is usually reached anywhere from the 15th of May to the 1st of June.

The citizens of Cranbrook have always taken a keen interest in the motoring tourist, and through an appeal from the Auto Association the City has donated FREE parking accommodation, with water and electric light gratis, which we trust the tourist will take full advantage of.

Many interesting and delightful side trips may be taken from Cranbrook.



Wycliffe, 9 miles northwest of Cranbrook, is a lumbering center and the home of the Staples Lumber Co., with a daily capacity of 250,000 feet.

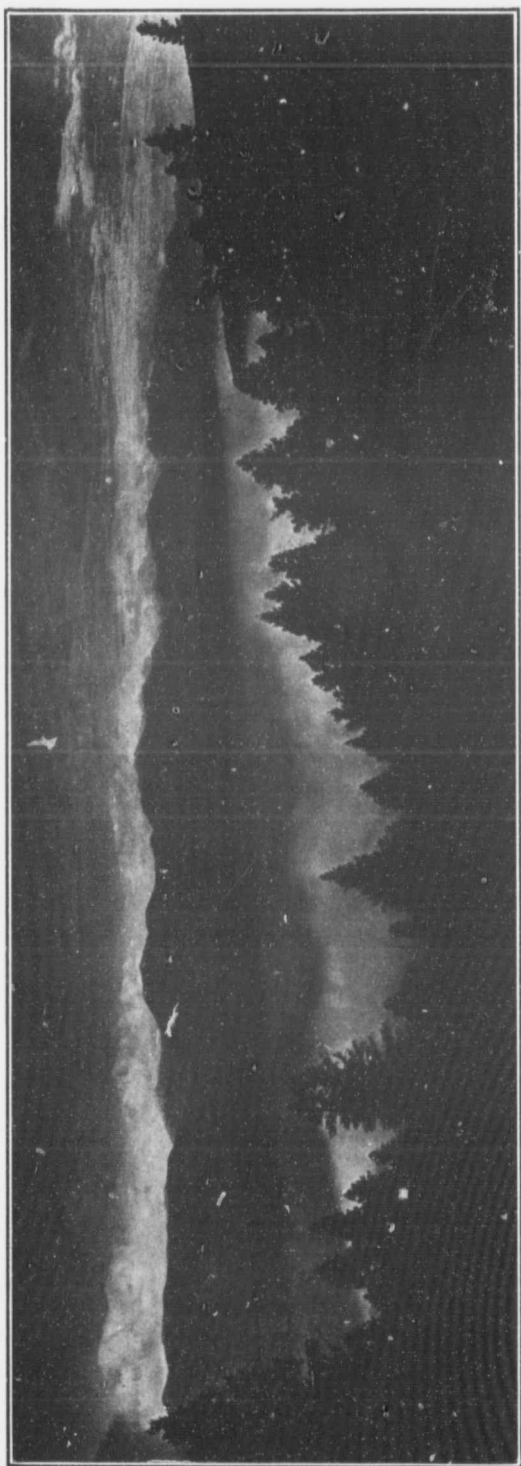
Kimberly, 19 miles northwest of Cranbrook, is a mining town and has one of the largest silver-lead mines in British Columbia.

St. Mary's lake, one of the beauty spots of East Kootenay, 26 miles northwest of Cranbrook, is the fisherman's paradise.



ST. MARY'S FALLS
15 miles northwest of Cranbrook





UPPER COLUMBIA LAKE



Exc
datic
able

M
Cran
distr
lake
and
sum
ther
for
abur

St
the
dian
11 m
histo
the
the

A
Gol
snow
Pre
lock
grou
18 p
skilf
inter
one
the





Excellent boating and sleeping accommodations, with meals supplied at reasonable rates.

Moyie lake, 12 miles southwest of Cranbrook, is another beauty spot of the district. Green Bay, the east end of the lake, provides an ideal camping ground, and many Cranbrook families spend their summer vacation at this point, where there is a beautiful bathing beach, boats for hire and fish are to be found here in abundance.

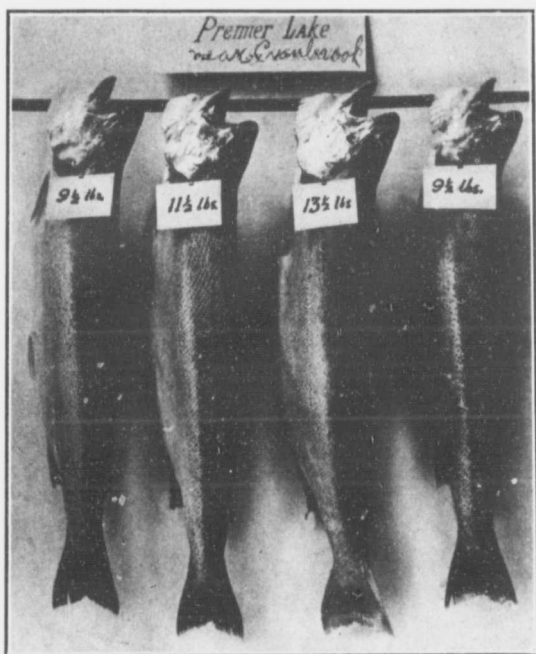
St. Eugene Mission, 5 miles north of the City, with a population of 500 Indians, known as the Kootenay tribe, and 11 miles northeast of Cranbrook the old historic town of Fort Steele, famous in the early '60s for the great gold rush on the Wild Horse Creek.

At mileage 38 on the Cranbrook—Golden route—nestling at the foot of the snow-capped Rockies, is the beautiful Premier Lake, which abounds with land-locked salmon, and is an ideal camping ground. Salmon weighing from 10 to 18 pounds have become easy prey to the skilful angler, and last but by far the most interesting and picturesque side trip, and one which no tourist should fail to see, is the beautiful Columbia Valley trip, ter-





minating at Golden, a distance of 165 miles due north. Midway between Cranbrook and Golden excellent hotel accommodations can be had at Hotel Invermere.



LANDLOCKED SALMON

Thirteen and a half miles north of Windermere the road turns sharply to the right and is the beginning of the already much talked of Banff-Windermere road through the Sinclair pass, which is now completed on the southern end for a distance of 5 miles, and on the Banff section for approximately 20 miles. This

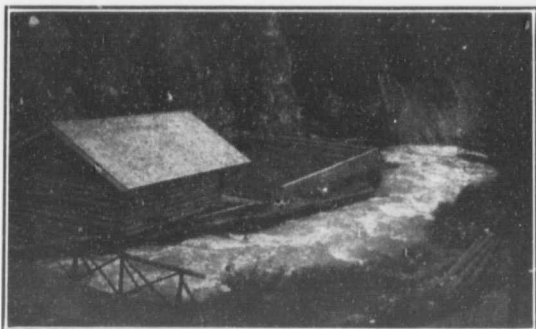


road most up the Gap, trict. brate worlcers.

Ell the beaut of the

Six and n jestic the Ci est coa cated brings bound Albert





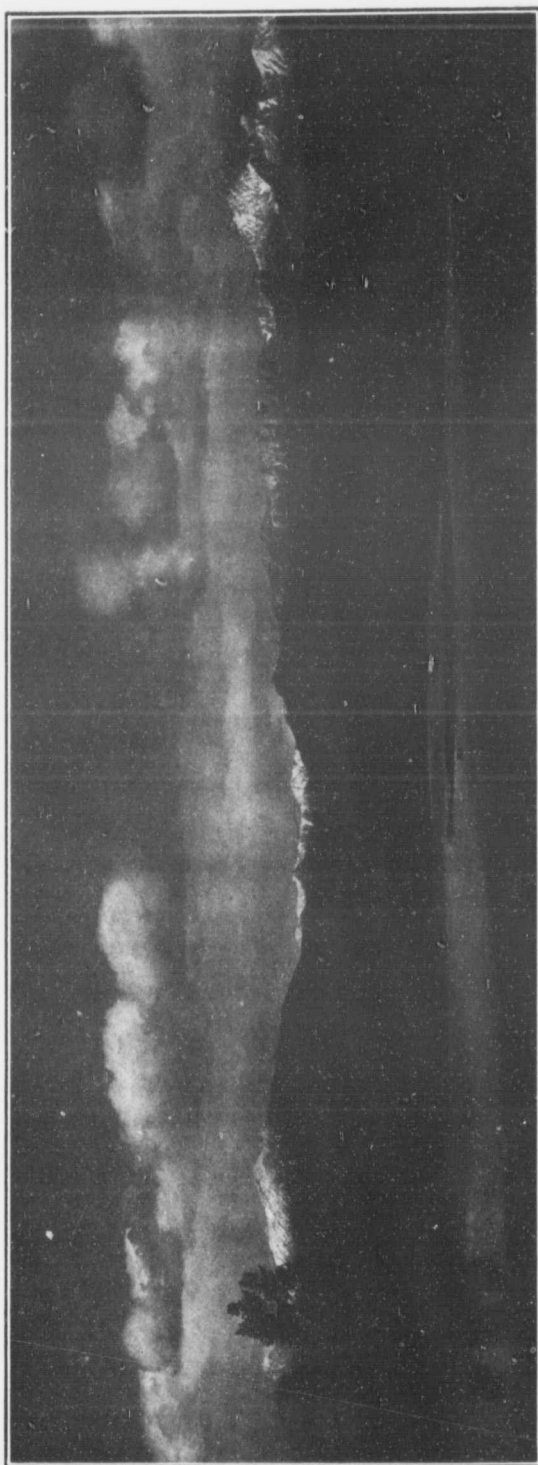
SINCLAIR HOT SPRINGS
13 miles north of Windermere.

road when completed will be one of the most scenic routes in the world. One mile up this road on the southern end is the Gap, and one of the wonders of the district. Another mile brings us to the celebrated Sinclair hot springs, which are world renowned for their healing powers.

Elko, at mileage 43 east of Cranbrook, the tourist should not fail to visit the beautiful Elk River Canyon. This is one of the beauty spots in the Fernie district.

Sixty-four miles east of Cranbrook, and nestling in the valley, with the majestic Rockies towering high above it, the City of Fernie is reached. The greatest coal mines in British Columbia are located here, and 32 miles farther east brings the tourist to Crows Nest, the boundary between British Columbia and Alberta.



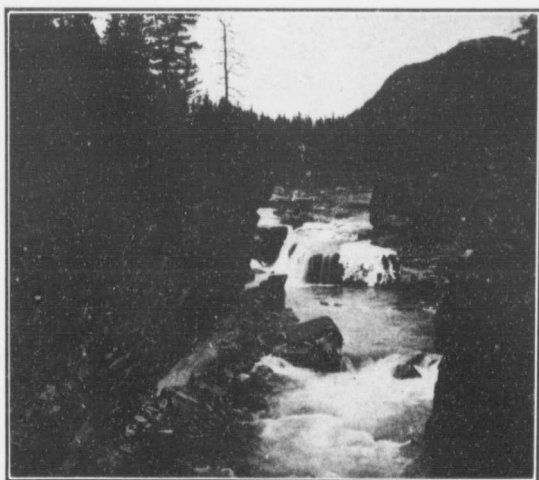


ROCKY MOUNTAINS AS SEEN FROM CRANBROOK

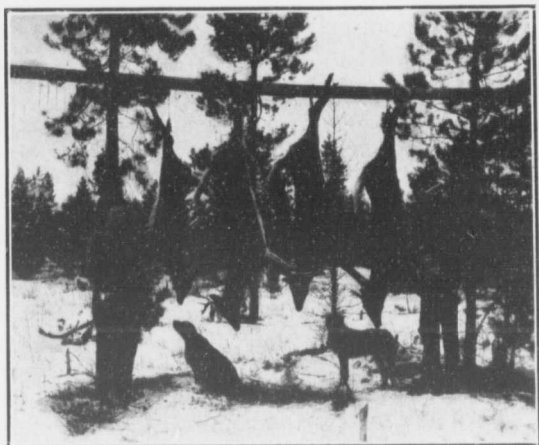
ROAD LOG and GUIDE

The tourist should be provided with a fish and game license, the former for non-residents costing \$1 per day or \$5 per season, the latter \$5 per week, which permits a British subject to carry fire-arms and to hunt game birds during the game season.

Cranbrook has a Rod and Gun Club with a membership of approximately two hundred. The association is bringing into the district Hungarian partridge, pheasants and quail. Wild game of every description abounds in plenty. The sportsman is assured of a bountiful harvest when he visits the Cranbrook district. The disciples of Isaak Walton will likewise find the waters of the Kootenay,



ELK RIVER CANYON, EAST OF CRANBROOK



GAME BAGGED NEAR CRANBROOK

St. Mary's and Moyie well stocked with the elusive trout. In short, the district of Kootenay stands second to none in the matter of genuine, wholesome sport.

Many other places of interest along these routes would be of interest to the tourist, but lack of space will not permit more detailed description.

Before entering Canada American tourists must secure export entry form from United States Officials and permit from Canadian Officials.



For further information in regard to roads and the district, address Secretary Cranbrook District Automobile Association, Cranbrook, B. C.



MAP
OF
EAST KOOTENAY
DISTRICT
BRITISH COLUMBIA
CANADA

SHOWING AUTOMOBILE
AND WAGON ROADS

ISSUED BY
CRANBROOK DISTRICT
AUTOMOBILE ASSOCIATION
CRANBROOK, B.C.

