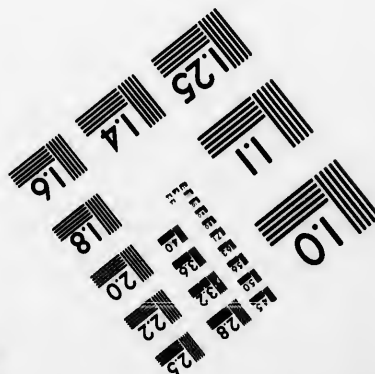
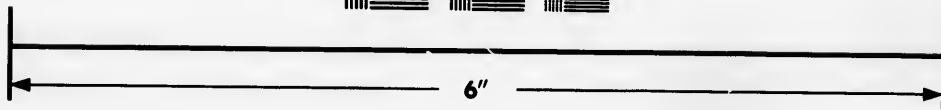
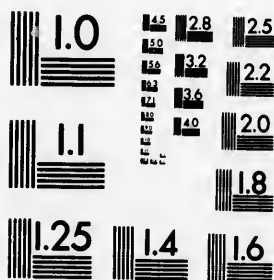


**IMAGE EVALUATION
TEST TARGET (MT-3)**



**Photographic
Sciences
Corporation**

23 WEST MAIN STREET
WEBSTER, N.Y. 14580
(716) 872-4503

**CIHM
Microfiche
Series
(Monographs)**

**ICMH
Collection de
microfiches
(monographies)**



Canadian Institute for Historical Microreproductions / Institut canadien de microreproductions historiques

© 1993

Technical and Bibliographic Notes / Notes techniques et bibliographiques

The Institute has attempted to obtain the best original copy available for filming. Features of this copy which may be bibliographically unique, which may alter any of the images in the reproduction, or which may significantly change the usual method of filming, are checked below.

L'Institut a microfilmé le meilleur exemplaire qu'il lui a été possible de se procurer. Les détails de cet exemplaire qui sont peut-être uniques du point de vue bibliographique, qui peuvent modifier une image reproduite, ou qui peuvent exiger une modification dans la méthode normale de filmage sont indiqués ci-dessous.

Coloured covers/
Couverture de couleur

Covers damaged/
Couverture endommagée

Covers restored and/or laminated/
Couverture restaurée et/ou pelliculée

Cover title missing/
Le titre de couverture manque

Coloured maps/
Cartes géographiques en couleur

Coloured ink (i.e. other than blue or black)/
Encre de couleur (i.e. autre que bleue ou noire)

Coloured plates and/or illustrations/
Planches et/ou illustrations en couleur

Bound with other material/
Relié avec d'autres documents

Tight binding may cause shadows or distortion along interior margin/
La reliure serrée peut causer de l'ombre ou de la distorsion le long de la marge intérieure

Blank leaves added during restoration may appear within the text. Whenever possible, these have been omitted from filming/
Il se peut que certaines pages blanches ajoutées lors d'une restauration apparaissent dans le texte, mais, lorsque cela était possible, ces pages n'ont pas été filmées.

Additional comments:/
Commentaires supplémentaires:

Coloured pages/
Pages de couleur

Pages damaged/
Pages endommagées

Pages restored and/or laminated/
Pages restaurées et/ou pelliculées

Pages discoloured, stained or foxed/
Pages décolorées, tachetées ou piquées

Pages detached/
Pages détachées

Showthrough/
Transparence

Quality of print varies/
Qualité inégale de l'impression

Continuous pagination/
Pagination continue

Includes index(es)/
Comprend un (des) index

Title on header taken from:/
Le titre de l'en-tête provient:

Title page of issue/
Page de titre de la livraison

Caption of issue/
Titre de départ de la livraison

Masthead/
Générique (périodiques) de la livraison

This item is filmed at the reduction ratio checked below/
Ce document est filmé au taux de réduction indiqué ci-dessous.

10X	14X	18X	22X	26X	30X
<input type="checkbox"/>	<input type="checkbox"/>	<input checked="" type="checkbox"/>	<input type="checkbox"/>	<input type="checkbox"/>	<input type="checkbox"/>
12X	16X	20X	24X	28X	32X

The copy filmed here has been reproduced thanks to the generosity of:

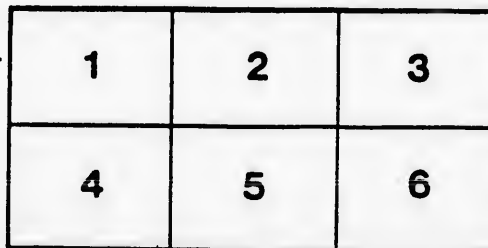
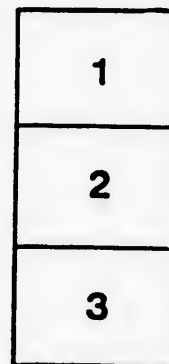
University of Guelph

The images appearing here are the best quality possible considering the condition and legibility of the original copy and in keeping with the filming contract specifications.

Original copies in printed paper covers are filmed beginning with the front cover and ending on the last page with a printed or illustrated impression, or the back cover when appropriate. All other original copies are filmed beginning on the first page with a printed or illustrated impression, and ending on the last page with a printed or illustrated impression.

The last recorded frame on each microfiche shall contain the symbol \rightarrow (meaning "CONTINUED"), or the symbol ∇ (meaning "END"), whichever applies.

Maps, plates, charts, etc., may be filmed at different reduction ratios. Those too large to be entirely included in one exposure are filmed beginning in the upper left hand corner, left to right and top to bottom, as many frames as required. The following diagrams illustrate the method:



L'exemplaire filmé fut reproduit grâce à la générosité de:

University of Guelph

Les images suivantes ont été reproduites avec le plus grand soin, compte tenu de la condition et de la netteté de l'exemplaire filmé, et en conformité avec les conditions du contrat de filmage.

Les exemplaires originaux dont la couverture en papier est imprimée sont filmés en commençant par le premier plat et en terminant soit par la dernière page qui comporte une empreinte d'impression ou d'illustration, soit par le second plat, selon le cas. Tous les autres exemplaires originaux sont filmés en commençant par la première page qui comporte une empreinte d'impression ou d'illustration et en terminant par la dernière page qui comporte une telle empreinte.

Un des symboles suivants apparaîtra sur la dernière image de chaque microfiche, selon le cas: le symbole \rightarrow signifie "A SUIVRE", le symbole ∇ signifie "FIN".

Les cartes, planches, tableaux, etc., peuvent être filmés à des taux de réduction différents. Lorsque le document est trop grand pour être reproduit en un seul cliché, il est filmé à partir de l'angle supérieur gauche, de gauche à droite, et de haut en bas, en prenant le nombre d'images nécessaire. Les diagrammes suivants illustrent la méthode.

1900
**BEE-KEEPERS'
SUPPLIES**



**AND INSTRUCTIONS TO
BEGINNERS IN
BEE-CULTURE.**

R. H. SMITH,

8 OLIVER ST. ST. THOMAS, ONT., CAN.

INDEX.

<p>Alley's Traps, 14</p> <p>Bee Books and Journals, 16</p> <p>Bee Escapes, 14</p> <p>Bee Feeders, 15</p> <p>Bee Veils, 11</p> <p>Brood Frames, 4</p> <p>Cages for Queens, 13</p> <p>Clamps, 3</p> <p>Comb Foundation, 8</p> <p>Escapes, 14</p> <p>Extractors, Honey, 11</p> <p>Extractors, Wax, 15</p> <p>Feeders, 15</p> <p>Foundation, Comb, 8</p> <p>Foundation Fasteners, .. 9</p> <p>Frames, 4</p> <p>Glass Honey-packages, . 19</p> <p>Hives, 2</p> <p>Hive Clamps, 3</p> <p>Honey Cans, 18</p> <p>Honey Extractors, 11</p> <p>Honey Jars, 19</p> <p>Instructions to Beginners, 20</p>	<p>Knives, Uncapping 15</p> <p>Making up Wax, 8</p> <p>Pails, Tin, 18</p> <p>Perforated Zinc, 13</p> <p>Porter Bee Escape, 14</p> <p>Queens, 20</p> <p>Queen Cages, 13</p> <p>Queen and Drone Trap, 14</p> <p>Queen Excluders, 13</p> <p>Sections, 7</p> <p>Section Supers, 5</p> <p>Section Presses, 9</p> <p>Shipping Cases, 17</p> <p>Smokers, 10</p> <p>Supers, Extracting, 3</p> <p>Supers, Section, 5</p> <p>Super Cover, 7</p> <p>Swarm Catcher 12</p> <p>Tin Honey-packages ... 18</p> <p>Tinned Wire, 7</p> <p>Uncapping Knives 15</p> <p>Wire for Frames, 7</p> <p>Wire Imbedder, 7</p>
---	--

.. 1900 ..

To Our Customers and Bee-Keepers Generally:

Owing to the increased demand for Bee-keepers' Supplies, we have deemed it advisable to issue a Catalog and Price List of the various articles we manufacture and deal in. We wish to thank our many customers for the liberal orders with which they have favored us in the past, and assure them that we shall always endeavor to treat each and every customer in a fair and business-like manner, and that in buying from us they will receive only the best goods and at the lowest prices.

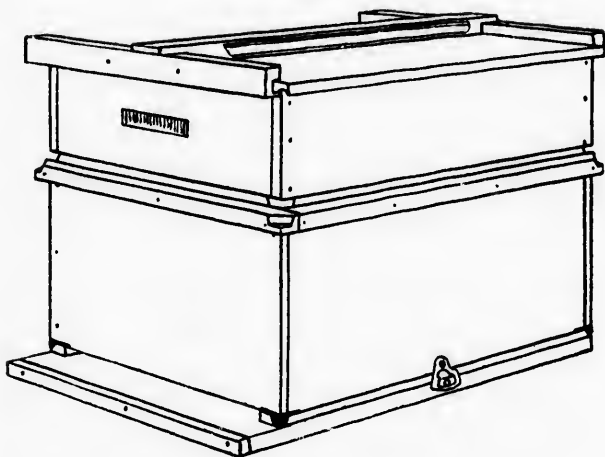
Having been engaged in bee-keeping for the past twenty years (we have at the present time 170 colonies), all the time considering suggested improvements, and having access to the opinions and experience of the best informed bee-keepers throughout the country, we are in a position to know the requirements of the trade. Having also the experience in the manufacture of supplies, we have come to appreciate the necessity of close measurements and accurate workmanship, and have learned how to avoid the mistakes almost inevitable with amateurs.

St. Thomas is far-famed as the "Railway City" of Canada, being on the lines of the Michigan Central, Canadian Pacific, Wabash, Grand Trunk and Lake Erie & Detroit River Railways, and as the Dominion, Canadian and American Express Companies have offices here, we get better rates and more prompt shipments than those not so well located.

If you do not find what you want in this Catalog, write to us and we will give you special prices. We can furnish all kinds of bee-keepers' supplies, whether we make them or not, at lowest prices. We respectfully solicit your custom and wish you a prosperous year and a good honey-flow.

Address, **R. H. SMITH,**
Box 804, St. Thomas, Ontario, Canada.

HIVES.



ALPAUGH HIVE AND SECTION SUPER.

We manufacture the Alpaugh hive, a modification of the Langstroth, equally well adapted for the production of comb or extracted honey, and used almost exclusively in this locality. It is a single walled, nine-frame hive, $17\frac{1}{4}$ in. long, 13 in. wide, $9\frac{1}{8}$ in. deep, inside measure, strongly made with halved corners, which are less likely to rot than the so-called dove-tailed corners. It has strong folded tin rabbets (or frame rests), corner-irons on the bottom corners (a good invention, used on no other hive), hand-hold cleats all around, thick-top-bar frames, end spaced with staples, with foundation starters, removable bottom board, held on by Van Deusen clamps, a cotton quilt and Excelsior cover. (Since the above cut was made the cover has been improved so that a number may be piled up). Nails are also included with hives in flat.

The extracting super is identical with the hive body, except that it contains only eight frames, the reason for this being that the bees can make the combs more plump, which makes extracting easier.

We also supply the eight frame Langstroth hive, at the same prices as the Alpaugh, for those who require it. There are no corner irons nor clamps on the Langstroth hive.

Prices of Alpaugh and Eight-Frame Langstroth Hives.

No. 1 is a one-story hive complete as previously described.

No. 2 is the same with the addition of an extracting super, making a two-story hive for producing extracted honey.

No. 1.

No. 2.

	Nailed and Painted	No. 1.		Nailed and Painted	No. 2.	
		Nailed.	In Flat		Nailed.	In Flat
1 to 5, each,	\$1.40	\$1.30	\$1.15	\$2.25	\$2.10	\$1.85
6 to 10, each,	1.30	1.20	1.00	2.15	1.95	1.65
11 to 25, each,	1.25	1.15	.95	2.00	1.85	1.55

With improved ventilated super cover instead of cotton quilt, 10c. extra per hive.

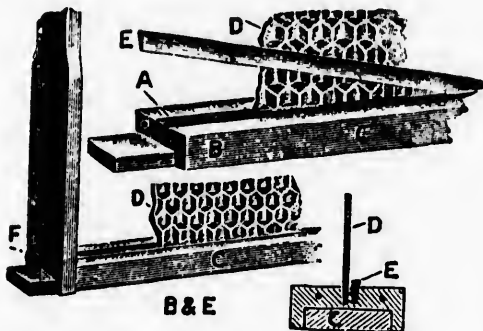
VAN DEUSEN HIVE CLAMPS,

for holding on removable bottom boards.

Price 40c. for 10 pair, including two screws for each clamp.
Without screws, 30c. for 10 pair.

BROOD FRAMES.

Our frames are made with heavy top bars having a double groove as shown below.



The foundation is put into the centre groove, and a wedge-shaped strip pressed into the other crowds the thin partition against it, securing it firmly in place.

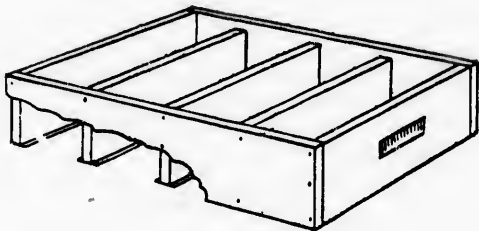
PRICES.

	In Flat.			Nailed Up.		
	10	100	1000	10	100	1000
Alpaugh and Langstroth,	18	\$1.50	\$13.00	25	\$2.00	\$19.00
Hoffman, Lang size,	25	2.00	17.00	30	2.75	27.00

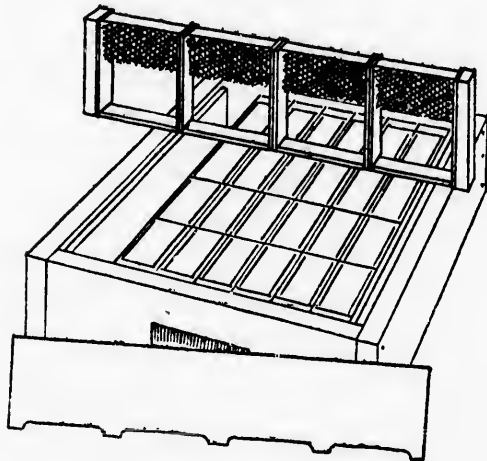
Other styles, send sample, and get our price.

SECTION SUPERS.

To produce comb honey it is necessary to have one or more section supers for each hive. We make three regular styles, illustrated below:—



MOORE SUPER.



SECTION HOLDER SUPER.

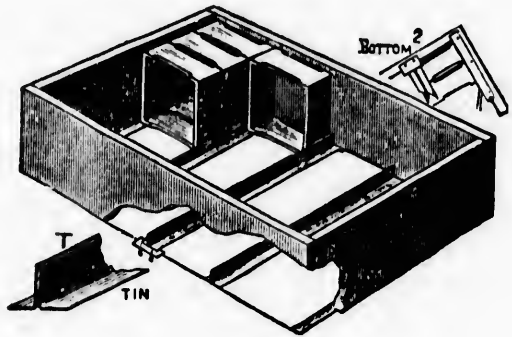
ving a

and a
e thin

1000

19.00

27.00



T TIN SUPER.

The Moore which does not take separators holds 32 sections, $4\frac{1}{4} \times 4\frac{1}{4} \times 1\frac{3}{8}$, and is made only for the Alpaugh hive; the other two have separators, hold 28 sections, and are made in both Alpaugh and Langstroth sizes.

We put foundation starters in the sections, unless otherwise ordered; full sheets of foundation cannot be shipped safely; but for customers living nearby we can put in full sheets at a slight additional cost. The supers are supplied complete, full of sections and foundation starters, ready to put on the hive; also, nailed, without sections; or, in the flat, with nails. Those that are nailed are painted.

Prices of Section Supers.

	Moore.		Section Holder.			T Tin.		
	Complete	Nailed Empty.	Complete	Nailed Empty.	In Flat.	Complete	Nailed Empty.	In Flat.
1 to 5, each, ..	.70	.40	.70	.45	.35	.65	.30	.20
6 to 10, " ..	.65	.37	.65	.40	.30	.60	.27	.18
11 to 25 " ..	.60	.35	.60	.37	.28	.55	.25	.15

SUPER COVER.

A thin board over the frames or sections, under the cover, is a great deal better than a cotton quilt, as it preserves a bee-space over them, preventing propolizing or building burr combs; it will also outlast many quilts. We make a new and improved style, with a trap-door for ventilation and feeding, and a very simple device for ventilating, and making a shade board or ventilated cover unnecessary in the hottest weather, while it is close and warm in cold weather.

Price 13c. each. 10 for \$1.10. When taken with hives or supers, 10c. each.

SECTIONS.

The most popular style of section is the four piece, $4\frac{1}{4}$ x $4\frac{1}{4}$ x $1\frac{1}{2}$ in., but when needed we supply the one-piece. If other sizes or widths are wanted, write us for prices, giving exact measurements. To insure promptness, order early.

Price of four piece sections $4\frac{1}{4}$ x $4\frac{1}{4}$ x $1\frac{1}{2}$:-

100.....	\$.50
250.....	1.00
500.....	1.85
1000.....	3.50
3000.....	9.75

Larger quantities, price on application.

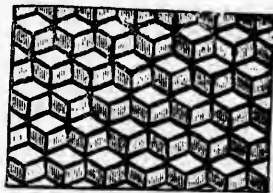
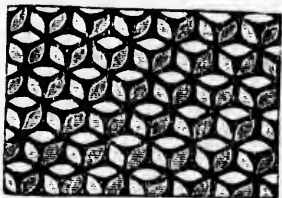
TINNED WIRE FOR FRAMES.

$\frac{1}{2}$ lb. spool 20c. | 1 lb. spool 30c.

SPUR WIRE EMBEDDER.

Price 15c. | By mail 18c.

COMB FOUNDATION.



We sell brood and section foundation made from choice refined beeswax; it needs to be seen and used to be fully appreciated. The brood foundation runs about seven sheets to the pound; of the section a pound will fill from 112 to 120 sections $4\frac{1}{4}$ x $4\frac{1}{4}$ size. The Alpaugh and Langstroth sizes of brood foundation are the same price per lb., other sizes price on application.

Price per Lb. in Lots of

	1 to 10 lbs.	11 to 25 lbs.	26 to 50 lbs.
Brood Foundation..	48c.	46c.	45c.
Section " ..	60c.	57c.	55c.

Making Up Wax.

We make up customers' wax at the following rates, or if preferred will take wax in payment for making, instead of cash. Most wax contains impurities of some sort, and we have to deduct a little from the weight to allow for this. *Adulterated wax will not be accepted at any price.* Alpaugh and Langstroth sizes of brood foundation, same price; other sizes, price on application.

Price per Lb. for making Foundation from Customers' Wax.

	1 to 10 lbs.	11 to 25 lbs.	26 to 50 lbs.	51 to 100 lbs.
Brood F.	10c.	$9\frac{1}{2}$ c.	9c.	$8\frac{1}{2}$ c.
Section "	18c.	$17\frac{1}{2}$ c.	16c.	15c.

SECTION MACHINES.

The **Smith Combined Section Press and Foundation Fastener**, for four-piece sections, fills a long-felt want for a good combined machine. The press is worked by a toggle-joint, requiring very little force to operate it, and is adjustable for any width of section. The foundation fastener is on the hot plate principle, and is worked by a treadle; it has a free plate movement and adjustable foundation guide, and *there is no wax drip*. The method of operating is as follows:— a section top bar is put in the press, the foundation is fastened to it, and while it is cooling, the sides and bottom bar are put in; a light push on a handle presses the four pieces together, and the section is taken out perfectly square, with the foundation hanging true. This machine is easily operated, does the very best work, and does it fast. For $4\frac{1}{4}$ x $4\frac{1}{4}$ sections, complete, with lamp, price, \$3.75.

The **"Double Daisy" Foundation Fastener**, for one or four-piece sections, is a hot-plate machine, designed by us to take the place of the "Daisy," and has the following advantages:—

It is worked by a treadle, allowing the operator to use both hands for the sections and foundation. It has an improved plate movement which entirely does away with wax drip, a most objectionable feature in the old machines.

The foundation guide and movement of plate can be very easily and quickly adjusted, so that any width of $4\frac{1}{4}$ x $4\frac{1}{4}$ sections may be used.

The guide is improved so that the foundation cannot touch the side of the section.

For $4\frac{1}{4}$ x $4\frac{1}{4}$ sections, complete with lamp, \$1.25.

For another size of section, \$1.50.

Kretzmer Section Press, for one-piece sections, $4\frac{1}{4}$ x $4\frac{1}{4}$. Price, 50c.

Parker's Foundation Fastener. Price, for $4\frac{1}{4}$ x $4\frac{1}{4}$ sections, 25c. For another size, 35c.

Full directions are given with all section machines.



choice
e fully
sheets
112 to
s. h
other

60 lbs.

ce.
e.

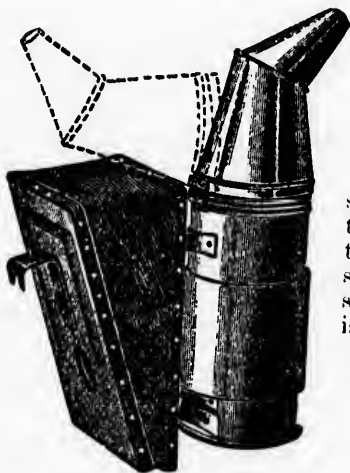
or if
ead of
d we
this.
ough
price;

Wax.

lbs.

SMOKERS.

The Ideal Smoker, originated by us, combines the latest improvements, and is the best that we know of. It has a $3\frac{1}{2}$ inch barrel, 8 inches long, with straight hinged nozzle, light malleable iron legs, draught tube removable for cleaning, first-class bellows, with outside springs, and grooves for finger hold. We are confident that no smoker has better workmanship, or will give better satisfaction, than this. Price, \$1.25.



THE CORNEIL is well described by the cut, and has the same improvements as the Ideal, but has the spring inside. It is light, strong, and gives good satisfaction. Price, \$1.00.

CORNEIL SMOKER.

The Alpaugh Smoker is very similar to the Bingham; it has large barrel with straight nozzle, and gives plenty of smoke. Price, \$1.00. Smaller size, $2\frac{1}{2}$ in. barrel, 85c. Postage on smokers by mail, 25c. each extra.

We are prepared to take any quantity of pure yellow beeswax, in exchange for supplies, at highest market prices.

BEE VEILS,

To protect the face from stings. These are made with rubber cord in the top to fit around the hat. The silk is so fine that it does not interfere at all with the sight. We cannot recommend veils made of common mosquito net, as they are very uncomfortable in warm weather.

PRICES.

- No. 1. Black cotton Brussels net veil,40c.
 No. 2. Same with silk Brussels net face, . . .60c.
 No. 3. All silk Brussels net veil,80c.

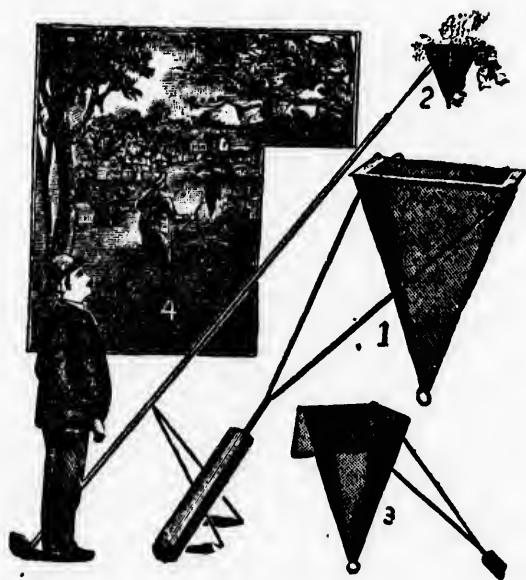
HONEY EXTRACTORS.

We make a very popular style of two-frame extractor that is adjustable to take any size frame, up to 18 in. long, the same way that it hangs in the hive. It is extra well made of heavy tinned iron, and has bevel gear, which is greatly improved by being geared in the ratio of 3 to 1, instead of 2 to 1, as formerly. It has a large Cowan honey-gate, and holds about 150 pounds below the cage, which is strengthened with our new style of bracing, making broken combs next to impossible. With each of these extractors we include our new brace, which holds the extractor steady on its bench, and yet allows it to be released in a second. Price, \$10.00.

We also sell the Gourd Extractors at the following prices:—

	Two Frame.	Four Frame.
Gourd Reversible, Langstroth.	\$13.00	\$15.00
If other frame, add for each inch added to comb basket, .	1.00	1.00
The New Gourd (give frame), .	7.00	8.00
No. 1 (give frame),	5.50	
Ripening and storing can, . . .	4.50	
Two for	8.50	

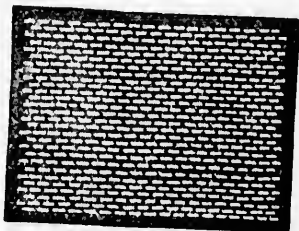
MANUM SWARM CATCHER.



The cut shows the construction and method of using this very popular swarm catcher. To hive a swarm leave the basket open as in fig. 3, push it up around the cluster of bees, jar the latter off the limb, and close the lid by raking it against a lower limb. Half or two-thirds of the bees will be in the basket. Adjust the pole, as in fig. 2, so that the basket will be suspended where the bees are flying, and they, attracted by the bees inside, will cluster on the outside of the basket. When they have settled down carry them gently to the hive, and by inverting the basket, dump them in front of the hive, or into it, and the hiving is done. Price, with pole, \$1.25; without pole, 90c.

For
and
clip
80c.

QUEEN EXCLUDERS.



These prevent the queen going up into the supers, and are very generally used in the production of comb and extracted honey. They are made of perforated zinc, with a wooden rim to hold it tight, and make a bee-space on one side. Prices: Alpaugh and 8 fr. Langstroth sizes, each, 30c.; 10 for \$2.70; 25

for \$6.25. Other sizes price on application.

Perforated Zinc.

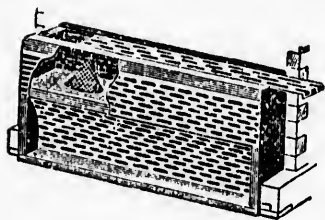


Price per square foot,	\$.12
“ “ 10 sq. feet,	1.10
“ “ 100 “	10.00

QUEEN CAGES,

For use in the apiary; made with wire-cloth on one side and sliding tin cover on the other; just the thing to run a clipped queen into, at swarming time. Price, 10c.; 10 for 80c.; postage, 2c. each.

ALLEY'S QUEEN AND DRONE TRAP.



This catches the queen when a swarm issues, and keeps her confined until the apiarist can attend to her; while the swarm is very likely to return to the hive. It can also be used to catch drones, to be taken to another apiary, or to be destroyed. It is improved up to date, and there are full directions on each trap. Price, size to suit Alpaugh hive, 50c., 10 for \$4.50. 8 fr. Langstroth size, 45c., 10 for \$4.00. By mail, 15c. each extra.

PORTER BEE ESCAPES.



These are used in all well-regulated apiaries. To take off a super, all that is necessary is to slip an escape board between it and the body of the hive in the evening. The next morning the super will be practically free of bees, and can be removed without disturbing the colony. Price, with board, 30c.; 10 for \$2.75, not prepaid. Price of escape, 20c.; 10 for \$1.80, prepaid.

SOLAR WAX EXTRACTORS.

We make, use and sell the Alpaugh style, which we believe to be the best on earth. It is thoroughly well made, has hinged sash with heavy double glass, is sold complete with cover, stand, removable screen and wax pan, and is well painted (black) throughout. We have this year added a device, the invention of Mr. Cruickshank of Lyons, by which the wax is freed from any sediment and left clean. Wax rendered by this method will always command the highest price. Full directions are sent with each extractor. Price, \$6.00.

The Gimmell Wax Press,

For rendering old combs or wax mingled with refuse. Full directions with each. Price, \$3.25.

Uncapping Knives.

Ebony handle, finest steel, price, \$1.00.

BEE FEEDERS.

The Smith Feeder, our own design, is intended for feeding large quantities at a time for winter, and holds 15 to 20 lbs. The passage-way for the bees is in the centre, and the feeder can be covered, making it possible to feed in cold weather. This feeder is especially adapted for use on our new super cover, but can also be used on any hive without it. Price, 50c.; 10 for \$4.50; with super cover, 60c.; 10 for \$5.50.

The Boardman Entrance Feeder

Is very good for giving a few pounds at a time. The feed is given out on the atmospheric principle from an inverted jar with a special cap, escaping no faster than the bees will take it. The cap is inside a box, to prevent robbing, but the jar is outside, so that a mere glance shows how fast the bees are taking the feed. Price, with jar, 25c.; 10 for \$2.00.

The Smith Entrance Feeder

Is for the same purpose as the Boardman, and has the same merits, except that one cannot *see* how fast the bees are feeding. It is simpler, more convenient, and complete in itself, there being no loose parts to get lost or broken. Price, 18c.; 10 for \$1.50.

BEE BOOKS AND JOURNALS.

No bee-keeper should be without at least one good text book and one good bee journal. They will aid him in his pursuit, and make him more familiar with the habits and proper management of bees. We list here some of the most important works published in America.



The ABC of Bee Culture, by A. I. ROOT. 1899 edition. 67th thousand. As the name indicates, this book is written principally for beginners, yet it covers exhaustively every subject necessary for the proper management of bees, so that even the advanced apiarist will find in it much that is new and useful. We sell the latest edition, which contains 475 octavo pages, and nearly as many engravings, including over 50 full-page engravings. It is arranged on the plan of a cyclopaedia, for ready reference, and is well bound in cloth.

Langstroth on the Honey Bee, revised by DAD-ANT. This work has been accepted as a standard in this country and Europe. It treats of everything relating to bees and bee-keeping, contains nearly 600 pages, fully illustrated, and is handsomely bound in cloth.

The Bee-Keeper's Guide, or Manual of the Apiary, by Prof. A. J. COOK. This book is not only instructive and helpful as a guide in bee-keeping, but is interesting and thoroughly practical and scientific. It contains 460 pages, and is fully illustrated.

Advanced Bee Culture, by W. Z. HUTCHINSON.
This is a splendid work, especially for the advanced bee-keeper.

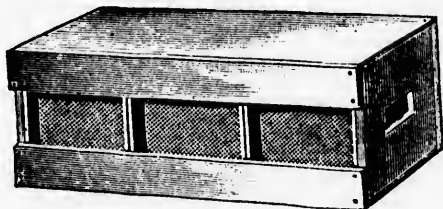
Price List of Bee Books.

		If by mail, Postage.
A B C of Bee Culture,	\$1.25	10c.
Langstroth on the Honey Bee,	1.40	10c.
Bee-Keepers' Guide,	1.25	10c.
Advanced Bee Culture,50	5c.

Bee Journals.

Canadian Bee Journal, monthly, per year's subscription	\$1.00
Gleanings in Bee Culture, semi-monthly, per year,	1.00
Bee-Keepers' Review, monthly,	1.00
American Bee Journal, weekly,	1.00

NO-DRIP SHIPPING CASES FOR COMB HONEY.



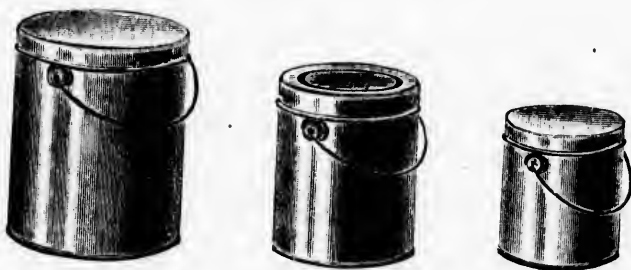
The most popular style of case is one holding 12 sections. It has glass in front, hinged cover, paper tray in bottom to catch any drip, and strips for the sections to rest on. For those who want a larger size, we make 24 section cases of the same style. Both sizes are made for the $4\frac{1}{4} \times 1\frac{1}{8}$ sections; for other sizes and styles write for prices.

Price of cases in flat complete, with glass, nails, paper, strips, etc.:—

	10 to 25	26 to 50	51 to 100
12 Section	12c.	11c.	9c.
24 "	15c.	14c.	13c.

TIN PACKAGES FOR HONEY,

Made from the best brands of charcoal tin. Owing to the heavy advance in tin plate, prices of these goods are somewhat higher than last year. They can be shipped from either St. Thomas or Toronto.



Above we give engravings of a popular style of tin pails for honey, having slip-cover and bail.

PRICES.

SIZE.	1	10	50	100
3 lb	6c.	\$.58	\$2.75	\$5.00
5 "	8c.	.75	3.50	6.25
10 "	11c.	1.00	4.85	9.50

The New Self-Sealing Wire-Edge Pail, with Bail.



This is intended for shipping honey, and is useful when empty as a milk or water pail. Prices, 5 lb. and 10 lb. sizes, same price as slip-cover style on opposite page.

Small Self-Sealing Cans, no Bail.



Prices on application.

60 Lb. Cans,

With 3-in. screw, in neat, light, strong cases.

	1	10	50	100
Prices,	55c.	\$5.25	\$25.00	\$45.00

GLASS PACKAGES FOR HONEY.

Plain Tumblers,.....	$\frac{1}{4}$ pint,	Per Doz.	Per Gross.
"	$\frac{1}{2}$ "	45c.	\$5.00
Plain Honey Jars of fine white glass,		50c.	5.50
with tin screw tops,.....	$\frac{1}{2}$ lb.,	45c.	4.50
"	1 "	55c.	6.00
"	3 "	80c.	8.50

pails, paper,

50 51 to 100	9c.
	13c.

ing to the
are some-
pped from



tin pails

0	100
75	\$5.00
50	6.25
35	9.50



QUEENS.

	April, May, June.	July, Aug, Sept.
Untested Queen, . .	\$1.00	8 .75
Select Untested, . . .	1.25	1.00
Tested Queen,	1.50	1.00

INSTRUCTIONS TO BEGINNERS.

Spring.

We advise a beginner to buy bees in his own locality, if possible. If he has little or no experience, he should not commence with more than two or three strong colonies. The best time is from the 15th to 20th of May; by that time all danger of spring dwindling is over, and they will usually give a return on the capital invested, during the following summer.

* * *

A beginner's outfit should consist of the following:—
A BC of Bee Culture, a good smoker and bee veil, one or two extra hives complete with supers, for each colony, spring count.

* * *

In early spring, when the bees are flying freely, examine each colony to see that it has a laying queen and plenty of stores. Remove all drone comb, except a little in one outside frame, and replace it with worker comb or comb foundation, as much as in your power; every square foot of drone comb thus replaced is equal to a dollar saved. Two drones cost as much to raise as three workers, and after they are raised they keep on eating, while the workers labor for you.

Spring is the season when the bees are most in danger of starvation and dwindling. Watch your colonies, and feed the destitute till the honey crop opens.

* * *

If you have to feed, do not feed with an open dish at the entrance, or out of doors, as it would teach the bees to rob. Use a proper entrance feeder, or put an empty super on the hive with a dish or feeder inside, just before dark, and cover up snug and warm.

* * *

When you see many bees hunting around nooks and corners, you may be sure there is robbing going on somewhere.

* * *

The use of comb foundation not only saves a great deal of labor and time to the bees, but it also saves straight comb, and prevents the over-production of drone comb. The cost of foundation for sections is insignificant, about half a cent for pound sections when full sheets are used.

* * *

Do not spray fruit trees while in full bloom; it will injure the trees, is likely to poison the bees, and is forbidden by law.

* * *

Summer.

The honey harvest lasts but a few days. Or at most a few weeks, so you must be ready for it. Make hay while the sun shines.

* * *

Hives should be sheltered from cold north winds and shaded from the direct force of the summer sun.

* * *

One strong colony will store more in sections in a short flow or a poor season than ten weak ones.

* * *

If you raise honey and extract it from the combs, so as to return the empty combs to the bees to be filled again, you will raise about one-half more after you have a sufficient supply of empty combs to keep your bees at work.

Aug, Sept.

\$.75

1.00

1.00

RS.

locality, if
e should not
ng colonies.
ay; by that
d they will
during the

ollowing:—
veil, one or
ch colony,

freely, ex-
queen and
ept a little
er comb or
ery square
lar saved.
kers, and
the work-

If you give your bees a good supply of empty combs before the beginning of the honey flow, and keep them at work, they will rarely swarm. But if they once find themselves crowded and get the swarming fever, nothing will keep them from swarming.

* * *

The old queen always goes with the first swarm, unless she is unable to fly.

* * *

Make but a limited number of swarms and make them strong and early. Late natural swarms should be returned to the parent hive, about 24 hours after leaving them.

* * *

When bees are hanging out in front of the hive, it shows that they are uncomfortable in it, or have not room. They should be given more air, more shade or more room, according to the circumstances.

* * *

It pays to have an extractor and use it, if you own but four hives of bees.

* * *

One pound of comb honey neatly put up in a clean case is worth as much as two pounds slovenly put up, and is a recommendation to the producer.

* * *

Autumn.

Do not take too much honey from your bees. Remember that it is their surplus you should take, and no more.

* * *

When you open a hive, if you see any robber bees flying about, you may be sure there is no honey in the fields, and you should avoid leaving the hives open, or exposing honey where they can find it. All bees will become robbers, if tempted with exposed sweets in time of scarcity.

* * *

Bees will not work on fruit juice when there is honey in the fields, and they cannot injure sound fruit at any time. If you doubt this statement, put a bunch of sound grapes, or a sound peach, in a hive of bees, and note the result 24 hours afterwards. It is birds and hornets that damage fruit; bees only gather the lost juices.

Honey dew and fruit juice are bad winter food for bees, and should be extracted from the combs.

If bees have to be fed for winter, all the food should be given before the beginning of cold weather.

When you have to feed, if you cannot get good honey, use syrup of granulated sugar mixed with some honey.

Twenty-five pounds of honey are required to winter a colony of bees and help them to breed in early spring.

Winter.

A room or garret where the temperature varies is a bad place to winter bees. To winter bees indoors, they should be kept at a temperature of 40 to 45 degrees, in quietude and darkness.

To winter bees successfully out of doors, it is best to place the hives in cases or clamps, then pack about three inches of dry forest leaves or chaff around the sides, leaving a covered passage for the bees from the entrance. Put about six inches of packing on top, with slats to hold it snug, and a water-proof cover over all.

SUNDRY ADVICE.

Do not watch for bee moths; these pests are practically unknown where Italian bees or their crosses are kept. To get rid of moths in hives of black bees, kill the black queens, and introduce Italian queens in their stead. Moth traps and moth-proof hives deceive the amateur beekeeper, but not the moths.

A bee-veil is very useful at times. Some people do not use veils, but they occasionally get stung about the face, which is unpleasant. Black is the best color for veils; a white or colored net interferes with the vision.

The best time to handle bees is in the warmest part of the day, as most of the old bees are then in the fields.

Smoke the bees at the entrance, a little, before opening a hive.

* * *

Have a good smoker or none; never try to make out with a 50 cent smoker, that makes just enough smoke to make the bees mad, and is sure to go out just when they are ready to back into you.

* * *

Planer shavings are recommended for smoker fuel; sap hickory, apple, maple or poplar, dry and rotten enough to crush in the hands is easily lighted, makes plenty of smoke without very much heat, and does not die out until entirely consumed.

* * *

When stung, do not lose a second, but **SCRAPE** the sting off. Do not **PINCH** it off, as you are more than likely to drive more poison into the wound. A sting instantly removed gives but little pain comparatively.

* * *

There are about 5,000 bees in a pound. A gallon of honey weighs 11 to 12 lbs., according to its density.

* * *

In conclusion, we would quote from the report of Mr. R. F. Holtermann, late apiarist of the Ontario Agricultural College:—

“Permit me to impress upon bee-keepers the fact that we have found that large honey yields can only be secured by careful attention to the business. The points in management which require especial care are good wintering, providing plenty of stores during spring and keeping the bees together during the season; increase of colonies should be avoided rather than encouraged.

“Too many bee-keepers are content with smaller yields than can be obtained.”

before opening

READ CAREFULLY.

DIRECTIONS FOR ORDERING.

Give your name and address in full, also Freight and Express Office.

Tell how you want goods sent, whether by Mail, Express or Freight, if you know. If not, then leave it to our judgement.

Use the names found in this catalog for the articles you order; this will prevent confusion. In ordering odd sized goods, it is best to send a sample, or give full description and accurate measurements.

Our terms are strictly cash with order. We pay cash for materials and work; therefore we must have cash in advance for goods furnished.

Remittances. Money may be sent by P. O. Money Order, Express Money Order, Postal Note or Registered Letter. Do not send coin in letters, unless at your own risk.

Customers over 200 miles from St. Thomas are entitled to an allowance on freight rates.

Goods C. O. D. We advise no one to order goods sent C. O. D., on account of the extra charges for collection. Orders for goods to be sent C. O. D. must be accompanied by a remittance amounting to one third of their value.

Order Early. We wish to urge you to order as early as possible. We have to fill orders in rotation, and, if you wait until the busy season, we cannot guarantee prompt shipments. "*Order early and avoid the rush.*"

All prices in this catalog are subject to change without notice.



The End of This Cat-alog!

