



Pamph
1913
no. 95

Peninsular Park

Big Bay
Point
Lake Simcoe
Ontario

Peninsular Park

Big Bay
Point
Lake Simcoe
Ontario



Peninsular
1913
no 35

Peninsular Park—Lake Simcoe



PENINSULAR PARK—Big Bay Point.



A SHADY NOOK—The kiddies.

Its Location

PENINSULAR PARK has long been known as the most picturesque and charming spot on the whole of that beautiful sheet of inland water known as Lake Simcoe.

As will be seen from a map of Lake Simcoe shown elsewhere in this booklet, the lake is in a form of a diamond, with the towns of Orillia, Bradford, Beaverton and Barrie at the



GOLF COURSE—PENINSULAR PARK.

owing to the increased travel facilities, that the district has come into prominence, and in a short time it is certain that Summer cottages will be dotted around the whole shore.

Elevation.

From the point of elevation, Lake Simcoe is about 500 feet above the level of Lake Ontario and over 700 feet above the sea level. In consequence the air is found bracing and clear and with the wide sweep of water all round, is delightfully cool in summer time.

How to Get There.

Hitherto owing to its inaccessibility, Peninsular Park, though long known as the most beautiful spot on the lake, has not been patronized as its beauty warranted. A number of enterprising Toronto gentlemen realizing the needs of the place, however purchased the Park property and a large tract of land adjoining, and in



CAMPERS—PENINSULAR PARK.

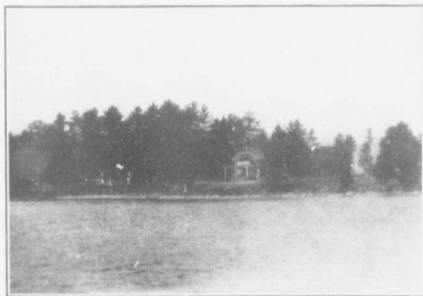
different points of the compass and stretches about 30 miles from North to South and the same distance from East to West.

Popularity as a Summer Resort.

For many years numbers of leading citizens from Toronto, Hamilton and other Canadian points have spent their summers on this beautiful lake; but it is only within the last few years,



OVERLOOKING KEMPENFELDT BAY.



COTTAGE ON THE WATER FRONT

close association with this enterprise have organized and brought into being "The Lake Simcoe Navigation Co.," which company has purchased the palace steamer "Otonabee" and put it into service on the lake giving connection between Peninsular Park and Barrie (where it meets all regular Grand Trunk trains) and in addition furnishing connection with Jackson's Point, Roche's Point, Belle Ewart and other places to which points a regular service is maintained with Toronto, by both electric and Grand Trunk railway lines.



SS. OTONABEE—Approaching Peninsular Park.

The steamer "Otonabee" is a staunchly built craft, having a licensed carrying capacity of 450 people and is fitted with twin screws, is electric lighted and is thoroughly equipped with everything requisite to make an up-to-date passenger service boat. The mind cannot picture anything more exquisitely beautiful than to take the evening trip from Barrie to Peninsular Park, listening to the strains of the orchestra on board, the steamer's searchlight playing on the shore, and treating the eye to the ever varying shades of foliage as one glides along for nine miles over the shimmering waters of Kempenfeldt Bay.

Features.

Peninsular Park is largely covered with fine old patriarchal trees saved from the virgin forest. Sturdy old oaks, branching walnuts, graceful elms



LIGHT HOUSE - Big Bay Point.



PENINSULAR PARK HOTEL

and waving pines with their resinous odor pervading, greet the eye all over the place and one can hardly conceive the charm of restfulness that permeates the whole atmosphere.

To the lovers of nature there is everything to please, not the least being the large number of black squirrels with their saucy impertinent chattering as they bound from branch to branch.

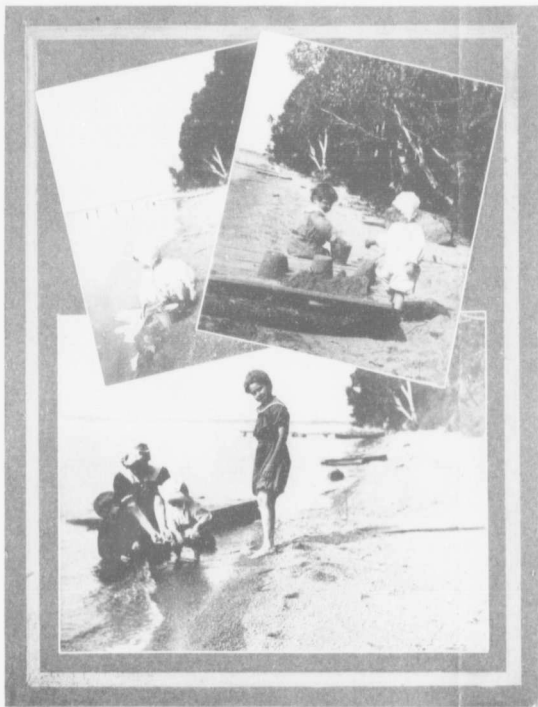


WAITING FOR THE LAUNCH.

Hotel.

In the centre of the park property, is situated the large and commodious Peninsular Park Hotel. Erected at a cost of \$50,000 this has long been noted as one of the finest Summer Resorts in Canada. The building is plastered throughout, the rooms are large and airy, with lofty ceilings; the furniture is of the highest class and the general equipment throughout speaks of the easy refinement so enticing to those anxious to get "far from the

madding crowds ignoble strife." Separate and well equipped nurseries are furnished for those having children, so that the worry of having to provide amusement for the little ones has been forestalled. The hotel has accommodation for 100 guests and the table set is all that the most fastidious could ask for.



PLAYING ALONG THE SHORE IN SAFETY.



A SUN BATH.

Other Features.

The whole property abounds in shady nooks where the brain fagged man can recuperate and rebuild, and the Peninsular always assures calm water no matter which way the wind is blowing. Bathing is absolutely safe, as is the boating, and the intending visitor can thus free his mind from all thoughts of distressing accidents on the water, such as are common to so many summer resorts.



YACHTING ON THE BAY.



A GOOD CATCH.

To those delighting in fishing, the lake and bay afford excellent sport. Black bass, pickerel, perch, white fish and salmon trout are numerous and within easy reach of the park property.

Side Trips.

Numerous excursions are run by the steamer "Otonabee" to the several points of interest on the lake and to accommodate those wishing to form a boating party to some particular spot for the day, the commodious launch "Kempenfeldt" is available at a very moderate charge.



MOONLIGHT ON THE BAY.



FINE SPECIMEN OF LAKE TROUT.



CANOING.



LOVER'S WALK - PENINSULAR PARK.



PLEASANT PASTIME.



LAUNCH KEMPENFELDT—Available for Side Trips.



CANOEING - A popular sport.



"SS. OTONABEE"—Awaiting arrival of Grand Trunk train at Barrie.



CROSSING THE BAY.

From the Motorist Standpoint.

The automobile has been a big factor in the development of Lake Simcoe, and to those contemplating building a cottage to send their families to in the summer and who perforce must spend most of their time in the city, we know of nothing more delightful than the week end motor trip to Peninsular Park. The roads from Toronto right to the Park are splendid for motoring and the everchanging landscape when running up Yonge Street through the several villages, over the Oak Ridges and then skirting along the edge of the lake, is a positive delight.

GOOD REASONS
FOR BUYING AT

Peninsular Park.

The property has been laid out into lots, suitable for an ideal summer resort. It will be seen from the map attached, that instead of the usual checker-board plan with streets running at right angles, the engineers having charge of the lay out, have arranged for winding avenues, drives and walks, and these have been so planned as to interfere as little as possible with the natural woods and groves, which have taken so many years to mature.

All water lots are provided with a driveway at the rear, thus preserving the beauty and natural contour of the shore.

Building restrictions such as will preserve the beauty of the whole property, and ensure a proper development of the Peninsular Park will be exacted.

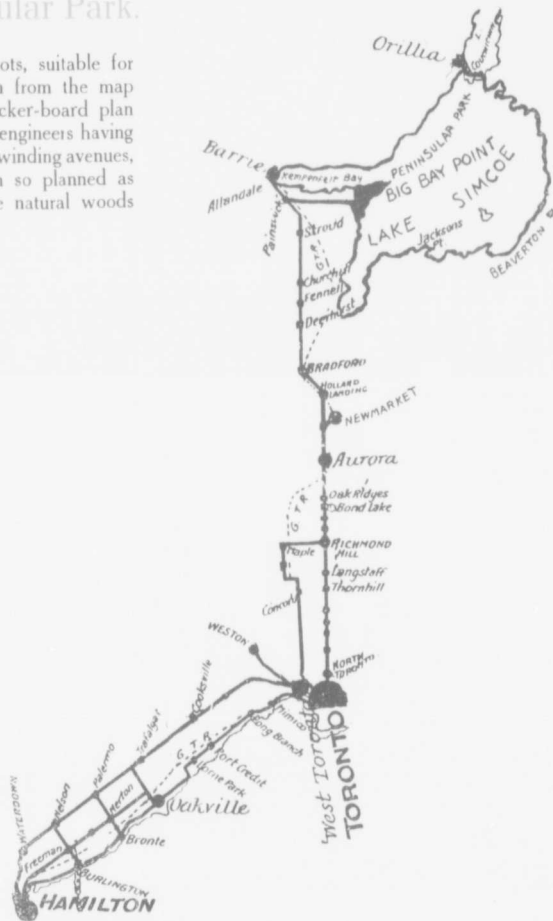
There is a delivery of mail daily and long distance telephone connection. The Barrie merchants provide deliveries of all household necessities as may be required.

To those contemplating building immediately special inducements are offered.

The proprietors of the property are in close touch with contractors open to tender for cottages on designs prepared for the owners, or to assist in designing and mapping out buildings according to the varied tastes of the general summer holiday class.

For further information inquire of the

PENINSULAR PARK SYNDICATE
86 KING STREET WEST
TORONTO



J. O. LUNDY
SALES MANAGER
339 CONFEDERATION LIFE BLDG.

PENINSULAR PARK LAKE SIMCOE ONTARIO



A. G. [Signature]
ONTARIO LAND SURVEYOR
BARRE
1912

