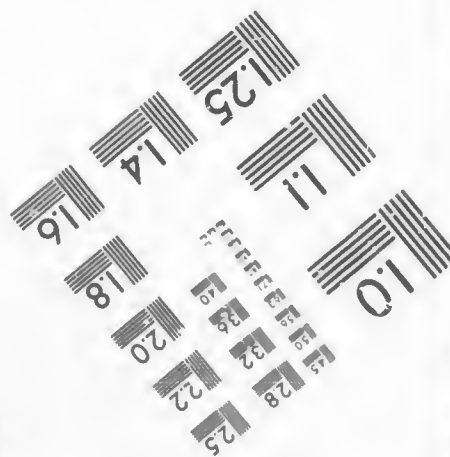
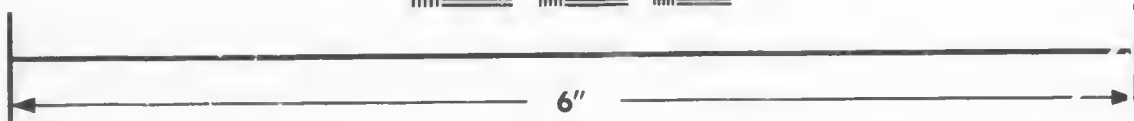
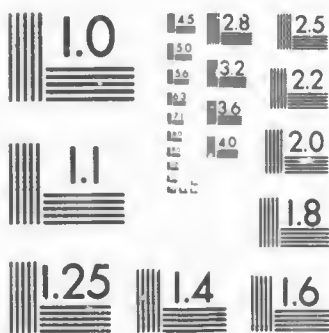


**IMAGE EVALUATION
TEST TARGET (MT-3)**



**Photographic
Sciences
Corporation**

23 WEST MAIN STREET
WEBSTER, N.Y. 14580
(716) 872-4503

**CIHM/ICMH
Microfiche
Series.**

**CIHM/ICMH
Collection de
microfiches.**



Canadian Institute for Historical Microreproductions / Institut canadien de microreproductions historiques

© 1987

Technical and Bibliographic Notes/Notes techniques et bibliographiques

The Institute has attempted to obtain the best original copy available for filming. Features of this copy which may be bibliographically unique, which may alter any of the images in the reproduction, or which may significantly change the usual method of filming, are checked below.

L'Institut a microfilmé le meilleur exemplaire qu'il lui a été possible de se procurer. Les détails de cet exemplaire qui sont peut-être uniques du point de vue bibliographique, qui peuvent modifier une image reproduite, ou qui peuvent exiger une modification dans la méthode normale de filmage sont indiqués ci-dessous.

- Coloured covers/
Couverture de couleur
- Covers damaged/
Couverture endommagée
- Covers restored and/or laminated/
Couverture restaurée et/ou pelliculée
- Cover title missing/
Le titre de couverture manque
- Coloured maps/
Cartes géographiques en couleur
- Coloured ink (i.e. other than blue or black)/
Encre de couleur (i.e. autre que bleue ou noire)
- Coloured plates and/or illustrations/
Planches et/ou illustrations en couleur
- Bound with other material/
Relié avec d'autres documents
- Tight binding may cause shadows or distortion along interior margin/
La reliure serrée peut causer de l'ombre ou de la distorsion le long de la marge intérieure
- Blank leaves added during restoration may appear within the text. Whenever possible, these have been omitted from filming/
Il se peut que certaines pages blanches ajoutées lors d'une restauration apparaissent dans le texte, mais, lorsque cela était possible, ces pages n'ont pas été filmées.
- Additional comments./
Commentaires supplémentaires:

- Coloured pages/
Pages de couleur
- Pages damaged/
Pages endommagées
- Pages restored and/or laminated/
Pages restaurées et/ou pelliculées
- Pages discoloured, stained or foxed/
Pages décolorées, tachetées ou piquées
- Pages detached/
Pages détachées
- Showthrough/
Transparence
- Quality of print varies/
Qualité inégale de l'impression
- Includes supplementary material/
Comprend du matériel supplémentaire
- Only edition available/
Seule édition disponible
- Pages wholly or partially obscured by errata slips, tissues, etc., have been refilmed to ensure the best possible image/
Les pages totalement ou partiellement obscurcies par un feuillet d'errata, une pelure, etc., ont été filmées à nouveau de façon à obtenir la meilleure image possible.

This item is filmed at the reduction ratio checked below/
Ce document est filmé au taux de réduction indiqué ci-dessous.

10X	14X	18X	22X	26X	30X
<input type="checkbox"/>	<input type="checkbox"/>	<input checked="" type="checkbox"/>	<input type="checkbox"/>	<input type="checkbox"/>	<input type="checkbox"/>
12X	16X	20X	24X	28X	32X

The copy filmed here has been reproduced thanks to the generosity of:

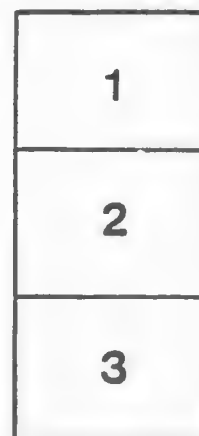
Archives of Ontario
Toronto

The images appearing here are the best quality possible considering the condition and legibility of the original copy and in keeping with the filming contract specifications.

Original copies in printed paper covers are filmed beginning with the front cover and ending on the last page with a printed or illustrated impression, or the back cover when appropriate. All other original copies are filmed beginning on the first page with a printed or illustrated impression, and ending on the last page with a printed or illustrated impression.

The last recorded frame on each microfiche shall contain the symbol \rightarrow (meaning "CONTINUED"), or the symbol ∇ (meaning "END"), whichever applies.

Maps, plates, charts, etc., may be filmed at different reduction ratios. Those too large to be entirely included in one exposure are filmed beginning in the upper left hand corner, left to right and top to bottom, as many frames as required. The following diagrams illustrate the method:



L'exemplaire filmé fut reproduit grâce à la générosité de:

Archives of Ontario
Toronto

Les images suivantes ont été reproduites avec le plus grand soin, compte tenu de la condition et de la netteté de l'exemplaire filmé, et en conformité avec les conditions du contrat de filmage.

Les exemplaires originaux dont la couverture en papier est imprimée sont filmés en commençant par le premier plat et en terminant soit par la dernière page qui comporte une empreinte d'impression ou d'illustration, soit par le second plat, selon le cas. Tous les autres exemplaires originaux sont filmés en commençant par la première page qui comporte une empreinte d'impression ou d'illustration et en terminant par la dernière page qui comporte une telle empreinte.

Un des symboles suivants apparaîtra sur la dernière image de chaque microfiche, selon le cas: le symbole \rightarrow signifie "A SUIVRE", le symbole ∇ signifie "FIN".

Les cartes, planches, tableaux, etc., peuvent être filmés à des taux de réduction différents. Lorsque le document est trop grand pour être reproduit en un seul cliché, il est filmé à partir de l'angle supérieur gauche, de gauche à droite, et de haut en bas, en prenant le nombre d'images nécessaire. Les diagrammes suivants illustrent la méthode.

JULY

1886/7

GRAND TRUNK & RY COMPANY

OFFICIAL TIME TABLE
OF CANADA

The Great **ROUTE** International BETWEEN THE **EAST & WEST**

THE Favourite Route TO

Boston, New York, Buffalo, Niagara Falls, Peterboro', Quebec, Portland, Halifax, Winnipeg, Kansas City, Omaha, St. Paul, St. Louis, Port Huron, London, Hamilton.



MONTREAL,
AND ALL **Chicago, Detroit,**
PRINCIPAL POINTS IN
CANADA AND THE UNITED STATES

L. J. SEARGEANT Traffic Manager. WM. EDGAR, Gen. Pass. Agent. JOSEPH HICKSON General Manager.
H. TAYLOR, Publisher, G. T. R. Office, 20 York-street, TORONTO.

-Niagara Falls, Buffalo, New York -

AND ALL POINTS EAST AND WEST

PALACE STEAMER

“CHICORA”

Leaves Toronto twice daily at 7 a.m., and 2 p.m., for

NIAGARA AND LEWISTON

Connecting with New York Central and Michigan Central Railways. The only route giving passengers a view of Brock's Monument, Whirlpool Rapids, and other points of interest on the historic Niagara river.

TICKETS AT ALL PRINCIPAL OFFICES

The lightest and best in the Dominion of Canada or the United States is manufactured at

J. P. SULLIVAN'S



CARRIAGE WORKS,

14 and 16 Alice Street, - - - TORONTO.

All Orders promptly attended to.

WORK GUARANTEED FOR ONE YEAR.

LEADING TORONTO HOTELS.

THE QUEENS HOTEL

Rates, \$3.00, \$3.50 and \$4.00.

Celebrated for its home comforts, perfect quiet, excellent attendance, and the peculiar excellence of its cuisine, and has been patronized by their Royal Highnesses Prince Leopold and the Princess Louise; the Marquis of Lorne; and the best families. Is most delightfully situated near the Bay on Front Street, and is one of the largest and most comfortable hotels in the Dominion of Canada.

McGAW & WINNETT, Proprietors.

Walker House

TORONTO, ONTARIO.

\$2.00 Per Day.

This favourite commodious hotel, near the Union Station, overlooking Lake Ontario; pleasant summer resort; passenger elevator.

REVERE HOUSE

Cor. King and York Sts., Toronto, Ont.

\$1.00 and \$1.50 PER DAY.

M. DEADY, Proprietor.

N. B.—Special rates to commercial men and the theatrical profession.

See advt. opposite.

ROSSIN HOUSE

TORONTO, ONTARIO, CANADA.

The Leading Hotel in Toronto.

Practically fire proof; strictly first-class; American plan.

Price Graduated, \$2.50 to \$3.50 Per Day
Fire escapes in all bedrooms.

HENRY J. NOLAN,
Chief Clerk.

MARK H. IRISH,
Proprietor

Dalmer House

Cor. KING & YORK STREETS, TORONTO.

This capacious hotel, with 100 well lighted and ventilated boudoirs, elegantly fitted and furnished throughout, will on July 10th be formally thrown open to the travelling public. Elevators, annunciators, electric lights, fine sample room accommodations; a very desirable location and all modern conveniences.

J. C. PALMER,
of Kirby House, Brantford, Proprietor.

AMERICAN HOTEL

TORONTO, ONTARIO.

Newly refitted and renovated throughout; convenient to cars and steamboat landing; free omnibus.

RATES, \$2.00 PER DAY.

Special rates to commercial travellers.

THOS. TAYLOR,
Proprietor.

ED. EDSALL,
Manager

SIMCOE HOUSE

CORNER FRONT AND SIMCOE STREETS.

This house has been thoroughly renovated, and now presents to the travelling public all the conveniences to be found in higher priced houses. Its bed-rooms are the finest and best ventilated in the city, and the proprietors can confidently rank it as the best second-class hotel in Toronto. Terms, \$1 and \$1.50 Per Day. Open Day and Night.

GREEN & CO., Proprietors

OUR MANTLES



Are giving such entire satisfaction to the thousands of customers who have been favoring us with their patronage this season that we feel assured that we have struck the right vein, and draw the correct styles; in fact we know we have just the same goods as are selling in the largest Boston and New York Houses, and fully twenty-five per cent. cheaper than sold there.

Ladies' elegant Check Tweed Ulsters (Vienna Made), for \$6. Ladies' elegant Check Raglans for \$10. Ladies' elegant Street Jackets for \$3.75. Ladies' all wool Jersey Jackets for \$2.50 each. Misses Ulsters (Vienna Made), all wool, \$8. Misses Tweed Shirt Jackets, imported, \$4. Ladies' elegant Beaded Dolmans for \$10. Ladies' stylish Brocaded Dolmans for \$6.

- MILLINERY -

Paris, New York and London Styles. Best Value in Toronto.

Carpets! Curtains!

NOW IS THE TIME TO BUY.

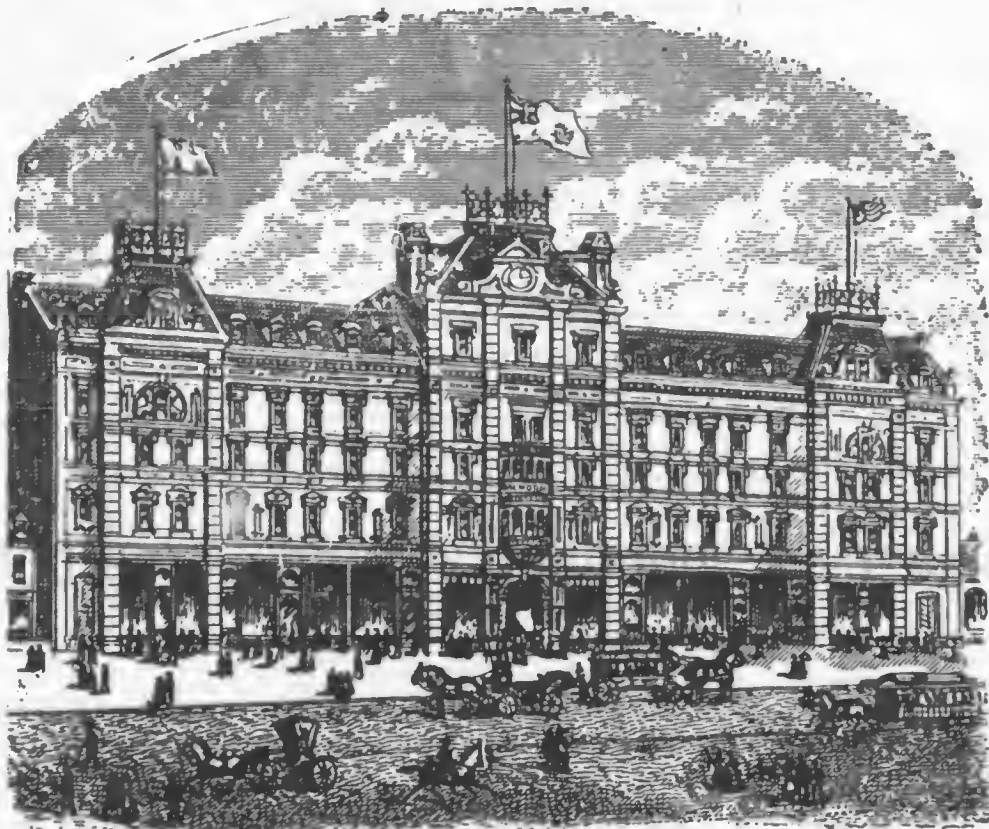
Our special lines are going off fast, but we still have a few of those really excellent tapestry carpets for 25 cents a yard. 5 Frame Brussels at 90c worth \$1.25. Best Tapestry only 65c worth 80. Lovely Wiltons and Axminsters \$1.75, worth \$2.25. Linoleums, Oil Cloths, Matting. We have just received to-day a line of gilt cornice poles, 5 feet long, with End Rings and Brackets complete at 80c. Window Shades, Curtains in all Makes and Smyrna Rugs. Walnut poles, Carpet Fittings for 35 cents.

R. WALKER & SONS,

Golden Lion, TORONTO.

THE BALMORAL HOTEL,

Notre Dame Street,
MONTREAL.



Geo Bishop Eng. & Py. Co. Montreal.

The Balmoral was built during the year 1885, and was opened for the reception of guests on May 24th of last year. It is constructed of Grey Limestone, has a frontage of 210 feet on Notre Dame Street, and is the only First-Class Hotel in the business portion of Montreal. Electric fire alarms in all the bed-rooms connected with the office, fire alarm gongs in each corridor, and all appliances known to modern hotel builders, to add to the comfort, convenience and safety of guests.

RATES, \$2.00 TO \$3.00 PER DAY.

E. H. DUNHAM,
Proprietor.

DOMINION LINE.

ROYAL MAIL STEAMSHIPS.



*VANCOUVER, 5,300 tons.	*OREGON, 3,750 tons.	MONTREAL, 3,300 tons.
DOMINION, 3,200 "	TEXAN, 2,750 "	*SARNIA, 3,750 "
TORONTO, 3,300 "	ONTARIO, 3,200 "	QUEBEC, 2,600 "
	MISSISSIPPI, 2,600 tons.	

SAILING WEEKLY BETWEEN

Quebec, Londonderry and Liverpool,

These steamers are all of the highest class, Clyde built, and in water tight compartments, commanded by men of large experience, and carry stewards, stewardesses, and surgeon.

* The saloons are amidships, where but little motion is felt, and neither cattle nor sheep are carried.

RATES OF PASSAGE FROM PORTLAND :

Cabin, \$50 to \$80, according to steamer and accommodation.

Second Cabin, \$30. Steerage at lowest rates.

For further particulars apply to the local agents in the different towns and cities, or to

GZOWSKI & BUCHAN,
24 King Street East, Toronto.

WM. M. MACPHERSON,
Quebec.

GEO. W. TORRANCE,
18 Front St. West, Toronto.

DAVID TORRANCE & Co.,
Gen. Agents, Montreal.

GRAND TRUNK RAILWAY.

Pullman Palace Sleeping & Drawing Room Car Service

MONTREAL, POINT LEVI AND HALIFAX—Via *Grand Trunk and Intercolonial Railways*.—Tri-weekly line of Pullman Palace Sleeping Cars (operated in connection with the Sleeping Cars of the Intercolonial Railway) leaves Montreal and Halifax on Mondays, Wednesdays and Fridays. Weekly line (steamer special) Pullman Palace Sleeping Cars, running in connection with Allan's Line of Mail Steamers, will leave Montreal Wednesday evenings, arriving at Halifax Thursday mornings, returning from Halifax on arrival of steamer due Fridays.

MONTREAL AND TORONTO—Via *Grand Trunk Railway*.—Line of Pullman Palace Sleeping Cars leaves East and West daily.

MONTREAL AND PORTLAND—Via *Grand Trunk Railway*.—Line of Pullman Palace Sleeping Cars leaves East and West daily, Sundays excepted. Saturday's car from Montreal lays over at Island Pond until Monday morning.

TORONTO AND OTTAWA—Via *Grand Trunk and Canadian Pacific Railways*.—Line of Pullman Palace Sleeping Cars leaves East and West daily.

TORONTO AND DETROIT—Via *Grand Trunk Railway*.—Pullman Car leaves Westward daily, Sunday excepted, and Eastward daily.

MONTREAL AND OTTAWA—Via *Grand Trunk and Canada Atlantic Railways*.—Line of Pullman Palace Parlor Cars leave East and West daily, Sundays excepted.

Through Pullman between Boston and Chicago, leaving Boston 1.00 p.m. daily, Sundays excepted, Montreal 11.50 p.m., Toronto 1.00 p.m. East bound, arriving at Montreal 8.00 p.m., leaving at 8.30 p.m. for Boston. Saturday's car from Chicago lays over at Toronto until Sunday evening, arriving at Montreal Monday morning. Sunday's car Westbound from Montreal leaves at 8.25 p.m.

MONTREAL AND QUEBEC—Parlor Car on day trains leaving Montreal 8.10 a.m. and Point Levi 2.10 p.m. Sleeping Car on night trains leaving Montreal 10.15 p.m., Point Levi 8.30 p.m.; on alternate days running to St. John and Halifax.

MONTREAL AND SPRINGFIELD—Via *Grand Trunk, Central Vermont and Connecticut River Railways*.—Line of Pullman Palace Sleeping Cars leave North and South daily, except Sundays.

MONTREAL, POINT LEVI AND ST. JOHN—Via *Grand Trunk and Intercolonial Railways*.—Tri-weekly line of Pullman Palace Sleeping Cars (operated in connection with the Sleeping Cars of the Intercolonial Railway) leave Montreal and St. John on Tuesdays, Thursdays and Saturdays. Saturday's cars from Montreal and St. John lay over at Point Levi and Campbellton until Monday morning.

MONTREAL AND NEW YORK—Via *G. T., C. V., B. and R., T. and B., and N. Y. C. and H. R. R.*—Line of Sleeping Cars North and South daily.

MONTREAL AND NEW YORK—Via *Grand Trunk, Delaware, & Hudson Canal Company and New York Central & Hudson River Railways*.—Line of Sleeping Cars North and South daily.

MONTREAL AND BOSTON—Via *Grand Trunk, Central Vermont, Northern, Concord and Boston & Lowell Railways*.—Line of Pullman Buffet Parlor and Sleeping Cars leave North and South daily, Sundays excepted.

MONTREAL AND CHICAGO—Via *Grand Trunk, and Chicago and Grand Trunk Railways*.—Line of Pullman Palace Sleeping Cars leaves East and West daily, Sundays excepted, from Montreal, Saturdays excepted for Chicago.

MONTREAL AND POINT LEVI—Line of Parlor Cars leave East and West daily, except Sunday.

MONTREAL, PORTLAND AND OLD ORCHARD BEACH—Line of Parlor Cars East and West daily, Sundays excepted, leaving Montreal 8.10 a.m.; returning leave Old Orchard Beach at 7.47 a.m., and Portland 9.30 a.m.

BOSTON AND GORHAM—Line of Parlor Cars East and West daily, Sundays excepted, on train leaving Portland 1.30 p.m.; returning leave Gorham 8.45 a.m.

TORONTO AND KINGSTON WHARF—Line of Sleeping Cars East and West daily, leaving Toronto at 8.00 p.m.; returning leave Kingston Wharf at 4.55 a.m.

To Buffalo, Suspension Bridge, New York, Boston, &c.

NO. 52, LIMITED EXPRESS—Leaves Detroit 12 midnt. daily. Has Sleeping Cars from Chicago to New York, via C. & G. T.; G. T., & W. S. Railways. Also Chicago to New York, via Short Line, G. T. & West Shore Railways; Detroit to Rochester via G. T. and N. Y. C. Railways.

Through Coaches Chicago to Suspension Bridge via Short Line & G. T. Railways. Also Chicago to Buffalo via C. & G. T., G. T. & Erie Railways.

[OVER.]

Grand Trunk Railway.—Pullman Palace Sleeping and Drawing Room Car Service.—Continued.

NO. 56, ATLANTIC EXPRESS—Leaves Detroit at 6.25 a.m. daily. Has Sleeping Cars Chicago to New York, via C. & G. T.; G. T. & Erie Railways; also Chicago to New York, via C. & G. T., G. T. and W. S. Railways. Chicago to Boston, via Short Line, G. T., W. S., B. H. T. & W. and Fitch Railways. Also Chicago to Boston, via C. & G. T., G. T., W. S., B. H. T. & W. and Fitch Railways.

Through coach Chicago to Suspension Bridge via Short Line and G. T.; also Chicago to Buffalo via C. & G. T., G. T. & Erie Railways. Dining Car, Windsor to Hamilton.

No. 54, ST. LOUIS EXPRESS—Leaves Detroit 12.05 p.m. daily. Has Sleeping Car St. Louis to Boston, via Wab. West R'ys, G. T., West Shore, B. H. T. & W. and F. Railways. Parlor Car Detroit to Suspension Bridge, Dining Car Hamilton to Suspension Bridge.

No. 8, DAY EXPRESS—Sleeping Car Toronto to New York via G. T. and Erie Railways on train leaving Toronto 3.55 p.m., except Sunday, connecting with St. Louis Express from Suspension Bridge.

From Buffalo, Suspension Bridge, New York, Boston, &c.

NO. 51, CHICAGO EXPRESS—Leaves Buffalo (Erie Depot) at 10.50 p.m., Sundays train leaves at 10.15 p.m.; N.Y.C. depot, 11.50 p.m. daily, and Suspension Bridge 12.50 a.m. daily. Has Sleeping Car New York to Chicago via West Shore and G. T., and C. & G. T. Railways; Rochester to Detroit via N. Y. C. & H. R. R. and G. T.; and through coach Buffalo and Suspension Bridge to Chicago via Erie, G. T., & C. & G. T. Railways.

NO. 53, ST. LOUIS EXPRESS—Leaves Buffalo (Erie Depot) 6.30 a.m. daily; N.Y.C. depot, 6.45 a.m. daily, and Suspension Bridge 7.45 a.m. daily. Has Sleeping Car Boston to St. Louis, via Fitch, B. H. T. & W.; West Shore; G. T. & Wab. West R'ys; New York to Chicago, via West Shore, G. T., and Short Line; Boston to Chicago, via Fitch, B. H. T. & W., W. S., G. T. and Short Line. Sleeping Car New York to Toronto via Erie and Grand Trunk Railways, except Sundays, when car only runs to Suspension Bridge. Through coach Suspension Bridge to Chicago, via West Shore, G. T. and Short Line.

Dining Car Niagara Falls to Hamilton.

NO. 55 PACIFIC EXPRESS—Leaves Buffalo (Erie Depot) at 12.15 p.m. and Suspension Bridge at 1.15 p.m. daily. Has Sleeping Cars New York to Chicago, via West Shore, G. T. and C. & G. T. Railways; also Boston to Chicago via Fitch, B. H. T. & W., West Shore; G. T. & C. and G. T. Railways; New York to Chicago via Erie, G. T. and C. & G. T. Railways.

Through coach Buffalo to Chicago via Erie, G. T. & C. & G. T., and Suspension Bridge to Chicago via G. T. and Short Line.

Dining Car Suspension Bridge to Windsor.

TARIFF FOR DOUBLE BERTHS IN SLEEPING CARS

BETWEEN

Boston and Montreal	\$2.00	Chicago and Boston, via Buffalo.....	\$5.50
Montreal and Quebec	1.50	Chicago and New York, via Buffalo.....	5.00
Montreal and Portland	2.00	Chicago and Buffalo.....	3.00
Montreal and New York.....	2.00	Chicago and Toronto.....	3.00
Boston and Detroit, via Montreal.....	4.00	Chicago and Detroit.....	2.00
Boston and Chicago, via Montreal	5.50	Chicago and San Francisco	17.00
Springfield and St. Albans	2.00	Chicago and St. Louis.....	2.00
Montreal and Toronto.....	2.00	Chicago and St. Paul.....	2.00
Montreal and Detroit	3.50	Chicago and Kansas City.....	3.00
Montreal and Chicago.....	5.00	Chicago and Cairo.....	2.00
Portland to Chicago, via Montreal.....	5.50	Quebec and Halifax.....	4.00
Quebec and St. John.....	3.50	Montreal and Halifax.....	5.00
Montreal and St. John	4.50		

GRAND TRUNK RAILWAY

General Office, Montreal, Canada.

London Office, Dashwood House, 9 New Broad St., London, Eng.

DIRECTORS.

SIR HENRY W. TYLER, M.P., President, London, England.]
 SIR CHARLES LAWRENCE YOUNG, B.A., Vice-President, London, Eng
 LORD CLAUD JOHN HAMILTON, M.P.
 ROBERT YOUNG, Esq.
 ROBERT GILLESPIE, Esq.
 WILLIAM UNWIN HEYGATE, Esq.
 JAMES CHARLES, Esq.
 HON. JAMES FERRIER, Montreal, Canada.
 JOHN MARNHAM, Esq.
 MAJOR ALEXANDER GEORGE DICKSON, M.P.

OFFICIALS OF THE SYSTEM.

JOSEPH HICKSON, General Manager.....	Montreal, Canada.
L. J. SEARGEANT, Traffic Manager.....	" "
W. WAINWRIGHT, Assistant Manager.....	" "
ROBERT WRIGHT, Treasurer.....	" "
H. W. WALKER, Accountant.....	" "
T. B. HAWSON, Traffic Auditor.....	" "
T. TANDY, General Freight Agent.....	" "
WM. EDGAR, General Passenger Agent.....	" "
H. K. RITCHIE, Stationery Agent.....	" "
JOHN TAYLOR, General Storekeeper.....	" "

DIVISIONAL OFFICERS:

J. STEPHENSON, Superintendent East of Toronto and Northern Division.....	Montreal, Canada.
CHARLES TIPP, Superintendent Southern Division.....	Hamilton, Canada.
E. WRAGGE, Local Manager.....	Toronto, "
E. P. HANNAFORD, Chief Engineer.....	Montreal, "
JOSEPH HOBSON, Chief Engineer.....	Hamilton, "
J. G. MACLIN, Engineer.....	Peterboro, "
H. WALLIS, Mechanical Superintendent.....	Montreal, "
C. K. DOMVILLE, Mechanical Superintendent.....	Hamilton, "
JOHN EARLS, District General Freight Agent.....	Toronto, Canada.
A. BURNS, District General Freight Agent.....	Montreal, "
ARTHUR WHITE, District General Freight Agent.....	Toronto, "
J. W. LOUD, General Freight Agent Through Traffic.....	Detroit, Mich.
E. R. BAINES, Storekeeper.....	London, Canada,

UNITED STATES AGENCIES.

E. P. BRACH, General Agent, 271 Broadway.....	New York, N.Y.
F. A. HOWE, Freight Agent, 103 South Clark Street.....	Chicago, Ill.
W. ROBINSON, Michigan and South-Western Passenger Agent, cor. Jefferson and Woodward Avenues.....	Detroit, Mich.
W. C. TALLMAN, New England Passenger Agent, 280 Washington Street.....	Boston, Mass.
G. H. PERKINS, Freight Agent, 280 Washington Street.....	Boston, Mass.
G. B. ONWELL, Central Passenger Agent, 624 Ford Street.....	Jgdensburg, N.Y.
T. D. SHERIDAN, Northern Passenger Agent, 177 Washington Street.....	Pittsboro, N.Y.
S. MCCREA, Freight Agent, 177 Washington Street.....	Buffalo, N.Y.

TIME STANDARD.

EASTERN STANDARD: From Saruia (Pt. Edward) and Windsor East.

CENTRAL STANDARD: Fort Gratiot, Detroit and West.

GRAND TRUNK RAILWAY, MAIN LINE.

MONTREAL, QUEBEC, PORTLAND, AND BOSTON.

GOING WEST.							GOING EAST.							Sat'y only.		
Pass	Pass	Pass	Pass	Mxd	Pass	Mls	STATIONS.		Pass.	Pass	Pass	Pass	Mxd	M	d	
A.M.	P.M.	A.M.	A.M.	P.M.	P.M.		Arrive	Leave	A.M.	P.M.	P.M.	P.M.	A.M.			P.M.
8.50	8.15	11.55	6.00	6.35	7.45	0	Montreal		8.10	3.15	5.20	10.15	6.45			1.40
8.30	7.55	11.35	5.40	6.05	7.20	6½	St. Lambert.....		8.30	3.35	5.40	10.40	7.30			2.05
8.22	11.28	11.27		5.48	7.11	10	St. Hubert.....			3.43	5.48		7.45			2.13
8.10	11.17	11.16		5.30	6.58	15	St. Bruno.....			3.55	6.01		8.10			2.24
*8.00	*7.27			*5.15		1½	St. Bazile.....				*6.07		8.20			
7.54		11.02	4.53	5.01	6.40	21	Belœil.....		*9.01	4.09	6.15	11.18	8.30			2.40
7.50	7.23	10.58	4.48	4.55	6.25	22½	St. Hilaire.....		9.04	4.13	6.22	11.23	8.35			2.55
7.35		10.45		4.25	p.m.	28½	St. Madeleine.....			4.25	6.38		8.57			
7.18	7.00	10.28	4.06	4.00	Sat'y only.	35½	St HYACINTHE.....	{ Ar. Lve.	9.33				9.23			
7.12		*10.23		3.50		37½	Ste. Rosalie.....		9.33	4.43	7.00	11.59	9.43			
7.00		10.12		3.30		42½	Britauna Mills.....			4.48	7.04		*9.50			
6.55		10.07	*3.36	3.22		44½	St. Liboire.....			5.00	7.15	A.M.	10.12			
6.47	6.33	10.00	3.25	3.09		48	Upton.....		10.00	5.12	7.29	12.32	10.20			
6.30	6.21	9.47	3.05	2.43		54½	Actonvale.....		10.11	5.27	7.45	12.49	11.05			
A.M.		9.31		2.13		62	Danby (Old Durham).....			5.45			11.40			
	5.57	9.22	2.24	1.55		66½	South Durham.....		*10.32	5.57	P.M.	*1.22	11.50			
		9.17		1.45		69	Lisgar.....			6.02			12.10		Mxd	
	5.35	9.00	1.50	1.15		76½	Lve. } RICHMOND.. { Arr. Lve.	10.50	6.22		1.50	12.45		A.M.		
	5.20	8.55	12.40	12.55		76½	Arr. } Windsor Mills.....	*11.20	6.40		2.15	1.58	P.M.	6.00		
	5.00	8.33	12.15	12.25		86½	Brompton Falls.....		11.43	7.25		*3.03	2.24		7.22	
*4.42	3.15	11.55	12.03			94½	SHERBROOKE.....		11.48	7.41		3.21	3.03		8.00	
4.28	8.00	11.40	11.43			101	Lennoxville.....		11.48	7.48		3.29	3.15		8.12	
	4.22	7.47	11.31	11.2		104	Waterville.....			P.M.	8.06	*3.48	3.46		8.47	
		7.32	*11.14	11.05		111	Compton.....		12.05	8.15		3.57	4.0		9.05	
	*4.00	7.25	11.05	10.52		114	Hillhurst.....			*8.22			*4.15		*9.19	
	3.53	*7.20		10.40		117½	Coaticooke.....		12.17	8.35		4.19	5.05		10.20	
	3.43	7.09	10.45	10.20		122½	Dixville.....			*8.47			*5.25		10.40	
		*6.58		*9.43		127½	Norton Mills.....		12.32	9.00		4.45	5.46		11.00	
	*3.23	6.49	10.20	9.27		132	Lake.....			9.11			6.08		11.21	
		*6.38		*9.09		137	Summit.....			*9.22			*6.29		11.40	
		*6.29		*8.53		141½	Lve. } ISLAND POND { Arr. Lve.	1.00	9.40		5.30	7.00	M PM	12.10		
7.50	2.20	A.M.	c8.20	a.m.	4.20	148	Arr. } Wenlock.....	1.25	P..		6.20	8.30	M. A	M 510		
7.22			*8.02		3.55	155½	North Stratford.....		1.50			6.52	9.25		6.17	
6.52	1.50		7.43		3.30	162½	Beatties.....					*7.00	9.35		*6.35	
6.40			*7.33		3.18	166½	Stratford Hollow.....					7.08	9.53		6.51	
6.25			7.21		3.05	170½	Groveton Junction.....		2.08			7.16	10.08		7.09	
6.07	1.29		7.14		2.50	174½	Groveton.....		2.10			7.19	10.10		7.12	
6.03	1.28		7.12		2.48	175½	Stark.....					7.31	10.30		*7.37	
5.40			6.58		2.30	180½	Percy.....		*2.22			7.35	10.38		7.47	
5.32	*1.13		6.53		2.22	183	West Milan.....					7.47	10.57		*8.10	
5.10			6.40		2.03	183	Copperville.....					7.58	11.17		8.35	
*4.49			6.25		*1.43	193½	Berlin Falls.....		2.50			8.11	11.40		9.00	
4.25			6.11		1.25	199	Lve. } GORHAM... { Arr. Lve.	3.00	A.M.		8.25	12.05		9.30		
4.00	12.42		5.55		1.00	205½	Arr. } Shelburne.....	3.00	5.10		8.45	12.30		P.M.		
	12.30		5.35		8.30	P.M.	Gilead.....		*3.11	5.22		8.58	12.53			
	12.19		5.20	*8.19	Mxd	211½	West Bethel.....			5.34		9.10	1.16			
A. M.	12.08		5.07	8.09		217½	Bethel.....		*3.32	5.46		9.22	1.40			
	11.56		4.50	7.58		223½	Locke's Mills.....		3.33	5.53		9.31	1.57			
	11.48		4.40	7.50		227½	Bryant's Pond.....		*3.45	6.03		9.41	2.17			
	11.40		4.28	7.41		232	West Paris.....		*3.52	6.10		9.48	2.31			
	11.33		4.20	7.35		235½	SOUTH PARIS.....		4.03	6.20		10.02	2.55			
	11.22		4.03	7.24		241½	Arr. SOUTH PARIS.. Lve.	6.40	10.25	11.10	3.40	7.10		4.20		
	11.07		3.35	7.09		250	Lve. NORWAY..... Arr.	6.45	10.30	11.15	3.45	7.15		4.25		
6.35	10.15	11.05	3.30	4.16	7.00	250	Oxford.....			6.52		10.33	3.55			
6.30	10.10	11.00	3.25	4.10	6.55	252½	Canton.....			4.30		9.15				
	10.55		8.17	6.56		256½	Buckfield.....			5.45		9.55				
11.15					11.15		via R. F. & B. R.R.									
10.15			3.55	7.30		10.15	Mechanic Falls.....		4.39	7.01		10.45	4.12			
8.45	10.45		3.05	6.47	8.45	261½	Empire Road.....			7.10	P.M.	*10.52	*4.26			
8.27	10.37	P.M.	2.54	6.4	8.27	265½	Lewiston.....	p.m.	a5.08	7.15	2.00	a11.15	10.15	a7.42	4.23	
8.27	11.15	2.24	d8.15	6.47	d8.00	0	Auburn.....	a.m.	5.06	7.17	2.02	d11.13	10.17	7.40	4.25	
8.25	11.13	2.22	d6.17	6.45	8.02	½	Lewiston Junc.....	a.m.	d4.55	7.27	2.12	d11.00	10.30	d7.30	4.35	
8.15	11.00	2.22	a6.27	6.35	a8.13	5½	Lewiston Junc.....	{ Arr. Lve.	4.50	7.27	2.12	10.57	5.05		4.35	
8.15	10.23	2.12	2.47	6.35	8.15	267½										

MONTREAL, QUEBEC, PORTLAND AND BOSTON.—Continued.

GOING WEST.							STATIONS.	GOING EAST.						
Pass.	Pass	Pass.	Pass	Pass	Mxd	Mls.		Pass.	Pass.	Pass	Pass.	Mxd	Mxd	Mxd
A.M.	A.M.	P.M.	A.M.	P.M.			A.M.	A.M.	P.M.	A.M.	P.M.	P.M.	P.M.	
8.10	10.28	2.07	2.43	6.33	260½	DANVILLE JUNCTION...	4.54	7.31	2.15	11.02	5.12	4.39
7.57	2.27	6.21	274½	New Gloucester.....	7.40	2.27	11.13	*5.36	4.50
7.47	2.17	6.14	278½	Pownal.....	7.47	2.35	11.22	5.52	*4.57
7.41	2.08	6.07	282	North Yarmouth.....	7.54	2.42	11.29	6.07	*5.04
7.33	9.55	1.37	2.00	6.02	285½	Yarmouth Junction...	5.21	8.00	2.48	11.37	6.18	5.10
7.32	9.53	1.36	1.58	6.00	286	Yarmouth.....	5.23	8.02	2.50	11.40	6.22	5.12
*7.27	1.50	5.54	288½	Cumberland.....	8.07	2.50	11.45	*6.30	*5.17
7.21	*9.42	1.25	1.45	5.49	291½	Falmouth.....	*5.33	*8.13	3.02	11.51	*6.40	*5.23
*7.15	*1.36	*5.43	295½	Deering.....	9.20	6.55	*5.29
....	1.33	5.41	295½	Portland & R. Junc...	5.41	12.01
7.10	9.30	1.15	1.30	5.37	297½	Portland.....	5.45	8.25	3.15	12.05	7.04	5.35
....	P.M.	P.M.	P.M.	Boston, B. & M. {
....	8.30	8.30	1.00	Leave	{ Arr.	9.30	1.15	8.00	4.45	9.30
A.M.	A.M.	A.M.	A.M.	P.M.		P.M.	P.M.	P.M.	P.M.	P.M.	P.M.

Note (c) Saturday night train remains over Sunday at Island Pond.

Train leaves Lewiston at 10.15 a.m., Auburn 10.17, to connect at Lewiston Junction with 9.30 a. m. train for Montreal and West.

STEAMBOAT CONNECTIONS, ETC.—Weather permitting.—QUEBEC AND PORTLAND—Ocean Steamers connect with Grand Trunk at Quebec in Summer and Portland in Winter. PORTLAND—International Steamships for St. John, N.B., and Intermediate ports, leave Mondays, Wednesdays and Fridays at 5.00 p.m. PORTLAND—Maine Steamship Company Steamers One of the fine Steamers "Franconia" and "Eleanora," leaves for New York Wednesday and Saturday at 6 p.m. PORTLAND—Portland Steam Packet Company—The Steamer "John Brooks" or "Forest City" leaves for Boston every evening, (Sundays excepted), at 7 o'clock.

NOTE.—The Company not responsible for punctuality in the arrival and departure of Trains, depending upon connections with other Lines. Mixed Trains are at all times subject to be cancelled.

REFRESHMENT ROOMS at Portland, Gorham, Island Pond, Richmond, Montreal, Cornwall, Kingston, Cobourg, Toronto, Hamilton, Stratford, Sarnia and Fort Gratiot.

MONTREAL AND OTTAWA.

Mls.	STATIONS.	Express.	Express.	Mls.	STATIONS.	Express.	Express.
00	Montreal.....Lv.	8.50a.m.	4.30p.m.	0	Ottawa.....Lv.	7.45a.m.	4.35p.m.
20 55	St. Anne....."	*9.27 "	*5.07 "	11	Eastman's Springs.. "	8.21 "	5.09 "
24 25	Vaudreull....."	*9.35 "	*5.15 "	22	South Indian.. "	8.39 "	5.23 "
37 48	Coteau....."	10.00 "	5.40 "	29	Casselman....."	8.52 "	5.39 "
41 00	St. Polycarpe....."	10.09 "	5.49 "	43	Maxville....."	9.15 "	6.02 "
52 00	Glen Robertson....."	10.28 "	6.08 "	48	Greenfield....."	9.23 "	6.12 "
60 00	Alexandria....."	10.44 "	6.24 "	55	Alexandria....."	9.39 "	6.28 "
67 00	Greenfield....."	10.57 "	6.27 "	63	Glen Robertson....."	9.53 "	6.41 "
71 00	Maxville....."	11.06 "	6.46 "	74	St. Polycarpe....."	10.12 "	7.00 "
85 00	Casselman....."	11.29 "	7.09 "	78	Coteau....."	10.20 "	7.06 "
92 00	South Indian....."	11.42 "	7.22 "	91	Vaudreull....."	*10.48 "	*7.32 "
1 03	Eastman's Springs "	12.01p.m.	7.41 "	94	St. Anne....."	10.55 "	*7.40 "
16 50	Ottawa.....Ar.	12.45p.m.	8.15p.m.	116	Montreal.....Ar.	11.30a.m.	8.20p.m.

CANADA PAPER CO'Y

Paper Makers & Wholesale Stationers,

572 to 582 Craig St., MONTREAL. 11 Front St. W., TORONTO.

MILLS: Windsor Mills, Springvale Mills.

Manufacturers of Writing, Book, Envelope, News and Coloured Papers, Wrapping Papers, Envelopes, &c. Building Board, Carpet and Roofing Felt in Stock.

Agents for Fleming's (Edinburgh) Printing Inks and Marinoni (Paris) Printing Presses.

GRAND TRUNK RAILWAY MAIN LINE.

GOING EAST.							STATIONS.	GOING WEST.							
Chicago and Detroit, to Toronto and Montreal.								Montreal to Toronto, Detroit and Chicago.							
Exp.	Exp.	Exp.	Pass	Pass	Mxd	Mls.		Sat. o'ly	Pass	Mxd	Pass.	Pass.	Pass.	Pass.	
P.M.	A.M.	P.M.	A.M.	A.M.	P.M.		Arriv	Leave	P.M.	P.M.	A.M.	P.M.	P.M.	P.M.	
.....	8.00	8.00	9.10	8.25	9.00	6.15	0	Montreal.....	2.00	6.20	1.30	8.55	8.25	11.50	5.00
.....	8.20	8.55	5.05	1½	St. Henri.....
.....	8.08	8.41	4.45	7½	Lachine Junction.....	1.05	6.28	1.40	9.08	8.37	12.01	5.08
.....	7½	Jacques Cartier..	2.17	6.37	1.53	5.17
Trains for Montreal leave 8.25 a.m. & 5.50 p.m.							St. Laurent. Trains leave for Montreal 7.50 a.m. & 5.15 p.m.								
.....	8.45	8.02	8.35	4.28	10	Dorval.....	2.23	6.43	*2.00	5.23
.....	*8.38	7.55	8.25	12½	Valoisville.....	2.28	6.48	5.31
.....	8.35	7.50	8.22	4.08	14½	Pte. Claire.....	2.32	6.52	2.15	9.30	*9.03	5.35
.....	7.47	8.19	15½	Beaconsfield.....	2.35	6.55	5.38
.....	8.21	7.35	8.07	3.50	20½	Ste. Annes.....	2.46	7.05	2.30	9.42	*9.15	5.47
.....	7.15	8.12	7.25	7.58	3.35	24½	Vaudreuil.....	2.55	7.15	2.44	9.50	9.22	5.57
.....	7.48	29	Cedars.....	6.07
.....	7.43	3.08	31	St. Dominique.....	3.08	10.08	6.12
.....	7.38	34½	Riviere Rouge.....	6.19
.....	6.38	7.40	7.30	2.47	37½	Coteau Junction.....	3.28	10.17	9.47	6.27
.....	7.25	39½	St. Zotique.....	6.31
.....	6.43	16	Ottawa, via C. A. R.	A.M.
.....	6.40	7.02	7.20	2.28	43	Riviere Beaudette.....	3.46	10.30	9.58	6.40
.....	7.08	2.10	48½	Bainsville.....	4.0*	*10.42	*6.51
.....	7.02	6.57	1.52	52½	Lancaster.....	4.20	10.52	10.20	7.02
.....	6.47	1.34	59½	Summerstown.....	4.38	*11.03	7.15
.....	5.53	5.32	6.30	6.30	1.07	67½	Lve } CORNWALL { Ar	5.05	11.20	10.46	2.02	7.35
.....	5.53	5.32	6.12	A.M.	1.07	67½	Arr } } Lv	5.05	11.35	2.02
.....	6.03	12.50	72½	Mille Roches.....	5.20	*11.46
.....	5.12	5.58	12.35	77	Wales.....	6.00	11.57	11.05
.....	*	12.20	81½	Farran's Point.....	*6.15
.....	5.40	12.12	83½	Aultsville.....	0.22	12.12	*11.17
.....	P.M.	92½	Morrisburg.....	6.48	12.34	11.35
.....	4.40	5.22	11.42	99	Iroquois.....	7.10	12.50	11.48
.....	*4.25	11.17	104½	Cardinal.....	7.28	1.02	*11.59
.....	4.57	10.57	112	Lve } PRESCOTT { Ar	7.50	1.20	12.15	8.25
.....	3.58	4.42	10.30	120½	Maitland.....	8.15	1.39	3.40
.....	3.58	4.42	10.00	120½	Lv } BROCKVILLE { Ar	8.30	1.50	12.43	3.48
.....	4.00	3.30	4.15	9.45	125	Ar } } Lv	5.30	1.55	12.43	3.48
.....	8.05	3.30	3.50	Ottawa, Arr. via C.P.R.	A.M.	10.00	8.30	8.30
.....	7.00	7.25	7.00	P.M.
.....	A.M.
.....	3.37	9.00	129½	Lyn.....	5.45	2.05	*12.55
.....	3.14	8.34	137½	Mallorytown.....	6.07	2.22	*1.12
.....	2.43	8.02	146	Lansdowne.....	6.42	2.43	*1.31
.....	Lve Gananoque. Arr
.....	Ar via T. I. R'y. Lve
.....	Gananoque Junction..	7.13	3.00	1.50
.....	8.00	2.23	2.20	7.32	155	Ballantyne's.....	7.40	*8.13	2.07
Mxd	2.07	*6.45	162½	Rideau.....	Mxd	*8.05	*8.29
.....	*1.46	Mxd	6.30	Lv } KINGSTON JC. { Ar	8.15	3.85	5.17
.....	2.25	1.45	1.35	P.M.	Ar } } Lv	7.00	8.15	3.35	2.80	5.17
10.00	2.05	1.45	1.20	11.20	Lv } KINGSTON .. { Ar	A.M.	8.30	3.50	2.45	5.30
A.M.	1.15	1.25	1.15	6.15	172½	Ar } } Lv	6.15	7.55	3.15	2.10	4.55
10.15	2.20	2.00	2.20	11.35	A.M.	Collin's Bay.....	7.25	8.40	*3.50	*2.43
9.35	1.04	10.58	180	Ernestown.....	7.52	9.05	4.05	*2.58
9.10	12.47	10.27	187½	Fredericksburg.....	*8.12	9.27	*4.17
*8.47	*12.33	19.05	193½	Napanee.....	8.30	9.45	4.27	3.20	6.05
8.30	1.20	12.55	12.22	9.45	198½	Lv } TAMWORTH .. { Ar	12.20	6.25	12.20
10.30	4.45	10.30	Ar } via N.T. Q.R. { Lv	10.30	4.45	10.30
12.20	6.25	12.20
.....	8.08	12.45	12.10	9.25	203½	Deseronto Junction	8.33	10.05	4.36	3.30
.....	7.45	12.15	11.40	9.00	Lv Deseronto, Ar	4.05
.....	Ar via B. of Q. R'y. Lv	7.45	9.00	3.00
.....	7.57	*	12.08	9.14	206½	Marysville.....	9.05	10.15	4.42	*3.36
7.30	1.48	8.45	213	Shannonville.....	9.35	10.43	4.45	*3.48
7.55	12.40	12.10	11.30	8.15	Lv } PALMERVILLE.. { Ar	10.10	11.10	5.10	6.45
A.M.	A.M.	P.M.	229½	Ar } } Lv	P.M.	11.35	5.15	4.05
.....	12.40	12.05	11.25	8.05
.....	P.M.	A.M.	A.M.

GOOD FOR ALL TO KNOW.

Our preparations can be used both as a Confection or for any trouble of the Throat resulting from colds, &c. Ask for any of the articles named below, and take no other.

"Y. & S. Brand" Pure Calabria.

Ringed Licorice Pure Calabria.

Acme Licorice Pellets.

Tar, Licorice and Tolu Wafers.

Licorice (Y. & S. brand) Lozenges.

MANUFACTURED EXCLUSIVELY BY

YOUNG & SMYLLIE,

58, 60, 62 and 64 South 5th St.,

BROOKLYN, NEW YORK.

GRAND TRUNK RAILWAY MAIN LINE.

GOING EAST.								STATIONS.	GOING WEST.					
Chicago and Detroit, to Toronto and Montreal.									Montreal to Toronto, Detroit and Chicago.					
Mxd	Exp.	Exp.	Exp.	Pass	Pass	Mxd	Mls.		Mxd	Mxd.	Pass.	Pass.	Pass.	Pass.
	A.M.	P.M.	A.M.	P.M.	P.M.			P.M.	P.M.	P.M.	A.M.	A.M.		
.....	11.13	7.44	226	Sldney	11.57	5.28	
.....	11.40	11.02	7.25	232	Trenton	12.20	5.40	4.25	
.....	7.03	238	Smithfield.....	12.37	
.....	11.21	10.42	6.50	241	Brighton	12.48	6.02	4.44	
.....	11.05	10.25	6.20	249	Colborne	1.12	6.20	4.59	
.....	10.51	10.11	5.53	255	Grafton	1.33	6.35	*5.12	
.....	11.20	10.35	9.55	5.23	233	Lv } COBOURG.. { Arr.	1.57	6.55	8.05 A.M.	
.....	11.20	10.35	9.45	5.23	8.25	233	Ar }	1.57	7.10	5.27	8.15 7.15	
.....	11.08	10.20	9.32	4.55	8.06	270	PORT HOPE	2.20	7.25	5.41	8.23 7.29	
.....	9.17	4.25	7.45	278	Newtonville	2.45	7.45 7.45	
.....	9.02	3.54	7.27	286	Newcastle	5.12	8.03	9.02 8.03	
.....	9.41	8.53	3.38	7.18	290	Bowmanville	3.38	8.13	6.20	9.12 8.12	
.....	*8.46	*3.25	7.11	293	Darlington	*3.48	*8.19	
.....	9.23	8.33	3.05	6.57	299	Oshawa	4.10	8.35	6.33 8.33	
.....	9.15	8.25	2.52	6.50	303	Whitby Junction	4.25	8.45	6.47 8.41	
.....	9.55	9.02	8.14	2.31	6.35	309	Pickering	4.46	9.02	9.55 8.55	
.....	8.01	2.10	6.20	316	Port Union	5.12	9.17 9.09	
.....	9.25	7.47	1.45	6.02	324	Scarboro Junction	5.40	9.35 9.25	
.....	9.20	8.25	7.40	1.35	5.55	326	York	5.55	*7.35 9.35	
.....	7.23	1.13	5.43	331	Don	6.07	9.57	7.47	10.47 9.47	
.....	8.55	8.00	7.15	1.00	5.30	331	Lv }	6.20	10.10	8.00	11.00 10.00	
.....	A.M.	P.M.	A.M.	P.M.	P.M.	333	Ar } Toronto.. { Lv	P.M.	P.M.	A.M.	P.M.	P.M.
.....	8.10	7.30	9.40	11.45	12.30	333	6.30	11.25	8.10	1.00	4.10 4.10	
.....	8.04	7.23	9.30	11.35	12.20	334	North Parkdale	6.40	*11.35	8.19	1.09	4.18 4.18	
.....	7.17	9.20	11.20	12.13	338	Carlton	6.52	11.43	8.26	1.16	4.25 4.25	
.....	7.11	9.10	11.12	12.06	341	Weston	7.11	11.50	8.34	1.22	4.38 4.38	
.....	6.57	8.50	10.53	11.51	358	Malton	7.30	12.07	8.50	*1.34 4.48	
.....	7.33	6.43	8.29	10.37	11.36	354	Brampton	7.48	12.25	9.05	1.50 5.04	
.....	6.30	8.13	10.21	11.21	359	Norval	8.03	12.37	9.18	*2.01 5.17	
.....	6.24	8.04	10.12	11.13	362	Georgetown	8.12	12.43	9.25	2.07 5.24	
.....	6.21	8.01	10.10	11.10	362	" Junction..	8.16	9.28	2.09 5.27	
.....	7.54	10.03	11.04	365	Limehouse	8.23	9.35 5.34	
.....	6.09	7.45	9.54	10.56	368	Acton West	8.32	1.03	9.44	2.22 5.42	
.....	5.57	7.30	9.39	10.43	374	Rockwood	8.48	1.15	9.58	2.33 5.57	
.....	6.45	5.43	7.10	9.20	10.23	381	GUELPH	9.15	1.35	10.14	2.48 6.18	
.....	7.02	9.13	10.20	382	Guelph Junction	9.20	10.20 6.23	
.....	6.53	9.04	10.13	380	Moeborough	9.31	*10.33 6.32	
.....	*5.19	6.43	*8.53	10.04	391	Breslau	9.43	10.44 6.42	
.....	6.22	5.10	6.32	8.42	9.55	395	Berlin	10.00	2.05	10.53	3.17 6.56	
.....	3.45	10.10	6.25	8.40	397	Waterloo	A.	M.930	4.50	10.25	6.35 7.15	
.....	7.10	3.35	10.00	6.15	8.33	395	Lve } Berlin.... { Arr	9.40	5.00	10.35	6.45 7.25	
.....	7.00	2.50	A.M.	P.M.	402	Arr }	10.54 7.25	
.....	P.M.	2.20	8.15	402	Doon	11.10 7.40	
.....	2.10	8.10	404	Blair	11.20 7.45	
.....	2.00	8.00	404	Galt	11.40 7.55	
.....	4.54	5.38	8.24	9.39	401	Petersburg	10.25	*2.21	11.10	3.33 7.14	
.....	4.46	5.23	8.14	9.31	405	Raden	10.25	11.13	3.40 7.23	
.....	4.40	5.18	8.05	9.23	407	Hamburg	10.45	2.34	11.23	3.45 7.30	
.....	4.25	4.59	7.45	9.00	414	Shakespeare	11.05	2.49	11.38 7.45	
.....	Stratford Junction.....	
.....	5.35	4.10	4.40	7.20	8.55	421	Lve } STRATFORD.. { Ar	11.25	3.05	11.53	4.10 8.00	
.....	9.00	5.30	3.55	7.10	8.45	9.05	Arr }	A.M.	7.35	3.15	12.05	4.20 8.10	
.....	3.55	7.10	8.45	421	STRATFORD.....	10.05 8.10	
.....	*8.45	7.00	8.35	426	St. Paul's	10.20 8.20	
.....	3.35	6.50	8.25	431	St. Mary's	10.40	4.40 8.30	
.....	*3.15	6.32	*8.08	438	Kelley's Siding.....	11.05	4.54 8.43	
.....	3.00	6.22	8.00	443	Thorndale	11.20	5.05 8.53	
.....	2.30	6.00	7.35	454	LONDON	11.59	5.30 9.15	
8.45	*3.45	P.M.	8.35	8.50	426	St. Paul's	7.57	12.15 8.20	
8.30	3.35	8.25	8.35	431	St. Mary's	8.25	3.33	12.25	4.40 8.30	
8.00	3.16	A.M.	7.42	441	Granton	8.53	*4.00	12.42	4.58 P.M.	
7.45	3.05	7.25	446	Lucan	9.10	4.10	12.53	5.09	
7.34	7.10	450	Lucan Crossing	9.20	5.15	
P.M.	P.M.	A.M.	

GRAND TRUNK RAILWAY, MAIN LINE.

GOING EAST.							STATIONS.	GOING WEST.					
Chicago and Detroit to Toronto and Montreal.								Montreal to Toronto, Detroit and Chicago.					
Mxd.	Exp.	Exp.	Exp.	Pass	Mxd	Mls		Mxd	Mxd.	Pass.	Pass.	Pass	Pass
							A. M.	A. M.	P. M.	P. M.			
7.18	4.33	2.48	6.55	458 ¹ / ₂	Allsa Craig	9.34	4.33	1.08	5.25	
6.52	2.30	6.27	461 ¹ / ₂	Park Hill	9.55	4.50	1.23	5.40	
6.32	2.12	6.00	470	Thedford	10.17	5.10	1.39	5.55	
6.10	1.55	5.30	478	Forest	10.40	5.30	1.55	6.10	
5.40	5.10	484	Aberarder	10.50	
5.30	1.37	4.55	483	Lamachle	11.05	5.48	2.15	6.29	
5.00	4.30	496 ¹ / ₂	Blackwell	11.30	
4.45	3.10	1.10	4.15	501 ¹ / ₂	SARNIA (Pt. Edward)..	11.45	6.15	2.40	6.55	
P. M.	P. M.	A. M.		Port Huron (Ft. Gt.),	A. M.	
3.30	1.16	10.15	6.50		From " for Detroit	11.00	6.55	3.50	7.05	
.....	1.25	7.48		From " " Chicago	P. M.	7.05	7.55	
noon	A. M.								
12.00	11.00	8.00	4.20	561	Detroit ... Arrive	3.00	9.40	6.10	9.10	
.....	A. M.	842	Chicago, via B & O &	P. M.	A. M.	
.....	3.45	8.45	P. M.		W B Ry	9.42	7.30	
.....	6.25	8.15	837	" via C & G T R	6.25	8.10	
P. M.	P. M.	P. M.		Lve.						
							Arrive						

Note [a]—Runs daily, Sunday included and stops at all stations between Belleville and Kingston, Sunday a.m.

Note [b]—Train leaving Chicago at 3.25 p.m., via C. & G. T. Ry on Saturdays remains over Sunday at Toronto, leaving at 8.00 p.m., arriving at Montreal 8.00 a.m. connecting with C. V. R. train for Boston and New York.

[a] Runs daily, Sunday included, Montreal to Toronto.

Note b Saturday night train runs through to Detroit Sunday A.M.

THE NAPANEE PAPER CO'Y., NAPANEE.

MANUFACTURERS OF

Nos. 2 & 3 White, Colored, and Toned PRINTING PAPERS.

NEWS AND COLORED A SPECIALTY.

Owing to our Mills being Centrally Located, and with first-class Shipping Facilities, we can supply both the Eastern and Western Trade with Regular or Odd Sizes and Weights with Quick Despatch. Samples and Prices sent on application.

A FULL LINE OF WEIGHTS AND SIZES KEPT AT OUR WESTERN AGENCY,
112 BAY STREET, TORONTO.

Head Office, - - - Napanee, Ont.

W. F. HALL, Secretary-Treasurer,

GEO. E. CHALLES, AGENT,

112 Bay Street, Toronto.

The Paper on which the Toronto Daily and Evening Globe, Evening Telegram and Morning World printed is supplied by our Mills.

MONTREAL TO BOSTON AND NEW YORK.

MONTREAL TO ST. JOHNS & ROUSE'S POINT.

MONTREAL TO ST. JOHNS & ROUSE'S POINT.		STATIONS.		MONTREAL TO BOSTON AND NEW YORK.	
Pass.	Pa.-d.	Pass.	Pa.-d.	Pass.	Pa.-d.
9.20	A.M.	1140am	A.M.	4.30pm	11.15
10.45	7.00	A.M.	7.00	c 7.00	9.00
	7.49	9.35	9.35	7.00	a.m.
	A.M.	8.30	8.30	8.30	11.35
5.10		2.05		7.50	1.00pm
p.m.	2.00				1.15
9.15	6.20			8.55	1.35
9.01	*6.05			*9.07	11.30
*8.52	5.57			*9.15	11.55pm
*8.39	*5.45			*9.27	12.12
8.25	5.32			9.40	1.00
8.10	5.32			9.40	1.15
*7.44	*5.18			*9.52	1.40
7.35	*5.01			*10.68	2.12
7.16am	4.50			8.20	2.30
	P.M.	8.50		8.35	2.58
	1.30	8.30am	8.30pm	10.40	3.00pm
	5.20am	8.30am	8.30pm	10.35	
	8.30am	8.30pm	8.30pm		

RICHMOND and QUEBEC DISTRICT.

RICHMOND and QUEBEC DISTRICT.		STATIONS.		ATHABASKA & THREE RIVERS BRANCH.	
Exp's.	Mix'd.	Exp's.	Mix.	Mis.	Mix.
8.15	A.M.	8.10	3.15 p.m.	0	a.m.
7.00	4.06	9.33	4.43	4	6.40
5.35	1.50	10.50	6.22	11	6.43
5.20	12.50	11.05	7.00	18	7.07
*4.48	12.18	11.27	7.43	25	7.30
4.30	11.45	11.35	7.57	31	7.42
*4.13	11.23	11.50	8.25	35	7.58
*3.55	10.58	12.05	8.55		8.10
3.43	6.00	12.22	9.27		8.54
3.27	5.38	12.32	9.50		
3.19	5.06	12.47	10.20		
*3.04	A.M.	12.57			
*2.48	9.24	*1.27			
*2.38	9.10	*1.37			
*2.29		*1.45			
2.27		1.47			
2.10		P.M.			
9.20	8.30	2.05			
A.M.	10.15	6.30			
	10.15	5.30			
	6.20	9.10			

Train leaving Point Levi 8.30 p.m. for Montreal and Portland runs through to Montreal Sunday, a.m., and remains over Sunday at Island Pond.
 NOTE a. Runs daily to Pt. Levi, except Monday.

Train leaving Point Levi 8.30 p. m. for Montreal and Portland runs through to Montreal Sunday, a.m., and remains over Sunday at Island 1 only.
NOTE a. Runs daily to Pt. Levi, except Monday.

CATARRH

CATARRHAL DEAFNESS

A NEW HAY FEVER TREATMENT

Sufferers are not generally aware that these diseases are contagious, or that they are due to the presence of living parasites in the lining membrane of the nose and Eustachian tubes. Microscopic research has proved this to be a fact, and the result is that a simple remedy has been formulated whereby these diseases are cured in from one to three simple applications made at home. A descriptive pamphlet is sent free on receipt of stamp by A. H. Dixon & Son, 305 King-street West, Toronto, Canada.

MONTREAL AND CHAMPLAIN JUNCTION DIVISION.

SUBURBAN.		Pass.		SUBURBAN		Miles		STATIONS.		SUBURBAN.		Pass.		SUBURBAN.	
P.M.	A.M.	P.M.	A.M.	A.M.	P.M.	A.M.	P.M.	Arrive	Leave	A.M.	P.M.	A.M.	P.M.	A.M.	P.M.
.....	6.35	0	Moore's Junction
.....	6.10	10.00	3	Province Line
.....	5.58	9.36	10	Hemmingford
.....	5.49	9.20	13	Barrington
.....	5.38	8.58	17	Hughes
.....	5.27	8.37	20	St. Michel
.....	24	St. Remi
.....	7.10	11.00	29	N. Covington
.....	6.38	10.23	37	White's
.....	6.20	9.53	46	Huntington
.....	6.00	9.20	56	Ormstown
.....	5.51	9.07	67	Bryson's
.....	5.41	8.50	79	Howick
.....	5.30	8.30	93	St. Martine
.....	5.19	8.14	109	St. Philomena
.....	5.07	7.55	127	St. Rexp's
.....	4.59	7.11	147	St. Isidore Junction
.....	4.48	6.42	169	St. Constant
.....	4.43	6.37	194	Laprairie
.....	221	Brosseau
.....	7.20	251	Longueuil
.....	7.10	9.20	283	St. Lambert
.....	7.00	9.12	317	Point St. Charles
.....	6.52	9.07	353	St. Henri
.....	6.45	9.00	391	Montreal
.....	431	Leave
.....	473	Arrive

NOTE (a). Saturdays only.

NOTE (b). Saturdays only.

Montreal to Lachine --- LACHINE BRANCH --- Lachine to Montreal.

Pass.	Pass.	Pass.	Pass.	Pass.	Pass.	Pass.	Pass.	Pass.	Pass.	Pass.	Pass.	Pass.	Pass.	Pass.	Pass.
A.M.	A.M.	A.M.	A.M.	A.M.	A.M.	A.M.	A.M.	A.M.	A.M.	A.M.	A.M.	A.M.	A.M.	A.M.	A.M.
.....	7.45	9.00	10
.....	8.03	9.23	12
.....	8.03	9.23	12
.....	7.45	9.00	10
.....	7.15	8.20	8
.....	7.15	8.20	8
.....	7.38	8.43	6
.....	8.03	9.18	3
.....	8.03	9.18	3
.....	8.15	9.25	3

NOTE.—A Special train will be run between Montreal and Lachine on Wednesdays and Saturdays, leaving Montreal at 11 p.m. and returning leave Lachine at 11.30 p.m. Trains for St. Laurent leave Montreal at 7.50 a.m., and 5.15 p.m.; Returning leave St. Laurent at 8.25 a.m. and 5.50 p.m.

THE BARBER & ELLIS COMPANY,

Nos. 15 Jordan and 10, 12 & 14 Melinda Streets,

TORONTO, ONT.

BOOK-BINDERS.

All grades of Account Books in stock and made to order, of the best material and by first-class workmen.

BOX-MAKERS.

All kinds of Paper Boxes made for manufacturers of Hosiery, &c., &c.

ENVELOPE MANUFACTURERS.

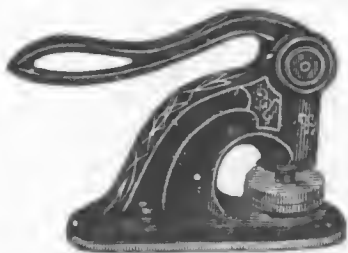
We are the only large makers in the Dominion.

PAPER DEALERS.

All grades of Paper in stock. Printers' supplies in great variety. Bookbinders' stock of all descriptions.

CORRESPONDENCE SOLICITED.

BARBER & ELLIS COMPANY, Toronto, Ontario.



Keystone STAMP Works.

FOR

Rubber and Metal Stamps, Seals, Burning
Brands, Stencils, etc.,

Call at the Keystone Stamp Works, 4 King Street East,
TORONTO.

Send Postal for Illustrated Catalogue—Free
to any address.

JOHN YOUNG, THE LEADING UNDERTAKER

and Embalmer,

347 YONGE STREET, TORONTO.

TELEPHONE 679.

GEORGIAN BAY AND LAKE ERIE DIVISION.

		Express.	Express	Mixed.	Mls	STATIONS.		Exp.	Exp.	Mix.
			7.15 pm	1.45 pm	6	Arrive.	Leave.	A.M.	P.M.	P.M.
						PORT DOVER.....		7.45		2.15
			8.50 "	8.55 pm	62.4	Lve. } STRATFORD.....	9.00 am { Arr	11.40		7.10
6.30	10.00 am	3.35 "			76.4	Stratford Junction.....	9.05 "	12.13	7.10	
6.20	9.52 "	3.28 "			78.9	Milverton.....	10.20 "	12.45	7.52	
5.25	9.20 "	2.57 "			78.9	Millbank.....	10.40 "	12.53	8.00	
5.05	9.10 "	2.47 "			89.0	LISTOWAY.....	12.10 pm.....	1.20	8.25	A.M.
4.15	8.38 "	2.17 "			98.4	PALMERSTON.....	12.40 "	2.05	8.55	5.50
3.25	3.15 "	1.55 "	8.50 "			PALMERSTON.....		2.10	9.00	
Mixed	8.05 "	12.50 "	7.50 pm		11	Mount Forest.....		2.40	9.25	
	7.40 "	12.20 "	7.10 "		17	Holstein.....		3.00	9.40	
	7.25 "	12.00 "	6.30 "		22.5	Varney.....		3.15	*9.55	
	*7.10 "	11.40 "	6.30 "		26.5	DURHAM.....		3.25	10.05	
	7.00 "	11.30 "	6.15 "		103.5	Harriston.....		2.20	9.13	6.20
	7.33 "	1.05 "	8.35 "		113.6	Ayton.....		2.52	9.40	7.25
	7.12 "	12.25 "	7.35 "		117.4	New-tadt.....		3.05	9.50	7.45
	7.03 "	12 10 pm.	7.00 "		123.7	Hanover.....		3.23	10.05	8.50
	6.48 "	11.45 "	6.35 "		130.0	Eimwood.....		3.40	10.20	8.45
	6.33 "	11.23 "	6.00 "		134.4	CHESLEY.....		3.55	10.32	9.30
	6.24 "	11.18 "	5.35 "		147.2	Tara.....		4.30	11.02	10.25
	5.55 "	10.25 "	4.30 "		152.4	Allenford.....		4.45	11.16	10.55
	5.41 "	10.07 "	3.50 "		159.3	Hepworth.....		5.08	11.35	11.50
	5.24 "	9.12 "	3.10 "		166.5	Lv. WIARTON.....	Arr.	5.30	11.55	12.15
	5.05 am	9.15 am	2.15 pm							

BUFFALO AND GODERICH.

BUFFALO TO GODERICH AND DETROIT.				Miles.	STATIONS.	DETROIT & GODERICH TO BUFFALO.			
Exp.	Exp's	Mix'd.	Mix'd.			Pass.	Exp.	Exp's	Mix.
A.M.		P.M.				P.M.	P.M.	P.M.	
7.30		4.30		.00	Lv.....	1.10	8.45		
7.45		4.45		4.00	Lv.....	12.55	8.30		
8.00		5.00		6.02		12.40	8.15		
8.15		5.20		14.12		12.22	8.01		
8.35		5.40		23.93		12.03	7.45		
*8.45		*5.55		30.53		*11.50	*7.30		
*8.51		*3.02				11.41	*7.20		
*8.56		*6.08		37.02		*11.36	*7.15		
9.06		6.20		42.83		11.25	7.02		
9.17		6.35		50.29		11.10	6.45		
9.20		6.40		51.08		11 05	6.40		
		*6.52		55.90		*10.58			
		6.55		56.04		10.51			
9.42		7.08		63.58		10.43	6.15		
9.57		7.27		72.51		10.29	5.58		
		7.37		76.97		10.22			
10.12		7.45	P.M.	80.43	Arr } Brantford.....	10.12	5.43		P.M.
10.12		7.45	1.30		Dep } { Arr.	10.12	5.33		1.15
10.40		8.03	3.00	88.23		9.51	5.21		12.55
10.55		8.22	3.40	96.71		9.36	5.03		10.00
11.03		8.35	4.51	102.98		9.25	4.51		9.35
11.30		8.55	5.20	111.98		9.04	4.29		8.25
11.50		9.15	5.45		Ar } Tavitock.....	8.45	4.10		8.00
P.M.	P.M.		A.M.	119.65	Lv } STRATFORD.....				A.M.
12.15	8.05		5.50		Ar }	8.40	3.30	6.55	
12.30	8.17		6.10	124.68		8.28	3.10	6.37	
1.00	8.35		7.25	132.72		8.10	2.50	6.10	
1.21	8.49		8.00	134.70		8.00	2.30	5.35	
1.48	9.02		9.15	144.26		7.40	1.48	5.05	
2.20	9.20		10.18	152.38		7.30	1.15	4.15	
*2.30	*9.30		*10.28	156.25			*12.54	*3.35	
3.00	9.50		10.55	165.30	Ar.....	7.00	12.30	3.15	
P.M.						A.M	P.M.	P.M.	

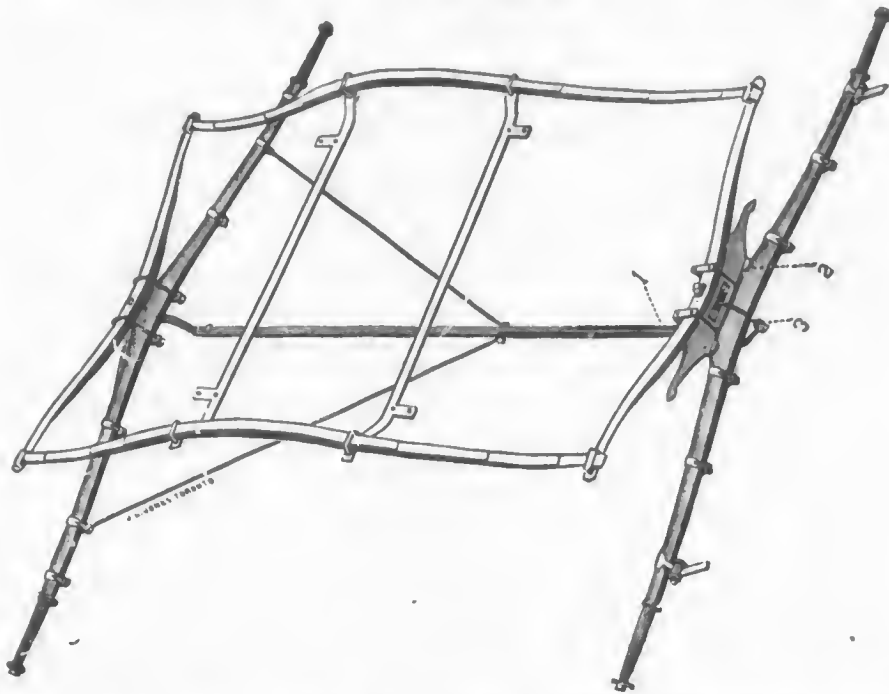
Pullman Sleeping Car from New York to Chicago on express trains daily Sunday included.

Pullman Sleeping Car through to New York by trains leaving Chicago at 8.15 and 3.25 p.m. daily.

TO CARRIAGE BUILDERS.

You will find it to your advantage to use the

M^cLAUGHLIN Patent Buggy Gears.



For 1887 they have several improvements, placing them now for **EASE OF MOTION, QUIET RUNNING** and **DURABILITY, WITHOUT A RIVAL**

ASK FOR CIRCULARS AND PRICES.

FACTORY AND OFFICES IN OSHAWA, ONT.

R. McLAUGHLIN,

Oshawa, March, 1887.

Patentee and Manufacture

London, Huron, & Bruce Branch.

GOING NORTH.				GOING SOUTH.				
Exp.	Mail.	Mls.	STATIONS.	Express	Mail.			
11.20 am	7.40 pm		Arrive..... WINGHAM.....	Depart	7.00 am	3.05 pm		
11.15 "	7.35 "	1Wingham Junction.....		7.03 "	3.15 "		
11.00 "	7.20 "	63Belgrave.....		7.17 "	3.28 "		
10.46 "	7.05 "	133Blyth.....		7.31 "	3.42 "		
10.37 "	6.55 "	174Londonborough.....		7.40 "	3.51 "		
10.18 "	6.35 "	24Clinton.....		8.00 "	4.10 "		
9.59 "	6.15 "	80Worcefield.....		8.19 "	4.29 "		
9.51 "	6.05 "	344Klppen.....		8.27 "	4.37 "		
9.46 "	5.58 "	37Hensall.....		8.33 "	4.43 "		
9.35 "	5.45 "	423Exeter.....		8.47 "	4.57 "		
9.28 "	5.33 "	474Centralia.....		8.57 "	5.07 "		
9.10 "	5.20 "	534Clandeboye.....		9.10 "	5.20 "		
9.00 "	5.15 "	Lucan Crossing.....		9.20 "	5.25 "		
8.52 "	5.05 "	584Denfield.....		9.30 "	5.31 "		
8.40 "	4.53 "	624Ilderton.....		9.43 "	5.39 "		
8.30 "	4.44 "	664Ettrick.....		9.51 "	5.46 "		
8.20 "	4.35 "	694Hyde Park Junction.....		10.00 "	5.52 "		
8.10 am	4.25 pm	74	Leave..... LONDON.....	Arrive	10.10 "	6.00 "		

TORONTO SUBURBAN SERVICE.

						STATIONS.									
P.M.	P.M.	P.M.	A.M.	A.M.	Mls.	Arr.....	YORK.....	Dep.	A.M.	A.M.	P.M.	P.M.	P.M.		
6.40	4.15	2.32	10.52	8.30	0	GREENWOOD AVE.....	6.30	8.45	12.30	3.05	4.30			
6.33	4.08	2.25	10.45	8.23		KINGSTON ROAD.....	6.35	8.50	12.35	3.10	4.35			
6.25	4.00	2.17	10.37	8.15	2.11	DON.....	6.42	8.57	12.42	3.17	4.42			
6.22	3.57	2.14	10.34	8.12	3.75	BERKELEY STREET.....	6.45	9.00	12.45	3.22	4.45			
6.19	3.54	2.11	10.31	8.09	3.84	CHURCH STREET.....	9.03	12.48	3.25	4.48			
6.12	3.47	2.04	10.24	8.02	4.38	YONGE STREET.....	9.10	12.55	3.32	4.55			
6.10	3.45	2.02	10.22	8.00	4.95	TORONTO, (Union Station).....	9.12	12.57	3.34	4.57			
6.07	3.42	1.59	10.19	7.57	5.33	QUEEN'S WHARF.....	7.0	9.18	1.10	3.36	5.05			
6.03	1.56	10.15	7.53	6.58	STRACHAN AVE.....	7.04	9.22	1.14	5.09			
6.01	1.53	10.13	7.51	6.94	NORTH PARKDALE.....	7.06	9.24	1.16	5.11			
5.58	1.50	10.10	7.48	7.64	BLOOR STREET.....	7.08	9.27	1.19	5.14			
5.53	1.45	10.05	7.43	9.19	CARLTON.....	9.32	1.24	5.19			
5.48	1.40	10.00	7.38	10.45	WESTON.....	7.17	9.37	1.25	5.24			
5.40	7.30	13.74	Dep.....	7.25	5.32			
									A.M.	A.M.	P.M.	P.M.	P.M.		

GUELPH BUSINESS COLLEGE,

GUELPH, CANADA.

TWELVE STATES AND PROVINCES are already represented on the roll of this Institution, now in its third year. To the thorough instruction given and the consequent success of its graduates this College owes its popularity. The staff includes four teachers and two lecturers. There are no vacations. For circular giving terms and general information, address :

M. MACCORMICK, Principal.

GRANCLITHIC.

The Pavement of to-day and the future. Railway Platforms, Steps and Landings, Stable and Coach House Floors, Street Sidewalks, Creamery Floors, &c., &c.

R. FORSYTH, Montreal,
Sole Agent for the Dominion.

Wellington, Grey, & Bruce Division.

Mixed	Pass.	Mixed.	Pass.	Mls.	STATIONS.	Pass.	Pass.	Mixed.
A.M.	p.m.	p.m.	p.m.			a.m.	p.m.	p.m.
11.20	8.35	5.45		Arrive..... London..... Depart	6.00	2.20	4.30
8.55	6.30	5.25	12.12		Arrive..... Hamilton..... Depart	9.20	3.10	5.30
8.05	5.52	3.45	11.35	128	Arrive..... HARRISBURG..... Depart	10.15	4.40	6.35
7.48	5.34	3.30	11.21	122 Branchton	10.29	4.56	6.55
7.32	5.17	3.15	11.08	116 Galt	10.44	5.17	7.20
7.15	5.02	3.03	10.53	110 Preston	10.58	5.29	7.34
7.05	4.52	2.55	10.52	109 Heepeler	11.06	5.37	7.44
6.20	4.15	2.25	10.29		Depart..... } GUELPH { Arrive	11.38	6.03	8.25
.....	4.15	2.2	10.08	101	Arrive..... } Depart	11.24	6.20	p.m.
Acc.	3.20	1.20	9.30	88 Elora	12.15	6.57
.....	3.12	1.10	9.24	85	Dep..... } FERGUS { Arr.	12.25	7.04
.....	3.12	p.m.	79	Arr..... } Lve.	7.04
.....	2.54	6.08	73 Alma	12.40	7.18
.....	2.33	8.54	70 Goldstone	12.54	7.32
.....	2.28	8.46	66 Drayton	1.03	7.40
.....	2.15	8.35	59 Moorefield	1.2	7.50
P.M.	1.55	8.20		Dep. } PALMERSTON..... { Arr.	1.30	8.05	a.m.
7.20	1.00	A.M.	8.00	53	Arr. } { Dep.	1.50	8.20	8.30
7.00	12.45	7.46	40 Harriston	2.05	9.15	9.15
6.00	12.20	7.31	38 Clifford	2.20	9.30	9.50
5.05	11.60	7.11	32 Mildmay	2.41	9.50	10.35
4.30	11.30	6.58	27 Walkerton	2.55	10.05	11.40
3.45	11.05	6.45	24 Dunkeld	3.05	12.00
3.30	10.55	6.30	23 Carleton	3.11	10.20	12.20
3.14	10.51	6.35	17 Plinkerton	3.14	10.23	12.30
2.30	10.35	6.21	9 Paisley	3.35	10.58	12.50
.....	10.05	*6.05	4 Turners	4.00
.....	9.50	5.53	 Port Elgin	4.25	11.10
.....	9.30	5.45		Dep't..... SOUTHAMPTON..... Arr.	4.40	11.20
p.m.	a.m.		a.m.			p.m.	p.m.	p.m.

Kincardine and Palmerston.

Mls.	STATIONS.	Going north.				STATIONS.	Going South.			
		*Mix.	Acc.	Exp.	Exp.		*Mix	Acc.	Mail	Exp.
0	Palmerston	A.M.	P.M.	P.M.		P.M.	A.M.	A.M.		
5	Gowanstown	6.20	1.45	8.20	Kincardine	4.30	9.40	5.40		
9	Listowel	6.40	1.57	8.35	Ripley	5.05	10.05	5.56		
14	Attwood	7.45	2.05	8.43	Lucknow	6.00	10.30	6.13		
18	Henfryn	8.07	2.18	8.58	Whitechurch	6.30	10.48	6.27		
21	Ethel	8.22	2.27	9.10	Wingham	7.25	11.10	6.39		
27	Brussels	8.40	2.35	9.20	Wingham Junct.	7.35	11.15		
34	Rive Vale	9.30	2.50	9.35	Buevale	7.50	11.25	6.48		
37	Wingham Junct.	10.00	3.05	9.51	Brussels	8.45	11.45	7.02		
39	Wingham	10.10	3.15	Ethel	9.20	12.00	7.14		
43	Whitechurch	11.25	3.20	10.02	Henfryn	9.32	12.10	7.21		
50	Lucknow	11.50	3.32	10.15	Attwood	9.50	12.24	7.30		
58	Ripley	12.40	3.48	10.31	Listowel	10.30	12.44	7.45		
66	Kincardine	1.50	4.07	10.50	Gowanstown	12.53	7.52		
		1.45	4.25	11.10	Palmerston	11.00	1.10	8.05	A.M.	
		P.M.	P.M.	P.M.		P.M.	P.M.			

W. H. STONE,
UNDERTAKER,
 HAS REMOVED TO
YONGE 349 STREET

Opposite Elm street.

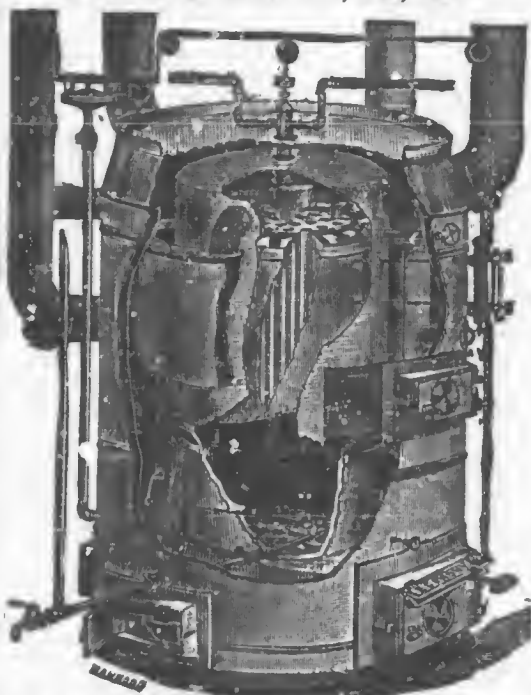
Telephone 932.

ECONOMY FURNACE.

Powerful, Economical, Cheap.

Economy Steam & Warm Air Combination

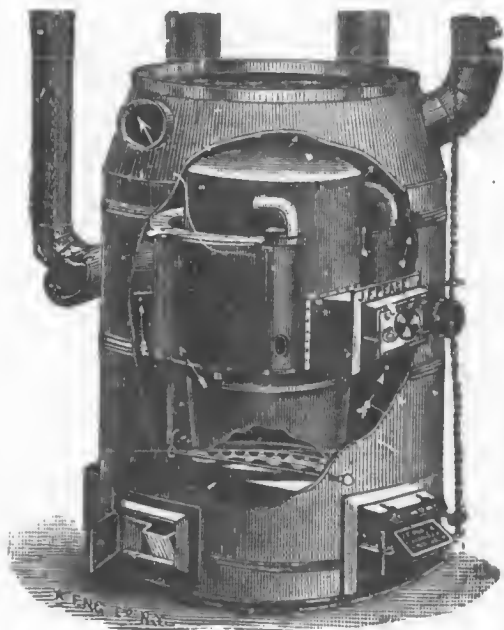
3 SIZES Nos. 10, 14, 18.



This shows our Combination Heater with parts cut away to show internal construction.

ECONOMY WROUGHT-STEEL Warm Air Furnace.

5 SIZES, Nos. 4, 8, 10, 14, 18.



This shows our Economy Warm Air Furnace which we guarantee free from dust, ashes, or gas.

THE MOST PERFECT HEATER IN THE WORLD

For Dwellings, Churches, Schools, Stores, Banks or Public Buildings. Estimates furnished. Discount to the trade. An elegant line of Tuttle & Bailey Registers at wholesale prices. Awarded a Silver Medal, the only premium given on Warm Air Furnaces at the Toronto Industrial Exhibition of 1885.

J. F. PEASE FURNACE CO.,

SOLE MANUFACTURERS,

151, 153, 155 QUEEN STREET EAST, - TORONTO, ONT.
and Syracuse, N. Y.

The Modern Turkish, or Roman Bath, AND HOME OF HEALTH,

140 St. Monique Street, foot of McGill College Avenue,
MONTREAL.

The largest, most complete, luxurious, and best constructed Baths on this continent,

Public Bathing Hours: Gentlemen, 6 to 8 A.M.; 2 to 9 P.M. Ladies, 10 to 12, noon.

The Institute includes a "Sanitarium," with superior accommodation for resident patients as well as others, who will find a quiet, comfortable and desirable home, where a liberal healthful dietary abounds. Special attention devoted to Chronic Diseases. Terms and all information will be furnished on application.

D. B. A. MACBEAN, M.D., Proprietor.

MIDLAND DIVISION.

MAIN LINE.

Between Toronto and Uxbridge, Orillia and Midland.

Mlx.	Mix.	Exp.	Mail	Mls.	STATIONS.		Mail	Ex.	*Mx.	Mix.
P.M.	A.M.	P.M.	A.M.		Lve.	Arr.	P.M.	P.M.	P.M.	A.M.
3.15	9.15	4.35	7.35	0	TORONTO.....	12.15	9.21	5.05	9.45
4.15	10.10	5.12	8.15	9	Scarboro Junction.....	11.48	8.43	4.15	9.10
4.37	10.30	5.24	8.27	14	Agincourt.....	11.35	8.30	3.55	8.57
5.03	10.55	5.40	8.43	19½	Unionville.....	11.23	8.18	3.25	8.43
5.13	11.16	5.47	8.50	22½	Markham.....	11.16	8.11	3.15	8.35
5.40	11.45	6.04	9.08	28½	Stouffville.....	11.02	7.57	2.50	8.20
.....	12.10	6.18	9.23	34½	Goodwood.....	10.47	7.42	2.20
.....	12.45	6.35	9.40	41	UXBRIDGE.....	10.30	7.25	1.40
.....	1.15	7.00	10.05	50½	Arr.	Blackwater.	Arr.	10.05	7.00	1.15
.....	P.M.	7.10	10.15	53	Lve.	Sunderland.....	Lve.	9.40	6.35	P.M.
.....	7.20	10.23	58	Cannington.....	9.30	5.25
.....	7.35	10.33	58½	Lorneville Jc.	Lve.	9.00	5.55
.....	7.50	10.50	64½	Arr.	Beaverton.....	Arr.	8.55	5.50
.....	7.55	10.55	64	Lve.	Brechin.....	Lve.	8.39	5.35
.....	8.10	11.10	2	Uptergrove.....	8.22	5.18
.....	8.27	11.27	80	ORILLIA.....	8.05	5.02
.....	8.44	11.44	87½	Coldwater.....	7.50	4.48
.....	9.00	12.00	92½	WAUBAUSHENE.....	7.08	4.02
.....	9.44	12.41	107	MIDLAND.....	6.57	3.50
.....	9.59	12.55	111	6.20	3.15
.....	10.35	1.30	124½	Arr.	Arr.	A.M.	P.M.

Haliburton Division.

Mlx.	Mix.	Exp.	Mail	Mls.	STATIONS.		Mail	Ex.	*Mx.	Mix.
P.M.	A.M.	P.M.	A.M.		Lve.	Arr.	P.M.	P.M.	P.M.	A.M.
3.00	10.30	0	Lindsay.....
3.56	9.45	10½	Half's.....
4.20	9.30	13½	Fenelon Falls.....
5.35	7.45	38	Kinnocant.....
6.27	6.56	46	Ingoldsby.....
7.00	6.30	54½	Arr.	Haliburton.....	Arr.

Between Toronto and Lindsay, Peterboro' and Port Hope.

Mlx.	Exp.	Mail	Mls.	STATIONS.		Exp.	Ml.	Mix.	
A.M.	P.M.	A.M.		Lve.	Arr.	P.M.	P.M.	P.M.	
9.15	4.35	7.35	0	TORONTO.....	12.15	9.20	5.05	
10.30	5.24	8.27	14	Agincourt.....	11.35	8.30	3.55	
10.55	5.40	8.43	19½	Unionville.....	11.23	8.18	3.25	
11.16	5.47	8.50	22½	Markham.....	11.16	8.11	3.15	
11.45	6.04	9.08	28½	Stouffville.....	11.02	7.57	2.50	
12.10	6.18	9.23	34½	Goodwood.....	10.47	7.42	2.20	
12.45	6.35	9.40	41	Uxbridge.....	10.30	7.25	1.40	
1.15	7.00	10.05	50½	Arr.	Blackwater	Lve.	10.05	7.00	1.15
1.25	7.10	10.15	53	Lve.	Mariposa.....	Arr.	9.55	6.50	1.05
2.05	7.36	10.41	61½	Lindsay.....	9.30	6.25	12.25
2.40	7.55	11.00	68½	Arr.	LINDSAY.....	Lve.	9.15	6.10	12.00
3.15	8.15	11.20	77½	Lve.	Omeme.....	Arr.	8.53	5.48	11.20
4.00	8.50	11.55	91½	PETERBOROUGH.....	8.20	5.15	10.25
.....	9.20	12.30	104½	Millbrook.....	7.47	4.40	A.M.
.....	9.41	12.50	113	Garden Hill.....	7.22	4.15
.....	10.05	1.20	122	Port Hope Junction.....	7.00	3.45
.....	P.M.	P.M.		Arr.	Lve.	A.M.	P.M.

Mixed train from Toronto, 3.15 p.m., arrives at Stouffville at 5.40 p.m.
 Mixed train leaves Stouffville 8.00 a.m. arrives Toronto at 10.15 a.m.

Whitby Division.

Mlx.	Exp.	Mail	Mls.	STATIONS.		Exp.	Ml.	Mix.	
P.M.	A.M.	P.M.	A.M.	Lve.	Arr.	P.M.	P.M.	P.M.	
7.00	7.15	7.25	1½	Whitby Junction.....	12.35	9.00	8.17	
7.10	4.05	7.25	7	Whitby.....	12.30	8.50	8.05	
7.21	4.25	7.45	7	Brooklin.....	12.15	8.39	7.45	
8.05	5.30	8.45	19	Ar.	Port Perry.....	Lv.	11.25	8.05	7.00
.....	5.40	9.08	26½	Lv.	Seagrave.....	Ar.	10.52	7.45	A.M.
.....	6.03	9.27	32	Manilla.....	10.35	7.28
.....	6.25	9.30	32½	Ar.	Manilla Jc.....	Lv.	10.30	6.35
.....	7.25	10.30	37	Lv.	Mariposa.....	Ar.	9.40	6.25
.....	7.36	10.41	44	Lindsay.....	9.15	6.10
.....	7.52	10.57	44	9.15	6.10
.....	P.M.	A.M.		Arr.	Lve.	A.M.

THE GLOBE,

The Leading Paper of Canada.

Daily Globe, Morning Edition	\$5.00 per year.
“ “ 12 o’Clock “	3.00 “ “
“ “ 3 “ “	3.00 “ “

MIDLAND DIVISION.—Continued.

MAIN LINE.

Between Port Hope and Peterboro', Orillia and Midland.

Mxd.	Mxd.	Exp.	Mall.	Mls.	STATIONS.					Mxd.
A.M.	A.M.	P.M.	A.M.		Lv.	Ar.	P.M.	P.M.	A.M.	P.M.
.....	10 45	3.45	7.00		Port Hope Junc.		1.29	10.05	9.20
.....	12.30	4.40	7.47	18	Millbrook		12.30	9.20	8.00
.....	1.00	24½	Bethany		7.13
.....	1.10	26½	Brunswick		7.03
.....	1.20	28	Franklin		6.55
10.25	5.15	8.20	31	PETERBOROUGH		11.55	8.50	4.00
11.20	1.50	5.48	8.53	45	Onemee		11.20	8.15	6.27	3.15
12.00	2.15	6.10	9.15	54	LINDSAY		11.00	7.55	6.00	2.40
12.25	P.M.	6.25	9.30	61	Mariposa		10.41	7.38	A.M.	2.05
1.05	6.50	9.55	72	Ar. Blackwater	Lv.	10.15	7.10	1.25
.....	7.10	10.15	74	Lv. Sunderland	Ar.	9.40	6.35	P.M.
.....	7.20	10.27	74½ Cannington	9.15	6.10
.....	7.35	10.36	80	9.30	6.25
.....	7.50	10.50	86½	Ar. Lorneville Jc	Lv	9.00	5.55
.....	7.55	10.55	86½	Lv Lorneville Jc	Ar	8.55	5.50
.....	8.10	11.10	99½	Beaverton		8.39	5.35
.....	8.27	11.27	101½	Brechin		8.22	5.13
.....	8.44	11.44	108½	Uptergrove		8.05	5.02
.....	9.00	12.00	113½	ORILLIA		7.50	4.48
.....	9.44	12.41	128½	Coldwater		7.08	4.02
.....	9.59	12.55	133	WAUBAUSHENE		6.57	3.50
.....	10.35	1.30	146	MIDLAND		6.20	3.15
.....	P.M.	P.M.		Arr.	Lve.	A.M.	P.M.

BRANCH LINE.
Belleville Division.

Mix.	Mix.	Mix.	Mix.
P.M.	P.M.	P.M.	P.M.
1.45	7.50	10.20	7.00
2.31	8.26	9.26	7.00
3.07	9.00	9.00	6.20
3.38	9.38	8.32	6.45
4.02	10.08	8.10	5.17
4.22	10.30	7.55	4.58
4.40	10.50	7.40	4.40
5.15	11.30	7.00	4.00

BRANCH LINES.

Lakefield Branch.

Mix.	Mail	Mail.	Mls.	STATIONS.		Mail	Mix.	Mix.
.....	P.M.	A.M.		Lve.	Ar.	A.M.	P.M.	P.M.
.....	7.13	10.30	0	Lakefield		9.45	6.55
.....	7.55	10.45		Ar.	Lv	8.55	6.15
.....	11½	PETERBORO'		A.M.	P.M.
.....	8.50	7.35		Lv.	Ar	8.50
.....	9.05	7.25	19	Fraserville		8.30
.....	9.20	8.00	24½	Millbrook		8.15
.....	10.05	9.20	42½	Port Hope Junc		7.00
.....	P.M.	A.M.		Arr.	Lve.	A.M.		

Lindsay and Coboconk.

Mail.	Mls.	STATIONS.		Mail.
P.M.		Lve.	Ar.	A.M.
6.20	0	Lindsay		9.55
6.45	6	Cambray		9.26
7.10	15½	Ar. Lorneville Junc.	Dp	9.00
8.00	24½	Dp.	Ar	8.40
8.40	26½	Portage Road		7.55
8.50	26½	Kirkfield		7.45
9.10	29	Victoria Road		7.25
9.55	37½	Coboconk		6.40
P.M.		Arr.	Lve.	A.M.

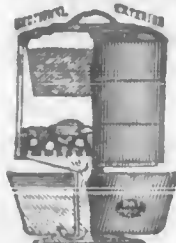
Madoc Branch.

Mix.	Mix.	Mls.	STATIONS.		Mix.	Mix.
A.M.	P.M.		Lve.	Ar.	P.M.	P.M.
6.55	3.35	0	MADOC		1.20	5.35
7.33	4.19	13	W. Huntington		12.41	4.51
7.38	4.25	15	North Hastings Junc.		12.36	4.45
8.20	27½	Ar. BELLEVILLE	Lve.	11.50
.....			A.M.

Sutton Branch.

Mail.	Mls.	STATIONS.		Mail.
A.M.		Lve.	Ar.	P.M.
6.39	0	Sutton		7.55
7.15	12½	Mt. Albert		7.10
7.35	16½	Vivian		6.50
7.48	19	Ballantrac		6.37
8.10	25	Arr. Stouffville	Lve.	6.10

THE ARNOLD Automatic STEAM COOKER



Is fast becoming a household necessity to all who study economy and value the health and happiness of those committed to their care. It cures and prevents disease, and saves food, fuel, and labor. No house is complete without one. Send for circular.

It will pay any active and intelligent man or woman who wants to secure a paying business to apply at once for our confidential terms to Agents.

Address RICHARDS BROS., 494 & 496 YONGE STREET, TORONTO.

WM. POLSON & CO.,

TORONTO.

Manufacturers of

ENGINES & BOILERS.

Steam Yacht and Tug Machinery a Specialty.

Upright Engines and Boilers from 2 to 20 H.P.

We carry a large stock of new and second-hand Engines, Boilers, and General Machinery.

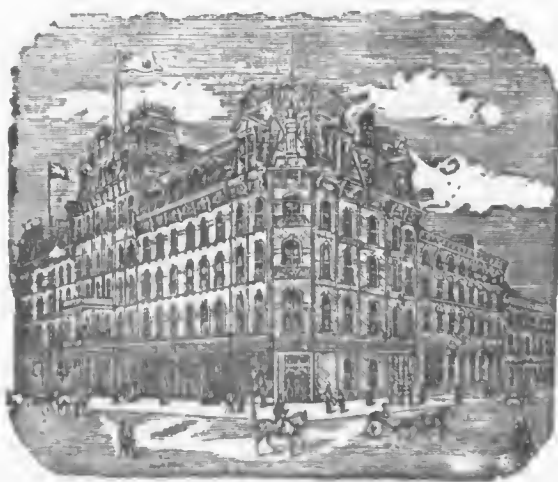
LOWEST PRICES AND SATISFACTION GUARANTEED.

OFFICE AND WORKS:

Esplanade East, Foot of Sherbourne St., Toronto, Ont.

THE RUSSELL,

OTTAWA.



KENLY & St. JACQUES,

Proprietors.

SOUTHERN DIVISION.

MAIN LINE, GOING WEST.

Dist. from Niagara F.	STATIONS.	Chicago Express (Sund'ys incl'ded)	Accom.	Accom.	St. Louis Express (Sund'ys incl'ded)	Pacific Express (Sund'ys incl'ded)	Mail.	Accom.	Mix.
	NEW YORK (West Shore) Dep.	9.55 am			6.05 pm	8.15 pm			
	NEW YORK, N. Y. C. *	10.30 "			6.30 "	9.15 "			
	NEW YORK, N. Y. L. E. & W. "	*9.00 "			6.00 "	8.00 "			
	BOSTON, B. H. T. & W. "	8.30 "			3.00 "	7.00 "			
	ALBANY	*3.00 pm			10.40 "	2.15 am			
	ROCHESTER	10.00 "			4.40 am	10.10 am			
	BUFFALO, N. Y. L. E. & W. c	10.50 pm			6.30 "	12.15 pm	2.00 pm	8.15 am	5.05
	BUFFALO, N. Y. C. & W. S. "	11.50 "			4.45 "	12.10 pm	2.20 "		4.55
	SUS. BRIDGE (N. Y. C.) "	12.50 am		6.50 am	7.45 "	1.15 pm	3.35 "	9.20 "	6.15
	NIAGARA FALLS	1.15 "		7.05 "	8.05 "	1.35 "	3.50 "	9.30 "	7.50
9 1/2	Merrittton	1.31 "		7.27 "	8.05 "	1.52 "	4.12 "	9.50 "	8.00
11 1/2	St. Catharines	1.35 "		7.33 "	8.29 "	1.58 "	4.16 "		8.32
17 1/2	Jordan			7.45 "			4.27 "		
23	Beamsville			7.58 "			4.39 "		
27 1/2	Grimsby			8.10 "			4.44 "		
32	Winona			8.21 "			4.59 "		
43 1/2	HAMILTON	{ Arr. 2.30 "		8.45 "	9.20 "	2.55 "	5.20 "		10.10
		{ Dep. 2.35 "		9.15 "	9.25 "	3.05 "	5.30 "	3.50 pm	
49 1/2	Dundas			9.29 "			5.45 "	4.05 "	
55	Copetown			9.40 "			5.58 "	4.17 "	
59 1/2	Lynden			9.48 "			6.08 "	4.27 "	
62 1/2	HARRISBURG	{ Arr. 3.15 "		9.55 "		3.45 "	6.15 "	4.35 "	
		{ Dep. 3.19 "		10.15 "	10.05 "	3.49 "	6.20 "		
64 1/2	St. George			10.20 "			6.25 "		
72 1/2	Paris	3.39 "		10.40 "	10.21 "	4.12 "	6.41 "		
79 1/2	Princeton			10.57 "			6.55 "		
81 1/2	Gobles			11.02 "			7.00 "		
86 1/2	Eastwood			11.14 "			7.10 "		
91	Woodstock	4.18 "		11.27 "	10.52 "	4.45 "	7.22 "		
95 1/2	Beachville			11.36 "			7.35 "		
100	Ingersoll	4.34 "		11.45 "	11.05 "	5.03 "	7.47 "		
109	Dorchester			12.09 pm			8.10 "	Windsor	
118 1/2	London Est.		Acc.	12.25 "			8.30 "	Accom.	
119 1/2	LONDON	{ Arr. 5.10 "		A.M. 12.30 "	11.40 "	5.45 "	8.35 pm	Mixed.	
		{ Dep. 5.30 "		6.45 2.15 "	11.45 "	6.20 "		6.30 pm	
129 1/2	Komoka			7.20 2.35 "				6.59 "	
134	Mount Brydges			7.40 2.44 "				7.10 "	
140	Lengwood			8.02 2.58 "				7.28 "	
145	Appin			8.21 3.09 "				7.42 "	
149	Glencoe	6.20 "		9.00 3.17 "				7.55 "	
156	Newbury	6.32 "		9.30 3.30 "				8.12 "	
161 1/2	Bothwell	6.41 "		10.25 3.43 "				8.27 "	
168	Thamesville	6.54 "		11.05 4.01 "				8.50 "	
174 1/2	Lewisville			11.25 4.15 "				9.08 "	
183 1/2	CHATHAM	{ Arr. 7.20 "		12.00 4.40 "	1.20 pm			9.35 pm	
		{ Dep. 7.35 "		1.40 4.45 "	1.30 "				
197 1/2	Jeannette's Creek			2.28 5.14 "			6.50 am		
203 1/2	Stony Point			2.46 5.25 "			7.20 "		
212 1/2	Belle River			3.14 5.44 "			7.34 "		
221 1/2	Pecumseh			3.47 6.00 "			7.52 "		
229 1/2	WINDSOR	Arr. 8.45 "		4.20 6.15 "	2.30 "	9.20 "	8.13 "		
	DETROIT (D. G. H. & M. Depot) "	8.20 "	P.M.	5.50 "	2.05 "	8.55 "	8.30 "		
	CHICAGO, Wab. & B. & O. R. "				9.42 "	7.30 am			
	CHICAGO, via. C. & G. T. "	6.25 pm				8.10 "			
	MILWAUKEE, D., G., H. & M. "	6.00 am	6.00						
	ST. LOUIS	Arr.	A.M.		7.45 am	7.30 pm			

* Except Sunday.

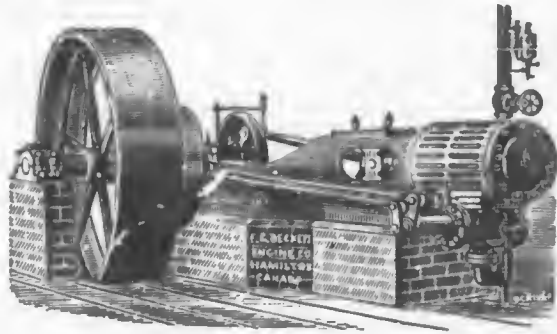
c On Sundays leaves at 10.15 p.m.

USE ATKINSON'S
FARISIAN TOOTH PASTE

For Cleaning the Teeth.

F. G. BECKETT ENGINE COMP'Y,

MANUFACTURERS OF



AUTOMATIC CUT OFF ENGINES

Stationary, Marine and Portable Engines

and Boilers, Mining Machinery

for Gold Silver and Copper,



FLOUR MILL AND SAW MILL MACHINERY, SHAFTING,

Pulleys, Patent Couplings, Self Oiling Hangers, Etc.

HAMILTON, ONT.

SOUTHERN DIVISION.

MAIN LINE, GOING EAST.

Dist. from Windsor.	STATIONS.	Limited Express (Sund'ys incl'd)	Mail.	Atlantic Express (Sund'ys incl'd)	Mixed.	Mixed.	Day Express	St. Louis Express Sundays incl'd.	Mix.
	ST. LOUIS	7.05 am							
	CHICAGO (via C. & G. T.)... Dep.	3.25 pm		8 15 pm				7.28 pm	
	CHICAGO B. & O. & Wab.... "	3.45 pm		8.45 "					
	MILWAUKEE	11.45 "							
	DETROIT D. G.H. & M. Depot) "	12.00 nt.		6.25 am	noon.	5.50 pm		12.05 "	
	WINDSOR	1.40 am		8.00 "	12.00	7.30 "	7.00 am	1.40 "	
7	Pecunseh				12.23 "	7.50 "	7.14 "		
17	Belle River				12.51 pm	8.15 "	7.30 "		
26	Stony Point				1.21 "	8.40 "	7.47 "		
32	Jeanette's Creek				1.40 "	8.55 "	8.00 "		
45	CHATHAM	{ Arr. 2.45 "		9.05 "	2.15 "	9.30 "	8.25 "	2.40 "	
	Vosburg	{ Dep. 2.50 "		9.10 "	3.00 "	9.40 "	8.30 "	2.50 "	
54	Lewisville				3.24 "		8.50 "		
60	Thamesville				3.39 "		9.03 "		
68	Bothwell				4.00 "	10.37 "	9.20 "		
73	Newbury				4.13 "		9.30 "		
79	Glencoe				4.28 "	11.05 "	9.45 "		
84	Appin				4.38 "		9.53 "		
89	Longwood				4.52 "		10.05 "		
95	Mount Brydges				5.07 "		10.18 "		
100	Komoka				5.20 "		10.28 "		
110	LONDON	{ Arr. 4.30 am	A.M. 11 05 "	11 05 "	5.45 "	12.20 "	10.50 "	4.25 "	P.M.
		{ Dep. 4.45 "	6.00	11.30 "		A.M. 2.20 pm	4.30 "	4.30 "	7.00
111	London East		6.08				2.25 "		
119	Dorchester		6.21				2.42 "		7.30
129	Ingersoll		6.40	12.05 pm			3.05 "	5.03 "	8.12
133	Leachville		6.49				3.15 "		8.27
138	Woodstock		7.03	12.22 "			3.29 "	5.20 "	8.43
143	Eastwood		7.12				3.38 "		
148	Gobies		7.22				3.50 "		
150	Princeton		7.29				3.55 "		
157	Paris		7.42	12 53 "		Kincardine	4.12 "	5.49 "	9.45
165	St. George		7.59		B. & T. Accom.	Accom.	4.30 "		
167	HARRISBURG	{ Arr. 8.04	1.10 "	1.10 "	6.30 pm	11.40 am	4.35 "	6.03 "	
		{ Dep. 8.09	1.13 "				4.40 "		
170	Lynden		8.17		6.42 "	11.47 "	4.48 "		
174	Copetown		8.24		7.00 "	11.56 "	4.58 "		
179	Dundas		8.41		7.20 "	12.07 "	5.09 "		
185	HAMILTON	{ Arr. 6.55 "	8.55	1.50 "	7.45 "	12.20 pm	5.25 "	6.30 "	P.M.
		{ Dep. 7.00 "	9.20	1.55 "		12.25 "	5.35 "	6.40 "	8.00
197	Winona		9.45			1.07 "	5.57 "		
202	Grimsby		9.57			1.24 "	6.08 "		
206	Beamsville		10.08			1.39 "	6.17 "		
212	Jordan		10.19			2.03 "	6.28 "		
218	St. Catharines	7.56 "	10.33	2.51 "		2.27 "	6.41 "		9.40
220	Merriton		10.38			2.35 "	6.46 "		
229	NIAGARA FALLS	Arr. 8.20 "	11.00	3.15 "		3.05 "	7.05 "	7.55 "	10.15
	SUSPENSION BDG. (N.Y.C.)	" 8.40 "	11.10	3.25 "			7.15 "	8.05 "	
	BUFFALO (N.Y.C.)	" 9.45 "	12.20	4.40 "			9.00 "	9.00 "	
	BUFFALO, N.Y. L.E. & W.)	" 9.40 "	12.25	4.50 "			9.20 "	9.20 "	
	BUFFALO, N.Y.C. & W.S.	" 9.45 "	12.20	4.40 "			9.00 "	9.00 "	
	ROCHESTER	" 11.45 "	2.30	6.50 "			11.05 "	11.05 "	
	ALBANY	"** 7.35 pm	P.M. 2.20 am				6.40 am	6.40 am	
	BOSTON (B. H. T. & W.)	"	9.35 am				3.00 pm	3.00 pm	
	NEW YORK (N.Y.C.)	"	7.30 "				11.00 am	11.00 am	
	NEW YORK, N.Y.L.E. and W.	" 10.00 pm	7.17 "				10.55 "	10.55 "	
	NEW YORK (W. Sh.)	" 10.30 "	7.10 "				10.10 "	10.10 "	

LUBRICATING OILS.

(AMERICAN.)

We offer to the Trade a line of Oils unequalled by any in the market (and at a lower price). Call or send for Samples and prices.

A. B. McDONALD,
MANAGER

AMERICAN OIL CO.,

29 Adelaide St. West, TORONTO, ONT.

WELLAND BRANCH.

Going North.						STATIONS.				Going South.			
Acc.	Mail.	Mixed	Exp.	Exp.	Miles.					Acc.	Mail.		Exp.
P.M.	P.M.	A.M.		A.M.	0	Dep.	Port Colborne	Arr.	A.M.	A.M.		P.M.
5.50	2.45	8.45		6.15	1 1/2	Lumberstone	8.35	11.40	7.45	
6.02	3.02	9.10		6.29	4 1/2	Welland Junction	8.51	11.36	7.41	
6.10	3.15	9.26		6.41	7 1/2	Welland	8.19	11.27	7.32	
6.21	3.32	9.47		6.53	11 1/2	Port Robinson	8.10	11.17	7.22	
6.25	3.36	9.53		6.59	13	Allanburg Junction	7.57	11.08	7.12	
6.28	3.40	10.00		7.03	14	Allanburg	7.51	11.04	7.09	
6.40	3.58	10.15	A.M.	7.18	17 1/2	Thorold	7.47	11.00	7.05	
6.46	4.10	10.33	9.50	7.27	19 1/2	Merritton	7.35	10.46	6.55	
6.55	4.23	10.50	10.00	7.40	22	St. Catharines	7.27	10.33	6.46	
7.05	4.35	11.00	10.10	7.55	25	Arr. ...	Port Dalhousie	Dep.	7.15	10.33	6.36
P.M.	P.M.			A.M.						A.M.	A.M.		P.M.

Sarnia Division.

GOING EAST.						GOING WEST.					
Exp.	*Mixed	Express	Atlantic	Limited	Mixed	Miles.	Chi. cas. o.	Acc.	Mail.	Pacific.	*Mix.
p.m.	5.20 pm	2.15 pm	11.25 am	4.40 am	a.m.	0	a.m.	a.m.	p.m.	6.05 pm	a.m.
9.20	5.00 "	1.53 "	10.51 "	4.20 "	9.10	4 1/2	5.20	7.44	2.30	6.24 "
8.58	4.45 "	1.31 "	10.51 "	4.05 "	8.56	10	7.57	2.50	6.43 "
8.35	4.10 "	1.17 "	10.51 "	3.50 "	8.20	20 1/2	8.20	3.10	7.09 "	11.20
8.21	2.35 "	1.00 "	10.14 "	3.35 "	7.50	26 1/2	8.31	3.23	7.35 "	11.55
8.05	2.05 "	1.24 "	10.14 "	3.20 "	7.23	33 1/2	8.47	3.40	7.35 "	100pm
7.45	1.25 "	1.00 "	10.14 "	3.05 "	6.54	41 1/2	9.05	3.57	7.35 "	1.25
7.35	1.00 "	1.00 "	10.14 "	3.00 "	6.38	45 1/2	9.12	4.05	7.35 "	2.20
6.50	11.50 am	1.10 pm	8.35 "	7.20	51	6.00	8.35	3.30	6.50 "	11.50
7.16	12.20 pm	9.50 "	6.00	61 1/2	7.20	9.50	4.45	8.10 "	4.45
C.55	12.00 "	9.35 "	3.15 "	5.40	61	7.05	9.25	4.20	2.45
6.40	11.40 "	9.35 "	3.05 "	5.25	64	10.00	4.40	4.55	8.10 "	3.25
6.45	11.50 am	9.40 am	3.05 am	5.25	64	7.15	10.00	4.50	8.20 "

Atlantic, Limited, Chicago & Pacific Expresses run daily but will not stop at intermed to stations on Sundays.

London and Port Stanley Division.

Going South.						Going North.					
Accom.	Mail.	Accom.	Mail.	Miles.	STATIONS.	Miles.	Accom.	Mail.	Accom.	Mixed.	Mail.
7.50 pm	3.55 pm	10.35 am	23 1/2	Arr.	Port Stanley	6.25 am	4.35 pm
7.40 "	3.45 "	10.25 "	19 1/2	White's	6.35 "	4.45 "
7.33 "	3.35 "	10.15 "	7.13 am	15 1/2	Dep.	ST. THOMAS	6.45 "	4.55 "	P.M.
7.25 "	3.25 "	10.05 "	13 1/2	Arr.	Yarmouth	6.50 "	5.00 "	6.40 pm	10.05
7.20 "	3.20 "	9.59 "	9 1/2	Glanworth	6.54 "	5.05 "
7.12 "	3.12 "	9.50 "	5 1/2	Westminster	7.01 "	5.13 "	7.12 "
7.03 "	3.03 "	9.42 "	6.40 am	Dep.	London	1.58 "	5.22 "	7.55 "
6.45 "	2.50 "	9.30 "	2.10 "	5.35 "	7.55 "	10.35 "

SOUTHERN DIVISION.

HAMILTON TO TORONTO.

Hamilton to Toronto.							Mts. from Toronto.	STATIONS.	Toronto to Hamilton.					
Exp.	Exp.	Exp.	Acc.	Mail.	Exp. D'ly.	Mix.			Exp.	Exp.	Mail.	Acc. D'ly.	Exp.	Acc.
p. m.	a. m.	a. m.	p. m.	p. m.	p. m.	a. m.			p. m.	a. m.	a. m.	a. p. m.	p. m.	p. m.
4.30	8.45	10.15	1.55	7.05	7.45	12.15		Arr. TORONTO .. Dep	11.00	8.10	7.10	12.20	3.55	5.55
.....	8.30	6.66South Parkdale.....	7.19	6.35
.....	8.25	1.37	6.45	7 Mimico.....	11.20	7.32	5.15
.....	8.05	1.23	6.30	13 Port Credit.....	7.47	12.47	4.2	6.30
.....	7.55	1.16	6.24	11.02	16 Clarkson's.....	7.55	12.53	6.37
.....	7.44	9.38	1.03	6.13	21 Oakville.....	8.03	1.03	4.37	6.47
.....	7.34	12.52	6.04	25 Bronte.....	8.17	1.13	6.58
3.24	7.18	9.18	12.40	5.60	6.47	10.34	32 Burlington.....	8.30	1.28	4.57	7.13
.....	7.10	12.33	6.44	35 Waterdown.....	8.37	1.30	7.20
3.10	7.00	9.05	12.25	5.35	6.35	10.15	39	Dep. HAMILTON , G. T. Station... Arr.	12.30	9.20	8.45	1.45	5.10	7.30
.....	8.50	12.10		Dep. HAMILTON , N. & N.W. Stn. Arr.	5.25	7.40
p. m.	a. m.	a. m.	p. m.	p. m.	p. m.	p. m.			a. m.	a. m.	a. m.	p. m.	p. m.	p. m.

Suburban Trains leave Toronto 6.35, 10.55 a. m., and 2.00, 4.35 and 6.55 p. m. Returning, leave Mimico 7.55 a. m., 11.35 a. m., 2.35, 5.55 and 7.40 p. m., calling at Queen's Wharf, Parkdale, High Park and the Humber, both going and returning.
a Run on Sundays, but will not stop at intermediate stations.

Georgian Bay and Lake Erie District.

Going East.		STATIONS.	Going West.	
Mixed.	Exp.		Exp.	Mixed.
P. M.	p. m.		a. m.	p. m.
1.45	7.15	Arr. Port Dover	7.45	2.15
1.15	6.50 Simcoe	8.10	3.00
12.35	6.25 PORT DOVER JUNCTION	8.36	3.40
12.12	6.10 O terville	8.48	4.10
12.00	6.03 Brantford Junction.....	8.55	4.30
11.55	5.57 Norwich.....	9.00	4.37
11.30	5.45 Burgessville.....	9.15	4.47
10.50	5.20	Dep. }	9.40	5.15
10.20	4.45	Arr. }	10.31	5.35
10.10	4.41 WOODSTOCK	10.41	5.45
9.25	4.16 C. V. R. Junction.....	11.16	6.40
9.20	4.14 Tavistock.....	11.21	6.45
8.55	4.00	Dep. Tavistock Junction	11.40	7.10
a. m.	p. m.	Dep. Stratford	a. m.	p. m.

HOOF OINTMENT.

A perfect remedy and speedy cure for Hard and Cracked Hoofs in horses, Scratches or Cracked Feet, and for Cuts, Bites, Bruises, Sprains, Sore Shoulders, Galls, Swellings, etc. Nothing heretofore discovered, has such a marvelously healthy and stimulating action. A few applications will start the most hardened or contracted hoofs to growing. It is wonderfully softening in its nature and heals more rapidly (without scar-) than any other remedy. It contains no poison of any kind and is unchangeable in any climate. In half pound and pound cans, 25 and 50 cents.

DENSOLINE EMPORIUM,

29 Adelaide St. West, TORONTO, ONT.

VISITORS to TORONTO should go to 83 Yonge Street for a first-class **Oyster Stew,**

OR ANYTHING IN THE EATABLE LINE.

☞ CHOICE CONFECTIONERY AT ALL SEASONS.

J.A.S. COX & SON,

Pastry Cooks and Confectioners, 83 Yonge Street, Toronto.

SOUTHERN DIVISION.

Loop Line.

Mls. from Fort Erie.	From Buffalo.			To Buffalo.				
	GOING WEST.	Mixed.	Accom.	Express	GOING EAST.	Mixed.	Accom.	Express
	Erie BUFFALO St. Dep.		4.35 pm	7.30 am	GLENCOE .. Depart	5.10 pm		8.55 am
	" Black Rock		4.45 "	7.45 "	Ekfrid	5.30 "		9.14 "
	7 1/2 Stevensville		7.40 am		Middlemiss	5.47 "		9.28 "
	14 Brookfield		8.05 "		Thames River	5.55 "		
	16 1/2 Welland Junction ...		9.05 am		Lawrence	6.02 "		9.38 "
	24 1/2 Marshville		9.28 "		Bairds	6.14 "		9.45 "
	31 1/2 Moulton		9.55 "		Paynes	6.29 "		9.58 "
	38 1/2 Ditz		10.01 "		ST. THOMAS .. { Arr	6.40 "		10.10 "
	40 Darling Road		10.20 "		{ De	10.25 am	3.35 pm	7.25 am
	41 1/2 Canfield Junc... { Ar		10.26 "		New Sarum	10.46 "	3.48 "	7.38 "
	48 CAYUGA		11.10 "	6.45 pm	Aylmer	11.25 "	3.57 "	7.49 "
	53 1/2 Nelles' Corners		11.40 "	10.30 am	Corinth	12.00 "	4.15 "	8.09 "
	61 1/2 Jarvis		12.05 pm	7.02 "	Tilsonburg Junction.	12.43 pm		8.20 "
	67 1/2 Renton		12.45 "	7.15 "	Tilsonburg	12.50 "	4.31 "	8.25 "
	72 SIMCOE		1.05 "	7.34 "	Courtland	1.02 "	4.40 "	8.33 "
	76 1/2 Nixon		1.35 "	7.48 "	Delhi	1.35 "	4.56 "	8.50 "
	8 1/2 Delhi		1.55 "	8.00 "	Nixon	1.55 "	5.06 "	9.00 "
	88 1/2 Courtland		2.25 "	8.11 "	SIMCOE	2.10 "	5.17 "	9.10 "
	92 Tilsonburg		2.55 "	8.23 "	Renton	2.25 "	5.27 "	9.20 "
	99 1/2 Tilsonburg Junction.		3.15 "	8.40 "	Jarvis	2.45 "	5.40 "	9.32 "
	99 Corinth		3.35 "	8.58 "	Nelles' Corners	3.10 "	6.00 "	9.49 "
	107 Aylmer		4.15 "	9.13 "	CAYUGA	3.45 "	6.10 "	10.00 "
	112 1/2 New Sarum		5.10 "	9.31 "	Canfield Junc... { Ar	4.10 "	6.25 "	10.15 "
	117 1/2 ST. THOMAS.. { Arr		5.35 "	9.42 "	{ De	4.15 "		
	122 1/2 Paynes		6.00 "	9.55 "	Darling Road	4.33 "		
	126 1/2 Bairds		3.40 pm	7.25 am	Ditz	4.40 "		
	129 1/2 Lawrence		3.48 "	7.32 "	Moulton	4.40 "		
	134 Middlemiss		3.59 "	7.41 "	Marshville	5.00 "		
	139 1/2 Ekfrid		4.10 "	7.51 "	Welland Junction	5.40 "		
	145 GLENCOE		4.21 "	8.01 "	Brookfield	5.52 "		
			4.35 "	8.15 "	Stevensville	6.15 "		
			4.50 "	8.30 "	Fort Erie	6.40 "		
					BUFFALO { Black			
					" Erie St Ar	8.30 pm	12.55 pm	
					" Black Rock	8.40 "	1.10 "	

Brantford, Norfolk, & Port Burwell Branch.

To Tilsonburg.—West.						STATIONS.	To Harrisburg.—East.				
Acc.	Acc.	Acc.	Acc.	Acc.	Acc.	Miles from Tilsonburg	Acc.	Acc.	Acc.	Acc.	Acc.
	P.M.			A.M.	P.M.			P.M.	A.M.	P.M.	P.M.
....	8.50	8.15	12.32	Ar.....	12.50	8.23	9.05	3.45
....	8.45	8.05	12.27	Ar.....	1.00	8.30	9.15	4.00
....	8.28	A.M.	12.11	8.43	P.M.	4.15
....	8.16	12.00	1	8.55	4.30
....	8.11	11.55	14 1/2	9.02	4.35
....	7.58	11.43	18 1/2	*9.10	4.44
....	7.51	11.36	21 1/2	9.17	4.52
....	7.43	11.28	25 1/2	9.25	5.01
....	7.35	*11.20	28	*9.32	*5.08
....	7.27	*11.13	30 1/2	A.M.	*9.41	*5.15
....	7.15	P.M.	11.03	Dep. }	34 1/2	7.15	9.55	P.M.	5.26
....	7.00	5.10	12.30	8.45	10.50	Arr. }	34 1/2	7.30	11.00	3.15	5.37
....	6.30	4.45	11.55	8.15	10.15	Dep. }	42 1/2	8.00	11.30	3.20	5.57
....	P.M.	P.M.	A.M.	A.M.	A.M.	Dep.....	42 1/2	A.M.	A.M.	P.M.	P.M.
						Harrisburg					

FRANK CAYLEY,
REAL ESTATE & FINANCIAL AGENT,
 No. 55 KING STREET EAST (corner of Leader Lane),
 TORONTO.

Rents Collected, Investments Procured, Estates Managed, Insurance Effected.

CHICAGO AND GRAND TRUNK RAILWAY.

GOING EAST.					STATIONS.	GOING WEST.			
Valparaiso Accom. No. 11. Ex. Sun.	Atlantic Express No. 5. Daily.	Limited Express No. 3. Daily.	Mail and Express No. 1. Ex. Sun.	Distance.		Day Express No. 4. Daily.	Pacific Express No. 6. Daily.	Chicago Mixed No. 18. Ex. Sun.	Chicago Passenger No. 10. Ex. Sun.
8.25 pm	8.15 pm	3.25 pm	8.05 am	Lv. Chicago, cor 3d Ave. & Polk st..	Ar 6.25 pm	8.10 am	12.40 pm	8.45 am
5.35 "	8.25 "	3.35 "	8.15 "	1 1/2	" Archer Ave....	6.20 "	8.00 "	12.25 "	8.35 "
5.55 "	8.40 "	3.50 "	8.30 "	4 1/2	" C. & W. I. Junc.	6.05 "	7.45 "	12.13 "	8.15 "
6.07 "	8.49 "	3.59 "	8.33 "	8 1/2	" Elsdon.....	5.55 "	7.36 "	12.04 "	8.04 "
6.10 "	8.42 "	10	" Chicago Lawn	5.51 "	12.01 "	8.00 "
6.13 "	8.45 "	11	" McCaffrey.....	11.58 am	7.57 "
6.21 "	14 1/2	" Evergreen Park.	7.47 "
6.27 "	8.57 "	16 1/2	" Mt. Greenwood	11.47 "	7.41 "
6.29 "	17 1/2	" Clifton.....	7.37 "
6.32 "	9.14 "	4.20 "	8.55 "	19	" Blue Is. Junc.	5.30 "	7.12 "	11.40 "	7.30 "
6.42 "	9.21 "	9.12 "	23	" South Lawn...	11.34 "	7.22 "
7.20 "	9.50 "	39 1/2	" Redevale.....	11.00 "	6.45 "
7.87 "	10.00 "	45	" Ainsworth....	10.50 "	6.27 "
8.03 pm	10.29 pm	5.30 "	10.23 "	55 1/2	" Valparaiso....	4.00 "	5.52 "	10.30 "	*6.05 am
Arrive.	5.44 "	10.45 "	63 1/2	" Haskell's.....	3.43 "	10.15 "	Ex. Sun.
.....	11.15 "	80	" Stillwell....	9.45 "
.....	11.22 "	83 1/2	" Club House....	19.36 "
.....	11.40 "	91 1/2	" Crum's Point..	9.22 "
.....	11.55 "	99 1/2	" Olivers.....	9.10 "
.....	12.01 am	6.50 "	12.05 pm	100 1/2	" South Bend....	2.28 "	4.07 "	9.09 "
.....	12.08 1/2 "	12.11 "	103 1/2	" Michlwaika...	2.20 "	4.00 "	8.53 "
.....	12.26 1/2 "	12.33 "	113 1/2	" Edwardsburg..	1.58 "	3.38 "	8.34 "
Port Huron Accom. No. 7, Except Sunday	12.43 "	7.28 "	12.49 "	122 1/2	" Crossopolis...	1.42 "	3.19 "	8.17 "
.....	1.07 "	1.16 "	135 1/2	" Marcellus....	1.16 "	7.52 "
.....	1.27 "	1.35 "	140 1/2	" Schoolcraft..	12.55 "	2.32 "	7.30 "	Mall.
.....	1.43 "	8.11 "	1.50 "	151 1/2	" Vicksburg....	12.45 "	2.21 "	7.18 "	No. 2, Except Sunday.
.....	2.30 "	8.50 "	2.45 "	156 1/2	" Pavilion.....	7.03 "
5.30 am	2.35 "	8.55 "	3.45 "	175 1/2	Ar. } Battle Creek {	Lv. 12.05 pm	1.25 "	6.36 am
5.35 "	2.40 "	9.00 "	3.50 "	170 1/2	Lv. } Nichols.....	Ar. 11.45 am	1.20 "	10.05 pm	11.30 am
5.43 "	4.00 "	182	" Ramson.....	11.40 "	1.15 "	10.00 "	11.25 "
5.53 "	4.15 "	188 1/2	" Bellevue....	9.49 "	11.12 "
6.02 "	4.25 "	193 1/2	" Olivet.....	9.37 "	11.00 "
6.15 "	3.25 "	9.37 "	4.42 "	201	" Charlotte....	11.00 "	12.25 am	9.25 "	10.50 "
6.40 "	5.10 "	215 1/2	" Millet.....	9.03 "	10.37 "
6.50 "	4.00 "	10.07 "	5.20 "	220 1/2	" Lansing.....	8.96 "	10.09 "
6.57 "	4.07 "	10.14 1/2 "	5.30 "	223	" Trowbridge...	10.30 "	11.50 pm	8.26 "	10.00 "
7.06 "	5.45 "	228 1/2	" Pine Lake....	10.21 "	11.43 "	8.18 "	9.50 "
7.18 "	6.00 "	235	" Shaftsbury...	8.08 "	9.40 "
7.23 "	6.10 "	239 1/2	" Perry.....	7.55 "	9.27 "
7.45 "	6.32 "	247 1/2	" Bancroft.....	7.47 "	9.17 "
7.53 "	5.03 "	10.58 "	6.45 "	252 1/2	" Durand.....	11.00 "	7.30 "	9.00 "
8.18 "	7.17 "	256 1/2	" Duffield....	9.35 "	10.48 "	7.20 "	8.50 "
8.25 "	7.28 "	260 1/2	" Swariz Creek	6.47 "	7.41 "
8.30 "	7.35 "	263 1/2	" Otterburn....	6.38 "	8.34 "
8.45 "	5.40 "	11.27 "	7.55 "	269 1/2	" Flint.....	9.06 "	10.10 "	6.34 "	7.80 "
9.05 "	8.17 "	278 1/2	" Davison.....	6.20 "	8.17 "
9.14 "	8.26 "	282 1/2	" Elba.....	6.02 "	7.58 "
9.27 "	6.15 "	11.57 pm	8.42 "	289 1/2	" Lapeer.....	8.31 "	9.34 "	5.54 "	7.53 "
9.45 "	8.58 "	297	" Attica.....	5.40 "	7.43 "
9.55 "	6.33 "	9.10 "	301 1/2	" Imlay City....	5.26 "	7.30 "
10.25 "	9.42 "	317 1/2	" Emmet.....	9.10 "	5.18 "	7.23 "
10.35 "	9.52 "	322 1/2	" Goodells....	4.47 "	6.57 "
10.55 "	7.25 "	1.05 am	10.10 "	331 1/2	" Grand T. Junc.	7.25 "	8.15 "	4.37 "	7.42 "
11.05 "	7.35 "	1.15 "	10.20 "	335	" Port Huron....	7.15 "	8.05 "	4.20 "	6.25 "
11.15 am	7.48 am	1.25 am	10.30 pm	355	Ar. Port Gratiot	Lv. 7.05 am	7.55 pm	4.00 pm	6.05 am

* Daily except Sunday. § Daily. † Stop on Signal only.

CHICAGO, ILL.

Windsor Hotel

The Finest House of its class in Chicago.
162 Rooms on the European Plan.
145 to 153 Dearborn st.—6 blocks due north of C.
& G.T.R. Depot. Rates, 75c. to \$1.50 per day
Elevator annunciators in all the rooms. Fire es-
capes, and all the most modern hotel conveniences.
"Thompson's," the finest Restaurant in America,
run in connection. Location the most desirable of
any house in the city.

DETROIT, GRAND HAVEN & MILWAUKEE RAILWAY

Going West.					Going East.					
STATIONS.					STATIONS.					
In effect 1st May, 1887.					In effect 1st May, 1887.					
Night Express. D'ly	Mixed.	Steamboat Express.	Mail.	Morning Express. a. m.	Mls.	Mixed.	Detroit Express.	Mail.	Evening Express.	Limited D'ly
p. m.	p. m.	p. m.	a. m.	a. m.		a. m.	noon	p. m.	p. m.	p. m.
10.55	8.00	4.30	10.2	6.50	1	8.00	12.00	4.50	9.45	11.40
11.10	8.15	4.50	10.35	7.05	3	7.45	11.45	4.35	9.30	11.25
11.20	8.2	4.55	10.40	7.10	4	7.40	11.40	4.30	9.25	11.20
11.26	8.30	5.01	10.50	7.17	8	7.39	11.39	4.20	9.15	11.10
11.36	8.40	5.10	11.00	7.25	13	7.25	11.25	4.10	9.10	11.05
11.50	8.55	5.1	11.15	7.35	18	7.10	11.15	4.00	8.55	10.65
12.10	9.10	5.35	11.30	7.55	24	6.55	11.00	3.45	8.40	10.40
12.21	9.25	5.45	11.40	8.05	31	6.40	10.47	3.33	8.25	10.27
12.26	9.30	5.50	11.45	8.10	33	6.35	10.44	3.28	8.20	10.23
12.35	9.35	5.55	11.50	8.15	35	6.30	10.40	3.23	8.15	10.20
12.47	9.47	6.07	12.05	8.30	41	6.20	10.29	3.10	8.00	10.10
1.00	10.00	6.20	12.20	8.45	48	6.10	10.20	3.00	7.50	10.00
1.10	10.10	6.28	12.30	8.55	50	6.00	10.10	2.50	7.40	9.50
1.20	10.20	6.37	12.40	9.05	55	5.50	10.00	2.40	7.30	9.40
1.37	10.35	6.50	12.55	9.20	62	5.38	9.45	2.25	7.15	9.27
1.47	10.45	7.0	1.05	9.30	67	5.30	9.35	2.15	7.05	9.20
1.55	10.55	7.15	1.15	9.42	70	5.20	9.27	2.05	6.53	9.13
2.08	11.05	7.25	1.25	9.52	75	5.10	9.17	1.55	6.43	9.05
2.15	11.15	7.35	1.35	10.00	78	5.00	9.10	1.45	6.35	8.58
2.30	8.05	8.05	2.05	10.20	84	4.45	8.28	1.25	6.00	8.45
2.50	8.20	8.15	2.15	10.30	88	4.45	8.28	1.25	6.00	8.45
2.56	8.30	8.30	2.25	10.40	91	4.45	8.28	1.25	6.00	8.45
3.10	8.45	8.45	2.35	10.45	98	4.45	8.28	1.25	6.00	8.45
3.30	8.30	8.45	2.50	11.00	107	4.45	8.28	1.25	6.00	8.45
3.43	8.30	8.45	2.50	11.00	107	4.45	8.28	1.25	6.00	8.45
3.55	8.30	8.45	2.50	11.00	107	4.45	8.28	1.25	6.00	8.45
4.10	8.30	8.45	2.50	11.00	107	4.45	8.28	1.25	6.00	8.45
4.30	8.30	8.45	2.50	11.00	107	4.45	8.28	1.25	6.00	8.45
4.45	8.30	8.45	2.50	11.00	107	4.45	8.28	1.25	6.00	8.45
5.03	8.30	8.45	2.50	11.00	107	4.45	8.28	1.25	6.00	8.45
5.25	8.30	8.45	2.50	11.00	107	4.45	8.28	1.25	6.00	8.45
5.40	8.30	8.45	2.50	11.00	107	4.45	8.28	1.25	6.00	8.45
5.45	8.30	8.45	2.50	11.00	107	4.45	8.28	1.25	6.00	8.45
6.00	8.30	8.45	2.50	11.00	107	4.45	8.28	1.25	6.00	8.45
6.15	8.30	8.45	2.50	11.00	107	4.45	8.28	1.25	6.00	8.45
6.20	8.30	8.45	2.50	11.00	107	4.45	8.28	1.25	6.00	8.45
6.27	8.30	8.45	2.50	11.00	107	4.45	8.28	1.25	6.00	8.45
6.36	8.30	8.45	2.50	11.00	107	4.45	8.28	1.25	6.00	8.45
6.0	8.30	8.45	2.50	11.00	107	4.45	8.28	1.25	6.00	8.45
6.45	8.30	8.45	2.50	11.00	107	4.45	8.28	1.25	6.00	8.45
a. m.	a. m.	a. m.	a. m.	p. m.		a. m.	a. m.	p. m.	a. m.	

† Flag Station, train stops only on Signal. All trains run daily, Sunday excepted, unless when otherwise specified.

MICHIGAN AIR LINE.

In effect Nov. 28, 1886.

LENOX TO JACKSON.					JACKSON TO LENOX.					
Miles	STATIONS.		Pass.	Pass.	Mixed	STATIONS.		Pass.	Pass.	Mixed
			P.M.		A.M.				A.M.	P.M.
0	LENOX	Lve.	5.55		9.35	JACKSON	Lve.	7.00		2.40
7	Armada	"	6.15		10.00	Cooper Street	"			
14	Romeo	"	6.30		10.30	Portage River	"			
20	Washington	"	6.45		10.55	Henrietta	"			3.20
22	Shelby	"	6.50		11.05	Stockbridge	"	7.53		3.55
25	D. & B. C. Crossing	"	7.00		11.20	Mount Ferrier	"			
26	Rochester	"	7.05		11.30	Pinckney	"	8.25		5.15
32	Auburn	"	7.17		11.55	Hamburg	"	8.43		5.40
					P.M.					
36	Pontiac	{ Arr Lve	7.30		12.10	SOUTH LYON	Lve.	9.06		6.40
					P.M.					
			2.25		5.30	New Hudson	"	9.15		7.00
40	Orchard Lake	"	2.40		5.60	Wixom	"	9.31		7.20
48	Walled Lake	"	3.00		6.20	Walled Lake	"	9.38		7.30
51	Wixom	"	3.10		6.35	Orchard Lake	"	10.00		7.55
53	New Hudson	"	3.22		6.55	Pontiac	{ Arr Lve	A.M. 6.35	10.20	8.05
59	SOUTH LYON	"	3.35		8.00	Auburn	"	6.45		2.00
68	Hamburg	"	3.55		8.43	Rochester	"	7.00		2.15
75	Pinckney	"	4.14		9.10	D. & B. C. Crossing	"	7.05		2.40
83	Mount Ferrier	"				Shelby	"	7.12		2.50
88	Stockbridge	"	4.50		10.05	Washington	"	7.17		3.00
96	Henrietta	"			10.35	Romeo	"	7.30		3.10
100	Portage River	"				Armada	"	7.45		3.35
104	Cooper Street	"				LENOX	Arr.	8.00		4.05
106	JACKSON	Arr.	5.40		11.15					4.85

Chicago, Detroit & Grand Trunk Junction.

In Effect May. 1, 1887.

DETROIT TO PORT HURON.					PORT HURON TO DETROIT.					
No. 5. Express Daily.	No. 11. Mixed. Ex. Sun.	No. 3. Pass.	No. 1. Express.	Miles from Detroit.	STATIONS.	Miles from Pt. Huron.	No. 2. Exp. daily.	No. 4. Mail.	No. 6. Express Ex. Sun.	No. 12. Mixed.
11.00 pm	12 00	P.M. 4.20	8.00 am		Lve. DETROIT ... Arr.	58 1/2	A.M. 9.40	P.M. 6.10	P.M. 9 10	
			8.00 am	 Detroit Junction ...	58 1/2	9.35	6.10		3 00 pm
11.20 "	12.30	4.45	8.20 am	4 1/2 Milwaukee Junction ...	54 1/2	9.20	5.50	3.50	2.30 pm
	12.55	5.05	8.40 am	16 1/2	Arr. } Fraser ... { Lve.	42 1/2	9.00	5.30		1.50 pm
					Lve. } Mount Clemens ...	37	8.50	5.20	8.24	1.30 pm
11.52 "	1.25	5.20	8.50 am	21 1/2 Chesterfield ...	32 1/2	8.38	5.10		1.13 pm
	1.40	5.30	9.00 am	26 1/2 New Haven ...	27	8.27	5.00	8.04	12.53 pm
12.09 "	1.56	5.42	9.11 am	31 1/2	Arr. } Lenox ... { Lve.	21 1/2	8.15	4.47	7.55	12.33 pm
					Lve. } Smith's Creek ...	10 1/2	7.45	4.25		11.55 am
	2.40	6.17	9.42 am	48 1/2 Chicago & Grand Tr'k Junc.	8 1/2	7.25	4.10	7.25	11.20 am
12.50 am	3.00	6.30	9.55 am	55 1/2	Arr. Port Huron ... Lve.		7.05	4.00	7.15	11.00 am
1.00 "	3.15	6.40	10.05 am	58 1/2	(Fort Gratiot.)		6.55	3.50	7.05	
1.10 "	3.30	6.50	10.15 am							
		P.M.							P.M.	

Sunday Train for Mt. Clemens leaves Detroit 10.00 a.m. Returning arr. Detroit 5.25 p.m.

" Good Book Keeping to a man of business is equal to one-half his capital,"
—COMMISSIONER FONBLANQUE.

DAY'S COMMERCIAL COLLEGE.

College Rooms; 96 King St. West, }
OPPOSITE ROYAL OPERA HOUSE. } JAMES E. DAY, Principal.

PORTABLE ENGINES & SAW-MILLS

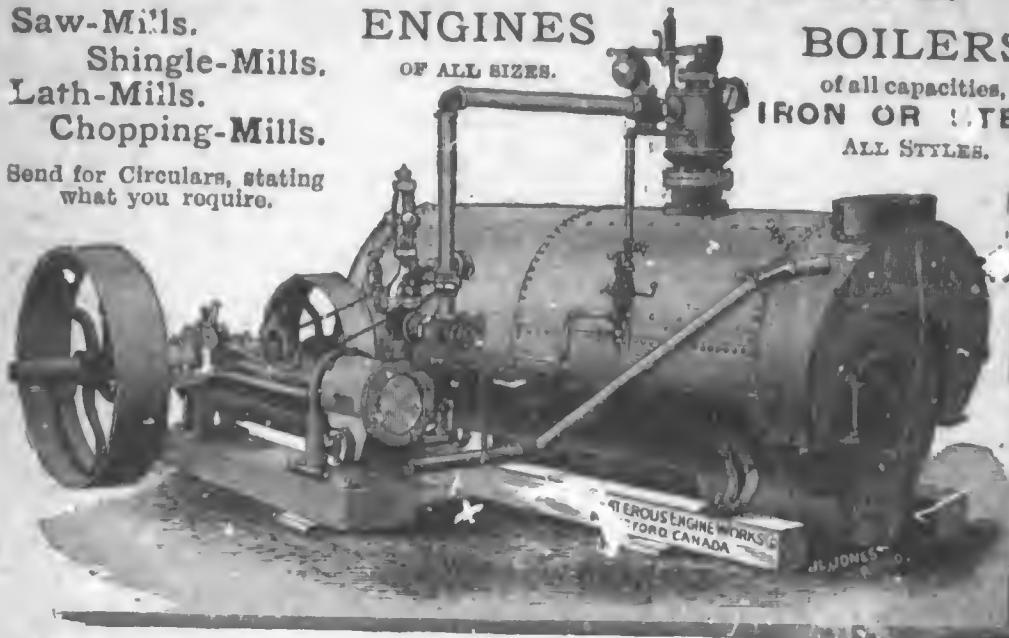
Of all capacities—from 3000 feet of lumber and up per day.

Saw-Mills.
Shingle-Mills.
Lath-Mills.
Chopping-Mills.

ENGINES
OF ALL SIZES.

BOILERS
of all capacities,
IRON OR STEEL,
ALL STYLES.

Send for Circulars, stating
what you require.



154 St. James St., Montreal.
30 St. Paul Street, Quebec.

Watercross Engine Works Co. Brantford, Canada.
St. Paul, Minn., U.S.A.

STEEL WIRE DOOR MATS

ARE UNSURPASSED FOR

DURABILITY AND CLEANLINESS.

— FOR —

Churches, Hotels, Schools, Elevators, Steam-
Boats, Street Cars, Private Residences,
are the best Mats ever used.

OFFICES AND FACTORY:

6 W ELLINGTON ST. WEST.

TORONTO, ONTARIO.

PORTABLE ENGINES SAW-MILLS

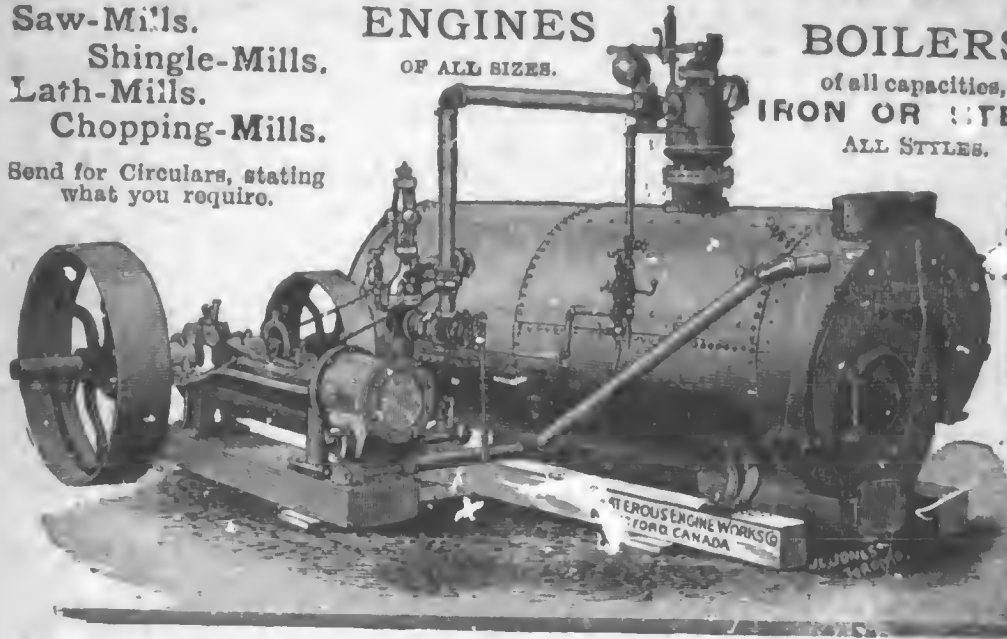
Of all capacities—from 3000 feet of lumber and up per day.

Saw-Mills.
Shingle-Mills.
Lath-Mills.
Chopping-Mills.

ENGINES
OF ALL SIZES.

BOILERS
of all capacities,
IRON OR STEEL,
ALL STYLES.

Send for Circulars, stating
what you require.



154 St. James St., Montreal.
30 St. Paul Street, Quebec.

Waterpower Engines, Mill, Saw, Brantford, Ontario

THE FENSOM ELEVATOR WORKS.

JOHN FENSOM, Proprietor.

—MANUFACTURER OF—

*Hydraulic, Steam and Hand Power, Passenger
and Goods Elevators.*

ALSO DUMB WAITERS.

34, 36 AND 38 DUKE STREET, TORONTO.

ASK YOUR GROCER FOR



The Dominion White Laundry Starch,

The Crystal Gloss Starch. 1 lb. boxes.

The Snow Flake Starch. 1 lb. box.

The Crystal White Starch.

Our "Dominion Prepared Corn," and "Pul-
verized Corn" Starch, for food, is the
best in the market.


THE
GRAPE SUGAR
REFINING COMPANY
AND
Dominion Starch Works
WALKERVILLE
ONTARIO


Our "Empress Drips Syrup" is the purest
TAKE NO OTHER.

MIDLAND RAILWAY

OF ENGLAND.

—THE ONLY LINE BETWEEN—

Liverpool AND London

Passing through the Magnificent and Picturesque Scenery of the

PEAK OF DERBYSHIRE AND THE VALE OF MATLOCK

An Accelerated Service of EXPRESS TRAINS Now Running Between
LIVERPOOL and LONDON.

PULLMAN CARS.—Passengers holding First-class Tickets via the Midland Railway are now allowed to ride in the Pullman Draw-room Cars attached to day express trains, without extra charge.

Saloon Carriages with Lavatory Compartments, provided for the exclusive use of parties of seven or more passengers, WITHOUT EXTRA CHARGE.

The Midland Grand Hotel, one of the largest and best appointed in Europe, adjoins the station at London, and visitors will find it replete with every convenience.

THE EQUIPMENT OF THE LINE

Is of the best character throughout, including all the latest improvements in railway construction.

Luncheon Baskets can be had at different points along the line.

Omnibuses are provided by the Company to convey Passengers and Baggage between the station and hotels, or private residences in London, at fixed and moderate charges.

CHECKING OF BAGGAGE.—The Midland Railway Company have arranged to check the baggage of passengers booked to travel from Liverpool to London by their route, either from New York, when passengers have purchased their tickets before leaving the city, or from the "Landing Stage," Liverpool, when passengers obtain their tickets after arrival. Full particulars may be obtained from Mr. M. H. Hurley, 261 Broadway, New York, or from notices to be found on board of any of the Atlantic steamers.

Time Tables, Tickets, and every information respecting the arrangements of the Midland Railway, may be obtained, on arrival at Liverpool, from Mr. J. B. Curtis, the Company's Agent, at their office, 21 Castle street. A representative of the Midland Railway Company will also be in attendance on the landing stage, to meet steamers on arrival.

TICKETS,

TIME TABLES, and full particulars of the Midland Company's arrangements and facilities for travelling in Europe, may be obtained from the Company's General Passenger Agents in America.

JOHN NOBLE,
General Manager, Derby.

THOS. COOK & SON,
261 Broadway, NEW YORK

The Only Through Pullman Route
 BETWEEN
 TORONTO, NIAGARA FALLS AND NEW YORK
 VIA THE
ERIE RAILWAY.

New York passengers landed up-town or down-town. Convenient to all hotels and steamship piers. The favorite line for all classes of passengers to and from Europe.

"THE ONTARIO LIMITED"
 Has through buffet cars between Toronto, Niagara Falls and New York. All through trains over the Grand Trunk have Pullman's Palace Cars from Chicago, Detroit, Port Huron, and London to New York. No extra charge for quick time.

L. P. FARMER,
 G. P. AGENT,
 NEW YORK.

W. C. RINEARSON,
 G. N. P. AGENT,
 BUFFALO.

GEO. DEHAVEN,
 A. G. P. AGENT,
 NEW YORK

S. J. SHARPE, Canadian Passenger Agent,
 CORNER WELLINGTON AND SCOTT STREETS, TORONTO, ONT.

International Tent and Awning Co.,
 184 SPARKS STREET, OTTAWA,

MANUFACTURERS OF

Tents, Camp Furniture, Awnings, Window Shades, Plain and Decorated Curtain Poles, Curtain Chains, Flags of all Nations, Waterproof Horse and Wagon Covers, &c., &c., on hand and made to order in any size or style on short notice.

NOTICE.—Special Discount to Lumbermen, Contractors and other large Buyers.

SEND FOR PRICES. CATALOGUE FREE ON APPLICATION.

Address, **A. G. FORGIE**
 Manager International Tent & Awning Co.,
 184 SPARKS STREET, OTTAWA.



