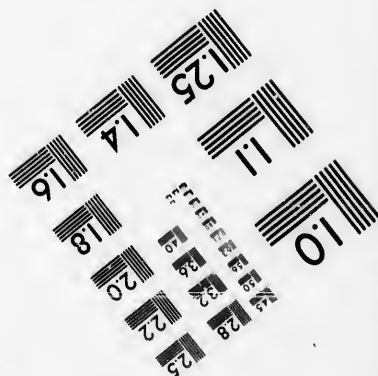
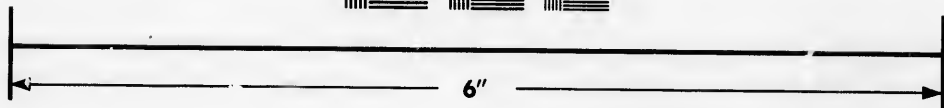
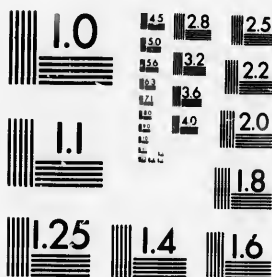


**IMAGE EVALUATION
TEST TARGET (MT-3)**



**Photographic
Sciences
Corporation**

23 WEST MAIN STREET
WEBSTER, N.Y. 14580
(716) 872-4503

**CIHM/ICMH
Microfiche
Series.**

**CIHM/ICMH
Collection de
microfiches.**



Canadian Institute for Historical Microreproductions / Institut canadien de microreproductions historiques

© 1986

Technical and Bibliographic Notes/Notes techniques et bibliographiques

The Institute has attempted to obtain the best original copy available for filming. Features of this copy which may be bibliographically unique, which may alter any of the images in the reproduction, or which may significantly change the usual method of filming, are checked below.

L'Institut a microfilmé le meilleur exemplaire qu'il lui a été possible de se procurer. Les détails de cet exemplaire qui sont peut-être uniques du point de vue bibliographique, qui peuvent modifier une image reproduite, ou qui peuvent exiger une modification dans la méthode normale de filmage sont indiqués ci-dessous.

- Coloured covers/
Couverture de couleur
- Covers damaged/
Couverture endommagée
- Covers restored and/or laminated/
Couverture restaurée et/ou pelliculée
- Cover title missing/
Le titre de couverture manque
- Coloured maps/
Cartes géographiques en couleur
- Coloured ink (i.e. other than blue or black)/
Encre de couleur (i.e. autre que bleue ou noire)
- Coloured plates and/or illustrations/
Planches et/ou illustrations en couleur
- Bound with other material/
Relié avec d'autres documents
- Tight binding may cause shadows or distortion along interior margin/
Le reliure serrée peut causer de l'ombre ou de la distorsion le long de la marge intérieure
- Blank leaves added during restoration may appear within the text. Whenever possible, these have been omitted from filming/
Il se peut que certaines pages blanches ajoutées lors d'une restauration apparaissent dans le texte, mais, lorsque cela était possible, ces pages n'ont pas été filmées.
- Additional comments: [Printed ephemera] [4] p.
Commentaires supplémentaires:

- Coloured pages/
Pages de couleur
- Pages damaged/
Pages endommagées
- Pages restored and/or laminated/
Pages restaurées et/ou pelliculées
- Pages discoloured, stained or foxed/
Pages décolorées, tachetées ou piquées
- Pages detached/
Pages détachées
- Showthrough/
Transparence
- Quality of print varies/
Qualité inégale de l'impression
- Includes supplementary material/
Comprend du matériel supplémentaire
- Only edition available/
Seule édition disponible
- Pages wholly or partially obscured by errata slips, tissues, etc., have been refilmed to ensure the best possible image/
Les pages totalement ou partiellement obscurcies par un feuillet d'errata, une pelure, etc., ont été filmées à nouveau de façon à obtenir la meilleure image possible.

This item is filmed at the reduction ratio checked below/
Ce document est filmé au taux de réduction indiqué ci-dessous.

10X	12X	14X	16X	18X	20X	22X	24X	26X	28X	30X	32X
			/								

The copy filmed here has been reproduced thanks to the generosity of:

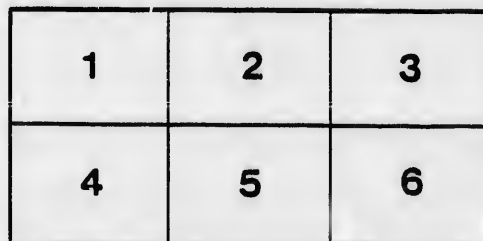
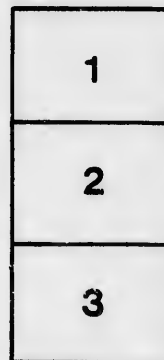
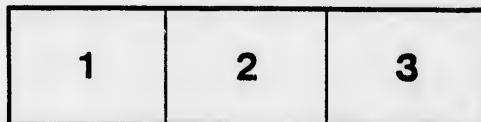
Manuscript Division
Public Archives of Canada

The images appearing here are the best quality possible considering the condition and legibility of the original copy and in keeping with the filming contract specifications.

Original copies in printed paper covers are filmed beginning with the front cover and ending on the last page with a printed or illustrated impression, or the back cover when appropriate. All other original copies are filmed beginning on the first page with a printed or illustrated impression, and ending on the last page with a printed or illustrated impression.

The last recorded frame on each microfiche shall contain the symbol \rightarrow (meaning "CONTINUED"), or the symbol ∇ (meaning "END"), whichever applies.

Maps, plates, charts, etc., may be filmed at different reduction ratios. Those too large to be entirely included in one exposure are filmed beginning in the upper left hand corner, left to right and top to bottom, as many frames as required. The following diagrams illustrate the method:



L'exemplaire filmé fut reproduit grâce à la générosité de:

Division des manuscrits
Archives publiques du Canada

Les images suivantes ont été reproduites avec le plus grand soin, compte tenu de la condition et de la netteté de l'exemplaire filmé, et en conformité avec les conditions du contrat de filmage.

Les exemplaires originaux dont la couverture en papier est imprimée sont filmés en commençant par le premier plat et en terminant soit par la dernière page qui comporte une empreinte d'impression ou d'illustration, soit par le second plat, selon le cas. Tous les autres exemplaires originaux sont filmés en commençant par la première page qui comporte une empreinte d'impression ou d'illustration et en terminant par la dernière page qui comporte une telle empreinte.

Un des symboles suivants apparaîtra sur la dernière image de chaque microfiche, selon le cas: le symbole \rightarrow signifie "A SUIVRE", le symbole ∇ signifie "FIN".

Les cartes, planches, tableaux, etc., peuvent être filmés à des taux de réduction différents. Lorsque le document est trop grand pour être reproduit en un seul cliché, il est filmé à partir de l'angle supérieur gauche, de gauche à droite, et de haut en bas, en prenant le nombre d'images nécessaire. Les diagrammes suivants illustrent la méthode.

TABLE OR SCALE OF FEES

Payable to the Several Officers therein Mentioned.

CLERK OF THE PEACE.

AUTHORITY	SERVICES.	Payable from Dist. Treasury.	Payable by parties
		£ S. D.	S. D.
47, Geo. 3, c. 11, s. 1, 2.	Drawing precept for Quarter Sessions, attending Commissioners, and transmitting to Sheriff	1 00 0	
	Attending each Quarter Sessions.....	1 10 "	
	Making up Records of each Quarter Sessions.....	2 10 "	
	Notice of every Appointment.....	" 1 "	
	Making up list of Jurors, for every 100 names.....	" 2 6	
	Making up and transmitting to Inspector General, the Estreats of each Session	" 5 "	
	*Drawing Indictment.....	" 10 "	
	*Bench Warrant.....	" 5 "	
	*Writ of Subpoena.....	" 2 6	
	*Every Subpoena ticket.....	" " 6	
	*Arraigning Prisoner and entering Plea.....	" 1 3	
	*Empannelling and charging Jury.....	" 2 6	
*Receiving Verdict and Recording Judgment.....	" 1 3		
*Recognizance in open Court (except for the peace or good behaviour	" 2 6		
*Discharging Recognizance.....	" 1 "		
*Estreating Recognizance at General Qr. Sessions, each	" 1 3		
48, Geo. 3, c. 13, s. 3.	Making list of Jurors assessed over £100, for Sheriff, each year	" 5 "	
56, Geo. 3, c. 3, s. 5.	Certifying and transmitting Inspector's Lists (per annum)	2 " "	
7 W. 4, c. 10 s. 3, 4, 7.	Making up Extracts or Rolls and Warrants, in duplicate, and transmitting one copy to Sheriff & drawing up oath	" 5 "	
" s. 11.	Receiving and transmitting the duplicate on return from the Sheriff to the Receiver General	" 2 6	
	For filing each paper belonging to the District.....	" " 3	
3 Vic. c. 20 s. 6.	Attending and making up Record of Adjourned Sessions when any application or business is bro't before the same	" 5 "	
	Ditto. ditto. when no business is to be done	" 2 6	

** In cases of Felony; also in Assault and Battery and other Misdemeanors, when the Defendant is acquitted, but the Court are of opinion that there was just ground of action. Also in cases where the Defendant is found guilty, but he has not the means to pay costs otherwise payable by the parties.*

CLERK OF THE PEACE—(CONTINUED.)

AUTHORITY.		£	s.	d.	s.	d.
6 G. 4, c. 7, s. 25.	Making up warrants to the Sheriff for the sale of portion of each lot returned as Absentee Land	“	10	“		
6 W. 4, c. 4, s. 8.	For causing the names of persons taking out License to be published in two Newspapers, each copy	“	2	6		
2 V. c. 11, s.	Calculating Lunatic Assessment for each Township, to be charged by the Treasurer against that Fund				20	0
59 G. 3, c. 2, s. 7.	Transmitting to Inspector General, quarterly, a statement of the rates imposed by the Magistrates on all Licenses	“	2	6		
4 & 5 Vic. c. 3, s. 3.	Transmitting to the Secretary of the Province a copy of alterations of Divisions in the Small Debts Court	“	2	6		
	Transmitting to the respective Divisions of the Small Debts Court orders of Sessions concerning such divisions	“	1	3		
	Stationery, per quarter	1	“	“		
	Writing each letter, to Government, or by order of the Magistrates in Sessions	“	1	6		
	Copy in Letter Book	“	“	9		
	Each Circular (sent)	“	“	9		
	Copy in Letter Book (of one copy)	“	“	6		
34 Geo. 3, c. 12, s. 6.	Making Annual Return to Qr. Sessions in April of all Tavern Keepers and their Sureties	“	2	6		
1 V. c. 21 s. 15	Making up Reports of Defaulters to Magistrates	“	1	3		
4 & 5 Vic. c. 12, s. 4, 5.	Schedule of Convictions, in triplicate, quarterly,	1	“	“		
47 Geo. 3, c. 11, s. 1.	Transmitting a copy of the same to the Inspector General	“	2	6		
	Recognizance for the Peace or good behaviour, payable by the parties bound, 5s.					
	Discharging the same				2	6
	Writ of Certiorari				5	“
2 Geo. 4, c. 14, s. 2.	Drawing Certificate of alienation of estate of Femme Covert				5	“
	Ditto, ditto, of Dower				5	“
45 G. 3 c. 2 s. 8	Certifying claim under the Heir and Devizee Act,				2	6
48 Geo. 3, c. 10, s. 6.	Making up and affixing List of Land claims, every three months, each entry				1	3
1 W. 4, c. 1.	Drawing up License to Ministers to celebrate the ceremony of Marriage				5	“
	Administering Oath of Allegiance to Ministers (when necessary) and granting certificate				1	3
	Registering Marriage Certificate				2	6
	Receiving and filing application of persons applying to be Licensed Inn Keepers, or Keepers of Houses for the sale of Ale and Beer				1	“

34 G
c. 12

7 W
s. 4.

R
Salari
in lie

AUT

7 W
c. 19

prov
pay

CLERK OF THE PEACE.—(CONTINUED.)

		s.	d.
34 Geo. 3, c. 12, s. 6.	Taking Recognizance of Inn Keepers, &c.	2	6
	Filing Recognizance of Inn Keepers, &c.	1	"
	Certifying to Inspector that Recognizances have been entered into and the same filed	1	3
	Oath of Allegiance to Tavern Keepers &c. when necessary	1	3
	Copy of Regulations to be furnished by Clerk of the Peace	1	3
	Drawing U. E. Loyalist Petition 2s. 6d. }		
	Adding Affidavits 2s. 6d.—Oath of Allegiance 2s. 6d. } ..	7	6
7 W. 4, c. 8 s. 4.	Filing every affidavit of a Mother of a Bastard Child...	"	3
	Filing papers not otherwise provided for	"	3

RESOLVED—That if the Clerk of the Peace signify his concurrence, an annual Salary of £100, Cy. (in quarterly instalments) be paid to that Officer hereafter, in lieu of the foregoing and all other fees payable to him from the District Treasury.

SHERIFF'S FEES.

AUTHORITY.	SERVICES.	In Q. B.	In Q. S.
	Summoning Grand and Petit Juries, for each Court . . .	6	" 3
	Drawing up Jury Panels and Tickets for ditto		" 5
	Attending Courts, per day	" 12	" 12
	* Travelling in going to make arrest, or other service, per mile	" "	" 4
	* Serving Subpoena on each person	" 1	" 1
	* Serving Warrants	" 5	" 5
	* Seizing Fines or Issues on Recognizances estreated, Five Pounds per centum on the sum levied, besides mileage.		
	Bringing up Prisoner on Attachment or Habeas Corpus and making return	" 10	"
	Notice of holding Sessions or Assizes, and furnishing Printer with a copy for publication	" 10	" 10
	Making quarterly return of the state of the Gaol to the Government Office, each quarter		" 5
	Making Calendar	" 5	" 5
	Making out return of Constables for Clerk of Assize, each Court	" 5	"
7 W. 4, c. 19, s. 4.	Making up return to the Secretary of the Province of Lands sold for Taxes by him		" 1

* Payable by the parties, except in cases of Felony; subject, however, to the provisions contained in the Memorandum inserted at the bottom of page 1st of Fees payable to the Clerk of the Peace.

CORONER'S FEES.

AUTHORITY.		£	s.	d.
7 W. 4, c 19 s. 4.	Warrant to Summon a Jury.....	“	2	6
	Taking Recognizance, each.....	“	2	6
	Necessary travel to take Inquest, per mile.....	“	“	10
	Taking Inquisition.....	1	2	3
	Warrants to apprehend and commit, each.....	“	2	6
	Certifying proceedings for Crown Office, when required....	“	5	“
	Post Mortem examination by a Surgeon, when necessary....	1	“	“

MEDICAL ATTENDANT.

Attending on prisoners in Gaol & finding medicines, pr. ann.	2	10	“
--	---	----	---

GAOLER.

Attending on prisoners as Gaoler, bringing up and remanding prisoners, &c., Salary per annum	50	“	“
Meat and drink for each prisoner, per diem.....	“	1	“

CRIER.

Attending the several Courts, per diem.....	“	5	“
---	---	---	---

HIGH CONSTABLE.

Attending the several Courts, per diem.....	“	5	“
---	---	---	---

CONSTABLES' FEES.

Attending the several Courts, per diem.....	“	2	6
Serving Warrant.....	“	2	6
Serving Summonses and Subpoenas.....	“	1	3
Levy and Sale under Warrant of Distress.....	“	3	9
Necessary travel to make service of any process, per mile..	“	“	4
Attending upon Magistrates during trials under Summary Pun- ishment Act, or examinations in cases of felony &c, pr. hour	“	“	6
Keeping prisoners in custody, except when conveying them to Gaol, and board, each 24 hours	“	5	“
Necessary travel when conveying prisoners to Gaol, pr. mile	“	“	6
Summoning Coroner's Jury, making return, and attending Inquests.....	“	10	“

Adopted in General Quarter Sessions of the Peace, held at the Court House in
Simcoe, the 11th day of April, 1843.

EDWARD GILMAN, CHAIRMAN.

