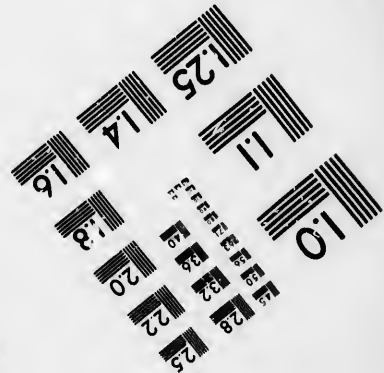
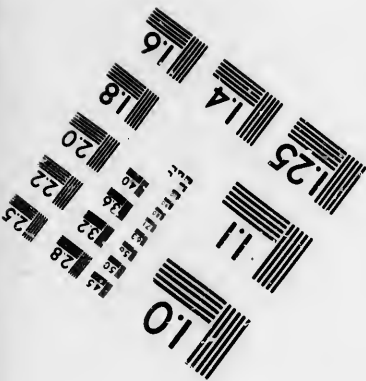
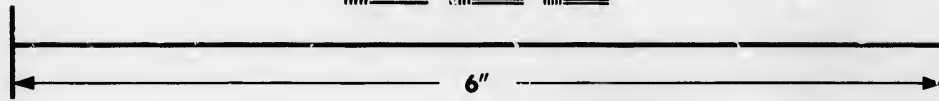
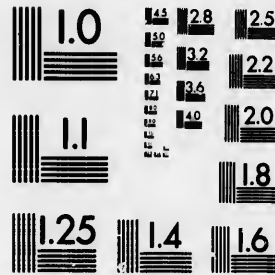


**IMAGE EVALUATION
TEST TARGET (MT-3)**



**Photographic
Sciences
Corporation**

23 WEST MAIN STREET
WEBSTER, N.Y. 14580
(716) 877-4503

Canada

Technical and Bibliographic Notes/Notes techniques et bibliographiques

The Institute has attempted to obtain the best original copy available for filming. Features of this copy which may be bibliographically unique, which may alter any of the images in the reproduction, or which may significantly change the usual method of filming, are checked below.

L'institut a microfilmé le meilleur exemplaire qu'il lui a été possible de se procurer. Les détails de cet exemplaire qui sont peut-être uniques du point de vue bibliographique, qui peuvent modifier une image reproduite, ou qui peuvent exiger une modification dans la méthode normale de filmage sont indiqués ci-dessous.

- Coloured covers/
Couverture de couleur
- Covers damaged/
Couverture endommagée
- Covers restored and/or laminated/
Couverture restaurée et/ou pelliculée
- Cover title missing/
Le titre de couverture manque
- Coloured maps/
Cartes géographiques en couleur
- Coloured ink (i.e. other than blue or black)/
Encre de couleur (i.e. autre que bleue ou noire)
- Coloured plates and/or illustrations/
Planches et/ou illustrations en couleur
- Bound with other material/
Relié avec d'autres documents
- Tight binding may cause shadows or distortion along interior margin/
La reliure serrée peut causer de l'ombre ou de la distorsion le long de la marge intérieure
- Blank leaves added during restoration may appear within the text. Whenever possible, these have been omitted from filming/
Il se peut que certaines pages blanches ajoutées lors d'une restauration apparaissent dans le texte, mais, lorsque cela était possible, ces pages n'ont pas été filmées.
- Additional comments: [Printed ephemera] [4] p.
Commentaires supplémentaires:

- Coloured pages/
Pages de couleur
- Pages damaged/
Pages endommagées
- Pages restored and/or laminated/
Pages restaurées et/ou pelliculées
- Pages discoloured, stained or foxed/
Pages décolorées, tachetées ou piquées
- Pages detached/
Pages détachées
- Showthrough/
Transparence
- Quality of print varies/
Qualité inégale de l'impression
- Includes supplementary material/
Comprend du matériel supplémentaire
- Only edition available/
Seule édition disponible
- Pages wholly or partially obscured by errata slips, tissues, etc., have been refilmed to ensure the best possible image/
Les pages totalement ou partiellement obscurcies par un feuillet d'errata, une pelure, etc., ont été filmées à nouveau de façon à obtenir la meilleure image possible.

This item is filmed at the reduction ratio checked below/
Ce document est filmé au taux de réduction indiqué ci-dessous.

10X	12X	14X	16X	18X	20X	22X	24X	26X	28X	30X	32X
							/				

The copy filmed here has been reproduced thanks to the generosity of:

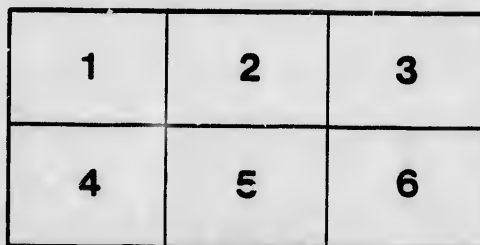
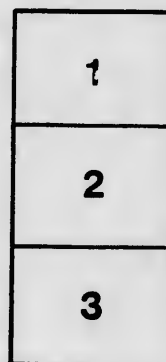
D. B. Weldon Library
University of Western Ontario
(Regional History Room)

The images appearing here are the best quality possible considering the condition and legibility of the original copy and in keeping with the filming contract specifications.

Original copies in printed paper covers are filmed beginning with the front cover and ending on the last page with a printed or illustrated impression, or the back cover when appropriate. All other original copies are filmed beginning on the first page with a printed or illustrated impression, and ending on the last page with a printed or illustrated impression.

The last recorded frame on each microfiche shall contain the symbol \rightarrow (meaning "CONTINUED"), or the symbol ∇ (meaning "END"), whichever applies.

Maps, plates, charts, etc., may be filmed at different reduction ratios. Those too large to be entirely included in one exposure are filmed beginning in the upper left hand corner, left to right and top to bottom, as many frames as required. The following diagrams illustrate the method:



L'exemplaire filmé fut reproduit grâce à la générosité de:

D. B. Weldon Library
University of Western Ontario
(Regional History Room)

Les images suivantes ont été reproduites avec le plus grand soin, compte tenu de la condition et de la netteté de l'exemplaire filmé, et en conformité avec les conditions du contrat de filmage.

Les exemplaires originaux dont la couverture en papier est imprimée sont filmés en commençant par le premier plat et en terminant soit par la dernière page qui comporte une empreinte d'impression ou d'illustration, soit par le second plat, selon le cas. Tous les autres exemplaires originaux sont filmés en commençant par la première page qui comporte une empreinte d'impression ou d'illustration et en terminant par la dernière page qui comporte une telle empreinte.

Un des symboles suivants apparaîtra sur la dernière image de chaque microfiche, selon le cas: le symbole \rightarrow signifie "A SUIVRE", le symbole ∇ signifie "FIN".

Les cartes, planches, tableaux, etc., peuvent être filmés à des taux de réduction différents. Lorsque le document est trop grand pour être reproduit en un seul cliché, il est filmé à partir de l'angle supérieur gauche, de gauche à droite, et de haut en bas, en prenant le nombre d'images nécessaire. Les diagrammes suivants illustrent la méthode.

of to
and
1. 1. 1.

Townsend Esq.
.....

Esq.
.....

Y.

M. A.

There will be
at Woolwich, and
SERVICE, and fo
(3.) In the JUNIOR
eit
Gr
SE

The Collegiate
will be afforded to the
ING, and also for the

For Board
Tuition Fees
Lang
Drawi

A reduction
The payments
STRICTLY IN ADVANCE
writing to the Head
Books and



The Collegiate Institute, London, C.W.

Visitor:

THE RIGHT REVEREND THE LORD BISHOP OF HURON.

President:

THE VENERABLE ARCHDEACON HELLMUTH, D.D.,

Principal and Divinity Professor of Huron College.

Head Master:

THE REV. ARTHUR SWEATMAN, M.A.,
Late Scholar of Christ's College, Cambridge, Sec. Opt.

Secretary of Treasurer

Master of Exercises
& H. M. H. Professor

Music Master:

Wm. John Kesteven Esq.

Assistant Masters:

THE REV. PROFESSOR HALPIN, A.M.,
Ex-Scholar and Classical Moderator, T.C.D.

R. HILL, ESQ., B.A.

J. C. MORRIS, ESQ.

H. HURD, ESQ.

J. E. Howard Esq. B. A.
A. Scott Esq. B. A.

Drawing Master:

Wm. Robinson Esq.

Drill Sergeant:

SERGEANT MAJOR GRAY.

Late of the Royal Canadian Rifles.

Gymnastic Master
Wm. Suttley B. A.

The COLLEGIATE INSTITUTE—with accommodation for 150 Boarders--will be ready for the reception of Pupils by the 1st September next (1865).

The OBJECT contemplated is to provide a CLASSICAL, SCIENTIFIC, and COMMERCIAL EDUCATION, for the sons of gentlemen, commensurate with the wants and progress of this rising country.

The DISCIPLINE of the Institute will be based, as nearly as possible, upon the model of the great Public Schools of England and Germany.

The utmost care and attention will be bestowed on the Moral and Religious training of the Pupils, under the direct charge of the REVEREND THE HEAD MASTER. The fact that the Masters will be resident, secures supervision at all times; the PREPARATION of the lessons in the evening will also be under their superintendence.

To ensure every home comfort for the Boarders, a Lady of high character and experience has been secured, to take the management of the Domestic Department.

COURSE OF INSTRUCTION.

LANGUAGES: ANCIENT—Latin, Greek, Hebrew.
MODERN—French, German.

MATHEMATICS: Pure and Mixed.

NATURAL SCIENCE: Physical Science, Chemistry, Natural History, Geology, Mineralogy, Experimental Philosophy, and the Use of Instruments.

ENGLISH & COMMERCIAL: Composition, History, Geography, Book-keeping, Music, Drawing, Gymnastics, Drill.

The above Courses will be divided into Three Departments:—

I.--THE CLASSICAL DEPARTMENT.

II.--THE MODERN AND SCIENTIFIC DEPARTMENT.

III.--THE JUNIOR DEPARTMENT.

- (1.) In the CLASSICAL DEPARTMENT, all those branches of knowledge will be taught which are necessary to prepare Pupils for the Universities and the Learned Professions.
- (2.) In the MODERN and SCIENTIFIC DEPARTMENT, the Course of Study will embrace less Latin and Greek, and more Mathematics, Modern Languages, English Literature, History, Geography (including Physical and Political), Composition and Book-keeping.

There will be a Special Class to prepare Pupils for the Competitive Examinations for admission at Woolwich, and Sandhurst, for direct Commissions in the ARMY and NAVY; for the CIVIL SERVICE, and for Mercantile Pursuits.

- (3.) In the JUNIOR DEPARTMENT, younger boys will go through a course of study, which will equally prepare them for either of the two other Departments. Special attention will be paid to a thorough grounding in the Grammars, and the essentials of an English education. Boys will be admitted to this Department at SEVEN years of age.

The Collegiate Institute being furnished with a complete set of SCIENTIFIC INSTRUMENTS, peculiar facilities will be afforded to the Pupils for acquiring the practical use of them; for ENGINEERING, MINING, TELEGRAPHING, and also for the study of the NATURAL AND EXPERIMENTAL SCIENCES.

BOARD AND TUITION FEES.

For Board and Washing \$140 per annum.

Tuition Fees (for Boarder and Day Pupils equally), including Modern Languages, and all the other Branches (except Music, Drawing, Gymnastics and Drill) \$80 “

A reduction will be made in the case of the sons of Clergymen.

The payments for Board and Tuition, which are apportioned between the three Collegiate Terms, must be made STRICTLY IN ADVANCE. All other School accounts will be sent in, in the usual way. A Term's notice must be given in writing to the Head Master before removing a Pupil.

Books and Stationery supplied in the School at the Regular Prices.

COLLEGIATE TERMS.

The School year is divided into **THREE TERMS**, which commence and terminate as follows:—

1ST TERM:—20th January to the Thursday before Easter.

2ND TERM:—The second Tuesday after Easter to the 30th of June.

3RD TERM:—1st of September to the 22nd of December.

Every Pupil will be required to return without fail on the day appointed for the re-opening of the School after a vacation, as unpunctuality not only sets a bad example but deranges the entire work of the classes. Fines, after the system of the public schools in Europe, will be inflicted on every boy who fails to appear at the appointed time, unless he produces a *bona fide* certificate of ill health, or other unavoidable accident.

PRIZES.

A liberal number of Prizes will be awarded at the Annual Examination before the Midsummer Vacation, in the disposal of which regard will be had to the general conduct, as well as to the work of the various competitors during the preceding year. Special encouragement will be held out for the cultivation of truthfulness and high honor; of manly and generous qualities among the boys in their intercourse, whether IN or OUT of school.

SCHOLARSHIPS for the Universities will be founded as the Collegiate Institute progresses.

THE BUILDINGS, GROUNDS, ETC.

The **COLLEGIATE INSTITUTE** is situated near the City, on a beautiful Site, in the most healthy locality, and stands in **TEN ACRES** of ground.

The **NEW** and **EXTENSIVE BUILDINGS** contain several spacious **CLASS ROOMS**; a large **DINING HALL**; **LIBRARY**; **MUSEUM**; **DORMITORIES**; and **BATHS** supplied with **HOT** and **COLD** water, for the use of the Boarders. The whole **PREMISES** have been planned and arranged with a special view to secure the **CONVENIENCE, COMFORT** and **HEALTH** of the occupants, in accordance with the most modern improvements, as respects **WARMTH** and **VENTILATION**.

A **SANATORIUM** has been arranged, isolated from the rest of the Buildings, where Pupils, in case of sickness, will receive the best medical attendance.

The **GROUNDS** (fenced in) comprise **CRICKET FIELD**, **GYMNASIUM**, **FIVE'S COURT**, **COVERED SHED** for wet weather, etc., and every encouragement will be given to the pursuit of manly and healthy games, under careful superintendence.

REMARKS, ETC.

1. To insure **EARLY ADMISSION** to the Collegiate Institute, it is necessary that timely application be made to the Head Master; as from the number of Scholarships already taken up, it is expected that the vacancies at his disposal will be limited; and a considerable interval may elapse before a pupil, entered on the books, can actually be admitted.

2. The **CLOTHES** brought by each pupil must be according to the regulation list appended.

3. A **REPORT** by the Head Master, of the pupils severally, with regard to proficiency in their studies and their general conduct, will be transmitted to their Parents or Guardians at the end of each term.

4. Parents are requested not to send with their boys, or to allow them to bring, *Novels or works of Fiction*, Independently of the pernicious effects upon a boy's mind produced by such indiscriminate reading, the invariable result is that *School Lessons are neglected*. A **SCHOOL LIBRARY**, to which the pupils are required to subscribe **£2** per annum, will be provided for their use; and it will be furnished with such interesting works as will be suitable and profitable for a boy's reading.

5. Boys will be allowed unrestricted liberty in corresponding with their Parents and Friends. If letters are sent home badly written, or carelessly spelled, the evil might be checked if any glaring examples were forwarded to the Head Master.

6. Parents are earnestly requested not to furnish their sons with a large supply of **POCKET MONEY**, as this practice tends to foster extravagance. Parents would do well to authorize the Head Master to give a fixed sum for pocket money every week, on a scale graduated to a boy's position in the school, with power to increase it in cases of industry and good conduct.

Application for admission, and for all further particulars, to be made to

“THE REV. THE HEAD MASTER,

“COLLEGIATE INSTITUTE,

“London C. W.”

INVENTORY OF CLOTHES TO BE BROUGHT BY EACH PUPIL.

School Number

	<i>No. required by the Rules.</i>	<i>No. sent Additional.</i>	<i>Additions made in the Half-year.</i>	ARTICLES.	<i>No. Returned.</i>
	3			Jackets or Coats.....	
	4			Pairs of Trousers.....	
	3			Waistcoats.....	
	4			Pairs of Boots or Shoes.....	
	1			Pair of Leather Slippers.....	
	6			White Day Shirts (or 4 flannel) ...	
	3			Night ditto.....	
	8			Pairs of Stockings.....	
	12			Pocket Handkerchiefs.....	
	†2			Caps.....	
	12			Loose Shirt Collars.....	
	4			Under Waistcoats.....	
	4			Pairs of Drawers.....	
	3			Neckties or Scarfs.....	
	1			Neck Shawl.....	
	1			Great Coat.....	
				Nail and Tooth Brushes.....	
				Combs.....	
				Brushes.....	
				Sponge.....	

If worn.

In bags.

THE FOLLOWING REGULATIONS SHOULD BE CAREFULLY OBSERVED :

Each Article of Clothing must be marked with the NAME IN FULL and the SCHOOL NUMBER of the Pupil,* without which mark the Clothes cannot be identified.

It is desirable that all articles of clothing be brought to the Collegiate Institute clean, and in a good state of repair, and that a *written* permission be addressed to the Head Master when pupils are to be supplied, either generally or on particular occasions, with the larger articles of cloth or linen clothing.

It is particularly requested that all coats and jackets may be of a *dark colour*. † COLLEGIATE CAPS, of a certain prescribed make and material, are required to be worn, and will be supplied at the Institute.

In lieu of the Bed, Bedding, Towels, and other articles usually brought by pupils to school, the Institute will supply all these *for the whole period of a Pupil's residence*, for an entrance fee of \$12.

* The School Number will be communicated to a boy's Parent or Guardian on his being accepted for admission.

