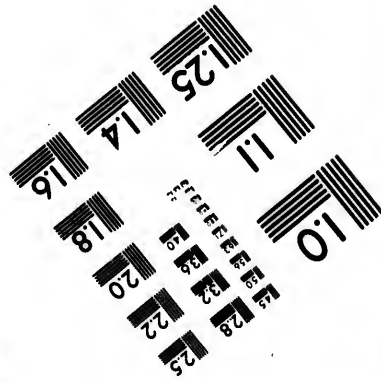
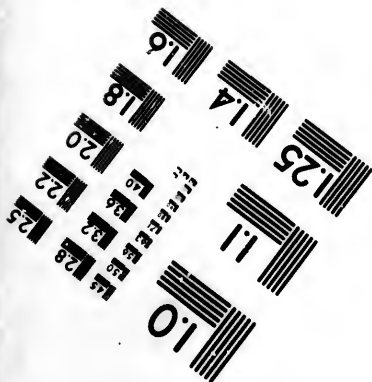
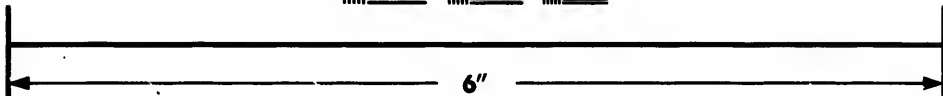
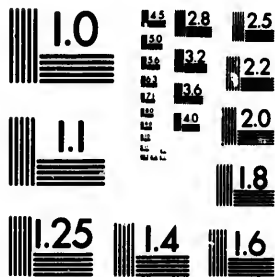


**IMAGE EVALUATION
TEST TARGET (MT-3)**



**Photographic
Sciences
Corporation**

23 WEST MAIN STREET
WEBSTER, N.Y. 14580
(716) 872-4503



**CIHM/ICMH
Microfiche
Series.**

**CIHM/ICMH
Collection de
microfiches.**



Canadian Institute for Historical Microreproductions / Institut canadien de microreproductions historiques



© 1985

Technical and Bibliographic Notes/Notes techniques et bibliographiques

The Institute has attempted to obtain the best original copy available for filming. Features of this copy which may be bibliographically unique, which may alter any of the images in the reproduction, or which may significantly change the usual method of filming, are checked below.

L'Institut a microfilmé le meilleur exemplaire qu'il lui a été possible de se procurer. Les détails de cet exemplaire qui sont peut-être uniques du point de vue bibliographique, qui peuvent modifier une image reproduite, ou qui peuvent exiger une modification dans la méthode normale de filmage sont indiqués ci-dessous.

- Coloured covers/
Couverture de couleur
- Covers damaged/
Couverture endommagée
- Covers restored and/or laminated/
Couverture restaurée et/ou pelliculée
- Cover title missing/
Le titre de couverture manque
- Coloured maps/
Cartes géographiques en couleur
- Coloured ink (i.e. other than blue or black)/
Encre de couleur (i.e. autre que bleue ou noire)
- Coloured plates and/or illustrations/
Planches et/ou illustrations en couleur
- Bound with other material/
Relié avec d'autres documents
- Tight binding may cause shadows or distortion
along interior margin/
La reliure serrée peut causer de l'ombre ou de la
distorsion le long de la marge intérieure
- Blank leaves added during restoration may
appear within the text. Whenever possible, these
have been omitted from filming/
Il se peut que certaines pages blanches ajoutées
lors d'une restauration apparaissent dans le texte,
mais, lorsque cela était possible, ces pages n'ont
pas été filmées.
- Additional comments:/
Commentaires supplémentaires:

- Coloured pages/
Pages de couleur
- Pages damaged/
Pages endommagées
- Pages restored and/or laminated/
Pages restaurées et/ou pelliculées
- Pages discoloured, stained or foxed/
Pages décolorées, tachetées ou piquées
- Pages detached/
Pages détachées
- Showthrough/
Transparence
- Quality of print varies/
Qualité inégale de l'impression
- Includes supplementary material/
Comprend du matériel supplémentaire
- Only edition available/
Seule édition disponible
- Pages wholly or partially obscured by errata
slips, tissues, etc., have been refilmed to
ensure the best possible image/
Les pages totalement ou partiellement
obscurcies par un feuillet d'errata, une pelure,
etc., ont été filmées à nouveau de façon à
obtenir la meilleure image possible.

This item is filmed at the reduction ratio checked below/
Ce document est filmé au taux de réduction indiqué ci-dessous.

10X	14X	18X	22X	26X	30X
<input type="checkbox"/>	<input type="checkbox"/>	<input type="checkbox"/>	<input checked="" type="checkbox"/>	<input type="checkbox"/>	<input type="checkbox"/>
12X	16X	20X	24X	28X	32X

The copy filmed here has been reproduced thanks to the generosity of:

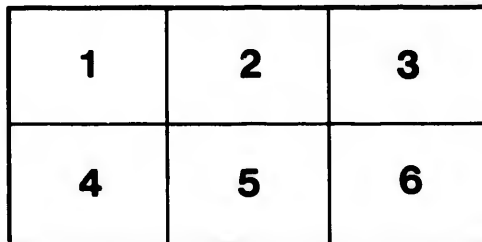
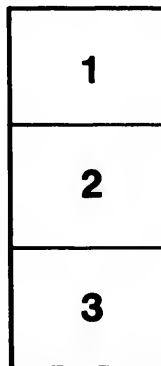
Douglas Library
Queen's University

The images appearing here are the best quality possible considering the condition and legibility of the original copy and in keeping with the filming contract specifications.

Original copies in printed paper covers are filmed beginning with the front cover and ending on the last page with a printed or illustrated impression, or the back cover when appropriate. All other original copies are filmed beginning on the first page with a printed or illustrated impression, and ending on the last page with a printed or illustrated impression.

The last recorded frame on each microfiche shall contain the symbol \rightarrow (meaning "CONTINUED"), or the symbol ∇ (meaning "END"), whichever applies.

Maps, plates, charts, etc., may be filmed at different reduction ratios. Those too large to be entirely included in one exposure are filmed beginning in the upper left hand corner, left to right and top to bottom, as many frames as required. The following diagrams illustrate the method:



L'exemplaire filmé fut reproduit grâce à la générosité de:

Douglas Library
Queen's University

Les images suivantes ont été reproduites avec le plus grand soin, compte tenu de la condition et de la netteté de l'exemplaire filmé, et en conformité avec les conditions du contrat de filmage.

Les exemplaires originaux dont la couverture en papier est imprimée sont filmés en commençant par le premier plat et en terminant soit par la dernière page qui comporte une empreinte d'impression ou d'illustration, soit par le second plat, selon le cas. Tous les autres exemplaires originaux sont filmés en commençant par la première page qui comporte une empreinte d'impression ou d'illustration et en terminant par la dernière page qui comporte une telle empreinte.

Un des symboles suivants apparaîtra sur la dernière image de chaque microfiche, selon le cas: le symbole \rightarrow signifie "A SUIVRE", le symbole ∇ signifie "FIN".

Les cartes, planches, tableaux, etc., peuvent être filmés à des taux de réduction différents. Lorsque le document est trop grand pour être reproduit en un seul cliché, il est filmé à partir de l'angle supérieur gauche, de gauche à droite, et de haut en bas, en prenant le nombre d'images nécessaire. Les diagrammes suivants illustrent la méthode.

DIRECTIONS FOR USING

EASTMAN'S SOLIO.

SEPARATE TONING BATH.

WASH in 5 or 6 changes of water or sufficient to remove the free silver.

TONF in a plain gold bath, using about 1 gr. of gold to 48 oz. of water. Neutralize by adding a saturated solution of borax, bi-carbonate of soda or sal soda.

When toned, immerse prints in running water where they may remain until all are ready for the fixing.

If running water cannot be had put prints into

SHORT STOP: Salt, 1 oz.
Water, 1 gal.

If there is a large batch of prints to be toned do not allow prints to lie in short stop solution, but put them into a tray containing clear water where they may remain until all are ready for the fixing.

Fix twenty minutes in

Water, 1 gal.
Hypo, 13 oz.
Solio Hardener, ¼ oz.

TO MIX WITH HYDROMETER, take water 1 gal., add sufficient Hypo to test 25 gr. to the oz., and add ¼ oz. of SOLIO hardener Solution.

WASH 1 hour in running cold water or in 16 changes of cold water, keeping prints separated so the water may have a chance to eliminate the chemicals.

DETAILS.

The toning bath should tone in 6 or 7 minutes.

Tone by transit light for the high lights and half tones only, paying no attention whatever to shadows.

We recommend a neutral bath and advise the use of Squibb's red litmus to test with.

Solios hardener in the fixing acts as a clearing agent.

One gallon of fixing bath is sufficient for 1 gross cabinet size SOLIO or its equivalent.

HOW TO MAKE SOLIO HARDENER.

Chloride of Aluminum, 3 oz.
Bi-Sulphite of Soda, 2¼ oz.
Cold Water, 12 oz.

Put both chemicals in the water and shake until dissolved.

SOLIO HARDENER POWDERS. It is important that properly tested chemicals should be used in mixing the SOLIO Hardener, as otherwise the desired results may not be secured. We therefore put up in convenient powder form the amount of chemicals required to make 16 ounces of the SOLIO Hardener at 25 cents each.

LP
F5012
19-?
C212

COMBINED TONING BATH.

June 73

PRINT SAME AS ALBUMEN.

Stock Solution :	A	Hyposulphite of Soda,	8 oz.
		Alum (Crystals),	6 oz.
		Sugar (granulated),	2 oz.
		Water,	80 oz.

Dissolve above in COLD WATER, and
When dissolved add Borax 2 oz.
Dissolved in hot water, 8 oz.

Let stand over night and decant clear liquid.

Stock Solution :	B	Pure Chloride of Gold,	7½ grains*
		Acetate of Lead (Sugar of Lead)	64 grains
		Water	8 oz.

Solution B should be shaken before using and not filtered.

TO TONE 15 CABINETS, TAKE

Stock Solution A,		8 oz.
Stock Solution B,		1 oz.

Place prints without previous washing into the above.

Tone to desired color and immerse prints for 5 minutes in following Salt Solution to stop the toning:

Salt,		1 oz.
Water,		32 oz.

After the salt bath give one change of cold water and fix for 10 minutes in the

EXTRA FIXING BATH:		Hyposulphite of Soda,	1 oz.
		Sulphite of Soda (Crystals),	60 grains
		Borax,	¼ oz.
		Water,	20 oz.

WASH 1 hour in running cold water or in 16 changes of cold water, when prints may be mounted same as albumen prints.

DETAILS.

THE EXTRA FIXING BATH should be used to ensure *thorough fixing*.
THE COMBINED BATH MUST BE USED COLD, not above 50° Fahr.
This condition can be obtained by placing a piece of ice in the bath when toning. If the bath is too warm it will give yellow prints with a greenish cast in the half tones.

- ☞ USE A THERMOMETER and keep it in the toning bath all the time.
- THE COMBINED BATH IS AN ACID SOLUTION. The borax neutralizes only the *excess* of acid in the alum. Any attempt to neutralize the bath will precipitate the alum.
- The combined bath should not be used a second time.
- CLEAN ALL TRAYS once a week with nitric or sulphuric acids and water to prevent white spots or blotches on the prints.
- ☞ Prints allowed to stand over night in water are liable to turn yellow, they should be mounted as soon as washed.

*Or double the quantity of chloride of gold and sodium.

J. Meppin

Sc/100

June 13

GLACE FINISH. MOUNTING. SPOTTING.

GLACE FINISH. Clean the ferrotype plate with warm water each time it is used. Polish with a soft cloth until plate is absolutely free from dirt or specks of any description. Swab with a tuft of soft cloth or cotton batting wet with a solution composed of benzine 1 oz., paraffine 10 gr. Rub dry with a clean cloth and polish with a chamois skin or very soft cloth. Use a soft brush to remove particles of dust. Then squeegee the wet print onto the plate and rub down with a dry blotter. The print must be in perfect contact to produce a uniform and even surface. This can be obtained by placing a piece of cotton or rubber cloth over the print and using a small print roller to rub down.

J. Meppin

MOUNTING. The prints may be mounted with starch paste in the ordinary manner; use dry Castile soap for lubricator, or, if it is desired to mount them with *glace surface*, the back of the print when nearly dry should be brushed over with a very thin solution of pure white glue, after being well filtered. Use a camel's hair brush. When thoroughly dry the print should be stripped from the ferrotype plate. To mount, moisten card with a wet sponge. Place print in proper position and rub down.

SPOTTING. The solution given below will prevent the spotting ink from rubbing off in the burnisher, and will give a gloss equal to balance of print.

Solution A, Alcohol, 1 oz. Thymol, 4 gr.
Solution B, Water, 1 oz.; Gelatine, 15 gr.; A, solution, 1 dr.

Heat Solution B to not over 120° Fahr. until thoroughly dissolved.

For use mix, with the spotting brush, Solution B with the color and if too thick the brush may be dampened with water or saliva.

sc/rr

1204958

PRICE LIST

Size.	¼ Doz.	Doz.	½ Gross.	Gross
2½ x 2½		2 doz. \$0.20	\$0.60	\$1.00
2½ x 3¼		2 doz. .20	.60	1.00
2½ x 3½		2 doz. .20	.60	1.00
2½ x 3¾, Carte de V.		2 doz. .20	.60	1.00
3½ x 3½		2 doz. .20	.60	1.15
3 x 4, Mantello,		2 doz. .20	.60	1.00
3½ x 4,		2 doz. .20	.60	1.15
4 x 4,		2 doz. .25	.70	1.25
3¾ x 4¼,		2 doz. .20	.60	1.15
3¾ x 5½,		2 doz. .25	.70	1.25
4¼ x 4¼,		2 doz. .25	.70	1.25
3¾ x 5½, Cabinet,		.20	.80	1.50
3¾ x 5¾,		.20	.90	1.60
4 x 5,	1 doz. .15	2 doz. .25	.70	1.25
4¼ x 5½,		.20	.90	1.60
4 x 6,		.20	.90	1.60
4¼ x 6½,		.25	1.25	2.10
4¾ x 6½,		.25	1.40	2.40
5 x 7,		.30	1.60	2.65
5 x 7½,		.30	1.70	2.90
5 x 8,		.30	1.75	3.00
5½ x 7¾, Paris Panel,		.35	1.90	3.25
6 x 8,		.40	2.25	4.00
6½ x 8½,		.45	2.40	4.25
7 x 9,		.50	2.75	5.00
7½ x 9½,		.55	3.25	6.00
8 x 10,		.60	3.50	6.50
10 x 12,		.90	5.25	10.00
11 x 14,	\$0.65	1.20	7.00	13.00
12 x 15,	.75	1.35	8.25	15.30
14 x 17,	.95	1.80	10.50	20.00
16 x 20,	1.25	2.40	14.00	27.00
17 x 20,	1.35	2.60	15.00	29.00
18 x 22,	1.60	3.00	17.50	34.00
20 x 24,	1.85	3.50	20.50	40.00

Cabinet Seconds, - \$1.20 per gross
 4 x 5 " (trimmed), 1.10 " "

ROLLS.

10 foot Roll, 20 inches wide \$1.40	5 yard Roll, 40 inches wide \$4.00
10 " " 40 " " 2.75	10 " " 20 " " 3.75
5 yard " 20 " " 2.15	10 " " 40 " " 7.50

Roll paper is not furnished in smaller sizes or lengths than shown above.

Special sizes furnished at proportionate prices on orders amounting to \$1.00 list or more.

*STANDARD CABINET SIZE.—This size will be furnished on all orders for "Cabinets" when no special size is mentioned.

SOLIO SUPPLIES.

Concentrated toning and fixing solution.

8 oz. Bottle of Solution, \$0.50 | ½ Gal. Bottle of Solution, \$2.00

Solio Hardener.

8 oz. Bottle of Solution, \$0.35 | ½ Gal. Bottle of Solution, \$1.75
 Powder to make 16 oz. of Solution,40

CANADIAN KODAK CO., LIMITED

TORONTO, CAN.

