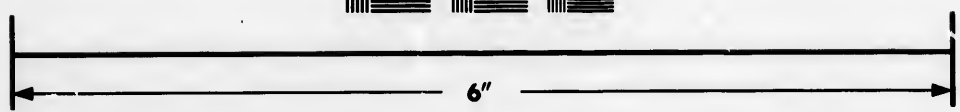
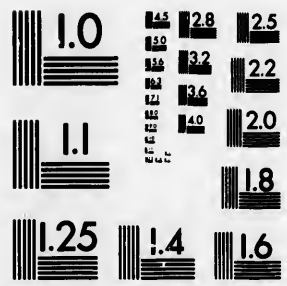


**IMAGE EVALUATION
TEST TARGET (MT-3)**



**Photographic
Sciences
Corporation**

23 WEST MAIN STREET
WEBSTER, N.Y. 14580
(716) 872-4503

1.5 1.8
2.0 2.2
2.5 2.8
3.2 3.6
4.0 4.5

**CIHM/ICMH
Microfiche
Series.**

**CIHM/ICMH
Collection de
microfiches.**



Canadian Institute for Historical Microreproductions / Institut canadien de microreproductions historiques

1.0
1.5
2.0
2.5
3.0
3.5
4.0
4.5

© 1984

Technical and Bibliographic Notes/Notes techniques et bibliographiques

The Institute has attempted to obtain the best original copy available for filming. Features of this copy which may be bibliographically unique, which may alter any of the images in the reproduction, or which may significantly change the usual method of filming, are checked below.

L'Institut a microfilmé le meilleur exemplaire qu'il lui a été possible de se procurer. Les détails de cet exemplaire qui sont peut-être uniques du point de vue bibliographique, qui peuvent modifier une image reproduite, ou qui peuvent exiger une modification dans la méthode normale de filmage sont indiqués ci-dessous.

- | | |
|--|--|
| <input type="checkbox"/> Coloured covers/
Couverture de couleur | <input type="checkbox"/> Coloured pages/
Pages de couleur |
| <input type="checkbox"/> Covers damaged/
Couverture endommagée | <input type="checkbox"/> Pages damaged/
Pages endommagées |
| <input type="checkbox"/> Covers restored and/or laminated/
Couverture restaurée et/ou pelliculée | <input type="checkbox"/> Pages restored and/or laminated/
Pages restaurées et/ou pelliculées |
| <input checked="" type="checkbox"/> Cover title missing/
Le titre de couverture manque | <input type="checkbox"/> Pages discoloured, stained or foxed/
Pages décolorées, tachetées ou piquées |
| <input type="checkbox"/> Coloured maps/
Cartes géographiques en couleur | <input type="checkbox"/> Pages detached/
Pages détachées |
| <input type="checkbox"/> Coloured ink (i.e. other than blue or black)/
Encre de couleur (i.e. autre que bleue ou noire) | <input checked="" type="checkbox"/> Showthrough/
Transparence |
| <input type="checkbox"/> Coloured plates and/or illustrations/
Planches et/ou illustrations en couleur | <input checked="" type="checkbox"/> Quality of print varies/
Qualité inégale de l'impression |
| <input checked="" type="checkbox"/> Bound with other material/
Relié avec d'autres documents | <input type="checkbox"/> Includes supplementary material/
Comprend du matériel supplémentaire |
| <input type="checkbox"/> Tight binding may cause shadows or distortion
along interior margin/
La reliure serrée peut causer de l'ombre ou de la
distortion le long de la marge intérieure | <input type="checkbox"/> Only edition available/
Seule édition disponible |
| <input type="checkbox"/> Blank leaves added during restoration may
appear within the text. Whenever possible, these
have been omitted from filming/
Il se peut que certaines pages blanches ajoutées
lors d'une restauration apparaissent dans le texte,
mais, lorsque cela était possible, ces pages n'ont
pas été filmées. | <input type="checkbox"/> Pages wholly or partially obscured by errata
slips, tissues, etc., have been refilmed to
ensure the best possible image/
Les pages totalement ou partiellement
obscurcies par un feuillet d'errata, une pelure,
etc., ont été filmées à nouveau de façon à
obtenir la meilleure image possible. |
| <input type="checkbox"/> Additional comments:
Commentaires supplémentaires: | |

This item is filmed at the reduction ratio checked below/
Ce document est filmé au taux de réduction indiqué ci-dessous.

10X	14X	18X	22X	26X	30X
<input type="checkbox"/>	<input type="checkbox"/>	<input type="checkbox"/>	<input checked="" type="checkbox"/>	<input type="checkbox"/>	<input type="checkbox"/>
12X	16X	20X	24X	28X	32X

The copy filmed here has been reproduced thanks to the generosity of:

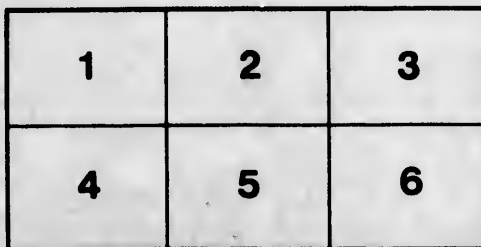
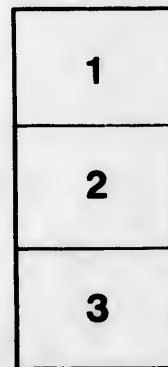
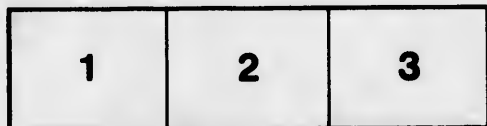
Thomas Fisher Rare Book Library,
University of Toronto Library

The images appearing here are the best quality possible considering the condition and legibility of the original copy and in keeping with the filming contract specifications.

Original copies in printed paper covers are filmed beginning with the front cover and ending on the last page with a printed or illustrated impression, or the back cover when appropriate. All other original copies are filmed beginning on the first page with a printed or illustrated impression, and ending on the last page with a printed or illustrated impression.

The last recorded frame on each microfiche shall contain the symbol \rightarrow (meaning "CONTINUED"), or the symbol ∇ (meaning "END"), whichever applies.

Maps, plates, charts, etc., may be filmed at different reduction ratios. Those too large to be entirely included in one exposure are filmed beginning in the upper left hand corner, left to right and top to bottom, as many frames as required. The following diagrams illustrate the method:



L'exemplaire filmé fut reproduit grâce à la générosité de:

Thomas Fisher Rare Book Library,
University of Toronto Library

Les images suivantes ont été reproduites avec le plus grand soin, compte tenu de la condition et de la netteté de l'exemplaire filmé, et en conformité avec les conditions du contrat de filmage.

Les exemplaires originaux dont la couverture en papier est imprimée sont filmés en commençant par le premier plat et en terminant soit par la dernière page qui comporte une empreinte d'impression ou d'illustration, soit par le second plat, selon le cas. Tous les autres exemplaires originaux sont filmés en commençant par la première page qui comporte une empreinte d'impression ou d'illustration et en terminant par la dernière page qui comporte une telle empreinte.

Un des symboles suivants apparaîtra sur la dernière image de chaque microfiche, selon le cas: le symbole \rightarrow signifie "A SUIVRE", le symbole ∇ signifie "FIN".

Les cartes, planches, tableaux, etc., peuvent être filmés à des taux de réduction différents. Lorsque le document est trop grand pour être reproduit en un seul cliché, il est filmé à partir de l'angle supérieur gauche, de gauche à droite, et de haut en bas, en prenant le nombre d'images nécessaire. Les diagrammes suivants illustrent la méthode.

rrata
to

pelure,
n à



W. H. W. Munnely

THE NORTH BRITISH

"

Canadian Investment Company, Limited.

REPORT

BY

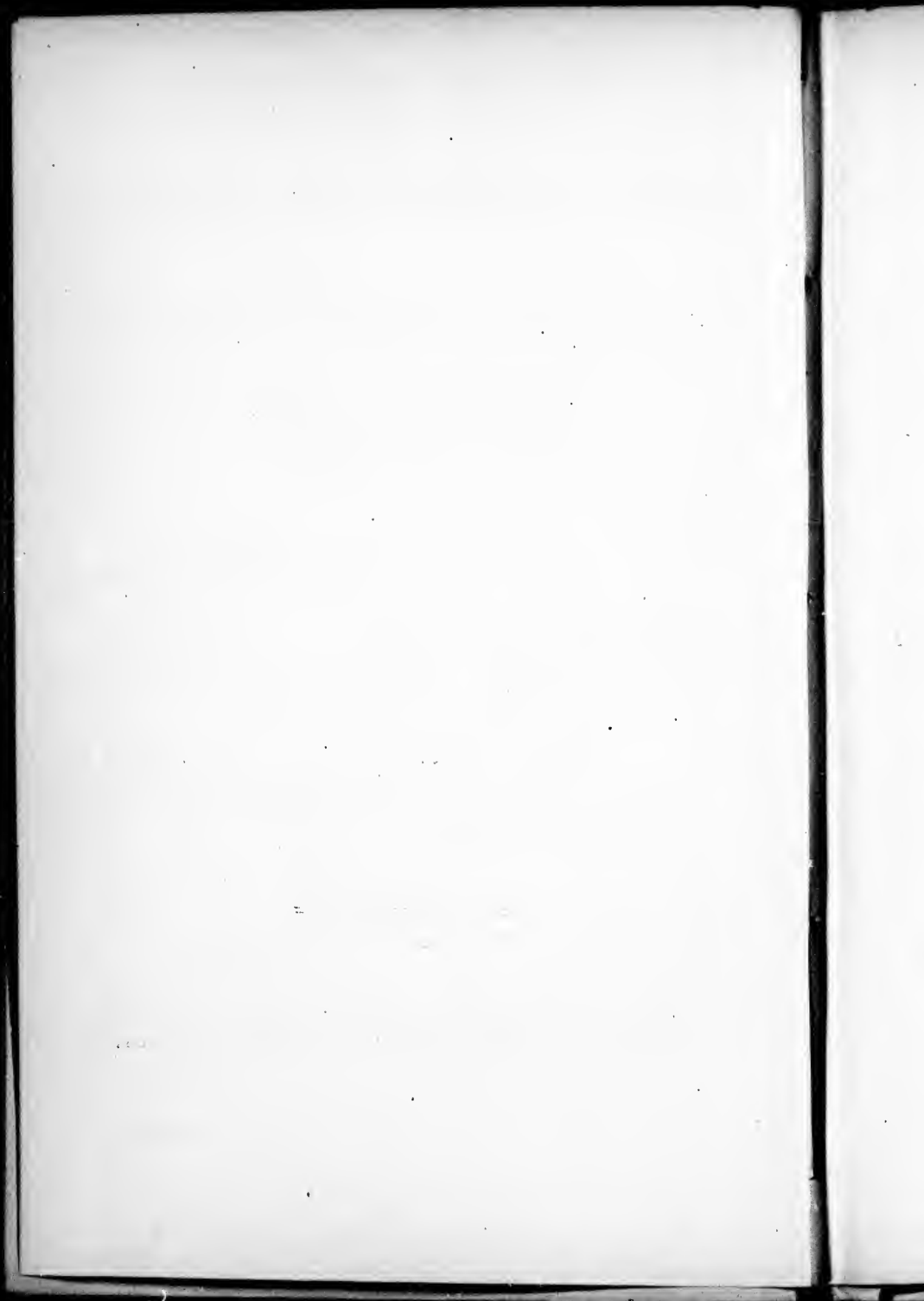
MR. GUNN AND MR. WILSON

OF THEIR VISIT TO CANADA,

29TH AUGUST—7TH NOVEMBER, 1878.

GLASGOW:

PRINTED BY JAMES MACNAB, 106 WEST NILE ST.



GLASGOW, 18th November, 1878.

To the DIRECTORS of

**THE NORTH BRITISH CANADIAN INVESTMENT
COMPANY (Limited).**

GENTLEMEN,

In accordance with the resolution arrived at by you on 2nd July last—that we should, during the autumn of the present year, visit Canada, with the view of reporting on the general state of the Company's business there, as that should appear from personal investigation—we left Glasgow on 29th August, and arrived at Toronto on 10th September.

On our arrival we met with our Advising Board and General Managers, to whom an extract of your minute of 27th August, containing a definition of the objects of our visit, had been sent. These gentlemen expressed themselves as much pleased that you had seen fit to send a Deputation, and placed themselves and the Books, and every information they possessed, very fully and frankly at our disposal. During our visit we had frequent opportunities of meeting the Members of the Board and General Managers, and we feel bound to bear witness to the care and attention which they bestowed upon the Company's business. We attended several Board Meetings when applications for Loans came before them in ordinary course, and were particularly struck with the scrutinizing way in which every application for a Loan was examined, the advantages and disadvantages of the district

from which it came discussed, and the character of the Agent and Applicant considered. In the present Members of our Advising Board we have a happy combination of prudence and zeal, and we feel certain that the gentlemen who represent us have but one aim—viz., to make the Company in all respects, if possible, the first of its kind in the Dominion—aiming rather, in order to secure that end, at a sound and secure business, than at a merely extensive one.

We shall now deal separately with the various points to which our attention was by your instructions specially directed.

I.—MANAGEMENT OF OFFICE, BOOKS, &c.

Our first week in Toronto was spent in the Company's Office, and during that time we made a thorough investigation into the system on which the Books are kept, and had ample opportunity of noticing how the office is managed. The result of our examination was that we have no fault to find and no improvements to suggest.

We found that, while suitable enough for the beginning, the Company's Offices were not in all respects suitable for the business according to its present dimensions. After several conferences with our Advising Board, we expressed to them our opinion that they should look out for other and better Offices. This they are to do.

II.—PROPERTIES MORTGAGED TO THE COMPANY.

We spent fully three weeks travelling through the Province of Ontario, where, with comparatively few exceptions, the Company's funds are all invested, inspecting Property held by the Company on mortgage. During that period we travelled a distance of 2500 miles, and saw 421 Securities, held by the Company,

with a total value of 1,563,000 Dollars, equal to £321,000, on which the sums advanced amounted in whole to 810,000 Dollars, or £166,000. At the time of our visit our total securities numbered about 850, and the sums invested amounted to fully £280,000.

When preparing for the inspection we made a selection of securities in nearly every district, taking those Loans which appeared to have the smallest margin, and the result of our investigation has been entirely satisfactory.

Along with this Report we shall lay before you Books which the General Managers in Toronto prepared for us, in which you will find particulars of the securities we examined, and our special remarks thereon. We should add, perhaps, that with only one or two exceptions, we saw all the securities purchased from the City of Toronto Building Society, and that in the City of Toronto we saw every security held by the Company, whether purchased from that Society or taken by this Company in security of loans made by ourselves.

III.—PAYMENTS OF INTEREST, &c.

In Canada, as in all new countries, borrowers on security of real estate, and especially such of them as are in country districts, are not so punctual with their payments of interest as lenders at home are accustomed to. This arises from various causes, which our Advising Board, being on the spot, can understand, and such want of punctuality is not regarded as at all a sign that a security is bad. The question of arrears received our careful attention, and after conferring fully with our Advising Board we are satisfied that the amount of payments in arrear due to the Company is under the average amount which according to the experience of the older Companies, might be expected to be met with in a business of the extent of our Company's. The Advising Board

and General Managers are dealing with all cases of arrears in the best manner for the Company's interest, and we are of opinion that the matter may be left with every confidence in their hands. We are assured by the Advising Board, and by our own observation, that the chance of any loss on any of the Loans on which we have arrears is very remote. Arrears will continue to be reported to you as hitherto.

IV.—GENERAL MANAGERS' SALARY AND OFFICE EXPENSES.

These matters formed the subject of a special conference with the Advising Board, and the recommendations of that Board, which we feel constrained to endorse, are contained in a copy of their minute of 18th October, which we present to you herewith.

In conclusion, we may say that we think our visit to Canada at this time singularly fortunate. With a commercial crisis at home, so many classes of securities depressed, and confidence in commercial and monetary circles so much weakened, it is a matter for congratulation that we are able to say to you, as we do without hesitation, that the business of this Company is conducted on safe and sound principles, that its Investments in Canada have been and are being made carefully and judiciously, and that our Debentures offer to the public an Investment which yields more than the average return with perfect security.

We are, GENTLEMEN,

Your obedient Servants,

SAMUEL GUNN, *Director.*

ARCH. C. WILSON, *Secretary.*

he
on
ls.
va-
we
ed

th
rd,
of
ch.

at
ie,
m-
or
ut
on
ve
ur
re

